

Auction catalog

Title	Online Auction - March 19, 2019 10AM Central
Description	The following line of Fertilizer, Farm Implement, Truck, Trailer & Construction Equipment will be sold online with the bidding ending on March 19, 2019. Location of the equipment is given. Bidding within the last minute before the closing of a lot will extend the bidding time by an additional minute. Be prepared to bid accordingly. For more information, contact Del Peterson & Associates: 419 West Judy Drive Fremont NE, 68025 Phone: 800-492-9090 or 402-721-4388 Fax: 402-721-4583 E-mail: auction@delpeterson.com
Date	Tue, Mar 19, 2019
Starts at	10:00 AM
Address	PO Box 654, Fremont, NE 68026 USA
Categories	

#1 - Receiver Hitches (PZ1339)

Receiver Hitches (PZ1339), 3 - receiver hitches for Ford pickup. Notes: Item Location: Belleville, IL 62222 Equipment Sold "AS IS, WHERE IS": All equipment/property is sold "AS IS, WHERE IS" with no warranty or guarantees, expressed or implied, No operational assessments have been made by DPA Auctions on this item, it has been photographed ONLY



#2 - Floater Rims (PZ1337)

Floater Rims (PZ1337), Narrow incrop rims for floater. Notes: Item Location: Belleville, IL 62222 Equipment Sold "AS IS, WHERE IS": All equipment/property is sold "AS IS, WHERE IS" with no warranty or guarantees, expressed or implied, No operational assessments have been made by DPA Auctions on this item, it has been photographed ONLY



#3 - Hydraulic Cylinders (PZ1340)

Hydraulic Cylinders (PZ1340), 2 - Pallets of hydraulic cylinders. Notes: Item Location: Belleville, IL 62222 Equipment Sold "AS IS, WHERE IS": All equipment/property is sold "AS IS, WHERE IS" with no warranty or guarantees, expressed or implied, No operational assessments have been made by DPA Auctions on this item, it has been photographed ONLY



#4 - Pallet of Rims (CP1013)

Pallet of Rims (CP1013), Pallet of 16" rims. Notes: Item Location: Columbia, IA 50057 Equipment Sold "AS IS, WHERE IS": All equipment/property is sold "AS IS, WHERE IS" with no warranty or guarantees, expressed or implied, No operational assessments have been made by DPA Auctions on this item, it has been photographed ONLY



#5 - John Deere Fenders (CP1012)

John Deere Fenders (CP1012), 4 - John Deere fenders, came off a JD 4930 sprayer. Notes: Item Location: Columbia, IA 50057 Equipment Sold "AS IS, WHERE IS": All equipment/property is sold "AS IS, WHERE IS" with no warranty or guarantees, expressed or implied, No operational assessments have been made by DPA Auctions on this item, it has been photographed ONLY



#6 - Miscellaneous Cylinders (PD1255)

Miscellaneous Cylinders (PD1255), miscellaneous hydraulic cylinders. Notes: Item Location: Ridott, IL 61067 Equipment Sold "AS IS, WHERE IS": All equipment/property is sold "AS IS, WHERE IS" with no warranty or guarantees, expressed or implied, No operational assessments have been made by DPA Auctions on this item, it has been photographed ONLY



#7 - Falcon Parts (PD1249)

Falcon Parts (PD1249), includes falcon controller, miscellaneous wiring, nodes, and keyboard, items removed to upgrade equipment. Notes: Item Location: Ridott, IL 61067 Equipment Sold "AS IS, WHERE IS": All equipment/property is sold "AS IS, WHERE IS" with no warranty or guarantees, expressed or implied, No operational assessments have been made by DPA Auctions on this item, it has been photographed ONLY



#8 - Pickup Truck Hitches (PD1257)

Pickup Truck Hitches (PD1257), 4 hitches removed from 2015 and newer Chevy and GMC 2500 pickup trucks. Notes: Item Location: Ridott, IL 61067 Equipment Sold "AS IS, WHERE IS": All equipment/property is sold "AS IS, WHERE IS" with no warranty or guarantees, expressed or implied, No operational assessments have been made by DPA Auctions on this item, it has been photographed ONLY



#9 - Miscellaneous Wiring (PD1256)

Miscellaneous Wiring (PD1256), miscellaneous Raven and Agco wiring harnesses. Notes: Item Location: Ridott, IL 61067 Equipment Sold "AS IS, WHERE IS": All equipment/property is sold "AS IS, WHERE IS" with no warranty or guarantees, expressed or implied, No operational assessments have been made by DPA Auctions on this item, it has been photographed ONLY



#10 - FunctionN (CP1000)

FunctionN (CP1000), FunctionN, 180 total gallons (72 containers x 2.5 gallons per container). Notes: , 2019 with NO exceptions. Dismantle, removal and transportation is at the expense, risk and liability of the buyer. Item Location: Lacona, IA 50139 Equipment Sold "AS IS, WHERE IS": All equipment/property is sold "AS IS, WHERE IS" with no warranty or guarantees, expressed or implied, No operational assessments have been made by DPA Auctions on this item, it has been photographed ONLY



#11 - Grain Leg (CP1003)

Grain Leg (CP1003), Approx. 120' grain leg, distributor. Notes: Item Location: Lacona, IA 50139 Equipment Sold "AS IS, WHERE IS": All equipment/property is sold "AS IS, WHERE IS" with no warranty or guarantees, expressed or implied, No operational assessments have been made by DPA Auctions on this item, it has been photographed ONLY



#12 - Bulk Bin (CP1006)

Bulk Bin (CP1006), Approx. 6 ton steel cone bottom bulk bin, ladder. Notes: Item Location: Lacona, IA 50139 Equipment Sold "AS IS, WHERE IS": All equipment/property is sold "AS IS, WHERE IS" with no warranty or guarantees, expressed or implied, No operational assessments have been made by DPA Auctions on this item, it has been photographed ONLY



#13 - Cat T40B Fork Lift (NJP1134, Unit 208)

Cat T40B Fork Lift (NJP1134, Unit 208), LP gas engine, shuttle shift transmission, canopy, hard tire, shows 4404 hours. Notes: No LP tank, Non runner. Item Location: Chariton, IA 50049 Equipment Sold "AS IS, WHERE IS": All equipment/property is sold "AS IS, WHERE IS" with no warranty or guarantees, expressed or implied, No operational assessments have been made by DPA Auctions on this item, it has been photographed ONLY



#14 - Hyster Fork Lift (NJP1135)

Hyster Fork Lift (NJP1135), LP gas engine, shuttle shift transmission, canopy, hard tire, shows 3510 hours. Notes: Non runner. Item Location: Chariton, IA 50049 Equipment Sold "AS IS, WHERE IS": All equipment/property is sold "AS IS, WHERE IS" with no warranty or guarantees, expressed or implied, No operational assessments have been made by DPA Auctions on this item, it has been photographed ONLY



#15 - 1995 Trailking Trailer (PZ1354)

1995 Trailking Trailer (PZ1354), 1999 Trailking model TK24 trailer, 24' long, steel & wood deck, D-rings, 2 spring assisted flip over ramps, tandem axle, dual wheels, 9.50-16.5LT tires, oil bath wheel bearing, electric brakes, 12,000 lb jack, pintle hitch. Notes: Item Location: Tonica, IL 61370 Equipment Sold "AS IS, WHERE IS": All equipment/property is sold "AS IS, WHERE IS" with no warranty or guarantees, expressed or implied, No operational assessments have been made by DPA Auctions on this item, it has been photographed ONLY



#16 - 2010 USC MX2500 Treater (DR1398)

2010 USC MX2500 Treater (DR1398), drum treater, seed wheel, stainless steel inoculation tank is included, digital control panel, electric meter drives, power is disconnected. Notes: This is an exceptionally clean unit. Item Location: Hadley, MN 56151 Equipment Sold "AS IS, WHERE IS": All equipment/property is sold "AS IS, WHERE IS" with no warranty or guarantees, expressed or implied, No operational assessments have been made by DPA Auctions on this item, it has been photographed ONLY



#17 - 2007 International 4300 (DR1037 Unit 2650)

2007 International 4300 (DR1037 Unit 2650), DT466 diesel engine, 6 speed transmission, single axle w/air lift tag axle, air brakes, 2008 5 compartment 2700 gallon fuel body, dual metered hose reels, frame mounted storage box, AM/FM radio, cab heat/air conditioning, cruise control, 22.5 tires, shows 259,662 miles. Notes: Windshield has a crack from cold weather. Miles may be a little more as truck was still in use at time of pictures. Item Location: Spring Green, WI 53588 Equipment Sold "AS IS, WHERE IS": All equipment/property is sold "AS IS, WHERE IS" with no warranty or guarantees, expressed or implied, No operational assessments have been made by DPA Auctions on this item, it has been photographed ONLY



#18 - 2008 Dodge 4500HD (TR7611)

2008 Dodge 4500HD (TR7611), 6.7 liter Cummins turbodiesel, aM/FM Radio, Heat/AC, 179,000 miles, fuel tank with 20 gpm pump, storage boxes and flat bed. Lot of repairs done, all new tires. Notes: Item Location: Elizabeth, IL 61028 Equipment Sold "AS IS, WHERE IS": All equipment/property is sold "AS IS, WHERE IS" with no warranty or guarantees, expressed or implied, No operational assessments have been made by DPA Auctions on this item, it has been photographed ONLY



#19 - John Deere Hay Stacker (PZ1361)

John Deere Hay Stacker (PZ1361), John Deere 200 hay stacker, tandem axle, flotation tires. Notes: Item Location: Gordon, NE 69343 Equipment Sold "AS IS, WHERE IS": All equipment/property is sold "AS IS, WHERE IS" with no warranty or guarantees, expressed or implied, No operational assessments have been made by DPA Auctions on this item, it has been photographed ONLY



#20 - John Deere Hay Stacker (PZ1363)

John Deere Hay Stacker (PZ1363), John Deere 200 hay stacker, single axle, flotation tires. Notes: Item Location: Gordon, NE 69343 Equipment Sold "AS IS, WHERE IS": All equipment/property is sold "AS IS, WHERE IS" with no warranty or guarantees, expressed or implied, No operational assessments have been made by DPA Auctions on this item, it has been photographed ONLY



#21 - Darf 917 Rake (1364)

Darf 917 Rake (1364), Darf 917 16 wheel rake, walking tandems. Notes: Item Location: Gordon, NE 69343 Equipment Sold "AS IS, WHERE IS": All equipment/property is sold "AS IS, WHERE IS" with no warranty or guarantees, expressed or implied, No operational assessments have been made by DPA Auctions on this item, it has been photographed ONLY



#22 - Kelly Ryan Feeder Wagon (PZ1360)

Kelly Ryan Feeder Wagon (PZ1360), Kelly Ryan Feeder Wagon 4 x 10, gas engine, hydraulic pump, or can be run by PTO, New up right chain 5 year ago, always shedded. Notes: Haven't used for 3 years. Item Location: Indianola, IA 50125 Equipment Sold "AS IS, WHERE IS": All equipment/property is sold "AS IS, WHERE IS" with no warranty or guarantees, expressed or implied, No operational assessments have been made by DPA Auctions on this item, it has been photographed ONLY



#24 - 2002 Mack CX613 Truck (PZ1336)

2002 Mack CX613 Truck (PZ1336), diesel engine, 9 speed transmission, heat, cruise control, engine brake, tandem axle, full screw, air ride suspension, PTO, shows 793,680 miles. Notes: Truck runs but has engine issues. Please contact seller for more information. Item Location: Belleville, IL 62222 Equipment Sold "AS IS, WHERE IS": All equipment/property is sold "AS IS, WHERE IS" with no warranty or guarantees, expressed or implied, No operational assessments have been made by DPA Auctions on this item, it has been photographed ONLY



#25 - NH3 Storage Tank (CP1007)

NH3 Storage Tank (CP1007), 11,000 gallon NH3 storage tank, tank volume gauge, valve, concrete saddles, No data plate, South tank in row, sandblasted and painted one year ago. Notes: This tank must be removed by June 1st, 2019 with NO exceptions. Dismantle, removal and transportation is at the expense, risk and liability of the buyer. Item Location: Lacona, IA 50139 Equipment Sold "AS IS, WHERE IS": All equipment/property is sold "AS IS, WHERE IS" with no warranty or guarantees, expressed or implied, No operational assessments have been made by DPA Auctions on this item, it has been photographed ONLY



#26 - 2016 LPX 2000 Portable (TR7606)

2016 LPX 2000 Portable (TR7606), 230V 1PH: 17' USC Inlet Conveyor, 32' Outlet USC Conveyor, 65 unit inlet hopper, Seed Wheel, Portable LPX 6' Drum, 1PH 230V, Hybrid, Automated, 5hp or 7.5hp In/Out, Seed wheel, 12" extension, USC Automated 4 pump controller for flow meter multi pump stands, Flow meter multi-pump controller pump stand, 30 gallon stainless, volumetric flow meter, 2 pump head (10-135 fl oz/min), Box mount, Calibration Tube, Flow Meter multi pump controller, 15 gallon poly tank with agitation, volumetric flow meter, 5-65 fl oz/min, 1 pump head, box mount and calibration tube, mounted on 2016 Topeka Metal Specialties tandem axle gooseneck trailer, approx. 25' x 96" deck, ST235/80R16 tires, Bargman breakaway switch, GVWR 14,000lbs. Treater has been used only two seasons with approx. 15,000 units through it. Excellent condition. Notes: Item Location: Cozad, NE 69130 Equipment Sold "AS IS, WHERE IS": All equipment/property is sold "AS IS, WHERE IS" with no warranty or guarantees, expressed or implied, No operational assessments have been made by DPA Auctions on this item, it has been photographed ONLY



#27 - 2009 John Deere 2210L Field Cultivator (PZ1356)

2009 John Deere 2210L Field Cultivator (PZ1356), 2009 John Deere 37' 2210L S-Tine field cultivator, 4" sweeps, 3-bar harrow, rolling basket. Notes: Item Location: Taylorville, IL 62568 Equipment Sold "AS IS, WHERE IS": All equipment/property is sold "AS IS, WHERE IS" with no warranty or guarantees, expressed or implied, No operational assessments have been made by DPA Auctions on this item, it has been photographed ONLY



#28 - Great Plains Drill (PZ1359)

Great Plains Drill (PZ1359), Model 2SF30-487590 Great Plains 30' Solid Stand drill, 7.5" spacing, new double disk openers 400 acres ago, 4 new transport tires, new bearings in swing arms. Notes: Item Location: Indianola, IA 50125 Equipment Sold "AS IS, WHERE IS": All equipment/property is sold "AS IS, WHERE IS" with no warranty or guarantees, expressed or implied, No operational assessments have been made by DPA Auctions on this item, it has been photographed ONLY



#29 - 1998 John Deere 8100 Tractor (NP8018)

1998 John Deere 8100 Tractor (NP8018), John Deere diesel engine (S/N RG6081H042946), heat, air conditioning, Am/Fm radio, 18.4R46 rear duals, 1000 PTO, 3 port hydraulics, (14) front suitcase weights, NEW 42.2 GPM hydraulic pump, auto trac ready, StarFire 3000 globe, shows 5,244 hours. Notes: ONE OWNER TRACTOR. JD 2630 monitor DOES NOT sell with this tractor, it will sell with the 1770NT Planter selling separately on this auction. Item Location: Vliets, KS 66544 Equipment Sold "AS IS, WHERE IS": All equipment/property is sold "AS IS, WHERE IS" with no warranty or guarantees, expressed or implied, No operational assessments have been made by DPA Auctions on this item, it has been photographed ONLY



#30 - 2012 John Deere 4830 Sprayer (ED889)

2012 John Deere 4830 Sprayer (ED889), John Deere engine, hydrostatic transmission, A/C, heat, AM/FM radio, 1000 Stainless Steel tank, 100' booms, Michelin Spraybibs 380/90R46 Row Crop tires, Fenders, Starfire 3000 Globe, 2630 monitor, seller has manufacturer certificate of origin, shows 4188 hours. Notes: Item Location: Huntingburg, IN 47542 Equipment Sold "AS IS, WHERE IS": All equipment/property is sold "AS IS, WHERE IS" with no warranty or guarantees, expressed or implied, No operational assessments have been made by DPA Auctions on this item, it has been photographed ONLY



#31 - 1999 8103 TerraGator (TH438)

1999 8103 TerraGator (TH438), 8.1L John Deere engine, 11 speed power shift, Raven Viper Pro for rate control (Variable Rate Capable) and mapping/ guidance, the Box is a 2012 model New Leader L4000 G4 Multiplier Ready Box, box is in excellent shape and has been recently rebuilt with new belt over chain apron, bearings, spinners, and hydraulic hoses on back. (This work was done last winter), chassis has approx. 5800 hours and is in very good shape with very little rust, new reman injection pump installed by Deere about 300 hours ago, also had new brake chambers, engine mount brackets, and A/C condenser installed within last year, the chassis was professionally blasted and painted from cab back before box was installed, front tire is Firestone radial at about 40%, rear tires are about 25%. Notes: Machine has been through shop and had dealer inspections done on it. Machine is in excellent mechanical shape and is one of the cleanest 8103's you will find. We are selling because we have bought another spreader capable of spreading row crops and don't have a need for it anymore. Item Location: Hortonville, WI 54944 Equipment Sold "AS IS, WHERE IS": All equipment/property is sold "AS IS, WHERE IS" with no warranty or guarantees, expressed or implied, No operational assessments have been made by DPA Auctions on this item, it has been photographed ONLY



#32 - Hardi HC 1200 Commander Plus Sprayer (PD1241)

Hardi HC 1200 Commander Plus Sprayer (PD1241), 90 foot twin HA2 booms, chemical fill and rinse, 20 gallon hi-cap foamer, rinse system, 12 volt outlet box, 4 inch manifold gauge, boom wheel kit, LH storage locker, 120 inch axle, steering drawbar, mustang controller, pressure transducer, foot operated switch, 2 end nozzle kits. Notes: Item Location: Hinton, IA 51024 Equipment Sold "AS IS, WHERE IS": All equipment/property is sold "AS IS, WHERE IS" with no warranty or guarantees, expressed or implied, No operational assessments have been made by DPA Auctions on this item, it has been photographed ONLY



#33 - NH3 Storage Tank (CP1008)

NH3 Storage Tank (CP1008), 11,000 gallon NH3 storage tank, tank volume gauge, valve, concrete saddles, No data plate, Middle tank in row, sandblasted and painted one year ago. Notes: This tank must be removed by June 1st, 2019 with NO exceptions. Dismantle, removal and transportation is at the expense, risk and liability of the buyer. Item Location: Lacona, IA 50139 Equipment Sold "AS IS, WHERE IS": All equipment/property is sold "AS IS, WHERE IS" with no warranty or guarantees, expressed or implied, No operational assessments have been made by DPA Auctions on this item, it has been photographed ONLY



#34 - 1992 Wheeler Hopper Bottom (ED886)

1992 Wheeler Hopper Bottom (ED886), steel, dual hopper bottom, 40 foot long, spring suspension, tarp is in good condition, brakes are good, tires are 11R 22.5 at 50%. Notes: Item Location: Lake Village, IN 46349 Equipment Sold "AS IS, WHERE IS": All equipment/property is sold "AS IS, WHERE IS" with no warranty or guarantees, expressed or implied, No operational assessments have been made by DPA Auctions on this item, it has been photographed ONLY



#35 - 1998 Ford AT9513 (ME424)

1998 Ford AT9513 (ME424), Detroit diesel engine, 350HP, 7-speed transmission, cruise control, AM/FM/CD aftermarket stereo, AC/ Heat, power seat, 285/75R 24.5 Low-Pro tires in good condition, shows 851,572 miles. Notes: Trailer attached to truck in photos is not included with this lot. Item Location: Burr Oak, KS 66936 Equipment Sold "AS IS, WHERE IS": All equipment/property is sold "AS IS, WHERE IS" with no warranty or guarantees, expressed or implied, No operational assessments have been made by DPA Auctions on this item, it has been photographed ONLY



#36 - 2004 John Deere 4710 Sprayer (PZ1368)

2004 John Deere 4710 Sprayer (PZ1368), John Deere diesel engine, hydrostatic transmission, air conditioning, heat, Am/Fm radio, 800 gallon stainless steel liquid system, 90' boom, 20" spacing, foam marker, poly foam marker tank, front load, weights, Firestone 380/90R46 tires, fenders, shows 660 hours (there is approx. 3600 hours on machine). Notes: Item Location: Beason, IL 62512 Equipment Sold "AS IS, WHERE IS": All equipment/property is sold "AS IS, WHERE IS" with no warranty or guarantees, expressed or implied, No operational assessments have been made by DPA Auctions on this item, it has been photographed ONLY



#37 - Progressive 2450 Applicator (PZ1366)

Progressive 2450 Applicator (PZ1366), Progressive 2450 15 coulter liquid injection applicator, inject nozzles, 1000 gallon poly liquid tank, hydraulic wings, 18.4-26 tires. Notes: Pump is NOT included. Item Location: Beason, IL 62512 Equipment Sold "AS IS, WHERE IS": All equipment/property is sold "AS IS, WHERE IS" with no warranty or guarantees, expressed or implied, No operational assessments have been made by DPA Auctions on this item, it has been photographed ONLY



#38 - 1994 Mid State Liquid Nurse Tank (PZ1367)

1994 Mid State Liquid Nurse Tank (PZ1367), 1994 Mid State 1800 gallon stainless steel liquid nurse tank. Notes: Running gear NOT included. Item Location: Beason, IL 62512 Equipment Sold "AS IS, WHERE IS": All equipment/property is sold "AS IS, WHERE IS" with no warranty or guarantees, expressed or implied, No operational assessments have been made by DPA Auctions on this item, it has been photographed ONLY



#39 - 2007 Krause 4850-15 Dominator (PZ1357)

2007 Krause 4850-15 Dominator (PZ1357), 2007 Krause 4850-15 Dominator, round bar, rolling baskets, front discs, tandem walking axles, rear fluted blades. Notes: Item Location: Taylorville, IL 62568 Equipment Sold "AS IS, WHERE IS": All equipment/property is sold "AS IS, WHERE IS" with no warranty or guarantees, expressed or implied, No operational assessments have been made by DPA Auctions on this item, it has been photographed ONLY



#40 - 2009 John Deere 1770NT CCS Planter (NP8019)

2009 John Deere 1770NT CCS Planter (NP8019), 16R30, variable rate drive, vacuum hydraulic, pneumatic down force system, (2) 50 bushel tanks, row command electric clutches, rubber tire closing wheels, Yetter row cleaners, (10) front suitcase weights, NEW True Vee disc blades and gauge wheel arms in 2018, JD 2630 monitor. Notes: Item Location: Vliets, KS 66544 Equipment Sold "AS IS, WHERE IS": All equipment/property is sold "AS IS, WHERE IS" with no warranty or guarantees, expressed or implied, No operational assessments have been made by DPA Auctions on this item, it has been photographed ONLY



#41 - (1) John Deere Planter Row Unit (NP8020)

(1) John Deere Planter Row Unit (NP8020), with planter box. Notes: Item Location: Baileyville, KS 66404 Equipment Sold "AS IS, WHERE IS": All equipment/property is sold "AS IS, WHERE IS" with no warranty or guarantees, expressed or implied, No operational assessments have been made by DPA Auctions on this item, it has been photographed ONLY



#42 - 1971 Fruehauf Fuel Trailer (NP8016)

1971 Fruehauf Fuel Trailer (NP8016), tandem axle, spring suspension, pump, hose reel, approx. 9,000 gallon capacity (3,000 - 1,250 - 1,750 - 3,000), max load 59,000lbs. Notes: Item Location: Pawhuska, OK 74056 Equipment Sold "AS IS, WHERE IS": All equipment/property is sold "AS IS, WHERE IS" with no warranty or guarantees, expressed or implied, No operational assessments have been made by DPA Auctions on this item, it has been photographed ONLY



#43 - 2011 John Deere 4930 Sprayer (PZ1374, Unit 1022)

2011 John Deere 4930 Sprayer (PZ1374, Unit 1022), John Deere diesel engine, hydrostatic transmission, air conditioning, heat, Am/Fm CD stereo, 1200 gallon stainless steel liquid system, 120' boom, stainless steel chemical inductor, Vogelsang front load filling system, Firestone Radial 9100 380/105R50 tires, StarFire 3000 globe, shows 5690 hours. Notes: Item Location: Union, IA 50258 Equipment Sold "AS IS, WHERE IS": All equipment/property is sold "AS IS, WHERE IS" with no warranty or guarantees, expressed or implied, No operational assessments have been made by DPA Auctions on this item, it has been photographed ONLY



#44 - Ray Man Dry Conveyor (PZ1381, Unit M79)

Ray Man Dry Conveyor (PZ1381, Unit M79), Ray Man model FL30D conveyor, 30" belt, hopper, Deutz 46 hp diesel engine, hydraulic raise/lower, portable, 11R22.5 tires, pintal hitch, MID:COM remote receiver, shows 251 hours. Notes: Item Location: Union, IA 50258 Equipment Sold "AS IS, WHERE IS": All equipment/property is sold "AS IS, WHERE IS" with no warranty or guarantees, expressed or implied, No operational assessments have been made by DPA Auctions on this item, it has been photographed ONLY



#45 - Simonsen 4816 Dry Tender Box (PZ1373)

Simonsen 4816 Dry Tender Box (PZ1373), Simonsen 4816 dry tender box, rear discharge auger, all hydraulic. Notes: Running gear NOT included. Item Location: Union, IA 50258 Equipment Sold "AS IS, WHERE IS": All equipment/property is sold "AS IS, WHERE IS" with no warranty or guarantees, expressed or implied, No operational assessments have been made by DPA Auctions on this item, it has been photographed ONLY



#46 - 2002 Mustang 2054 Skid Steer (PZ1370, L35)

2002 Mustang 2054 Skid Steer (PZ1370, L35), 2002 Mustang 2054 skid steer, diesel engine (blown motor), hydrostatic transmission, canopy, lights, bucket, NON runner, shows 2228 hours. Notes: Item Location: Union, IA 50258 Equipment Sold "AS IS, WHERE IS": All equipment/property is sold "AS IS, WHERE IS" with no warranty or guarantees, expressed or implied, No operational assessments have been made by DPA Auctions on this item, it has been photographed ONLY



#47 - 2000 Neville Tender Trailer (PZ1376, Unit 177T)

2000 Neville Tender Trailer (PZ1376, Unit 177T), 2000 Neville tender trailer, approx. 25' main deck, 11' top deck, tandem axle, 255/70R22.5 tires. Notes: Item Location: Union, IA 50258 Equipment Sold "AS IS, WHERE IS": All equipment/property is sold "AS IS, WHERE IS" with no warranty or guarantees, expressed or implied, No operational assessments have been made by DPA Auctions on this item, it has been photographed ONLY



#48 - 1992 Ford L8000 Truck (PZ1371, Unit 501)

1992 Ford L8000 Truck (PZ1371, Unit 501), diesel engine, 7 speed transmission, air conditioning, heat, Am/Fm radio, tandem axle, full screw, approx. 14' 5" flatbed, 275/80R22.5 front tires, 295/75R22.5 rear tires, shows 310,130 miles. Notes: Item Location: Union, IA 50258 Equipment Sold "AS IS, WHERE IS": All equipment/property is sold "AS IS, WHERE IS" with no warranty or guarantees, expressed or implied, No operational assessments have been made by DPA Auctions on this item, it has been photographed ONLY



#49 - 1997 Chevrolet 3500 Flatbed Pickup (PZ1377, Unit 107)

1997 Chevrolet 3500 Flatbed Pickup (PZ1377, Unit 107), 4x4, gas engine, automatic transmission, air conditioning, heat, Am/Fm cassette radio, cruise control, dually, running boards, LT225/75R16 tires, shows 155,793 miles. Notes: Transmission issues, cords showing on rear tires.. Item Location: Ackley, IA 50601 Equipment Sold "AS IS, WHERE IS": All equipment/property is sold "AS IS, WHERE IS" with no warranty or guarantees, expressed or implied, No operational assessments have been made by DPA Auctions on this item, it has been photographed ONLY



#50 - New L3030 G4 Leader Dry Spreader Box (PZ1372)

New L3030 G4 Leader Dry Spreader Box (PZ1372), New Leader L3030 G4 - 11 stainless steel dry spreader box (S/N 131998), twin spinner, all hydraulic, MultiApplier - 5 insert, lifting kit goes with this box. Notes: Item Location: Union, IA 50258 Equipment Sold "AS IS, WHERE IS": All equipment/property is sold "AS IS, WHERE IS" with no warranty or guarantees, expressed or implied, No operational assessments have been made by DPA Auctions on this item, it has been photographed ONLY



#51 - 1979 Ford 8000 Grain Truck (PZ1390, Unit 102)

1979 Ford 8000 Grain Truck (PZ1390, Unit 102), 3208 Cat diesel engine, Roadranger RT-613 transmission, heat, tandem axle, full screw, KANN 22' aluminum grain box, twin hoist, rear cargo doors, grain chute, roll over tarp, 315/80R22.5 front tires, 11R22.5 rear tires, shows 389,206 miles. Notes: Item Location: Independence, IA 50644 Equipment Sold "AS IS, WHERE IS": All equipment/property is sold "AS IS, WHERE IS" with no warranty or guarantees, expressed or implied, No operational assessments have been made by DPA Auctions on this item, it has been photographed ONLY



#52 - 2011 Terra Gator 8204 Dry Floater (PZ1385, Unit 348)

2011 Terra Gator 8204 Dry Floater (PZ1385, Unit 348), Cat diesel engine, Terra Shift transmission, air conditioning, heat, Am/Fm CD stereo, New Leader L4000 G4 - 14 VRT stainless steel dry spreader box (S/N 131771), twin spinner, all hydraulic, MultiApplier - 5 insert, S/N 131772, Good Year Optitorque 750/50R26 front tires, Michelin Mega Bib 1050/50R32 rear tires, Raven SmarTrax, lightbar, Raven monitor, shows 6597 hours. Notes: Item Location: Waukon, IA 52172 Equipment Sold "AS IS, WHERE IS": All equipment/property is sold "AS IS, WHERE IS" with no warranty or guarantees, expressed or implied, No operational assessments have been made by DPA Auctions on this item, it has been photographed ONLY



#53 - 2005 Chevrolet 2500HD Pickup (PZ1384, Unit 258)

2005 Chevrolet 2500HD Pickup (PZ1384, Unit 258), 4x4, Duramax 6.6 Turbo diesel engine, automatic transmission, air conditioning, heat, Am/Fm radio, cruise control, running boards, LT245/75R16 tires, shows 221,701 miles. Notes: Item Location: Waukon, IA 52172 Equipment Sold "AS IS, WHERE IS": All equipment/property is sold "AS IS, WHERE IS" with no warranty or guarantees, expressed or implied, No operational assessments have been made by DPA Auctions on this item, it has been photographed ONLY



#54 - Feco Dry Conveyor (PZ1404, Unit M10)

Feco Dry Conveyor (PZ1404, Unit M10), Feco model HPC30A conveyor, 30" belt, hopper, Deutz diesel engine, hydraulic raise/lower, portable, 425/65R22.5 tires, pintal hitch, shows 1341 hours. Notes: Item Location: Cascade, IA 52033 Equipment Sold "AS IS, WHERE IS": All equipment/property is sold "AS IS, WHERE IS" with no warranty or guarantees, expressed or implied, No operational assessments have been made by DPA Auctions on this item, it has been photographed ONLY



#55 - Friesen Seed Tender (PZ1405, Unit S36)

Friesen Seed Tender (PZ1405, Unit S36), Friesen 4 box seed tender, side auger, Honda GX160 5.5 hp gas engine, tandem axle, LT235/85R16 tires, remote cord. Notes: Item Location: Cascade, IA 52033 Equipment Sold "AS IS, WHERE IS": All equipment/property is sold "AS IS, WHERE IS" with no warranty or guarantees, expressed or implied, No operational assessments have been made by DPA Auctions on this item, it has been photographed ONLY



#56 - 1990 Terra Gator 1803 (ED891)

1990 Terra Gator 1803 (ED891), Cummins diesel engine, engine overhaul 3/13/2006, 66 inch floater tires, shows 8925 hours. Notes: Item Location: Huntingburg, IN 47542 Equipment Sold "AS IS, WHERE IS": All equipment/property is sold "AS IS, WHERE IS" with no warranty or guarantees, expressed or implied, No operational assessments have been made by DPA Auctions on this item, it has been photographed ONLY



#57 - Hardi Navigator 1000 Sprayer (PD1240)

Hardi Navigator 1000 Sprayer (PD1240), 60 foot booms, 20 inch nozzle spacing, 1000 gallon tank, foam marker, Raven sprayer control, rinse tank, brand new pump - only 4 loads. Notes: Item Location: Wheatland, IA 52777 Equipment Sold "AS IS, WHERE IS": All equipment/property is sold "AS IS, WHERE IS" with no warranty or guarantees, expressed or implied, No operational assessments have been made by DPA Auctions on this item, it has been photographed ONLY



#58 - 4000 Gallon Heavy Poly Water Holding Tank (PD1244)

4000 Gallon Heavy Poly Water Holding Tank (PD1244), 4 or 5 steel bands for hold down, water nurse tank was used on sprayer, 2 inch banjo valve, top or bottom fill, always stored inside. Notes: Item Location: Wheatland, IA 52777 Equipment Sold "AS IS, WHERE IS": All equipment/property is sold "AS IS, WHERE IS" with no warranty or guarantees, expressed or implied, No operational assessments have been made by DPA Auctions on this item, it has been photographed ONLY



#59 - Cat V40B Forklift (PZ1365)

Cat V40B Forklift (PZ1365), gas or LP engine, shuttle shift transmission, canopy, lights. Notes: No LP tank. Item Location: Troy, IA 52537 Equipment Sold "AS IS, WHERE IS": All equipment/property is sold "AS IS, WHERE IS" with no warranty or guarantees, expressed or implied, No operational assessments have been made by DPA Auctions on this item, it has been photographed ONLY



#60 - 2003 John Deere 1790 Inter Planter (PZ1365)

2003 John Deere 1790 Inter Planter (PZ1365), 2003 John Deere 1790 Inter Planter, 16/32 row, CSC dual 45 bushel tanks, 4 - 80 gallon liquid fertilizer tanks, Precision plant equipment, air down pressure, 20/20 seed sense liquid fertilizer monitor. Notes: Item Location: Erie, IL 61250 Equipment Sold "AS IS, WHERE IS": All equipment/property is sold "AS IS, WHERE IS" with no warranty or guarantees, expressed or implied, No operational assessments have been made by DPA Auctions on this item, it has been photographed ONLY



#61 - 1999 Terra Gator 9103 Floater (AL627)

1999 Terra Gator 9103 Floater (AL627), Cat 3176 diesel engine, 18 speed transmission, air conditioning, heat, am/FM radio. Notes: Item Location: Oblong, IL 62449 Equipment Sold "AS IS, WHERE IS": All equipment/property is sold "AS IS, WHERE IS" with no warranty or guarantees, expressed or implied, No operational assessments have been made by DPA Auctions on this item, it has been photographed ONLY



#62 - HC 950 Hardi Sprayer (DL485)

HC 950 Hardi Sprayer (DL485), HC 950 Hardi Sprayer, 90' booms, 950 gal tank, new pump, agleader flow control valve, foamer does not work, new pump in 2014, triple quick turn tips, new air induction nozzles in 2014, 12 gallon acr at 60psi at 8mph. Notes: Sprayer was last used in 2017. Item Location: Chariton, IA 50049 Equipment Sold "AS IS, WHERE IS": All equipment/property is sold "AS IS, WHERE IS" with no warranty or guarantees, expressed or implied, No operational assessments have been made by DPA Auctions on this item, it has been photographed ONLY



#63 - 1995 International 8200 Knuckle Boom Truck (PD1246)

1995 International 8200 Knuckle Boom Truck (PD1246), M11 diesel engine, 9 speed manual transmission, truck has been regularly maintained, single axle, recently replaced the clutch, great tires, ready to go to work, boom is IMT model 725 with 8000 pound lift rating, 2 hydraulic extensions, one manual extension for 35 foot of boom each, 14 foot flatbed. Notes: Item Location: Ridott, IL 61067 Equipment Sold "AS IS, WHERE IS": All equipment/property is sold "AS IS, WHERE IS" with no warranty or guarantees, expressed or implied, No operational assessments have been made by DPA Auctions on this item, it has been photographed ONLY



#64 - NH3 Storage Tank (CP1010)

NH3 Storage Tank (CP1010), 11,000 gallon NH3 storage tank, tank volume gauge, valve, concrete saddles, No data plate, North tank in row, sandblasted and painted one year ago. Notes: This tank must be removed by June 1st, 2019 with NO exceptions. Dismantle, removal and transportation is at the expense, risk and liability of the buyer. Item Location: Lacona, IA 50139 Equipment Sold "AS IS, WHERE IS": All equipment/property is sold "AS IS, WHERE IS" with no warranty or guarantees, expressed or implied, No operational assessments have been made by DPA Auctions on this item, it has been photographed ONLY



#65 - Fairmont MT19a Railroad Motorcar (NP8013)

Fairmont MT19a Railroad Motorcar (NP8013), great running Onan 20HP engine, transmission forward, reverse w/ high and low, glass and wipers are excellent, spring suspension, leather seats, all light works, wheels in excellent condition, side curtains in good shape and well done, electric push button turn table making turning around so easy. Notes: This speeder has had great maintenance and care. Item Location: Cleveland, MO 64734 Equipment Sold "AS IS, WHERE IS": All equipment/property is sold "AS IS, WHERE IS" with no warranty or guarantees, expressed or implied, No operational assessments have been made by DPA Auctions on this item, it has been photographed ONLY



#66 - 2004 John Deere 45' 2210L Field Cultivator (PZ1358)

2004 John Deere 45' 2210L Field Cultivator (PZ1358), 2004 John Deere 45' 2210L S-Tine field cultivator, 4" sweeps, 3-bar harrow, rolling baskets, 12.5 implement tires. Notes: Item Location: Taylorville, IL 62568 Equipment Sold "AS IS, WHERE IS": All equipment/property is sold "AS IS, WHERE IS" with no warranty or guarantees, expressed or implied, No operational assessments have been made by DPA Auctions on this item, it has been photographed ONLY



#67 - 1977 Trailmobile Fuel Trailer (NP8017)

1977 Trailmobile Fuel Trailer (NP8017), Model F15S-4CCH, tandem axle, spring suspension, approx. 8,750 gallon capacity (2,700 - 1,400 - 600 - 800 - 1,000 - 2,250), GVWR 66,680 lbs, HEAD Mat'l 5454-0, SHELL Mat'l 5454-H32, WELD Mat'l 5356, Scully Load Anywhere Overfill Prevention Monitor. Notes: Item Location: Pawhuska, OK 74056 Equipment Sold "AS IS, WHERE IS": All equipment/property is sold "AS IS, WHERE IS" with no warranty or guarantees, expressed or implied, No operational assessments have been made by DPA Auctions on this item, it has been photographed ONLY



#68 - Continental Flotation Tires (PZ1375)

Continental Flotation Tires (PZ1375), 4 - Continental SVT 710/70R42 flotation tires and rims. Notes: Item Location: Union, IA 50258 Equipment Sold "AS IS, WHERE IS": All equipment/property is sold "AS IS, WHERE IS" with no warranty or guarantees, expressed or implied, No operational assessments have been made by DPA Auctions on this item, it has been photographed ONLY



#69 - 2013 John Deere 4940 Sprayer (PZ1378, Unit 1026)

2013 John Deere 4940 Sprayer (PZ1378, Unit 1026), diesel engine (RG6090R032148), hydrostatic transmission, air conditioning, heat, Am/Fm CD stereo, 1200 gallon stainless steel liquid system, 120' boom, stainless steel chemical inductor, Vogelsang front load filling system, Firestone Radial 9100 380/105R50 tires, StarFire globe, John Deere Greenstar 3 monitor, shows 4600 hours. Notes: Item Location: Ackley, IA 50601 Equipment Sold "AS IS, WHERE IS": All equipment/property is sold "AS IS, WHERE IS" with no warranty or guarantees, expressed or implied, No operational assessments have been made by DPA Auctions on this item, it has been photographed ONLY



#70 - 2009 RoGator 1084 Sprayer (PZ1403, Unit 239)

2009 RoGator 1084 Sprayer (PZ1403, Unit 239), Cat diesel engine, hydrostatic transmission, air conditioning, heat, Am/Fm CD stereo, 1080 gallon stainless steel liquid system (S/N LAGCA1084KNU001025), 90' boom, foam marker, stainless steel foam marker tank, top poly rinse tank, poly chemical inductor, Michelin Agribib 380/90R46 tires (The flotation tires that are pictured on the sprayer will be sold separately, they will NOT sell with the sprayer), Raven SmarTrax, Raven controller, lightbar, shows 4594 hours. Notes: Item Location: Hopkinton, IA 52237 Equipment Sold "AS IS, WHERE IS": All equipment/property is sold "AS IS, WHERE IS" with no warranty or guarantees, expressed or implied, No operational assessments have been made by DPA Auctions on this item, it has been photographed ONLY



#71 - Feco Dry Conveyor (PZ1442, Unit M21)

Feco Dry Conveyor (PZ1442, Unit M21), Feco model HPC30A conveyor, 30" belt, hopper, Deutz diesel engine, hydraulic raise/lower, portable, 425/65R22.5 tires, pintal hitch, shows 1361 hours. Notes: Item Location: Oran, IA 50664 Equipment Sold "AS IS, WHERE IS": All equipment/property is sold "AS IS, WHERE IS" with no warranty or guarantees, expressed or implied, No operational assessments have been made by DPA Auctions on this item, it has been photographed ONLY



#72 - 3200 Gallon Liquid Tank (PZ1388)

3200 Gallon Liquid Tank (PZ1388), 3200 gallon poly liquid nurse tank, craddle. Notes: Item Location: Oran, IA 50664 Equipment Sold "AS IS, WHERE IS": All equipment/property is sold "AS IS, WHERE IS" with no warranty or guarantees, expressed or implied, No operational assessments have been made by DPA Auctions on this item, it has been photographed ONLY



#73 - 1991 Mack RD690S Truck (PZ1387, Unit 304)

1991 Mack RD690S Truck (PZ1387, Unit 304), Mack EM7-300 diesel engine, Maxitorque transmission, air conditioning, heat, Am/Fm cassette radio, cruise control, engine brake, tandem axle, full screw, 425/65R22.5 front tires, 295/75R22.5 rear tires, shows 237,135 miles. Notes: Item Location: Oran, IA 50664 Equipment Sold "AS IS, WHERE IS": All equipment/property is sold "AS IS, WHERE IS" with no warranty or guarantees, expressed or implied, No operational assessments have been made by DPA Auctions on this item, it has been photographed ONLY



#74 - Willmar 16 ton Dry Tender Box (PZ1400)

Willmar 16 ton Dry Tender Box (PZ1400), Willmar 16 ton dry tender box, rear discharge auger, all hydraulic, roll over tarp. Notes: Item Location: Hopkinton, IA 52237 Equipment Sold "AS IS, WHERE IS": All equipment/property is sold "AS IS, WHERE IS" with no warranty or guarantees, expressed or implied, No operational assessments have been made by DPA Auctions on this item, it has been photographed ONLY



#75 - 1978 Hobbs Trailer (PZ1395, Unit 029T)

1978 Hobbs Trailer (PZ1395, Unit 029T), 1978 Hobbs trailer, approx. 26', 8' top deck, tandem axle, 285/75R24.5 tires. Notes: Item Location: Farley, IA 52046 Equipment Sold "AS IS, WHERE IS": All equipment/property is sold "AS IS, WHERE IS" with no warranty or guarantees, expressed or implied, No operational assessments have been made by DPA Auctions on this item, it has been photographed ONLY



#76 - 1992 GMC TopKick Truck (PZ1394, Unit 100)

1992 GMC TopKick Truck (PZ1394, Unit 100), 3116 Cat diesel engine, 6 speed transmission, heat, Am/Fm radio, single axle, 295/75R22.5 front tires, 11R22.5 rear tires, shows 287,257 miles. Notes: Item Location: Farley, IA 52046 Equipment Sold "AS IS, WHERE IS": All equipment/property is sold "AS IS, WHERE IS" with no warranty or guarantees, expressed or implied, No operational assessments have been made by DPA Auctions on this item, it has been photographed ONLY



#77 - 1993 Freightliner FLD 120 Truck (PZ1397, Unit 61)

1993 Freightliner FLD 120 Truck (PZ1397, Unit 61), Cat diesel engine, Rockwell 9 speed transmission, air conditioning, heat, Am/Fm radio, cruise control, engine brake, tandem axle, full screw, air ride suspension, (Tender box NOT included), 315/80R22.5 front tires, 285/75R24.5 rear tires. Notes: Willmar tender box NOT included. Item Location: Hopkinton, IA 52237 Equipment Sold "AS IS, WHERE IS": All equipment/property is sold "AS IS, WHERE IS" with no warranty or guarantees, expressed or implied, No operational assessments have been made by DPA Auctions on this item, it has been photographed ONLY



#78 - 1974 Mississippi Tank NH3 Transport Trailer (PZ1382, Unit 125T)

1974 Mississippi Tank NH3 Transport Trailer (PZ1382, Unit 125T), 1974 Mississippi Tank 10,500 gallon NH3 transport trailer, WP 265 LBS, DIA 85", 456 1/2" Length, HD. TH. .25", SHL. TH. .402", 150 F Max Temp, tandem axle, Blackmer pump, 285/75R24.5 tires, aluminum rims, (Cracks inside tank), National Board #6419. Notes: Cracks inside tank. Please call seller for more information. Item Location: Ackley, IA 50601 Equipment Sold "AS IS, WHERE IS": All equipment/property is sold "AS IS, WHERE IS" with no warranty or guarantees, expressed or implied, No operational assessments have been made by DPA Auctions on this item, it has been photographed ONLY



#79 - New Leader L3030 G4 Dry Spreader Box (PZ1379)

New Leader L3030 G4 Dry Spreader Box (PZ1379), New Leader L3030 G4 - 11 stainless steel dry spreader box (S/N 135604), twin spinner, all hydraulic, MultApplier - 5 insert, lifting kit goes with this box. Notes: Running gear NOT included. Item Location: Ackley, IA 50601 Equipment Sold "AS IS, WHERE IS": All equipment/property is sold "AS IS, WHERE IS" with no warranty or guarantees, expressed or implied, No operational assessments have been made by DPA Auctions on this item, it has been photographed ONLY



#80 - 2012 RoGator 1100 Sprayer (PZ1391, Unit 1001)

2012 RoGator 1100 Sprayer (PZ1391, Unit 1001), SISU diesel engine, hydrostatic transmission, air conditioning, heat, Am/Fm CD stereo, 1100 gallon stainless steel liquid system, 120' boom, top poly rinse tank, poly chemical inductor, Michelin Spraybib VF380/90R46 row crop tires & rims (Flotation tires in picture are NOT selling with the machine), Overview cab camera, shows 4752 hours. Notes: Flotation tires in picture are NOT selling with the machine. Flotation tires will be sold separately in this auction. Item Location: Independence, IA 50644 Equipment Sold "AS IS, WHERE IS": All equipment/property is sold "AS IS, WHERE IS" with no warranty or guarantees, expressed or implied, No operational assessments have been made by DPA Auctions on this item, it has been photographed ONLY



#81 - AG-CHEM L2020G4 Fertilizer Bed (ED892)

AG-CHEM L2020G4 Fertilizer Bed (ED892), fertilizer bed, model 124823, VRT capable, single product, 20" belt. Notes: Item Location: Huntingburg, IN 47542 Equipment Sold "AS IS, WHERE IS": All equipment/property is sold "AS IS, WHERE IS" with no warranty or guarantees, expressed or implied, No operational assessments have been made by DPA Auctions on this item, it has been photographed ONLY



#82 - 4 Continental Floater Tires (ED890)

4 Continental Floater Tires (ED890), total of 4 float tires that would fit a 2012 John Deere 4830, size 650/65R38, 50% tread. Notes: Item Location: Huntingburg, IN 47542 Equipment Sold "AS IS, WHERE IS": All equipment/property is sold "AS IS, WHERE IS" with no warranty or guarantees, expressed or implied, No operational assessments have been made by DPA Auctions on this item, it has been photographed ONLY



#83 - 1990 International 4900 Seed Tender Truck (PD1245)

1990 International 4900 Seed Tender Truck (PD1245), International Detroit 466 engine, 5 speed manual transmission with s speed rear end, transmission was rebuilt approximately 1500 miles ago, tires in great condition, seed tender is 8 ton tender with split hopper, good condition, tender box was converted to a Quality brand rubber conveyor, rubber conveyor was replaced last year, truck has been regularly maintained and is ready to deliver seed, close to 500,000 miles. Notes: Item Location: Ridott, IL 61067 Equipment Sold "AS IS, WHERE IS": All equipment/property is sold "AS IS, WHERE IS" with no warranty or guarantees, expressed or implied, No operational assessments have been made by DPA Auctions on this item, it has been photographed ONLY



#84 - 2007 John Deere 9760 STS Combine (KMK784)

2007 John Deere 9760 STS Combine (KMK784), corn/bean, extended ware package, 4WD, John Deere 9.1L Diesel engine, engine overhauled at 2000 hours, 3 speed, chopper, yield monitor, Bullet Rotor, accumulator, lateral tilt feeder house, feeder reverser, auto sieve adjust, auto reel speed, fore/aft reel, heat and air conditioning, am/fm/wb radio, 20.8 - 46 front dual tires, Michelin 28L - 26 rear tires, shows 2,927 engine hours, shows 1978 separator hours. Notes: 110 point inspection and repairs on 10/23/19. Dennis Walker Precision Balanced. Item Location: Atchison, KS 66002 Equipment Sold "AS IS, WHERE IS": All equipment/property is sold "AS IS, WHERE IS" with no warranty or guarantees, expressed or implied, No operational assessments have been made by DPA Auctions on this item, it has been photographed ONLY



#85 - 2015 Power Plant (DR1458)

2015 Power Plant (DR1458), GM 5.7 liter LP gas engine, digital readout screen, shows 1712 hours, only 400 hours on dealer service and complete tune up, single axle transport gear. Notes: Item Location: Pawnee City, NE 68420 Equipment Sold "AS IS, WHERE IS": All equipment/property is sold "AS IS, WHERE IS" with no warranty or guarantees, expressed or implied, No operational assessments have been made by DPA Auctions on this item, it has been photographed ONLY



#86 - Frontier SB1184 Blower (DR1437)

Frontier SB1184 Blower (DR1437), 540 PTO drive, 3 point mount, hydraulic spout. Notes: Only used once, part of estate. Item Location: Oakland, NE 68045 Equipment Sold "AS IS, WHERE IS": All equipment/property is sold "AS IS, WHERE IS" with no warranty or guarantees, expressed or implied, No operational assessments have been made by DPA Auctions on this item, it has been photographed ONLY



#87 - 2009 John Deere 6130D (DR1436)

2009 John Deere 6130D (DR1436), MFWD, diesel engine, shuttle drive, Power Reversion transmission, John Deere 673 hydraulic front loader, quick tach bucket, pedestal Joystick controls, rear PTO, 3 point hitch, dual hydraulic outlets, rear axle weights, AM/FM CD radio, cab heat/air conditioning, 18.4-38 rear tires, 14.9-24 front tires, shows 502 hours. Notes: Part of an estate. Very clean tractor inside and out! Item Location: Oakland, NE 68045 Equipment Sold "AS IS, WHERE IS": All equipment/property is sold "AS IS, WHERE IS" with no warranty or guarantees, expressed or implied, No operational assessments have been made by DPA Auctions on this item, it has been photographed ONLY



#88 - 1996 International 2674 (DR1443 Unit 99-0208)

1996 International 2674 (DR1443 Unit 99-0208), cab/chassis, Cummins diesel engine, 8 speed lo/lo transmission, tandem axle full screw, double framed. 24' of frame behind the cab, 18,000 lb front axle, 29,000 rears, air lift tag and pusher axles, air brakes, AM/FM radio, cab heat/air conditioning, 425/65R22.5 front tires, 22.5 rear tires, shows 442,614 miles. Notes: Item Location: Cobb, WI 53526 Equipment Sold "AS IS, WHERE IS": All equipment/property is sold "AS IS, WHERE IS" with no warranty or guarantees, expressed or implied, No operational assessments have been made by DPA Auctions on this item, it has been photographed ONLY



#89 - 1994 International 9400 (RMC286 Unit 8988)

1994 International 9400 (RMC286 Unit 8988), Cummins diesel NON RUNNER, (was running when parked), engine, 9 speed transmission, tandem axle full screw, air ride suspension, Adams hydraulic stainless steel dry fertilizer tender box, rear auger, roll tarp, dual aluminum fuel tanks. Notes: This truck was running when they parked it, BUT have been unable to get it running since. Must be some sort of a fuel pickup issue. Item Location: Mc Crory, AR 72101 Equipment Sold "AS IS, WHERE IS": All equipment/property is sold "AS IS, WHERE IS" with no warranty or guarantees, expressed or implied, No operational assessments have been made by DPA Auctions on this item, it has been photographed ONLY



#90 - 2015 Wilson Commander DWH-550CPM Grain Trailer (NP8022)

2015 Wilson Commander DWH-550CPM Grain Trailer (NP8022), 40' length, 66" sides, 96" width, Hendrickson Intraax 66220 axles, air ride suspension, 15" hopper clearance, electric remote doors, manual tarp, 445/50R22.5 super singles, Durabright aluminum wheels, NEW blue tarp, Tiremaaz tire inflation system, front lift axle, synthetic wheel bearing grease extended service not oil bath, aluminum King Pin plate, aluminum sub frame, trailer empty weight 7,800lbs, back up lights, extra lights all with chrome rings, front fenders corner fenders with Wilson flap, stainless steel rear, GVWR 65,000lbs. Notes: ONE OWNER TRAILER, no dents or scrapes, just a few probe dents in slopes. Item Location: Mc Cune, KS 66753 Equipment Sold "AS IS, WHERE IS": All equipment/property is sold "AS IS, WHERE IS" with no warranty or guarantees, expressed or implied, No operational assessments have been made by DPA Auctions on this item, it has been photographed ONLY



#91 - 2007 Freightliner Columbia CL120 Day Cab Truck (NP8097)

2007 Freightliner Columbia CL120 Day Cab Truck (NP8097), Mercedes-Benz diesel engine (450HP), 10 speed transmission, heat, air conditioning, air ride cab, cruise, power windows and mirrors, tandem axle, air ride suspension, 165" wheel base, 11R22.5 tires, 5th wheel plate, dual aluminum fuel tanks, shows 486,637 miles. Notes: Cracked front windshield. Item Location: Marthasville, MO 63357 Equipment Sold "AS IS, WHERE IS": All equipment/property is sold "AS IS, WHERE IS" with no warranty or guarantees, expressed or implied, No operational assessments have been made by DPA Auctions on this item, it has been photographed ONLY



#92 - 2003 IHC 7400 Truck (CP1025, Unit 3094)

2003 IHC 7400 Truck (CP1025, Unit 3094), DT466 diesel engine, Spicer 7 speed transmission, air conditioning, heat, Am/Fm CD stereo, cruise control, tandem axle, full screw, 11R22.5 tires, shows 150,216 miles. Notes: Please allow at least 30 days for title transfer. Item Location: Red Bud, IL 62278 Equipment Sold "AS IS, WHERE IS": All equipment/property is sold "AS IS, WHERE IS" with no warranty or guarantees, expressed or implied, No operational assessments have been made by DPA Auctions on this item, it has been photographed ONLY



#94 - 2015 Vector 300 Chandler Edition Dry Machine (PZ1458)

2015 Vector 300 Chandler Edition Dry Machine (PZ1458), 8.3L Cummins diesel engine, Allison automatic transmission, air conditioning, heat, Am/Fm radio, Chandler stainless steel dry spreader box, twin spinner, all hydraulic, electric roll over tarp, Alliance 650/65R38 turf flotation tires, Raven Viper 4 monitor, Raven SmarTrax, approx. 2200 hours. Notes: Item Location: Summerdale, AL 36580 Equipment Sold "AS IS, WHERE IS": All equipment/property is sold "AS IS, WHERE IS" with no warranty or guarantees, expressed or implied, No operational assessments have been made by DPA Auctions on this item, it has been photographed ONLY



#95 - 2002 International 9200i Truck (NP8116)

2002 International 9200i Truck (NP8116), Cummins N14 diesel engine, 10 speed transmission, heat, air conditioning, Am/Fm radio, 3:73 rear ratio, tandem axle, air ride suspension, 5th wheel plate, 22.5 tires, NEW front tires, 474,055 ACTUAL ECM VERIFIED MILES. Notes: Item Location: Coal Valley, IL 61240 Equipment Sold "AS IS, WHERE IS": All equipment/property is sold "AS IS, WHERE IS" with no warranty or guarantees, expressed or implied, No operational assessments have been made by DPA Auctions on this item, it has been photographed ONLY



#96 - 1989 Ford AeroMax L9000 Truck (PZ1383, Unit 533)

1989 Ford AeroMax L9000 Truck (PZ1383, Unit 533), Cummins diesel engine, 13 speed transmission, air conditioning, heat, Am/Fm cassette radio, tandem axle, full screw, air ride suspension, 11R22.5 tires, aluminum rims, shows 732,475 miles. Notes: Item Location: Ackley, IA 50601 Equipment Sold "AS IS, WHERE IS": All equipment/property is sold "AS IS, WHERE IS" with no warranty or guarantees, expressed or implied, No operational assessments have been made by DPA Auctions on this item, it has been photographed ONLY



#97 - 1988 Polar Liquid Transport Trailer (PZ1406, Unit 51)

1988 Polar Liquid Transport Trailer (PZ1406, Unit 51), 1988 Polar 9500 gallon 4 compartment (3500-2000-1200-2800) aluminum liquid transport trailer, Honda 11 hp gas engine, pump, tandem axle, air ride suspension, 285/75R24.5 tires, aluminum rims, fenders. Notes: Item Location: Monticello, IA 52310 Equipment Sold "AS IS, WHERE IS": All equipment/property is sold "AS IS, WHERE IS" with no warranty or guarantees, expressed or implied, No operational assessments have been made by DPA Auctions on this item, it has been photographed ONLY



#98 - 2003 CEI Pacer Feed Trailer (PZ1396, Unit 131T)

2003 CEI Pacer Feed Trailer (PZ1396, Unit 131T), 2003 CEI Pacer model AT35L 8 compartment aluminum feed trailer, rear auger system, air operated top doors, tandem axle, air ride suspension, 11R24.5 tires, aluminum rims, fenders. Notes: Item Location: Hopkinton, IA 52237 Equipment Sold "AS IS, WHERE IS": All equipment/property is sold "AS IS, WHERE IS" with no warranty or guarantees, expressed or implied, No operational assessments have been made by DPA Auctions on this item, it has been photographed ONLY



#99 - 1991 Ford F800 Dry Tender Truck (PZ1386, Unit 234)

1991 Ford F800 Dry Tender Truck (PZ1386, Unit 234), diesel engine, 6 speed transmission, 2 speed rear end, air conditioning, heat, Am/Fm radio, single axle, Willmar 10 ton dry tender box, rear discharge auger, all hydraulic, roll over tarp, 295/75R22.5 front tires, 11R22.5 rear tires, shows 281,289 miles. Notes: NON runner, transmission problems, brakes locked up, rear auger is disengaged. Item Location: Elkader, IA 52043 Equipment Sold "AS IS, WHERE IS": All equipment/property is sold "AS IS, WHERE IS" with no warranty or guarantees, expressed or implied, No operational assessments have been made by DPA Auctions on this item, it has been photographed ONLY



#100 - 2003 CEI Pacer Feed Trailer (PZ1399, Unit 193T)

2003 CEI Pacer Feed Trailer (PZ1399, Unit 193T), 2003 CEI Pacer model AT35ML 8 compartment aluminum feed trailer, rear auger system, air operated top doors, tandem axle, air ride suspension, Michelin 425/65R22.5 super single tire. Notes: Item Location: Hopkinton, IA 52237 Equipment Sold "AS IS, WHERE IS": All equipment/property is sold "AS IS, WHERE IS" with no warranty or guarantees, expressed or implied, No operational assessments have been made by DPA Auctions on this item, it has been photographed ONLY



#101 - John Deere 2355 (DR1440)

John Deere 2355 (DR1440), diesel engine, 8 speed hi/lo transmission, wide front, rear PTO, rear 3 point hitch, 16.9-30 rear tires, canopy, 9.5L-15 front tires, shows 5540 hours. Notes: Part of an estate. Few of gauges & hour meter are currently not working. Tractor runs and works great, excellent to start. Has mainly been used on gyro mower. 2017 all new tires, alternator and starter. Item Location: Oakland, NE 68045 Equipment Sold "AS IS, WHERE IS": All equipment/property is sold "AS IS, WHERE IS" with no warranty or guarantees, expressed or implied, No operational assessments have been made by DPA Auctions on this item, it has been photographed ONLY



#102 - 1999 Freightliner FLD120 Truck (PZ1398, Unit 467)

1999 Freightliner FLD120 Truck (PZ1398, Unit 467), Cummins M11 - 400E diesel engine, 10 speed transmission, air conditioning, heat, Am/Fm CD stereo, cruise control, engine brake, tandem axle, full screw, air ride suspension, 5th wheel, 285/75R24.5 tires, aluminum rims, shows 946,380 miles. Notes: Item Location: Hopkinton, IA 52237 Equipment Sold "AS IS, WHERE IS": All equipment/property is sold "AS IS, WHERE IS" with no warranty or guarantees, expressed or implied, No operational assessments have been made by DPA Auctions on this item, it has been photographed ONLY



#103 - Fuel Tank (PZ1402)

Fuel Tank (PZ1402), 60 gallon diesel tank, saddle straps. Notes: Item Location: Hopkinton, IA 52237 Equipment Sold "AS IS, WHERE IS": All equipment/property is sold "AS IS, WHERE IS" with no warranty or guarantees, expressed or implied, No operational assessments have been made by DPA Auctions on this item, it has been photographed ONLY



#104 - Continental Flotation Tires (PZ1380)

Continental Flotation Tires (PZ1380), 4 - Continental SVT 710/70R42 flotation tires and rims. Notes: Item Location: Ackley, IA 50601 Equipment Sold "AS IS, WHERE IS": All equipment/property is sold "AS IS, WHERE IS" with no warranty or guarantees, expressed or implied, No operational assessments have been made by DPA Auctions on this item, it has been photographed ONLY



#106 - 2000 International 2574 (DR0277)

2000 International 2574 (DR0277), DT466 diesel engine, 10 speed transmission, tandem axle full screw, air lift tag axle, 20,000 lb front axle, 4000 gallon stainless steel 2 compartment liquid tank, side fill or top snorkel fill for fire hydrant, side or rear flood spray nozzle, 3" hydraulic pump is 1 year old, variable flow control, AM/FM cassette radio, air conditioning, 385/65R22.5 front tires, 11R22.5 rear tires, shows 124,410 miles are not actual, owner believes 3-400,000 actual miles. Notes: Super clean water truck ready to go for spring work. Item Location: Sioux City, IA 51101 Equipment Sold "AS IS, WHERE IS": All equipment/property is sold "AS IS, WHERE IS" with no warranty or guarantees, expressed or implied, No operational assessments have been made by DPA Auctions on this item, it has been photographed ONLY



#107 - 2005 John Deere 4920 Sprayer (PZ1362)

2005 John Deere 4920 Sprayer (PZ1362), John Deere diesel engine, hydrostatic transmission, air conditioning, heat, Am/Fm CD stereo, 1200 gallon stainless steel liquid system, 120' boom, 5 way nozzle bodies, fence row nozzles, Norac UC4 total control, auto air leveling, stainless steel chemical inductor, 3" front fill, Firestone 380/105R50 tires @ 50%, StarFire iTC globe, Brown box, shows 3899 hours. Notes: Item Location: Waldron, IN 46182 Equipment Sold "AS IS, WHERE IS": All equipment/property is sold "AS IS, WHERE IS" with no warranty or guarantees, expressed or implied, No operational assessments have been made by DPA Auctions on this item, it has been photographed ONLY



#108 - 2007 IHC 7400 (DR8490)

2007 IHC 7400 (DR8490), diesel engine, Allison automatic transmission, heat, Am/Fm radio New Leader 3020 G4 hydraulic stainless steel dry spinner box, twin spinner, all hydraulic, 48X31.00-20 front tires, 66X43.00-25 rear tires, New Leader DP.6 Plus controller, shows 48,578 miles. Notes: Item Location: Richview, IL 62877 Equipment Sold "AS IS, WHERE IS": All equipment/property is sold "AS IS, WHERE IS" with no warranty or guarantees, expressed or implied, No operational assessments have been made by DPA Auctions on this item, it has been photographed ONLY



#109 - 2012 CaseIH Patriot 4430 Sprayer (JJ118)

2012 CaseIH Patriot 4430 Sprayer (JJ118), 2012 CaseIH Patriot 4430 Sprayer, 1200 gallon stainless steel tank, 90' booms, tires VF380/90R46, monitor, 4WD, auto steer, shows 2072 hours. Notes: Item Location: Albion, IL 62806 Equipment Sold "AS IS, WHERE IS": All equipment/property is sold "AS IS, WHERE IS" with no warranty or guarantees, expressed or implied, No operational assessments have been made by DPA Auctions on this item, it has been photographed ONLY



#110 - 2012 McFarlane 4045 Reel Disk (ED904)

2012 McFarlane 4045 Reel Disk (ED904), 45 foot 6 inches, spiral chopping reel (center reels updated to new style), 3 bar spike, rolling basket, 6MM blades. Notes: Item Location: Blue Mound, IL 62513 Equipment Sold "AS IS, WHERE IS": All equipment/property is sold "AS IS, WHERE IS" with no warranty or guarantees, expressed or implied, No operational assessments have been made by DPA Auctions on this item, it has been photographed ONLY



#111 - NH3 Storage Tank (CP1011)

NH3 Storage Tank (CP1011), 11,000 gallon NH3 storage tank, tank volume gauge, valve, concrete saddles, No data plate, sandblasted and painted one year ago. Notes: This tank must be removed by June 1st, 2019 with NO exceptions. Dismantle, removal and transportation is at the expense, risk and liability of the buyer. Item Location: Lacona, IA 50139 Equipment Sold "AS IS, WHERE IS": All equipment/property is sold "AS IS, WHERE IS" with no warranty or guarantees, expressed or implied, No operational assessments have been made by DPA Auctions on this item, it has been photographed ONLY



#112 - 2006 P&J Gooseneck (DR1441)

2006 P&J Gooseneck (DR1441), 24' gooseneck trailer, 5' rear beaver trailer, fold down ramps, tandem dual wheeled axles, front storage box, 245/75R16 tires. Notes: Part of an estate. Item Location: Oakland, NE 68045 Equipment Sold "AS IS, WHERE IS": All equipment/property is sold "AS IS, WHERE IS" with no warranty or guarantees, expressed or implied, No operational assessments have been made by DPA Auctions on this item, it has been photographed ONLY



#113 - Knapheide Truck Platform (NP8015)

Knapheide Truck Platform (NP8015), approx. 135" length x 96" wide, treadplate floor, 5th wheel ball, lights, stake sides. Notes: Bed only, truck DOES NOT SELL. DMI Cush'n Combo Hitch DO NOT SELL with this lot. Item Location: Seneca, KS 66538 Equipment Sold "AS IS, WHERE IS": All equipment/property is sold "AS IS, WHERE IS" with no warranty or guarantees, expressed or implied, No operational assessments have been made by DPA Auctions on this item, it has been photographed ONLY



#114 - Liquid Nurse Trailer (PZ1004)

Liquid Nurse Trailer (PZ1004), 1000 gallon stainless steel liquid nurse tank, gas engine, pump, tandem axle. Notes: Item Location: Lacona, IA 50139 Equipment Sold "AS IS, WHERE IS": All equipment/property is sold "AS IS, WHERE IS" with no warranty or guarantees, expressed or implied, No operational assessments have been made by DPA Auctions on this item, it has been photographed ONLY



#115 - 1993 Felling Sprayer Trailer (CP1002)

1993 Felling Sprayer Trailer (CP1002), 1993 Felling tandem axle sprayer trailer, fold down ramps. Notes: Item Location: Lacona, IA 50139 Equipment Sold "AS IS, WHERE IS": All equipment/property is sold "AS IS, WHERE IS" with no warranty or guarantees, expressed or implied, No operational assessments have been made by DPA Auctions on this item, it has been photographed ONLY



#116 - 1987 Ford L8000 Liquid Nurse Truck (CP1005)

1987 Ford L8000 Liquid Nurse Truck (CP1005), diesel engine, 5 speed transmission, 2 speed rear end, heat, Am/Fm cassette radio, single axle, 1600 gallon stainless steel liquid nurse tank, 2 poly chemical inductors, Honda GX160 5.5 hp gas engine, pump, shows 203,957 miles. Notes: Item Location: Lacona, IA 50139 Equipment Sold "AS IS, WHERE IS": All equipment/property is sold "AS IS, WHERE IS" with no warranty or guarantees, expressed or implied, No operational assessments have been made by DPA Auctions on this item, it has been photographed ONLY



#117 - 2001 Chevrolet Astro Van (CP1001)

2001 Chevrolet Astro Van (CP1001), gas engine, automatic transmission, air conditioning, heat, Am/Fm radio, cruise control. Notes: Item Location: Lacona, IA 50139 Equipment Sold "AS IS, WHERE IS": All equipment/property is sold "AS IS, WHERE IS" with no warranty or guarantees, expressed or implied, No operational assessments have been made by DPA Auctions on this item, it has been photographed ONLY



#118 - Tyler Dry Spreader CP1014)

Tyler Dry Spreader CP1014), Tyler stainless steel dry spreader, single spinner, PTO, flotation tires. Notes: Item Location: Columbia, IA 50057 Equipment Sold "AS IS, WHERE IS": All equipment/property is sold "AS IS, WHERE IS" with no warranty or guarantees, expressed or implied, No operational assessments have been made by DPA Auctions on this item, it has been photographed ONLY



#119 - CaseIH Toolbar (NP8102)

CaseIH Toolbar (NP8102), pull type, 21 knife, hydraulic wings, walking tandems, flotation tires, Raven super cooler. Notes: No cracks or welds on this bar. Item Location: Marthasville, MO 63357 Equipment Sold "AS IS, WHERE IS": All equipment/property is sold "AS IS, WHERE IS" with no warranty or guarantees, expressed or implied, No operational assessments have been made by DPA Auctions on this item, it has been photographed ONLY



#120 - 1992 John Deere 455 Drill (NP8090)

1992 John Deere 455 Drill (NP8090), 25' width, 7.5" spacing, hydraulic fold, 11L-15 transport tires, John Deere controller (raise, left section/right section, power). Notes: Item Location: Hughesville, MO 65334 Equipment Sold "AS IS, WHERE IS": All equipment/property is sold "AS IS, WHERE IS" with no warranty or guarantees, expressed or implied, No operational assessments have been made by DPA Auctions on this item, it has been photographed ONLY



#121 - 1999 Bobcat 753 Skid Steer (AL640)

1999 Bobcat 753 Skid Steer (AL640), showing 43 horse four cylinder diesel auxiliary hydraulics, 60" bucket, 265 70 16.5 tires, shows 2645 hours. Notes: Item Location: Aplington, IA 50604 Equipment Sold "AS IS, WHERE IS": All equipment/property is sold "AS IS, WHERE IS" with no warranty or guarantees, expressed or implied, No operational assessments have been made by DPA Auctions on this item, it has been photographed ONLY



#122 - New Leader L4258 G4 Dry Spreader Box (PZ1392)

New Leader L4258 G4 Dry Spreader Box (PZ1392), New Leader L4258 G4 - 11 dry spreader box (S/N 133808), twin spinner, all hydraulic, Multiplier - 5 insert. Notes: Running gear NOT included. Item Location: Winthrop, IA 50682 Equipment Sold "AS IS, WHERE IS": All equipment/property is sold "AS IS, WHERE IS" with no warranty or guarantees, expressed or implied, No operational assessments have been made by DPA Auctions on this item, it has been photographed ONLY



#123 - 2013 Chevy Silverado LTZ Pickup (DR1442)

2013 Chevy Silverado LTZ Pickup (DR1442), gas engine, automatic transmission, crew cab, 4X4, Z71 package, chrome nerf bar running boards, AM/FM CD radio, power drivers seat, power locks & windows, rear receiver hitch, sliding rear window, sun roof, 265/65R18 tires, shows 154,606 miles. Notes: Tonneau cover needs replaced. Less than 10,000 miles on tires. Item Location: Fremont, NE 68025 Equipment Sold "AS IS, WHERE IS": All equipment/property is sold "AS IS, WHERE IS" with no warranty or guarantees, expressed or implied, No operational assessments have been made by DPA Auctions on this item, it has been photographed ONLY



#124 - Mitas Flotation Tires (PZ1401)

Mitas Flotation Tires (PZ1401), 4 - Mitas RD-03 650/65R38 flotation tires & rims. Notes: Item Location: Hopkinton, IA 52237 Equipment Sold "AS IS, WHERE IS": All equipment/property is sold "AS IS, WHERE IS" with no warranty or guarantees, expressed or implied, No operational assessments have been made by DPA Auctions on this item, it has been photographed ONLY



#125 - 2001 RoGator 854 Sprayer (LD119)

2001 RoGator 854 Sprayer (LD119), Cummins diesel engine, Hydrostatic transmission, heat and AC, AM/FM radio, Air Max 170 (S/N: AM-109), electric roll tarp, 55' booms, AgLeader GPS system, 14.9x46 tires, shows 2497 hours. Notes: Item Location: Dodgeville, WI 53533 Equipment Sold "AS IS, WHERE IS": All equipment/property is sold "AS IS, WHERE IS" with no warranty or guarantees, expressed or implied, No operational assessments have been made by DPA Auctions on this item, it has been photographed ONLY



#126 - 2014 Gregoire Besson 9 Bottom Plow (PD1302)

2014 Gregoire Besson 9 Bottom Plow (PD1302), 7+1+1 on-land/in-furrow rollover plow, well maintained. Notes: Coulters available upon request for an additional charge! Item Location: Saginaw, MI 48601 Equipment Sold "AS IS, WHERE IS": All equipment/property is sold "AS IS, WHERE IS" with no warranty or guarantees, expressed or implied, No operational assessments have been made by DPA Auctions on this item, it has been photographed ONLY



#127 - 2002 Gregoire Besson 10 Bottom Plow (PD1303)

2002 Gregoire Besson 10 Bottom Plow (PD1303), 8+1+1 on-land/in-furrow rollover plow, well maintained. Notes: Coulters available upon request for an additional charge! Item Location: Saginaw, MI 48601 Equipment Sold "AS IS, WHERE IS": All equipment/property is sold "AS IS, WHERE IS" with no warranty or guarantees, expressed or implied, No operational assessments have been made by DPA Auctions on this item, it has been photographed ONLY



#128 - Continental Flotation Tires (PZ1393)

Continental Flotation Tires (PZ1393), 4 - Continental contract AC65 710/70R38 flotation tires and rims. Notes: Item Location: Independence, IA 50644 Equipment Sold "AS IS, WHERE IS": All equipment/property is sold "AS IS, WHERE IS" with no warranty or guarantees, expressed or implied, No operational assessments have been made by DPA Auctions on this item, it has been photographed ONLY



#129 - Remlinger 32' Harrow (TH444)

Remlinger 32' Harrow (TH444), 3 bar spike tooth harrow, fits a case IH 32' 496 Disk. Notes: Case IH 496 Disk is NOT included. Item Location: Ewing, IL 62836 Equipment Sold "AS IS, WHERE IS": All equipment/property is sold "AS IS, WHERE IS" with no warranty or guarantees, expressed or implied, No operational assessments have been made by DPA Auctions on this item, it has been photographed ONLY



#130 - 1000 Gallon Water Trailer (TH446)

1000 Gallon Water Trailer (TH446), 1000 gallon water trailer, includes Briggs 2 inch pump. Notes: NO TITLE. Item Location: Ewing, IL 62836 Equipment Sold "AS IS, WHERE IS": All equipment/property is sold "AS IS, WHERE IS" with no warranty or guarantees, expressed or implied, No operational assessments have been made by DPA Auctions on this item, it has been photographed ONLY



#131 - Rear Hitch For Case IH 32' Disk (TH445)

Rear Hitch For Case IH 32' Disk (TH445), rear hitch for Case IH 32' disk, plumbing is included. Notes: Item Location: Ewing, IL 62836 Equipment Sold "AS IS, WHERE IS": All equipment/property is sold "AS IS, WHERE IS" with no warranty or guarantees, expressed or implied, No operational assessments have been made by DPA Auctions on this item, it has been photographed ONLY



#132 - 2003 John Deere 1690 Soybean Special Air Seeder (NP8089)

2003 John Deere 1690 Soybean Special Air Seeder (NP8089), 15" spacing, approx. 50 bushel tank, CCS SeedMetering, hydraulic wings, Haukaas Sidearm markers, water gauge, 280/70R15 transport tires, AG EXPRESS Electronics SFA32 monitor, John Deere CCS rate and clutch controller. Notes: Item Location: Hughesville, MO 65334 Equipment Sold "AS IS, WHERE IS": All equipment/property is sold "AS IS, WHERE IS" with no warranty or guarantees, expressed or implied, No operational assessments have been made by DPA Auctions on this item, it has been photographed ONLY



#133 - 2012 Kinze 3600 16/31 ASD Planter (DL492)

2012 Kinze 3600 16/31 ASD Planter (DL492), Vset corn meters, Kinze brush bean meters, dual Rawson hydraulic drives, Ag Leader electric clutches on all 31 rows, Kinze Digi Star scales, Martin pin adjust row cleaners on rear unites, Yetter cast spike closure wheels, pneumatic air bag down pressure, 3 weigh pins on rear units to measure down pressure, all controlled w/ precision planting 20/20 Gen 2 Monitor included. Notes: Item Location: Keytesville, MO 65261 Equipment Sold "AS IS, WHERE IS": All equipment/property is sold "AS IS, WHERE IS" with no warranty or guarantees, expressed or implied, No operational assessments have been made by DPA Auctions on this item, it has been photographed ONLY



#134 - 2013 Ford Escape SLE (DR1457)

2013 Ford Escape SLE (DR1457), gas engine, automatic transmission AWD, sun roof, leather interior, cruise control, AM/FM radio, power windows & locks, 235/50R18 tires, shows 89,836 miles. Notes: Less than 10,000 miles on tires. Item Location: Fremont, NE 68025 Equipment Sold "AS IS, WHERE IS": All equipment/property is sold "AS IS, WHERE IS" with no warranty or guarantees, expressed or implied, No operational assessments have been made by DPA Auctions on this item, it has been photographed ONLY



#135 - 2006 John Deere 8230-T Tractor (TH448)

2006 John Deere 8230-T Tractor (TH448), 18 speed power shifts, 4 SCV, New Weather-band radio with remote & blue tooth, dual radar, Stein Bauer performance module, 284 hp, 3 point quick hitch, front weight bracket, Heavy Drawbar, Lg 1000 PTO, rear HID lighting, 4 rear view mirrors, buddy seat, Newer Solid Deal 18 in. tracks & exhaust, shows 5698 hours. Notes: Great Shape! Very snappy and dependable planter & cart tractor. Track guide lugs are scuffed slightly and there is a crack in the hood on the left side. Item Location: Britt, IA 50423 Equipment Sold "AS IS, WHERE IS": All equipment/property is sold "AS IS, WHERE IS" with no warranty or guarantees, expressed or implied, No operational assessments have been made by DPA Auctions on this item, it has been photographed ONLY



#137 - DMI 4300 Tool Bar (CP1021, Unit 532)

DMI 4300 Tool Bar (CP1021, Unit 532), DMI 4300 15 knife pull type tool bar, coulters, double disc sealers, GDI 200 ground driven pump, hydraulic wings, walking tandems, flotation tires, rear hitch. Notes: Item Location: Waterloo, IL 62298 Equipment Sold "AS IS, WHERE IS": All equipment/property is sold "AS IS, WHERE IS" with no warranty or guarantees, expressed or implied, No operational assessments have been made by DPA Auctions on this item, it has been photographed ONLY



#138 - Willmar Dry Spreader (CP1022, Unit 419)

Willmar Dry Spreader (CP1022, Unit 419), Willmar 8 ton dry spreader, twin spinner, PTO, tarp, 19L-16.1 flotation tires. Notes: Item Location: Waterloo, IL 62298 Equipment Sold "AS IS, WHERE IS": All equipment/property is sold "AS IS, WHERE IS" with no warranty or guarantees, expressed or implied, No operational assessments have been made by DPA Auctions on this item, it has been photographed ONLY



#139 - Brock Bulk Seed Tank (CP1020)

Brock Bulk Seed Tank (CP1020), Brock bulk cone bottom seed tank, 12' diameter, 6 ring, 2000 bushel capacity, stands, ladder, Bristle auger, 5 hp 3 phase electric motor, Sukup fan. Notes: This Bin must be removed by April 19th, 2019 with NO exceptions. Dismantle, removal and transportation is at the expense, risk and liability of the buyer. Item Location: Waterloo, IL 62298 Equipment Sold "AS IS, WHERE IS": All equipment/property is sold "AS IS, WHERE IS" with no warranty or guarantees, expressed or implied, No operational assessments have been made by DPA Auctions on this item, it has been photographed ONLY



#140 - Brock Bulk Seed Tank (CP1023, Unit 1)

Brock Bulk Seed Tank (CP1023, Unit 1), Brock bulk cone bottom seed tank, 12' diameter, 6 ring, 2000 bushel capacity, stands, ladder, Bristle auger, 5 hp 3 phase electric motor, Sukup fan. Notes: This Bin must be removed by April 19th, 2019 with NO exceptions. Dismantle, removal and transportation is at the expense, risk and liability of the buyer. Item Location: Waterloo, IL 62298 Equipment Sold "AS IS, WHERE IS": All equipment/property is sold "AS IS, WHERE IS" with no warranty or guarantees, expressed or implied, No operational assessments have been made by DPA Auctions on this item, it has been photographed ONLY



#141 - 1993 IHC Dry Tender Truck (CP1026, Unit 131)

1993 IHC Dry Tender Truck (CP1026, Unit 131), diesel engine, 10 speed transmission, air conditioning, heat, Am/Fm radio, cruise control, tandem axle, full screw, Willmar 16 ton dry tender box, side discharge auger, all hydraulic, roll over tarp, 11R22.5 tires, shows 580,021 miles. Notes: Item Location: Waterloo, IL 62298 Equipment Sold "AS IS, WHERE IS": All equipment/property is sold "AS IS, WHERE IS" with no warranty or guarantees, expressed or implied, No operational assessments have been made by DPA Auctions on this item, it has been photographed ONLY



#142 - Willmar Dry Spreader (CP1028, Unit 807)

Willmar Dry Spreader (CP1028, Unit 807), Willmar 8 ton dry spreader, twin spinner, PTO, 19L-16.1 flotation tires. Notes: Item Location: Red Bud, IL 62278 Equipment Sold "AS IS, WHERE IS": All equipment/property is sold "AS IS, WHERE IS" with no warranty or guarantees, expressed or implied, No operational assessments have been made by DPA Auctions on this item, it has been photographed ONLY



#143 - Cat V50B Forklift (CP1033, Unit 98)

Cat V50B Forklift (CP1033, Unit 98), LP gas engine, shuttle shift transmission, dual front tires, side shift, canopy, lights, shows 4460 hours. Notes: Item Location: Red Bud, IL 62278 Equipment Sold "AS IS, WHERE IS": All equipment/property is sold "AS IS, WHERE IS" with no warranty or guarantees, expressed or implied, No operational assessments have been made by DPA Auctions on this item, it has been photographed ONLY



#144 - 1998 Freightliner Century Class Truck (CP1030, Unit 138)

1998 Freightliner Century Class Truck (CP1030, Unit 138), M11 Plus Cummins diesel engine, 10 speed transmission, air conditioning, heat, Am/Fm cassette radio, cruise control, engine brake, tandem axle, full screw, air ride suspension, 295/75R22.5 tires. Notes: Item Location: Red Bud, IL 62278 Equipment Sold "AS IS, WHERE IS": All equipment/property is sold "AS IS, WHERE IS" with no warranty or guarantees, expressed or implied, No operational assessments have been made by DPA Auctions on this item, it has been photographed ONLY



#145 - 1997 Ford Louisville LP Truck (CP1036, Unit 75)

1997 Ford Louisville LP Truck (CP1036, Unit 75), diesel engine, 10 speed transmission, air conditioning heat, Am/Fm radio, single axle, 1989 Trans-Western Enterprises 2,800 gallon LP tank, Nat'l Board #1904, S/N A-2328, LC meter, electric hose reel with hose, 11R22.5 tires, shows 220,024 miles. Notes: Item Location: Red Bud, IL 62278 Equipment Sold "AS IS, WHERE IS": All equipment/property is sold "AS IS, WHERE IS" with no warranty or guarantees, expressed or implied, No operational assessments have been made by DPA Auctions on this item, it has been photographed ONLY



#146 - CRP Seed Mix (CP1015)

CRP Seed Mix (CP1015), 2 - Pallets of CRP Mix, Consisting of 1970.66 Bulk lbs of: Big Bluestem, June Grass, Switchgrass, Indiangrass, Rough Dropseed, Canada Milk Vetch, Partridge Pea, Purple Prairie Clover, Wild Bergamot, Foxglove Beardtongue, Prairie Cinquefoil, Yellow Coneflower, Black-eyed Susan, Please see PDF of Mix % - Mix Purity - Species Purity - Germ - Hard or Dromant - TZ - Total Viable - PLS. Notes: Item Location: Humeston, IA 50123 Equipment Sold "AS IS, WHERE IS": All equipment/property is sold "AS IS, WHERE IS" with no warranty or guarantees, expressed or implied, No operational assessments have been made by DPA Auctions on this item, it has been photographed ONLY



#147 - 2014 John Deere 4940 (DR1431 Unit 39817)

2014 John Deere 4940 (DR1431 Unit 39817), John Deere diesel engine, hydrostatic drive, 1200 gallon stainless steel liquid system, 120' boom, 20" spacing's, foam markers, 5 way nozzle bodies, stainless steel chemical inductor, Green Star 3000 reciever, Green Star 3 controller, 380/105R50 row crop tires, shows 2026 hours. Notes: Item Location: Fairmont, MN 56031 Equipment Sold "AS IS, WHERE IS": All equipment/property is sold "AS IS, WHERE IS" with no warranty or guarantees, expressed or implied, No operational assessments have been made by DPA Auctions on this item, it has been photographed ONLY



#148 - Knapheide Truck Platform (NP8014)

Knapheide Truck Platform (NP8014), Model PVMXT-113C, approx. 135" length x 96" wide, treadplate floor, 5th wheel ball, lights, stake sides. Notes: Bed only, truck DOES NOT SELL. DMI Cush'n Combo Hitch DOES NOT SELL with this lot. Item Location: Seneca, KS 66538 Equipment Sold "AS IS, WHERE IS": All equipment/property is sold "AS IS, WHERE IS" with no warranty or guarantees, expressed or implied, No operational assessments have been made by DPA Auctions on this item, it has been photographed ONLY



#149 - 2 Schaben 3000 Gallon Portable Storage Tanks (PD1266)

2 Schaben 3000 Gallon Portable Storage Tanks (PD1266), portable storage tanks holds 6000 gallons total, 3 inch plumbing. Notes: Item Location: Victoria, IL 61485 Equipment Sold "AS IS, WHERE IS": All equipment/property is sold "AS IS, WHERE IS" with no warranty or guarantees, expressed or implied, No operational assessments have been made by DPA Auctions on this item, it has been photographed ONLY



#150 - 7 11R- 24.5 Tires On Rims (TH442)

7 11R- 24.5 Tires On Rims (TH442), lot of 7 11R- 24.5 tires on rims. Notes: Item Location: Clatonia, NE 68328 Equipment Sold "AS IS, WHERE IS": All equipment/property is sold "AS IS, WHERE IS" with no warranty or guarantees, expressed or implied, No operational assessments have been made by DPA Auctions on this item, it has been photographed ONLY



#151 - 1982 8 Tower Valley Pivot (TH441)

1982 8 Tower Valley Pivot (TH441), model 4865, 11- 24.5 tires, 16,840.5 hours, unit was on a full quarter, does not have the endgun on unit, pivot has some minor patch work, pivot panel included. Notes: Item Location: Clatonia, NE 68328 Equipment Sold "AS IS, WHERE IS": All equipment/property is sold "AS IS, WHERE IS" with no warranty or guarantees, expressed or implied, No operational assessments have been made by DPA Auctions on this item, it has been photographed ONLY



#152 - 2007 Kenworth W900 (DR1459 Unit 317)

2007 Kenworth W900 (DR1459 Unit 317), Cat C-15 diesel engine, 13 speed transmission, day cab, air ride suspension, engine brake, dual chrome stacks, dual chrome air cleaners, chrome Texas front bumper, 5th wheel plate, 220" wheel base, cruise control, 22.5 tires, all aluminum wheels, shows 953,023 miles. Notes: Full service are available upon request. Item Location: Marengo, IL 60152 Equipment Sold "AS IS, WHERE IS": All equipment/property is sold "AS IS, WHERE IS" with no warranty or guarantees, expressed or implied, No operational assessments have been made by DPA Auctions on this item, it has been photographed ONLY



#154 - 2014 John Deere 2623VT Vertical Tillage (NP8091)

2014 John Deere 2623VT Vertical Tillage (NP8091), 26' 5", Soil Management System, hydraulic wings, 22" smooth front discs, 22" rear ribbed discs, rear rolling baskets, walking tandems, 12.5-15 tires. Notes: Used VERY LITTLE. Item Location: Hughesville, MO 65334 Equipment Sold "AS IS, WHERE IS": All equipment/property is sold "AS IS, WHERE IS" with no warranty or guarantees, expressed or implied, No operational assessments have been made by DPA Auctions on this item, it has been photographed ONLY



#155 - DMI 5250 Nutri-Placer Toolbar (NP8101)

DMI 5250 Nutri-Placer Toolbar (NP8101), pull type, 19 knife, hydraulic wings, walking tandems, flotation tires, DICKEY-john tower, (2) DICKEY-john controllers (1 - DjCCS100 & 1 - DjCMS100) Notes: Field ready, all NEW hoses, no welds or cracks anywhere. Item Location: Marthasville, MO 63357 Equipment Sold "AS IS, WHERE IS": All equipment/property is sold "AS IS, WHERE IS" with no warranty or guarantees, expressed or implied, No operational assessments have been made by DPA Auctions on this item, it has been photographed ONLY



#156 - Kenworth W900 Hood (NP8113)

Kenworth W900 Hood (NP8113), for curved glass, one small spot missing as shown, easily fixable. Notes: Seller has forklift on site and will assist with loading. Item Location: Coal Valley, IL 61240 Equipment Sold "AS IS, WHERE IS": All equipment/property is sold "AS IS, WHERE IS" with no warranty or guarantees, expressed or implied, No operational assessments have been made by DPA Auctions on this item, it has been photographed ONLY



#157 - (2) Kenworth Aero Cab Sleepers (NP8114)

(2) Kenworth Aero Cab Sleepers (NP8114), 72" sleepers, excellent condition, interiors partially removed, both have the much-wanted side windows in the doors. Notes: Seller has forklift on site and will assist with loading. Item Location: Coal Valley, IL 61240 Equipment Sold "AS IS, WHERE IS": All equipment/property is sold "AS IS, WHERE IS" with no warranty or guarantees, expressed or implied, No operational assessments have been made by DPA Auctions on this item, it has been photographed ONLY



#158 - (2) RC Custom Made Side Boxes (NP8115)

(2) RC Custom Made Side Boxes (NP8115), excellent condition. Notes: Item Location: Coal Valley, IL 61240 Equipment Sold "AS IS, WHERE IS": All equipment/property is sold "AS IS, WHERE IS" with no warranty or guarantees, expressed or implied, No operational assessments have been made by DPA Auctions on this item, it has been photographed ONLY



#160 - Huskee 35 Ton Log Splitter (PD1268)

Huskee 35 Ton Log Splitter (PD1268), 12.5 HP Briggs and Stratton engine, auto return. Notes: Item Location: Blencoe, IA 51523 Equipment Sold "AS IS, WHERE IS": All equipment/property is sold "AS IS, WHERE IS" with no warranty or guarantees, expressed or implied, No operational assessments have been made by DPA Auctions on this item, it has been photographed ONLY



#161 - 2012 Case Puma 170 W/ L770 Loader & Grapple (PD1263)

2012 Case Puma 170 W/ L770 Loader & Grapple (PD1263), 6.7L engine, 18 speed powershift transmission, left hand reverser, 480/80R42 Rear tires w/ wheel weights of 550 pounds, 80%, 380/85R30 front tires (new) with fenders, L770 loader with 8 foot 6 inch Quick Tach grapple bucket with 5 tine grapple fork, single point hookup for hydraulics, and electric 3 function Joystick for loader, 3 SCV's, front weights-10@100 pounds each, foot throttle, 3 pt. hitch with top link, 540 & 1000(1 3/8") PTO, 3 point hitch & PTO controls on rear fenders, sunroof, shows 2350 hours. Notes: Oil changed every 100 hours. This tractor will be cleaned up before it leaves the seller! Item Location: Wolsey, SD 57384 Equipment Sold "AS IS, WHERE IS": All equipment/property is sold "AS IS, WHERE IS" with no warranty or guarantees, expressed or implied, No operational assessments have been made by DPA Auctions on this item, it has been photographed ONLY



#162 - 1986 Ag-Gator 2004 (TH439)

1986 Ag-Gator 2004 (TH439), Cummins V504C 195HP engine, 10 speed transmission, A/C, Heat, dry spreader box, 67x 34-25 tires, shows 1184 hours. Notes: Item Location: Conover, OH 45317 Equipment Sold "AS IS, WHERE IS": All equipment/property is sold "AS IS, WHERE IS" with no warranty or guarantees, expressed or implied, No operational assessments have been made by DPA Auctions on this item, it has been photographed ONLY



#163 - (4) 650/65R38 Tires (TH440)

(4) 650/65R38 Tires (TH440), lot of (3) Michelin 650/65R38 tires, (1) Continental 650/65R38 tire, tires came off of a Case 4420 sprayer. Notes: Item Location: Conover, OH 45317 Equipment Sold "AS IS, WHERE IS": All equipment/property is sold "AS IS, WHERE IS" with no warranty or guarantees, expressed or implied, No operational assessments have been made by DPA Auctions on this item, it has been photographed ONLY



#164 - 2002 Loral 4000SS (AL557)

2002 Loral 4000SS (AL557), Airmax 2000 box with 70' booms, Falcon controller, foamer, Cummins ISM 400HP engine, Allison automatic transmission, 48-31.00-20 fronts, 1000/50R25 rears, shows 4663 hours, shows 31,254 miles. Notes: Field ready, and variable rate ready. Item Location: Gayville, SD 57031 Equipment Sold "AS IS, WHERE IS": All equipment/property is sold "AS IS, WHERE IS" with no warranty or guarantees, expressed or implied, No operational assessments have been made by DPA Auctions on this item, it has been photographed ONLY



#165 - Trust Kits & Belt Guards (CP1037)

Trust Kits & Belt Guards (CP1037), Trust kit, heater (not working), belt guards & motor mounts. Notes: Item Location: Red Bud, IL 62278 Equipment Sold "AS IS, WHERE IS": All equipment/property is sold "AS IS, WHERE IS" with no warranty or guarantees, expressed or implied, No operational assessments have been made by DPA Auctions on this item, it has been photographed ONLY



#166 - Willmar Dry Spreader (CP1024, Unit 814)

Willmar Dry Spreader (CP1024, Unit 814), Willmar 8 ton dry spreader, twin spinner, PTO, tarp, 19L-16.1SL flotation tires. Notes: Item Location: Fults, IL 62245 Equipment Sold "AS IS, WHERE IS": All equipment/property is sold "AS IS, WHERE IS" with no warranty or guarantees, expressed or implied, No operational assessments have been made by DPA Auctions on this item, it has been photographed ONLY



#167 - Jaham Grain Probe (CP1039)

Jaham Grain Probe (CP1039), Jaham JT20 grain probe, complete probe: boom, probe, cylinder, hydraulic motor. Notes: Item Location: Evansville, IL 62242 Equipment Sold "AS IS, WHERE IS": All equipment/property is sold "AS IS, WHERE IS" with no warranty or guarantees, expressed or implied, No operational assessments have been made by DPA Auctions on this item, it has been photographed ONLY



#168 - Lincoln Motor (CP1038)

Lincoln Motor (CP1038), Lincoln 100 hp electric motor. Notes: Runs but needs bearings. Item Location: Evansville, IL 62242 Equipment Sold "AS IS, WHERE IS": All equipment/property is sold "AS IS, WHERE IS" with no warranty or guarantees, expressed or implied, No operational assessments have been made by DPA Auctions on this item, it has been photographed ONLY



#169 - Willmar Dry Spreader (CP1040, Unit 455)

Willmar Dry Spreader (CP1040, Unit 455), Willmar Super 800 dry spreader, twin spinner, PTO, tarp, 19L-16.1 flotation tires. Notes: Item Location: Percy, IL 62272 Equipment Sold "AS IS, WHERE IS": All equipment/property is sold "AS IS, WHERE IS" with no warranty or guarantees, expressed or implied, No operational assessments have been made by DPA Auctions on this item, it has been photographed ONLY



#170 - Speed King Seed Conveyor (CP1041)

Speed King Seed Conveyor (CP1041), Speed King seed 10" x 65' conveyor, 15 hp 3 phase electric motor, winch, flotation tires. Notes: Item Location: Sparta, IL 62286 Equipment Sold "AS IS, WHERE IS": All equipment/property is sold "AS IS, WHERE IS" with no warranty or guarantees, expressed or implied, No operational assessments have been made by DPA Auctions on this item, it has been photographed ONLY



#171 - USC LP800 Seed Treater System (CP1042, Unit 1005)

USC LP800 Seed Treater System (CP1042, Unit 1005), USC LP800 Seed treater, KSI model 1208-17 conveyor, KSI model 1208-27 conveyor, USC hopper, control panel, atomizer, mix tank, 2006 Boss gooseneck tandem axle trailer. Notes: Item Location: Sparta, IL 62286 Equipment Sold "AS IS, WHERE IS": All equipment/property is sold "AS IS, WHERE IS" with no warranty or guarantees, expressed or implied, No operational assessments have been made by DPA Auctions on this item, it has been photographed ONLY



#172 - Willmar Dry Spreader (CP1043, Unit 18)

Willmar Dry Spreader (CP1043, Unit 18), Willmar Super 600 dry spreader, twin spinner, PTO, tarp, 16.5L-16.1SL flotation tires. Notes: Item Location: Oakdale, IL 62268 Equipment Sold "AS IS, WHERE IS": All equipment/property is sold "AS IS, WHERE IS" with no warranty or guarantees, expressed or implied, No operational assessments have been made by DPA Auctions on this item, it has been photographed ONLY



#173 - 2011 Cat 252B3 Skid Steer (CP1053, Unit 2004)

2011 Cat 252B3 Skid Steer (CP1053, Unit 2004), diesel engine, hydrostatic transmission, canopy, door, lights, bucket, shows 1263 hours. Notes: Item Location: Nashville, IL 62263 Equipment Sold "AS IS, WHERE IS": All equipment/property is sold "AS IS, WHERE IS" with no warranty or guarantees, expressed or implied, No operational assessments have been made by DPA Auctions on this item, it has been photographed ONLY



#174 - 2003 IHC 4400 Truck (CP1027, Unit 3061)

2003 IHC 4400 Truck (CP1027, Unit 3061), DT530 diesel engine, 10 speed transmission, air conditioning, heat, Am/Fm radio, tandem axle, full screw, 11R22.5 tires, shows 311,949 miles. Notes: Please allow at least 30 days for title transfer. Item Location: Red Bud, IL 62278 Equipment Sold "AS IS, WHERE IS": All equipment/property is sold "AS IS, WHERE IS" with no warranty or guarantees, expressed or implied, No operational assessments have been made by DPA Auctions on this item, it has been photographed ONLY



#176 - Tyler 16 Ton 4 Bin Tender Box (AL629)

Tyler 16 Ton 4 Bin Tender Box (AL629), new belly auger November of 2018, no tarp, box works as it should, trailer is not included. Notes: Trailer is not included with this Tender Box. Item Location: Gayville, SD 57031 Equipment Sold "AS IS, WHERE IS": All equipment/property is sold "AS IS, WHERE IS" with no warranty or guarantees, expressed or implied, No operational assessments have been made by DPA Auctions on this item, it has been photographed ONLY



#177 - Tyler 16 Ton Tender Box (AL630)

Tyler 16 Ton Tender Box (AL630), 4 compartment, no tarp, pump included, box works as it should be, trailer is NOT included. Notes: Trailer is NOT included. Item Location: Gayville, SD 57031 Equipment Sold "AS IS, WHERE IS": All equipment/property is sold "AS IS, WHERE IS" with no warranty or guarantees, expressed or implied, No operational assessments have been made by DPA Auctions on this item, it has been photographed ONLY



#178 - 2000 Dodge Ram 3500 (DR1438)

2000 Dodge Ram 3500 (DR1438), Cummins diesel engine, 5 speed transmission, Stahl 6 door steel service box, (both rear doors need hinges), rear receiver hitch, AM/FM cassette radio, cruise control, 235/85R16 tires, shows 252,876 miles. Notes: This is a heavy frame truck, military specs. Item Location: Oakland, NE 68045 Equipment Sold "AS IS, WHERE IS": All equipment/property is sold "AS IS, WHERE IS" with no warranty or guarantees, expressed or implied, No operational assessments have been made by DPA Auctions on this item, it has been photographed ONLY



#179 - NH3 Tank (NP8078, Tank 86)

NH3 Tank (NP8078, Tank 86), 1,000 gallon capacity, top front fill, water tank, 4 wheel gear, 9.5L-15 tires, data plate. Notes: Item Location: Independence, KS 67301 Equipment Sold "AS IS, WHERE IS": All equipment/property is sold "AS IS, WHERE IS" with no warranty or guarantees, expressed or implied, No operational assessments have been made by DPA Auctions on this item, it has been photographed ONLY



#180 - NH3 Tank (NP8082, Tank X)

NH3 Tank (NP8082, Tank X), 1,000 gallon capacity, top front fill, water tank, 4 wheel gear, 11L-15 tires, data plate. Notes: Item Location: Independence, KS 67301 Equipment Sold "AS IS, WHERE IS": All equipment/property is sold "AS IS, WHERE IS" with no warranty or guarantees, expressed or implied, No operational assessments have been made by DPA Auctions on this item, it has been photographed ONLY



#181 - NH3 Tank (NP8083, Tank Z)

NH3 Tank (NP8083, Tank Z), 1,000 gallon capacity, top front fill, water tank, 4 wheel gear, 11L-15 tires, data plate. Notes: Item Location: Independence, KS 67301 Equipment Sold "AS IS, WHERE IS": All equipment/property is sold "AS IS, WHERE IS" with no warranty or guarantees, expressed or implied, No operational assessments have been made by DPA Auctions on this item, it has been photographed ONLY



#182 - (16) NH3 Shanks (NP8079)

(16) NH3 Shanks (NP8079), for field cultivator. Notes: Item Location: Independence, KS 67301 Equipment Sold "AS IS, WHERE IS": All equipment/property is sold "AS IS, WHERE IS" with no warranty or guarantees, expressed or implied, No operational assessments have been made by DPA Auctions on this item, it has been photographed ONLY



#183 - (16) Shield Ag Acra Plant NH3 Points (NP8080)

(16) Shield Ag Acra Plant NH3 Points (NP8080), for DMI field cultivator. Notes: Item Location: Independence, KS 67301 Equipment Sold "AS IS, WHERE IS": All equipment/property is sold "AS IS, WHERE IS" with no warranty or guarantees, expressed or implied, No operational assessments have been made by DPA Auctions on this item, it has been photographed ONLY



#184 - Raven AccuFlow (NP8081)

Raven AccuFlow (NP8081), 30 gallon system, Raven flow meter, Raven control valve, Raven shut off valve, Raven 440 controller w/ sky trak GPS speed sensor. Notes: Item Location: Independence, KS 67301 Equipment Sold "AS IS, WHERE IS": All equipment/property is sold "AS IS, WHERE IS" with no warranty or guarantees, expressed or implied, No operational assessments have been made by DPA Auctions on this item, it has been photographed ONLY



#185 - Tyler Dry Tender Box (NP8084)

Tyler Dry Tender Box (NP8084), 2 compartment, approx. 18 ton capacity, side discharge auger, roll tarp, hydraulic pump. Notes: Item Location: Clinton, IA 52732 Equipment Sold "AS IS, WHERE IS": All equipment/property is sold "AS IS, WHERE IS" with no warranty or guarantees, expressed or implied, No operational assessments have been made by DPA Auctions on this item, it has been photographed ONLY



#186 - (2) Bennett 9036 Fuel Station Pump Dispensers (NP8086)

(2) Bennett 9036 Fuel Station Pump Dispensers (NP8086), (1) has hoses, (1) does not, includes (3) submersible pumps, piping and misc. fittings. Notes: Item Location: Clinton, IA 52732 Equipment Sold "AS IS, WHERE IS": All equipment/property is sold "AS IS, WHERE IS" with no warranty or guarantees, expressed or implied, No operational assessments have been made by DPA Auctions on this item, it has been photographed ONLY



#187 - (4) Good Year Flotation Tires/Rims (NP8087)

(4) Good Year Flotation Tires/Rims (NP8087), Optitrac DT812, size 620/70R46, 10 bolt rim pattern, used less than 300 hours. Notes: Came off Hagie STS12 Sprayer. Item Location: Clinton, IA 52732 Equipment Sold "AS IS, WHERE IS": All equipment/property is sold "AS IS, WHERE IS" with no warranty or guarantees, expressed or implied, No operational assessments have been made by DPA Auctions on this item, it has been photographed ONLY



#188 - 1996 International 4700 Service Truck (NP8088)

1996 International 4700 Service Truck (NP8088), IH 466E diesel engine, Allison 545 automatic transmission, heat, Am/Fm radio, single axle, 16' flatbed, underbody tool boxes, used as a service truck w/ Lincoln Electric Ranger 250 welder, torch and Ingersoll-Rand gas powered air compressor, 600 gallon diesel fuel transfer tank and pump, shows 159,700 miles. Notes: Item Location: Clinton, IA 52732 Equipment Sold "AS IS, WHERE IS": All equipment/property is sold "AS IS, WHERE IS" with no warranty or guarantees, expressed or implied, No operational assessments have been made by DPA Auctions on this item, it has been photographed ONLY



#189 - Adams Vertical Blender (NP8092)

Adams Vertical Blender (NP8092), 8 ton capacity, stainless steel, side mount hopper, Cardinal 748 digital scale. Notes: Item Location: Durant, OK 74701 Equipment Sold "AS IS, WHERE IS": All equipment/property is sold "AS IS, WHERE IS" with no warranty or guarantees, expressed or implied, No operational assessments have been made by DPA Auctions on this item, it has been photographed ONLY



#190 - Hopper Bin (NP8085)

Hopper Bin (NP8085), approx. 7,500 bushel capacity, 18' diameter, approx. 46' tall, (2) aeration fans, 8" auger x 20', 3 phase 10HP motor. Notes: This item must be removed by August 15, 2019, NO EXCEPTIONS. Dismantle, removal and transportation is at the expense, risk and liability of the buyer. Item Location: Low Moor, IA 52757 Equipment Sold "AS IS, WHERE IS": All equipment/property is sold "AS IS, WHERE IS" with no warranty or guarantees, expressed or implied, No operational assessments have been made by DPA Auctions on this item, it has been photographed ONLY



#191 - Grain Leg (CP-1001)

Grain Leg (CP-1001), approx. 60' grain leg, 3,000 BPH capacity, 6" x 11" cups, 8" spacing, down spouts, distributor, ladder cage, includes cross auger connected to elevator, NO CONTROL PANEL. Notes: This item must be removed by June 14, 2019, NO EXCEPTIONS. Dismantle, removal and transportation is at the expense, risk and liability of the buyer. Seller asks to please make arrangements to dismantle 2 weeks in advance removal process. Item Location: Bavaria, KS 67401 Equipment Sold "AS IS, WHERE IS": All equipment/property is sold "AS IS, WHERE IS" with no warranty or guarantees, expressed or implied, No operational assessments have been made by DPA Auctions on this item, it has been photographed ONLY



#192 - Behlen Flat Storage Building (CP-1000)

Behlen Flat Storage Building (CP-1000), approx. 160' L x 52.5' W, approx. 200,000 bushel capacity, cross auger, (4) Sukup electric aeration fans, Leg shown in pictures will SELL SEPARATELY on this auction. Notes: This item must be removed by June 14, 2019, NO EXCEPTIONS. Dismantle, removal and transportation is at the expense, risk and liability of the buyer. Seller asks to please make arrangements to dismantle 2 weeks in advance removal process. Item Location: Bavaria, KS 67401 Equipment Sold "AS IS, WHERE IS": All equipment/property is sold "AS IS, WHERE IS" with no warranty or guarantees, expressed or implied, No operational assessments have been made by DPA Auctions on this item, it has been photographed ONLY



#193 - Behlen Grain Bin (CP-1003)

Behlen Grain Bin (CP-1003), approx. 100,000 bushel capacity, concrete floor, sweep auger, pin holes located on one panel (see photos). Notes: This item must be removed by June 14, 2019, NO EXCEPTIONS. Dismantle, removal and transportation is at the expense, risk and liability of the buyer. Seller asks to please make arrangements to dismantle 2 weeks in advance removal process. Item Location: Culver, KS 67484 Equipment Sold "AS IS, WHERE IS": All equipment/property is sold "AS IS, WHERE IS" with no warranty or guarantees, expressed or implied, No operational assessments have been made by DPA Auctions on this item, it has been photographed ONLY



#194 - DUO LIFT Blue Mule Liquid Caddy (NP8032)

DUO LIFT Blue Mule Liquid Caddy (NP8032), Model DS2000, E-Z Lock system, approx. 2,000 gallon flat bottom poly liquid nurse tank, side mount Ace Roto-Mold 5 gallon poly tank, 320/90R46 tires, spring-loaded tongue. Notes: Item Location: Hillview, IL 62050 Equipment Sold "AS IS, WHERE IS": All equipment/property is sold "AS IS, WHERE IS" with no warranty or guarantees, expressed or implied, No operational assessments have been made by DPA Auctions on this item, it has been photographed ONLY



#195 - (24) Planter Applied Coulters (NP8031)

(24) Planter Applied Coulters (NP8031), for liquid 28% to 32% applicators, w/ RedBall components, drag chains (see photos). Notes: Item Location: Hillview, IL 62050 Equipment Sold "AS IS, WHERE IS": All equipment/property is sold "AS IS, WHERE IS" with no warranty or guarantees, expressed or implied, No operational assessments have been made by DPA Auctions on this item, it has been photographed ONLY



#196 - (2) CDS - John Blue Pumps (NP8030)

(2) CDS - John Blue Pumps (NP8030), (2) manifolds, comes with drive brackets for both pumps that fit John Deere planter. Notes: Item Location: Hillview, IL 62050 Equipment Sold "AS IS, WHERE IS": All equipment/property is sold "AS IS, WHERE IS" with no warranty or guarantees, expressed or implied, No operational assessments have been made by DPA Auctions on this item, it has been photographed ONLY



#197 - BRAND NEW 2 Row Planter Unit (NP8077)

BRAND NEW 2 Row Planter Unit (NP8077), BRAND NEW 2 row Row Pro planter by Ksfarms Mfg. Row units are very similar to John Deere/Kinze units. Most all parts are interchangeable. Planters feature the Drivemission to regulate seed and adjust population. Seed chart included. Laser cut mounts accept cat 1 and 2 quick hitches. Many additional options available to the winning bidder such as notill coulters, row cleaners, hydraulic markers, complete liquid fertilizer setups, etc. Auction is for two row planter pictured with green bar. However, winning bidder can exchange for a planter with a bar of another color. Optional colors are black, red, or blue. Notes: Freight charges apply if need to be shipped. Item Location: Baileyville, KS 66404 Equipment Sold "AS IS, WHERE IS": All equipment/property is sold "AS IS, WHERE IS" with no warranty or guarantees, expressed or implied, No operational assessments have been made by DPA Auctions on this item, it has been photographed ONLY



#198 - Falc 4500 Rotary Tiller (PD1274)

Falc 4500 Rotary Tiller (PD1274), 172 inches wide, comes with 2 sets of gears for gearbox, also has full set of "L" style shovels and a partially used set of "C" style shovels, suggest using at least 150HP tractor. Notes: Item Location: Butler, MO 64730 Equipment Sold "AS IS, WHERE IS": All equipment/property is sold "AS IS, WHERE IS" with no warranty or guarantees, expressed or implied, No operational assessments have been made by DPA Auctions on this item, it has been photographed ONLY



#199 - 2004 Loral Twin Bin Fertilizer Air Flow Box (ED910)

2004 Loral Twin Bin Fertilizer Air Flow Box (ED910), 2 compartment fertilizer box with granular bins, double chains feed air boom. Notes: Running gear is Not included. Item Location: Bird Island, MN 55310 Equipment Sold "AS IS, WHERE IS": All equipment/property is sold "AS IS, WHERE IS" with no warranty or guarantees, expressed or implied, No operational assessments have been made by DPA Auctions on this item, it has been photographed ONLY



#200 - 1996 Loral Chassis (ED911)

1996 Loral Chassis (ED911), 2574 IH Loral chassis, Cummins M11-370E motor, Allison 5 speed automatic transmission, front tires are 48X25.00-20, rears are Good Year 1000/50R25, shows 89,855 miles, shows 7933 hours. Notes: Item Location: Bird Island, MN 55310 Equipment Sold "AS IS, WHERE IS": All equipment/property is sold "AS IS, WHERE IS" with no warranty or guarantees, expressed or implied, No operational assessments have been made by DPA Auctions on this item, it has been photographed ONLY



#201 - 2005 John Deere 726 Mulch Finisher (PD1278)

2005 John Deere 726 Mulch Finisher (PD1278), disk gang, new Marathon sweeps, shank protectors, 5-bar harrow. Notes: Item Location: Pleasant Hill, MO 64080 Equipment Sold "AS IS, WHERE IS": All equipment/property is sold "AS IS, WHERE IS" with no warranty or guarantees, expressed or implied, No operational assessments have been made by DPA Auctions on this item, it has been photographed ONLY



#202 - 1800 Gallon Mid State Stainless Steel Tank (ED905)

1800 Gallon Mid State Stainless Steel Tank (ED905), 1800 gallon SS tank and skid with 3 inch V sump and sparge tube, 2 baffles. Notes: Item Location: Flanagan, IL 61740 Equipment Sold "AS IS, WHERE IS": All equipment/property is sold "AS IS, WHERE IS" with no warranty or guarantees, expressed or implied, No operational assessments have been made by DPA Auctions on this item, it has been photographed ONLY



#203 - 1990 Trail Star End Dump Trailer (PD1273)

1990 Trail Star End Dump Trailer (PD1273), 40 foot long x 96 inches wide, brand new brakes, drums, tires, in good working order, has full plastic liner and roll tarp, tarp has slight tear in the back right corner, cylinder leaks ever so slightly, farmer owned the last 20 years, in good working order. Notes: Item Location: Butler, MO 64730 Equipment Sold "AS IS, WHERE IS": All equipment/property is sold "AS IS, WHERE IS" with no warranty or guarantees, expressed or implied, No operational assessments have been made by DPA Auctions on this item, it has been photographed ONLY



#204 - 2006 Western Star 4900 Truck (PD1272)

2006 Western Star 4900 Truck (PD1272), 14L Detroit 60 515 HP engine, Eaton fuller 13 speed transmission, JVC AM/FM CD player, 266 inch wheelbase, 11R22.5 tires at 90% , AP Unit, new air equipped seat, power seat, all aluminum wheels, shows 1,233,085 miles. Notes: Item Location: Milton, KS 67106 Equipment Sold "AS IS, WHERE IS": All equipment/property is sold "AS IS, WHERE IS" with no warranty or guarantees, expressed or implied, No operational assessments have been made by DPA Auctions on this item, it has been photographed ONLY



#205 - 1993 Freightliner FLD120 Truck W/ 3200 Gallon Stainless Steel Midstates Tank (PD1277)

1993 Freightliner FLD120 Truck W/ 3200 Gallon Stainless Steel Midstates Tank (PD1277), tandem axle, C60 Detroit engine, 9 speed Fuller transmission, air ride suspension, 2 Hiback air seats, heat/air, cruise control, air brakes, 5 new/near new tires, DOT inspection as of 7-2018, 795,000 miles, 3200 gallon 2 compartment stainless steel midstates tank, 4 inch valves, 2 new 4 inch Keystone valves, 2 inch Sparge lines to each tank, 3 inch discharge valve(new), 4x3 Scott Pump (hydraulic drive). Notes: The spray boom, Raven flow meter & air actuators do not sell with truck! Item Location: Washington, IA 52353 Equipment Sold "AS IS, WHERE IS": All equipment/property is sold "AS IS, WHERE IS" with no warranty or guarantees, expressed or implied, No operational assessments have been made by DPA Auctions on this item, it has been photographed ONLY



#206 - 1986 New Holland TR86 Combine (NP7812)

1986 New Holland TR86 Combine (NP7812), 3208 Cat engine, hydrostatic drive, head reverser, AM/FM radio, bubble air auger, will need a starter solenoid, 23.1-26 front tires, 11.00-16 rear tires, shows 2234 hours. Notes: Combine was used for beans in 2018. Item Location: Burr Oak, KS 66936 Equipment Sold "AS IS, WHERE IS": All equipment/property is sold "AS IS, WHERE IS" with no warranty or guarantees, expressed or implied, No operational assessments have been made by DPA Auctions on this item, it has been photographed ONLY



#207 - 1997 Ford Service Truck (NP7810)

1997 Ford Service Truck (NP7810), 7.3L V8 OHV 16V Turbo Diesel engine, 5-speed manual transmission, AM/FM radio, power windows, power locks, cruise control, LT235/ 85R16 tires, hydraulic tow bar, Stahl Grand Challenger service body, starts and runs great, shows 313,334 miles. Notes: Buyer does not get any tools, box equipment or hitch. Good solid running vehicle. Item Location: Burr Oak, KS 66936 Equipment Sold "AS IS, WHERE IS": All equipment/property is sold "AS IS, WHERE IS" with no warranty or guarantees, expressed or implied, No operational assessments have been made by DPA Auctions on this item, it has been photographed ONLY



#208 - 1994 GMC Top Kick (NJP1366)

1994 GMC Top Kick (NJP1366), Cat diesel engine, 6 speed transmission, single axle, Arrow 2600 gallon LP bobtail tank, AM/FM radio, 22.5 tires, shows 232,657 miles. Notes: Item Location: Sutherland, NE 69165 Equipment Sold "AS IS, WHERE IS": All equipment/property is sold "AS IS, WHERE IS" with no warranty or guarantees, expressed or implied, No operational assessments have been made by DPA Auctions on this item, it has been photographed ONLY



#209 - 1998 Eagle 8100 Sprayer (TR7612)

1998 Eagle 8100 Sprayer (TR7612), 825 gal stainless tank, 80' booms, 5.9 Cummins Diesel Engine, Monitor is a Mid Tech ARC 6000. Am/FM, Heat/AC, Excellent condition, straight booms, professionally serviced, Family Farm owned. 1520 Hours. Notes: Item Location: Saint Edward, NE 68660 Equipment Sold "AS IS, WHERE IS": All equipment/property is sold "AS IS, WHERE IS" with no warranty or guarantees, expressed or implied, No operational assessments have been made by DPA Auctions on this item, it has been photographed ONLY



#210 - 2002 John Deere 4710 Sprayer (ED912)

2002 John Deere 4710 Sprayer (ED912), John Deere 6068T turbocharged 6 cylinder, 200 HP, hydrostatic transmission, standard cab with AC, heat, AM/FM radio and air suspension seat, 800 gallon stainless steel tank, 90 foot factor boom with shop made 5 foot extensions, hydraulic adjustable row width, Keltgen dual rims on 22" centers with 270/95R48 tires, Green Star Display, triple nozzle bodies, machine was completely gone through and serviced last spring but was not used due to weather, completely field ready, shows 2780 hours. Notes: Item Location: Bird Island, MN 55310 Equipment Sold "AS IS, WHERE IS": All equipment/property is sold "AS IS, WHERE IS" with no warranty or guarantees, expressed or implied, No operational assessments have been made by DPA Auctions on this item, it has been photographed ONLY



#211 - Trimble EZ-Steer 500 (ED914)

Trimble EZ-Steer 500 (ED914), Trimble EZ-Steer 500 Assisted steering system, complete with antenna, lightbar, keypad, controller, motor and bracket. Notes: Item Location: Bird Island, MN 55310 Equipment Sold "AS IS, WHERE IS": All equipment/property is sold "AS IS, WHERE IS" with no warranty or guarantees, expressed or implied, No operational assessments have been made by DPA Auctions on this item, it has been photographed ONLY



#212 - Trimble Light Bar (ED913)

Trimble Light Bar (ED913), Trimble AgGPS light bar complete unit with globe and display. Notes: Item Location: Bird Island, MN 55310 Equipment Sold "AS IS, WHERE IS": All equipment/property is sold "AS IS, WHERE IS" with no warranty or guarantees, expressed or implied, No operational assessments have been made by DPA Auctions on this item, it has been photographed ONLY



#213 - 1996 Terra Gator 1803 Liquid Floater (TR7614)

1996 Terra Gator 1803 Liquid Floater (TR7614), 1996 1803 Terragator. 1800 gal Stainless Steel tank, 60-80 ft. boom wet boom with 30" spaced nozzles, several extra sets of camlock flood tips included, educator, 3" fill, Ag Leader Edge with direct command and 7 section automatic boom shutoff, Cummins 8.3L engine, 18sp. torque boost trans, 3810 hours, onboard hydraulic drive pressure washer (works great), converted to LED lights, keeping top of cab LED lights. Notes: Sprayer is in excellent condition and is field ready. Gator Center, Fort Dodge, Iowa installed the 7 section shut off and converted it to be able to use Ag Leader components to run auto swath. Machine has always been shedded. At the end of every season machine was checked over. All boom spot rust was wire wheeled and painted. All fluids were checked and changed as required. Right main boom swing hinge was rebuilt 1 year ago. 60-80 boom hinges have also been rebuilt. Air conditioning worked but may need to be recharged. Tires have some stubble damage and are 40-50%. Torque boost transmission works very well (if not familiar with a torque boost it works like a torque converter. This transmission has been very easy to operate-almost enjoyable). Wet boom drains, and a few extra ball valves have been added to assist in cleanout and winterization. This is an excellent high volume sprayer that runs out well and has a lot of remaining life. Item Location: Cook, NE 68329 Equipment Sold "AS IS, WHERE IS": All equipment/property is sold "AS IS, WHERE IS" with no warranty or guarantees, expressed or implied, No operational assessments have been made by DPA Auctions on this item, it has been photographed ONLY



#214 - Injection System (TR7615)

Injection System (TR7615), Raven dual product injection system removed from 1803 Terragator. Two Raven injectors and two SS product tanks, includes plumbing. Injection system was removed from 1803 Terra Gator being sold on this auction. Notes: Item Location: Cook, NE 68329 Equipment Sold "AS IS, WHERE IS": All equipment/property is sold "AS IS, WHERE IS" with no warranty or guarantees, expressed or implied, No operational assessments have been made by DPA Auctions on this item, it has been photographed ONLY



#215 - Raven Monitor (TR7613)

Raven Monitor (TR7613), Raven Monitor and Guidance Bar, all wiring came out of a 1999 Terra Gator. All worked when taken out. Notes: Item Location: Albion, NE 68620 Equipment Sold "AS IS, WHERE IS": All equipment/property is sold "AS IS, WHERE IS" with no warranty or guarantees, expressed or implied, No operational assessments have been made by DPA Auctions on this item, it has been photographed ONLY



#216 - Preciesion Planting Seed Tubes (DR1419)

Preciesion Planting Seed Tubes (DR1419), (10) used John Deere seed tubes, good sensors, (28) NEW Bullseye 3/4" hole seed tubes, (16) NEW Bullseye 1/2" hole seed tubes, (20) NEW John Deere 7200 seed tubes. Notes: Item Location: Fairmont, MN 56031 Equipment Sold "AS IS, WHERE IS": All equipment/property is sold "AS IS, WHERE IS" with no warranty or guarantees, expressed or implied, No operational assessments have been made by DPA Auctions on this item, it has been photographed ONLY



#217 - Seed Tubes (DR1420)

Seed Tubes (DR1420), (36) NEW Bullseye 7200 seed tubes. Notes: Item Location: Fairmont, MN 56031 Equipment Sold "AS IS, WHERE IS": All equipment/property is sold "AS IS, WHERE IS" with no warranty or guarantees, expressed or implied, No operational assessments have been made by DPA Auctions on this item, it has been photographed ONLY



#218 - Precision Planting E-Sets (DR1421)

Precision Planting E-Sets (DR1421), (8) NEW E-Set conversion kits, (2) part #720136 E-Set conversion kits, (2) smart connector and rum kits. Notes: Item Location: Fairmont, MN 56031 Equipment Sold "AS IS, WHERE IS": All equipment/property is sold "AS IS, WHERE IS" with no warranty or guarantees, expressed or implied, No operational assessments have been made by DPA Auctions on this item, it has been photographed ONLY



#219 - Seed Tubes (DR1422)

Seed Tubes (DR1422), (36) NEW Bullseye 7200 seed tubes, (2) with Smart Vision. Notes: Item Location: Fairmont, MN 56031 Equipment Sold "AS IS, WHERE IS": All equipment/property is sold "AS IS, WHERE IS" with no warranty or guarantees, expressed or implied, No operational assessments have been made by DPA Auctions on this item, it has been photographed ONLY



#220 - Precision Planting Parts (DR1423)

Precision Planting Parts (DR1423), (7) low profile firmers, modules, approximately (8) Ram mounts. Notes: Item Location: Fairmont, MN 56031 Equipment Sold "AS IS, WHERE IS": All equipment/property is sold "AS IS, WHERE IS" with no warranty or guarantees, expressed or implied, No operational assessments have been made by DPA Auctions on this item, it has been photographed ONLY



#221 - Precision Planting Hydraulic Kit (DR1426)

Precision Planting Hydraulic Kit (DR1426), 3 drawer hydraulic repair kit for precision planting, 3 drawer electrical repair kit for precision planting. Notes: Item Location: Fairmont, MN 56031 Equipment Sold "AS IS, WHERE IS": All equipment/property is sold "AS IS, WHERE IS" with no warranty or guarantees, expressed or implied, No operational assessments have been made by DPA Auctions on this item, it has been photographed ONLY



#222 - Precision Planting Parts (DR1424)

Precision Planting Parts (DR1424), harnesses, (7) weigh pins, (2) cylinders. Notes: Item Location: Fairmont, MN 56031 Equipment Sold "AS IS, WHERE IS": All equipment/property is sold "AS IS, WHERE IS" with no warranty or guarantees, expressed or implied, No operational assessments have been made by DPA Auctions on this item, it has been photographed ONLY



#223 - Precision Planting Parts (DR1427)

Precision Planting Parts (DR1427), pallet lot of precision planting parts, testing equipment, V-Set meter w/seed disc, row modules, power modules & harness. Notes: Item Location: Fairmont, MN 56031 Equipment Sold "AS IS, WHERE IS": All equipment/property is sold "AS IS, WHERE IS" with no warranty or guarantees, expressed or implied, No operational assessments have been made by DPA Auctions on this item, it has been photographed ONLY



#224 - New Compressor (DR1428)

New Compressor (DR1428), NEW hydraulic planter compressor and mounting bracket. Notes: Item Location: Fairmont, MN 56031 Equipment Sold "AS IS, WHERE IS": All equipment/property is sold "AS IS, WHERE IS" with no warranty or guarantees, expressed or implied, No operational assessments have been made by DPA Auctions on this item, it has been photographed ONLY



#225 - Precision Harvesting Parts (DR1429)

Precision Harvesting Parts (DR1429), NEW parts, hydraulic motor kit, hydraulic manifold w/sensor, John Deere combine elevator chain, Case IH parts. Notes: Item Location: Fairmont, MN 56031 Equipment Sold "AS IS, WHERE IS": All equipment/property is sold "AS IS, WHERE IS" with no warranty or guarantees, expressed or implied, No operational assessments have been made by DPA Auctions on this item, it has been photographed ONLY



#226 - Precision Planting Parts (DR1430)

Precision Planting Parts (DR1430), precision vacuum sensor SRM row kit, (8) row unit modules, John Deere 7200 switch kits, weigh pins and rums. Notes: Item Location: Fairmont, MN 56031 Equipment Sold "AS IS, WHERE IS": All equipment/property is sold "AS IS, WHERE IS" with no warranty or guarantees, expressed or implied, No operational assessments have been made by DPA Auctions on this item, it has been photographed ONLY



#227 - John Deere Factory 2x2 Liquid System (KMK780)

John Deere Factory 2x2 Liquid System (KMK780), complete John Deere factory 2x2 liquid system, came off John Deere 7200, 12 row planter, six (6) 70 gallon poly tanks with mounting brackets, 12 single disk fertilizer coulters, two (2) squeeze pumps. Notes: Item Location: La Belle, MO 63447 Equipment Sold "AS IS, WHERE IS": All equipment/property is sold "AS IS, WHERE IS" with no warranty or guarantees, expressed or implied, No operational assessments have been made by DPA Auctions on this item, it has been photographed ONLY



#228 - 12 Rows No Till Coulters (ED901)

12 Rows No Till Coulters (ED901), total of 12 rows of no till coulters less the mounting brackets, lots of life on them. Notes: Item Location: Frankfort, IN 46041 Equipment Sold "AS IS, WHERE IS": All equipment/property is sold "AS IS, WHERE IS" with no warranty or guarantees, expressed or implied, No operational assessments have been made by DPA Auctions on this item, it has been photographed ONLY



#229 - (16) Row Smart Box System (ED899)

(16) Row Smart Box System (ED899), total of 16 row smart box systems with harnesses, (4) smart boxes off a John Deere DB90 with wiring harnesses, can be used for spare parts. Notes: Item Location: Frankfort, IN 46041 Equipment Sold "AS IS, WHERE IS": All equipment/property is sold "AS IS, WHERE IS" with no warranty or guarantees, expressed or implied, No operational assessments have been made by DPA Auctions on this item, it has been photographed ONLY



#230 - 12 Rows John Deere Boxes, Eset Meters and Corn Plates (ED902)

12 Rows John Deere Boxes, Eset Meters and Corn Plates (ED902), total of 12 rows of John Deere boxes, Eset meters and corn plates, all in great condition. Notes: Item Location: Frankfort, IN 46041 Equipment Sold "AS IS, WHERE IS": All equipment/property is sold "AS IS, WHERE IS" with no warranty or guarantees, expressed or implied, No operational assessments have been made by DPA Auctions on this item, it has been photographed ONLY



#231 - Gen 1 Smart Connector (ED903)

Gen 1 Smart Connector (ED903), one smart connector Gen 1, good working condition. Notes: Item Location: Frankfort, IN 46041 Equipment Sold "AS IS, WHERE IS": All equipment/property is sold "AS IS, WHERE IS" with no warranty or guarantees, expressed or implied, No operational assessments have been made by DPA Auctions on this item, it has been photographed ONLY



#232 - (22) Flo-Rite Seed Firmers (LD118)

(22) Flo-Rite Seed Firmers (LD118), have a stainless steel tube for in furrow fertilizer application, very little wear. Notes: There is very little wear on these. Item Location: Geneseo, IL 61254 Equipment Sold "AS IS, WHERE IS": All equipment/property is sold "AS IS, WHERE IS" with no warranty or guarantees, expressed or implied, No operational assessments have been made by DPA Auctions on this item, it has been photographed ONLY



#233 - (24) Precision Planting eSet Units (LD117)

(24) Precision Planting eSet Units (LD117), in John Deere boxes, comes with corn and bean discs, two seasons on new corn discs. Notes: Item Location: Geneseo, IL 61254 Equipment Sold "AS IS, WHERE IS": All equipment/property is sold "AS IS, WHERE IS" with no warranty or guarantees, expressed or implied, No operational assessments have been made by DPA Auctions on this item, it has been photographed ONLY



#234 - 2015 McHale 991BC Bale Wrapper (DL486)

2015 McHale 991BC Bale Wrapper (DL486), 2015 McHale 991BC single round bale wrapper, wraps 60" bale, cable controlled, self loading & unloading, can unload bale on end or side, has wrapped 1200-1500 bales, always shedded. Notes: Item Location: Chariton, IA 50049 Equipment Sold "AS IS, WHERE IS": All equipment/property is sold "AS IS, WHERE IS" with no warranty or guarantees, expressed or implied, No operational assessments have been made by DPA Auctions on this item, it has been photographed ONLY



#235 - Raven AutoBoom Kit (PD1259)

Raven AutoBoom Kit (PD1259), used for parts only, includes wiring, controller, sensors and hydraulic block, kit removed as it did not work but still has good components. Notes: Item Location: Ridott, IL 61067 Equipment Sold "AS IS, WHERE IS": All equipment/property is sold "AS IS, WHERE IS" with no warranty or guarantees, expressed or implied, No operational assessments have been made by DPA Auctions on this item, it has been photographed ONLY



#236 - Rogator TerraGator Hydraulics (PD1261)

Rogator TerraGator Hydraulics (PD1261), two 8103 cable boom tension hydraulic cylinders, one 8103 boom tilt cylinder, one 1274 Rogator mast height cylinder, one pressure washer pump and hose reel, pump removed from a 1998 8103 liquid unit. Notes: Item Location: Ridott, IL 61067 Equipment Sold "AS IS, WHERE IS": All equipment/property is sold "AS IS, WHERE IS" with no warranty or guarantees, expressed or implied, No operational assessments have been made by DPA Auctions on this item, it has been photographed ONLY



#237 - Hiniker Parts (PD1251)

Hiniker Parts (PD1251), various Hiniker NH3 parts including two 8100 monitors, three 8150 monitors, mounting brackets, two NH3 coolers, miscellaneous wiring harnesses, hydraulic shutoff, removed due to upgrades. Notes: Item Location: Ridott, IL 61067 Equipment Sold "AS IS, WHERE IS": All equipment/property is sold "AS IS, WHERE IS" with no warranty or guarantees, expressed or implied, No operational assessments have been made by DPA Auctions on this item, it has been photographed ONLY



#238 - Complete Hiniker NH3 Kit (PD1247)

Complete Hiniker NH3 Kit (PD1247), includes cooler, flow meter, control valve, hydraulic shut off, wiring and 8150 console, kit was removed from toolbar and replaced with a Raven set up to match another toolbar. Notes: Item Location: Ridott, IL 61067 Equipment Sold "AS IS, WHERE IS": All equipment/property is sold "AS IS, WHERE IS" with no warranty or guarantees, expressed or implied, No operational assessments have been made by DPA Auctions on this item, it has been photographed ONLY



#239 - Raven SCS 750 Monitor (PD1260)

Raven SCS 750 Monitor (PD1260). Notes: Item Location: Ridott, IL 61067 Equipment Sold "AS IS, WHERE IS": All equipment/property is sold "AS IS, WHERE IS" with no warranty or guarantees, expressed or implied, No operational assessments have been made by DPA Auctions on this item, it has been photographed ONLY



#240 - Rag Can (PD1258)

Rag Can (PD1258), can for shop towels and oil covered rags, foot lever opener. Notes: Item Location: Ridott, IL 61067 Equipment Sold "AS IS, WHERE IS": All equipment/property is sold "AS IS, WHERE IS" with no warranty or guarantees, expressed or implied, No operational assessments have been made by DPA Auctions on this item, it has been photographed ONLY



#241 - TRUE Brand Commercial Double Door Cooler (PD1248)

TRUE Brand Commercial Double Door Cooler (PD1248), adjustable racks, worked when removed, measures 4 foot 6 inches wide, 6 foot 8 inches tall, 2 foot 5 inches deep. Notes: Item Location: Ridott, IL 61067 Equipment Sold "AS IS, WHERE IS": All equipment/property is sold "AS IS, WHERE IS" with no warranty or guarantees, expressed or implied, No operational assessments have been made by DPA Auctions on this item, it has been photographed ONLY



#242 - John Deere Gauge Wheels (PD1250)

John Deere Gauge Wheels (PD1250), removed from 2510H HSLD toolbar measure wheels have sat for a couple years, 16 3 inch and 7 4 inch wheels. Notes: Item Location: Ridott, IL 61067 Equipment Sold "AS IS, WHERE IS": All equipment/property is sold "AS IS, WHERE IS" with no warranty or guarantees, expressed or implied, No operational assessments have been made by DPA Auctions on this item, it has been photographed ONLY



#243 - Junge Weigh Tub (PD1252)

Junge Weigh Tub (PD1252), used for parts. Notes: Item Location: Ridott, IL 61067 Equipment Sold "AS IS, WHERE IS": All equipment/property is sold "AS IS, WHERE IS" with no warranty or guarantees, expressed or implied, No operational assessments have been made by DPA Auctions on this item, it has been photographed ONLY



#244 - 24 Schaffert G2 Fertilizer Openers (PD1262)

24 Schaffert G2 Fertilizer Openers (PD1262), came off Kinze 4900, 3 seasons, great shape. Notes: Item Location: Wheatland, IA 52777 Equipment Sold "AS IS, WHERE IS": All equipment/property is sold "AS IS, WHERE IS" with no warranty or guarantees, expressed or implied, No operational assessments have been made by DPA Auctions on this item, it has been photographed ONLY



#245 - Metal Siding/Roofing (DR1444)

Metal Siding/Roofing (DR1444), (30) sheets, American made, White color, 16'-4" long X 36" overlap coverage, Premium Pro Rib Profile style, 29 gauge. ALWAYS stored inside. Meets all USA building material engineering codes for Tested Tolerances for wind & snow. USA stamped seal of approval documentation on all products. Notes: Loadout IS available with flexible appointments. Can also offer hardware, trim, corners at wholesale prices. Item Location: Monroe, NE 68647 Equipment Sold "AS IS, WHERE IS": All equipment/property is sold "AS IS, WHERE IS" with no warranty or guarantees, expressed or implied, No operational assessments have been made by DPA Auctions on this item, it has been photographed ONLY



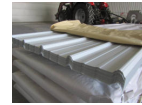
#246 - Metal Siding/Roofing (DR1445)

Metal Siding/Roofing (DR1445), (30) sheets, American made, White color, 16'-4" long X 36" overlap coverage, Premium Pro Rib Profile style, 29 gauge. ALWAYS stored inside. Meets all USA building material engineering codes for Tested Tolerances for wind & snow. USA stamped seal of approval documentation on all products. Notes: Loadout IS available with flexible appointments. Can also offer hardware, trim, corners at wholesale prices. Item Location: Monroe, NE 68647 Equipment Sold "AS IS, WHERE IS": All equipment/property is sold "AS IS, WHERE IS" with no warranty or guarantees, expressed or implied, No operational assessments have been made by DPA Auctions on this item, it has been photographed ONLY



#247 - Metal Siding/Roofing (DR1446)

Metal Siding/Roofing (DR1446), (40) sheets, American made, White color, 10'-4" long X 36" overlap coverage, Premium Pro Rib Profile style, 29 gauge. ALWAYS stored inside. Meets all USA building material engineering codes for Tested Tolerances for wind & snow. USA stamped seal of approval documentation on all products. Notes: Loadout IS available with flexible appointments. Can also offer hardware, trim, corners at wholesale prices. Item Location: Monroe, NE 68647 Equipment Sold "AS IS, WHERE IS": All equipment/property is sold "AS IS, WHERE IS" with no warranty or guarantees, expressed or implied, No operational assessments have been made by DPA Auctions on this item, it has been photographed ONLY



#248 - Metal Siding/Roofing (DR1447)

Metal Siding/Roofing (DR1447), (40) sheets, American made, White color, 10'-4" long X 36" overlap coverage, Premium Pro Rib Profile style, 29 gauge. ALWAYS stored inside. Meets all USA building material engineering codes for Tested Tolerances for wind & snow. USA stamped seal of approval documentation on all products. Notes: Loadout IS available with flexible appointments. Can also offer hardware, trim, corners at wholesale prices. Item Location: Monroe, NE 68647 Equipment Sold "AS IS, WHERE IS": All equipment/property is sold "AS IS, WHERE IS" with no warranty or guarantees, expressed or implied, No operational assessments have been made by DPA Auctions on this item, it has been photographed ONLY



#249 - Metal Siding/Roofing (DR1448)

Metal Siding/Roofing (DR1448), (30) sheets, American made, White color, 18'-4" long X 36" overlap coverage, Premium Pro Rib Profile style, 29 gauge. ALWAYS stored inside. Meets all USA building material engineering codes for Tested Tolerances for wind & snow. USA stamped seal of approval documentation on all products. Notes: Loadout IS available with flexible appointments. Can also offer hardware, trim, corners at wholesale prices. Item Location: Monroe, NE 68647 Equipment Sold "AS IS, WHERE IS": All equipment/property is sold "AS IS, WHERE IS" with no warranty or guarantees, expressed or implied, No operational assessments have been made by DPA Auctions on this item, it has been photographed ONLY



#250 - Metal Siding/Roofing (DR1449)

Metal Siding/Roofing (DR1449), (30) sheets, American made, White color, 18'-4" long X 36" overlap coverage, Premium Pro Rib Profile style, 29 gauge. ALWAYS stored inside. Meets all USA building material engineering codes for Tested Tolerances for wind & snow. USA stamped seal of approval documentation on all products. Notes: Loadout IS available with flexible appointments. Can also offer hardware, trim, corners at wholesale prices. Item Location: Monroe, NE 68647 Equipment Sold "AS IS, WHERE IS": All equipment/property is sold "AS IS, WHERE IS" with no warranty or guarantees, expressed or implied, No operational assessments have been made by DPA Auctions on this item, it has been photographed ONLY



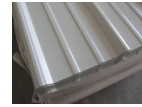
#251 - Metal Siding/Roofing (DR1450)

Metal Siding/Roofing (DR1450), (30) sheets, American made, White color, 14'-4" long X 36" overlap coverage, Premium Pro Rib Profile style, 29 gauge. ALWAYS stored inside. Meets all USA building material engineering codes for Tested Tolerances for wind & snow. USA stamped seal of approval documentation on all products. Notes: Loadout IS available with flexible appointments. Can also offer hardware, trim, corners at wholesale prices. Item Location: Monroe, NE 68647 Equipment Sold "AS IS, WHERE IS": All equipment/property is sold "AS IS, WHERE IS" with no warranty or guarantees, expressed or implied, No operational assessments have been made by DPA Auctions on this item, it has been photographed ONLY



#252 - Metal Siding/Roofing (DR1451)

Metal Siding/Roofing (DR1451), (30) sheets, American made, White color, 14'-4" long X 36" overlap coverage, Premium Pro Rib Profile style, 29 gauge. ALWAYS stored inside. Meets all USA building material engineering codes for Tested Tolerances for wind & snow. USA stamped seal of approval documentation on all products. Notes: Loadout IS available with flexible appointments. Can also offer hardware, trim, corners at wholesale prices. Item Location: Monroe, NE 68647 Equipment Sold "AS IS, WHERE IS": All equipment/property is sold "AS IS, WHERE IS" with no warranty or guarantees, expressed or implied, No operational assessments have been made by DPA Auctions on this item, it has been photographed ONLY



#253 - Metal Siding/Roofing (DR1452)

Metal Siding/Roofing (DR1452), (30) sheets, American made, Burnish Slate color, 16' long X 36" overlap coverage, Premium Pro Rib Profile style, 29 gauge. ALWAYS stored inside. Meets all USA building material engineering codes for Tested Tolerances for wind & snow. USA stamped seal of approval documentation on all products. Notes: Loadout IS available with flexible appointments. Can also offer hardware, trim, corners at wholesale prices. Item Location: Monroe, NE 68647 Equipment Sold "AS IS, WHERE IS": All equipment/property is sold "AS IS, WHERE IS" with no warranty or guarantees, expressed or implied, No operational assessments have been made by DPA Auctions on this item, it has been photographed ONLY



#254 - Metal Siding/Roofing (DR1453)

Metal Siding/Roofing (DR1453), (30) sheets, American made, Burnish Slate color, 16' long X 36" overlap coverage, Premium Pro Rib Profile style, 29 gauge. ALWAYS stored inside. Meets all USA building material engineering codes for Tested Tolerances for wind & snow. USA stamped seal of approval documentation on all products. Notes: Loadout IS available with flexible appointments. Can also offer hardware, trim, corners at wholesale prices. Item Location: Monroe, NE 68647 Equipment Sold "AS IS, WHERE IS": All equipment/property is sold "AS IS, WHERE IS" with no warranty or guarantees, expressed or implied, No operational assessments have been made by DPA Auctions on this item, it has been photographed ONLY



#255 - Metal Siding/Roofing (DR1454)

Metal Siding/Roofing (DR1454), (30) sheets, American made, Burnish Slate color, 16' long X 36" overlap coverage, Premium Pro Rib Profile style, 29 gauge. ALWAYS stored inside. Meets all USA building material engineering codes for Tested Tolerances for wind & snow. USA stamped seal of approval documentation on all products. Notes: Loadout IS available with flexible appointments. Can also offer hardware, trim, corners at wholesale prices. Item Location: Monroe, NE 68647 Equipment Sold "AS IS, WHERE IS": All equipment/property is sold "AS IS, WHERE IS" with no warranty or guarantees, expressed or implied, No operational assessments have been made by DPA Auctions on this item, it has been photographed ONLY



#256 - Metal Siding/Roofing (DR1455)

Metal Siding/Roofing (DR1455), (30) sheets, American made, Burnish Slate color, 16' long X 36" overlap coverage, Premium Pro Rib Profile style, 29 gauge. ALWAYS stored inside. Meets all USA building material engineering codes for Tested Tolerances for wind & snow. USA stamped seal of approval documentation on all products. Notes: Loadout IS available with flexible appointments. Can also offer hardware, trim, corners at wholesale prices. Item Location: Monroe, NE 68647 Equipment Sold "AS IS, WHERE IS": All equipment/property is sold "AS IS, WHERE IS" with no warranty or guarantees, expressed or implied, No operational assessments have been made by DPA Auctions on this item, it has been photographed ONLY



#257 - Metal Siding/Roofing (DR1456)

Metal Siding/Roofing (DR1456), (30) sheets, American made, Burnish Slate color, 16' long X 36" overlap coverage, Premium Pro Rib Profile style, 29 gauge. ALWAYS stored inside. Meets all USA building material engineering codes for Tested Tolerances for wind & snow. USA stamped seal of approval documentation on all products. Notes: Loadout IS available with flexible appointments. Can also offer hardware, trim, corners at wholesale prices. Item Location: Monroe, NE 68647 Equipment Sold "AS IS, WHERE IS": All equipment/property is sold "AS IS, WHERE IS" with no warranty or guarantees, expressed or implied, No operational assessments have been made by DPA Auctions on this item, it has been photographed ONLY



#258 - Zuidberg 1000 RPM PTO (DL488)

Zuidberg 1000 RPM PTO (DL488), Zuidberg 1000 RPM PTO with torsion damper. Notes: Item Location: Biglerville, PA 17307 Equipment Sold "AS IS, WHERE IS": All equipment/property is sold "AS IS, WHERE IS" with no warranty or guarantees, expressed or implied, No operational assessments have been made by DPA Auctions on this item, it has been photographed ONLY



#259 - Zuidberg (DL487)

Zuidberg (DL487), Zuidberg 11,000 lbs. lift capacity, 2 point linkages, vendor part# 6050515A. Notes: Item Location: Biglerville, PA 17307 Equipment Sold "AS IS, WHERE IS": All equipment/property is sold "AS IS, WHERE IS" with no warranty or guarantees, expressed or implied, No operational assessments have been made by DPA Auctions on this item, it has been photographed ONLY



#260 - L.M.T. 3350 Slurry Tank (KMK788)

L.M.T. 3350 Slurry Tank (KMK788), LMT, 3350 gallon slurry tank, tandem axle, no injectors, 1000 pto., two (2) extra tires not mounted are included, good tank with no leaks. Notes: Item Location: Big Rock, IL 60511 Equipment Sold "AS IS, WHERE IS": All equipment/property is sold "AS IS, WHERE IS" with no warranty or guarantees, expressed or implied, No operational assessments have been made by DPA Auctions on this item, it has been photographed ONLY



#261 - John Deere 7000 Bean Planter/ Hiniker Air Seeder (KMK787)

John Deere 7000 Bean Planter/ Hiniker Air Seeder (KMK787), 24 row, 15" bean planter, John Deere 7000 planter units, HD down pressure springs, hydraulic fold, no till coulters, Hiniker 5800 air seeder, hydraulic blower, ground driven 3000 lbs. hopper, used last season. Notes: Item Location: Big Rock, IL 60511 Equipment Sold "AS IS, WHERE IS": All equipment/property is sold "AS IS, WHERE IS" with no warranty or guarantees, expressed or implied, No operational assessments have been made by DPA Auctions on this item, it has been photographed ONLY



#262 - Markers For John Deere 24 Row 1770 Planter (PD1269)

Markers For John Deere 24 Row 1770 Planter (PD1269). Notes: Item Location: Madison, NE 68748 Equipment Sold "AS IS, WHERE IS": All equipment/property is sold "AS IS, WHERE IS" with no warranty or guarantees, expressed or implied, No operational assessments have been made by DPA Auctions on this item, it has been photographed ONLY



#263 - 24 John Deere 3 Bushel Boxes With Lids (PD1271)

24 John Deere 3 Bushel Boxes With Lids (PD1271), off of 24 row John Deere 1770 planter. Notes: Item Location: Madison, NE 68748 Equipment Sold "AS IS, WHERE IS": All equipment/property is sold "AS IS, WHERE IS" with no warranty or guarantees, expressed or implied, No operational assessments have been made by DPA Auctions on this item, it has been photographed ONLY



#264 - 24 Yetter Row Cleaners (PD1270)

24 Yetter Row Cleaners (PD1270), top adjust. Notes: Item Location: Madison, NE 68748 Equipment Sold "AS IS, WHERE IS": All equipment/property is sold "AS IS, WHERE IS" with no warranty or guarantees, expressed or implied, No operational assessments have been made by DPA Auctions on this item, it has been photographed ONLY



#265 - Parts off John Deere 1770NT Planter (NP8093)

Parts off John Deere 1770NT Planter (NP8093), (16) cables with mounting and drive parts, cables spin freely, seller will junk shafts if buyer does not want them. Notes: Item Location: Wellman, IA 52356 Equipment Sold "AS IS, WHERE IS": All equipment/property is sold "AS IS, WHERE IS" with no warranty or guarantees, expressed or implied, No operational assessments have been made by DPA Auctions on this item, it has been photographed ONLY



#266 - Electric Over Hydraulic Drive Motors (NP8094)

Electric Over Hydraulic Drive Motors (NP8094), came off John Deere 1770NT planter, (2) motors with mounting hardware, also have John Deere wiring that can be thrown in. Notes: Item Location: Wellman, IA 52356 Equipment Sold "AS IS, WHERE IS": All equipment/property is sold "AS IS, WHERE IS" with no warranty or guarantees, expressed or implied, No operational assessments have been made by DPA Auctions on this item, it has been photographed ONLY



#267 - Case IH 700 Pro (DR1460)

Case IH 700 Pro (DR1460), Pro 700 monitor on Version 31, large tractor which is compatible with any Case IH or New Holland large MFWD or 4WD tractor. Any CNH dealer can download new software on the 700 Pro for any tractor, combine, or sprayer application. This unit includes ram bar mount for Case IH AFS & New Holland Intelliview ready equipment. Notes: Shipping costs are \$20 via UPS in Continental US. Item Location: Morris, MN 56267 Equipment Sold "AS IS, WHERE IS": All equipment/property is sold "AS IS, WHERE IS" with no warranty or guarantees, expressed or implied, No operational assessments have been made by DPA Auctions on this item, it has been photographed ONLY



#268 - Case IH 700 Pro (DR1461)

Case IH 700 Pro (DR1461), Pro 700 monitor on Version 31, large tractor which is compatible with any Case IH or New Holland large MFWD or 4WD tractor. Any CNH dealer can download new software on the 700 Pro for any tractor, combine, or sprayer application. This unit includes ram bar mount for Case IH AFS & New Holland Intelliview ready equipment. Notes: Shipping costs are \$20 via UPS in Continental US. Item Location: Morris, MN 56267 Equipment Sold "AS IS, WHERE IS": All equipment/property is sold "AS IS, WHERE IS" with no warranty or guarantees, expressed or implied, No operational assessments have been made by DPA Auctions on this item, it has been photographed ONLY



#269 - Case IH 700 Pro (DR1462)

Case IH 700 Pro (DR1462), Pro 700 monitor on Version 31, large tractor which is compatible with any Case IH or New Holland large MFWD or 4WD tractor. Any CNH dealer can download new software on the 700 Pro for any tractor, combine, or sprayer application. This unit includes ram bar mount for Case IH AFS & New Holland Intelliview ready equipment. Notes: Shipping costs are \$20 via UPS in Continental US. Item Location: Morris, MN 56267 Equipment Sold "AS IS, WHERE IS": All equipment/property is sold "AS IS, WHERE IS" with no warranty or guarantees, expressed or implied, No operational assessments have been made by DPA Auctions on this item, it has been photographed ONLY



#270 - Case IH 700 Pro (DR1463)

Case IH 700 Pro (DR1463), Pro 700 monitor on Version 31, large tractor which is compatible with any Case IH or New Holland large MFWD or 4WD tractor. Any CNH dealer can download new software on the 700 Pro for any tractor, combine, or sprayer application. This unit includes ram bar mount for Case IH AFS & New Holland Intelliview ready equipment. Notes: Shipping costs are \$20 via UPS in Continental US. Item Location: Morris, MN 56267 Equipment Sold "AS IS, WHERE IS": All equipment/property is sold "AS IS, WHERE IS" with no warranty or guarantees, expressed or implied, No operational assessments have been made by DPA Auctions on this item, it has been photographed ONLY



#271 - Case IH 700 Pro (DR1464)

Case IH 700 Pro (DR1464), Pro 700 monitor on Version 31, large tractor which is compatible with any Case IH or New Holland large MFWD or 4WD tractor. Any CNH dealer can download new software on the 700 Pro for any tractor, combine, or sprayer application. This unit includes ram bar mount for Case IH AFS & New Holland Intelliview ready equipment. Notes: Shipping costs are \$20 via UPS in Continental US. Item Location: Morris, MN 56267 Equipment Sold "AS IS, WHERE IS": All equipment/property is sold "AS IS, WHERE IS" with no warranty or guarantees, expressed or implied, No operational assessments have been made by DPA Auctions on this item, it has been photographed ONLY



#272 - Case IH 700 Pro (DR1465)

Case IH 700 Pro (DR1465), Pro 700 monitor on Version 31, large tractor which is compatible with any Case IH or New Holland large MFWD or 4WD tractor. Any CNH dealer can download new software on the 700 Pro for any tractor, combine, or sprayer application. This unit includes ram bar mount for Case IH AFS & New Holland Intelliview ready equipment. Notes: Shipping costs are \$20 via UPS in Continental US. Item Location: Morris, MN 56267 Equipment Sold "AS IS, WHERE IS": All equipment/property is sold "AS IS, WHERE IS" with no warranty or guarantees, expressed or implied, No operational assessments have been made by DPA Auctions on this item, it has been photographed ONLY



#273 - Case IH 372 Monitor (DR1466)

Case IH 372 Monitor (DR1466), unlocked to RTK with NO radio. This 372 can receive Omnistar, Centerpoint RTK, RTX, and Glonass signals. This receiver is currently on Version 8.30 and is compatible with any Case IH AFS & New Holland Intelliview tractors, combines or sprayers. This unit includes mounting bracket for Case IH AFS & New Holland Intelliview ready tractors. Notes: Shipping costs are \$20 via UPS in Continental US. Item Location: Morris, MN 56267 Equipment Sold "AS IS, WHERE IS": All equipment/property is sold "AS IS, WHERE IS" with no warranty or guarantees, expressed or implied, No operational assessments have been made by DPA Auctions on this item, it has been photographed ONLY



#274 - Case IH 372 Monitor (DR1467)

Case IH 372 Monitor (DR1467), unlocked to RTK with NO radio. This 372 can receive Omnistar, Centerpoint RTK, RTX, and Glonass signals. This receiver is currently on Version 8.30 and is compatible with any Case IH AFS & New Holland Intelliview tractors, combines or sprayers. This unit includes mounting bracket for Case IH AFS & New Holland Intelliview ready tractors. Notes: Shipping costs are \$20 via UPS in Continental US. Item Location: Morris, MN 56267 Equipment Sold "AS IS, WHERE IS": All equipment/property is sold "AS IS, WHERE IS" with no warranty or guarantees, expressed or implied, No operational assessments have been made by DPA Auctions on this item, it has been photographed ONLY



#275 - New Holland FM-750 Monitor VR (DR1468)

New Holland FM-750 Monitor VR (DR1468), yield monitoring, RTK & Glonass unlocked. This monitor is unlocked for DGPS, Omnistar XP/HP, Centerpoint RTX, RTK, Glonass, variable rate and yield monitoring. It is on Firmware Version 7.77 and has 393 hours total run time. It includes power cables, antenna cable, ram mount and ag25. Notes: Shipping costs are \$20 via UPS in Continental US. Item Location: Morris, MN 56267 Equipment Sold "AS IS, WHERE IS": All equipment/property is sold "AS IS, WHERE IS" with no warranty or guarantees, expressed or implied, No operational assessments have been made by DPA Auctions on this item, it has been photographed ONLY



#276 - New Holland FM-750 Monitor VR (DR1469)

New Holland FM-750 Monitor VR (DR1469), yield monitoring, RTK & Glonass unlocked. This monitor is unlocked for DGPS, Omnistar XP/HP, Centerpoint RTX, RTK, Glonass, variable rate and yield monitoring. It is on Firmware Version 7.77 and has 393 hours total run time. It includes power cables, antenna cable, ram mount and ag25. Notes: Shipping costs are \$20 via UPS in Continental US. Item Location: Morris, MN 56267 Equipment Sold "AS IS, WHERE IS": All equipment/property is sold "AS IS, WHERE IS" with no warranty or guarantees, expressed or implied, No operational assessments have been made by DPA Auctions on this item, it has been photographed ONLY



#277 - Case IH FM1000 (DR1470)

Case IH FM1000 (DR1470), RTK & Glonass unlocked. This monitor is unlocked for DGPS, Omnistar XP/HP, Centerpoint RTX, RTK & Glonass. It is on Firmware 10.13 and has 663 hours total run time. It includes power cables, antenna cable, ram mount and ag25. Notes: Shipping costs are \$20 via UPS in Continental US. Item Location: Morris, MN 56267 Equipment Sold "AS IS, WHERE IS": All equipment/property is sold "AS IS, WHERE IS" with no warranty or guarantees, expressed or implied, No operational assessments have been made by DPA Auctions on this item, it has been photographed ONLY



#278 - John Deere Cable Drives (PD1281)

John Deere Cable Drives (PD1281), 22 regular length parallel arm cables, 24 long parallel arm length cables, 28 gear boxes. Notes: Item Location: Fort Pierre, SD 57532 Equipment Sold "AS IS, WHERE IS": All equipment/property is sold "AS IS, WHERE IS" with no warranty or guarantees, expressed or implied, No operational assessments have been made by DPA Auctions on this item, it has been photographed ONLY



#279 - 36 John Deere Prodrive Cables (PD1279)

36 John Deere Prodrive Cables (PD1279), gear box included. Notes: Item Location: Fort Pierre, SD 57532 Equipment Sold "AS IS, WHERE IS": All equipment/property is sold "AS IS, WHERE IS" with no warranty or guarantees, expressed or implied, No operational assessments have been made by DPA Auctions on this item, it has been photographed ONLY



#280 - 24 John Deere Pneumatic Down Pressure Airbags (PD1290)

24 John Deere Pneumatic Down Pressure Airbags (PD1290). Notes: Item Location: Fort Pierre, SD 57532 Equipment Sold "AS IS, WHERE IS": All equipment/property is sold "AS IS, WHERE IS" with no warranty or guarantees, expressed or implied, No operational assessments have been made by DPA Auctions on this item, it has been photographed ONLY



#281 - 12 John Deere Dual Downforce Airbags (PD1283)

12 John Deere Dual Downforce Airbags (PD1283). Notes: Item Location: Fort Pierre, SD 57532 Equipment Sold "AS IS, WHERE IS": All equipment/property is sold "AS IS, WHERE IS" with no warranty or guarantees, expressed or implied, No operational assessments have been made by DPA Auctions on this item, it has been photographed ONLY



#282 - 24 Yetter Shark Tooth Wheels (PD1291)

24 Yetter Shark Tooth Wheels (PD1291), for rowcleaners. Notes: Item Location: Fort Pierre, SD 57532 Equipment Sold "AS IS, WHERE IS": All equipment/property is sold "AS IS, WHERE IS" with no warranty or guarantees, expressed or implied, No operational assessments have been made by DPA Auctions on this item, it has been photographed ONLY



#283 - 31 Thompson Closing Wheels (PD1284)

31 Thompson Closing Wheels (PD1284). Notes: Item Location: Fort Pierre, SD 57532 Equipment Sold "AS IS, WHERE IS": All equipment/property is sold "AS IS, WHERE IS" with no warranty or guarantees, expressed or implied, No operational assessments have been made by DPA Auctions on this item, it has been photographed ONLY



#284 - 9 Precision Planting Row Unit Modules (PD1292)

9 Precision Planting Row Unit Modules (PD1292). Notes: Item Location: Fort Pierre, SD 57532 Equipment Sold "AS IS, WHERE IS": All equipment/property is sold "AS IS, WHERE IS" with no warranty or guarantees, expressed or implied, No operational assessments have been made by DPA Auctions on this item, it has been photographed ONLY



#285 - 8 John Deere Pneumatic Downforce Bags (PD1293)

8 John Deere Pneumatic Downforce Bags (PD1293), off of 1770. Notes: Item Location: Fort Pierre, SD 57532 Equipment Sold "AS IS, WHERE IS": All equipment/property is sold "AS IS, WHERE IS" with no warranty or guarantees, expressed or implied, No operational assessments have been made by DPA Auctions on this item, it has been photographed ONLY



#286 - 8 John Deere Pneumatic Downforce Bags (PD1285)

8 John Deere Pneumatic Downforce Bags (PD1285), off of 1770. Notes: Item Location: Fort Pierre, SD 57532 Equipment Sold "AS IS, WHERE IS": All equipment/property is sold "AS IS, WHERE IS" with no warranty or guarantees, expressed or implied, No operational assessments have been made by DPA Auctions on this item, it has been photographed ONLY



#287 - Exapta Thompson Wheel (PD1288)

Exapta Thompson Wheel (PD1288), for John Deere 1890 air seeder. Notes: Item Location: Fort Pierre, SD 57532 Equipment Sold "AS IS, WHERE IS": All equipment/property is sold "AS IS, WHERE IS" with no warranty or guarantees, expressed or implied, No operational assessments have been made by DPA Auctions on this item, it has been photographed ONLY



#288 - 8 John Deere Pneumatic Downforce Bags (PD1294)

8 John Deere Pneumatic Downforce Bags (PD1294), off of 1770. Notes: Item Location: Fort Pierre, SD 57532 Equipment Sold "AS IS, WHERE IS": All equipment/property is sold "AS IS, WHERE IS" with no warranty or guarantees, expressed or implied, No operational assessments have been made by DPA Auctions on this item, it has been photographed ONLY



#289 - Martin Fertilizer Coulters (PD1289)

Martin Fertilizer Coulters (PD1289). Notes: Item Location: Fort Pierre, SD 57532 Equipment Sold "AS IS, WHERE IS": All equipment/property is sold "AS IS, WHERE IS" with no warranty or guarantees, expressed or implied, No operational assessments have been made by DPA Auctions on this item, it has been photographed ONLY



#290 - 12 Keeton Universal Brackets (PD1280)

12 Keeton Universal Brackets (PD1280), includes low profile liquid keetons. Notes: Item Location: Fort Pierre, SD 57532 Equipment Sold "AS IS, WHERE IS": All equipment/property is sold "AS IS, WHERE IS" with no warranty or guarantees, expressed or implied, No operational assessments have been made by DPA Auctions on this item, it has been photographed ONLY



#291 - 2 Sprayer Specialty Electric Fertilizer Pump Systems (PD1282)

2 Sprayer Specialty Electric Fertilizer Pump Systems (PD1282), each with 16 row manifold ports, fertilizer lines, 16 totally tubular seed tube guards and fertilizer tubes. Notes: Item Location: Fort Pierre, SD 57532 Equipment Sold "AS IS, WHERE IS": All equipment/property is sold "AS IS, WHERE IS" with no warranty or guarantees, expressed or implied, No operational assessments have been made by DPA Auctions on this item, it has been photographed ONLY



#292 - Generac 25 KW Propane Generator (PZ1444)

Generac 25 KW Propane Generator (PZ1444), Generac model 00996-0 commercial grade propane generator, 3600 RPM, Mitsubishi Industrial engine, block heater, liquid cooled, built in 200 Amp automatic transfer switch, single phase 120/240V, 104 amps, weather proof enclosure, 54"Lx40"Wx54"T, 850 Lbs, shows 314 hours. Notes: Item Location: Springfield, IL 62703 Equipment Sold "AS IS, WHERE IS": All equipment/property is sold "AS IS, WHERE IS" with no warranty or guarantees, expressed or implied, No operational assessments have been made by DPA Auctions on this item, it has been photographed ONLY



#293 - Generac 25 KW Propane Generator (PZ1445)

Generac 25 KW Propane Generator (PZ1445), Generac model 00996-0 commercial grade propane generator, 3600 RPM, Mitsubishi Industrial engine, block heater, liquid cooled, built in 200 Amp automatic transfer switch, single phase 120/240V, 104 amps, weather proof enclosure, 54"Lx40"Wx54"T, 850 Lbs, shows 465 hours. Notes: Item Location: Springfield, IL 62703 Equipment Sold "AS IS, WHERE IS": All equipment/property is sold "AS IS, WHERE IS" with no warranty or guarantees, expressed or implied, No operational assessments have been made by DPA Auctions on this item, it has been photographed ONLY



#294 - (8) Eight Steam Heat Registers (AL641)

(8) Eight Steam Heat Registers (AL641), eight steam heat registers taken out of the house last year in working condition. Notes: Item Location: Aplington, IA 50604 Equipment Sold "AS IS, WHERE IS": All equipment/property is sold "AS IS, WHERE IS" with no warranty or guarantees, expressed or implied, No operational assessments have been made by DPA Auctions on this item, it has been photographed ONLY



#295 - Heavy Duty Shelving (AL642)

Heavy Duty Shelving (AL642), four heavy duty shelves, 18 legs and bucket of hooks. Notes: Item Location: Aplington, IA 50604 Equipment Sold "AS IS, WHERE IS": All equipment/property is sold "AS IS, WHERE IS" with no warranty or guarantees, expressed or implied, No operational assessments have been made by DPA Auctions on this item, it has been photographed ONLY



#296 - Raymond 102T-F45L Pallet Jack (PD1310)

Raymond 102T-F45L Pallet Jack (PD1310), 24 V, 27-48 inches, everything works and operates on this unit, all covers in good shape, paint in very good condition, all handle controls are working properly, very good shape. Notes: Item Location: Saint Louis, MO 63132 Equipment Sold "AS IS, WHERE IS": All equipment/property is sold "AS IS, WHERE IS" with no warranty or guarantees, expressed or implied, No operational assessments have been made by DPA Auctions on this item, it has been photographed ONLY



#297 - 1993 Crown 15MT Lift (PD1307)

1993 Crown 15MT Lift (PD1307), 12/24v system, 2 stage mast - 86-130 inches, outriggers 38 1/2 inches inside to inside, 44 inches outside to outside, drive system and hydraulics all work on this unit, all controls and buttons operate as they should. Notes: Item Location: Saint Louis, MO 63132 Equipment Sold "AS IS, WHERE IS": All equipment/property is sold "AS IS, WHERE IS" with no warranty or guarantees, expressed or implied, No operational assessments have been made by DPA Auctions on this item, it has been photographed ONLY



#298 - 16 Standard Seed Corn Plates (PD1306)

16 Standard Seed Corn Plates (PD1306), for a John Deere Vacuum planter, part #BA29793. Notes: Item Location: Saginaw, MI 48601 Equipment Sold "AS IS, WHERE IS": All equipment/property is sold "AS IS, WHERE IS" with no warranty or guarantees, expressed or implied, No operational assessments have been made by DPA Auctions on this item, it has been photographed ONLY



#299 - 16 Standard Seed Corn Plates (PD1305)

16 Standard Seed Corn Plates (PD1305), for a John Deere Vacuum planter, part #BA29793. Notes: Item Location: Saginaw, MI 48601 Equipment Sold "AS IS, WHERE IS": All equipment/property is sold "AS IS, WHERE IS" with no warranty or guarantees, expressed or implied, No operational assessments have been made by DPA Auctions on this item, it has been photographed ONLY



#300 - 16 Small Seed Corn Plates (PD1304)

16 Small Seed Corn Plates (PD1304), for John Deere Vacuum planter, part #BA24605. Notes: Item Location: Saginaw, MI 48601 Equipment Sold "AS IS, WHERE IS": All equipment/property is sold "AS IS, WHERE IS" with no warranty or guarantees, expressed or implied, No operational assessments have been made by DPA Auctions on this item, it has been photographed ONLY



#301 - Complete Lead Shank (PD1300)

Complete Lead Shank (PD1300), for a Case IH 730C ripper. Notes: Item Location: Saginaw, MI 48601 Equipment Sold "AS IS, WHERE IS": All equipment/property is sold "AS IS, WHERE IS" with no warranty or guarantees, expressed or implied, No operational assessments have been made by DPA Auctions on this item, it has been photographed ONLY



#302 - 2 Firestone 710/70R-38 Tires and Rims (PD1296)

2 Firestone 710/70R-38 Tires and Rims (PD1296), used on a John Deere 4710 sprayer, 10 bolt hub, excellent condition. Notes: Item Location: Saginaw, MI 48601 Equipment Sold "AS IS, WHERE IS": All equipment/property is sold "AS IS, WHERE IS" with no warranty or guarantees, expressed or implied, No operational assessments have been made by DPA Auctions on this item, it has been photographed ONLY



#303 - 2 Firestone 710/70R-38 Tires and Rims (PD1299)

2 Firestone 710/70R-38 Tires and Rims (PD1299), used on a John Deere 4710 Sprayer, 10 bolt hub, excellent condition. Notes: Item Location: Saginaw, MI 48601 Equipment Sold "AS IS, WHERE IS": All equipment/property is sold "AS IS, WHERE IS" with no warranty or guarantees, expressed or implied, No operational assessments have been made by DPA Auctions on this item, it has been photographed ONLY



#304 - 12 Narrow Bogie Wheels (PD1301)

12 Narrow Bogie Wheels (PD1301), for a Cat Challenger 35, 45, or 55, excellent shape, took off because wide belts and bogie wheels were put on tractor. Notes: Item Location: Saginaw, MI 48601 Equipment Sold "AS IS, WHERE IS": All equipment/property is sold "AS IS, WHERE IS" with no warranty or guarantees, expressed or implied, No operational assessments have been made by DPA Auctions on this item, it has been photographed ONLY



#305 - 2 Camoplast Extreme Service 16 Inch Tracks (PD1295)

2 Camoplast Extreme Service 16 Inch Tracks (PD1295), fit John Deere 8RT series tractor, have 65% tread, guide lugs in excellent shape, lugs are 2 1/4 inches deep, right track on the outside has some damage to outer inch about 20 inches along the belt, about an inch thick of the belt on the outer edge was sliced and exposed one of the cables, no damage to the cable, part #R266188. Notes: Item Location: Saginaw, MI 48601 Equipment Sold "AS IS, WHERE IS": All equipment/property is sold "AS IS, WHERE IS" with no warranty or guarantees, expressed or implied, No operational assessments have been made by DPA Auctions on this item, it has been photographed ONLY



#306 - Dalton Running Gear (CP1018)

Dalton Running Gear (CP1018), Dalton 5th wheel running gear, 12.5L-15 flotation tires. Notes: Item Location: Waterloo, IL 62298 Equipment Sold "AS IS, WHERE IS": All equipment/property is sold "AS IS, WHERE IS" with no warranty or guarantees, expressed or implied, No operational assessments have been made by DPA Auctions on this item, it has been photographed ONLY



#307 - Ag Systems Running Gear (CP1019)

Ag Systems Running Gear (CP1019), Ag Systems model AG106, 5th wheel running gear, flotation tires. Notes: Item Location: Waterloo, IL 62298 Equipment Sold "AS IS, WHERE IS": All equipment/property is sold "AS IS, WHERE IS" with no warranty or guarantees, expressed or implied, No operational assessments have been made by DPA Auctions on this item, it has been photographed ONLY



#308 - Running Gear (CP1031)

Running Gear (CP1031), 5th wheel running gear, 11L-15 flotation tires. Notes: Item Location: Red Bud, IL 62278 Equipment Sold "AS IS, WHERE IS": All equipment/property is sold "AS IS, WHERE IS" with no warranty or guarantees, expressed or implied, No operational assessments have been made by DPA Auctions on this item, it has been photographed ONLY



#309 - Running Gear (CP1029)

Running Gear (CP1029), 5th wheel running gear, 11L-15 flotation tires. Notes: Item Location: Red Bud, IL 62278 Equipment Sold "AS IS, WHERE IS": All equipment/property is sold "AS IS, WHERE IS" with no warranty or guarantees, expressed or implied, No operational assessments have been made by DPA Auctions on this item, it has been photographed ONLY



#310 - Running Gear (CP1032, 227)

Running Gear (CP1032, 227), 5th wheel running gear, 11L-15 flotation tires. Notes: Item Location: Red Bud, IL 62278 Equipment Sold "AS IS, WHERE IS": All equipment/property is sold "AS IS, WHERE IS" with no warranty or guarantees, expressed or implied, No operational assessments have been made by DPA Auctions on this item, it has been photographed ONLY



#311 - Running Gear (CP1034, Unit 219)

Running Gear (CP1034, Unit 219), 5th wheel running gear, 11L-15 flotation tires. Notes: Item Location: Red Bud, IL 62278 Equipment Sold "AS IS, WHERE IS": All equipment/property is sold "AS IS, WHERE IS" with no warranty or guarantees, expressed or implied, No operational assessments have been made by DPA Auctions on this item, it has been photographed ONLY



#312 - Inserve Tank (CP1044)

Inserve Tank (CP1044), 250 gallon stainless steel inserve tank, did not pass pressure test. Notes: Item Location: Nashville, IL 62263 Equipment Sold "AS IS, WHERE IS": All equipment/property is sold "AS IS, WHERE IS" with no warranty or guarantees, expressed or implied, No operational assessments have been made by DPA Auctions on this item, it has been photographed ONLY



#313 - Running Gear (CP1046)

Running Gear (CP1046), 5th wheel running gear, 12.5L-15 flotation tires. Notes: Item Location: Nashville, IL 62263 Equipment Sold "AS IS, WHERE IS": All equipment/property is sold "AS IS, WHERE IS" with no warranty or guarantees, expressed or implied, No operational assessments have been made by DPA Auctions on this item, it has been photographed ONLY



#314 - Running Gear (CP1047)

Running Gear (CP1047), 5th wheel running gear, 11L-15 flotation tires. Notes: Item Location: Nashville, IL 62263 Equipment Sold "AS IS, WHERE IS": All equipment/property is sold "AS IS, WHERE IS" with no warranty or guarantees, expressed or implied, No operational assessments have been made by DPA Auctions on this item, it has been photographed ONLY



#315 - Running Gear (CP1049)

Running Gear (CP1049), 5th wheel running gear, flotation tires. Notes: Item Location: Nashville, IL 62263 Equipment Sold "AS IS, WHERE IS": All equipment/property is sold "AS IS, WHERE IS" with no warranty or guarantees, expressed or implied, No operational assessments have been made by DPA Auctions on this item, it has been photographed ONLY



#316 - Running Gear (CP1050)

Running Gear (CP1050), 5th wheel running gear, 12.5-15 flotation tires. Notes: Item Location: Nashville, IL 62263 Equipment Sold "AS IS, WHERE IS": All equipment/property is sold "AS IS, WHERE IS" with no warranty or guarantees, expressed or implied, No operational assessments have been made by DPA Auctions on this item, it has been photographed ONLY



#317 - Running Gear (CP1051)

Running Gear (CP1051), 5th wheel running gear, flotation tires. Notes: Item Location: Nashville, IL 62263 Equipment Sold "AS IS, WHERE IS": All equipment/property is sold "AS IS, WHERE IS" with no warranty or guarantees, expressed or implied, No operational assessments have been made by DPA Auctions on this item, it has been photographed ONLY



#318 - Running Gear (CP1052)

Running Gear (CP1052), 5th wheel running gear, flotation tires. Notes: Item Location: Nashville, IL 62263 Equipment Sold "AS IS, WHERE IS": All equipment/property is sold "AS IS, WHERE IS" with no warranty or guarantees, expressed or implied, No operational assessments have been made by DPA Auctions on this item, it has been photographed ONLY



#319 - Running Gear (CP1054)

Running Gear (CP1054), 5th wheel running gear, flotation tires. Notes: Item Location: Woodlawn, IL 62898 Equipment Sold "AS IS, WHERE IS": All equipment/property is sold "AS IS, WHERE IS" with no warranty or guarantees, expressed or implied, No operational assessments have been made by DPA Auctions on this item, it has been photographed ONLY



#320 - Running Gear (CP1055)

Running Gear (CP1055), 5th wheel running gear, 11L-15 flotation tires. Notes: Item Location: Woodlawn, IL 62898 Equipment Sold "AS IS, WHERE IS": All equipment/property is sold "AS IS, WHERE IS" with no warranty or guarantees, expressed or implied, No operational assessments have been made by DPA Auctions on this item, it has been photographed ONLY



#321 - Running Gear (CP1056)

Running Gear (CP1056), 5th wheel running gear, flotation tires. Notes: Item Location: Woodlawn, IL 62898 Equipment Sold "AS IS, WHERE IS": All equipment/property is sold "AS IS, WHERE IS" with no warranty or guarantees, expressed or implied, No operational assessments have been made by DPA Auctions on this item, it has been photographed ONLY



#322 - Running Gear (CP1057)

Running Gear (CP1057), 5th wheel running gear, flotation tires. Notes: Item Location: Woodlawn, IL 62898 Equipment Sold "AS IS, WHERE IS": All equipment/property is sold "AS IS, WHERE IS" with no warranty or guarantees, expressed or implied, No operational assessments have been made by DPA Auctions on this item, it has been photographed ONLY



#323 - Running Gear (CP1060)

Running Gear (CP1060), 5th wheel running gear, flotation tires. Notes: Item Location: Woodlawn, IL 62898 Equipment Sold "AS IS, WHERE IS": All equipment/property is sold "AS IS, WHERE IS" with no warranty or guarantees, expressed or implied, No operational assessments have been made by DPA Auctions on this item, it has been photographed ONLY



#324 - Running Gear (CP1061)

Running Gear (CP1061), 5th wheel running gear, flotation tires. Notes: Item Location: Woodlawn, IL 62898 Equipment Sold "AS IS, WHERE IS": All equipment/property is sold "AS IS, WHERE IS" with no warranty or guarantees, expressed or implied, No operational assessments have been made by DPA Auctions on this item, it has been photographed ONLY



#325 - Running Gear (CP1059)

Running Gear (CP1059), 5th wheel running gear, floatation tires. Notes: Item Location: Woodlawn, IL 62898 Equipment Sold "AS IS, WHERE IS": All equipment/property is sold "AS IS, WHERE IS" with no warranty or guarantees, expressed or implied, No operational assessments have been made by DPA Auctions on this item, it has been photographed ONLY



#326 - Running Gear (CP1063)

Running Gear (CP1063), 5th wheel running gear, floatation tires. Notes: Item Location: Woodlawn, IL 62898 Equipment Sold "AS IS, WHERE IS": All equipment/property is sold "AS IS, WHERE IS" with no warranty or guarantees, expressed or implied, No operational assessments have been made by DPA Auctions on this item, it has been photographed ONLY



#327 - Running Gear (CP1064)

Running Gear (CP1064), 5th wheel running gear, floatation tires. Notes: Item Location: Woodlawn, IL 62898 Equipment Sold "AS IS, WHERE IS": All equipment/property is sold "AS IS, WHERE IS" with no warranty or guarantees, expressed or implied, No operational assessments have been made by DPA Auctions on this item, it has been photographed ONLY



#328 - Running Gear (CP1062)

Running Gear (CP1062), 5th wheel running gear, floatation tires. Notes: Item Location: Woodlawn, IL 62898 Equipment Sold "AS IS, WHERE IS": All equipment/property is sold "AS IS, WHERE IS" with no warranty or guarantees, expressed or implied, No operational assessments have been made by DPA Auctions on this item, it has been photographed ONLY



#329 - Running Gear (CP1065)

Running Gear (CP1065), 5th wheel running gear, floatation tires. Notes: Item Location: Woodlawn, IL 62898 Equipment Sold "AS IS, WHERE IS": All equipment/property is sold "AS IS, WHERE IS" with no warranty or guarantees, expressed or implied, No operational assessments have been made by DPA Auctions on this item, it has been photographed ONLY



#330 - Running Gear (CP1066)

Running Gear (CP1066), 5th wheel running gear, floatation tires. Notes: Item Location: Woodlawn, IL 62898 Equipment Sold "AS IS, WHERE IS": All equipment/property is sold "AS IS, WHERE IS" with no warranty or guarantees, expressed or implied, No operational assessments have been made by DPA Auctions on this item, it has been photographed ONLY



#331 - Running Gear (CP1067)

Running Gear (CP1067), 5th wheel running gear, floatation tires. Notes: Item Location: Woodlawn, IL 62898 Equipment Sold "AS IS, WHERE IS": All equipment/property is sold "AS IS, WHERE IS" with no warranty or guarantees, expressed or implied, No operational assessments have been made by DPA Auctions on this item, it has been photographed ONLY



#332 - Running Gear (CP1068)

Running Gear (CP1068), 5th wheel running gear, floatation tires. Notes: Item Location: Woodlawn, IL 62898 Equipment Sold "AS IS, WHERE IS": All equipment/property is sold "AS IS, WHERE IS" with no warranty or guarantees, expressed or implied, No operational assessments have been made by DPA Auctions on this item, it has been photographed ONLY



#333 - Running Gear (CP1069)

Running Gear (CP1069), 5th wheel running gear, floatation tires. Notes: Item Location: Woodlawn, IL 62898 Equipment Sold "AS IS, WHERE IS": All equipment/property is sold "AS IS, WHERE IS" with no warranty or guarantees, expressed or implied, No operational assessments have been made by DPA Auctions on this item, it has been photographed ONLY



#334 - Running Gear (CP1070)

Running Gear (CP1070), 5th wheel running gear, floatation tires. Notes: Item Location: Woodlawn, IL 62898 Equipment Sold "AS IS, WHERE IS": All equipment/property is sold "AS IS, WHERE IS" with no warranty or guarantees, expressed or implied, No operational assessments have been made by DPA Auctions on this item, it has been photographed ONLY



#335 - Running Gear (CP1071)

Running Gear (CP1071), 5th wheel running gear, floatation tires. Notes: Item Location: Woodlawn, IL 62898 Equipment Sold "AS IS, WHERE IS": All equipment/property is sold "AS IS, WHERE IS" with no warranty or guarantees, expressed or implied, No operational assessments have been made by DPA Auctions on this item, it has been photographed ONLY

