

## Auction catalog

<b>Title</b>	Online Auction - March 5, 2019 10AM Central
<b>Description</b>	The following line of Fertilizer, Farm Implement, Truck, Trailer & Construction Equipment will be sold online with the bidding ending on March 5, 2019. Location of the equipment is given. Bidding within the last minute before the closing of a lot will extend the bidding time by an additional minute. Be prepared to bid accordingly. For more information, contact Del Peterson & Associates: 419 West Judy Drive Fremont NE, 68025 Phone: 800-492-9090 or 402-721-4388 Fax: 402-721-4583 E-mail: auction@delpeterson.com
<b>Date</b>	Tue, Mar 5, 2019
<b>Starts at</b>	10:00 AM
<b>Address</b>	PO Box 654, Fremont, NE 68026 USA
<b>Categories</b>	

### #1 - Air Flow Part (PZ1292)

Air Flow Part (PZ1292), Air Flow part. Notes: Item Location: Baileyville, IL 61007 Equipment Sold "AS IS, WHERE IS": All equipment/property is sold "AS IS, WHERE IS" with no warranty or guarantees, expressed or implied, No operational assessments have been made by DPA Auctions on this item, it has been photographed ONLY.



### #2 - Pallet of Parts (PZ1298)

Pallet of Parts (PZ1298), Pallet of spreader chains, flaps. Notes: Item Location: Baileyville, IL 61007 Equipment Sold "AS IS, WHERE IS": All equipment/property is sold "AS IS, WHERE IS" with no warranty or guarantees, expressed or implied, No operational assessments have been made by DPA Auctions on this item, it has been photographed ONLY.



### #3 - Pallet Air Flow Parts (PZ1299)

Pallet Air Flow Parts (PZ1299), Pallet of air flow parts. Notes: Item Location: Baileyville, IL 61007 Equipment Sold "AS IS, WHERE IS": All equipment/property is sold "AS IS, WHERE IS" with no warranty or guarantees, expressed or implied, No operational assessments have been made by DPA Auctions on this item, it has been photographed ONLY.



### #4 - Dodge Drives (PZ1300)

Dodge Drives (PZ1300), 2 - Dodge TXT6 drives. Notes: Item Location: Baileyville, IL 61007 Equipment Sold "AS IS, WHERE IS": All equipment/property is sold "AS IS, WHERE IS" with no warranty or guarantees, expressed or implied, No operational assessments have been made by DPA Auctions on this item, it has been photographed ONLY.



### #5 - Floater Parts (PZ1297)

Floater Parts (PZ1297), Pallet of liquid floater parts. Notes: Item Location: Baileyville, IL 61007 Equipment Sold "AS IS, WHERE IS": All equipment/property is sold "AS IS, WHERE IS" with no warranty or guarantees, expressed or implied, No operational assessments have been made by DPA Auctions on this item, it has been photographed ONLY.



### #6 - Miller Welder (PZ1294)

Miller Welder (PZ1294) Miller CP-200 welder, Millermatic 30E. Notes: Please check with seller on working condition. Item Location: Baileyville, IL 61007 Equipment Sold "AS IS, WHERE IS": All equipment/property is sold "AS IS, WHERE IS" with no warranty or guarantees, expressed or implied, No operational assessments have been made by DPA Auctions on this item, it has been photographed ONLY.



### #7 - Pallet Tires (PZ1291)

Pallet Tires (PZ1291), Pallet of tires, 21x12-8, 22.5x10.00-8, 4.10/3.50-6, 4.00-9, 5.30/4.50-6, 2 - 12.5x10.5 rims. Notes: Item Location: Baileyville, IL 61007 Equipment Sold "AS IS, WHERE IS": All equipment/property is sold "AS IS, WHERE IS" with no warranty or guarantees, expressed or implied, No operational assessments have been made by DPA Auctions on this item, it has been photographed ONLY.



## #8 - Pallet of Rims (PZ1296)

Pallet of Rims (PZ1296), Pallet of assorted rims. Notes: Item Location: Baileyville, IL 61007 Equipment Sold "AS IS, WHERE IS": All equipment/property is sold "AS IS, WHERE IS" with no warranty or guarantees, expressed or implied, No operational assessments have been made by DPA Auctions on this item, it has been photographed ONLY.



## #9 - Generac 15 KW Propane Generator (PZ1256)

Generac 15 KW Propane Generator (PZ1256), Generac model 00995-1 commercial grade propane generator, 1800 RPM, Mitsubishi Industrial engine, block heater, liquid cooled, built in 200 Amp automatic transfer switch, single phase 120/240V, 62.5 amps, weather proof enclosure, 50"Lx40"Wx56"T, 850 lbs., shows 207 hours. Notes: Item Location: Springfield, IL 62703 Equipment Sold "AS IS, WHERE IS": All equipment/property is sold "AS IS, WHERE IS" with no warranty or guarantees, expressed or implied, No operational assessments have been made by DPA Auctions on this item, it has been photographed ONLY.



## #10 - Generac 15 KW Propane Generator (PZ1257)

Generac 15 KW Propane Generator (PZ1257), Generac model 0009951 commercial grade propane generator, 1800 RPM, Mitsubishi Industrial engine, block heater, liquid cooled, built in 200 Amp automatic transfer switch, single phase 120/240V, 62.5 amps, weather proof enclosure, 50"Lx40"Wx56"T, 850 lbs., shows 378 hours. Notes: Item Location: Springfield, IL 62703 Equipment Sold "AS IS, WHERE IS": All equipment/property is sold "AS IS, WHERE IS" with no warranty or guarantees, expressed or implied, No operational assessments have been made by DPA Auctions on this item, it has been photographed ONLY.



## #11 - 2005 RoGator 1064 Sprayer (PZ1253)

2005 RoGator 1064 Sprayer (PZ1253), Cat 3126 diesel engine, hydrostatic transmission, air conditioning, heat, Am/Fm radio, 1000 gallon stainless steel liquid system, 100' boom, top poly rinse tank, 380/90R46 tires, Raven SCS661 monitor, shows 4,104 hours. Notes: Item Location: Dothan, AL 36303 Equipment Sold "AS IS, WHERE IS": All equipment/property is sold "AS IS, WHERE IS" with no warranty or guarantees, expressed or implied, No operational assessments have been made by DPA Auctions on this item, it has been photographed ONLY.



## #12 - 454 Irrigation Engine (ED865)

454 Irrigation Engine (ED865), propane engine, everything works, clutch, gauges, has newer radiator and 6 blade fan. Notes: Item Location: Petersburg, NE 68652 Equipment Sold "AS IS, WHERE IS": All equipment/property is sold "AS IS, WHERE IS" with no warranty or guarantees, expressed or implied, No operational assessments have been made by DPA Auctions on this item, it has been photographed ONLY.



## #13 - 454 Propane Irrigation Engine (ED866)

454 Propane Irrigation Engine (ED866), propane engine on cart with generator, everything works, gauge, clutch, generator, newer radiator and 6 blade fan. Notes: Item Location: Petersburg, NE 68652 Equipment Sold "AS IS, WHERE IS": All equipment/property is sold "AS IS, WHERE IS" with no warranty or guarantees, expressed or implied, No operational assessments have been made by DPA Auctions on this item, it has been photographed ONLY.



## #14 - Yamaha Kodiak 4 Wheeler (PZ1293)

Yamaha Kodiak 4 Wheeler (PZ1293), Yamaha Kodiak 4 wheeler, 4x4, gas engine, automatic transmission, AT25x8-12 front tires, 25x10.00-12 rear tires. Notes: No front drive shaft, No brakes. Item Location: Baileyville, IL 61007 Equipment Sold "AS IS, WHERE IS": All equipment/property is sold "AS IS, WHERE IS" with no warranty or guarantees, expressed or implied, No operational assessments have been made by DPA Auctions on this item, it has been photographed ONLY.



## #15 - 2010 John Deere 24 Row 1770NT MultiHybrid Planter (PD1216)

2010 John Deere 24 Row 1770NT MultiHybrid Planter (PD1216), Vset select multihybrid by precision planting, Deltaforce hydraulic downforce by precision planting, Vdrive electric drive by Precision planting, Martin BD1360 floating trashwhippers with Precision planting cleansweep control, 500 gallon liquid fertilizer system, Flowsense liquid monitoring by Precision planting, Furrowjet liquid fertilizer placement by Precision planting, brand new opener blades, 20/20 Gen 2 monitor by Precision planting, brand new gauge wheel arms and depth mustaches in 2018, Precision planting wave vision seed tube sensors, Dawn curvetine closing wheels, John Deere rubber closing wheels, field ready. Notes: Item Location: Fort Pierre, SD 57532 Equipment Sold "AS IS, WHERE IS": All equipment/property is sold "AS IS, WHERE IS" with no warranty or guarantees, expressed or implied, No operational assessments have been made by DPA Auctions on this item, it has been photographed ONLY.



## #16 - 2007 CaseIH SPX3310 Sprayer (PZ1309)

2007 CaseIH SPX3310 Sprayer (PZ1309), diesel engine, hydrostatic transmission, air conditioning, heat, Am/Fm cassette radio, 1000 gallon stainless steel liquid system, 60/90' boom, 20/30" spacing, foam marker, top poly rinse tank, Firestone 380/90R46 tires @ 70%, Raven Starlink GPS, Raven SmarTrax, lightbar, Viper Pro monitor, Phoenix 200 receiver, shows 6052 hours. Notes: 2,000 hours on New engine, hydro and 3 wheel motors replaced in the last 2 years. Item Location: Winamac, IN 46996 Equipment Sold "AS IS, WHERE IS": All equipment/property is sold "AS IS, WHERE IS" with no warranty or guarantees, expressed or implied, No operational assessments have been made by DPA Auctions on this item, it has been photographed ONLY.



## #17 - Willmar Wrangler Loader (PZ1289)

Willmar Wrangler Loader (PZ1289), diesel engine, hydrostatic transmission, bucket/forks, 31x15.50-15 tires. Notes: No hydraulics. Item Location: Baileyville, IL 61007 Equipment Sold "AS IS, WHERE IS": All equipment/property is sold "AS IS, WHERE IS" with no warranty or guarantees, expressed or implied, No operational assessments have been made by DPA Auctions on this item, it has been photographed ONLY.



## #18 - Super Structure (PZ1302)

Super Structure (PZ1302), Super structure. Notes: Item Location: Baileyville, IL 61007 Equipment Sold "AS IS, WHERE IS": All equipment/property is sold "AS IS, WHERE IS" with no warranty or guarantees, expressed or implied, No operational assessments have been made by DPA Auctions on this item, it has been photographed ONLY.



## #19 - New Leader MultApplier Insert (PZ1314)

New Leader MultApplier Insert (PZ1314), New Leader 5' MultApplier insert for a New Leader L3220 G4 bed. Notes: Item Location: Wellman, IA 52356 Equipment Sold "AS IS, WHERE IS": All equipment/property is sold "AS IS, WHERE IS" with no warranty or guarantees, expressed or implied, No operational assessments have been made by DPA Auctions on this item, it has been photographed ONLY.



## #20 - 2013 Twin Bin Air Spreader (PZ1315)

2013 Twin Bin Air Spreader (PZ1315), 2013 Soilection twin bin dry air flow system, 70' boom, poly liquid tank, came off 2013 Terra Gator with 600 hours when the system was removed, it ran with a Viper Pro controller and the system harnesses and nodes are still with it. Notes: Item Location: Wellman, IA 52356 Equipment Sold "AS IS, WHERE IS": All equipment/property is sold "AS IS, WHERE IS" with no warranty or guarantees, expressed or implied, No operational assessments have been made by DPA Auctions on this item, it has been photographed ONLY.



## #21 - 2008 RoGator 1074 Sprayer (NP7805)

2008 RoGator 1074 Sprayer (NP7805), Cat diesel engine, hydrostatic transmission, heat, air conditioning, Am/Fm CD radio, cab ride control, 1,080 gallon stainless steel liquid system (S/N LAGCA1074JNT001003), 90' boom, 5-way nozzle bodies, top poly rinse tank, 30.5 stainless steel foam marker tank, poly chemical inductor tank, 380/90R46 tires, lightbar, Raven SmarTrax, Raven Envizio, shows 4,757 hours. Notes: (2) NEW injectors just put in this machine. Item Location: Holland, KS 67410 Equipment Sold "AS IS, WHERE IS": All equipment/property is sold "AS IS, WHERE IS" with no warranty or guarantees, expressed or implied, No operational assessments have been made by DPA Auctions on this item, it has been photographed ONLY.



## #22 - NH3 Tank (NP7790)

NH3 Tank (NP7790), 1,000 gallon capacity, top front fill, water tank, 4 wheel running gear, 31x10.50R15 tires (1 flat tire), data plate, Tank #2. Notes: 1 flat tire. Item Location: Galva, KS 67443 Equipment Sold "AS IS, WHERE IS": All equipment/property is sold "AS IS, WHERE IS" with no warranty or guarantees, expressed or implied, No operational assessments have been made by DPA Auctions on this item, it has been photographed ONLY.



## #23 - NH3 Tank (NP7791, Unit 12688)

NH3 Tank (NP7791, Unit 12688), 1,000 gallon capacity, top front fill, water tank, 4 wheel running gear, 31x10.50R15 tires, data plate, Tank #1. Notes: Item Location: Galva, KS 67443 Equipment Sold "AS IS, WHERE IS": All equipment/property is sold "AS IS, WHERE IS" with no warranty or guarantees, expressed or implied, No operational assessments have been made by DPA Auctions on this item, it has been photographed ONLY.



## #24 - NH3 Tank (NP7792, Unit 12675)

NH3 Tank (NP7792, Unit 12675), 1,000 gallon capacity, top front fill, water tank, 4 wheel running gear, 11L-15 tires, data plate, Tank #35. Notes: Item Location: Galva, KS 67443 Equipment Sold "AS IS, WHERE IS": All equipment/property is sold "AS IS, WHERE IS" with no warranty or guarantees, expressed or implied, No operational assessments have been made by DPA Auctions on this item, it has been photographed ONLY.



## #25 - NH3 Tank (NP7793, Unit 12674)

NH3 Tank (NP7793, Unit 12674), 1,000 gallon capacity, top front fill, water tank, 4 wheel running gear, 12.5L-15 tires, data plate, Tank #18. Notes: Item Location: Galva, KS 67443 Equipment Sold "AS IS, WHERE IS": All equipment/property is sold "AS IS, WHERE IS" with no warranty or guarantees, expressed or implied, No operational assessments have been made by DPA Auctions on this item, it has been photographed ONLY.



## #26 - 2003 SRES Advanced Research Planter (PZ1270)

2003 SRES Advanced Research Planter (PZ1270), 8 row, 30" spacing, NO plot tripping mechanism, buyer will need to retrofit with their own tripping system. Notes: Item Location: Huxley, IA 50124 Equipment Sold "AS IS, WHERE IS": All equipment/property is sold "AS IS, WHERE IS" with no warranty or guarantees, expressed or implied, No operational assessments have been made by DPA Auctions on this item, it has been photographed ONLY.



## #27 - 2010 CaseIH 3020 Titan Combo Floater (PZ1280, Unit 17955)

2010 CaseIH 3020 Titan Combo Floater (PZ1280, Unit 17955), diesel engine, Allison automatic transmission, air conditioning, heat, Am/Fm CD stereo, New Leader L4000 G4-14 stainless steel dry spreader box (S/N 131183), twin spinner, all hydraulic, New Leader MultApplier insert (S/N 131224), w/ Case 1,800 gallon stainless steel liquid system, 60/85' boom, top mount rinse tank, foam marker, Michelin 1000/50R25 tires, Cab Camera, Raven monitor, SmarTrax 600ic lightbar, shows 3684 hours. Notes: New front tire and main front bearings fall 2017. New rear tires fall of 2015. New box belts and bearings fall 2016. Item Location: Reinbeck, IA 50669 Equipment Sold "AS IS, WHERE IS": All equipment/property is sold "AS IS, WHERE IS" with no warranty or guarantees, expressed or implied, No operational assessments have been made by DPA Auctions on this item, it has been photographed ONLY.



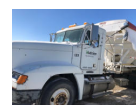
## #28 - 1995 John Deere 6400 Tractor (PZ1269)

1995 John Deere 6400 Tractor (PZ1269), John Deere diesel engine, power quad transmission, cab, heat, air conditioning, Am/Fm radio, PTO, 2 port hydraulics, 3 point, 10.00-16 front tires, 420/85R38 rear tires, approx. 3,617 hours. Notes: 1 SCV won't run a hydraulic motor. Fire Extinguisher DOES NOT SELL with this tractor. Item Location: Huxley, IA 50124 Equipment Sold "AS IS, WHERE IS": All equipment/property is sold "AS IS, WHERE IS" with no warranty or guarantees, expressed or implied, No operational assessments have been made by DPA Auctions on this item, it has been photographed ONLY.



## #29 - 1996 Freighliner Dry Tender Truck (PZ1311, Unit 11312)

1996 Freighliner Dry Tender Truck (PZ1311, Unit 11312), Detroit Series 60 diesel engine, 10 speed transmission, air conditioning, heat, Am/Fm CD radio, engine brake, tandem axle, full screw, Simonsen model 4816 dry tender box, rear discharge auger, all hydraulic, electric roll over tarp, shows 959,788 miles. Notes: PLEASE ALLOW AT LEAST 60 DAYS FOR TITLE TRANSFER. Item Location: Dunlap, IA 51529 Equipment Sold "AS IS, WHERE IS": All equipment/property is sold "AS IS, WHERE IS" with no warranty or guarantees, expressed or implied, No operational assessments have been made by DPA Auctions on this item, it has been photographed ONLY.



## #30 - 2013 Miller Nitro 5333 Sprayer (CP698)

2013 Miller Nitro 5333 Sprayer (CP698), Cummins diesel engine, hydrostatic transmission, heat, air conditioning, Am/Fm CD radio, Premium cab, deluxe light package, 1600 gallon stainless steel tank, 100' boom, Auto Height control, Boom blowout, High Flow Pump, Premium Cab, Trimble Field IQ, CFX-750 Monitor, Michelin 380/90R46 tires, Inspected and Repaired in 2018, Clean One owner, Field Ready, Raven Auto Boom Monitor, shows 1,766 hours. Notes: All new filters replace, All hydraulic oil was changed. Item Location: Davenport, NE 68335 Equipment Sold "AS IS, WHERE IS": All equipment/property is sold "AS IS, WHERE IS" with no warranty or guarantees, expressed or implied, No operational assessments have been made by DPA Auctions on this item, it has been photographed ONLY.



## #31 - John Deere 7200 Planter (AL591)

John Deere 7200 Planter (AL591), 16 rows, 30" spacing, good solid planter. Notes: Item Location: Brownsville, TN 38012 Equipment Sold "AS IS, WHERE IS": All equipment/property is sold "AS IS, WHERE IS" with no warranty or guarantees, expressed or implied, No operational assessments have been made by DPA Auctions on this item, it has been photographed ONLY.



## #32 - Great Plains 2330SC Rolling Harrow (ED870)

Great Plains 2330SC Rolling Harrow (ED870), 30 foot rolling harrow, extendable tongue, hitch is included, fits a Case IH disc. Notes: Item Location: Petersburg, NE 68652 Equipment Sold "AS IS, WHERE IS": All equipment/property is sold "AS IS, WHERE IS" with no warranty or guarantees, expressed or implied, No operational assessments have been made by DPA Auctions on this item, it has been photographed ONLY.



### #33 - 2013 Salford 8210 Plow (PD1222)

2013 Salford 8210 Plow (PD1222), flex-trail moldboard plow, 6X8 2 piece moldboard plow, IH style bottoms, hydraulic steering, features four-way flex allowing the plow to flex side to side as well as up and down in the center giving this machine exceptional steering and contouring ability, 7-14 bottoms, ideal for medium to large farming operations, uses Salford's 4200 model as the back half giving you the option to run a smaller plow in tighter areas where length and maneuverability is a concern, uses durable frames with 8"X8" main beams that are built to last, under frame and fore-aft clearance means the plow is almost impossible to plug, can match bottoms to the soil conditions and choose to incorporate more residue, the shanks are a more durable design and over half of the grease fittings on the machine have been replaced by high wear bushings for faster easier maintenance, features hydraulic steering and manual adjustable plowing widths from 14 to 20 inches on heavy mainframes. Notes: Will help load. Item Location: Etna Green, IN 46524 Equipment Sold "AS IS, WHERE IS": All equipment/property is sold "AS IS, WHERE IS" with no warranty or guarantees, expressed or implied, No operational assessments have been made by DPA Auctions on this item, it has been photographed ONLY.



### #34 - NH3 Tank (NP7794, Unit 12637)

NH3 Tank (NP7794, Unit 12637), 1,000 gallon capacity, top front fill, water tank, 4 wheel running gear, 11L-15 tires, data plate, Tank #16. Notes: Item Location: Galva, KS 67443 Equipment Sold "AS IS, WHERE IS": All equipment/property is sold "AS IS, WHERE IS" with no warranty or guarantees, expressed or implied, No operational assessments have been made by DPA Auctions on this item, it has been photographed ONLY.



### #35 - NH3 Tank (NP7795, Unit 18825)

NH3 Tank (NP7795, Unit 18825), 1,000 gallon capacity, top front fill, water tank, Hamby 4 wheel running gear, 11L-15 tires, data plate, Tank #12. Notes: Item Location: Galva, KS 67443 Equipment Sold "AS IS, WHERE IS": All equipment/property is sold "AS IS, WHERE IS" with no warranty or guarantees, expressed or implied, No operational assessments have been made by DPA Auctions on this item, it has been photographed ONLY.



### #36 - NH3 Tank (NP7796, Unit 73081)

NH3 Tank (NP7796, Unit 73081), 1,000 gallon capacity, extreme front fill, water tank, 4 wheel running gear, 11L-15 tires, data plate, Tank #OK28. Notes: Item Location: Galva, KS 67443 Equipment Sold "AS IS, WHERE IS": All equipment/property is sold "AS IS, WHERE IS" with no warranty or guarantees, expressed or implied, No operational assessments have been made by DPA Auctions on this item, it has been photographed ONLY.



### #37 - NH3 Tank (NP7797, Unit 18834)

NH3 Tank (NP7797, Unit 18834), 1,000 gallon capacity, top front fill, water tank, Hamby 4 wheel running gear, 11L-15 tires, data plate, Tank #OK26. Notes: Item Location: Galva, KS 67443 Equipment Sold "AS IS, WHERE IS": All equipment/property is sold "AS IS, WHERE IS" with no warranty or guarantees, expressed or implied, No operational assessments have been made by DPA Auctions on this item, it has been photographed ONLY.



### #38 - 2012 RoGator 1300 Sprayer (PZ1287, Unit 39)

2012 RoGator 1300 Sprayer (PZ1287, Unit 39), Sisu diesel engine, hydrostatic transmission, air conditioning, heat, Am/Fm CD stereo, leather seat, Beacon light, 1300 gallon stainless steel liquid system, 120' boom, foam marker, top poly rinse tank, front fill, Continental 710/70R38 flotation tires, Good Year Ultra Sprayer 380/90R46 row crop tires, lightbar, shows 5504 hours. Notes: Full maintenance every year, oil change every 500 hours, very well maintained machine. Item Location: Baileyville, IL 61007 Equipment Sold "AS IS, WHERE IS": All equipment/property is sold "AS IS, WHERE IS" with no warranty or guarantees, expressed or implied, No operational assessments have been made by DPA Auctions on this item, it has been photographed ONLY.



### #39 - 2003 SRES Advanced Research Planter (PZ1284)

2003 SRES Advanced Research Planter (PZ1284), 8 row, 30" spacing, NO plot tripping mechanism, buyer will need to retrofit with their own tripping system. Notes: Item Location: Williamsburg, IA 52361 Equipment Sold "AS IS, WHERE IS": All equipment/property is sold "AS IS, WHERE IS" with no warranty or guarantees, expressed or implied, No operational assessments have been made by DPA Auctions on this item, it has been photographed ONLY.



### #40 - New Leader MultiApplier Insert (NP7807)

New Leader MultiApplier Insert (NP7807), MULTAPPLIERS-7, L4000 G4, stainless steel. Notes: Item Location: Holland, KS 67410 Equipment Sold "AS IS, WHERE IS": All equipment/property is sold "AS IS, WHERE IS" with no warranty or guarantees, expressed or implied, No operational assessments have been made by DPA Auctions on this item, it has been photographed ONLY.



#### #41 - (4) Goodyear Flotation Tires/Rims (NP7806)

(4) Goodyear Flotation Tires/Rims (NP7806), Model DT820, size 650/65R38, 10 bolt rim pattern. Notes: Came off RoGator 1074 Sprayer. Item Location: Holland, KS 67410 Equipment Sold "AS IS, WHERE IS": All equipment/property is sold "AS IS, WHERE IS" with no warranty or guarantees, expressed or implied, No operational assessments have been made by DPA Auctions on this item, it has been photographed ONLY.



#### #42 - 1991 John Deere 2955 Tractor (PZ1268)

1991 John Deere 2955 Tractor (PZ1268), John Deere diesel engine, 8/4 syncro transmission, cab, heat, Am/Fm radio, PTO, 2 port hydraulics, 3 point, 10.00-16 front tires, 18.4-38 rear tires, shows 3,401 hours. Notes: Tractor has a hydraulic oil leak coming from in front of the cab around the bell housing (it only leaks when you use one of the hydraulic levers). Fire Extinguisher DOES NOT SELL with this tractor. Item Location: Huxley, IA 50124 Equipment Sold "AS IS, WHERE IS": All equipment/property is sold "AS IS, WHERE IS" with no warranty or guarantees, expressed or implied, No operational assessments have been made by DPA Auctions on this item, it has been photographed ONLY.



#### #43 - 2007 Freightliner Columbia Truck (NP8004)

2007 Freightliner Columbia Truck (NP8004), Mercedes diesel engine, 10 speed transmission, heat, air conditioning, Am/Fm radio, tandem axle, air ride suspension, 5th wheel plate, mini sleeper, shows 1,176,333 miles. Notes: Item Location: Odessa, TX 79762 Equipment Sold "AS IS, WHERE IS": All equipment/property is sold "AS IS, WHERE IS" with no warranty or guarantees, expressed or implied, No operational assessments have been made by DPA Auctions on this item, it has been photographed ONLY.



#### #44 - 2012 RoGator 1300B Dry Machine (TH431)

2012 RoGator 1300B Dry Machine (TH431), diesel engine hydrostatic transmission, heat, air conditioning, Am/Fm radio, AirMax dry air flow system, 60' boom, electric roll tarp, 480/80R42 mid size float tires, approximately 80% tread, backup camera, Raven Viper Pro monitor, shows 2,207 hrs. Notes: Machine runs good and was used during the 2018 season. This machine has an issue with one boom not folding in completely. Item Location: Qulin, MO 63961 Equipment Sold "AS IS, WHERE IS": All equipment/property is sold "AS IS, WHERE IS" with no warranty or guarantees, expressed or implied, No operational assessments have been made by DPA Auctions on this item, it has been photographed ONLY.



#### #46 - 2004 Freightliner (KMK778)

2004 Freightliner (KMK778), Mercedes Benz diesel engine, 10 speed Eaton Fuller transmission, engine brake, air ride suspension, cruise control, heat, air conditioning, am/fm radio, power windows and locks, tilt/telescope steering wheel, dual fuel tanks, sleeper, 5th wheel, 22.5 tires, shows 707,816 miles. Notes: Item Location: Nichols, IA 52766 Equipment Sold "AS IS, WHERE IS": All equipment/property is sold "AS IS, WHERE IS" with no warranty or guarantees, expressed or implied, No operational assessments have been made by DPA Auctions on this item, it has been photographed ONLY.



#### #47 - NH3 Tank (NP7798, Unit 17000)

NH3 Tank (NP7798, Unit 17000), 1,000 gallon capacity, top front fill, water tank, 4 wheel running gear, 11L-15 tires, NTIP No. 124144, data plate, Tank #OK21. Notes: Item Location: Galva, KS 67443 Equipment Sold "AS IS, WHERE IS": All equipment/property is sold "AS IS, WHERE IS" with no warranty or guarantees, expressed or implied, No operational assessments have been made by DPA Auctions on this item, it has been photographed ONLY.



#### #48 - NH3 Tank (NP7799, Unit 18606)

NH3 Tank (NP7799, Unit 18606), 1,000 gallon capacity, top front fill, water tank, Hamby 4 wheel running gear, 11L-15 tires, data plate, Tank #26. Notes: Item Location: Galva, KS 67443 Equipment Sold "AS IS, WHERE IS": All equipment/property is sold "AS IS, WHERE IS" with no warranty or guarantees, expressed or implied, No operational assessments have been made by DPA Auctions on this item, it has been photographed ONLY.



#### #49 - NH3 Tank (NP7800, Unit 12701)

NH3 Tank (NP7800, Unit 12701), 1,000 gallon capacity, top front fill, water tank, 4 wheel running gear, 11L-15 tires, data plate, Tank #OK04. Notes: Item Location: Galva, KS 67443 Equipment Sold "AS IS, WHERE IS": All equipment/property is sold "AS IS, WHERE IS" with no warranty or guarantees, expressed or implied, No operational assessments have been made by DPA Auctions on this item, it has been photographed ONLY.



#### #50 - NH3 Tank (NP7801, Unit 91809)

NH3 Tank (NP7801, Unit 91809), 1,000 gallon capacity, extreme front fill, water tank, 4 wheel running gear, 11L-15 tires, data plate, Tank #11. Notes: Item Location: Galva, KS 67443 Equipment Sold "AS IS, WHERE IS": All equipment/property is sold "AS IS, WHERE IS" with no warranty or guarantees, expressed or implied, No operational assessments have been made by DPA Auctions on this item, it has been photographed ONLY.



---

### #51 - 2012 RoGator 1300 Sprayer (PZ1288, Unit 38)

2012 RoGator 1300 Sprayer (PZ1288, Unit 38), Sisu diesel engine, hydrostatic transmission, air conditioning, heat, Am/Fm CD stereo, leather seat, Beacon light, 1300 gallon stainless steel liquid system, 120' boom, foam marker, top poly rinse tank, front fill, Hypro pump, Continental 710/70R38 flotation tires, Good Year Ultra Sprayer 380/90R46 row crop tires, lightbar, shows 5221 hours. Notes: Full maintenance every year, oil change every 500 hours, very well maintained machine. Item Location: Baileyville, IL 61007 Equipment Sold "AS IS, WHERE IS": All equipment/property is sold "AS IS, WHERE IS" with no warranty or guarantees, expressed or implied, No operational assessments have been made by DPA Auctions on this item, it has been photographed ONLY.



---

### #52 - 2008 SRES Advanced Research Planter (NP8000)

2008 SRES Advanced Research Planter (NP8000), 8 row, 30" spacing, does include 60 hole soybeans plate, corn plates 9 hole, 12 hole, 24 hole, 30 hole, Accommodate headsets with (2) hand held radios, 10 bulk units, numerous spare parts, NO plot tripping mechanism, buyer will need to retrofit with their own tripping system, no insecticide control box for amvac smart box meters, no hammerhead. Notes: Item Location: Monmouth, IL 61462 Equipment Sold "AS IS, WHERE IS": All equipment/property is sold "AS IS, WHERE IS" with no warranty or guarantees, expressed or implied, No operational assessments have been made by DPA Auctions on this item, it has been photographed ONLY.



---

### #53 - 1979 Big A 2500 Liquid Floater (PZ1326)

1979 Big A 2500 Liquid Floater (PZ1326), Cummins V8 555 diesel engine, 3 speed automatic transmission, heat, 1600 gallon stainless steel liquid system, 60' boom - 2 section, 60" nozzle spacing, air shutoffs, Good Year 66x43.00-25 front tire @ 40%, Firestone 66x43.00-25 rear tires @ 30%, Raven SCS440 controller, shows 44,621 miles. Notes: New product pump in 2018, HVAC needs attention. Item Location: Chebanse, IL 60922 Equipment Sold "AS IS, WHERE IS": All equipment/property is sold "AS IS, WHERE IS" with no warranty or guarantees, expressed or implied, No operational assessments have been made by DPA Auctions on this item, it has been photographed ONLY.



---

### #54 - Club Car Golf Cart (PZ1290)

Club Car Golf Cart (PZ1290), Club Car golf cart, electric, Power Drive battery charger, needs controller, NON runner. Notes: Non runner. Item Location: Baileyville, IL 61007 Equipment Sold "AS IS, WHERE IS": All equipment/property is sold "AS IS, WHERE IS" with no warranty or guarantees, expressed or implied, No operational assessments have been made by DPA Auctions on this item, it has been photographed ONLY.



---

### #55 - Pallet Hydraulic Cylinders (PZ1295)

Pallet Hydraulic Cylinders (PZ1295), Pallet of hydraulic cylinders. Notes: Item Location: Baileyville, IL 61007 Equipment Sold "AS IS, WHERE IS": All equipment/property is sold "AS IS, WHERE IS" with no warranty or guarantees, expressed or implied, No operational assessments have been made by DPA Auctions on this item, it has been photographed ONLY.



---

### #56 - New Turbo (PZ1330)

New Turbo (PZ1330), New Turbo for Ag Chem C series Cummins motor. Notes: Item Location: Baileyville, IL 61007 Equipment Sold "AS IS, WHERE IS": All equipment/property is sold "AS IS, WHERE IS" with no warranty or guarantees, expressed or implied, No operational assessments have been made by DPA Auctions on this item, it has been photographed ONLY.



---

### #57 - Clark Forklift (1285, Unit 3609)

Clark Forklift (1285, Unit 3609), Clark model C500-Y45 forklift, LP gas engine, shuttle shift transmission, canopy, lights, 7.00-12 front tires, 6.50x10 rear tires. Notes: LP tank NOT included, forks will not raise cylinder leaks. Please call seller for more information. Item Location: Mechanicsville, IA 52306 Equipment Sold "AS IS, WHERE IS": All equipment/property is sold "AS IS, WHERE IS" with no warranty or guarantees, expressed or implied, No operational assessments have been made by DPA Auctions on this item, it has been photographed ONLY.



---

### #58 - Overhead Tank (PZ1323)

Overhead Tank (PZ1323), 3200 gallon open top stainless steel cone bottom overhead tank. Notes: Item Location: New Berlin, IL 62670 Equipment Sold "AS IS, WHERE IS": All equipment/property is sold "AS IS, WHERE IS" with no warranty or guarantees, expressed or implied, No operational assessments have been made by DPA Auctions on this item, it has been photographed ONLY.



---

### #59 - Liquid Nurse Tank (PZ1324)

Liquid Nurse Tank (PZ1324), 3150 gallon stainless steel single compartment liquid nurse tank, side stainless steel tank, ladder, stainless steel fenders. Notes: Running gear NOT included. Item Location: New Berlin, IL 62670 Equipment Sold "AS IS, WHERE IS": All equipment/property is sold "AS IS, WHERE IS" with no warranty or guarantees, expressed or implied, No operational assessments have been made by DPA Auctions on this item, it has been photographed ONLY.



---

### #60 - Liquid Storage Tank (PZ1321, Unit A)

Liquid Storage Tank (PZ1321, Unit A), 1100 gallon vertical stainless steel liquid storage tank, stainless steel stands. Notes: Item Location: New Berlin, IL 62670 Equipment Sold "AS IS, WHERE IS": All equipment/property is sold "AS IS, WHERE IS" with no warranty or guarantees, expressed or implied, No operational assessments have been made by DPA Auctions on this item, it has been photographed ONLY.



---

### #61 - Liquid Storage Tank (PZ1322, Unit B)

Liquid Storage Tank (PZ1322, Unit B), 1100 gallon vertical stainless steel liquid storage tank, stainless steel stands. Notes: Item Location: New Berlin, IL 62670 Equipment Sold "AS IS, WHERE IS": All equipment/property is sold "AS IS, WHERE IS" with no warranty or guarantees, expressed or implied, No operational assessments have been made by DPA Auctions on this item, it has been photographed ONLY.



---

### #62 - 2005 SRES Advanced Research Planter (NP8001)

2005 SRES Advanced Research Planter (NP8001), 8 row, 30" spacing, NO plot tripping mechanism, buyer will need to retrofit with their own tripping system. Notes: Item Location: Mason, MI 48854 Equipment Sold "AS IS, WHERE IS": All equipment/property is sold "AS IS, WHERE IS" with no warranty or guarantees, expressed or implied, No operational assessments have been made by DPA Auctions on this item, it has been photographed ONLY.



---

### #63 - 1991 John Deere 2955 Tractor (PZ1282)

1991 John Deere 2955 Tractor (PZ1282), John Deere diesel engine (S/N CD6359D931742), 16 speed hi/lo transmission, canopy, 10.00-16 front tires, 540/1000 PTO, 3 port, 2 port hydraulics, 18.4-38 rear tires, shows 3,354 hours. Notes: Fire Extinguisher DOES NOT SELL with this tractor. Item Location: Williamsburg, IA 52361 Equipment Sold "AS IS, WHERE IS": All equipment/property is sold "AS IS, WHERE IS" with no warranty or guarantees, expressed or implied, No operational assessments have been made by DPA Auctions on this item, it has been photographed ONLY.



---

### #64 - 2002 Terra Gator 9103 Combo Floater (PZ1301, Unit 22)

2002 Terra Gator 9103 Combo Floater (PZ1301, Unit 22), Cat diesel engine, 18 speed transmission, air conditioning, heat, Am/Fm cassette radio, New Leader L3220 G4-14 stainless steel dry spreader box (S/N 116979), twin spinner, all hydraulic, 2400 gallon stainless steel liquid system (S/N L240038), 60/80' boom, foam marker, stainless steel foam marker tank, top poly rinse tank, Good Year VA73x44.00-32 front tire, Continental 1050/50R32 rear tires, Raven Starlink GPS, Raven SmarTrax, Raven monitor, lightbar, shows 7235 hours, 72,977 miles. Notes: Item Location: Baileyville, IL 61007 Equipment Sold "AS IS, WHERE IS": All equipment/property is sold "AS IS, WHERE IS" with no warranty or guarantees, expressed or implied, No operational assessments have been made by DPA Auctions on this item, it has been photographed ONLY.



---

### #65 - NH3 Tank (NP7802)

NH3 Tank (NP7802), 1,000 gallon capacity, top front fill, water tank, 4 wheel running gear, 11L-15 tires, data plate, Tank #OK03. Notes: Item Location: Galva, KS 67443 Equipment Sold "AS IS, WHERE IS": All equipment/property is sold "AS IS, WHERE IS" with no warranty or guarantees, expressed or implied, No operational assessments have been made by DPA Auctions on this item, it has been photographed ONLY.



---

### #66 - NH3 Tank (NP7803)

NH3 Tank (NP7803), 1,000 gallon capacity, top front fill, water tank, 4 wheel running gear, 11L-15 tires, data plate, Tank #31. Notes: Item Location: Galva, KS 67443 Equipment Sold "AS IS, WHERE IS": All equipment/property is sold "AS IS, WHERE IS" with no warranty or guarantees, expressed or implied, No operational assessments have been made by DPA Auctions on this item, it has been photographed ONLY.



---

### #67 - NH3 Tank (NP7804, Unit 73084)

NH3 Tank (NP7804, Unit 73084), 1,000 gallon capacity, top front fill, 4 wheel running gear, 11L-15 tires, data plate. Notes: Item Location: Galva, KS 67443 Equipment Sold "AS IS, WHERE IS": All equipment/property is sold "AS IS, WHERE IS" with no warranty or guarantees, expressed or implied, No operational assessments have been made by DPA Auctions on this item, it has been photographed ONLY.



---

### #68 - 1994 Hagie 284 Sprayer (PZ1327)

1994 Hagie 284 Sprayer (PZ1327), 5.9 Cummins diesel engine, hydrostatic transmission, air conditioning, heat, Am/Fm radio, 2 - 400 gallon poly liquid tanks, 60' boom - 3 section, 20"/30" nozzle spacings, Firestone 13.6x28 tires, Raven SCS440 controller, shows 3014 hours. Notes: New product pump in 2017, front suspension and tank saddles fully rebuilt in 2016. Item Location: Chebanse, IL 60922 Equipment Sold "AS IS, WHERE IS": All equipment/property is sold "AS IS, WHERE IS" with no warranty or guarantees, expressed or implied, No operational assessments have been made by DPA Auctions on this item, it has been photographed ONLY.



---

### #70 - Blu Jet Applicator (PZ1286, Unit 2002)

Blu Jet Applicator (PZ1286, Unit 2002), Blu Jet liquid applicator, 750 gallon poly liquid tank, John Blue ground driven pump, hydraulic wings, bare bar, 12.5L-15 flotation tires. Notes: Item Location: Maquoketa, IA 52060 Equipment Sold "AS IS, WHERE IS": All equipment/property is sold "AS IS, WHERE IS" with no warranty or guarantees, expressed or implied, No operational assessments have been made by DPA Auctions on this item, it has been photographed ONLY.



---

### #71 - Liquid Storage Tank (PZ1275, Unit 151)

Liquid Storage Tank (PZ1275, Unit 151), 20,000 gallon vertical steel cone bottom liquid storage tank. Notes: Tank leaks at seams, no product in it for 8 years. Item Location: Charles City, IA 50616 Equipment Sold "AS IS, WHERE IS": All equipment/property is sold "AS IS, WHERE IS" with no warranty or guarantees, expressed or implied, No operational assessments have been made by DPA Auctions on this item, it has been photographed ONLY.



---

### #73 - Seed Vac (PZ1329)

Seed Vac (PZ1329), 2 - Seed Vacs, non runner motors with hose, 1-hopper, 1-outlet with hose. Notes: Item Location: Walcott, IA 52773 Equipment Sold "AS IS, WHERE IS": All equipment/property is sold "AS IS, WHERE IS" with no warranty or guarantees, expressed or implied, No operational assessments have been made by DPA Auctions on this item, it has been photographed ONLY.



---

### #74 - Ingersoll Rand Air Compressor (PZ1328)

Ingersoll Rand Air Compressor (PZ1328), Ingersoll Rand T30 air compressor, 200 volt, 3 phase, 21 amp, Baldor 7.5 hp motor. Notes: Item Location: Walcott, IA 52773 Equipment Sold "AS IS, WHERE IS": All equipment/property is sold "AS IS, WHERE IS" with no warranty or guarantees, expressed or implied, No operational assessments have been made by DPA Auctions on this item, it has been photographed ONLY.



---

### #75 - Quality Plus Seed Conveyor (PZ1272, Unit 62)

Quality Plus Seed Conveyor (PZ1272, Unit 62), Quality Plus seed conveyor, electric motor, portable, ST175/80R16 tires. Notes: Item Location: New Hampton, IA 50659 Equipment Sold "AS IS, WHERE IS": All equipment/property is sold "AS IS, WHERE IS" with no warranty or guarantees, expressed or implied, No operational assessments have been made by DPA Auctions on this item, it has been photographed ONLY.



---

### #76 - 1994 Ford F800 Truck (PZ1271, Unit 20)

1994 Ford F800 Truck (PZ1271, Unit 20), diesel engine, 6 speed transmission, air conditioning, heat, Am/Fm radio, single axle, 11R22.5 tires, shows 218,515 miles. Notes: Item Location: New Hampton, IA 50659 Equipment Sold "AS IS, WHERE IS": All equipment/property is sold "AS IS, WHERE IS" with no warranty or guarantees, expressed or implied, No operational assessments have been made by DPA Auctions on this item, it has been photographed ONLY.



---

### #77 - New P & H Bumper (PZ1273)

New P & H Bumper (PZ1273), New P & H bumper, hardware. Notes: Item Location: New Hampton, IA 50659 Equipment Sold "AS IS, WHERE IS": All equipment/property is sold "AS IS, WHERE IS" with no warranty or guarantees, expressed or implied, No operational assessments have been made by DPA Auctions on this item, it has been photographed ONLY.



### #78 - Aluminum Storage Box (PZ1274)

Aluminum Storage Box (PZ1274), Aluminum side storage box. Notes: Item Location: New Hampton, IA 50659 Equipment Sold "AS IS, WHERE IS": All equipment/property is sold "AS IS, WHERE IS" with no warranty or guarantees, expressed or implied, No operational assessments have been made by DPA Auctions on this item, it has been photographed ONLY.



### #79 - 1996 Bobcat 773 Skid Steer (PZ1276, Unit 2807)

1996 Bobcat 773 Skid Steer (PZ1276, Unit 2807), diesel engine, hydrostatic transmission, canopy, lights, (2-front hydraulic ports will be removed), shows 2427 hours. Notes: 2-front hydraulic ports will be removed, No bucket or forks, end of dip stick in motor, hydraulic leak. Please contact seller for more information. Item Location: Allison, IA 50602 Equipment Sold "AS IS, WHERE IS": All equipment/property is sold "AS IS, WHERE IS" with no warranty or guarantees, expressed or implied, No operational assessments have been made by DPA Auctions on this item, it has been photographed ONLY.



### #80 - 2011 Merritt Dry Tender Trailer (PZ1277, Unit 747)

2011 Merritt Dry Tender Trailer (PZ1277, Unit 747), 2011 Merritt model 386X096X068X2F-X2SXMVT dry tender trailer, Rapat stainless steel rear conveyor, Rapat stainless steel undercar conveyor, Predator electric start gas engine tandem axle, Agri-Cover electric roll over tarp, 11R24.5 tires. Notes: Year old motor on bottom conveyor, bearing going out on bottom conveyor. Item Location: Allison, IA 50602 Equipment Sold "AS IS, WHERE IS": All equipment/property is sold "AS IS, WHERE IS" with no warranty or guarantees, expressed or implied, No operational assessments have been made by DPA Auctions on this item, it has been photographed ONLY.



### #81 - 2009 Kenworth T370 LP Truck (PZ1279, Unit 173)

2009 Kenworth T370 LP Truck (PZ1279, Unit 173), Paccar PX-6 diesel engine, Allison 3000RDS automatic transmission, air conditioning, heat, Am/Fm radio, cruise control, engine brake, single axle, air ride suspension, 2009 Trinity 3200 gallon LP tank, National Board & S/N 0900198, Megnetel volume gauge, LectroCount LCR-II meter, electric hose reel with hose, (Tank needs R Stamp weld repairs), 11R22.5 tires, shows 175,573 miles. Notes: Tank needs R Stamp weld repairs. Please call seller for more information. Item Location: Waterloo, IA 50703 Equipment Sold "AS IS, WHERE IS": All equipment/property is sold "AS IS, WHERE IS" with no warranty or guarantees, expressed or implied, No operational assessments have been made by DPA Auctions on this item, it has been photographed ONLY.



### #82 - 1991 Ford L8000 Truck (PZ1278, Unit 307)

1991 Ford L8000 Truck (PZ1278, Unit 307), diesel engine, Roadranger RT-7608LL transmission, air conditioning, heat, Am/Fm radio, tandem axle, full screw, air ride suspension, 11R22.5 tires, shows 200,160 miles. Notes: Item Location: Janesville, IA 50647 Equipment Sold "AS IS, WHERE IS": All equipment/property is sold "AS IS, WHERE IS" with no warranty or guarantees, expressed or implied, No operational assessments have been made by DPA Auctions on this item, it has been photographed ONLY.



### #83 - 2014 John Deere 4830 Sprayer (CP1016)

2014 John Deere 4830 Sprayer (CP1016), John Deere diesel engine, hydrostatic transmission, heat, air conditioning, Am/Fm CD radio, 1,000 gallon stainless steel liquid system, 100' boom, 5-way nozzle bodies, stainless steel chemical inductor, front fill, Goodyear Ultra Spray 380/90R46 row crop tires, Lincoln SKF greaser, StarFire 3000 globe, GreenStar 2 monitor, shows 3,100 hours. Notes: This machine will be sold with ROW CROP TIRES, the flotation tires for this machine will be sold in a separate lot on this auction. Item Location: Beloit, KS 67420 Equipment Sold "AS IS, WHERE IS": All equipment/property is sold "AS IS, WHERE IS" with no warranty or guarantees, expressed or implied, No operational assessments have been made by DPA Auctions on this item, it has been photographed ONLY.



### #84 - 2009 Chevrolet 2500HD Extended Cab Pickup (PZ0796)

2009 Chevrolet 2500HD Extended Cab Pickup (PZ0796), 4x4, gas engine, automatic transmission, air conditioning, heat, Am/Fm CD stereo, cruise control, power windows & locks, power drivers side seat, running boards, LT285/75R16 tires, shows 191,023 miles. Notes: Item Location: Westpoint, IN 47992 Equipment Sold "AS IS, WHERE IS": All equipment/property is sold "AS IS, WHERE IS" with no warranty or guarantees, expressed or implied, No operational assessments have been made by DPA Auctions on this item, it has been photographed ONLY.



### #85 - 2016 Doyle Field Loader (NP8003)

2016 Doyle Field Loader (NP8003), 24" belt, portable, Honda gas motor (45.5 hours), hydraulic controls, hydraulic oil tank. Notes: Item Location: Lovilia, IA 50150 Equipment Sold "AS IS, WHERE IS": All equipment/property is sold "AS IS, WHERE IS" with no warranty or guarantees, expressed or implied, No operational assessments have been made by DPA Auctions on this item, it has been photographed ONLY.



### #86 - 1985 John Deere 4450 Tractor (PZ1283)

1985 John Deere 4450 Tractor (PZ1283), John Deere diesel engine, power shift transmission, cab, heat, air conditioning DOES NOT WORK, Am/Fm CD radio, (12) front weights, 11.00-16 front tires, 18.4R42 rear duals (see photos), 3 point, 2 port hydraulics, 540/1000 PTO, shows 6,813 hours. Notes: Air Conditioning DOES NOT WORK. Fire Extinguisher DOES NOT SELL with this tractor. Item Location: Williamsburg, IA 52361 Equipment Sold "AS IS, WHERE IS": All equipment/property is sold "AS IS, WHERE IS" with no warranty or guarantees, expressed or implied, No operational assessments have been made by DPA Auctions on this item, it has been photographed ONLY.



### #87 - 2004 Kinze 16 Row 3600 Lift and Twist Planter (PD1229)

2004 Kinze 16 Row 3600 Lift and Twist Planter (PD1229), ground drive, dawn curventine closing wheels, 2X2 liquid fertilizer, trash whippers, row markers. Notes: Item Location: Fort Pierre, SD 57532 Equipment Sold "AS IS, WHERE IS": All equipment/property is sold "AS IS, WHERE IS" with no warranty or guarantees, expressed or implied, No operational assessments have been made by DPA Auctions on this item, it has been photographed ONLY.



### #88 - Progressive 6200 Anhydrous Toolbar (PD1224)

Progressive 6200 Anhydrous Toolbar (PD1224), anhydrous and dual applicator, 16 knife. Notes: Item Location: Waterloo, IL 62298 Equipment Sold "AS IS, WHERE IS": All equipment/property is sold "AS IS, WHERE IS" with no warranty or guarantees, expressed or implied, No operational assessments have been made by DPA Auctions on this item, it has been photographed ONLY.



### #89 - Wetherell Disk Ripper (KMK777)

Wetherell Disk Ripper (KMK777), pull type, 5 shank ripper, approx. 100 acres on points, 22" disk blades, approx. 200 acres on disk blades, set of 18" disk blades are included, hydraulic, 16.5L - 16.1 SL tires. Notes: Item Location: Panama, IA 51562 Equipment Sold "AS IS, WHERE IS": All equipment/property is sold "AS IS, WHERE IS" with no warranty or guarantees, expressed or implied, No operational assessments have been made by DPA Auctions on this item, it has been photographed ONLY.



### #90 - Wilrich Field Cultivator (KMK776)

Wilrich Field Cultivator (KMK776), 46' hydraulic folding field cultivator, walking tandem axles, 4 bar rear harrow, 9.5L-15 tires. Notes: Only 40 acres on the sweeps. Item Location: Panama, IA 51562 Equipment Sold "AS IS, WHERE IS": All equipment/property is sold "AS IS, WHERE IS" with no warranty or guarantees, expressed or implied, No operational assessments have been made by DPA Auctions on this item, it has been photographed ONLY.



### #91 - 2003 Freightliner Columbia CL120 Day Cab Truck (NP8011)

2003 Freightliner Columbia CL120 Day Cab Truck (NP8011), Cat C-12 diesel engine (410HP), 10 speed transmission, heat, air conditioning, Am/Fm CD radio, cruise, air ride cab, tandem axle, air ride suspension, 5th wheel plate, single stack, dual aluminum fuel tanks, 275/80R225 tires, approx. 699,864 miles. Notes: Trailer pictured DOES NOT SELL. PRIOR SALVAGE TITLE. Item Location: Marthasville, MO 63357 Equipment Sold "AS IS, WHERE IS": All equipment/property is sold "AS IS, WHERE IS" with no warranty or guarantees, expressed or implied, No operational assessments have been made by DPA Auctions on this item, it has been photographed ONLY.



### #92 - 2011 Terra Gator 8204 Dry Floater (PZ1331)

2011 Terra Gator 8204 Dry Floater (PZ1331), Cat C9 diesel engine, Terra Shift transmission, air conditioning, heat, Am/Fm radio, New Leader L4000 G4 - 14' stainless steel dry spreader box (S/N 132487), Multiplier ready, twin spinner, all hydraulic, (Combo ready but dry unit only), Good Year 48x31.00R20 front tires, Michelin 1000/50R25 rear tires, Raven Viper Pro monitor, Raven SmarTrax, RGL600 lightbar, shows 4222 hours. Notes: Item Location: Roselawn, IN 46372 Equipment Sold "AS IS, WHERE IS": All equipment/property is sold "AS IS, WHERE IS" with no warranty or guarantees, expressed or implied, No operational assessments have been made by DPA Auctions on this item, it has been photographed ONLY.



### #93 - Komatsu Forklift (DR1290 Unit 4496)

Komatsu Forklift (DR1290 Unit 4496), model FC25C, LP gas engine, shuttle shift transmission, 3750 lbs capacity, 2 stage mast, pneumatic tires, shows 7070 hours. Notes: Item Location: Waukon, IA 52172 Equipment Sold "AS IS, WHERE IS": All equipment/property is sold "AS IS, WHERE IS" with no warranty or guarantees, expressed or implied, No operational assessments have been made by DPA Auctions on this item, it has been photographed ONLY.



### #94 - Quality Plus Conveyor (DR1288 Unit 98)

Quality Plus Conveyor (DR1288 Unit 98), approximately 45' X6" portable conveyor, top drive electric motor, bottom hopper, cleated belt, starter box. Notes: Item Location: Waukon, IA 52172 Equipment Sold "AS IS, WHERE IS": All equipment/property is sold "AS IS, WHERE IS" with no warranty or guarantees, expressed or implied, No operational assessments have been made by DPA Auctions on this item, it has been photographed ONLY.



### #95 - Allis Chalmers CA (DR1289 Unit 281)

Allis Chalmers CA (DR1289 Unit 281), gas engine, 4 speed transmission, wide front, 5' belly mower deck. Notes: Tractor starts and runs, BUT does not start right off every time. Seller believes there are flywheel teeth missing. Item Location: Waukon, IA 52172 Equipment Sold "AS IS, WHERE IS": All equipment/property is sold "AS IS, WHERE IS" with no warranty or guarantees, expressed or implied, No operational assessments have been made by DPA Auctions on this item, it has been photographed ONLY.



### #96 - 2004 Chevy 2500HD (DR1286 Unit T413)

2004 Chevy 2500HD (DR1286 Unit T413), 6.0 liter gas engine, automatic transmission, regular cab, 4X4, AM/FM radio, air conditioning, cruise control, 255/75R16 tires, shows 193,148 miles. Notes: See pictures for body damage. Item Location: Garner, IA 50438 Equipment Sold "AS IS, WHERE IS": All equipment/property is sold "AS IS, WHERE IS" with no warranty or guarantees, expressed or implied, No operational assessments have been made by DPA Auctions on this item, it has been photographed ONLY.



### #97 - 1995 GMC 3500 HD (DR1287 Unit 41)

1995 GMC 3500 HD (DR1287 Unit 41), 6.0 liter gas engine, automatic transmission, regular cab, 4X4, AM/FM cassette radio, air conditioning, cruise control, rear ag bumper, 265/75R16 tires, shows 218,222 miles. Notes: Fuel tank in box IS NOT INCLUDED. Item Location: Lyle, MN 55953 Equipment Sold "AS IS, WHERE IS": All equipment/property is sold "AS IS, WHERE IS" with no warranty or guarantees, expressed or implied, No operational assessments have been made by DPA Auctions on this item, it has been photographed ONLY.



### #98 - 1995 Loral Easy Rider 2500 (DR1291)

1995 Loral Easy Rider 2500 (DR1291), IHC 4900 model, DT466 diesel engine, Allison automatic transmission, Air Max V dry air flow system, 70' stainless steel boom, Raven Viper Pro controller, Am/FM radio, cab heat/air conditioning, shows 4903 hours, 56,931 miles. Notes: Item Location: Genoa, WI 54632 Equipment Sold "AS IS, WHERE IS": All equipment/property is sold "AS IS, WHERE IS" with no warranty or guarantees, expressed or implied, No operational assessments have been made by DPA Auctions on this item, it has been photographed ONLY.



### #99 - Sudenga Conveyor (DR1293)

Sudenga Conveyor (DR1293), approximately 35' X 10" portable conveyor, hydraulic controlled, top end extension. Notes: Item Location: Genoa, WI 54632 Equipment Sold "AS IS, WHERE IS": All equipment/property is sold "AS IS, WHERE IS" with no warranty or guarantees, expressed or implied, No operational assessments have been made by DPA Auctions on this item, it has been photographed ONLY.



### #100 - (4) Firestone Flotation Tires/Rims (NP8012)

(4) Firestone Flotation Tires/Rims (NP8012), Radial 9000, size 600/65R38, 12 bolt rim pattern. Notes: Item Location: Beloit, KS 67420 Equipment Sold "AS IS, WHERE IS": All equipment/property is sold "AS IS, WHERE IS" with no warranty or guarantees, expressed or implied, No operational assessments have been made by DPA Auctions on this item, it has been photographed ONLY.



### #101 - 2008 Acura MDX 4WD Sport/Pwr Tail Gate (AL631)

2008 Acura MDX 4WD Sport/Pwr Tail Gate (AL631), V6 cylinder engine, automatic transmission, am/FM radio, CD player, digital display, power windows, locks, and mirrors, P225/55HR18 all season tires, heat/ac, cruise control, backup sensor, rear air conditioning, backup camera, navigation system, braking assist, dual climate control, stability control, traction control, anti-lock brakes, dual airbags, black exterior and ebony interior, (10) ten premium ELS speakers, speed sensitive volume control, 2nd row reclining 60/40 split folding seats, 3rd row 60/40 split folding seats, 6 disk in dash CD changer/MP3/WMA/DVD audio, Bluetooth HandsFreeLink wireless telephone interface with phonebook exchange, heated power mirrors with reverse great tilt down, integrated dual outlet exhaust, AcuraLink satellite communication system with real time traffic, exclusive 18" x 8" alloy wheels, HomeLink remote start, shows 133,118 miles. Notes: Financing is available for this vehicle. Item Location: Gretna, NE 68028 Equipment Sold "AS IS, WHERE IS": All equipment/property is sold "AS IS, WHERE IS" with no warranty or guarantees, expressed or implied, No operational assessments have been made by DPA Auctions on this item, it has been photographed ONLY.



**#102 - 2012 CaseIH 4430 Patriot Sprayer (NJP1391, Unit 78078)**

2012 CaseIH 4430 Patriot Sprayer (NJP1391, Unit 78078), diesel engine, hydrostatic transmission, air conditioning, heat, Am/Fm CD stereo, leather seat, 1200 gallon stainless steel liquid system, 100' boom, direct injection system (Never used), stainless steel chemical inductor, top poly rinse tank, 650/65R38 flotation tires, Aim Command, Raven Viper Pro monitor, Vision Works cab camera, Raven SmarTrax 600ic lightbar, shows 3978 hours. Notes: Row crop tires will sell separately on this auction. Item Location: Portland, TN 37148 Equipment Sold "AS IS, WHERE IS": All equipment/property is sold "AS IS, WHERE IS" with no warranty or guarantees, expressed or implied, No operational assessments have been made by DPA Auctions on this item, it has been photographed ONLY.

**#103 - 2010 John Deere 4930 Dry Machine (TR7607)**

2010 John Deere 4930 Dry Machine (TR7607), Diesel Engine, Hydrostat transmission, AM/FM CD player, Heat/AC, New Leader Dry Spreader box, Dual Spinners, fenders, Starfire ITC Globe, 620/70R46 Tires. Row Crop Tires are also included, 4279 hours. Notes: Item Location: Dawson, NE 68337 Equipment Sold "AS IS, WHERE IS": All equipment/property is sold "AS IS, WHERE IS" with no warranty or guarantees, expressed or implied, No operational assessments have been made by DPA Auctions on this item, it has been photographed ONLY.

**#104 - Allis Chalmers Scraper (DR1292)**

Allis Chalmers Scraper (DR1292), electric/hydraulic pull scraper, hydraulic eject, rear push bar, front 5th wheel axle. Notes: Also includes cab control. Item Location: Genoa, WI 54632 Equipment Sold "AS IS, WHERE IS": All equipment/property is sold "AS IS, WHERE IS" with no warranty or guarantees, expressed or implied, No operational assessments have been made by DPA Auctions on this item, it has been photographed ONLY.

**#105 - 2013 RoGator 1396 (DR1320 Unit 3135)**

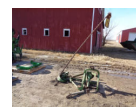
2013 RoGator 1396 (DR1320 Unit 3135), Cat diesel engine, hydrostatic drive, New Leader L4330 G4 stainless steel dry spinner box, Multiplier insert, electric roll tarp, Raven Viper Pro controller, Raven SmarTrax, light bar, AM/FM CD radio, cab cam, cab heat/air conditioning, 650/65R38 flotation tires, 5047 hours. Notes: Machine has BRAND NEW starter. Hydrostat is weak. Item Location: Arlington, WI 53911 Equipment Sold "AS IS, WHERE IS": All equipment/property is sold "AS IS, WHERE IS" with no warranty or guarantees, expressed or implied, No operational assessments have been made by DPA Auctions on this item, it has been photographed ONLY.

**#106 - R.E.M. Kincaid Plot Combine (NP7784)**

R.E.M. Kincaid Plot Combine (NP7784), gas engine, cab, driver & passenger seat, Climatrol top mount air conditioner unit, approx. 7' chopper, folding 6" rear auger, approx. 24" rear chute, Firestone 13.6-24 front tires, 6.00-16 rear tires. Notes: Cracked passenger window. Item Location: Whitewater, KS 67154 Equipment Sold "AS IS, WHERE IS": All equipment/property is sold "AS IS, WHERE IS" with no warranty or guarantees, expressed or implied, No operational assessments have been made by DPA Auctions on this item, it has been photographed ONLY.

**#107 - John Deere Cycle Mower (NP7785)**

John Deere Cycle Mower (NP7785), 3 point, 9' bar, 540 PTO. Notes: Item Location: Whitewater, KS 67154 Equipment Sold "AS IS, WHERE IS": All equipment/property is sold "AS IS, WHERE IS" with no warranty or guarantees, expressed or implied, No operational assessments have been made by DPA Auctions on this item, it has been photographed ONLY.

**#108 - Wetherell 2700 Cultivator (NP7788)**

Wetherell 2700 Cultivator (NP7788), 12 row, 3 point, 3 section, hydraulic fold. Notes: Item Location: Whitewater, KS 67154 Equipment Sold "AS IS, WHERE IS": All equipment/property is sold "AS IS, WHERE IS" with no warranty or guarantees, expressed or implied, No operational assessments have been made by DPA Auctions on this item, it has been photographed ONLY.

**#109 - Pallet of (4) Electric Motors (NP7786)**

Pallet of (4) Electric Motors (NP7786), (2) Reliance 1.5HP motors, (2) other various models. Notes: Item Location: Whitewater, KS 67154 Equipment Sold "AS IS, WHERE IS": All equipment/property is sold "AS IS, WHERE IS" with no warranty or guarantees, expressed or implied, No operational assessments have been made by DPA Auctions on this item, it has been photographed ONLY.

**#110 - John Deere Quick Coupler (NP7787)**

John Deere Quick Coupler (NP7787), R161314. Notes: Item Location: Whitewater, KS 67154 Equipment Sold "AS IS, WHERE IS": All equipment/property is sold "AS IS, WHERE IS" with no warranty or guarantees, expressed or implied, No operational assessments have been made by DPA Auctions on this item, it has been photographed ONLY.



### #111 - Windham Off Road Forklift (NP7781)

Windham Off Road Forklift (NP7781), Model W6AT85, Ford 3.3L diesel engine (S/N K866233), 6,000lb capacity, lift, tilt, side shift, approx. 48" forks, Alliance 13.00-24 front tires, PowerKing 7.50-20 rear tires, shows 3,180 hours. Notes: Item Location: Augusta, KS 67010 Equipment Sold "AS IS, WHERE IS": All equipment/property is sold "AS IS, WHERE IS" with no warranty or guarantees, expressed or implied, No operational assessments have been made by DPA Auctions on this item, it has been photographed ONLY.



### #112 - 2010 Chevrolet Silverado 1500 4WD Crew Cab (AL632)

2010 Chevrolet Silverado 1500 4WD Crew Cab (AL632), 8 cylinder engine, automatic transmission, am/FM radio, CD player, power windows, locks, mirrors, and seats, Bridgestone tires, heat/ac, remote start, cruise control, dual climate control, stability control, traction control, Bose sound system with subwoofer in center console, sun roof, bed liner, bed cover, anti-lock brakes, dual airbags, air bag deactivation, sleek red exterior and ebony interior, 145 amps, 348 lb.-ft of torque, 7000 lbs., aluminized stainless-steel muffler and tailpipe, auxiliary external transmission oil cooler, coil over shock, heavy-duty includes 46mm piston monotube shocks and 36mm front stabilizer bar, mounted audio controls, rear 60/40 folding bench, Solar-Ray deep-tinted windows, winch-type mounted under frame at rear, with E85 ethanol 326 hp, Bluetooth for phone personal cell phone connectivity to vehicle audio system, 17" steel spare, shows 102,786 miles. Notes: Financing is available for this vehicle. Item Location: Gretna, NE 68028 Equipment Sold "AS IS, WHERE IS": All equipment/property is sold "AS IS, WHERE IS" with no warranty or guarantees, expressed or implied, No operational assessments have been made by DPA Auctions on this item, it has been photographed ONLY.



### #113 - Brent Avalanche 1194 Grain Cart (NP7783)

Brent Avalanche 1194 Grain Cart (NP7783), 22" auger (ONLY USED 1 SEASON), manual roll tarp, hydraulics, 1000 PTO, Firestone 76x50.00-32 tires. Notes: Contact seller for details on side damage to grain cart. Item Location: Augusta, KS 67010 Equipment Sold "AS IS, WHERE IS": All equipment/property is sold "AS IS, WHERE IS" with no warranty or guarantees, expressed or implied, No operational assessments have been made by DPA Auctions on this item, it has been photographed ONLY.



### #114 - Row Crop Tires (NJP1392)

Row Crop Tires (NJP1392), 4 - Michelin SprayBib & Alliance 380/90R46 row crop tires and rims, came off 2012 CaseIH 4430 sprayer on this auction. Notes: Item Location: Portland, TN 37148 Equipment Sold "AS IS, WHERE IS": All equipment/property is sold "AS IS, WHERE IS" with no warranty or guarantees, expressed or implied, No operational assessments have been made by DPA Auctions on this item, it has been photographed ONLY.



### #115 - 2007 Case IH 4420 (DR0354)

2007 Case IH 4420 (DR0354), diesel engine, hydrostatic drive, 1200 gallon stainless steel liquid system, 90' boom, Aim Command, Raven SCS4600 controller, stainless steel chemical inductor, rear view camera, cab heat/air conditioning, AM/FM CD radio, 650/65R38 flotation tires, 380/90R46 row crop tires and rims, shows 4863 hours. Notes: Item Location: Mazomanie, WI 53560 Equipment Sold "AS IS, WHERE IS": All equipment/property is sold "AS IS, WHERE IS" with no warranty or guarantees, expressed or implied, No operational assessments have been made by DPA Auctions on this item, it has been photographed ONLY.



### #116 - 1999 Ford F250 (DR1343 Unit 99-9)

1999 Ford F250 (DR1343 Unit 99-9), NON RUNNER, Powerstroke diesel engine, (engine has fuel issues does not run), automatic transmission, extended cab, short box, 4X4, rear reciever hitch, power windows & locks, power drivers seat, AM/FM cassette radio, air conditioning, cruise control, 265/75R16 tires, cast aluminum wheels, shows 325,071 miles. Notes: Pickup DOES NOT RUN, engine has fuel issues. Item Location: Evansville, WI 53536 Equipment Sold "AS IS, WHERE IS": All equipment/property is sold "AS IS, WHERE IS" with no warranty or guarantees, expressed or implied, No operational assessments have been made by DPA Auctions on this item, it has been photographed ONLY.



### #117 - Layco Conveyor (DR1335)

Layco Conveyor (DR1335), approximately 32' stainless steel loadout conveyor, electric drive motor. Notes: Item Location: Jefferson, WI 53549 Equipment Sold "AS IS, WHERE IS": All equipment/property is sold "AS IS, WHERE IS" with no warranty or guarantees, expressed or implied, No operational assessments have been made by DPA Auctions on this item, it has been photographed ONLY.



### #118 - Yale Forklift (DR1310)

Yale Forklift (DR1310), NON RUNNER, LP gas engine, shuttle shift drive, solid tires, OROPS canopy, 4000 LB capacity, hydraulic side shift, 3 stage mast. Notes: NO LP tank, has not run for couple years. Item Location: Elkhorn, WI 53121 Equipment Sold "AS IS, WHERE IS": All equipment/property is sold "AS IS, WHERE IS" with no warranty or guarantees, expressed or implied, No operational assessments have been made by DPA Auctions on this item, it has been photographed ONLY.



---

### #125 - 2007 MacDon 974 Flex Draper (PD1225)

2007 MacDon 974 Flex Draper (PD1225), 36 foot flex draper, was ran on John Deere 9870 combine. Notes: Item Location: Waterloo, IL 62298 Equipment Sold "AS IS, WHERE IS": All equipment/property is sold "AS IS, WHERE IS" with no warranty or guarantees, expressed or implied, No operational assessments have been made by DPA Auctions on this item, it has been photographed ONLY.



---

### #126 - 2005 SRES Advanced Research Planter (NP8002)

2005 SRES Advanced Research Planter (NP8002), 8 row, 30" spacing, NO plot tripping mechanism, buyer will need to retrofit with their own tripping system. Notes: Item Location: Mason, MI 48854 Equipment Sold "AS IS, WHERE IS": All equipment/property is sold "AS IS, WHERE IS" with no warranty or guarantees, expressed or implied, No operational assessments have been made by DPA Auctions on this item, it has been photographed ONLY.



---

### #127 - Windham Off Road Forklift (NP7782)

Windham Off Road Forklift (NP7782), Model W6AT87, diesel engine, 6,000lb capacity, lift, tilt, side shift, approx. 48" forks, PowerKing 13.00-24 front tires, Samson 7.50-20 rear tires, shows 6,078 hours. Notes: Item Location: Augusta, KS 67010 Equipment Sold "AS IS, WHERE IS": All equipment/property is sold "AS IS, WHERE IS" with no warranty or guarantees, expressed or implied, No operational assessments have been made by DPA Auctions on this item, it has been photographed ONLY.



---

### #128 - Homemade Header Cart (NP7808)

Homemade Header Cart (NP7808), approx. 35' cart length, approx. 47" cart width, single axle, steerable tongue, 7.50R16 tires, bumper hitch. Notes: Item Location: Augusta, KS 67010 Equipment Sold "AS IS, WHERE IS": All equipment/property is sold "AS IS, WHERE IS" with no warranty or guarantees, expressed or implied, No operational assessments have been made by DPA Auctions on this item, it has been photographed ONLY.



---

### #129 - Digger Derek Truck Bed (PD1227)

Digger Derek Truck Bed (PD1227), off of 1993 International, hydraulic drill motor is not included. Notes: Item Location: Waterloo, IL 62298 Equipment Sold "AS IS, WHERE IS": All equipment/property is sold "AS IS, WHERE IS" with no warranty or guarantees, expressed or implied, No operational assessments have been made by DPA Auctions on this item, it has been photographed ONLY.



---

### #130 - 2010 Vector 300 Dry Machine (NJP1393, Unit 17735)

2010 Vector 300 Dry Machine (NJP1393, Unit 17735), diesel engine, Allison automatic transmission, air conditioning, heat, Am/Fm CD stereo, New Leader L4000 G4 dry spreader box, twin spinner, all hydraulic, with insert, 380/90R46 tires, Vision Works cab camera, Raven Viper Pro monitor, Phoenix 200 antenna, lightbar, shows 4691 hours. Notes: Item Location: Byhalia, MS 38611 Equipment Sold "AS IS, WHERE IS": All equipment/property is sold "AS IS, WHERE IS" with no warranty or guarantees, expressed or implied, No operational assessments have been made by DPA Auctions on this item, it has been photographed ONLY.



---

### #131 - 2008 Case IH 4520 (DR1344 Unit 08-3A)

2008 Case IH 4520 (DR1344 Unit 08-3A), diesel engine, Allison automatic transmission, New Leader L3020 G4 stainless steel dry spinner box, belt/chain, Raven Viper PRO controller, AM/FM CD radio, cab heat/air conditioning, 750/50R26 front tires, 1050/50R32 rear tires, shows 2949 hours. Notes: Item Location: Evansville, WI 53536 Equipment Sold "AS IS, WHERE IS": All equipment/property is sold "AS IS, WHERE IS" with no warranty or guarantees, expressed or implied, No operational assessments have been made by DPA Auctions on this item, it has been photographed ONLY.



---

### #132 - Raven Controllers (DR1338)

Raven Controllers (DR1338), (2) Raven SCS 760 controllers, (3) 3" flowmeters, Servo valves. Notes: Item Location: Evansville, WI 53536 Equipment Sold "AS IS, WHERE IS": All equipment/property is sold "AS IS, WHERE IS" with no warranty or guarantees, expressed or implied, No operational assessments have been made by DPA Auctions on this item, it has been photographed ONLY.



---

### #133 - Raven Sidekick (DR1339)

Raven Sidekick (DR1339), controller and wiring harness, (4) flow valves. Notes: Item Location: Evansville, WI 53536 Equipment Sold "AS IS, WHERE IS": All equipment/property is sold "AS IS, WHERE IS" with no warranty or guarantees, expressed or implied, No operational assessments have been made by DPA Auctions on this item, it has been photographed ONLY.



### #134 - 2012 GMC Acadia AWD 4dr SLT1 (AL634)

2012 GMC Acadia AWD 4dr SLT1 (AL634), V6 cylinder engine, automatic transmission, am/FM radio, CD player, digital display, power windows, locks, mirrors, and seats, heat/ac, cruise control, 3rd row seating, backup sensor, backup camera, rear air conditioning, remote starter, Bose sound system, anti-lock brakes, sleek black exterior, ebony interior, outside temp indicator and digital compass, MP3 playback, theft-deterrent system, universal home remote includes garage door opener, door and tailgate activated switches and illuminated entry and exit feature, Solar-Ray deep tinted windows, luggage rack, enjoy a free 3-month trial to the 'XM Select' Package, On Star, shows 118,160 miles. Notes: Financing is available for this vehicle. Item Location: Gretna, NE 68028 Equipment Sold "AS IS, WHERE IS": All equipment/property is sold "AS IS, WHERE IS" with no warranty or guarantees, expressed or implied, No operational assessments have been made by DPA Auctions on this item, it has been photographed ONLY.



### #135 - Shur Flows (DR1340)

Shur Flows (DR1340), (3) electronic Shurflow meters. Notes: Item Location: Evansville, WI 53536 Equipment Sold "AS IS, WHERE IS": All equipment/property is sold "AS IS, WHERE IS" with no warranty or guarantees, expressed or implied, No operational assessments have been made by DPA Auctions on this item, it has been photographed ONLY.



### #136 - Bulldog Jacks (DR1341)

Bulldog Jacks (DR1341), (5) Bulldog tongue jacks and brackets. Notes: Item Location: Evansville, WI 53536 Equipment Sold "AS IS, WHERE IS": All equipment/property is sold "AS IS, WHERE IS" with no warranty or guarantees, expressed or implied, No operational assessments have been made by DPA Auctions on this item, it has been photographed ONLY.



### #137 - Tool Boxes (DR1342)

Tool Boxes (DR1342), (2) 40" side mount tool boxes. Notes: Item Location: Evansville, WI 53536 Equipment Sold "AS IS, WHERE IS": All equipment/property is sold "AS IS, WHERE IS" with no warranty or guarantees, expressed or implied, No operational assessments have been made by DPA Auctions on this item, it has been photographed ONLY.



### #138 - Poly Shuttles (DR1345)

Poly Shuttles (DR1345), (2) 220 gallon poly shuttle tanks, electric pumps and meters on both. Notes: Item Location: Dodgeville, WI 53533 Equipment Sold "AS IS, WHERE IS": All equipment/property is sold "AS IS, WHERE IS" with no warranty or guarantees, expressed or implied, No operational assessments have been made by DPA Auctions on this item, it has been photographed ONLY.



### #139 - Poly Shuttles (DR1346)

Poly Shuttles (DR1346), (2) 220 gallon poly shuttle tanks, electric pumps and meters on both. Notes: Item Location: Dodgeville, WI 53533 Equipment Sold "AS IS, WHERE IS": All equipment/property is sold "AS IS, WHERE IS" with no warranty or guarantees, expressed or implied, No operational assessments have been made by DPA Auctions on this item, it has been photographed ONLY.



### #140 - Poly Shuttles (DR1347)

Poly Shuttles (DR1347), (3) 220 gallon poly shuttle tanks, electric pumps and meters on all, except 1 has NO METER. Notes: Item Location: Dodgeville, WI 53533 Equipment Sold "AS IS, WHERE IS": All equipment/property is sold "AS IS, WHERE IS" with no warranty or guarantees, expressed or implied, No operational assessments have been made by DPA Auctions on this item, it has been photographed ONLY.



### #141 - 2008 Terra Gator 8204 Dry Floater (NJP1390)

2008 Terra Gator 8204 Dry Floater (NJP1390), Cat diesel engine, Terra Shift transmission, air conditioning, heat, Am/Fm radio, New Leader L3020 G4 dry spreader box, twin spinner, all hydraulic, electric roll over tarp, Good Year 48x31.00R20 front tires, PrimeX 66x43.00-25 rear tires, EZ Steer, Cab Camera, Raven Viper Pro monitor, lightbar, slingshot field hub, shows 6131 hours. Notes: Transmission issues only moves in one gear. Please call seller for more information. Item Location: Hopkinsville, KY 42240 Equipment Sold "AS IS, WHERE IS": All equipment/property is sold "AS IS, WHERE IS" with no warranty or guarantees, expressed or implied, No operational assessments have been made by DPA Auctions on this item, it has been photographed ONLY.



---

**#142 - Komatsu WA500 Payloader (DR1298)**

Komatsu WA500 Payloader (DR1298), diesel engine, shuttle drive transmission, steering wheel AND joystick steering, Loadrite Pro scale system, power windows, cab heat/air conditioning, rear counter weight, 11' hydraulic front bucket, 29.5-25 hard rock tires, shows 8875 hours. Notes: Scale system is not currently hook up. Item Location: Woodstock, IL 60098 Equipment Sold "AS IS, WHERE IS": All equipment/property is sold "AS IS, WHERE IS" with no warranty or guarantees, expressed or implied, No operational assessments have been made by DPA Auctions on this item, it has been photographed ONLY.



---

**#143 - Cat 977L Track Loader (DR1299)**

Cat 977L Track Loader (DR1299), diesel engine, powershift drive, 18" grousers, 8' front tooth bucket, shows 4214 hours. Notes: Good running loader. Seller believes hours to be actual, he is second owner. Batteries are removed for winter in the shop. One cab glass is missing, have in shop and will be installed. Item Location: Woodstock, IL 60098 Equipment Sold "AS IS, WHERE IS": All equipment/property is sold "AS IS, WHERE IS" with no warranty or guarantees, expressed or implied, No operational assessments have been made by DPA Auctions on this item, it has been photographed ONLY.



---

**#144 - Raven ISO (DR1380)**

Raven ISO (DR1380), ISO application kit, includes wiring harness. Notes: Item Location: Blue Earth, MN 56013 Equipment Sold "AS IS, WHERE IS": All equipment/property is sold "AS IS, WHERE IS" with no warranty or guarantees, expressed or implied, No operational assessments have been made by DPA Auctions on this item, it has been photographed ONLY.



---

**#145 - 2006 GMC Sierra 1500 Crew Cab (AL635)**

2006 GMC Sierra 1500 Crew Cab (AL635), 8 cylinder engine, automatic transmission, am/FM radio, CD player, power windows, locks, and mirrors, Goodyear Wrangler tires, heat/ac, cruise control, dual climate control, anti-lock brakes, dual airbags, airbag deactivation, white exterior, pewter interior, aluminized stainless steel muffler and tailpipe, four wheel drive, PASSlock II, rear bench, theft deterrent system, winch-type mounted under frame at rear, Solar-Ray light tinted, bed liner, bed cover, shows 133,275 miles. Notes: Financing is available for this vehicle. Item Location: Gretna, NE 68028 Equipment Sold "AS IS, WHERE IS": All equipment/property is sold "AS IS, WHERE IS" with no warranty or guarantees, expressed or implied, No operational assessments have been made by DPA Auctions on this item, it has been photographed ONLY.



---

**#146 - Raven Sidekick (DR1336)**

Raven Sidekick (DR1336), (2) Raven Sidekick monitors, (3) complete wiring harness, (1) motor, tote of #140 tips. Notes: Item Location: Clinton, WI 53525 Equipment Sold "AS IS, WHERE IS": All equipment/property is sold "AS IS, WHERE IS" with no warranty or guarantees, expressed or implied, No operational assessments have been made by DPA Auctions on this item, it has been photographed ONLY.



---

**#147 - 2003 Freightliner (DR1300 Unit 31)**

2003 Freightliner (DR1300 Unit 31), Detroit diesel engine, 10 speed transmission, tandem axle full screw day cab, air ride suspension, air slide 5th wheel, air conditioning, cruise control, air dump valve, AM/FM CD radio, 22.5 tires, outside aluminum wheels, shows 618,134 miles. Notes: Left front hood is CRACKED hinge is loose. Item Location: Clinton, WI 53525 Equipment Sold "AS IS, WHERE IS": All equipment/property is sold "AS IS, WHERE IS" with no warranty or guarantees, expressed or implied, No operational assessments have been made by DPA Auctions on this item, it has been photographed ONLY.



---

**#148 - 2003 Freightliner (DR1301 Unit 32)**

2003 Freightliner (DR1301 Unit 32), Detroit diesel engine, 10 speed transmission, tandem axle full screw day cab, air ride suspension, air slide 5th wheel, air conditioning, cruise control, air dump valve, 22.5 tires, outside aluminum wheels, shows 681,358 miles. Notes: Item Location: Clinton, WI 53525 Equipment Sold "AS IS, WHERE IS": All equipment/property is sold "AS IS, WHERE IS" with no warranty or guarantees, expressed or implied, No operational assessments have been made by DPA Auctions on this item, it has been photographed ONLY.



---

**#149 - Ottawa Shag Truck (DR1306 Unit D17)**

Ottawa Shag Truck (DR1306 Unit D17), NON RUNNER, diesel engine, automatic transmission, hydraulic 5th wheel, 22.5 tires, will be for parts. Notes: The spotter has NO TITLE Item Location: Clinton, WI 53525 Equipment Sold "AS IS, WHERE IS": All equipment/property is sold "AS IS, WHERE IS" with no warranty or guarantees, expressed or implied, No operational assessments have been made by DPA Auctions on this item, it has been photographed ONLY.



**#150 - 2002 Chevy 2500HD (DR1302 Unit 02-5)**

2002 Chevy 2500HD (DR1302 Unit 02-5), Duramax diesel engine, automatic transmission, quad cab, 4X4, rear receiver hitch, aftermarket tailgate, AM/FM CD radio, air conditioning, tilt wheel, cruise control, 265/75R16 tires. Notes: Drivers door panel is GONE. Will need battery. Item Location: Clinton, WI 53525 Equipment Sold "AS IS, WHERE IS": All equipment/property is sold "AS IS, WHERE IS" with no warranty or guarantees, expressed or implied, No operational assessments have been made by DPA Auctions on this item, it has been photographed ONLY.

**#151 - 2006 Ford F350 (DR1303 Unit 10-3A)**

2006 Ford F350 (DR1303 Unit 10-3A), Powerstroke diesel engine, automatic transmission, (tranny has NO PARK), extended cab, 4X4, 5th wheel hid-a-ball, rear receiver hitch, power windows & locks, power drivers seat, AM/FM CD radio, cruise control, 275/70R16 tires. Notes: Will need batteries. Has tranny issues NO PARK, emergency brake does work. EGR is disconnected. Item Location: Clinton, WI 53525 Equipment Sold "AS IS, WHERE IS": All equipment/property is sold "AS IS, WHERE IS" with no warranty or guarantees, expressed or implied, No operational assessments have been made by DPA Auctions on this item, it has been photographed ONLY.

**#153 - 2008 Chevy Silverado (DR1305 Unit 08-10C)**

2008 Chevy Silverado (DR1305 Unit 08-10C), 5.3 liter gas engine, automatic transmission, crew cab, 4X4, Z71 package, rear receiver hitch, power windows & locks, power drivers seat, tonneau bed cover, AM/FM CD radio, cruise control, 265/70R17 tires, shows 214,243 miles. Notes: Item Location: Clinton, WI 53525 Equipment Sold "AS IS, WHERE IS": All equipment/property is sold "AS IS, WHERE IS" with no warranty or guarantees, expressed or implied, No operational assessments have been made by DPA Auctions on this item, it has been photographed ONLY.

**#154 - 2006 Ford F550 (DR1337 Unit 18-9L)**

2006 Ford F550 (DR1337 Unit 18-9L), cab/chassis, flatbed DOES NOT SELL, Powerstroke diesel engine, (engine has issues), automatic transmission, AM/FM CD radio, cruise control, 225/70R19.5 tires, shows 139,438 miles. Notes: Flatbed IS NOT SELLING. Engine has issues, injectors are bad, leaks coolant. Item Location: Clinton, WI 53525 Equipment Sold "AS IS, WHERE IS": All equipment/property is sold "AS IS, WHERE IS" with no warranty or guarantees, expressed or implied, No operational assessments have been made by DPA Auctions on this item, it has been photographed ONLY.

**#155 - 2012 CaseIH 3330 Sprayer (DR1432 Unit 27580)**

2012 CaseIH 3330 Sprayer (DR1432 Unit 27580), diesel engine, hydrostatic drive, 1000 gallon stainless steel liquid system, AIM Command, 90' boom, Raven Viper Pro controller, Raven Phoenix 200 receiver, Raven light bar, stainless steel chemical inductor, cab cam, AM/FMCD radio, cab heat/air conditioning, 380/90R46 row crop tires, shows 4907 hours. Notes: Very clean sprayer. Flotation tires for this sprayer also sell separately on this auction. Item Location: Russellville, KY 42276 Equipment Sold "AS IS, WHERE IS": All equipment/property is sold "AS IS, WHERE IS" with no warranty or guarantees, expressed or implied, No operational assessments have been made by DPA Auctions on this item, it has been photographed ONLY.

**#156 - 2005 Ford Super Duty F-250 Crew Cab (AL636)**

2005 Ford Super Duty F-250 Crew Cab (AL636), 8 cylinder engine, 5-speed manual transmission, am/FM radio, CD player, power windows, locks, and mirrors, Goodyear Wrangler tires, heat/ac, cruise control, bed liner, 2-ton mechanical jack, auxiliary power point, Block Beam, 130 amp alternator, 7/4 pin combination connector, HD gas shock absorbers, mono-beam front axle with coil springs, power steering, removable locking tailgate with black handle, stationary elevated engine idle control, trailer brake wiring kit with controller, shows 81,133 miles. Notes: Financing is available for this vehicle. Item Location: Gretna, NE 68028 Equipment Sold "AS IS, WHERE IS": All equipment/property is sold "AS IS, WHERE IS" with no warranty or guarantees, expressed or implied, No operational assessments have been made by DPA Auctions on this item, it has been photographed ONLY.

**#157 - 2010 Case IH SDX40 Drill (DR1271)**

2010 Case IH SDX40 Drill (DR1271), 40' no till drill, 22" blades, 64 openers on 7.5" spacing, Pro 600 monitor, individual row sensors, walking tandem axles, hydraulic fold, walking tandems on wings, hydraulic markers, SN YAS003282, 2010 Case IH 2330 Cart, 330 bushel Precision Air commodity cart, dual hopper, swing out auger. Notes: Item Location: Blue Earth, MN 56013 Equipment Sold "AS IS, WHERE IS": All equipment/property is sold "AS IS, WHERE IS" with no warranty or guarantees, expressed or implied, No operational assessments have been made by DPA Auctions on this item, it has been photographed ONLY.

**#158 - Capacity Shag Truck (DR1307 Unit 95-6)**

Capacity Shag Truck (DR1307 Unit 95-6), model 143600, NON RUNNER, Cummins diesel engine, automatic transmission, air brakes, hydraulic 5th wheel, 22.5 tires, will be for parts. Notes: The spotter has NO TITLE Item Location: Clinton, WI 53525 Equipment Sold "AS IS, WHERE IS": All equipment/property is sold "AS IS, WHERE IS" with no warranty or guarantees, expressed or implied, No operational assessments have been made by DPA Auctions on this item, it has been photographed ONLY.



### #159 - 1996 John Deere 5500 (DR1379)

1996 John Deere 5500 (DR1379), MFWD, diesel engine, syncro transmission 9 forward, 3 reverse, rear 3 point, 540 PTO, dual hydraulic outlets, John Deere 540 hydraulic front end loader, 15.5-36 rear tires 90%, 12.4-24 front tires 20%, shows 7490 hours. Notes: Item Location: Posen, MI 49776 Equipment Sold "AS IS, WHERE IS": All equipment/property is sold "AS IS, WHERE IS" with no warranty or guarantees, expressed or implied, No operational assessments have been made by DPA Auctions on this item, it has been photographed ONLY.



### #162 - 1995 International 4900 (DR1297)

1995 International 4900 (DR1297), DT466 diesel engine, 6 speed transmission, single axle, 24' steel bed, 30' hydraulic conveyor, dual hydraulic outriggers, air brakes, AM/FM radio, air conditioning, shows 160,737 miles. Notes: Good running truck and all hydraulics work as they should. Item Location: Janesville, WI 53548 Equipment Sold "AS IS, WHERE IS": All equipment/property is sold "AS IS, WHERE IS" with no warranty or guarantees, expressed or implied, No operational assessments have been made by DPA Auctions on this item, it has been photographed ONLY.



### #163 - 1973 Fruehauf Tanker (DR1317)

1973 Fruehauf Tanker (DR1317), 7500 gallon stainless steel conical liquid transport trailer, single compartment, tandem axle, spring suspension, front & rear fenders, 24.5 tires. Notes: Baffles and pump and motor can be added, contact seller for details and cost. Item Location: Chilton, WI 53014 Equipment Sold "AS IS, WHERE IS": All equipment/property is sold "AS IS, WHERE IS" with no warranty or guarantees, expressed or implied, No operational assessments have been made by DPA Auctions on this item, it has been photographed ONLY.



### #164 - 1985 Mack (DR1316 Unit 91-1)

1985 Mack (DR1316 Unit 91-1), model 686ST, cab/chassis, Mack diesel engine, Mackitorque transmission, day cab, tandem axle full screw, Mack rears, 18' of frame behind the cab, air conditioning, AM/FM cassette radio, 22.5 tires, shows 761,635 miles. Notes: Item Location: Janesville, WI 53545 Equipment Sold "AS IS, WHERE IS": All equipment/property is sold "AS IS, WHERE IS" with no warranty or guarantees, expressed or implied, No operational assessments have been made by DPA Auctions on this item, it has been photographed ONLY.



### #165 - 1990 Ottawa Shag Truck (DR1308 Unit Yard Dog)

1990 Ottawa Shag Truck (DR1308 Unit Yard Dog), NON RUNNER, Cat diesel engine, automatic transmission, air brakes, hydraulic 5th wheel, 22.5 tires, will be for parts. Notes: The spotter has NO TITLE Item Location: Clinton, WI 53525 Equipment Sold "AS IS, WHERE IS": All equipment/property is sold "AS IS, WHERE IS" with no warranty or guarantees, expressed or implied, No operational assessments have been made by DPA Auctions on this item, it has been photographed ONLY.



### #166 - 2005 Ford F350 (DR1381 Unit 9864)

2005 Ford F350 (DR1381 Unit 9864), 6.0 diesel engine, (blown head gasket), 6 speed transmission, 9' steel stake bed, AM/FN radio, cruise control, shows 179,721 miles. Notes: Truck runs but has BLOWN HEAD GASKET. Item Location: El Campo, TX 77437 Equipment Sold "AS IS, WHERE IS": All equipment/property is sold "AS IS, WHERE IS" with no warranty or guarantees, expressed or implied, No operational assessments have been made by DPA Auctions on this item, it has been photographed ONLY.



### #167 - 2006 Ford F-350 Lariat Crew Cab (AL637)

2006 Ford F-350 Lariat Crew Cab (AL637), 8 cylinder engine, automatic transmission, am/FM radio, CD player, power windows, locks, and mirrors, Goodyear Wrangler tires, heat/ac, cruise control, bed liner, 4-ton hydraulic jack, 2 speed transfer case with manual locking front hubs, power 4 wheel disc brakes, rear auxiliary springs, removable locking tailgate with black handle, stationary elevated engine idle control, trailer tow package, trailer brake wiring kit with out controller, shows 107,365 miles. Notes: Financing is available for this vehicle. Item Location: Gretna, NE 68028 Equipment Sold "AS IS, WHERE IS": All equipment/property is sold "AS IS, WHERE IS" with no warranty or guarantees, expressed or implied, No operational assessments have been made by DPA Auctions on this item, it has been photographed ONLY.



### #168 - 1992 Ford L8000 Spray Truck (ED868)

1992 Ford L8000 Spray Truck (ED868), Cummins engine, automatic 4 speed, HI/LO rear differentials, heat, A/C, radio, 1700 gallon Stainless Steel tank, 120 gallon rinse tank, 60 foot boom, new pump, Trimble field IQ, less 750 monitor, inductor, nozzles 30" spacing, 100% operational, Raven auto rate control, Raven 3 section auto boom control, tires 30%, shows 6045 hours. Notes: Item Location: Waxahachie, TX 75165 Equipment Sold "AS IS, WHERE IS": All equipment/property is sold "AS IS, WHERE IS" with no warranty or guarantees, expressed or implied, No operational assessments have been made by DPA Auctions on this item, it has been photographed ONLY.



---

### #169 - KBH 8 Row Side Dress Machine (ED869)

KBH 8 Row Side Dress Machine (ED869), 800 gallon tank, ground drive pump, unit sold as is, has not ran in 2 seasons. Notes: Item Location: Waxahachie, TX 75165 Equipment Sold "AS IS, WHERE IS": All equipment/property is sold "AS IS, WHERE IS" with no warranty or guarantees, expressed or implied, No operational assessments have been made by DPA Auctions on this item, it has been photographed ONLY.



---

### #170 - (96) 3 Way Nozzle Bodies (ED863)

(96) 3 Way Nozzle Bodies (ED863), total of 96 3 way nozzle bodies, 87 tightener screws, fits 1" wet boom. Notes: Item Location: Spencer, IA 51301 Equipment Sold "AS IS, WHERE IS": All equipment/property is sold "AS IS, WHERE IS" with no warranty or guarantees, expressed or implied, No operational assessments have been made by DPA Auctions on this item, it has been photographed ONLY.



---

### #171 - 8" Stand Pipe (ED861)

8" Stand Pipe (ED861), 30' X 8" stand pipe on wheels, manual hand crank to raise and lower. Notes: Item Location: Spencer, IA 51301 Equipment Sold "AS IS, WHERE IS": All equipment/property is sold "AS IS, WHERE IS" with no warranty or guarantees, expressed or implied, No operational assessments have been made by DPA Auctions on this item, it has been photographed ONLY.



---

### #172 - Nuhn Pump (ED860)

Nuhn Pump (ED860), 8' depth, 6" Nuhn pump with hose that hooks to stand pipe, works good with no leaks. Notes: Item Location: Spencer, IA 51301 Equipment Sold "AS IS, WHERE IS": All equipment/property is sold "AS IS, WHERE IS" with no warranty or guarantees, expressed or implied, No operational assessments have been made by DPA Auctions on this item, it has been photographed ONLY.



---

### #173 - 1999 Titan Trailer (ED862)

1999 Titan Trailer (ED862), 30 X 7 Titan livestock trailer. Notes: Item Location: Spencer, IA 51301 Equipment Sold "AS IS, WHERE IS": All equipment/property is sold "AS IS, WHERE IS" with no warranty or guarantees, expressed or implied, No operational assessments have been made by DPA Auctions on this item, it has been photographed ONLY.



---

### #174 - Flotation Tires (DR1433)

Flotation Tires (DR1433), (4) 650/65R38 flotation tires and wheels, 2-are Michelin, 2-are Goodyear, came off the 2010 Vector 300 Dry Machine selling separately on this auction, will also fit the 2012 CaseIH 3330 Sprayer selling separately on this auction as well. Notes: Item Location: Russellville, KY 42276 Equipment Sold "AS IS, WHERE IS": All equipment/property is sold "AS IS, WHERE IS" with no warranty or guarantees, expressed or implied, No operational assessments have been made by DPA Auctions on this item, it has been photographed ONLY.



---

### #176 - 1963 Fruehauf Tanker Trailer (DR1318)

1963 Fruehauf Tanker Trailer (DR1318), 6935 gallon stainless steel conical liquid transport trailer, single compartment, tandem axle, spring suspension, front & rear fenders, top cat walk, 1UND14669024.5 tires. Notes: Baffles and pump and motor can be added, contact seller for details and cost. Item Location: Chilton, WI 53014 Equipment Sold "AS IS, WHERE IS": All equipment/property is sold "AS IS, WHERE IS" with no warranty or guarantees, expressed or implied, No operational assessments have been made by DPA Auctions on this item, it has been photographed ONLY.



---

### #177 - Ottawa Shag Truck (DR1309)

Ottawa Shag Truck (DR1309), NON RUNNER, NO engine, automatic transmission, hydraulic 5th wheel, 22.5 tires, will be for parts. Notes: The spotter has NO TITLE Item Location: Clinton, WI 53525 Equipment Sold "AS IS, WHERE IS": All equipment/property is sold "AS IS, WHERE IS" with no warranty or guarantees, expressed or implied, No operational assessments have been made by DPA Auctions on this item, it has been photographed ONLY.



### #178 - 2014 Chevrolet Silverado 2500HD 4WD Crew Cab (AL612)

2014 Chevrolet Silverado 2500HD 4WD Crew Cab (AL612), 8 cylinder engine, Allison automatic transmission, am/FM radio, CD player, power windows, locks, and mirrors, heat/AC, blue granite metallic, includes electronic trailer sway control and hill start assist, rear 60/40 folding bench, exhaust aluminized stainless-steel muffler and tailpipe, 4 wheel antilock, front chrome includes chrome bumper and caps, 35mm twin tube shock absorbers and 36mm front stabilizer bar, cruise control, back up camera in rear view mirror, shows 102,071 miles. Notes: Financing is available for this vehicle. Item Location: Gretna, NE 68028 Equipment Sold "AS IS, WHERE IS": All equipment/property is sold "AS IS, WHERE IS" with no warranty or guarantees, expressed or implied, No operational assessments have been made by DPA Auctions on this item, it has been photographed ONLY.



### #179 - NH3 Nurse Tank (PZ1334, Unit 32)

NH3 Nurse Tank (PZ1334, Unit 32), American Tank & Welding 1450 gallon NH3 nurse tank, water tank, 5th wheel gear, flotation tires, Ntip inspected and certified for service, no data plate. Notes: Item Location: Allerton, IL 61810 Equipment Sold "AS IS, WHERE IS": All equipment/property is sold "AS IS, WHERE IS" with no warranty or guarantees, expressed or implied, No operational assessments have been made by DPA Auctions on this item, it has been photographed ONLY.



### #180 - NH3 Nurse Tank (PZ1335, Unit 24)

NH3 Nurse Tank (PZ1335, Unit 24), American Tank & Welding 1450 gallon NH3 nurse tank, water tank, 5th wheel gear, 14L-16.1 flotation tires, data plate with R Stamp weld repair plate, tank certified for service. Notes: Item Location: Allerton, IL 61810 Equipment Sold "AS IS, WHERE IS": All equipment/property is sold "AS IS, WHERE IS" with no warranty or guarantees, expressed or implied, No operational assessments have been made by DPA Auctions on this item, it has been photographed ONLY.



### #181 - Layco Dry Blender (PZ1333)

Layco Dry Blender (PZ1333), Layco 6 ton vertical stainless steel dry blender, open top, approx. 60' stainless steel loadout conveyor, scales, digital readout. Notes: This blender must be removed by May 1st, 2019 with NO exceptions. Dismantle, removal and transportation is at the expense, risk and liability of the buyer. Item Location: Cabery, IL 60919 Equipment Sold "AS IS, WHERE IS": All equipment/property is sold "AS IS, WHERE IS" with no warranty or guarantees, expressed or implied, No operational assessments have been made by DPA Auctions on this item, it has been photographed ONLY.



### #182 - 2006 Dodge Crew Cab Pickup (PZ1332)

2006 Dodge Crew Cab Pickup (PZ1332), 4x4, Cummins diesel engine, automatic transmission, air conditioning, heat, Am/Fm CD stereo, cruise control, power windows & locks, power drivers seat, running boards, aluminum tool box, custom rims, shows 170,728 miles. Notes: Item Location: Paris, IL 61944 Equipment Sold "AS IS, WHERE IS": All equipment/property is sold "AS IS, WHERE IS" with no warranty or guarantees, expressed or implied, No operational assessments have been made by DPA Auctions on this item, it has been photographed ONLY.



### #183 - 2013 Doyle Top Shot Conveyor (PZ1341)

2013 Doyle Top Shot Conveyor (PZ1341), 2013 Doyle stainless steel dry conveyor, 30" wide belt 3 ply 330# smooth top rubber belting, 12'-6" discharge height, automatic hydraulic belt tensioners, Kubota V1505T 45 hp turbo diesel engine, tandem hydraulic pump, 27 gallon diesel tank, heavy duty gear box drive, hydraulic lift, pintle hitch, super single flotation tires, shows 853 hours. Notes: This unit was in a slight roll over. The frame and hopper is slightly bent. The machine is still in working order and motor and hydraulic system runs great. Item Location: Plano, IA 52581 Equipment Sold "AS IS, WHERE IS": All equipment/property is sold "AS IS, WHERE IS" with no warranty or guarantees, expressed or implied, No operational assessments have been made by DPA Auctions on this item, it has been photographed ONLY.



### #184 - 2003 John Deere 1790 CCS 16/31 Row Planter (DL428)

2003 John Deere 1790 CCS 16/31 Row Planter (DL428), Central Commodity System 2 50 b.u. tanks, tri-fold markers w/ 16" notched disk, depth gauging band and control independent of planter lift, ground drive, 2pt hitch, Ag Leader system with SeedCommand clutches on all 31 rows, Tru-Vee openers with walking gauge wheels, rubber tire closing wheels, vacuum level sensor for SeedStar monitor system, regular seed tube w/ AccuCount sensor, pneumatic down force system, steel scrapers for Tru-Vee openers (put on new last year), unit mounted coulter w/ 0.63" 25 fluted blades, 16 corn/bean plates, main frame tires 11x22.5. Notes: Machine is always shedded. Item Location: Marceline, MO 64658 Equipment Sold "AS IS, WHERE IS": All equipment/property is sold "AS IS, WHERE IS" with no warranty or guarantees, expressed or implied, No operational assessments have been made by DPA Auctions on this item, it has been photographed ONLY.



---

### #185 - 2012 Total Control System Meter (ED872)

2012 Total Control System Meter (ED872), used total control system meter, Model 682-15AF2AT. Notes: Item Location: Hawarden, IA 51023 Equipment Sold "AS IS, WHERE IS": All equipment/property is sold "AS IS, WHERE IS" with no warranty or guarantees, expressed or implied, No operational assessments have been made by DPA Auctions on this item, it has been photographed ONLY.



---

### #186 - 2000 Case IH MX270 Magnum Tractor (ED871)

2000 Case IH MX270 Magnum Tractor (ED871), 480 X 46 Michelin Radial tires with duals, front duals spaced on 30" centers, MFD with 380 X 34 Michelin tires, 4 hydraulic remotes, automatic climate control for AC and heat, 1000 PTO, category 3 3-point with 3rd link, hammer strap on draw bar, shows 9662.8 hours. Notes: Item Location: Butterfield, MN 56120 Equipment Sold "AS IS, WHERE IS": All equipment/property is sold "AS IS, WHERE IS" with no warranty or guarantees, expressed or implied, No operational assessments have been made by DPA Auctions on this item, it has been photographed ONLY.



---

### #187 - USC LP800 Seed Treater (DL471)

USC LP800 Seed Treater (DL471), USC LP800 seed treater, stainless steel mix tank, control panel. Notes: Item Location: Galena, KS 66739 Equipment Sold "AS IS, WHERE IS": All equipment/property is sold "AS IS, WHERE IS" with no warranty or guarantees, expressed or implied, No operational assessments have been made by DPA Auctions on this item, it has been photographed ONLY.



---

### #188 - 2014 Tyler Dry Tender Box (PZ1353)

2014 Tyler Dry Tender Box (PZ1353), 2014 Tyler MT-24 Multimax 409 stainless steel dry tender box, 8" horizontal auger, 10" side discharge hydraulic swiveling auger, 10" x 16' long stainless steel unloading tube and screw, hydraulic drive package, auger operating controls located on rear passenger side, large clean out doors under each hopper, rear clean out door. Notes: Unit was laid on its side and repaired in a professional shop. Running gear NOT included. NO ROLL TARP. Item Location: Harritown, IL 62537 Equipment Sold "AS IS, WHERE IS": All equipment/property is sold "AS IS, WHERE IS" with no warranty or guarantees, expressed or implied, No operational assessments have been made by DPA Auctions on this item, it has been photographed ONLY.



---

### #189 - 2010 Ford F-150 4WD SuperCrew (AL618)

2010 Ford F-150 4WD SuperCrew (AL618), 8 cylinder engine, automatic transmission, am/FM radio, CD player, power windows, locks, and seats, heat/ac, cruise control, bed liner, bed cover, dual climate control, stability control, traction control, anti-lock brakes, dual airbags, side air bag system, and airbag deactivation, white exterior and camel interior, four full-size doors, 155-amp alternator, 2-ton jack, easy fuel cap less fuel filler system, long-spindle double wishbone front suspension with coil over shock IFS, removable tailgate with key lock and lift assist, SOS post crash alert system, four pickup box tie-down hooks, 2nd row B-pillar grab handles, leaf spring rear suspension with 2-stage variable rear springs, SecuriLock anti-theft ignition, trailer sway control, shows 133,933 miles. Notes: Financing is available for this vehicle. Item Location: Gretna, NE 68028 Equipment Sold "AS IS, WHERE IS": All equipment/property is sold "AS IS, WHERE IS" with no warranty or guarantees, expressed or implied, No operational assessments have been made by DPA Auctions on this item, it has been photographed ONLY.



---

### #190 - 2004 Doyle Blender (DR1222)

2004 Doyle Blender (DR1222), 8 ton stainless steel dry fertilizer blender, digital scale head (rebuilt in 2016), 40HP electric drive motor, 30' stainless steel loadout conveyor has 15HP electric drive motor. Notes: Blender was used in 2018, is removed ready to load. Loading is buyer responsibility. Local crane is available. Item Location: Murray, KY 42071 Equipment Sold "AS IS, WHERE IS": All equipment/property is sold "AS IS, WHERE IS" with no warranty or guarantees, expressed or implied, No operational assessments have been made by DPA Auctions on this item, it has been photographed ONLY.



---

### #191 - 1994 Chevrolet Kodiak Service Truck (DR1223)

1994 Chevrolet Kodiak Service Truck (DR1223), Cat diesel engine, 5 speed transmission, 2 speed rear axle, Baker 16' 10 door service box, on board air compressor w/ Kohler 13HP gas engine, dual retractable hose reels, on board tire fluid tank & pump, 1,600lb capacity Tommy Lift gate, rear pintle hitch, 22.5 tires, 299,000 miles. Notes: Item Location: Murray, KY 42071 Equipment Sold "AS IS, WHERE IS": All equipment/property is sold "AS IS, WHERE IS" with no warranty or guarantees, expressed or implied, No operational assessments have been made by DPA Auctions on this item, it has been photographed ONLY.



---

### #192 - 1989 Mack Turbo Intercooler Truck (PZ9407)

1989 Mack Turbo Intercooler Truck (PZ9407), diesel engine, 10 speed transmission, heat, Am/Fm cassette radio, single axle, 11R22.5 tires, shows 440,780 miles. Notes: Runs and drives. NEW batteries, NEW brake lights, NEW brake lines, NEW head lights, NEW master cylinder. Item Location: Mediapolis, IA 52637 Equipment Sold "AS IS, WHERE IS": All equipment/property is sold "AS IS, WHERE IS" with no warranty or guarantees, expressed or implied, No operational assessments have been made by DPA Auctions on this item, it has been photographed ONLY.



---

### #193 - Cat 936 Loader (DR0638)

Cat 936 Loader (DR0638), Cat diesel engine, hydrostatic 3 speed shuttle drive, cab heat, 20.5-25 tires, shows 11,265 hours. Notes: Item Location: Howe, IN 46746 Equipment Sold "AS IS, WHERE IS": All equipment/property is sold "AS IS, WHERE IS" with no warranty or guarantees, expressed or implied, No operational assessments have been made by DPA Auctions on this item, it has been photographed ONLY.



---

### #194 - AirMax 2000 Air Bed (PZ1345)

AirMax 2000 Air Bed (PZ1345), Soilection AirMax 2000 dry air flow system, 70' stainless steel boom, 3 bin with micronutrient rear bin, twin apron floor chain, roll over tarp. Notes: Running gear NOT included. Item Location: Hartley, IA 51346 Equipment Sold "AS IS, WHERE IS": All equipment/property is sold "AS IS, WHERE IS" with no warranty or guarantees, expressed or implied, No operational assessments have been made by DPA Auctions on this item, it has been photographed ONLY.



---

### #195 - Rapat Belt Conveyor (PZ1343)

Rapat Belt Conveyor (PZ1343), Rapat model F4530SPD Series F 45' x 30" enclosed belt conveyor, Emerson 10 hp electric motor, manual winch height adjustment, portable, flotation tires. Notes: Item Location: Hartley, IA 51346 Equipment Sold "AS IS, WHERE IS": All equipment/property is sold "AS IS, WHERE IS" with no warranty or guarantees, expressed or implied, No operational assessments have been made by DPA Auctions on this item, it has been photographed ONLY.



---

### #196 - Layco Belt Conveyor (PZ1344)

Layco Belt Conveyor (PZ1344), Layco 40' x 24" belt conveyor, Honda GX630 electric start gas engine, hydraulic height adjustment, portable, 7-14.5 tires. Notes: Item Location: Hartley, IA 51346 Equipment Sold "AS IS, WHERE IS": All equipment/property is sold "AS IS, WHERE IS" with no warranty or guarantees, expressed or implied, No operational assessments have been made by DPA Auctions on this item, it has been photographed ONLY.



---

### #197 - 2001 Sterling Liquid Truck (PZ1342)

2001 Sterling Liquid Truck (PZ1342), Detroit Series 60 diesel engine, 7 speed transmission, heat, cruise control, single axle, 1800 gallon stainless steel liquid nurse tank, Briggs 6.5 hp gas engine, 3" Hypro pump, 11R24.5 tires, shows 242,592 miles. Notes: Item Location: Hartley, IA 51346 Equipment Sold "AS IS, WHERE IS": All equipment/property is sold "AS IS, WHERE IS" with no warranty or guarantees, expressed or implied, No operational assessments have been made by DPA Auctions on this item, it has been photographed ONLY.



---

### #198 - Case IH 700 Pro (DR1392)

Case IH 700 Pro (DR1392), Pro 700 monitor on Version 31, large tractor which is compatible with any Case IH or New Holland large MFWD or 4WD tractor. Any CNH dealer can download new software on the 700 Pro for any tractor, combine, or sprayer application. This unit includes ram bar mount for Case IH AFS & New Holland Intelliview ready equipment. Notes: Shipping costs are \$20 via UPS in Continental US. Item Location: Morris, MN 56267 Equipment Sold "AS IS, WHERE IS": All equipment/property is sold "AS IS, WHERE IS" with no warranty or guarantees, expressed or implied, No operational assessments have been made by DPA Auctions on this item, it has been photographed ONLY.



---

### #199 - 2018 Case IH 700 Pro (DR1393)

2018 Case IH 700 Pro (DR1393), Pro 700 monitor on Version 31, large tractor which is compatible with any Case IH or New Holland large MFWD or 4WD tractor. Any CNH dealer can download new software on the 700 Pro for any tractor, combine, or sprayer application. This unit includes ram bar mount for Case IH AFS & New Holland Intelliview ready equipment. Notes: Shipping costs are \$20 via UPS in Continental US. Item Location: Morris, MN 56267 Equipment Sold "AS IS, WHERE IS": All equipment/property is sold "AS IS, WHERE IS" with no warranty or guarantees, expressed or implied, No operational assessments have been made by DPA Auctions on this item, it has been photographed ONLY.



**#200 - 2009 Honda Accord (AL623)**

2009 Honda Accord (AL623), V6 cylinder engine, 5-speed automatic transmission, am/FM radio, CD player, power windows, locks, and mirrors, P225/50VR17 all-season tires, heat/ac, cruise control, sun roof, green exterior, black interior, 4-way pwr passenger seat, auxiliary input jack, speed-sensitive column control, subwoofer, (2) 12V pwr outlets, 4-wheel anti-lock brake system, electronic brake distribution, active noise cancellation, blue ambient console lighting, heated pwr mirrors, chrome dual exhaust finisher, drive-by-wire throttle, emergency trunk release, immobilizer theft-deterrent system, MPS/WMA playback, 270-watt premium am/FM stereo with 6 disc in dash CD changer, 6 speakers, chrome door handles, chrome window trim, compact spare tire, illuminated lockable glove box, leather trimmed heated front bucket seats, security system, shows 118,363 miles. Notes: Financing is available for this vehicle. Item Location: Gretna, NE 68028 Equipment Sold "AS IS, WHERE IS": All equipment/property is sold "AS IS, WHERE IS" with no warranty or guarantees, expressed or implied, No operational assessments have been made by DPA Auctions on this item, it has been photographed ONLY.

**#201 - 2018 Case IH 700 Pro (DR1394)**

2018 Case IH 700 Pro (DR1394), Pro 700 monitor on Version 31, large tractor which is compatible with any Case IH or New Holland large MFWD or 4WD tractor. Any CNH dealer can download new software on the 700 Pro for any tractor, combine, or sprayer application. This unit includes ram bar mount for Case IH AFS & New Holland Intelliview ready equipment. Notes: Shipping costs are \$20 via UPS in Continental US. Item Location: Morris, MN 56267 Equipment Sold "AS IS, WHERE IS": All equipment/property is sold "AS IS, WHERE IS" with no warranty or guarantees, expressed or implied, No operational assessments have been made by DPA Auctions on this item, it has been photographed ONLY.

**#202 - 2018 Case IH 700 Pro (DR1395)**

2018 Case IH 700 Pro (DR1395), Pro 700 monitor on Version 31, large tractor which is compatible with any Case IH or New Holland large MFWD or 4WD tractor. Any CNH dealer can download new software on the 700 Pro for any tractor, combine, or sprayer application. This unit includes ram bar mount for Case IH AFS & New Holland Intelliview ready equipment. Notes: Shipping costs are \$20 via UPS in Continental US. Item Location: Morris, MN 56267 Equipment Sold "AS IS, WHERE IS": All equipment/property is sold "AS IS, WHERE IS" with no warranty or guarantees, expressed or implied, No operational assessments have been made by DPA Auctions on this item, it has been photographed ONLY.

**#203 - Trimble CFX-750 Monitor (DR1396)**

Trimble CFX-750 Monitor (DR1396), RTK & Glonass unlocked. This monitor is unlocked for DGPS, Omnistar XP/HP, Centerpoint RTX, RTK, & Glonass. It is on Firmware Version 7.77 and has 564 total hours of runtime. It includes power cables, antenna cable, ram mount, and ag25. Notes: Shipping costs are \$20 via UPS in Continental US. Item Location: Morris, MN 56267 Equipment Sold "AS IS, WHERE IS": All equipment/property is sold "AS IS, WHERE IS" with no warranty or guarantees, expressed or implied, No operational assessments have been made by DPA Auctions on this item, it has been photographed ONLY.

**#204 - 2018 New Holland 372 Monitor (DR1397)**

2018 New Holland 372 Monitor (DR1397), unlocked to RTK with NO radio. This 372 can receive Omnistar, Centerpoint RTK, RTX, and Glonass signals. This receiver is currently on Version 8.30 and is compatible with any Case IH AFS & New Holland Intelliview tractors, combines or sprayers. This unit includes mounting bracket for Case IH AFS & New Holland Intelliview ready tractors. Notes: Shipping costs are \$20 via UPS in Continental US. Item Location: Morris, MN 56267 Equipment Sold "AS IS, WHERE IS": All equipment/property is sold "AS IS, WHERE IS" with no warranty or guarantees, expressed or implied, No operational assessments have been made by DPA Auctions on this item, it has been photographed ONLY.

**#205 - 300 Gallon John Deere 7000 Series Front Mount Tank John Deere (JJ115)**

300 Gallon John Deere 7000 Series Front Mount Tank John Deere (JJ115), 300 Gallon Front Mount Tank for 7000 Series John Deere, will fit other models, mounts on weight bracket and frame holes, comes with valve on bottom with short hose and side valve, John Deere Skiles Brand and Cradle. Notes: Item Location: Duncombe, IA 50532 Equipment Sold "AS IS, WHERE IS": All equipment/property is sold "AS IS, WHERE IS" with no warranty or guarantees, expressed or implied, No operational assessments have been made by DPA Auctions on this item, it has been photographed ONLY.

**#206 - Graham Seed Treating System (PZ1350)**

Graham Seed Treating System (PZ1350), Graham G3 1100 seed treating system, 3 - chemical inductors, G3 seed treating applicators. Notes: Item Location: Ruthven, IA 51358 Equipment Sold "AS IS, WHERE IS": All equipment/property is sold "AS IS, WHERE IS" with no warranty or guarantees, expressed or implied, No operational assessments have been made by DPA Auctions on this item, it has been photographed ONLY.

## #208 - 1991 Mack CH613 Liquid Tender Truck (PZ1349)

1991 Mack CH613 Liquid Tender Truck (PZ1349), Mack E7 - 350 diesel engine, Eaton Fuller 9 speed transmission, air conditioning, heat, Am/Fm cassette radio, tandem axle, full screw, air ride suspension, Enduaplas 2800 gallon poly liquid nurse tank, homemade wood I-beam floor, Honda GX390 electric start gas engine, 3" cast iron pump, 3" hose reel with hose, 285/75R24.5 tires, shows 715,329 miles. Notes: Cast iron pump needs to be cleaned out. Item Location: Ruthven, IA 51358 Equipment Sold "AS IS, WHERE IS": All equipment/property is sold "AS IS, WHERE IS" with no warranty or guarantees, expressed or implied, No operational assessments have been made by DPA Auctions on this item, it has been photographed ONLY.



## #209 - 2008 Ford King Ranch Crew Cab Pickup (PZ1347)

2008 Ford King Ranch Crew Cab Pickup (PZ1347), 4x4, 5.4L 3V Triton gas engine, automatic transmission, air conditioning, heat, Am/Fm CD stereo, power windows & locks, cruise control, leather interior, dual power seats, running boards, 275/65R18 tires, shows 224,000 miles, shows 224,564 miles. Notes: Crack in windshield. Item Location: Ruthven, IA 51358 Equipment Sold "AS IS, WHERE IS": All equipment/property is sold "AS IS, WHERE IS" with no warranty or guarantees, expressed or implied, No operational assessments have been made by DPA Auctions on this item, it has been photographed ONLY.



## #210 - 1998 Ag Chem Liquid System (PZ1346)

1998 Ag Chem Liquid System (PZ1346), 1998 Ag Chem 1800 gallon stainless steel liquid system, 80' boom, 60" spacing, 3" pump, 3" reload, 2 poly water tanks. Notes: Item Location: Rossie, IA 51357 Equipment Sold "AS IS, WHERE IS": All equipment/property is sold "AS IS, WHERE IS" with no warranty or guarantees, expressed or implied, No operational assessments have been made by DPA Auctions on this item, it has been photographed ONLY.



## #211 - 2009 Chevrolet Silverado 1500 4WD Ext Cab (AL620)

2009 Chevrolet Silverado 1500 4WD Ext Cab (AL620), 8 cylinder engine, 4-speed automatic transmission, am/FM radio, cd player, power windows, locks, and mirrors, Goodyear tires, heat/ac, cruise control, heated seats, bed liner, stability control, traction control, anti-lock brakes, dual airbags, airbag deactivation, blue exterior, ebony/light titanium interior, 3 passenger front row seating, heavy-duty 600 cold-cranking amps, rear window, manual lumbar control on the driver-side, rear 2-stage multi-leaf springs, rear chrome, StabiliTrak, suspension package, winch-type mounted under frame at rear, adjustable with brake/transmission shift interlock, aluminized stainless-steel muffler and tailpipe, assist handle, hydroformed front section, light-tinted rear window, rear 60/40 folding bench, shows 106,355 miles. Notes: Financing is available for this vehicle. Item Location: Gretna, NE 68028 Equipment Sold "AS IS, WHERE IS": All equipment/property is sold "AS IS, WHERE IS" with no warranty or guarantees, expressed or implied, No operational assessments have been made by DPA Auctions on this item, it has been photographed ONLY.



## #212 - 1987 Kenworth T600A Truck (PZ1352, Unit 876)

1987 Kenworth T600A Truck (PZ1352, Unit 876). Cummins NTC-315 diesel engine, RT11609A transmission, air conditioning, heat, Am/Fm cassette radio, tandem axle, full screw, air ride suspension, 5th wheel plate, wet kit, 11R22.5 tires. Notes: Truck has been sitting for a year. Please call seller for operating condition. Item Location: Pocahontas, IA 50574 Equipment Sold "AS IS, WHERE IS": All equipment/property is sold "AS IS, WHERE IS" with no warranty or guarantees, expressed or implied, No operational assessments have been made by DPA Auctions on this item, it has been photographed ONLY.



## #213 - 1989 Mack Turbo Intercooler Boom Truck (PZ1351, Unit 526)

1989 Mack Turbo Intercooler Boom Truck (PZ1351, Unit 526), Diesel engine, 6 speed transmission, heat, single axle, 11R22.5 tires, Omaha Standard steel bed, Arm Lift model A38DC basket boom, S/N 2638-613, shows 172,930 miles. Notes: Truck did not pass DOT inspection. Item Location: Havelock, IA 50546 Equipment Sold "AS IS, WHERE IS": All equipment/property is sold "AS IS, WHERE IS" with no warranty or guarantees, expressed or implied, No operational assessments have been made by DPA Auctions on this item, it has been photographed ONLY.



## #214 - 1997 Terra Gator 1844 (TR7601)

1997 Terra Gator 1844 (TR7601), CAT Diesel engine, Automatic transmission, Dickey Jonh Controllers, Raven Monitor, Foam Markers/Tank, Stainless steelbooms, Air Max IV Box, Roll Tarp, 5752 hours. Notes: Item Location: Meeker, CO 81641 Equipment Sold "AS IS, WHERE IS": All equipment/property is sold "AS IS, WHERE IS" with no warranty or guarantees, expressed or implied, No operational assessments have been made by DPA Auctions on this item, it has been photographed ONLY.



## #215 - New Leader Dry Box (TR7600)

New Leader Dry Box (TR7600), New Leader L2020 G4 Box, roll tarp, hydraulic belt, Model 125675. Notes: Item Location: Meeker, CO 81641 Equipment Sold "AS IS, WHERE IS": All equipment/property is sold "AS IS, WHERE IS" with no warranty or guarantees, expressed or implied, No operational assessments have been made by DPA Auctions on this item, it has been photographed ONLY.



## #216 - Air Max IV Dry Box (TR7602)

Air Max IV Dry Box (TR7602), Air Max IV Spreader Box, hydraulic, stainless steel booms, roll tarp, stainless steel foam marker tank. Notes: New Blower, New Shroud in the Air Max Box 50 hours ago. Item Location: Meeker, CO 81641 Equipment Sold "AS IS, WHERE IS": All equipment/property is sold "AS IS, WHERE IS" with no warranty or guarantees, expressed or implied, No operational assessments have been made by DPA Auctions on this item, it has been photographed ONLY.



## #217 - IHC Grain Drill (TR7603)

IHC Grain Drill (TR7603), 3 point grain drill, Model, Always shedded, row markers, approx 20'. Notes: Item Location: Beresford, SD 57004 Equipment Sold "AS IS, WHERE IS": All equipment/property is sold "AS IS, WHERE IS" with no warranty or guarantees, expressed or implied, No operational assessments have been made by DPA Auctions on this item, it has been photographed ONLY.



## #218 - 1987 CEI Pacer Feed Trailer (TR4000)

1987 CEI Pacer Feed Trailer (TR4000), Combination bag/bulk feed trailer, tandem axle, hard top, overhead auger, tandem axle, air brakes, spring ride suspension, 4 compartments. Notes: Item Location: Jackson, MO 63755 Equipment Sold "AS IS, WHERE IS": All equipment/property is sold "AS IS, WHERE IS" with no warranty or guarantees, expressed or implied, No operational assessments have been made by DPA Auctions on this item, it has been photographed ONLY.



## #219 - 2011 AgChem Rogator 1396 Sprayer (ED881)

2011 AgChem Rogator 1396 Sprayer (ED881), C-13 CAT engine, 330 HP, 7 speed hydrostatic transmission, climate control cab, air ride seat, HID lighting package, Raven Viper Pro controller, Norac boom height Accuboom and Autoboom, AutoTrax autosteer, AM/FM radio, 1300 gallon stainless steel liquid system, tread width adjustable 120' boom, 15' breakaway section on each end, 20" nozzle spacing, 5 way nozzle body, 3" high capacity pump, 2and 3" flow meters, 3" SS flow meter for Nitrogen, chemical inductor, front and side fill ports, light bar on hood, Michelin 380 90R46 Spraybib tires 85-90%, no DEF required, shows 1002.4 hours. Notes: Float tires from this unit sold in separate lot. Item Location: Sanborn, IA 51248 Equipment Sold "AS IS, WHERE IS": All equipment/property is sold "AS IS, WHERE IS" with no warranty or guarantees, expressed or implied, No operational assessments have been made by DPA Auctions on this item, it has been photographed ONLY.



## #220 - MultApplier-5 Insert (ED874)

MultApplier-5 Insert (ED874), 5 foot long, like new insert, came out of a John Deere 4940 with a 3220 New Leader bed. Notes: Item Location: Shelbyville, IN 46176 Equipment Sold "AS IS, WHERE IS": All equipment/property is sold "AS IS, WHERE IS" with no warranty or guarantees, expressed or implied, No operational assessments have been made by DPA Auctions on this item, it has been photographed ONLY.



## #221 - Model SL-19 Lift (AL597)

Model SL-19 Lift (AL597), max load 650 lbs., base 30" x 66", height down 7', plate height 18', great condition, works perfectly. Notes: Item Location: Independence, IA 50644 Equipment Sold "AS IS, WHERE IS": All equipment/property is sold "AS IS, WHERE IS" with no warranty or guarantees, expressed or implied, No operational assessments have been made by DPA Auctions on this item, it has been photographed ONLY.



## #223 - Fuel Tank (AL598)

Fuel Tank (AL598), 30" x 23" x 19", approximate 50-55 gallons, model HP-100, Serial No. HP, PEI Great Plains Industries, Inc. Notes: Item Location: Independence, IA 50644 Equipment Sold "AS IS, WHERE IS": All equipment/property is sold "AS IS, WHERE IS" with no warranty or guarantees, expressed or implied, No operational assessments have been made by DPA Auctions on this item, it has been photographed ONLY.



## #224 - John Deere 4920 Liquid System (PD1237)

John Deere 4920 Liquid System (PD1237), 5 way nozzle bodies, new pump last year was used, fence row tip both ends, was winterized before stored. Notes: Item Location: Onarga, IL 60955 Equipment Sold "AS IS, WHERE IS": All equipment/property is sold "AS IS, WHERE IS" with no warranty or guarantees, expressed or implied, No operational assessments have been made by DPA Auctions on this item, it has been photographed ONLY.



### #225 - John Deere 7200 MaxEmerge Planter (DL474)

John Deere 7200 MaxEmerge Planter (DL474), John Deere MaxEmerge 8 row planter, has acres on it but lots of upgrades over its life, planted 2 years ago 1000 acres, fiber glass boxes with Distel Grain Systems box extensions, Sensor 1 monitor, Yetter fertilizer openers, Yetter row cleaners, spiked closing wheels on 1 side rubber on the other, drag chains on the back, 2 150 gallon fertilizer tanks and mounts, one mount is bent but can easily be straightened, previous owner kept fertilizer pump so it will need a pump, plumbed for in furrow fertilizer as well but system has not been used in about 5 years, Milo plates. Notes: Item Location: Gypsum, KS 67448 Equipment Sold "AS IS, WHERE IS": All equipment/property is sold "AS IS, WHERE IS" with no warranty or guarantees, expressed or implied, No operational assessments have been made by DPA Auctions on this item, it has been photographed ONLY.



### #226 - Slidell Automatic Bagger With Scale (AL593 )

Slidell Automatic Bagger With Scale (AL593 ), scale pre weights amount into the above hopper, grab and sets a bag, dumps weigh hopper into bag, releases bag, and repeats. Notes: This piece worked well in the past but has not been used recently. It is still in good operation condition. Seller able to load. Item Location: Breda, IA 51436 Equipment Sold "AS IS, WHERE IS": All equipment/property is sold "AS IS, WHERE IS" with no warranty or guarantees, expressed or implied, No operational assessments have been made by DPA Auctions on this item, it has been photographed ONLY.



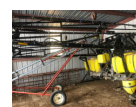
### #227 - 2010 John Deere 2310 Soil Finisher (AL596 )

2010 John Deere 2310 Soil Finisher (AL596 ), 33'x9", 3 bar coil tine harrow with rolling basket, 320/70R15 Tires. Notes: Item Location: Missouri Valley, IA 51555 Equipment Sold "AS IS, WHERE IS": All equipment/property is sold "AS IS, WHERE IS" with no warranty or guarantees, expressed or implied, No operational assessments have been made by DPA Auctions on this item, it has been photographed ONLY.



### #228 - Top Air TA-600 3 Point Sprayer (AL595)

Top Air TA-600 3 Point Sprayer (AL595), 90' boom, 600 gallon, eductor and rinse tank, always stored inside, raven harness no monitor. Notes: Item Location: Missouri Valley, IA 51555 Equipment Sold "AS IS, WHERE IS": All equipment/property is sold "AS IS, WHERE IS" with no warranty or guarantees, expressed or implied, No operational assessments have been made by DPA Auctions on this item, it has been photographed ONLY.



### #229 - 2008 John Deere 4930 Cab and Chassis (AL594)

2008 John Deere 4930 Cab and Chassis (AL594), John Deere diesel engine, hydrostatic transmission, am/FM CD radio, air conditioning and heat, 380/105R50 tires, shows 5818 hours. Notes: Unit is damaged as it collided with a tree. Please review pictures to see the damage. Item Location: Starbuck, MN 56381 Equipment Sold "AS IS, WHERE IS": All equipment/property is sold "AS IS, WHERE IS" with no warranty or guarantees, expressed or implied, No operational assessments have been made by DPA Auctions on this item, it has been photographed ONLY.



### #230 - 1998 CEI Pacer AT35L Tank Trailer (ED877)

1998 CEI Pacer AT35L Tank Trailer (ED877), 45' X 96" W, 9 compartment stainless steel bulk trailer, 30' discharge auger with remote control, tandem air ride axles, 22.5 tires, air controlled sliding lids, 3 line hydraulic with controls at rear or via remote. Notes: Item Location: Stratton, NE 69043 Equipment Sold "AS IS, WHERE IS": All equipment/property is sold "AS IS, WHERE IS" with no warranty or guarantees, expressed or implied, No operational assessments have been made by DPA Auctions on this item, it has been photographed ONLY.



### #231 - 1993 CEI Pacer Combination Trailer (ED878)

1993 CEI Pacer Combination Trailer (ED878), 42' combo bulk/bag, 3 bulk heads, 30' discharge auger, tandem spring ride, 22.5 tires, fold down slope plates and grate covers, 3 line hydraulic with road side controls. Notes: Item Location: Stratton, NE 69043 Equipment Sold "AS IS, WHERE IS": All equipment/property is sold "AS IS, WHERE IS" with no warranty or guarantees, expressed or implied, No operational assessments have been made by DPA Auctions on this item, it has been photographed ONLY.



### #232 - 1978 Doonan 36' Hopper Bottom (TH437)

1978 Doonan 36' Hopper Bottom (TH437), 36', new tarp. Notes: Item Location: Louisville, KY 40203 Equipment Sold "AS IS, WHERE IS": All equipment/property is sold "AS IS, WHERE IS" with no warranty or guarantees, expressed or implied, No operational assessments have been made by DPA Auctions on this item, it has been photographed ONLY.



### #233 - 2010 Ford F-150 4WD SuperCrew (AL619)

2010 Ford F-150 4WD SuperCrew (AL619), 8 cylinder engine, automatic transmission, am/FM radio, CD player, power windows, locks, mirrors, and seats, Goodyear Wrangler tires, heat/AC, keypad unlock/lock entry, bed liner, dual climate control, stability control, traction control, anti-lock brakes, dual airbags, side air bag system, airbag deactivation, red exterior and camel interior, four full sized doors, 155-amp alternator, 2-ton jack, driver and front passenger door scuff plates, easy fuel cap less fuel filler system, long-spindle double wishbone front suspension with coil-over-shock IFS, pretensioners, pwr rack and pinion steering, removable tailgate with key lock and lift assist, SOS post crash alert system, voltmeter, four pickup box tie-down hooks, 2nd row B-pillar grab handles, energy management retractors, leaf spring rear suspension with 2-stage variable rear springs, pwr front and rear disc brakes, SecuriLock anti-theft ignition, trailer sway control, shows 96,288 miles. Notes: Financing is available for this vehicle. Item Location: Gretna, NE 68028 Equipment Sold "AS IS, WHERE IS": All equipment/property is sold "AS IS, WHERE IS" with no warranty or guarantees, expressed or implied, No operational assessments have been made by DPA Auctions on this item, it has been photographed ONLY.



### #234 - Pro Force SS FL3430-12 Dry Spreader Box (ED882)

Pro Force SS FL3430-12 Dry Spreader Box (ED882), commercial grade dry box spreader, 105' spread width, Multapplier belt over chain insert for multiple product spreading, used for one season, running gear included. Notes: Running gear is included. Item Location: Sanborn, IA 51248 Equipment Sold "AS IS, WHERE IS": All equipment/property is sold "AS IS, WHERE IS" with no warranty or guarantees, expressed or implied, No operational assessments have been made by DPA Auctions on this item, it has been photographed ONLY.



### #236 - 2007 Freightliner Columbia Conventional Day Cab (ED876)

2007 Freightliner Columbia Conventional Day Cab (ED876), 14.0 Detroit diesel engine, 10 speed transmission, 11R22.5 tires, front tires are new, rear tires are 75%, AM/FM, heat, A/C, perfect daycab truck, bought as a backup and was only used in the fall, shows 476,765 miles. Notes: Item Location: Taylor Ridge, IL 61284 Equipment Sold "AS IS, WHERE IS": All equipment/property is sold "AS IS, WHERE IS" with no warranty or guarantees, expressed or implied, No operational assessments have been made by DPA Auctions on this item, it has been photographed ONLY.



### #239 - 1995 Terra Gator 1844 (DL476)

1995 Terra Gator 1844 (DL476), 1995 Terra Gator 1844, Cummins motor, automatic transmission, 11 foot L3020GT stainless steel bed, hydraulic drive, Mark 4 controller, belt over chain and bearings new in 2015, new A/C in 2018, all books and manuals, shows 7,087 hours. Notes: Item Location: Vincennes, IN 47591 Equipment Sold "AS IS, WHERE IS": All equipment/property is sold "AS IS, WHERE IS" with no warranty or guarantees, expressed or implied, No operational assessments have been made by DPA Auctions on this item, it has been photographed ONLY.



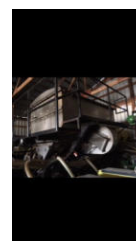
### #240 - 2004 Newton Crouch Row Crop Spreader (DL477)

2004 Newton Crouch Row Crop Spreader (DL477), 2004 Newton Crouch high clearance row crop spreader, 9 foot all stainless steel bed, ground drive with hydraulic spinners, excellent condition, purchased new and always stored inside. Notes: Item Location: Vincennes, IN 47591 Equipment Sold "AS IS, WHERE IS": All equipment/property is sold "AS IS, WHERE IS" with no warranty or guarantees, expressed or implied, No operational assessments have been made by DPA Auctions on this item, it has been photographed ONLY.



### #241 - 2012 Stainless Steel Montag 4 Ton Air Delivery Dry Starter Fertilizer System (AL599)

2012 Stainless Steel Montag 4 Ton Air Delivery Dry Starter Fertilizer System (AL599), hydraulic driven fan which can push up to 350lbs of fertilizer per acre, roll tarp, scale, and can be controlled with the raven monitor or John Deere rate controller, currently set up on a John Deere 1770 16 row, but can be fabricated to run on lower row planters. Notes: This piece has worked great every year, seller is just getting away from dry starter. Item Location: Arcadia, WI 54612 Equipment Sold "AS IS, WHERE IS": All equipment/property is sold "AS IS, WHERE IS" with no warranty or guarantees, expressed or implied, No operational assessments have been made by DPA Auctions on this item, it has been photographed ONLY.



### #242 - AgChem Breakaway Boom Section (ED884)

AgChem Breakaway Boom Section (ED884), AgChem 15 foot of breakaway boom section for 120' boom, still in crate, never been used. Notes: Item Location: Sanborn, IA 51248 Equipment Sold "AS IS, WHERE IS": All equipment/property is sold "AS IS, WHERE IS" with no warranty or guarantees, expressed or implied, No operational assessments have been made by DPA Auctions on this item, it has been photographed ONLY.



### #243 - John Deere 7000 Planter (DL478)

John Deere 7000 Planter (DL478), John Deere 4 row 7000 corn planter, mint shape, had the following done by a certified John Deere shop - new disks, scrapers, rock guards, & drive chains, also replaced other chains and plastic tensioners along with a couple down force springs, installed 4 brand new Yetter trash whippers. Notes: Planter has not been used since all work has been done. Seller has paperwork to show work and repair. Item Location: Roscoe, SD 57471 Equipment Sold "AS IS, WHERE IS": All equipment/property is sold "AS IS, WHERE IS" with no warranty or guarantees, expressed or implied, No operational assessments have been made by DPA Auctions on this item, it has been photographed ONLY.



### #244 - 2017 Ford Focus SE Sedan (AL628)

2017 Ford Focus SE Sedan (AL628), 4 cylinder engine, dual shift gearbox transmission, am/FM radio, CD player, digital display, power windows, locks, and mirrors, heat/ac, cruise control, backup camera, braking assist, hill start assist, stability control, traction control, anti-lock brakes, dual airbags, side air bag system, 12.4 gallon fuel tank, 60-40 folding bench front facing forward seatback, 911 assist emergency SOS, electric power-assist steering, trunk/hatch/tailgate FOB controls, light tinted glass, single stainless steel exhaust, steel spare wheel, 1 LCD monitor in the front, black grille with chrome accents, engine auto stop-start feature, front-wheel drive, Securilock anti-theft ignition, shows 52,685 miles. Notes: Financing is available for this vehicle. Item Location: Gretna, NE 68028 Equipment Sold "AS IS, WHERE IS": All equipment/property is sold "AS IS, WHERE IS" with no warranty or guarantees, expressed or implied, No operational assessments have been made by DPA Auctions on this item, it has been photographed ONLY.



### #245 - Kubota L3000 Tractor (DL475)

Kubota L3000 Tractor (DL475), Kubota L3000 tractor with front end loader in good working order, approx. 800 hours, new seals on both bucket tilt cylinders, minor damage to front sheet metal, seat has tears. Notes: Item Location: Saint Charles, MO 63301 Equipment Sold "AS IS, WHERE IS": All equipment/property is sold "AS IS, WHERE IS" with no warranty or guarantees, expressed or implied, No operational assessments have been made by DPA Auctions on this item, it has been photographed ONLY.



### #246 - 2017 Timppe Super Tender Trailer (KMK779)

2017 Timppe Super Tender Trailer (KMK779), 2017 Timppe super tender trailer, 40' long with 72" sidewalls, over all height 10' 10", tandem axle, air ride suspension, electric tarp with remote, hydraulic driven conveyor system, all stainless removable conveyor system (30 minute job to convert to grain trailer), Shurco electric traps with remote, hopper sight glasses for each hopper, brackets for removable vibrator on each hopper, upgraded micro clear LED lens 2 rows with 5 lights each, 8 aluminum wheels, 4 of the 8 are Durabright wheels. Notes: No blemishes in any of the side or front panels from fertilizer. Rust free washed after used around fertilizer. Item Location: Nebraska City, NE 68410 Equipment Sold "AS IS, WHERE IS": All equipment/property is sold "AS IS, WHERE IS" with no warranty or guarantees, expressed or implied, No operational assessments have been made by DPA Auctions on this item, it has been photographed ONLY.



### #247 - 2016 Ford F150 Lariat Sport Crew Cab (PD1194)

2016 Ford F150 Lariat Sport Crew Cab (PD1194), 4X4, 2.7L Eco Boost engine, 1 owner salesman's pickup, heated and cooled leather seats, back sliding window, auto start, back up camera, navigation, extremely clean, 159,000 miles. Notes: Item Location: Sherburn, MN 56171 Equipment Sold "AS IS, WHERE IS": All equipment/property is sold "AS IS, WHERE IS" with no warranty or guarantees, expressed or implied, No operational assessments have been made by DPA Auctions on this item, it has been photographed ONLY.



### #248 - Brandt 1070 Auger (TR6143)

Brandt 1070 Auger (TR6143), 10" x 70', PTO, hydraulic lift, sweep auger. Notes: Item Location: Northville, SD 57465 Equipment Sold "AS IS, WHERE IS": All equipment/property is sold "AS IS, WHERE IS" with no warranty or guarantees, expressed or implied, No operational assessments have been made by DPA Auctions on this item, it has been photographed ONLY.



### #249 - 1998 Ford Dry Truck (TR7605)

1998 Ford Dry Truck (TR7605), CAT Diesel engine, 7 speed transmission, Air Brakes, single axle, 220,000 miles, 10 ton Dry Tender box, rear discharge, hydraulic. Notes: Missing 6th Gear Item Location: Jackson, MO 63755 Equipment Sold "AS IS, WHERE IS": All equipment/property is sold "AS IS, WHERE IS" with no warranty or guarantees, expressed or implied, No operational assessments have been made by DPA Auctions on this item, it has been photographed ONLY.



### #250 - 1995 Agcostar 8425 A (DL468)

1995 Agcostar 8425 A (DL468), 4 x 4 tractor, Cummins N14 turbocharged diesel, 6 cylinder, Eaton Fuller transmission, 18 speed, heat & a/c - cold air, am/fm radio w/ CD player, excellent tires and paint, Notes: This tractor has 0 hours on a complete rebuilt 425hp Cummins motor, including new turbo, new rebuilt radiator, new starter, reworked heads, new water pump, new oil pump, & new clutch with less than 200 hours. Seller can provide receipts for all work done. Item Location: Burnside, IL 62330 Equipment Sold "AS IS, WHERE IS": All equipment/property is sold "AS IS, WHERE IS" with no warranty or guarantees, expressed or implied, No operational assessments have been made by DPA Auctions on this item, it has been photographed ONLY.



### #251 - 1979 GMC 7000 Grain Truck (KMK775)

1979 GMC 7000 Grain Truck (KMK775), Sierra, 366 gas engine, automatic transmission, heat, am/fm/cassette radio, single axle, air brakes, Parker 425 bushel box, double doors, roll tarp, rear ag hitch, 9.00-20 tires. Notes: Item Location: Panama, IA 51562 Equipment Sold "AS IS, WHERE IS": All equipment/property is sold "AS IS, WHERE IS" with no warranty or guarantees, expressed or implied, No operational assessments have been made by DPA Auctions on this item, it has been photographed ONLY.



### #252 - Jo Dog Axle (AL601)

Jo Dog Axle (AL601), lights work good along with brakes and air lines, tires are decent, 5th wheel latches and releases good, very solid, no title. Notes: Item Location: Sioux City, IA 51101 Equipment Sold "AS IS, WHERE IS": All equipment/property is sold "AS IS, WHERE IS" with no warranty or guarantees, expressed or implied, No operational assessments have been made by DPA Auctions on this item, it has been photographed ONLY.



### #253 - (4) Michelin Spray Bib Flotation Tires (ED883)

(4) Michelin Spray Bib Flotation Tires (ED883), 4 Mega X Bib float tires size 620 70R38 at 90-95%. Notes: Item Location: Sanborn, IA 51248 Equipment Sold "AS IS, WHERE IS": All equipment/property is sold "AS IS, WHERE IS" with no warranty or guarantees, expressed or implied, No operational assessments have been made by DPA Auctions on this item, it has been photographed ONLY.



### #254 - 1999 Terra Gator 8103 Liquid Floater (ED880)

1999 Terra Gator 8103 Liquid Floater (ED880), John Deere diesel engine, Terra Shift transmission, A/C, heat, AM/FM cassette radio, 1800 gallon stainless steel liquid system, Benson 85/55 retractable boom, foam marker, stainless steel foam marker tank, top poly rinse tank, Firestone 66X43.00-25 front tires, Michelin Mega Bib 1000/50R25 rear tires, Falcon controller, Trimble GPS light bar, shows 5859 hours. Notes: Item Location: Atlanta, IL 61723 Equipment Sold "AS IS, WHERE IS": All equipment/property is sold "AS IS, WHERE IS" with no warranty or guarantees, expressed or implied, No operational assessments have been made by DPA Auctions on this item, it has been photographed ONLY.



### #256 - 2007 Rogator 1074SS Sprayer (DL470)

2007 Rogator 1074SS Sprayer (DL470), Cat 3126B 7.2L 275hp engine, air ride cab, deluxe seat, AM/FM CD satellite radio, 1000 gallon stainless steel tank, top fresh water tank, 5 section 90 foot booms, foam marker, Trimble FM 750 with Field IQ controller, annual PMI's done through Ziegler dealer, shows 4921 hours. Notes: Item Location: Plainview, MN 55964 Equipment Sold "AS IS, WHERE IS": All equipment/property is sold "AS IS, WHERE IS" with no warranty or guarantees, expressed or implied, No operational assessments have been made by DPA Auctions on this item, it has been photographed ONLY.



### #257 - Caterpillar 963B Crawler Loader (PD1239)

Caterpillar 963B Crawler Loader (PD1239), 200 hours on new under carriage, new teeth on bucket and cutting edges, heat works, a/c does not, 8,400 hours, good machine, just don't use enough anymore. Notes: Item Location: Perryville, MO 63775 Equipment Sold "AS IS, WHERE IS": All equipment/property is sold "AS IS, WHERE IS" with no warranty or guarantees, expressed or implied, No operational assessments have been made by DPA Auctions on this item, it has been photographed ONLY.



### #258 - 1977 Koering Wheel Trencher (ED875)

1977 Koering Wheel Trencher (ED875), Detroit diesel engine, cuts 24" trench, lays up to 12" tile, comes with Intellislope Gradient software, comes with Outback A320 Rtk base station and radio, comes with four wheeler/side by side harness for topo mapping, great machine for farmer or someone starting out, field ready. Notes: Item Location: Mc Lean, IL 61754 Equipment Sold "AS IS, WHERE IS": All equipment/property is sold "AS IS, WHERE IS" with no warranty or guarantees, expressed or implied, No operational assessments have been made by DPA Auctions on this item, it has been photographed ONLY.



### #259 - 2011 Ford F350 Lariat (AL600)

2011 Ford F350 Lariat (AL600), power stroke diesel engine, 6 speed automatic transmission, am/FM radio, CD, power windows and lock, LT275/70R10 tires, overdrive, differential locks, 4x4, power steering, cruise control, crew cab, heat/AC, leather, loaded, fuel tank, toolbox, and gooseneck hitch, shows 186,000 miles. Notes: 2-way radio and inverter will be REMOVED. Item Location: Starbuck, MN 56381 Equipment Sold "AS IS, WHERE IS": All equipment/property is sold "AS IS, WHERE IS" with no warranty or guarantees, expressed or implied, No operational assessments have been made by DPA Auctions on this item, it has been photographed ONLY.



### #260 - New Good Year Tires (PZ1316)

New Good Year Tires (PZ1316), 2 - New Good Year Dyna Torque 380/85R46 radial tires, 146D load rating. Notes: Never been used. Item Location: Wellman, IA 52356 Equipment Sold "AS IS, WHERE IS": All equipment/property is sold "AS IS, WHERE IS" with no warranty or guarantees, expressed or implied, No operational assessments have been made by DPA Auctions on this item, it has been photographed ONLY.



### #261 - Titan Tires (PZ1317)

Titan Tires (PZ1317), 3 - Titan 14.9R46 R-1 radial tires, approx. 10-15% tread. Notes: Item Location: Wellman, IA 52356 Equipment Sold "AS IS, WHERE IS": All equipment/property is sold "AS IS, WHERE IS" with no warranty or guarantees, expressed or implied, No operational assessments have been made by DPA Auctions on this item, it has been photographed ONLY.



### #262 - New Titan Tires (PZ1318)

New Titan Tires (PZ1318), 2 - New Titan 12.4-42 Hi Traction Lug tires, 10 ply rating. Notes: Never been used. Item Location: Wellman, IA 52356 Equipment Sold "AS IS, WHERE IS": All equipment/property is sold "AS IS, WHERE IS" with no warranty or guarantees, expressed or implied, No operational assessments have been made by DPA Auctions on this item, it has been photographed ONLY.



### #263 - New Michelin Tires (PZ1319)

New Michelin Tires (PZ1319), 2 - New Michelin AgriBib 380/90R46 tires, 157B load rating. Notes: Never been used. Item Location: Wellman, IA 52356 Equipment Sold "AS IS, WHERE IS": All equipment/property is sold "AS IS, WHERE IS" with no warranty or guarantees, expressed or implied, No operational assessments have been made by DPA Auctions on this item, it has been photographed ONLY.



### #264 - New Michelin Tires (PZ1320)

New Michelin Tires (PZ1320), 2 - New Michelin AgriBib 380/90R46 tires, 157B load rating. Notes: Never been used. Item Location: Wellman, IA 52356 Equipment Sold "AS IS, WHERE IS": All equipment/property is sold "AS IS, WHERE IS" with no warranty or guarantees, expressed or implied, No operational assessments have been made by DPA Auctions on this item, it has been photographed ONLY.



### #265 - Good Year Tires (PZ1325)

Good Year Tires (PZ1325), 3 - Good Year 380/90R46 Ultra Sprayer tires, 168B load rating. Notes: Item Location: Wellman, IA 52356 Equipment Sold "AS IS, WHERE IS": All equipment/property is sold "AS IS, WHERE IS" with no warranty or guarantees, expressed or implied, No operational assessments have been made by DPA Auctions on this item, it has been photographed ONLY.



### #266 - 2009 Ford F-250 SD 4WD Crew Cab Harley Davidson (AL622)

2009 Ford F-250 SD 4WD Crew Cab Harley Davidson (AL622), 8 cylinder engine, automatic transmission, am/FM radio, digital display, power windows, locks, and mirrors, heat/ac, heated seats, leather interior, sun roof, keypad unlock/lock, bed liner, bed cover, backup sensor, parking assistance, dual climate control, anti-lock brakes, black exterior and ebony interior, 2-ton mechanical jack, 7/4 pin combination connector, SecuriLock anti-theft ignition, 12.5K Built Ford Tough trailer hitch recoverin 2" hitch, auxiliary pwr point, front fender vents, front stabilizer bar, instrument panel mounted storage bin and trash bag hook, power steering with steering damper, stationary elevated engine idle control, trailer tow package 7 wire harness with relays, shows 39,960 miles. Notes: Financing is available for this vehicle. Item Location: Gretna, NE 68028 Equipment Sold "AS IS, WHERE IS": All equipment/property is sold "AS IS, WHERE IS" with no warranty or guarantees, expressed or implied, No operational assessments have been made by DPA Auctions on this item, it has been photographed ONLY.



---

### #267 - Center Ride Cab (PZ1313)

Center Ride Cab (PZ1313), Center Ride cab, came off a 1998 Silver Wheels. Notes: Item Location: Wellman, IA 52356 Equipment Sold "AS IS, WHERE IS": All equipment/property is sold "AS IS, WHERE IS" with no warranty or guarantees, expressed or implied, No operational assessments have been made by DPA Auctions on this item, it has been photographed ONLY.



---

### #268 - 2001 Jakel Feed Mixer (PZ1305)

2001 Jakel Feed Mixer (PZ1305), Jakel 6 ton feed mixer, S/N 218, GSE 350 digital scale. Notes: Item Location: Lena, IL 61048 Equipment Sold "AS IS, WHERE IS": All equipment/property is sold "AS IS, WHERE IS" with no warranty or guarantees, expressed or implied, No operational assessments have been made by DPA Auctions on this item, it has been photographed ONLY.



---

### #269 - Feed Bin Cluster (PZ1307)

Feed Bin Cluster (PZ1307), 4 Compartment steel bin cluster, steel structure, GSE 550 digital scale. Notes: Item Location: Lena, IL 61048 Equipment Sold "AS IS, WHERE IS": All equipment/property is sold "AS IS, WHERE IS" with no warranty or guarantees, expressed or implied, No operational assessments have been made by DPA Auctions on this item, it has been photographed ONLY.



---

### #270 - Feed Bin Cluster (PZ1308)

Feed Bin Cluster (PZ1308), 2 Compartment steel bin cluster, steel structure, electric auger. Notes: Item Location: Lena, IL 61048 Equipment Sold "AS IS, WHERE IS": All equipment/property is sold "AS IS, WHERE IS" with no warranty or guarantees, expressed or implied, No operational assessments have been made by DPA Auctions on this item, it has been photographed ONLY.



---

### #271 - Grain Leg (PZ1303)

Grain Leg (PZ1303), Approx. 30' grain leg & cups. Notes: Item Location: Lena, IL 61048 Equipment Sold "AS IS, WHERE IS": All equipment/property is sold "AS IS, WHERE IS" with no warranty or guarantees, expressed or implied, No operational assessments have been made by DPA Auctions on this item, it has been photographed ONLY.



---

### #272 - Grain Leg (PZ1304)

Grain Leg (PZ1304), Approx. 60' grain leg & cups, 8 hole distributor, down spouts. Notes: Item Location: Lena, IL 61048 Equipment Sold "AS IS, WHERE IS": All equipment/property is sold "AS IS, WHERE IS" with no warranty or guarantees, expressed or implied, No operational assessments have been made by DPA Auctions on this item, it has been photographed ONLY.



---

### #273 - U Trough (PZ1306)

U Trough (PZ1306), Approx. 30'-35' U trough, distributor, down spout, catwalk. Notes: Item Location: Lena, IL 61048 Equipment Sold "AS IS, WHERE IS": All equipment/property is sold "AS IS, WHERE IS" with no warranty or guarantees, expressed or implied, No operational assessments have been made by DPA Auctions on this item, it has been photographed ONLY.



---

### #274 - 9 DMI Spring Shanks (TH435)

9 DMI Spring Shanks (TH435), lot of 9 DMI spring shanks. Notes: Item Location: Sterling, IL 61081 Equipment Sold "AS IS, WHERE IS": All equipment/property is sold "AS IS, WHERE IS" with no warranty or guarantees, expressed or implied, No operational assessments have been made by DPA Auctions on this item, it has been photographed ONLY.



### #275 - 9 DMI 20" Spring Coulters (TH430)

9 DMI 20" Spring Coulters (TH430), lot of 9 DMI spring coulters. Notes: Item Location: Sterling, IL 61081 Equipment Sold "AS IS, WHERE IS": All equipment/property is sold "AS IS, WHERE IS" with no warranty or guarantees, expressed or implied, No operational assessments have been made by DPA Auctions on this item, it has been photographed ONLY.



### #276 - 9 DMI Spring Shanks (TH432)

9 DMI Spring Shanks (TH432), lot of 9 DMI spring shanks. Notes: Item Location: Sterling, IL 61081 Equipment Sold "AS IS, WHERE IS": All equipment/property is sold "AS IS, WHERE IS" with no warranty or guarantees, expressed or implied, No operational assessments have been made by DPA Auctions on this item, it has been photographed ONLY.



### #277 - 2013 Mercedes-Benz C-Class 4dr Sdn C 300 Sport (AL617)

2013 Mercedes-Benz C-Class 4dr Sdn C 300 Sport (AL617), V6 cylinder engine, automatic transmission, am/FM radio, CD player, power windows and locks, P225/45R17 front tires, P245/40R17 rear all season performance tires, heat/ac, sun roof, heated seats, off white exterior and almond/beige interior, HomeLink garage door opener, power heated signal mirrors, anti-theft alarm system, Bluetooth hands-free communication system, dual exhaust with chrome tips, leather wrapped sport steering wheel with multi-function controls, shows 71,710 miles. Notes: Financing is available for this vehicle. Item Location: Gretna, NE 68028 Equipment Sold "AS IS, WHERE IS": All equipment/property is sold "AS IS, WHERE IS" with no warranty or guarantees, expressed or implied, No operational assessments have been made by DPA Auctions on this item, it has been photographed ONLY.



### #278 - 9 DMI Spring Shanks (TH433)

9 DMI Spring Shanks (TH433), lot of 9 DMI spring shanks. Notes: Item Location: Sterling, IL 61081 Equipment Sold "AS IS, WHERE IS": All equipment/property is sold "AS IS, WHERE IS" with no warranty or guarantees, expressed or implied, No operational assessments have been made by DPA Auctions on this item, it has been photographed ONLY.



### #279 - 7 Yetter 20" Spring Coulters (TH434)

7 Yetter 20" Spring Coulters (TH434), lot of 7 Yetter 20" spring coulters. Notes: Item Location: Sterling, IL 61081 Equipment Sold "AS IS, WHERE IS": All equipment/property is sold "AS IS, WHERE IS" with no warranty or guarantees, expressed or implied, No operational assessments have been made by DPA Auctions on this item, it has been photographed ONLY.



### #280 - 5 Freestanding Panels (ME421)

5 Freestanding Panels (ME421), TH Custom Manufacturing Freestanding Panels, full frame design built from 2-7/8" pipe, 24ft long by 5'9" tall, 7/8 rod ran through the uprights to prevent sharp edges, bent legs to prevent panel from sliding and to allow sturdy placement, saddle cuts on all uprights, drain holes on all uprights to prevent rusting from within the pipe, double chains standard on all panels. Notes: Shipping available anywhere in the U.S for additional charge. Item Location: Canistota, SD 57012 Equipment Sold "AS IS, WHERE IS": All equipment/property is sold "AS IS, WHERE IS" with no warranty or guarantees, expressed or implied, No operational assessments have been made by DPA Auctions on this item, it has been photographed ONLY.



### #281 - 5 Freestanding Panels (ME422)

5 Freestanding Panels (ME422), TH Custom Manufacturing Freestanding Panels, full frame design built from 2-7/8" pipe, 24ft long by 5'9" tall, 7/8 rod ran through the uprights to prevent sharp edges, bent legs to prevent panel from sliding and to allow sturdy placement, saddle cuts on all uprights, drain holes on all uprights to prevent rusting from within the pipe, double chains standard on all panels. Notes: Shipping available anywhere in the U.S for additional charge. Item Location: Canistota, SD 57012 Equipment Sold "AS IS, WHERE IS": All equipment/property is sold "AS IS, WHERE IS" with no warranty or guarantees, expressed or implied, No operational assessments have been made by DPA Auctions on this item, it has been photographed ONLY.



## #282 - 5 Freestanding Panels (ME423)

5 Freestanding Panels (ME423), TH Custom Manufacturing Freestanding Panels, full frame design built from 2-7/8" pipe, 24ft long by 5'9" tall, 7/8 rod ran through the uprights to prevent sharp edges, bent legs to prevent panel from sliding and to allow sturdy placement, saddle cuts on all uprights, drain holes on all uprights to prevent rusting from within the pipe, double chains standard on all panels. Notes: Shipping available anywhere in the U.S for additional charge. Item Location: Canistota, SD 57012 Equipment Sold "AS IS, WHERE IS": All equipment/property is sold "AS IS, WHERE IS" with no warranty or guarantees, expressed or implied, No operational assessments have been made by DPA Auctions on this item, it has been photographed ONLY.



## #283 - Quickstak Palletizer Machine Model 25325 01 (PD1178)

Quickstak Palletizer Machine Model 25325 01 (PD1178), incorporates an air floatation table so that a 110 pound bag can be handles with little effort, single operator can palletize bags at 20 per minute rate depending on the size and number of bags per row, manual adjustment guides around the flotation table ensure a square pattern for virtually any size. Notes: Item Location: Kalona, IA 52247 Equipment Sold "AS IS, WHERE IS": All equipment/property is sold "AS IS, WHERE IS" with no warranty or guarantees, expressed or implied, No operational assessments have been made by DPA Auctions on this item, it has been photographed ONLY.



## #284 - Corn Row Flamer (JJ110)

Corn Row Flamer (JJ110), Flamer with 150 Gallon LP Tank, 38' Boom, Hydraulic/ Manual Fold, 9.5 L x 15 Tires. Notes: Item Location: Winchester, IN 47394 Equipment Sold "AS IS, WHERE IS": All equipment/property is sold "AS IS, WHERE IS" with no warranty or guarantees, expressed or implied, No operational assessments have been made by DPA Auctions on this item, it has been photographed ONLY.



## #285 - Corn Row Flamer (JJ111)

Corn Row Flamer (JJ111), Corn Row Flamer, 150 Gallon LP Tank, 38' Boom, Hydraulic/ Manual Fold, 9.5 L-15 Tires. Notes: Item Location: Winchester, IN 47394 Equipment Sold "AS IS, WHERE IS": All equipment/property is sold "AS IS, WHERE IS" with no warranty or guarantees, expressed or implied, No operational assessments have been made by DPA Auctions on this item, it has been photographed ONLY.



## #286 - Corn Row Flamer (JJ112)

Corn Row Flamer (JJ112), Corn Row Flamer, 150 Gallon LP Tank, 38' Boom, Hydraulic/ Manual Fold, 9.5L-15 Tires. Notes: Item Location: Winchester, IN 47394 Equipment Sold "AS IS, WHERE IS": All equipment/property is sold "AS IS, WHERE IS" with no warranty or guarantees, expressed or implied, No operational assessments have been made by DPA Auctions on this item, it has been photographed ONLY.



## #287 - Metal Siding/Roofing (DR1382)

Metal Siding/Roofing (DR1382), 2nd's material some paint crack (30) sheets, American made, Hunter Green color, 16' long X 36" overlap coverage, Premium Pro Rib Profile style, 29 gauge. ALWAYS stored inside. Meets all USA building material engineering codes for Tested Tolerances for wind & snow. USA stamped seal of approval documentation on all products. Notes: Loadout IS available with flexible appointments. Can also offer hardware, trim, corners at wholesale prices. Item Location: Monroe, NE 68647 Equipment Sold "AS IS, WHERE IS": All equipment/property is sold "AS IS, WHERE IS" with no warranty or guarantees, expressed or implied, No operational assessments have been made by DPA Auctions on this item, it has been photographed ONLY.



## #288 - 2015 Jeep Wrangler 4WD 4dr Sahara (AL610)

2015 Jeep Wrangler 4WD 4dr Sahara (AL610), V6 cylinder engine, automatic transmission, am/FM radio, digital display, power windows and locks, P255/70R18 OWL on/off road tires, heat/AC, convertible with fixed roll-over protection, front and rear antiroll bars, locking cargo area concealed storage, manual transfer case, towing equipment trailer sway control, 22.5 gallon fuel tank, aluminum spare wheel, auto locking hubs, brake assist and hill hold control, dashboard storage, full size spare tire mounted outside rear, heavy duty suspension with gas shocks, hydraulic power assist steering, removable rear window, trailing arm rear suspension with coil springs, shows 59,651 miles. Notes: Financing is available for this vehicle. Item Location: Gretna, NE 68028 Equipment Sold "AS IS, WHERE IS": All equipment/property is sold "AS IS, WHERE IS" with no warranty or guarantees, expressed or implied, No operational assessments have been made by DPA Auctions on this item, it has been photographed ONLY.



---

**#289 - Metal Siding/Roofing (DR1383)**

Metal Siding/Roofing (DR1383), 2nd's material some paint crack (30) sheets, American made, Hunter Green color, 16' long X 36" overlap coverage, Premium Pro Rib Profile style, 29 gauge. ALWAYS stored inside. Meets all USA building material engineering codes for Tested Tolerances for wind & snow. USA stamped seal of approval documentation on all products. Notes: Loadout IS available with flexible appointments. Can also offer hardware, trim, corners at wholesale prices. Item Location: Monroe, NE 68647 Equipment Sold "AS IS, WHERE IS": All equipment/property is sold "AS IS, WHERE IS" with no warranty or guarantees, expressed or implied, No operational assessments have been made by DPA Auctions on this item, it has been photographed ONLY.



---

**#290 - Metal Siding/Roofing (DR1384)**

Metal Siding/Roofing (DR1384), 2nd's material some paint crack (30) sheets, American made, Hunter Green color, 16' long X 36" overlap coverage, Premium Pro Rib Profile style, 29 gauge. ALWAYS stored inside. Meets all USA building material engineering codes for Tested Tolerances for wind & snow. USA stamped seal of approval documentation on all products. Notes: Loadout IS available with flexible appointments. Can also offer hardware, trim, corners at wholesale prices. Item Location: Monroe, NE 68647 Equipment Sold "AS IS, WHERE IS": All equipment/property is sold "AS IS, WHERE IS" with no warranty or guarantees, expressed or implied, No operational assessments have been made by DPA Auctions on this item, it has been photographed ONLY.



---

**#291 - Metal Siding/Roofing (DR1385)**

Metal Siding/Roofing (DR1385), 2nd's material some paint crack (30) sheets, American made, Hunter Green color, 16' long X 36" overlap coverage, Premium Pro Rib Profile style, 29 gauge. ALWAYS stored inside. Meets all USA building material engineering codes for Tested Tolerances for wind & snow. USA stamped seal of approval documentation on all products. Notes: Loadout IS available with flexible appointments. Can also offer hardware, trim, corners at wholesale prices. Item Location: Monroe, NE 68647 Equipment Sold "AS IS, WHERE IS": All equipment/property is sold "AS IS, WHERE IS" with no warranty or guarantees, expressed or implied, No operational assessments have been made by DPA Auctions on this item, it has been photographed ONLY.



---

**#292 - Metal Siding/Roofing (DR1386)**

Metal Siding/Roofing (DR1386), 2nd's material some paint crack (30) sheets, American made, Hunter Green color, 16' long X 36" overlap coverage, Premium Pro Rib Profile style, 29 gauge. ALWAYS stored inside. Meets all USA building material engineering codes for Tested Tolerances for wind & snow. USA stamped seal of approval documentation on all products. Notes: Loadout IS available with flexible appointments. Can also offer hardware, trim, corners at wholesale prices. Item Location: Monroe, NE 68647 Equipment Sold "AS IS, WHERE IS": All equipment/property is sold "AS IS, WHERE IS" with no warranty or guarantees, expressed or implied, No operational assessments have been made by DPA Auctions on this item, it has been photographed ONLY.



---

**#293 - Metal Siding/Roofing (DR1387)**

Metal Siding/Roofing (DR1387), 2nd's material some paint crack (30) sheets, American made, Hunter Green color, 16' long X 36" overlap coverage, Premium Pro Rib Profile style, 29 gauge. ALWAYS stored inside. Meets all USA building material engineering codes for Tested Tolerances for wind & snow. USA stamped seal of approval documentation on all products. Notes: Loadout IS available with flexible appointments. Can also offer hardware, trim, corners at wholesale prices. Item Location: Monroe, NE 68647 Equipment Sold "AS IS, WHERE IS": All equipment/property is sold "AS IS, WHERE IS" with no warranty or guarantees, expressed or implied, No operational assessments have been made by DPA Auctions on this item, it has been photographed ONLY.



---

**#294 - Metal Siding/Roofing (DR1388)**

Metal Siding/Roofing (DR1388), 2nd's material some paint crack (30) sheets, American made, Hunter Green color, 16' long X 36" overlap coverage, Premium Pro Rib Profile style, 29 gauge. ALWAYS stored inside. Meets all USA building material engineering codes for Tested Tolerances for wind & snow. USA stamped seal of approval documentation on all products. Notes: Loadout IS available with flexible appointments. Can also offer hardware, trim, corners at wholesale prices. Item Location: Monroe, NE 68647 Equipment Sold "AS IS, WHERE IS": All equipment/property is sold "AS IS, WHERE IS" with no warranty or guarantees, expressed or implied, No operational assessments have been made by DPA Auctions on this item, it has been photographed ONLY.



---

**#295 - Metal Siding/Roofing (DR1389)**

Metal Siding/Roofing (DR1389), 2nd's material some paint crack (30) sheets, American made, Hunter Green color, 16' long X 36" overlap coverage, Premium Pro Rib Profile style, 29 gauge. ALWAYS stored inside. Meets all USA building material engineering codes for Tested Tolerances for wind & snow. USA stamped seal of approval documentation on all products. Notes: Loadout IS available with flexible appointments. Can also offer hardware, trim, corners at wholesale prices. Item Location: Monroe, NE 68647 Equipment Sold "AS IS, WHERE IS": All equipment/property is sold "AS IS, WHERE IS" with no warranty or guarantees, expressed or implied, No operational assessments have been made by DPA Auctions on this item, it has been photographed ONLY.



---

**#296 - Metal Siding/Roofing (DR1390)**

Metal Siding/Roofing (DR1390), (40) sheets, American made, Rustic Red color, 16' long X 36" overlap coverage, Premium Pro Rib Profile style, 29 gauge. ALWAYS stored inside. Meets all USA building material engineering codes for Tested Tolerances for wind & snow. USA stamped seal of approval documentation on all products. Notes: Loadout IS available with flexible appointments. Can also offer hardware, trim, corners at wholesale prices. Item Location: Monroe, NE 68647 Equipment Sold "AS IS, WHERE IS": All equipment/property is sold "AS IS, WHERE IS" with no warranty or guarantees, expressed or implied, No operational assessments have been made by DPA Auctions on this item, it has been photographed ONLY.



---

**#297 - Metal Siding/Roofing (DR1391)**

Metal Siding/Roofing (DR1391), (30) sheets, American made, Rustic Red color, 16' long X 36" overlap coverage, Premium Pro Rib Profile style, 29 gauge. ALWAYS stored inside. Meets all USA building material engineering codes for Tested Tolerances for wind & snow. USA stamped seal of approval documentation on all products. Notes: Loadout IS available with flexible appointments. Can also offer hardware, trim, corners at wholesale prices. Item Location: Monroe, NE 68647 Equipment Sold "AS IS, WHERE IS": All equipment/property is sold "AS IS, WHERE IS" with no warranty or guarantees, expressed or implied, No operational assessments have been made by DPA Auctions on this item, it has been photographed ONLY.



---

**#298 - Bag Conveyor (PD1230)**

Bag Conveyor (PD1230), approx. 16 foot portable electric bag conveyor. Notes: Item Location: Washington, IA 52353 Equipment Sold "AS IS, WHERE IS": All equipment/property is sold "AS IS, WHERE IS" with no warranty or guarantees, expressed or implied, No operational assessments have been made by DPA Auctions on this item, it has been photographed ONLY.



---

**#300 - Lockable Steel Cabinet (PD1236)**

Lockable Steel Cabinet (PD1236), portable on wheels. Notes: Item Location: Washington, IA 52353 Equipment Sold "AS IS, WHERE IS": All equipment/property is sold "AS IS, WHERE IS" with no warranty or guarantees, expressed or implied, No operational assessments have been made by DPA Auctions on this item, it has been photographed ONLY.



---

**#301 - Kaeser Industrial Air Compressor (PD1233)**

Kaeser Industrial Air Compressor (PD1233), Sk26 model air compressor, 21,669 hours, AirTeck model SC220 air dryer, smart cycle, air dryer has parts missing. Notes: Item Location: Washington, IA 52353 Equipment Sold "AS IS, WHERE IS": All equipment/property is sold "AS IS, WHERE IS" with no warranty or guarantees, expressed or implied, No operational assessments have been made by DPA Auctions on this item, it has been photographed ONLY.



---

**#302 - Steel Portable Table (PD1234)**

Steel Portable Table (PD1234), wheels. Notes: Item Location: Washington, IA 52353 Equipment Sold "AS IS, WHERE IS": All equipment/property is sold "AS IS, WHERE IS" with no warranty or guarantees, expressed or implied, No operational assessments have been made by DPA Auctions on this item, it has been photographed ONLY.



---

**#303 - Steel Shelving (PD1235)**

Steel Shelving (PD1235), steel adjustable shelving, wheels. Notes: Item Location: Washington, IA 52353 Equipment Sold "AS IS, WHERE IS": All equipment/property is sold "AS IS, WHERE IS" with no warranty or guarantees, expressed or implied, No operational assessments have been made by DPA Auctions on this item, it has been photographed ONLY.



---

**#305 - Portable Fuel Transfer Station (KMK768)**

Portable Fuel Transfer Station (KMK768), fuel transfer station, casted cart, fuel transfer tank, Dayton Motor, hose and long electrical cord. Notes: Item Location: Panama, IA 51562 Equipment Sold "AS IS, WHERE IS": All equipment/property is sold "AS IS, WHERE IS" with no warranty or guarantees, expressed or implied, No operational assessments have been made by DPA Auctions on this item, it has been photographed ONLY.



---

**#306 - Emerson 1/3 HP. Electric Pump (KMK765)**

Emerson 1/3 HP. Electric Pump (KMK765), Emerson, model C55JXJFY-4450, 5 cfm, 2 stage, 1/3 hp., 1725 rpm., 110 V. / 60 Hz. Notes: Item Location: Panama, IA 51562 Equipment Sold "AS IS, WHERE IS": All equipment/property is sold "AS IS, WHERE IS" with no warranty or guarantees, expressed or implied, No operational assessments have been made by DPA Auctions on this item, it has been photographed ONLY.



**#307 - 10 Ton Hydraulic Jack (KMK763)**

10 Ton Hydraulic Jack (KMK763), 10 ton lift capacity, hydraulic, portable, floor jack. Notes: Item Location: Panama, IA 51562 Equipment Sold "AS IS, WHERE IS": All equipment/property is sold "AS IS, WHERE IS" with no warranty or guarantees, expressed or implied, No operational assessments have been made by DPA Auctions on this item, it has been photographed ONLY.

**#308 - Shop Equipment Lot (Light, Bench, Step) (KMK762)**

Shop Equipment Lot (Light, Bench, Step) (KMK762), Halogen dual light, adjustable lights and stand, portable bench, collapsible step. Notes: Item Location: Panama, IA 51562 Equipment Sold "AS IS, WHERE IS": All equipment/property is sold "AS IS, WHERE IS" with no warranty or guarantees, expressed or implied, No operational assessments have been made by DPA Auctions on this item, it has been photographed ONLY.

**#309 - 1000 Pound Geared Engine Stand (KMK764)**

1000 Pound Geared Engine Stand (KMK764), NAPA professional lifting equipment, model number: 791-5070, rotating geared engine stand. Notes: Item Location: Panama, IA 51562 Equipment Sold "AS IS, WHERE IS": All equipment/property is sold "AS IS, WHERE IS" with no warranty or guarantees, expressed or implied, No operational assessments have been made by DPA Auctions on this item, it has been photographed ONLY.

**#310 - 2009 Chevrolet Tahoe 4WD 4dr 1500 LTZ (AL621)**

2009 Chevrolet Tahoe 4WD 4dr 1500 LTZ (AL621), 8 cylinder engine, automatic transmission, am/FM radio, DVD player, power windows, locks, seats, and windows, P265/70R17 tires, heat/ac, sun roof, rear DVD player, 3rd row seating, backup sensor, rear air conditioning, remote start, parking assistance, dual climate control, traction control, audio system feature Bose CenterPoint surround sound 10-speaker system, anti-lock brakes, dual airbags, black exterior and light cashmere/dark cashmere interior, 160 amps, heavy-duty locking rear, leather-wrapped, PASS-Key III, theft-deterrent system, Bluetooth for phone personal cell phone connectivity to vehicle audio system and HMI with specific steering wheel controls, garage door opener, shows 98,222 miles. Notes: Financing is available for this vehicle. Item Location: Gretna, NE 68028 Equipment Sold "AS IS, WHERE IS": All equipment/property is sold "AS IS, WHERE IS" with no warranty or guarantees, expressed or implied, No operational assessments have been made by DPA Auctions on this item, it has been photographed ONLY.

**#311 - Portable Grease/ Lubricant Unit (KMK766)**

Portable Grease/ Lubricant Unit (KMK766), grease/ lubricant unit, portable, drum and band dolly, part # 855 15, max air pressure 150 psi, max fluid pressure 7500 psi. Notes: Item Location: Panama, IA 51562 Equipment Sold "AS IS, WHERE IS": All equipment/property is sold "AS IS, WHERE IS" with no warranty or guarantees, expressed or implied, No operational assessments have been made by DPA Auctions on this item, it has been photographed ONLY.

**#312 - Snap-on 18 Volt Hand Tools (KMK770)**

Snap-on 18 Volt Hand Tools (KMK770), Snap-on drill, impact wrench, grinder, 18 volt, five (5) lithium ion batteries, four (4) 14.4 - 21.6 volt chargers. Notes: Item Location: Panama, IA 51562 Equipment Sold "AS IS, WHERE IS": All equipment/property is sold "AS IS, WHERE IS" with no warranty or guarantees, expressed or implied, No operational assessments have been made by DPA Auctions on this item, it has been photographed ONLY.

**#313 - Clarke Metal Bender (KMK771)**

Clarke Metal Bender (KMK771), Clarke metal bender, bend up to 180 degrees, flat base for mounting, round dies are 25mm, 32mm, 38mm, 44mm, 51mm, 64mm, 76mm, and a right angle die. Notes: Item Location: Panama, IA 51562 Equipment Sold "AS IS, WHERE IS": All equipment/property is sold "AS IS, WHERE IS" with no warranty or guarantees, expressed or implied, No operational assessments have been made by DPA Auctions on this item, it has been photographed ONLY.

**#314 - 12.5 L John Deere Inj. Module (KMK759)**

12.5 L John Deere Inj. Module (KMK759), Agricultural Diesel Solutions, John Deere Inj. Module, 12.5 L, part number HP 9020. Notes: Item Location: Panama, IA 51562 Equipment Sold "AS IS, WHERE IS": All equipment/property is sold "AS IS, WHERE IS" with no warranty or guarantees, expressed or implied, No operational assessments have been made by DPA Auctions on this item, it has been photographed ONLY.

**#315 - 2004 Ford Headlights & Blinker Assembly (KMK760)**

2004 Ford Headlights & Blinker Assembly (KMK760), came off 2004 Ford, in good condition. Notes: Item Location: Panama, IA 51562 Equipment Sold "AS IS, WHERE IS": All equipment/property is sold "AS IS, WHERE IS" with no warranty or guarantees, expressed or implied, No operational assessments have been made by DPA Auctions on this item, it has been photographed ONLY.



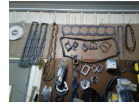
### #316 - Caterpillar Gaskets (KMK761)

Caterpillar Gaskets (KMK761), CAT gaskets and valve cover. Notes: Contact seller for detailed inventory. Item Location: Panama, IA 51562 Equipment Sold "AS IS, WHERE IS": All equipment/property is sold "AS IS, WHERE IS" with no warranty or guarantees, expressed or implied, No operational assessments have been made by DPA Auctions on this item, it has been photographed ONLY.



### #317 - John Deere Assorted Gaskets (KMK773)

John Deere Assorted Gaskets (KMK773), John Deere 466 gaskets. Notes: Please contact seller for more detailed inventory. Item Location: Panama, IA 51562 Equipment Sold "AS IS, WHERE IS": All equipment/property is sold "AS IS, WHERE IS" with no warranty or guarantees, expressed or implied, No operational assessments have been made by DPA Auctions on this item, it has been photographed ONLY.



### #318 - John Deere Assorted Bushings and Bearings (KMK772)

John Deere Assorted Bushings and Bearings (KMK772), John Deere, bushings, cam bearings, rear main bearings and more. Notes: Please contact seller for more detailed inventory. Item Location: Panama, IA 51562 Equipment Sold "AS IS, WHERE IS": All equipment/property is sold "AS IS, WHERE IS" with no warranty or guarantees, expressed or implied, No operational assessments have been made by DPA Auctions on this item, it has been photographed ONLY.



### #319 - Assorted John Deere Parts (KMK769)

Assorted John Deere Parts (KMK769), John Deere parts, voltage regulator, decals, cap and more. Notes: Please contact seller for more detailed inventory. Item Location: Panama, IA 51562 Equipment Sold "AS IS, WHERE IS": All equipment/property is sold "AS IS, WHERE IS" with no warranty or guarantees, expressed or implied, No operational assessments have been made by DPA Auctions on this item, it has been photographed ONLY.



### #320 - Cummins Gaskets (KMK774)

Cummins Gaskets (KMK774), Cummins gaskets, transmission gaskets. Notes: Please contact seller for more detailed inventory. Item Location: Panama, IA 51562 Equipment Sold "AS IS, WHERE IS": All equipment/property is sold "AS IS, WHERE IS" with no warranty or guarantees, expressed or implied, No operational assessments have been made by DPA Auctions on this item, it has been photographed ONLY.



### #321 - (4) Four Goodyear Wrangler Tires (LD111)

(4) Four Goodyear Wrangler Tires (LD111), size 265/65R18, at least 90% of tread life left. Notes: Item Location: Wentzville, MO 63385 Equipment Sold "AS IS, WHERE IS": All equipment/property is sold "AS IS, WHERE IS" with no warranty or guarantees, expressed or implied, No operational assessments have been made by DPA Auctions on this item, it has been photographed ONLY.



### #322 - Gustafson 60 Gallon Pump Stand (DL483)

Gustafson 60 Gallon Pump Stand (DL483), Gustafson 60 gallon pump stand with agitator and easy load pump with control. Notes: Item Location: Roscoe, SD 57471 Equipment Sold "AS IS, WHERE IS": All equipment/property is sold "AS IS, WHERE IS" with no warranty or guarantees, expressed or implied, No operational assessments have been made by DPA Auctions on this item, it has been photographed ONLY.



### #323 - 30 Gallon Pump Stand (DL481)

30 Gallon Pump Stand (DL481), 30 gallon pump stand with agitator. Notes: Item Location: Roscoe, SD 57471 Equipment Sold "AS IS, WHERE IS": All equipment/property is sold "AS IS, WHERE IS" with no warranty or guarantees, expressed or implied, No operational assessments have been made by DPA Auctions on this item, it has been photographed ONLY.



### #324 - 15 Gallon Pump Stand (DL480)

15 Gallon Pump Stand (DL480), 15 gallon pump stand in working condition. Notes: Item Location: Roscoe, SD 57471 Equipment Sold "AS IS, WHERE IS": All equipment/property is sold "AS IS, WHERE IS" with no warranty or guarantees, expressed or implied, No operational assessments have been made by DPA Auctions on this item, it has been photographed ONLY.



### #325 - 30 Gallon Pump Stand (DL482)

30 Gallon Pump Stand (DL482), 30 gallon pump stand with agitator. Notes: Item Location: Roscoe, SD 57471 Equipment Sold "AS IS, WHERE IS": All equipment/property is sold "AS IS, WHERE IS" with no warranty or guarantees, expressed or implied, No operational assessments have been made by DPA Auctions on this item, it has been photographed ONLY.



### #326 - 2006 CS1700 Gustafson Seed Treater w/ Hopper (DL484)

2006 CS1700 Gustafson Seed Treater w/ Hopper (DL484), 2006 CS1700 Gustafson downspout seed treater, like new, works great, comes with 100 bushel Freisen hopper bottom with open and close chain gate. Notes: Item Location: Roscoe, SD 57471 Equipment Sold "AS IS, WHERE IS": All equipment/property is sold "AS IS, WHERE IS" with no warranty or guarantees, expressed or implied, No operational assessments have been made by DPA Auctions on this item, it has been photographed ONLY.



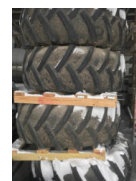
### #327 - Wintex 1000 Automatic Soil Sampler (DL479)

Wintex 1000 Automatic Soil Sampler (DL479), Wintex 1000 automatic soil sampler, was purchased brand new as a backup unit, never used, does not sell with power pack. Notes: Item Location: Roscoe, SD 57471 Equipment Sold "AS IS, WHERE IS": All equipment/property is sold "AS IS, WHERE IS" with no warranty or guarantees, expressed or implied, No operational assessments have been made by DPA Auctions on this item, it has been photographed ONLY.



### #328 - 23.1R30 Floater Tires With Rims (DL473)

23.1R30 Floater Tires With Rims (DL473), 23.1R30 floater tires with rims, came off of 1074SS Rogator, all 4 rims are good, one tire needs replaced. Notes: Item Location: Plainview, MN 55964 Equipment Sold "AS IS, WHERE IS": All equipment/property is sold "AS IS, WHERE IS" with no warranty or guarantees, expressed or implied, No operational assessments have been made by DPA Auctions on this item, it has been photographed ONLY.



### #329 - Precision Planting Bullseye Tubes (ED898)

Precision Planting Bullseye Tubes (ED898), precision planting bullseye tubes along with totally tubular in furrow starter delivery system. Notes: Item Location: Griggsville, IL 62340 Equipment Sold "AS IS, WHERE IS": All equipment/property is sold "AS IS, WHERE IS" with no warranty or guarantees, expressed or implied, No operational assessments have been made by DPA Auctions on this item, it has been photographed ONLY.



### #330 - (16) Planter Boxes with Precision ESET Meters (ED894)

(16) Planter Boxes with Precision ESET Meters (ED894), 16 planter boxes taken off John Deere 1770 NT planter with Precision Planting ESET meters installed, 16 boxes total all in great shape. Notes: Item Location: Griggsville, IL 62340 Equipment Sold "AS IS, WHERE IS": All equipment/property is sold "AS IS, WHERE IS" with no warranty or guarantees, expressed or implied, No operational assessments have been made by DPA Auctions on this item, it has been photographed ONLY.



### #331 - Ground Driven System (ED895)

Ground Driven System (ED895), ground driven system for a 1770 John Deere planter, unit has all the sprockets to change planting rates. Notes: Item Location: Griggsville, IL 62340 Equipment Sold "AS IS, WHERE IS": All equipment/property is sold "AS IS, WHERE IS" with no warranty or guarantees, expressed or implied, No operational assessments have been made by DPA Auctions on this item, it has been photographed ONLY.



### #332 - 16 Mount Brackets from JD 1770 Planter (ED896)

16 Mount Brackets from JD 1770 Planter (ED896), total of 16 brackets off of a John Deere 1770 planter, used to hold on the planter boxes and can also be used to mount insecticide boxes. Notes: Item Location: Griggsville, IL 62340 Equipment Sold "AS IS, WHERE IS": All equipment/property is sold "AS IS, WHERE IS" with no warranty or guarantees, expressed or implied, No operational assessments have been made by DPA Auctions on this item, it has been photographed ONLY.



---

### #333 - Pneumatic Air Bag System (ED897)

Pneumatic Air Bag System (ED897), pneumatic air bag system along with electrical air pump off a 1770 John Deere planter, 16 air bags and brackets in total. Notes: Item Location: Griggsville, IL 62340 Equipment Sold "AS IS, WHERE IS": All equipment/property is sold "AS IS, WHERE IS" with no warranty or guarantees, expressed or implied, No operational assessments have been made by DPA Auctions on this item, it has been photographed ONLY.



---

### #334 - Ground Driven Pump (ED893)

Ground Driven Pump (ED893), ground driven pump for starter fertilizer taken off a John Deere 1770NT planter, only used for 2 seasons. Notes: Item Location: Griggsville, IL 62340 Equipment Sold "AS IS, WHERE IS": All equipment/property is sold "AS IS, WHERE IS" with no warranty or guarantees, expressed or implied, No operational assessments have been made by DPA Auctions on this item, it has been photographed ONLY.



---

### #335 - Norwesco 1600 Gallon Tank (AL603)

Norwesco 1600 Gallon Tank (AL603), 1600 gallon tank. Notes: Item Location: Chillicothe, IL 61523 Equipment Sold "AS IS, WHERE IS": All equipment/property is sold "AS IS, WHERE IS" with no warranty or guarantees, expressed or implied, No operational assessments have been made by DPA Auctions on this item, it has been photographed ONLY.



---

### #336 - Snyder 1600 Gallon Tank (AL604)

Snyder 1600 Gallon Tank (AL604), 1600 gallon tank. Notes: Item Location: Chillicothe, IL 61523 Equipment Sold "AS IS, WHERE IS": All equipment/property is sold "AS IS, WHERE IS" with no warranty or guarantees, expressed or implied, No operational assessments have been made by DPA Auctions on this item, it has been photographed ONLY.



---

### #337 - Norwesco 1600 Gallon Tank (AL605)

Norwesco 1600 Gallon Tank (AL605), 1600 gallon tank. Notes: Item Location: Chillicothe, IL 61523 Equipment Sold "AS IS, WHERE IS": All equipment/property is sold "AS IS, WHERE IS" with no warranty or guarantees, expressed or implied, No operational assessments have been made by DPA Auctions on this item, it has been photographed ONLY.



---

### #338 - (16) Sixteen 2012 John Deere Single Disc Dry Fertilizer Openers (AL606)

(16) Sixteen 2012 John Deere Single Disc Dry Fertilizer Openers (AL606), sixteen 2012 John Deere dry fertilizer openers. Notes: Item Location: Arcadia, WI 54612 Equipment Sold "AS IS, WHERE IS": All equipment/property is sold "AS IS, WHERE IS" with no warranty or guarantees, expressed or implied, No operational assessments have been made by DPA Auctions on this item, it has been photographed ONLY.

