

Auction catalog

Title	Online Auction - February 5, 2019 10AM Central
Description	The following line of Fertilizer, Farm Implement, Truck, Trailer & Construction Equipment will be sold online with the bidding ending on February 5, 2019. Location of the equipment is given. Bidding within the last minute before the closing of a lot will extend the bidding time by an additional minute. Be prepared to bid accordingly. For more information, contact Del Peterson & Associates: 419 West Judy Drive Fremont NE, 68025 Phone: 800-492-9090 or 402-721-4388 Fax: 402-721-4583 E-mail: auction@delpeterson.com
Date	Tue, Feb 5, 2019
Starts at	10:00 AM
Address	PO Box 654, Fremont, NE 68026 USA
Categories	

#1 - (36) Totally Tubulars (ED833)

(36) Totally Tubulars (ED833), total of 36 fertilizer tubes from John Deere DB. Notes: Item Location: Frankfort, IN 46041 Equipment Sold "AS IS, WHERE IS": All equipment/property is sold "AS IS, WHERE IS" with no warranty or guarantees, expressed or implied, No operational assessments have been made by DPA Auctions on this item, it has been photographed ONLY.



#2 - (36) John Deere Closing Wheel Brackets (ED834)

(36) John Deere Closing Wheel Brackets (ED834), total of 36 John Deere closing wheel brackets. Notes: Item Location: Frankfort, IN 46041 Equipment Sold "AS IS, WHERE IS": All equipment/property is sold "AS IS, WHERE IS" with no warranty or guarantees, expressed or implied, No operational assessments have been made by DPA Auctions on this item, it has been photographed ONLY.



#3 - Gauge Wheel Bushings (ED835)

Gauge Wheel Bushings (ED835), lot of gauge wheel bushings. Notes: Item Location: Frankfort, IN 46041 Equipment Sold "AS IS, WHERE IS": All equipment/property is sold "AS IS, WHERE IS" with no warranty or guarantees, expressed or implied, No operational assessments have been made by DPA Auctions on this item, it has been photographed ONLY.



#4 - (16) Row Smart Box System (ED731)

(16) Row Smart Box System (ED731), total of 16 row smart box systems with harnesses, (4) smart boxes off a John Deere DB90 with wiring harnesses, can be used for spare parts. Notes: Item Location: Frankfort, IN 46041 Equipment Sold "AS IS, WHERE IS": All equipment/property is sold "AS IS, WHERE IS" with no warranty or guarantees, expressed or implied, No operational assessments have been made by DPA Auctions on this item, it has been photographed ONLY.



#5 - 16 Row Seed Tube Harness (ED762)

16 Row Seed Tube Harness (ED762), 16 row harness for a Kinze planter. Notes: Item Location: Frankfort, IN 46041 Equipment Sold "AS IS, WHERE IS": All equipment/property is sold "AS IS, WHERE IS" with no warranty or guarantees, expressed or implied, No operational assessments have been made by DPA Auctions on this item, it has been photographed ONLY.



#6 - 4 Wheel Running Gear (KMK738)

4 Wheel Running Gear (KMK738), 4 wheel running gear, 11L-15SL tires. Notes: Item Location: North Bend, NE 68649 Equipment Sold "AS IS, WHERE IS": All equipment/property is sold "AS IS, WHERE IS" with no warranty or guarantees, expressed or implied, No operational assessments have been made by DPA Auctions on this item, it has been photographed ONLY.



#7 - 4 Wheel Running Gear (KMK739)

4 Wheel Running Gear (KMK739), 4 wheel running gear, side platform, rear steps, 11L-15SL tires. Notes: Item Location: North Bend, NE 68649 Equipment Sold "AS IS, WHERE IS": All equipment/property is sold "AS IS, WHERE IS" with no warranty or guarantees, expressed or implied, No operational assessments have been made by DPA Auctions on this item, it has been photographed ONLY.



#8 - New Leader L4000G4 MultApplier (ED831)

New Leader L4000G4 MultApplier (ED831), came off a 2011 8303 Terra Gator with a L4000G4 14 ft bed, was run by a viper pro on VRT, 7 foot insert, stainless steel sideboards are included along with the parts inside the bed, worked fine when removed. Notes: Item Location: Eldorado, IL 62930 Equipment Sold "AS IS, WHERE IS": All equipment/property is sold "AS IS, WHERE IS" with no warranty or guarantees, expressed or implied, No operational assessments have been made by DPA Auctions on this item, it has been photographed ONLY.



#9 - Onan TechStar 33KW Diesel Generator (ED832)

Onan TechStar 33KW Diesel Generator (ED832), Cummins L423D diesel engine with 587 hours, 1/3 phase, diesel powered, starts, runs and generates as it should, S/N: Generator Model-33 ODL4B-15R/28462B. Notes: Item Location: Winamac, IN 46996 Equipment Sold "AS IS, WHERE IS": All equipment/property is sold "AS IS, WHERE IS" with no warranty or guarantees, expressed or implied, No operational assessments have been made by DPA Auctions on this item, it has been photographed ONLY.



#10 - Liquid Fertilizer Attachments (PZ1010)

Liquid Fertilizer Attachments (PZ1010), 16 Heavy Duty liquid fertilizer single disk openers for a John Deere 7200 planter, included mounting bars, mounting hardware, always shedded. Notes: Good condition, always shedded. Item Location: Stanford, IL 61774 Equipment Sold "AS IS, WHERE IS": All equipment/property is sold "AS IS, WHERE IS" with no warranty or guarantees, expressed or implied, No operational assessments have been made by DPA Auctions on this item, it has been photographed ONLY.



#11 - 1989 Ford F350 Bucket Truck (ED836)

1989 Ford F350 Bucket Truck (ED836), Ford F350 V8 5.8 with Versalift and service box, 32'-34' work platform, PTO driven, 6 doors on the box and one on the end, a ladder rack on passengers side, compressor and inverter, heat, tires are LT235/85R16, truck runs and drives, has only been driven local for the last 3 years, truck was in KY until March of 2016, not driven too much in the winter, so the truck has not seen much salt, shows 139,646 miles. Notes: Tools are Not Included. Item Location: Kalona, IA 52247 Equipment Sold "AS IS, WHERE IS": All equipment/property is sold "AS IS, WHERE IS" with no warranty or guarantees, expressed or implied, No operational assessments have been made by DPA Auctions on this item, it has been photographed ONLY.



#12 - 1993 Chevrolet Kodiak (AL568)

1993 Chevrolet Kodiak (AL568), Cat motor, Allison automatic transmission, AM/FM radio, New Leader 3020 spreader bed, floaters all around, no rate controller, shows 31,508 miles. Notes: NO TITLE. Item Location: Oblong, IL 62449 Equipment Sold "AS IS, WHERE IS": All equipment/property is sold "AS IS, WHERE IS" with no warranty or guarantees, expressed or implied, No operational assessments have been made by DPA Auctions on this item, it has been photographed ONLY.



#13 - 2006 Rogator 1074 (ED837)

2006 Rogator 1074 (ED837), 80 foot boom, 1050 gallon Stainless Steel solution tank, 250 HP Caterpillar 3126B motor, tire size 380/90R46, Raven Epro GPS, shows 4395.6 hours. Notes: Item Location: Dale, IN 47523 Equipment Sold "AS IS, WHERE IS": All equipment/property is sold "AS IS, WHERE IS" with no warranty or guarantees, expressed or implied, No operational assessments have been made by DPA Auctions on this item, it has been photographed ONLY.



#14 - Brandt 1070 Auger (TR6143)

Brandt 1070 Auger (TR6143), 10" x 70', PTO, hydraulic lift, sweep auger. Notes: Item Location: Northville, SD 57465 Equipment Sold "AS IS, WHERE IS": All equipment/property is sold "AS IS, WHERE IS" with no warranty or guarantees, expressed or implied, No operational assessments have been made by DPA Auctions on this item, it has been photographed ONLY.



#15 - New Leader L4000G Insert (TR7020)

New Leader L4000G Insert (TR7020), Off of 2014 Stahly dry truck removed March of 2018 and all worked well comes with side extensions and tarp. Notes: Item Location: Ord, NE 68862 Equipment Sold "AS IS, WHERE IS": All equipment/property is sold "AS IS, WHERE IS" with no warranty or guarantees, expressed or implied, No operational assessments have been made by DPA Auctions on this item, it has been photographed ONLY.



#16 - 2013 John Deere Liquid System (TR7021)

2013 John Deere Liquid System (TR7021), 120' Liquid system, Came off 2013 4940 sprayer with 1700 hrs. Notes: Item Location: Ord, NE 68862 Equipment Sold "AS IS, WHERE IS": All equipment/property is sold "AS IS, WHERE IS" with no warranty or guarantees, expressed or implied, No operational assessments have been made by DPA Auctions on this item, it has been photographed ONLY.



#18 - Double 1000 Gallon NH3 Tanks (KMK735)

Double 1000 Gallon NH3 Tanks (KMK735), double 1,000 gallon anhydrous nurse tanks, top front fill, data tags, Duo Lift heavy duty running gear, 5th wheel gear, steps, 16.5L-16.1 flotation tires. Notes: Item Location: North Bend, NE 68649 Equipment Sold "AS IS, WHERE IS": All equipment/property is sold "AS IS, WHERE IS" with no warranty or guarantees, expressed or implied, No operational assessments have been made by DPA Auctions on this item, it has been photographed ONLY.



#19 - 2005 International 4400 Cab/Chassis (NP7774)

2005 International 4400 Cab/Chassis (NP7774), DT570 diesel engine, Eaton Fuller 10 speed transmission, heat, air conditioning, Am/Fm CD radio, air ride cab, tandem axle, air suspension, 20' frame behind cab, 315/80R22.5 front tires, 11R22.5 rear tires, shows 196,872 miles. Notes: Item Location: Coal Valley, IL 61240 Equipment Sold "AS IS, WHERE IS": All equipment/property is sold "AS IS, WHERE IS" with no warranty or guarantees, expressed or implied, No operational assessments have been made by DPA Auctions on this item, it has been photographed ONLY.



#20 - 1993 IHC Dry Floater (PZ1236)

1993 IHC Dry Floater (PZ1236), DT466 diesel engine, automatic transmission, heat, Am/Fm radio, New Leader L2020GT dry spreader box, twin spinner, all hydraulic, 48x25.00-20 front tires, 66x43.00-25 rear tires, Dickey John monitors, Trimble lightbar, shows 6897 hours. Notes: Item Location: Niantic, IL 62551 Equipment Sold "AS IS, WHERE IS": All equipment/property is sold "AS IS, WHERE IS" with no warranty or guarantees, expressed or implied, No operational assessments have been made by DPA Auctions on this item, it has been photographed ONLY.



#21 - 1995 Essmueller Turn Head Distributer (KMK729)

1995 Essmueller Turn Head Distributer (KMK729), Essmueller, model S-50-4-10TE, turn head, 4 way distributer, single inlet. Notes: Item Location: Saint Joseph, MO 64504 Equipment Sold "AS IS, WHERE IS": All equipment/property is sold "AS IS, WHERE IS" with no warranty or guarantees, expressed or implied, No operational assessments have been made by DPA Auctions on this item, it has been photographed ONLY.



#22 - 2001 Hayes & Stolz Duel Swing Valve Distributer (KMK730)

2001 Hayes & Stolz Duel Swing Valve Distributer (KMK730), Hayes & Stolz, model SVED081050, duel swing valve distributer, duel inlet, 8 outlets each, 16 total outlets. Notes: Item Location: Saint Joseph, MO 64504 Equipment Sold "AS IS, WHERE IS": All equipment/property is sold "AS IS, WHERE IS" with no warranty or guarantees, expressed or implied, No operational assessments have been made by DPA Auctions on this item, it has been photographed ONLY.



#24 - Versatile 400 (DR1002)

Versatile 400 (DR1002), gas engine, hydrostatic drive, 14' windrower, reel is LOCKED UP, 11.2-24 front tires, single rear steer wheel. Notes: The reel is locked up on this Versatile. Item Location: Walthill, NE 68067 Equipment Sold "AS IS, WHERE IS": All equipment/property is sold "AS IS, WHERE IS" with no warranty or guarantees, expressed or implied, No operational assessments have been made by DPA Auctions on this item, it has been photographed ONLY.



#25 - Double 1000 Gallon NH3 Tanks (KMK736)

Double 1000 Gallon NH3 Tanks (KMK736), double 1,000 gallon anhydrous nurse tanks, top front fill, data tags, Duo Lift heavy duty running gear, 5th wheel gear, steps, 16.5L-16.1 flotation tires. Notes: Item Location: North Bend, NE 68649 Equipment Sold "AS IS, WHERE IS": All equipment/property is sold "AS IS, WHERE IS" with no warranty or guarantees, expressed or implied, No operational assessments have been made by DPA Auctions on this item, it has been photographed ONLY.



#26 - Trojan 114 Loader (DR1000)

Trojan 114 Loader (DR1000), gas engine, crab steer, shuttle shift, enclosed cab, has forks only, 14.00-24 tires, shows 6896 hours. Notes: NO BRAKES, loader runs and works great. Was used this year moving bales. Item Location: Walthill, NE 68067 Equipment Sold "AS IS, WHERE IS": All equipment/property is sold "AS IS, WHERE IS" with no warranty or guarantees, expressed or implied, No operational assessments have been made by DPA Auctions on this item, it has been photographed ONLY.



#27 - 2008 Terra Gator 9203 Dry Air Flow Floater (NP7656, Unit T-54)

2008 Terra Gator 9203 Dry Air Flow Floater (NP7656, Unit T-54), Cat C13 diesel engine (S/N LGK10215), Powershift transmission, heat, air conditioning, Am/Fm CD radio, air ride cab, AirMax 1000 dry air flow system (S/N A1J-0686), 70' stainless steel boom, 55 gallon stainless steel foam marker tank, Agri-Cover electric roll tarp, Alliance 1050/50R32 tires, Raven SmarTrax, Raven GPS, Raven Viper Pro, shows 3,794 hours. Notes: Item Location: Twin Brooks, SD 57269 Equipment Sold "AS IS, WHERE IS": All equipment/property is sold "AS IS, WHERE IS" with no warranty or guarantees, expressed or implied, No operational assessments have been made by DPA Auctions on this item, it has been photographed ONLY.



#28 - 2006 SIDUMP'R Side Dump Trailer (NP7758, Unit 642694)

2006 SIDUMP'R Side Dump Trailer (NP7758, Unit 642694), approx. 40' length, tandem axle, air ride suspension, rear fenders, 11R22.5 tires, Haldex ABS antilock brakes, GVWR 68,000lbs. Notes: Seller had the trailer inspected and found "Due to the extent of the damage on the trailer, the front and rear "tower" structures will need to be replaced, along with aligning/welding the remaining structural fractures within the frame assembly on the unit". This trailer has extensive damage and will be sold with a SALVAGE TITLE. Please contact seller for more details. Item Location: Omaha, NE 68164 Equipment Sold "AS IS, WHERE IS": All equipment/property is sold "AS IS, WHERE IS" with no warranty or guarantees, expressed or implied, No operational assessments have been made by DPA Auctions on this item, it has been photographed ONLY.



#29 - 2007 International 9200i Day Cab Truck (NP7757)

2007 International 9200i Day Cab Truck (NP7757), Cummins M11 diesel engine, Meritor 10 speed transmission, heat, air conditioning, Am/Fm radio, tandem axle, air ride suspension, air slide 5th wheel, dual fuel tanks, single stack, shows 347,426 miles. Notes: Item Location: Jefferson, IA 50129 Equipment Sold "AS IS, WHERE IS": All equipment/property is sold "AS IS, WHERE IS" with no warranty or guarantees, expressed or implied, No operational assessments have been made by DPA Auctions on this item, it has been photographed ONLY.



#30 - (4) Floater Tires off a 1074 Rogator (ED839)

(4) Floater Tires off a 1074 Rogator (ED839), total of 4 floater tires off a Rogator 1074, size 23.1R30 with 50% tread. Notes: Item Location: Dale, IN 47523 Equipment Sold "AS IS, WHERE IS": All equipment/property is sold "AS IS, WHERE IS" with no warranty or guarantees, expressed or implied, No operational assessments have been made by DPA Auctions on this item, it has been photographed ONLY.



#31 - Gehl 7190 Feed Wagon (TH403)

Gehl 7190 Feed Wagon (TH403), 540 pto, implement tires, conveyor chain is 2 years old, Notes: Always stored inside. This is a very clean unit and is ready to use. Item Location: De Witt, NE 68341 Equipment Sold "AS IS, WHERE IS": All equipment/property is sold "AS IS, WHERE IS" with no warranty or guarantees, expressed or implied, No operational assessments have been made by DPA Auctions on this item, it has been photographed ONLY.



#32 - John Deere 6068T Tier 0 60 Kilowatt Generator (TH402)

John Deere 6068T Tier 0 60 Kilowatt Generator (TH402), color digital display screen, 60 kilowatt, shows 8,417 hours, serviced and ready to go, the batteries ARE NOT included. Notes: Good clean unit. Would work well as a generator or a power unit. Item Location: Plymouth, NE 68424 Equipment Sold "AS IS, WHERE IS": All equipment/property is sold "AS IS, WHERE IS" with no warranty or guarantees, expressed or implied, No operational assessments have been made by DPA Auctions on this item, it has been photographed ONLY.



#33 - Two (2) 300 Gallon Saddle Tanks (KMK732)

Two (2) 300 Gallon Saddle Tanks (KMK732), Agri Products, two (2) 300 gallon poly saddle tanks, mounting brackets and hardware, came off 8300 series John Deere. Notes: Item Location: North Bend, NE 68649 Equipment Sold "AS IS, WHERE IS": All equipment/property is sold "AS IS, WHERE IS" with no warranty or guarantees, expressed or implied, No operational assessments have been made by DPA Auctions on this item, it has been photographed ONLY.



#34 - Two (2) 400 Gallon Saddle Tanks (KMK733)

Two (2) 400 Gallon Saddle Tanks (KMK733), Agri Products, two (2) 400 gallon poly saddle tanks, pump, mounting brackets and hardware, came off 8000 series John Deere. Notes: Item Location: North Bend, NE 68649 Equipment Sold "AS IS, WHERE IS": All equipment/property is sold "AS IS, WHERE IS" with no warranty or guarantees, expressed or implied, No operational assessments have been made by DPA Auctions on this item, it has been photographed ONLY.



#35 - Two (2) 260 Gallon Saddle Tanks (KMK734)

Two (2) 260 Gallon Saddle Tanks (KMK734), two (2) 260 gallon poly saddle tanks, pump, homemade mounting brackets and hardware, has been used on 40/50/60 series John Deere. Notes: Item Location: North Bend, NE 68649 Equipment Sold "AS IS, WHERE IS": All equipment/property is sold "AS IS, WHERE IS" with no warranty or guarantees, expressed or implied, No operational assessments have been made by DPA Auctions on this item, it has been photographed ONLY.



#37 - 2015 Terra Gator 8400B Dry Floater (PZ1228)

2015 Terra Gator 8400B Dry Floater (PZ1228), Sisu diesel engine, CVT transmission, air conditioning, heat, Am/Fm CD stereo, AirMax Precision 2 dry air flow system, 3 product, 70' stainless steel boom, Accuboom, foam marker, stainless steel foam marker tank, electric roll over tarp, Good Year 54x31.00R26 tires, Alliance & Good Year 1050/50R32 rear tires, Raven SmarTrax, lightbar, Overview dual cab camera, Raven Viper Pro monitor, shows 2838 hours. Notes: Item Location: Harristown, IL 62537 Equipment Sold "AS IS, WHERE IS": All equipment/property is sold "AS IS, WHERE IS" with no warranty or guarantees, expressed or implied, No operational assessments have been made by DPA Auctions on this item, it has been photographed ONLY.



#38 - Double 1000 Gallon NH3 Tanks (KMK737)

Double 1000 Gallon NH3 Tanks (KMK737), double 1,000 gallon anhydrous nurse tanks, top front fill, data tags, Duo Lift heavy duty running gear, 5th wheel gear, steps, 16.5L-16.1 flotation tires. Notes: Item Location: North Bend, NE 68649 Equipment Sold "AS IS, WHERE IS": All equipment/property is sold "AS IS, WHERE IS" with no warranty or guarantees, expressed or implied, No operational assessments have been made by DPA Auctions on this item, it has been photographed ONLY.



#39 - Yetter Nitrogen Bar (KMK740)

Yetter Nitrogen Bar (KMK740), high clearance bar, 16 row, 30" centers, quick attach feature, came off John Deere 4830 sprayer. Notes: Item Location: North Bend, NE 68649 Equipment Sold "AS IS, WHERE IS": All equipment/property is sold "AS IS, WHERE IS" with no warranty or guarantees, expressed or implied, No operational assessments have been made by DPA Auctions on this item, it has been photographed ONLY.



#40 - 2016 Christianson Systems Grain Vac (PZ0628)

2016 Christianson Systems Grain Vac (PZ0628), 2016 Christianson systems model VacBoss 6068D grain vac, Cat diesel engine, 6000 bushel per hour. Notes: Item Location: Cissna Park, IL 60924 Equipment Sold "AS IS, WHERE IS": All equipment/property is sold "AS IS, WHERE IS" with no warranty or guarantees, expressed or implied, No operational assessments have been made by DPA Auctions on this item, it has been photographed ONLY.



#41 - 2006 CaseIH SPX 3310 Sprayer (PZ0760)

2006 CaseIH SPX 3310 Sprayer (PZ0760), diesel engine, hydrostatic transmission, air conditioning, heat, Am/Fm cassette radio, 1000 gallon stainless steel liquid system, 100' boom, foam marker, poly foam marker tank, top poly rinse tank, front fill, Michelin Agribib 380/90R46 tires, Raven SCS4600 monitor, lightbar, shows 3803 hours. Notes: Seller has the 90' booms that came with machine. Numerous new parts will go with the sprayer, please call seller for more information. Item Location: Brook, IN 47922 Equipment Sold "AS IS, WHERE IS": All equipment/property is sold "AS IS, WHERE IS" with no warranty or guarantees, expressed or implied, No operational assessments have been made by DPA Auctions on this item, it has been photographed ONLY.



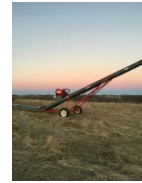
#42 - Sprayer Booms (PZ1104)

Sprayer Booms (PZ1104), 60' booms with rack, No tank included. Notes: Item Location: Dunbar, NE 68346 Equipment Sold "AS IS, WHERE IS": All equipment/property is sold "AS IS, WHERE IS" with no warranty or guarantees, expressed or implied, No operational assessments have been made by DPA Auctions on this item, it has been photographed ONLY.



#43 - Kraus Field Loader Conveyor (NP7756)

Kraus Field Loader Conveyor (NP7756), stainless steel, 24" belt, portable, Kohler Magnum20 gas motor, push button start. Notes: NEW belt & top drive, never ran a load since installed. Item Location: Horton, KS 66439 Equipment Sold "AS IS, WHERE IS": All equipment/property is sold "AS IS, WHERE IS" with no warranty or guarantees, expressed or implied, No operational assessments have been made by DPA Auctions on this item, it has been photographed ONLY.



#44 - Sunflower Disk (PZ1103)

Sunflower Disk (PZ1103) Model G-14, hydraulic fold, walking tandem, 9.5L-14 tires. Notes: Item Location: Dunbar, NE 68346 Equipment Sold "AS IS, WHERE IS": All equipment/property is sold "AS IS, WHERE IS" with no warranty or guarantees, expressed or implied, No operational assessments have been made by DPA Auctions on this item, it has been photographed ONLY.



#45 - 1997 Jet Hopper (DR1127)

1997 Jet Hopper (DR1127), 22' single axle, side sight glass windows, roll tarp, 10.00-20 tires. Notes: Item Location: Akron, IA 51001 Equipment Sold "AS IS, WHERE IS": All equipment/property is sold "AS IS, WHERE IS" with no warranty or guarantees, expressed or implied, No operational assessments have been made by DPA Auctions on this item, it has been photographed ONLY.



#46 - 2012 Feterl Auger (DR1131)

2012 Feterl Auger (DR1131), model 12112, 112' X 12" grain auger, hydraulic swing hopper, hydraulic up/down, dual auger hopper, 540 PTO, factory defective gear box has been replaced. Notes: Has very little use. Item Location: Newcastle, NE 68757 Equipment Sold "AS IS, WHERE IS": All equipment/property is sold "AS IS, WHERE IS" with no warranty or guarantees, expressed or implied, No operational assessments have been made by DPA Auctions on this item, it has been photographed ONLY.



#48 - 2012 Speed King Tender (DR1130)

2012 Speed King Tender (DR1130), 330 bushel automatic self contained seed tender, Honda gas engine w/electric start, scale head, side sight glass windows, swing conveyor, 2 remotes, roll tarp, rear hitch, triple axle gooseneck gear, 235/80R16 tires. Notes: Has NO TITLE. Item Location: Newcastle, NE 68757 Equipment Sold "AS IS, WHERE IS": All equipment/property is sold "AS IS, WHERE IS" with no warranty or guarantees, expressed or implied, No operational assessments have been made by DPA Auctions on this item, it has been photographed ONLY.



#49 - 2005 Freightliner Columbia Day Cab (PD1183)

2005 Freightliner Columbia Day Cab (PD1183), 12.7 Detroit engine, 10 speed transmission, shows 748,640 miles. Notes: Item Location: Perryville, MO 63775 Equipment Sold "AS IS, WHERE IS": All equipment/property is sold "AS IS, WHERE IS" with no warranty or guarantees, expressed or implied, No operational assessments have been made by DPA Auctions on this item, it has been photographed ONLY.



#51 - 2003 SRES Advanced Research Planter (NP7770)

2003 SRES Advanced Research Planter (NP7770), 8 row, 30" spacing, Kinze 3500 planter frame, Monosem row units, PTO driven vacuum, Puma PUK-60 air compressor, comes with Monosem 2450 corn plates and 6045 soybean plates, insecticide boxes with smart box meters attached, WaveVision seed tubes, Yetter trash whips, swinging 4th wheel for transport, NO plot tripping mechanism, buyer will need to retrofit with their own tripping system. Notes: Item Location: Whitestown, IN 46075 Equipment Sold "AS IS, WHERE IS": All equipment/property is sold "AS IS, WHERE IS" with no warranty or guarantees, expressed or implied, No operational assessments have been made by DPA Auctions on this item, it has been photographed ONLY.



#52 - 2001 International 8100 (TR6080 Unit 4534)

2001 International 8100 (TR6080 Unit 4534), Cat diesel engine, 10 speed transmission, tandem axle full screw, air ride suspension, Willmar Side Shooter 16 ton hydraulic stainless steel dry fertilizer tender box, roll tarp, AM/FM cassette radio, air conditioning, 22.5 tires, shows 147,535 miles. Notes: Item Location: Winnebago, MN 56098 Equipment Sold "AS IS, WHERE IS": All equipment/property is sold "AS IS, WHERE IS" with no warranty or guarantees, expressed or implied, No operational assessments have been made by DPA Auctions on this item, it has been photographed ONLY.



#53 - 1992 Peterbilt 377 Dry Tender Truck (DR1191)

1992 Peterbilt 377 Dry Tender Truck (DR1191), diesel engine, Chandler 16 ton dry tender box, side discharge auger, NEW hydraulic pump and horizontal auger rebuilt in Fall of 2017, shows 439,490 miles. Notes: Item Location: Winnebago, MN 56098 Equipment Sold "AS IS, WHERE IS": All equipment/property is sold "AS IS, WHERE IS" with no warranty or guarantees, expressed or implied, No operational assessments have been made by DPA Auctions on this item, it has been photographed ONLY.



#54 - Speed King Blender (DR1158)

Speed King Blender (DR1158), 10 ton rebuilt dry blender, 40' stainless steel loadout conveyor, stainless steel electric drive drum blender, stainless steel hopper, poly chemical impregnators, digital truck readout, digital scale head, remote blender controls, ticket printer. Notes: Ticket printer DOES NOT SELL. New belt and new rollers in spring of 2017. Electrical will be unhooked and ready to load. Seller has no way to load for buyer, dismantle, removal and transportation will be at the risk and expense of the buyer. Item Location: Allen, NE 68710 Equipment Sold "AS IS, WHERE IS": All equipment/property is sold "AS IS, WHERE IS" with no warranty or guarantees, expressed or implied, No operational assessments have been made by DPA Auctions on this item, it has been photographed ONLY.



#55 - Tyler Spreader (DR1132 Unit 43A)

Tyler Spreader (DR1132 Unit 43A), 4 ton stainless steel dry buggy, tandem axle, PTO drive web chain, dual ground drive spinners, 11L-15 tires. Notes: Item Location: Nerstrand, MN 55053 Equipment Sold "AS IS, WHERE IS": All equipment/property is sold "AS IS, WHERE IS" with no warranty or guarantees, expressed or implied, No operational assessments have been made by DPA Auctions on this item, it has been photographed ONLY.



#56 - Tyler Spreader (DR1133 Unit 52B)

Tyler Spreader (DR1133 Unit 52B), 5 ton stainless steel dry buggy, tandem axle, PTO drive web chain, dual ground drive spinners, roll tarp, 11L-15 tires. Notes: Item Location: Nerstrand, MN 55053 Equipment Sold "AS IS, WHERE IS": All equipment/property is sold "AS IS, WHERE IS" with no warranty or guarantees, expressed or implied, No operational assessments have been made by DPA Auctions on this item, it has been photographed ONLY.



#58 - Parker Air Tank AA73979 (ED840)

Parker Air Tank AA73979 (ED840), 150 PSI. Notes: Item Location: Frankfort, IN 46041 Equipment Sold "AS IS, WHERE IS": All equipment/property is sold "AS IS, WHERE IS" with no warranty or guarantees, expressed or implied, No operational assessments have been made by DPA Auctions on this item, it has been photographed ONLY.



#59 - 2007 John Deere 4720 Sprayer (NP7740)

2007 John Deere 4720 Sprayer (NP7740), John Deere diesel engine, hydrostatic transmission, heat, air conditioning, Am/Fm CD radio, 800 gallon stainless steel liquid system, 90' boom, 5-way nozzle bodies, 45 gallon poly tank, John Deere pump, stainless steel chemical inductor, hydraulic tread adjust, 380/90R46 tires (6) 47KG front weights, StarFire 3000 globe, GreenStar 3 display, shows 3,004 hours. Notes: Flotation tires for this machine will sell separately on this auction. Item Location: Macon, MO 63552 Equipment Sold "AS IS, WHERE IS": All equipment/property is sold "AS IS, WHERE IS" with no warranty or guarantees, expressed or implied, No operational assessments have been made by DPA Auctions on this item, it has been photographed ONLY.



#60 - Anhydrous Storage Tank (NP7736)

Anhydrous Storage Tank (NP7736), 1956 Lubbock Machine & Supply Company, 15,000 gallon capacity, saddles, data plate, S/N 43723, Nat'l Board #949. Notes: This item must be dismantled and removed by May 5, 2019, no exceptions. Dismantle, removal and transportation is at the expense, risk and liability of the buyer. Item Location: Macon, MO 63552 Equipment Sold "AS IS, WHERE IS": All equipment/property is sold "AS IS, WHERE IS" with no warranty or guarantees, expressed or implied, No operational assessments have been made by DPA Auctions on this item, it has been photographed ONLY.



#61 - 2002 SRES Advanced Research Planter (NP7769)

2002 SRES Advanced Research Planter (NP7769), 8 row, 30" spacing, Kinze 3500 planter frame, Monosem row units, PTO driven vacuum, Puma PUK-60 air compressor, comes with Monosem 2450 corn plates and 6045 soybean plates, insecticide boxes with smart box meters attached, WaveVision seed tubes, Yetter trash whips, AVCOMM headsets, swinging 4th wheel for transport, NO plot tripping mechanism, buyer will need to retrofit with their own tripping system. Notes: Item Location: Union City, TN 38281 Equipment Sold "AS IS, WHERE IS": All equipment/property is sold "AS IS, WHERE IS" with no warranty or guarantees, expressed or implied, No operational assessments have been made by DPA Auctions on this item, it has been photographed ONLY.



#62 - Doyle Dry Tender Box (NP7753)

Doyle Dry Tender Box (NP7753), 16 ton capacity, 2 compartment, 409 stainless steel, side discharge auger, front/rear mount ladder, manual tarp, hydraulic controls, hydraulic tank. Notes: Item Location: Palmyra, MO 63461 Equipment Sold "AS IS, WHERE IS": All equipment/property is sold "AS IS, WHERE IS" with no warranty or guarantees, expressed or implied, No operational assessments have been made by DPA Auctions on this item, it has been photographed ONLY.



#63 - Gehl 125 Grinder Mixer (LD110)

Gehl 125 Grinder Mixer (LD110), auger PTO drive, digital scale, always shedded. Notes: Contact seller with any questions . Item Location: Denmark, WI 54208 Equipment Sold "AS IS, WHERE IS": All equipment/property is sold "AS IS, WHERE IS" with no warranty or guarantees, expressed or implied, No operational assessments have been made by DPA Auctions on this item, it has been photographed ONLY.



#65 - 2000 Case 721C Articulated Payloader (PD1173, Unit 79936)

2000 Case 721C Articulated Payloader (PD1173, Unit 79936), 6T 830 engine, 4f/3r proportional w/ electronic module torque transmission, 3391 hours. Notes: Item Location: Big Lake, MN 55309 Equipment Sold "AS IS, WHERE IS": All equipment/property is sold "AS IS, WHERE IS" with no warranty or guarantees, expressed or implied, No operational assessments have been made by DPA Auctions on this item, it has been photographed ONLY.



#66 - Clipper Super X29D (AL576)

Clipper Super X29D (AL576), Variable shoe shake adjustable pitch screens, variable air regulator, double brush screen cleaner, 152"Lx76"Wx95"H, screen size 42"x60", 4 screens total. Notes: Item Location: Carlisle, AR 72024 Equipment Sold "AS IS, WHERE IS": All equipment/property is sold "AS IS, WHERE IS" with no warranty or guarantees, expressed or implied, No operational assessments have been made by DPA Auctions on this item, it has been photographed ONLY.



#67 - 72" Skid Steer Mount Snow Blower (KMK731)

72" Skid Steer Mount Snow Blower (KMK731), Skid Pro SP-01-1501, Accessories Unlimited, skid steer mount snow blower, quick attach bracket, 72" wide, single auger, hydraulic rotator and deflector. Notes: Used one time. Too wide for our needs. Item Location: Valley, NE 68064 Equipment Sold "AS IS, WHERE IS": All equipment/property is sold "AS IS, WHERE IS" with no warranty or guarantees, expressed or implied, No operational assessments have been made by DPA Auctions on this item, it has been photographed ONLY.



#68 - 1998 Ford Dry Floater (NP7741)

1998 Ford Dry Floater (NP7741), Cummins M11 diesel engine, Allison automatic transmission, heat, cruise, BBI MagnaSpread dry spreader box (S/N F0001564), dual spinners, roll tarp, 48x31.00-20 front tires 66x43.00-25 rear tires, Ag Leader monitor, shows 75,565 miles, shows 6,384 hours. Notes: Item Location: Macon, MO 63552 Equipment Sold "AS IS, WHERE IS": All equipment/property is sold "AS IS, WHERE IS" with no warranty or guarantees, expressed or implied, No operational assessments have been made by DPA Auctions on this item, it has been photographed ONLY.



#69 - Case W14 Loader (NP7751)

Case W14 Loader (NP7751), diesel engine, cab, 16.9-24 tires. Notes: Frond windshield has major cracks. Item Location: Palmyra, MO 63461 Equipment Sold "AS IS, WHERE IS": All equipment/property is sold "AS IS, WHERE IS" with no warranty or guarantees, expressed or implied, No operational assessments have been made by DPA Auctions on this item, it has been photographed ONLY.



#70 - Totally Tubular Kit (LD112)

Totally Tubular Kit (LD112), used for 16-row John Deere planter, never been used, complete kit, never been installed. Notes: Item Location: Denmark, WI 54208 Equipment Sold "AS IS, WHERE IS": All equipment/property is sold "AS IS, WHERE IS" with no warranty or guarantees, expressed or implied, No operational assessments have been made by DPA Auctions on this item, it has been photographed ONLY.



#71 - Centerline 220 Lightbar GPS System (LD113)

Centerline 220 Lightbar GPS System (LD113), used on planter. Notes: Item Location: Denmark, WI 54208 Equipment Sold "AS IS, WHERE IS": All equipment/property is sold "AS IS, WHERE IS" with no warranty or guarantees, expressed or implied, No operational assessments have been made by DPA Auctions on this item, it has been photographed ONLY.



#72 - 2002 SRES Advanced Research Planter (NP7772)

2002 SRES Advanced Research Planter (NP7772), 8 row, 30" spacing, Kinze planter frame, Monosem row units, PTO driven vacuum, Puma PUK-60 air compressor, comes with Monosem seed plates, insecticide boxes with smart box meters attached, WaveVision seed tubes, Yetter trash whips, swinging 4th wheel for transport, NO plot tripping mechanism, buyer will need to retrofit with their own tripping system, comes with 9, 18, 24, 30 and 60 hole plates. Notes: Item Location: Waterman, IL 60556 Equipment Sold "AS IS, WHERE IS": All equipment/property is sold "AS IS, WHERE IS" with no warranty or guarantees, expressed or implied, No operational assessments have been made by DPA Auctions on this item, it has been photographed ONLY.



#74 - Early 1900's Safe (AL580)

Early 1900's Safe (AL580), 24" wide, 24" deep, 36" tall, safe combination does work, lockable compartments on the inside of the safe, made by Cary Safe Co out of Buffalo NY. Notes: Item Location: Beatrice, NE 68310 Equipment Sold "AS IS, WHERE IS": All equipment/property is sold "AS IS, WHERE IS" with no warranty or guarantees, expressed or implied, No operational assessments have been made by DPA Auctions on this item, it has been photographed ONLY.



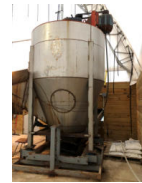
#75 - 2008 Drake Fertilizer Trailer (DL436)

2008 Drake Fertilizer Trailer (DL436), 2008 Drake fertilizer trailer with 24 ton Rayman dry tender box, all hydraulic side discharge auger, roll tarp, in working condition at last use, tires 285/75R24.5. Notes: Item Location: Caledonia, OH 43314 Equipment Sold "AS IS, WHERE IS": All equipment/property is sold "AS IS, WHERE IS" with no warranty or guarantees, expressed or implied, No operational assessments have been made by DPA Auctions on this item, it has been photographed ONLY.



#76 - Doyle Vertical Blender (DL435)

Doyle Vertical Blender (DL435), Doyle 8 ton stainless steel vertical blender, Speed King 32' stainless steel loadout conveyor, Rice Lake scale with Rice Lake Model 420HE-1A multi-function digital display & Rice Lake ticket press printer, rebuilt screw in 2014 with heavy duty metal, rebuilt 40hp 3-phase motor in 2015, all equipment in working condition. Notes: Seller can help with loading. Item Location: Caledonia, OH 43314 Equipment Sold "AS IS, WHERE IS": All equipment/property is sold "AS IS, WHERE IS" with no warranty or guarantees, expressed or implied, No operational assessments have been made by DPA Auctions on this item, it has been photographed ONLY.



#77 - 2015 Doyle Dry Tender Trailer (NP7752)

2015 Doyle Dry Tender Trailer (NP7752), 24 ton capacity, 3 compartment, 304 stainless steel, rear discharge auger, rear ladder, (3) Vibco vibrators, side mount ground vibrator controls, Agri-Cover electric roll tarp w/ side mount ground controls, Kubota diesel engine, diesel tank, hydraulic tank, LOFA Industries electric start control panel, shows 467 hours, mounted on 2015 B&B semi trailer, Model DDT24RD-38, tandem axle, spring suspension, 255/70R22.5 tires, GVWR 60,000lbs. Notes: Item Location: Palmyra, MO 63461 Equipment Sold "AS IS, WHERE IS": All equipment/property is sold "AS IS, WHERE IS" with no warranty or guarantees, expressed or implied, No operational assessments have been made by DPA Auctions on this item, it has been photographed ONLY.



#78 - (4) Firestone Flotation Tires/Rims (NP7742)

(4) Firestone Flotation Tires/Rims (NP7742), (4) Firestone flotation tires, Radial 9000, size 650/65R38, 10 bolt rim pattern, good tread. Notes: Came off John Deere 4720 Sprayer that will sell separately on this auction. Item Location: Macon, MO 63552 Equipment Sold "AS IS, WHERE IS": All equipment/property is sold "AS IS, WHERE IS" with no warranty or guarantees, expressed or implied, No operational assessments have been made by DPA Auctions on this item, it has been photographed ONLY.



#80 - Aluminum Sprayer Boom (DL437)

Aluminum Sprayer Boom (DL437), 120' aluminum sprayer boom, built by Pommier, 20" nozzle spacing, 3-way nozzle bodies, came off 4240 sprayer. Notes: These booms have had some welding done on them, they are straight and do not need further repair. Item Location: North Bend, NE 68649 Equipment Sold "AS IS, WHERE IS": All equipment/property is sold "AS IS, WHERE IS" with no warranty or guarantees, expressed or implied, No operational assessments have been made by DPA Auctions on this item, it has been photographed ONLY.



#81 - 1995 Freightliner FLD120 (TR5001)

1995 Freightliner FLD120 (TR5001), diesel engine, model FLD12064T, 609,297 miles, tandem axle, air brakes, damaged with salvage title. Notes: SALVAGE TITLE. Item Location: Paynesville, MN 56362 Equipment Sold "AS IS, WHERE IS": All equipment/property is sold "AS IS, WHERE IS" with no warranty or guarantees, expressed or implied, No operational assessments have been made by DPA Auctions on this item, it has been photographed ONLY.



#82 - 2003 John Deere 1690 Planter (PZ1222)

2003 John Deere 1690 Planter (PZ1222), 2003 John Deere 1690 35' 15" Soybean special, white meter wheels, planter always stored inside, waxed yearly, original tires, row units rebuilt by JD Smith implements, Richmond, IN in March 2014, monitor, control box, controlled by a Precision planting 20/20 Gen 1 with Fieldview module and ram mount for a tablet, planter is set up with dawn spiked closing wheel springs, extra seed cups closing wheel springs, hydraulic drive and variable rate seeding, Upgraded to narrow firming wheels. Notes: Bought New took delivery in March 2004. Item Location: Brookville, OH 45309 Equipment Sold "AS IS, WHERE IS": All equipment/property is sold "AS IS, WHERE IS" with no warranty or guarantees, expressed or implied, No operational assessments have been made by DPA Auctions on this item, it has been photographed ONLY.



#83 - Flotation Tires (PZ1223)

Flotation Tires (PZ1223), 2 - 66x43.00-25 flotation tires, held air when taken off, minimal tread left. Notes: Item Location: Walcott, IA 52773 Equipment Sold "AS IS, WHERE IS": All equipment/property is sold "AS IS, WHERE IS" with no warranty or guarantees, expressed or implied, No operational assessments have been made by DPA Auctions on this item, it has been photographed ONLY.



#84 - 2003 SRES Advanced Research Planter (NP7773)

2003 SRES Advanced Research Planter (NP7773), 8 row, 30" spacing, Kinze planter frame, Monosem row units, PTO driven vacuum, Puma PUK-60 air compressor, comes with Monosem seed plates, insecticide boxes with smart box meters attached, WaveVision seed tubes, Yetter trash whips, swinging 4th wheel for transport, NO plot tripping mechanism, buyer will need to retrofit with their own tripping system, comes with 24, 30 and 60 hole plates, bulk seed hoppers. Notes: Item Location: Waterman, IL 60556 Equipment Sold "AS IS, WHERE IS": All equipment/property is sold "AS IS, WHERE IS" with no warranty or guarantees, expressed or implied, No operational assessments have been made by DPA Auctions on this item, it has been photographed ONLY.



#85 - 2012 Wilson Hopper Bottom (PD1182)

2012 Wilson Hopper Bottom (PD1182), 41X96X66, ag hoppers, air ride suspension. Notes: Item Location: Perryville, MO 63775 Equipment Sold "AS IS, WHERE IS": All equipment/property is sold "AS IS, WHERE IS" with no warranty or guarantees, expressed or implied, No operational assessments have been made by DPA Auctions on this item, it has been photographed ONLY.



#86 - 8 Row Corn Reel (AL579)

8 Row Corn Reel (AL579), came off a 608 John Deere, selling only for the reason I went to a 12 row head only. Notes: Item Location: Danbury, IA 51019 Equipment Sold "AS IS, WHERE IS": All equipment/property is sold "AS IS, WHERE IS" with no warranty or guarantees, expressed or implied, No operational assessments have been made by DPA Auctions on this item, it has been photographed ONLY.



#87 - 16 John Deere Disk Fertilizer Openers (PD1174)

16 John Deere Disk Fertilizer Openers (PD1174), from John Deere 1770 NT planters, recently completely rebuilt, all new disk, new bearings, new Moeller fertilizer knife, new bolts and nuts. Notes: Item Location: Monticello, IA 52310 Equipment Sold "AS IS, WHERE IS": All equipment/property is sold "AS IS, WHERE IS" with no warranty or guarantees, expressed or implied, No operational assessments have been made by DPA Auctions on this item, it has been photographed ONLY.



#88 - 1997 Chevy C5500 Flatbed Truck (NP7750)

1997 Chevy C5500 Flatbed Truck (NP7750), Cat 3116 diesel engine, manual transmission, heat, Am/Fm radio, single axle, spring suspension, steel flatbed (S/N 102991-4), hoist, 235/80R22.5 tires, shows 320,772 miles. Notes: Item Location: Palmyra, MO 63461 Equipment Sold "AS IS, WHERE IS": All equipment/property is sold "AS IS, WHERE IS" with no warranty or guarantees, expressed or implied, No operational assessments have been made by DPA Auctions on this item, it has been photographed ONLY.



#89 - Gustafson HC 2000 Treater (AL577)

Gustafson HC 2000 Treater (AL577), with out conveyor and hoppers, treats 2000 bushels an hour, drum 8'x36" has variable speed control with a drum lift bar and adjustable stand, has Mist-O-Matic atomizer (no seed wheel) with a seed sensor to stop when seed is unavailable, control box is set up with 4 pumps to accommodate 4 slurry mix tanks, includes (2) 60 gallon poly tanks and (1) 30 gallon inoculant tank, new Bayer flow meter kit (380495684) for easy calibration, out conveyor is 30' long by 19" wide, overhead hopper is 13' high with attached steel stairs, out hopper is 10' tall, everything has been cleaned and serviced following previous treating season. Notes: Item Location: Holstein, IA 51025 Equipment Sold "AS IS, WHERE IS": All equipment/property is sold "AS IS, WHERE IS" with no warranty or guarantees, expressed or implied, No operational assessments have been made by DPA Auctions on this item, it has been photographed ONLY.



#91 - New Holland Cab (DL434)

New Holland Cab (DL434), New Holland Chopper / Harvester cab, brand new, model FR500. Notes: Item Location: Biglerville, PA 17307 Equipment Sold "AS IS, WHERE IS": All equipment/property is sold "AS IS, WHERE IS" with no warranty or guarantees, expressed or implied, No operational assessments have been made by DPA Auctions on this item, it has been photographed ONLY.



#92 - Doyle Drum Blender (NP7737)

Doyle Drum Blender (NP7737), approx. 6 ton capacity, Leeson 15HP 3 phase motor, S/N 21317, Doyle stainless steel hopper, hopper loadout conveyor, 18" belt, Rice Lake Model RL20000ST weighing systems (S/N 31268648), Rice Lake 420HE digital readout, Doyle stationary loadout conveyor (S/N 150824A2724), approx. 27' length x 24" belt, Toshiba 7.5HP electric motor, stand. Notes: Dismantle, removal and transportation is at the expense, risk and liability of the buyer. Item Location: Macon, MO 63552 Equipment Sold "AS IS, WHERE IS": All equipment/property is sold "AS IS, WHERE IS" with no warranty or guarantees, expressed or implied, No operational assessments have been made by DPA Auctions on this item, it has been photographed ONLY.



#93 - BBI Dry Spreader (NP7743)

BBI Dry Spreader (NP7743), Model PTAG, 6 ton capacity, pull type, hydraulic, dual spinners, mesh chain, tandem axle, 16.5L-16.1 float tires. Notes: Item Location: Macon, MO 63552 Equipment Sold "AS IS, WHERE IS": All equipment/property is sold "AS IS, WHERE IS" with no warranty or guarantees, expressed or implied, No operational assessments have been made by DPA Auctions on this item, it has been photographed ONLY.



#94 - 1998 Merritt Grain Trailer (PZ1218, Unit 33539)

1998 Merritt Grain Trailer (PZ1218, Unit 33539), 1998 Merritt aluminum hopper bottom grain trailer, tandem axle, spring suspension, roll over tarp, 285/75R24.5 tires. Notes: PLEASE ALLOW AT LEAST 60 DAYS FOR TITLE TRANSFER. Item Location: Independence, IA 50644 Equipment Sold "AS IS, WHERE IS": All equipment/property is sold "AS IS, WHERE IS" with no warranty or guarantees, expressed or implied, No operational assessments have been made by DPA Auctions on this item, it has been photographed ONLY.



#95 - 2006 Chevrolet 2500HD Extended Cab Pickup (PZ1217, Unit 42296)

2006 Chevrolet 2500HD Extended Cab Pickup (PZ1217, Unit 42296), 4x4, gas engine, automatic transmission, air conditioning, heat, Am/Fm CD stereo, cruise control, power windows & locks, running boards, LT245/75R16 tires, shows 203,849 miles. Notes: PLEASE ALLOW AT LEAST 60 DAYS FOR TITLE TRANSFER. Item Location: Independence, IA 50644 Equipment Sold "AS IS, WHERE IS": All equipment/property is sold "AS IS, WHERE IS" with no warranty or guarantees, expressed or implied, No operational assessments have been made by DPA Auctions on this item, it has been photographed ONLY.



#96 - 2011 Ford F-550 Super Duty XL Chassis (NP7748)

2011 Ford F-550 Super Duty XL Chassis (NP7748), 6.7L Power Stroke Turbo diesel engine, automatic transmission, heat, air conditioning, Am/Fm Sirius XM radio, 255/70R19.5 tires, tow package, shows 243,133 miles. Notes: Item Location: Palmyra, MO 63461 Equipment Sold "AS IS, WHERE IS": All equipment/property is sold "AS IS, WHERE IS" with no warranty or guarantees, expressed or implied, No operational assessments have been made by DPA Auctions on this item, it has been photographed ONLY.



#97 - 2002 Ford F250 XLT Super Duty Extended Cab Pickup (PZ1216, Unit 33441)

2002 Ford F250 XLT Super Duty Extended Cab Pickup (PZ1216, Unit 33441), 4x4, Powerstroke diesel engine, automatic transmission, air conditioning, heat, Am/Fm cassette/CD stereo, cruise control, power windows & locks, 5th wheel ball, Western snowplow, LT265/75R16 tires, shows 206,637 miles. Notes: NO end gate. PLEASE ALLOW AT LEAST 60 DAYS FOR TITLE TRANSFER. Item Location: Independence, IA 50644 Equipment Sold "AS IS, WHERE IS": All equipment/property is sold "AS IS, WHERE IS" with no warranty or guarantees, expressed or implied, No operational assessments have been made by DPA Auctions on this item, it has been photographed ONLY.



#98 - Schaben 90 Foot 3 Point Boom (PD1191)

Schaben 90 Foot 3 Point Boom (PD1191), 5 boom sections, single nozzle body, 30 inch x 20 inch spacing, hydraulic fold, very good condition, breakaway end section, hydraulic pump, flometer and servo valve, no controller. Notes: Tanks and Tractor not included in sale. Item Location: Pine City, MN 55063 Equipment Sold "AS IS, WHERE IS": All equipment/property is sold "AS IS, WHERE IS" with no warranty or guarantees, expressed or implied, No operational assessments have been made by DPA Auctions on this item, it has been photographed ONLY.



#99 - 2011 Wilson Hopper Bottom (PD1184)

2011 Wilson Hopper Bottom (PD1184), 41X96X66, ag hoppers, air ride suspension. Notes: Trailer has PRIOR SALVAGE TITLE, was turned over but totally repaired Item Location: Perryville, MO 63775 Equipment Sold "AS IS, WHERE IS": All equipment/property is sold "AS IS, WHERE IS" with no warranty or guarantees, expressed or implied, No operational assessments have been made by DPA Auctions on this item, it has been photographed ONLY.



#100 - 2 Elliptical Helicopter Tanks (PD1189)

2 Elliptical Helicopter Tanks (PD1189), 300 Gallon came off of 8100 John Deere tractor, can run with front duals, plumbing comes with, agitators in the tank. Notes: Item Location: Pine City, MN 55063 Equipment Sold "AS IS, WHERE IS": All equipment/property is sold "AS IS, WHERE IS" with no warranty or guarantees, expressed or implied, No operational assessments have been made by DPA Auctions on this item, it has been photographed ONLY.



#101 - 2600 Monitor With Globe (PD1190)

2600 Monitor With Globe (PD1190), auto swath seed pro, green star rate controller, starfire ITC. Notes: Item Location: Pine City, MN 55063 Equipment Sold "AS IS, WHERE IS": All equipment/property is sold "AS IS, WHERE IS" with no warranty or guarantees, expressed or implied, No operational assessments have been made by DPA Auctions on this item, it has been photographed ONLY.



#102 - 9 DMI Coulters (AL581)

9 DMI Coulters (AL581), 9 DMI coulters. Notes: Item Location: Sterling, IL 61081 Equipment Sold "AS IS, WHERE IS": All equipment/property is sold "AS IS, WHERE IS" with no warranty or guarantees, expressed or implied, No operational assessments have been made by DPA Auctions on this item, it has been photographed ONLY.



#103 - 9 Spring Shanks (AL583)

9 Spring Shanks (AL583), 9 spring shanks. Notes: Item Location: Sterling, IL 61081 Equipment Sold "AS IS, WHERE IS": All equipment/property is sold "AS IS, WHERE IS" with no warranty or guarantees, expressed or implied, No operational assessments have been made by DPA Auctions on this item, it has been photographed ONLY.



#104 - Dry Spreader (DL438)

Dry Spreader (DL438), 6 ton dry spreader, tandem axle, twin spinner, 540 PTO, good 16.5L-16.1 flotation tires. Notes: Item Location: Stockton, IA 52769 Equipment Sold "AS IS, WHERE IS": All equipment/property is sold "AS IS, WHERE IS" with no warranty or guarantees, expressed or implied, No operational assessments have been made by DPA Auctions on this item, it has been photographed ONLY.



#105 - Mobility Dalton Ag 1000-ADJ Dry Spreader (ED845)

Mobility Dalton Ag 1000-ADJ Dry Spreader (ED845), 10 Ton, new, never used 1000 Row Crop dry spreader, Agri-Cover SRT-2 spool roll tarp, pull hitch, tire size 380/90R46. Notes: Item Location: Oregon, MO 64473 Equipment Sold "AS IS, WHERE IS": All equipment/property is sold "AS IS, WHERE IS" with no warranty or guarantees, expressed or implied, No operational assessments have been made by DPA Auctions on this item, it has been photographed ONLY.



#106 - 2011 Ford F-550 Super Duty XL Chassis (NP7749)

2011 Ford F-550 Super Duty XL Chassis (NP7749), 6.7L Power Stroke Turbo diesel engine, automatic transmission, heat, air conditioning, Am/Fm CD radio, cruise, 255/70R19.5 tires, tow package, running boards, shows 144,928 miles. Notes: Item Location: Palmyra, MO 63461 Equipment Sold "AS IS, WHERE IS": All equipment/property is sold "AS IS, WHERE IS" with no warranty or guarantees, expressed or implied, No operational assessments have been made by DPA Auctions on this item, it has been photographed ONLY.



#108 - KSI Staging Hopper (TH424)

KSI Staging Hopper (TH424), slide gate, 78" square foot print, currently set at 71" tall. Notes: Item Location: Ringsted, IA 50578 Equipment Sold "AS IS, WHERE IS": All equipment/property is sold "AS IS, WHERE IS" with no warranty or guarantees, expressed or implied, No operational assessments have been made by DPA Auctions on this item, it has been photographed ONLY.



#109 - 2010 Wilson Hopper Bottom (PD1185)

2010 Wilson Hopper Bottom (PD1185), 41X96X66, ag hoppers, spring ride suspension. Notes: Item Location: Perryville, MO 63775 Equipment Sold "AS IS, WHERE IS": All equipment/property is sold "AS IS, WHERE IS" with no warranty or guarantees, expressed or implied, No operational assessments have been made by DPA Auctions on this item, it has been photographed ONLY.



#110 - 1984 Big A 2700 Dry Box (AL571)

1984 Big A 2700 Dry Box (AL571), Cummins 555 engine, 2 speed Allison transmission, heat, am/FM radio, New Leader L2020 bed with updated G4 spinners, new belt and bearings in dry box, new spinner valve, transmission work-rebuilt torque converter, new flex plates, new transmission front seal, new PTO pump and transmission drive box, engine work-new fuel sending unit, new fuel injectors, new exhaust turbo pipes, Goodyear 66x43-25NHS Terra tire, shows 4674 hours. Notes: Item Location: Allerton, IL 61810 Equipment Sold "AS IS, WHERE IS": All equipment/property is sold "AS IS, WHERE IS" with no warranty or guarantees, expressed or implied, No operational assessments have been made by DPA Auctions on this item, it has been photographed ONLY.



#111 - 2002 Ford F-350 Super Duty 4x4 Pickup (NP7744)

2002 Ford F-350 Super Duty 4x4 Pickup (NP7744), crew cab, Power Stroke V8 diesel engine, automatic transmission, heat, air conditioning, Am/Fm CD radio, cruise, power windows, locks and mirrors, running boards, grill guard, LT265/75R16 tires, rear flatbed/hitch, side mount tool boxes, shows 206,484 miles. Notes: Will have NEW Batteries and a NEW STARTER. Item Location: Macon, MO 63552 Equipment Sold "AS IS, WHERE IS": All equipment/property is sold "AS IS, WHERE IS" with no warranty or guarantees, expressed or implied, No operational assessments have been made by DPA Auctions on this item, it has been photographed ONLY.



#112 - 55 Gallon Poly Seed Treatment Tank (TH423)

55 Gallon Poly Seed Treatment Tank (TH423), includes agitation motor and calibration tube, single phase motor. Notes: Selling due to system upgrade and this does not fit with the new system. Item Location: Ringsted, IA 50578 Equipment Sold "AS IS, WHERE IS": All equipment/property is sold "AS IS, WHERE IS" with no warranty or guarantees, expressed or implied, No operational assessments have been made by DPA Auctions on this item, it has been photographed ONLY.



#113 - Adams Weigh Hopper and Conveyor (ED847)

Adams Weigh Hopper and Conveyor (ED847), Adams 10 Ton weigh hopper and 13 ft conveyor, new screen in the top, single point weighing system, unit needs work where the conveyor hooks to the cone, belt needs lacing and top roller needs a pulley. Notes: Buyer is responsible for loading and unit needs to be removed by March 15th, 2019. Item Location: Columbia, KY 42728 Equipment Sold "AS IS, WHERE IS": All equipment/property is sold "AS IS, WHERE IS" with no warranty or guarantees, expressed or implied, No operational assessments have been made by DPA Auctions on this item, it has been photographed ONLY.



#114 - Layco SS Vertical Blender with Load Out Conveyor (ED848)

Layco SS Vertical Blender with Load Out Conveyor (ED848), Layco 10 ton stainless steel vertical blender with approximately 36 foot load out conveyor, new screen in hopper and new bottom bearing, conveyor stand was cut when taken down and needs welded back, was working when unhooked, unit has start/stop buttons and scale read out, there is a dent in the side that doesn't affect operation. Notes: Unit needs to be removed by March 15th, 2019. Buyer is responsible for loading. Item Location: Columbia, KY 42728 Equipment Sold "AS IS, WHERE IS": All equipment/property is sold "AS IS, WHERE IS" with no warranty or guarantees, expressed or implied, No operational assessments have been made by DPA Auctions on this item, it has been photographed ONLY.



#115 - Krause Rotary Blender/Conveyors/ Weighing System (ED849)

Krause Rotary Blender/Conveyors/ Weighing System (ED849), Krause 8 ton rotary blender, approximately 27 foot load out conveyor, 13 foot conveyor from scales to blender, 4 point weighing system, gearbox is less than 5 years old, everything is working good, upgraded to a 10 ton system. Notes: Buyer is responsible for loading and unit needs to be removed by March 15th, 2019. Item Location: Columbia, KY 42728 Equipment Sold "AS IS, WHERE IS": All equipment/property is sold "AS IS, WHERE IS" with no warranty or guarantees, expressed or implied, No operational assessments have been made by DPA Auctions on this item, it has been photographed ONLY.



#116 - 1996 Vantage Dump Trailer (PD1195)

1996 Vantage Dump Trailer (PD1195), 39 Foot, good tires, aluminum rims, tandem axle, air ride suspension, barn door, new tarp, new brakes, new air bags. Notes: Item Location: Pleasant Plains, IL 62677 Equipment Sold "AS IS, WHERE IS": All equipment/property is sold "AS IS, WHERE IS" with no warranty or guarantees, expressed or implied, No operational assessments have been made by DPA Auctions on this item, it has been photographed ONLY.



#117 - 1997 Ford F-350 Diesel Power Stroke (ED843)

1997 Ford F-350 Diesel Power Stroke (ED843), 2WD, radio, heat and A/C work, all new tires in fall of 2018, large flatbed, gooseneck hitch, runs and drives, shows 188,083 miles. Notes: Item Location: Fairmount, IL 61841 Equipment Sold "AS IS, WHERE IS": All equipment/property is sold "AS IS, WHERE IS" with no warranty or guarantees, expressed or implied, No operational assessments have been made by DPA Auctions on this item, it has been photographed ONLY.



#118 - 2015 Ford F150 Lariat Crew Cab (PD1192)

2015 Ford F150 Lariat Crew Cab (PD1192), 4X4, 5.0L V8 engine, fully loaded, heated and cooled seats, auto start, auto tailgate, navigation, back up camera, rear sliding window, 142,335 miles. Notes: Item Location: Sherburn, MN 56171 Equipment Sold "AS IS, WHERE IS": All equipment/property is sold "AS IS, WHERE IS" with no warranty or guarantees, expressed or implied, No operational assessments have been made by DPA Auctions on this item, it has been photographed ONLY.



#119 - Crosby PL 50TC & 75TA Latch (AL582)

Crosby PL 50TC & 75TA Latch (AL582), 50 ton hook. Notes: Item Location: Tempe, AZ 85282 Equipment Sold "AS IS, WHERE IS": All equipment/property is sold "AS IS, WHERE IS" with no warranty or guarantees, expressed or implied, No operational assessments have been made by DPA Auctions on this item, it has been photographed ONLY.



#120 - Case IH 5400 Mulch Till Drill (LD114),

Case IH 5400 Mulch Till Drill (LD114), 15' wide, new harrow, 10" spacing on coulters, Yetter coulters caddy attached, includes an acre counter on it, always shedded, has been used for drilling cover crops. Notes: Seller has owned this drill for five years. Prior owner drilled soybeans on small acre with it. Item Location: Harlan, IA 51537 Equipment Sold "AS IS, WHERE IS": All equipment/property is sold "AS IS, WHERE IS" with no warranty or guarantees, expressed or implied, No operational assessments have been made by DPA Auctions on this item, it has been photographed ONLY.



#120A - Raven Viper 4 (ED846)

Raven Viper 4 (ED846), Raven Viper with variable rate, new, never used, complete kit. Notes: Item Location: Oregon, MO 64473 Equipment Sold "AS IS, WHERE IS": All equipment/property is sold "AS IS, WHERE IS" with no warranty or guarantees, expressed or implied, No operational assessments have been made by DPA Auctions on this item, it has been photographed ONLY.



#121 - 1991 Mercedes Benz 350 SD (DL433)

1991 Mercedes Benz 350 SD (DL433), 3.5L L6 SOHC 12V turbo engine, automatic transmission, AM/FM/Cassette, power windows, locks, mirrors and seats, leather interior, cruise, telescoping steering wheel, AC & heat, power sunroof, shows 240,831 miles. Notes: Vehicle will start, may need a fuel prime or starting fluid first but runs good. Good body w/ a couple small door dings here and there. Driver's side window does stick. Minor oil leak. Item Location: Wellsville, MO 63384 Equipment Sold "AS IS, WHERE IS": All equipment/property is sold "AS IS, WHERE IS" with no warranty or guarantees, expressed or implied, No operational assessments have been made by DPA Auctions on this item, it has been photographed ONLY.



#122 - Lima Mac Generator (TH412)

Lima Mac Generator (TH412), 60 hz, 480 volts, 15 amps. Notes: Item Location: De Witt, NE 68341 Equipment Sold "AS IS, WHERE IS": All equipment/property is sold "AS IS, WHERE IS" with no warranty or guarantees, expressed or implied, No operational assessments have been made by DPA Auctions on this item, it has been photographed ONLY.



#123 - 30' Steel Pivot Bridge (TH416)

30' Steel Pivot Bridge (TH416), 30', steel construction. Notes: Item Location: De Witt, NE 68341 Equipment Sold "AS IS, WHERE IS": All equipment/property is sold "AS IS, WHERE IS" with no warranty or guarantees, expressed or implied, No operational assessments have been made by DPA Auctions on this item, it has been photographed ONLY.



#124 - 35' Steel Pivot Bridge (TH417)

35' Steel Pivot Bridge (TH417), 30', steel construction. Notes: Item Location: De Witt, NE 68341 Equipment Sold "AS IS, WHERE IS": All equipment/property is sold "AS IS, WHERE IS" with no warranty or guarantees, expressed or implied, No operational assessments have been made by DPA Auctions on this item, it has been photographed ONLY.



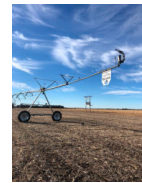
#125 - 2007 Zimmatic 7 Tower Pivot (TH404)

2007 Zimmatic 7 Tower Pivot (TH404), 1256.5 ft, set up for 700 gpm at 50 psi, 11.2 x 24 tires, reverser, I-wob nozzles, vision panel, booster pump, section 27-5-3. Notes: This item must be removed by March 15th with no exceptions. Dismantle, removal and transportation is at the expense, risk and liability if the buyer. Item Location: De Witt, NE 68341 Equipment Sold "AS IS, WHERE IS": All equipment/property is sold "AS IS, WHERE IS" with no warranty or guarantees, expressed or implied, No operational assessments have been made by DPA Auctions on this item, it has been photographed ONLY.



#126 - 2016 Reinke 7 Tower Pivot (TH405)

2016 Reinke 7 Tower Pivot (TH405), 1137 ft, set up for 325 gpm at 29 psi, 11.2-38 tires, rotator nozzles, booster pump, Ontrac touchscreen panel, section 18-5-4. Notes: This item must be removed by March 15th with no exceptions. Dismantle, removal and transportation is at the expense, risk and liability if the buyer. Item Location: De Witt, NE 68341 Equipment Sold "AS IS, WHERE IS": All equipment/property is sold "AS IS, WHERE IS" with no warranty or guarantees, expressed or implied, No operational assessments have been made by DPA Auctions on this item, it has been photographed ONLY.



#127 - 2007 Zimmatic 7 Tower Pivot (TH406)

2007 Zimmatic 7 Tower Pivot (TH406), 1289.5 ft, setup for 700 gpm, 14.9-24 tires, reverser, booster pump, I-wob nozzles, Vision panel. Notes: This item must be removed by March 15th with no exceptions. Dismantle, removal and transportation is at the expense, risk and liability if the buyer. Item Location: De Witt, NE 68341 Equipment Sold "AS IS, WHERE IS": All equipment/property is sold "AS IS, WHERE IS" with no warranty or guarantees, expressed or implied, No operational assessments have been made by DPA Auctions on this item, it has been photographed ONLY.



#128 - 2014 Valley 7 Tower Pivot (TH407)

2014 Valley 7 Tower Pivot (TH407), model 7000, 1302.2 ft, 800 gpm at 35 psi, 11.2-38 tires, Select 2 panel, booster pump, reverser, I-wob nozzles, section 34-5-3. Notes: This item must be removed by March 15th with no exceptions. Dismantle, removal and transportation is at the expense, risk and liability if the buyer. Item Location: De Witt, NE 68341 Equipment Sold "AS IS, WHERE IS": All equipment/property is sold "AS IS, WHERE IS" with no warranty or guarantees, expressed or implied, No operational assessments have been made by DPA Auctions on this item, it has been photographed ONLY.



#129 - 2014 John Deere 4045T Irrigation Motor/ Power Unit (TH408)

2014 John Deere 4045T Irrigation Motor/ Power Unit (TH408), 2016.3. Notes: Dismantle, removal and transportation is at the expense, risk and liability if the buyer. Item Location: De Witt, NE 68341 Equipment Sold "AS IS, WHERE IS": All equipment/property is sold "AS IS, WHERE IS" with no warranty or guarantees, expressed or implied, No operational assessments have been made by DPA Auctions on this item, it has been photographed ONLY.



#131 - John Deere 4045T Irrigation Motor/ Power Unit (TH411)

John Deere 4045T Irrigation Motor/ Power Unit (TH411), 1031.4 hours. Notes: Dismantle, removal and transportation is at the expense, risk and liability if the buyer. Item Location: De Witt, NE 68341 Equipment Sold "AS IS, WHERE IS": All equipment/property is sold "AS IS, WHERE IS" with no warranty or guarantees, expressed or implied, No operational assessments have been made by DPA Auctions on this item, it has been photographed ONLY.



#132 - 1000 Gallon Fuel Tank (TH414)

1000 Gallon Fuel Tank (TH414), shutoff valve plus filter. Notes: Item Location: De Witt, NE 68341 Equipment Sold "AS IS, WHERE IS": All equipment/property is sold "AS IS, WHERE IS" with no warranty or guarantees, expressed or implied, No operational assessments have been made by DPA Auctions on this item, it has been photographed ONLY.



#133 - 500 Gallon Fuel Tank (TH415)

500 Gallon Fuel Tank (TH415), shutoff valve and filter. Notes: Item Location: De Witt, NE 68341 Equipment Sold "AS IS, WHERE IS": All equipment/property is sold "AS IS, WHERE IS" with no warranty or guarantees, expressed or implied, No operational assessments have been made by DPA Auctions on this item, it has been photographed ONLY.



#134 - Ronk Phase Invertor (TH413)

Ronk Phase Invertor (TH413), single phase to 480 volts, ran a Zimattic pivot. Notes: Item Location: De Witt, NE 68341 Equipment Sold "AS IS, WHERE IS": All equipment/property is sold "AS IS, WHERE IS" with no warranty or guarantees, expressed or implied, No operational assessments have been made by DPA Auctions on this item, it has been photographed ONLY.



#135 - Amarillo Gear Head (TH410)

Amarillo Gear Head (TH410), horizontal 11, vertical 10. Notes: Item Location: De Witt, NE 68341 Equipment Sold "AS IS, WHERE IS": All equipment/property is sold "AS IS, WHERE IS" with no warranty or guarantees, expressed or implied, No operational assessments have been made by DPA Auctions on this item, it has been photographed ONLY.



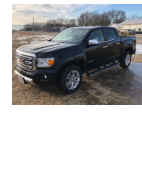
#136 - Amarillo Gear Head (TH409)

Amarillo Gear Head (TH409), horizontal 6, vertical 5. Notes: Item Location: De Witt, NE 68341 Equipment Sold "AS IS, WHERE IS": All equipment/property is sold "AS IS, WHERE IS" with no warranty or guarantees, expressed or implied, No operational assessments have been made by DPA Auctions on this item, it has been photographed ONLY.



#137 - 2016 GMC Canyon SLT Crew Cab (PD1193)

2016 GMC Canyon SLT Crew Cab (PD1193), 4X4, 3.6L V6 engine, 1 owner salesman's pickup, fully loaded, auto start, Bose stereo, heated leather seats, back sliding window, navigation, back up camera, extremely clean, 150,000 miles. Notes: Item Location: Sherburn, MN 56171 Equipment Sold "AS IS, WHERE IS": All equipment/property is sold "AS IS, WHERE IS" with no warranty or guarantees, expressed or implied, No operational assessments have been made by DPA Auctions on this item, it has been photographed ONLY.



#138 - Case IH Pro 700 (DR1134)

Case IH Pro 700 (DR1134), MY2015 Display, Pro 700 monitor is on Version 31 large tractor which is compatible with any Case IH or New Holland MFWD or 4WD tractor. Any CHN dealer can load new software on the Pro 700 for any tractor, combine or sprayer application. This lot includes ram bar for Case IH AFS & New Holland Inteliview Ready equipment. Notes: Shipping costs are \$20 via UPS in Continental US. Item Location: Morris, MN 56267 Equipment Sold "AS IS, WHERE IS": All equipment/property is sold "AS IS, WHERE IS" with no warranty or guarantees, expressed or implied, No operational assessments have been made by DPA Auctions on this item, it has been photographed ONLY.



#139 - Case IH Pro 700 (DR1135)

Case IH Pro 700 (DR1135), MY2015 Display, Pro 700 monitor is on Version 31 large tractor which is compatible with any Case IH or New Holland MFWD or 4WD tractor. Any CHN dealer can load new software on the Pro 700 for any tractor, combine or sprayer application. This lot includes ram bar for Case IH AFS & New Holland Inteliview Ready equipment. Notes: Shipping costs are \$20 via UPS in Continental US. Item Location: Morris, MN 56267 Equipment Sold "AS IS, WHERE IS": All equipment/property is sold "AS IS, WHERE IS" with no warranty or guarantees, expressed or implied, No operational assessments have been made by DPA Auctions on this item, it has been photographed ONLY.



#140 - Case IH Pro 700 (DR1136)

Case IH Pro 700 (DR1136), MY2015 Display, Pro 700 monitor is on Version 31 large tractor which is compatible with any Case IH or New Holland MFWD or 4WD tractor. Any CHN dealer can load new software on the Pro 700 for any tractor, combine or sprayer application. This lot includes ram bar for Case IH AFS & New Holland Inteliview Ready equipment. Notes: Shipping costs are \$20 via UPS in Continental US. Item Location: Morris, MN 56267 Equipment Sold "AS IS, WHERE IS": All equipment/property is sold "AS IS, WHERE IS" with no warranty or guarantees, expressed or implied, No operational assessments have been made by DPA Auctions on this item, it has been photographed ONLY.



#141 - Trimble CFX-750 (DR1137)

Trimble CFX-750 (DR1137), monitor RTK & Glonass unlocked. This monitor is unlocked for DGPS, Omnistar XP/HP, Centerpoint RTX, RTK & Glonass. It is Firmware Version 7.77 and has 1619 hours total run time. It includes cables, antenna cable, ram mount, and ag25. Notes: Shipping costs are \$20 via UPS in Continental US. Item Location: Morris, MN 56267 Equipment Sold "AS IS, WHERE IS": All equipment/property is sold "AS IS, WHERE IS" with no warranty or guarantees, expressed or implied, No operational assessments have been made by DPA Auctions on this item, it has been photographed ONLY.



#142 - 2014 Case IH 372 (DR1138)

2014 Case IH 372 (DR1138), unit is unlocked to RTK w/900mHz radio. This 372 can receive Omnistar, Centerpoint RTK, RTK w/Glonass signals. The receiver is currently on Version 8.30 and is compatible with any Case IH AFS & New Holland Intelliview tractors, combines or sprayers. This unit includes mounting bracket for Case IH AFS & New Holland Intelliview ready tractors. Notes: Shipping costs are \$20 via UPS in Continental US. Item Location: Morris, MN 56267 Equipment Sold "AS IS, WHERE IS": All equipment/property is sold "AS IS, WHERE IS" with no warranty or guarantees, expressed or implied, No operational assessments have been made by DPA Auctions on this item, it has been photographed ONLY.



#143 - Case IH FM10000 (DR1139)

Case IH FM10000 (DR1139), monitor RTK & Glonass unlocked w/450 mHz radio. This monitor is unlocked for DGPS, Omnistar XP/HP, Centerpoint RTK, RTK & Glonass. It is on Firmware Version 10.13 and has 2600 hours total runtime. It includes power cables, antenna cable, Ram mount, and Ag25. Notes: Shipping costs are \$20 via UPS in Continental US. Item Location: Morris, MN 56267 Equipment Sold "AS IS, WHERE IS": All equipment/property is sold "AS IS, WHERE IS" with no warranty or guarantees, expressed or implied, No operational assessments have been made by DPA Auctions on this item, it has been photographed ONLY.



#144 - Metal Siding/Roofing (DR1183)

Metal Siding/Roofing (DR1183), (40) sheets, American made, White color, 10'-4" long X 36" overlap coverage, Premium Pro Rib Profile style, 29 gauge. ALWAYS stored inside. Meets all USA building material engineering codes for Tested Tolerances for wind & snow. USA stamped seal of approval documentation on all products. Notes: Loadout IS available with flexible appointments. Can also offer hardware, trim, corners at wholesale prices. Item Location: Monroe, NE 68647 Equipment Sold "AS IS, WHERE IS": All equipment/property is sold "AS IS, WHERE IS" with no warranty or guarantees, expressed or implied, No operational assessments have been made by DPA Auctions on this item, it has been photographed ONLY.



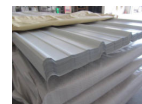
#145 - Metal Siding/Roofing (DR1184)

Metal Siding/Roofing (DR1184), (40) sheets, American made, White color, 10'-4" long X 36" overlap coverage, Premium Pro Rib Profile style, 29 gauge. ALWAYS stored inside. Meets all USA building material engineering codes for Tested Tolerances for wind & snow. USA stamped seal of approval documentation on all products. Notes: Loadout IS available with flexible appointments. Can also offer hardware, trim, corners at wholesale prices. Item Location: Monroe, NE 68647 Equipment Sold "AS IS, WHERE IS": All equipment/property is sold "AS IS, WHERE IS" with no warranty or guarantees, expressed or implied, No operational assessments have been made by DPA Auctions on this item, it has been photographed ONLY.



#146 - Metal Siding/Roofing (DR1185)

Metal Siding/Roofing (DR1185), (30) sheets, American made, White color, 14'-4" long X 36" overlap coverage, Premium Pro Rib Profile style, 29 gauge. ALWAYS stored inside. Meets all USA building material engineering codes for Tested Tolerances for wind & snow. USA stamped seal of approval documentation on all products. Notes: Loadout IS available with flexible appointments. Can also offer hardware, trim, corners at wholesale prices. Item Location: Monroe, NE 68647 Equipment Sold "AS IS, WHERE IS": All equipment/property is sold "AS IS, WHERE IS" with no warranty or guarantees, expressed or implied, No operational assessments have been made by DPA Auctions on this item, it has been photographed ONLY.



#147 - Metal Siding/Roofing (DR1186)

Metal Siding/Roofing (DR1186), (30) sheets, American made, White color, 14'-4" long X 36" overlap coverage, Premium Pro Rib Profile style, 29 gauge. ALWAYS stored inside. Meets all USA building material engineering codes for Tested Tolerances for wind & snow. USA stamped seal of approval documentation on all products. Notes: Loadout IS available with flexible appointments. Can also offer hardware, trim, corners at wholesale prices. Item Location: Monroe, NE 68647 Equipment Sold "AS IS, WHERE IS": All equipment/property is sold "AS IS, WHERE IS" with no warranty or guarantees, expressed or implied, No operational assessments have been made by DPA Auctions on this item, it has been photographed ONLY.



#148 - Metal Siding/Roofing (DR1187)

Metal Siding/Roofing (DR1187), (30) sheets, American made, White color, 16'-4" long X 36" overlap coverage, Premium Pro Rib Profile style, 29 gauge. ALWAYS stored inside. Meets all USA building material engineering codes for Tested Tolerances for wind & snow. USA stamped seal of approval documentation on all products. Notes: Loadout IS available with flexible appointments. Can also offer hardware, trim, corners at wholesale prices. Item Location: Monroe, NE 68647 Equipment Sold "AS IS, WHERE IS": All equipment/property is sold "AS IS, WHERE IS" with no warranty or guarantees, expressed or implied, No operational assessments have been made by DPA Auctions on this item, it has been photographed ONLY.



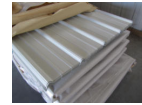
#149 - Metal Siding/Roofing (DR1188)

Metal Siding/Roofing (DR1188), (30) sheets, American made, White color, 16'-4" long X 36" overlap coverage, Premium Pro Rib Profile style, 29 gauge. ALWAYS stored inside. Meets all USA building material engineering codes for Tested Tolerances for wind & snow. USA stamped seal of approval documentation on all products. Notes: Loadout IS available with flexible appointments. Can also offer hardware, trim, corners at wholesale prices. Item Location: Monroe, NE 68647 Equipment Sold "AS IS, WHERE IS": All equipment/property is sold "AS IS, WHERE IS" with no warranty or guarantees, expressed or implied, No operational assessments have been made by DPA Auctions on this item, it has been photographed ONLY.



#150 - Metal Siding/Roofing (DR1189)

Metal Siding/Roofing (DR1189), (30) sheets, American made, White color, 18'-4" long X 36" overlap coverage, Premium Pro Rib Profile style, 29 gauge. ALWAYS stored inside. Meets all USA building material engineering codes for Tested Tolerances for wind & snow. USA stamped seal of approval documentation on all products. Notes: Loadout IS available with flexible appointments. Can also offer hardware, trim, corners at wholesale prices. Item Location: Monroe, NE 68647 Equipment Sold "AS IS, WHERE IS": All equipment/property is sold "AS IS, WHERE IS" with no warranty or guarantees, expressed or implied, No operational assessments have been made by DPA Auctions on this item, it has been photographed ONLY.



#151 - Metal Siding/Roofing (DR1190)

Metal Siding/Roofing (DR1190), (30) sheets, American made, White color, 18'-4" long X 36" overlap coverage, Premium Pro Rib Profile style, 29 gauge. ALWAYS stored inside. Meets all USA building material engineering codes for Tested Tolerances for wind & snow. USA stamped seal of approval documentation on all products. Notes: Loadout IS available with flexible appointments. Can also offer hardware, trim, corners at wholesale prices. Item Location: Monroe, NE 68647 Equipment Sold "AS IS, WHERE IS": All equipment/property is sold "AS IS, WHERE IS" with no warranty or guarantees, expressed or implied, No operational assessments have been made by DPA Auctions on this item, it has been photographed ONLY.

