

Auction catalog

Title	Online Auction - January 22, 2019 10AM Central
Description	The following line of Fertilizer, Farm Implement, Truck, Trailer & Construction Equipment will be sold online with the bidding ending on January 22, 2019. Location of the equipment is given. Bidding within the last minute before the closing of a lot will extend the bidding time by an additional minute. Be prepared to bid accordingly. For more information, contact Del Peterson & Associates: 419 West Judy Drive Fremont NE, 68025 Phone: 800-492-9090 or 402-721-4388 Fax: 402-721-4583 E-mail: auction@delpeterson.com
Date	Tue, Jan 22, 2019
Starts at	10:00 AM
Address	PO Box 654, Fremont, NE 68026 USA
Categories	

#1 - Tires (CP690)

Tires (CP690), (6) BF Goodrich 11R22.5 tires. Notes: Item Location: Pawnee City, NE 68420 Equipment Sold "AS IS, WHERE IS": All equipment/property is sold "AS IS, WHERE IS" with no warranty or guarantees, expressed or implied, No operational assessments have been made by DPA Auctions on this item, it has been photographed ONLY.



#2 - Fuel Tank (CP689)

Fuel Tank (CP689), pickup fuel tank. Notes: Item Location: Pawnee City, NE 68420 Equipment Sold "AS IS, WHERE IS": All equipment/property is sold "AS IS, WHERE IS" with no warranty or guarantees, expressed or implied, No operational assessments have been made by DPA Auctions on this item, it has been photographed ONLY.



#3 - Flotation Tires (PZ0998)

Flotation Tires (PZ0998), 2 - 16.5L-16.1SL flotation tires, rims. Notes: Item Location: Millersburg, IA 52308 Equipment Sold "AS IS, WHERE IS": All equipment/property is sold "AS IS, WHERE IS" with no warranty or guarantees, expressed or implied, No operational assessments have been made by DPA Auctions on this item, it has been photographed ONLY.



#4 - Receiver Hitches (PZ0997)

Receiver Hitches (PZ0997), 2 - New receiver hitches, came off 2018 GMC pickups. Notes: Item Location: Millersburg, IA 52308 Equipment Sold "AS IS, WHERE IS": All equipment/property is sold "AS IS, WHERE IS" with no warranty or guarantees, expressed or implied, No operational assessments have been made by DPA Auctions on this item, it has been photographed ONLY.



#5 - Misc. Electric Tools (TH398)

Misc. Electric Tools (TH398), metal stud punch, wire cutters, wire strippers, conduit cutters. Notes: Item Location: Coon Rapids, IA 50058 Equipment Sold "AS IS, WHERE IS": All equipment/property is sold "AS IS, WHERE IS" with no warranty or guarantees, expressed or implied, No operational assessments have been made by DPA Auctions on this item, it has been photographed ONLY.



#6 - Weather Proof Electric Box (TH395)

Weather Proof Electric Box (TH395), 22"x22"x8", contacts and start/stop buttons. Notes: Item Location: Coon Rapids, IA 50058 Equipment Sold "AS IS, WHERE IS": All equipment/property is sold "AS IS, WHERE IS" with no warranty or guarantees, expressed or implied, No operational assessments have been made by DPA Auctions on this item, it has been photographed ONLY.



#7 - Weather Proof Electric Box (TH396)

Weather Proof Electric Box (TH396), 22"x22"x8", contacts and start/stop buttons. Notes: Item Location: Coon Rapids, IA 50058 Equipment Sold "AS IS, WHERE IS": All equipment/property is sold "AS IS, WHERE IS" with no warranty or guarantees, expressed or implied, No operational assessments have been made by DPA Auctions on this item, it has been photographed ONLY.



#8 - Weather Proof Electric Box With Lock (TH397)

Weather Proof Electric Box With Lock (TH397), 22" x 22" x 8", contacts start/stop buttons. Notes: Item Location: Coon Rapids, IA 50058 Equipment Sold "AS IS, WHERE IS": All equipment/property is sold "AS IS, WHERE IS" with no warranty or guarantees, expressed or implied, No operational assessments have been made by DPA Auctions on this item, it has been photographed ONLY.



#9 - 1 Box Of Contacts And 1 Box Of Relays (TH399)

1 Box Of Contacts And 1 Box Of Relays (TH399). Notes: Item Location: Coon Rapids, IA 50058 Equipment Sold "AS IS, WHERE IS": All equipment/property is sold "AS IS, WHERE IS" with no warranty or guarantees, expressed or implied, No operational assessments have been made by DPA Auctions on this item, it has been photographed ONLY.



#10 - 2 Vinyl Seats (TH393)

2 Vinyl Seats (TH393), universal mounts, like new condition. Notes: Item Location: Coon Rapids, IA 50058 Equipment Sold "AS IS, WHERE IS": All equipment/property is sold "AS IS, WHERE IS" with no warranty or guarantees, expressed or implied, No operational assessments have been made by DPA Auctions on this item, it has been photographed ONLY.



#11 - Highway Traffic Cones (TH394)

Highway Traffic Cones (TH394), approximately 65 traffic cones. Notes: Item Location: Coon Rapids, IA 50058 Equipment Sold "AS IS, WHERE IS": All equipment/property is sold "AS IS, WHERE IS" with no warranty or guarantees, expressed or implied, No operational assessments have been made by DPA Auctions on this item, it has been photographed ONLY.



#12 - Westinghouse Welder (PZ1140)

Westinghouse Welder (PZ1140), Westinghouse welder. Notes: Item Location: Hopkinton, IA 52237 Equipment Sold "AS IS, WHERE IS": All equipment/property is sold "AS IS, WHERE IS" with no warranty or guarantees, expressed or implied, No operational assessments have been made by DPA Auctions on this item, it has been photographed ONLY.



#13 - 1998 John Deere Soilfinisher (PZ0951)

1998 John Deere Soilfinisher (PZ0951), 1998 John Deere 24' soil finisher, 2010 - rebuilt disk gang, 2011 - repacked all wheel bearings, 2015 - replaced or rebuilt all wheel lift cylinders, 2016 - rebuilt harrow. Notes: Always kept in shed. Item Location: Muscatine, IA 52761 Equipment Sold "AS IS, WHERE IS": All equipment/property is sold "AS IS, WHERE IS" with no warranty or guarantees, expressed or implied, No operational assessments have been made by DPA Auctions on this item, it has been photographed ONLY.



#14 - NH3 Nurse Tank (PZ0942, Unit 20)

NH3 Nurse Tank (PZ0942, Unit 20), 1000 gallon NH3 nurse tank, top front fill, autosteer gear, 12.5L-15 flotation tires, data plate. Notes: Item Location: Stanford, IL 61774 Equipment Sold "AS IS, WHERE IS": All equipment/property is sold "AS IS, WHERE IS" with no warranty or guarantees, expressed or implied, No operational assessments have been made by DPA Auctions on this item, it has been photographed ONLY.



#15 - NH3 Nurse Tank (PZ0943, Unit 9)

NH3 Nurse Tank (PZ0943, Unit 9), 1000 gallon NH3 nurse tank, top fron fill, autosteer gear, 11L-15 flotation tires, data plate. Notes: Item Location: Stanford, IL 61774 Equipment Sold "AS IS, WHERE IS": All equipment/property is sold "AS IS, WHERE IS" with no warranty or guarantees, expressed or implied, No operational assessments have been made by DPA Auctions on this item, it has been photographed ONLY.



#16 - NH3 Nurse Tank (PZ0944, Unit 14)

NH3 Nurse Tank (PZ0944, Unit 14), 1000 gallon NH3 nurse tank, top fron fill, autosteer gear, poly water tank, 11L-15 flotation tires, data plate. Notes: Item Location: Stanford, IL 61774 Equipment Sold "AS IS, WHERE IS": All equipment/property is sold "AS IS, WHERE IS" with no warranty or guarantees, expressed or implied, No operational assessments have been made by DPA Auctions on this item, it has been photographed ONLY.



#17 - NH3 Nurse Tank (PZ0945, Unit 26)

NH3 Nurse Tank (PZ0945, Unit 26), 1000 gallon NH3 nurse tank, top fron fill, autosteer gear, poly water tank, 12.5L-15 flotation tires, data plate. Notes: Item Location: Stanford, IL 61774 Equipment Sold "AS IS, WHERE IS": All equipment/property is sold "AS IS, WHERE IS" with no warranty or guarantees, expressed or implied, No operational assessments have been made by DPA Auctions on this item, it has been photographed ONLY.



#18 - NH3 Nurse Tank (PZ0946, Unit 23)

NH3 Nurse Tank (PZ0946, Unit 23), 1000 gallon NH3 nurse tank, top fron fill, autosteer gear, 11L-15 flotation tires. Notes: Item Location: Stanford, IL 61774 Equipment Sold "AS IS, WHERE IS": All equipment/property is sold "AS IS, WHERE IS" with no warranty or guarantees, expressed or implied, No operational assessments have been made by DPA Auctions on this item, it has been photographed ONLY.



#19 - Progressive 6200 NH3/Liquid Striptill Applicator (PZ0950)

Progressive 6200 NH3/Liquid Striptill Applicator (PZ0950), Progressive 6200 16 knife NH3/liquid striptill applicator, coutlers, double disc sealers, Raven Super cooler, front fold markers, 1000 gallon poly liquid tank, flotation tires. Notes: Item Location: Stanford, IL 61774 Equipment Sold "AS IS, WHERE IS": All equipment/property is sold "AS IS, WHERE IS" with no warranty or guarantees, expressed or implied, No operational assessments have been made by DPA Auctions on this item, it has been photographed ONLY.



#20 - 1975 Peterbilt 359-A (ED804)

1975 Peterbilt 359-A (ED804), big Cam Cummins engine, SQHD 38,000 rear end, 13 speed transmission, air ride suspension, good brakes/self adjusting, new tires unit has a weak starter, shows 681,423 miles. Notes: Item Location: Troy, KS 66087 Equipment Sold "AS IS, WHERE IS": All equipment/property is sold "AS IS, WHERE IS" with no warranty or guarantees, expressed or implied, No operational assessments have been made by DPA Auctions on this item, it has been photographed ONLY.



#21 - 2015 John Deere 670 Disk (KMK725)

2015 John Deere 670 Disk (KMK725), 24" serrated front blade, 25" rear blade, 9 inch spacing, hitch leveling, floating hitch, 11L- 15SL tires. Notes: Item Location: Sutherland, NE 69165 Equipment Sold "AS IS, WHERE IS": All equipment/property is sold "AS IS, WHERE IS" with no warranty or guarantees, expressed or implied, No operational assessments have been made by DPA Auctions on this item, it has been photographed ONLY.



#22 - Two (2) 300 Gallon Saddle Tanks (KMK724)

Two (2) 300 Gallon Saddle Tanks (KMK724), Agri Products, two (2) 300 gallon poly saddle tanks, mounting brackets included, came off John Deere 6170 tractor, only used 1 time, original owner. Notes: Pump pictured is not included in this lot. Always stored inside when not in use. Item Location: Sutherland, NE 69165 Equipment Sold "AS IS, WHERE IS": All equipment/property is sold "AS IS, WHERE IS" with no warranty or guarantees, expressed or implied, No operational assessments have been made by DPA Auctions on this item, it has been photographed ONLY.



#23 - 2011 Spra-Coupe 4460 Sprayer (TR7002)

2011 Spra-Coupe 4460 Sprayer (TR7002), diesel engine, hydrostat transmission, heat, air conditioning, Am/Fm CD radio, 400 gallon liquid system, 90' boom, 3-way nozzle bodies, foam marker, foam marker tank, 320/85R24 front tires, 380/85R24 rear tires, Raven Envizio, Raven SCS460 controller, shows 2,198 hours. Notes: Item Location: Leona, KS 66532 Equipment Sold "AS IS, WHERE IS": All equipment/property is sold "AS IS, WHERE IS" with no warranty or guarantees, expressed or implied, No operational assessments have been made by DPA Auctions on this item, it has been photographed ONLY.



#24 - NH3 Nurse Tank (PZ0952, Unit 33)

NH3 Nurse Tank (PZ0952, Unit 33), 1000 gallon NH3 nurse tank, top front fill, autosteer gear, 11L-15 flotation tires, data plate. Notes: Item Location: Stanford, IL 61774 Equipment Sold "AS IS, WHERE IS": All equipment/property is sold "AS IS, WHERE IS" with no warranty or guarantees, expressed or implied, No operational assessments have been made by DPA Auctions on this item, it has been photographed ONLY.



#25 - NH3 Nurse Tank (PZ0953, Unit 21)

NH3 Nurse Tank (PZ0953, Unit 21), 1000 gallon NH3 nurse tank, top front fill, autosteer gear, 11L-15 flotation tires, data plate. Notes: Item Location: Stanford, IL 61774 Equipment Sold "AS IS, WHERE IS": All equipment/property is sold "AS IS, WHERE IS" with no warranty or guarantees, expressed or implied, No operational assessments have been made by DPA Auctions on this item, it has been photographed ONLY.



#26 - NH3 Nurse Tank (PZ0954, Unit 6)

NH3 Nurse Tank (PZ0954, Unit 6), 1000 gallon NH3 nurse tank, top front fill, autosteer gear, poly water tank, 11L-15 flotation tires, data plate. Notes: Item Location: Stanford, IL 61774 Equipment Sold "AS IS, WHERE IS": All equipment/property is sold "AS IS, WHERE IS" with no warranty or guarantees, expressed or implied, No operational assessments have been made by DPA Auctions on this item, it has been photographed ONLY.



#27 - NH3 Nurse Tank (PZ0955, Unit 37)

NH3 Nurse Tank (PZ0955, Unit 37), 1000 gallon NH3 nurse tank, top front fill, autosteer gear, 11L-15 flotation tires. Notes: Item Location: Stanford, IL 61774 Equipment Sold "AS IS, WHERE IS": All equipment/property is sold "AS IS, WHERE IS" with no warranty or guarantees, expressed or implied, No operational assessments have been made by DPA Auctions on this item, it has been photographed ONLY.



#28 - NH3 Nurse Tank (PZ0956, Unit 4)

NH3 Nurse Tank (PZ0956, Unit 4), 1000 gallon NH3 nurse tank, top front fill, autosteer gear, 11L-15 flotation tires, data plate. Notes: Item Location: Stanford, IL 61774 Equipment Sold "AS IS, WHERE IS": All equipment/property is sold "AS IS, WHERE IS" with no warranty or guarantees, expressed or implied, No operational assessments have been made by DPA Auctions on this item, it has been photographed ONLY.



#29 - NH3 Nurse Tank (PZ0957, Unit 7)

NH3 Nurse Tank (PZ0957, Unit 7), 1000 gallon NH3 nurse tank, top front fill, autosteer gear, poly water tank, 11L-15 flotation tires, data plate. Notes: Item Location: Stanford, IL 61774 Equipment Sold "AS IS, WHERE IS": All equipment/property is sold "AS IS, WHERE IS" with no warranty or guarantees, expressed or implied, No operational assessments have been made by DPA Auctions on this item, it has been photographed ONLY.



#30 - NH3 Nurse Tank (PZ0958, Unit 8)

NH3 Nurse Tank (PZ0958, Unit 8), 1000 gallon NH3 nurse tank, top front fill, data plate. Notes: Item Location: Stanford, IL 61774 Equipment Sold "AS IS, WHERE IS": All equipment/property is sold "AS IS, WHERE IS" with no warranty or guarantees, expressed or implied, No operational assessments have been made by DPA Auctions on this item, it has been photographed ONLY.



#31 - 2014 John Deere 6170R (KMK723)

2014 John Deere 6170R (KMK723), 170 hp. John Deere diesel engine, MFWD, infinitely variable transmission (IVT), independent link suspension (ILS), left hand reverser, deluxe cab, instructor seat, am/fm/cd radio, cab heat and air conditioning, lighting package, hydraulic power steering, loader package, joystick control, includes John Deere GreenStar 3 and John Deere Link receiver, 12 front weights included, 3 pt. hitch, drawbar, four (4) hydraulic outlets, 540/ 540E/ 1000 pto, fenders, 420/80 R 30 front tires, 480/80 R 46 rear dual tires, shows 1481 hours. Notes: Original owner. Complete service and maintenance records available upon request. Item Location: Sutherland, NE 69165 Equipment Sold "AS IS, WHERE IS": All equipment/property is sold "AS IS, WHERE IS" with no warranty or guarantees, expressed or implied, No operational assessments have been made by DPA Auctions on this item, it has been photographed ONLY.



#32 - DMI Tool Bar (PZ0961, Unit 6)

DMI Tool Bar (PZ0961, Unit 6), DMI 11 knife conversion tool bar, coulters, double disc sealers, Hiniker cooler, hydraulic wings, 9.5L-15 flotation tires, rear hitch. Notes: Item Location: Stanford, IL 61774 Equipment Sold "AS IS, WHERE IS": All equipment/property is sold "AS IS, WHERE IS" with no warranty or guarantees, expressed or implied, No operational assessments have been made by DPA Auctions on this item, it has been photographed ONLY.



#33 - DMI Tool Bar (PZ0963)

DMI Tool Bar (PZ0963), DMI 17 knife pull type tool bar, coutlers, double disc sealers, Blu Jet ground driven pump, hydraulic wings, flotation tires, rear hitch. Notes: Item Location: Stanford, IL 61774 Equipment Sold "AS IS, WHERE IS": All equipment/property is sold "AS IS, WHERE IS" with no warranty or guarantees, expressed or implied, No operational assessments have been made by DPA Auctions on this item, it has been photographed ONLY.



#34 - 2013 John Deere 4730 Sprayer (TR7004)

2013 John Deere 4730 Sprayer (TR7004), diesel engine, hydrostatic transmission, heat, air conditioning, Am/Fm CD radio, 800 gallon stainless steel liquid system, 90' boom, 5-way nozzle bodies, 5 section shutoffs, high volume system, stainless steel chemical inductor, 380/90R46 row crop tires, 20.8R38 flotation tires, StarFire 3000 globe, GreenStar 3, shows 3,698 hours. Notes: Item Location: Leona, KS 66532 Equipment Sold "AS IS, WHERE IS": All equipment/property is sold "AS IS, WHERE IS" with no warranty or guarantees, expressed or implied, No operational assessments have been made by DPA Auctions on this item, it has been photographed ONLY.



#35 - Willmar Dry Spreader (PZ0948, Unit 5)

Willmar Dry Spreader (PZ0948, Unit 5) Willmar 500 ton dry spreader, twin spinner, PTO, tarp, flotation tires. Notes: Item Location: Stanford, IL 61774 Equipment Sold "AS IS, WHERE IS": All equipment/property is sold "AS IS, WHERE IS" with no warranty or guarantees, expressed or implied, No operational assessments have been made by DPA Auctions on this item, it has been photographed ONLY.



#36 - Willmar Dry Spreader (PZ0949, Unit 3)

Willmar Dry Spreader (PZ0949, Unit 3) Willmar 500 ton dry spreader, twin spinner, PTO, tarp, flotation tires. Notes: Item Location: Stanford, IL 61774 Equipment Sold "AS IS, WHERE IS": All equipment/property is sold "AS IS, WHERE IS" with no warranty or guarantees, expressed or implied, No operational assessments have been made by DPA Auctions on this item, it has been photographed ONLY.



#37 - Willmar Dry Spreader (PZ0962, Unit 2)

Willmar Dry Spreader (PZ0962, Unit 2) Willmar 500 ton dry spreader, twin spinner, PTO, tarp, flotation tires. Notes: Item Location: Stanford, IL 61774 Equipment Sold "AS IS, WHERE IS": All equipment/property is sold "AS IS, WHERE IS" with no warranty or guarantees, expressed or implied, No operational assessments have been made by DPA Auctions on this item, it has been photographed ONLY.



#38 - Monsanto Shuttle Tanks (PZ0947)

Monsanto Shuttle Tanks (PZ0947), 4 - Monsanto 120 gallon poly shuttle tanks. Notes: Item Location: Stanford, IL 61774 Equipment Sold "AS IS, WHERE IS": All equipment/property is sold "AS IS, WHERE IS" with no warranty or guarantees, expressed or implied, No operational assessments have been made by DPA Auctions on this item, it has been photographed ONLY.



#39 - Monsanto Shuttle Tanks (PZ0960)

Monsanto Shuttle Tanks (PZ0960), 4 - Monsanto 250 gallon poly shuttle tanks. Notes: Item Location: Stanford, IL 61774 Equipment Sold "AS IS, WHERE IS": All equipment/property is sold "AS IS, WHERE IS" with no warranty or guarantees, expressed or implied, No operational assessments have been made by DPA Auctions on this item, it has been photographed ONLY.



#40 - Motorola Radios (PZ0959)

Motorola Radios (PZ0959), 17 - Motorola GTX business radios, microphones and brackets. Notes: Item Location: Stanford, IL 61774 Equipment Sold "AS IS, WHERE IS": All equipment/property is sold "AS IS, WHERE IS" with no warranty or guarantees, expressed or implied, No operational assessments have been made by DPA Auctions on this item, it has been photographed ONLY.



#41 - 1000 Gallon Liquid Tank (ED805)

1000 Gallon Liquid Tank (ED805), unknown condition on hydraulic pump, 123" wheel base. Notes: Item Location: Troy, KS 66087 Equipment Sold "AS IS, WHERE IS": All equipment/property is sold "AS IS, WHERE IS" with no warranty or guarantees, expressed or implied, No operational assessments have been made by DPA Auctions on this item, it has been photographed ONLY.



#42 - 2011 DUO Lift Sprayer Trailer (TR7003)

2011 DUO Lift Sprayer Trailer (TR7003), Model 14000E 5 90, tandem axle, spring suspension, pintle hitch, ST235/85R16 tires, approx. 4' ramps, approx. 175" cradle length, was used to haul Spra-Coupe, GVWR 14,000 lbs. Notes: Item Location: Leona, KS 66532 Equipment Sold "AS IS, WHERE IS": All equipment/property is sold "AS IS, WHERE IS" with no warranty or guarantees, expressed or implied, No operational assessments have been made by DPA Auctions on this item, it has been photographed ONLY.



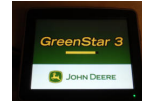
#43 - Box NH3 Parts (TR7005)

Box NH3 Parts (TR7005), box of coulters and closing wheels off of John Deere 2510H tool bar. Notes: Item Location: Leona, KS 66532 Equipment Sold "AS IS, WHERE IS": All equipment/property is sold "AS IS, WHERE IS" with no warranty or guarantees, expressed or implied, No operational assessments have been made by DPA Auctions on this item, it has been photographed ONLY.



#44 - John Deere 2630 (GS3) Display & StarFire 3000 Receiver (NP7755)

John Deere 2630 (GS3) Display & StarFire 3000 Receiver (NP7755), 2630 display has Autotrac SF1 Activation along with Section Control Activation, 3000 Receiver has SF1 Accuracy. Display and Receiver were always stored inside when not being used. Notes: Item Location: Fort Dodge, IA 50501 Equipment Sold "AS IS, WHERE IS": All equipment/property is sold "AS IS, WHERE IS" with no warranty or guarantees, expressed or implied, No operational assessments have been made by DPA Auctions on this item, it has been photographed ONLY.



#45 - Hitches/Extensions (TR7006)

Hitches/Extensions (TR7006), NH3 tool bar hitches, Case and Blue Jet tool bar extensions. Notes: Item Location: Leona, KS 66532 Equipment Sold "AS IS, WHERE IS": All equipment/property is sold "AS IS, WHERE IS" with no warranty or guarantees, expressed or implied, No operational assessments have been made by DPA Auctions on this item, it has been photographed ONLY.



#46 - 2013 Doyle Rotary Blender (PZ0964)

2013 Doyle Rotary Blender (PZ0964), 2013 Doyle 13 ton stainless steel direct drive rotary blender, internal 24" mixing auger, TEFC 60 hp electric motor, soft start, Doyle 13 ton stainless steel weigh hopper with 2 vibrators, 36" stainless steel belt from hopper to blender, 36" stainless steel loadout conveyor, direct load option, remote control in loader with ground controls, Rice Lake digital readout. Notes: This blender must be removed by March 1, 2019 with NO exceptions. Dismantle, removal and transportation is at the expense, risk and liability of the buyer. Item Location: Gladstone, IL 61437 Equipment Sold "AS IS, WHERE IS": All equipment/property is sold "AS IS, WHERE IS" with no warranty or guarantees, expressed or implied, No operational assessments have been made by DPA Auctions on this item, it has been photographed ONLY.



#47 - 2014 Kraus Vertical Blender (CP670)

2014 Kraus Vertical Blender (CP670), 2014 Kraus 10 ton vertical stainless steel dry blender, 50 HP TEFC motor, 3500lb per minute intake - 3 TPM discharge, stainless steel hopper, 304 stainless steel flat top, 7-gauge 304 stainless steel support structure & enclosed legs, 40"-22" tapered vertical auger, heavy duty screen, heavy duty gear case drive (25:1 reducer), ladder, Rice Lake knife & pivot scale-single load cell, Rice Lake 420HE digital readout/2" led display, control board, Kraus 16' x 24" stainless steel loadout conveyor. Notes: This blender must be removed by March 29th, 2019 with NO exceptions. Dismantle, removal and transportation is at the expense, risk and liability of the buyer. Item Location: Ralston, IA 51459 Equipment Sold "AS IS, WHERE IS": All equipment/property is sold "AS IS, WHERE IS" with no warranty or guarantees, expressed or implied, No operational assessments have been made by DPA Auctions on this item, it has been photographed ONLY.



#48 - Doyle Under Trac Conveyor (CP671)

Doyle Under Trac Conveyor (CP671), Doyle 18" x 20' under trac conveyor, 90 TPH, 44" x 18" flared intake stainless steel hopper. Notes: Item Location: Ralston, IA 51459 Equipment Sold "AS IS, WHERE IS": All equipment/property is sold "AS IS, WHERE IS" with no warranty or guarantees, expressed or implied, No operational assessments have been made by DPA Auctions on this item, it has been photographed ONLY.



#49 - Liquid N Serve Tank (CP666)

Liquid N Serve Tank (CP666), 10,000 gallon vertical stainless steel N Serve tank, insulated blanket. Notes: Item Location: Audubon, IA 50025 Equipment Sold "AS IS, WHERE IS": All equipment/property is sold "AS IS, WHERE IS" with no warranty or guarantees, expressed or implied, No operational assessments have been made by DPA Auctions on this item, it has been photographed ONLY.



#50 - Liquid Tank (CP668, Unit 3)

Liquid Tank (CP668, Unit 3), 5,000 gallon vertical stainless steel liquid tank, stainless steel legs. Notes: Item Location: Audubon, IA 50025 Equipment Sold "AS IS, WHERE IS": All equipment/property is sold "AS IS, WHERE IS" with no warranty or guarantees, expressed or implied, No operational assessments have been made by DPA Auctions on this item, it has been photographed ONLY.



#51 - Liquid Tank (CP669, Unit 2)

Liquid Tank (CP669, Unit 2), 5,000 gallon vertical stainless steel liquid tank, stainless steel legs. Notes: Item Location: Audubon, IA 50025 Equipment Sold "AS IS, WHERE IS": All equipment/property is sold "AS IS, WHERE IS" with no warranty or guarantees, expressed or implied, No operational assessments have been made by DPA Auctions on this item, it has been photographed ONLY.



#52 - 2012 TG 8400 Dry Floater (TR7007)

2012 TG 8400 Dry Floater (TR7007), SisuTronic diesel engine, CVT transmission, heat, air conditioning, Am/Fm CD radio, AG Force FL3024 VRT dry spreader box (S/N 11312-1) w/ Tri-Force extension, 1000/50R25 rear tires, 48x31.00R20 front tires, Raven GPS, lightbar, Raven Viper Pro, shows 3,857 hours. Notes: Item Location: Leona, KS 66532 Equipment Sold "AS IS, WHERE IS": All equipment/property is sold "AS IS, WHERE IS" with no warranty or guarantees, expressed or implied, No operational assessments have been made by DPA Auctions on this item, it has been photographed ONLY.



#54 - Adams Field Loader (PZ0970)

Adams Field Loader (PZ0970), Adams stainless steel field loader, Honda electric start gas engine (New starter, needs throttle), hydraulic wheel drive, portable. Notes: Item Location: Beaman, IA 50609 Equipment Sold "AS IS, WHERE IS": All equipment/property is sold "AS IS, WHERE IS" with no warranty or guarantees, expressed or implied, No operational assessments have been made by DPA Auctions on this item, it has been photographed ONLY.



#55 - Willmar Dry Tender (PZ0973)

Willmar Dry Tender (PZ0973), Willmar Loadrunner 16 ton 2 compartment dry tender box, rear discharge auger, roll over electric tarp. Notes: Running gear NOT included. Item Location: Beaman, IA 50609 Equipment Sold "AS IS, WHERE IS": All equipment/property is sold "AS IS, WHERE IS" with no warranty or guarantees, expressed or implied, No operational assessments have been made by DPA Auctions on this item, it has been photographed ONLY.



#56 - KBH Liquid Applicator (PZ0971)

KBH Liquid Applicator (PZ0971), KBH 9 coulter liquid applicator, 750 gallon poly liquid tank, 38" wide row, ground drive pump, hydraulic wings, flotation tires. Notes: Item Location: Beaman, IA 50609 Equipment Sold "AS IS, WHERE IS": All equipment/property is sold "AS IS, WHERE IS" with no warranty or guarantees, expressed or implied, No operational assessments have been made by DPA Auctions on this item, it has been photographed ONLY.



#57 - Raven Injection Tanks (PZ0975)

Raven Injection Tanks (PZ0975), 2 - 40 gallon poly Raven injection tanks, came off 2010 CaseIH 4420. Notes: Item Location: Beaman, IA 50609 Equipment Sold "AS IS, WHERE IS": All equipment/property is sold "AS IS, WHERE IS" with no warranty or guarantees, expressed or implied, No operational assessments have been made by DPA Auctions on this item, it has been photographed ONLY.



#58 - 2014 RoGator RG700 Sprayer (NP7732)

2014 RoGator RG700 Sprayer (NP7732), AGCO Power AP49-4i diesel engine, hydrostatic transmission, heat, air conditioning, Am/Fm radio, 700 gallon poly liquid system, 90' boom, 3-way nozzle bodies, rinse tank, auto steer, 380/80R42 tires, fronts 25%, rears 45%, Voyager backup camera, Raven GPS, Raven Viper Pro, shows 1,477 hours. Notes: Item Location: Hughesville, MO 65334 Equipment Sold "AS IS, WHERE IS": All equipment/property is sold "AS IS, WHERE IS" with no warranty or guarantees, expressed or implied, No operational assessments have been made by DPA Auctions on this item, it has been photographed ONLY.



#59 - New Leader Insert (TR7000)

New Leader Insert (TR7000), Model L4000 multiplier insert. Notes: Item Location: Wathena, KS 66090 Equipment Sold "AS IS, WHERE IS": All equipment/property is sold "AS IS, WHERE IS" with no warranty or guarantees, expressed or implied, No operational assessments have been made by DPA Auctions on this item, it has been photographed ONLY.



#60 - NH3 Tank (NP7680, Unit 92625)

NH3 Tank (NP7680, Unit 92625), 1972 Quality Steel Corporation, 1,000 gallon capacity, top front fill, 4 wheel running gear, 11L-15 flotation tires, NTIP No. 118224, data plate, Tank #380. Notes: Item Location: Mahaska, KS 66955 Equipment Sold "AS IS, WHERE IS": All equipment/property is sold "AS IS, WHERE IS" with no warranty or guarantees, expressed or implied, No operational assessments have been made by DPA Auctions on this item, it has been photographed ONLY.



#61 - NH3 Tank (NP7681, Unit 92201)

NH3 Tank (NP7681, Unit 92201), 1968 Trinity Steel Co, 1,000 gallon capacity, top front fill, 4 wheel running gear, 11L-15 flotation tires, NTIP No. 118226, data plate, Tank #209. Notes: Item Location: Mahaska, KS 66955 Equipment Sold "AS IS, WHERE IS": All equipment/property is sold "AS IS, WHERE IS" with no warranty or guarantees, expressed or implied, No operational assessments have been made by DPA Auctions on this item, it has been photographed ONLY.



#62 - NH3 Tank (NP7682, Unit 92209)

NH3 Tank (NP7682, Unit 92209), 1,000 gallon capacity, top front fill, Pryor style gear, 11L-15 flotation tires, NTIP No. 118243, data plate, Tank #726. Notes: Item Location: Mahaska, KS 66955 Equipment Sold "AS IS, WHERE IS": All equipment/property is sold "AS IS, WHERE IS" with no warranty or guarantees, expressed or implied, No operational assessments have been made by DPA Auctions on this item, it has been photographed ONLY.



#63 - NH3 Tank (NP7683, Unit 92216)

NH3 Tank (NP7683, Unit 92216), 1980 Chemi-Trol Chemical Company, 1,450 gallon capacity, top front fill, Pryor style gear, LT245/75R16 tires, NTIP No. 120144, data plate, Tank #602. Notes: Item Location: Mahaska, KS 66955 Equipment Sold "AS IS, WHERE IS": All equipment/property is sold "AS IS, WHERE IS" with no warranty or guarantees, expressed or implied, No operational assessments have been made by DPA Auctions on this item, it has been photographed ONLY.



#64 - 2005 Kenworth W900L Day Can Truck (NP7754)

2005 Kenworth W900L Day Can Truck (NP7754), Cat C-15 diesel engine (475HP), 13 speed transmission, heat, air conditioning, Am/Fm CD radio, tandem axle, 3:36 ratio, 210" wheelbase, 5th wheel plate, dual stacks, dual fuel tanks, 22.5 tires, NEW rear virgin rubber, shows 828,612 miles. Notes: Item Location: Coal Valley, IL 61240 Equipment Sold "AS IS, WHERE IS": All equipment/property is sold "AS IS, WHERE IS" with no warranty or guarantees, expressed or implied, No operational assessments have been made by DPA Auctions on this item, it has been photographed ONLY.



#65 - Friesen 220 Bulk Seed Tender (NP7684)

Friesen 220 Bulk Seed Tender (NP7684), tandem axle, bumper hitch, 7.00R15LT tires (1 tire shredded), Honda GX160 gas motor. Notes: Item Location: Mahaska, KS 66955 Equipment Sold "AS IS, WHERE IS": All equipment/property is sold "AS IS, WHERE IS" with no warranty or guarantees, expressed or implied, No operational assessments have been made by DPA Auctions on this item, it has been photographed ONLY.



#66 - Anhydrous Storage Tank (NP7728, South Tank)

Anhydrous Storage Tank (NP7728, South Tank), tank volume gauge, water capacity 91,965 lbs, approx. 11,042 gallon capacity, no data plate. Notes: TANK ONLY. This item must be dismantled and removed by March 22, 2019, NO EXCEPTIONS. Dismantle, removal and transportation is at the expense, risk and liability of the buyer. Item Location: Miltonvale, KS 67466 Equipment Sold "AS IS, WHERE IS": All equipment/property is sold "AS IS, WHERE IS" with no warranty or guarantees, expressed or implied, No operational assessments have been made by DPA Auctions on this item, it has been photographed ONLY.



#67 - 2003 Hagie STS 10 Sprayer (NP7733)

2003 Hagie STS 10 Sprayer (NP7733), Cummins diesel engine, 3 speed hydrostatic transmission, heat, air conditioning, Am/Fm radio, 1,200 gallon stainless steel liquid system, 60/80/90' boom, 3-way nozzle bodies, 15" nozzle spacings, foam marker tank, poly rinse tank, hydraulic tread adjustment, rear boom for Fungicide application, 320/90R50 tires, ATI MC1000, shows 3,860 hours. Notes: Previous owner removed 1,000 gallon poly tank and replaced it with the 1,200 gallon stainless steel tank that is currently on the sprayer. Also have (23) Y-drop system with home made brackets for this Hagie boom that will be selling in a separate lot on this auction. Item Location: Laddonia, MO 63352 Equipment Sold "AS IS, WHERE IS": All equipment/property is sold "AS IS, WHERE IS" with no warranty or guarantees, expressed or implied, No operational assessments have been made by DPA Auctions on this item, it has been photographed ONLY.



#68 - 2004 Terra Gator 6103 Dry Floater (TR7008)

2004 Terra Gator 6103 Dry Floater (TR7008), John Deere diesel engine, Terra Shift transmission, New Leader L4000 G4 - 13 dry spreader box (S/N 134609), Multiplier ready, dual spinners, 1000/50R25 tires, Raven Viper Pro, shows 79,795 miles, shows 7,062 hours. Notes: Item Location: Wathena, KS 66090 Equipment Sold "AS IS, WHERE IS": All equipment/property is sold "AS IS, WHERE IS" with no warranty or guarantees, expressed or implied, No operational assessments have been made by DPA Auctions on this item, it has been photographed ONLY.



#69 - 1979 IHC 2155 Liquid Truck (PZ0966, Unit 5025)

1979 IHC 2155 Liquid Truck (PZ0966, Unit 5025), 3208 Cat diesel engine, automatic transmission, heat, single axle, 1600 gallon stainless steel liquid dust control tank, Raven SCS330 controller, shows 69,725 miles. Notes: Item Location: Beaman, IA 50609 Equipment Sold "AS IS, WHERE IS": All equipment/property is sold "AS IS, WHERE IS" with no warranty or guarantees, expressed or implied, No operational assessments have been made by DPA Auctions on this item, it has been photographed ONLY.



#70 - 1990 Unverferth Weigh Wagon (PZ0967)

1990 Unverferth Weigh Wagon (PZ0967), 1990 Unverferth model 150 weigh wagon, side discharge belt driven auger, electric hydraulics, Onan 16 hp electric start gas engine, J - Star model 5 digital scale, single axle. Notes: Item Location: Beaman, IA 50609 Equipment Sold "AS IS, WHERE IS": All equipment/property is sold "AS IS, WHERE IS" with no warranty or guarantees, expressed or implied, No operational assessments have been made by DPA Auctions on this item, it has been photographed ONLY.



#71 - 2015 CaseIH 4440 Hood (PZ0974)

2015 CaseIH 4440 Hood (PZ0974), 2015 CaseIH 4440 hood, excellent paint, front end damage. Notes: Item Location: Beaman, IA 50609 Equipment Sold "AS IS, WHERE IS": All equipment/property is sold "AS IS, WHERE IS" with no warranty or guarantees, expressed or implied, No operational assessments have been made by DPA Auctions on this item, it has been photographed ONLY.



#72 - USC LP 800 Seed Treater (PZ0982)

USC LP 800 Seed Treater (PZ0982), USC LP800 seed treater, seed wheel, 30 gallon stainless steel mixing tank, 5 gallon poly tank, 2 - easy-load II MasterFlex model 77200-52, Zero flow meter totalizer, calibration tube, control board, seed wheel control board. Notes: Excellent condition. Item Location: Cedar Bluffs, NE 68015 Equipment Sold "AS IS, WHERE IS": All equipment/property is sold "AS IS, WHERE IS" with no warranty or guarantees, expressed or implied, No operational assessments have been made by DPA Auctions on this item, it has been photographed ONLY.



#73 - Waconia Dry Blender (CP690)

Waconia Dry Blender (CP690), Waconia 10 ton stainless steel vertical blender, stainless steel hopper, Waconia stainless steel loadout conveyor. Notes: This blender must be removed by March 29th, 2019 with NO exceptions. Dismantle, removal and transportation is at the expense, risk and liability of the buyer. Item Location: Woodward, IA 50276 Equipment Sold "AS IS, WHERE IS": All equipment/property is sold "AS IS, WHERE IS" with no warranty or guarantees, expressed or implied, No operational assessments have been made by DPA Auctions on this item, it has been photographed ONLY.



#74 - 2002 IHC 5600 (DR1038 Unit FR15001)

2002 IHC 5600 (DR1038 Unit FR15001), cab/chassis unit, Cat diesel engine, 8 speed lo/lo transmission, day cab, air lift tag axle, 20,000 lb front axle, 19' frame rail behind the cab, PTO, AM/FM cassette radio, air conditioning, cruise control, 425/65R22.5 tires, 22.5 drive tires, all aluminum wheels, shows 478,195 miles. Notes: Item Location: Arlington, WI 53911 Equipment Sold "AS IS, WHERE IS": All equipment/property is sold "AS IS, WHERE IS" with no warranty or guarantees, expressed or implied, No operational assessments have been made by DPA Auctions on this item, it has been photographed ONLY.



#75 - 2001 Freightliner FL106 (DR1041 Unit 2635)

2001 Freightliner FL106 (DR1041 Unit 2635), Detroit diesel engine, Allison automatic transmission, single axle, cab/chassis, 15.5' of frame rail behind the cab, air brakes, AM/FM CD radio, air conditioning, cruise control, 22.5 tires, all aluminum wheels, shows 133,964 miles. Notes: Item Location: Oconomowoc, WI 53066 Equipment Sold "AS IS, WHERE IS": All equipment/property is sold "AS IS, WHERE IS" with no warranty or guarantees, expressed or implied, No operational assessments have been made by DPA Auctions on this item, it has been photographed ONLY.



#76 - 2001 Chevy C7500 (DR1042 Unit 2803)

2001 Chevy C7500 (DR1042 Unit 2803), Cat diesel engine, automatic transmission, single axle, cab/chassis, 17' of frame rail behind the cab, air brakes, AM/FM radio, air conditioning, cruise control, 22.5 tires, shows 193,299 miles. Notes: Item Location: Oconomowoc, WI 53066 Equipment Sold "AS IS, WHERE IS": All equipment/property is sold "AS IS, WHERE IS" with no warranty or guarantees, expressed or implied, No operational assessments have been made by DPA Auctions on this item, it has been photographed ONLY.



#77 - Reiter Aluminum Dump Box (DR1040)

Reiter Aluminum Dump Box (DR1040), 16' aluminum dump box, rear swing tailgate, hydraulic cylinder, side extensions. Notes: Reservoir, hinge plate and hydraulic pump ARE included, just not pictured. Item Location: Arlington, WI 53911 Equipment Sold "AS IS, WHERE IS": All equipment/property is sold "AS IS, WHERE IS" with no warranty or guarantees, expressed or implied, No operational assessments have been made by DPA Auctions on this item, it has been photographed ONLY.



#78 - 1994 Freightliner (DR1036 Unit 843)

1994 Freightliner (DR1036 Unit 843), Cummins diesel engine, 10 speed transmission, tandem axle full screw, air ride suspension, Tyler 2 compartment hydraulic stainless steel dry fertilizer tender box, side shooter auger, roll tarp, AM/FM radio, air conditioning, 24.5 tires, all aluminum wheels, shows 287,477 miles. Notes: All service records are available. Has NEW lower auger & good tarp. Item Location: Spring Green, WI 53588 Equipment Sold "AS IS, WHERE IS": All equipment/property is sold "AS IS, WHERE IS" with no warranty or guarantees, expressed or implied, No operational assessments have been made by DPA Auctions on this item, it has been photographed ONLY.



#79 - 2004 Kenworth T300 (DR1044 Unit 2118)

2004 Kenworth T300 (DR1044 Unit 2118), Cat diesel engine, 6 speed transmission, single axle, air tag axle, Boston Steel 2700 gallon 5 compartment aluminum fuel transport body, dual metered hose reels, air brakes, air conditioning, cruise control, 22.5 tires, shows 259,009 miles. Notes: Item Location: Jefferson, WI 53549 Equipment Sold "AS IS, WHERE IS": All equipment/property is sold "AS IS, WHERE IS" with no warranty or guarantees, expressed or implied, No operational assessments have been made by DPA Auctions on this item, it has been photographed ONLY.



#80 - 1990 International (DR1046 Unit 586)

1990 International (DR1046 Unit 586), DT466 diesel engine, 6 speed transmission, single axle, 2200 gallon 5 compartment fuel body, dual metered hose reels, air brakes, AM/FM cassette radio, 22.5 tires, shows 38,006 miles. Notes: Item Location: Jefferson, WI 53549 Equipment Sold "AS IS, WHERE IS": All equipment/property is sold "AS IS, WHERE IS" with no warranty or guarantees, expressed or implied, No operational assessments have been made by DPA Auctions on this item, it has been photographed ONLY.



#81 - 2013 Ford F150 (DR1045 Unit 40581)

2013 Ford F150 (DR1045 Unit 40581), 3.5 liter gas engine, automatic transmission, quad cab, 4X4, spray bed liner, rear receiver hitch, bed mounted tool box, power windows & locks, AM/FM CD radio, heat/air conditioning, cruise control, 265/70R17 tires, shows 201,191 miles. Notes: Item Location: Jefferson, WI 53549 Equipment Sold "AS IS, WHERE IS": All equipment/property is sold "AS IS, WHERE IS" with no warranty or guarantees, expressed or implied, No operational assessments have been made by DPA Auctions on this item, it has been photographed ONLY.



#82 - 2003 GMC 2500HD (DR1047 Unit FR13155)

2003 GMC 2500HD (DR1047 Unit FR13155), 6.0 liter gas engine, automatic transmission, 4X4, regular cab, rear ag bumper, AM/FM radio, air conditioning, rear back up alarm, 265/75R16 tires, shows 125,582 miles. Notes: Has NO tailgate. Item Location: Darlington, WI 53530 Equipment Sold "AS IS, WHERE IS": All equipment/property is sold "AS IS, WHERE IS" with no warranty or guarantees, expressed or implied, No operational assessments have been made by DPA Auctions on this item, it has been photographed ONLY.



#83 - KSI Seed Conveyor (PZ0983)

KSI Seed Conveyor (PZ0983), KSI model 1208-17 seed conveyor, electric motor, hopper, portable, 175/70R13 tires. Notes: Item Location: Cedar Bluffs, NE 68015 Equipment Sold "AS IS, WHERE IS": All equipment/property is sold "AS IS, WHERE IS" with no warranty or guarantees, expressed or implied, No operational assessments have been made by DPA Auctions on this item, it has been photographed ONLY.



#84 - 2014 RoGator RG700 Sprayer (TR7001)

2014 RoGator RG700 Sprayer (TR7001), diesel engine, hydrostatic transmission, heat, air conditioning, Am/Fm CD radio, 700 gallon poly liquid system, 90' boom, 3-way nozzle bodies, poly chemical inductor, 380/80R42 tires, lightbar, Raven Viper Pro, shows 1,323 hours. Notes: Flotation tires for this machine will be selling separately on this auction. Item Location: Wathena, KS 66090 Equipment Sold "AS IS, WHERE IS": All equipment/property is sold "AS IS, WHERE IS" with no warranty or guarantees, expressed or implied, No operational assessments have been made by DPA Auctions on this item, it has been photographed ONLY.



#85 - NH3 Nurse Tanks (PZ0986)

NH3 Nurse Tanks (PZ0986), 5 - 1000 gallon NH3 nurse tanks, did not pass inspection. Notes: Item Location: Beaman, IA 50609 Equipment Sold "AS IS, WHERE IS": All equipment/property is sold "AS IS, WHERE IS" with no warranty or guarantees, expressed or implied, No operational assessments have been made by DPA Auctions on this item, it has been photographed ONLY.



#86 - Case iH Single Disc Coulters Fertilizer (LD109)

Case iH Single Disc Coulters Fertilizer (LD109), (12) twelve coulters that were mounted in a Case iH 1240 pivot planter. Notes: Item Location: Dayton, MN 55327 Equipment Sold "AS IS, WHERE IS": All equipment/property is sold "AS IS, WHERE IS" with no warranty or guarantees, expressed or implied, No operational assessments have been made by DPA Auctions on this item, it has been photographed ONLY.



#87 - 60' Side Dress Toolbar (LD108)

60' Side Dress Toolbar (LD108) 12 Knife, 60' 3pt mounted side dress toolbar with fertilizer coulters at 60" spacing, toolbar is shop built and green in color, double fold, (2) two outer tires are 14", (2) two inner tires are 9.5/15 with 3-point bar. Notes: Item Location: Dayton, MN 55327 Equipment Sold "AS IS, WHERE IS": All equipment/property is sold "AS IS, WHERE IS" with no warranty or guarantees, expressed or implied, No operational assessments have been made by DPA Auctions on this item, it has been photographed ONLY.



#88 - Kewanee 1025 Disk (PD1162)

Kewanee 1025 Disk (PD1162), 25 Foot, always shedded. Notes: Item Location: Madison, NE 68748 Equipment Sold "AS IS, WHERE IS": All equipment/property is sold "AS IS, WHERE IS" with no warranty or guarantees, expressed or implied, No operational assessments have been made by DPA Auctions on this item, it has been photographed ONLY.



#89 - 1979 42 Foot Flat Bed Trailer W/ 2 Poly Tanks (PD1161)

1979 42 Foot Flat Bed Trailer W/ 2 Poly Tanks (PD1161), Poly tanks are 2000 gallons and 1500 gallons, inductor, 5.5 hp Briggs pump, 2 inch plumbing, real good shape. Notes: Item Location: Madison, NE 68748 Equipment Sold "AS IS, WHERE IS": All equipment/property is sold "AS IS, WHERE IS" with no warranty or guarantees, expressed or implied, No operational assessments have been made by DPA Auctions on this item, it has been photographed ONLY.



#90 - Liquid Nurse Trailer (DL419)

Liquid Nurse Trailer (DL419), 1000 gallon crown poly liquid tank, Briggs and Stratton motor, Flomax pump, tandem axle gear, 11L-15 tires. Notes: Item Location: Goodhue, MN 55027 Equipment Sold "AS IS, WHERE IS": All equipment/property is sold "AS IS, WHERE IS" with no warranty or guarantees, expressed or implied, No operational assessments have been made by DPA Auctions on this item, it has been photographed ONLY.



#91 - Case 560 Trencher (AL573)

Case 560 Trencher (AL573), 3' 6" digging depth, 4" width, backhoe attachment and cable plow attachment included. Notes: Item Location: Albia, IA 52531 Equipment Sold "AS IS, WHERE IS": All equipment/property is sold "AS IS, WHERE IS" with no warranty or guarantees, expressed or implied, No operational assessments have been made by DPA Auctions on this item, it has been photographed ONLY.



#92 - Nightwine 3 Way 3" Ball Valve (DL407)

Nightwine 3 Way 3" Ball Valve (DL407), 3-way 3" air actuated flanged ball valves for use in mixing plant, change flow between tanks and/or fill stations, spring return actuator mounted to 3 inch 30C Series 150# flanged carbon steel 3-way, T-port valve with RTFE seats, Triac air actuators for opening and closing valves, allows flow in one line that can be changed to flow to 2 different lines outgoing one at a time, Model# 30CF13002R9SXXT (PA). Notes: Item Location: Biglerville, PA 17307 Equipment Sold "AS IS, WHERE IS": All equipment/property is sold "AS IS, WHERE IS" with no warranty or guarantees, expressed or implied, No operational assessments have been made by DPA Auctions on this item, it has been photographed ONLY.



#93 - Rafters (CP679)

Rafters (CP679), (6) 30' wide rafters. Notes: Item Location: Pawnee City, NE 68420 Equipment Sold "AS IS, WHERE IS": All equipment/property is sold "AS IS, WHERE IS" with no warranty or guarantees, expressed or implied, No operational assessments have been made by DPA Auctions on this item, it has been photographed ONLY.



#94 - International 950 (CP687)

International 950 (CP687), 12 row 30" planter, NEW furrow openers, NEW covering discs, hydraulic markers, PTO hydraulic pump, International row monitor. Notes: Item Location: Pawnee City, NE 68420 Equipment Sold "AS IS, WHERE IS": All equipment/property is sold "AS IS, WHERE IS" with no warranty or guarantees, expressed or implied, No operational assessments have been made by DPA Auctions on this item, it has been photographed ONLY.



#95 - Allied Genetics Soybean Seed (CP688)

Allied Genetics Soybean Seed (CP688) 27 bags of Dura Crop bean seed, group number 4266RR2Y. Notes: Item Location: Pawnee City, NE 68420 Equipment Sold "AS IS, WHERE IS": All equipment/property is sold "AS IS, WHERE IS" with no warranty or guarantees, expressed or implied, No operational assessments have been made by DPA Auctions on this item, it has been photographed ONLY.



#96 - KSI Seed Conveyor (PZ0985)

KSI Seed Conveyor (PZ0985), KSI model 1208-25 seed conveyor, electric motor, long electric cord, hopper, portable, ST175/80R13 tires. Notes: Item Location: Cedar Bluffs, NE 68015 Equipment Sold "AS IS, WHERE IS": All equipment/property is sold "AS IS, WHERE IS" with no warranty or guarantees, expressed or implied, No operational assessments have been made by DPA Auctions on this item, it has been photographed ONLY.



#97 - Anhydrous Storage Tank (NP7729, Middle Tank)

Anhydrous Storage Tank (NP7729, Middle Tank), tank volume gauge, water capacity 92,369 lbs, no data plate. Notes: TANK ONLY. This item must be dismantled and removed by March 22, 2019, NO EXCEPTIONS. Dismantle, removal and transportation is at the expense, risk and liability of the buyer. Item Location: Miltonvale, KS 67466 Equipment Sold "AS IS, WHERE IS": All equipment/property is sold "AS IS, WHERE IS" with no warranty or guarantees, expressed or implied, No operational assessments have been made by DPA Auctions on this item, it has been photographed ONLY.



#98 - 2008 AGCO Hesston 5556A Baler (CP678)

2008 AGCO Hesston 5556A Baler (CP678), Auto-Cycle, self contained hydraulic pump, 14L-16.1SL tires, 200 bales in 2018, approx. 6,800 bales in its lifetime, replaced a couple roller bearings, will come with (2) extra roller bearings, shedded its whole life except the last 6 months, comes with gta monitor. Notes: Item Location: Sabetha, KS 66534 Equipment Sold "AS IS, WHERE IS": All equipment/property is sold "AS IS, WHERE IS" with no warranty or guarantees, expressed or implied, No operational assessments have been made by DPA Auctions on this item, it has been photographed ONLY.



#99 - USC LPX2000 Seed Treater (PZ0981)

USC LPX2000 Seed Treater (PZ0981), USC LPX2000 seed treater (S/N 11368), w/ box stand, dry applicator, seed wheel, digital displays, stainless steel slurry tank and pump, innoculant poly tank and pump, treated less than 60,000 units, excellent condition. Conveyor in picture is NOT included. Notes: Conveyor in picture is NOT included. Item Location: Rensselaer, IN 47978 Equipment Sold "AS IS, WHERE IS": All equipment/property is sold "AS IS, WHERE IS" with no warranty or guarantees, expressed or implied, No operational assessments have been made by DPA Auctions on this item, it has been photographed ONLY.



#100 - (4) Continental Flotation Tires/Rims (TR7030)

(4) Continental Flotation Tires/Rims (TR7030), Model SVT, size 600/70R30, 10 bolt rim pattern, deep tread. Notes: Came off RoGator RG700 sprayer that will be selling separate on this auction. Item Location: Wathena, KS 66090 Equipment Sold "AS IS, WHERE IS": All equipment/property is sold "AS IS, WHERE IS" with no warranty or guarantees, expressed or implied, No operational assessments have been made by DPA Auctions on this item, it has been photographed ONLY.



#101 - 2012 John Deere Ag Leader 3030 G4 Bed (ED830)

2012 John Deere Ag Leader 3030 G4 Bed (ED830), stainless steel bed, very little use, rate controller. Notes: Item Location: Bowen, IL 62316 Equipment Sold "AS IS, WHERE IS": All equipment/property is sold "AS IS, WHERE IS" with no warranty or guarantees, expressed or implied, No operational assessments have been made by DPA Auctions on this item, it has been photographed ONLY.



#102 - 2006 Ford F350 Super Duty (ED806)

2006 Ford F350 Super Duty (ED806), 6.0 diesel engine, 2 WD, automatic, manual, heat, A/C, radio, 1 ton, 235/80/17 tires with 40-50% tread, truck runs but has an oil leak and runs rough at start up, shows 170,212 mile. Notes: Item Location: Cobden, IL 62920 Equipment Sold "AS IS, WHERE IS": All equipment/property is sold "AS IS, WHERE IS" with no warranty or guarantees, expressed or implied, No operational assessments have been made by DPA Auctions on this item, it has been photographed ONLY.



#103 - 2008 Komatsu Forklift (NP7735)

2008 Komatsu Forklift (NP7735), 5,000 pound capacity, pneumatic tires, indoor/outdoor unit, triple mast with side shift, comes with 42" forks, all equipment and safety's seat, backup horn and flashing light work as they should, shows 12,908 hours. Notes: LP Tank DOES NOT SELL with this forklift. Always maintained by local forklift company. Item Location: Washington Park, IL 62204 Equipment Sold "AS IS, WHERE IS": All equipment/property is sold "AS IS, WHERE IS" with no warranty or guarantees, expressed or implied, No operational assessments have been made by DPA Auctions on this item, it has been photographed ONLY.



#104 - Y-Drops (NP7734)

Y-Drops (NP7734), (23) total Y-drops, mounting brackets were made for Hagie STS 10 sprayer, may not fit all machines without some modifications, assortments of orifices. Notes: Used on Hagie STS 10 sprayer which will be selling separate on this auction. Item Location: Laddonia, MO 63352 Equipment Sold "AS IS, WHERE IS": All equipment/property is sold "AS IS, WHERE IS" with no warranty or guarantees, expressed or implied, No operational assessments have been made by DPA Auctions on this item, it has been photographed ONLY.



#105 - 2015 Massey-Ferguson 978 Loader & Bale Fork (DL429)

2015 Massey-Ferguson 978 Loader & Bale Fork (DL429), 2015 Massey-Ferguson 978 high horse power front loader & bale fork, like new, powerfully built, mechanical self-leveling, super strong delta sub-frame system, locking galvanized pics, loader arms w/ unique twin "C" channel beams, high visibility, unique features - link parallel linking & Q lock hydraulic locking system has no mounting brackets or joystick. Notes: This item was taken off of a MF-7622 tractor. Also fits other models - MF-7619, 7620, 7622, 7719, 7720, 7722. Item Location: Marceline, MO 64658 Equipment Sold "AS IS, WHERE IS": All equipment/property is sold "AS IS, WHERE IS" with no warranty or guarantees, expressed or implied, No operational assessments have been made by DPA Auctions on this item, it has been photographed ONLY.



#106 - 2014 CaseIH 400 QuadTrack (PD1180)

2014 CaseIH 400 QuadTrack (PD1180), 1495 hours, row crop tracks, 3 point hitch w/ quick hitch, luxury cab, 16 speed powershift, high capacity bar w diff lock, 4 SCV's, 1000 RPM PTO, guidance ready, single beacon, battery disconnect, hydraulic coupler spill collect, clear view caps, decelerator pedal, electrical armrest adjuster, electric adjust extendable rearview mirrors, front bumper casting, true ground speed sensor, performance monitor, front and rear HID lights, large color monitor display, HID cab roof work light package, armrest monitor mounting, cold weather starting aid, power beyond supply and return, wheel scrapers, AMFM w/CD Delphi Radio, cab suspension, ISO implement system, tow cable. Notes: Item Location: Clinton, OK 73601 Equipment Sold "AS IS, WHERE IS": All equipment/property is sold "AS IS, WHERE IS" with no warranty or guarantees, expressed or implied, No operational assessments have been made by DPA Auctions on this item, it has been photographed ONLY.



#107 - Containment Sytem (TR7013)

Containment Sytem (TR7013), The dimensions are:176"x176"x176"x42" high. Comes with the liner to go inside of it. Was new and placed into service in 2017. Notes: Item Location: Mountain, ND 58262 Equipment Sold "AS IS, WHERE IS": All equipment/property is sold "AS IS, WHERE IS" with no warranty or guarantees, expressed or implied, No operational assessments have been made by DPA Auctions on this item, it has been photographed ONLY.



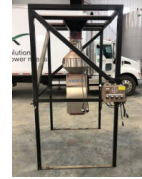
#108 - 2013 Bayer RH2000 Seed Treater (TR7010)

2013 Bayer RH2000 Seed Treater (TR7010), This was new in 2013 it is wired for 3 phase 208 power. Has manual controls that were never used, seed wheel 48" drum and skirt for the atomizer chamber for easier clean outs actually will come with 2 skirts for quick and easy changes in season. Notes: Item Location: Mountain, ND 58262 Equipment Sold "AS IS, WHERE IS": All equipment/property is sold "AS IS, WHERE IS" with no warranty or guarantees, expressed or implied, No operational assessments have been made by DPA Auctions on this item, it has been photographed ONLY.



#109 - CS1700 Seed Treater (TR7011)

CS1700 Seed Treater (TR7011), and box stand combination with Bayer controls and whisker switch for automatic control. Notes: Item Location: Mountain, ND 58262 Equipment Sold "AS IS, WHERE IS": All equipment/property is sold "AS IS, WHERE IS" with no warranty or guarantees, expressed or implied, No operational assessments have been made by DPA Auctions on this item, it has been photographed ONLY.



#110 - Air Bypass Gate (TR7012)

Air Bypass Gate (TR7012), air bypass valve. Notes: Item Location: Mountain, ND 58262 Equipment Sold "AS IS, WHERE IS": All equipment/property is sold "AS IS, WHERE IS" with no warranty or guarantees, expressed or implied, No operational assessments have been made by DPA Auctions on this item, it has been photographed ONLY.



#111 - Salford BBI Spreader Conveyor Belt (PZ1008)

Salford BBI Spreader Conveyor Belt (PZ1008), Salford BBI spreader conveyor belt, approx. 30" wide x 384" length, conveyor belt came off MagnaSpread 16' box unit, belt has approx. 300 acres of application used on it. Notes: Item Location: Hills, IA 52235 Equipment Sold "AS IS, WHERE IS": All equipment/property is sold "AS IS, WHERE IS" with no warranty or guarantees, expressed or implied, No operational assessments have been made by DPA Auctions on this item, it has been photographed ONLY.



#112 - New Rear Combine Hitch (PZ1006)

New Rear Combine Hitch (PZ1006), New rear combine hitch, pull head cart behind combine, think it fits 10 or 00 series and possibly a 60 series John Deere combine. Notes: Item Location: Vandalia, IL 62471 Equipment Sold "AS IS, WHERE IS": All equipment/property is sold "AS IS, WHERE IS" with no warranty or guarantees, expressed or implied, No operational assessments have been made by DPA Auctions on this item, it has been photographed ONLY.



#113 - Hyster Forklift (PZ0993)

Hyster Forklift (PZ0993), Hyster forklift, LP gas engine, shuttle shift transmission, canopy, 18x5x12 front tires, 14x4 1/2x8 rear tires, No LP tank. Notes: LP tank NOT included. Item Location: Grinnell, IA 50112 Equipment Sold "AS IS, WHERE IS": All equipment/property is sold "AS IS, WHERE IS" with no warranty or guarantees, expressed or implied, No operational assessments have been made by DPA Auctions on this item, it has been photographed ONLY.



#114 - Liquid Storage Tank (PZ0988)

Liquid Storage Tank (PZ0988), 20,000 gallon vertical steel liquid storage tank, has a leak. Notes: Item Location: Grinnell, IA 50112 Equipment Sold "AS IS, WHERE IS": All equipment/property is sold "AS IS, WHERE IS" with no warranty or guarantees, expressed or implied, No operational assessments have been made by DPA Auctions on this item, it has been photographed ONLY.



#115 - Raven Cables (PZ0990)

Raven Cables (PZ0990), 5 - New Raven wiring harnesses, radar. Notes: Item Location: Grinnell, IA 50112 Equipment Sold "AS IS, WHERE IS": All equipment/property is sold "AS IS, WHERE IS" with no warranty or guarantees, expressed or implied, No operational assessments have been made by DPA Auctions on this item, it has been photographed ONLY.



#116 - Friesen Seed Conveyor (PZ0991)

Friesen Seed Conveyor (PZ0991), Friesen seed conveyor, Gandy poly - ASB model 0900896 with electric motor, portable, 175/80R13 tires. Notes: Item Location: Grinnell, IA 50112 Equipment Sold "AS IS, WHERE IS": All equipment/property is sold "AS IS, WHERE IS" with no warranty or guarantees, expressed or implied, No operational assessments have been made by DPA Auctions on this item, it has been photographed ONLY.



#117 - 1999 Kenworth T800 Dry Tender Truck (PZ0992)

1999 Kenworth T800 Dry Tender Truck (PZ0992), Detroit series 60 diesel engine, 10 speed transmission, air conditioning, heat, Am/Fm CD stereo, cruise control, engine brake, tandem axle, full screw, Willmar 16 ton dry tender box (S/N W16SSVNT001004), side discharge auger, all hydraulic, roll over tarp, 11R22.5 tires, shows 600,049 miles. Notes: Small antifreeze leak. Please call seller for more information. Item Location: Grinnell, IA 50112 Equipment Sold "AS IS, WHERE IS": All equipment/property is sold "AS IS, WHERE IS" with no warranty or guarantees, expressed or implied, No operational assessments have been made by DPA Auctions on this item, it has been photographed ONLY.



#118 - Bubble Wrap (PZ0994)

Bubble Wrap (PZ0994), Spool of bubble wrap. Notes: Item Location: Grinnell, IA 50112 Equipment Sold "AS IS, WHERE IS": All equipment/property is sold "AS IS, WHERE IS" with no warranty or guarantees, expressed or implied, No operational assessments have been made by DPA Auctions on this item, it has been photographed ONLY.



#119 - Bed Slide (PZ0995)

Bed Slide (PZ0995), Bed Slide 1000 Pro SE slide out bed. Notes: Item Location: Grinnell, IA 50112 Equipment Sold "AS IS, WHERE IS": All equipment/property is sold "AS IS, WHERE IS" with no warranty or guarantees, expressed or implied, No operational assessments have been made by DPA Auctions on this item, it has been photographed ONLY.



#120 - Steel Seed Hopper (PZ0984)

Steel Seed Hopper (PZ0984), Steel Seed Hopper, steel legs, roll up/down door. Notes: Item Location: Cedar Bluffs, NE 68015 Equipment Sold "AS IS, WHERE IS": All equipment/property is sold "AS IS, WHERE IS" with no warranty or guarantees, expressed or implied, No operational assessments have been made by DPA Auctions on this item, it has been photographed ONLY.



#121 - Anhydrous Storage Tank (NP7730, North Tank)

Anhydrous Storage Tank (NP7730, North Tank), tank volume gauge, water capacity 92,444 lbs, no data plate. Notes: TANK ONLY. This item must be dismantled and removed by March 22, 2019, NO EXCEPTIONS. Dismantle, removal and transportation is at the expense, risk and liability of the buyer. Item Location: Miltonvale, KS 67466 Equipment Sold "AS IS, WHERE IS": All equipment/property is sold "AS IS, WHERE IS" with no warranty or guarantees, expressed or implied, No operational assessments have been made by DPA Auctions on this item, it has been photographed ONLY.



#122 - 2003 John Deere 1790 CCS 16/31 Row Planter (DL428)

2003 John Deere 1790 CCS 16/31 Row Planter (DL428), Central Commodity System 2 50 b.u. tanks, tri-fold markers w/ 16" notched disk, depth gauging band and control independent of planter lift, variable drive with 2 hydraulic motors w/ half-width disconnect, 2pt hitch, Ag Leader system with SeedCommand clutches on all 31 rows, Tru-Vee openers with walking gauge wheels, rubber tire closing wheels, vacuum level sensor for SeedStar monitor system, regular seed tube w/ AccuCount sensor, pneumatic down force system, steel scrapers for Tru-Vee openers (put on new last year), unit mounted coulter w/ 0.63" 25 fluted blades, 16 corn/bean plates, main frame tires 11x22.5. Notes: Machine is always shedded. Item Location: Marceline, MO 64658 Equipment Sold "AS IS, WHERE IS": All equipment/property is sold "AS IS, WHERE IS" with no warranty or guarantees, expressed or implied, No operational assessments have been made by DPA Auctions on this item, it has been photographed ONLY.



#123 - 1997 Link Belt Crane (PD1163)

1997 Link Belt Crane (PD1163), Model RTC-8022, 6160 hours, 22 ton, hydraulic system, new LSI monitor installed in 2013. Notes: Item Location: Waterloo, IA 50701 Equipment Sold "AS IS, WHERE IS": All equipment/property is sold "AS IS, WHERE IS" with no warranty or guarantees, expressed or implied, No operational assessments have been made by DPA Auctions on this item, it has been photographed ONLY.



#124 - 1997 JLG 40 Foot Lift (PD1164)

1997 JLG 40 Foot Lift (PD1164), RTS, 4x4x2, dual fuel. Notes: Item Location: Waterloo, IA 50701 Equipment Sold "AS IS, WHERE IS": All equipment/property is sold "AS IS, WHERE IS" with no warranty or guarantees, expressed or implied, No operational assessments have been made by DPA Auctions on this item, it has been photographed ONLY.



#125 - Pump & Motor (PZ01002)

Pump & Motor (PZ01002), Baldor 25 hp electric motor, MP model 3367 pump. Notes: Item Location: Dyersville, IA 52040 Equipment Sold "AS IS, WHERE IS": All equipment/property is sold "AS IS, WHERE IS" with no warranty or guarantees, expressed or implied, No operational assessments have been made by DPA Auctions on this item, it has been photographed ONLY.



#126 - Mustang 2076 Skid Steer (PZ1004, Unit 23961)

Mustang 2076 Skid Steer (PZ1004, Unit 23961), Mustang 2076 Turbo skid steer, Yanmar diesel engine, hydrostatic transmission, air conditioning, heat, cab, lights, bucket, 12-16.5 tires, shows 1178 hours. Notes: Item Location: Dyersville, IA 52040 Equipment Sold "AS IS, WHERE IS": All equipment/property is sold "AS IS, WHERE IS" with no warranty or guarantees, expressed or implied, No operational assessments have been made by DPA Auctions on this item, it has been photographed ONLY.



#127 - 2001 Mack CH613 Dry Tender Truck (PZ1001, Unit 17865)

2001 Mack CH613 Dry Tender Truck (PZ1001, Unit 17865), Mack E7-355/380 diesel engine, 10 speed transmission, air conditioning, heat, Am/Fm cassette radio, cruise control, tandem axle, full screw, air ride suspension, Tyler 16 ton dry tender box, side discharge auger, all hydraulic, roll over tarp, 315/80R22.5 front tires, 11R22.5 rear tires, rear fenders, shows 521,106 miles. Notes: PLEASE ALLOW AT LEAST 60 DAYS FOR TITLE TRANSFER. Item Location: Dyersville, IA 52040 Equipment Sold "AS IS, WHERE IS": All equipment/property is sold "AS IS, WHERE IS" with no warranty or guarantees, expressed or implied, No operational assessments have been made by DPA Auctions on this item, it has been photographed ONLY.



#128 - 2008 Chevrolet 3500HD Flatbed Pickup (PZ0999, Unit 42297)

2008 Chevrolet 3500HD Flatbed Pickup (PZ0999, Unit 42297), 4x4, dually, gas engine, automatic transmission, air conditioning, heat, Am/Fm radio, running boards, Avalon aluminum flatbed, headache rack, 5th wheel ball, ag hitch, LT225/75R17 tires, shows 113,250 miles. Notes: PLEASE ALLOW AT LEAST 60 DAYS FOR TITLE TRANSFER. Item Location: Dyersville, IA 52040 Equipment Sold "AS IS, WHERE IS": All equipment/property is sold "AS IS, WHERE IS" with no warranty or guarantees, expressed or implied, No operational assessments have been made by DPA Auctions on this item, it has been photographed ONLY.



#129 - 2009 Ford F250 XLT Super Duty Extended Cab Pickup (PZ1000, Unit 14190)

2009 Ford F250 XLT Super Duty Extended Cab Pickup (PZ1000, Unit 14190), 4x4, gas engine, automatic transmission, air conditioning, heat, Am/Fm CD stereo, cruise control, power windows & locks, running boards, LT265/70R17 tires, shows 155,187 miles. Notes: PLEASE ALLOW AT LEAST 60 DAYS FOR TITLE TRANSFER. Item Location: Dyersville, IA 52040 Equipment Sold "AS IS, WHERE IS": All equipment/property is sold "AS IS, WHERE IS" with no warranty or guarantees, expressed or implied, No operational assessments have been made by DPA Auctions on this item, it has been photographed ONLY.



#130 - Electric Tarp Motors (PZ1003)

Electric Tarp Motors (PZ1003), Electric tarp motors 3 - Agri cover & 1 - electric tarp motors. Notes: Item Location: Dyersville, IA 52040 Equipment Sold "AS IS, WHERE IS": All equipment/property is sold "AS IS, WHERE IS" with no warranty or guarantees, expressed or implied, No operational assessments have been made by DPA Auctions on this item, it has been photographed ONLY.



#131 - Cat 242B3 Skid Steer (PZ0996, Unit 977121)

Cat 242B3 Skid Steer (PZ0996, Unit 977121), diesel engine, hydrostatic transmission, heat, cab, lights, No bucket, 12-16.5 tires, shows 1273 hrs. Notes: No bucket. Item Location: Millersburg, IA 52308 Equipment Sold "AS IS, WHERE IS": All equipment/property is sold "AS IS, WHERE IS" with no warranty or guarantees, expressed or implied, No operational assessments have been made by DPA Auctions on this item, it has been photographed ONLY.



#132 - 1985 Heil Transport Trailer (PZ0987)

1985 Heil Transport Trailer (PZ0987), 1985 Heil 6000 gallon (1500-1000-1000-1000-1500) stainless steel liquid transport trailer, stainless steel ladder, catwalk, tandem axle, 11R22.5 tires. Notes: Item Location: Belmond, IA 50421 Equipment Sold "AS IS, WHERE IS": All equipment/property is sold "AS IS, WHERE IS" with no warranty or guarantees, expressed or implied, No operational assessments have been made by DPA Auctions on this item, it has been photographed ONLY.



#133 - 2014 RBR Venturi (JJ100)

2014 RBR Venturi (JJ100), Cummins 8.9L 350hp, Allison Transmission, heat, air conditioning, Am/Fm CD radio, CaseIH Flex-Air 810 dry air flow system, Raven Viper Pro, Raven Phoenix Receiver, Air 810 Spreader, 380/90R46, shows 1302 hours. Notes: Item Location: Albion, IL 62806 Equipment Sold "AS IS, WHERE IS": All equipment/property is sold "AS IS, WHERE IS" with no warranty or guarantees, expressed or implied, No operational assessments have been made by DPA Auctions on this item, it has been photographed ONLY.



#134 - 2006 Case IH 2020 Grain Head (PD1172)

2006 Case IH 2020 Grain Head (PD1172), 35 foot, flex head, dual drive. Notes: Item Location: Mc Leansboro, IL 62859 Equipment Sold "AS IS, WHERE IS": All equipment/property is sold "AS IS, WHERE IS" with no warranty or guarantees, expressed or implied, No operational assessments have been made by DPA Auctions on this item, it has been photographed ONLY.



#135 - 120' Hagie Spray Boom (TH401)

120' Hagie Spray Boom (TH401), 120', steel booms, center section is included and has (2) NEW cylinders, Norac system DOES NOT sell with the boom. Notes: Item Location: Conover, OH 45317 Equipment Sold "AS IS, WHERE IS": All equipment/property is sold "AS IS, WHERE IS" with no warranty or guarantees, expressed or implied, No operational assessments have been made by DPA Auctions on this item, it has been photographed ONLY.



#136 - 1992 International Silver Wheels (TH400)

1992 International Silver Wheels (TH400), 466 diesel 250 hp engine, Western bed with belt over chain, Dicky John monitor, not the original cab so the mileage is not accurate, original owner, belt has less than 2,000 acres. Notes: Certificate of Origin only. Item Location: Conover, OH 45317 Equipment Sold "AS IS, WHERE IS": All equipment/property is sold "AS IS, WHERE IS" with no warranty or guarantees, expressed or implied, No operational assessments have been made by DPA Auctions on this item, it has been photographed ONLY.



#137 - USC Seed Treater (PD1175)

USC Seed Treater (PD1175), Model LP800 seed treater, stainless steel inoculation tank, digital control panel. Notes: Item Location: Kalona, IA 52247 Equipment Sold "AS IS, WHERE IS": All equipment/property is sold "AS IS, WHERE IS" with no warranty or guarantees, expressed or implied, No operational assessments have been made by DPA Auctions on this item, it has been photographed ONLY.



#138 - Quickstak Palletizer Machine Model 25325 01 (PD1178)

Quickstak Palletizer Machine Model 25325 01 (PD1178), incorporates an air floatation table so that a 110 pound bag can be handles with little effort, single operator can palletize bags at 20 per minute rate depending on the size and number of bags per row, manual adjustment guides around the flotation table ensure a square pattern for virtually any size. Notes: Item Location: Kalona, IA 52247 Equipment Sold "AS IS, WHERE IS": All equipment/property is sold "AS IS, WHERE IS" with no warranty or guarantees, expressed or implied, No operational assessments have been made by DPA Auctions on this item, it has been photographed ONLY.



#139 - Seed Cleaner (PD1179)

Seed Cleaner (PD1179), motor on seed cleaner, dimensions are 49 width x 72 height x 72 length. Notes: Used for one semi load of beans only, otherwise NEW. Item Location: Kalona, IA 52247 Equipment Sold "AS IS, WHERE IS": All equipment/property is sold "AS IS, WHERE IS" with no warranty or guarantees, expressed or implied, No operational assessments have been made by DPA Auctions on this item, it has been photographed ONLY.



#140 - Gustafson CS1700 Seed Treater (PD1181)

Gustafson CS1700 Seed Treater (PD1181), with controls, 3 treater tank stands with pumps, 1 custom made stand capable of handling two seed boxes at a time, 1 grain leg with downspout and homemade ladder, dimensions are 11 foot wide x 9 foot high x 4.5 foot deep, leg laying down is 14 foot long x 5.5 foot wide x 1 foot high. Notes: Item Location: Kalona, IA 52247 Equipment Sold "AS IS, WHERE IS": All equipment/property is sold "AS IS, WHERE IS" with no warranty or guarantees, expressed or implied, No operational assessments have been made by DPA Auctions on this item, it has been photographed ONLY.



#141 - Scraper Draw Bar (PZ1005)

Scraper Draw Bar (PZ1005), Scraper draw bar hitch, for 9x00, 9x20 or 9x30 John Deere series tractors. Notes: Item Location: Vandalia, IL 62471 Equipment Sold "AS IS, WHERE IS": All equipment/property is sold "AS IS, WHERE IS" with no warranty or guarantees, expressed or implied, No operational assessments have been made by DPA Auctions on this item, it has been photographed ONLY.



#142 - Fuel Storage Tank (PZ1007)

Fuel Storage Tank (PZ1007), 15,000 gallon vertical steel fuel storage tank, 10'5" diameter, 23'6" height, could also be used for fertilizer storage. Notes: Item Location: Vandalia, IL 62471 Equipment Sold "AS IS, WHERE IS": All equipment/property is sold "AS IS, WHERE IS" with no warranty or guarantees, expressed or implied, No operational assessments have been made by DPA Auctions on this item, it has been photographed ONLY.



#143 - DMI Anhydrous Applicator (PD1170)

DMI Anhydrous Applicator (PD1170), 17 shank, Hinniker controller. Notes: Item Location: Mc Leansboro, IL 62859 Equipment Sold "AS IS, WHERE IS": All equipment/property is sold "AS IS, WHERE IS" with no warranty or guarantees, expressed or implied, No operational assessments have been made by DPA Auctions on this item, it has been photographed ONLY.



#144 - 2008 USC LP800 Seed Treater (DL430)

2008 USC LP800 Seed Treater (DL430), dual USC 2000 conveyors and loading hopper, 30ft long unload conveyor, 18ft long load conveyor, Masterflex Easy Load II, atomizer, calibration tube, control panels, treating drum 27 gallon chemical mixing tank, adjustable seed flow gate, Leeson pump motor, mounted on open trailer with a treated wood floor 25ft length 7ft wide with dual loading gear, tandem axle, & standard ball hitch, owner's manual included. Notes: Trailer has no title. Machine was used for 2 seasons without problems. Cleaned and serviced, ready for use. Purchased with slight damage to outlet conveyor - does not effect function of treater. Item Location: Blandinsville, IL 61420 Equipment Sold "AS IS, WHERE IS": All equipment/property is sold "AS IS, WHERE IS" with no warranty or guarantees, expressed or implied, No operational assessments have been made by DPA Auctions on this item, it has been photographed ONLY.



#145 - M-C Grain Dryer (PZ1009)

M-C Grain Dryer (PZ1009), M-C model 975 EM Continuous flow grain dryer, 2 fan system. Notes: This grain dryer must be removed by February 28th, 2019 with NO Exceptions. Dismantle, removal and transportation is at the expense, risk and liability of the buyer. If buyer requires assistance from the location, hourly rate will be charged. Item Location: Clarinda, IA 51632 Equipment Sold "AS IS, WHERE IS": All equipment/property is sold "AS IS, WHERE IS" with no warranty or guarantees, expressed or implied, No operational assessments have been made by DPA Auctions on this item, it has been photographed ONLY.



#146 - 2000 Kiefer Stockman 20' Trailer (KMK726)

2000 Kiefer Stockman 20' Trailer (KMK726), 20' long x 6' 8" wide, silver, aero-dynamic nose, tandem axle, two (2) - 7,000 lb. torsion axles, wood floor, trailer mats, center gate with half slide, 1/2 slide full swing rear gate, ST 23/ 85 R 16, 14 ply radial tires, at 50% tread or better, spare tire. Notes: The trailer has been serviced and ready for the road. Rust has been fixed at the bottom. Some surface rust on the sides. Item Location: Hyannis, NE 69350 Equipment Sold "AS IS, WHERE IS": All equipment/property is sold "AS IS, WHERE IS" with no warranty or guarantees, expressed or implied, No operational assessments have been made by DPA Auctions on this item, it has been photographed ONLY.



#147 - Westphal Hammer Mill (PZ1013)

Westphal Hammer Mill (PZ1013), Westphal hammer mill, 50 hp electric motor, 3600 rpm, 3 phase, mill is 19" x 8.5", 6 hammers in a row - 6 rows. Notes: Item Location: Hopkinton, IA 52237 Equipment Sold "AS IS, WHERE IS": All equipment/property is sold "AS IS, WHERE IS" with no warranty or guarantees, expressed or implied, No operational assessments have been made by DPA Auctions on this item, it has been photographed ONLY.



#148 - Westphal Hammer Mill (PZ1015)

Westphal Hammer Mill (PZ1015), Westphal hammer mill, 50 hp electric motor, 3600 rpm, 3 phase, mill is 19" x 8.5", 6 hammers in a row - 6 rows. Notes: Item Location: Hopkinton, IA 52237 Equipment Sold "AS IS, WHERE IS": All equipment/property is sold "AS IS, WHERE IS" with no warranty or guarantees, expressed or implied, No operational assessments have been made by DPA Auctions on this item, it has been photographed ONLY.



#149 - Press Brake (PZ1011)

Press Brake (PZ1011), 100 ton press brake, 14' bed, air assist, 8' dies. Notes: Been all gone threw, everything works good. Item Location: Hopkinton, IA 52237 Equipment Sold "AS IS, WHERE IS": All equipment/property is sold "AS IS, WHERE IS" with no warranty or guarantees, expressed or implied, No operational assessments have been made by DPA Auctions on this item, it has been photographed ONLY.



#150 - American Pacemaker Lathe (PZ1012)

American Pacemaker Lathe (PZ1012), American Pacemaker leath, 6' between centers, taper attachment, 16" swing, 3 chucks. Notes: Item Location: Hopkinton, IA 52237 Equipment Sold "AS IS, WHERE IS": All equipment/property is sold "AS IS, WHERE IS" with no warranty or guarantees, expressed or implied, No operational assessments have been made by DPA Auctions on this item, it has been photographed ONLY.



#151 - Breaker (PZ1014)

Breaker (PZ1014), Breaker for skid steer. Notes: Item Location: Hopkinton, IA 52237 Equipment Sold "AS IS, WHERE IS": All equipment/property is sold "AS IS, WHERE IS" with no warranty or guarantees, expressed or implied, No operational assessments have been made by DPA Auctions on this item, it has been photographed ONLY.



#152 - 21,000 gal Fiberglass tank (TR6182)

21,000 gal Fiberglass tank (TR6182), 1995 Schaben, fiberglass tank, approx 12' diameter, approx 25' tall. Notes: Item Location: Hooper, NE 68031 Equipment Sold "AS IS, WHERE IS": All equipment/property is sold "AS IS, WHERE IS" with no warranty or guarantees, expressed or implied, No operational assessments have been made by DPA Auctions on this item, it has been photographed ONLY.



#153 - 2006 Case IH 8010 Combine (PD1167)

2006 Case IH 8010 Combine (PD1167), diesel engine, hydrostatic drive transmission, grain tank extensions, Pro 600 monitor, cab heat/air conditioning, tip tops with tip ups, good tires, 2700 engine hours, 1900 separator hours. Notes: \$5000 in Inspection & Repairs at year end 2018. Item Location: Mc Leansboro, IL 62859 Equipment Sold "AS IS, WHERE IS": All equipment/property is sold "AS IS, WHERE IS" with no warranty or guarantees, expressed or implied, No operational assessments have been made by DPA Auctions on this item, it has been photographed ONLY.



#154 - 2013 Chevrolet 1500 (TR6182)

2013 Chevrolet 1500 (TR6182), gas engine, Heat/AC, automatic transmission, AM/FM CD player, extended cab, 4x4, Z71 package, tow package, bed mat, bed cover, power windows/locks/mirrors, 165793 miles. Notes: Has a bad Lifter and Hail damage. Item Location: Hooper, NE 68031 Equipment Sold "AS IS, WHERE IS": All equipment/property is sold "AS IS, WHERE IS" with no warranty or guarantees, expressed or implied, No operational assessments have been made by DPA Auctions on this item, it has been photographed ONLY.



#155 - Allis Chalmers Cultivator (TR6176)

Allis Chalmers Cultivator (TR6176), 8 row, Allis Chalmers, 3 point. Notes: Item Location: Monroe, NE 68647 Equipment Sold "AS IS, WHERE IS": All equipment/property is sold "AS IS, WHERE IS" with no warranty or guarantees, expressed or implied, No operational assessments have been made by DPA Auctions on this item, it has been photographed ONLY.



#156 - Oliver 283 Cultivator (TR6177)

Oliver 283 Cultivator (TR6177), Model 283, pull type, hydraulic lift, single axle, folding wings. Notes: Item Location: Monroe, NE 68647 Equipment Sold "AS IS, WHERE IS": All equipment/property is sold "AS IS, WHERE IS" with no warranty or guarantees, expressed or implied, No operational assessments have been made by DPA Auctions on this item, it has been photographed ONLY.



#157 - John Deere Cultivator (TR6180)

John Deere Cultivator (TR6180), approx 12' cultivator, John Deere, (3) Noble harrow attachments, 3 point. Notes: Item Location: Monroe, NE 68647 Equipment Sold "AS IS, WHERE IS": All equipment/property is sold "AS IS, WHERE IS" with no warranty or guarantees, expressed or implied, No operational assessments have been made by DPA Auctions on this item, it has been photographed ONLY.



#158 - Gooseneck Trailer (TR6171)

Gooseneck Trailer (TR6171), gooseneck trailer, tandem axle, dayton rims, spring ride suspension. Panels on top do not sell. Steel floor. Notes: NO TITLE. Item Location: Monroe, NE 68647 Equipment Sold "AS IS, WHERE IS": All equipment/property is sold "AS IS, WHERE IS" with no warranty or guarantees, expressed or implied, No operational assessments have been made by DPA Auctions on this item, it has been photographed ONLY.



#159 - S&H Feed Wagon (TR6170)

S&H Feed Wagon (TR6170), S&H Mfg. Model 90 Bunk Feeder, single axle. Notes: Tire will be fixed before picking up. Item Location: Monroe, NE 68647 Equipment Sold "AS IS, WHERE IS": All equipment/property is sold "AS IS, WHERE IS" with no warranty or guarantees, expressed or implied, No operational assessments have been made by DPA Auctions on this item, it has been photographed ONLY.



#160 - Feed Wagon (TR6172)

Feed Wagon (TR6172), Feed wagon, single axle, PTO, with side auger. Notes: Item Location: Monroe, NE 68647 Equipment Sold "AS IS, WHERE IS": All equipment/property is sold "AS IS, WHERE IS" with no warranty or guarantees, expressed or implied, No operational assessments have been made by DPA Auctions on this item, it has been photographed ONLY.



#161 - Arts Way Grinder/Mixer (TR6178)

Arts Way Grinder/Mixer (TR6178), Arts Way Model 325-A, unloading auger not pictured but does come with, Also new parts for the grinder are included, single axle PTO, Electronic scale. Notes: Item Location: Monroe, NE 68647 Equipment Sold "AS IS, WHERE IS": All equipment/property is sold "AS IS, WHERE IS" with no warranty or guarantees, expressed or implied, No operational assessments have been made by DPA Auctions on this item, it has been photographed ONLY.



#162 - New Holland 352 (TR6179)

New Holland 352 (TR6179), New Holland Model 352, single axle, PTO, unloading auger does not work. Notes: Item Location: Monroe, NE 68647 Equipment Sold "AS IS, WHERE IS": All equipment/property is sold "AS IS, WHERE IS" with no warranty or guarantees, expressed or implied, No operational assessments have been made by DPA Auctions on this item, it has been photographed ONLY.



#163 - 2008 Cat Challenger 965b Tractor (PD1168)

2008 Cat Challenger 965b Tractor (PD1168), Caterpillar diesel turbocharger, powershift transmission, hitch, hydraulic system, tires are singles 35.5, leather seat, 9200 hours. Notes: Runs strong. Item Location: Mc Leansboro, IL 62859 Equipment Sold "AS IS, WHERE IS": All equipment/property is sold "AS IS, WHERE IS" with no warranty or guarantees, expressed or implied, No operational assessments have been made by DPA Auctions on this item, it has been photographed ONLY.



#164 - John Deere 800 Swather (TR6174)

John Deere 800 Swather (TR6174), with draper head attachment, self propelled, gas engine, shuttle transmission. Notes: Item Location: Monroe, NE 68647 Equipment Sold "AS IS, WHERE IS": All equipment/property is sold "AS IS, WHERE IS" with no warranty or guarantees, expressed or implied, No operational assessments have been made by DPA Auctions on this item, it has been photographed ONLY.



#165 - John Deere 780 Swather (TR6175)

John Deere 780 Swather (TR6175) with 78D draper head attachment, self propelled, gas engine, shuttle transmission. Notes: Trailer included. Item Location: Monroe, NE 68647 Equipment Sold "AS IS, WHERE IS": All equipment/property is sold "AS IS, WHERE IS" with no warranty or guarantees, expressed or implied, No operational assessments have been made by DPA Auctions on this item, it has been photographed ONLY.



#166 - Grain Drill (TR6173)

Grain Drill (TR6173), approx 8' grain drill. Notes: Item Location: Monroe, NE 68647 Equipment Sold "AS IS, WHERE IS": All equipment/property is sold "AS IS, WHERE IS" with no warranty or guarantees, expressed or implied, No operational assessments have been made by DPA Auctions on this item, it has been photographed ONLY.



#167 - Induction Tank (TR7015)

Induction Tank (TR7015), Ip pumps, Cal tubes, stands. Notes: Item Location: Mountain, ND 58262 Equipment Sold "AS IS, WHERE IS": All equipment/property is sold "AS IS, WHERE IS" with no warranty or guarantees, expressed or implied, No operational assessments have been made by DPA Auctions on this item, it has been photographed ONLY.



#168 - Induction Tank (TR7016)

Induction Tank (TR7016), Ip pumps, Cal tubes, stands. Notes: Item Location: Mountain, ND 58262 Equipment Sold "AS IS, WHERE IS": All equipment/property is sold "AS IS, WHERE IS" with no warranty or guarantees, expressed or implied, No operational assessments have been made by DPA Auctions on this item, it has been photographed ONLY.



#169 - Induction Tank (TR7017)

Induction Tank (TR7017), tank, stands. Notes: Item Location: Mountain, ND 58262 Equipment Sold "AS IS, WHERE IS": All equipment/property is sold "AS IS, WHERE IS" with no warranty or guarantees, expressed or implied, No operational assessments have been made by DPA Auctions on this item, it has been photographed ONLY.



#170 - Induction Tank (TR7018)

Induction Tank (TR7018), tank, stand. Notes: Item Location: Mountain, ND 58262 Equipment Sold "AS IS, WHERE IS": All equipment/property is sold "AS IS, WHERE IS" with no warranty or guarantees, expressed or implied, No operational assessments have been made by DPA Auctions on this item, it has been photographed ONLY.



#171 - Induction Tank (TR7019)

Induction Tank (TR7019), Ip pumps, stands. Notes: Item Location: Mountain, ND 58262 Equipment Sold "AS IS, WHERE IS": All equipment/property is sold "AS IS, WHERE IS" with no warranty or guarantees, expressed or implied, No operational assessments have been made by DPA Auctions on this item, it has been photographed ONLY.



#172 - Ray-Man Floater Loader (AL575)

Ray-Man Floater Loader (AL575), Model RM2810, 27 hp Kawasaki motor, less than 100 hours on motor, new battery, was used for limestone and gypsum, 2nd owner, farmer owned, stored inside. Notes: Item Location: Oconee, IL 62553 Equipment Sold "AS IS, WHERE IS": All equipment/property is sold "AS IS, WHERE IS" with no warranty or guarantees, expressed or implied, No operational assessments have been made by DPA Auctions on this item, it has been photographed ONLY.



#173 - 2006 Case IH Steiger STX480 Tractor (PD1169)

2006 Case IH Steiger STX480 Tractor (PD1169), Cummins 14.9L diesel engine, power shift transmission, pan hitch, articulated 4WD, hydrostatic power, 7600 hours, tires are 650/38. Notes: Runs great, no leaks found. Item Location: Mc Leansboro, IL 62859 Equipment Sold "AS IS, WHERE IS": All equipment/property is sold "AS IS, WHERE IS" with no warranty or guarantees, expressed or implied, No operational assessments have been made by DPA Auctions on this item, it has been photographed ONLY.



#175 - Hobart Welder (PZ1139)

Hobart Welder (PZ1139), Hobart model G-213 gas welder, 200 amps, 25 volts, portable. Notes: Item Location: Hopkinton, IA 52237 Equipment Sold "AS IS, WHERE IS": All equipment/property is sold "AS IS, WHERE IS" with no warranty or guarantees, expressed or implied, No operational assessments have been made by DPA Auctions on this item, it has been photographed ONLY.



#176 - Continental Cooler (PZ0989)

Continental Cooler (PZ0989), Continental Mangum cooler. Notes: Item Location: Grinnell, IA 50112 Equipment Sold "AS IS, WHERE IS": All equipment/property is sold "AS IS, WHERE IS" with no warranty or guarantees, expressed or implied, No operational assessments have been made by DPA Auctions on this item, it has been photographed ONLY.



#177 - Duo Lift Running Gear (PZ0968)

Duo Lift Running Gear (PZ0968), Duo Lift 5th wheel running gear, set up for double 1000 gallon tanks, 120' center for tank feet. Notes: Item Location: Beaman, IA 50609 Equipment Sold "AS IS, WHERE IS": All equipment/property is sold "AS IS, WHERE IS" with no warranty or guarantees, expressed or implied, No operational assessments have been made by DPA Auctions on this item, it has been photographed ONLY.



#178 - Running gear (PZ0976)

Running gear (PZ0976), 5th wheel running gear, used for 1450 NH3 nurse tank, 14L x 16.1 flotation tires. Notes: Item Location: Beaman, IA 50609 Equipment Sold "AS IS, WHERE IS": All equipment/property is sold "AS IS, WHERE IS" with no warranty or guarantees, expressed or implied, No operational assessments have been made by DPA Auctions on this item, it has been photographed ONLY.



#179 - Running gear (PZ0977)

Running gear (PZ0977), 5th wheel running gear, used for 1450 NH3 nurse tank, 14L x 16.1 flotation tires. Notes: Item Location: Beaman, IA 50609 Equipment Sold "AS IS, WHERE IS": All equipment/property is sold "AS IS, WHERE IS" with no warranty or guarantees, expressed or implied, No operational assessments have been made by DPA Auctions on this item, it has been photographed ONLY.



#180 - Running gear (PZ0978)

Running gear (PZ0978), 5th wheel running gear, used for 1450 NH3 nurse tank, 14L x 16.1 flotation tires. Notes: Item Location: Beaman, IA 50609 Equipment Sold "AS IS, WHERE IS": All equipment/property is sold "AS IS, WHERE IS" with no warranty or guarantees, expressed or implied, No operational assessments have been made by DPA Auctions on this item, it has been photographed ONLY.



#181 - Running gear (PZ0979)

Running gear (PZ0979), 5th wheel running gear, used for 1450 NH3 nurse tank, 14L x 16.1 flotation tires. Notes: Item Location: Beaman, IA 50609 Equipment Sold "AS IS, WHERE IS": All equipment/property is sold "AS IS, WHERE IS" with no warranty or guarantees, expressed or implied, No operational assessments have been made by DPA Auctions on this item, it has been photographed ONLY.



#182 - Running gear (PZ0980)

Running gear (PZ0980), 5th wheel running gear, used for 1450 NH3 nurse tank, 14L x 16.1 flotation tires. Notes: Item Location: Beaman, IA 50609 Equipment Sold "AS IS, WHERE IS": All equipment/property is sold "AS IS, WHERE IS" with no warranty or guarantees, expressed or implied, No operational assessments have been made by DPA Auctions on this item, it has been photographed ONLY.



#183 - 2010 John Deere 8295r Tractor (PD1171)

2010 John Deere 8295r Tractor (PD1171), John Deere 9.0L diesel engine, John Deere powershift transmission, MFWD, 3 point hitch, PTO, CommandView, heat/AC, hydrostatic power, auto steer ready, fully weighted, 5 remotes, active seat, 6327 hours, good tires. Notes: Was used for planting and for grain cart. Item Location: Mc Leansboro, IL 62859 Equipment Sold "AS IS, WHERE IS": All equipment/property is sold "AS IS, WHERE IS" with no warranty or guarantees, expressed or implied, No operational assessments have been made by DPA Auctions on this item, it has been photographed ONLY.



#184 - Top Air Conveyor (PZ0969, Unit 5013)

Top Air Conveyor (PZ0969, Unit 5013), Top Air 30' belt conveyor, electric drive-220V, portable. Notes: Item Location: Beaman, IA 50609 Equipment Sold "AS IS, WHERE IS": All equipment/property is sold "AS IS, WHERE IS" with no warranty or guarantees, expressed or implied, No operational assessments have been made by DPA Auctions on this item, it has been photographed ONLY.



#185 - Meridian Hopper (PZ0972)

Meridian Hopper (PZ0972), Meridain hopper, steel stands. Notes: Item Location: Beaman, IA 50609 Equipment Sold "AS IS, WHERE IS": All equipment/property is sold "AS IS, WHERE IS" with no warranty or guarantees, expressed or implied, No operational assessments have been made by DPA Auctions on this item, it has been photographed ONLY.



#186 - 2000 Ford Ranger 4x4 (TH392)

2000 Ford Ranger 4x4 (TH392), 4.0L motor, automatic transmission, AM/FM, 4x4, 4 door, A/C, electric windows and doors. Notes: Item Location: Coon Rapids, IA 50058 Equipment Sold "AS IS, WHERE IS": All equipment/property is sold "AS IS, WHERE IS" with no warranty or guarantees, expressed or implied, No operational assessments have been made by DPA Auctions on this item, it has been photographed ONLY.



#187 - 5 Heavy Duty Freestanding Panels (ME374)

5 Heavy Duty Freestanding Panels (ME374), TH Custom Manufacturing Freestanding Panels, full frame design built from 2-7/8" pipe, 24ft long by 5'9" tall, 7/8 rod ran through the uprights to prevent sharp edges, bent legs to prevent panel from sliding and to allow sturdy placement, saddle cuts on all uprights, drain holes on all uprights to prevent rusting from within the pipe, double chains standard on all panels. Notes: Shipping available anywhere in the U.S for additional charge. Item Location: Canistota, SD 57012 Equipment Sold "AS IS, WHERE IS": All equipment/property is sold "AS IS, WHERE IS" with no warranty or guarantees, expressed or implied, No operational assessments have been made by DPA Auctions on this item, it has been photographed ONLY.



#188 - 5 Heavy Duty Freestanding Panels (ME375)

5 Heavy Duty Freestanding Panels (ME375), TH Custom Manufacturing Freestanding Panels, full frame design built from 2-7/8" pipe, 24ft long by 5'9" tall, 7/8 rod ran through the uprights to prevent sharp edges, bent legs to prevent panel from sliding and to allow sturdy placement, saddle cuts on all uprights, drain holes on all uprights to prevent rusting from within the pipe, double chains standard on all panels. Notes: Shipping available anywhere in the U.S for additional charge. Item Location: Canistota, SD 57012 Equipment Sold "AS IS, WHERE IS": All equipment/property is sold "AS IS, WHERE IS" with no warranty or guarantees, expressed or implied, No operational assessments have been made by DPA Auctions on this item, it has been photographed ONLY.



#189 - 5 Heavy Duty Freestanding Panels (ME376)

5 Heavy Duty Freestanding Panels (ME376), TH Custom Manufacturing Freestanding Panels, full frame design built from 2-7/8" pipe, 24ft long by 5'9" tall, 7/8 rod ran through the uprights to prevent sharp edges, bent legs to prevent panel from sliding and to allow sturdy placement, saddle cuts on all uprights, drain holes on all uprights to prevent rusting from within the pipe, double chains standard on all panels. Notes: Shipping available anywhere in the U.S for additional charge. Item Location: Canistota, SD 57012 Equipment Sold "AS IS, WHERE IS": All equipment/property is sold "AS IS, WHERE IS" with no warranty or guarantees, expressed or implied, No operational assessments have been made by DPA Auctions on this item, it has been photographed ONLY.



#190 - Snow Blade (CP677)

Snow Blade (CP677), skid steer snow blade mount, Quick tach plate. Notes: Item Location: Dawson, NE 68337 Equipment Sold "AS IS, WHERE IS": All equipment/property is sold "AS IS, WHERE IS" with no warranty or guarantees, expressed or implied, No operational assessments have been made by DPA Auctions on this item, it has been photographed ONLY.



#191 - Markers (CP676)

Markers (CP676), 3-Point Tank Frame, John Deere Planter Markers, Markers fit 24 Planter, Hydraulic Lift Cylanders. Notes: Item Location: Dawson, NE 68337 Equipment Sold "AS IS, WHERE IS": All equipment/property is sold "AS IS, WHERE IS" with no warranty or guarantees, expressed or implied, No operational assessments have been made by DPA Auctions on this item, it has been photographed ONLY.



#192 - HighRise Adjustable Running Gear (CP686)

HighRise Adjustable Running Gear (CP686), 5th Wheel Steering. Notes: Item Location: Dawson, NE 68337 Equipment Sold "AS IS, WHERE IS": All equipment/property is sold "AS IS, WHERE IS" with no warranty or guarantees, expressed or implied, No operational assessments have been made by DPA Auctions on this item, it has been photographed ONLY.



#193 - HighRise Adjustable Running Gear (CP685)

HighRise Adjustable Running Gear (CP685), 5th Wheel Steering. Notes: Item Location: Dawson, NE 68337 Equipment Sold "AS IS, WHERE IS": All equipment/property is sold "AS IS, WHERE IS" with no warranty or guarantees, expressed or implied, No operational assessments have been made by DPA Auctions on this item, it has been photographed ONLY.



#194 - HighRise Adjustable Running Gear (CP684)

HighRise Adjustable Running Gear (CP684), 5th Wheel Steering. Notes: Item Location: Dawson, NE 68337 Equipment Sold "AS IS, WHERE IS": All equipment/property is sold "AS IS, WHERE IS" with no warranty or guarantees, expressed or implied, No operational assessments have been made by DPA Auctions on this item, it has been photographed ONLY.



#195 - HighRise Adjustable Running Gear (CP683)

HighRise Adjustable Running Gear (CP683), 5th Wheel Steering. Notes: Item Location: Dawson, NE 68337 Equipment Sold "AS IS, WHERE IS": All equipment/property is sold "AS IS, WHERE IS" with no warranty or guarantees, expressed or implied, No operational assessments have been made by DPA Auctions on this item, it has been photographed ONLY.



#196 - Lilliston Lehman Rolling Cultivator (CP-672)

Lilliston Lehman Rolling Cultivator (CP-672), 6-Row, 3-Point, Rear Draw Bar, Gauge Wheels. Notes: Item Location: Dawson, NE 68337 Equipment Sold "AS IS, WHERE IS": All equipment/property is sold "AS IS, WHERE IS" with no warranty or guarantees, expressed or implied, No operational assessments have been made by DPA Auctions on this item, it has been photographed ONLY.



#197 - Lilliston Lehman Rolling Cultivator, (CP-673)

Lilliston Lehman Rolling Cultivator, CP-673, 6-Row, 3-Point, Gauge Wheels. Notes: Item Location: Dawson, NE 68337 Equipment Sold "AS IS, WHERE IS": All equipment/property is sold "AS IS, WHERE IS" with no warranty or guarantees, expressed or implied, No operational assessments have been made by DPA Auctions on this item, it has been photographed ONLY.



#198 - John Deere Rotory Hoe (CP-674)

John Deere Rotory Hoe (CP-674), Model 400, 3-Point, Cups are Good. Notes: Item Location: Dawson, NE 68337 Equipment Sold "AS IS, WHERE IS": All equipment/property is sold "AS IS, WHERE IS" with no warranty or guarantees, expressed or implied, No operational assessments have been made by DPA Auctions on this item, it has been photographed ONLY.



#199 - Great Plains TurboTill 3000 (CP680)

Great Plains TurboTill 3000 (CP680), 30' Length, Crumble Baskets, Soil Conditioner, Hydraulic Wings, Hydraulic Lift, Tandems. Notes: Item Location: Dawson, NE 68337 Equipment Sold "AS IS, WHERE IS": All equipment/property is sold "AS IS, WHERE IS" with no warranty or guarantees, expressed or implied, No operational assessments have been made by DPA Auctions on this item, it has been photographed ONLY.



#200 - Class 9 Ripper (CP682)

Class 9 Ripper (CP682), Ateco chisel knives, Euclid axle, hydraulic lift. Notes: Item Location: Dawson, NE 68337 Equipment Sold "AS IS, WHERE IS": All equipment/property is sold "AS IS, WHERE IS" with no warranty or guarantees, expressed or implied, No operational assessments have been made by DPA Auctions on this item, it has been photographed ONLY.



#201 - 2003 Dodge Ram 3500 4X4 Pickup (CP655)

2003 Dodge Ram 3500 4X4 Pickup (CP655) Cummins Diesel Engine, Automatic Transmission, Crew Cab, AM-FM-CD Radio, A/C, Heat, Power Windows, Power Locks, Cruise Control, Shows 283,187 Miles, Miles will Be Higher Because the Pickup is Being Driven Dailey. Notes: Item Location: Dawson, NE 68337 Equipment Sold "AS IS, WHERE IS": All equipment/property is sold "AS IS, WHERE IS" with no warranty or guarantees, expressed or implied, No operational assessments have been made by DPA Auctions on this item, it has been photographed ONLY.



#202 - Oil Tank (CP-675)

Oil Tank (CP-675) Oil Tank fits a Wet Kit. Notes: Item Location: Dawson, NE 68337 Equipment Sold "AS IS, WHERE IS": All equipment/property is sold "AS IS, WHERE IS" with no warranty or guarantees, expressed or implied, No operational assessments have been made by DPA Auctions on this item, it has been photographed ONLY.



#203 - Orthman Hubs and Hub Parts (ME385)

Orthman Hubs and Hub Parts (ME385). Notes: Item Location: Clarks Grove, MN 56016 Equipment Sold "AS IS, WHERE IS": All equipment/property is sold "AS IS, WHERE IS" with no warranty or guarantees, expressed or implied, No operational assessments have been made by DPA Auctions on this item, it has been photographed ONLY.



#204 - Orthman Wiring Harness and Harness Extension (ME396)

Orthman Wiring Harness and Harness Extension (ME396). Notes: Item Location: Clarks Grove, MN 56016 Equipment Sold "AS IS, WHERE IS": All equipment/property is sold "AS IS, WHERE IS" with no warranty or guarantees, expressed or implied, No operational assessments have been made by DPA Auctions on this item, it has been photographed ONLY.



#205 - Orthman Hydraulic Cushioned Arms (ME397)

Orthman Hydraulic Cushioned Arms (ME397), Orthman Manufacturing hydraulic cushioned arms. Notes: Item Location: Clarks Grove, MN 56016 Equipment Sold "AS IS, WHERE IS": All equipment/property is sold "AS IS, WHERE IS" with no warranty or guarantees, expressed or implied, No operational assessments have been made by DPA Auctions on this item, it has been photographed ONLY.



#206 - Orthman Magnetic Lift Switch (ME386)

Orthman Magnetic Lift Switch (ME386). Notes: Item Location: Clarks Grove, MN 56016 Equipment Sold "AS IS, WHERE IS": All equipment/property is sold "AS IS, WHERE IS" with no warranty or guarantees, expressed or implied, No operational assessments have been made by DPA Auctions on this item, it has been photographed ONLY.



#207 - Miscellaneous Orthman Mounting Hardware (ME387)

Miscellaneous Orthman Mounting Hardware (ME387). Notes: Item Location: Clarks Grove, MN 56016 Equipment Sold "AS IS, WHERE IS": All equipment/property is sold "AS IS, WHERE IS" with no warranty or guarantees, expressed or implied, No operational assessments have been made by DPA Auctions on this item, it has been photographed ONLY.



#208 - Orthman Manufacturing Probe Box (ME388)

Orthman Manufacturing Probe Box (ME388), Orthman Manufacturing probe box, model number 332-770, in working condition when removed. Notes: Item Location: Clarks Grove, MN 56016 Equipment Sold "AS IS, WHERE IS": All equipment/property is sold "AS IS, WHERE IS" with no warranty or guarantees, expressed or implied, No operational assessments have been made by DPA Auctions on this item, it has been photographed ONLY.



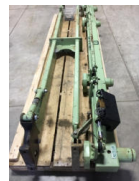
#209 - Orthman 2-Blade Steering Axle (ME377)

Orthman 2-Blade Steering Axle (ME377), Orthman Manufacturing 2-blade steering axle, model number 611-000. Notes: Item Location: Clarks Grove, MN 56016 Equipment Sold "AS IS, WHERE IS": All equipment/property is sold "AS IS, WHERE IS" with no warranty or guarantees, expressed or implied, No operational assessments have been made by DPA Auctions on this item, it has been photographed ONLY.



#210 - Orthman 4-Blade Tracker Steering Axle with Mounting Arms (ME378)

Orthman 4-Blade Tracker Steering Axle with Mounting Arms (ME378), Orthman Manufacturing 4-blade tracker steering axle with mounting arms, model number 611-032. Notes: Item Location: Clarks Grove, MN 56016 Equipment Sold "AS IS, WHERE IS": All equipment/property is sold "AS IS, WHERE IS" with no warranty or guarantees, expressed or implied, No operational assessments have been made by DPA Auctions on this item, it has been photographed ONLY.



#211 - Orthman Manufacturing Probe Box (ME389)

Orthman Manufacturing Probe Box (ME389), Orthman Manufacturing probe box, in working condition when removed. Notes: Item Location: Clarks Grove, MN 56016 Equipment Sold "AS IS, WHERE IS": All equipment/property is sold "AS IS, WHERE IS" with no warranty or guarantees, expressed or implied, No operational assessments have been made by DPA Auctions on this item, it has been photographed ONLY.



#212 - Orthman Tracker Console with wiring harness (ME379)

Orthman Tracker Console with wiring harness (ME379), Orthman Tracker MP III console with wiring harness. Notes: Item Location: Clarks Grove, MN 56016 Equipment Sold "AS IS, WHERE IS": All equipment/property is sold "AS IS, WHERE IS" with no warranty or guarantees, expressed or implied, No operational assessments have been made by DPA Auctions on this item, it has been photographed ONLY.



#213 - Orthman Manufacturing Probe Box for Parts (ME390)

Orthman Manufacturing Probe Box for Parts (ME390), Orthman Manufacturing probe box, no sensor, parts only. Notes: Item Location: Clarks Grove, MN 56016 Equipment Sold "AS IS, WHERE IS": All equipment/property is sold "AS IS, WHERE IS" with no warranty or guarantees, expressed or implied, No operational assessments have been made by DPA Auctions on this item, it has been photographed ONLY.



#214 - Orthman Tracker Console with wiring harness (ME380)

Orthman Tracker Console with wiring harness (ME380), Orthman Tracker MP III console with wiring harness. Notes: Item Location: Clarks Grove, MN 56016 Equipment Sold "AS IS, WHERE IS": All equipment/property is sold "AS IS, WHERE IS" with no warranty or guarantees, expressed or implied, No operational assessments have been made by DPA Auctions on this item, it has been photographed ONLY.



#215 - 8 Orthman Yolks (ME391)

8 Orthman Yolks (ME391), 8 yolks, came off of planter, still in good condition. Notes: Item Location: Clarks Grove, MN 56016 Equipment Sold "AS IS, WHERE IS": All equipment/property is sold "AS IS, WHERE IS" with no warranty or guarantees, expressed or implied, No operational assessments have been made by DPA Auctions on this item, it has been photographed ONLY.



#216 - Orthman Tracker Console with Wiring Harness (ME381)

Orthman Tracker Console with Wiring Harness (ME381), Orthman Tracker MP III console with wiring harness. Notes: Item Location: Clarks Grove, MN 56016 Equipment Sold "AS IS, WHERE IS": All equipment/property is sold "AS IS, WHERE IS" with no warranty or guarantees, expressed or implied, No operational assessments have been made by DPA Auctions on this item, it has been photographed ONLY.



#217 - Factory Rebuilt 2-Blade Steering Axle (ME392)

Factory Rebuilt 2-Blade Steering Axle (ME392), Orthman 2-blade steering axle, factory rebuild in July of 2000. Notes: Item Location: Clarks Grove, MN 56016 Equipment Sold "AS IS, WHERE IS": All equipment/property is sold "AS IS, WHERE IS" with no warranty or guarantees, expressed or implied, No operational assessments have been made by DPA Auctions on this item, it has been photographed ONLY.



#218 - Orthman Disks (ME382)

Orthman Disks (ME382), Orthman Disks, two are roughly 26" and other two are roughly 23.5". Notes: Item Location: Clarks Grove, MN 56016 Equipment Sold "AS IS, WHERE IS": All equipment/property is sold "AS IS, WHERE IS" with no warranty or guarantees, expressed or implied, No operational assessments have been made by DPA Auctions on this item, it has been photographed ONLY.



#219 - Orthman Tracker Arms and Probes (ME393)

Orthman Tracker Arms and Probes (ME393), Orthman Manufacturing Tracker arms and probes. Notes: Item Location: Clarks Grove, MN 56016 Equipment Sold "AS IS, WHERE IS": All equipment/property is sold "AS IS, WHERE IS" with no warranty or guarantees, expressed or implied, No operational assessments have been made by DPA Auctions on this item, it has been photographed ONLY.



#220 - Orthman Disk Scrapers (ME383)

Orthman Disk Scrapers (ME383). Notes: Item Location: Clarks Grove, MN 56016 Equipment Sold "AS IS, WHERE IS": All equipment/property is sold "AS IS, WHERE IS" with no warranty or guarantees, expressed or implied, No operational assessments have been made by DPA Auctions on this item, it has been photographed ONLY.



#221 - Dickey John Lift Switches (ME394)

Dickey John Lift Switches (ME394), two lift switches included in this lot. Notes: Item Location: Clarks Grove, MN 56016 Equipment Sold "AS IS, WHERE IS": All equipment/property is sold "AS IS, WHERE IS" with no warranty or guarantees, expressed or implied, No operational assessments have been made by DPA Auctions on this item, it has been photographed ONLY.



#222 - Front and Rear Sensor (ME384)

Front and Rear Sensor (ME384), Orthman front and rear sensor. Notes: Item Location: Clarks Grove, MN 56016 Equipment Sold "AS IS, WHERE IS": All equipment/property is sold "AS IS, WHERE IS" with no warranty or guarantees, expressed or implied, No operational assessments have been made by DPA Auctions on this item, it has been photographed ONLY.



#223 - Dickey John Lift Switches (ME395)

Dickey John Lift Switches (ME395), two lift switches included in this lot. Notes: Item Location: Clarks Grove, MN 56016 Equipment Sold "AS IS, WHERE IS": All equipment/property is sold "AS IS, WHERE IS" with no warranty or guarantees, expressed or implied, No operational assessments have been made by DPA Auctions on this item, it has been photographed ONLY.



#224 - Control Modules and Load Cells (ED829)

Control Modules and Load Cells (ED829), control modules and load cells for John Deere XP row units, total of 5 modules and 5 load cells. Notes: Item Location: Frankfort, IN 46041 Equipment Sold "AS IS, WHERE IS": All equipment/property is sold "AS IS, WHERE IS" with no warranty or guarantees, expressed or implied, No operational assessments have been made by DPA Auctions on this item, it has been photographed ONLY.



#225 - Gen 1 Control Module (ED808)

Gen 1 Control Module (ED808), cab control module for a Gen 1 20/20 Row Flow. Notes: Item Location: Frankfort, IN 46041 Equipment Sold "AS IS, WHERE IS": All equipment/property is sold "AS IS, WHERE IS" with no warranty or guarantees, expressed or implied, No operational assessments have been made by DPA Auctions on this item, it has been photographed ONLY.



#226 - Gen 1 Control Module (ED809)

Gen 1 Control Module (ED809), cab control module for a Gen 1 20/20 Row Flow. Notes: Item Location: Frankfort, IN 46041 Equipment Sold "AS IS, WHERE IS": All equipment/property is sold "AS IS, WHERE IS" with no warranty or guarantees, expressed or implied, No operational assessments have been made by DPA Auctions on this item, it has been photographed ONLY.



#227 - Gen 1 Control Module (ED810)

Gen 1 Control Module (ED810), cab control module for Gen 1 20/20 Row Flow. Notes: Item Location: Frankfort, IN 46041 Equipment Sold "AS IS, WHERE IS": All equipment/property is sold "AS IS, WHERE IS" with no warranty or guarantees, expressed or implied, No operational assessments have been made by DPA Auctions on this item, it has been photographed ONLY.



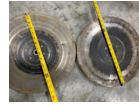
#228 - (32) Precision Planting Keeton Quick Attach Bracket (ED816)

(32) Precision Planting Keeton Quick Attach Bracket (ED816), total of 32 brand new quick attach brackets for Kinze planters with hardware. Notes: Item Location: Frankfort, IN 46041 Equipment Sold "AS IS, WHERE IS": All equipment/property is sold "AS IS, WHERE IS" with no warranty or guarantees, expressed or implied, No operational assessments have been made by DPA Auctions on this item, it has been photographed ONLY.



#229 - (72) Opener Disks (ED828)

(72) Opener Disks (ED828), total of 72 opener disks that still have lots of life in them, will fit most John Deere planters. Notes: Item Location: Frankfort, IN 46041 Equipment Sold "AS IS, WHERE IS": All equipment/property is sold "AS IS, WHERE IS" with no warranty or guarantees, expressed or implied, No operational assessments have been made by DPA Auctions on this item, it has been photographed ONLY.



#230 - John Deere Lid Seals (ED815)

John Deere Lid Seals (ED815), total of 6 John Deere vacuum meter lid seals. Notes: Item Location: Frankfort, IN 46041 Equipment Sold "AS IS, WHERE IS": All equipment/property is sold "AS IS, WHERE IS" with no warranty or guarantees, expressed or implied, No operational assessments have been made by DPA Auctions on this item, it has been photographed ONLY.



#231 - Air Spring Bag for Kinze 3000/4000 Series Planters (ED807)

Air Spring Bag for Kinze 3000/4000 Series Planters (ED807), airspring bag from Shoup Parts, for Kinze 3000 and 4000 series planters, replaces Kinze No GA11982. Notes: Item Location: Frankfort, IN 46041 Equipment Sold "AS IS, WHERE IS": All equipment/property is sold "AS IS, WHERE IS" with no warranty or guarantees, expressed or implied, No operational assessments have been made by DPA Auctions on this item, it has been photographed ONLY.



#232 - (10) John Deere 7200 Finishing Kits (ED812)

(10) John Deere 7200 Finishing Kits (ED812), total of 10 John Deere finishing kits, fitting for the vacuum hoses that connect to vSet2 meters. Notes: Item Location: Frankfort, IN 46041 Equipment Sold "AS IS, WHERE IS": All equipment/property is sold "AS IS, WHERE IS" with no warranty or guarantees, expressed or implied, No operational assessments have been made by DPA Auctions on this item, it has been photographed ONLY.



#233 - Precision Planting Finger Pickup Meter Covers (ED814)

Precision Planting Finger Pickup Meter Covers (ED814), total of 4 Precision Planting finger pickup meter covers. Notes: Item Location: Frankfort, IN 46041 Equipment Sold "AS IS, WHERE IS": All equipment/property is sold "AS IS, WHERE IS" with no warranty or guarantees, expressed or implied, No operational assessments have been made by DPA Auctions on this item, it has been photographed ONLY.



#234 - John Deere Air Bags (ED818)

John Deere Air Bags (ED818), John Deere air bags with brackets and bolts. Notes: Item Location: Frankfort, IN 46041 Equipment Sold "AS IS, WHERE IS": All equipment/property is sold "AS IS, WHERE IS" with no warranty or guarantees, expressed or implied, No operational assessments have been made by DPA Auctions on this item, it has been photographed ONLY.



#235 - John Deere Air Bags (ED819)

John Deere Air Bags (ED819), John Deere air bags with brackets and bolts. Notes: Item Location: Frankfort, IN 46041 Equipment Sold "AS IS, WHERE IS": All equipment/property is sold "AS IS, WHERE IS" with no warranty or guarantees, expressed or implied, No operational assessments have been made by DPA Auctions on this item, it has been photographed ONLY.



#236 - John Deere Air Bags (ED820)

John Deere Air Bags (ED820), John Deere air bags with brackets and bolts. Notes: Item Location: Frankfort, IN 46041 Equipment Sold "AS IS, WHERE IS": All equipment/property is sold "AS IS, WHERE IS" with no warranty or guarantees, expressed or implied, No operational assessments have been made by DPA Auctions on this item, it has been photographed ONLY.



#237 - Hex Shafts (ED824)

Hex Shafts (ED824), hex shafts for ground drive planter, came off a JD DB60, they have not been cut. Notes: Item Location: Frankfort, IN 46041 Equipment Sold "AS IS, WHERE IS": All equipment/property is sold "AS IS, WHERE IS" with no warranty or guarantees, expressed or implied, No operational assessments have been made by DPA Auctions on this item, it has been photographed ONLY.



#238 - John Deere A51835 Meter Housing (ED813)

John Deere A51835 Meter Housing (ED813), John Deere A51835 meter housing for 1700 series vacuum planters. Notes: Item Location: Frankfort, IN 46041 Equipment Sold "AS IS, WHERE IS": All equipment/property is sold "AS IS, WHERE IS" with no warranty or guarantees, expressed or implied, No operational assessments have been made by DPA Auctions on this item, it has been photographed ONLY.



#239 - Pro Shaft Drives (ED821)

Pro Shaft Drives (ED821), Pro Shaft drives for John Deere meters from a JD DB60. Notes: Item Location: Frankfort, IN 46041 Equipment Sold "AS IS, WHERE IS": All equipment/property is sold "AS IS, WHERE IS" with no warranty or guarantees, expressed or implied, No operational assessments have been made by DPA Auctions on this item, it has been photographed ONLY.



#240 - Pro Shaft Drives (ED822)

Pro Shaft Drives (ED822), Pro Shaft drives for John Deere meters from a JD DB60. Notes: Item Location: Frankfort, IN 46041 Equipment Sold "AS IS, WHERE IS": All equipment/property is sold "AS IS, WHERE IS" with no warranty or guarantees, expressed or implied, No operational assessments have been made by DPA Auctions on this item, it has been photographed ONLY.



#241 - Pro Shaft Drives (ED823)

Pro Shaft Drives (ED823), Pro Shaft drives for John Deere meters from a JD DB60. Notes: Item Location: Frankfort, IN 46041 Equipment Sold "AS IS, WHERE IS": All equipment/property is sold "AS IS, WHERE IS" with no warranty or guarantees, expressed or implied, No operational assessments have been made by DPA Auctions on this item, it has been photographed ONLY.



#242 - Seed Tube Harnesses (ED826)

Seed Tube Harnesses (ED826), seed tube harness with the plug in for pro shaft drives. Notes: Item Location: Frankfort, IN 46041 Equipment Sold "AS IS, WHERE IS": All equipment/property is sold "AS IS, WHERE IS" with no warranty or guarantees, expressed or implied, No operational assessments have been made by DPA Auctions on this item, it has been photographed ONLY.



#243 - Seed Tube Harnesses (ED825)

Seed Tube Harnesses (ED825), seed tube harnesses with the plug in for pro shaft drives. Notes: Item Location: Frankfort, IN 46041 Equipment Sold "AS IS, WHERE IS": All equipment/property is sold "AS IS, WHERE IS" with no warranty or guarantees, expressed or implied, No operational assessments have been made by DPA Auctions on this item, it has been photographed ONLY.



#244 - Seed Tube Harness (ED827)

Seed Tube Harness (ED827), seed tube harness with the plug in for pro shaft drives. Notes: Item Location: Frankfort, IN 46041 Equipment Sold "AS IS, WHERE IS": All equipment/property is sold "AS IS, WHERE IS" with no warranty or guarantees, expressed or implied, No operational assessments have been made by DPA Auctions on this item, it has been photographed ONLY.



#245 - Keeton Quick Attach Seed Firmers (ED811)

Keeton Quick Attach Seed Firmers (ED811), seed firmers assembly for John Deere planter. Notes: Item Location: Frankfort, IN 46041 Equipment Sold "AS IS, WHERE IS": All equipment/property is sold "AS IS, WHERE IS" with no warranty or guarantees, expressed or implied, No operational assessments have been made by DPA Auctions on this item, it has been photographed ONLY.



#246 - Vacuum Tube Cap (ED817)

Vacuum Tube Cap (ED817), 3" vacuum tube cap. Notes: Item Location: Frankfort, IN 46041 Equipment Sold "AS IS, WHERE IS": All equipment/property is sold "AS IS, WHERE IS" with no warranty or guarantees, expressed or implied, No operational assessments have been made by DPA Auctions on this item, it has been photographed ONLY.

