

## Auction catalog

<b>Title</b>	Online Auction - January 8, 2019 10AM Central
<b>Description</b>	The following line of Fertilizer, Farm Implement, Truck, Trailer & Construction Equipment will be sold online with the bidding ending on January 8, 2019. Location of the equipment is given. Bidding within the last minute before the closing of a lot will extend the bidding time by an additional minute. Be prepared to bid accordingly. For more information, contact Del Peterson & Associates: 419 West Judy Drive Fremont NE, 68025 Phone: 800-492-9090 or 402-721-4388 Fax: 402-721-4583 E-mail: auction@delpeterson.com
<b>Date</b>	Tue, Jan 8, 2019
<b>Starts at</b>	10:00 AM
<b>Address</b>	PO Box 654, Fremont, NE 68026 USA
<b>Categories</b>	

### #1 - Polaris Magnum 425 ATV (PZ0883, Unit 144)

Polaris Magnum 425 ATV (PZ0883, Unit 144), 4x4, gas engine, automatic transmission, AT25x8R12 front tires. Notes: This 4 wheeler is a NON Runner. CERTIFICATE OF ORIGIN ONLY! Item Location: New Hampton, IA 50659 Equipment Sold "AS IS, WHERE IS": All equipment/property is sold "AS IS, WHERE IS" with no warranty or guarantees, expressed or implied, No operational assessments have been made by DPA Auctions on this item, it has been photographed ONLY.



### #2 - Diesel Fuel Tank (PZ0903)

Diesel Fuel Tank (PZ0903), Mack 63 gallon aluminum fuel tank. Notes: Item Location: Eldora, IA 50627 Equipment Sold "AS IS, WHERE IS": All equipment/property is sold "AS IS, WHERE IS" with no warranty or guarantees, expressed or implied, No operational assessments have been made by DPA Auctions on this item, it has been photographed ONLY.



### #3 - Stick Welder (PZ0904)

Stick Welder (PZ0904), Twentieth Century Arc welder. Notes: Item Location: Eldora, IA 50627 Equipment Sold "AS IS, WHERE IS": All equipment/property is sold "AS IS, WHERE IS" with no warranty or guarantees, expressed or implied, No operational assessments have been made by DPA Auctions on this item, it has been photographed ONLY.



### #4 - Cab Skirts (PZ0905)

Cab Skirts (PZ0905), Cab skirts with mounting brackets. Notes: Item Location: Eldora, IA 50627 Equipment Sold "AS IS, WHERE IS": All equipment/property is sold "AS IS, WHERE IS" with no warranty or guarantees, expressed or implied, No operational assessments have been made by DPA Auctions on this item, it has been photographed ONLY.



### #5 - Running Gear (PZ0890)

Running Gear (PZ0890), 5th wheel running gear, 14L-16.1 flotation tires. Notes: Item Location: Dewar, IA 50623 Equipment Sold "AS IS, WHERE IS": All equipment/property is sold "AS IS, WHERE IS" with no warranty or guarantees, expressed or implied, No operational assessments have been made by DPA Auctions on this item, it has been photographed ONLY.



### #6 - Running Gear (PZ0891)

Running Gear (PZ0891), 5th wheel running gear, 14L-16.1 flotation tires. Notes: Item Location: Dewar, IA 50623 Equipment Sold "AS IS, WHERE IS": All equipment/property is sold "AS IS, WHERE IS" with no warranty or guarantees, expressed or implied, No operational assessments have been made by DPA Auctions on this item, it has been photographed ONLY.



### #7 - Running Gear (PZ0892)

Running Gear (PZ0892), 5th wheel running gear, 14L-16.1 flotation tires. Notes: Item Location: Dewar, IA 50623 Equipment Sold "AS IS, WHERE IS": All equipment/property is sold "AS IS, WHERE IS" with no warranty or guarantees, expressed or implied, No operational assessments have been made by DPA Auctions on this item, it has been photographed ONLY.



## #8 - Loadout (PZ0941)

Loadout (PZ0941), 3" loadout, 11' upright and 12' horizontal with swivel and spring for raise/lower into tanks, spring can be adjusted for lift, inlet has 3" male quick coupler. Notes: Item Location: Walcott, IA 52773 Equipment Sold "AS IS, WHERE IS": All equipment/property is sold "AS IS, WHERE IS" with no warranty or guarantees, expressed or implied, No operational assessments have been made by DPA Auctions on this item, it has been photographed ONLY.



## #9 - Liquid Storage Tank (PZ8800)

Liquid Storage Tank (PZ8800), Approx. 12,000 gallon vertical steel liquid storage tank. Notes: This tank must be removed by July 10th, 2018 with NO exceptions. Dismantle, removal and transportation is at the expense, risk and liability of the buyer. Item Location: New Hampton, IA 50659 Equipment Sold "AS IS, WHERE IS": All equipment/property is sold "AS IS, WHERE IS" with no warranty or guarantees, expressed or implied, No operational assessments have been made by DPA Auctions on this item, it has been photographed ONLY.



## #10 - 2007 IHC 4300 Truck (PZ0882, Unit 873)

2007 IHC 4300 Truck (PZ0882, Unit 873), DT466 diesel engine, manual transmission, air conditioning, heat, Am/Fm radio, cruise control, single axle, air ride suspension, (Pump on drivers side NOT included), 11R22.5 tires, shows 127,565 miles. Notes: Pump on drivers side will be removed and does NOT go with truck. This truck has electrical issues, having trouble starting. Please call seller for more information. Item Location: New Hampton, IA 50659 Equipment Sold "AS IS, WHERE IS": All equipment/property is sold "AS IS, WHERE IS" with no warranty or guarantees, expressed or implied, No operational assessments have been made by DPA Auctions on this item, it has been photographed ONLY.



## #11 - 2005 Terra Gator 8103 Dry Floater (PZ0881, Unit 1147)

2005 Terra Gator 8103 Dry Floater (PZ0881, Unit 1147), John Deere diesel engine, Terra Shift transmission, air conditioning, heat, Am/Fm cassette radio, New Leader L4000 G4 - 13 stainless steel dry spreader box (S/N 135789), twin spinner, all hydraulic, New Leader Multiplier - 5 stainless steel insert (S/N 135790), Michelin Mega X Bib & Alliance 1000/50R25 tires, Raven Starlink GPS, Raven monitor, lightbar, shows 4681 hours, 56,042 miles. Notes: Item Location: New Hampton, IA 50659 Equipment Sold "AS IS, WHERE IS": All equipment/property is sold "AS IS, WHERE IS" with no warranty or guarantees, expressed or implied, No operational assessments have been made by DPA Auctions on this item, it has been photographed ONLY.



## #12 - Caterpillar 232B Skid Steer (PZ0885, Unit 3616)

Caterpillar 232B Skid Steer (PZ0885, Unit 3616), Cat diesel engine, hydrostatic transmission, air conditioning, heat, cab, 72" bucket, 10 x 16.5 tires, approximately 793 hours. Notes: Item Location: Waukon, IA 52172 Equipment Sold "AS IS, WHERE IS": All equipment/property is sold "AS IS, WHERE IS" with no warranty or guarantees, expressed or implied, No operational assessments have been made by DPA Auctions on this item, it has been photographed ONLY.



## #13 - Tyler Dry Spreader (PZ0900, Unit 21)

Tyler Dry Spreader (PZ0900, Unit 21), Tyler stainless steel dry spreader, single spinner, 16.5L-16.1SL flotation tires, NO PTO. Notes: No PTO. Item Location: Ackley, IA 50601 Equipment Sold "AS IS, WHERE IS": All equipment/property is sold "AS IS, WHERE IS" with no warranty or guarantees, expressed or implied, No operational assessments have been made by DPA Auctions on this item, it has been photographed ONLY.



## #14 - 2008 Wilson Grain Trailer (PZ0888, Unit 1575)

2008 Wilson Grain Trailer (PZ0888, Unit 1575), 2008 Wilson Pace Setter DWH 550 aluminum hopper bottom grain trailer, tandem axle, air ride suspension, electric roll over tarp, 11R22.5 tires, aluminum rims, (This trailer has been in a accident). Notes: This trailer has been in an accident. I have knowledge that, prior to or during the time I owned the motor vehicle, it sustained damage for which the cost of repair exceeded 50% of the fair market value before it became damaged. Please call seller for more information. Item Location: Dewar, IA 50623 Equipment Sold "AS IS, WHERE IS": All equipment/property is sold "AS IS, WHERE IS" with no warranty or guarantees, expressed or implied, No operational assessments have been made by DPA Auctions on this item, it has been photographed ONLY.



## #15 - 2006 IHC 9200i Truck (PZ0889, Unit 430)

2006 IHC 9200i Truck (PZ0889, Unit 430), Cummins ISM diesel engine, Meritor 10 speed transmission, air conditioning, heat, Am/Fm radio, cruise control, engine brake, wet kit, tandem axle, full screw, air ride suspension, 295/75R22.5 tires, shows 722,717 miles. Notes: This truck has been in a accident. I have knowledge that, prior to or during the time I owned the motor vehicle, it sustained damage for which the cost of repair exceeded 50% of the fair market value before it became damaged. Please call seller for more information. Item Location: Dewar, IA 50623 Equipment Sold "AS IS, WHERE IS": All equipment/property is sold "AS IS, WHERE IS" with no warranty or guarantees, expressed or implied, No operational assessments have been made by DPA Auctions on this item, it has been photographed ONLY.



### #16 - Running Gear (PZ0901)

Running Gear (PZ0901), 5th wheel running gear, 14L-16.1 flotation tires. Notes: Item Location: Alden, IA 50006 Equipment Sold "AS IS, WHERE IS": All equipment/property is sold "AS IS, WHERE IS" with no warranty or guarantees, expressed or implied, No operational assessments have been made by DPA Auctions on this item, it has been photographed ONLY.



### #17 - Running Gear (PZ0902)

Running Gear (PZ0902), 5th wheel running gear, 14L-16.1 flotation tires. Notes: Item Location: Alden, IA 50006 Equipment Sold "AS IS, WHERE IS": All equipment/property is sold "AS IS, WHERE IS" with no warranty or guarantees, expressed or implied, No operational assessments have been made by DPA Auctions on this item, it has been photographed ONLY.



### #18 - 1976 IHC 1066 Tractor (PZ0899, Unit 845)

1976 IHC 1066 Tractor (PZ0899, Unit 845), wide front, Turbo diesel engine, 4 speed Hi/Lo transmission, PTO, 2 port hydraulics, 3-point, 10.00-16SL front tires, 18.4-38 rear tires. Notes: Gears are bad, flat tire. Please contact seller for more information. Item Location: Aplington, IA 50604 Equipment Sold "AS IS, WHERE IS": All equipment/property is sold "AS IS, WHERE IS" with no warranty or guarantees, expressed or implied, No operational assessments have been made by DPA Auctions on this item, it has been photographed ONLY.



### #19 - 2009 John Deere 4930 Dry Machine (PZ0884, Unit 1063)

2009 John Deere 4930 Dry Machine (PZ0884, Unit 1063), John Deere diesel engine, hydrostatic transmission, air conditioning, heat, Am/Fm CD stereo, New Leader L3030 G4 - 11 stainless steel dry spreader box (S/N 128611), twin spinner, all hydraulic, New Leader MultApplier - 5 stainless steel insert (S/N 128541), Firestone 380/105R50 tires, StarFire iTC globe, John Deere monitor, approximately 4,863 hours. Notes: Item Location: Waukon, IA 52172 Equipment Sold "AS IS, WHERE IS": All equipment/property is sold "AS IS, WHERE IS" with no warranty or guarantees, expressed or implied, No operational assessments have been made by DPA Auctions on this item, it has been photographed ONLY.



### #20 - 2010 Ford Escape (PZ0898, Unit 323)

2010 Ford Escape (PZ0898, Unit 323), gas engine, automatic transmission, air conditioning, heat, Am/Fm CD stereo, cruise control, power windows & locks, P235/70R16 tires, shows 171,280 miles. Notes: This vehicle was in a deer accident. It is not driveable. I have knowledge that, prior to or during the time I owned the motor vehicle, it sustained damage for which the cost of repair exceeded 50% of the fair market value before it became damaged. Please contact seller for further information. Item Location: Aplington, IA 50604 Equipment Sold "AS IS, WHERE IS": All equipment/property is sold "AS IS, WHERE IS" with no warranty or guarantees, expressed or implied, No operational assessments have been made by DPA Auctions on this item, it has been photographed ONLY.



### #21 - 1997 International 4700 (DR1016 Unit TT570)

1997 International 4700 (DR1016 Unit TT570), DT466 diesel engine, automatic transmission, single axle, 18' wood deck flatbed, 1600 gallon crown poly liquid tank LEAKS, AM/FM CD radio, air conditioning, air brakes, 10.00-20 tires, shows 450,549 miles. Notes: Tank has a PATCHED LEAK in front right behind cab of truck. Hood has been refiberglassed as well. Item Location: Lenox, IA 50851 Equipment Sold "AS IS, WHERE IS": All equipment/property is sold "AS IS, WHERE IS" with no warranty or guarantees, expressed or implied, No operational assessments have been made by DPA Auctions on this item, it has been photographed ONLY.



### #22 - 1982 Chevy C60 (DR1017)

1982 Chevy C60 (DR1017), gas engine, 5 speed transmission, 2 speed rear end, single axle, 16' wood deck flatbed, 1600 gallon poly liquid tank, bottom sump, shows 10,192 miles. Notes: Truck has NO BATTERY. Miles are believed to be actual as this was a local fire department truck. Item Location: Clearfield, IA 50840 Equipment Sold "AS IS, WHERE IS": All equipment/property is sold "AS IS, WHERE IS" with no warranty or guarantees, expressed or implied, No operational assessments have been made by DPA Auctions on this item, it has been photographed ONLY.



### #23 - 1992 International 9400 (DR1018)

1992 International 9400 (DR1018), Cat diesel engine, 9 speed transmission, tandem axle full screw, air ride suspension, Jake brake, Willmar Load Runner 16 ton hydraulic stainless steel dry fertilizer tender box, rear auger NEEDS REPLACED, cruise control, dual aluminum fuel tanks, 22.5 tires, all aluminum wheels, shows 444,604 miles. Notes: Truck has NO BATTERIES. It ran when they parked it here. It was parked as the rear auger is TWISTED in TWO. Item Location: Clearfield, IA 50840 Equipment Sold "AS IS, WHERE IS": All equipment/property is sold "AS IS, WHERE IS" with no warranty or guarantees, expressed or implied, No operational assessments have been made by DPA Auctions on this item, it has been photographed ONLY.



---

### #24 - 1981 GMC Top Kick (DR1019)

1981 GMC Top Kick (DR1019), Cat diesel engine, automatic transmission, single axle, 1600 gallon poly liquid tank, 16' wood deck w/twin cylinder hoist, air brakes, 22.5 tires. Notes: Item Location: Clearfield, IA 50840 Equipment Sold "AS IS, WHERE IS": All equipment/property is sold "AS IS, WHERE IS" with no warranty or guarantees, expressed or implied, No operational assessments have been made by DPA Auctions on this item, it has been photographed ONLY.



---

### #25 - 1996 Terra Gator 1803 Cab Chassis Floater (PZ0918)

1996 Terra Gator 1803 Cab Chassis Floater (PZ0918), Cummins 8.3L diesel engine, automatic transmission, air conditioning, heat, Am/Fm CD stereo, PrimeX 66x43.00-25 tires, shows 9709 hours, 93,730 miles. Notes: Crack in glass. Item Location: Farragut, IA 51639 Equipment Sold "AS IS, WHERE IS": All equipment/property is sold "AS IS, WHERE IS" with no warranty or guarantees, expressed or implied, No operational assessments have been made by DPA Auctions on this item, it has been photographed ONLY.



---

### #26 - DMI Tool Bar (PZ0912)

DMI Tool Bar (PZ0912), DMI 3100 9 knife conversion tool bar, coulters, Raven Super Cooler, Dempster ground driven pump (no wheel), hydraulic wings, flotation tires, rear hitch. Notes: Please contact seller for working condition of tool bar. Item Location: Osceola, IA 50213 Equipment Sold "AS IS, WHERE IS": All equipment/property is sold "AS IS, WHERE IS" with no warranty or guarantees, expressed or implied, No operational assessments have been made by DPA Auctions on this item, it has been photographed ONLY.



---

### #27 - DMI 4100 Tool Bar (PZ0857, Unit 31198)

DMI 4100 Tool Bar (PZ0857, Unit 31198), DMI 4100 13 knife pull type tool bar, coulters, double disc sealers, Hiniker cooler, hydraulic wings, 12.5L-15 flotation tires, rear hitch. Notes: Item Location: Kansas, IL 61933 Equipment Sold "AS IS, WHERE IS": All equipment/property is sold "AS IS, WHERE IS" with no warranty or guarantees, expressed or implied, No operational assessments have been made by DPA Auctions on this item, it has been photographed ONLY.



---

### #28 - Blu Jet Tool Bar (PZ0858)

Blu Jet Tool Bar (PZ0858), Blu Jet 13 knife pull type tool bar, coulters, double disc sealers, Hiniker cooler, hydraulic wings, walking tandems, 11L-15 flotation tires, rear hitch. Notes: Item Location: Kansas, IL 61933 Equipment Sold "AS IS, WHERE IS": All equipment/property is sold "AS IS, WHERE IS" with no warranty or guarantees, expressed or implied, No operational assessments have been made by DPA Auctions on this item, it has been photographed ONLY.



---

### #29 - 2013 USC LPX2000 Seed Treater (PZ0612)

2013 USC LPX2000 Seed Treater (PZ0612), USC LPX2000 seed treater, USC seed wheel, USC chemical pump control panel, 2 poly chemical inductors, Ksi model 1208 32 conveyor, Ksi model 1208 16 conveyor, 2013 Brockhoff model 520FBGN gooseneck trailer, tandem axle, 7000 lb axles, GAWR 14000 lb, ST235/80R16 tires. Notes: Excellent Condition. Item Location: Marion, IL 62959 Equipment Sold "AS IS, WHERE IS": All equipment/property is sold "AS IS, WHERE IS" with no warranty or guarantees, expressed or implied, No operational assessments have been made by DPA Auctions on this item, it has been photographed ONLY.



---

### #30 - DMI 4250 Tool Bar (PZ0859)

DMI 4250 Tool Bar (PZ0859), DMI 4250 15 knife pull type tool bar, coulters, double disc sealers, Double Hiniker coolers, hydraulic wings, 12.5L-15 flotation tires, rear hitch. Notes: Item Location: Kansas, IL 61933 Equipment Sold "AS IS, WHERE IS": All equipment/property is sold "AS IS, WHERE IS" with no warranty or guarantees, expressed or implied, No operational assessments have been made by DPA Auctions on this item, it has been photographed ONLY.



---

### #31 - DMI 4250 Tool Bar (PZ0860, Unit 53693)

DMI 4250 Tool Bar (PZ0860, Unit 53693), DMI 4250 15 knife pull type tool bar, coulters, double disc sealers, Double Hiniker coolers, hydraulic wings, 12.5L-15 flotation tires, rear hitch. Notes: Item Location: Kansas, IL 61933 Equipment Sold "AS IS, WHERE IS": All equipment/property is sold "AS IS, WHERE IS" with no warranty or guarantees, expressed or implied, No operational assessments have been made by DPA Auctions on this item, it has been photographed ONLY.



---

### #32 - DMI 4300 Tool Bar (PZ0862)

DMI 4300 Tool Bar (PZ0862), DMI 4300 13 knife pull type tool bar, coulters, double disc sealers, Double Hiniker coolers, hydraulic wings, 12.5L-15 flotation tires, rear hitch. Notes: Item Location: Kansas, IL 61933 Equipment Sold "AS IS, WHERE IS": All equipment/property is sold "AS IS, WHERE IS" with no warranty or guarantees, expressed or implied, No operational assessments have been made by DPA Auctions on this item, it has been photographed ONLY.





### #33 - Progressive 1300 Tool Bar (PZ0863)

Progressive 1300 Tool Bar (PZ0863), Progressive 1300 15 knife pull type tool bar, coulters, double disc sealers, hydraulic wings, 12.5L-15 flotation tires, rear hitch. Notes: Item Location: Kansas, IL 61933 Equipment Sold "AS IS, WHERE IS": All equipment/property is sold "AS IS, WHERE IS" with no warranty or guarantees, expressed or implied, No operational assessments have been made by DPA Auctions on this item, it has been photographed ONLY.



### #34 - Pull Type Tool Bar (PZ0864)

Pull Type Tool Bar (PZ0864), 13 knife pull type tool bar, coulters, double disc sealers, Double Hiniker coolers, hydraulic wings, 12.5L-15 flotation tires, rear hitch. Notes: Item Location: Kansas, IL 61933 Equipment Sold "AS IS, WHERE IS": All equipment/property is sold "AS IS, WHERE IS" with no warranty or guarantees, expressed or implied, No operational assessments have been made by DPA Auctions on this item, it has been photographed ONLY.



### #35 - 2009 John Deere 4930 Dry Machine (PZ0897, Unit 1059)

2009 John Deere 4930 Dry Machine (PZ0897, Unit 1059), John Deere diesel engine, hydrostatic transmission, air conditioning, heat, Am/Fm CD stereo, New Leader L3030 G4 - 11 stainless steel dry spreader box (S/N 130503), twin spinner, all hydraulic, New Leader MultApplier - 5 stainless steel insert (S/N 130505), Good Year 620/70R46 flotation tires, StarFire iTC globe, John Deere monitor, shows 4759 hours. Notes: Item Location: West Union, IA 52175 Equipment Sold "AS IS, WHERE IS": All equipment/property is sold "AS IS, WHERE IS" with no warranty or guarantees, expressed or implied, No operational assessments have been made by DPA Auctions on this item, it has been photographed ONLY.



### #36 - Liquid Applicator (PZ0865)

Liquid Applicator (PZ0865), 700 gallon poly liquid applicator, 5 coulter injection, ground driven pump, 11L-15 flotation tires. Notes: Item Location: Kansas, IL 61933 Equipment Sold "AS IS, WHERE IS": All equipment/property is sold "AS IS, WHERE IS" with no warranty or guarantees, expressed or implied, No operational assessments have been made by DPA Auctions on this item, it has been photographed ONLY.



### #37 - Anhydrous Storage Tank (NP7725, West Tank)

Anhydrous Storage Tank (NP7725, West Tank), tank volume gauge, water weight capacity 91,844 lbs., no data plate. Notes: TANK ONLY. This item must be dismantled and removed by March 8, 2019, NO EXCEPTIONS. Dismantle, removal and transportation is at the expense, risk and liability of the buyer. Item Location: Tipton, KS 67485 Equipment Sold "AS IS, WHERE IS": All equipment/property is sold "AS IS, WHERE IS" with no warranty or guarantees, expressed or implied, No operational assessments have been made by DPA Auctions on this item, it has been photographed ONLY.



### #38 - 2014 B-B Dry Tender Trailer (PZ0852)

2014 B-B Dry Tender Trailer (PZ0852), 2014 B-B dry tender trailer, 16 ton stainless steel dry tender box, rear discharge auger, roll over tarp, tandem axle, 255/70R22.5 tires. Notes: PLEASE ALLOW AT LEAST 60 DAYS FOR TITLE TRANSFER. Item Location: Kansas, IL 61933 Equipment Sold "AS IS, WHERE IS": All equipment/property is sold "AS IS, WHERE IS" with no warranty or guarantees, expressed or implied, No operational assessments have been made by DPA Auctions on this item, it has been photographed ONLY.



### #39 - 2004 Sterling Truck (PZ0854, Unit 31351)

2004 Sterling Truck (PZ0854, Unit 31351), Detroit Series 60 diesel engine, 10 speed transmission, air conditioning, heat, Am/Fm cassette radio, cruise control, engine brake, tandem axle, full screw, air ride suspension, 5th wheel, 11R22.5 tires, aluminum rims, shows 617,382 miles. Notes: Engine is No good in this truck. Please contact seller for more information. PLEASE ALLOW AT LEAST 60 DAYS FOR TITLE TRANSFER. Item Location: Kansas, IL 61933 Equipment Sold "AS IS, WHERE IS": All equipment/property is sold "AS IS, WHERE IS" with no warranty or guarantees, expressed or implied, No operational assessments have been made by DPA Auctions on this item, it has been photographed ONLY.



### #40 - 1997 IHC 8100 Truck (PZ0855, Unit 40547)

1997 IHC 8100 Truck (PZ0855, Unit 40547), Cummins M11 Plus diesel engine, 9 speed transmission, air conditioning, heat, Am/Fm cassette radio, single axle, 5th wheel, wet kit, 11R22.5 tires, shows 381,605 miles. Notes: Very weak batteries. PLEASE ALLOW AT LEAST 60 DAYS FOR TITLE TRANSFER. Item Location: Kansas, IL 61933 Equipment Sold "AS IS, WHERE IS": All equipment/property is sold "AS IS, WHERE IS" with no warranty or guarantees, expressed or implied, No operational assessments have been made by DPA Auctions on this item, it has been photographed ONLY.



#### #41 - Komatsu Forklift (PZ0499, Unit 26050)

Komatsu Forklift (PZ0499, Unit 26050), Komatsu model FG25T-8 forklift, LP gas engine, shuttle shift transmission, canopy, lights, 7.00-12 front tires, 6.00-9 rear tires, shows 3749 hours. Notes: LP bottle NOT included. Item Location: Cambridge, IL 61238 Equipment Sold "AS IS, WHERE IS": All equipment/property is sold "AS IS, WHERE IS" with no warranty or guarantees, expressed or implied, No operational assessments have been made by DPA Auctions on this item, it has been photographed ONLY.



#### #42 - SuperB Grain Dryer (PZ0911)

SuperB Grain Dryer (PZ0911), SuperB energy miser model SA1000C continuous flow grain dryer. Notes: Item Location: Osceola, IA 50213 Equipment Sold "AS IS, WHERE IS": All equipment/property is sold "AS IS, WHERE IS" with no warranty or guarantees, expressed or implied, No operational assessments have been made by DPA Auctions on this item, it has been photographed ONLY.



#### #43 - JTI Sprayer Trailer (PZ0913)

JTI Sprayer Trailer (PZ0913), JTI single axle sprayer trailer, poly chemical inductor, 215/75R17.5 tires. Notes: NO TITLE. Item Location: Osceola, IA 50213 Equipment Sold "AS IS, WHERE IS": All equipment/property is sold "AS IS, WHERE IS" with no warranty or guarantees, expressed or implied, No operational assessments have been made by DPA Auctions on this item, it has been photographed ONLY.



#### #44 - 2012 RoGator 1100 Dry Machine (PZ0931)

2012 RoGator 1100 Dry Machine (PZ0931), 4WS, diesel engine, hydrostatic transmission, air conditioning, heat, Am/Fm radio, New Leader 4258 G4 dry spreader box, 258 cu. Ft. box, twin spinner, all hydraulic, manual tarp assembly, fabricated catwalk, 380/90R46 tires, Raven P300 receiver, Raven Viper Pro monitor, Raven SmarTrax, shows 4166 hours. Notes: Item Location: Goldsboro, NC 27530 Equipment Sold "AS IS, WHERE IS": All equipment/property is sold "AS IS, WHERE IS" with no warranty or guarantees, expressed or implied, No operational assessments have been made by DPA Auctions on this item, it has been photographed ONLY.



#### #45 - 2005 Freightliner Columbia Day Cab Truck (PZ0915, Unit ST626)

2005 Freightliner Columbia Day Cab Truck (PZ0915, Unit ST626), Detroit Series 60 diesel engine, Freightliner Smartshift with Eaton Fuller automatic transmission, air conditioning, heat, Am/Fm CD stereo, power windows & locks, cruise control, tandem axle, full screw, air ride suspension, Fontaine 5th wheel, grill guard, 11R22.5 tires, aluminum rims, shows 893,429 miles. Notes: Crack in windshield. Item Location: Afton, IA 50830 Equipment Sold "AS IS, WHERE IS": All equipment/property is sold "AS IS, WHERE IS" with no warranty or guarantees, expressed or implied, No operational assessments have been made by DPA Auctions on this item, it has been photographed ONLY.



#### #46 - 1999 Ford F350 XL Super Duty Flatbed (PZ0914, Unit P509)

1999 Ford F350 XL Super Duty Flatbed (PZ0914, Unit P509), 4x4, Triton V10 gas engine, manual transmission, air conditioning, heat, Am/Fm radio, running boards dually, 9' steel flatbed, headache rack, 5th wheel ball, LT235/8516 tires, shows 186,784 miles. Notes: Item Location: Afton, IA 50830 Equipment Sold "AS IS, WHERE IS": All equipment/property is sold "AS IS, WHERE IS" with no warranty or guarantees, expressed or implied, No operational assessments have been made by DPA Auctions on this item, it has been photographed ONLY.



#### #47 - 2003 Ford F250 XL Super Duty Pickup (PZ0916, Unit P423)

2003 Ford F250 XL Super Duty Pickup (PZ0916, Unit P423), 4x4, Triton 5.4L gas engine, 4 speed transmission with overdrive, air conditioning, heat, Am/Fm radio, running boards, grill guard, LT235/85R16 tires, shows 138,826 miles. Notes: Not road worthy. Please contact seller for more information. Tool Box NOT INCLUDED. Item Location: Afton, IA 50830 Equipment Sold "AS IS, WHERE IS": All equipment/property is sold "AS IS, WHERE IS" with no warranty or guarantees, expressed or implied, No operational assessments have been made by DPA Auctions on this item, it has been photographed ONLY.



#### #48 - 1990 Kenworth T600 Truck (PZ0917, Unit TT622)

1990 Kenworth T600 Truck (PZ0917, Unit TT622), Detroit Series 60 diesel engine, RT14609A transmission, air conditioning, heat, Am/Fm cassette radio, cruise control, engine brake, tandem axle, full screw, air ride suspension, 11R22.5 tires, rear fenders, show 152,648 miles (not actual). Notes: Item Location: Villisca, IA 50864 Equipment Sold "AS IS, WHERE IS": All equipment/property is sold "AS IS, WHERE IS" with no warranty or guarantees, expressed or implied, No operational assessments have been made by DPA Auctions on this item, it has been photographed ONLY.



### #49 - 2000 Peterbilt 379 Day Cab Truck (PZ0919, Unit FT474)

2000 Peterbilt 379 Day Cab Truck (PZ0919, Unit FT474), Cat C-12 diesel engine, 13 speed transmission, air conditioning, heat, Am/Fm CD stereo, power windows & locks, cruise control, engine brake, tandem axle, full screw, air ride suspension, 5th wheel, wet kit, 11R22.5 tires, aluminum rims, plastic fenders, approx. 1,500,000 miles. Notes: Please contact seller about miles on truck. The hydraulic pump WILL NOT SELL with this truck. Item Location: Red Oak, IA 51566 Equipment Sold "AS IS, WHERE IS": All equipment/property is sold "AS IS, WHERE IS" with no warranty or guarantees, expressed or implied, No operational assessments have been made by DPA Auctions on this item, it has been photographed ONLY.



### #50 - Anhydrous Storage Tank (NP7726, Middle Tank)

Anhydrous Storage Tank (NP7726, Middle Tank), tank volume gauge, no data plate. Notes: TANK ONLY. This item must be dismantled and removed by March 8, 2019, NO EXCEPTIONS. Dismantle, removal and transportation is at the expense, risk and liability of the buyer. Item Location: Tipton, KS 67485 Equipment Sold "AS IS, WHERE IS": All equipment/property is sold "AS IS, WHERE IS" with no warranty or guarantees, expressed or implied, No operational assessments have been made by DPA Auctions on this item, it has been photographed ONLY.



### #51 - 2014 Hagie STS 12 Sprayer (TR6172)

2014 Hagie STS 12 Sprayer (TR6172), diesel engine, hydrostatic transmission, Premium cab, heat, air conditioning, Am/Fm radio, regular light package, 100' boom, 20" spacing, 5-way nozzle bodies, foamer, all wheel steer, 320/90R50 tires @ 75%, Norac, Raven Viper Pro, shows 2,600 hours, maintenance records available upon request. Notes: Not included: Side kicks, Y-Drop. Item Location: Claremont, MN 55924 Equipment Sold "AS IS, WHERE IS": All equipment/property is sold "AS IS, WHERE IS" with no warranty or guarantees, expressed or implied, No operational assessments have been made by DPA Auctions on this item, it has been photographed ONLY.



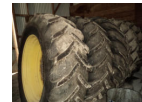
### #52 - 1992 IHC 9400 Truck (PZ7790, Unit 98714)

1992 IHC 9400 Truck (PZ7790, Unit 98714), Detroit series 60 diesel engine, Spicer SD-PS-9N transmission, air conditioning, heat, Am/Fm cassette radio, cruise control, engine brake, tandem axle, full screw, air ride suspension, 5th wheel, 11R22.5 front tires, 295/75R22.5 rear tires (Tires that are in pictures have been switch out), shows 722,722 miles. Notes: Engine has had a In Frame overhaul. Please contact seller for more information and paperwork. Tires that are in the pictures have been switched out, please call seller for more information. PLEASE ALLOW AT LEAST 60 DAYS FOR TITLE TRANSFER. Item Location: Gluek, MN 56260 Equipment Sold "AS IS, WHERE IS": All equipment/property is sold "AS IS, WHERE IS" with no warranty or guarantees, expressed or implied, No operational assessments have been made by DPA Auctions on this item, it has been photographed ONLY.



### #53 - Flotation Tires (PZ0886)

Flotation Tires (PZ0886), 4 - Good Year 620/70R46 flotation tires & rims. Notes: Item Location: Waukon, IA 52172 Equipment Sold "AS IS, WHERE IS": All equipment/property is sold "AS IS, WHERE IS" with no warranty or guarantees, expressed or implied, No operational assessments have been made by DPA Auctions on this item, it has been photographed ONLY.



### #54 - John Deere Liquid System (PZ0910)

John Deere Liquid System (PZ0910), John Deere 1200 gallon stainless steel liquid system, 120' boom, foam marker, poly foam marker tank, stainless steel chemical inductor. Notes: Item Location: West Union, IA 52175 Equipment Sold "AS IS, WHERE IS": All equipment/property is sold "AS IS, WHERE IS" with no warranty or guarantees, expressed or implied, No operational assessments have been made by DPA Auctions on this item, it has been photographed ONLY.



### #55 - 2011 John Deere 4930 Dry Machine (PZ0932)

2011 John Deere 4930 Dry Machine (PZ0932), John Deere diesel engine, hydrostatic transmission, air conditioning, heat, Delphi Am/Fm CD stereo, New Leader dry spreader box, twin spinner, all hydraulic, hydraulic tread adjustment, Firestone 380/105R50 tires, John Deere GreenStar 3 monitor, StarFire 3000 GPS, AutoTrac SF1, shows 3551 hours. Notes: Item Location: Goldsboro, NC 27530 Equipment Sold "AS IS, WHERE IS": All equipment/property is sold "AS IS, WHERE IS" with no warranty or guarantees, expressed or implied, No operational assessments have been made by DPA Auctions on this item, it has been photographed ONLY.



### #56 - 1977 Fruehauf Dry Tender Trailer (PZ7796, Unit 98710)

1977 Fruehauf Dry Tender Trailer (PZ7796, Unit 98710), 1977 Fruehauf dry tender trailer, tandem axle, spring suspension, Willmar 24 ton dry tender box (S/N 0062000274S), side discharge auger, roll over tarp, 11R22.5 tires. Notes: PLEASE ALLOW AT LEAST 60 DAYS FOR TITLE TRANSFER. Item Location: Gluek, MN 56260 Equipment Sold "AS IS, WHERE IS": All equipment/property is sold "AS IS, WHERE IS" with no warranty or guarantees, expressed or implied, No operational assessments have been made by DPA Auctions on this item, it has been photographed ONLY.



---

**#57 - 2000 Ford F250 Super Duty 4x4 Pickup (PZ7789, Unit 98709)**

2000 Ford F250 Super Duty 4x4 Pickup (PZ7789, Unit 98709), gas engine, automatic transmission, air conditioning, heat, Am/Fm radio, cruise control, LT235/85R16 tires, shows 229,428 miles. Notes: No end gate, weak batteries, pickup has issues. Please call seller for more information. PLEASE ALLOW AT LEAST 60 DAYS FOR TITLE TRANSFER. Item Location: Gluek, MN 56260 Equipment Sold "AS IS, WHERE IS": All equipment/property is sold "AS IS, WHERE IS" with no warranty or guarantees, expressed or implied, No operational assessments have been made by DPA Auctions on this item, it has been photographed ONLY.



---

**#57A - 2014 Unverferth GC-8250 Grain Cart (DL432)**

2014 Unverferth GC-8250 Grain Cart (DL432), 2014 Unverferth 8250 with tarp and scale, always shedded, always greased, 30.5-32 good tires, bought NEW in 2014, 1 owner cart. Notes: Auger has some scratches but no dents - still works well & seller can provide paint for scratches. Item Location: Glen Ullin, ND 58631 Equipment Sold "AS IS, WHERE IS": All equipment/property is sold "AS IS, WHERE IS" with no warranty or guarantees, expressed or implied, No operational assessments have been made by DPA Auctions on this item, it has been photographed ONLY.



---

**#58 - Wet Kit (PZ0926, Unit A)**

Wet Kit (PZ0926, Unit A), Wet kit, pump, NO pto. Notes: Item Location: Gluek, MN 56260 Equipment Sold "AS IS, WHERE IS": All equipment/property is sold "AS IS, WHERE IS" with no warranty or guarantees, expressed or implied, No operational assessments have been made by DPA Auctions on this item, it has been photographed ONLY.



---

**#59 - Wet Kit (PZ0927, Unit B)**

Wet Kit (PZ0927, Unit B), Wet kit, pump, NO pto. Notes: Item Location: Gluek, MN 56260 Equipment Sold "AS IS, WHERE IS": All equipment/property is sold "AS IS, WHERE IS" with no warranty or guarantees, expressed or implied, No operational assessments have been made by DPA Auctions on this item, it has been photographed ONLY.



---

**#60 - Wet Kit (PZ0928, Unit C)**

Wet Kit (PZ0928, Unit C), Wet kit, pump, NO pto. Notes: Item Location: Gluek, MN 56260 Equipment Sold "AS IS, WHERE IS": All equipment/property is sold "AS IS, WHERE IS" with no warranty or guarantees, expressed or implied, No operational assessments have been made by DPA Auctions on this item, it has been photographed ONLY.



---

**#61 - Wet Kit (PZ0929, Unit D)**

Wet Kit (PZ0929, Unit D), Wet kit, pump, NO pto. Notes: Item Location: Gluek, MN 56260 Equipment Sold "AS IS, WHERE IS": All equipment/property is sold "AS IS, WHERE IS" with no warranty or guarantees, expressed or implied, No operational assessments have been made by DPA Auctions on this item, it has been photographed ONLY.



---

**#62 - Wet Kit (PZ0930, Unit E)**

Wet Kit (PZ0930, Unit E), Wet kit, pump, NO pto. Notes: Item Location: Gluek, MN 56260 Equipment Sold "AS IS, WHERE IS": All equipment/property is sold "AS IS, WHERE IS" with no warranty or guarantees, expressed or implied, No operational assessments have been made by DPA Auctions on this item, it has been photographed ONLY.



---

**#63 - NH3 Applicator (PZ0924)**

NH3 Applicator (PZ0924), 500 gallon 5 knife NH3 applicator, flotation tires. Notes: Item Location: Charles City, IA 50616 Equipment Sold "AS IS, WHERE IS": All equipment/property is sold "AS IS, WHERE IS" with no warranty or guarantees, expressed or implied, No operational assessments have been made by DPA Auctions on this item, it has been photographed ONLY.





## #64 - Anhydrous Storage Tank (NP7727, East Tank)

Anhydrous Storage Tank (NP7727, East Tank), tank volume gauge, water weight capacity 91,924 lbs, 11,038 gallon capacity, no data plate. Notes: TANK ONLY. This item must be dismantled and removed by March 8, 2019, NO EXCEPTIONS. Dismantle, removal and transportation is at the expense, risk and liability of the buyer. Item Location: Tipton, KS 67485 Equipment Sold "AS IS, WHERE IS": All equipment/property is sold "AS IS, WHERE IS" with no warranty or guarantees, expressed or implied, No operational assessments have been made by DPA Auctions on this item, it has been photographed ONLY.



## #65 - 1987 CEI Pacer Feed Trailer (TR4000)

1987 CEI Pacer Feed Trailer (TR4000), Combination bag/bulk feed trailer, tandem axle, hard top, overhead auger, tandem axle, air brakes, spring ride suspension, 4 compartments. Notes: Item Location: Jackson, MO 63755 Equipment Sold "AS IS, WHERE IS": All equipment/property is sold "AS IS, WHERE IS" with no warranty or guarantees, expressed or implied, No operational assessments have been made by DPA Auctions on this item, it has been photographed ONLY.



## #66 - 2016 Ford F150 Crew Cab (PD1156)

2016 Ford F150 Crew Cab (PD1156), 2.7L Eco Boost Motor, am/fm/CD, good tires, 4x4, Lariat package, heated and cooled seats, 1 owner, shows 123,000 miles. Notes: Item Location: Sherburn, MN 56171 Equipment Sold "AS IS, WHERE IS": All equipment/property is sold "AS IS, WHERE IS" with no warranty or guarantees, expressed or implied, No operational assessments have been made by DPA Auctions on this item, it has been photographed ONLY.



## #67 - John Deere 60 Skid Steer (ME345)

John Deere 60 Skid Steer (ME345), 18HP gas engine, open cab, 44' bucket bucket, runs good, hour meter does not work but shows over 1000 hours. Notes: Hour meter does not work. Item Location: Emerson, IA 51533 Equipment Sold "AS IS, WHERE IS": All equipment/property is sold "AS IS, WHERE IS" with no warranty or guarantees, expressed or implied, No operational assessments have been made by DPA Auctions on this item, it has been photographed ONLY.



## #68 - 2014 John Deere 4940 Dry Machine (PZ0933)

2014 John Deere 4940 Dry Machine (PZ0933), John Deere diesel engine, hydrostatic transmission, air conditioning, heat, Delphi Am/Fm CD stereo, New Leader L3220 dry spreader box, 300 cu. Ft. bed, 2 product MultApplier box, twin spinner, all hydraulic, variable rate capability, hydraulic tread adjustment, Good Year 380/105R50 tires, John Deere GreenStar 3 monitor, StarFire iTC globe, AutoTrac SF1 steering, shows 5380 hours. Notes: Item Location: Goldsboro, NC 27530 Equipment Sold "AS IS, WHERE IS": All equipment/property is sold "AS IS, WHERE IS" with no warranty or guarantees, expressed or implied, No operational assessments have been made by DPA Auctions on this item, it has been photographed ONLY.



## #69 - 2008 Case IH 4420 (DR1062 Unit 13847)

2008 Case IH 4420 (DR1062 Unit 13847), diesel engine, hydrostatic drive, heat, air conditioning, Am/Fm radio, 1200 gallon stainless steel liquid system, 90' boom, foam markers, stainless steel chemical inductor, saddle mount rinse tank, Michelin 380/90R46 row crop tires, tires 65-75%, AIM Command, Raven SCS4600 controller for the flow and the AIM command, Raven Envizio monitor for the GPS control, integrated auto steer, shows 3,881 hours. Notes: Super clean sprayer. Item Location: Parkston, SD 57366 Equipment Sold "AS IS, WHERE IS": All equipment/property is sold "AS IS, WHERE IS" with no warranty or guarantees, expressed or implied, No operational assessments have been made by DPA Auctions on this item, it has been photographed ONLY.



## #70 - 1998 Chevy 3500 (DR1065)

1998 Chevy 3500 (DR1065), diesel engine, (engine is NON RUNNER), rebuilt automatic transmission, 12' Knapheide flatbed, side mounted tool boxes, cruise control, air conditioning. Notes: Crank is broke. Item Location: Barlow, KY 42024 Equipment Sold "AS IS, WHERE IS": All equipment/property is sold "AS IS, WHERE IS" with no warranty or guarantees, expressed or implied, No operational assessments have been made by DPA Auctions on this item, it has been photographed ONLY.



## #71 - USC Seed Hopper (DR1063)

USC Seed Hopper (DR1063), model 05070019 REV B hopper bootm seed hopper, manual crank gate, on stand. Notes: Very, very good condition. Item Location: Elk Point, SD 57025 Equipment Sold "AS IS, WHERE IS": All equipment/property is sold "AS IS, WHERE IS" with no warranty or guarantees, expressed or implied, No operational assessments have been made by DPA Auctions on this item, it has been photographed ONLY.



---

### #72 - 2018 Timpte Super Hopper Grain Trailer (NP7724, Unit 77910)

2018 Timpte Super Hopper Grain Trailer (NP7724, Unit 77910), 50' length, 72" sides, triple axle, air ride suspension, Thunder Creek 6000 electric roll tarp. Notes: This trailer has extensive damage and will be sold with a SALVAGE TITLE. Contact the seller for more details. Item Location: Milford, NE 68405 Equipment Sold "AS IS, WHERE IS": All equipment/property is sold "AS IS, WHERE IS" with no warranty or guarantees, expressed or implied, No operational assessments have been made by DPA Auctions on this item, it has been photographed ONLY.



---

### #73 - 2009 Volvo VNL64T630 Truck (NP7731)

2009 Volvo VNL64T630 Truck (NP7731), D16 diesel engine (535HP), 12 speed i-shift automatic transmission, heat, air conditioning, Am/Fm radio, air ride cab, Jake brake, tandem axle, air ride suspension, sliding 5th wheel plate, 22.5 tires, shows 707,000 miles. Notes: Item Location: Niota, IL 62358 Equipment Sold "AS IS, WHERE IS": All equipment/property is sold "AS IS, WHERE IS" with no warranty or guarantees, expressed or implied, No operational assessments have been made by DPA Auctions on this item, it has been photographed ONLY.



---

### #74 - Flotation Tires (PZ0935)

Flotation Tires (PZ0935), 4 - Good Year 620/70R46 flotation tires & rims (came off John Deere 4930 sprayer). Notes: Item Location: Goldsboro, NC 27530 Equipment Sold "AS IS, WHERE IS": All equipment/property is sold "AS IS, WHERE IS" with no warranty or guarantees, expressed or implied, No operational assessments have been made by DPA Auctions on this item, it has been photographed ONLY.



---

### #75 - 2015 Kenworth T880 Day Cab Truck (NP7723, Unit 77910)

2015 Kenworth T880 Day Cab Truck (NP7723, Unit 77910), Cummins ISX diesel engine, 10 speed manual transmission, tandem axle, air ride suspension, wet kit, dual fuel tanks, dual stacks, 5th wheel plate, shows 260,419 miles. Notes: This truck has extensive damage and will be sold with a SALVAGE TITLE. Contact the seller for more details. Item Location: Milford, NE 68405 Equipment Sold "AS IS, WHERE IS": All equipment/property is sold "AS IS, WHERE IS" with no warranty or guarantees, expressed or implied, No operational assessments have been made by DPA Auctions on this item, it has been photographed ONLY.



---

### #76 - Ray Man Floater Loader (PZ0939)

Ray Man Floater Loader (PZ0939), Ray Man lime conveyor, Kohler electric start gas engine, portable, P215/75R15 tires, 4" tear on belt but can be easily fixed. Notes: Item Location: Walcott, IA 52773 Equipment Sold "AS IS, WHERE IS": All equipment/property is sold "AS IS, WHERE IS" with no warranty or guarantees, expressed or implied, No operational assessments have been made by DPA Auctions on this item, it has been photographed ONLY.



---

### #77 - Utility Trailer (PZ0940)

Utility Trailer (PZ0940), Farmer hitch trailer, 70"x96" steel platform, 7-14.5 tubeless tires (need 1 tire), rear lights. NO Title. Notes: NO TITLE. Item Location: Walcott, IA 52773 Equipment Sold "AS IS, WHERE IS": All equipment/property is sold "AS IS, WHERE IS" with no warranty or guarantees, expressed or implied, No operational assessments have been made by DPA Auctions on this item, it has been photographed ONLY.



---

### #78 - Yetter Nh3 Sealers (DL425)

Yetter Nh3 Sealers (DL425), Yetter Nh3 sealers off of a DMI shank. Notes: Item Location: Donnellson, IA 52625 Equipment Sold "AS IS, WHERE IS": All equipment/property is sold "AS IS, WHERE IS" with no warranty or guarantees, expressed or implied, No operational assessments have been made by DPA Auctions on this item, it has been photographed ONLY.



---

### #79 - Flotation Tires (PZ0936)

Flotation Tires (PZ0936), 4 - Michelin 650/65R38 flotation tires & rims (came off CaseIH 4420 sprayer). Notes: Item Location: Goldsboro, NC 27530 Equipment Sold "AS IS, WHERE IS": All equipment/property is sold "AS IS, WHERE IS" with no warranty or guarantees, expressed or implied, No operational assessments have been made by DPA Auctions on this item, it has been photographed ONLY.



---

### #80 - Batco 2400 Pitstop (TH390)

Batco 2400 Pitstop (TH390), low clearance- 7.5", 8' x 12' easy dump platform, large 32" x 114" hopper, hydraulic lift on transport wheels, discharge height of 28 degrees, 27' overall length, electric on and off panel, 10HP electric motor. Notes: Item Location: Joliet, IL 60435 Equipment Sold "AS IS, WHERE IS": All equipment/property is sold "AS IS, WHERE IS" with no warranty or guarantees, expressed or implied, No operational assessments have been made by DPA Auctions on this item, it has been photographed ONLY.



### #81 - 2006 International 9400I Eagle (TH389)

2006 International 9400I Eagle (TH389), 450 Cummins diesel, 15 speed transmission, 22.5 tires, tandem axles, air ride suspension, shows 682,495 miles. Notes: Item Location: Joliet, IL 60435 Equipment Sold "AS IS, WHERE IS": All equipment/property is sold "AS IS, WHERE IS" with no warranty or guarantees, expressed or implied, No operational assessments have been made by DPA Auctions on this item, it has been photographed ONLY.



### #81A - 2009 John Deere 635F Flex Head (DL433)

2009 John Deere 635F Flex Head (DL433), 2009 John Deere 635F, new A-arm underneath the wobble box, new cutter bar, no dents in auger, cuts great, good on soybeans, comes with lock brackets for rigid cutting. Notes: Trailer shown in pictures DOES NOT SELL with this lot, it will sell separately on this auction. Item Location: Glen Ullin, ND 58631 Equipment Sold "AS IS, WHERE IS": All equipment/property is sold "AS IS, WHERE IS" with no warranty or guarantees, expressed or implied, No operational assessments have been made by DPA Auctions on this item, it has been photographed ONLY.



### #82 - Forsberg Gravity Table (TH387)

Forsberg Gravity Table (TH387). Excellent condition, we used on less than 200 bushels of specialty corn, before that small plot of popcorn. Notes: Item Location: Manson, IA 50563 Equipment Sold "AS IS, WHERE IS": All equipment/property is sold "AS IS, WHERE IS" with no warranty or guarantees, expressed or implied, No operational assessments have been made by DPA Auctions on this item, it has been photographed ONLY.



### #83 - Single Front Wheel Assembly (DL426)

Single Front Wheel Assembly (DL426), single front wheel assembly for a 2013 AGCO 4460 Spra-Coupe, came off a brand new stock unit & has never been used, Goodyear tire 10.00-16, 8 ply (100%). Notes: Item Location: Biglerville, PA 17307 Equipment Sold "AS IS, WHERE IS": All equipment/property is sold "AS IS, WHERE IS" with no warranty or guarantees, expressed or implied, No operational assessments have been made by DPA Auctions on this item, it has been photographed ONLY.



### #84 - 1999 Nissan UD 1800CS (ME328)

1999 Nissan UD 1800CS (ME328), 4.6L, 175HP diesel w/TRB, automatic transmission, AM/FM radio, 215/75R 17.5 tires, shows 296,772 miles, transmission S/N: 05JM0272P. Notes: Due to lack of buyer performance, this item is being relisted. Truck has not been operated for several years. Ignition issue known when last used was it would not turn off with the key, started good though. Item Location: Cameron, MO 64429 Equipment Sold "AS IS, WHERE IS": All equipment/property is sold "AS IS, WHERE IS" with no warranty or guarantees, expressed or implied, No operational assessments have been made by DPA Auctions on this item, it has been photographed ONLY.



### #85 - Flotation Tires (PZ0937)

Flotation Tires (PZ0937), 4 - Titan 24.5R32 flotation tires & rims (came off RoGator 1274C sprayer). Notes: Item Location: Goldsboro, NC 27530 Equipment Sold "AS IS, WHERE IS": All equipment/property is sold "AS IS, WHERE IS" with no warranty or guarantees, expressed or implied, No operational assessments have been made by DPA Auctions on this item, it has been photographed ONLY.



### #87 - 5 Freestanding Panels (ME354)

5 Freestanding Panels (ME354), TH Custom Manufacturing Freestanding Panels, full frame design built from 2-7/8" pipe, 24ft long by 5'9" tall, 7/8 rod ran through the uprights to prevent sharp edges, bent legs to prevent panel from sliding and to allow sturdy placement, saddle cuts on all uprights, drain holes on all uprights to prevent rusting from within the pipe, double chains standard on all panels. Notes: Shipping available anywhere in the U.S at additional charge. Item Location: Canistota, SD 57012 Equipment Sold "AS IS, WHERE IS": All equipment/property is sold "AS IS, WHERE IS" with no warranty or guarantees, expressed or implied, No operational assessments have been made by DPA Auctions on this item, it has been photographed ONLY.



### #88 - 5 Freestanding Panels (ME355)

5 Freestanding Panels (ME355), TH Custom Manufacturing Freestanding Panels, full frame design built from 2-7/8" pipe, 24ft long by 5'9" tall, 7/8 rod ran through the uprights to prevent sharp edges, bent legs to prevent panel from sliding and to allow sturdy placement, saddle cuts on all uprights, drain holes on all uprights to prevent rusting from within the pipe, double chains standard on all panels. Notes: Shipping available anywhere in the U.S at additional charge. Item Location: Canistota, SD 57012 Equipment Sold "AS IS, WHERE IS": All equipment/property is sold "AS IS, WHERE IS" with no warranty or guarantees, expressed or implied, No operational assessments have been made by DPA Auctions on this item, it has been photographed ONLY.



---

### #89 - 5 Freestanding Panels (ME356)

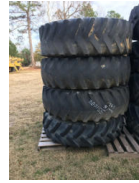
5 Freestanding Panels (ME356), TH Custom Manufacturing Freestanding Panels, full frame design built from 2-7/8" pipe, 24ft long by 5'9" tall, 7/8 rod ran through the uprights to prevent sharp edges, bent legs to prevent panel from sliding and to allow sturdy placement, saddle cuts on all uprights, drain holes on all uprights to prevent rusting from within the pipe, double chains standard on all panels. Notes: Shipping available anywhere in the U.S at additional charge. Item Location: Canistota, SD 57012 Equipment Sold "AS IS, WHERE IS": All equipment/property is sold "AS IS, WHERE IS" with no warranty or guarantees, expressed or implied, No operational assessments have been made by DPA Auctions on this item, it has been photographed ONLY.



---

### #90 - Flotation Tires (PZ0938)

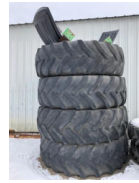
Flotation Tires (PZ0938), 4 - Firestone 20.8-38 flotation tires & rims (came off RoGator 1084SS sprayer). Notes: Item Location: Goldsboro, NC 27530 Equipment Sold "AS IS, WHERE IS": All equipment/property is sold "AS IS, WHERE IS" with no warranty or guarantees, expressed or implied, No operational assessments have been made by DPA Auctions on this item, it has been photographed ONLY.



---

### #91 - Flotation Tires (PZ0925)

Flotation Tires (PZ0925) 4 - 620/70R46 flotation tires & rims, fenders (came off John Deere 4930 sprayer). Notes: Item Location: Gluek, MN 56260 Equipment Sold "AS IS, WHERE IS": All equipment/property is sold "AS IS, WHERE IS" with no warranty or guarantees, expressed or implied, No operational assessments have been made by DPA Auctions on this item, it has been photographed ONLY.



---

### #92 - 2001 International 9200i (TH388)

2001 International 9200i (TH388), 12.7L Detroit 60 series, shows 734,900 miles. Notes: Just had a new clutch put in as well as a new wheel seal and has a lot of blowby. Also has pto but no wet kit pto. Item Location: Ewing, IL 62836 Equipment Sold "AS IS, WHERE IS": All equipment/property is sold "AS IS, WHERE IS" with no warranty or guarantees, expressed or implied, No operational assessments have been made by DPA Auctions on this item, it has been photographed ONLY.



---

### #93 - International 1486 (AL574)

International 1486 (AL574), runs and drives, dual hydraulic, front end is tight, decent sheet meal, has 3pt shifts, hours are unknown. Notes: Item Location: Sterling, IL 61081 Equipment Sold "AS IS, WHERE IS": All equipment/property is sold "AS IS, WHERE IS" with no warranty or guarantees, expressed or implied, No operational assessments have been made by DPA Auctions on this item, it has been photographed ONLY.



---

### #96 - B&B Header Trailer (DL434)

B&B Header Trailer (DL434), 35' header trailer, year unknown, hardly used, works great and pulls nice, working lights, good tires. Notes: John Deere Header shown in pictures DOES NOT SELL with this lot, it is the HEADER TRAILER ONLY. Item Location: Glen Ullin, ND 58631 Equipment Sold "AS IS, WHERE IS": All equipment/property is sold "AS IS, WHERE IS" with no warranty or guarantees, expressed or implied, No operational assessments have been made by DPA Auctions on this item, it has been photographed ONLY.

