

Auction catalog

Title	Online Auction - November 20, 2018 10AM Central
Description	The following line of Fertilizer, Farm Implement, Truck, Trailer & Construction Equipment will be sold online with the bidding ending on November 20, 2018. Location of the equipment is given. Bidding within the last minute before the closing of a lot will extend the bidding time by an additional minute. Be prepared to bid accordingly. For more information, contact Del Peterson & Associates: 419 West Judy Drive Fremont NE, 68025 Phone: 800-492-9090 or 402-721-4388 Fax: 402-721-4583 E-mail: auction@delpeterson.com
Date	Tue, Nov 20, 2018
Starts at	10:00 AM
Address	PO Box 654, Fremont, NE 68026 USA
Categories	

#1 - Fimco 3-Point Sprayer (PZ0447)

Fimco 3-Point Sprayer (PZ0447), Fimco 110 gallon poly liquid system, manual fold out booms, hose with hand held wand. Notes: Item Location: South Roxana, IL 62087 Equipment Sold "AS IS, WHERE IS": All equipment/property is sold "AS IS, WHERE IS" with no warranty or guarantees, expressed or implied, No operational assessments have been made by DPA Auctions on this item, it has been photographed ONLY.



#2 - Farm Star 3-Point Mower (PZ0448)

Farm Star 3-Point Mower (PZ0448), Farm Star model SRTC-405A 3-point mower, PTO. Notes: Item Location: South Roxana, IL 62087 Equipment Sold "AS IS, WHERE IS": All equipment/property is sold "AS IS, WHERE IS" with no warranty or guarantees, expressed or implied, No operational assessments have been made by DPA Auctions on this item, it has been photographed ONLY.



#3 - 1978 Air Compressor (PZ0446)

1978 Air Compressor (PZ0446), 1978 Air compressor, Kohler 10 hp gas engine, compressor, tank. Notes: Item Location: South Roxana, IL 62087 Equipment Sold "AS IS, WHERE IS": All equipment/property is sold "AS IS, WHERE IS" with no warranty or guarantees, expressed or implied, No operational assessments have been made by DPA Auctions on this item, it has been photographed ONLY.



#4 - NH3 Equaply (PZ0470)

NH3 Equaply (PZ0470), NH3 equaply, Hypro pump. Notes: Item Location: Flora, IL 62839 Equipment Sold "AS IS, WHERE IS": All equipment/property is sold "AS IS, WHERE IS" with no warranty or guarantees, expressed or implied, No operational assessments have been made by DPA Auctions on this item, it has been photographed ONLY.



#5 - Brute II Bumper (DR0441)

Brute II Bumper (DR0441), chrome ag bumper. Notes: Item Location: Parker, SD 57053 Equipment Sold "AS IS, WHERE IS": All equipment/property is sold "AS IS, WHERE IS" with no warranty or guarantees, expressed or implied, No operational assessments have been made by DPA Auctions on this item, it has been photographed ONLY.



#6 - B&W Hitch (DR0442)

B&W Hitch (DR0442), 5th wheel hide-a-ball hitch. Notes: Item Location: Parker, SD 57053 Equipment Sold "AS IS, WHERE IS": All equipment/property is sold "AS IS, WHERE IS" with no warranty or guarantees, expressed or implied, No operational assessments have been made by DPA Auctions on this item, it has been photographed ONLY.



#7 - Hydraulic Drive (ED697)

Hydraulic Drive (ED697), Eaton Vickers Model MCD-5291 AA43716A. Notes: Item Location: Frankfort, IN 46041 Equipment Sold "AS IS, WHERE IS": All equipment/property is sold "AS IS, WHERE IS" with no warranty or guarantees, expressed or implied, No operational assessments have been made by DPA Auctions on this item, it has been photographed ONLY.



#8 - Hydraulic Drive (ED696)

Hydraulic Drive (ED696), Eaton Vickers Model # MCD-5291 AA43716A. Notes: Item Location: Frankfort, IN 46041 Equipment Sold "AS IS, WHERE IS": All equipment/property is sold "AS IS, WHERE IS" with no warranty or guarantees, expressed or implied, No operational assessments have been made by DPA Auctions on this item, it has been photographed ONLY.



#9 - Fuel Tank (PZ0591)

Fuel Tank (PZ0591), 80 gallon aluminum fuel tank. Notes: Never been used. Item Location: Waterloo, IA 50703 Equipment Sold "AS IS, WHERE IS": All equipment/property is sold "AS IS, WHERE IS" with no warranty or guarantees, expressed or implied, No operational assessments have been made by DPA Auctions on this item, it has been photographed ONLY.



#10 - Fuel Tank (PZ0599)

Fuel Tank (PZ0599), 80 gallon aluminum fuel tank. Notes: Never been used. Item Location: Waterloo, IA 50703 Equipment Sold "AS IS, WHERE IS": All equipment/property is sold "AS IS, WHERE IS" with no warranty or guarantees, expressed or implied, No operational assessments have been made by DPA Auctions on this item, it has been photographed ONLY.



#11 - Spencer Flatbed Semi Trailer (NP7447)

Spencer Flatbed Semi Trailer (NP7447), 24' 6" main deck, 8' 10" lower deck, trailer 8' wide, wood deck, single axle, spring suspension, brakes operable, tires in fair condition, trailer was last used to transport chemical mini tanks to crop sprayer in fields, with mixing area on lower back deck, trailer pulled fine to these short hauls. Notes: NO TITLE. Front dolly shown in pictures DOES NOT SELL with this trailer. Item Location: Rock Port, MO 64482 Equipment Sold "AS IS, WHERE IS": All equipment/property is sold "AS IS, WHERE IS" with no warranty or guarantees, expressed or implied, No operational assessments have been made by DPA Auctions on this item, it has been photographed ONLY.



#12 - 2007 Big Joe Walkie Stacker (PD976)

2007 Big Joe Walkie Stacker (PD976), model PDI 24-T8, 2 stage mast of 72 inches to 96 inches, 1 way hydraulic control valve, 24 volt electric, outriggers, unit is dent free, paint good, good shape, batteries hold charge, drive and load wheels in good shape, everything works and operates as it should. Notes: Item Location: Saint Louis, MO 63132 Equipment Sold "AS IS, WHERE IS": All equipment/property is sold "AS IS, WHERE IS" with no warranty or guarantees, expressed or implied, No operational assessments have been made by DPA Auctions on this item, it has been photographed ONLY.



#13 - Big Joe Walkie Stacker (PD975)

Big Joe Walkie Stacker (PD975), model PDM 25-154, 2 stage mast 95 inches to 154 inches, outriggers are 40 inches inside and 48 inches outside, 12 volt electric, hydraulic system works and operates as it should. Notes: Item Location: Saint Louis, MO 63132 Equipment Sold "AS IS, WHERE IS": All equipment/property is sold "AS IS, WHERE IS" with no warranty or guarantees, expressed or implied, No operational assessments have been made by DPA Auctions on this item, it has been photographed ONLY.



#14 - Clipper X298D Mobile Seed Cleaner (KMK593)

Clipper X298D Mobile Seed Cleaner (KMK593), four screen seed cleaner, top and bottom air, speed control on bottom fan, upgraded to ball trays, standard hp 3 phase electric motor, 35 standard size screens, screens from fine grass seed to large corn size, 2002 homemade trailer, tandem axle. Notes: Used at our facility only. Mounted on trailer for ease of access. Item Location: Hazen, AR 72064 Equipment Sold "AS IS, WHERE IS": All equipment/property is sold "AS IS, WHERE IS" with no warranty or guarantees, expressed or implied, No operational assessments have been made by DPA Auctions on this item, it has been photographed ONLY.



#15 - LMC Mobile Gravity Table (KMK594)

LMC Mobile Gravity Table (KMK594), Lewis M. Carter mfg., model no. 641, 3 phase electric motor, tachometer, tandem axle trailer. Notes: Trailer has no title. Used at our facility only. Item Location: Hazen, AR 72064 Equipment Sold "AS IS, WHERE IS": All equipment/property is sold "AS IS, WHERE IS" with no warranty or guarantees, expressed or implied, No operational assessments have been made by DPA Auctions on this item, it has been photographed ONLY.



#16 - 2012 Aulick 48' Belt Trailer (KMK661)

2012 Aulick 48' Belt Trailer (KMK661), AULuminator, aluminum composition, 48' long, 66" high sides, 54" belt, model 4866543, triple axle, rear lift steerable axle, air ride suspension, electric over hydraulic remote, 4500 Series HD electric tarp, poly lined floor and side walls, self contained wet kit with Kohler command pro 23 hp. gas motor, can be used with tractor supplied wet kits and hot switch also, all aluminum wheels, full mud flaps, 11 R 22.5 tires, unit number 12-196. Notes: Item Location: Wallace, NE 69169 Equipment Sold "AS IS, WHERE IS": All equipment/property is sold "AS IS, WHERE IS" with no warranty or guarantees, expressed or implied, No operational assessments have been made by DPA Auctions on this item, it has been photographed ONLY.



#17 - 2008 Chevrolet Colorado (KMK629)

2008 Chevrolet Colorado (KMK629), 4 cylinder gas engine, automatic transmission, 2 x 4, am/fm radio, heat and air conditioning. Notes: Item Location: Sioux City, IA 51105 Equipment Sold "AS IS, WHERE IS": All equipment/property is sold "AS IS, WHERE IS" with no warranty or guarantees, expressed or implied, No operational assessments have been made by DPA Auctions on this item, it has been photographed ONLY.



#18 - 1998 Terra Gator 8103 Combo Floater (PZ0437, Unit 35954)

1998 Terra Gator 8103 Combo Floater (PZ0437, Unit 35954), John Deere diesel engine (S/N RG6081H034397), Terra Shift transmission, air conditioning, heat, Am/Fm radio, New Leader L3030 G4 - 13 stainless steel dry spreader box (S/N 124723), twin spinner, all hydraulic, with Ag Chem 1800 gallon stainless steel liquid system (S/N L181263), 80' boom, foam marker, stainless steel foam marker tank, Good Year 1000/50R25 front tire, Michelin Mega Bib 1000/50R25 rear tires, Ag Leader monitor, approx. 13,000 miles, 148,202 miles. Notes: Running gear NOT included. Item Location: Eldon, IA 52554 Equipment Sold "AS IS, WHERE IS": All equipment/property is sold "AS IS, WHERE IS" with no warranty or guarantees, expressed or implied, No operational assessments have been made by DPA Auctions on this item, it has been photographed ONLY.



#19 - DMI Tool Bar (PZ0471, Unit 53293)

DMI Tool Bar (PZ0471, Unit 53293), DMI 3300 13 knife pull type tool bar, coulters, Raven Super cooler, hydraulic wings, flotation tires, rear hitch. Notes: Item Location: Flora, IL 62839 Equipment Sold "AS IS, WHERE IS": All equipment/property is sold "AS IS, WHERE IS" with no warranty or guarantees, expressed or implied, No operational assessments have been made by DPA Auctions on this item, it has been photographed ONLY.



#20 - Cat Forklift (PZ0468)

Cat Forklift (PZ0468), Cat model V40B forklift, LP gas engine, shuttle shift transmission, 7.00-12 front tires, 6.50-10 rear tires. Notes: LP bottle NOT included. Item Location: Flora, IL 62839 Equipment Sold "AS IS, WHERE IS": All equipment/property is sold "AS IS, WHERE IS" with no warranty or guarantees, expressed or implied, No operational assessments have been made by DPA Auctions on this item, it has been photographed ONLY.



#21 - Case 430 Skid Steer (PZ0469, Unit 40660)

Case 430 Skid Steer (PZ0469, Unit 40660), Case 430 skid steer, diesel engine, hydrostatic transmission, canopy, lights, bucket, 12x16.5 tires. Notes: Item Location: Flora, IL 62839 Equipment Sold "AS IS, WHERE IS": All equipment/property is sold "AS IS, WHERE IS" with no warranty or guarantees, expressed or implied, No operational assessments have been made by DPA Auctions on this item, it has been photographed ONLY.



#22 - 1987 Mack Truck (PZ0466, Unit 70460)

1987 Mack Truck (PZ0466, Unit 70460), Mack diesel engine, Maxitorque extended range transmission, heat, tandem axle, full screw, 11R22.5 tires, shows 248,972 miles. Notes: PLEASE ALLOW AT LEAST 60 DAYS FOR TITLE TRANSFER. Item Location: Flora, IL 62839 Equipment Sold "AS IS, WHERE IS": All equipment/property is sold "AS IS, WHERE IS" with no warranty or guarantees, expressed or implied, No operational assessments have been made by DPA Auctions on this item, it has been photographed ONLY.



#23 - 2013 Dodge Ram 1500 Crew Cab Pickup (PZ0472, Unit 79524)

2013 Dodge Ram 1500 Crew Cab Pickup (PZ0472, Unit 79524), 4x4, Hemi 5.7L V8 gas engine, automatic transmission, air conditioning, heat, Am/Fm CD stereo, cruise control, power windows & locks, rear power window, P265/70R17 tires, shows 217,599 miles. Notes: PLEASE ALLOW AT LEAST 60 DAYS FOR TITLE TRANSFER. Item Location: Flora, IL 62839 Equipment Sold "AS IS, WHERE IS": All equipment/property is sold "AS IS, WHERE IS" with no warranty or guarantees, expressed or implied, No operational assessments have been made by DPA Auctions on this item, it has been photographed ONLY.



#24 - 2013 Dodge Ram 1500 Crew Cab Pickup (PZ0473, Unit 79505)

2013 Dodge Ram 1500 Crew Cab Pickup (PZ0473, Unit 79505), 4x4, Hemi 5.7L V8 gas engine, automatic transmission, air conditioning, heat, Am/Fm CD stereo, cruise control, power windows & locks, rear power window, P265/70R17 tires, shows 189,356 miles. Notes: Crack in glass. PLEASE ALLOW AT LEAST 60 DAYS FOR TITLE TRANSFER. Item Location: Flora, IL 62839 Equipment Sold "AS IS, WHERE IS": All equipment/property is sold "AS IS, WHERE IS" with no warranty or guarantees, expressed or implied, No operational assessments have been made by DPA Auctions on this item, it has been photographed ONLY.



#25 - Left & Right Chevy Pickup Doors (NP7490)

Left & Right Chevy Pickup Doors (NP7490), for 1973-1980 Chevy Pickup, damaged in shipping ,these doors are NEW. Notes: Item Location: Coal Valley, IL 61240 Equipment Sold "AS IS, WHERE IS": All equipment/property is sold "AS IS, WHERE IS" with no warranty or guarantees, expressed or implied, No operational assessments have been made by DPA Auctions on this item, it has been photographed ONLY.



#26 - (2) Saddle Box Aluminum Truck Boxes (NP7491)

(2) Saddle Box Aluminum Truck Boxes (NP7491), 24" wide, NO KEYS. Notes: Item Location: Coal Valley, IL 61240 Equipment Sold "AS IS, WHERE IS": All equipment/property is sold "AS IS, WHERE IS" with no warranty or guarantees, expressed or implied, No operational assessments have been made by DPA Auctions on this item, it has been photographed ONLY.



#27 - Steel Flatbed (PZ0467)

Steel Flatbed (PZ0467), Steel flatbed, approx. 11', headache rack, 5th wheel ball, lights. Notes: Item Location: Flora, IL 62839 Equipment Sold "AS IS, WHERE IS": All equipment/property is sold "AS IS, WHERE IS" with no warranty or guarantees, expressed or implied, No operational assessments have been made by DPA Auctions on this item, it has been photographed ONLY.



#28 - 2005 CaseIH FLX4010 Dry Floater (PZ0439, Unit 35394)

2005 CaseIH FLX4010 Dry Floater (PZ0439, Unit 35394), Cummins diesel engine, Allison automatic transmission, air conditioning, heat, Am/Fm cassette radio, New Leader L3020 G4 - 13 stainless steel dry spreader box (S/N 121139), twin spinner, all hydraulic, Good Year & PrimeX 48x31.00R20 front tires, Alliance 1000/50R25 rear tires, Raven SCS4000 monitor, Raven monitor, lightbar, shows 5168 hours. Notes: Item Location: Eldon, IA 52554 Equipment Sold "AS IS, WHERE IS": All equipment/property is sold "AS IS, WHERE IS" with no warranty or guarantees, expressed or implied, No operational assessments have been made by DPA Auctions on this item, it has been photographed ONLY.



#29 - NH3 Tool Bar (PZ0477)

NH3 Tool Bar (PZ0477), 13 knife pull type tool bar, coulters, GDI 200 ground driven pump, hydraulic wings, 11L-15 flotation tires, rear hitch. Notes: Parts missing. Item Location: Neoga, IL 62447 Equipment Sold "AS IS, WHERE IS": All equipment/property is sold "AS IS, WHERE IS" with no warranty or guarantees, expressed or implied, No operational assessments have been made by DPA Auctions on this item, it has been photographed ONLY.



#30 - NH3 Conversion Tool Bar (PZ0478)

NH3 Conversion Tool Bar (PZ0478), 11 knife conversion tool bar, coulters, GDI 200 ground driven pump, hydraulic wings, 11L-15 flotation tires, rear hitch. Notes: Parts missing. Item Location: Neoga, IL 62447 Equipment Sold "AS IS, WHERE IS": All equipment/property is sold "AS IS, WHERE IS" with no warranty or guarantees, expressed or implied, No operational assessments have been made by DPA Auctions on this item, it has been photographed ONLY.



#31 - NH3 3-Point Tool Bar (PZ0479)

NH3 3-Point Tool Bar (PZ0479), 9 knife 3-point tool bar, single disc sealers, hydraulic wings, tow bar, rear hitch. Notes: Parts missing. Item Location: Neoga, IL 62447 Equipment Sold "AS IS, WHERE IS": All equipment/property is sold "AS IS, WHERE IS" with no warranty or guarantees, expressed or implied, No operational assessments have been made by DPA Auctions on this item, it has been photographed ONLY.



#32 - NH3 3-Point Tool Bar (PZ0480)

NH3 3-Point Tool Bar (PZ0480), 9 knife 3-point tool bar, single disc sealers, hydraulic wings, tow bar, P185/75R14 tires, rear hitch. Notes: Parts missing. Item Location: Neoga, IL 62447 Equipment Sold "AS IS, WHERE IS": All equipment/property is sold "AS IS, WHERE IS" with no warranty or guarantees, expressed or implied, No operational assessments have been made by DPA Auctions on this item, it has been photographed ONLY.



#33 - NH3 Tool Bar (PZ0481)

NH3 Tool Bar (PZ0481), 13 knife pull type tool bar, coulters, double disc sealers, GDI 200 ground driven pump, hydraulic wings, walking tandems, 11L-15 flotation tires, rear hitch. Notes: Item Location: Neoga, IL 62447 Equipment Sold "AS IS, WHERE IS": All equipment/property is sold "AS IS, WHERE IS" with no warranty or guarantees, expressed or implied, No operational assessments have been made by DPA Auctions on this item, it has been photographed ONLY.



#34 - Layco Stainless Steel Fertilizer Leg (PZ0476)

Layco Stainless Steel Fertilizer Leg (PZ0476), approx. 30' height, poly cups, single downspout, with drag conveyor (runs the length of the fertilizer building), electric motor. Notes: This item must be removed by December 31st, 2018 with NO exceptions. Dismantle, removal and transportation is at the expense, risk and liability of the buyer. Item Location: Neoga, IL 62447 Equipment Sold "AS IS, WHERE IS": All equipment/property is sold "AS IS, WHERE IS" with no warranty or guarantees, expressed or implied, No operational assessments have been made by DPA Auctions on this item, it has been photographed ONLY.



#35 - NH3 Storage Tank (PZ0504)

NH3 Storage Tank (PZ0504), 26,000 gallon NH3 storage tank, Master tank volume gauge, valves, no data plate. Notes: This NH3 tank must be removed by February 28th, 2019 with NO exceptions. Dismantle, removal and transportation is at the expense, risk and liability of the buyer. Item Location: Cambridge, IL 61238 Equipment Sold "AS IS, WHERE IS": All equipment/property is sold "AS IS, WHERE IS" with no warranty or guarantees, expressed or implied, No operational assessments have been made by DPA Auctions on this item, it has been photographed ONLY.



#36 - 2003 CaseIH FLX3300B Liquid Floater (PZ0442, Unit 35616)

2003 CaseIH FLX3300B Liquid Floater (PZ0442, Unit 35616), diesel engine, Allison automatic transmission, air conditioning, heat, Am/Fm CD stereo, 1800 gallon stainless steel liquid system, 60/80' boom, foam marker, stainless steel foam marker tank, top poly rinse tank, stainless steel chemical inductor, Good Year 1000/50R25 front tire, Michelin 1000/50R25 rear tires, Raven SCS660 monitor, shows 6598 hours, 82,300 miles. Notes: Item Location: Eldon, IA 52554 Equipment Sold "AS IS, WHERE IS": All equipment/property is sold "AS IS, WHERE IS" with no warranty or guarantees, expressed or implied, No operational assessments have been made by DPA Auctions on this item, it has been photographed ONLY.



#37 - 2015 Neville Built Dry Tender Trailer (NP7271)

2015 Neville Built Dry Tender Trailer (NP7271), Willmar Side Shooter 24 dry tender box (S/N AG3W24SS0EV001048), 6 compartment, side discharge auger, electric roll tarp, all hydraulic, Isuzu diesel engine, shows 188 hours, 2015 Neville Built trailer, tandem axle, spring suspension, GVWR 68,000lbs. Notes: Very clean unit. Item Location: Garnett, KS 66032 Equipment Sold "AS IS, WHERE IS": All equipment/property is sold "AS IS, WHERE IS" with no warranty or guarantees, expressed or implied, No operational assessments have been made by DPA Auctions on this item, it has been photographed ONLY.



#38 - Hyster H50XL Forklift (NP7431)

Hyster H50XL Forklift (NP7431), LP gas, shuttle shift, side shift, 3 stage mast, forks, 5,000lb capacity, 7.00-15 front tires, 6.00-9 rear tires, shows 1,752 hours (seller believes hour meter has been turned over), truck weight 8,400lbs. Notes: Item Location: Fairview, KS 66425 Equipment Sold "AS IS, WHERE IS": All equipment/property is sold "AS IS, WHERE IS" with no warranty or guarantees, expressed or implied, No operational assessments have been made by DPA Auctions on this item, it has been photographed ONLY.



#39 - Adams Undercar Conveyor (PZ0500)

Adams Undercar Conveyor (PZ0500), Adams stainless steel undercar conveyor, 7.5 hp electric motor, control box, portable. Notes: Item Location: Cambridge, IL 61238 Equipment Sold "AS IS, WHERE IS": All equipment/property is sold "AS IS, WHERE IS" with no warranty or guarantees, expressed or implied, No operational assessments have been made by DPA Auctions on this item, it has been photographed ONLY.



#40 - Layco Vertical Blender (PZ0501)

Layco Vertical Blender (PZ0501), Layco 8 ton stainless steel vertical blender, stainless steel hopper, approx. 30' stainless steel loadout conveyor (NO motor), 420HE digital readout. Notes: No motor on conveyor. This blender must be removed by February 28th, 2019 with NO exceptions. Dismantle, removal and transportation is at the expense, risk and liability of the buyer. Item Location: Cambridge, IL 61238 Equipment Sold "AS IS, WHERE IS": All equipment/property is sold "AS IS, WHERE IS" with no warranty or guarantees, expressed or implied, No operational assessments have been made by DPA Auctions on this item, it has been photographed ONLY.



#40A - 2008 Yukon Hybrid (TR6054)

2008 Yukon Hybrid (TR6054), 2 Mode gas/electric engine, AM/FM CD player, DVD player/headphones/remote, 3rd row seating, leather interior, Touchscreen, sun roof, 265/65R18 tires, Rear radio/climate control, power windows/locks/mirrors/seats, 229,024 miles. Notes: Item Location: Fremont, NE 68025 Equipment Sold "AS IS, WHERE IS": All equipment/property is sold "AS IS, WHERE IS" with no warranty or guarantees, expressed or implied, No operational assessments have been made by DPA Auctions on this item, it has been photographed ONLY.



#41 - Doyle Conveyor (PZ0503)

Doyle Conveyor (PZ0503), Doyle approx. 45' stainless steel conveyor, Toshiba 10 hp electric motor, control box, portable. Notes: Item Location: Cambridge, IL 61238 Equipment Sold "AS IS, WHERE IS": All equipment/property is sold "AS IS, WHERE IS" with no warranty or guarantees, expressed or implied, No operational assessments have been made by DPA Auctions on this item, it has been photographed ONLY.



#42 - 2016 Ford F-250 Super Duty Lariat 4x4 Pickup (CP543)

2016 Ford F-250 Super Duty Lariat 4x4 Pickup (CP543), crew cab, 5.7L Power Stroke Turbo diesel engine, automatic transmission, heat, air conditioning, Am/Fm Satellite radio, bluetooth, full touch screen display, dual power leather seats, power windows, locks and mirrors, leather interior, full locking hubs, air bag suspension w/ built in air compressor, remote with memory key, running boards, Michelin tires, Rhino bed liner, shows 41,679 miles. Notes: Item Location: Neligh, NE 68756 Equipment Sold "AS IS, WHERE IS": All equipment/property is sold "AS IS, WHERE IS" with no warranty or guarantees, expressed or implied, No operational assessments have been made by DPA Auctions on this item, it has been photographed ONLY.



#44 - Mitsubishi Forklift (PZ0482)

Mitsubishi Forklift (PZ0482), Mitsubishi 25 forklift, LP gas engine, shuttle shift transmission, canopy, lights, side shift, 7.00-12 front tires, 6.90/6.00-9 rear tires, shows 4729 hours. Notes: LP bottle NOT included. Item Location: Oneida, IL 61467 Equipment Sold "AS IS, WHERE IS": All equipment/property is sold "AS IS, WHERE IS" with no warranty or guarantees, expressed or implied, No operational assessments have been made by DPA Auctions on this item, it has been photographed ONLY.



#45 - Komatsu Forklift (PZ0499, Unit 26050)

Komatsu Forklift (PZ0499, Unit 26050), Komatsu model FG25T-8 forklift, LP gas engine, shuttle shift transmission, canopy, lights, 7.00-12 front tires, 6.00-9 rear tires, shows 3749 hours. Notes: LP bottle NOT included. Item Location: Cambridge, IL 61238 Equipment Sold "AS IS, WHERE IS": All equipment/property is sold "AS IS, WHERE IS" with no warranty or guarantees, expressed or implied, No operational assessments have been made by DPA Auctions on this item, it has been photographed ONLY.



#46 - NH3 Storage Tank (PZ0518)

NH3 Storage Tank (PZ0518), 12,000 gallon NH3 storage tank, Magnetel tank volume gauge, no data plate. Notes: This NH3 tank must be removed by February 28th, 2019 with NO exceptions. Dismantle, removal and transportation is at the expense, risk and liability of the buyer. Item Location: Durant, IA 52747 Equipment Sold "AS IS, WHERE IS": All equipment/property is sold "AS IS, WHERE IS" with no warranty or guarantees, expressed or implied, No operational assessments have been made by DPA Auctions on this item, it has been photographed ONLY.



#47 - Tyler Dry Tender Box (PZ0463)

Tyler Dry Tender Box (PZ0463), Tyler 16 ton dry tender box, rear discharge auger. Notes: Running gear NOT included. Item Location: Keenes, IL 62851 Equipment Sold "AS IS, WHERE IS": All equipment/property is sold "AS IS, WHERE IS" with no warranty or guarantees, expressed or implied, No operational assessments have been made by DPA Auctions on this item, it has been photographed ONLY.



#48 - Dry Tender Box (PZ0464)

Dry Tender Box (PZ0464), 16 ton dry tender box, rear discharge auger. Notes: Running gear NOT included. Item Location: Keenes, IL 62851 Equipment Sold "AS IS, WHERE IS": All equipment/property is sold "AS IS, WHERE IS" with no warranty or guarantees, expressed or implied, No operational assessments have been made by DPA Auctions on this item, it has been photographed ONLY.



#49 - Tyler Dry Tender Box (PZ0507)

Tyler Dry Tender Box (PZ0507), Tyler 16 ton 4 compartment dry tender box, side discharge auger, all hydraulic, roll over tarp. Notes: Stands not included. Item Location: Fenton, IL 61251 Equipment Sold "AS IS, WHERE IS": All equipment/property is sold "AS IS, WHERE IS" with no warranty or guarantees, expressed or implied, No operational assessments have been made by DPA Auctions on this item, it has been photographed ONLY.



#50 - Doyle Vertical Blender (PZ0502)

Doyle Vertical Blender (PZ0502), Doyle 8 ton stainless steel vertical blender, stainless steel hopper, approx. 30' stainless steel loadout conveyor (needs belt), Lincoln 10 hp electric motor, (S/N G02925A30), 420HE digital readout. Notes: No belt on conveyor. This blender must be removed by February 28th, 2019 with NO exceptions. Dismantle, removal and transportation is at the expense, risk and liability of the buyer. Item Location: Cambridge, IL 61238 Equipment Sold "AS IS, WHERE IS": All equipment/property is sold "AS IS, WHERE IS" with no warranty or guarantees, expressed or implied, No operational assessments have been made by DPA Auctions on this item, it has been photographed ONLY.



#50A - 2008 Buick Enclave (TR6092)

2008 Buick Enclave (TR6092), 3.6 gas engine, CXL, automatic transmission, leather interior, 3rd row seating, AM/FM radio, CD player, power windows, power locks, heated seats, power tailgate, cruise control, steering wheel controls, P225/60R19 tires, 117,701 miles. Notes: Item Location: Fremont, NE 68025 Equipment Sold "AS IS, WHERE IS": All equipment/property is sold "AS IS, WHERE IS" with no warranty or guarantees, expressed or implied, No operational assessments have been made by DPA Auctions on this item, it has been photographed ONLY.



#51 - 2013 USC LPX2000 Seed Treater (NP7430)

2013 USC LPX2000 Seed Treater (NP7430), USC LPX2000 seed treater, seed wheel, hopper, fully automated control panel (S/N 14856), automated pump stand, 30 gallon stainless steel inoculant tank, 5' drum, calibration tube, Ace Roto-Mold 30 gallon poly cone bottom tank/stand, USC Seed Series 3216P discharge conveyor (S/N 14873), Leeson 5HP 1 phase electric motor, USC Seed Series 1716P loading conveyor to treater, Leeson (S/N 14874) on 5HP 1 phase electric motor, comes with ALL manuals (see photos), mounted on 2013 Topeka Metal Specialties tandem axle gooseneck trailer, approx. 25' x 96" deck, ST235/80R16 tires, Bargman breakaway switch, GVWR 14,000lbs. Notes: Treater has had approx. 25,000 units through it, did not run in Spring of 2018. This seed treater has only traveled a total of 3 miles from the plant where it was built. Generac generator and tank shown in pictures DO NOT SELL with this treater. Trailer has NO TITLE. Item Location: Fairview, KS 66425 Equipment Sold "AS IS, WHERE IS": All equipment/property is sold "AS IS, WHERE IS" with no warranty or guarantees, expressed or implied, No operational assessments have been made by DPA Auctions on this item, it has been photographed ONLY.



#52 - 2013 Gaylean Killabrew (RMC239 Unit 10553)

2013 Gaylean Killabrew (RMC239 Unit 10553), tandem axle 4 compartment hydraulic tip trailer, self contained hydraulics, gas engine, 11R24.5 tires. Notes: Item Location: New Iberia, LA 70563 Equipment Sold "AS IS, WHERE IS": All equipment/property is sold "AS IS, WHERE IS" with no warranty or guarantees, expressed or implied, No operational assessments have been made by DPA Auctions on this item, it has been photographed ONLY.



#53 - 2015 Pace Setter Gooseneck Grain Express (NP7446)

2015 Pace Setter Gooseneck Grain Express (NP7446), Pace Setter, 400 bushel, 14' gravity dump grain trailer, tandem axle, ST235/80R16 tires, 10,000lb axles, manual roll tarp, Hydra Fold Auger, Inc., Auger-Mate Model H585BESH (S/N 18073) hydraulic tank, Honda GX240 gas motor, break away kit, GVWR 24,000lbs. Notes: Has a certificate of origin, it has never been titled. Item Location: Abilene, KS 67410 Equipment Sold "AS IS, WHERE IS": All equipment/property is sold "AS IS, WHERE IS" with no warranty or guarantees, expressed or implied, No operational assessments have been made by DPA Auctions on this item, it has been photographed ONLY.



#54 - 2010 RoGator 1184 Dry Machine (PZ0443)

2010 RoGator 1184 Dry Machine (PZ0443), diesel engine, hydrostatic transmission, air conditioning, heat, Am/Fm CD stereo, New Leader L3020 G4 - 11 stainless steel dry spreader box (S/N 130373), twin spinner, all hydraulic, Continental Contract AC65 650/65R38 flotation tires, (4) row crop tires included, Raven GPS, Raven SmarTrax, Raven monitor, lightbar, shows 3428 hours. Notes: Belt and sprockets, bearings all new in June of 2018. Item Location: Eldon, IA 52554 Equipment Sold "AS IS, WHERE IS": All equipment/property is sold "AS IS, WHERE IS" with no warranty or guarantees, expressed or implied, No operational assessments have been made by DPA Auctions on this item, it has been photographed ONLY.



#55 - 2004 Chevrolet 2500 Extended Cab Pickup (PZ0441, Unit 32614)

2004 Chevrolet 2500 Extended Cab Pickup (PZ0441, Unit 32614), 4x4, Vortec gas engine, automatic transmission, air conditioning, heat, Am/Fm CD & Cassette stereo, cruise control, power windows & locks, running boards, LT245/75R16 tires, shows 268,450 miles. Notes: PLEASE ALLOW AT LEAST 60 DAYS FOR TITLE TRANSFER. Item Location: Eldon, IA 52554 Equipment Sold "AS IS, WHERE IS": All equipment/property is sold "AS IS, WHERE IS" with no warranty or guarantees, expressed or implied, No operational assessments have been made by DPA Auctions on this item, it has been photographed ONLY.



#56 - NH3 Storage Tank (PZ0519)

NH3 Storage Tank (PZ0519), 18,000 gallon NH3 storage tank, Master tank volume gauge, no data plate. Notes: This NH3 tank must be removed by February 28th, 2019 with NO exceptions. Dismantle, removal and transportation is at the expense, risk and liability of the buyer. Item Location: Durant, IA 52747 Equipment Sold "AS IS, WHERE IS": All equipment/property is sold "AS IS, WHERE IS" with no warranty or guarantees, expressed or implied, No operational assessments have been made by DPA Auctions on this item, it has been photographed ONLY.



#57 - 2017 Mack GU532 Dry Spreader (PZ0537, Unit 103716)

2017 Mack GU532 Dry Spreader (PZ0537, Unit 103716), Cummins ISL diesel engine, Allison automatic transmission, air conditioning, heat, Am/Fm CD stereo, cruise control, power windows & locks, New Leader L3020G4-12' stainless steel dry spreader box (S/N 505541), twin spinner, all hydraulic, Bridgestone 385/65R22.5 front tires, PrimeX Terra Turbo II 48x31.00-20 rear tires, Raven SCS660 monitor, Linco-Precision LLC control panel, shows 702 hours, 12,127 miles. Notes: PLEASE ALLOW AT LEAST 60 DAYS FOR TITLE TRANSFER. Item Location: Macomb, IL 61455 Equipment Sold "AS IS, WHERE IS": All equipment/property is sold "AS IS, WHERE IS" with no warranty or guarantees, expressed or implied, No operational assessments have been made by DPA Auctions on this item, it has been photographed ONLY.



#58 - Pallet Forklift (PZ0508)

Pallet Forklift (PZ0508), Pallet model All-T-4-PRO-L forklift, 4000 lb, Briggs & Stratton 8.75 hp LP gas engine, 18x8.50-8 front tires. Notes: LP bottle NOT included. Item Location: De Witt, IA 52742 Equipment Sold "AS IS, WHERE IS": All equipment/property is sold "AS IS, WHERE IS" with no warranty or guarantees, expressed or implied, No operational assessments have been made by DPA Auctions on this item, it has been photographed ONLY.



#59 - 2004 John Deere 2200 Field Cultivator (NP7458)

2004 John Deere 2200 Field Cultivator (NP7458), 32.5' wide, 3 section, hydraulic wings, knock-on shovels, accudepth, rear harrow, 9.5L-15 rear dual tires, 11L-15 front tires. Notes: Item Location: Meadville, MO 64659 Equipment Sold "AS IS, WHERE IS": All equipment/property is sold "AS IS, WHERE IS" with no warranty or guarantees, expressed or implied, No operational assessments have been made by DPA Auctions on this item, it has been photographed ONLY.



#60 - 2001 CaseIH Titan FLX4300 Cab/Chassis Floater (CP605)

2001 CaseIH Titan FLX4300 Cab/Chassis Floater (CP605), diesel engine, Allison automatic transmission, 1000/50R25 rear tires, 48x31.00R20 front tires (1 flat tire), shows 8,553 hours. Notes: Item Location: Milford, NE 68405 Equipment Sold "AS IS, WHERE IS": All equipment/property is sold "AS IS, WHERE IS" with no warranty or guarantees, expressed or implied, No operational assessments have been made by DPA Auctions on this item, it has been photographed ONLY.



#60A - 2004 BMW X3 SUV (TR6093)

2004 BMW X3 SUV (TR6093), gas engine, 4 door, automatic transmission, 235/55R17 tires, sun roof, AM/FM CD player, Heat/AC, power windows, heated seats, leather, 167,262 miles. Notes: Noise in the rear end when speeding up. Item Location: Fremont, NE 68025 Equipment Sold "AS IS, WHERE IS": All equipment/property is sold "AS IS, WHERE IS" with no warranty or guarantees, expressed or implied, No operational assessments have been made by DPA Auctions on this item, it has been photographed ONLY.



#61 - 1994 Terra Gator 1844 Dry Floater (CP606)

1994 Terra Gator 1844 Dry Floater (CP606), Cat diesel engine, automatic transmission, New Leader L2020GT mild steel dry spreader box, dual spinners, belt over chain, 66x43.00-25 rear tires, 48x31.00-20 front tires, Ag Leader monitor, lightbar, shows 9,916 hours. Notes: Floater has a bad rear end, contact seller for more details. Item Location: Milford, NE 68405 Equipment Sold "AS IS, WHERE IS": All equipment/property is sold "AS IS, WHERE IS" with no warranty or guarantees, expressed or implied, No operational assessments have been made by DPA Auctions on this item, it has been photographed ONLY.



#62 - 1998 Bohnert Welding Pup Trailer (CP607)

1998 Bohnert Welding Pup Trailer (CP607), 10 ton dry tender box, rear discharge auger, roll tarp, 285/75R24.5 NEW tires. Notes: Item Location: Milford, NE 68405 Equipment Sold "AS IS, WHERE IS": All equipment/property is sold "AS IS, WHERE IS" with no warranty or guarantees, expressed or implied, No operational assessments have been made by DPA Auctions on this item, it has been photographed ONLY.



#63 - Willmar Wrangler Loader (PZ0621)

Willmar Wrangler Loader (PZ0621), Willmar Wrangler loader, John Deere diesel engine, hydrostatic transmission, canopy, lights, bucket. Notes: Engine ran when parked, has been parked for several years, parts have been taken off it. Please call seller for more information. Item Location: Hickman, KY 42050 Equipment Sold "AS IS, WHERE IS": All equipment/property is sold "AS IS, WHERE IS" with no warranty or guarantees, expressed or implied, No operational assessments have been made by DPA Auctions on this item, it has been photographed ONLY.



#64 - (4) Flotation Tires/Rims (NP7500)

(4) Flotation Tires/Rims (NP7500), (3) Michelin XM28 70-75% tread, (1) Titan AG49M 95% tread (NEW last season), size 620/70R46, 12 bolt rim pattern. Notes: Can be used on a John Deere 4920/30/40 or R4045, tires can be used on multiple machines. Item Location: Fort Dodge, IA 50501 Equipment Sold "AS IS, WHERE IS": All equipment/property is sold "AS IS, WHERE IS" with no warranty or guarantees, expressed or implied, No operational assessments have been made by DPA Auctions on this item, it has been photographed ONLY.



#65 - Feterl Grain Auger (PZ0509)

Feterl Grain Auger (PZ0509) Feterl 12"x100' grain auger, swing hopper, wheel assist, portable, 12.5L-15 flotation tires. Notes: Item Location: De Witt, IA 52742 Equipment Sold "AS IS, WHERE IS": All equipment/property is sold "AS IS, WHERE IS" with no warranty or guarantees, expressed or implied, No operational assessments have been made by DPA Auctions on this item, it has been photographed ONLY.



#66 - Generac 15 KW Propane Generator (PZ0531)

Generac 15 KW Propane Generator (PZ0531), Generac model 00752-4 commercial grade propane generator, 1800 RPM, Fiat Industrial engine, block heater, liquid cooled, built in 200 Amp automatic transfer switch, single phase 120/240V, 62.5 amps, weather proof enclosure, shows 378 hours. Notes: Item Location: Springfield, IL 62703 Equipment Sold "AS IS, WHERE IS": All equipment/property is sold "AS IS, WHERE IS" with no warranty or guarantees, expressed or implied, No operational assessments have been made by DPA Auctions on this item, it has been photographed ONLY.



#67 - Generac 15 KW Propane Generator (PZ0532)

Generac 15 KW Propane Generator (PZ0532), Generac model 00752-6 commercial grade propane generator, 1800 RPM, Fiat Industrial engine, block heater, liquid cooled, built in 200 Amp automatic transfer switch, single phase 120/240V, 62.5 amps, weather proof enclosure, shows 312 hours. Notes: Item Location: Springfield, IL 62703 Equipment Sold "AS IS, WHERE IS": All equipment/property is sold "AS IS, WHERE IS" with no warranty or guarantees, expressed or implied, No operational assessments have been made by DPA Auctions on this item, it has been photographed ONLY.



#68 - 2005 Palomino Pump Camper (NP7456)

2005 Palomino Pump Camper (NP7456), 26', very clean inside, non-smoker, good tires, fridge, oven, stove, microwave, hot heat, cold A/C, no known leaks, solid floors, King Pin with gooseneck attachment, all water lines are good, all tanks are good, water heater runs on gas or electric, bunk beds, table folds into a bed, couch folds into bed, queen size mattress, full size camper shower, has been pulled by a 1500 Chevy pickup, awning is in good shape, very clean camper, slide out works great, plenty of storage. Notes: Item Location: Bolckow, MO 64427 Equipment Sold "AS IS, WHERE IS": All equipment/property is sold "AS IS, WHERE IS" with no warranty or guarantees, expressed or implied, No operational assessments have been made by DPA Auctions on this item, it has been photographed ONLY.



#69 - Feterl Grain Auger (PZ0511, Unit C819)

Feterl Grain Auger (PZ0511, Unit C819), Feterl 10"x34' grain auger, Honda electric start 18 hp gas engine, portable, P205/70R15 tires. Notes: Item Location: Stanwood, IA 52337 Equipment Sold "AS IS, WHERE IS": All equipment/property is sold "AS IS, WHERE IS" with no warranty or guarantees, expressed or implied, No operational assessments have been made by DPA Auctions on this item, it has been photographed ONLY.



#70 - Feterl Grain Auger (PZ0512, Unit 826)

Feterl Grain Auger (PZ0512, Unit 826), Feterl 10"x34' grain auger, Briggs & Stratton 18 hp gas engine, portable P205/65R15 tires. Notes: Item Location: Stanwood, IA 52337 Equipment Sold "AS IS, WHERE IS": All equipment/property is sold "AS IS, WHERE IS" with no warranty or guarantees, expressed or implied, No operational assessments have been made by DPA Auctions on this item, it has been photographed ONLY.



#70A - 2013 GMC Yukon XL (TR6094)

2013 GMC Yukon XL (TR6094), gas engine, automatic transmission, leather interior, 3rd row seating, AM/FM radio, CD player, (2) DVD players, power windows, power locks, cooling seats, heated seats, sun roof, power tailgate, cruise control, steering wheel controls, P275/55R20 tires, 170,002 miles. Notes: Item Location: Fremont, NE 68025 Equipment Sold "AS IS, WHERE IS": All equipment/property is sold "AS IS, WHERE IS" with no warranty or guarantees, expressed or implied, No operational assessments have been made by DPA Auctions on this item, it has been photographed ONLY.



#71 - Convey-All Undercar Conveyor (PZ0514)

Convey-All Undercar Conveyor (PZ0514), Convey-All undercar conveyor, ST205/75D15 tires. Notes: Item Location: Stanwood, IA 52337 Equipment Sold "AS IS, WHERE IS": All equipment/property is sold "AS IS, WHERE IS" with no warranty or guarantees, expressed or implied, No operational assessments have been made by DPA Auctions on this item, it has been photographed ONLY.



#72 - Friesen Seed Bin (PZ0515, Unit 1)

Friesen Seed Bin (PZ0515, Unit 1), Friesen seed bin, ladder, stands, Spread-All model 12100 fan, No door. Notes: Item Location: Stanwood, IA 52337 Equipment Sold "AS IS, WHERE IS": All equipment/property is sold "AS IS, WHERE IS" with no warranty or guarantees, expressed or implied, No operational assessments have been made by DPA Auctions on this item, it has been photographed ONLY.



#73 - Friesen Seed Bin (PZ0516, Unit 2)

Friesen Seed Bin (PZ0516, Unit 2), Friesen seed bin, ladder, stands, Spread-All model 12100 fan, No door. Notes: Item Location: Stanwood, IA 52337 Equipment Sold "AS IS, WHERE IS": All equipment/property is sold "AS IS, WHERE IS" with no warranty or guarantees, expressed or implied, No operational assessments have been made by DPA Auctions on this item, it has been photographed ONLY.



#74 - KSI Seed Conveyor (PZ0517)

KSI Seed Conveyor (PZ0517), KSI model 1208 65 seed conveyor, PTO, hydraulic lift, cleated belt, portable, ST205/75R15 tires. Notes: Item Location: Stanwood, IA 52337 Equipment Sold "AS IS, WHERE IS": All equipment/property is sold "AS IS, WHERE IS" with no warranty or guarantees, expressed or implied, No operational assessments have been made by DPA Auctions on this item, it has been photographed ONLY.



#75 - Hiniker Snow Plow (PZ0513)

Hiniker Snow Plow (PZ0513), Hiniker 8' snow plow, lights. Notes: Item Location: Stanwood, IA 52337 Equipment Sold "AS IS, WHERE IS": All equipment/property is sold "AS IS, WHERE IS" with no warranty or guarantees, expressed or implied, No operational assessments have been made by DPA Auctions on this item, it has been photographed ONLY.



#76 - USC LP2000 Seed Treater (PZ0506)

USC LP2000 Seed Treater (PZ0506), USC LP2000 seed treater, seed wheel, 2 - easy-load Materflex motors, control panel, seed wheel control panel, stainless steel mix tank. Notes: Item Location: Geneseo, IL 61254 Equipment Sold "AS IS, WHERE IS": All equipment/property is sold "AS IS, WHERE IS" with no warranty or guarantees, expressed or implied, No operational assessments have been made by DPA Auctions on this item, it has been photographed ONLY.



#77 - 2018 CaseIH Titan 3540 Dry Floater

2018 CaseIH Titan 3540 Dry Floater, 8.7L diesel engine 400HP, Allison automatic transmission, deluxe cab, HID lights, heat, air conditioning, Am/Fm CD radio, New Leader L5034 G4 dry spreader box, 18', dual spinners, 1050/50R32 tires, Raven Viper 4 monitor, shows 640 hours. Notes: Item Location: Ada, MN 56510 Equipment Sold "AS IS, WHERE IS": All equipment/property is sold "AS IS, WHERE IS" with no warranty or guarantees, expressed or implied, No operational assessments have been made by DPA Auctions on this item, it has been photographed ONLY.



#78 - 1998 Internatioal 4900 Van Truck (CP601)

1998 Internatioal 4900 Van Truck (CP601), IHC 300HP diesel engine, Spicer 10 speed transmission, heat, air conditioning, cruise, tandem axle, full screw, walking beam suspension, dry van body, rollup door, 11R22.5 tires, shows 456,690 miles. Notes: Item Location: Milford, NE 68405 Equipment Sold "AS IS, WHERE IS": All equipment/property is sold "AS IS, WHERE IS" with no warranty or guarantees, expressed or implied, No operational assessments have been made by DPA Auctions on this item, it has been photographed ONLY.



#79 - 2003 Ford F-250 XL Super Duty 4x4 Pickup (CP603)

2003 Ford F-250 XL Super Duty 4x4 Pickup (CP603), regular cab, 5.4L gas engine, automatic transmission, heat, air conditioning, Am/Fm radio, cruise, long box, plastic bed liner, running boards, ag hitch, shows 171,025 miles. Notes: Item Location: Milford, NE 68405 Equipment Sold "AS IS, WHERE IS": All equipment/property is sold "AS IS, WHERE IS" with no warranty or guarantees, expressed or implied, No operational assessments have been made by DPA Auctions on this item, it has been photographed ONLY.



#80 - 1999 Chevrolet 3500 Stakebed Pickup (CP604)

1999 Chevrolet 3500 Stakebed Pickup (CP604), Vortec gas engine, automatic transmission, heat, air conditioning, Am/Fm radio, rear stakebed, dually, shows 270,052 miles. Notes: Item Location: Milford, NE 68405 Equipment Sold "AS IS, WHERE IS": All equipment/property is sold "AS IS, WHERE IS" with no warranty or guarantees, expressed or implied, No operational assessments have been made by DPA Auctions on this item, it has been photographed ONLY.



#80A - 1989 Chevrolet Corvette (TR6095)

1989 Chevrolet Corvette (TR6095), gas engine, AM/FM CD player, Heat/AC, automatic transmission, power windows, power locks, power top, P275/40R17 tires, 74,475 miles. Notes: Item Location: Fremont, NE 68025 Equipment Sold "AS IS, WHERE IS": All equipment/property is sold "AS IS, WHERE IS" with no warranty or guarantees, expressed or implied, No operational assessments have been made by DPA Auctions on this item, it has been photographed ONLY.



#82 - 2003 Chevrolet Silverado 2500HD 4x4 Pickup (NP7423, Unit 45884)

2003 Chevrolet Silverado 2500HD 4x4 Pickup (NP7423, Unit 45884) regular cab, Vortec 6.0L gas engine, automatic transmission, heat, air conditioning, Am/Fm radio, dual climate control, cruise, running boards (1 missing), ag hitch, LT265/75R16 tires, shows 166,049 miles. Notes: PLEASE ALLOW AT LEAST 60 DAYS FOR TITLE TRANSFER. Item Location: Clay Center, KS 67432 Equipment Sold "AS IS, WHERE IS": All equipment/property is sold "AS IS, WHERE IS" with no warranty or guarantees, expressed or implied, No operational assessments have been made by DPA Auctions on this item, it has been photographed ONLY.



#83 - Pallet Air Max 5 Parts (NP7426)

Pallet Air Max 5 Parts (NP7426), (4) 14" wide belt chains, cylinders, other parts. Notes: Item Location: Clay Center, KS 67432 Equipment Sold "AS IS, WHERE IS": All equipment/property is sold "AS IS, WHERE IS" with no warranty or guarantees, expressed or implied, No operational assessments have been made by DPA Auctions on this item, it has been photographed ONLY.



#84 - 2011 Terra Gator 6303 Dry Floater (PZ0624)

2011 Terra Gator 6303 Dry Floater (PZ0624), Susu 8.4L (Non def) diesel engine, CVT transmission, air conditioning, heat, New Leader L4000 G4 - 14 409 stainless steel dry spreader box with B.O.C., twin spinner, all hydraulic, roll over tarp, Michelin front tire, Alliance 100/50R25 rear tires @ 35%, Raven Viper Pro monitor, RGL600 lightbar, Phoenix 200 GPS, Raven SmarTraxx autosteer, shows 4860 hours. Notes: Oil pressure issues at idle, contact seller for more details. Item Location: Macedonia, IL 62860 Equipment Sold "AS IS, WHERE IS": All equipment/property is sold "AS IS, WHERE IS" with no warranty or guarantees, expressed or implied, No operational assessments have been made by DPA Auctions on this item, it has been photographed ONLY.



#85 - 2007 Sterling Acterra Dry Floater (PZ0539, Unit 103717)

2007 Sterling Acterra Dry Floater (PZ0539, Unit 103717), Cat C7 Acert diesel engine, Allison automatic transmission, air conditioning, heat, Am/Fm radio, New Leader L3020G4 - 12' stainless steel dry spreader box (S/N 131293), twin spinner, all hydraulic, roll over tarp, PrimeX Terra Blaster 48x25.00-20 front tires, Tianli 48x31.00-20 rear tires, Raven SCS660 monitor, Raven lightbar, shows 2262 hours, 38,017 miles. Notes: Item Location: Macomb, IL 61455 Equipment Sold "AS IS, WHERE IS": All equipment/property is sold "AS IS, WHERE IS" with no warranty or guarantees, expressed or implied, No operational assessments have been made by DPA Auctions on this item, it has been photographed ONLY.



#86 - Blu Jet AT3000 Liquid Applicator (PZ0540)

Blu Jet AT3000 Liquid Applicator (PZ0540), Blu Jet AT3000 15 coulter liquid applicator, 1000 gallon poly liquid tank, John Blue ground driven pump, hydraulic wings, Good Year Dyna Torque 12.4-38 tires. Notes: Item Location: Macomb, IL 61455 Equipment Sold "AS IS, WHERE IS": All equipment/property is sold "AS IS, WHERE IS" with no warranty or guarantees, expressed or implied, No operational assessments have been made by DPA Auctions on this item, it has been photographed ONLY.



#87 - 2005 B-B Flatbed Trailer (PZ0505, Unit 4515)

2005 B-B Flatbed Trailer (PZ0505, Unit 4515), 2005 B-B flatbed tilt trailer, 6' front deck, 24' tilt deck, wood floor, D rings, tandem axle, dual wheels, pintal hitch, 235/75R17.5 tires. Notes: Item Location: Geneseo, IL 61254 Equipment Sold "AS IS, WHERE IS": All equipment/property is sold "AS IS, WHERE IS" with no warranty or guarantees, expressed or implied, No operational assessments have been made by DPA Auctions on this item, it has been photographed ONLY.



#88 - Case 1845C Skid Steer (PZ0520, Unit 752)

Case 1845C Skid Steer (PZ0520, Unit 752), Case 1845C skid steer, diesel engine, hydrostatic transmission, canopy, lights, Berlon 6' bucket & forks, 12-16.5 tires, shows 4572 hours. Notes: Item Location: Stockton, IA 52769 Equipment Sold "AS IS, WHERE IS": All equipment/property is sold "AS IS, WHERE IS" with no warranty or guarantees, expressed or implied, No operational assessments have been made by DPA Auctions on this item, it has been photographed ONLY.



#89 - 1956 Chevrolet 4400 Flatbed Truck (PZ0462)

1956 Chevrolet 4400 Flatbed Truck (PZ0462), gas engine, manual transmission, Auto Meter gauges, single axle, hydraulic brakes, 11'x96" flatbed, wood floor, Riechers 40" wood stake side gates, New West Lake 9R22.5 front tires, New Akureit 8.25-20 rear tires. Notes: PLEASE ALLOW AT LEAST 30 DAYS FOR TITLE TRANSFER. Item Location: Baldwin, IL 62217 Equipment Sold "AS IS, WHERE IS": All equipment/property is sold "AS IS, WHERE IS" with no warranty or guarantees, expressed or implied, No operational assessments have been made by DPA Auctions on this item, it has been photographed ONLY.



#90 - 2008 Peterbilt 388 Day Cab Truck (PZ0450, Unit 20)

2008 Peterbilt 388 Day Cab Truck (PZ0450, Unit 20), Cat C-13 Acert diesel engine, 10 speed transmission, air conditioning, heat, Am/Fm CD stereo, power windows, cruise control, engine brake, tandem axle, air ride suspension, air slide 5th wheel, HydraPak wet kit, Michelin 275/80R22.5 front tires, Michelin 445/50R22.5 super single rear tires, aluminum rims, 12,000lb front axle, 18,000lb rear axles, shows 1,251,192 miles. Notes: Item Location: Baldwin, IL 62217 Equipment Sold "AS IS, WHERE IS": All equipment/property is sold "AS IS, WHERE IS" with no warranty or guarantees, expressed or implied, No operational assessments have been made by DPA Auctions on this item, it has been photographed ONLY.



#90A - 2004 Ford F-150 (TR6057)

2004 Ford F-150 (TR6057), gas engine, AM/FM CD player, automatic transmission, 4x4, heat/AC, extended cab, bed liner, 235/75R17 tires, power windows/locks/mirrors, cruise control, 179,832 miles. Notes: Item Location: Fremont, NE 68025 Equipment Sold "AS IS, WHERE IS": All equipment/property is sold "AS IS, WHERE IS" with no warranty or guarantees, expressed or implied, No operational assessments have been made by DPA Auctions on this item, it has been photographed ONLY.



#91 - Blu Jet Anhydrous Tool Bar (PD980)

Blu Jet Anhydrous Tool Bar (PD980), 11 knife, ground drive pump, Raven NH3 Super cooler, 11L - 15SL tires. Notes: Item Location: Conception Junction, MO 64434 Equipment Sold "AS IS, WHERE IS": All equipment/property is sold "AS IS, WHERE IS" with no warranty or guarantees, expressed or implied, No operational assessments have been made by DPA Auctions on this item, it has been photographed ONLY.



#92 - PT&E Liquid System (NP7451)

PT&E Liquid System (NP7451), 1,600 gallon stainless steel liquid system, 60' boom, 50 gallon stainless steel side mount rinse tank, foam marker, fenders. Notes: Came off 1988 International. Item Location: Eldorado, IL 62930 Equipment Sold "AS IS, WHERE IS": All equipment/property is sold "AS IS, WHERE IS" with no warranty or guarantees, expressed or implied, No operational assessments have been made by DPA Auctions on this item, it has been photographed ONLY.



#93 - Nutri-Placr 2800 Liquid Applicator (NP7454)

Nutri-Placr 2800 Liquid Applicator (NP7454), 16 row, coulters, 1,400 gallon poly tank, CDS - John Blue LM4955 ground drive pump, 420/80R46 tires. Notes: Item Location: Eldorado, IL 62930 Equipment Sold "AS IS, WHERE IS": All equipment/property is sold "AS IS, WHERE IS" with no warranty or guarantees, expressed or implied, No operational assessments have been made by DPA Auctions on this item, it has been photographed ONLY.



#94 - Nutri-Placr 2800 Liquid Applicator (NP7455)

Nutri-Placr 2800 Liquid Applicator (NP7455), 16 row, coulters, 1,400 gallon poly tank, CDS - John Blue NGP90558 ground drive pump, 420/80R46 tires. Notes: Item Location: Eldorado, IL 62930 Equipment Sold "AS IS, WHERE IS": All equipment/property is sold "AS IS, WHERE IS" with no warranty or guarantees, expressed or implied, No operational assessments have been made by DPA Auctions on this item, it has been photographed ONLY.



#95 - USC LP800 Seed Treater (NP7448)

USC LP800 Seed Treater (NP7448), seed wheel, seed wheel speed adjust, control pannel, stainless steel inoculant tank, calibration tube, KSI Hooper above treater, Cardianl Detecto FSL-31 scale (S/N S0172668-2), 20,000lb capacity, Cardinal Storm Model 205 weight indicator scale head (S/N E04111-0124), KSI automated control panel. Notes: Item Location: Eldorado, IL 62930 Equipment Sold "AS IS, WHERE IS": All equipment/property is sold "AS IS, WHERE IS" with no warranty or guarantees, expressed or implied, No operational assessments have been made by DPA Auctions on this item, it has been photographed ONLY.



#96 - 2008 Sterling Dry Floater (PZ0571, Unit 103718)

2008 Sterling Dry Floater (PZ0571, Unit 103718), Cummins ISC diesel engine, Allison automatic transmission, air conditioning, heat, Am/Fm radio, cruise control, power windows & locks, New Leader L3020G4 - 12' stainless steel dry spreader box (S/N 132655), twin spinner, all hydraulic, Good Year 385/65R22.5 front tires, PrimeX Terra Turbo II 48x31.00-20 rear tires, Raven SCS660 monitor, Raven lightbar, shows 4942 hours, 80,489 miles. Notes: Item Location: Lewistown, IL 61542 Equipment Sold "AS IS, WHERE IS": All equipment/property is sold "AS IS, WHERE IS" with no warranty or guarantees, expressed or implied, No operational assessments have been made by DPA Auctions on this item, it has been photographed ONLY.



#97 - Blu Jet AT3000 Liquid Applicator (PZ0541)

Blu Jet AT3000 Liquid Applicator (PZ0541), Blu Jet AT3000 15 coulter liquid applicator, 1000 gallon poly liquid tank, John Blue ground driven pump, hydraulic wings, Good Year Dyna Torque 12.4-38 tires. Notes: Item Location: Macomb, IL 61455 Equipment Sold "AS IS, WHERE IS": All equipment/property is sold "AS IS, WHERE IS" with no warranty or guarantees, expressed or implied, No operational assessments have been made by DPA Auctions on this item, it has been photographed ONLY.



#98 - 2009 GMC C7500 LP Truck (PZ0454, Unit 13)

2009 GMC C7500 LP Truck (PZ0454, Unit 13), 8.1L V-8 LP gas engine, automatic transmission, heat, Am/Fm radio, cruise control, single axle, 2008 Arrow 3000 gallon LP tank, National Board #37048, S/N 41841, Lectro Count LCR-II meter, Liquid Controls, Magnetel tank volume gauge, electric hose reel with hose, Michelin 11R22.5 tires, aluminum rims, 12,000lb front axle, 21,000 rear axle, shows 303,391 miles. Notes: Item Location: Baldwin, IL 62217 Equipment Sold "AS IS, WHERE IS": All equipment/property is sold "AS IS, WHERE IS" with no warranty or guarantees, expressed or implied, No operational assessments have been made by DPA Auctions on this item, it has been photographed ONLY.



#99 - 2010 Ford F250 XLT Super Duty Extended Cab Pickup (PZ0459)

2010 Ford F250 XLT Super Duty Extended Cab Pickup (PZ0459), 4x4, 5.4L V8 gas engine, automatic transmission, air conditioning, heat, Am/Fm radio, cruise control, power windows & locks, power seats, running boards, long box, Buyers side tool boxes, Michelin LT245/75R17 tires, shows 240,182 miles. Notes: Item Location: Baldwin, IL 62217 Equipment Sold "AS IS, WHERE IS": All equipment/property is sold "AS IS, WHERE IS" with no warranty or guarantees, expressed or implied, No operational assessments have been made by DPA Auctions on this item, it has been photographed ONLY.



#100 - 2001 Ford F250 XLT Super Duty Extended Cab Pickup (PZ0460)

2001 Ford F250 XLT Super Duty Extended Cab Pickup (PZ0460), 4x4, Powerstroke diesel engine, automatic transmission, air conditioning, heat, Am/Fm CD & Cassette stereo, cruise control, power windows & locks, running boards, in box tool box, Tommy Gate 1300lb capacity, S/N 00511126, Michelin LT235/85R16 tires, shows 335,214 miles. Notes: Item Location: Baldwin, IL 62217 Equipment Sold "AS IS, WHERE IS": All equipment/property is sold "AS IS, WHERE IS" with no warranty or guarantees, expressed or implied, No operational assessments have been made by DPA Auctions on this item, it has been photographed ONLY.



#101 - 2011 Chevrolet Suburban (PZ0456)

2011 Chevrolet Suburban (PZ0456), 4x4, 5.3L V8 gas engine, automatic transmission, air conditioning, heat, Am/Fm CD stereo, cruise control, power windows & locks, leather seats, power seats, heated seats, video player, running boards, 4 door, lift gate, Good Year 305/40R22 tires, shows 178,123 miles. Notes: Item Location: Baldwin, IL 62217 Equipment Sold "AS IS, WHERE IS": All equipment/property is sold "AS IS, WHERE IS" with no warranty or guarantees, expressed or implied, No operational assessments have been made by DPA Auctions on this item, it has been photographed ONLY.



#102 - 1993 IHC Truck (PZ0498, Unit 3308)

1993 IHC Truck (PZ0498, Unit 3308), Cat diesel engine, SD PS-9N transmission, air conditioning, heat, Am/Fm radio, engine brake, tandem axle, full screw, air ride suspension, 285/75R24.5 front tires, 275/80R24.5 rear tires, fenders, shows 798,626 miles. Notes: Item Location: Galva, IL 61434 Equipment Sold "AS IS, WHERE IS": All equipment/property is sold "AS IS, WHERE IS" with no warranty or guarantees, expressed or implied, No operational assessments have been made by DPA Auctions on this item, it has been photographed ONLY.



#103 - 2002 Dodge Ram 2500 Pickup (PZ0527, Unit 09914)

2002 Dodge Ram 2500 Pickup (PZ0527, Unit 09914), 4x4, V8 gas engine, automatic transmission, air conditioning, heat, Am/Fm cassette radio, power windows & locks, running boards, LT265/75R16 tires, shows 159,655 miles. Notes: PLEASE ALLOW AT LEAST 60 DAYS FOR TITLE TRANSFER. Item Location: Breda, IA 51436 Equipment Sold "AS IS, WHERE IS": All equipment/property is sold "AS IS, WHERE IS" with no warranty or guarantees, expressed or implied, No operational assessments have been made by DPA Auctions on this item, it has been photographed ONLY.



#104 - 2002 Dodge Ram 2500 Pickup (PZ0528, Unit 09913)

2002 Dodge Ram 2500 Pickup (PZ0528, Unit 09913), 4x4, V8 gas engine, automatic transmission, air conditioning, heat, Am/Fm cassette radio, power windows & locks, running boards, LT265/75R16 tires, shows 175,599 miles. Notes: PLEASE ALLOW AT LEAST 60 DAYS FOR TITLE TRANSFER. Item Location: Breda, IA 51436 Equipment Sold "AS IS, WHERE IS": All equipment/property is sold "AS IS, WHERE IS" with no warranty or guarantees, expressed or implied, No operational assessments have been made by DPA Auctions on this item, it has been photographed ONLY.



#105 - Brent Weigh Wagon (PZ0510)

Brent Weigh Wagon (PZ0510), Brent model 150 weigh wagon, side discharge auger, electric start gas engine, J-Star model 5 digital readout, hand control, 9.50-16.5LT tires. Notes: Scale needs work. Item Location: Lost Nation, IA 52254 Equipment Sold "AS IS, WHERE IS": All equipment/property is sold "AS IS, WHERE IS" with no warranty or guarantees, expressed or implied, No operational assessments have been made by DPA Auctions on this item, it has been photographed ONLY.



#106 - 2013 Chevrolet Equinox (PZ0474, Unit 76170)

2013 Chevrolet Equinox (PZ0474, Unit 76170), V6 VVT Direct Injection gas engine, automatic transmission, air conditioning, heat, Am/Fm radio, cruise control, power windows & locks, power drivers seat, P225/65R17 tires, shows 128,512 miles. Notes: Needs fuel pump radiator, keys stuck in ignition, has other issues. Please contact seller for more information. PLEASE ALLOW AT LEAST 60 DAYS FOR TITLE TRANSFER. Item Location: Flora, IL 62839 Equipment Sold "AS IS, WHERE IS": All equipment/property is sold "AS IS, WHERE IS" with no warranty or guarantees, expressed or implied, No operational assessments have been made by DPA Auctions on this item, it has been photographed ONLY.



#107 - KSI Loading Conveyor (NP7449)

KSI Loading Conveyor (NP7449), Model 1610-37E, stationary, electric motor. Notes: Item Location: Eldorado, IL 62930 Equipment Sold "AS IS, WHERE IS": All equipment/property is sold "AS IS, WHERE IS" with no warranty or guarantees, expressed or implied, No operational assessments have been made by DPA Auctions on this item, it has been photographed ONLY.



#108 - KSI Discharge Conveyor (NP7450)

KSI Discharge Conveyor (NP7450), Model 1208-27, portable, electric motor, ST175/80R16 tires. Notes: Item Location: Eldorado, IL 62930 Equipment Sold "AS IS, WHERE IS": All equipment/property is sold "AS IS, WHERE IS" with no warranty or guarantees, expressed or implied, No operational assessments have been made by DPA Auctions on this item, it has been photographed ONLY.



#109 - 2013 Ford F-150 XL 4x4 Pickup (NP7452)

2013 Ford F-150 XL 4x4 Pickup (NP7452), extended cab, 5.0L gas engine, automatic transmission, heat, air conditioning, Am/Fm CD radio, rear toolbox, LT265/70R17 tires, tow package, shows 147,311 mile. Notes: Item Location: Eldorado, IL 62930 Equipment Sold "AS IS, WHERE IS": All equipment/property is sold "AS IS, WHERE IS" with no warranty or guarantees, expressed or implied, No operational assessments have been made by DPA Auctions on this item, it has been photographed ONLY.



#110 - Blu Jet AT3000 Liquid Applicator (PZ0577)

Blu Jet AT3000 Liquid Applicator (PZ0577), Blu Jet AT3000 15 coulter liquid applicator, 1000 gallon poly liquid tank, John Blue ground driven pump, hydraulic wings, Good Year Super Traction Radial DT800 320/85R38 tires. Notes: Item Location: Lewistown, IL 61542 Equipment Sold "AS IS, WHERE IS": All equipment/property is sold "AS IS, WHERE IS" with no warranty or guarantees, expressed or implied, No operational assessments have been made by DPA Auctions on this item, it has been photographed ONLY.



#111 - 2007 John Deere 4830 Sprayer (PZ0534, Unit 35969)

2007 John Deere 4830 Sprayer (PZ0534, Unit 35969), John Deere diesel engine, hydrostatic transmission, air conditioning, heat, Am/Fm CD stereo, 8 - 47 KG front weights, 1025 gallon stainless steel liquid system, 100' boom, foam marker poly foam marker tank, Firestone 380/90R46 tires, fenders, StarFire iTC globe, John Deere GreenStar 3 monitor, shows 3855 hours. Notes: 2018 New product pump w/hydraulic motor, both outer booms, new back check valve, monitor, 2017 New foam tank, rear planetarys, front air bags, pins/bushings in suspension, H brackets, 2016 New wire loom ignition, weidment w/boom pivot spindle. Whole bunch of new parts, please look at pictures. Item Location: Fairfield, IA 52556 Equipment Sold "AS IS, WHERE IS": All equipment/property is sold "AS IS, WHERE IS" with no warranty or guarantees, expressed or implied, No operational assessments have been made by DPA Auctions on this item, it has been photographed ONLY.



#112 - Liquid Nurse Caddy (NP7428, Unit 12657)

Liquid Nurse Caddy (NP7428, Unit 12657), poly bottom poly liquid tank, squeeze pump, 18.4-26 tires, PSI gauge, 2 port rear hydraulics, Tank 07. Notes: Item Location: Galva, KS 67443 Equipment Sold "AS IS, WHERE IS": All equipment/property is sold "AS IS, WHERE IS" with no warranty or guarantees, expressed or implied, No operational assessments have been made by DPA Auctions on this item, it has been photographed ONLY.



#113 - Liquid Nurse Caddy (NP7429, Unit 12659)

Liquid Nurse Caddy (NP7429, Unit 12659), poly bottom poly liquid tank, NO squeeze pump, 18.4-26 tires, PSI gauge, 2 port rear hydraulics, Tank 10. Notes: Item Location: Galva, KS 67443 Equipment Sold "AS IS, WHERE IS": All equipment/property is sold "AS IS, WHERE IS" with no warranty or guarantees, expressed or implied, No operational assessments have been made by DPA Auctions on this item, it has been photographed ONLY.



#114 - 7 Shank DMI 730B Disc Ripper (ED706)

7 Shank DMI 730B Disc Ripper (ED706), hydraulic disk gangs in the front, hydraulic leveler in the rear, no welds. Notes: Item Location: Bowen, IL 62316 Equipment Sold "AS IS, WHERE IS": All equipment/property is sold "AS IS, WHERE IS" with no warranty or guarantees, expressed or implied, No operational assessments have been made by DPA Auctions on this item, it has been photographed ONLY.



#115 - 2016 Chevrolet Silverado 3500HD 4x4 Pickup (NP7427, Unit 37165)

2016 Chevrolet Silverado 3500HD 4x4 Pickup (NP7427, Unit 37165), regular cab, Vortec 6.0L gas engine, automatic transmission, heat, air conditioning, Am/Fm radio, power windows, locks and mirrors, cruise, tow package, spray-in bed liner, LT275/70R18 tires, Westin running boards, shows 79,895 miles. Notes: Pickup has been in an accident, for operational condition please contact seller. PLEASE ALLOW AT LEAST 60 DAYS FOR TITLE TRANSFER. Item Location: Galva, KS 67443 Equipment Sold "AS IS, WHERE IS": All equipment/property is sold "AS IS, WHERE IS" with no warranty or guarantees, expressed or implied, No operational assessments have been made by DPA Auctions on this item, it has been photographed ONLY.



#116 - 2014 Malibu Wakesetter VLX (CG559)

2014 Malibu Wakesetter VLX (CG559), Indmar 350 Monsoon, 220 hours, 2 outlet heater, surfgate, power wedges, snap out carpet, Bimini top, board, cover, tandem axle trailer. Notes: Item Location: Valley, NE 68064 Equipment Sold "AS IS, WHERE IS": All equipment/property is sold "AS IS, WHERE IS" with no warranty or guarantees, expressed or implied, No operational assessments have been made by DPA Auctions on this item, it has been photographed ONLY.



#117 - 2012 Takeuchi TL250 (DL393)

2012 Takeuchi TL250 (DL393), 98hp, 2 speed, joystick controls, cab heat & A/C, AM/FM radio, hydraulic detach, tracks are 85%, shows 1401 hours. Notes: Equipment is still in use, hours may vary. Item Location: Keytesville, MO 65261 Equipment Sold "AS IS, WHERE IS": All equipment/property is sold "AS IS, WHERE IS" with no warranty or guarantees, expressed or implied, No operational assessments have been made by DPA Auctions on this item, it has been photographed ONLY.



#118 - 2016 Loadtrail Trailer (DJR020)

2016 Loadtrail Trailer (DJR020), 102' x 24', 7k axles, 235/80x16 tires, dual jacks, 2 5/16 coupler, spring assist ramps, LED lights, 8500 lbs. Super winch, 8000 lbs. Ramsey winch, 2-20,000 lbs. snatch blocks, 5k diamond plate drive over fenders. Notes: Item Location: Belmont, WI 53510 Equipment Sold "AS IS, WHERE IS": All equipment/property is sold "AS IS, WHERE IS" with no warranty or guarantees, expressed or implied, No operational assessments have been made by DPA Auctions on this item, it has been photographed ONLY.



#120 - 1995 IHC 4900 LP Truck (PZ0455, Unit 11)

1995 IHC 4900 LP Truck (PZ0455, Unit 11), DT466E 7.6L diesel engine, 6 speed transmission, air conditioning, heat, Am/Fm CD stereo, single axle, 1996 Trinity 3000 gallon LP tank, National Board #89779, S/N 122494, Lectro Count LCR-II meter, Liquid Controls, Rochester tank volume gauge, electric hose reel with hose, Michelin 11R22.5 front tires, Firestone 11R22.5 rear tires, shows 290,715 miles. Notes: Item Location: Baldwin, IL 62217 Equipment Sold "AS IS, WHERE IS": All equipment/property is sold "AS IS, WHERE IS" with no warranty or guarantees, expressed or implied, No operational assessments have been made by DPA Auctions on this item, it has been photographed ONLY.



#121 - Nh3 Nurse Tank (DR0449 Unit 109)

Nh3 Nurse Tank (DR0449 Unit 109), 1000 gallon top front fill tank, data tag, 5th wheel style running gear, rear hitch, 11L-15 tires. Notes: Complete Dispersal of Nh3 division. Item Location: Dixon, NE 68732 Equipment Sold "AS IS, WHERE IS": All equipment/property is sold "AS IS, WHERE IS" with no warranty or guarantees, expressed or implied, No operational assessments have been made by DPA Auctions on this item, it has been photographed ONLY.



#122 - Nh3 Nurse Tank (DR0452 Unit 107)

Nh3 Nurse Tank (DR0452 Unit 107), 1000 gallon top front fill tank, data tag, bolster style running gear, rear hitch, 11L-15 tires. Notes: Complete Dispersal of Nh3 division. Item Location: Dixon, NE 68732 Equipment Sold "AS IS, WHERE IS": All equipment/property is sold "AS IS, WHERE IS" with no warranty or guarantees, expressed or implied, No operational assessments have been made by DPA Auctions on this item, it has been photographed ONLY.



#123 - Nh3 Nurse Tank (DR0451 Unit 143)

Nh3 Nurse Tank (DR0451 Unit 143), 1000 gallon top front fill tank, data tag, 5th wheel style running gear, rear hitch, 11L-15 tires. Notes: Complete Dispersal of Nh3 division. Item Location: Dixon, NE 68732 Equipment Sold "AS IS, WHERE IS": All equipment/property is sold "AS IS, WHERE IS" with no warranty or guarantees, expressed or implied, No operational assessments have been made by DPA Auctions on this item, it has been photographed ONLY.



#124 - Nh3 Nurse Tank (DR0450 Unit 142)

Nh3 Nurse Tank (DR0450 Unit 142), 1000 gallon center fill tank, NO data tag, 5th wheel style running gear, rear hitch, 11L-15 tires. Notes: Complete Dispersal of Nh3 division. Item Location: Dixon, NE 68732 Equipment Sold "AS IS, WHERE IS": All equipment/property is sold "AS IS, WHERE IS" with no warranty or guarantees, expressed or implied, No operational assessments have been made by DPA Auctions on this item, it has been photographed ONLY.



#125 - Double Nh3 Nurse Tank (DR0453 Unit 131)

Double Nh3 Nurse Tank (DR0453 Unit 131), double 1000 gallon top front fill tanks, data tags, Duo lift gooseneck gear, rear hitch, 385/65R22.5 tires. Notes: Complete Dispersal of Nh3 division. Item Location: Dixon, NE 68732 Equipment Sold "AS IS, WHERE IS": All equipment/property is sold "AS IS, WHERE IS" with no warranty or guarantees, expressed or implied, No operational assessments have been made by DPA Auctions on this item, it has been photographed ONLY.



#126 - Double Nh3 Nurse Tank (DR0454 Unit 132)

Double Nh3 Nurse Tank (DR0454 Unit 132), double 1000 gallon top front fill tanks, data tags, Duo lift gooseneck gear, 385/65R22.5 tires. Notes: Complete Dispersal of Nh3 division. Item Location: Dixon, NE 68732 Equipment Sold "AS IS, WHERE IS": All equipment/property is sold "AS IS, WHERE IS" with no warranty or guarantees, expressed or implied, No operational assessments have been made by DPA Auctions on this item, it has been photographed ONLY.



#127 - Nh3 Nurse Tank (DR0455 Unit 136)

Nh3 Nurse Tank (DR0455 Unit 136), 1000 gallon top front fill tank, data tag, Duo Lift high rise running gear, set up on narrow 60" centers, rear hitch, 11L-15 tires. Notes: Complete Dispersal of Nh3 division. Item Location: Dixon, NE 68732 Equipment Sold "AS IS, WHERE IS": All equipment/property is sold "AS IS, WHERE IS" with no warranty or guarantees, expressed or implied, No operational assessments have been made by DPA Auctions on this item, it has been photographed ONLY.



#128 - 2013 Ford F-150 XL 4x4 Pickup (NP7453)

2013 Ford F-150 XL 4x4 Pickup (NP7453), extended cab, 5.0L gas engine, automatic transmission, heat, air conditioning, Am/Fm radio, running boards, LT245/70R17 tires, tow package, shows 127,659 miles. Notes: Item Location: Eldorado, IL 62930 Equipment Sold "AS IS, WHERE IS": All equipment/property is sold "AS IS, WHERE IS" with no warranty or guarantees, expressed or implied, No operational assessments have been made by DPA Auctions on this item, it has been photographed ONLY.



#129 - Continental Flotation Tires (PZ0535)

Continental Flotation Tires (PZ0535), 4 - Continental Contract AC65 650/65R38 flotation tires & rims. Notes: Item Location: Fairfield, IA 52556 Equipment Sold "AS IS, WHERE IS": All equipment/property is sold "AS IS, WHERE IS" with no warranty or guarantees, expressed or implied, No operational assessments have been made by DPA Auctions on this item, it has been photographed ONLY.



#130 - 1996 Ford L7000 Liquid Nurse Truck (PZ0538, Unit 103705)

1996 Ford L7000 Liquid Nurse Truck (PZ0538, Unit 103705), Cummins diesel engine, 5 speed transmission, 2 speed rear end, heat, Am/Fm radio, single axle, spring suspension, 1600 gallon stainless steel liquid nurse tank, Briggs & Stratton gas engine, Pacer pump, 10.00R20 tires, shows 201,577 miles. Notes: PLEASE ALLOW AT LEAST 60 DAYS FOR TITLE TRANSFER. Item Location: Macomb, IL 61455 Equipment Sold "AS IS, WHERE IS": All equipment/property is sold "AS IS, WHERE IS" with no warranty or guarantees, expressed or implied, No operational assessments have been made by DPA Auctions on this item, it has been photographed ONLY.



#131 - 1995 IHC Dry Tender Truck (PZ0576, Unit 98273)

1995 IHC Dry Tender Truck (PZ0576, Unit 98273), Cat 3176 diesel engine, SD-PS-9N transmission, air conditioning, heat, Am/Fm CD stereo, cruise control, tandem axle, full screw, air ride suspension, Willmar 16 ton dry tender box, side discharge auger, all hydraulic, roll over tarp, 315/80R22.5 front tires, 11R22.5 rear tires, shows 659,886 miles. Notes: PLEASE ALLOW AT LEAST 60 DAYS FOR TITLE TRANSFER. Item Location: Lewistown, IL 61542 Equipment Sold "AS IS, WHERE IS": All equipment/property is sold "AS IS, WHERE IS" with no warranty or guarantees, expressed or implied, No operational assessments have been made by DPA Auctions on this item, it has been photographed ONLY.



#132 - 1995 Ford L7000 Dump Truck (PZ0536, Unit 103704)

1995 Ford L7000 Dump Truck (PZ0536, Unit 103704), Cummins diesel engine, 5 speed transmission, 2 speed rear end, heat, Am/Fm cassette radio, single axle, spring suspension, 12' steel dump body, hoist, 11R22.5 front tires, 10.00R20 rear tires, shows 181,023 miles. Notes: PLEASE ALLOW AT LEAST 60 DAYS FOR TITLE TRANSFER. Item Location: Macomb, IL 61455 Equipment Sold "AS IS, WHERE IS": All equipment/property is sold "AS IS, WHERE IS" with no warranty or guarantees, expressed or implied, No operational assessments have been made by DPA Auctions on this item, it has been photographed ONLY.



#133 - 1998 Mack CH613 Truck (PZ0578, Unit 98276)

1998 Mack CH613 Truck (PZ0578, Unit 98276), Mack E7-350 diesel engine, Eaton automatic transmission, air conditioning, heat, Am/Fm cassette radio, cruise control, engine brake, tandem axle, full screw, 315/80R22.5 front tires, 11R22.5 rear tires, shows 1,162,407 miles, 32,741 hours. Notes: Needs assistance to start. Please contact seller for more information. PLEASE ALLOW AT LEAST 60 DAYS FOR TITLE TRANSFER. Item Location: Lewistown, IL 61542 Equipment Sold "AS IS, WHERE IS": All equipment/property is sold "AS IS, WHERE IS" with no warranty or guarantees, expressed or implied, No operational assessments have been made by DPA Auctions on this item, it has been photographed ONLY.



#134 - 2000 Peterbilt 379 Truck (PZ0533, Unit 32626)

2000 Peterbilt 379 Truck (PZ0533, Unit 32626), Cummins N14 Plus diesel engine, RTLO transmission, air conditioning, heat, Am/Fm CD stereo, cruise control, engine brake, Unibuilt sleeper, tandem axle, full screw, air ride suspension, 5th wheel, 295/75R22.5 tires, aluminum rims, rear fenders, shows 1,060,217. Notes: PLEASE ALLOW AT LEAST 60 DAYS FOR TITLE TRANSFER. Item Location: Agency, IA 52530 Equipment Sold "AS IS, WHERE IS": All equipment/property is sold "AS IS, WHERE IS" with no warranty or guarantees, expressed or implied, No operational assessments have been made by DPA Auctions on this item, it has been photographed ONLY.



#135 - Waconia Conveyor (PZ0613)

Waconia Conveyor (PZ0613), Waconia approx. 44' stainless steel belt conveyor, electric motor, cord, portable. Notes: Item Location: Pinckneyville, IL 62274 Equipment Sold "AS IS, WHERE IS": All equipment/property is sold "AS IS, WHERE IS" with no warranty or guarantees, expressed or implied, No operational assessments have been made by DPA Auctions on this item, it has been photographed ONLY.



#137 - 2015 John Deere 26G Mini Excavator (PZ0610)

2015 John Deere 26G Mini Excavator (PZ0610), 2015 John Deere 26G mini excavator, diesel engine, canopy lights, straight blade, extra bucket, rubber tracks, shows 147 hours. Notes: Excellent condition. Item Location: Lacona, IA 50139 Equipment Sold "AS IS, WHERE IS": All equipment/property is sold "AS IS, WHERE IS" with no warranty or guarantees, expressed or implied, No operational assessments have been made by DPA Auctions on this item, it has been photographed ONLY.



#138 - 1995 Ford L8000 Petroleum Truck (PZ0453, Unit 2)

1995 Ford L8000 Petroleum Truck (PZ0453, Unit 2), Cummins 8.3L L6 diesel engine, 9 speed transmission, air conditioning, heat, Am/Fm radio, tandem axle, full screw, air ride suspension, 1995 New Progress 4200 gallon 4 compartment (600-1500-1500-600) petroleum body (S/N 39058), 2 - Lectro Count LCR-II meters, Schlumberger pumps, 2 - electric hose reels with hose, FloTech model FT208 retain/overflow monitor, 4 - side discharge ports, Michelin 11R24.5 tires, 12,000lb front axle, 21,000lb rear axles, shows 396,716 miles. Notes: Item Location: Baldwin, IL 62217 Equipment Sold "AS IS, WHERE IS": All equipment/property is sold "AS IS, WHERE IS" with no warranty or guarantees, expressed or implied, No operational assessments have been made by DPA Auctions on this item, it has been photographed ONLY.



#139 - 2005 GVM Predator 1146T Spreader (PD973)

2005 GVM Predator 1146T Spreader (PD973), 5.9L Cummins, Automatic, Air, AM/FM, Raven 660 Controller w/ GPS Speed sensor, 6 Ton capacity, air seat, has one year old belt over chain in box, has lime or fertilizer chute for back, additional 18.4/46 floaters, still in use, shows 4810 hours. Notes: Item Location: Owensville, MO 65066 Equipment Sold "AS IS, WHERE IS": All equipment/property is sold "AS IS, WHERE IS" with no warranty or guarantees, expressed or implied, No operational assessments have been made by DPA Auctions on this item, it has been photographed ONLY.



#140 - JLG 110 HX Manlift (TR5968)

JLG 110 HX Manlift (TR5968), Ford industrial gas engine, man basket (500 lb. capacity), hydrostatic drive, 4x4, all wheel steer, front swing boom, ground and platform controls, all terrain foam filled tires, shows 1027 hours. Notes: Engine is not running at this time. Being sold as a non-runner. Item Location: Dayton, IA 50530 Equipment Sold "AS IS, WHERE IS": All equipment/property is sold "AS IS, WHERE IS" with no warranty or guarantees, expressed or implied, No operational assessments have been made by DPA Auctions on this item, it has been photographed ONLY.



#141 - Wabco 440 H Motor Grader (TR5970)

Wabco 440 H Motor Grader (TR5970), Cummins diesel engine, engine model number HC-135-C1, engine S/N: 458786, ROPS, cab controls for tilt and lift. Notes: Has not been operated for approximately 1 year. Item Location: Dayton, IA 50530 Equipment Sold "AS IS, WHERE IS": All equipment/property is sold "AS IS, WHERE IS" with no warranty or guarantees, expressed or implied, No operational assessments have been made by DPA Auctions on this item, it has been photographed ONLY.



#142 - Allis Chalmers WD Tractor (TR5971)

Allis Chalmers WD Tractor (TR5971), gas engine, 4 speed manual transmission, narrow front, hydraulic out, 3 point rear hitch, 540 pto, 13.6-28 rear tires. Notes: Motor is stuck. Being sold as a non-runner. Item Location: Dayton, IA 50530 Equipment Sold "AS IS, WHERE IS": All equipment/property is sold "AS IS, WHERE IS" with no warranty or guarantees, expressed or implied, No operational assessments have been made by DPA Auctions on this item, it has been photographed ONLY.



#143 - 2002 IHC 8100 Van Truck (PZ0583)

2002 IHC 8100 Van Truck (PZ0583), Cummins L10 diesel engine, 10 speed transmission, air conditioning, heat, Am/Fm cassette radio, cruise control, tandem axle, full screw, air ride suspension, 2003 Morgan model GVSD09126096RT van body, inside dimensions 310"x91"-88", roll up door, Maxon lift, 295/75R22.5 tires, shows 179,732 miles. Notes: Crack in glass. Item Location: Waterloo, IA 50703 Equipment Sold "AS IS, WHERE IS": All equipment/property is sold "AS IS, WHERE IS" with no warranty or guarantees, expressed or implied, No operational assessments have been made by DPA Auctions on this item, it has been photographed ONLY.



#144 - 2001 Dodge Ram 2500 Pickup (PZ0588)

2001 Dodge Ram 2500 Pickup (PZ0588), 4x4, Cummins Turbo diesel engine, automatic transmission, air conditioning, heat, Am/Fm cassette radio, cruise control, power windows & locks, running boards, LT265/75R16 tires, shows 436,846 miles. Notes: Item Location: Waterloo, IA 50703 Equipment Sold "AS IS, WHERE IS": All equipment/property is sold "AS IS, WHERE IS" with no warranty or guarantees, expressed or implied, No operational assessments have been made by DPA Auctions on this item, it has been photographed ONLY.



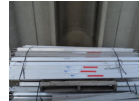
#145 - New Lift A Deck Decking Beam (PZ0584)

New Lift A Deck Decking Beam (PZ0584), 2 - Pallets of Never Used decking beams, approx. 40 per pallet. Notes: Item Location: Waterloo, IA 50703 Equipment Sold "AS IS, WHERE IS": All equipment/property is sold "AS IS, WHERE IS" with no warranty or guarantees, expressed or implied, No operational assessments have been made by DPA Auctions on this item, it has been photographed ONLY.



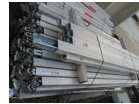
#146 - New Lift A Deck Decking Beam (PZ0585)

New Lift A Deck Decking Beam (PZ0585), 2 - Pallets of Never Used decking beams, approx. 40 per pallet. Notes: Item Location: Waterloo, IA 50703 Equipment Sold "AS IS, WHERE IS": All equipment/property is sold "AS IS, WHERE IS" with no warranty or guarantees, expressed or implied, No operational assessments have been made by DPA Auctions on this item, it has been photographed ONLY.



#147 - New Lift A Deck Decking Beam (PZ0586)

New Lift A Deck Decking Beam (PZ0586), 2 - Pallets of Never Used decking beams, approx. 40 per pallet. Notes: Item Location: Waterloo, IA 50703 Equipment Sold "AS IS, WHERE IS": All equipment/property is sold "AS IS, WHERE IS" with no warranty or guarantees, expressed or implied, No operational assessments have been made by DPA Auctions on this item, it has been photographed ONLY.



#148 - New Lift A Deck Decking Beam (PZ0587)

New Lift A Deck Decking Beam (PZ0587), 2 - Pallets of Never Used decking beams, approx. 40 per pallet. Notes: Item Location: Waterloo, IA 50703 Equipment Sold "AS IS, WHERE IS": All equipment/property is sold "AS IS, WHERE IS" with no warranty or guarantees, expressed or implied, No operational assessments have been made by DPA Auctions on this item, it has been photographed ONLY.



#149 - Fittings (PZ0600)

Fittings (PZ0600), Box of various sizes of fittings. Notes: To many to list, please call seller for more information. Item Location: Waterloo, IA 50703 Equipment Sold "AS IS, WHERE IS": All equipment/property is sold "AS IS, WHERE IS" with no warranty or guarantees, expressed or implied, No operational assessments have been made by DPA Auctions on this item, it has been photographed ONLY.



#150 - 1987 Peterbilt 357 Spray Truck (PD972)

1987 Peterbilt 357 Spray Truck (PD972), L10 Cummins engine, 7 double low transmissions, 20 foot flatbed, 3200 gallon steel tank with baffles, top manhole access handler, 2 inductor, Honda pump, work lights on back, all 2 inch plumbing, holds 3 275 gallon totes for chemical, pintel hitch on back. Notes: Item Location: Owensville, MO 65066 Equipment Sold "AS IS, WHERE IS": All equipment/property is sold "AS IS, WHERE IS" with no warranty or guarantees, expressed or implied, No operational assessments have been made by DPA Auctions on this item, it has been photographed ONLY.



#151 - John Deere 624K (TR6089)

John Deere 624K (TR6089), John Deere diesel engine, 3 speed shuttle shift transmission, cab, heat, air conditioning, finger tip controls, digital gauge panel, Am/Fm radio, 105" front bucket, near new cutting edge, 3 rear counter weights, shows 10155 hour. Notes: Super clean loader. Item Location: Elbow Lake, MN 56531 Equipment Sold "AS IS, WHERE IS": All equipment/property is sold "AS IS, WHERE IS" with no warranty or guarantees, expressed or implied, No operational assessments have been made by DPA Auctions on this item, it has been photographed ONLY.



#152 - Nh3 Nurse Tank (DR0456 Unit 137)

Nh3 Nurse Tank (DR0456 Unit 137), 1000 gallon top front fill tank, data tag, Duo Lift high rise running gear, set up on narrow 60" centers, rear hitch, 11L-15 tires. Notes: Complete Dispersal of Nh3 division. Item Location: Dixon, NE 68732 Equipment Sold "AS IS, WHERE IS": All equipment/property is sold "AS IS, WHERE IS" with no warranty or guarantees, expressed or implied, No operational assessments have been made by DPA Auctions on this item, it has been photographed ONLY.



#153 - Nh3 Nurse Tank (DR0457 Unit 141)

Nh3 Nurse Tank (DR0457 Unit 141), 1000 gallon top front fill tank, data tag, Duo Lift high rise running gear, set up on narrow 60" centers, rear hitch, 11L-15 tires. Notes: Complete Dispersal of Nh3 division. Item Location: Dixon, NE 68732 Equipment Sold "AS IS, WHERE IS": All equipment/property is sold "AS IS, WHERE IS" with no warranty or guarantees, expressed or implied, No operational assessments have been made by DPA Auctions on this item, it has been photographed ONLY.



#154 - Nh3 Nurse Tank (DR0458 Unit 310)

Nh3 Nurse Tank (DR0458 Unit 310), 1000 gallon top front fill tank, data tag, 5th wheel style running gear, rear hitch, 12.5L-15 tires. Notes: Complete Dispersal of Nh3 division. Item Location: Dixon, NE 68732 Equipment Sold "AS IS, WHERE IS": All equipment/property is sold "AS IS, WHERE IS" with no warranty or guarantees, expressed or implied, No operational assessments have been made by DPA Auctions on this item, it has been photographed ONLY.



#155 - Nh3 Nurse Tank (DR0459 Unit 145)

Nh3 Nurse Tank (DR0459 Unit 145), 1000 gallon top front fill tank, data tag, 5th wheel style running gear, rear hitch, 11L-15 tires. Notes: Complete Dispersal of Nh3 division. Item Location: Dixon, NE 68732 Equipment Sold "AS IS, WHERE IS": All equipment/property is sold "AS IS, WHERE IS" with no warranty or guarantees, expressed or implied, No operational assessments have been made by DPA Auctions on this item, it has been photographed ONLY.



#156 - Nh3 Nurse Tank (DR0460 Unit 59)

Nh3 Nurse Tank (DR0460 Unit 59), 1000 gallon top front fill tank, data tag, bolster style running gear, rear hitch, 11L-15 tires. Notes: Complete Dispersal of Nh3 division. Item Location: Dixon, NE 68732 Equipment Sold "AS IS, WHERE IS": All equipment/property is sold "AS IS, WHERE IS" with no warranty or guarantees, expressed or implied, No operational assessments have been made by DPA Auctions on this item, it has been photographed ONLY.



#157 - Nh3 Nurse Tank (DR0461 Unit 110)

Nh3 Nurse Tank (DR0461 Unit 110), 1000 gallon top front fill tank, data tag, 5th wheel style running gear, rear hitch, 11L-15 tires. Notes: Complete Dispersal of Nh3 division. Item Location: Dixon, NE 68732 Equipment Sold "AS IS, WHERE IS": All equipment/property is sold "AS IS, WHERE IS" with no warranty or guarantees, expressed or implied, No operational assessments have been made by DPA Auctions on this item, it has been photographed ONLY.



#158 - Nh3 Nurse Tank (DR0462 Unit 309)

Nh3 Nurse Tank (DR0462 Unit 309), 1000 gallon top front fill tank, data tag, 5th wheel style running gear, rear hitch, 11L-15 tires. Notes: Complete Dispersal of Nh3 division. Item Location: Dixon, NE 68732 Equipment Sold "AS IS, WHERE IS": All equipment/property is sold "AS IS, WHERE IS" with no warranty or guarantees, expressed or implied, No operational assessments have been made by DPA Auctions on this item, it has been photographed ONLY.



#159 - Nh3 Nurse Tank (DR0463 Unit 139)

Nh3 Nurse Tank (DR0463 Unit 139), 1000 gallon top front fill tank, data tag, Duo Lift high rise running gear, set up on narrow 60" centers, rear hitch, 11L-15 tires. Notes: Complete Dispersal of Nh3 division. Item Location: Dixon, NE 68732 Equipment Sold "AS IS, WHERE IS": All equipment/property is sold "AS IS, WHERE IS" with no warranty or guarantees, expressed or implied, No operational assessments have been made by DPA Auctions on this item, it has been photographed ONLY.



#160 - 5 Freestanding Panels (MH311)

5 Freestanding Panels (MH311), TH Custom Manufacturing Freestanding Panels, full frame design built from 2-7/8" pipe, 24ft long by 5'9" tall, 7/8 rod ran through the uprights to prevent sharp edges, bent legs to prevent panel from sliding and to allow sturdy placement, saddle cuts on all uprights, drain holes on all uprights to prevent rusting from within the pipe, double chains standard on all panels. Notes: Shipping available anywhere in the U.S for additional charge. Item Location: Canistota, SD 57012 Equipment Sold "AS IS, WHERE IS": All equipment/property is sold "AS IS, WHERE IS" with no warranty or guarantees, expressed or implied, No operational assessments have been made by DPA Auctions on this item, it has been photographed ONLY.



#161 - 5 Freestanding Panels (MH312)

5 Freestanding Panels (MH312), TH Custom Manufacturing Freestanding Panels, full frame design built from 2-7/8" pipe, 24ft long by 5'9" tall, 7/8 rod ran through the uprights to prevent sharp edges, bent legs to prevent panel from sliding and to allow sturdy placement, saddle cuts on all uprights, drain holes on all uprights to prevent rusting from within the pipe, double chains standard on all panels. Notes: Shipping available anywhere in the U.S for additional charge. Item Location: Canistota, SD 57012 Equipment Sold "AS IS, WHERE IS": All equipment/property is sold "AS IS, WHERE IS" with no warranty or guarantees, expressed or implied, No operational assessments have been made by DPA Auctions on this item, it has been photographed ONLY.



#162 - 1984 H&H (DR0183)

1984 H&H (DR0183), triple axle gooseneck trailer, 22' deck, 4' beaver tail, rear fold down ramps, side winch boxes and straps, 235/85R16 tires. Notes: Item Location: Olivia, MN 56277 Equipment Sold "AS IS, WHERE IS": All equipment/property is sold "AS IS, WHERE IS" with no warranty or guarantees, expressed or implied, No operational assessments have been made by DPA Auctions on this item, it has been photographed ONLY.



#163 - 1990 Redihaul (DR0184)

1990 Redihaul (DR0184), tandem axle gooseneck hitch sprayer trailer, removable outriggers, rear fold down ramps, 21' bed 13' pans, 9.50-16 tires. Notes: Item Location: Olivia, MN 56277 Equipment Sold "AS IS, WHERE IS": All equipment/property is sold "AS IS, WHERE IS" with no warranty or guarantees, expressed or implied, No operational assessments have been made by DPA Auctions on this item, it has been photographed ONLY.



#164 - 1990 Redihaul (DR0185)

1990 Redihaul (DR0185), tandem axle gooseneck hitch sprayer trailer, removable outriggers, rear fold down ramps, 21' bed 13' pans, 9.50-16 tires. Notes: Item Location: Olivia, MN 56277 Equipment Sold "AS IS, WHERE IS": All equipment/property is sold "AS IS, WHERE IS" with no warranty or guarantees, expressed or implied, No operational assessments have been made by DPA Auctions on this item, it has been photographed ONLY.



#165 - 2004 Shopbuilt (DR0186)

2004 Shopbuilt (DR0186), heavy duty tandem axle gooseneck sprayer trailer, removable outriggers, rear fold down ramps, 16.5' bed, 7.00-15 tires. Notes: Item Location: Olivia, MN 56277 Equipment Sold "AS IS, WHERE IS": All equipment/property is sold "AS IS, WHERE IS" with no warranty or guarantees, expressed or implied, No operational assessments have been made by DPA Auctions on this item, it has been photographed ONLY.



#166 - 1972 Lufkin (DR0173)

1972 Lufkin (DR0173), 40' tandem axle van trailer, rear roll up door, sliding tandem axles, interior shelving, 24.5 tires. Notes: Item Location: Olivia, MN 56277 Equipment Sold "AS IS, WHERE IS": All equipment/property is sold "AS IS, WHERE IS" with no warranty or guarantees, expressed or implied, No operational assessments have been made by DPA Auctions on this item, it has been photographed ONLY.



#167 - 5 Freestanding Panels (MH313)

5 Freestanding Panels (MH313), TH Custom Manufacturing Freestanding Panels, full frame design built from 2-7/8" pipe, 24ft long by 5'9" tall, 7/8 rod ran through the uprights to prevent sharp edges, bent legs to prevent panel from sliding and to allow sturdy placement, saddle cuts on all uprights, drain holes on all uprights to prevent rusting from within the pipe, double chains standard on all panels. Notes: Shipping available anywhere in the U.S for additional charge. Item Location: Canistota, SD 57012 Equipment Sold "AS IS, WHERE IS": All equipment/property is sold "AS IS, WHERE IS" with no warranty or guarantees, expressed or implied, No operational assessments have been made by DPA Auctions on this item, it has been photographed ONLY.



#168 - Hyster Forklift (PZ0589)

Hyster Forklift (PZ0589), Hyster model S60B forklift, LP gas engine, shuttle shift transmission, canopy. Notes: LP tank NOT included, needs battery. Item Location: Waterloo, IA 50703 Equipment Sold "AS IS, WHERE IS": All equipment/property is sold "AS IS, WHERE IS" with no warranty or guarantees, expressed or implied, No operational assessments have been made by DPA Auctions on this item, it has been photographed ONLY.



#169 - 2012 Brenner Petroleum Tank (PZ0581)

2012 Brenner Petroleum Tank (PZ0581), 2012 Brenner Never been used 3000 gallon 5 compartment (800-700-600-500-400) aluminum petroleum tank. Notes: Running gear NOT included. Item Location: Waterloo, IA 50703 Equipment Sold "AS IS, WHERE IS": All equipment/property is sold "AS IS, WHERE IS" with no warranty or guarantees, expressed or implied, No operational assessments have been made by DPA Auctions on this item, it has been photographed ONLY.



#170 - Axles (PZ0544)

Axles (PZ0544), 2 - axles, 18.4-16A flotation tires. Notes: Item Location: Macomb, IL 61455 Equipment Sold "AS IS, WHERE IS": All equipment/property is sold "AS IS, WHERE IS" with no warranty or guarantees, expressed or implied, No operational assessments have been made by DPA Auctions on this item, it has been photographed ONLY.



#171 - Dry Blender (PZ0568)

Dry Blender (PZ0568), 8 ton dry drum mixer, hopper, Layco stainless steel loadout conveyor, 420HE digital readout, control panel. Notes: Item Location: Adair, IL 61411 Equipment Sold "AS IS, WHERE IS": All equipment/property is sold "AS IS, WHERE IS" with no warranty or guarantees, expressed or implied, No operational assessments have been made by DPA Auctions on this item, it has been photographed ONLY.



#172 - Doyle Belt Conveyor (PZ0569)

Doyle Belt Conveyor (PZ0569), Doyle 24" stainless steel belt conveyor, Toshiba 10 hp electric motor, portable, ST205/75R15 tires. Notes: Item Location: Adair, IL 61411 Equipment Sold "AS IS, WHERE IS": All equipment/property is sold "AS IS, WHERE IS" with no warranty or guarantees, expressed or implied, No operational assessments have been made by DPA Auctions on this item, it has been photographed ONLY.



#173 - Doyle Undercar Conveyor (PZ0570)

Doyle Undercar Conveyor (PZ0570), Doyle 24" stainless steel undercar conveyor, control box, electric cord. Notes: Conveyor has Bad motor. Item Location: Lewistown, IL 61542 Equipment Sold "AS IS, WHERE IS": All equipment/property is sold "AS IS, WHERE IS" with no warranty or guarantees, expressed or implied, No operational assessments have been made by DPA Auctions on this item, it has been photographed ONLY.



#174 - Clark C500-50 Forklift (PZ0560)

Clark C500-50 Forklift (PZ0560), Clark model C500-50 forklift, LP gas engine, shuttle shift transmission, canopy, lights, side shift, shows 9167 hours. Notes: LP tank NOT included. Item Location: Adair, IL 61411 Equipment Sold "AS IS, WHERE IS": All equipment/property is sold "AS IS, WHERE IS" with no warranty or guarantees, expressed or implied, No operational assessments have been made by DPA Auctions on this item, it has been photographed ONLY.



#175 - 1995 Kenworth T800 Truck (DR0741)

1995 Kenworth T800 Truck (DR0741), 3406 Cat diesel engine, 18 speed transmission, 13,600# steerable pusher axle, heavy duty drive line, NEW 5th wheel plate, fresh filters & lube, dual chrome stacks, dual polished aluminum fuel tanks, all aluminum wheels, 3/4" rear steel plate w/ 3" receiver hitch & pintle hitch, 340,000 ACTUAL miles. Notes: Item Location: Elbow Lake, MN 56531 Equipment Sold "AS IS, WHERE IS": All equipment/property is sold "AS IS, WHERE IS" with no warranty or guarantees, expressed or implied, No operational assessments have been made by DPA Auctions on this item, it has been photographed ONLY.



#176 - 1984 International 1900 Flatbed Truck (TR6090)

1984 International 1900 Flatbed Truck (TR6090), DT466 diesel engine, 5 speed transmission, 2 speed rear axle, 17.5' steel flatbed, hydraulic knuckle boom, dual hydraulic outriggers, dual side controls, rear receiver hitch, frame mounted storage box, 11R22.5 tires. Notes: Item Location: Elbow Lake, MN 56531 Equipment Sold "AS IS, WHERE IS": All equipment/property is sold "AS IS, WHERE IS" with no warranty or guarantees, expressed or implied, No operational assessments have been made by DPA Auctions on this item, it has been photographed ONLY.



#177 - 1994 Utility (DR0174)

1994 Utility (DR0174), 48' dry van trailer, sliding tandem axles, rear cargo doors, light panel roof, 10.00-20 tires. Notes: Item Location: Olivia, MN 56277 Equipment Sold "AS IS, WHERE IS": All equipment/property is sold "AS IS, WHERE IS" with no warranty or guarantees, expressed or implied, No operational assessments have been made by DPA Auctions on this item, it has been photographed ONLY.



#178 - 1985 Ford 8000 (DR0172)

1985 Ford 8000 (DR0172), Cat diesel engine, 7 speed transmission, single axle w/tag, air brakes, 21' steel grain box & hoist, barn door end gate w/double grain gates, roll over tarp, Am/FM radio, 22.5 tires, shows 125,862 miles. Notes: Item Location: Olivia, MN 56277 Equipment Sold "AS IS, WHERE IS": All equipment/property is sold "AS IS, WHERE IS" with no warranty or guarantees, expressed or implied, No operational assessments have been made by DPA Auctions on this item, it has been photographed ONLY.



#179 - 2000 PDF Gooseneck Trailer (PZ0251)

2000 PDF Gooseneck Trailer (PZ0251), 2000 PDF model 20GT-120LN gooseneck trailer, 20' rails, 4' flip down ramps, tandem axle, LT235/85R16 tires, T-Max 10000 winch. Notes: Item Location: Grand Ridge, IL 61325 Equipment Sold "AS IS, WHERE IS": All equipment/property is sold "AS IS, WHERE IS" with no warranty or guarantees, expressed or implied, No operational assessments have been made by DPA Auctions on this item, it has been photographed ONLY.



#180 - 2009 B-B Gooseneck Trailer (PZ0252)

2009 B-B Gooseneck Trailer (PZ0252), 2009 B-B model HST90EGN gooseneck trailer, approx. 21'5 flip down rails, 4' flip down ramps, D rings, tandem axle, dual wheels, ST235/80R16 tires. Notes: Item Location: Grand Ridge, IL 61325 Equipment Sold "AS IS, WHERE IS": All equipment/property is sold "AS IS, WHERE IS" with no warranty or guarantees, expressed or implied, No operational assessments have been made by DPA Auctions on this item, it has been photographed ONLY.



#181 - 2008 B-B Gooseneck Trailer (PZ0253)

2008 B-B Gooseneck Trailer (PZ0253), 2008 B-B gooseneck trailer, 25' adjustable rails, 4' flip down ramps, approx. 28' top deck, tandem axle, 215/75R17.5 tires. Notes: Item Location: Grand Ridge, IL 61325 Equipment Sold "AS IS, WHERE IS": All equipment/property is sold "AS IS, WHERE IS" with no warranty or guarantees, expressed or implied, No operational assessments have been made by DPA Auctions on this item, it has been photographed ONLY.



#182 - 1990 Maclander Gooseneck Trailer (PZ0254)

1990 Maclander Gooseneck Trailer (PZ0254), 1990 Maclander gooseneck trailer, approx. 32' top wood deck, 5' beaver tail, flip down ramps, D rings, tandem axle, 9.50-16.5LT tires. Notes: Item Location: Grand Ridge, IL 61325 Equipment Sold "AS IS, WHERE IS": All equipment/property is sold "AS IS, WHERE IS" with no warranty or guarantees, expressed or implied, No operational assessments have been made by DPA Auctions on this item, it has been photographed ONLY.



#183 - 2009 Homemade Trailer (PZ0255)

2009 Homemade Trailer (PZ0255), Homemade single axle trailer, 5' wide, 8' long, D rings, 5.30-12 tires. Notes: Item Location: Grand Ridge, IL 61325 Equipment Sold "AS IS, WHERE IS": All equipment/property is sold "AS IS, WHERE IS" with no warranty or guarantees, expressed or implied, No operational assessments have been made by DPA Auctions on this item, it has been photographed ONLY.



#184 - 1978 International 2575 (TR6081 Unit 4494)

1978 International 2575 (TR6081 Unit 4494), cab/chassis, Cummins diesel engine, 10 speed transmission, tandem axle full screw, AM/FM radio, air brakes, shows 726,591 miles, 24.5 tires. Notes: Item Location: Logan, IA 51546 Equipment Sold "AS IS, WHERE IS": All equipment/property is sold "AS IS, WHERE IS" with no warranty or guarantees, expressed or implied, No operational assessments have been made by DPA Auctions on this item, it has been photographed ONLY.



#186 - 1988 Freightliner Classis (TR6082 Unit 4488)

1988 Freightliner Classis (TR6082 Unit 4488), Cummins diesel engine, 9 speed transmission, tandem axle full screw, 3000 gallon crown poly liquid tank, PTO pump, dual aluminum fuel tanks, 1 is set up for off road fuel w/12 volt pump, shuttle rack, AM/FM CD radio, air conditioning, 24.5 tires, shows 679,485 miles. Notes: Item Location: Logan, IA 51546 Equipment Sold "AS IS, WHERE IS": All equipment/property is sold "AS IS, WHERE IS" with no warranty or guarantees, expressed or implied, No operational assessments have been made by DPA Auctions on this item, it has been photographed ONLY.



#187 - 2002 Kohler 80RZG Power System Generator (PZ0611)

2002 Kohler 80RZG Power System Generator (PZ0611), 2002 Kohler 80RZG power system generator, General Motors 8.1 engine, 8 Liter 4 cylinder Vortec 8.1 electric start (S/N 06542), natural gas, 8.1L/496 cu in displacement, 80 KW rating, 100 KVA rating, dual voltage 120/208 or 277/480, 300 amps 3 phase, wide model = 94.5" long, 40.9" wide, 58.4" high, 2,500 lbs with fluids, comes with 2 transfer switches = 400 amp and 104 amp, 367.9 hours on the transfer switches, this is actual run time of the generator when in use, battery reconitioner, block heater, engine re-circulator, comes with manuals, can be converted to LP, shows 454.4 hours. Notes: Item Location: Aledo, IL 61231 Equipment Sold "AS IS, WHERE IS": All equipment/property is sold "AS IS, WHERE IS" with no warranty or guarantees, expressed or implied, No operational assessments have been made by DPA Auctions on this item, it has been photographed ONLY.



#188 - Bobcat 863 Skid Steer (PD985)

Bobcat 863 Skid Steer (PD985), 2047 hours, 73 H.P., Deutz diesel engine, foot controls, foam filled tires, high flow turbo, bucket is 72. Notes: Still in use. Item Location: Blencoe, IA 51523 Equipment Sold "AS IS, WHERE IS": All equipment/property is sold "AS IS, WHERE IS" with no warranty or guarantees, expressed or implied, No operational assessments have been made by DPA Auctions on this item, it has been photographed ONLY.



#189 - Nh3 Nurse Tank (DR0464 Unit 126)

Nh3 Nurse Tank (DR0464 Unit 126), 1000 gallon top front fill tank, data tag, Duo Lift high rise running gear, set up for narrow 60" centers, rear hitch, 11L-15 tires. Nh3 Nurse Tank (DR0464 Unit 126), 1000 gallon top front fill tank, data tag, Duo Lift high rise running gear, set up for narrow 60" centers, rear hitch, 11L-15 tires. Notes: Complete Dispersal of Nh3 division. Item Location: Dixon, NE 68732 Equipment Sold "AS IS, WHERE IS": All equipment/property is sold "AS IS, WHERE IS" with no warranty or guarantees, expressed or implied, No operational assessments have been made by DPA Auctions on this item, it has been photographed ONLY.



#190 - Nh3 Nurse Tank (DR0465 Unit 140)

Nh3 Nurse Tank (DR0465 Unit 140), 1000 gallon extreme front fill tank, data tag, Duo Lift high rise running gear, set up on narrow 60" centers, rear hitch, 11L-15 tires. Notes: Complete Dispersal of Nh3 division. Item Location: Dixon, NE 68732 Equipment Sold "AS IS, WHERE IS": All equipment/property is sold "AS IS, WHERE IS" with no warranty or guarantees, expressed or implied, No operational assessments have been made by DPA Auctions on this item, it has been photographed ONLY.



#191 - Nh3 Nurse Tank (DR0466 Unit 108)

Nh3 Nurse Tank (DR0466 Unit 108), 1000 gallon top front fill tank, data tag, 5th wheel style running gear, set up for narrow 60" centers, rear hitch, 11L-15 tires. Notes: Complete Dispersal of Nh3 division. Item Location: Dixon, NE 68732 Equipment Sold "AS IS, WHERE IS": All equipment/property is sold "AS IS, WHERE IS" with no warranty or guarantees, expressed or implied, No operational assessments have been made by DPA Auctions on this item, it has been photographed ONLY.



#192 - Double Nh3 Nurse Tank (DR0467 Unit 128)

Double Nh3 Nurse Tank (DR0467 Unit 128), double 1000 gallon top front fill tanks, data tags, Duo lift gooseneck gear, rear hitch, 385/65R22.5 tires. Notes: Complete Dispersal of Nh3 division. Item Location: Dixon, NE 68732 Equipment Sold "AS IS, WHERE IS": All equipment/property is sold "AS IS, WHERE IS" with no warranty or guarantees, expressed or implied, No operational assessments have been made by DPA Auctions on this item, it has been photographed ONLY.



#193 - Nh3 Nurse Tank (DR0468 Unit 15)

Nh3 Nurse Tank (DR0468 Unit 15), 1000 gallon extreme front fill tank, data tag, Duo Lift high rise adjustable axle running gear, rear hitch, 11L-15 tires. Notes: Complete Dispersal of Nh3 division. Item Location: Dixon, NE 68732 Equipment Sold "AS IS, WHERE IS": All equipment/property is sold "AS IS, WHERE IS" with no warranty or guarantees, expressed or implied, No operational assessments have been made by DPA Auctions on this item, it has been photographed ONLY.



#194 - Nh3 Nurse Tank (DR0469 Unit 43)

Nh3 Nurse Tank (DR0469 Unit 43), 1000 gallon top front fill tank, data tag, Duo Lift high rise adjustable axle running gear, rear hitch, 11L-15 tires. Notes: Complete Dispersal of Nh3 division. Item Location: Dixon, NE 68732 Equipment Sold "AS IS, WHERE IS": All equipment/property is sold "AS IS, WHERE IS" with no warranty or guarantees, expressed or implied, No operational assessments have been made by DPA Auctions on this item, it has been photographed ONLY.



#195 - Double Nh3 Nurse Tank (DR0470)

Double Nh3 Nurse Tank (DR0470), double 1000 gallon top front fill tanks, 1 has data tags, P&H gooseneck gear, rear hitch, 14L-16.1 tires. Notes: Complete Dispersal of Nh3 division. Item Location: Dixon, NE 68732 Equipment Sold "AS IS, WHERE IS": All equipment/property is sold "AS IS, WHERE IS" with no warranty or guarantees, expressed or implied, No operational assessments have been made by DPA Auctions on this item, it has been photographed ONLY.



#196 - Double Nh3 Nurse Tank (DR0471)

Double Nh3 Nurse Tank (DR0471), double 1000 gallon top center fill tanks, NO data tags, P&H gooseneck gear, rear hitch, 14L-16.1 tires. Notes: Complete Dispersal of Nh3 division. Item Location: Dixon, NE 68732 Equipment Sold "AS IS, WHERE IS": All equipment/property is sold "AS IS, WHERE IS" with no warranty or guarantees, expressed or implied, No operational assessments have been made by DPA Auctions on this item, it has been photographed ONLY.



#197 - Troy Bilt Bronco Lawn Mower (PZ0590)

Troy Bilt Bronco Lawn Mower (PZ0590), Kohler gas engine, hydrostatic transmission, 42" cut. Notes: Item Location: Waterloo, IA 50703 Equipment Sold "AS IS, WHERE IS": All equipment/property is sold "AS IS, WHERE IS" with no warranty or guarantees, expressed or implied, No operational assessments have been made by DPA Auctions on this item, it has been photographed ONLY.



#198 - 1974 Mack RL600L Truck (PZ0582)

1974 Mack RL600L Truck (PZ0582), Mack Maxidyne diesel engine manual transmission, heat, radio, tandem axle, full screw, 5th wheel, 11R22.5 tires, shows 48,671 miles. Notes: Needs batteries. Item Location: Waterloo, IA 50703 Equipment Sold "AS IS, WHERE IS": All equipment/property is sold "AS IS, WHERE IS" with no warranty or guarantees, expressed or implied, No operational assessments have been made by DPA Auctions on this item, it has been photographed ONLY.



#199 - Undercarriage (PZ0580)

Undercarriage (PZ0580) Never used truck undercarriage, 23,000lb suspension, 16" ride height, 71" track, air ride suspension, 11R22.5 tires. Notes: Item Location: Waterloo, IA 50703 Equipment Sold "AS IS, WHERE IS": All equipment/property is sold "AS IS, WHERE IS" with no warranty or guarantees, expressed or implied, No operational assessments have been made by DPA Auctions on this item, it has been photographed ONLY.



#200 - Blu Jet Tool Bar (PZ0605)

Blu Jet Tool Bar (PZ0605), Blu Jet 13 knife pull type tool bar, coulters, notched double disc sealers, Raven Super cooler, hydraulic wings, walking tandems, flotation tires, rear hitch. Notes: Item Location: Dysart, IA 52224 Equipment Sold "AS IS, WHERE IS": All equipment/property is sold "AS IS, WHERE IS" with no warranty or guarantees, expressed or implied, No operational assessments have been made by DPA Auctions on this item, it has been photographed ONLY.



#201 - Blu Jet Tool Bar (PZ0606, Unit 6)

Blu Jet Tool Bar (PZ0606, Unit 6), Blu Jet 11 knife pull type tool bar, coulters, double disc sealers, Raven Super cooler, hydraulic wings, 11L-15SL flotation tires, rear hitch. Notes: Item Location: Dysart, IA 52224 Equipment Sold "AS IS, WHERE IS": All equipment/property is sold "AS IS, WHERE IS" with no warranty or guarantees, expressed or implied, No operational assessments have been made by DPA Auctions on this item, it has been photographed ONLY.



#202 - DMI Tool Bar (PZ0607, Unit 2)

DMI Tool Bar (PZ0607, Unit 2), DMI 4100 13 knife pull type tool bar, coulters, double disc sealers, Raven Super cooler, hydraulic wings, 12.5L-15 flotation tires, rear hitch. Notes: Item Location: Dysart, IA 52224 Equipment Sold "AS IS, WHERE IS": All equipment/property is sold "AS IS, WHERE IS" with no warranty or guarantees, expressed or implied, No operational assessments have been made by DPA Auctions on this item, it has been photographed ONLY.



#203 - 2014 Ford F-150 SuperCrew 4x4 (KMK663, Unit 01729)

2014 Ford F-150 SuperCrew 4x4 (KMK663, Unit 01729), XLT, SuperCrew, EcoBoost, V6 gas engine, automatic transmission, 4X4, cruise control, tow package, Leer topper, heat and air conditioning, power windows, power locks, power seat, Toyo A/T Open Country tires, full size spare tire, shows 233,659 miles. Notes: Check engine light is on. Engine has a bad miss. PLEASE ALLOW AT LEAST 60 DAYS FOR TITLE TRANSFER. Item Location: Williston, ND 58801 Equipment Sold "AS IS, WHERE IS": All equipment/property is sold "AS IS, WHERE IS" with no warranty or guarantees, expressed or implied, No operational assessments have been made by DPA Auctions on this item, it has been photographed ONLY.



#204 - 1990 Clark CGP 25 Forklift (KMK662, Unit 93198)

1990 Clark CGP 25 Forklift (KMK662, Unit 93198), model CGP 25, LP gas engine, shuttle shift transmission, canopy, truck weight 9,118, 189" lift height, 4,200 lb. capacity. Notes: Unit has leaks, brake and transmission issues. Item Location: Williston, ND 58801 Equipment Sold "AS IS, WHERE IS": All equipment/property is sold "AS IS, WHERE IS" with no warranty or guarantees, expressed or implied, No operational assessments have been made by DPA Auctions on this item, it has been photographed ONLY.



#205 - Steel Truck Flatbed (NP7167)

Steel Truck Flatbed (NP7167), approx. 102" wide x 18' long. Notes: Item Location: Heartwell, NE 68945 Equipment Sold "AS IS, WHERE IS": All equipment/property is sold "AS IS, WHERE IS" with no warranty or guarantees, expressed or implied, No operational assessments have been made by DPA Auctions on this item, it has been photographed ONLY.



#206 - Titan Tires (PZ0609)

Titan Tires (PZ0609), 2 - Titan LSW 495-826 NHS tires and rims. Notes: Item Location: Monmouth, IL 61462 Equipment Sold "AS IS, WHERE IS": All equipment/property is sold "AS IS, WHERE IS" with no warranty or guarantees, expressed or implied, No operational assessments have been made by DPA Auctions on this item, it has been photographed ONLY.



#207 - Double Nh3 Nurse Tank (DR0472 Unit 129)

Double Nh3 Nurse Tank (DR0472 Unit 129), double 1415 gallon top front fill tanks, data tags, 2014 C&K gooseneck gear, rear hitch, 445/50R22.5 tires. Notes: Complete Dispersal of Nh3 division. Item Location: Dixon, NE 68732 Equipment Sold "AS IS, WHERE IS": All equipment/property is sold "AS IS, WHERE IS" with no warranty or guarantees, expressed or implied, No operational assessments have been made by DPA Auctions on this item, it has been photographed ONLY.



#208 - Double Nh3 Nurse Tank (DR0473 Unit 130)

Double Nh3 Nurse Tank (DR0473 Unit 130), double 1000 gallon top front fill tanks, data tags, 2012 C&K gooseneck gear, 445/50R22.5 tires. Notes: Complete Dispersal of Nh3 division. Item Location: Dixon, NE 68732 Equipment Sold "AS IS, WHERE IS": All equipment/property is sold "AS IS, WHERE IS" with no warranty or guarantees, expressed or implied, No operational assessments have been made by DPA Auctions on this item, it has been photographed ONLY.



#209 - Double Nh3 Nurse Tank (DR0474 Unit 127)

Double Nh3 Nurse Tank (DR0474 Unit 127), double 1000 gallon top front fill tanks, data tags, 2012 C&K gooseneck gear, 445/50R22.5 tires. Notes: Complete Dispersal of Nh3 division. Item Location: Dixon, NE 68732 Equipment Sold "AS IS, WHERE IS": All equipment/property is sold "AS IS, WHERE IS" with no warranty or guarantees, expressed or implied, No operational assessments have been made by DPA Auctions on this item, it has been photographed ONLY.



#210 - Blu-Jet Tool Bar (DR0476)

Blu-Jet Tool Bar (DR0476), 13 knife pull type tool bar, front coulters, double disc sealers, hydraulic wings, manual gauge wheels, walking tandem axles, Raven cooler, Raven controller. Notes: Complete Dispersal of Nh3 division. Item Location: Dixon, NE 68732 Equipment Sold "AS IS, WHERE IS": All equipment/property is sold "AS IS, WHERE IS" with no warranty or guarantees, expressed or implied, No operational assessments have been made by DPA Auctions on this item, it has been photographed ONLY.



#211 - Blu-Jet Convertible Tool Bar (DR0477)

Blu-Jet Convertible Tool Bar (DR0477), 9 knife pull type tool bar, front coulters, hydraulic wings, manual gauge wheels, Continental flow meter. Notes: Complete Dispersal of Nh3 division. Item Location: Dixon, NE 68732 Equipment Sold "AS IS, WHERE IS": All equipment/property is sold "AS IS, WHERE IS" with no warranty or guarantees, expressed or implied, No operational assessments have been made by DPA Auctions on this item, it has been photographed ONLY.



#212 - Blu-Jet Convertible Tool Bar (DR0478)

Blu-Jet Convertible Tool Bar (DR0478), 11 knife pull type tool bar, front coulters, hydraulic wings, manual gauge wheels, bar is for parts. Notes: Complete Dispersal of Nh3 division. Item Location: Dixon, NE 68732 Equipment Sold "AS IS, WHERE IS": All equipment/property is sold "AS IS, WHERE IS" with no warranty or guarantees, expressed or implied, No operational assessments have been made by DPA Auctions on this item, it has been photographed ONLY.



#213 - Blu-Jet Tool Bar (DR0479)

Blu-Jet Tool Bar (DR0479), 13 knife pull type tool bar, John-blu ground drive pump, front coulters, Yetter double disc notched sealers, hydraulic wings, hydraulic gauge wheels, walking tandem axles. Notes: Complete Dispersal of Nh3 division. Item Location: Dixon, NE 68732 Equipment Sold "AS IS, WHERE IS": All equipment/property is sold "AS IS, WHERE IS" with no warranty or guarantees, expressed or implied, No operational assessments have been made by DPA Auctions on this item, it has been photographed ONLY.



#214 - Blu-Jet Landwalker Tool Bar (DR0480)

Blu-Jet Landwalker Tool Bar (DR0480), 17 knife pull type tool bar, John-blu ground drive pump, front coulters, hydraulic wings, hydraulic gauge wheels, walking tandem axles. Notes: Complete Dispersal of Nh3 division. Item Location: Dixon, NE 68732 Equipment Sold "AS IS, WHERE IS": All equipment/property is sold "AS IS, WHERE IS" with no warranty or guarantees, expressed or implied, No operational assessments have been made by DPA Auctions on this item, it has been photographed ONLY.



#215 - 2008 Blue Water 20BR (CG534)

2008 Blue Water 20BR (CG534), Volvo penta 5.0 liter, Bimini top, in floor storage, fish finder, walk thru transom, tandem axle trailer. Notes: Financing available to qualified buyers. Item Location: Valley, NE 68064 Equipment Sold "AS IS, WHERE IS": All equipment/property is sold "AS IS, WHERE IS" with no warranty or guarantees, expressed or implied, No operational assessments have been made by DPA Auctions on this item, it has been photographed ONLY.



#216 - 2000 HilBilt Mongoose End Dump Trailer (PD982)

2000 HilBilt Mongoose End Dump Trailer (PD982), 32 Foot, tri axle, air tag front axle, air brakes, air ride suspension, Watson suspensions system Model 1A555 -17, tectran tailgate control, 11R22.5 tires, HD50, tarp. Notes: Item Location: Rock Port, MO 64482 Equipment Sold "AS IS, WHERE IS": All equipment/property is sold "AS IS, WHERE IS" with no warranty or guarantees, expressed or implied, No operational assessments have been made by DPA Auctions on this item, it has been photographed ONLY.



#217 - 2010 John Deere 4830 Self-Propelled Sprayer (ED699)

2010 John Deere 4830 Self-Propelled Sprayer (ED699), John Deere 6.8 diesel engine, hydrostat 4 range transmission, heat/AC, AM/FM radio, 1,000 gallon stainless steel solution tank, 100 foot boom, 15" spacing, SS inductor, high volume pump, dual flow meter, 2600 monitor, Starfire globe, 5 tip nozzle bodies, hydraulic tread adjust, foam markers, fence row nozzles, tires 50% tread 380/90R46, floaters included 50% tread 600/65R38, shows left boom needs repaired, engine powers down occasionally, once restarted it runs fine miles, shows 5945 hours. Notes: Floater tires are included with this unit. Item Location: Jasper, IN 47546 Equipment Sold "AS IS, WHERE IS": All equipment/property is sold "AS IS, WHERE IS" with no warranty or guarantees, expressed or implied, No operational assessments have been made by DPA Auctions on this item, it has been photographed ONLY.



#218 - 2005 John Deere 9660 STS Combine (PZ0630)

2005 John Deere 9660 STS Combine (PZ0630), John Deere diesel engine, hydrostatic transmission, air conditioning, heat, Am/Fm radio, dual front tires, John Deere monitor, shows 2826 engine hours, 2059 separator hours. Notes: Always shedded, inspected every year and fixed whatever has needed. Records available. Item Location: Fenton, IL 61251 Equipment Sold "AS IS, WHERE IS": All equipment/property is sold "AS IS, WHERE IS" with no warranty or guarantees, expressed or implied, No operational assessments have been made by DPA Auctions on this item, it has been photographed ONLY.



#219 - Tractor Loader (TH360)

Tractor Loader (TH360), dual #320. Notes: Item Location: Osseo, WI 54758 Equipment Sold "AS IS, WHERE IS": All equipment/property is sold "AS IS, WHERE IS" with no warranty or guarantees, expressed or implied, No operational assessments have been made by DPA Auctions on this item, it has been photographed ONLY.



#220 - Wilmar Dry Fertilizer Bed (TH365)

Wilmar Dry Fertilizer Bed (TH365), 12', hyd, complete with controls. Notes: Truck bed only. Truck is NOT included. Item Location: Osseo, WI 54758 Equipment Sold "AS IS, WHERE IS": All equipment/property is sold "AS IS, WHERE IS" with no warranty or guarantees, expressed or implied, No operational assessments have been made by DPA Auctions on this item, it has been photographed ONLY.



#221 - Truck Feed Bed (TH364)

Truck Feed Bed (TH364), 14', hyd. Notes: Item Location: Osseo, WI 54758 Equipment Sold "AS IS, WHERE IS": All equipment/property is sold "AS IS, WHERE IS" with no warranty or guarantees, expressed or implied, No operational assessments have been made by DPA Auctions on this item, it has been photographed ONLY.



#222 - Kraus Grain Box For Truck (TH363)

Kraus Grain Box For Truck (TH363), 20' long, 96" wide, 96" tall. Notes: Item Location: Osseo, WI 54758 Equipment Sold "AS IS, WHERE IS": All equipment/property is sold "AS IS, WHERE IS" with no warranty or guarantees, expressed or implied, No operational assessments have been made by DPA Auctions on this item, it has been photographed ONLY.



#223 - 3000 Gallon Liquid Tank (TH366)

3000 Gallon Liquid Tank (TH366), 12' long bed, with gas fluid pump. Notes: Truck is NOT included. Item Location: Osseo, WI 54758 Equipment Sold "AS IS, WHERE IS": All equipment/property is sold "AS IS, WHERE IS" with no warranty or guarantees, expressed or implied, No operational assessments have been made by DPA Auctions on this item, it has been photographed ONLY.



#224 - 300 Gallon Fuel Barrel With Pump (TH359)

300 Gallon Fuel Barrel With Pump (TH359), yellow, two walls. Notes: Item Location: Osseo, WI 54758 Equipment Sold "AS IS, WHERE IS": All equipment/property is sold "AS IS, WHERE IS" with no warranty or guarantees, expressed or implied, No operational assessments have been made by DPA Auctions on this item, it has been photographed ONLY.



#225 - 1000 Gallon Oil Tank (TH362)

1000 Gallon Oil Tank (TH362), grey, 1000 gallon capacity. Notes: Item Location: Osseo, WI 54758 Equipment Sold "AS IS, WHERE IS": All equipment/property is sold "AS IS, WHERE IS" with no warranty or guarantees, expressed or implied, No operational assessments have been made by DPA Auctions on this item, it has been photographed ONLY.



#227 - DMI 5300 (DR0481)

DMI 5300 (DR0481), 19 knife pull type tool bar, hydraulic wings, hydraulic walking tandem gauge wheels, Raven cooler, Raven controller, walking tandem axles, double disc sealers, front coulters. Notes: Complete Dispersal of Nh3 division. Item Location: Dixon, NE 68732 Equipment Sold "AS IS, WHERE IS": All equipment/property is sold "AS IS, WHERE IS" with no warranty or guarantees, expressed or implied, No operational assessments have been made by DPA Auctions on this item, it has been photographed ONLY.



#228 - Blu-Jet Landrunner Tool Bar (DR0482)

Blu-Jet Landrunner Tool Bar (DR0482), 11 knife pull type tool bar, John-blu ground drive pump, front coulters, Yetter notched double disc sealers, hydraulic wings, hydraulic gauge wheels. Notes: Complete Dispersal of Nh3 division. Item Location: Dixon, NE 68732 Equipment Sold "AS IS, WHERE IS": All equipment/property is sold "AS IS, WHERE IS" with no warranty or guarantees, expressed or implied, No operational assessments have been made by DPA Auctions on this item, it has been photographed ONLY.



#229 - Blu-Jet Landwalker Tool Bar (DR0483)

Blu-Jet Landwalker Tool Bar (DR0483), pull type tool bar, front coulters, hydraulic wings, manual gauge wheels, bar is for parts, some shanks missing. Notes: Complete Dispersal of Nh3 division. Item Location: Dixon, NE 68732 Equipment Sold "AS IS, WHERE IS": All equipment/property is sold "AS IS, WHERE IS" with no warranty or guarantees, expressed or implied, No operational assessments have been made by DPA Auctions on this item, it has been photographed ONLY.



#230 - Double Nh3 Nurse Tank (DR0484 Unit 133)

Double Nh3 Nurse Tank (DR0484 Unit 133), double 1000 gallon top front fill tanks, data tags, Duo lift gooseneck gear, rear hitch, 385/65R22.5 tires. Notes: Complete Dispersal of Nh3 division. Item Location: Dixon, NE 68732 Equipment Sold "AS IS, WHERE IS": All equipment/property is sold "AS IS, WHERE IS" with no warranty or guarantees, expressed or implied, No operational assessments have been made by DPA Auctions on this item, it has been photographed ONLY.



#231 - Nh3 Nurse Tank (DR0485 Unit 122)

Nh3 Nurse Tank (DR0485 Unit 122), 1415 gallon nurse tank, top front fill, data tag, P&H 5th wheel style running gear, rear hitch, 12.5R-15 tires. Notes: Complete Dispersal of Nh3 division. Item Location: Dixon, NE 68732 Equipment Sold "AS IS, WHERE IS": All equipment/property is sold "AS IS, WHERE IS" with no warranty or guarantees, expressed or implied, No operational assessments have been made by DPA Auctions on this item, it has been photographed ONLY.



#232 - Nh3 Nurse Tank (DR0486 Unit 1234)

Nh3 Nurse Tank (DR0486 Unit 1234), 1415 gallon nurse tank, top front fill, data tag, Clark 5th wheel style running gear, rear hitch, 12.5R-15 tires. Notes: Complete Dispersal of Nh3 division. Item Location: Dixon, NE 68732 Equipment Sold "AS IS, WHERE IS": All equipment/property is sold "AS IS, WHERE IS" with no warranty or guarantees, expressed or implied, No operational assessments have been made by DPA Auctions on this item, it has been photographed ONLY.



#233 - Nh3 Nurse Tank (DR0487 Unit 125)

Nh3 Nurse Tank (DR0487 Unit 125), 1415 gallon nurse tank, top front fill, data tag, P&H 5th wheel style running gear, rear hitch, 12.5R-15 tires. Notes: Complete Dispersal of Nh3 division. Item Location: Dixon, NE 68732 Equipment Sold "AS IS, WHERE IS": All equipment/property is sold "AS IS, WHERE IS" with no warranty or guarantees, expressed or implied, No operational assessments have been made by DPA Auctions on this item, it has been photographed ONLY.



#234 - Nh3 Nurse Tank (DR0488 Unit 144)

Nh3 Nurse Tank (DR0488 Unit 144), 1415 gallon nurse tank, top front fill, data tag, P&H 5th wheel style running gear, rear hitch, 12.5R-15 tires. Notes: Complete Dispersal of Nh3 division. Item Location: Dixon, NE 68732 Equipment Sold "AS IS, WHERE IS": All equipment/property is sold "AS IS, WHERE IS" with no warranty or guarantees, expressed or implied, No operational assessments have been made by DPA Auctions on this item, it has been photographed ONLY.



#235 - 2005 Volvo VNL Truck (NP7406)

2005 Volvo VNL Truck (NP7406), Cummins diesel engine, FR014210C transmission, heat, air conditioning, cruise, air drivers seat, power steering, tandem axle, 4 bag air ride, single frame, 12,500lb air front axle, (2) 20,000lb rear axles, air brakes, 300 gallon fuel capacity, aluminum fuel tanks, air dryer, Fontaine 5th wheel, block heater, 295/75R22.5 tires, shows 861,390 miles. Notes: Truck has codes in the dash and ABS light is on, contact seller for more details. Item Location: Rich Hill, MO 64779 Equipment Sold "AS IS, WHERE IS": All equipment/property is sold "AS IS, WHERE IS" with no warranty or guarantees, expressed or implied, No operational assessments have been made by DPA Auctions on this item, it has been photographed ONLY.



#236 - 2002 CEI Pacer Bulk Bag Feed Body (NP7407)

2002 CEI Pacer Bulk Bag Feed Body (NP7407), Model A65, date of manufacturing 01-02, 26' discharge, direct drive motors, roll over tarp, 5 bin with aluminum dividers, aluminum Vs. Notes: Item Location: Rich Hill, MO 64779 Equipment Sold "AS IS, WHERE IS": All equipment/property is sold "AS IS, WHERE IS" with no warranty or guarantees, expressed or implied, No operational assessments have been made by DPA Auctions on this item, it has been photographed ONLY.



#237 - John Deere 2510 Tractor (ED702)

John Deere 2510 Tractor (ED702), tractor has dual hydraulics, diff lock, 4 rear wheel weights, quick hitch, front weights, 15-5-38 rear tires original at 50%, John Deere wide front with new 650/16 front tires, 3146 actual hours. Notes: Item Location: Leland, IL 60531 Equipment Sold "AS IS, WHERE IS": All equipment/property is sold "AS IS, WHERE IS" with no warranty or guarantees, expressed or implied, No operational assessments have been made by DPA Auctions on this item, it has been photographed ONLY.



#238 - 1997 S & H Stock Trailer (KMK665)

1997 S & H Stock Trailer (KMK665), 20' x 7', gooseneck stock trailer, tandem axle, two (2) 7,000 lb. axles, electric brakes on one axle, double gates on the rear, single center gate/divider, rubber floor mats, 235/ 85 R 16 tires. Notes: Two (2) new 7,000 lb. axles. Some rust. Item Location: Hyannis, NE 69350 Equipment Sold "AS IS, WHERE IS": All equipment/property is sold "AS IS, WHERE IS" with no warranty or guarantees, expressed or implied, No operational assessments have been made by DPA Auctions on this item, it has been photographed ONLY.



#239 - Snorkel Scissor Lift (KMK667)

Snorkel Scissor Lift (KMK667), model SL-20, Wildcat, 20 ft. height, 800 lbs. capacity, unit # 33. Notes: Unit is being sold as a non-runner. Item Location: Sioux City, IA 51105 Equipment Sold "AS IS, WHERE IS": All equipment/property is sold "AS IS, WHERE IS" with no warranty or guarantees, expressed or implied, No operational assessments have been made by DPA Auctions on this item, it has been photographed ONLY.



#240 - Snorkel Scissor Lift (KMK668)

Snorkel Scissor Lift (KMK668), model SL-25, Wildcat, 25 ft. height, 850 lbs. capacity, unit # 14. Notes: Unit is being sold as a non-runner. Item Location: Sioux City, IA 51105 Equipment Sold "AS IS, WHERE IS": All equipment/property is sold "AS IS, WHERE IS" with no warranty or guarantees, expressed or implied, No operational assessments have been made by DPA Auctions on this item, it has been photographed ONLY.



#241 - Snorkel Scissor Lift (KMK669)

Snorkel Scissor Lift (KMK669), model SL-25, Wildcat, 25 ft. height, 850 lbs. capacity, unit # 31, no data plate. Notes: Unit is being sold as a non-runner. Item Location: Sioux City, IA 51105 Equipment Sold "AS IS, WHERE IS": All equipment/property is sold "AS IS, WHERE IS" with no warranty or guarantees, expressed or implied, No operational assessments have been made by DPA Auctions on this item, it has been photographed ONLY.



#242 - Plaster Mixer (KMK670)

Plaster Mixer (KMK670), portable plaster mixer, Wisconsin air cooled engine. Notes: Unit is being sold as a non-runner. Item Location: Sioux City, IA 51105 Equipment Sold "AS IS, WHERE IS": All equipment/property is sold "AS IS, WHERE IS" with no warranty or guarantees, expressed or implied, No operational assessments have been made by DPA Auctions on this item, it has been photographed ONLY.



#243 - 2 NEW Primex Log Monster Skidder Tires (MH314)

2 NEW Primex Log Monster Skidder Tires (MH314), 23.1 X 26 Log Monster 345LS-2, 16 ply steel reinforced skidder tires, never used. Notes: Brand new, never used. Item Location: Burr Oak, KS 66936 Equipment Sold "AS IS, WHERE IS": All equipment/property is sold "AS IS, WHERE IS" with no warranty or guarantees, expressed or implied, No operational assessments have been made by DPA Auctions on this item, it has been photographed ONLY.



#244 - 8.3 Cummins Motor (MH319)

8.3 Cummins Motor (MH319), 8.3 Cummins, 234 h.p., used very little, runs great. Notes: Item Location: Burr Oak, KS 66936 Equipment Sold "AS IS, WHERE IS": All equipment/property is sold "AS IS, WHERE IS" with no warranty or guarantees, expressed or implied, No operational assessments have been made by DPA Auctions on this item, it has been photographed ONLY.



#246 - Nh3 Nurse Tank (DR0489 Unit 124)

Nh3 Nurse Tank (DR0489 Unit 124), 1415 gallon nurse tank, top front fill, data tag, P&H 5th wheel style running gear, rear hitch, 12.5R-15 tires. Notes: Complete Dispersal of Nh3 division. Item Location: Dixon, NE 68732 Equipment Sold "AS IS, WHERE IS": All equipment/property is sold "AS IS, WHERE IS" with no warranty or guarantees, expressed or implied, No operational assessments have been made by DPA Auctions on this item, it has been photographed ONLY.



#247 - Nh3 Nurse Tank (DR0490 Unit 135)

Nh3 Nurse Tank (DR0490 Unit 135), 1415 gallon nurse tank, top front fill, data tag, P&H 5th wheel style running gear, rear hitch, 12.5R-15 tires. Notes: Complete Dispersal of Nh3 division. Item Location: Dixon, NE 68732 Equipment Sold "AS IS, WHERE IS": All equipment/property is sold "AS IS, WHERE IS" with no warranty or guarantees, expressed or implied, No operational assessments have been made by DPA Auctions on this item, it has been photographed ONLY.



#248 - Nh3 Nurse Tank (DR0491 Unit 120)

Nh3 Nurse Tank (DR0491 Unit 120), 1415 gallon nurse tank, top front fill, data tag, P&H 5th wheel style running gear, rear hitch, 14L-16.1 tires. Notes: Complete Dispersal of Nh3 division. Item Location: Dixon, NE 68732 Equipment Sold "AS IS, WHERE IS": All equipment/property is sold "AS IS, WHERE IS" with no warranty or guarantees, expressed or implied, No operational assessments have been made by DPA Auctions on this item, it has been photographed ONLY.



#249 - Nh3 Nurse Tank (DR0492 Unit 123)

Nh3 Nurse Tank (DR0491 Unit 120), 1415 gallon nurse tank, top front fill, data tag, P&H 5th wheel style running gear, rear hitch, 14L-16.1 tires. Notes: Complete Dispersal of Nh3 division. Item Location: Dixon, NE 68732 Equipment Sold "AS IS, WHERE IS": All equipment/property is sold "AS IS, WHERE IS" with no warranty or guarantees, expressed or implied, No operational assessments have been made by DPA Auctions on this item, it has been photographed ONLY.



#250 - Nh3 Nurse Tank (DR0493 Unit 121)

Nh3 Nurse Tank (DR0493 Unit 121), 1415 gallon nurse tank, top front fill, data tag, 5th wheel style running gear, rear hitch, 12.5R-15 tires. Notes: Complete Dispersal of Nh3 division. Item Location: Dixon, NE 68732 Equipment Sold "AS IS, WHERE IS": All equipment/property is sold "AS IS, WHERE IS" with no warranty or guarantees, expressed or implied, No operational assessments have been made by DPA Auctions on this item, it has been photographed ONLY.



#251 - Nh3 Nurse Tank (DR0494 Unit 138)

Nh3 Nurse Tank (DR0494 Unit 138), 1415 gallon nurse tank, top front fill, data tag, P&H 5th wheel style running gear, rear hitch, 12.5R-15 tires. Notes: Complete Dispersal of Nh3 division. Item Location: Dixon, NE 68732 Equipment Sold "AS IS, WHERE IS": All equipment/property is sold "AS IS, WHERE IS" with no warranty or guarantees, expressed or implied, No operational assessments have been made by DPA Auctions on this item, it has been photographed ONLY.



#252 - 1969 Master 18,000 (DR0475)

1969 Master 18,000 (DR0475), 18,000 gallon Nh3 storage tank on skids, self contained pump & compressor, load out stations, data tag. Notes: Complete Dispersal of Nh3 division. Item Location: Dixon, NE 68732 Equipment Sold "AS IS, WHERE IS": All equipment/property is sold "AS IS, WHERE IS" with no warranty or guarantees, expressed or implied, No operational assessments have been made by DPA Auctions on this item, it has been photographed ONLY.



#253 - ECII Manifold (DR0495)

ECII Manifold (DR0495), NEW NEVER USED, model A8564G multiport manifold, can be used LP or Nh3. Notes: Item Location: Augusta, IL 62311 Equipment Sold "AS IS, WHERE IS": All equipment/property is sold "AS IS, WHERE IS" with no warranty or guarantees, expressed or implied, No operational assessments have been made by DPA Auctions on this item, it has been photographed ONLY.



#254 - Simonsen Dry Spreader (DR0447 Unit 97605)

Simonsen Dry Spreader (DR0447 Unit 97605), 6 ton stainless steel dry buggy, ground drive web chain, PTO drive rear spinner, set up for 540 or 1000 PTO, roll tarp, tandem axle gear, 16.5L-16.1 tires. Notes: Buggy has been gone thru, field ready. Item Location: Emery, SD 57332 Equipment Sold "AS IS, WHERE IS": All equipment/property is sold "AS IS, WHERE IS" with no warranty or guarantees, expressed or implied, No operational assessments have been made by DPA Auctions on this item, it has been photographed ONLY.



#255 - Simonsen Dry Spreader (DR0446 Unit 97609)

Simonsen Dry Spreader (DR0446 Unit 97609), 6 ton stainless steel dry buggy, ground drive web chain, PTO drive rear spinner, set up for 540 or 1000 PTO, roll tarp, tandem axle gear, 16.5L-16.1 tires. Notes: Buggy has been gone thru, field ready. Item Location: Emery, SD 57332 Equipment Sold "AS IS, WHERE IS": All equipment/property is sold "AS IS, WHERE IS" with no warranty or guarantees, expressed or implied, No operational assessments have been made by DPA Auctions on this item, it has been photographed ONLY.



#256 - Simonsen Dry Spreader (DR0445 Unit 97604)

Simonsen Dry Spreader (DR0445 Unit 97604), 6 ton stainless steel dry buggy, ground drive web chain, PTO drive rear spinner, set up for 540 or 1000 PTO, roll tarp, tandem axle gear, 16.5L-16.1 tires. Notes: Buggy has been gone thru, field ready. Item Location: Emery, SD 57332 Equipment Sold "AS IS, WHERE IS": All equipment/property is sold "AS IS, WHERE IS" with no warranty or guarantees, expressed or implied, No operational assessments have been made by DPA Auctions on this item, it has been photographed ONLY.



#257 - Simonsen Dry Spreader (DR0444 Unit 97610)

Simonsen Dry Spreader (DR0444 Unit 97610), 6 ton stainless steel dry buggy, ground drive web chain, PTO drive rear spinner, set up for 540 or 1000 PTO, roll tarp, tandem axle gear, 16.5L-16.1 tires. Notes: Buggy has been gone thru, field ready. Item Location: Emery, SD 57332 Equipment Sold "AS IS, WHERE IS": All equipment/property is sold "AS IS, WHERE IS" with no warranty or guarantees, expressed or implied, No operational assessments have been made by DPA Auctions on this item, it has been photographed ONLY.



#258 - Willmar Narrow Track (DR0443 Unit 97603)

Willmar Narrow Track (DR0443 Unit 97603), 6 ton stainless steel dry buggy, ground drive web chain, dual PTO drive rear spinners, set up for 540 or 1000 PTO, roll tarp, tandem axle gear, 16.5L-16.1 tires. Notes: Buggy has been gone thru, field ready. Item Location: Emery, SD 57332 Equipment Sold "AS IS, WHERE IS": All equipment/property is sold "AS IS, WHERE IS" with no warranty or guarantees, expressed or implied, No operational assessments have been made by DPA Auctions on this item, it has been photographed ONLY.



#259 - Meridan Tank (DR0448)

Meridan Tank (DR0448), vertical tank 975 bushel or 1220 cubic ft. capacity, top manway, caged access ladder, bottom unload auger NO MOTOR, approximately 30' tall 10' diameter. Notes: Item Location: Emery, SD 57332 Equipment Sold "AS IS, WHERE IS": All equipment/property is sold "AS IS, WHERE IS" with no warranty or guarantees, expressed or implied, No operational assessments have been made by DPA Auctions on this item, it has been photographed ONLY.



#260 - Simonsen Tender Box (DR0439)

Simonsen Tender Box (DR0439), 2008 model 4816, hydraulic stainless steel dry fertilizer box, 19' rear auger, roll tarp. Notes: Rear auger was damaged couple years ago. Has been repaired and used since. Item Location: Thurston, NE 68062 Equipment Sold "AS IS, WHERE IS": All equipment/property is sold "AS IS, WHERE IS" with no warranty or guarantees, expressed or implied, No operational assessments have been made by DPA Auctions on this item, it has been photographed ONLY.



#261 - Greenwood 200,000 BTU Gasification Wood Boiler (ED700)

Greenwood 200,000 BTU Gasification Wood Boiler (ED700), never been used, meets EPA requirements for wood burning boilers, designed as an indoor/outdoor boiler, must be installed in a shelter if installed outside, can heat from 4,000 to 10,000 square feet, boiler has cement lined refractory fire box that holds heat up to 24 hours, pressurized boiler, weight is approximately 3,000 pounds, designed to burn dry wood and chunks, no splitting required, smoke free and very little ash. Notes: Item Location: Random Lake, WI 53075 Equipment Sold "AS IS, WHERE IS": All equipment/property is sold "AS IS, WHERE IS" with no warranty or guarantees, expressed or implied, No operational assessments have been made by DPA Auctions on this item, it has been photographed ONLY.



#262 - 2009 Wacker Neuson LTN6 Light Tower (ED701)

2009 Wacker Neuson LTN6 Light Tower (ED701), 6 WK generator, Kohler/Lombardini diesel motor, (4) 1000 metal halide lamps, running gear tires are like new, always stored indoors, shows 1946 hours. Notes: Item Location: Random Lake, WI 53075 Equipment Sold "AS IS, WHERE IS": All equipment/property is sold "AS IS, WHERE IS" with no warranty or guarantees, expressed or implied, No operational assessments have been made by DPA Auctions on this item, it has been photographed ONLY.



#263 - L555 Deluxe New Holland Skid Loader (ED703)

L555 Deluxe New Holland Skid Loader (ED703), 1878 original hours, 2nd owner, includes cab heater, cab in closer door with wiper, side shields with adjustable vents and floor mats, unit has auxiliary and foam filled tires, also includes 72" low profile bucket, 72" Gannon 4 & 1 clam bucket with teeth and grouser over the tire tracks. Notes: Item Location: Random Lake, WI 53075 Equipment Sold "AS IS, WHERE IS": All equipment/property is sold "AS IS, WHERE IS" with no warranty or guarantees, expressed or implied, No operational assessments have been made by DPA Auctions on this item, it has been photographed ONLY.



#264 - 1995 Featherlite Aluminum Trailer (DL392)

1995 Featherlite Aluminum Trailer (DL392), 48ft x 102", three 7000# axles, electric brakes, good tires and brakes, will haul three cars. Notes: Item Location: Saint Germain, WI 54558 Equipment Sold "AS IS, WHERE IS": All equipment/property is sold "AS IS, WHERE IS" with no warranty or guarantees, expressed or implied, No operational assessments have been made by DPA Auctions on this item, it has been photographed ONLY.



#266 - 1985 International S 2500 Dump Truck (KMK2062)

1985 International S 2500 Dump Truck (KMK2062), 865 Cummins diesel engine, 10 speed Eaton Fuller transmission, am/FM/cassette radio, heat and air conditioning, 285/75R24.5 front tires, 295/75R22.5 rear tires, tandem axle, 14' dump box and hoist, shows 449,879 miles. Notes: The bed has a new floor. Item Location: Oblong, IL 62449 Equipment Sold "AS IS, WHERE IS": All equipment/property is sold "AS IS, WHERE IS" with no warranty or guarantees, expressed or implied, No operational assessments have been made by DPA Auctions on this item, it has been photographed ONLY.



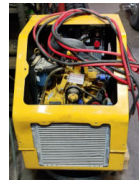
#267 - 600 Gallon Military Fuel Tank (ED704)

600 Gallon Military Fuel Tank (ED704), very nice shape all aluminum, tanks are baffled and have a manhole on top that opens and closes, bottom has a sump valve and a 2 inch quick coupler fitting to hook a hose or pump to, top also has a 2 inch threaded port to install a pump or plumbing from the top. Notes: Tank is very light, approximately 500 lbs., made from heavy duty military aluminum. Item Location: Cairo, IL 62914 Equipment Sold "AS IS, WHERE IS": All equipment/property is sold "AS IS, WHERE IS" with no warranty or guarantees, expressed or implied, No operational assessments have been made by DPA Auctions on this item, it has been photographed ONLY.



#268 - Caterpillar APU Diesel Generator (TH358)

Caterpillar APU Diesel Generator (TH358), new. Notes: Item Location: Osseo, WI 54758 Equipment Sold "AS IS, WHERE IS": All equipment/property is sold "AS IS, WHERE IS" with no warranty or guarantees, expressed or implied, No operational assessments have been made by DPA Auctions on this item, it has been photographed ONLY.



#269 - Hydraulic Wood Splitter (TH367)

Hydraulic Wood Splitter (TH367). Notes: Item Location: Osseo, WI 54758 Equipment Sold "AS IS, WHERE IS": All equipment/property is sold "AS IS, WHERE IS" with no warranty or guarantees, expressed or implied, No operational assessments have been made by DPA Auctions on this item, it has been photographed ONLY.



#270 - 2004 Tarasport Flat Bed Trailer (TH352)

2004 Tarasport Flat Bed Trailer (TH352), 52' 6" long, 96" wide plus 6' 6" of extensions in the front and rear. Notes: Item Location: Osseo, WI 54758 Equipment Sold "AS IS, WHERE IS": All equipment/property is sold "AS IS, WHERE IS" with no warranty or guarantees, expressed or implied, No operational assessments have been made by DPA Auctions on this item, it has been photographed ONLY.



#271 - 1999 Fontaine Step Deck Trailer (TH354)

1999 Fontaine Step Deck Trailer (TH354), 48' by 102" wide, comes with side kit. Notes: Item Location: Osseo, WI 54758 Equipment Sold "AS IS, WHERE IS": All equipment/property is sold "AS IS, WHERE IS" with no warranty or guarantees, expressed or implied, No operational assessments have been made by DPA Auctions on this item, it has been photographed ONLY.



#272 - 1993 Heil End Dump Trailer (TH356)

1993 Heil End Dump Trailer (TH356), 23' long, 96" wide, 3 axle, air ride suspension, 315/80R22.5 tires. Notes: Item Location: Osseo, WI 54758 Equipment Sold "AS IS, WHERE IS": All equipment/property is sold "AS IS, WHERE IS" with no warranty or guarantees, expressed or implied, No operational assessments have been made by DPA Auctions on this item, it has been photographed ONLY.



#273 - 1999 Wilson Convertible Hopper Trailer (TH351)

1999 Wilson Convertible Hopper Trailer (TH351), 46' long, 84" high, 102" wide, air ride suspension. Notes: Item Location: Osseo, WI 54758 Equipment Sold "AS IS, WHERE IS": All equipment/property is sold "AS IS, WHERE IS" with no warranty or guarantees, expressed or implied, No operational assessments have been made by DPA Auctions on this item, it has been photographed ONLY.



#274 - 2000 Peterbilt (TH353)

2000 Peterbilt (TH353), C-12 CAT, 13 speed, air ride suspension, double framed. Notes: Needs engine work. NON RUNNER. Item Location: Osseo, WI 54758 Equipment Sold "AS IS, WHERE IS": All equipment/property is sold "AS IS, WHERE IS" with no warranty or guarantees, expressed or implied, No operational assessments have been made by DPA Auctions on this item, it has been photographed ONLY.



#275 - 1984 Ford Service Truck (TH355)

1984 Ford Service Truck (TH355), inline 300, 5 speed transmission, 14' long all aluminum. Notes: Good condition. Air compressor NOT included, it will be removed. Item Location: Osseo, WI 54758 Equipment Sold "AS IS, WHERE IS": All equipment/property is sold "AS IS, WHERE IS" with no warranty or guarantees, expressed or implied, No operational assessments have been made by DPA Auctions on this item, it has been photographed ONLY.



#276 - 1965 Ford Pickup 3/4 Ton 302 (TH357)

1965 Ford Pickup 3/4 Ton 302 (TH357), manual transmission. Notes: Arizona truck, no rust. Item Location: Osseo, WI 54758 Equipment Sold "AS IS, WHERE IS": All equipment/property is sold "AS IS, WHERE IS" with no warranty or guarantees, expressed or implied, No operational assessments have been made by DPA Auctions on this item, it has been photographed ONLY.



#277 - 2003 Curtain Side Truck Bed (TH361)

2003 Curtain Side Truck Bed (TH361), 26' long, 102" wide, (NU VAN). Notes: Item Location: Osseo, WI 54758 Equipment Sold "AS IS, WHERE IS": All equipment/property is sold "AS IS, WHERE IS" with no warranty or guarantees, expressed or implied, No operational assessments have been made by DPA Auctions on this item, it has been photographed ONLY.



#278 - Truck Box (TH368)

Truck Box (TH368), 8' wide by 12' 6" long. Notes: Item Location: Osseo, WI 54758 Equipment Sold "AS IS, WHERE IS": All equipment/property is sold "AS IS, WHERE IS" with no warranty or guarantees, expressed or implied, No operational assessments have been made by DPA Auctions on this item, it has been photographed ONLY.



#279 - Liquid Storage Tank (PZ0542)

Liquid Storage Tank (PZ0542), approx. 10,000 gallon vertical steel liquid storage tank, valve. Notes: This tank must be removed by February 28, 2019 with NO exceptions. Dismantle, removal and transportation is at the expense, risk and liability of the buyer. Item Location: Macomb, IL 61455 Equipment Sold "AS IS, WHERE IS": All equipment/property is sold "AS IS, WHERE IS" with no warranty or guarantees, expressed or implied, No operational assessments have been made by DPA Auctions on this item, it has been photographed ONLY.



#280 - Liquid Storage Tank (PZ0543)

Liquid Storage Tank (PZ0543), approx. 10,000 gallon vertical steel liquid storage tank, valve. Notes: This tank must be removed by February 28, 2019 with NO exceptions. Dismantle, removal and transportation is at the expense, risk and liability of the buyer. Item Location: Macomb, IL 61455 Equipment Sold "AS IS, WHERE IS": All equipment/property is sold "AS IS, WHERE IS" with no warranty or guarantees, expressed or implied, No operational assessments have been made by DPA Auctions on this item, it has been photographed ONLY.



#281 - Liquid Storage Tank (PZ0545)

Liquid Storage Tank (PZ0545), 1100 gallon vertical stainless steel liquid tank, stainless steel stands. Notes: This tank must be removed by February 28, 2019 with NO exceptions. Dismantle, removal and transportation is at the expense, risk and liability of the buyer. Item Location: Macomb, IL 61455 Equipment Sold "AS IS, WHERE IS": All equipment/property is sold "AS IS, WHERE IS" with no warranty or guarantees, expressed or implied, No operational assessments have been made by DPA Auctions on this item, it has been photographed ONLY.



#282 - Liquid Storage Tank (PZ05457)

Liquid Storage Tank (PZ05457), 1100 gallon vertical stainless steel liquid tank, stainless steel stands. Notes: This tank must be removed by February 28, 2019 with NO exceptions. Dismantle, removal and transportation is at the expense, risk and liability of the buyer. Item Location: Macomb, IL 61455 Equipment Sold "AS IS, WHERE IS": All equipment/property is sold "AS IS, WHERE IS" with no warranty or guarantees, expressed or implied, No operational assessments have been made by DPA Auctions on this item, it has been photographed ONLY.



#283 - 1963 Eaton Aluminum Liquid Storage Tank (PZ0608)

1963 Eaton Aluminum Liquid Storage Tank (PZ0608), 1963 Eaton 22,000 gallon aluminum horizontal liquid storage tank, steel saddles. Notes: This tank must be removed by February 28, 2019 with NO exceptions. Dismantle, removal and transportation is at the expense, risk and liability of the buyer. Please contact seller about removal from building. Item Location: Macomb, IL 61455 Equipment Sold "AS IS, WHERE IS": All equipment/property is sold "AS IS, WHERE IS" with no warranty or guarantees, expressed or implied, No operational assessments have been made by DPA Auctions on this item, it has been photographed ONLY.



#284 - Pump/Motor (PZ0546)

Pump/Motor (PZ0546), Total Control Systems meter, Scot pump, Baldor electric motor, stand. Notes: Item Location: Macomb, IL 61455 Equipment Sold "AS IS, WHERE IS": All equipment/property is sold "AS IS, WHERE IS" with no warranty or guarantees, expressed or implied, No operational assessments have been made by DPA Auctions on this item, it has been photographed ONLY.



#285 - Pump/Motor (PZ0548)

Pump/Motor (PZ0548), Total Control Systems meter, Scot pump, Baldor 5 hp electric motor, stand. Notes: Item Location: Macomb, IL 61455 Equipment Sold "AS IS, WHERE IS": All equipment/property is sold "AS IS, WHERE IS" with no warranty or guarantees, expressed or implied, No operational assessments have been made by DPA Auctions on this item, it has been photographed ONLY.



#286 - Pump/Motor (PZ0549)

Pump/Motor (PZ0549), Marathon 5 hp electric motor, pump, 15 gallon poly chemical inductor. Notes: Item Location: Macomb, IL 61455 Equipment Sold "AS IS, WHERE IS": All equipment/property is sold "AS IS, WHERE IS" with no warranty or guarantees, expressed or implied, No operational assessments have been made by DPA Auctions on this item, it has been photographed ONLY.



#287 - Pump/Motor (PZ0552)

Pump/Motor (PZ0552), FPP meter, Scot pump, Baldor 5 hp electric motor, stand. Notes: Item Location: Adair, IL 61411 Equipment Sold "AS IS, WHERE IS": All equipment/property is sold "AS IS, WHERE IS" with no warranty or guarantees, expressed or implied, No operational assessments have been made by DPA Auctions on this item, it has been photographed ONLY.



#288 - Pump/Motor (PZ0553)

Pump/Motor (PZ0553), Total Control Systems meter, Scot pump, Baldor 5 hp electric motor, stand. Notes: Item Location: Adair, IL 61411 Equipment Sold "AS IS, WHERE IS": All equipment/property is sold "AS IS, WHERE IS" with no warranty or guarantees, expressed or implied, No operational assessments have been made by DPA Auctions on this item, it has been photographed ONLY.



#289 - Liquid Storage Tank (PZ0550)

Liquid Storage Tank (PZ0550), approx. 10,000 gallon vertical steel liquid storage tank, valve. Notes: This tank must be removed by February 28, 2019 with NO exceptions. Dismantle, removal and transportation is at the expense, risk and liability of the buyer. Item Location: Adair, IL 61411 Equipment Sold "AS IS, WHERE IS": All equipment/property is sold "AS IS, WHERE IS" with no warranty or guarantees, expressed or implied, No operational assessments have been made by DPA Auctions on this item, it has been photographed ONLY.



#290 - Liquid Storage Tank (PZ0551)

Liquid Storage Tank (PZ0551), approx. 10,000 gallon vertical steel liquid storage tank, valve. Notes: This tank must be removed by February 28, 2019 with NO exceptions. Dismantle, removal and transportation is at the expense, risk and liability of the buyer. Item Location: Adair, IL 61411 Equipment Sold "AS IS, WHERE IS": All equipment/property is sold "AS IS, WHERE IS" with no warranty or guarantees, expressed or implied, No operational assessments have been made by DPA Auctions on this item, it has been photographed ONLY.



#291 - Friesen Liquid Storage Tank (PZ0561)

Friesen Liquid Storage Tank (PZ0561) Friesen approx. 1500 gallon stainless steel vertical liquid tank, dish bottom, stainless steel stands. Notes: This tank must be removed by February 28, 2019 with NO exceptions. Dismantle, removal and transportation is at the expense, risk and liability of the buyer. Item Location: Adair, IL 61411 Equipment Sold "AS IS, WHERE IS": All equipment/property is sold "AS IS, WHERE IS" with no warranty or guarantees, expressed or implied, No operational assessments have been made by DPA Auctions on this item, it has been photographed ONLY.



#292 - Precision Liquid Storage Tank (PZ0562)

Precision Liquid Storage Tank (PZ0562), Precision approx. 1100 gallon stainless steel vertical liquid tank, dish bottom, stainless steel stands. Notes: This tank must be removed by February 28, 2019 with NO exceptions. Dismantle, removal and transportation is at the expense, risk and liability of the buyer. Item Location: Adair, IL 61411 Equipment Sold "AS IS, WHERE IS": All equipment/property is sold "AS IS, WHERE IS" with no warranty or guarantees, expressed or implied, No operational assessments have been made by DPA Auctions on this item, it has been photographed ONLY.



#293 - Liquid Storage Tank (PZ0563)

Liquid Storage Tank (PZ0563), approx. 1100 gallon stainless steel vertical liquid tank, dish bottom. Notes: This tank must be removed by February 28, 2019 with NO exceptions. Dismantle, removal and transportation is at the expense, risk and liability of the buyer. Item Location: Adair, IL 61411 Equipment Sold "AS IS, WHERE IS": All equipment/property is sold "AS IS, WHERE IS" with no warranty or guarantees, expressed or implied, No operational assessments have been made by DPA Auctions on this item, it has been photographed ONLY.



#294 - Friesen Liquid Storage Tank (PZ0564)

Friesen Liquid Storage Tank (PZ0564) Friesen approx. 1500 gallon stainless steel vertical liquid tank, dish bottom, stainless steel stands. Notes: This tank must be removed by February 28, 2019 with NO exceptions. Dismantle, removal and transportation is at the expense, risk and liability of the buyer. Item Location: Adair, IL 61411 Equipment Sold "AS IS, WHERE IS": All equipment/property is sold "AS IS, WHERE IS" with no warranty or guarantees, expressed or implied, No operational assessments have been made by DPA Auctions on this item, it has been photographed ONLY.



#295 - 1955 Butler aluminum Liquid Storage Tank (PZ0565)

1955 Butler aluminum Liquid Storage Tank (PZ0565), 1955 Butler 22,000 gallon aluminum horizontal liquid storage tank, concrete saddles, national board #871. Notes: This tank must be removed by February 28, 2019 with NO exceptions. Dismantle, removal and transportation is at the expense, risk and liability of the buyer. Please contact seller about removal from building. Item Location: Adair, IL 61411 Equipment Sold "AS IS, WHERE IS": All equipment/property is sold "AS IS, WHERE IS" with no warranty or guarantees, expressed or implied, No operational assessments have been made by DPA Auctions on this item, it has been photographed ONLY.



#296 - 1955 Butler aluminum Liquid Storage Tank (PZ0566)

1955 Butler aluminum Liquid Storage Tank (PZ0566), 1955 Butler 22,000 gallon aluminum horizontal liquid storage tank, steel saddles, national board #804. Notes: This tank must be removed by February 28, 2019 with NO exceptions. Dismantle, removal and transportation is at the expense, risk and liability of the buyer. Please contact seller about removal from building. Item Location: Adair, IL 61411 Equipment Sold "AS IS, WHERE IS": All equipment/property is sold "AS IS, WHERE IS" with no warranty or guarantees, expressed or implied, No operational assessments have been made by DPA Auctions on this item, it has been photographed ONLY.



#297 - Aluminum Liquid Storage Tank (PZ0573)

Aluminum Liquid Storage Tank (PZ0573), 22,000 gallon aluminum horizontal liquid storage tank. Notes: This tank must be removed by February 28, 2019 with NO exceptions. Dismantle, removal and transportation is at the expense, risk and liability of the buyer. Item Location: Lewistown, IL 61542 Equipment Sold "AS IS, WHERE IS": All equipment/property is sold "AS IS, WHERE IS" with no warranty or guarantees, expressed or implied, No operational assessments have been made by DPA Auctions on this item, it has been photographed ONLY.



#298 - Case 321E Loader (PZ0572)

Case 321E Loader (PZ0572), diesel engine, shuttle shift transmission, air conditioning, heat, Am/Fm CD stereo, cab, lights, 80" bucket, Birkey's forks, 405/70R20 tires, shows 2693 hours. Notes: Item Location: Lewistown, IL 61542 Equipment Sold "AS IS, WHERE IS": All equipment/property is sold "AS IS, WHERE IS" with no warranty or guarantees, expressed or implied, No operational assessments have been made by DPA Auctions on this item, it has been photographed ONLY.



#299 - Pump/Motor (PZ0554)

Pump/Motor (PZ0554), Liquid Controls meter, pump, Baldor 3 hp electric motor, stand. Notes: Item Location: Adair, IL 61411 Equipment Sold "AS IS, WHERE IS": All equipment/property is sold "AS IS, WHERE IS" with no warranty or guarantees, expressed or implied, No operational assessments have been made by DPA Auctions on this item, it has been photographed ONLY.



#300 - Electric Motor (PZ0556)

Electric Motor (PZ0556), Electric motor, stainless steel chemical inductor. Notes: Item Location: Adair, IL 61411 Equipment Sold "AS IS, WHERE IS": All equipment/property is sold "AS IS, WHERE IS" with no warranty or guarantees, expressed or implied, No operational assessments have been made by DPA Auctions on this item, it has been photographed ONLY.



#301 - Electric Motor (PZ0555)

Electric Motor (PZ0555), electric motor, Scot pump, poly chemical inductor. Notes: Item Location: Adair, IL 61411 Equipment Sold "AS IS, WHERE IS": All equipment/property is sold "AS IS, WHERE IS" with no warranty or guarantees, expressed or implied, No operational assessments have been made by DPA Auctions on this item, it has been photographed ONLY.



#302 - Electric Motor/Pump (PZ0557)

Electric Motor/Pump (PZ0557), Marathon 3 hp electric motor, pump, cord. Notes: Item Location: Adair, IL 61411 Equipment Sold "AS IS, WHERE IS": All equipment/property is sold "AS IS, WHERE IS" with no warranty or guarantees, expressed or implied, No operational assessments have been made by DPA Auctions on this item, it has been photographed ONLY.



#303 - Electric Motor/Pump (PZ0558)

Electric Motor/Pump (PZ0558), Baldor 10 hp electric motor, pump, cord. Notes: Item Location: Adair, IL 61411 Equipment Sold "AS IS, WHERE IS": All equipment/property is sold "AS IS, WHERE IS" with no warranty or guarantees, expressed or implied, No operational assessments have been made by DPA Auctions on this item, it has been photographed ONLY.



#304 - Pump/Motor (PZ0559)

Pump/Motor (PZ0559), Total Controls Systems meter, Scot pump, Baldor 5 hp electric motor, stand. Notes: Item Location: Adair, IL 61411 Equipment Sold "AS IS, WHERE IS": All equipment/property is sold "AS IS, WHERE IS" with no warranty or guarantees, expressed or implied, No operational assessments have been made by DPA Auctions on this item, it has been photographed ONLY.



#305 - Pump/Motor (PZ0567)

Pump/Motor (PZ0567), Weg 3 hp electric motor, Scot pump. Notes: Item Location: Adair, IL 61411 Equipment Sold "AS IS, WHERE IS": All equipment/property is sold "AS IS, WHERE IS" with no warranty or guarantees, expressed or implied, No operational assessments have been made by DPA Auctions on this item, it has been photographed ONLY.



#306 - Pump/Motor (PZ0574)

Pump/Motor (PZ0574), Baldor 10 hp electric motor, pump. Notes: Item Location: Lewistown, IL 61542 Equipment Sold "AS IS, WHERE IS": All equipment/property is sold "AS IS, WHERE IS" with no warranty or guarantees, expressed or implied, No operational assessments have been made by DPA Auctions on this item, it has been photographed ONLY.



#307 - Pump/Motor (PZ0575)

Pump/Motor (PZ0575), Baldor 5 hp electric motor, Scot pump. Notes: Item Location: Lewistown, IL 61542 Equipment Sold "AS IS, WHERE IS": All equipment/property is sold "AS IS, WHERE IS" with no warranty or guarantees, expressed or implied, No operational assessments have been made by DPA Auctions on this item, it has been photographed ONLY.



#308 - Hannay Hose Reel (PZ0592)

Hannay Hose Reel (PZ0592), Hannay electric hose reel, model SBPB 16-23-24 RT & SBEPB 28-23-24 RT. Notes: Never been used. Item Location: Waterloo, IA 50703 Equipment Sold "AS IS, WHERE IS": All equipment/property is sold "AS IS, WHERE IS" with no warranty or guarantees, expressed or implied, No operational assessments have been made by DPA Auctions on this item, it has been photographed ONLY.



#309 - Hannay Hose Reel (PZ0593)

Hannay Hose Reel (PZ0593), Hannay electric hose reel, model SBPB 16-23-24 RT & SBEPB 28-23-24 RT. Notes: Never been used. Item Location: Waterloo, IA 50703 Equipment Sold "AS IS, WHERE IS": All equipment/property is sold "AS IS, WHERE IS" with no warranty or guarantees, expressed or implied, No operational assessments have been made by DPA Auctions on this item, it has been photographed ONLY.



#310 - Hannay Hose Reel (PZ0594)

Hannay Hose Reel (PZ0594), Hannay electric hose reel, model SBPB 16-23-24 RT & SBEPB 28-23-24 RT. Notes: Never been used. Item Location: Waterloo, IA 50703 Equipment Sold "AS IS, WHERE IS": All equipment/property is sold "AS IS, WHERE IS" with no warranty or guarantees, expressed or implied, No operational assessments have been made by DPA Auctions on this item, it has been photographed ONLY.



#311 - Hannay Hose Reel (PZ0595)

Hannay Hose Reel (PZ0595), Hannay electric hose reel. Notes: Never been used. Item Location: Waterloo, IA 50703 Equipment Sold "AS IS, WHERE IS": All equipment/property is sold "AS IS, WHERE IS" with no warranty or guarantees, expressed or implied, No operational assessments have been made by DPA Auctions on this item, it has been photographed ONLY.



#312 - Hannay Hose Reel (PZ0596)

Hannay Hose Reel (PZ0596), Hannay electric hose reel. Notes: Never been used. Item Location: Waterloo, IA 50703 Equipment Sold "AS IS, WHERE IS": All equipment/property is sold "AS IS, WHERE IS" with no warranty or guarantees, expressed or implied, No operational assessments have been made by DPA Auctions on this item, it has been photographed ONLY.



#313 - Hannay Hose Reel (PZ0597)

Hannay Hose Reel (PZ0597), Hannay model PB 28-23-24 RT hose reel. Notes: Never been used. Item Location: Waterloo, IA 50703 Equipment Sold "AS IS, WHERE IS": All equipment/property is sold "AS IS, WHERE IS" with no warranty or guarantees, expressed or implied, No operational assessments have been made by DPA Auctions on this item, it has been photographed ONLY.



#314 - Hannay Hose Reel (PZ0598)

Hannay Hose Reel (PZ0598), Hannay model EPJ 32-23-24 LB electric hose reel. Notes: Never been used. Item Location: Waterloo, IA 50703 Equipment Sold "AS IS, WHERE IS": All equipment/property is sold "AS IS, WHERE IS" with no warranty or guarantees, expressed or implied, No operational assessments have been made by DPA Auctions on this item, it has been photographed ONLY.



#315 - Hannay Hose Reel (PZ0601)

Hannay Hose Reel (PZ0601), Hannay model EPJ 22-30-31 RB electric hose reel. Notes: Never been used. Item Location: Waterloo, IA 50703 Equipment Sold "AS IS, WHERE IS": All equipment/property is sold "AS IS, WHERE IS" with no warranty or guarantees, expressed or implied, No operational assessments have been made by DPA Auctions on this item, it has been photographed ONLY.



#316 - Hannay Hose Reel (PZ0602)

Hannay Hose Reel (PZ0602), Hannay model EPJ 22-30-31 RB electric hose reel. Notes: Never been used. Item Location: Waterloo, IA 50703 Equipment Sold "AS IS, WHERE IS": All equipment/property is sold "AS IS, WHERE IS" with no warranty or guarantees, expressed or implied, No operational assessments have been made by DPA Auctions on this item, it has been photographed ONLY.



#317 - Hannay Hose Reel (PZ0603)

Hannay Hose Reel (PZ0603), Hannay model EPJ 22-30-31 RB electric hose reel. Notes: Never been used. Item Location: Waterloo, IA 50703 Equipment Sold "AS IS, WHERE IS": All equipment/property is sold "AS IS, WHERE IS" with no warranty or guarantees, expressed or implied, No operational assessments have been made by DPA Auctions on this item, it has been photographed ONLY.



#318 - Hannay Hose Reel (PZ0604)

Hannay Hose Reel (PZ0604), Hannay model EPJ 22-33-34 LB electric hose reel. Notes: Never been used. Item Location: Waterloo, IA 50703 Equipment Sold "AS IS, WHERE IS": All equipment/property is sold "AS IS, WHERE IS" with no warranty or guarantees, expressed or implied, No operational assessments have been made by DPA Auctions on this item, it has been photographed ONLY.



#319 - 18' Steel Grain Box, (CP562)

18' Steel Grain Box, (CP562), Rollover Tarp, Grain Door. Notes: Item Location: Humphrey, NE 68642 Equipment Sold "AS IS, WHERE IS": All equipment/property is sold "AS IS, WHERE IS" with no warranty or guarantees, expressed or implied, No operational assessments have been made by DPA Auctions on this item, it has been photographed ONLY.



#320 - 1982 Ranco Tilt Top Trailer, (CP563)

1982 Ranco Tilt Top Trailer, (CP563), Tandem Axle, Pinal Hitch, 18' Wood Deck. Notes: Item Location: Humphrey, NE 68642 Equipment Sold "AS IS, WHERE IS": All equipment/property is sold "AS IS, WHERE IS" with no warranty or guarantees, expressed or implied, No operational assessments have been made by DPA Auctions on this item, it has been photographed ONLY.



#321 - Mortar Mixer, (CP 565)

Mortar Mixer, (CP 565), Gas Engine. Notes: Item Location: Humphrey, NE 68642 Equipment Sold "AS IS, WHERE IS": All equipment/property is sold "AS IS, WHERE IS" with no warranty or guarantees, expressed or implied, No operational assessments have been made by DPA Auctions on this item, it has been photographed ONLY.



#322 - Pace 180 Tool Carrier (CP564)

Pace 180 Tool Carrier (CP564), Detroit Diesel Engine, Shuttle Shift Transmission, Canopy, Grapple, Articulated Steering, Single Stick Controls, 45 Degrees Swing Arms, Shows 988 Hours. Notes: Item Location: Humphrey, NE 68642 Equipment Sold "AS IS, WHERE IS": All equipment/property is sold "AS IS, WHERE IS" with no warranty or guarantees, expressed or implied, No operational assessments have been made by DPA Auctions on this item, it has been photographed ONLY.



#323 - 1996 Enclosed Trailer (CP545)

1996 Enclosed Trailer (CP545), 2-Curb Doors, Storage Room, Tandem Axle, Bumper Hitch. Notes: Item Location: Lindsay, NE 68644 Equipment Sold "AS IS, WHERE IS": All equipment/property is sold "AS IS, WHERE IS" with no warranty or guarantees, expressed or implied, No operational assessments have been made by DPA Auctions on this item, it has been photographed ONLY.



#324 - Tag-a-Long Trailer (CP549)

Tag-a-Long Trailer (CP549), 9' Steel Deck, Ramps, Single Axle, Winch, Ag Hitch, (No Title). Notes: NO TITLE. Item Location: Lindsay, NE 68644 Equipment Sold "AS IS, WHERE IS": All equipment/property is sold "AS IS, WHERE IS" with no warranty or guarantees, expressed or implied, No operational assessments have been made by DPA Auctions on this item, it has been photographed ONLY.



#325 - Tag-a-Long Trailer (CP550)

Tag-a-Long Trailer (CP550), 9' Steel Bed, Single Axle, Tilt Top, Bumper Hitch. Notes: NO TITLE. Item Location: Lindsay, NE 68644 Equipment Sold "AS IS, WHERE IS": All equipment/property is sold "AS IS, WHERE IS" with no warranty or guarantees, expressed or implied, No operational assessments have been made by DPA Auctions on this item, it has been photographed ONLY.



#326 - Tag-a-Long Trailer (CP551)

Tag-a-Long Trailer (CP551), 10 Wood Deck, Single Axle, Bumper Hitch, (No Title). Notes: NO TITLE. Item Location: Lindsay, NE 68644 Equipment Sold "AS IS, WHERE IS": All equipment/property is sold "AS IS, WHERE IS" with no warranty or guarantees, expressed or implied, No operational assessments have been made by DPA Auctions on this item, it has been photographed ONLY.



#327 - Utility Trailer (CP552)

Utility Trailer (CP552), 8' Webb Floor, Ramp, Bumper Hitch. Notes: NO TITLE. Item Location: Lindsay, NE 68644 Equipment Sold "AS IS, WHERE IS": All equipment/property is sold "AS IS, WHERE IS" with no warranty or guarantees, expressed or implied, No operational assessments have been made by DPA Auctions on this item, it has been photographed ONLY.



#328 - 1946 Chevrolet Straight Truck (CP544)

1946 Chevrolet Straight Truck (CP544), Gas Engine, 4 Speed Transmission, 16' Grain Box & Hoist, Single Axle, Shows 4642 Miles. Notes: Truck is NON RUNNER. Item Location: Lindsay, NE 68644 Equipment Sold "AS IS, WHERE IS": All equipment/property is sold "AS IS, WHERE IS" with no warranty or guarantees, expressed or implied, No operational assessments have been made by DPA Auctions on this item, it has been photographed ONLY.



#329 - Polaris Trail Blazer 330 (CP553)

Polaris Trail Blazer 330 (CP553), Gas Engine, Single Stick Transmission. Notes: Item Location: Lindsay, NE 68644 Equipment Sold "AS IS, WHERE IS": All equipment/property is sold "AS IS, WHERE IS" with no warranty or guarantees, expressed or implied, No operational assessments have been made by DPA Auctions on this item, it has been photographed ONLY.



#330 - BRP Outlander, (CP 554)

BRP Outlander, (CP 554), Gas Engine, Hi-Low Transmission, Visco-Lok 4x4. Notes: Item Location: Lindsay, NE 68644 Equipment Sold "AS IS, WHERE IS": All equipment/property is sold "AS IS, WHERE IS" with no warranty or guarantees, expressed or implied, No operational assessments have been made by DPA Auctions on this item, it has been photographed ONLY.



#331 - Kawasaki Bayou, (CP 555)

Kawasaki Bayou, (CP 555), Gas Engine, 5-Speed Transmission, 300 Dual-Mode-Differential. Notes: Item Location: Lindsay, NE 68644 Equipment Sold "AS IS, WHERE IS": All equipment/property is sold "AS IS, WHERE IS" with no warranty or guarantees, expressed or implied, No operational assessments have been made by DPA Auctions on this item, it has been photographed ONLY.



#332 - 2000 Ford F-150 (KMK664)

2000 Ford F-150 (KMK664), 6 cyl. gasoline engine, 2 x 4, automatic transmission, am/fm/cd radio, heat and air conditioning, power windows, power locks. Notes: Item Location: Sioux City, IA 51105 Equipment Sold "AS IS, WHERE IS": All equipment/property is sold "AS IS, WHERE IS" with no warranty or guarantees, expressed or implied, No operational assessments have been made by DPA Auctions on this item, it has been photographed ONLY.



#333 - 2012 B-B Running Gear (PZ0484, Unit 26844)

2012 B-B Running Gear (PZ0484, Unit 26844) 2011 B-B 5th wheel running gear, 14L-16.1 SL flotation tires. Notes: Item Location: Oneida, IL 61467 Equipment Sold "AS IS, WHERE IS": All equipment/property is sold "AS IS, WHERE IS" with no warranty or guarantees, expressed or implied, No operational assessments have been made by DPA Auctions on this item, it has been photographed ONLY.



#334 - 2012 B-B Running Gear (PZ0485, Unit 26842)

2012 B-B Running Gear (PZ0485, Unit 26842) 2011 B-B 5th wheel running gear, 14L-16.1 SL flotation tires. Notes: Item Location: Oneida, IL 61467 Equipment Sold "AS IS, WHERE IS": All equipment/property is sold "AS IS, WHERE IS" with no warranty or guarantees, expressed or implied, No operational assessments have been made by DPA Auctions on this item, it has been photographed ONLY.



#335 - Running Gear (PZ0486)

Running Gear (PZ0486), 5th wheel running gear, 12.5L-16 flotation tires. Notes: Item Location: Oneida, IL 61467 Equipment Sold "AS IS, WHERE IS": All equipment/property is sold "AS IS, WHERE IS" with no warranty or guarantees, expressed or implied, No operational assessments have been made by DPA Auctions on this item, it has been photographed ONLY.



#336 - Running Gear (PZ0487)

Running Gear (PZ0487), 5th wheel running gear, 14L-16.1 flotation tires. Notes: Item Location: Oneida, IL 61467 Equipment Sold "AS IS, WHERE IS": All equipment/property is sold "AS IS, WHERE IS" with no warranty or guarantees, expressed or implied, No operational assessments have been made by DPA Auctions on this item, it has been photographed ONLY.



#337 - Running Gear (PZ0488)

Running Gear (PZ0488), 5th wheel running gear, 12.5L-15 flotation tires. Notes: Item Location: Oneida, IL 61467 Equipment Sold "AS IS, WHERE IS": All equipment/property is sold "AS IS, WHERE IS" with no warranty or guarantees, expressed or implied, No operational assessments have been made by DPA Auctions on this item, it has been photographed ONLY.



#338 - 2012 B-B Running Gear (PZ0489, Unit 26845)

2012 B-B Running Gear (PZ0489, Unit 26845) 2011 B-B 5th wheel running gear, 14L-16.1 SL flotation tires. Notes: Item Location: Oneida, IL 61467 Equipment Sold "AS IS, WHERE IS": All equipment/property is sold "AS IS, WHERE IS" with no warranty or guarantees, expressed or implied, No operational assessments have been made by DPA Auctions on this item, it has been photographed ONLY.



#339 - 2012 B-B Running Gear (PZ0491, Unit 28167)

2012 B-B Running Gear (PZ0491, Unit 28167) 2011 B-B 5th wheel running gear, 14L-16.1 SL flotation tires. Notes: Item Location: Oneida, IL 61467 Equipment Sold "AS IS, WHERE IS": All equipment/property is sold "AS IS, WHERE IS" with no warranty or guarantees, expressed or implied, No operational assessments have been made by DPA Auctions on this item, it has been photographed ONLY.



#340 - 2010 B-B Running Gear (PZ0492)

2010 B-B Running Gear (PZ0492), 2010 B-B 5th wheel running gear, 14L-16.1 SL flotation ties. Notes: Item Location: Oneida, IL 61467 Equipment Sold "AS IS, WHERE IS": All equipment/property is sold "AS IS, WHERE IS" with no warranty or guarantees, expressed or implied, No operational assessments have been made by DPA Auctions on this item, it has been photographed ONLY.



#341 - Running Gear (PZ0493)

Running Gear (PZ0493), 5th wheel running gear, 11L-15 flotation tires. Notes: Item Location: Oneida, IL 61467 Equipment Sold "AS IS, WHERE IS": All equipment/property is sold "AS IS, WHERE IS" with no warranty or guarantees, expressed or implied, No operational assessments have been made by DPA Auctions on this item, it has been photographed ONLY.



#342 - Running Gear (PZ0494, Unit 76151)

Running Gear (PZ0494, Unit 76151), 5th wheel running gear, 11L-15 flotation tires. Notes: Item Location: Oneida, IL 61467 Equipment Sold "AS IS, WHERE IS": All equipment/property is sold "AS IS, WHERE IS" with no warranty or guarantees, expressed or implied, No operational assessments have been made by DPA Auctions on this item, it has been photographed ONLY.



#343 - Running Gear (PZ0497)

Running Gear (PZ0497), 5th wheel running gear, 11L-15 flotation tires. Notes: Item Location: Oneida, IL 61467 Equipment Sold "AS IS, WHERE IS": All equipment/property is sold "AS IS, WHERE IS" with no warranty or guarantees, expressed or implied, No operational assessments have been made by DPA Auctions on this item, it has been photographed ONLY.



#344 - (2) Flotation Tires (NP7412)

(2) Flotation Tires (NP7412), (2) 48x31.00-20 Super Terra Grip tires, very good condition. Notes: Item Location: Saint Peter, IL 62880 Equipment Sold "AS IS, WHERE IS": All equipment/property is sold "AS IS, WHERE IS" with no warranty or guarantees, expressed or implied, No operational assessments have been made by DPA Auctions on this item, it has been photographed ONLY.



#345 - Gauge Wheels (NP7413)

Gauge Wheels (NP7413), seller has the bolts for 4x4 or 4x6 frames. Notes: Item Location: Saint Peter, IL 62880 Equipment Sold "AS IS, WHERE IS": All equipment/property is sold "AS IS, WHERE IS" with no warranty or guarantees, expressed or implied, No operational assessments have been made by DPA Auctions on this item, it has been photographed ONLY.



#346 - Firestone Flotation Tire/Rim (NP7420)

Firestone Flotation Tire/Rim (NP7420), 66x43.00-25 size, 14 bolt rim pattern. Notes: Item Location: Saint Peter, IL 62880 Equipment Sold "AS IS, WHERE IS": All equipment/property is sold "AS IS, WHERE IS" with no warranty or guarantees, expressed or implied, No operational assessments have been made by DPA Auctions on this item, it has been photographed ONLY.



#347 - Fuel Tank & Steps (NP7408)

Fuel Tank & Steps (NP7408), came off Terra Gator 1803 floater. Notes: Item Location: Saint Peter, IL 62880 Equipment Sold "AS IS, WHERE IS": All equipment/property is sold "AS IS, WHERE IS" with no warranty or guarantees, expressed or implied, No operational assessments have been made by DPA Auctions on this item, it has been photographed ONLY.



#348 - Air Tank Box (NP7409)

Air Tank Box (NP7409). Notes: Item Location: Saint Peter, IL 62880 Equipment Sold "AS IS, WHERE IS": All equipment/property is sold "AS IS, WHERE IS" with no warranty or guarantees, expressed or implied, No operational assessments have been made by DPA Auctions on this item, it has been photographed ONLY.



#349 - Cat 3028 Engine & Transmission (NP7410)

Cat 3028 Engine & Transmission (NP7410), Cat 3208 diesel engine and Eaton 18 speed transmission. Notes: Item Location: Saint Peter, IL 62880 Equipment Sold "AS IS, WHERE IS": All equipment/property is sold "AS IS, WHERE IS" with no warranty or guarantees, expressed or implied, No operational assessments have been made by DPA Auctions on this item, it has been photographed ONLY.



#350 - Cab off Terra Gator 1803 (NP7411)

Cab off Terra Gator 1803 (NP7411). Notes: Item Location: Saint Peter, IL 62880 Equipment Sold "AS IS, WHERE IS": All equipment/property is sold "AS IS, WHERE IS" with no warranty or guarantees, expressed or implied, No operational assessments have been made by DPA Auctions on this item, it has been photographed ONLY.



#351 - Tandem Gauge Wheel Axles (NP7414)

Tandem Gauge Wheel Axles (NP7414), have w/ 700 hubs. Notes: Item Location: Saint Peter, IL 62880 Equipment Sold "AS IS, WHERE IS": All equipment/property is sold "AS IS, WHERE IS" with no warranty or guarantees, expressed or implied, No operational assessments have been made by DPA Auctions on this item, it has been photographed ONLY.



#352 - Rear Hitch for DMI Bar (NP7415)

Rear Hitch for DMI Bar (NP7415). Notes: Item Location: Saint Peter, IL 62880 Equipment Sold "AS IS, WHERE IS": All equipment/property is sold "AS IS, WHERE IS" with no warranty or guarantees, expressed or implied, No operational assessments have been made by DPA Auctions on this item, it has been photographed ONLY.



#353 - Singles Main Lift Axles (NP7416)

Singles Main Lift Axles (NP7416), for DMI 4100 or 4200. Notes: Item Location: Saint Peter, IL 62880 Equipment Sold "AS IS, WHERE IS": All equipment/property is sold "AS IS, WHERE IS" with no warranty or guarantees, expressed or implied, No operational assessments have been made by DPA Auctions on this item, it has been photographed ONLY.



#354 - Air Breather & Exhaust Pipe (NP7417)

Air Breather & Exhaust Pipe (NP7417), for Terra Gator 1803. Notes: Item Location: Saint Peter, IL 62880 Equipment Sold "AS IS, WHERE IS": All equipment/property is sold "AS IS, WHERE IS" with no warranty or guarantees, expressed or implied, No operational assessments have been made by DPA Auctions on this item, it has been photographed ONLY.



#355 - (19) Shield 600 NH3 Knives (NP7418)

(19) Shield 600 NH3 Knives (NP7418), 3/8 tubes. Notes: Item Location: Saint Peter, IL 62880 Equipment Sold "AS IS, WHERE IS": All equipment/property is sold "AS IS, WHERE IS" with no warranty or guarantees, expressed or implied, No operational assessments have been made by DPA Auctions on this item, it has been photographed ONLY.



#356 - (19) Conventional NH3 Knives (NP7419)

(19) Conventional NH3 Knives (NP7419), 3/8 tubes. Notes: Item Location: Saint Peter, IL 62880 Equipment Sold "AS IS, WHERE IS": All equipment/property is sold "AS IS, WHERE IS" with no warranty or guarantees, expressed or implied, No operational assessments have been made by DPA Auctions on this item, it has been photographed ONLY.



#357 - (9) Mini Mole Knives (NP7421)

(9) Mini Mole Knives (NP7421), 1/2 tubes, (5) single tubes, (4) double tubes. Notes: Item Location: Saint Peter, IL 62880 Equipment Sold "AS IS, WHERE IS": All equipment/property is sold "AS IS, WHERE IS" with no warranty or guarantees, expressed or implied, No operational assessments have been made by DPA Auctions on this item, it has been photographed ONLY.



#358 - Raven SlingShot (NP7422)

Raven SlingShot (NP7422). Notes: Item Location: Saint Peter, IL 62880 Equipment Sold "AS IS, WHERE IS": All equipment/property is sold "AS IS, WHERE IS" with no warranty or guarantees, expressed or implied, No operational assessments have been made by DPA Auctions on this item, it has been photographed ONLY.



#359 - 2010 Dodge 2500 Crew Cab 4x4 (KMK688, Unit 17065)

2010 Dodge 2500 Crew Cab 4x4 (KMK688, Unit 17065), 2500 heavy duty, Hemi 5.7 liter engine, automatic transmission, 4X4, cruise control, heat and air conditioning, power windows, power locks, power seat, tires are at approximately 25% tread, shows approximately 186,000 miles. Notes: Engine has severe miss, transmission shifts erratically, starter drags, need exhaust manifolds, has mild to moderate hail damage. PLEASE ALLOW AT LEAST 60 DAYS FOR TITLE TRANSFER. Item Location: Williston, ND 58801 Equipment Sold "AS IS, WHERE IS": All equipment/property is sold "AS IS, WHERE IS" with no warranty or guarantees, expressed or implied, No operational assessments have been made by DPA Auctions on this item, it has been photographed ONLY.



#360 - Hotsy Hot Water Pressure Washer (TH370)

Hotsy Hot Water Pressure Washer (TH370), new hose and gun, 110 volt, kerosene or diesel. Notes: Just reconditioned by Hotsy. Works Perfectly. Item Location: Havelock, IA 50546 Equipment Sold "AS IS, WHERE IS": All equipment/property is sold "AS IS, WHERE IS" with no warranty or guarantees, expressed or implied, No operational assessments have been made by DPA Auctions on this item, it has been photographed ONLY.



#361 - Gehl 2500 Skid Steer Loader (TH369)

Gehl 2500 Skid Steer Loader (TH369), 24hp gas engine, Lights, ROPS, quick tach 54" bucket. Notes: The loader has no hour meter and the serial number is not legible. Item Location: Havelock, IA 50546 Equipment Sold "AS IS, WHERE IS": All equipment/property is sold "AS IS, WHERE IS" with no warranty or guarantees, expressed or implied, No operational assessments have been made by DPA Auctions on this item, it has been photographed ONLY.

