

Auction catalog

Title	Online Auction - September 25, 2018 10AM Central
Description	The following line of Fertilizer, Farm Implement, Truck, Trailer & Construction Equipment will be sold online with the bidding ending on September 25, 2018. Location of the equipment is given. Bidding within the last minute before the closing of a lot will extend the bidding time by an additional minute. Be prepared to bid accordingly. For more information, contact Del Peterson & Associates: 419 West Judy Drive Fremont NE, 68025 Phone: 800-492-9090 or 402-721-4388 Fax: 402-721-4583 E-mail: auction@delpeterson.com
Date	Tue, Sep 25, 2018
Starts at	10:00 AM
Address	PO Box 654, Fremont, NE 68026 USA
Categories	

#1 - Suitcase Weights (PZ0011)

Suitcase Weights (PZ0011), 14 - 47 KG suitcase weights. Notes: Item Location: Templeton, IA 51463 Equipment Sold "AS IS, WHERE IS": All equipment/property is sold "AS IS, WHERE IS" with no warranty or guarantees, expressed or implied, No operational assessments have been made by DPA Auctions on this item, it has been photographed ONLY.



#2 - 1995 Mid State 2400 Gallon Stainless Steel Tank (ED612)

1995 Mid State 2400 Gallon Stainless Steel Tank (ED612), 2400 gallon tank, stainless 304, great condition, no leaks, tank has been steam cleaned. Notes: Item Location: Mansfield, IL 61854 Equipment Sold "AS IS, WHERE IS": All equipment/property is sold "AS IS, WHERE IS" with no warranty or guarantees, expressed or implied, No operational assessments have been made by DPA Auctions on this item, it has been photographed ONLY.



#3 - 1994 Mid State 1500 Gallon Stainless Steel Tank (ED613)

1994 Mid State 1500 Gallon Stainless Steel Tank (ED613), tank is in great condition, no leaks, tank has been steam cleaned. Notes: Item Location: Mansfield, IL 61854 Equipment Sold "AS IS, WHERE IS": All equipment/property is sold "AS IS, WHERE IS" with no warranty or guarantees, expressed or implied, No operational assessments have been made by DPA Auctions on this item, it has been photographed ONLY.



#4 - 1994 Mid State 1500 Gallon Stainless Steel Tank (ED614)

1994 Mid State 1500 Gallon Stainless Steel Tank (ED614), great condition, no leaks, tank has been steam cleaned. Notes: Item Location: Mansfield, IL 61854 Equipment Sold "AS IS, WHERE IS": All equipment/property is sold "AS IS, WHERE IS" with no warranty or guarantees, expressed or implied, No operational assessments have been made by DPA Auctions on this item, it has been photographed ONLY.



#5 - Shop lights (TR5817)

Shop lights (TR5817), (6) Shop lights, Lithonia 400 watt. Notes: Item Location: Davey, NE 68336 Equipment Sold "AS IS, WHERE IS": All equipment/property is sold "AS IS, WHERE IS" with no warranty or guarantees, expressed or implied, No operational assessments have been made by DPA Auctions on this item, it has been photographed ONLY.



#6 - Pumps (TR5818)

Pumps (TR5818), Mid Com pumps, with meters, MidCom 8000 registers. Notes: Item Location: Davey, NE 68336 Equipment Sold "AS IS, WHERE IS": All equipment/property is sold "AS IS, WHERE IS" with no warranty or guarantees, expressed or implied, No operational assessments have been made by DPA Auctions on this item, it has been photographed ONLY.



#7 - Liquid Pump (TR5819)

Liquid Pump (TR5819) TCS pump, with meter and stand, Model 682-15-AF-L. Notes: Item Location: Davey, NE 68336 Equipment Sold "AS IS, WHERE IS": All equipment/property is sold "AS IS, WHERE IS" with no warranty or guarantees, expressed or implied, No operational assessments have been made by DPA Auctions on this item, it has been photographed ONLY.



#8 - 175 Gallon Stainless Steel Tote (ED633)

175 Gallon Stainless Steel Tote (ED633), 4 foot tall, 4 foot in length, 3.5 feet wide. Notes: Item Location: Blairstown, IA 52209 Equipment Sold "AS IS, WHERE IS": All equipment/property is sold "AS IS, WHERE IS" with no warranty or guarantees, expressed or implied, No operational assessments have been made by DPA Auctions on this item, it has been photographed ONLY.



#9 - Millermatic 220 Welder/ Wire Feeder (TH327)

Millermatic 220 Welder/ Wire Feeder (TH327), Millermatic 220 with black front. Notes: Works great! Item Location: Coon Rapids, IA 50058 Equipment Sold "AS IS, WHERE IS": All equipment/property is sold "AS IS, WHERE IS" with no warranty or guarantees, expressed or implied, No operational assessments have been made by DPA Auctions on this item, it has been photographed ONLY.



#10 - 2 Goodyear 420/85R34 Tires (CG544)

2 Goodyear 420/85R34 Tires (CG544), 420/85R34 tractor tires, came off of a John Deere 8285. Notes: Item Location: Ellsworth, IA 50075 Equipment Sold "AS IS, WHERE IS": All equipment/property is sold "AS IS, WHERE IS" with no warranty or guarantees, expressed or implied, No operational assessments have been made by DPA Auctions on this item, it has been photographed ONLY.



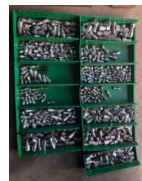
#11 - 36" Grain Cart 35.5L-32 Tire (AL508)

36" Grain Cart 35.5L-32 Tire (AL508), one year old diamond tread. Notes: Item Location: Aplington, IA 50604 Equipment Sold "AS IS, WHERE IS": All equipment/property is sold "AS IS, WHERE IS" with no warranty or guarantees, expressed or implied, No operational assessments have been made by DPA Auctions on this item, it has been photographed ONLY.



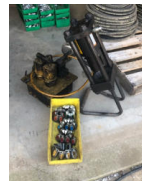
#12 - Parker Crimp-Style Hydraulic Hose Fittings (TH325)

Parker Crimp-Style Hydraulic Hose Fittings (TH325), Parker's hydraulic fittings are a complete range of cost-effective, permanent, crimp-style hydraulic hose fittings for use with the Parkrimp family of crimpers. Notes: Item Location: Ewing, IL 62836 Equipment Sold "AS IS, WHERE IS": All equipment/property is sold "AS IS, WHERE IS" with no warranty or guarantees, expressed or implied, No operational assessments have been made by DPA Auctions on this item, it has been photographed ONLY.



#13 - Karrykrimp 2 Hose Crimper, Powerpack And Dies (TH323)

Karrykrimp 2 Hose Crimper, Powerpack And Dies (TH323), The Karrykrimp 2 is a portable, compact and ruggedly built crimper that is an economic alternative for the self-assembly of Parker's hose and fittings, Parker's Karrykrimp 2 models can crimp Parkrimp style straight or bent-stem stainless and stainless steel fittings with dies of 1/4" to 5/8". Notes: Item Location: Ewing, IL 62836 Equipment Sold "AS IS, WHERE IS": All equipment/property is sold "AS IS, WHERE IS" with no warranty or guarantees, expressed or implied, No operational assessments have been made by DPA Auctions on this item, it has been photographed ONLY.



#14 - Parker Hydraulic Hose (TH324)

Parker Hydraulic Hose (TH324), Parker's hose is a hydraulic industry standard hose with a synthetic rubber inner tube which provides wide fluid compatibility. Notes: Item Location: Ewing, IL 62836 Equipment Sold "AS IS, WHERE IS": All equipment/property is sold "AS IS, WHERE IS" with no warranty or guarantees, expressed or implied, No operational assessments have been made by DPA Auctions on this item, it has been photographed ONLY.



#15 - Generac 25 KW Propane Generator (PZ0021)

Generac 25 KW Propane Generator (PZ0021), Generac model 00753-1 commercial grade propane generator, 3600 RPM, Fiat engine, block heater, liquid cooled, built in 200 Amp automatic transfer switch, single phase 120/240V, 104 amps at 240V, weather proof enclosure, shows 483 hours. Notes: Item Location: Springfield, IL 62703 Equipment Sold "AS IS, WHERE IS": All equipment/property is sold "AS IS, WHERE IS" with no warranty or guarantees, expressed or implied, No operational assessments have been made by DPA Auctions on this item, it has been photographed ONLY.



#16 - Generac 15 KW Propane Generator (PZ0022)

Generac 15 KW Propane Generator (PZ0022), Generac model 00995-1 commercial grade propane generator, 1800 RPM, Mitsubishi engine, block heater, liquid cooled, built in 200 Amp automatic transfer switch, single phase 120/240V, 62.5 amps at 240V, weather proof enclosure, shows 250 hours. Notes: Item Location: Springfield, IL 62703 Equipment Sold "AS IS, WHERE IS": All equipment/property is sold "AS IS, WHERE IS" with no warranty or guarantees, expressed or implied, No operational assessments have been made by DPA Auctions on this item, it has been photographed ONLY.



#17 - MY-D HAN-D Grain Auger (NP7051)

MY-D HAN-D Grain Auger (NP7051), approx. 8" x 26', portable, ST205/75R15 tires, 540 PTO. Notes: Item Location: Scott City, KS 67871 Equipment Sold "AS IS, WHERE IS": All equipment/property is sold "AS IS, WHERE IS" with no warranty or guarantees, expressed or implied, No operational assessments have been made by DPA Auctions on this item, it has been photographed ONLY.



#18 - 2007 Sudenga Super Scoop (NP7052)

2007 Sudenga Super Scoop (NP7052), 40', portable, 11L-15 tires, hydraulic lift, 540 PTO. Notes: Item Location: Scott City, KS 67871 Equipment Sold "AS IS, WHERE IS": All equipment/property is sold "AS IS, WHERE IS" with no warranty or guarantees, expressed or implied, No operational assessments have been made by DPA Auctions on this item, it has been photographed ONLY.



#19 - Portable Corn Roller (NP7054)

Portable Corn Roller (NP7054), 24", PTO drive, 235/75R15 tires. Notes: Item Location: Scott City, KS 67871 Equipment Sold "AS IS, WHERE IS": All equipment/property is sold "AS IS, WHERE IS" with no warranty or guarantees, expressed or implied, No operational assessments have been made by DPA Auctions on this item, it has been photographed ONLY.



#20 - Rotary Mower (NP7053)

Rotary Mower (NP7053), 6' width, 3 point, 540 PTO. Notes: Item Location: Scott City, KS 67871 Equipment Sold "AS IS, WHERE IS": All equipment/property is sold "AS IS, WHERE IS" with no warranty or guarantees, expressed or implied, No operational assessments have been made by DPA Auctions on this item, it has been photographed ONLY.



#21 - 3 Bottom Rotating Plow (NP7050)

3 Bottom Rotating Plow (NP7050), 3 point. Notes: Item Location: Scott City, KS 67871 Equipment Sold "AS IS, WHERE IS": All equipment/property is sold "AS IS, WHERE IS" with no warranty or guarantees, expressed or implied, No operational assessments have been made by DPA Auctions on this item, it has been photographed ONLY.



#22 - Case 480E LL Tractor/Loader (NP7048)

Case 480E LL Tractor/Loader (NP7048), open cab, diesel engine, front end loader, 80" bucket, PTO, 11L-16 front tires, 17.5L-24 rear tires, shows 488 hours. Notes: Item Location: Scott City, KS 67871 Equipment Sold "AS IS, WHERE IS": All equipment/property is sold "AS IS, WHERE IS" with no warranty or guarantees, expressed or implied, No operational assessments have been made by DPA Auctions on this item, it has been photographed ONLY.



#23 - 1994 J&S Trailer (NP7049)

1994 J&S Trailer (NP7049), approx. 83" wide x 16' long, tandem axle, spring suspension, wood deck, bumper hitch, 5' ramps, ST225/75R15 tires. Notes: 1 rear busted tail light. Item Location: Scott City, KS 67871 Equipment Sold "AS IS, WHERE IS": All equipment/property is sold "AS IS, WHERE IS" with no warranty or guarantees, expressed or implied, No operational assessments have been made by DPA Auctions on this item, it has been photographed ONLY.



#24 - NH3 Nurse Tank (PZ9930, Unit 150)

NH3 Nurse Tank (PZ9930, Unit 150), 1140 gallon NH3 nurse tank, top front fill, 5th wheel gear, poly water tank, 11L-15 flotation tires, data plate. Notes: Item Location: Armington, IL 61721 Equipment Sold "AS IS, WHERE IS": All equipment/property is sold "AS IS, WHERE IS" with no warranty or guarantees, expressed or implied, No operational assessments have been made by DPA Auctions on this item, it has been photographed ONLY.



#25 - NH3 Nurse Tank (PZ9931, Unit 118)

NH3 Nurse Tank (PZ9931, Unit 118), 1140 gallon NH3 nurse tank, top front fill, 5th wheel gear, poly water tank, 11L-15 flotation tires, data plate. Notes: Item Location: Armington, IL 61721 Equipment Sold "AS IS, WHERE IS": All equipment/property is sold "AS IS, WHERE IS" with no warranty or guarantees, expressed or implied, No operational assessments have been made by DPA Auctions on this item, it has been photographed ONLY.



#26 - NH3 Nurse Tank (PZ9932, Unit 160)

NH3 Nurse Tank (PZ9932, Unit 160), 1140 gallon NH3 nurse tank, top front fill, 5th wheel gear, poly water tank, 11L-15 flotation tires, data plate. Notes: Item Location: Armington, IL 61721 Equipment Sold "AS IS, WHERE IS": All equipment/property is sold "AS IS, WHERE IS" with no warranty or guarantees, expressed or implied, No operational assessments have been made by DPA Auctions on this item, it has been photographed ONLY.



#27 - NH3 Nurse Tank (PZ9933, Unit 117)

NH3 Nurse Tank (PZ9933, Unit 117), 1000 gallon NH3 nurse tank, top front fill, 5th wheel gear, poly water tank, 11L-15 flotation tires. Notes: Item Location: Armington, IL 61721 Equipment Sold "AS IS, WHERE IS": All equipment/property is sold "AS IS, WHERE IS" with no warranty or guarantees, expressed or implied, No operational assessments have been made by DPA Auctions on this item, it has been photographed ONLY.



#28 - NH3 Nurse Tank (PZ9934, Unit 116)

NH3 Nurse Tank (PZ9934, Unit 116), 1000 gallon NH3 nurse tank, top front fill, 5th wheel gear, poly water tank, 12.5L-15 flotation tires. Notes: Item Location: Armington, IL 61721 Equipment Sold "AS IS, WHERE IS": All equipment/property is sold "AS IS, WHERE IS" with no warranty or guarantees, expressed or implied, No operational assessments have been made by DPA Auctions on this item, it has been photographed ONLY.



#29 - NH3 Nurse Tank (PZ9935, Unit 16)

NH3 Nurse Tank (PZ9935, Unit 16), 1000 gallon NH3 nurse tank, top front fill, Ag Systems 5th wheel gear, poly water tank, 11L-15 flotation tires, data plate. Notes: Item Location: Armington, IL 61721 Equipment Sold "AS IS, WHERE IS": All equipment/property is sold "AS IS, WHERE IS" with no warranty or guarantees, expressed or implied, No operational assessments have been made by DPA Auctions on this item, it has been photographed ONLY.



#30 - NH3 Nurse Tank (PZ9936, Unit 44)

NH3 Nurse Tank (PZ9936, Unit 44), 1000 gallon NH3 nurse tank, top front fill, 5th wheel gear, poly water tank, 11L-15 flotation tires. Notes: Item Location: Armington, IL 61721 Equipment Sold "AS IS, WHERE IS": All equipment/property is sold "AS IS, WHERE IS" with no warranty or guarantees, expressed or implied, No operational assessments have been made by DPA Auctions on this item, it has been photographed ONLY.



#31 - NH3 Nurse Tank (PZ9937, Unit 35)

NH3 Nurse Tank (PZ9937, Unit 35), 1000 gallon NH3 nurse tank, top front fill, 5th wheel gear, poly water tank, 11L-15 flotation tires, data plate. Notes: Item Location: Armington, IL 61721 Equipment Sold "AS IS, WHERE IS": All equipment/property is sold "AS IS, WHERE IS" with no warranty or guarantees, expressed or implied, No operational assessments have been made by DPA Auctions on this item, it has been photographed ONLY.



#32 - 1997 Feterl Grain Auger (NP7055)

1997 Feterl Grain Auger (NP7055), approx. 12" x 120', portable, 12.5L-15 tires, swing hopper (disconnected), 540 PTO. Notes: Item Location: Healy, KS 67850 Equipment Sold "AS IS, WHERE IS": All equipment/property is sold "AS IS, WHERE IS" with no warranty or guarantees, expressed or implied, No operational assessments have been made by DPA Auctions on this item, it has been photographed ONLY.



#33 - Feterl Grain Auger (NP7092)

Feterl Grain Auger (NP7092), approx. 12" x 100', portable, swing away hopper, hydraulic, PTO, 9.5L-15 tires. Notes: Item Location: Atchison, KS 66002 Equipment Sold "AS IS, WHERE IS": All equipment/property is sold "AS IS, WHERE IS" with no warranty or guarantees, expressed or implied, No operational assessments have been made by DPA Auctions on this item, it has been photographed ONLY.



#34 - Mayrath Grain Auger (NP7094)

Mayrath Grain Auger (NP7094), approx. 10" x 51', portable, Marathon 25HP 3 phase electric motor, P225/75R15 tires. Notes: Item Location: Stella, NE 68442 Equipment Sold "AS IS, WHERE IS": All equipment/property is sold "AS IS, WHERE IS" with no warranty or guarantees, expressed or implied, No operational assessments have been made by DPA Auctions on this item, it has been photographed ONLY.



#35 - Sudenga Super Scoop (NP7097)

Sudenga Super Scoop (NP7097), 8' auger width, 3 point mount, hydraulic, PTO, portable, 11L-15 tires (tires are flat). Notes: Item Location: Hamburg, IA 51640 Equipment Sold "AS IS, WHERE IS": All equipment/property is sold "AS IS, WHERE IS" with no warranty or guarantees, expressed or implied, No operational assessments have been made by DPA Auctions on this item, it has been photographed ONLY.



#36 - John Deere Rotary Mower (NP7098)

John Deere Rotary Mower (NP7098), Model 261 grooming mower, approx. 5' width, 3 point, PTO. Notes: Item Location: Hamburg, IA 51640 Equipment Sold "AS IS, WHERE IS": All equipment/property is sold "AS IS, WHERE IS" with no warranty or guarantees, expressed or implied, No operational assessments have been made by DPA Auctions on this item, it has been photographed ONLY.



#37 - 2000 Bobcat 763 Skid Steer (NP7101)

2000 Bobcat 763 Skid Steer (NP7101), Kubota 2.2L diesel engine, joystick controls, 10-16.5 tires, approx. 60" bucket, traction lock override, shows 3,449 hours. Notes: Item Location: Hamburg, IA 51640 Equipment Sold "AS IS, WHERE IS": All equipment/property is sold "AS IS, WHERE IS" with no warranty or guarantees, expressed or implied, No operational assessments have been made by DPA Auctions on this item, it has been photographed ONLY.



#38 - 2001 CaseIH D33 Tractor (NP7095)

2001 CaseIH D33 Tractor (NP7095), 4WD, Shibaura diesel engine, rollover bar, 3 point, PTO, 25x8.50-14 front tires, 15x19.5 rear tires, Woods Groundmover LC96 front end loader (S/N 18179752), 66" quick tach bucket, shows 1,948 hours. Notes: Item Location: Hamburg, IA 51640 Equipment Sold "AS IS, WHERE IS": All equipment/property is sold "AS IS, WHERE IS" with no warranty or guarantees, expressed or implied, No operational assessments have been made by DPA Auctions on this item, it has been photographed ONLY.



#39 - NH3 Nurse Tank (PZ9938, Unit 45)

NH3 Nurse Tank (PZ9938, Unit 45), 1000 gallon NH3 nurse tank, top front fill, 5th wheel gear, poly water tank, 11L-15 flotation tires, data plate. Notes: Item Location: Armington, IL 61721 Equipment Sold "AS IS, WHERE IS": All equipment/property is sold "AS IS, WHERE IS" with no warranty or guarantees, expressed or implied, No operational assessments have been made by DPA Auctions on this item, it has been photographed ONLY.



#40 - NH3 Nurse Tank (PZ9939, Unit 38)

NH3 Nurse Tank (PZ9939, Unit 38), 1000 gallon NH3 nurse tank, top front fill, 5th wheel gear, poly water tank, 11L-15 flotation tires, data plate. Notes: Item Location: Armington, IL 61721 Equipment Sold "AS IS, WHERE IS": All equipment/property is sold "AS IS, WHERE IS" with no warranty or guarantees, expressed or implied, No operational assessments have been made by DPA Auctions on this item, it has been photographed ONLY.



#41 - NH3 Nurse Tank (PZ9940, Unit 13)

NH3 Nurse Tank (PZ9940, Unit 13), 1000 gallon NH3 nurse tank, top front fill, 5th wheel gear, poly water tank, 11L-15 flotation tires, data plate. Notes: Item Location: Armington, IL 61721 Equipment Sold "AS IS, WHERE IS": All equipment/property is sold "AS IS, WHERE IS" with no warranty or guarantees, expressed or implied, No operational assessments have been made by DPA Auctions on this item, it has been photographed ONLY.



#42 - NH3 Nurse Tank (PZ9941, Unit 46)

NH3 Nurse Tank (PZ9941, Unit 46), 1000 gallon NH3 nurse tank, top front fill, 5th wheel gear, poly water tank, 11L-15 flotation tires, data plate. Notes: Item Location: Armington, IL 61721 Equipment Sold "AS IS, WHERE IS": All equipment/property is sold "AS IS, WHERE IS" with no warranty or guarantees, expressed or implied, No operational assessments have been made by DPA Auctions on this item, it has been photographed ONLY.



#43 - NH3 Nurse Tank (PZ9942, Unit 26)

NH3 Nurse Tank (PZ9942, Unit 26), 1000 gallon NH3 nurse tank, top front fill, 5th wheel gear, poly water tank, 11L-15 flotation tires. Notes: Item Location: Armington, IL 61721 Equipment Sold "AS IS, WHERE IS": All equipment/property is sold "AS IS, WHERE IS" with no warranty or guarantees, expressed or implied, No operational assessments have been made by DPA Auctions on this item, it has been photographed ONLY.



#44 - NH3 Nurse Tank (PZ9943, Unit 37)

NH3 Nurse Tank (PZ9942, Unit 26), 1000 gallon NH3 nurse tank, top front fill, 5th wheel gear, poly water tank, 11L-15 flotation tires. Notes: Item Location: Armington, IL 61721 Equipment Sold "AS IS, WHERE IS": All equipment/property is sold "AS IS, WHERE IS" with no warranty or guarantees, expressed or implied, No operational assessments have been made by DPA Auctions on this item, it has been photographed ONLY.



#45 - NH3 Nurse Tank (PZ9944, Unit 11)

NH3 Nurse Tank (PZ9944, Unit 11), 1000 gallon NH3 nurse tank, top front fill, 5th wheel gear, poly water tank, 11L-15 flotation tires. Notes: Item Location: Armington, IL 61721 Equipment Sold "AS IS, WHERE IS": All equipment/property is sold "AS IS, WHERE IS" with no warranty or guarantees, expressed or implied, No operational assessments have been made by DPA Auctions on this item, it has been photographed ONLY.



#46 - NH3 Nurse Tank (PZ9945, Unit 10)

NH3 Nurse Tank (PZ9945, Unit 10), 1000 gallon NH3 nurse tank, top front fill, 5th wheel gear, poly water tank, 12.5L-15 flotation tires, data plate. Notes: Item Location: Armington, IL 61721 Equipment Sold "AS IS, WHERE IS": All equipment/property is sold "AS IS, WHERE IS" with no warranty or guarantees, expressed or implied, No operational assessments have been made by DPA Auctions on this item, it has been photographed ONLY.



#47 - 1993 Gold Star Tilt Bed Trailer (NP7096)

1993 Gold Star Tilt Bed Trailer (NP7096), approx. 7' wide x 16' long, w/ 2' beaver tail, wood deck, tandem axle, bumper hitch, ST225/75R15 tires. Notes: This trailer has NO TITLE. Item Location: Hamburg, IA 51640 Equipment Sold "AS IS, WHERE IS": All equipment/property is sold "AS IS, WHERE IS" with no warranty or guarantees, expressed or implied, No operational assessments have been made by DPA Auctions on this item, it has been photographed ONLY.



#48 - 2013 FT Trailer Mfg. Flatbed Trailer (NP7099)

2013 FT Trailer Mfg. Flatbed Trailer (NP7099), Model FD-304 REV A, approx. 82" wide x 16' long, 2' beaver tail, wood deck, tandme axle, 5' fold down ramps, bumper hitch, 2 5/16" ball, ST235/80R16 tires, GVWR 12,000lbs. Notes: Item Location: Hamburg, IA 51640 Equipment Sold "AS IS, WHERE IS": All equipment/property is sold "AS IS, WHERE IS" with no warranty or guarantees, expressed or implied, No operational assessments have been made by DPA Auctions on this item, it has been photographed ONLY.



#49 - FT Trailer Mfg. Tilt Trailer (NP7100)

FT Trailer Mfg. Tilt Trailer (NP7100), approx. 8' x 5' bed, wood deck, single axle, bumper hitch, ST205/75D15, NO endgate. Notes: This trailer has NO TITLE. Item Location: Hamburg, IA 51640 Equipment Sold "AS IS, WHERE IS": All equipment/property is sold "AS IS, WHERE IS" with no warranty or guarantees, expressed or implied, No operational assessments have been made by DPA Auctions on this item, it has been photographed ONLY.



#50 - 1991 Shuttle Wagon Railcar Mower (NP7103)

1991 Shuttle Wagon Railcar Mower (NP7103), Model SWX35A, Cummins 6CT diesel engine, cab, heat, Am/Fm radio, Cattron MP96RL remote control, rail air brake reservoir, hydraulic reservoir, 12R22.5 tires (all flat), shows 29,744 hours. Notes: Currently has broken drive shaft and steering knuckle, cracked front windshield. Removal, loading and transportation is at the expense, risk and liability of the buyer. Item Location: Council Bluffs, IA 51503 Equipment Sold "AS IS, WHERE IS": All equipment/property is sold "AS IS, WHERE IS" with no warranty or guarantees, expressed or implied, No operational assessments have been made by DPA Auctions on this item, it has been photographed ONLY.



#51 - NEW Diamond Riveted Roller Chain (NP7086)

NEW Diamond Riveted Roller Chain (NP7086), X-1174-70P, 10.21 feet, NO. 140 cotter type connecting link. Notes: BRAND NEW, never taken out of the box. Item Location: Wichita, KS 67219 Equipment Sold "AS IS, WHERE IS": All equipment/property is sold "AS IS, WHERE IS" with no warranty or guarantees, expressed or implied, No operational assessments have been made by DPA Auctions on this item, it has been photographed ONLY.



#52 - 1988 Dorsey Flatbed Trailer (NP7093)

1988 Dorsey Flatbed Trailer (NP7093), approx. 45' length, wood deck, spread axle, air ride suspension, 11R24.5 tires, D-Rings, spare tire. Notes: Item Location: Saint Joseph, MO 64502 Equipment Sold "AS IS, WHERE IS": All equipment/property is sold "AS IS, WHERE IS" with no warranty or guarantees, expressed or implied, No operational assessments have been made by DPA Auctions on this item, it has been photographed ONLY.



#53 - 2003 Ford F-150 XLT Pickup (NP7085)

2003 Ford F-150 XLT Pickup (NP7085), 4x2, regular cab, Triton 5.4L gas engine, automatic transmission, heat, air conditioning, Am/Fm radio, power windows, locks and mirrors, cruise, 235/70R16 tires, rear hitch, shows 163,387 miles. Notes: NO TAILGATE. Item Location: Great Bend, KS 67530 Equipment Sold "AS IS, WHERE IS": All equipment/property is sold "AS IS, WHERE IS" with no warranty or guarantees, expressed or implied, No operational assessments have been made by DPA Auctions on this item, it has been photographed ONLY.



#54 - 2011 Ford F-250 Super Duty 4x4 Pickup (NP7088)

2011 Ford F-250 Super Duty 4x4 Pickup (NP7088), extended cab, 6.7L V8 Power Stroke diesel engine, 6-speed automatic transmission, heat, air conditioning, Am/Fm CD radio, cruise control, power windows, locks and mirrors, Reading SC100FSDSECTWR topper (S/N 718945), 3 side storage compartments, LT265/70R17 tires, tow package, running boards, shows 273,063 miles. Notes: Item Location: Kansas City, MO 64112 Equipment Sold "AS IS, WHERE IS": All equipment/property is sold "AS IS, WHERE IS" with no warranty or guarantees, expressed or implied, No operational assessments have been made by DPA Auctions on this item, it has been photographed ONLY.



#55 - NH3 Nurse Tank (PZ9946, Unit 2)

NH3 Nurse Tank (PZ9946, Unit 2), 1000 gallon NH3 nurse tank, top front fill, 5th wheel gear, poly water tank, 11L-15 flotation tires, data plate. Notes: Item Location: Armington, IL 61721 Equipment Sold "AS IS, WHERE IS": All equipment/property is sold "AS IS, WHERE IS" with no warranty or guarantees, expressed or implied, No operational assessments have been made by DPA Auctions on this item, it has been photographed ONLY.



#56 - NH3 Nurse Tank (PZ9947, Unit 152)

NH3 Nurse Tank (PZ9947, Unit 152), 1000 gallon NH3 nurse tank, top front fill, 5th wheel gear, poly water tank, 11L-15 flotation tires, data plate. Notes: Item Location: Armington, IL 61721 Equipment Sold "AS IS, WHERE IS": All equipment/property is sold "AS IS, WHERE IS" with no warranty or guarantees, expressed or implied, No operational assessments have been made by DPA Auctions on this item, it has been photographed ONLY.



#57 - NH3 Nurse Tank (PZ9948, Unit 151)

NH3 Nurse Tank (PZ9948, Unit 151), 1000 gallon NH3 nurse tank, top front fill, 5th wheel gear, poly water tank, 11L-15 flotation tires, data plate. Notes: Item Location: Armington, IL 61721 Equipment Sold "AS IS, WHERE IS": All equipment/property is sold "AS IS, WHERE IS" with no warranty or guarantees, expressed or implied, No operational assessments have been made by DPA Auctions on this item, it has been photographed ONLY.



#58 - NH3 Nurse Tank (PZ9949, Unit 145)

NH3 Nurse Tank (PZ9949, Unit 145), 1000 gallon NH3 nurse tank, top front fill, 5th wheel gear, poly water tank, 11L-15 flotation tires, data plate. Notes: Item Location: Armington, IL 61721 Equipment Sold "AS IS, WHERE IS": All equipment/property is sold "AS IS, WHERE IS" with no warranty or guarantees, expressed or implied, No operational assessments have been made by DPA Auctions on this item, it has been photographed ONLY.



#59 - NH3 Nurse Tank (PZ9950, Unit 155)

NH3 Nurse Tank (PZ9950, Unit 155), 1000 gallon NH3 nurse tank, top front fill, 5th wheel gear, poly water tank, 11L-15 flotation tires, data plate. Notes: Item Location: Armington, IL 61721 Equipment Sold "AS IS, WHERE IS": All equipment/property is sold "AS IS, WHERE IS" with no warranty or guarantees, expressed or implied, No operational assessments have been made by DPA Auctions on this item, it has been photographed ONLY.



#60 - NH3 Nurse Tank (PZ9951, Unit 47)

NH3 Nurse Tank (PZ9951, Unit 47), 1000 gallon NH3 nurse tank, top front fill, 5th wheel gear, poly water tank, 12.5L-15 flotation tires, data plate. Notes: Item Location: Armington, IL 61721 Equipment Sold "AS IS, WHERE IS": All equipment/property is sold "AS IS, WHERE IS" with no warranty or guarantees, expressed or implied, No operational assessments have been made by DPA Auctions on this item, it has been photographed ONLY.



#61 - NH3 Nurse Tank (PZ9952, Unit 55)

NH3 Nurse Tank (PZ9952, Unit 55), 1000 gallon NH3 nurse tank, top front fill, 5th wheel gear, poly water tank, 11L-15 flotation tires, data plate. Notes: Item Location: Armington, IL 61721 Equipment Sold "AS IS, WHERE IS": All equipment/property is sold "AS IS, WHERE IS" with no warranty or guarantees, expressed or implied, No operational assessments have been made by DPA Auctions on this item, it has been photographed ONLY.



#62 - NH3 Nurse Tank (PZ9953, Unit 19)

NH3 Nurse Tank (PZ9952, Unit 55), 1000 gallon NH3 nurse tank, top front fill, 5th wheel gear, poly water tank, 11L-15 flotation tires, data plate. Notes: Item Location: Armington, IL 61721 Equipment Sold "AS IS, WHERE IS": All equipment/property is sold "AS IS, WHERE IS" with no warranty or guarantees, expressed or implied, No operational assessments have been made by DPA Auctions on this item, it has been photographed ONLY.



#63 - 2008 Ford F-150 XLT 4x4 Pickup (NP7089)

2008 Ford F-150 XLT 4x4 Pickup (NP7089), crew cab, 5.4L 3V Triton gas engine, automatic transmission, heat, air conditioning, Am/Fm CD radio, cruise, power windows, locks and mirrors, Renegade grill guard, Ford running boards, LT275/65R18, tow package, shows 165,133 miles. Notes: Cracks in the windshield, see photos. Brake light was lit up on the dash. Item Location: Kansas City, MO 64112 Equipment Sold "AS IS, WHERE IS": All equipment/property is sold "AS IS, WHERE IS" with no warranty or guarantees, expressed or implied, No operational assessments have been made by DPA Auctions on this item, it has been photographed ONLY.



#64 - (2) Car Puller Hydraulic Units/Reservoirs (NP7091)

(2) Car Puller Hydraulic Units/Reservoirs (NP7091), (2) Leeson 30HP 3 phase electric motors, (2) Air Hydraulic Systems, Inc. electric master control board. Notes: Item Location: Kansas City, KS 66115 Equipment Sold "AS IS, WHERE IS": All equipment/property is sold "AS IS, WHERE IS" with no warranty or guarantees, expressed or implied, No operational assessments have been made by DPA Auctions on this item, it has been photographed ONLY.



#65 - New Idea Grain Piler (NP7102)

New Idea Grain Piler (NP7102), Model 802C, The Gobbler manufactured by Swift, Cummins diesel engine, manual transmission, heat, air conditioning, cab cam, 36" wide conveyor, 2007 Belt-Way Conveyor Belt Scales System Model 100 w/ cab controls, 12' wide header, 13.50-16.1 rear tires, 28L-26 front tires, shows 4,788 hours. Notes: Item Location: Hamburg, IA 51640 Equipment Sold "AS IS, WHERE IS": All equipment/property is sold "AS IS, WHERE IS" with no warranty or guarantees, expressed or implied, No operational assessments have been made by DPA Auctions on this item, it has been photographed ONLY.



#66 - NEW Diamond Riveted Roller Chain (NP7087)

NEW Diamond Riveted Roller Chain (NP7087), X-1174-70P, 10.21 feet, NO. 140 cotter type connecting link. Notes: BRAND NEW, never taken out of the box. Item Location: Wichita, KS 67219 Equipment Sold "AS IS, WHERE IS": All equipment/property is sold "AS IS, WHERE IS" with no warranty or guarantees, expressed or implied, No operational assessments have been made by DPA Auctions on this item, it has been photographed ONLY.



#67 - 2013 Great Plains Turbo Max 1800 (DL355)

2013 Great Plains Turbo Max 1800 (DL355), Vertical tillage tool, hydraulic adjustable gangs 0-6 degrees, 18.5 inch front blades, 19 inch blades on rear, rolling harrow and basket, 2nd owner. Notes: Item Location: River Falls, WI 54022 Equipment Sold "AS IS, WHERE IS": All equipment/property is sold "AS IS, WHERE IS" with no warranty or guarantees, expressed or implied, No operational assessments have been made by DPA Auctions on this item, it has been photographed ONLY.



#68 - 2015 Ag Systems Fertilizer Spreader (DL353)

2015 Ag Systems Fertilizer Spreader (DL353), 2015 Ag Systems AG600-HC fertilizer spreader, farmer owned, hardly used and always shedded, hydraulic shutoff, roll tarp, twin spinners, side ladder, almost new condition. Notes: Item Location: River Falls, WI 54022 Equipment Sold "AS IS, WHERE IS": All equipment/property is sold "AS IS, WHERE IS" with no warranty or guarantees, expressed or implied, No operational assessments have been made by DPA Auctions on this item, it has been photographed ONLY.



#69 - 1979 Ford L9000 (DL354)

1979 Ford L9000 (DL354), 855 Cummins engine, Eaton 9 Speed Transmission, 1600 gallon poly tank, 24ft bed w/ room for totes, excellent tires, cab has some rust as it had a dry tender box at one point, runs and drives excellent, shows 364,916 miles. Notes: Has about 50,000 miles on an overhaul. Item Location: River Falls, WI 54022 Equipment Sold "AS IS, WHERE IS": All equipment/property is sold "AS IS, WHERE IS" with no warranty or guarantees, expressed or implied, No operational assessments have been made by DPA Auctions on this item, it has been photographed ONLY.



#70 - NH3 Nurse Tank (PZ9954, Unit 60)

NH3 Nurse Tank (PZ9954, Unit 60), 1000 gallon NH3 nurse tank, top front fill, 5th wheel gear, poly water tank, 11L-15 flotation tires, data plate. Notes: Item Location: Armington, IL 61721 Equipment Sold "AS IS, WHERE IS": All equipment/property is sold "AS IS, WHERE IS" with no warranty or guarantees, expressed or implied, No operational assessments have been made by DPA Auctions on this item, it has been photographed ONLY.



#71 - NH3 Nurse Tank (PZ9955, Unit 92)

NH3 Nurse Tank (PZ9955, Unit 92), 1000 gallon NH3 nurse tank, top front fill, 5th wheel gear, poly water tank, 11L-15 flotation tires, data plate. Notes: Item Location: Armington, IL 61721 Equipment Sold "AS IS, WHERE IS": All equipment/property is sold "AS IS, WHERE IS" with no warranty or guarantees, expressed or implied, No operational assessments have been made by DPA Auctions on this item, it has been photographed ONLY.



#72 - NH3 Nurse Tank (PZ9956, Unit 2)

NH3 Nurse Tank (PZ9956, Unit 2), 1000 gallon NH3 nurse tank, top front fill, 5th wheel gear, poly water tank, 11L-15 flotation tires, data plate. Notes: Item Location: Armington, IL 61721 Equipment Sold "AS IS, WHERE IS": All equipment/property is sold "AS IS, WHERE IS" with no warranty or guarantees, expressed or implied, No operational assessments have been made by DPA Auctions on this item, it has been photographed ONLY.



#73 - NH3 Nurse Tank (PZ9957, Unit 59)

NH3 Nurse Tank (PZ9957, Unit 59), 1000 gallon NH3 nurse tank, top front fill, 5th wheel gear, poly water tank, 11L-15 flotation tires, data plate. Notes: Item Location: Armington, IL 61721 Equipment Sold "AS IS, WHERE IS": All equipment/property is sold "AS IS, WHERE IS" with no warranty or guarantees, expressed or implied, No operational assessments have been made by DPA Auctions on this item, it has been photographed ONLY.



#74 - NH3 Nurse Tank (PZ9958, Unit 33)

NH3 Nurse Tank (PZ9958, Unit 33), 1000 gallon NH3 nurse tank, top front fill, 5th wheel gear, poly water tank, 11L-15 flotation tires, data plate. Notes: Item Location: Armington, IL 61721 Equipment Sold "AS IS, WHERE IS": All equipment/property is sold "AS IS, WHERE IS" with no warranty or guarantees, expressed or implied, No operational assessments have been made by DPA Auctions on this item, it has been photographed ONLY.



#75 - NH3 Nurse Tank (PZ9959, Unit 91)

NH3 Nurse Tank (PZ9959, Unit 91), 1000 gallon NH3 nurse tank, top front fill, 5th wheel gear, poly water tank, 12.5L-15 flotation tires, data plate. Notes: Item Location: Armington, IL 61721 Equipment Sold "AS IS, WHERE IS": All equipment/property is sold "AS IS, WHERE IS" with no warranty or guarantees, expressed or implied, No operational assessments have been made by DPA Auctions on this item, it has been photographed ONLY.



#76 - NH3 Nurse Tank (PZ9960, Unit 99)

NH3 Nurse Tank (PZ9960, Unit 99), 1000 gallon NH3 nurse tank, top front fill, 5th wheel gear, poly water tank, 11L-15 flotation tires, data plate. Notes: Item Location: Armington, IL 61721 Equipment Sold "AS IS, WHERE IS": All equipment/property is sold "AS IS, WHERE IS" with no warranty or guarantees, expressed or implied, No operational assessments have been made by DPA Auctions on this item, it has been photographed ONLY.



#77 - NH3 Nurse Tank (PZ9961, Unit 153)

NH3 Nurse Tank (PZ9961, Unit 153), 1000 gallon NH3 nurse tank, top front fill, 5th wheel gear, poly water tank, 11L-15 flotation tires, data plate. Notes: Item Location: Armington, IL 61721 Equipment Sold "AS IS, WHERE IS": All equipment/property is sold "AS IS, WHERE IS" with no warranty or guarantees, expressed or implied, No operational assessments have been made by DPA Auctions on this item, it has been photographed ONLY.



#78 - 2004 International 7400 Dry Floater (NP7118)

2004 International 7400 Dry Floater (NP7118), Loral-6300 Easy Rider, IHC 466 diesel engine, Allison automatic transmission, heat, air conditioning, Am/Fm radio, New Leader G4 stainless steel dry spreader box (S/N 118555), manual tarp, dual spinners, New Leader MultApplier L3220G4 stainless steel insert (S/N 117785), belt over chain, hydraulic, 1000/50R25 rear tires, 48x25.00-20 front tires, lightbar, Raven Viper Pro, shows 55,076 miles, shows 4,457 hours. Notes: Item Location: Bowling Green, MO 63334 Equipment Sold "AS IS, WHERE IS": All equipment/property is sold "AS IS, WHERE IS" with no warranty or guarantees, expressed or implied, No operational assessments have been made by DPA Auctions on this item, it has been photographed ONLY.



#79 - Y Drops (PZ0009)

Y Drops (PZ0009), 24 - 360 Y-Drops, brackets. Notes: Item Location: Jefferson, IA 50129 Equipment Sold "AS IS, WHERE IS": All equipment/property is sold "AS IS, WHERE IS" with no warranty or guarantees, expressed or implied, No operational assessments have been made by DPA Auctions on this item, it has been photographed ONLY.



#80 - Flotation Tire (PZ0008)

Flotation Tire (PZ0008), Michelin Mega X Bib 1050/50R32 flotation tire. Notes: Please contact seller about tire. Item Location: Jefferson, IA 50129 Equipment Sold "AS IS, WHERE IS": All equipment/property is sold "AS IS, WHERE IS" with no warranty or guarantees, expressed or implied, No operational assessments have been made by DPA Auctions on this item, it has been photographed ONLY.



#81 - 1993 IHC 2674 Feed Truck (PZ0010, Unit W56)

1993 IHC 2674 Feed Truck (PZ0010, Unit W56), Cummins diesel engine (Non runner), 8 speed transmission, air conditioning, heat, Am/Fm radio, tandem axle, cheater axle, CEI Pacer model A65 bulk feed body (S/N A65-24-671), cargo doors, overhead auger system, roll over tarp, 385/65R22.5 front tires, 11R22.5 rear tires, 11R22.5 cheater tires. Notes: This truck is a NOT runner, please contact seller for all the details. Item Location: Ralston, IA 51459 Equipment Sold "AS IS, WHERE IS": All equipment/property is sold "AS IS, WHERE IS" with no warranty or guarantees, expressed or implied, No operational assessments have been made by DPA Auctions on this item, it has been photographed ONLY.



#82 - 1997 John Deere 6400 Tractor (NP7106)

1997 John Deere 6400 Tractor (NP7106), diesel engine, canopy, 3 point, PTO, 2 port hydraulics, good tires, shows 1,724 hours. Notes: Item Location: Marshall, MO 65340 Equipment Sold "AS IS, WHERE IS": All equipment/property is sold "AS IS, WHERE IS" with no warranty or guarantees, expressed or implied, No operational assessments have been made by DPA Auctions on this item, it has been photographed ONLY.



#84 - Stainless Booms (TR5870)

Stainless Booms (TR5870), stainless steel booms off of Air Max box. Notes: Item Location: Nehawka, NE 68413 Equipment Sold "AS IS, WHERE IS": All equipment/property is sold "AS IS, WHERE IS" with no warranty or guarantees, expressed or implied, No operational assessments have been made by DPA Auctions on this item, it has been photographed ONLY.



#85 - 2006 TerraGator 8103 with New Leader 3020 G4 Dry Box (ED610)

2006 TerraGator 8103 with New Leader 3020 G4 Dry Box (ED610), John Deere diesel engine SN RG6081H283469, Terra Shift transmission, Raven Viper Pro monitor, tires are in good shape with 40% tread, 12.5' dry box, brand new turbo and rebuilt oil cooler, shows 6832 hours, New Leader SN 122783. Notes: Machine hours may go up as this rig is still in use. This unit is field ready. Item Location: Blissfield, MI 49228 Equipment Sold "AS IS, WHERE IS": All equipment/property is sold "AS IS, WHERE IS" with no warranty or guarantees, expressed or implied, No operational assessments have been made by DPA Auctions on this item, it has been photographed ONLY.



#86 - Nitromaster 8500 Tool Bar (KMK611)

Nitromaster 8500 Tool Bar (KMK611), Ag Systems Nitromaster 8500 series, 24 knife tool bar, 30" spacing, coulters, double disk closers, hydraulic wings, Raven NH3 Super Cooler, 2 valves, one for each side, 11-22.5 tires. Notes: Item Location: Jamestown, ND 58401 Equipment Sold "AS IS, WHERE IS": All equipment/property is sold "AS IS, WHERE IS" with no warranty or guarantees, expressed or implied, No operational assessments have been made by DPA Auctions on this item, it has been photographed ONLY.



#87 - 2004 New Leader Dry Box (AM100)

2004 New Leader Dry Box (AM100), 2004 New Leader L3020 G4 12.5' dry spreader box, model 124814, belt over chain, twin spinner, all hydraulic. Notes: Fenders placed in box for shipping purposes. Item Location: Durand, MI 48429 Equipment Sold "AS IS, WHERE IS": All equipment/property is sold "AS IS, WHERE IS" with no warranty or guarantees, expressed or implied, No operational assessments have been made by DPA Auctions on this item, it has been photographed ONLY.



#88 - 1996 International 2674 Floater Truck (TH331)

1996 International 2674 Floater Truck (TH331), diesel engine, Allison automatic transmission, New Leader L3020 G4 stainless steel dry spreader box, front 48x25.00-20 tires, rear 66x43.00-25 tires, heat, air break/air ride seat, Mark IV.4 controller, rebuilt PTO pump and hydraulic motors for spinners, hi-lo rear end, NEW filters, radiator, belt & bed seals. Notes: This unit does not have a title. Item Location: Warrensburg, MO 64093 Equipment Sold "AS IS, WHERE IS": All equipment/property is sold "AS IS, WHERE IS" with no warranty or guarantees, expressed or implied, No operational assessments have been made by DPA Auctions on this item, it has been photographed ONLY.



#89 - 2015 New Leader L4258G4 Dry Spreader Box (PZ0114)

2015 New Leader L4258G4 Dry Spreader Box (PZ0114), 2015 New Leader model 545967D1 - 11', L4258 G4 - 11' dry spreader box, twin spinner, all hydraulic, electric roll over tarp, comes with pump and lift arms. Notes: Bed has spread less than 600 acres. Item Location: Effingham, IL 62401 Equipment Sold "AS IS, WHERE IS": All equipment/property is sold "AS IS, WHERE IS" with no warranty or guarantees, expressed or implied, No operational assessments have been made by DPA Auctions on this item, it has been photographed ONLY.



#90 - NH3 Nurse Tank (PZ9962, Unit 139)

NH3 Nurse Tank (PZ9962, Unit 139), 1000 gallon NH3 nurse tank, top front fill, 5th wheel gear, poly water tank, 11L-15 flotation tires, data plate. Notes: Item Location: Armington, IL 61721 Equipment Sold "AS IS, WHERE IS": All equipment/property is sold "AS IS, WHERE IS" with no warranty or guarantees, expressed or implied, No operational assessments have been made by DPA Auctions on this item, it has been photographed ONLY.



#91 - NH3 Nurse Tank (PZ9963, Unit 14)

NH3 Nurse Tank (PZ9963, Unit 14), 1000 gallon NH3 nurse tank, top front fill, 5th wheel gear, poly water tank, 12.5L-15 flotation tires, data plate. Notes: Item Location: Armington, IL 61721 Equipment Sold "AS IS, WHERE IS": All equipment/property is sold "AS IS, WHERE IS" with no warranty or guarantees, expressed or implied, No operational assessments have been made by DPA Auctions on this item, it has been photographed ONLY.



#92 - NH3 Nurse Tank (PZ9964, Unit 10)

NH3 Nurse Tank (PZ9964, Unit 10), 1000 gallon NH3 nurse tank, top front fill, 5th wheel gear, poly water tank, 12.5L-15 flotation tires, data plate. Notes: Item Location: Armington, IL 61721 Equipment Sold "AS IS, WHERE IS": All equipment/property is sold "AS IS, WHERE IS" with no warranty or guarantees, expressed or implied, No operational assessments have been made by DPA Auctions on this item, it has been photographed ONLY.



#93 - NH3 Nurse Tank (PZ9965, Unit 144)

NH3 Nurse Tank (PZ9965, Unit 144), 1000 gallon NH3 nurse tank, top front fill, 5th wheel gear, poly water tank, 11L-15 flotation tires, data plate. Notes: Item Location: Armington, IL 61721 Equipment Sold "AS IS, WHERE IS": All equipment/property is sold "AS IS, WHERE IS" with no warranty or guarantees, expressed or implied, No operational assessments have been made by DPA Auctions on this item, it has been photographed ONLY.



#94 - NH3 Nurse Tank (PZ9966, Unit 128)

NH3 Nurse Tank (PZ9966, Unit 128), 1000 gallon NH3 nurse tank, top front fill, 5th wheel gear, poly water tank, 12.5L-15 flotation tires, data plate. Notes: Item Location: Armington, IL 61721 Equipment Sold "AS IS, WHERE IS": All equipment/property is sold "AS IS, WHERE IS" with no warranty or guarantees, expressed or implied, No operational assessments have been made by DPA Auctions on this item, it has been photographed ONLY.



#95 - NH3 Nurse Tank (PZ9967, Unit 97)

NH3 Nurse Tank (PZ9967, Unit 97), 1000 gallon NH3 nurse tank, top front fill, 5th wheel gear, poly water tank, 11L-15 flotation tires. Notes: Item Location: Armington, IL 61721 Equipment Sold "AS IS, WHERE IS": All equipment/property is sold "AS IS, WHERE IS" with no warranty or guarantees, expressed or implied, No operational assessments have been made by DPA Auctions on this item, it has been photographed ONLY.



#96 - NH3 Nurse Tank (PZ9968, Unit 138)

NH3 Nurse Tank (PZ9968, Unit 138), 1000 gallon NH3 nurse tank, top front fill, 5th wheel gear, poly water tank, 11L-15 flotation tires, data plate. Notes: Item Location: Armington, IL 61721 Equipment Sold "AS IS, WHERE IS": All equipment/property is sold "AS IS, WHERE IS" with no warranty or guarantees, expressed or implied, No operational assessments have been made by DPA Auctions on this item, it has been photographed ONLY.



#97 - NH3 Nurse Tank (PZ9969, Unit 147)

NH3 Nurse Tank (PZ9969, Unit 147), 1000 gallon NH3 nurse tank, top front fill, 5th wheel gear, poly water tank, 11L-15 flotation tires, data plate. Notes: Item Location: Armington, IL 61721 Equipment Sold "AS IS, WHERE IS": All equipment/property is sold "AS IS, WHERE IS" with no warranty or guarantees, expressed or implied, No operational assessments have been made by DPA Auctions on this item, it has been photographed ONLY.



#98 - 1995 Ford New Holland 6640 Tractor (ED622)

1995 Ford New Holland 6640 Tractor (ED622), 540 PTO, 76 HP, 16X16 speed transmission, heat and A/C in cab, radio works, 3 point, Firestone 16.9/30 on rear with 90% tread, 2 sets of remotes, fuel gage is NOT currently working, shows 3091 hours. Notes: Fuel gage is not currently working. Item Location: Murray, IA 50174 Equipment Sold "AS IS, WHERE IS": All equipment/property is sold "AS IS, WHERE IS" with no warranty or guarantees, expressed or implied, No operational assessments have been made by DPA Auctions on this item, it has been photographed ONLY.



#99 - 1963 Farmall 460 Tractor (DL358)

1963 Farmall 460 Tractor (DL358), gas, TA works good, new points, plugs, condenser and distributor cap, w/ shredder. Notes: Item Location: Surprise, NE 68667 Equipment Sold "AS IS, WHERE IS": All equipment/property is sold "AS IS, WHERE IS" with no warranty or guarantees, expressed or implied, No operational assessments have been made by DPA Auctions on this item, it has been photographed ONLY.



#100 - 1953 Farmall Super M Tractor (DL359)

1953 Farmall Super M Tractor (DL359), brand new 15.5 x 38 tires on rear, 12 volt system, starts and runs perfect, live hydraulic. Notes: Item Location: Surprise, NE 68667 Equipment Sold "AS IS, WHERE IS": All equipment/property is sold "AS IS, WHERE IS" with no warranty or guarantees, expressed or implied, No operational assessments have been made by DPA Auctions on this item, it has been photographed ONLY.



#101 - 1993 Alum Line Livestock Trailer (AL496)

1993 Alum Line Livestock Trailer (AL496), 7x26, tandem axle, LT235/85R16 tires, two compartments, feeder pig trailers, gooseneck trailer, Model: LGN75626. Notes: Item Location: Postville, IA 52162 Equipment Sold "AS IS, WHERE IS": All equipment/property is sold "AS IS, WHERE IS" with no warranty or guarantees, expressed or implied, No operational assessments have been made by DPA Auctions on this item, it has been photographed ONLY.



#102 - 1993 Wilson Cattle Pot (PD918)

1993 Wilson Cattle Pot (PD918), 53 Foot, fixed triple axle, spring suspension, tires are 30-75%, brakes 50%, roll down nose, nose down, jail, dog house, all aluminum wheels, floors in good shape, wheels polished. Notes: Item Location: Hershey, NE 69143 Equipment Sold "AS IS, WHERE IS": All equipment/property is sold "AS IS, WHERE IS" with no warranty or guarantees, expressed or implied, No operational assessments have been made by DPA Auctions on this item, it has been photographed ONLY.



#103 - 2009 SDI Side Dump Trailer (KMK552)

2009 SDI Side Dump Trailer (KMK552), hydraulic side dump, 39' 8" frame, 35' tub, tandem axle, Hutch CH9700 spring ride suspension, Aero electric side to side tarp, GVWR 60,000 lbs., 11 R 22.5 tires. Notes: Fenders removed and placed in box for transport. Item Location: Amana, IA 52203 Equipment Sold "AS IS, WHERE IS": All equipment/property is sold "AS IS, WHERE IS" with no warranty or guarantees, expressed or implied, No operational assessments have been made by DPA Auctions on this item, it has been photographed ONLY.



#104 - 2009 Chevrolet Silverado 2500HD 4X4 (ED621)

2009 Chevrolet Silverado 2500HD 4X4 (ED621), Vortec 6.0 gas engine, automatic transmission, heat, A/C, AM/FM, CD player, 2500HD pickup, crew cab, 4X4, 265/75/16 tires in good condition at 75% tread, power windows and locks, power driver and passenger seat, new B&W flip over ball gooseneck hitch, rear bumper in fair condition included in bed of truck, missing tailgate and center console lid, shows 148,605 miles. Notes: Front push bar is included. Item Location: Lincoln, NE 68507 Equipment Sold "AS IS, WHERE IS": All equipment/property is sold "AS IS, WHERE IS" with no warranty or guarantees, expressed or implied, No operational assessments have been made by DPA Auctions on this item, it has been photographed ONLY.



#105 - 1966 Cadillac Fleetwood (DL359)

1966 Cadillac Fleetwood (DL359), automatic transmission, power front seat, power windows and locks, AM/FM radio, automatic climate control, shows 44,165 miles. Notes: All original. Item Location: Fremont, NE 68025 Equipment Sold "AS IS, WHERE IS": All equipment/property is sold "AS IS, WHERE IS" with no warranty or guarantees, expressed or implied, No operational assessments have been made by DPA Auctions on this item, it has been photographed ONLY.



#106 - NH3 Nurse Tank (PZ9970, Unit 123)

NH3 Nurse Tank (PZ9969, Unit 147), 1000 gallon NH3 nurse tank, top front fill, 5th wheel gear, poly water tank, 11L-15 flotation tires, data plate. Notes: Item Location: Armington, IL 61721 Equipment Sold "AS IS, WHERE IS": All equipment/property is sold "AS IS, WHERE IS" with no warranty or guarantees, expressed or implied, No operational assessments have been made by DPA Auctions on this item, it has been photographed ONLY.



#107 - NH3 Nurse Tank (PZ9971, Unit 136)

NH3 Nurse Tank (PZ9971, Unit 136), 1000 gallon NH3 nurse tank, top front fill, 5th wheel gear, poly water tank, 11L-15 flotation tires, data plate. Notes: Item Location: Armington, IL 61721 Equipment Sold "AS IS, WHERE IS": All equipment/property is sold "AS IS, WHERE IS" with no warranty or guarantees, expressed or implied, No operational assessments have been made by DPA Auctions on this item, it has been photographed ONLY.



#108 - NH3 Nurse Tank (PZ9972, Unit 108)

NH3 Nurse Tank (PZ9972, Unit 108), 1000 gallon NH3 nurse tank, top front fill, 5th wheel gear, poly water tank, 11L-15 flotation tires, data plate. Notes: Item Location: Armington, IL 61721 Equipment Sold "AS IS, WHERE IS": All equipment/property is sold "AS IS, WHERE IS" with no warranty or guarantees, expressed or implied, No operational assessments have been made by DPA Auctions on this item, it has been photographed ONLY.



#109 - NH3 Nurse Tank (PZ9973, Unit 103)

NH3 Nurse Tank (PZ9973, Unit 103), 1000 gallon NH3 nurse tank, top front fill, 5th wheel gear, poly water tank, 11L-15 flotation tires. Notes: Item Location: Armington, IL 61721 Equipment Sold "AS IS, WHERE IS": All equipment/property is sold "AS IS, WHERE IS" with no warranty or guarantees, expressed or implied, No operational assessments have been made by DPA Auctions on this item, it has been photographed ONLY.



#110 - NH3 Nurse Tank (PZ9974, Unit 158)

NH3 Nurse Tank (PZ9974, Unit 158), 1000 gallon NH3 nurse tank, top front fill, 5th wheel gear, poly water tank, 11L-15 flotation tires, data plate. Notes: Item Location: Armington, IL 61721 Equipment Sold "AS IS, WHERE IS": All equipment/property is sold "AS IS, WHERE IS" with no warranty or guarantees, expressed or implied, No operational assessments have been made by DPA Auctions on this item, it has been photographed ONLY.



#111 - NH3 Nurse Tank (PZ9975, Unit 156)

NH3 Nurse Tank (PZ9975, Unit 156), 1000 gallon NH3 nurse tank, top front fill, 5th wheel gear, poly water tank, 11L-15 flotation tires, data plate. Notes: Item Location: Armington, IL 61721 Equipment Sold "AS IS, WHERE IS": All equipment/property is sold "AS IS, WHERE IS" with no warranty or guarantees, expressed or implied, No operational assessments have been made by DPA Auctions on this item, it has been photographed ONLY.



#112 - NH3 Nurse Tank (PZ9976, Unit 120)

NH3 Nurse Tank (PZ9976, Unit 120), 1000 gallon NH3 nurse tank, top front fill, 5th wheel gear, poly water tank, 11L-15 flotation tires, data plate. Notes: Item Location: Armington, IL 61721 Equipment Sold "AS IS, WHERE IS": All equipment/property is sold "AS IS, WHERE IS" with no warranty or guarantees, expressed or implied, No operational assessments have been made by DPA Auctions on this item, it has been photographed ONLY.



#113 - NH3 Nurse Tank (PZ9977, Unit 111)

NH3 Nurse Tank (PZ9977, Unit 111), 1000 gallon NH3 nurse tank, top front fill, 5th wheel gear, poly water tank, 11L-15 flotation tires. Notes: Item Location: Armington, IL 61721 Equipment Sold "AS IS, WHERE IS": All equipment/property is sold "AS IS, WHERE IS" with no warranty or guarantees, expressed or implied, No operational assessments have been made by DPA Auctions on this item, it has been photographed ONLY.



#114 - Hardi Navigator Pull Type Sprayer (NP7111)

Hardi Navigator Pull Type Sprayer (NP7111), Model NP1100, 1,100 gallon poly liquid tank, 90' boom, 3-way nozzle bodies, Navigator flush & rinse system, pump, 12.4-42 tires, 10 bolt rim pattern, Hardi HC 3500 controller, Hardi Scanbox. Notes: Rubber seal is leaking, but valve is good. Item Location: Blackwell, OK 74631 Equipment Sold "AS IS, WHERE IS": All equipment/property is sold "AS IS, WHERE IS" with no warranty or guarantees, expressed or implied, No operational assessments have been made by DPA Auctions on this item, it has been photographed ONLY.



#115 - 2014 International Field Star 350 Dry Floater (NP7112)

2014 International Field Star 350 Dry Floater (NP7112), Model SA53700 7500 SFA 4X2, MaxxForce 10 350HP diesel engine, Allison 5 speed automatic On/Off Highway transmission, heat, air conditioning, Am/Fm radio, cruise, New Leader L4000G4-14 stainless steel dry spreader box (S/N 135787), New Leader MultiApplier insert, electric tarp, camera in each box, PTO, 1000/50R25 rear tires, 48x31.00-20 front tires, Raven Viper Pro, EZ-Guide 250, EZ-Steer, shows 21,252 miles, shows 1,586 hours. Notes: ONE OWNER MACHINE. Item Location: Hayward, MN 56043 Equipment Sold "AS IS, WHERE IS": All equipment/property is sold "AS IS, WHERE IS" with no warranty or guarantees, expressed or implied, No operational assessments have been made by DPA Auctions on this item, it has been photographed ONLY.



#117 - Layco Vertical Blender (PZ0052)

Layco Vertical Blender (PZ0052), Layco 10 ton stainless steel vertical blender, stainless steel hopper, approx. 30' stainless steel loadout conveyor. Notes: This Blender must be removed by December 31st, 2018 with NO exceptions. Dismantle, removal and transportation is at the expense, risk and liability of the buyer. Item Location: Malden, IL 61337 Equipment Sold "AS IS, WHERE IS": All equipment/property is sold "AS IS, WHERE IS" with no warranty or guarantees, expressed or implied, No operational assessments have been made by DPA Auctions on this item, it has been photographed ONLY.



#118 - Fertilizer Leg (PZ0053)

Fertilizer Leg (PZ0053), Approx. 45' stainless steel fertilizer leg, needs bearings. Notes: This leg must be removed by December 31st, 2018 with NO exceptions. Dismantle, removal and transportation is at the expense, risk and liability of the buyer. Item Location: Malden, IL 61337 Equipment Sold "AS IS, WHERE IS": All equipment/property is sold "AS IS, WHERE IS" with no warranty or guarantees, expressed or implied, No operational assessments have been made by DPA Auctions on this item, it has been photographed ONLY.



#119 - Layco Tripper (PZ0054)

Layco Tripper (PZ0054), Layco stainless steel tripper, approx. 80' stainless steel conveyor. Notes: This tripper must be removed by December 31st, 2018 with NO exceptions. Dismantle, removal and transportation is at the expense, risk and liability of the buyer. Item Location: Malden, IL 61337 Equipment Sold "AS IS, WHERE IS": All equipment/property is sold "AS IS, WHERE IS" with no warranty or guarantees, expressed or implied, No operational assessments have been made by DPA Auctions on this item, it has been photographed ONLY.



#120 - 2015 Sunflower 4610-7 Disc Ripper (PZ0056)

2015 Sunflower 4610-7 Disc Ripper (PZ0056), 2015 Sunflower 4610-7 disc ripper, 7 shnak non-folding disk ripper, 24" spacing, 2-bar coil tine harrow. Notes: Dealer Demo hardly used, Like New. Item Location: Tifton, GA 31793 Equipment Sold "AS IS, WHERE IS": All equipment/property is sold "AS IS, WHERE IS" with no warranty or guarantees, expressed or implied, No operational assessments have been made by DPA Auctions on this item, it has been photographed ONLY.



#121 - 2002 Cat 277B Turbo Skid Steer (PZ0051)

2002 Cat 277B Turbo Skid Steer (PZ0051), diesel engine, hydrostatic transmission, canopy, front door, air conditioning, heat, auxiliary hydraulics, lights, tracks, newer wheel motors, New bearings, bucket, shows 2900 hours. Notes: Hydro pump pressure tested great when wheel motor was changed. Item Location: Niles, MI 49120 Equipment Sold "AS IS, WHERE IS": All equipment/property is sold "AS IS, WHERE IS" with no warranty or guarantees, expressed or implied, No operational assessments have been made by DPA Auctions on this item, it has been photographed ONLY.



#123 - Willmar 500 Spreader (ED605)

Willmar 500 Spreader (ED605), 40 foot spreader, 540 PTO, 11L-15 tires, S/N: Unit 45. Notes: Item Location: Pierpont, SD 57468 Equipment Sold "AS IS, WHERE IS": All equipment/property is sold "AS IS, WHERE IS" with no warranty or guarantees, expressed or implied, No operational assessments have been made by DPA Auctions on this item, it has been photographed ONLY.



#124 - Willmar 500 Spreader (ED606)

Willmar 500 Spreader (ED606), 40 foot spreader, 540 PTO, 11L-15SL tires, S/N: Unit 46. Notes: Item Location: Pierpont, SD 57468 Equipment Sold "AS IS, WHERE IS": All equipment/property is sold "AS IS, WHERE IS" with no warranty or guarantees, expressed or implied, No operational assessments have been made by DPA Auctions on this item, it has been photographed ONLY.



#125 - Stainless Steel Hopper (ED608)

Stainless Steel Hopper (ED608), stainless steel with new roll tarp. Notes: Item Location: Pierpont, SD 57468 Equipment Sold "AS IS, WHERE IS": All equipment/property is sold "AS IS, WHERE IS" with no warranty or guarantees, expressed or implied, No operational assessments have been made by DPA Auctions on this item, it has been photographed ONLY.



#126 - 16 Ton Dry Fertilizer Tender Box (ED611)

16 Ton Dry Fertilizer Tender Box (ED611), Box is 409 stainless steel, auger tube is 304 stainless, 18 foot rear discharge auger, 40 degree side slope and 38 degree front and back slope, the box does have rust and normal wear and tear, running gear IS NOT included. Notes: Running gear DOES NOT sell with this unit. Item Location: Graymont, IL 61743 Equipment Sold "AS IS, WHERE IS": All equipment/property is sold "AS IS, WHERE IS" with no warranty or guarantees, expressed or implied, No operational assessments have been made by DPA Auctions on this item, it has been photographed ONLY.



#127 - 10x62 Arts Way Auger (AL471)

10x62 Arts Way Auger (AL471), 2010 galvanized swing hopper, purchased new, one owner, hydraulic lift, Model: SD205615. Notes: Item Location: Sumner, IA 50674 Equipment Sold "AS IS, WHERE IS": All equipment/property is sold "AS IS, WHERE IS" with no warranty or guarantees, expressed or implied, No operational assessments have been made by DPA Auctions on this item, it has been photographed ONLY.



#128 - 10x66 Arts Way Auger (AL472)

10x66 Arts Way Auger (AL472), purchased new, one owner, hydraulic lift, low use, Model: SD205891. Notes: Item Location: Sumner, IA 50674 Equipment Sold "AS IS, WHERE IS": All equipment/property is sold "AS IS, WHERE IS" with no warranty or guarantees, expressed or implied, No operational assessments have been made by DPA Auctions on this item, it has been photographed ONLY.



#129 - KSI Model 12UB Conveyor (KMK604)

KSI Model 12UB Conveyor (KMK604), approximately 60' length, 4 bin drops, Baldor 7.5 hp electric motor, Kahler automation system, Kahler Air Solenoid panel Assembly, Kahler KASPC control panel, Kahler FDS-RB8-4 control panel. Notes: This unit is palletized and ready for transport. Item Location: Le Mars, IA 51031 Equipment Sold "AS IS, WHERE IS": All equipment/property is sold "AS IS, WHERE IS" with no warranty or guarantees, expressed or implied, No operational assessments have been made by DPA Auctions on this item, it has been photographed ONLY.



#130 - Universal Leg DD-2000ED (ED604)

Universal Leg DD-2000ED (ED604), 3 horse power electric motor, 2000 BPH. Notes: Item Location: Doland, SD 57436 Equipment Sold "AS IS, WHERE IS": All equipment/property is sold "AS IS, WHERE IS" with no warranty or guarantees, expressed or implied, No operational assessments have been made by DPA Auctions on this item, it has been photographed ONLY.



#131 - Portable Seed Treater and Trailer (ED607)

Portable Seed Treater and Trailer (ED607), USC drum and controls, KSI 1208 32 foot conveyor, KSI 1208 17 foot conveyor, 26 foot Gooseneck trailer built for the treater. Notes: No Title. Item Location: Gwinner, ND 58040 Equipment Sold "AS IS, WHERE IS": All equipment/property is sold "AS IS, WHERE IS" with no warranty or guarantees, expressed or implied, No operational assessments have been made by DPA Auctions on this item, it has been photographed ONLY.



#132 - LP2000 Seed Treater (ED603)

LP2000 Seed Treater (ED603), USC drum and controls. Notes: Item Location: Doland, SD 57436 Equipment Sold "AS IS, WHERE IS": All equipment/property is sold "AS IS, WHERE IS" with no warranty or guarantees, expressed or implied, No operational assessments have been made by DPA Auctions on this item, it has been photographed ONLY.



#133 - 1993 International 9400 Fertilizer Tender (ED609)

1993 International 9400 Fertilizer Tender (ED609), 6 X 4 International, Cummins N14 motor, 10 speed transmission, Willmar load runner 16 ton box, unit has both heat and A/C, radio, tire size 295/75R22.5 with 90% tread, shows 714,103 miles. Notes: Item Location: Gwinner, ND 58040 Equipment Sold "AS IS, WHERE IS": All equipment/property is sold "AS IS, WHERE IS" with no warranty or guarantees, expressed or implied, No operational assessments have been made by DPA Auctions on this item, it has been photographed ONLY.



#136 - NH3 Nurse Tank (NP7126)

NH3 Nurse Tank (NP7126), 1,000 gallon capacity, top front fill, 4 wheel gear, NTIP Inspection No. 118137, 31x10.50R15 tires, data plate. Notes: Item Location: Galva, KS 67443 Equipment Sold "AS IS, WHERE IS": All equipment/property is sold "AS IS, WHERE IS" with no warranty or guarantees, expressed or implied, No operational assessments have been made by DPA Auctions on this item, it has been photographed ONLY.



#137 - NH3 Nurse Tank (NP7127)

NH3 Nurse Tank (NP7127), 1,000 gallon capacity, top front fill, 4 wheel gear, NTIP Inspection No. 118126, 31x10.50R15 tires, data plate. Notes: Item Location: Galva, KS 67443 Equipment Sold "AS IS, WHERE IS": All equipment/property is sold "AS IS, WHERE IS" with no warranty or guarantees, expressed or implied, No operational assessments have been made by DPA Auctions on this item, it has been photographed ONLY.



#138 - NH3 Nurse Tank (NP7128)

NH3 Nurse Tank (NP7128), 1,000 gallon capacity, top front fill, 4 wheel gear, NO NTIP Inspection tag, 31x10.50R15 tires, data plate. Notes: Item Location: Galva, KS 67443 Equipment Sold "AS IS, WHERE IS": All equipment/property is sold "AS IS, WHERE IS" with no warranty or guarantees, expressed or implied, No operational assessments have been made by DPA Auctions on this item, it has been photographed ONLY.



#139 - Anhydrous Storage Tank (NP7129)

Anhydrous Storage Tank (NP7129), 1968 Trinity Industries, Inc. 18,000 gallon capacity, tank volume gauge, OS DIA 105.5, SHELL THK .750, HEAD THK .420, LENGTH 533, data plate, S/N 9255. Notes: TANK ONLY. This item must be dismantled and removed by November 15, 2018, NO EXCEPTIONS. Dismantle, removal and transportation is at the expense, risk and liability of the buyer. Item Location: McPherson, KS 67460 Equipment Sold "AS IS, WHERE IS": All equipment/property is sold "AS IS, WHERE IS" with no warranty or guarantees, expressed or implied, No operational assessments have been made by DPA Auctions on this item, it has been photographed ONLY.



#140 - Liquid Nurse Caddy (NP7121, Unit 12657)

Liquid Nurse Caddy (NP7121, Unit 12657), poly cone bottom liquid tank, squeeze pump, 18.4-26 tires, PSI gauge, 2 port rear hydraulics, Tank 07. Notes: Item Location: Galva, KS 67443 Equipment Sold "AS IS, WHERE IS": All equipment/property is sold "AS IS, WHERE IS" with no warranty or guarantees, expressed or implied, No operational assessments have been made by DPA Auctions on this item, it has been photographed ONLY.



#141 - Liquid Nurse Caddy (NP7122, Unit 12659)

Liquid Nurse Caddy (NP7122, Unit 12659), poly cone bottom liquid tank, NO squeeze pump, 18.4-26 tires, PSI gauge, 2 port rear hydraulics, Tank 10. Notes: Item Location: Galva, KS 67443 Equipment Sold "AS IS, WHERE IS": All equipment/property is sold "AS IS, WHERE IS" with no warranty or guarantees, expressed or implied, No operational assessments have been made by DPA Auctions on this item, it has been photographed ONLY.



#142 - Liquid Nurse Caddy (NP7123, Unit 12667)

Liquid Nurse Caddy (NP7123, Unit 12667), poly cone bottom liquid tank, UDOR squeeze pump, 18.4-26 tires, PSI gauge, 2 port rear hydraulics, Tank 11. Notes: Item Location: Galva, KS 67443 Equipment Sold "AS IS, WHERE IS": All equipment/property is sold "AS IS, WHERE IS" with no warranty or guarantees, expressed or implied, No operational assessments have been made by DPA Auctions on this item, it has been photographed ONLY.



#143 - Liquid Nurse Caddy (NP7124, Unit 12660)

Liquid Nurse Caddy (NP7124, Unit 12660), poly cone bottom liquid tank, squeeze pump, 18.4-26 tires, PSI gauge, 2 port rear hydraulics, Tank 05. Notes: Item Location: Galva, KS 67443 Equipment Sold "AS IS, WHERE IS": All equipment/property is sold "AS IS, WHERE IS" with no warranty or guarantees, expressed or implied, No operational assessments have been made by DPA Auctions on this item, it has been photographed ONLY.



#144 - NH3 Nurse Tank (NP7113, Unit 73096)

NH3 Nurse Tank (NP7113, Unit 73096), 1,000 gallon capacity, extreme front fill, Pryor style gear, water tank, NTIP Inspection No. 118153, 31x10.5R15 tires, Tank L106, data plate. Notes: Item Location: Lyons, KS 67554 Equipment Sold "AS IS, WHERE IS": All equipment/property is sold "AS IS, WHERE IS" with no warranty or guarantees, expressed or implied, No operational assessments have been made by DPA Auctions on this item, it has been photographed ONLY.



#145 - NH3 Nurse Tank (NP7114)

NH3 Nurse Tank (NP7114), 1,000 gallon capacity, extreme front fill, Pryor style gear, water tank, NTIP Inspection No. 118158, 11L-15 rear tires, 31x10.5R15 front tires, Tank L110, data plate. Notes: Item Location: Lyons, KS 67554 Equipment Sold "AS IS, WHERE IS": All equipment/property is sold "AS IS, WHERE IS" with no warranty or guarantees, expressed or implied, No operational assessments have been made by DPA Auctions on this item, it has been photographed ONLY.



#146 - 2005 John Deere 4920 Spreader (NP7115, Unit 23583)

2005 John Deere 4920 Spreader (NP7115, Unit 23583), John Deere diesel engine (S/N RG6081H255571), hydrostatic transmission, heat, air conditioning, Am/Fm radio, New Leader L3030G4-11 stainless steel dry spreader box (S/N 133199), dual spinners, Shurco electric tarp w/ side mounted wireless controls, Firestone 380/105R50 tires, StarFire iTC globe, PYLE PLCM7700 cab cam, John Deere brown box controller, GreenStar GS2, shows 1,045 hours (seller believes there to be approx. 11,000 total hours on this machine). Notes: Seller believes there to be approx. 11,000 total hours on this machine, contact seller for more details. Item Location: Leoti, KS 67861 Equipment Sold "AS IS, WHERE IS": All equipment/property is sold "AS IS, WHERE IS" with no warranty or guarantees, expressed or implied, No operational assessments have been made by DPA Auctions on this item, it has been photographed ONLY.



#147 - Allis Chalmers Forklift (NP7120)

Allis Chalmers Forklift (NP7120), Model ACP40, LP gas, shuttle shift, tilt, 4,000lb capacity, forks, 6.5-10 rear tires, 29x8-15 front tires. Notes: Item Location: Niota, IL 62358 Equipment Sold "AS IS, WHERE IS": All equipment/property is sold "AS IS, WHERE IS" with no warranty or guarantees, expressed or implied, No operational assessments have been made by DPA Auctions on this item, it has been photographed ONLY.



#148 - Willmar Eagle 8600 (DR9961)

Willmar Eagle 8600 (DR9961), diesel engine, hydrostatic drive, 800 gallon poly liquid system, 120' boom, 3 way nozzle bodies, Raven controller, Tee-jet GPS swathing, cab heat/air conditioning, AM/FM cassette radio, 380/85R46 row crop tires, shows 2592 hours. Notes: Item Location: Gully, MN 56646 Equipment Sold "AS IS, WHERE IS": All equipment/property is sold "AS IS, WHERE IS" with no warranty or guarantees, expressed or implied, No operational assessments have been made by DPA Auctions on this item, it has been photographed ONLY.



#149 - Ag-Gator 1004 (DR9965)

Ag-Gator 1004 (DR9965), Cummins diesel engine, 10 speed transmission, articulating steer, 4X4, 8 ton Simonsen hydraulic dry spinner box, 18" web chain, dual rear spinners, Dickey-john controller, 67X34.00-25 tires, shows 7649 hours. Notes: Was mainly used for seeding rice. Item Location: Gully, MN 56646 Equipment Sold "AS IS, WHERE IS": All equipment/property is sold "AS IS, WHERE IS" with no warranty or guarantees, expressed or implied, No operational assessments have been made by DPA Auctions on this item, it has been photographed ONLY.



#150 - Nh3 Nurse Tank (DR9963)

Nh3 Nurse Tank (DR9963), 1000 gallon top front fill Nh3 nurse tank, 5th wheel running gear, NO TONGUE, data tag, rear hitch, 12.5L-15 tires. Notes: Item Location: Gully, MN 56646 Equipment Sold "AS IS, WHERE IS": All equipment/property is sold "AS IS, WHERE IS" with no warranty or guarantees, expressed or implied, No operational assessments have been made by DPA Auctions on this item, it has been photographed ONLY.



#151 - Nh3 Nurse Tank (DR9971 Unit 17)

Nh3 Nurse Tank (DR9971 Unit 17), 1000 gallon top front fill Nh3 nurse tank, 5th wheel running gear, NO data tag, rear hitch, 12.5L-15 tires. Notes: Item Location: Gully, MN 56646 Equipment Sold "AS IS, WHERE IS": All equipment/property is sold "AS IS, WHERE IS" with no warranty or guarantees, expressed or implied, No operational assessments have been made by DPA Auctions on this item, it has been photographed ONLY.



#152 - Nh3 Nurse Tank (DR9972 Unit 2)

Nh3 Nurse Tank (DR9972 Unit 2), 1000 gallon top front fill Nh3 nurse tank, 5th wheel running gear, NO data tag, rear hitch, 12.5L-15 tires. Notes: Item Location: Gully, MN 56646 Equipment Sold "AS IS, WHERE IS": All equipment/property is sold "AS IS, WHERE IS" with no warranty or guarantees, expressed or implied, No operational assessments have been made by DPA Auctions on this item, it has been photographed ONLY.



#153 - Nh3 Nurse Tank (DR9974)

Nh3 Nurse Tank (DR9974), 1000 gallon top front fill Nh3 nurse tank, 5th wheel running gear, data tag, rear hitch, 12.5L-15 tires. Notes: Item Location: Gully, MN 56646 Equipment Sold "AS IS, WHERE IS": All equipment/property is sold "AS IS, WHERE IS" with no warranty or guarantees, expressed or implied, No operational assessments have been made by DPA Auctions on this item, it has been photographed ONLY.



#154 - Nh3 Nurse Tank (DR9975 Unit 26)

Nh3 Nurse Tank (DR9975 Unit 26), 1000 gallon top front fill Nh3 nurse tank, 5th wheel running gear, data tag, rear hitch, 13.50/85R16 tires. Notes: Item Location: Gully, MN 56646 Equipment Sold "AS IS, WHERE IS": All equipment/property is sold "AS IS, WHERE IS" with no warranty or guarantees, expressed or implied, No operational assessments have been made by DPA Auctions on this item, it has been photographed ONLY.



#155 - Nh3 Nurse Tank (DR9976 Unit 24)

Nh3 Nurse Tank (DR9976 Unit 24), 1000 gallon top front fill Nh3 nurse tank, 5th wheel running gear, data tag, rear hitch, 12.5L-15 tires. Notes: Item Location: Gully, MN 56646 Equipment Sold "AS IS, WHERE IS": All equipment/property is sold "AS IS, WHERE IS" with no warranty or guarantees, expressed or implied, No operational assessments have been made by DPA Auctions on this item, it has been photographed ONLY.



#156 - 2002 Loral 4000 (DR9969)

2002 Loral 4000 (DR9969), Cummins diesel engine, Allison automatic transmission, Air Max 1000 dry air flow box, 70' stainless steel boom, foam markers, stainless steel foam tank, Mid Tech TASC 6100 controller, roll tarp, AM/FM radio, cab heat/ air conditioning, cruise control, 48X25.00-20 front tires, 66X43.00-25 rear tires, shows 44,941 miles. Notes: Item Location: Gully, MN 56646 Equipment Sold "AS IS, WHERE IS": All equipment/property is sold "AS IS, WHERE IS" with no warranty or guarantees, expressed or implied, No operational assessments have been made by DPA Auctions on this item, it has been photographed ONLY.



#157 - Willmar 800 Spreader (DR9978)

Willmar 800 Spreader (DR9978), 8 ton stainless steel dry spreader, roll tarp, ground drive web chain, PTO drive dual spinners, tandem axle, 21.5-16.1 tires. Notes: Item Location: Gully, MN 56646 Equipment Sold "AS IS, WHERE IS": All equipment/property is sold "AS IS, WHERE IS" with no warranty or guarantees, expressed or implied, No operational assessments have been made by DPA Auctions on this item, it has been photographed ONLY.



#158 - Willmar 500 Spreader (DR9984 Unit 3)

Willmar 500 Spreader (DR9984 Unit 3), 5 ton stainless steel dry spreader, roll tarp, ground drive web chain, PTO drive dual spinners, tandem axle, 12.5L-15 tires. Notes: Item Location: Gully, MN 56646 Equipment Sold "AS IS, WHERE IS": All equipment/property is sold "AS IS, WHERE IS" with no warranty or guarantees, expressed or implied, No operational assessments have been made by DPA Auctions on this item, it has been photographed ONLY.



#159 - Harvest International Auger (DR9980)

Harvest International Auger (DR9980), model H1392, 13" X 92' portable grain auger, hydraulic drive dual auger swing hopper. Notes: This is a wrinkle in the tube, flighting is not bent. Will need bottom tube section replaced. Item Location: Gully, MN 56646 Equipment Sold "AS IS, WHERE IS": All equipment/property is sold "AS IS, WHERE IS" with no warranty or guarantees, expressed or implied, No operational assessments have been made by DPA Auctions on this item, it has been photographed ONLY.



#160 - Brandt 5175 Conveyor (DR9981)

Brandt 5175 Conveyor (DR9981), portable belt conveyor, electric drive motor, cleated belt. Notes: Bottom hopper section is RUSTED THROUGH see pictures. Item Location: Gully, MN 56646 Equipment Sold "AS IS, WHERE IS": All equipment/property is sold "AS IS, WHERE IS" with no warranty or guarantees, expressed or implied, No operational assessments have been made by DPA Auctions on this item, it has been photographed ONLY.



#161 - Brandt 5175 Conveyor (DR9982)

Brandt 5175 Conveyor (DR9982), portable belt conveyor, electric drive motor, cleated belt. Notes: This conveyor HAS NO LIFT cylinder. Item Location: Gully, MN 56646 Equipment Sold "AS IS, WHERE IS": All equipment/property is sold "AS IS, WHERE IS" with no warranty or guarantees, expressed or implied, No operational assessments have been made by DPA Auctions on this item, it has been photographed ONLY.



#162 - Willmar Wrangler 4550 (DR9966)

Willmar Wrangler 4550 (DR9966), diesel engine, hydrostatic drive, 4X4, quick tach front bucket, 30.5X112.5-16 tires, shows 6288 hours. Notes: They do have ALL cab glass and door. Item Location: Gully, MN 56646 Equipment Sold "AS IS, WHERE IS": All equipment/property is sold "AS IS, WHERE IS" with no warranty or guarantees, expressed or implied, No operational assessments have been made by DPA Auctions on this item, it has been photographed ONLY.



#163 - (4) Alliance Flotation Tires/Rims (NP7116)

(4) Alliance Flotation Tires/Rims (NP7116), Model Agri-Star, size 710/70R42, 12 bolt rim pattern, with (4) fenders. Notes: Item Location: Leoti, KS 67861 Equipment Sold "AS IS, WHERE IS": All equipment/property is sold "AS IS, WHERE IS" with no warranty or guarantees, expressed or implied, No operational assessments have been made by DPA Auctions on this item, it has been photographed ONLY.



#164 - 2003 Mack CX613 Truck (NP7131)

2003 Mack CX613 Truck (NP7131), Mack E7-400 diesel engine (75,000 miles on platinum overhaul w/ paperwork), Eaton Fuller 9 speed transmission, 36" sleeper, heat, air conditioning, Am/Fm CD radio, cruise, power mirrors, Elite leather driver's seat, air ride cab, tandem axle, air ride suspension, Jake Brake, stainless steel visor, stationary 5th wheel plate, 3-line wet kit, all aluminum wheels, shows 949,179 miles. Notes: 75,000 miles on Platinum Overhaul w/ paperwork. Contact Seller for more details. Item Location: Farmington, IL 61531 Equipment Sold "AS IS, WHERE IS": All equipment/property is sold "AS IS, WHERE IS" with no warranty or guarantees, expressed or implied, No operational assessments have been made by DPA Auctions on this item, it has been photographed ONLY.



#165 - (2) Goodyear Row Crop Tires (DL350)

(2) Goodyear Row Crop Tires (DL350), 380/85R46 row crop tires and rims from 2005 International full float sprayer. Notes: Item Location: Greenview, IL 62642 Equipment Sold "AS IS, WHERE IS": All equipment/property is sold "AS IS, WHERE IS" with no warranty or guarantees, expressed or implied, No operational assessments have been made by DPA Auctions on this item, it has been photographed ONLY.



#166 - 1999 Utility 53' Reefer Trailer (KMK2132)

1999 Utility 53' Reefer Trailer (KMK2132), VS2R, 53' x 102" reefer trailer, GVWR 65,000 lbs., sliding tandem axle, Intraax k-2 slider, air ride suspension, insulated rear cargo doors, Carrier Phoenix Ultra, ultra fresh 2, 295 / 75 R 22.5 tires, spare tire rack with spare tire, unit #53353, shows 19,131 hours. Notes: Complete maintenance and service records are available upon request. Item Location: Council Bluffs, IA 51501 Equipment Sold "AS IS, WHERE IS": All equipment/property is sold "AS IS, WHERE IS" with no warranty or guarantees, expressed or implied, No operational assessments have been made by DPA Auctions on this item, it has been photographed ONLY.



#167 - 2001 Great Dane 53' Reefer Trailer (KMK2133)

2001 Great Dane 53' Reefer Trailer (KMK2133), Super Seal, 53' x 102" reefer trailer, 13' 6" clearance, GVWR 68,000 lbs., sliding tandem axle, air ride suspension, insulated rear cargo doors, Thermo King SB-III SR+, Ingersoll-Rand smart reefer, 275 / 80 R 22.5 tires, spare tire rack with spare tire, unit #53350, shows 17,348 hours. Notes: Complete maintenance and service records are available upon request. Item Location: Council Bluffs, IA 51501 Equipment Sold "AS IS, WHERE IS": All equipment/property is sold "AS IS, WHERE IS" with no warranty or guarantees, expressed or implied, No operational assessments have been made by DPA Auctions on this item, it has been photographed ONLY.



#168 - 2002 Utility 53' Reefer Trailer (KMK2134)

2002 Utility 53' Reefer Trailer (KMK2134), 3000 R, VS2R, 53' x 102" reefer trailer, GVWR 65,000 lbs., sliding tandem axle, air ride suspension, insulated rear cargo doors, Carrier Transicold, Stealth, 275 / 80 R 22.5 tires, spare tire rack with spare tire, unit #53380, shows 14,664 hours. Notes: Complete maintenance and service records are available upon request. Item Location: Council Bluffs, IA 51501 Equipment Sold "AS IS, WHERE IS": All equipment/property is sold "AS IS, WHERE IS" with no warranty or guarantees, expressed or implied, No operational assessments have been made by DPA Auctions on this item, it has been photographed ONLY.



#169 - 2013 Chevrolet Silverado 1500 4x4 (TH322, Unit 76341)

2013 Chevrolet Silverado 1500 4x4 (TH322, Unit 76341), Vortec 5.3L V8 302hp 305ft. lbs., 4-speed automatic transmission, in-dash AM/FM MP3 radio, power windows and locks, shows 157,385 miles. Notes: PLEASE ALLOW AT LEAST 60 DAYS FOR TITLE TRANSFER Item Location: Hallock, MN 56728 Equipment Sold "AS IS, WHERE IS": All equipment/property is sold "AS IS, WHERE IS" with no warranty or guarantees, expressed or implied, No operational assessments have been made by DPA Auctions on this item, it has been photographed ONLY.



#170 - 2011 GMC Sierra 1500 SLE 4x4 (TH321, Unit 24378)

2011 GMC Sierra 1500 SLE 4x4 (TH321, Unit 24378), Vortec 5.3L V8 403hp 417ft. Lbs., 6-Speed Automatic transmission, AM/FM CD radio, cruise control, power windows and locks, shows 204,617 miles. Notes: PLEASE ALLOW AT LEAST 60 DAYS FOR TITLE TRANSFER Item Location: Hallock, MN 56728 Equipment Sold "AS IS, WHERE IS": All equipment/property is sold "AS IS, WHERE IS" with no warranty or guarantees, expressed or implied, No operational assessments have been made by DPA Auctions on this item, it has been photographed ONLY.



#171 - 2004 Terra Gator 8103 (DR9970)

2004 Terra Gator 8103 (DR9970), John Deere diesel engine, Terra Shift transmission, Air Max 1000 dry air flow box, 70' stainless steel boom, Falcon II controller, Raven SmartTrax, foam marker, electric roll tarp, AM/FM cassette radio, cab heat/air conditioning, 1000/50R25 tires, shows 57,722 miles, 4680 hours. Notes: Item Location: Gully, MN 56646 Equipment Sold "AS IS, WHERE IS": All equipment/property is sold "AS IS, WHERE IS" with no warranty or guarantees, expressed or implied, No operational assessments have been made by DPA Auctions on this item, it has been photographed ONLY.



#172 - Ag-Gator 1004 (DR9977)

Ag-Gator 1004 (DR9977), Cummins diesel engine, 10 speed transmission, articulating steer, 4X4, 8 ton Simonsen hydraulic stainless steel dry spinner box, 18" web chain, dual rear spinners, Dickey-john controller, Center line swathing, 67X34.00-25 tires, shows 56,464 miles. Notes: Item Location: Gully, MN 56646 Equipment Sold "AS IS, WHERE IS": All equipment/property is sold "AS IS, WHERE IS" with no warranty or guarantees, expressed or implied, No operational assessments have been made by DPA Auctions on this item, it has been photographed ONLY.



#173 - 1995 Terra Gator (DR9983)

1995 Terra Gator (DR9983), Cat diesel engine, 10 speed transmission, Air Max VI dry air spreader box, 70' stainless steel boom, flip tarp, Mid Tech TASC 6500 controller, Am/FM radio, cab heat/air conditioning, 66X43.00-25 tires, shows 5556 hours, 56,111 miles. Notes: Item Location: Gully, MN 56646 Equipment Sold "AS IS, WHERE IS": All equipment/property is sold "AS IS, WHERE IS" with no warranty or guarantees, expressed or implied, No operational assessments have been made by DPA Auctions on this item, it has been photographed ONLY.



#174 - Bobcat 773 (DR9979)

Bobcat 773 (DR9979), Kubota diesel engine, hydrostatic drive, 5.5' quick tach front bucket, OROPS, auxiliary hydraulic outlets, shows 4014 hours. Notes: Item Location: Gully, MN 56646 Equipment Sold "AS IS, WHERE IS": All equipment/property is sold "AS IS, WHERE IS" with no warranty or guarantees, expressed or implied, No operational assessments have been made by DPA Auctions on this item, it has been photographed ONLY.



#175 - Bobcat Snow Blower (DR9964)

Bobcat Snow Blower (DR9964), model 1812 quick tach single stage snow blower, hydraulic spout. Notes: Item Location: Gully, MN 56646 Equipment Sold "AS IS, WHERE IS": All equipment/property is sold "AS IS, WHERE IS" with no warranty or guarantees, expressed or implied, No operational assessments have been made by DPA Auctions on this item, it has been photographed ONLY.



#176 - John Deere 4840 (DR9962)

John Deere 4840 (DR9962), diesel engine, power shift transmission, dual hydraulic outlets, rear PTO, wide front, AM/FM radio, cab heat/air conditioning, inside axle weights, 14L-16.1 front tires, 520/85R38 rear tires & duals, shows 1125 hours. Notes: Item Location: Gully, MN 56646 Equipment Sold "AS IS, WHERE IS": All equipment/property is sold "AS IS, WHERE IS" with no warranty or guarantees, expressed or implied, No operational assessments have been made by DPA Auctions on this item, it has been photographed ONLY.



#177 - 1983 International 9370 (DR9968)

1983 International 9370 (DR9968), Detroit diesel engine, 15 speed transmission, tandem axle full screw, air ride suspension, Simonsen 4816 hydraulic stainless steel dry tender box, rear auger, roll tarp, air conditioning. Notes: Item Location: Gully, MN 56646 Equipment Sold "AS IS, WHERE IS": All equipment/property is sold "AS IS, WHERE IS" with no warranty or guarantees, expressed or implied, No operational assessments have been made by DPA Auctions on this item, it has been photographed ONLY.



#178 - 2004 Dodge Ram 1500 (DR9973)

2004 Dodge Ram 1500 (DR9973), gas engine, Spectre intake, automatic transmission, 4X4, regular cab, tonneau cover, spray bed liner, rear receiver hitch, AM/FM CD radio, air conditioning, cruise control, 245/70R17 tires, shows 182,414 miles. Notes: Item Location: Gully, MN 56646 Equipment Sold "AS IS, WHERE IS": All equipment/property is sold "AS IS, WHERE IS" with no warranty or guarantees, expressed or implied, No operational assessments have been made by DPA Auctions on this item, it has been photographed ONLY.



#179 - Rhino Bushcat Mower Attachment (DR0169)

Rhino Bushcat Mower Attachment (DR0169), Model SM60, 60" cutting width, skid steer attachment, hydraulic. Notes: Item Location: Gully, MN 56646 Equipment Sold "AS IS, WHERE IS": All equipment/property is sold "AS IS, WHERE IS" with no warranty or guarantees, expressed or implied, No operational assessments have been made by DPA Auctions on this item, it has been photographed ONLY.



#180 - Butler Grain Bin (DR0170)

Butler Grain Bin (DR0170), approx. 18' diameter x 17' sidewalls, no outside ladder but ladder on the inside. Notes: This item must be dismantled and removed by October 20, 2018, NO EXCEPTIONS. If not removed by this date the bin will be scrapped. Dismantle, removal and transportation is at the expense, risk and liability of the buyer. Item Location: Gully, MN 56646 Equipment Sold "AS IS, WHERE IS": All equipment/property is sold "AS IS, WHERE IS" with no warranty or guarantees, expressed or implied, No operational assessments have been made by DPA Auctions on this item, it has been photographed ONLY.



#181 - Butler Grain Bin (DR0171)

Butler Grain Bin (DR0171), approx. 18' diameter x 17' sidewalls, no outside ladder but ladder on the inside. Notes: This item must be dismantled and removed by October 20, 2018, NO EXCEPTIONS. If not removed by this date the bin will be scrapped. Dismantle, removal and transportation is at the expense, risk and liability of the buyer. Item Location: Gully, MN 56646 Equipment Sold "AS IS, WHERE IS": All equipment/property is sold "AS IS, WHERE IS" with no warranty or guarantees, expressed or implied, No operational assessments have been made by DPA Auctions on this item, it has been photographed ONLY.



#182 - Rem Grain Vac (PZ0203)

Rem Grain Vac (PZ0203), Rem model 2500 grain vac, straight & flex pipe, portable, ST205/75R15 tires, shows 560 hours. Notes: Item Location: Gully, MN 56646 Equipment Sold "AS IS, WHERE IS": All equipment/property is sold "AS IS, WHERE IS" with no warranty or guarantees, expressed or implied, No operational assessments have been made by DPA Auctions on this item, it has been photographed ONLY.



#183 - 2005 Terra Gator 8104 (DR0052)

2005 Terra Gator 8104 (DR0052), John Deere diesel engine, Terra Shift transmission, Air Max Precision 2 dry air flow system, 70' stainless steel boom, Raven Viper Pro controller, foam markers, stainless steel foam tank, electric roll tarp, AM/FM cassette radio, cab heat/air conditioning, 48X31.00-20 front tires, shows 3820 hours, 43,045 miles, 1000/50R32 rear tires. Notes: Item Location: Slater, IA 50244 Equipment Sold "AS IS, WHERE IS": All equipment/property is sold "AS IS, WHERE IS" with no warranty or guarantees, expressed or implied, No operational assessments have been made by DPA Auctions on this item, it has been photographed ONLY.



#184 - 30,000 Gallon Steel Tank (ED615)

30,000 Gallon Steel Tank (ED615), approximately 30 years old, used for diesel storage, converted to water storage 3 years ago, no leaks, has a brass float installed in top of tank. Notes: Item Location: Mansfield, IL 61854 Equipment Sold "AS IS, WHERE IS": All equipment/property is sold "AS IS, WHERE IS" with no warranty or guarantees, expressed or implied, No operational assessments have been made by DPA Auctions on this item, it has been photographed ONLY.



#185 - 1994 Mid State 1500 Gallon Stainless Steel Tank (ED616)

1994 Mid State 1500 Gallon Stainless Steel Tank (ED616), great condition, no leaks, tank has been steam cleaned. Notes: Item Location: Mansfield, IL 61854 Equipment Sold "AS IS, WHERE IS": All equipment/property is sold "AS IS, WHERE IS" with no warranty or guarantees, expressed or implied, No operational assessments have been made by DPA Auctions on this item, it has been photographed ONLY.



#186 - (8) 2X2 Pumps with Motors (ED617)

(8) 2X2 Pumps with Motors (ED617), 3 Banjo pumps with 5HP 3 phase electric motors, 2 Banjo pumps with 3HP 3 phase electric motors, 2 MP pumps with 5HP 3 phase electric motors, 1 Scot pump with 5HP 3 phase electric motor, all pumps were operational prior to being removed. Notes: Item Location: Mansfield, IL 61854 Equipment Sold "AS IS, WHERE IS": All equipment/property is sold "AS IS, WHERE IS" with no warranty or guarantees, expressed or implied, No operational assessments have been made by DPA Auctions on this item, it has been photographed ONLY.



#187 - 3X3 Banjo Pump with Electric Motor (ED618)

3X3 Banjo Pump with Electric Motor (ED618), 10HP, 3 phase electric motor, was strictly water pump. Notes: Item Location: Mansfield, IL 61854 Equipment Sold "AS IS, WHERE IS": All equipment/property is sold "AS IS, WHERE IS" with no warranty or guarantees, expressed or implied, No operational assessments have been made by DPA Auctions on this item, it has been photographed ONLY.



#188 - 1993 Junge Weigh Tank (ED619)

1993 Junge Weigh Tank (ED619), approximately 150 gallon. Notes: Item Location: Mansfield, IL 61854 Equipment Sold "AS IS, WHERE IS": All equipment/property is sold "AS IS, WHERE IS" with no warranty or guarantees, expressed or implied, No operational assessments have been made by DPA Auctions on this item, it has been photographed ONLY.



#189 - 1994 Hyster 110XL Forklift (MH296)

1994 Hyster 110XL Forklift (MH296), 4.3 liter Chevy gasoline engine, 187" 3 stage mast, 48" polish and tapered forks, manual transmission, solid foam filled tires, shows 566 hours. Notes: Item Location: Kearney, MO 64060 Equipment Sold "AS IS, WHERE IS": All equipment/property is sold "AS IS, WHERE IS" with no warranty or guarantees, expressed or implied, No operational assessments have been made by DPA Auctions on this item, it has been photographed ONLY.



#190 - 2014 Polaris RZR XP 1000 (NP7134)

2014 Polaris RZR XP 1000 (NP7134), gas engine, automatic transmission w/ Lo/Hi, side-by-side, font windshield, grill guard, shows 2,579 miles. Notes: Item Location: Farmington, IL 61531 Equipment Sold "AS IS, WHERE IS": All equipment/property is sold "AS IS, WHERE IS" with no warranty or guarantees, expressed or implied, No operational assessments have been made by DPA Auctions on this item, it has been photographed ONLY.



#191 - NH3 Nurse Tank (PZ9987, Unit 10085)

NH3 Nurse Tank (PZ9987, Unit 10085), Trinity 1000 gallon NH3 tank, top front fill, 5th wheel gear, 11L-15 flotation tires, data plate. Notes: Item Location: Bayard, IA 50029 Equipment Sold "AS IS, WHERE IS": All equipment/property is sold "AS IS, WHERE IS" with no warranty or guarantees, expressed or implied, No operational assessments have been made by DPA Auctions on this item, it has been photographed ONLY.



#192 - NH3 Nurse Tank (PZ9988, Unit 10135)

NH3 Nurse Tank (PZ9988, Unit 10135), Trinity 1000 gallon NH3 tank, top front fill, 5th wheel gear, 11L-15 flotation tires, data plate. Notes: Item Location: Bayard, IA 50029 Equipment Sold "AS IS, WHERE IS": All equipment/property is sold "AS IS, WHERE IS" with no warranty or guarantees, expressed or implied, No operational assessments have been made by DPA Auctions on this item, it has been photographed ONLY.



#193 - NH3 Nurse Tank (PZ9989, Unit 10141)

NH3 Nurse Tank (PZ9989, Unit 10141), Trinity 1000 gallon NH3 tank, top front fill, 5th wheel gear, 11L-15 flotation tires, data plate. Notes: Item Location: Bayard, IA 50029 Equipment Sold "AS IS, WHERE IS": All equipment/property is sold "AS IS, WHERE IS" with no warranty or guarantees, expressed or implied, No operational assessments have been made by DPA Auctions on this item, it has been photographed ONLY.



#194 - NH3 Nurse Tank (PZ9990, Unit 10139)

NH3 Nurse Tank (PZ9990, Unit 10139), Trinity 1000 gallon NH3 tank, top front fill, 5th wheel gear, 11L-15 flotation tires, data plate. Notes: Item Location: Bayard, IA 50029 Equipment Sold "AS IS, WHERE IS": All equipment/property is sold "AS IS, WHERE IS" with no warranty or guarantees, expressed or implied, No operational assessments have been made by DPA Auctions on this item, it has been photographed ONLY.



#195 - NH3 Nurse Tank (PZ9991, Unit 10151)

NH3 Nurse Tank (PZ9991, Unit 10151), Trinity 1000 gallon NH3 tank, top front fill, 5th wheel gear, 11L-15 flotation tires, data plate. Notes: Item Location: Bayard, IA 50029 Equipment Sold "AS IS, WHERE IS": All equipment/property is sold "AS IS, WHERE IS" with no warranty or guarantees, expressed or implied, No operational assessments have been made by DPA Auctions on this item, it has been photographed ONLY.



#196 - NH3 Nurse Tank (PZ9993, Unit 10142)

NH3 Nurse Tank (PZ9993, Unit 10142), Trinity 1000 gallon NH3 tank, top front fill, 5th wheel gear, 12.5L-15 flotation tires, data plate. Notes: Item Location: Bayard, IA 50029 Equipment Sold "AS IS, WHERE IS": All equipment/property is sold "AS IS, WHERE IS" with no warranty or guarantees, expressed or implied, No operational assessments have been made by DPA Auctions on this item, it has been photographed ONLY.



#197 - NH3 Nurse Tank (PZ9994, Unit 10159)

NH3 Nurse Tank (PZ9994, Unit 10159), Trinity 1000 gallon NH3 tank, top front fill, 5th wheel gear, 12.5L-15 flotation tires, data plate. Notes: Item Location: Bayard, IA 50029 Equipment Sold "AS IS, WHERE IS": All equipment/property is sold "AS IS, WHERE IS" with no warranty or guarantees, expressed or implied, No operational assessments have been made by DPA Auctions on this item, it has been photographed ONLY.



#198 - NH3 Nurse Tank (PZ9995, Unit 10107)

NH3 Nurse Tank (PZ9995, Unit 10107), Trinity 1000 gallon NH3 tank, top front fill, 5th wheel gear, 12.5L-15 flotation tires, data plate. Notes: Item Location: Bayard, IA 50029 Equipment Sold "AS IS, WHERE IS": All equipment/property is sold "AS IS, WHERE IS" with no warranty or guarantees, expressed or implied, No operational assessments have been made by DPA Auctions on this item, it has been photographed ONLY.



#199 - Dry Tender Trailer (DR0067 Unit 8637)

Dry Tender Trailer (DR0067 Unit 8637), Willmar Load Runner 10 ton stainless steel hydraulic tender box, self contained hydraulics, Honda gas engine shows 155 hours, rear auger, roll over tarp, Duo Lift gooseneck hitch trailer, tandem dual wheeled axles. Notes: Item Location: Roanoke, IL 61561 Equipment Sold "AS IS, WHERE IS": All equipment/property is sold "AS IS, WHERE IS" with no warranty or guarantees, expressed or implied, No operational assessments have been made by DPA Auctions on this item, it has been photographed ONLY.



#200 - Layco Conditioner (DR0066 Unit 8862)

Layco Conditioner (DR0066 Unit 8862), complete fertilizer/lime conditioner, Layco hopper, Layco conditioner 75hp electric motor, Layco stainless steel under car unloader w/electric motor. Notes: Item Location: Roanoke, IL 61561 Equipment Sold "AS IS, WHERE IS": All equipment/property is sold "AS IS, WHERE IS" with no warranty or guarantees, expressed or implied, No operational assessments have been made by DPA Auctions on this item, it has been photographed ONLY.



#201 - Clipper Cleaner (DR0065)

Clipper Cleaner (DR0065), model GS42, includes several screens, was used in 2018. Notes: Item Location: Tecumseh, MI 49286 Equipment Sold "AS IS, WHERE IS": All equipment/property is sold "AS IS, WHERE IS" with no warranty or guarantees, expressed or implied, No operational assessments have been made by DPA Auctions on this item, it has been photographed ONLY.



#202 - DMI 730 Ripper (DR9743)

DMI 730 Ripper (DR9743), eco-tiger model 7 shank ripper, smooth coulters, extra coulters. Notes: Only 200 acres on new shoes. Item Location: Kilkenney, MN 56052 Equipment Sold "AS IS, WHERE IS": All equipment/property is sold "AS IS, WHERE IS" with no warranty or guarantees, expressed or implied, No operational assessments have been made by DPA Auctions on this item, it has been photographed ONLY.



#203 - 1997 Stoughton Trailer (NP1295)

1997 Stoughton Trailer (NP1295), 53' dry van trailer, tandem axle, rear cargo doors, light panel roof, 22.5 tires. Notes: Tight roof, good brakes, used on road 2018. Item Location: Kilkenney, MN 56052 Equipment Sold "AS IS, WHERE IS": All equipment/property is sold "AS IS, WHERE IS" with no warranty or guarantees, expressed or implied, No operational assessments have been made by DPA Auctions on this item, it has been photographed ONLY.



#204 - 1957 Chevy (DR0060)

1957 Chevy (DR0060), Chevy Bel Air, 4 door, 283 gas engine, 4 speed transmission. Great start for an awesome project. NO WINDSHIELD, NOT RUNNING. Notes: Last time it ran was 4-5 years ago and parked. Has not run since. Seller has most of the parts, but not sure has ALL trim pieces, he has NO WINDSHIELD, clean title. Item Location: Davenport, NE 68335 Equipment Sold "AS IS, WHERE IS": All equipment/property is sold "AS IS, WHERE IS" with no warranty or guarantees, expressed or implied, No operational assessments have been made by DPA Auctions on this item, it has been photographed ONLY.



#205 - 1949 GMC Pickup (DR0061)

1949 GMC Pickup (DR0061), 235 gas engine, 4 speed transmission, ALL is ORIGINAL. He does have the side glass windows they are just removed. Another great starter project. Notes: This truck was running a few years ago. It was parked here and not run since. Item Location: Davenport, NE 68335 Equipment Sold "AS IS, WHERE IS": All equipment/property is sold "AS IS, WHERE IS" with no warranty or guarantees, expressed or implied, No operational assessments have been made by DPA Auctions on this item, it has been photographed ONLY.



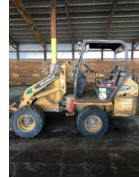
#206 - 1950 GMC Pickup (DR0064)

1950 GMC Pickup (DR0064), 235 gas engine, 4 speed transmission, ALL is ORIGINAL. Another great starter project. Notes: This truck was running a few years ago. It was parked here and not run since. Item Location: Davenport, NE 68335 Equipment Sold "AS IS, WHERE IS": All equipment/property is sold "AS IS, WHERE IS" with no warranty or guarantees, expressed or implied, No operational assessments have been made by DPA Auctions on this item, it has been photographed ONLY.



#207 - 2007 Willmar Wrangler 4550 Loader (NP7119)

2007 Willmar Wrangler 4550 Loader (NP7119), turbo diesel engine, hydrostatic transmission, ROPS, bucket, 31x15.5x15 tires, shows 3,551 hours. Notes: Starter is not engaging, ran fine up to starter issue. Contact seller for more details. Item Location: Gladstone, IL 61437 Equipment Sold "AS IS, WHERE IS": All equipment/property is sold "AS IS, WHERE IS" with no warranty or guarantees, expressed or implied, No operational assessments have been made by DPA Auctions on this item, it has been photographed ONLY.



#208 - 1 Load Out Flow Meter Assembly (ED620)

1 Load Out Flow Meter Assembly (ED620), 3 each 3 inch air actuated valves, 2 each 3 inch stainless screen assy, 2 each 3 inch manual valves, all 100% operational when removed in mid July. Notes: Item Location: Mansfield, IL 61854 Equipment Sold "AS IS, WHERE IS": All equipment/property is sold "AS IS, WHERE IS" with no warranty or guarantees, expressed or implied, No operational assessments have been made by DPA Auctions on this item, it has been photographed ONLY.



#209 - NH3 Nurse Tank (PZ9996, Unit 10156)

NH3 Nurse Tank (PZ9996, Unit 10156), Trinity 1000 gallon NH3 tank, top front fill, 5th wheel gear, 12.5L-15 flotation tires, data plate. Notes: Item Location: Bayard, IA 50029 Equipment Sold "AS IS, WHERE IS": All equipment/property is sold "AS IS, WHERE IS" with no warranty or guarantees, expressed or implied, No operational assessments have been made by DPA Auctions on this item, it has been photographed ONLY.



#210 - NH3 Nurse Tank (PZ9997, Unit 10149)

NH3 Nurse Tank (PZ9997, Unit 10149), Trinity 1000 gallon NH3 tank, top front fill, 5th wheel gear, 11L-15 flotation tires, data plate. Notes: Item Location: Bayard, IA 50029 Equipment Sold "AS IS, WHERE IS": All equipment/property is sold "AS IS, WHERE IS" with no warranty or guarantees, expressed or implied, No operational assessments have been made by DPA Auctions on this item, it has been photographed ONLY.



#211 - NH3 Nurse Tank (PZ9999, Unit 10078)

NH3 Nurse Tank (PZ9999, Unit 10078), Trinity 1000 gallon NH3 tank, top front fill, 5th wheel gear, 12.5L-15 flotation tires, data plate. Notes: Item Location: Bayard, IA 50029 Equipment Sold "AS IS, WHERE IS": All equipment/property is sold "AS IS, WHERE IS" with no warranty or guarantees, expressed or implied, No operational assessments have been made by DPA Auctions on this item, it has been photographed ONLY.



#212 - NH3 Nurse Tank (PZ0001, Unit 10143)

NH3 Nurse Tank (PZ0001, Unit 10143), Trinity 1000 gallon NH3 tank, top front fill, 5th wheel gear, 11L-15 flotation tires, data plate. Notes: Item Location: Bayard, IA 50029 Equipment Sold "AS IS, WHERE IS": All equipment/property is sold "AS IS, WHERE IS" with no warranty or guarantees, expressed or implied, No operational assessments have been made by DPA Auctions on this item, it has been photographed ONLY.



#213 - NH3 Nurse Tank (PZ0002, Unit 10138)

NH3 Nurse Tank (PZ0002, Unit 10138), Trinity 1000 gallon NH3 tank, top front fill, 5th wheel gear, 12.5L-15 flotation tires, data plate. Notes: Item Location: Bayard, IA 50029 Equipment Sold "AS IS, WHERE IS": All equipment/property is sold "AS IS, WHERE IS" with no warranty or guarantees, expressed or implied, No operational assessments have been made by DPA Auctions on this item, it has been photographed ONLY.



#214 - NH3 Nurse Tank (PZ0003, Unit 10150)

NH3 Nurse Tank (PZ0003, Unit 10150), Trinity 1000 gallon NH3 tank, top front fill, 5th wheel gear, 12.5L-15 flotation tires, data plate. Notes: Item Location: Bayard, IA 50029 Equipment Sold "AS IS, WHERE IS": All equipment/property is sold "AS IS, WHERE IS" with no warranty or guarantees, expressed or implied, No operational assessments have been made by DPA Auctions on this item, it has been photographed ONLY.



#215 - NH3 Nurse Tank (PZ0004, Unit 10155)

NH3 Nurse Tank (PZ0004, Unit 10155), Trinity 1000 gallon NH3 tank, top front fill, 5th wheel gear, 12.5L-15 flotation tires, data plate. Notes: Item Location: Bayard, IA 50029 Equipment Sold "AS IS, WHERE IS": All equipment/property is sold "AS IS, WHERE IS" with no warranty or guarantees, expressed or implied, No operational assessments have been made by DPA Auctions on this item, it has been photographed ONLY.



#216 - NH3 Nurse Tank (PZ0005, Unit 10153)

NH3 Nurse Tank (PZ0005, Unit 10153), Trinity 1000 gallon NH3 tank, top front fill, 5th wheel gear, 12.5L-15 flotation tires, data plate. Notes: Item Location: Bayard, IA 50029 Equipment Sold "AS IS, WHERE IS": All equipment/property is sold "AS IS, WHERE IS" with no warranty or guarantees, expressed or implied, No operational assessments have been made by DPA Auctions on this item, it has been photographed ONLY.



#217 - 2001 Gold Dog Mack Truck (NP7133)

2001 Gold Dog Mack Truck (NP7133), Model CH613, Mack E7 460 diesel engine, 18 speed transmission, heat, air conditioning, Am/Fm radio, cruise, 40" flat top sleeper, tandem axle, Mack rears, air slide 5th wheel, 3-line wet kit, dual 6" chrome stacks, stainless steel rear fenders, dual aluminum fuel tanks, dual aluminum air tanks, stainless steel visor, 11R22.5 tires, all 10 aluminum wheels, shows 767,144 miles. Notes: Cracked passenger front windshield. **Please allow at least 30 days for title transfer. Item Location: Lincoln, MO 65338 Equipment Sold "AS IS, WHERE IS": All equipment/property is sold "AS IS, WHERE IS" with no warranty or guarantees, expressed or implied, No operational assessments have been made by DPA Auctions on this item, it has been photographed ONLY.



#218 - 2008 Terra Gator 9203 Dry Floater (PZ0057, Unit T50)

2008 Terra Gator 9203 Dry Floater (PZ0057, Unit T50), Cat C13 diesel engine, Powershift transmission, air conditioning, heat, Am/Fm CD stereo, Soilection Airmax 2000 dry air flow system, 70' stainless steel boom, foam marker, stainless steel foam marker tank, electric roll over tarp, Alliance 1050/50R32 front tires, Michelin 1050/50R32 rear tires, Raven SmarTrax, Raven GPS, shows 4594 hours. Notes: Item Location: Twin Brooks, SD 57269 Equipment Sold "AS IS, WHERE IS": All equipment/property is sold "AS IS, WHERE IS" with no warranty or guarantees, expressed or implied, No operational assessments have been made by DPA Auctions on this item, it has been photographed ONLY.



#219 - Fuel Tank (PZ0059)

Fuel Tank (PZ0059), 500 gallon fuel tank, Gasboy pump. Notes: Item Location: Twin Brooks, SD 57269 Equipment Sold "AS IS, WHERE IS": All equipment/property is sold "AS IS, WHERE IS" with no warranty or guarantees, expressed or implied, No operational assessments have been made by DPA Auctions on this item, it has been photographed ONLY.



#220 - 2007 Felling Trailer (PZ0058, Unit T75)

2007 Felling Trailer (PZ0058, Unit T75), 2007 Felling rail tender trailer, 10' top deck, approx 35' main deck, tandem axle, spring suspension, 255/70R22.5 tires, trailer has a twist in it. Notes: Trailer has a twist in it. Item Location: Twin Brooks, SD 57269 Equipment Sold "AS IS, WHERE IS": All equipment/property is sold "AS IS, WHERE IS" with no warranty or guarantees, expressed or implied, No operational assessments have been made by DPA Auctions on this item, it has been photographed ONLY.



#221 - 2008 Terra Gator 9203 Dry Floater (PZ0063, Unit T47)

2008 Terra Gator 9203 Dry Floater (PZ0063, Unit T47), Cat C13 diesel engine, Powershift transmission, air conditioning, heat, Am/Fm radio, Airmax 1000 dry air flow system, 70' stainless steel boom, foam marker, stainless steel foam marker tank, electric roll over tarp, Alliance 1050/50R32 tires, Raven SmarTrax, Raven GPS, Raven monitor, shows 3974 hours. Notes: Crack in glass. Item Location: Appleton, MN 56208 Equipment Sold "AS IS, WHERE IS": All equipment/property is sold "AS IS, WHERE IS" with no warranty or guarantees, expressed or implied, No operational assessments have been made by DPA Auctions on this item, it has been photographed ONLY.



#222 - 2013 Cat 950K High Lift Payloader (PZ0062, Unit 609)

2013 Cat 950K High Lift Payloader (PZ0062, Unit 609), Cat diesel engine, Autoshift transmission, air conditioning, heat, Am/Fm CD stereo, cab, lights, cab camera, beacon light, high lift, hydraulic hood lift, New 9.5' bucket, Michelin XHA2 23.5R25 tires, shows 4602 hours. Notes: Item Location: Appleton, MN 56208 Equipment Sold "AS IS, WHERE IS": All equipment/property is sold "AS IS, WHERE IS" with no warranty or guarantees, expressed or implied, No operational assessments have been made by DPA Auctions on this item, it has been photographed ONLY.



#223 - 2003 IHC 9200i Truck (PZ0060, Unit 259)

2003 IHC 9200i Truck (PZ0060, Unit 259), Cummins N14 Plus diesel engine, 10 speed transmission, air conditioning, heat, Am/Fm CD stereo, cruise control, engine brake, sleeper, tandem axle, full screw, air ride suspension, 5th wheel, 295/75R22.5 tires, aluminum rims, some metal filings in oil, shows 1,109,949 miles. Notes: Truck had metal filings in oil. Please contact seller for more information. Item Location: Appleton, MN 56208 Equipment Sold "AS IS, WHERE IS": All equipment/property is sold "AS IS, WHERE IS" with no warranty or guarantees, expressed or implied, No operational assessments have been made by DPA Auctions on this item, it has been photographed ONLY.



#224 - 1992 IHC 9400 Dry Tender Truck (PZ0061, Unit 117)

1992 IHC 9400 Dry Tender Truck (PZ0061, Unit 117), Cummins diesel engine, 9 speed transmission, air conditioning, heat, Am/Fm cassette radio, cruise control, engine brake, tandem axle, full screw, air ride suspension, 16 ton dry tender box, side discharge auger, all hydraulic, roll over tarp, 285/75R24.5 tires, shows 1,005,133 miles. Notes: Radiator leaks. Item Location: Appleton, MN 56208 Equipment Sold "AS IS, WHERE IS": All equipment/property is sold "AS IS, WHERE IS" with no warranty or guarantees, expressed or implied, No operational assessments have been made by DPA Auctions on this item, it has been photographed ONLY.



#225 - 1999 KBH Dry Tender Box (PZ0038, Unit 72)

1999 KBH Dry Tender Box (PZ0038, Unit 72), 24 ton capacity, approx. 40HP Duetz motor, hydraulic tank, trailer DOES NOT SELL. Notes: Trailer frame DOES NOT SELL with this lot, it will be the TENDER BOX ONLY. Item Location: Sandoval, IL 62882 Equipment Sold "AS IS, WHERE IS": All equipment/property is sold "AS IS, WHERE IS" with no warranty or guarantees, expressed or implied, No operational assessments have been made by DPA Auctions on this item, it has been photographed ONLY.



#226 - 1983 Willmar Dry Tender Box (PZ0039, Unit 125)

1983 Willmar Dry Tender Box (PZ0039, Unit 125), 16 ton capacity, approx. 40HP International motor, hydraulic tank, trailer DOES NOT SELL. Notes: Trailer frame DOES NOT SELL with this lot, it will be the TENDER BOX ONLY. Item Location: Vandalia, IL 62471 Equipment Sold "AS IS, WHERE IS": All equipment/property is sold "AS IS, WHERE IS" with no warranty or guarantees, expressed or implied, No operational assessments have been made by DPA Auctions on this item, it has been photographed ONLY.



#227 - NH3 Nurse Tank (PZ0006, Unit 10140)

NH3 Nurse Tank (PZ0006, Unit 10140), 1000 gallon NH3 tank, top front fill, 5th wheel gear, 11L-15 flotation tires, data plate. Notes: Item Location: Bayard, IA 50029 Equipment Sold "AS IS, WHERE IS": All equipment/property is sold "AS IS, WHERE IS" with no warranty or guarantees, expressed or implied, No operational assessments have been made by DPA Auctions on this item, it has been photographed ONLY.



#228 - NH3 Nurse Tank (PZ0007, Unit 10145)

NH3 Nurse Tank (PZ0007, Unit 10145), Trinity 1000 gallon NH3 tank, top front fill, 5th wheel gear, 12.5L-15 flotation tires, data plate. Notes: Item Location: Bayard, IA 50029 Equipment Sold "AS IS, WHERE IS": All equipment/property is sold "AS IS, WHERE IS" with no warranty or guarantees, expressed or implied, No operational assessments have been made by DPA Auctions on this item, it has been photographed ONLY.



#229 - NH3 Nurse Tank (PZ0014, Unit 21542)

NH3 Nurse Tank (PZ0014, Unit 21542), Delta 1000 gallon NH3 tank, center fill, 5th wheel gear, 12.5L-15 flotation tires, data plate. Notes: Item Location: Early, IA 50535 Equipment Sold "AS IS, WHERE IS": All equipment/property is sold "AS IS, WHERE IS" with no warranty or guarantees, expressed or implied, No operational assessments have been made by DPA Auctions on this item, it has been photographed ONLY.



#230 - NH3 Nurse Tank (PZ0015, Unit 12772)

NH3 Nurse Tank (PZ0015, Unit 12772), 1000 gallon NH3 tank, top front fill, 5th wheel gear, 11L-15 flotation tires, data plate. Notes: Taken out of service. Item Location: Early, IA 50535 Equipment Sold "AS IS, WHERE IS": All equipment/property is sold "AS IS, WHERE IS" with no warranty or guarantees, expressed or implied, No operational assessments have been made by DPA Auctions on this item, it has been photographed ONLY.



#231 - NH3 Nurse Tank (PZ0016, Unit 16756)

NH3 Nurse Tank (PZ0016, Unit 16756), Haltom 1000 gallon NH3 tank, top front fill, 5th wheel gear, 12.5L-15 flotation tires, data plate. Notes: Taken out of service. Item Location: Early, IA 50535 Equipment Sold "AS IS, WHERE IS": All equipment/property is sold "AS IS, WHERE IS" with no warranty or guarantees, expressed or implied, No operational assessments have been made by DPA Auctions on this item, it has been photographed ONLY.



#232 - Willmar 1600 Dry Tender Box (PZ0042, Unit 70)

Willmar 1600 Dry Tender Box (PZ0042, Unit 70), 16 ton capacity, rear discharge auger, 2004 Specialty Constructed trailer, tandem axle, NO Motor. Notes: Frame is from a 1987 Ford Truck, S/N 1FDYA90SW4HV67557. Item Location: Toledo, IL 62468 Equipment Sold "AS IS, WHERE IS": All equipment/property is sold "AS IS, WHERE IS" with no warranty or guarantees, expressed or implied, No operational assessments have been made by DPA Auctions on this item, it has been photographed ONLY.



#233 - 2008 Ntech GreenSeeker Sensor Bar (PZ0043)

2008 Ntech GreenSeeker Sensor Bar (PZ0043), Model RT200, w/ hand held. Notes: Item Location: Effingham, IL 62401 Equipment Sold "AS IS, WHERE IS": All equipment/property is sold "AS IS, WHERE IS" with no warranty or guarantees, expressed or implied, No operational assessments have been made by DPA Auctions on this item, it has been photographed ONLY.



#234 - 2000 Freightliner FL80 Dry Tender Truck (PZ0040, Unit 560)

2000 Freightliner FL80 Dry Tender Truck (PZ0040, Unit 560), Cat 3126 diesel engine, Eaton Fuller 9 speed transmission, tandem axle, air ride suspension, Adams 16 ton dry tender box, rear discharge auger, manual tarp, PTO, shows 322,374 miles. Notes: Item Location: Greenville, IL 62246 Equipment Sold "AS IS, WHERE IS": All equipment/property is sold "AS IS, WHERE IS" with no warranty or guarantees, expressed or implied, No operational assessments have been made by DPA Auctions on this item, it has been photographed ONLY.



#235 - 2000 Ford F-350 Service Truck (PZ0041, Unit 526)

2000 Ford F-350 Service Truck (PZ0041, Unit 526), 7.3L diesel engine, manual transmission, heat, air conditioning, Am/Fm radio, 8 door service body, dually, shows 282,933 miles. Notes: This truck is an F-350, it just has a F-550 badge on the side. Item Location: Effingham, IL 62401 Equipment Sold "AS IS, WHERE IS": All equipment/property is sold "AS IS, WHERE IS" with no warranty or guarantees, expressed or implied, No operational assessments have been made by DPA Auctions on this item, it has been photographed ONLY.



#236 - 2010 New Leader Dry Spreader Box (PZ0101)

2010 New Leader Dry Spreader Box (PZ0101), 2010 New Leader L3220 G4-11 stainless steel dry spreader box, twin spinner, S/N 130208 with New Leader L3220 G4 MultApplier - 5 stainless steel insert. Notes: Came off John Deere 4930, New belt last year. Running gear NOT included. Item Location: Oneida, IL 61467 Equipment Sold "AS IS, WHERE IS": All equipment/property is sold "AS IS, WHERE IS" with no warranty or guarantees, expressed or implied, No operational assessments have been made by DPA Auctions on this item, it has been photographed ONLY.



#237 - John Deere Cultivator (PZ0113)

John Deere Cultivator (PZ0113), John Deere model ER014 cultivator. Notes: Item Location: Tremont, IL 61568 Equipment Sold "AS IS, WHERE IS": All equipment/property is sold "AS IS, WHERE IS" with no warranty or guarantees, expressed or implied, No operational assessments have been made by DPA Auctions on this item, it has been photographed ONLY.



#238 - IHC 863 Corn Head (PZ0110)

IHC 863 Corn Head (PZ0110), IHC 863 6 row corn head. Notes: Item Location: Tremont, IL 61568 Equipment Sold "AS IS, WHERE IS": All equipment/property is sold "AS IS, WHERE IS" with no warranty or guarantees, expressed or implied, No operational assessments have been made by DPA Auctions on this item, it has been photographed ONLY.



#239 - Case 1020 bean Platform (PZ0111)

Case 1020 bean Platform (PZ0111), Case 1020 - 20' bean platform. Notes: Item Location: Tremont, IL 61568 Equipment Sold "AS IS, WHERE IS": All equipment/property is sold "AS IS, WHERE IS" with no warranty or guarantees, expressed or implied, No operational assessments have been made by DPA Auctions on this item, it has been photographed ONLY.



#240 - Brent 882 Grain Cart (PZ0102)

Brent 882 Grain Cart (PZ0102), Brent 882 grain cart, single axle, hydraulic spout, light kit, bar tires, rear view camera, scale, 30.5L-32 tires. Notes: Only used 2 years on 800 acres, bought new and stored inside. Item Location: Bernard, IA 52032 Equipment Sold "AS IS, WHERE IS": All equipment/property is sold "AS IS, WHERE IS" with no warranty or guarantees, expressed or implied, No operational assessments have been made by DPA Auctions on this item, it has been photographed ONLY.



#241 - DMI Nutri - Placr Liquid Applicator (PZ0099)

DMI Nutri - Placr Liquid Applicator (PZ0099), DMI Nutri-Placr 1000 liquid applicator, 11 coulter, 1000 gallon poly liquid tank, ground driven pump, hydraulic wings, flotation tires. Notes: Item Location: Creston, IA 50801 Equipment Sold "AS IS, WHERE IS": All equipment/property is sold "AS IS, WHERE IS" with no warranty or guarantees, expressed or implied, No operational assessments have been made by DPA Auctions on this item, it has been photographed ONLY.



#242 - Killbros Gravity Wagon (PZ0017, Unit 16818)

Killbros Gravity Wagon (PZ0017, Unit 16818), Killbros 350 gravity wagon, Heider auto steer running gear, 11L-15 flotation tires. Notes: Item Location: Early, IA 50535 Equipment Sold "AS IS, WHERE IS": All equipment/property is sold "AS IS, WHERE IS" with no warranty or guarantees, expressed or implied, No operational assessments have been made by DPA Auctions on this item, it has been photographed ONLY.



#243 - Bradford Gravity Wagon (PZ0018, Unit 16820)

Bradford Gravity Wagon (PZ0018, Unit 16820), Bradford model 225 gravity wagon, auto steer running gear, 11L-15 flotation tires. Notes: Item Location: Early, IA 50535 Equipment Sold "AS IS, WHERE IS": All equipment/property is sold "AS IS, WHERE IS" with no warranty or guarantees, expressed or implied, No operational assessments have been made by DPA Auctions on this item, it has been photographed ONLY.



#244 - DMI 2800 Liquid Applicator (PZ0012, Unit 16687)

DMI 2800 Liquid Applicator (PZ0012, Unit 16687), DMI 2800 11 coulter liquid applicator 850 gallon poly liquid tank, Hypro pump, hydraulic wings, 14L-16.1 flotation tires. Notes: Item Location: Early, IA 50535 Equipment Sold "AS IS, WHERE IS": All equipment/property is sold "AS IS, WHERE IS" with no warranty or guarantees, expressed or implied, No operational assessments have been made by DPA Auctions on this item, it has been photographed ONLY.



#245 - DMI 2800 Liquid Applicator (PZ0013, Unit 17492)

DMI 2800 Liquid Applicator (PZ0013, Unit 17492), DMI 2800 - 16 15 coulter injection liquid applicator, 1400 gallon poly liquid tank, Hypro pump, hydraulic wings, Good Year Ultratorque 420/80R46 tires. Notes: Item Location: Early, IA 50535 Equipment Sold "AS IS, WHERE IS": All equipment/property is sold "AS IS, WHERE IS" with no warranty or guarantees, expressed or implied, No operational assessments have been made by DPA Auctions on this item, it has been photographed ONLY.



#246 - DMI 4300 Tool Bar (PZ9873, Unit C)

DMI 4300 Tool Bar (PZ9873, Unit C), DMI 4300 15 knife pull type tool bar, coutlers, double disc sealers, Raven Super cooler, hydraulic wings, 12.5L-15 flotation tires, rear hitch, Raven monitor. Notes: Item Location: Odebolt, IA 51458 Equipment Sold "AS IS, WHERE IS": All equipment/property is sold "AS IS, WHERE IS" with no warranty or guarantees, expressed or implied, No operational assessments have been made by DPA Auctions on this item, it has been photographed ONLY.



#247 - DMI 4300 Tool Bar (PZ9874, Unit Q)

DMI 4300 Tool Bar (PZ9874, Unit Q), DMI 4300 15 knife pull type tool bar, coutlers, double disc sealers, Raven Super cooler, hydraulic wings, 100 gallon poly liquid tank, pump, 12.5L-15 flotation tires, rear hitch, Raven monitor. Notes: Item Location: Odebolt, IA 51458 Equipment Sold "AS IS, WHERE IS": All equipment/property is sold "AS IS, WHERE IS" with no warranty or guarantees, expressed or implied, No operational assessments have been made by DPA Auctions on this item, it has been photographed ONLY.



#248 - DMI 4300 Tool Bar (PZ9875, Unit U)

DMI 4300 Tool Bar (PZ9875, Unit U), DMI 4300 15 knife pull type tool bar, coutlers, double disc sealers, Raven Super cooler, Dempster ground driven pump, hydraulic wings, 12.5L-15 flotation tires, rear hitch. Notes: Item Location: Odebolt, IA 51458 Equipment Sold "AS IS, WHERE IS": All equipment/property is sold "AS IS, WHERE IS" with no warranty or guarantees, expressed or implied, No operational assessments have been made by DPA Auctions on this item, it has been photographed ONLY.



#249 - DMI 4300 Tool Bar (PZ9876, Unit X)

DMI 4300 Tool Bar (PZ9876, Unit X), DMI 4300 15 knife pull type tool bar, coutlers, double disc sealers, Raven Super cooler, hydraulic wings, 12.5L-15 flotation tires, rear hitch, Raven monitor. Notes: Item Location: Odebolt, IA 51458 Equipment Sold "AS IS, WHERE IS": All equipment/property is sold "AS IS, WHERE IS" with no warranty or guarantees, expressed or implied, No operational assessments have been made by DPA Auctions on this item, it has been photographed ONLY.



#249A - 2009 Sanpan 2200 Limited (CG545)

2009 Sanpan 2200 Limited (CG545), Yamaha 40 hp 4 stroke, Electric Bimini top, Galley, ski tow bar, raised helm, Lowrance fish finder/depth finder, subwoofer, reclining seats with footrest, 215.7 hours. Notes: No trailer, new trailer can be purchased. Financing available to qualified buyers. Item Location: Valley, NE 68064 Equipment Sold "AS IS, WHERE IS": All equipment/property is sold "AS IS, WHERE IS" with no warranty or guarantees, expressed or implied, No operational assessments have been made by DPA Auctions on this item, it has been photographed ONLY.



#250 - GEHL 5640E Skid Steer (DJR010)

GEHL 5640E Skid Steer (DJR010), Deutz turbo diesel 82HP engine, 2 speed transmission, heated cab, AM/FM radio, 73" bucket width, auto quick tach, spare tire, one set of tire chains, teeth attachment for bucket, 12x16.5 tires. Notes: Equipment listed from Roger Fries estate. Personal inspections are welcome by appointment. Load out is by appointment also. Item Location: Cuba City, WI 53807 Equipment Sold "AS IS, WHERE IS": All equipment/property is sold "AS IS, WHERE IS" with no warranty or guarantees, expressed or implied, No operational assessments have been made by DPA Auctions on this item, it has been photographed ONLY.



#251 - Ford 1910 MFWD Tractor (DJR011)

Ford 1910 MFWD Tractor (DJR011), 3cyl diesel, 540 pto, CAT 1 3pt hitch, MFWD lights work, 4 speed with shuttle shift, 27x8.50x 15 front, 18.4x 16.1 rear. Notes: Equipment listed from Roger Fries estate. Personal inspections are welcome by appointment. Load out is by appointment also. Item Location: Cuba City, WI 53807 Equipment Sold "AS IS, WHERE IS": All equipment/property is sold "AS IS, WHERE IS" with no warranty or guarantees, expressed or implied, No operational assessments have been made by DPA Auctions on this item, it has been photographed ONLY.



#252 - Truck Topper (DJR019)

Truck Topper (DJR019), fiberglass construction, silver color, see pics for dimensions. Notes: Equipment listed from Roger Fries estate. Personal inspections are welcome by appointment. Load out is by appointment also. Item Location: Cuba City, WI 53807 Equipment Sold "AS IS, WHERE IS": All equipment/property is sold "AS IS, WHERE IS" with no warranty or guarantees, expressed or implied, No operational assessments have been made by DPA Auctions on this item, it has been photographed ONLY.



#253 - 1998 John Deere 9610 Combine (PD919)

1998 John Deere 9610 Combine (PD919), Maximizer, level land, Mauer bin extensions, double chop spreader, tire size 18.4 x 42 fronts and 14.9 x 24 rears, dual wheels included, John Deere Yield Monitor, automatic header height, reverser, 1000 PTO shafts, 3 speed hydrostat, 20 foot unload auger, shows 4327 engine hours, shows 3107 separator hours, John Deere inspection and repairs every 300-400 hours. Notes: Item Location: Esbon, KS 66941 Equipment Sold "AS IS, WHERE IS": All equipment/property is sold "AS IS, WHERE IS" with no warranty or guarantees, expressed or implied, No operational assessments have been made by DPA Auctions on this item, it has been photographed ONLY.



#254 - 25 Foot Doyle Fertilizer Conveyor (ED632)

25 Foot Doyle Fertilizer Conveyor (ED632), 18 inch belt, 7.5 horse power motor, unit has been sitting for 5 years. Notes: Item Location: Blairstown, IA 52209 Equipment Sold "AS IS, WHERE IS": All equipment/property is sold "AS IS, WHERE IS" with no warranty or guarantees, expressed or implied, No operational assessments have been made by DPA Auctions on this item, it has been photographed ONLY.



#255 - DMI (DR0005)

DMI (DR0005), 11 knife 3 point mount tool bar, transport gear, Continental flow meter, has extra flow meter included. Notes: Item Location: Bloomer, WI 54724 Equipment Sold "AS IS, WHERE IS": All equipment/property is sold "AS IS, WHERE IS" with no warranty or guarantees, expressed or implied, No operational assessments have been made by DPA Auctions on this item, it has been photographed ONLY.



#256 - John Deere 610 Chisel (DR0003)

John Deere 610 Chisel (DR0003), model 610, 20' hydraulic folding chisel plow, 22 shanks, walking tandem axles, rear harrow. Notes: Item Location: Bloomer, WI 54724 Equipment Sold "AS IS, WHERE IS": All equipment/property is sold "AS IS, WHERE IS" with no warranty or guarantees, expressed or implied, No operational assessments have been made by DPA Auctions on this item, it has been photographed ONLY.



#257 - DMI Ecolo-Tiger (DR0004)

DMI Ecolo-Tiger (DR0004), model 730, 18' 7 shank ripper, front coulters, rear covering discs. Notes: Item Location: Bloomer, WI 54724 Equipment Sold "AS IS, WHERE IS": All equipment/property is sold "AS IS, WHERE IS" with no warranty or guarantees, expressed or implied, No operational assessments have been made by DPA Auctions on this item, it has been photographed ONLY.



#258 - Badger Wagon (DR0006)

Badger Wagon (DR0006), green chop feed wagon, tandem rear axle, double apron chain, feeder bottom has been rebuilt. 10.00-15 tires. Notes: Item Location: Bloomer, WI 54724 Equipment Sold "AS IS, WHERE IS": All equipment/property is sold "AS IS, WHERE IS" with no warranty or guarantees, expressed or implied, No operational assessments have been made by DPA Auctions on this item, it has been photographed ONLY.



#259 - Hesston 7155 (DR0007)

Hesston 7155 (DR0007), pull type chopper, 22' inch 3 row corn head, adjustable tounge, hydraulic spout. Notes: Item Location: Bloomer, WI 54724 Equipment Sold "AS IS, WHERE IS": All equipment/property is sold "AS IS, WHERE IS" with no warranty or guarantees, expressed or implied, No operational assessments have been made by DPA Auctions on this item, it has been photographed ONLY.



#260 - GVL Snouts (DR9992)

GVL Snouts (DR9992), poly snouts for 8 row head, 22" rows. Notes: Item Location: Bloomer, WI 54724 Equipment Sold "AS IS, WHERE IS": All equipment/property is sold "AS IS, WHERE IS" with no warranty or guarantees, expressed or implied, No operational assessments have been made by DPA Auctions on this item, it has been photographed ONLY.



#261 - John Blue (Dr9996)

John Blue (Dr9996), ground drive liquid pump. Notes: Item Location: Bloomer, WI 54724 Equipment Sold "AS IS, WHERE IS": All equipment/property is sold "AS IS, WHERE IS" with no warranty or guarantees, expressed or implied, No operational assessments have been made by DPA Auctions on this item, it has been photographed ONLY.



#262 - John Deere Hoppers (DR0002)

John Deere Hoppers (DR0002), (3) 3 bushel seed hoppers. Notes: Item Location: Bloomer, WI 54724 Equipment Sold "AS IS, WHERE IS": All equipment/property is sold "AS IS, WHERE IS" with no warranty or guarantees, expressed or implied, No operational assessments have been made by DPA Auctions on this item, it has been photographed ONLY.



#263 - Hydraulic Auger (DR9994)

Hydraulic Auger (DR9994), hopper mount seed auger, hydraulic drive. Notes: Item Location: Bloomer, WI 54724 Equipment Sold "AS IS, WHERE IS": All equipment/property is sold "AS IS, WHERE IS" with no warranty or guarantees, expressed or implied, No operational assessments have been made by DPA Auctions on this item, it has been photographed ONLY.



#264 - Combine Tires (DR9999)

Combine Tires (DR9999), (2) rear tires ofr 8820 combine, 6" pilot hole, 8" center/center on bolt holes, 8 bolt pattern. Notes: Item Location: Bloomer, WI 54724 Equipment Sold "AS IS, WHERE IS": All equipment/property is sold "AS IS, WHERE IS" with no warranty or guarantees, expressed or implied, No operational assessments have been made by DPA Auctions on this item, it has been photographed ONLY.



#265 - Combine Shovels (DR9991)

Shovels (DR9991), knock on shovels approximately (42). Notes: Item Location: Bloomer, WI 54724 Equipment Sold "AS IS, WHERE IS": All equipment/property is sold "AS IS, WHERE IS" with no warranty or guarantees, expressed or implied, No operational assessments have been made by DPA Auctions on this item, it has been photographed ONLY.



#266 - John Deere Auger (DR9993)

John Deere Auger (DR9993), unloading auger for John Deere combine, part # AM146731. Notes: Item Location: Bloomer, WI 54724 Equipment Sold "AS IS, WHERE IS": All equipment/property is sold "AS IS, WHERE IS" with no warranty or guarantees, expressed or implied, No operational assessments have been made by DPA Auctions on this item, it has been photographed ONLY.



#267 - Skid Steer Snow Plow Attachment (DJR018)

Skid Steer Snow Plow Attachment (DJR018), 90", hydraulic angle. Notes: Equipment listed from Roger Fries estate. Personal inspections are welcome by appointment. Load out is by appointment also. Item Location: Cuba City, WI 53807 Equipment Sold "AS IS, WHERE IS": All equipment/property is sold "AS IS, WHERE IS" with no warranty or guarantees, expressed or implied, No operational assessments have been made by DPA Auctions on this item, it has been photographed ONLY.



#268 - Tarter 3pt Blade (DJR016)

Tarter 3pt Blade (DJR016), blade cat, 1 pins, 7' wide. Notes: Equipment listed from Roger Fries estate. Personal inspections are welcome by appointment. Load out is by appointment also. Item Location: Cuba City, WI 53807 Equipment Sold "AS IS, WHERE IS": All equipment/property is sold "AS IS, WHERE IS" with no warranty or guarantees, expressed or implied, No operational assessments have been made by DPA Auctions on this item, it has been photographed ONLY.



#269 - Skid Steer Pallet Fork/ Round Bale Spear (DJR017)

Skid Steer Pallet Fork/ Round Bale Spear (DJR017), 42" Forks, the bale spears are bolt on, remove tines and you have pallet forks, remove forks and you have a bale mover. Notes: Equipment listed from Roger Fries estate. Personal inspections are welcome by appointment. Load out is by appointment also. Item Location: Cuba City, WI 53807 Equipment Sold "AS IS, WHERE IS": All equipment/property is sold "AS IS, WHERE IS" with no warranty or guarantees, expressed or implied, No operational assessments have been made by DPA Auctions on this item, it has been photographed ONLY.



#270 - Weather Guard Portable Fuel Tank With Pump (DJR014)

Weather Guard Portable Fuel Tank With Pump (DJR014), 70 gallon capacity, Tokheim pump, tank is bolted to a pallet. Notes: Equipment listed from Roger Fries estate. Personal inspections are welcome by appointment. Load out is by appointment also. Item Location: Cuba City, WI 53807 Equipment Sold "AS IS, WHERE IS": All equipment/property is sold "AS IS, WHERE IS" with no warranty or guarantees, expressed or implied, No operational assessments have been made by DPA Auctions on this item, it has been photographed ONLY.



#271 - 3pt Mower (DJR015)

3pt Mower (DJR015), 540 pto gage wheel, 72" cutting width. Notes: Equipment listed from Roger Fries estate. Personal inspections are welcome by appointment. Load out is by appointment also. Item Location: Cuba City, WI 53807 Equipment Sold "AS IS, WHERE IS": All equipment/property is sold "AS IS, WHERE IS" with no warranty or guarantees, expressed or implied, No operational assessments have been made by DPA Auctions on this item, it has been photographed ONLY.



#272 - HotBlast Wood Shop Stove (DJR012)

HotBlast Wood Shop Stove (DJR012), has blower, has internal crack, firebricks missing, was used until replaced with new one. Notes: Equipment listed from Roger Fries estate. Personal inspections are welcome by appointment. Load out is by appointment also. Item Location: Cuba City, WI 53807 Equipment Sold "AS IS, WHERE IS": All equipment/property is sold "AS IS, WHERE IS" with no warranty or guarantees, expressed or implied, No operational assessments have been made by DPA Auctions on this item, it has been photographed ONLY.



#273 - Husky 7hp 60 gallon Air Compressor (DJR013)

Husky 7hp 60 gallon Air Compressor (DJR013), 11.8scfm @ 40psi, 10.35cfm @ 90 PSI, 135 PSI max, 240 volt single phase power, compressor will be unhooked by seller. Notes: Equipment listed from Roger Fries estate. Personal inspections are welcome by appointment. Load out is by appointment also. Item Location: Cuba City, WI 53807 Equipment Sold "AS IS, WHERE IS": All equipment/property is sold "AS IS, WHERE IS" with no warranty or guarantees, expressed or implied, No operational assessments have been made by DPA Auctions on this item, it has been photographed ONLY.



#274 - Hydraulic Cylinders (DR9995)

Hydraulic Cylinders (DR9995), (2) John Deere hydraulic 2 way cylinders. Notes: Item Location: Bloomer, WI 54724 Equipment Sold "AS IS, WHERE IS": All equipment/property is sold "AS IS, WHERE IS" with no warranty or guarantees, expressed or implied, No operational assessments have been made by DPA Auctions on this item, it has been photographed ONLY.



#275 - Quick Hitch (DR9997)

Quick Hitch (DR9997), John Deere 3 point quick hitch. Notes: Item Location: Bloomer, WI 54724 Equipment Sold "AS IS, WHERE IS": All equipment/property is sold "AS IS, WHERE IS" with no warranty or guarantees, expressed or implied, No operational assessments have been made by DPA Auctions on this item, it has been photographed ONLY.



#276 - Sweep Auger (DR9998)

Sweep Auger (DR9998), electric drive sweep auger for 36" grain bin, USED ONCE. Notes: Item Location: Bloomer, WI 54724 Equipment Sold "AS IS, WHERE IS": All equipment/property is sold "AS IS, WHERE IS" with no warranty or guarantees, expressed or implied, No operational assessments have been made by DPA Auctions on this item, it has been photographed ONLY.



#277 - Sieves (DR10,000)

Sieves (DR10,000), (8) assorted sieves and chaffers for John Deere 7720 & 8820 combine. Notes: Item Location: Bloomer, WI 54724 Equipment Sold "AS IS, WHERE IS": All equipment/property is sold "AS IS, WHERE IS" with no warranty or guarantees, expressed or implied, No operational assessments have been made by DPA Auctions on this item, it has been photographed ONLY.



#278 - Allis Chalmers T816 (DR0001)

Allis Chalmers T816 (DR0001), riding mower, Briggs 16hp gas engine, 42" deck. Notes: Item Location: Bloomer, WI 54724 Equipment Sold "AS IS, WHERE IS": All equipment/property is sold "AS IS, WHERE IS" with no warranty or guarantees, expressed or implied, No operational assessments have been made by DPA Auctions on this item, it has been photographed ONLY.



#279 - John Deere 7000 Planter (PZ0112)

John Deere 7000 Planter (PZ0112), John Deere 7000 16 row planter, marker. Notes: Item Location: Tremont, IL 61568 Equipment Sold "AS IS, WHERE IS": All equipment/property is sold "AS IS, WHERE IS" with no warranty or guarantees, expressed or implied, No operational assessments have been made by DPA Auctions on this item, it has been photographed ONLY.



#280 - 2005 Neville Built Grain Trailer (PZ0100)

2005 Neville Built Grain Trailer (PZ0100), 2005 Neville Built 30' hopper bottom grain trailer, tandem axle, spring suspension, shurlock electric roll over tarp, 11R22.5 tires. Notes: Field Ready. Item Location: Oelwein, IA 50662 Equipment Sold "AS IS, WHERE IS": All equipment/property is sold "AS IS, WHERE IS" with no warranty or guarantees, expressed or implied, No operational assessments have been made by DPA Auctions on this item, it has been photographed ONLY.



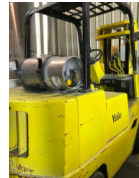
#280A - 2012 Premier 240 RF (CG522)

2012 Premier 240 RF (CG522), Yamaha 50 hp 4 stroke, cover, Bimini top, raised helm, filler cushion, single axle trailer. Notes: Item Location: Valley, NE 68064 Equipment Sold "AS IS, WHERE IS": All equipment/property is sold "AS IS, WHERE IS" with no warranty or guarantees, expressed or implied, No operational assessments have been made by DPA Auctions on this item, it has been photographed ONLY.



#281 - Yale Forklift (NP7145)

Yale Forklift (NP7145), LP gas, shuttle shift, forks. Notes: Item Location: Donovan, IL 60931 Equipment Sold "AS IS, WHERE IS": All equipment/property is sold "AS IS, WHERE IS" with no warranty or guarantees, expressed or implied, No operational assessments have been made by DPA Auctions on this item, it has been photographed ONLY.



#282 - Energy Miser Continuous Flow Grain Dryer (NP7139)

Energy Miser Continuous Flow Grain Dryer (NP7139), Model SA1200C, grain holding capacity 970 cu. ft. or 777 bushels, 3 phase, 230 volts, burner rating: Max 12,000,000 BTU/HR, Min 2,250,000 BTU/HR. Notes: This item must be dismantled and removed by November 30, 2018, NO EXCEPTIONS. Dismantle, removal and transportation is at the expense, risk and liability of the buyer. Item Location: Donovan, IL 60931 Equipment Sold "AS IS, WHERE IS": All equipment/property is sold "AS IS, WHERE IS" with no warranty or guarantees, expressed or implied, No operational assessments have been made by DPA Auctions on this item, it has been photographed ONLY.



#283 - Easy Miser Continuous Flow Grain Dryer (NP7140)

Easy Miser Continuous Flow Grain Dryer (NP7140), Model SA1200C, grain holding capacity 970 cu. ft. or 777 bushels, 3 phase, 460 volts, burner rating: Max 12,000,000 BTU/HR, Min 2,250,000 BTU/HR. Notes: This item must be dismantled and removed by November 30, 2018, NO EXCEPTIONS. Dismantle, removal and transportation is at the expense, risk and liability of the buyer. Item Location: Donovan, IL 60931 Equipment Sold "AS IS, WHERE IS": All equipment/property is sold "AS IS, WHERE IS" with no warranty or guarantees, expressed or implied, No operational assessments have been made by DPA Auctions on this item, it has been photographed ONLY.



#284 - Sudenga Super Scoop (NP7143)

Sudenga Super Scoop (NP7143), 3 point mount, hydraulic, PTO, portable. Notes: Item Location: Donovan, IL 60931 Equipment Sold "AS IS, WHERE IS": All equipment/property is sold "AS IS, WHERE IS" with no warranty or guarantees, expressed or implied, No operational assessments have been made by DPA Auctions on this item, it has been photographed ONLY.



#285 - Hutchinson Squeeze Belt Conveyor (NP7147)

Hutchinson Squeeze Belt Conveyor (NP7147), portable, PTO, hydraulic. Notes: Item Location: Martinton, IL 60951 Equipment Sold "AS IS, WHERE IS": All equipment/property is sold "AS IS, WHERE IS" with no warranty or guarantees, expressed or implied, No operational assessments have been made by DPA Auctions on this item, it has been photographed ONLY.



#286 - Westfield Auger (NP7148)

Westfield Auger (NP7148), Model MK130-111, portable, hydraulic. Notes: Item Location: Martinton, IL 60951 Equipment Sold "AS IS, WHERE IS": All equipment/property is sold "AS IS, WHERE IS" with no warranty or guarantees, expressed or implied, No operational assessments have been made by DPA Auctions on this item, it has been photographed ONLY.



#287 - Fiat Allis 545-B Loader (NP7138)

Fiat Allis 545-B Loader (NP7138), cab, bucket. Notes: Item Location: Iroquois, IL 60945 Equipment Sold "AS IS, WHERE IS": All equipment/property is sold "AS IS, WHERE IS" with no warranty or guarantees, expressed or implied, No operational assessments have been made by DPA Auctions on this item, it has been photographed ONLY.



#288 - 1983 Penske Tank Trailer (NP7146)

1983 Penske Tank Trailer (NP7146), approx. 9,600 gallon (3150-1545,2130-2775), tandem axle, Head Mat?l 54-54-0, Shell Mat?l 54-54-h-32, Loading Limits 1200 G.P.M. Per Compt., GVWR 68,000lbs. Notes: Item Location: Donovan, IL 60931 Equipment Sold "AS IS, WHERE IS": All equipment/property is sold "AS IS, WHERE IS" with no warranty or guarantees, expressed or implied, No operational assessments have been made by DPA Auctions on this item, it has been photographed ONLY.



#289 - 1981 Timpte Grain Trailer (NP7137)

1981 Timpte Grain Trailer (NP7137), tandem axle, spring suspension, roll tarp. Notes: Item Location: Iroquois, IL 60945 Equipment Sold "AS IS, WHERE IS": All equipment/property is sold "AS IS, WHERE IS" with no warranty or guarantees, expressed or implied, No operational assessments have been made by DPA Auctions on this item, it has been photographed ONLY.



#291 - 2001 Ford F-250 Pickup (NP7141)

2001 Ford F-250 Pickup (NP7141), 4x4 Off Road, regular cab, Triton V10 gas engine, automatic transmission, heat, air conditioning, Am/Fm radio, running boards, LT245/75R16 tires. Notes: Item Location: Iroquois, IL 60945 Equipment Sold "AS IS, WHERE IS": All equipment/property is sold "AS IS, WHERE IS" with no warranty or guarantees, expressed or implied, No operational assessments have been made by DPA Auctions on this item, it has been photographed ONLY.



#292 - Dultmeier Pressure Washer (NP7136)

Dultmeier Pressure Washer (NP7136), Model DS5-3000 LP, pressure 3000 PSI, flow 5 GPM, power 230V 60 HZ, firing rate 440,000 BTU/Hr. Notes: Item Location: Robinson, KS 66532 Equipment Sold "AS IS, WHERE IS": All equipment/property is sold "AS IS, WHERE IS" with no warranty or guarantees, expressed or implied, No operational assessments have been made by DPA Auctions on this item, it has been photographed ONLY.



#293 - 1986 Merritt Hoggac Livestock Pot Trailer (NP7135)

1986 Merritt Hoggac Livestock Pot Trailer (NP7135), 48' x 102", tandem axle, 285/75R24.5 tires 60% tread, good brakes, farmer owned. Notes: Item Location: Robinson, KS 66532 Equipment Sold "AS IS, WHERE IS": All equipment/property is sold "AS IS, WHERE IS" with no warranty or guarantees, expressed or implied, No operational assessments have been made by DPA Auctions on this item, it has been photographed ONLY.



#294 - Buffalo Stalk Chopper (TR5821)

Buffalo Stalk Chopper (TR5821), Model 52011630, 16 row chopper, approx, 40, hydraulic fold. Notes: Item Location: Hooper, NE 68031 Equipment Sold "AS IS, WHERE IS": All equipment/property is sold "AS IS, WHERE IS" with no warranty or guarantees, expressed or implied, No operational assessments have been made by DPA Auctions on this item, it has been photographed ONLY.



#295 - 2011 Lexion 12-30 Corn Head (TR5822)

2011 Lexion 12-30 Corn Head (TR5822), 12 row corn head, 30', Inspection was recently done and the following was replaced on this head: Earsavers, Inner auger tough liners, both auger drive chains, hood shocks, driveline shield mounts, Auto Pilot wand bushings, chain guides. Notes: Item Location: Hooper, NE 68031 Equipment Sold "AS IS, WHERE IS": All equipment/property is sold "AS IS, WHERE IS" with no warranty or guarantees, expressed or implied, No operational assessments have been made by DPA Auctions on this item, it has been photographed ONLY.



#296 - Blade/Winch (TR5820)

Blade/Winch (TR5820), Blade with cutting edge and mounts, Winch with motor and wiring, approx 5' blade. Notes: Item Location: Hooper, NE 68031 Equipment Sold "AS IS, WHERE IS": All equipment/property is sold "AS IS, WHERE IS" with no warranty or guarantees, expressed or implied, No operational assessments have been made by DPA Auctions on this item, it has been photographed ONLY.



#297 - 1999 Trail King Step Deck (TR5864)

1999 Trail King Step Deck (TR5864), 48' trailer, spread axle, (2) hanging side tool boxes, LCS series, 11' top deck, 2' custom rear extension, wood floor, Sliding winch track, 30" king pin, Newer tires, dump valve, air ride suspension, air brakes, everything on the trailer works and has good brakes, 255/70R22.5 tires. Notes: Item Location: Clarkson, NE 68629 Equipment Sold "AS IS, WHERE IS": All equipment/property is sold "AS IS, WHERE IS" with no warranty or guarantees, expressed or implied, No operational assessments have been made by DPA Auctions on this item, it has been photographed ONLY.



#298 - 1993 KW T600A (TR5862)

1993 KW T600A (TR5862), Detroit Series 60 engine, Jake brake, Straight Pipes, New leader Lt 16 dry bed, 9 speed, Around 1,051,000 miles we think. Tires 50% on average. Notes: PLEASE ALLOW AT LEAST 30 DAYS FOR TITLE TRANSFER. Item Location: Camp Point, IL 62320 Equipment Sold "AS IS, WHERE IS": All equipment/property is sold "AS IS, WHERE IS" with no warranty or guarantees, expressed or implied, No operational assessments have been made by DPA Auctions on this item, it has been photographed ONLY.



#300 - 1995 IHC 4700 Fuel Truck (TR5814)

1995 IHC 4700 Fuel Truck (TR5814), Detroit diesel engine, 6 plus transmission, cruise control, single axle, AM/FM radio, Heat/AC, spring ride suspension, 22.5 tires, 1995 Progress E80ST fuel body, 2100 gal capacity, 5 compartment, 2 hose reels and meters, tank VIN: 39201. shows 150,316 MILES. Notes: Item Location: Davey, NE 68336 Equipment Sold "AS IS, WHERE IS": All equipment/property is sold "AS IS, WHERE IS" with no warranty or guarantees, expressed or implied, No operational assessments have been made by DPA Auctions on this item, it has been photographed ONLY.



#301 - Parker Weigh Wagon (ED629)

Parker Weigh Wagon (ED629), 20 HP Honda motor, steel auger, digital scale, roll over tarp, side discharge. Notes: Item Location: Davis, IL 61019 Equipment Sold "AS IS, WHERE IS": All equipment/property is sold "AS IS, WHERE IS" with no warranty or guarantees, expressed or implied, No operational assessments have been made by DPA Auctions on this item, it has been photographed ONLY.



#303 - Geringhoff 1222 Corn Head (PD915)

Geringhoff 1222 Corn Head (PD915), rotary disc chops, poly corn snouts good, hydraulic deck plates, some discs worn, works good, good condition. Notes: Item Location: Ridgeland, WI 54763 Equipment Sold "AS IS, WHERE IS": All equipment/property is sold "AS IS, WHERE IS" with no warranty or guarantees, expressed or implied, No operational assessments have been made by DPA Auctions on this item, it has been photographed ONLY.



#304 - Cat IT28G Loader (DL288)

Cat IT28G Loader (DL288), fresh paint, no hydraulic leaks, runs great, hydraulic quick coupler comes with bucket and forks, solid filled tires, shows 7826 hours. Notes: Item Location: Mount Vernon, IL 62864 Equipment Sold "AS IS, WHERE IS": All equipment/property is sold "AS IS, WHERE IS" with no warranty or guarantees, expressed or implied, No operational assessments have been made by DPA Auctions on this item, it has been photographed ONLY.



#305 - 15' Great Plains No Till Drill (AL498)

15' Great Plains No Till Drill (AL498), 7 1/2" spacing, small seed attachment, S/N: GP-2796Z Model: CPH-15 92 13. Notes: Item Location: Albia, IA 52531 Equipment Sold "AS IS, WHERE IS": All equipment/property is sold "AS IS, WHERE IS" with no warranty or guarantees, expressed or implied, No operational assessments have been made by DPA Auctions on this item, it has been photographed ONLY.



#306 - Clipper Cleaner Super X 297 D (KMK607)

Clipper Cleaner Super X 297 D (KMK607), ball racks, brush/roller are included not currently in use so unsure of their condition, many screens are new, some are older but still functional, Screens: 1/20, 22x2, 6x24, 6x38, 1/16, 6x23, 6x30, 26x26, 1/2 RD, 1/15, 5/64, 6x21, 4x20, 6x36, 6x42, 6RD, 1/14, 1/16 RD, 6x30, 6x24, 1/14x1/4, 3/16x1, 1/14x1/4, 6x38, Baltrac motor, 3 phase, 3 hp. Notes: This Clipper cleaner has been a part of our family for 4 generations. It has significant wear and tear. I tried to capture the damaged areas in pictures. We used the cleaner through the 2017 season. Purchased a new cleaner that better fits our needs. Item Location: Canby, OR 97013 Equipment Sold "AS IS, WHERE IS": All equipment/property is sold "AS IS, WHERE IS" with no warranty or guarantees, expressed or implied, No operational assessments have been made by DPA Auctions on this item, it has been photographed ONLY.



#307 - 1980 Big Joe Walkie Stacker (PD920)

1980 Big Joe Walkie Stacker (PD920), model PDM 29-60, single stage mast with 60 inch lift, 1 way hydraulic, 24 volt electric, built in charger. Notes: Item Location: Saint Louis, MO 63132 Equipment Sold "AS IS, WHERE IS": All equipment/property is sold "AS IS, WHERE IS" with no warranty or guarantees, expressed or implied, No operational assessments have been made by DPA Auctions on this item, it has been photographed ONLY.



#308 - 1988 Crown 20MT Straddle Stacker (PD905)

1988 Crown 20MT Straddle Stacker (PD905), 12volt - 24 volt system, 2 stage mast, 71 inch - 90 inch with forks, no backrest, drive tire a little rough, very useable, paint in good shape, all sheet metal straight, everything operates and works as it should, has a press pad vs a key switch, we have the code. Notes: Item Location: Saint Louis, MO 63132 Equipment Sold "AS IS, WHERE IS": All equipment/property is sold "AS IS, WHERE IS" with no warranty or guarantees, expressed or implied, No operational assessments have been made by DPA Auctions on this item, it has been photographed ONLY.



#309 - 1988 Crown 20MT Straddle Stacker (PD907)

1988 Crown 20MT Straddle Stacker (PD907), 12volt - 24 volt system, 2 stage mast, 71 inch - 90 inch with forks, no backrest, tires all okay and useable, very useable, paint in good shape, all sheet metal straight, everything operates and works as it should, has a press pad vs a key switch, we have the code. Notes: Item Location: Saint Louis, MO 63132 Equipment Sold "AS IS, WHERE IS": All equipment/property is sold "AS IS, WHERE IS" with no warranty or guarantees, expressed or implied, No operational assessments have been made by DPA Auctions on this item, it has been photographed ONLY.



#310 - 2007 Big Joe Walkie Stacker (PD919)

2007 Big Joe Walkie Stacker (PD919), Model PD-24-T8, 2 stage mast of 72-96 inches, 1 way hydraulic control valve, 24 volt battery. Notes: Item Location: Saint Louis, MO 63132 Equipment Sold "AS IS, WHERE IS": All equipment/property is sold "AS IS, WHERE IS" with no warranty or guarantees, expressed or implied, No operational assessments have been made by DPA Auctions on this item, it has been photographed ONLY.



#311 - LDJ Corn Burning Furnace (TH326)

LDJ Corn Burning Furnace (TH326), model LDJ620-10 furnace, model 14 bin. Notes: Item Location: Coon Rapids, IA 50058 Equipment Sold "AS IS, WHERE IS": All equipment/property is sold "AS IS, WHERE IS" with no warranty or guarantees, expressed or implied, No operational assessments have been made by DPA Auctions on this item, it has been photographed ONLY.



#312 - Landoll 2320F Disk Ripper (PD916)

Landoll 2320F Disk Ripper (PD916), 5 bar spike harrow, frame in excellent shape, blades at 20 inches, points fair, shanks are good, tires are average. Notes: Item Location: Wadesville, IN 47638 Equipment Sold "AS IS, WHERE IS": All equipment/property is sold "AS IS, WHERE IS" with no warranty or guarantees, expressed or implied, No operational assessments have been made by DPA Auctions on this item, it has been photographed ONLY.



#313 - Chem Farm 18 Foot Chisel Plow (PD917)

Chem Farm 18 Foot Chisel Plow (PD917), 18 Foot, Yetter coulters, 2 inch points. Notes: Item Location: Wadesville, IN 47638 Equipment Sold "AS IS, WHERE IS": All equipment/property is sold "AS IS, WHERE IS" with no warranty or guarantees, expressed or implied, No operational assessments have been made by DPA Auctions on this item, it has been photographed ONLY.



#314 - 1996 Tyler 3300 Dry Spreader (KMK609)

1996 Tyler 3300 Dry Spreader (KMK609), Tyler Titan 3300, John Deere diesel engine, 6 speed Allison automatic transmission, heat and air conditioning, Panasonic am/fm/cassette radio, New Leader L3020 GT, stainless steel dry box, dual spinner, Raven SCS 660, 1000/ 50 R 25 rear tires with very little use, 66 x 43.00 - 25 front tires, shows 46,468 miles, shows 6031 hours. Notes: Item Location: Harlan, IA 51537 Equipment Sold "AS IS, WHERE IS": All equipment/property is sold "AS IS, WHERE IS" with no warranty or guarantees, expressed or implied, No operational assessments have been made by DPA Auctions on this item, it has been photographed ONLY.



#315 - Speed King Conveyor (KMK610)

Speed King Conveyor (KMK610), Speed King stainless steel undercar conveyor, approx. 30' length, Westfield system, Powerhorse 420 cc engine, gas, less than 2 years old, 9.5L - 15 SL tires. Notes: Item Location: Harlan, IA 51537 Equipment Sold "AS IS, WHERE IS": All equipment/property is sold "AS IS, WHERE IS" with no warranty or guarantees, expressed or implied, No operational assessments have been made by DPA Auctions on this item, it has been photographed ONLY.



#316 - (2) CMi SF-450 Four Track Concrete Slipform Pavers with Fontaine Semi-Trailers (ED637)

(2) CMi SF-450 Four Track Concrete Slipform Pavers with Fontaine Semi-Trailers (ED637), one paves 31' wide, with 25 vibrators, tamper bar, 2 augers, float pan, 12' Gomaco auto-float, a 4' wide concrete conveyor with it's own diesel hydraulic power unit and a removable over the concrete truck sensor arm. It can pave up to 38' wide. The second CMi SF-450 was built at the same time with a consecutive SN, parts interchange therefore there are loads of extra parts for the machines. Both machines, extra parts and 2 Fontaine semi-trailers included in one lot. Notes: This one lot includes both paver machines, extra parts for machines and 2 Fontaine semi-trailers. Item Location: Spencer, IA 51301 Equipment Sold "AS IS, WHERE IS": All equipment/property is sold "AS IS, WHERE IS" with no warranty or guarantees, expressed or implied, No operational assessments have been made by DPA Auctions on this item, it has been photographed ONLY.



#317 - Mitsubishi MS120 Excavator (ED640)

Mitsubishi MS120 Excavator (ED640), approximately 32,000 pounds, has hydraulic thumb, includes 3 buckets: 24", 36" with damaged cutting edge and a 60" backfill/cleanup bucket, unit has fast, low effort joystick controls, Mitsubishi diesel runs great and starts easier in cold weather than all other diesels seller has owned. Notes: Item Location: Spencer, IA 51301 Equipment Sold "AS IS, WHERE IS": All equipment/property is sold "AS IS, WHERE IS" with no warranty or guarantees, expressed or implied, No operational assessments have been made by DPA Auctions on this item, it has been photographed ONLY.



#318 - Drott 50 Case Excavator (ED643)

Drott 50 Case Excavator (ED643), approximately 51,000 pounds, this excavator is specially equipped with a tilt mechanism, everything above the tracks tilts left or right, includes 3 buckets: standard 36", a long 36" and a 61" backfill and cleanup bucket, maximum depth is about 22 feet, replaced the old Detroit diesel with a Cummins. Notes: Item Location: Spencer, IA 51301 Equipment Sold "AS IS, WHERE IS": All equipment/property is sold "AS IS, WHERE IS" with no warranty or guarantees, expressed or implied, No operational assessments have been made by DPA Auctions on this item, it has been photographed ONLY.



#319 - Case 220B Excavator (ED644)

Case 220B Excavator (ED644), approximately 99,000 pounds, includes 4 buckets: 36" without teeth, 46" step bucket with 22" X 22" drop center, 48" bucket with teeth and 84" bucket without teeth, bucket, stick and boom pins are very tight, Deutz V10 air cooled diesel was rebuilt about 4,000 hours ago (\$25,000 engine rebuild) unit runs great. Notes: Item Location: Spencer, IA 51301 Equipment Sold "AS IS, WHERE IS": All equipment/property is sold "AS IS, WHERE IS" with no warranty or guarantees, expressed or implied, No operational assessments have been made by DPA Auctions on this item, it has been photographed ONLY.



#320 - Komatsu GD 605 A-3 Motor Grader (ED639)

Komatsu GD 605 A-3 Motor Grader (ED639), articulated steering, 14 foot blade with side shift and tilt, has rear ripper, matching drive tires have 90% tread, unit has engine heater and two cab heaters for snow plowing. Notes: Item Location: Spencer, IA 51301 Equipment Sold "AS IS, WHERE IS": All equipment/property is sold "AS IS, WHERE IS" with no warranty or guarantees, expressed or implied, No operational assessments have been made by DPA Auctions on this item, it has been photographed ONLY.



#321 - Caterpillar 988 Four Wheel Drive Loader (ED638)

Caterpillar 988 Four Wheel Drive Loader (ED638), CAT diesel engine with an engine heater, CAT powershift transmission, 2 cab heaters, 29.5-25 tires, this loader moves lots of snow and gravel. Notes: Item Location: Spencer, IA 51301 Equipment Sold "AS IS, WHERE IS": All equipment/property is sold "AS IS, WHERE IS" with no warranty or guarantees, expressed or implied, No operational assessments have been made by DPA Auctions on this item, it has been photographed ONLY.



#322 - Michigan 310H Self Loading Scraper (ED641)

Michigan 310H Self Loading Scraper (ED641), V12 diesel, 535 HP, 8 speed powershift transmission, 31 cubic yard capacity, low hours on an engine rebuild, 68 seconds is the quickest seller has loaded a full load without a push. Notes: Loads of spare parts plus duals for front and back included. Total of 12 tires and wheels are included. Item Location: Spencer, IA 51301 Equipment Sold "AS IS, WHERE IS": All equipment/property is sold "AS IS, WHERE IS" with no warranty or guarantees, expressed or implied, No operational assessments have been made by DPA Auctions on this item, it has been photographed ONLY.



#323 - 1982 End Dump Semi Trailer (ED642)

1982 End Dump Semi Trailer (ED642), 19 foot long dump box with a 1/2 inch thick plastic liner to help keep dirt from sticking, liner is UV stabilized, also has a box vibrator and a tarp, hoist is in good condition. Notes: Item Location: Spencer, IA 51301 Equipment Sold "AS IS, WHERE IS": All equipment/property is sold "AS IS, WHERE IS" with no warranty or guarantees, expressed or implied, No operational assessments have been made by DPA Auctions on this item, it has been photographed ONLY.



#324 - 1970 Chevrolet Fuel Truck (ED645)

1970 Chevrolet Fuel Truck (ED645), engine was replaced about 15 years ago with a Chevrolet remanufactured V8, auto shut off fuel nozzle was replaced over a year ago (\$500), truck has 5 fuel compartments, the end one leaks so seller locked it and threw away the key, other 4 compartments hold a total of 1300 gallons (500-300-300-200). Notes: Item Location: Spencer, IA 51301 Equipment Sold "AS IS, WHERE IS": All equipment/property is sold "AS IS, WHERE IS" with no warranty or guarantees, expressed or implied, No operational assessments have been made by DPA Auctions on this item, it has been photographed ONLY.



#325 - John Deere 12' Pickup Head (TH330)

John Deere 12' Pickup Head (TH330), 4 belt orbit drive pickup. Notes: Bought 2nd owner in 1984, always stored in the shed since then. Item Location: Randolph, NE 68771 Equipment Sold "AS IS, WHERE IS": All equipment/property is sold "AS IS, WHERE IS" with no warranty or guarantees, expressed or implied, No operational assessments have been made by DPA Auctions on this item, it has been photographed ONLY.



#326 - 2005 Wilson Belt Trailer (AL489)

2005 Wilson Belt Trailer (AL489), tandem axle, new 11R22.5 tires, new tarp, rebuilt 12/23/13 including eye pin assembly, replaced main belt, tarp bows, end gate hinge, and kingpin, unit 20. Notes: Item Location: Postville, IA 52162 Equipment Sold "AS IS, WHERE IS": All equipment/property is sold "AS IS, WHERE IS" with no warranty or guarantees, expressed or implied, No operational assessments have been made by DPA Auctions on this item, it has been photographed ONLY.



#327 - 1975 Fruehauf Liquid Transport Trailer (AL496)

1975 Fruehauf Liquid Transport Trailer (AL496), 8800 gallon, tandem axle, 285/75R24.5 tires, aluminum, 4 compartments, fenders, rear access ladder, pump, compartment 1 2500 gal, compartment 2 1300 gal, compartment 3 2400 gal, compartment 4 2600 gallon. Notes: Item Location: Postville, IA 52162 Equipment Sold "AS IS, WHERE IS": All equipment/property is sold "AS IS, WHERE IS" with no warranty or guarantees, expressed or implied, No operational assessments have been made by DPA Auctions on this item, it has been photographed ONLY.



#328 - 2003 Merritt Grain Trailer (AL490)

2003 Merritt Grain Trailer (AL490), tandem axle, 11R24.5 tires, 2 compartments, roll tarp, front and rear ladders, unit 6. Notes: Item Location: Postville, IA 52162 Equipment Sold "AS IS, WHERE IS": All equipment/property is sold "AS IS, WHERE IS" with no warranty or guarantees, expressed or implied, No operational assessments have been made by DPA Auctions on this item, it has been photographed ONLY.



#329 - 1996 Wilson DWH400 Grain Trailer (AL491)

1996 Wilson DWH400 Grain Trailer (AL491), tandem axle, pace setter, new tarp, good field to farm trailer, front and rear ladder, 2 compartments, unit 5. Notes: Item Location: Postville, IA 52162 Equipment Sold "AS IS, WHERE IS": All equipment/property is sold "AS IS, WHERE IS" with no warranty or guarantees, expressed or implied, No operational assessments have been made by DPA Auctions on this item, it has been photographed ONLY.



#330 - 1990 Wilson Grain Trailer (AL492)

1990 Wilson Grain Trailer (AL492), tandem axle, 11R22.5 tires, 2 compartments, tarp is ripped, unit 2, good field to farm trailer. Notes: Item Location: Postville, IA 52162 Equipment Sold "AS IS, WHERE IS": All equipment/property is sold "AS IS, WHERE IS" with no warranty or guarantees, expressed or implied, No operational assessments have been made by DPA Auctions on this item, it has been photographed ONLY.



#331 - 1990 Timpfe Grain Trailer (AL493)

1990 Timpfe Grain Trailer (AL493), tandem axle, 2 compartments, new shurlock tarp, front and rear ladder, stainless steel, 10' 4" height, GVWR 65,000, unit 4, good field to farm trailer. Notes: Item Location: Postville, IA 52162 Equipment Sold "AS IS, WHERE IS": All equipment/property is sold "AS IS, WHERE IS" with no warranty or guarantees, expressed or implied, No operational assessments have been made by DPA Auctions on this item, it has been photographed ONLY.



#332 - 2015 Wilson Grain Trailer (AL488)

2015 Wilson Grain Trailer (AL488), high side 79" side wall, tandem axle, eight aluminum rims, 285/75R24.5 tires, pace setter, unit 813, roll tarp, front and rear hopper vibrators. Notes: Item Location: Postville, IA 52162 Equipment Sold "AS IS, WHERE IS": All equipment/property is sold "AS IS, WHERE IS" with no warranty or guarantees, expressed or implied, No operational assessments have been made by DPA Auctions on this item, it has been photographed ONLY.



#333 - 1996 Southern Classic Livestock Trailer (AL495)

1996 Southern Classic Livestock Trailer (AL495), 7x26, tandem axle, two compartments, feeder pig trailer, gooseneck trailer, GVWR 14,000 lbs. Notes: Item Location: Postville, IA 52162 Equipment Sold "AS IS, WHERE IS": All equipment/property is sold "AS IS, WHERE IS" with no warranty or guarantees, expressed or implied, No operational assessments have been made by DPA Auctions on this item, it has been photographed ONLY.



#334 - 1993 Wilson PSDCL-302 Livestock Trailer (AL494)

1993 Wilson PSDCL-302 Livestock Trailer (AL494), 48'x102", tandem axle, damage to the passenger side. Notes: Item Location: Postville, IA 52162 Equipment Sold "AS IS, WHERE IS": All equipment/property is sold "AS IS, WHERE IS" with no warranty or guarantees, expressed or implied, No operational assessments have been made by DPA Auctions on this item, it has been photographed ONLY.



#335 - 2009 International Prostar Eagle Premium (AL480)

2009 International Prostar Eagle Premium (AL480), Cummins ISx450 diesel engine, automatic transmission, am/FM CD radio, black day cab, 11R/22.5 tires half tread, dual fuel tanks, tandem axle, air ride suspension, heat & AC, cruise control, shows 376,700 miles. Notes: Item Location: Postville, IA 52162 Equipment Sold "AS IS, WHERE IS": All equipment/property is sold "AS IS, WHERE IS" with no warranty or guarantees, expressed or implied, No operational assessments have been made by DPA Auctions on this item, it has been photographed ONLY.



#336 - 2005 Freightliner Conventional Columbia (AL481)

2005 Freightliner Conventional Columbia (AL481), Detroit diesel series 60 engine, 10 speed Eaton Fuller transmission, am/FM CD radio, white day cab, 295/75R22.5, wet kit, dual fuel tanks, heat & ac, tandem axle, shows 858,757 miles. Notes: Item Location: Postville, IA 52162 Equipment Sold "AS IS, WHERE IS": All equipment/property is sold "AS IS, WHERE IS" with no warranty or guarantees, expressed or implied, No operational assessments have been made by DPA Auctions on this item, it has been photographed ONLY.



#337 - 1992 Freightliner FLD120064 (AL482)

1992 Freightliner FLD120064 (AL482), Detroit motor, 13 speed, am/FM cassette radio, blue sleeper, 285/75R24.5 tires, half tread, all aluminum rims, engine overhauled, tandem axle, 5th wheel, air ride suspension, heat & ac, shows 1,046,610 miles. Notes: Item Location: Postville, IA 52162 Equipment Sold "AS IS, WHERE IS": All equipment/property is sold "AS IS, WHERE IS" with no warranty or guarantees, expressed or implied, No operational assessments have been made by DPA Auctions on this item, it has been photographed ONLY.



#338 - 1996 Freightliner Med Conv FL80 (AL487)

1996 Freightliner Med Conv FL80 (AL487), diesel engine, automatic transmission, front aluminum rims, 11R22.5 tires, rear steel 11R22.5, 5 3T compartments, tandem axle, air ride suspension, shows 186,868 miles. Notes: Item Location: Postville, IA 52162 Equipment Sold "AS IS, WHERE IS": All equipment/property is sold "AS IS, WHERE IS" with no warranty or guarantees, expressed or implied, No operational assessments have been made by DPA Auctions on this item, it has been photographed ONLY.



#339 - 1989 Freightliner (AL483)

1989 Freightliner (AL483), 3406 Cat Engine, 13 speed transmission, am/FM cassette radio, blue day cab, 285/75R24.5 tires, wet kit, overhauled, two aluminum steer tires brand new, rear tires brand new, tandem axle, 5th wheel, air ride suspension, heat & ac, shows 1,033,000 miles. Notes: Item Location: Postville, IA 52162 Equipment Sold "AS IS, WHERE IS": All equipment/property is sold "AS IS, WHERE IS" with no warranty or guarantees, expressed or implied, No operational assessments have been made by DPA Auctions on this item, it has been photographed ONLY.



#340 - 2007 Sterling LT 8500 (AL486)

2007 Sterling LT 8500 (AL486), diesel engine, automatic transmission, am/FM BD radio, 11R22.5 tires, 5 3T compartments, front aluminum rims, heat & ac, cruise control, tandem axle, air ride suspension, shows 158,904 miles, shows 13,623 hours. Notes: Item Location: Postville, IA 52162 Equipment Sold "AS IS, WHERE IS": All equipment/property is sold "AS IS, WHERE IS" with no warranty or guarantees, expressed or implied, No operational assessments have been made by DPA Auctions on this item, it has been photographed ONLY.



#341 - 1999 Dodge Ram 3500 1 Ton Flat Bed (AL485)

1999 Dodge Ram 3500 1 Ton Flat Bed (AL485), manual transmission, am/FM radio, power windows, aluminum flat bed, storage box on driver and passenger side, headache rack, rear hitch, heat & ac, cruise control, shows 103,841 miles. Notes: Item Location: Postville, IA 52162 Equipment Sold "AS IS, WHERE IS": All equipment/property is sold "AS IS, WHERE IS" with no warranty or guarantees, expressed or implied, No operational assessments have been made by DPA Auctions on this item, it has been photographed ONLY.



#342 - 2003 Chevy Silverado 2500 HD With Plow (AL484)

2003 Chevy Silverado 2500 HD With Plow (AL484), automatic transmission, am/FM radio, power windows, 245/75R16 tires, western snow V plow, 4WD, heat & ac, cruise control, shows 123,091 miles. Notes: Item Location: Postville, IA 52162 Equipment Sold "AS IS, WHERE IS": All equipment/property is sold "AS IS, WHERE IS" with no warranty or guarantees, expressed or implied, No operational assessments have been made by DPA Auctions on this item, it has been photographed ONLY.



#343 - 2000 RoGator 854 (DR9851)

2000 RoGator 854 (DR9851), Cummins diesel engine, hydrostatic drive, 800 gallon stainless steel liquid system, 60' booms, foam markers, 3 way nozzle bodies, Raven 661 monitor, cab heat/air conditioning, 385/85R34 tires, shows 5452 hours. Notes: This machine has a hydro leak and 1 bad wheel motor. Item Location: West Salem, WI 54669 Equipment Sold "AS IS, WHERE IS": All equipment/property is sold "AS IS, WHERE IS" with no warranty or guarantees, expressed or implied, No operational assessments have been made by DPA Auctions on this item, it has been photographed ONLY.



#344 - 1977 Riley Beaird (DR158)

1977 Riley Beaird (DR158), 60,000 Nh3 storage tank, good data plate, National Board #51488, has steel stands, manway access. Notes: Item Location: Mount Vernon, IL 62864 Equipment Sold "AS IS, WHERE IS": All equipment/property is sold "AS IS, WHERE IS" with no warranty or guarantees, expressed or implied, No operational assessments have been made by DPA Auctions on this item, it has been photographed ONLY.



#345 - 1977 Riley Beaird (DR159)

1977 Riley Beaird (DR159), 60,000 Nh3 storage tank, good data plate, National Board #51498, has steel stands, manway access. Notes: Item Location: Mount Vernon, IL 62864 Equipment Sold "AS IS, WHERE IS": All equipment/property is sold "AS IS, WHERE IS" with no warranty or guarantees, expressed or implied, No operational assessments have been made by DPA Auctions on this item, it has been photographed ONLY.



#346 - Adamson-Stevenson Slinger (DR0161)

Adamson-Stevenson Slinger (DR0161), 50hp electric motor, explosion proof, throws grain 60' high, 360' deep. Notes: Item Location: Mount Vernon, IL 62864 Equipment Sold "AS IS, WHERE IS": All equipment/property is sold "AS IS, WHERE IS" with no warranty or guarantees, expressed or implied, No operational assessments have been made by DPA Auctions on this item, it has been photographed ONLY.



#347 - 1963 Flint Steel (DR160)

1963 Flint Steel (DR160), 30,000 vertical anhydrous storage tank, good data plate, dish bottom, access ladder, National Board #52729. Notes: Item Location: Mount Vernon, IL 62864 Equipment Sold "AS IS, WHERE IS": All equipment/property is sold "AS IS, WHERE IS" with no warranty or guarantees, expressed or implied, No operational assessments have been made by DPA Auctions on this item, it has been photographed ONLY.



#349 - 2013 Class 8-30 (DR0166)

2013 Class 8-30 (DR0166), 8 row 30" header, poly snouts, auto steer equipped. Notes: This head has literally only been used on 1000 acres. There is still paint on the sprockets. Left side shield is GONE. Item Location: Merville, IA 51039 Equipment Sold "AS IS, WHERE IS": All equipment/property is sold "AS IS, WHERE IS" with no warranty or guarantees, expressed or implied, No operational assessments have been made by DPA Auctions on this item, it has been photographed ONLY.



#350 - 1936 John Deere Model A Tractor (DR0162)

1936 John Deere Model A Tractor (DR0162) Super clean, ONE OWNER tractor, gas engine, runs and idles like a top, narrow front, on rubber, PTO. Notes: This tractor is from Willis Stading. Tractor runs like a top. This tractor has NEVER seen the stars or the moon. Item Location: Ponca, NE 68770 Equipment Sold "AS IS, WHERE IS": All equipment/property is sold "AS IS, WHERE IS" with no warranty or guarantees, expressed or implied, No operational assessments have been made by DPA Auctions on this item, it has been photographed ONLY.



#351 - 1957 John Deere 520 Tractor (DR0163)

1957 John Deere 520 Tractor (DR0163) repainted original tractor, gas engine runs like a new one, 6 speed transmission, narrow front, power steering, live power clutch, lights work, PTO, hydraulic outlets, 12.4-36 tires. Notes: This tractor is from the Willis Stading. Tractor runs like a top. This tractor has NEVER seen the stars or the moon. Item Location: Ponca, NE 68770 Equipment Sold "AS IS, WHERE IS": All equipment/property is sold "AS IS, WHERE IS" with no warranty or guarantees, expressed or implied, No operational assessments have been made by DPA Auctions on this item, it has been photographed ONLY.



#352 - 1981 GMC C7000 (RMC277 Unit 7842)

1981 GMC C7000 (RMC277 Unit 7842), gas engine, automatic transmission, single axle, 14' steel box & hoist, front hydraulic boom. Notes: Truck does run and drive. Item Location: Eunice, LA 70535 Equipment Sold "AS IS, WHERE IS": All equipment/property is sold "AS IS, WHERE IS" with no warranty or guarantees, expressed or implied, No operational assessments have been made by DPA Auctions on this item, it has been photographed ONLY.



#353 - 2010 Loftness Grain Bag Unloader (DL357)

2010 Loftness Grain Bag Unloader (DL357), Loftness GBU 10 - 10ft diameter grain bag system, 17" unload auger, 10" cross auger, 540 PTO, 8500 BPH. Notes: Equipment was purchased as a pair in 2010 and used twice - approx. 50 300' bags in 2010 & 35 300' bags in 2016. Item Location: Tynan, TX 78391 Equipment Sold "AS IS, WHERE IS": All equipment/property is sold "AS IS, WHERE IS" with no warranty or guarantees, expressed or implied, No operational assessments have been made by DPA Auctions on this item, it has been photographed ONLY.



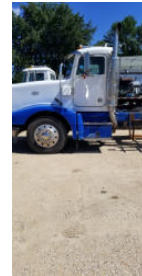
#354 - 2010 Loftness Grain Bag Loader (DL356)

2010 Loftness Grain Bag Loader (DL356), Loftness GBL 10 - 10ft diameter bags, 540 PTO, 20" auger, 30,000 BPH. Notes: Equipment was purchased as a pair in 2010 and used twice - approx. 50 300' bags in 2010 & 35 300' bags in 2016. Item Location: Tynan, TX 78391 Equipment Sold "AS IS, WHERE IS": All equipment/property is sold "AS IS, WHERE IS" with no warranty or guarantees, expressed or implied, No operational assessments have been made by DPA Auctions on this item, it has been photographed ONLY.



#355 - 1987 Peterbilt Truck (PZ0199)

1987 Peterbilt Truck (PZ0199), 3406B Cat diesel engine, 13 speed transmission, air conditioning, heat, Am/Fm radio, tandem axle, full screw, shows 873,150 miles. Notes: Item Location: Malden, IL 61337 Equipment Sold "AS IS, WHERE IS": All equipment/property is sold "AS IS, WHERE IS" with no warranty or guarantees, expressed or implied, No operational assessments have been made by DPA Auctions on this item, it has been photographed ONLY.



#356 - Adams Blender (DR0168)

Adams Blender (DR0168), 10 ton stainless steel dry fertilizer blender, stainless steel hopper, stainless steel discharge conveyor w/electric motor, 32' stainless steel load out conveyor w/elctric motor, blender is approximately a 2012. Notes: Was in use until new plant was built 2016. Item Location: Carson City, MI 48811 Equipment Sold "AS IS, WHERE IS": All equipment/property is sold "AS IS, WHERE IS" with no warranty or guarantees, expressed or implied, No operational assessments have been made by DPA Auctions on this item, it has been photographed ONLY.



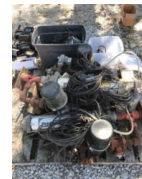
#357 - 2004 Terra Gator 9103 (ED624)

2004 Terra Gator 9103 (ED624), AG CHEM twin bin Soillection, 70 foot booms, VRT capable, Falcon 2 controller, CAT C10 engine, cab has heat, A/C needs Freon, AM/FM radio, rear tires 1050/50R32, front 73X44 00-32 nhs, 35% tread on both, used in spring of 2018, shows 8652.4 hours, shows 95684.1 miles. Notes: Item Location: Atlanta, IL 61723 Equipment Sold "AS IS, WHERE IS": All equipment/property is sold "AS IS, WHERE IS" with no warranty or guarantees, expressed or implied, No operational assessments have been made by DPA Auctions on this item, it has been photographed ONLY.



#358 - 3 Complete Dickey John NH3 Cooling Systems (AL508)

3 Complete Dickey John NH3 Cooling Systems (AL508), includes 8 Dickey John CCS 100 monitors, 4 Dickey John CMS monitors, 1 Dickey John land manager monitor, 2 extra servo valves, 2 extra flow meters, and extra wiring harness and Dickey John pressure sensor. Notes: Item Location: Farmersville, IL 62533 Equipment Sold "AS IS, WHERE IS": All equipment/property is sold "AS IS, WHERE IS" with no warranty or guarantees, expressed or implied, No operational assessments have been made by DPA Auctions on this item, it has been photographed ONLY.



#359 - Disc Sealers (AL509)

Disc Sealers (AL509), 21 disc sealers. Notes: Item Location: Farmersville, IL 62533 Equipment Sold "AS IS, WHERE IS": All equipment/property is sold "AS IS, WHERE IS" with no warranty or guarantees, expressed or implied, No operational assessments have been made by DPA Auctions on this item, it has been photographed ONLY.



#360 - Disc Sealers (AL510)

Disc Sealers (AL510), 24 disc sealers. Notes: Item Location: Farmersville, IL 62533 Equipment Sold "AS IS, WHERE IS": All equipment/property is sold "AS IS, WHERE IS" with no warranty or guarantees, expressed or implied, No operational assessments have been made by DPA Auctions on this item, it has been photographed ONLY.



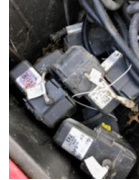
#361 - Yetter Disc Sealers (AL511)

Yetter Disc Sealers (AL511), yetter disc sealers with extra parts. Notes: Item Location: Farmersville, IL 62533 Equipment Sold "AS IS, WHERE IS": All equipment/property is sold "AS IS, WHERE IS" with no warranty or guarantees, expressed or implied, No operational assessments have been made by DPA Auctions on this item, it has been photographed ONLY.



#362 - Raven Sidekick Monitor With Extra Parts (AL512)

Raven Sidekick Monitor With Extra Parts (AL512), raven sidekick monitor with extra parts and 12 raven valves. Notes: Item Location: Farmersville, IL 62533 Equipment Sold "AS IS, WHERE IS": All equipment/property is sold "AS IS, WHERE IS" with no warranty or guarantees, expressed or implied, No operational assessments have been made by DPA Auctions on this item, it has been photographed ONLY.



#363 - 1999 Genie GS-2646 Electric Lift (DL361)

1999 Genie GS-2646 Electric Lift (DL361), 1999 Genie electric lift model GS-2646, 46" wide, 32" working height, good condition, drives and operates. Notes: Item Location: Springfield, MN 56087 Equipment Sold "AS IS, WHERE IS": All equipment/property is sold "AS IS, WHERE IS" with no warranty or guarantees, expressed or implied, No operational assessments have been made by DPA Auctions on this item, it has been photographed ONLY.



#364 - 2003 AG CHEM 1800 Gallon Tank (ED631)

2003 AG CHEM 1800 Gallon Tank (ED631), no leaks, dent in the back of the tank. Notes: Item Location: Melrose, IA 52569 Equipment Sold "AS IS, WHERE IS": All equipment/property is sold "AS IS, WHERE IS" with no warranty or guarantees, expressed or implied, No operational assessments have been made by DPA Auctions on this item, it has been photographed ONLY.



#365 - Willmar Wrangler Loader (ED630)

Willmar Wrangler Loader (ED630), John Deere engine. Notes: Item Location: Melrose, IA 52569 Equipment Sold "AS IS, WHERE IS": All equipment/property is sold "AS IS, WHERE IS" with no warranty or guarantees, expressed or implied, No operational assessments have been made by DPA Auctions on this item, it has been photographed ONLY.



#366 - 1999 GMC C 7500 Boom Truck (AL501)

1999 GMC C 7500 Boom Truck (AL501), 55' working height, high ranger Terex telect boom, pistol grip control and over center boom, 3 cylinder Perkins pony motor, \$2,000 worth of matting that is one year old, manual transmission, approximately \$4000 worth of saws which are Stihl, two ms 201 T's, one 880, one 660, one 460, various ropes. Notes: Item Location: Ladd, IL 61329 Equipment Sold "AS IS, WHERE IS": All equipment/property is sold "AS IS, WHERE IS" with no warranty or guarantees, expressed or implied, No operational assessments have been made by DPA Auctions on this item, it has been photographed ONLY.



#368 - 1997 Chevy C 3500 HD Chip Truck (AL506)

1997 Chevy C 3500 HD Chip Truck (AL506), 6.5 diesel engine, automatic transmission, runs and dumps good, shows 207519 miles. Notes: Item Location: Ladd, IL 61329 Equipment Sold "AS IS, WHERE IS": All equipment/property is sold "AS IS, WHERE IS" with no warranty or guarantees, expressed or implied, No operational assessments have been made by DPA Auctions on this item, it has been photographed ONLY.



#369 - 1984 GMC Sierra 3500 (AL502)

1984 GMC Sierra 3500 (AL502), dump truck, runs good and dumps good, shows 47,724 miles. Notes: Item Location: Ladd, IL 61329 Equipment Sold "AS IS, WHERE IS": All equipment/property is sold "AS IS, WHERE IS" with no warranty or guarantees, expressed or implied, No operational assessments have been made by DPA Auctions on this item, it has been photographed ONLY.



#370 - 1987 GMC Sierra 3500 (AL504)

1987 GMC Sierra 3500 (AL504), 350 horse power, manual transmission, runs and drives good. Notes: Item Location: Ladd, IL 61329 Equipment Sold "AS IS, WHERE IS": All equipment/property is sold "AS IS, WHERE IS" with no warranty or guarantees, expressed or implied, No operational assessments have been made by DPA Auctions on this item, it has been photographed ONLY.



#371 - 1974 Vermeer Stump Grinder (AL505)

1974 Vermeer Stump Grinder (AL505), has one year old 34 hp Vanguard motor, runs good. Notes: Item Location: Ladd, IL 61329 Equipment Sold "AS IS, WHERE IS": All equipment/property is sold "AS IS, WHERE IS" with no warranty or guarantees, expressed or implied, No operational assessments have been made by DPA Auctions on this item, it has been photographed ONLY.



#372A - 2002 Vermeer SC 252 Auto Stump Grinder with Trailer (AL514)

2002 Vermeer SC 252 Auto Stump Grinder with Trailer (AL514), gas engine, spare tire with trailer. Notes: Item Location: Ladd, IL 61329 Equipment Sold "AS IS, WHERE IS": All equipment/property is sold "AS IS, WHERE IS" with no warranty or guarantees, expressed or implied, No operational assessments have been made by DPA Auctions on this item, it has been photographed ONLY.



#373 - 2002 Ford F350 Pick up (DB021)

2002 Ford F350 Pick up (DB021), 7.3L diesel engine, automatic transmission, 4WD, am/fm radio, regular cab, shows 210485 mile. Notes: Vehicle has a PRIOR SALVAGE TITLE. Item Location: Maquoketa, IA 52060 Equipment Sold "AS IS, WHERE IS": All equipment/property is sold "AS IS, WHERE IS" with no warranty or guarantees, expressed or implied, No operational assessments have been made by DPA Auctions on this item, it has been photographed ONLY.



#374 - 1987 Dresser TD25G Dozer (AL476)

1987 Dresser TD25G Dozer (AL476), runs excellent, no blow by or leaks, 24" pads, blade tilt, 24" pad rails measure 5", undercarriage sprockets are nice, 13' blade, over height 11'9" tall and 13' wide and 25' long. Notes: Item Location: Starbuck, MN 56381 Equipment Sold "AS IS, WHERE IS": All equipment/property is sold "AS IS, WHERE IS" with no warranty or guarantees, expressed or implied, No operational assessments have been made by DPA Auctions on this item, it has been photographed ONLY.



#375 - 1977 Grove RT60S 18 Ton Capacity (AL477)

1977 Grove RT60S 18 Ton Capacity (AL477), 28' minimum boom length, 70' maximum boom length, 23' maximum jib length load block, anti-two-block, Cummins V504C engine, excellent condition. Notes: Item Location: Starbuck, MN 56381 Equipment Sold "AS IS, WHERE IS": All equipment/property is sold "AS IS, WHERE IS" with no warranty or guarantees, expressed or implied, No operational assessments have been made by DPA Auctions on this item, it has been photographed ONLY.



#376 - 1995 Detroit 150 KW Generator (AL478)

1995 Detroit 150 KW Generator (AL478), self contained with fuel tank, 3 phase, works great, shows 2814 hours. Notes: Item Location: Starbuck, MN 56381 Equipment Sold "AS IS, WHERE IS": All equipment/property is sold "AS IS, WHERE IS" with no warranty or guarantees, expressed or implied, No operational assessments have been made by DPA Auctions on this item, it has been photographed ONLY.



#377 - Chamberlin Mounted Tile Stringer Cart (AL473)

Chamberlin Mounted Tile Stringer Cart (AL473), used less than 10 times. Notes: Item Location: Starbuck, MN 56381 Equipment Sold "AS IS, WHERE IS": All equipment/property is sold "AS IS, WHERE IS" with no warranty or guarantees, expressed or implied, No operational assessments have been made by DPA Auctions on this item, it has been photographed ONLY.



#378 - Crary Tile Pro Stringer Trailer (AL474)

Crary Tile Pro Stringer Trailer (AL474) tandem axle, walking tandem electric over hyd operation. Notes: Item Location: Starbuck, MN 56381 Equipment Sold "AS IS, WHERE IS": All equipment/property is sold "AS IS, WHERE IS" with no warranty or guarantees, expressed or implied, No operational assessments have been made by DPA Auctions on this item, it has been photographed ONLY.



#379 - 2001 Mack CH613 E7-350 E-TECH LSR (AL475)

2001 Mack CH613 E7-350 E-TECH LSR (AL475), air ride suspension, 11R22.5 aluminum/steel wheels, fuller TRX14609B, 12 FA, 40 RA, 180 WB, 16 ton Tyler fertilizer tender body, 50 gallon steel fuel tank, shows 449,932 miles, shows 20,337 hours miles. Notes: Item Location: Starbuck, MN 56381 Equipment Sold "AS IS, WHERE IS": All equipment/property is sold "AS IS, WHERE IS" with no warranty or guarantees, expressed or implied, No operational assessments have been made by DPA Auctions on this item, it has been photographed ONLY.



#381 - Unverferth Belt Conveyor (ED627)

Unverferth Belt Conveyor (ED627), 8 inch tube X 21 foot belt conveyor. Notes: Item Location: Cobden, IL 62920 Equipment Sold "AS IS, WHERE IS": All equipment/property is sold "AS IS, WHERE IS" with no warranty or guarantees, expressed or implied, No operational assessments have been made by DPA Auctions on this item, it has been photographed ONLY.



#382 - Bayer On Demand RH200 Seed Treater (ED626)

Bayer On Demand RH200 Seed Treater (ED626). Notes: Item Location: Cobden, IL 62920 Equipment Sold "AS IS, WHERE IS": All equipment/property is sold "AS IS, WHERE IS" with no warranty or guarantees, expressed or implied, No operational assessments have been made by DPA Auctions on this item, it has been photographed ONLY.



#383 - 1974 Kenworth Wrecker Tow Truck (ED628)

1974 Kenworth Wrecker Tow Truck (ED628), Detroit engine, 8 speed, heat, 12R22.5 rear tires at 75% tread, 315/80/R22.5 front tires at 75%. Notes: Item Location: Cobden, IL 62920 Equipment Sold "AS IS, WHERE IS": All equipment/property is sold "AS IS, WHERE IS" with no warranty or guarantees, expressed or implied, No operational assessments have been made by DPA Auctions on this item, it has been photographed ONLY.



#385 - John Deere 635F 35' Hydraflex Platform (DL360)

John Deere 635F 35' Hydraflex Platform (DL360), John Deere 635F Hydraflex Platform with with row dividers, stubble lights, and Unverferth HT36 head cart. Notes: Item Location: Stockton, IA 52769 Equipment Sold "AS IS, WHERE IS": All equipment/property is sold "AS IS, WHERE IS" with no warranty or guarantees, expressed or implied, No operational assessments have been made by DPA Auctions on this item, it has been photographed ONLY.



#386 - 40 Yard Roll Off Box (KMK627)

40 Yard Roll Off Box (KMK627), 40 yard container, rear barn door, 9'6" x 26' 9", manufacture date 10-98. Notes: Item Location: Martinsburg, NE 68710 Equipment Sold "AS IS, WHERE IS": All equipment/property is sold "AS IS, WHERE IS" with no warranty or guarantees, expressed or implied, No operational assessments have been made by DPA Auctions on this item, it has been photographed ONLY.



#387 - 30 Yard Roll Off Box (KMK623)

30 Yard Roll Off Box (KMK623), Galbreath, 30 yard container, rear barn door. Notes: Item Location: Martinsburg, NE 68710 Equipment Sold "AS IS, WHERE IS": All equipment/property is sold "AS IS, WHERE IS" with no warranty or guarantees, expressed or implied, No operational assessments have been made by DPA Auctions on this item, it has been photographed ONLY.



#388 - 30 Yard Roll Off Box (KMK624)

30 Yard Roll Off Box (KMK624), 30 yard container, rear barn door, lot 599. Notes: Item Location: Martinsburg, NE 68710 Equipment Sold "AS IS, WHERE IS": All equipment/property is sold "AS IS, WHERE IS" with no warranty or guarantees, expressed or implied, No operational assessments have been made by DPA Auctions on this item, it has been photographed ONLY.



#389 - 40 Yard Roll Off Box (KMK625)

40 Yard Roll Off Box (KMK625), 40 yard container, rear barn door, 9'6" x 27'. Notes: Item Location: Martinsburg, NE 68710 Equipment Sold "AS IS, WHERE IS": All equipment/property is sold "AS IS, WHERE IS" with no warranty or guarantees, expressed or implied, No operational assessments have been made by DPA Auctions on this item, it has been photographed ONLY.



#390 - 30 Yard Roll Off Box (KMK619)

30 Yard Roll Off Box (KMK619), Beaver Built, 30 yard container, rear barn door, unit # 104, manufacture date 12-18-17. Notes: Item Location: Martinsburg, NE 68710 Equipment Sold "AS IS, WHERE IS": All equipment/property is sold "AS IS, WHERE IS" with no warranty or guarantees, expressed or implied, No operational assessments have been made by DPA Auctions on this item, it has been photographed ONLY.



#391 - 30 Yard Roll Off Box (KMK626)

30 Yard Roll Off Box (KMK626), 30 yard container, rear barn door. Notes: Item Location: Martinsburg, NE 68710 Equipment Sold "AS IS, WHERE IS": All equipment/property is sold "AS IS, WHERE IS" with no warranty or guarantees, expressed or implied, No operational assessments have been made by DPA Auctions on this item, it has been photographed ONLY.



#392 - 30 Yard Roll Off Box (KMK620)

30 Yard Roll Off Box (KMK620), Beaver Built, 30 yard container, rear barn door, unit # 108, manufacture date 6-21-18. Notes: Item Location: Martinsburg, NE 68710 Equipment Sold "AS IS, WHERE IS": All equipment/property is sold "AS IS, WHERE IS" with no warranty or guarantees, expressed or implied, No operational assessments have been made by DPA Auctions on this item, it has been photographed ONLY.



#393 - 40 Yard Roll Off Box (DR0164)

40 Yard Roll Off Box (DR0164), Beaver Built, 40 yard container, rear barn door, 24' 8" X 72" Sides, unit # 101. Notes: Item Location: Martinsburg, NE 68710 Equipment Sold "AS IS, WHERE IS": All equipment/property is sold "AS IS, WHERE IS" with no warranty or guarantees, expressed or implied, No operational assessments have been made by DPA Auctions on this item, it has been photographed ONLY.



#394 - 30 Yard Roll Off Box (KMK621)

30 Yard Roll Off Box (KMK621), Beaver Built, 30 yard container, rear barn door, unit # 109, manufacture date 6-27-18. Notes: Item Location: Martinsburg, NE 68710 Equipment Sold "AS IS, WHERE IS": All equipment/property is sold "AS IS, WHERE IS" with no warranty or guarantees, expressed or implied, No operational assessments have been made by DPA Auctions on this item, it has been photographed ONLY.



#395 - 30 Yard Roll Off Box (DR0165)

30 Yard Roll Off Box (DR0165), Beaver Built, 30 yard container, rear barn door, 22' 8" X 60" sides, unit # 101, manufacture date 7-20-16. Notes: Item Location: Martinsburg, NE 68710 Equipment Sold "AS IS, WHERE IS": All equipment/property is sold "AS IS, WHERE IS" with no warranty or guarantees, expressed or implied, No operational assessments have been made by DPA Auctions on this item, it has been photographed ONLY.



#396 - 30 Yard Roll Off Box (KMK622)

30 Yard Roll Off Box (KMK622), Beaver Built, 30 yard container, rear barn door, unit # 105, manufacture date 5-1-18. Notes: Item Location: Martinsburg, NE 68710 Equipment Sold "AS IS, WHERE IS": All equipment/property is sold "AS IS, WHERE IS" with no warranty or guarantees, expressed or implied, No operational assessments have been made by DPA Auctions on this item, it has been photographed ONLY.



#397 - 30 Yard Roll Off Box (KMK613)

30 Yard Roll Off Box (KMK613), Beaver Built, 30 yard container, rear barn door, unit # 107, manufacture date 5-30-18. Notes: Item Location: Martinsburg, NE 68710 Equipment Sold "AS IS, WHERE IS": All equipment/property is sold "AS IS, WHERE IS" with no warranty or guarantees, expressed or implied, No operational assessments have been made by DPA Auctions on this item, it has been photographed ONLY.



#398 - 30 Yard Roll Off Box (KMK618)

30 Yard Roll Off Box (KMK618), Beaver Built, 30 yard container, rear barn door, unit # 102, manufacture date 7-20-16. Notes: Item Location: Martinsburg, NE 68710 Equipment Sold "AS IS, WHERE IS": All equipment/property is sold "AS IS, WHERE IS" with no warranty or guarantees, expressed or implied, No operational assessments have been made by DPA Auctions on this item, it has been photographed ONLY.



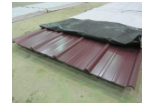
#399 - 30 Yard Roll Off Box (KMK614)

30 Yard Roll Off Box (KMK614), Beaver Built, 30 yard container, rear barn door, unit # 108, manufacture date 5-30-18. Notes: Item Location: Martinsburg, NE 68710 Equipment Sold "AS IS, WHERE IS": All equipment/property is sold "AS IS, WHERE IS" with no warranty or guarantees, expressed or implied, No operational assessments have been made by DPA Auctions on this item, it has been photographed ONLY.



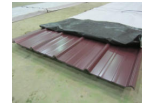
#400 - Metal Siding/Roofing (DR9811)

Metal Siding/Roofing (DR9811), NEW UNUSED (30) sheets, American made, Burgandy color, 16' long X 36" overlap coverage, Premium Panel Plus style, 29 gauge. ALWAYS stored inside. Meets all USA building material engineering codes for Tested Tolerances for wind & snow. USA stamped seal of approval documentation on all products. Notes: Loadout IS available with flexible appointments. Can also offer hardware, trim, corners at wholesale prices Item Location: Monroe, NE 68647 Equipment Sold "AS IS, WHERE IS": All equipment/property is sold "AS IS, WHERE IS" with no warranty or guarantees, expressed or implied, No operational assessments have been made by DPA Auctions on this item, it has been photographed ONLY.



#401 - Metal Siding/Roofing (DR9812)

Metal Siding/Roofing (DR9812), NEW UNUSED (25) sheets, American made, Burgandy color, 16' long X 36" overlap coverage, Premium Panel Plus style, 29 gauge. ALWAYS stored inside. Meets all USA building material engineering codes for Tested Tolerances for wind & snow. USA stamped seal of approval documentation on all products. Notes: Loadout IS available with flexible appointments. Can also offer hardware, trim, corners at wholesale prices Item Location: Monroe, NE 68647 Equipment Sold "AS IS, WHERE IS": All equipment/property is sold "AS IS, WHERE IS" with no warranty or guarantees, expressed or implied, No operational assessments have been made by DPA Auctions on this item, it has been photographed ONLY.



#402 - Metal Siding/Roofing (DR9813)

Metal Siding/Roofing (DR9813), NEW UNUSED (30) sheets, American made, Burnish Slate color, 16' long X 36" overlap coverage, Premium Panel Plus style, 29 gauge. ALWAYS stored inside. Meets all USA building material engineering codes for Tested Tolerances for wind & snow. USA stamped seal of approval documentation on all products. Notes: Loadout IS available with flexible appointments. Can also offer hardware, trim, corners at wholesale prices Item Location: Monroe, NE 68647 Equipment Sold "AS IS, WHERE IS": All equipment/property is sold "AS IS, WHERE IS" with no warranty or guarantees, expressed or implied, No operational assessments have been made by DPA Auctions on this item, it has been photographed ONLY.



#403 - Metal Siding/Roofing (DR9814)

Metal Siding/Roofing (DR9814), NEW UNUSED (30) sheets, American made, Burnish Slate color, 16' long X 36" overlap coverage, Premium Panel Plus style, 29 gauge. ALWAYS stored inside. Meets all USA building material engineering codes for Tested Tolerances for wind & snow. USA stamped seal of approval documentation on all products. Notes: Loadout IS available with flexible appointments. Can also offer hardware, trim, corners at wholesale prices Item Location: Monroe, NE 68647 Equipment Sold "AS IS, WHERE IS": All equipment/property is sold "AS IS, WHERE IS" with no warranty or guarantees, expressed or implied, No operational assessments have been made by DPA Auctions on this item, it has been photographed ONLY.



#404 - Metal Siding/Roofing (DR9815)

Metal Siding/Roofing (DR9815), NEW UNUSED (30) sheets, American made, Burnish Slate color, 16' long X 36" overlap coverage, Premium Panel Plus style, 29 gauge. ALWAYS stored inside. Meets all USA building material engineering codes for Tested Tolerances for wind & snow. USA stamped seal of approval documentation on all products. Notes: Loadout IS available with flexible appointments. Can also offer hardware, trim, corners at wholesale prices Item Location: Monroe, NE 68647 Equipment Sold "AS IS, WHERE IS": All equipment/property is sold "AS IS, WHERE IS" with no warranty or guarantees, expressed or implied, No operational assessments have been made by DPA Auctions on this item, it has been photographed ONLY.



#405 - Metal Siding/Roofing (DR9816)

Metal Siding/Roofing (DR9816), NEW UNUSED (30) sheets, American made, Burnish Slate color, 16' long X 36" overlap coverage, Premium Panel Plus style, 29 gauge. ALWAYS stored inside. Meets all USA building material engineering codes for Tested Tolerances for wind & snow. USA stamped seal of approval documentation on all products. Notes: Loadout IS available with flexible appointments. Can also offer hardware, trim, corners at wholesale prices Item Location: Monroe, NE 68647 Equipment Sold "AS IS, WHERE IS": All equipment/property is sold "AS IS, WHERE IS" with no warranty or guarantees, expressed or implied, No operational assessments have been made by DPA Auctions on this item, it has been photographed ONLY.



#406 - Metal Siding/Roofing (DR9817)

Metal Siding/Roofing (DR9817), NEW UNUSED (30) sheets, American made, Burnish Slate color, 16' long X 36" overlap coverage, Premium Panel Plus style, 29 gauge. ALWAYS stored inside. Meets all USA building material engineering codes for Tested Tolerances for wind & snow. USA stamped seal of approval documentation on all products. Notes: Loadout IS available with flexible appointments. Can also offer hardware, trim, corners at wholesale prices Item Location: Monroe, NE 68647 Equipment Sold "AS IS, WHERE IS": All equipment/property is sold "AS IS, WHERE IS" with no warranty or guarantees, expressed or implied, No operational assessments have been made by DPA Auctions on this item, it has been photographed ONLY.

