

Auction catalog

Title	Online Auction - July 24, 2018 10AM Central
Description	The following line of Fertilizer, Farm Implement, Truck, Trailer & Construction Equipment will be sold online with the bidding ending on July 24, 2018. Location of the equipment is given. Bidding within the last minute before the closing of a lot will extend the bidding time by an additional minute. Be prepared to bid accordingly. For more information, contact Del Peterson & Associates: 419 West Judy Drive Fremont NE, 68025 Phone: 800-492-9090 or 402-721-4388 Fax: 402-721-4583 E-mail: auction@delpeterson.com
Date	Tue, Jul 24, 2018
Starts at	10:00 AM
Address	PO Box 654, Fremont, NE 68026 USA
Categories	

#1 - Tandem Gear (PZ9257)

Tandem Gear (PZ9257), tandem axle gear, 12.5L-15 flotation tires. Notes: Item Location: Hampton, IA 50441 Equipment Sold "AS IS, WHERE IS": All equipment/property is sold "AS IS, WHERE IS" with no warranty or guarantees, expressed or implied, No operational assessments have been made by DPA Auctions on this item, it has been photographed ONLY.



#2 - Running Gear (PZ9258)

Running Gear (PZ9258), 5th wheel running gear, 11L-15 flotation tires. Notes: Item Location: Hampton, IA 50441 Equipment Sold "AS IS, WHERE IS": All equipment/property is sold "AS IS, WHERE IS" with no warranty or guarantees, expressed or implied, No operational assessments have been made by DPA Auctions on this item, it has been photographed ONLY.



#3 - Running Gear (PZ9259)

Running Gear (PZ9259), 5th wheel running gear, 12.5L-15 flotation tires. Notes: Item Location: Hampton, IA 50441 Equipment Sold "AS IS, WHERE IS": All equipment/property is sold "AS IS, WHERE IS" with no warranty or guarantees, expressed or implied, No operational assessments have been made by DPA Auctions on this item, it has been photographed ONLY.



#4 - Running Gear (PZ9260)

Running Gear (PZ9260), 5th wheel running gear, 12.5L-15 flotation tires. Notes: Item Location: Hampton, IA 50441 Equipment Sold "AS IS, WHERE IS": All equipment/property is sold "AS IS, WHERE IS" with no warranty or guarantees, expressed or implied, No operational assessments have been made by DPA Auctions on this item, it has been photographed ONLY.



#5 - Running Gear (PZ9261)

Running Gear (PZ9261), 5th wheel running gear, 12.5L-15 flotation tires. Notes: Item Location: Hampton, IA 50441 Equipment Sold "AS IS, WHERE IS": All equipment/property is sold "AS IS, WHERE IS" with no warranty or guarantees, expressed or implied, No operational assessments have been made by DPA Auctions on this item, it has been photographed ONLY.



#6 - Running Gear (PZ9262)

Running Gear (PZ9262), auto steer wheel running gear, 9.5L-15 tires. Notes: Some tires are flat. Item Location: Hampton, IA 50441 Equipment Sold "AS IS, WHERE IS": All equipment/property is sold "AS IS, WHERE IS" with no warranty or guarantees, expressed or implied, No operational assessments have been made by DPA Auctions on this item, it has been photographed ONLY.



#7 - Tandem Gear (PZ9263)

Tandem Gear (PZ9263), tandem axle gear, 7.00-15 tires. Notes: Item Location: Hampton, IA 50441 Equipment Sold "AS IS, WHERE IS": All equipment/property is sold "AS IS, WHERE IS" with no warranty or guarantees, expressed or implied, No operational assessments have been made by DPA Auctions on this item, it has been photographed ONLY.



#8 - Running Gear (PZ9264)

Running Gear (PZ9264), 5th wheel running gear, no tires. Notes: Item Location: Hampton, IA 50441 Equipment Sold "AS IS, WHERE IS": All equipment/property is sold "AS IS, WHERE IS" with no warranty or guarantees, expressed or implied, No operational assessments have been made by DPA Auctions on this item, it has been photographed ONLY.



#9 - Running Gear (PZ9265)

Running Gear (PZ9265), 5th wheel running gear, no tires. Notes: Item Location: Hampton, IA 50441 Equipment Sold "AS IS, WHERE IS": All equipment/property is sold "AS IS, WHERE IS" with no warranty or guarantees, expressed or implied, No operational assessments have been made by DPA Auctions on this item, it has been photographed ONLY.



#10 - Running Gear (PZ9266)

Running Gear (PZ9266), 5th wheel running gear, no tires. Notes: Item Location: Hampton, IA 50441 Equipment Sold "AS IS, WHERE IS": All equipment/property is sold "AS IS, WHERE IS" with no warranty or guarantees, expressed or implied, No operational assessments have been made by DPA Auctions on this item, it has been photographed ONLY.



#11 - Running Gear (PZ9267)

Running Gear (PZ9267), 5th wheel running gear, no tires. Notes: Item Location: Hampton, IA 50441 Equipment Sold "AS IS, WHERE IS": All equipment/property is sold "AS IS, WHERE IS" with no warranty or guarantees, expressed or implied, No operational assessments have been made by DPA Auctions on this item, it has been photographed ONLY.



#12 - Running Gear (PZ9312)

Running Gear (PZ9312), auto steer running gear, 11L-15 flotation tires. Notes: Item Location: Osage, IA 50461 Equipment Sold "AS IS, WHERE IS": All equipment/property is sold "AS IS, WHERE IS" with no warranty or guarantees, expressed or implied, No operational assessments have been made by DPA Auctions on this item, it has been photographed ONLY.



#13 - NH3 Tool Bar (PZ9309, Unit 3515A)

NH3 Tool Bar (PZ9309, Unit 3515A), 11 knife NH3 pull type tool bar, hydraulic wings, floatation tires, rear hitch. Notes: Parts missing. Item Location: Nora Springs, IA 50458 Equipment Sold "AS IS, WHERE IS": All equipment/property is sold "AS IS, WHERE IS" with no warranty or guarantees, expressed or implied, No operational assessments have been made by DPA Auctions on this item, it has been photographed ONLY.



#14 - NH3 Tool Bar (PZ9310, Unit 3513A)

NH3 Tool Bar (PZ9310, Unit 3513A), 12 knife NH3 pull type tool bar, hydraulic wings, floatation tires, rear hitch. Notes: Parts missing. Item Location: Nora Springs, IA 50458 Equipment Sold "AS IS, WHERE IS": All equipment/property is sold "AS IS, WHERE IS" with no warranty or guarantees, expressed or implied, No operational assessments have been made by DPA Auctions on this item, it has been photographed ONLY.



#15 - Shuttle Tanks (PZ9307)

Shuttle Tanks (PZ9307), 4 - 60 gallon shuttle tanks. Notes: Item Location: Nora Springs, IA 50458 Equipment Sold "AS IS, WHERE IS": All equipment/property is sold "AS IS, WHERE IS" with no warranty or guarantees, expressed or implied, No operational assessments have been made by DPA Auctions on this item, it has been photographed ONLY.



#16 - 1989 Ford L8000 Dry Tender Truck (PZ9308, Unit 198)

1989 Ford L8000 Dry Tender Truck (PZ9308, Unit 198), diesel engine, 5 speed transmission, 2 speed rear end, heat, Am/Fm radio, single axle, Tyler 10 ton dry tender box, rear discharge auger, all hydraulic, 11R22.5 tires. Notes: Item Location: Nora Springs, IA 50458 Equipment Sold "AS IS, WHERE IS": All equipment/property is sold "AS IS, WHERE IS" with no warranty or guarantees, expressed or implied, No operational assessments have been made by DPA Auctions on this item, it has been photographed ONLY.



#17 - DMI Tool Bar (PZ9311, Unit 3504)

DMI Tool Bar (PZ9311, Unit 3504), DMI 5 knife NH3 pull type tool bar, hydraulic wings, 12.5L-15 flotation tires, rear hitch. Notes: Parts missing. Item Location: Osage, IA 50461 Equipment Sold "AS IS, WHERE IS": All equipment/property is sold "AS IS, WHERE IS" with no warranty or guarantees, expressed or implied, No operational assessments have been made by DPA Auctions on this item, it has been photographed ONLY.



#18 - Kay Fuel Tank (PZ9313)

Kay Fuel Tank (PZ9313) Kay 500 gallon fuel tank. Notes: Item Location: Osage, IA 50461 Equipment Sold "AS IS, WHERE IS": All equipment/property is sold "AS IS, WHERE IS" with no warranty or guarantees, expressed or implied, No operational assessments have been made by DPA Auctions on this item, it has been photographed ONLY.



#19 - Chelsea Pump (PZ9314)

Chelsea Pump (PZ9314), Chelsea pump. Notes: Item Location: Osage, IA 50461 Equipment Sold "AS IS, WHERE IS": All equipment/property is sold "AS IS, WHERE IS" with no warranty or guarantees, expressed or implied, No operational assessments have been made by DPA Auctions on this item, it has been photographed ONLY.



#20 - 1968 Trinity Storage Tank (PZ9269)

1968 Trinity Storage Tank (PZ9269), 1968 Trinity 18,000 NH3 storage tank, Magnetel tank volume gauge, steel saddles. Notes: This storage tank must be removed by October 31st, 2018 with NO exceptions. Dismantle, removal and transportation is at the expense, risk and liability of the buyer. Item Location: Hampton, IA 50441 Equipment Sold "AS IS, WHERE IS": All equipment/property is sold "AS IS, WHERE IS" with no warranty or guarantees, expressed or implied, No operational assessments have been made by DPA Auctions on this item, it has been photographed ONLY.



#21 - Dry Tender Box (PZ9268)

Dry Tender Box (PZ9268), 8 ton stainless steel dry tender box, rear discharge auger, roll over tarp. Notes: Item Location: Hampton, IA 50441 Equipment Sold "AS IS, WHERE IS": All equipment/property is sold "AS IS, WHERE IS" with no warranty or guarantees, expressed or implied, No operational assessments have been made by DPA Auctions on this item, it has been photographed ONLY.



#22 - Liquid Nurse Tank (PZ9332, Unit 2)

Liquid Nurse Tank (PZ9332, Unit 2), 1700 gallon poly liquid nurse tank, tandem axle gear, 30 gallon poly inductor, 12.5L-15SL flotation tires. Notes: Motor & pump do not work. Item Location: De Witt, IA 52742 Equipment Sold "AS IS, WHERE IS": All equipment/property is sold "AS IS, WHERE IS" with no warranty or guarantees, expressed or implied, No operational assessments have been made by DPA Auctions on this item, it has been photographed ONLY.



#23 - Liquid Nurse Tank (PZ9333, Unit 3)

Liquid Nurse Tank (PZ9333, Unit 3), 1025 gallon poly liquid nurse tank, tandem axle gear, 16.5L - 16.1 flotation tires. Notes: Motor & pump do not work. Item Location: De Witt, IA 52742 Equipment Sold "AS IS, WHERE IS": All equipment/property is sold "AS IS, WHERE IS" with no warranty or guarantees, expressed or implied, No operational assessments have been made by DPA Auctions on this item, it has been photographed ONLY.



#24 - Parker Weigh Wagon (PZ9331)

Parker Weigh Wagon (PZ9331), Parker model 1555 weigh wagon, Vanguard 18 hp electric start gas engine, side discharge auger, all hydraulic, Weigh Tronix model 715 digital readout, hand control, roll over tarp, single axle, 12-16.5LT tires. Notes: May have problem with hydraulics for auger. Please contact seller for more information. Item Location: De Witt, IA 52742 Equipment Sold "AS IS, WHERE IS": All equipment/property is sold "AS IS, WHERE IS" with no warranty or guarantees, expressed or implied, No operational assessments have been made by DPA Auctions on this item, it has been photographed ONLY.



#25 - Seed Tender (PZ9337, Unit T471)

Seed Tender (PZ9337, Unit T471), Seed tender, 2 compartment, hydraulic auger, auto steer running gear, 12.5L-15 flotation tires. Notes: Item Location: De Witt, IA 52742 Equipment Sold "AS IS, WHERE IS": All equipment/property is sold "AS IS, WHERE IS" with no warranty or guarantees, expressed or implied, No operational assessments have been made by DPA Auctions on this item, it has been photographed ONLY.



#27 - 2009 IHC 4400 LP Truck (PZ9278, Unit 166)

2009 IHC 4400 LP Truck (PZ9278, Unit 166), Maxxforce DT diesel engine, Allison automatic transmission, air conditioning, heat, Am/Fm radio, cruise control, single axle, 1994 Kleespie 3000 gallon LP tank, National Board #115, S/N H4115, LectroCount LCR-II meter, LC liquid controls, electric hose reel w/hose, 11R22.5 tires, shows 176,211 miles, 12,021 hours. Notes: Item Location: Waterloo, IA 50703 Equipment Sold "AS IS, WHERE IS": All equipment/property is sold "AS IS, WHERE IS" with no warranty or guarantees, expressed or implied, No operational assessments have been made by DPA Auctions on this item, it has been photographed ONLY.



#29 - Running Gear (PZ9320)

Running Gear (PZ9320), 5th wheel running gear, 11L-15 flotation tires. Notes: Some bad tires. Item Location: Sumner, IA 50674 Equipment Sold "AS IS, WHERE IS": All equipment/property is sold "AS IS, WHERE IS" with no warranty or guarantees, expressed or implied, No operational assessments have been made by DPA Auctions on this item, it has been photographed ONLY.



#30 - Running Gear (PZ9321)

Running Gear (PZ9321), 5th wheel running gear, 11L-15 flotation tires. Notes: Some bad tires. Item Location: Sumner, IA 50674 Equipment Sold "AS IS, WHERE IS": All equipment/property is sold "AS IS, WHERE IS" with no warranty or guarantees, expressed or implied, No operational assessments have been made by DPA Auctions on this item, it has been photographed ONLY.



#31 - Running Gear (PZ9322)

Running Gear (PZ9322), 5th wheel running gear, 11L-15 flotation tires. Notes: Some bad tires. Item Location: Sumner, IA 50674 Equipment Sold "AS IS, WHERE IS": All equipment/property is sold "AS IS, WHERE IS" with no warranty or guarantees, expressed or implied, No operational assessments have been made by DPA Auctions on this item, it has been photographed ONLY.



#32 - Pumps (PZ9323)

Pumps (PZ9323), 2 - PTO pumps. Notes: Item Location: Hazleton, IA 50641 Equipment Sold "AS IS, WHERE IS": All equipment/property is sold "AS IS, WHERE IS" with no warranty or guarantees, expressed or implied, No operational assessments have been made by DPA Auctions on this item, it has been photographed ONLY.



#33 - Unverferth Weigh Wagon (PZ9324)

Unverferth Weigh Wagon (PZ9324), Unverferth weigh wagon, Briggs & Stratton 18 hp electric start gas engine, side discharge auger, all hydraulic, Digi-Star EZ 150 digital readout, roll over tarp, single axle, 12-16.5 tires. Notes: Item Location: Hazleton, IA 50641 Equipment Sold "AS IS, WHERE IS": All equipment/property is sold "AS IS, WHERE IS" with no warranty or guarantees, expressed or implied, No operational assessments have been made by DPA Auctions on this item, it has been photographed ONLY.



#34 - 1990 Ford L8000 Truck (PZ9279, Unit 871)

1990 Ford L8000 Truck (PZ9279, Unit 871), diesel engine, 5 speed transmission, 2 speed rear end, heat, Am/Fm cassette radio, single axle, 11R22.5 tires. Notes: Item Location: Waterloo, IA 50703 Equipment Sold "AS IS, WHERE IS": All equipment/property is sold "AS IS, WHERE IS" with no warranty or guarantees, expressed or implied, No operational assessments have been made by DPA Auctions on this item, it has been photographed ONLY.



#35 - 1980 John Deere 4440 Tractor (PZ9281, Unit 670)

1980 John Deere 4440 Tractor (PZ9281, Unit 670), John Deere diesel engine, Quad range transmission, air conditioning, heat, Am/Fm radio, PTO, 3-point, 3 port hydraulics, 10.00-16 front tires, 18.4-38 rear tires. Notes: Bad hydraulics, tractor will hardly move. Please contact seller for more information. Item Location: Dewar, IA 50623 Equipment Sold "AS IS, WHERE IS": All equipment/property is sold "AS IS, WHERE IS" with no warranty or guarantees, expressed or implied, No operational assessments have been made by DPA Auctions on this item, it has been photographed ONLY.



#36 - 2002 Sterling Dry Tender Truck (PZ9318, Unit 34)

2002 Sterling Dry Tender Truck (PZ9318, Unit 34), Cat 3126 diesel engine, 9 speed transmission, air conditioning, heat, Am/Fm radio, cruise control, tandem axle, full screw, air ride suspension, Willmar 16 ton dry tender box, side discharge auger, all hydraulic, roll over tarp, 315/80R22.5 front tires, shows 267,018 miles, 15,395 hours. Notes: Crack in windshield, drivers side door does not open. Please contact seller for working condition of this truck. Item Location: West Union, IA 52175 Equipment Sold "AS IS, WHERE IS": All equipment/property is sold "AS IS, WHERE IS" with no warranty or guarantees, expressed or implied, No operational assessments have been made by DPA Auctions on this item, it has been photographed ONLY.



#37 - 1998 Terra Gator 8103 Dry Floater (NP6799)

1998 Terra Gator 8103 Dry Floater (NP6799), John Deere diesel engine (S/N RG6081H028788), Terra Shift transmission, heat, air conditioning, Am/Fm radio, Simonsen KB712SSR stainless steel dry spreader box (S/N 10033247), dual spinners, hydraulic, 1000/50R25 tires (deep tread), Raven Viper Pro, shows 46,037 miles, shows 4,866 hours. Notes: Item Location: West Point, NE 68788 Equipment Sold "AS IS, WHERE IS": All equipment/property is sold "AS IS, WHERE IS" with no warranty or guarantees, expressed or implied, No operational assessments have been made by DPA Auctions on this item, it has been photographed ONLY.



#38 - Silver Sweet Grain Leg (NP6796)

Silver Sweet Grain Leg (NP6796), Model KING II 120FT, 120' leg, 5,000 BPH rating, double trunk, 10" x 20" leg size, metal cups, safety ladders, top support structure, 4-way distributor, downspouting, Baldor 3 phase 20HP electric ground motor. Notes: This item must be dismantled and removed by September 15, 2018, NO EXCEPTIONS. Proof of insurance must be provided before the dismantle process can begin. Dismantle, removal and transportation is at the expense, risk and liability of the buyer. Item Location: Tekamah, NE 68061 Equipment Sold "AS IS, WHERE IS": All equipment/property is sold "AS IS, WHERE IS" with no warranty or guarantees, expressed or implied, No operational assessments have been made by DPA Auctions on this item, it has been photographed ONLY.



#39 - Grain Bin Super Structure (NP6797)

Grain Bin Super Structure (NP6797), 3,000 bushel bin, 4 leg steel super structure, 8" x 8" beams. Notes: This item must be dismantled and removed by September 15, 2018, NO EXCEPTIONS. Proof of insurance must be provided before the dismantle process can begin. Dismantle, removal and transportation is at the expense, risk and liability of the buyer. Item Location: Tekamah, NE 68061 Equipment Sold "AS IS, WHERE IS": All equipment/property is sold "AS IS, WHERE IS" with no warranty or guarantees, expressed or implied, No operational assessments have been made by DPA Auctions on this item, it has been photographed ONLY.



#40 - Friesen Hopper Bin Super Structure (NP6798)

Friesen Hopper Bin Super Structure (NP6798), 3,000 bushel bin, 4 leg steel super structure, 8" x 10" beams. Notes: This item must be dismantled and removed by September 15, 2018, NO EXCEPTIONS. Proof of insurance must be provided before the dismantle process can begin. Dismantle, removal and transportation is at the expense, risk and liability of the buyer. Item Location: Tekamah, NE 68061 Equipment Sold "AS IS, WHERE IS": All equipment/property is sold "AS IS, WHERE IS" with no warranty or guarantees, expressed or implied, No operational assessments have been made by DPA Auctions on this item, it has been photographed ONLY.



#41 - Quickstak Palletizer (KMK529)

Quickstak Palletizer (KMK529), Quickstak palletizer machine, Quickstak palletizer machine incorporates an air flotation table so that even a 110 lb. bag can be handled with little effort, single operator can palletize bags at 20 bags per minute rate, depending on size and number of bags per row, manual adjustment guides around the flotation table ensure a square pattern for virtually any pallet size. Notes: Item Location: Hazen, AR 72064 Equipment Sold "AS IS, WHERE IS": All equipment/property is sold "AS IS, WHERE IS" with no warranty or guarantees, expressed or implied, No operational assessments have been made by DPA Auctions on this item, it has been photographed ONLY.



#42 - Complete 6" Air System (PZ9114)

Complete 6" Air System (PZ9114), Complete 6" air system, 1 - 75hp blower 3ph motor (4 years old), 1 - Tight Tolerances air lock 1hp, 3 - 6" air cyclones, air intake air cleaner, 6" bin D.C.M bin selector 6 holes, 25 - 6" pipe couplers misc pipe trusses, 250' of 6" air pipe. Notes: Purchased New, farmer owned, excellent shape, used last fall of 2017, removed from bin site on May of 2018. Ready to ship. Item Location: Kanawha, IA 50447 Equipment Sold "AS IS, WHERE IS": All equipment/property is sold "AS IS, WHERE IS" with no warranty or guarantees, expressed or implied, No operational assessments have been made by DPA Auctions on this item, it has been photographed ONLY.



#43 - 1980 Progress Petroleum Tank (PZ9412)

1980 Progress Petroleum Tank (PZ9412), 1980 Progress model A90B 4000 gallon aluminum petroleum tank, 2 - Registers, 2 hose electric hose reels with hose. Notes: Item Location: Yarmouth, IA 52660 Equipment Sold "AS IS, WHERE IS": All equipment/property is sold "AS IS, WHERE IS" with no warranty or guarantees, expressed or implied, No operational assessments have been made by DPA Auctions on this item, it has been photographed ONLY.



#44 - 1986 Heil Transport Trailer (PZ9410)

1986 Heil Transport Trailer (PZ9410), 1986 Heil 9450 gallon 4 compartment (3000-1500-2000-2950) aluminum petroleum transport trailer, Blackmer pump, tandem axle, spring suspension, 11R22.5 tires, aluminum rims. Notes: Item Location: Yarmouth, IA 52660 Equipment Sold "AS IS, WHERE IS": All equipment/property is sold "AS IS, WHERE IS" with no warranty or guarantees, expressed or implied, No operational assessments have been made by DPA Auctions on this item, it has been photographed ONLY.



#45 - 2002 Mack CH613 Truck (PZ9398, Unit 304)

2002 Mack CH613 Truck (PZ9398, Unit 304), Mack E7-460 diesel engine, 10 speed transmission, air conditioning, heat, Am/Fm CD stereo, cruise brake, engine brake, tandem axle, full screw, air ride suspension, 5th wheel, 11R22.5 tires. Notes: Item Location: Yarmouth, IA 52660 Equipment Sold "AS IS, WHERE IS": All equipment/property is sold "AS IS, WHERE IS" with no warranty or guarantees, expressed or implied, No operational assessments have been made by DPA Auctions on this item, it has been photographed ONLY.



#46 - 2000 Mack CH613 Truck (PZ9399)

2000 Mack CH613 Truck (PZ9399), Mack E7-400 diesel engine, 10 speed transmission, air conditioning, heat, Am/Fm cassette radio, cruise control, engine brake, tandem axle, full screw, air ride suspension, 5th wheel, 11R22.5 tires. Notes: Item Location: Yarmouth, IA 52660 Equipment Sold "AS IS, WHERE IS": All equipment/property is sold "AS IS, WHERE IS" with no warranty or guarantees, expressed or implied, No operational assessments have been made by DPA Auctions on this item, it has been photographed ONLY.



#47 - 1988 Mack MH6122 Truck (PZ9400, Unit 2-032)

1988 Mack MH6122 Truck (PZ9400, Unit 2-032), 4x4, diesel engine, Maxitorque 10 speed splitter transmission, air conditioning, heat, single axle, 5th wheel, 295/75R22.5 tires. Notes: Needs batteries. Item Location: Yarmouth, IA 52660 Equipment Sold "AS IS, WHERE IS": All equipment/property is sold "AS IS, WHERE IS" with no warranty or guarantees, expressed or implied, No operational assessments have been made by DPA Auctions on this item, it has been photographed ONLY.



#48 - 1988 Mack R688ST Econodyne Truck (PZ9401)

1988 Mack R688ST Econodyne Truck (PZ9401), Mack E6-350 diesel engine, 10 speed transmission, air conditioning, heat, Am/Fm radio, tandem axle, full screw, 5th wheel, wet kit, 11R22.5 tires. Notes: Needs batteries, flat tire. Item Location: Yarmouth, IA 52660 Equipment Sold "AS IS, WHERE IS": All equipment/property is sold "AS IS, WHERE IS" with no warranty or guarantees, expressed or implied, No operational assessments have been made by DPA Auctions on this item, it has been photographed ONLY.



#50 - 2013 Chevrolet Silverado LTZ (TR5720)

2013 Chevrolet Silverado LTZ (TR5720), Gas engine, automatic transmission, Heat/AC, AM/FM CD MP3 radio, DVD player for rear, rear controls, steering wheel controls, power seats/locks/mirrors/windows, heated/cooling leather seats, 4x4, 4 door, running boards, bed cover, moon roof, power sliding rear window, P265/65R18 tires, Z71 package, Ball hitch/Bed items not included. 131,290 miles. Notes: Loaded with options and well maintained. Item Location: Fremont, NE 68025 Equipment Sold "AS IS, WHERE IS": All equipment/property is sold "AS IS, WHERE IS" with no warranty or guarantees, expressed or implied, No operational assessments have been made by DPA Auctions on this item, it has been photographed ONLY.



#51 - 2014 GMC Sierra SLT (TR5721)

2014 GMC Sierra SLT (TR5721), 5.3L Gas engine, Flex Fuel, automatic transmission, Heat/AC, AM/FM CD MP3 radio, Bluetooth, rear controls, steering wheel controls, power seats/locks/mirrors/windows, heated seats, heated steering wheel, 4x4, 4 door, running boards, bed cover, power sliding rear window, dual temperature control, Ball Hitch not included, P265/65R18 tires, 119,783 miles (miles may vary as pickup is still in use). Notes: Well maintained, HAS (4) BRAND NEW TIRES with alignment. Item Location: Fremont, NE 68025 Equipment Sold "AS IS, WHERE IS": All equipment/property is sold "AS IS, WHERE IS" with no warranty or guarantees, expressed or implied, No operational assessments have been made by DPA Auctions on this item, it has been photographed ONLY.



#52 - 1992 GMC Top Kick Truck (PZ9405, Unit 262)

1992 GMC Top Kick Truck (PZ9405, Unit 262), LP gas engine, 6 speed transmission, heat, Am/Fm radio, single axle, 11R22.5 tires, shows 173,945 miles. Notes: Non Runner, Tank in middle of truck NOT included. Item Location: Yarmouth, IA 52660 Equipment Sold "AS IS, WHERE IS": All equipment/property is sold "AS IS, WHERE IS" with no warranty or guarantees, expressed or implied, No operational assessments have been made by DPA Auctions on this item, it has been photographed ONLY.



#53 - 1989 Mack Turbo Intercooler Truck (PZ9407)

1989 Mack Turbo Intercooler Truck (PZ9407), diesel engine, 10 speed transmission, heat, Am/Fm cassette radio, single axle, 11R22.5 tires, shows 440,780 miles. Notes: Non Runner. Item Location: Yarmouth, IA 52660 Equipment Sold "AS IS, WHERE IS": All equipment/property is sold "AS IS, WHERE IS" with no warranty or guarantees, expressed or implied, No operational assessments have been made by DPA Auctions on this item, it has been photographed ONLY.



#54 - 1988 Mack Turbo Intercooler Truck (PZ9409)

1988 Mack Turbo Intercooler Truck (PZ9409), diesel engine, automatic transmission, heat, Am/Fm radio, single axle, 11R22.5 tires, shows 241,410 miles. Notes: Non Runner. TANK NOT INCLUDED. Tank will be sold separate. Item Location: Yarmouth, IA 52660 Equipment Sold "AS IS, WHERE IS": All equipment/property is sold "AS IS, WHERE IS" with no warranty or guarantees, expressed or implied, No operational assessments have been made by DPA Auctions on this item, it has been photographed ONLY.



#55 - 1990 Mack Turbo Intercooler Truck (PZ9406)

1990 Mack Turbo Intercooler Truck (PZ9406), diesel engine, 9 speed transmission, heat, single axle, crane, rotater on crane is bad, outriggers, 295/75R22.5 tires, shows 234,413 miles. Notes: Rotater on crane is bad, clutch needs bled, needs batteries. Item Location: Yarmouth, IA 52660 Equipment Sold "AS IS, WHERE IS": All equipment/property is sold "AS IS, WHERE IS" with no warranty or guarantees, expressed or implied, No operational assessments have been made by DPA Auctions on this item, it has been photographed ONLY.



#56 - 1967 Diamond Reo Model C-11464-DB Wrecker Truck (PZ9408)

1967 Diamond Reo Model C-11464-DB Wrecker Truck (PZ9408), diesel engine, 5 speed transmission, heat, Am/Fm radio, tandem axle, full screw, Holmes wrecker, 10.00-20 front tires, 11R22.5 rear tires. Notes: Non Runner, cracked glass. Item Location: Yarmouth, IA 52660 Equipment Sold "AS IS, WHERE IS": All equipment/property is sold "AS IS, WHERE IS" with no warranty or guarantees, expressed or implied, No operational assessments have been made by DPA Auctions on this item, it has been photographed ONLY.



#57 - 1987 Ford 8000 Flatbed Truck (PZ9403)

1987 Ford 8000 Flatbed Truck (PZ9403), 3208 Cat diesel engine, 5 speed transmission, 2 speed rear end, single axle, 16' steel flatbed, 12R22.5 tires, shows 131,444 miles. Notes: Needs batteries and master cylinder. Item Location: Yarmouth, IA 52660 Equipment Sold "AS IS, WHERE IS": All equipment/property is sold "AS IS, WHERE IS" with no warranty or guarantees, expressed or implied, No operational assessments have been made by DPA Auctions on this item, it has been photographed ONLY.



#58 - 1976 IHC Cargo Star 1952B Roll Off Truck (PZ9404)

1976 IHC Cargo Star 1952B Roll Off Truck (PZ9404), diesel engine, automatic transmission, radio, tandem axle, full screw, approx. 25' roll off bed, winch, 11R22.5 tires, shows 73,030 miles. Notes: Needs batteries. Item Location: Yarmouth, IA 52660 Equipment Sold "AS IS, WHERE IS": All equipment/property is sold "AS IS, WHERE IS" with no warranty or guarantees, expressed or implied, No operational assessments have been made by DPA Auctions on this item, it has been photographed ONLY.



#60 - 1994 GMC 3500HD Dually Service Truck (PZ9397, Unit 12)

1994 GMC 3500HD Dually Service Truck (PZ9397, Unit 12), 4x4, Turbo diesel engine, 3 speed transmission w/overdrive, heat, Am/Fm CD stereo, Reading model LP132-ABDW service body, S/N 342858, 225/70R19.5 tires, shows 97,737 miles. Notes: Needs batteries and throw out bearing. Item Location: Yarmouth, IA 52660 Equipment Sold "AS IS, WHERE IS": All equipment/property is sold "AS IS, WHERE IS" with no warranty or guarantees, expressed or implied, No operational assessments have been made by DPA Auctions on this item, it has been photographed ONLY.



#61 - Steel Awning (PZ9413)

Steel Awning (PZ9413), Pile of approx. 12" x 27' steel awning. Notes: Item Location: Yarmouth, IA 52660 Equipment Sold "AS IS, WHERE IS": All equipment/property is sold "AS IS, WHERE IS" with no warranty or guarantees, expressed or implied, No operational assessments have been made by DPA Auctions on this item, it has been photographed ONLY.



#62 - Gorman Rupp Pump (PZ9415)

Gorman Rupp Pump (PZ9415), Gorman Rupp model 112A20-B Pump, 4-71 Detroit diesel engine, Rockford TD style power take off. Notes: Great pump, used at a duck club. Item Location: Lowpoint, IL 61545 Equipment Sold "AS IS, WHERE IS": All equipment/property is sold "AS IS, WHERE IS" with no warranty or guarantees, expressed or implied, No operational assessments have been made by DPA Auctions on this item, it has been photographed ONLY.



#63 - 2015 CaseIH 7240 Axial-Flow 4x4 Combine (PZ9033)

2015 CaseIH 7240 Axial-Flow 4x4 Combine (PZ9033), FPT 11.1L diesel engine (S/N 000017295), luxury cab, Am/Fm weather band radio, cloth bucket operator seat, cloth buddy seat, rotating screen brush, engine block heater, high definition HID lighting, HD lateral header tilt w/ trap, PowerPlus CVT feeder drive, self-leveling system with grain pan, grain tank HC Hyd covers, HC independent cross auger control, standard cut straw chopper, track propulsion system, Goodyear 87734600 front tracks, 750/65R26 steering tires, 2 speed powered rear axle AGR, Autoguidance Nav II Controller, 372 GPS Receiver - Omni HP/XP, Precision Planting 20/20 YieldSense, shows 304 threshing hours, shows 481 engine hours. Notes: Item Location: New Berlin, IL 62670 Equipment Sold "AS IS, WHERE IS": All equipment/property is sold "AS IS, WHERE IS" with no warranty or guarantees, expressed or implied, No operational assessments have been made by DPA Auctions on this item, it has been photographed ONLY.



#64 - 1998 Generac 25 KW Propane Generator (PZ9528)

1998 Generac 25 KW Propane Generator (PZ9528), Generac model 00753-4 commercial grade propane generator, 3600 RPM, Fiat engine, block heater, liquid cooled, built in 200 Amp automatic transfer switch, single phase 120/240V, 104 amps at 240V, weather proof enclosure, shows 859 hours. Notes: Used as a back-up generator for a telecommunications company. Regularly serviced and maintained. Have forklift to load. Item Location: Springfield, IL 62703 Equipment Sold "AS IS, WHERE IS": All equipment/property is sold "AS IS, WHERE IS" with no warranty or guarantees, expressed or implied, No operational assessments have been made by DPA Auctions on this item, it has been photographed ONLY.



#65 - 1998 Generac 25 KW Propane Generator (PZ9529)

1998 Generac 25 KW Propane Generator (PZ9529), Generac model 00753-4 commercial grade propane generator, 3600 RPM, Fiat engine, block heater, liquid cooled, built in 200 Amp automatic transfer switch, single phase 120/240V, 104 amps at 240V, weather proof enclosure, shows 712 hours. Notes: Used as a back-up generator for a telecommunications company. Regularly serviced and maintained. Have forklift to load. Item Location: Springfield, IL 62703 Equipment Sold "AS IS, WHERE IS": All equipment/property is sold "AS IS, WHERE IS" with no warranty or guarantees, expressed or implied, No operational assessments have been made by DPA Auctions on this item, it has been photographed ONLY.



#66 - 1989 Ford F800 Cab/Chassis (NP6766)

1989 Ford F800 Cab/Chassis (NP6766), Ford 7.8L diesel engine, 5 speed transmission w/ splitter, heat, air conditioning, Am/Fm radio, single axle, spring suspension, 10.00R20 tires, shows 216,578 miles. Notes: Item Location: Niota, IL 62358 Equipment Sold "AS IS, WHERE IS": All equipment/property is sold "AS IS, WHERE IS" with no warranty or guarantees, expressed or implied, No operational assessments have been made by DPA Auctions on this item, it has been photographed ONLY.



#67 - NH3 1000 Gallon Nurse Tank (PZ9369, Unit 23)

NH3 1000 Gallon Nurse Tank (PZ9369, Unit 23), 1000 gallon NH3 nurse tank, top front fill, 5th wheel gear, NTIP No: 131213, poly water tank, 11L-15 flotation tires, no data plate. Notes: Item Location: El Paso, IL 61738 Equipment Sold "AS IS, WHERE IS": All equipment/property is sold "AS IS, WHERE IS" with no warranty or guarantees, expressed or implied, No operational assessments have been made by DPA Auctions on this item, it has been photographed ONLY.



#68 - NH3 1000 Gallon Nurse Tank (PZ9370, Unit MO1)

NH3 1000 Gallon Nurse Tank (PZ9370, Unit MO1), 1000 gallon NH3 nurse tank, top front fill, 5th wheel gear, NTIP No: 131678, poly water tank, 12.5L-15 flotation tires, no data plate. Notes: Item Location: El Paso, IL 61738 Equipment Sold "AS IS, WHERE IS": All equipment/property is sold "AS IS, WHERE IS" with no warranty or guarantees, expressed or implied, No operational assessments have been made by DPA Auctions on this item, it has been photographed ONLY.



#69 - NH3 1000 Gallon Nurse Tank (PZ9371, Unit EP15)

NH3 1000 Gallon Nurse Tank (PZ9371, Unit EP15), 1000 gallon NH3 nurse tank, top front fill, auto steer gear, NTIP No: 122508, 11L-15 flotation tires, no data plate. Notes: Item Location: El Paso, IL 61738 Equipment Sold "AS IS, WHERE IS": All equipment/property is sold "AS IS, WHERE IS" with no warranty or guarantees, expressed or implied, No operational assessments have been made by DPA Auctions on this item, it has been photographed ONLY.



#70 - NH3 1000 Gallon Nurse Tank (PZ9372, Unit EP16)

NH3 1000 Gallon Nurse Tank (PZ9372, Unit EP16), 1000 gallon NH3 nurse tank, top front fill, auto steer gear, NTIP No: 139351, 11L-15 flotation tires, no data plate. Notes: Item Location: El Paso, IL 61738 Equipment Sold "AS IS, WHERE IS": All equipment/property is sold "AS IS, WHERE IS" with no warranty or guarantees, expressed or implied, No operational assessments have been made by DPA Auctions on this item, it has been photographed ONLY.



#71 - NH3 1000 Gallon Nurse Tank (PZ9373, Unit 19)

NH3 1000 Gallon Nurse Tank (PZ9373, Unit 19), 1000 gallon NH3 nurse tank, top front fill, auto steer gear, NTIP No: 126649, poly water tank, 11L-15 flotation tires, no data plate. Notes: Item Location: El Paso, IL 61738 Equipment Sold "AS IS, WHERE IS": All equipment/property is sold "AS IS, WHERE IS" with no warranty or guarantees, expressed or implied, No operational assessments have been made by DPA Auctions on this item, it has been photographed ONLY.



#72 - NH3 1000 Gallon Nurse Tank (PZ9374, Unit 17)

NH3 1000 Gallon Nurse Tank (PZ9374, Unit 17), 1000 gallon NH3 nurse tank, top front fill, auto steer gear, NTIP No: 122504, poly water tank, 11L-15 flotation tires, no data plate. Notes: Item Location: El Paso, IL 61738 Equipment Sold "AS IS, WHERE IS": All equipment/property is sold "AS IS, WHERE IS" with no warranty or guarantees, expressed or implied, No operational assessments have been made by DPA Auctions on this item, it has been photographed ONLY.



#73 - NH3 1000 Gallon Nurse Tank (PZ9375, Unit F2)

NH3 1000 Gallon Nurse Tank (PZ9375, Unit F2), 1000 gallon NH3 nurse tank, top front fill, 5th wheel gear, NTIP No: 131676, poly water tank, 11L-15 flotation tires, no data plate. Notes: Item Location: El Paso, IL 61738 Equipment Sold "AS IS, WHERE IS": All equipment/property is sold "AS IS, WHERE IS" with no warranty or guarantees, expressed or implied, No operational assessments have been made by DPA Auctions on this item, it has been photographed ONLY.



#74 - NH3 1000 Gallon Nurse Tank (PZ9376, Unit F1)

NH3 1000 Gallon Nurse Tank (PZ9376, Unit F1), 1000 gallon NH3 nurse tank, top front fill, 5th wheel gear, NTIP No: 131680, poly water tank, 11L-15 flotation tires, no data plate. Notes: Item Location: El Paso, IL 61738 Equipment Sold "AS IS, WHERE IS": All equipment/property is sold "AS IS, WHERE IS" with no warranty or guarantees, expressed or implied, No operational assessments have been made by DPA Auctions on this item, it has been photographed ONLY.



#75 - NH3 1000 Gallon Nurse Tank (PZ9377, Unit F5)

NH3 1000 Gallon Nurse Tank (PZ9377, Unit F5), 1000 gallon NH3 nurse tank, top front fill, 5th wheel gear, NTIP No: 127069, poly water tank, 11L-15 flotation tires, no data plate. Notes: Item Location: El Paso, IL 61738 Equipment Sold "AS IS, WHERE IS": All equipment/property is sold "AS IS, WHERE IS" with no warranty or guarantees, expressed or implied, No operational assessments have been made by DPA Auctions on this item, it has been photographed ONLY.



#76 - 2014 CaseIH Patriot 4430 Sprayer (NP6813)

2014 CaseIH Patriot 4430 Sprayer (NP6813), CaseIH diesel engine, hydrostatic transmission, heat, air conditioning, Am/Fm radio, power windows, leather seats, 1,200 gallon stainless steel liquid system, 120' boom, 5-way nozzle bodies, stainless steel chemical inductor, top poly rinse tank, 55 gallon poly foam marker tank, 380/90R46 tires, Raven Viper Pro, shows 2,335 hours. Notes: Item Location: Tribune, KS 67879 Equipment Sold "AS IS, WHERE IS": All equipment/property is sold "AS IS, WHERE IS" with no warranty or guarantees, expressed or implied, No operational assessments have been made by DPA Auctions on this item, it has been photographed ONLY.



#78 - (2) Goodyear Combine Tires/Rims (DR8390)

(2) Goodyear Combine Tires/Rims (DR8390), size IF900/60R32, 10 bolt rim pattern, TIRES ARE BRAND NEW, NEVER SEEN DIRT. Notes: Item Location: Urbandale, IA 50323 Equipment Sold "AS IS, WHERE IS": All equipment/property is sold "AS IS, WHERE IS" with no warranty or guarantees, expressed or implied, No operational assessments have been made by DPA Auctions on this item, it has been photographed ONLY.



#79 - 2013 CaseIH Titan 4530 Dry Floater (NP6812)

2013 CaseIH Titan 4530 Dry Floater (NP6812), CaseIH diesel engine, Allison automatic transmission, heat, air conditioning, Am/Fm radio, power mirrors, CaseIH Flex-Air 810 dry air flow system (S/N YCT034004), 70' boom, Agri-Cover electric tarp, 1050/50R32 rear tires, 750/50R26 front tires, Raven 600ic SmarTrax, Raven Viper Pro, shows 4,346 hours. Notes: Item Location: Tribune, KS 67879 Equipment Sold "AS IS, WHERE IS": All equipment/property is sold "AS IS, WHERE IS" with no warranty or guarantees, expressed or implied, No operational assessments have been made by DPA Auctions on this item, it has been photographed ONLY.



#80 - NH3 Tank (NP6815, Unit 248)

NH3 Tank (NP6815, Unit 248), 1,000 gallon capacity, top front fill, Pryor style gear, 11L-15 flotation tires, water tank, data plate. Notes: 1 bent rim, tank has been taken out of service. Item Location: Tribune, KS 67879 Equipment Sold "AS IS, WHERE IS": All equipment/property is sold "AS IS, WHERE IS" with no warranty or guarantees, expressed or implied, No operational assessments have been made by DPA Auctions on this item, it has been photographed ONLY.



#81 - Poly Liquid Nurse Trailer (NP6814)

Poly Liquid Nurse Trailer (NP6814), 1,000 gallon capacity, tandem axle gear, 11L-15 flotation tires (1 tires shredded - see photos). Notes: Item Location: Tribune, KS 67879 Equipment Sold "AS IS, WHERE IS": All equipment/property is sold "AS IS, WHERE IS" with no warranty or guarantees, expressed or implied, No operational assessments have been made by DPA Auctions on this item, it has been photographed ONLY.



#83 - 1991 ALMACO Combine (NP6758)

1991 ALMACO Combine (NP6758), Model SPC-20, Deutz diesel engine, hydrostatic transmission, open cab style, 2 row bean head included, 12.4-24 rear tires, good tread on tires, shows 2,050 hours. Notes: Multiple new hydraulic lines and new battery. Has been stored in shop the past few years and is in very good condition. Item Location: Redwood Falls, MN 56283 Equipment Sold "AS IS, WHERE IS": All equipment/property is sold "AS IS, WHERE IS" with no warranty or guarantees, expressed or implied, No operational assessments have been made by DPA Auctions on this item, it has been photographed ONLY.



#84 - John Deere 6000 Sprayer (PZ9545)

John Deere 6000 Sprayer (PZ9545), diesel engine, manual transmission, heat, radio, cab, lights, 320 gallon poly liquid system, 40' boom. Notes: Item Location: Kanawha, IA 50447 Equipment Sold "AS IS, WHERE IS": All equipment/property is sold "AS IS, WHERE IS" with no warranty or guarantees, expressed or implied, No operational assessments have been made by DPA Auctions on this item, it has been photographed ONLY.



#85 - U Trough Auger (PZ9546)

U Trough Auger (PZ9546), 96' x 16" U trough auger, Falk model 101-4EZ2-06A6 motoreducer, 125 RPM, 13.59 ratio. Notes: Item Location: Coon Rapids, IA 50058 Equipment Sold "AS IS, WHERE IS": All equipment/property is sold "AS IS, WHERE IS" with no warranty or guarantees, expressed or implied, No operational assessments have been made by DPA Auctions on this item, it has been photographed ONLY.



#86 - 2011 Chevrolet Silverado 3500HD (TR5709)

2011 Chevrolet Silverado 3500HD (TR5709), LT model, 6.6L Duramax Diesel engine, Allison automatic transmission, LT275/65R18 tires, running boards, bed liner, B&W 5th wheel, 4x4, AM/FM CD player, 4 door, Steering wheel controls, power windows/locks/seats, dual climate control, cruise control, 142,915 miles. Notes: Check engine light is on, Speed is limited to 55 MPH. Item Location: Fremont, NE 68025 Equipment Sold "AS IS, WHERE IS": All equipment/property is sold "AS IS, WHERE IS" with no warranty or guarantees, expressed or implied, No operational assessments have been made by DPA Auctions on this item, it has been photographed ONLY.



#87 - NH3 1000 Gallon Nurse Tank (PZ9378, Unit 10)

NH3 1000 Gallon Nurse Tank (PZ9378, Unit 10), 1000 gallon NH3 nurse tank, top front fill, auto steer gear, NTIP No: 131232, poly water tank, 11L-15 flotation tires, no data plate. Notes: Item Location: El Paso, IL 61738 Equipment Sold "AS IS, WHERE IS": All equipment/property is sold "AS IS, WHERE IS" with no warranty or guarantees, expressed or implied, No operational assessments have been made by DPA Auctions on this item, it has been photographed ONLY.



#88 - NH3 1000 Gallon Nurse Tank (PZ9379, Unit F4)

NH3 1000 Gallon Nurse Tank (PZ9379, Unit F4), 1000 gallon NH3 nurse tank, top front fill, 5th wheel gear, NTIP No: 131675, poly water tank, 11L-15 flotation tires, no data plate. Notes: Item Location: El Paso, IL 61738 Equipment Sold "AS IS, WHERE IS": All equipment/property is sold "AS IS, WHERE IS" with no warranty or guarantees, expressed or implied, No operational assessments have been made by DPA Auctions on this item, it has been photographed ONLY.



#89 - NH3 1000 Gallon Nurse Tank (PZ9380, Unit F3)

NH3 1000 Gallon Nurse Tank (PZ9380, Unit F3), 1000 gallon NH3 nurse tank, top front fill, 5th wheel gear, NTIP No: 131677, poly water tank, 11L-15 flotation tires, no data plate. Notes: Item Location: El Paso, IL 61738 Equipment Sold "AS IS, WHERE IS": All equipment/property is sold "AS IS, WHERE IS" with no warranty or guarantees, expressed or implied, No operational assessments have been made by DPA Auctions on this item, it has been photographed ONLY.



#90 - NH3 1000 Gallon Nurse Tank (PZ9381, Unit 4)

NH3 1000 Gallon Nurse Tank (PZ9381, Unit 4), 1000 gallon NH3 nurse tank, top front fill, 5th wheel gear, NTIP No: 139350, poly water tank, 11L-15 flotation tires, no data plate. Notes: Item Location: El Paso, IL 61738 Equipment Sold "AS IS, WHERE IS": All equipment/property is sold "AS IS, WHERE IS" with no warranty or guarantees, expressed or implied, No operational assessments have been made by DPA Auctions on this item, it has been photographed ONLY.



#91 - NH3 1000 Gallon Nurse Tank (PZ9382, Unit 3)

NH3 1000 Gallon Nurse Tank (PZ9382, Unit 3), 1000 gallon NH3 nurse tank, top front fill, 5th wheel gear, NTIP No: 131231, poly water tank, 11L-15 flotation tires, no data plate. Notes: Item Location: El Paso, IL 61738 Equipment Sold "AS IS, WHERE IS": All equipment/property is sold "AS IS, WHERE IS" with no warranty or guarantees, expressed or implied, No operational assessments have been made by DPA Auctions on this item, it has been photographed ONLY.



#92 - NH3 1000 Gallon Nurse Tank (PZ9383, Unit 29)

NH3 1000 Gallon Nurse Tank (PZ9383, Unit 29), 1000 gallon NH3 nurse tank, top front fill, auto steer gear, NTIP No: 104998, poly water tank, 11L-15 flotation tires, no data plate. Notes: Item Location: El Paso, IL 61738 Equipment Sold "AS IS, WHERE IS": All equipment/property is sold "AS IS, WHERE IS" with no warranty or guarantees, expressed or implied, No operational assessments have been made by DPA Auctions on this item, it has been photographed ONLY.



#93 - NH3 1000 Gallon Nurse Tank (PZ9384, Unit EP18)

NH3 1000 Gallon Nurse Tank (PZ9384, Unit EP18), 1000 gallon NH3 nurse tank, top front fill, 5th wheel gear, NTIP No: 139349, 11L-15 flotation tires, no data plate. Notes: Item Location: El Paso, IL 61738 Equipment Sold "AS IS, WHERE IS": All equipment/property is sold "AS IS, WHERE IS" with no warranty or guarantees, expressed or implied, No operational assessments have been made by DPA Auctions on this item, it has been photographed ONLY.



#94 - NH3 1000 Gallon Nurse Tank (PZ9385, Unit 21)

NH3 1000 Gallon Nurse Tank (PZ9385, Unit 21), 1000 gallon NH3 nurse tank, top front fill, auto steer gear, NTIP No: 122500, poly water tank, 11L-15 flotation tires, no data plate. Notes: Item Location: El Paso, IL 61738 Equipment Sold "AS IS, WHERE IS": All equipment/property is sold "AS IS, WHERE IS" with no warranty or guarantees, expressed or implied, No operational assessments have been made by DPA Auctions on this item, it has been photographed ONLY.



#95 - NH3 1000 Gallon Nurse Tank (PZ9386, Unit 20)

NH3 1000 Gallon Nurse Tank (PZ9386, Unit 20), 1000 gallon NH3 nurse tank, top front fill, auto steer gear, NTIP No: 131226, poly water tank, 11L-15 flotation tires, no data plate. Notes: Item Location: El Paso, IL 61738 Equipment Sold "AS IS, WHERE IS": All equipment/property is sold "AS IS, WHERE IS" with no warranty or guarantees, expressed or implied, No operational assessments have been made by DPA Auctions on this item, it has been photographed ONLY.



#96 - 2015 MacDon FD75-S Flexdraper Head (NP6751)

2015 MacDon FD75-S Flexdraper Head (NP6751), 40' head, hydraulic fore/aft. Notes: This head has had approx. 1,500 acres through it. Header trailer DOES NOT SELL with this lot. Item Location: New Berlin, IL 62670 Equipment Sold "AS IS, WHERE IS": All equipment/property is sold "AS IS, WHERE IS" with no warranty or guarantees, expressed or implied, No operational assessments have been made by DPA Auctions on this item, it has been photographed ONLY.



#97 - (2) Firestone Combine Tires/Rims (DR8391)

(2) Firestone Combine Tires/Rims (DR8391), size 900/60R32, 10 bolt rim pattern, TIRES ARE BRAND NEW, NEVER SEEN DIRT. Notes: Item Location: Urbandale, IA 50323 Equipment Sold "AS IS, WHERE IS": All equipment/property is sold "AS IS, WHERE IS" with no warranty or guarantees, expressed or implied, No operational assessments have been made by DPA Auctions on this item, it has been photographed ONLY.



#98 - (2) Firestone Combine Tires/Rims (DR8392)

(2) Firestone Combine Tires/Rims (DR8392), size 900/60R32, 10 bolt rim pattern, TIRES ARE BRAND NEW, NEVER SEEN DIRT. Notes: Item Location: Urbandale, IA 50323 Equipment Sold "AS IS, WHERE IS": All equipment/property is sold "AS IS, WHERE IS" with no warranty or guarantees, expressed or implied, No operational assessments have been made by DPA Auctions on this item, it has been photographed ONLY.



#99 - 2015 RoGator RG1300B Sprayer (NP6819)

2015 RoGator RG1300B Sprayer (NP6819), AGCO 8.4L diesel engine (370 Peak HP), 7 speed hydrostatic transmission, heat, air conditioning, Am/Fm CD radio, power mirrors, 1,300 gallon stainless steel liquid system, 120' boom, 5-way nozzle bodies, top poly rinse tank, poly chemical inductor, 380/90R46 tires, Trimble auto steer, Trimble receiver, Accu-Boom, Trimble rate controller, shows 3,005 hours. Notes: Item Location: Great Bend, KS 67530 Equipment Sold "AS IS, WHERE IS": All equipment/property is sold "AS IS, WHERE IS" with no warranty or guarantees, expressed or implied, No operational assessments have been made by DPA Auctions on this item, it has been photographed ONLY.



#100 - 2009 Vantage End Dump Trailer (NP6822, Unit 83)

2009 Vantage End Dump Trailer (NP6822, Unit 83), Model S-90-ALPHA, poly lined, single axle w/ lift axle, Henrickson air suspension, 11R22.5 rear tires, 11R22.5 lift axle tires, outside aluminum wheels, Lift-Axle control, suspension up/down, tailgate open/close, manual roll tarp, single hoist, GVWR 68,000lbs. Notes: Item Location: Stafford, KS 67578 Equipment Sold "AS IS, WHERE IS": All equipment/property is sold "AS IS, WHERE IS" with no warranty or guarantees, expressed or implied, No operational assessments have been made by DPA Auctions on this item, it has been photographed ONLY.



#101 - 1999 International 4800 4X4 truck (TR5710)

1999 International 4800 4X4 truck (TR5710), DT466 Diesel Engine, Allison Automatic Transmission/Weller MT653 (replaced in December 2017, has 2869 miles and 175 PTO Hours on replacement), Aluminum Flat bed new in 2014, AC-Power Steering, Air Horn, Air ride drivers seat, Rediline DC inverter. Instrument cluster was changed in 2015, Mounted Equipment: 1999 Terex Commander 4047 Digger Derrick, Full Pressure Open Center Hydraulic System, 47' Sheave Height, Fiberglass 3rd stage Pin on Fiberglass Bucket with liner and cover, NO UPPER CONTROLS, Turret Mounted Winch, 24750lb max Capacity, capacity at 10' 11000lb, 2 Sets "A" Frame Outriggers. Notes: Can be seen by appointment at Burt County Public Power District 613 N 13th Street Tekamah, Ne 68061 Hours 7:30am till 4Pm Monday- Friday. Item Location: Tekamah, NE 68061 Equipment Sold "AS IS, WHERE IS": All equipment/property is sold "AS IS, WHERE IS" with no warranty or guarantees, expressed or implied, No operational assessments have been made by DPA Auctions on this item, it has been photographed ONLY.



#102 - NH3 1000 Gallon Nurse Tank (PZ9387, Unit 26)

NH3 1000 Gallon Nurse Tank (PZ9387, Unit 26), 1000 gallon NH3 nurse tank, top front fill, auto steer gear, NTIP No: 131208, poly water tank, 11L-15 flotation tires, no data plate. Notes: Item Location: El Paso, IL 61738 Equipment Sold "AS IS, WHERE IS": All equipment/property is sold "AS IS, WHERE IS" with no warranty or guarantees, expressed or implied, No operational assessments have been made by DPA Auctions on this item, it has been photographed ONLY.



#103 - NH3 1000 Gallon Nurse Tank (PZ9388, Unit 14)

NH3 1000 Gallon Nurse Tank (PZ9388, Unit 14), 1000 gallon NH3 nurse tank, top front fill, 5th wheel gear, NTIP No: 131217, poly water tank, 11L-15 flotation tires, no data plate. Notes: Item Location: El Paso, IL 61738 Equipment Sold "AS IS, WHERE IS": All equipment/property is sold "AS IS, WHERE IS" with no warranty or guarantees, expressed or implied, No operational assessments have been made by DPA Auctions on this item, it has been photographed ONLY.



#104 - NH3 1000 Gallon Nurse Tank (PZ9389, Unit 22)

NH3 1000 Gallon Nurse Tank (PZ9389, Unit 22), 1000 gallon NH3 nurse tank, top front fill, auto steer gear, NTIP No: 126636, poly water tank, 11L-15 flotation tires, no data plate. Notes: Item Location: El Paso, IL 61738 Equipment Sold "AS IS, WHERE IS": All equipment/property is sold "AS IS, WHERE IS" with no warranty or guarantees, expressed or implied, No operational assessments have been made by DPA Auctions on this item, it has been photographed ONLY.



#105 - NH3 1000 Gallon Nurse Tank (PZ9390, Unit 11)

NH3 1000 Gallon Nurse Tank (PZ9390, Unit 11), 1000 gallon NH3 nurse tank, top front fill, auto steer gear, NTIP No: 131211, poly water tank, 11L-15 flotation tires, no data plate. Notes: Item Location: El Paso, IL 61738 Equipment Sold "AS IS, WHERE IS": All equipment/property is sold "AS IS, WHERE IS" with no warranty or guarantees, expressed or implied, No operational assessments have been made by DPA Auctions on this item, it has been photographed ONLY.



#105A - 2006 International 8600 Dry Tender Truck (NP6757, Unit 77478)

2006 International 8600 Dry Tender Truck (NP6757, Unit 77478), diesel engine, manual transmission, tandem axle, air ride suspension, Doyle stainless steel dry tender box, hydraulic, side discharge auger, vibrators, electric roll tarp, shows 415,604 miles. Notes: This truck has extensive damage and will be sold with a SALVAGE title, contact seller for more details. This item must be picked up and removed by August 7, 2018, NO EXCEPTIONS. Item Location: Elk Mound, WI 54739 Equipment Sold "AS IS, WHERE IS": All equipment/property is sold "AS IS, WHERE IS" with no warranty or guarantees, expressed or implied, No operational assessments have been made by DPA Auctions on this item, it has been photographed ONLY.



#105B - 2015 CaseIH 4408 Chopping Head (NP6750)

2015 CaseIH 4408 Chopping Head (NP6750), 8 row 30", hydraulic stripper plates, poly snouts, end divider w/ powered auger, pinching stalk rolls w/ chopper. Notes: This head has had approx. 1,500 acres through it. Header trailer DOES NOT SELL with this lot. Item Location: New Berlin, IL 62670 Equipment Sold "AS IS, WHERE IS": All equipment/property is sold "AS IS, WHERE IS" with no warranty or guarantees, expressed or implied, No operational assessments have been made by DPA Auctions on this item, it has been photographed ONLY.



#106 - NH3 1000 Gallon Nurse Tank (PZ9391, Unit 12)

NH3 1000 Gallon Nurse Tank (PZ9391, Unit 12), 1000 gallon NH3 nurse tank, top front fill, auto steer gear, NTIP No: 126642, poly water tank, 11L-15 flotation tires, no data plate. Notes: Item Location: El Paso, IL 61738 Equipment Sold "AS IS, WHERE IS": All equipment/property is sold "AS IS, WHERE IS" with no warranty or guarantees, expressed or implied, No operational assessments have been made by DPA Auctions on this item, it has been photographed ONLY.



#107 - NH3 1000 Gallon Nurse Tank (PZ9392, Unit 24)

NH3 1000 Gallon Nurse Tank (PZ9392, Unit 24), 1000 gallon NH3 nurse tank, top front fill, auto steer gear, NTIP No: 127068, poly water tank, 11L-15 flotation tires, no data plate. Notes: Item Location: El Paso, IL 61738 Equipment Sold "AS IS, WHERE IS": All equipment/property is sold "AS IS, WHERE IS" with no warranty or guarantees, expressed or implied, No operational assessments have been made by DPA Auctions on this item, it has been photographed ONLY.



#108 - NH3 1000 Gallon Nurse Tank (PZ9393, Unit 2)

NH3 1000 Gallon Nurse Tank (PZ9393, Unit 2), 1000 gallon NH3 nurse tank, top front fill, 5th wheel gear, NTIP No: 131212, poly water tank, 11L-15 flotation tires, no data plate. Notes: Item Location: El Paso, IL 61738 Equipment Sold "AS IS, WHERE IS": All equipment/property is sold "AS IS, WHERE IS" with no warranty or guarantees, expressed or implied, No operational assessments have been made by DPA Auctions on this item, it has been photographed ONLY.



#109 - NH3 1000 Gallon Nurse Tank (PZ9394, Unit 13)

NH3 1000 Gallon Nurse Tank (PZ9394, Unit 13), 1000 gallon NH3 nurse tank, top front fill, auto steer gear, NTIP No: 131219, poly water tank, 11L-15 flotation tires, no data plate. Notes: Item Location: El Paso, IL 61738 Equipment Sold "AS IS, WHERE IS": All equipment/property is sold "AS IS, WHERE IS" with no warranty or guarantees, expressed or implied, No operational assessments have been made by DPA Auctions on this item, it has been photographed ONLY.



#110 - NH3 1000 Gallon Nurse Tank (PZ9395, Unit 6)

NH3 1000 Gallon Nurse Tank (PZ9395, Unit 6), 1000 gallon NH3 nurse tank, top front fill, 5th wheel gear, NTIP No: 131224, poly water tank, 11L-15 flotation tires, no data plate. Notes: Item Location: El Paso, IL 61738 Equipment Sold "AS IS, WHERE IS": All equipment/property is sold "AS IS, WHERE IS" with no warranty or guarantees, expressed or implied, No operational assessments have been made by DPA Auctions on this item, it has been photographed ONLY.



#111 - NH3 1000 Gallon Nurse Tank (PZ9396, Unit 30)

NH3 1000 Gallon Nurse Tank (PZ9396, Unit 30), 1000 gallon NH3 nurse tank, top front fill, auto steer gear, NTIP No: 126641, poly water tank, 11L-15 flotation tires, no data plate. Notes: Item Location: El Paso, IL 61738 Equipment Sold "AS IS, WHERE IS": All equipment/property is sold "AS IS, WHERE IS" with no warranty or guarantees, expressed or implied, No operational assessments have been made by DPA Auctions on this item, it has been photographed ONLY.



#112 - (2) Firestone Combine Tires/Rims (DR8393)

(2) Firestone Combine Tires/Rims (DR8393), size 600/65R28, 10 bolt rim pattern, TIRES ARE BRAND NEW, NEVER SEEN DIRT. Notes: Item Location: Urbandale, IA 50323 Equipment Sold "AS IS, WHERE IS": All equipment/property is sold "AS IS, WHERE IS" with no warranty or guarantees, expressed or implied, No operational assessments have been made by DPA Auctions on this item, it has been photographed ONLY.



#113 - (2) Firestone Combine Tires/Rims (DR8389)

(2) Firestone Combine Tires/Rims (DR8389), size 900/60R32, 10 bolt rim pattern, TIRES ARE BRAND NEW, NEVER SEEN DIRT. Notes: Item Location: Urbandale, IA 50323 Equipment Sold "AS IS, WHERE IS": All equipment/property is sold "AS IS, WHERE IS" with no warranty or guarantees, expressed or implied, No operational assessments have been made by DPA Auctions on this item, it has been photographed ONLY.



#114 - Running Gear (PZ9270)

Running Gear (PZ9270), 5th wheel running gear, 11L-15 flotation tires. Notes: Item Location: Aplington, IA 50604 Equipment Sold "AS IS, WHERE IS": All equipment/property is sold "AS IS, WHERE IS" with no warranty or guarantees, expressed or implied, No operational assessments have been made by DPA Auctions on this item, it has been photographed ONLY.



#115 - Running Gear (PZ9271)

Running Gear (PZ9271), 5th wheel running gear, 11L-15 flotation tires. Notes: Item Location: Aplington, IA 50604 Equipment Sold "AS IS, WHERE IS": All equipment/property is sold "AS IS, WHERE IS" with no warranty or guarantees, expressed or implied, No operational assessments have been made by DPA Auctions on this item, it has been photographed ONLY.



#116 - Running Gear (PZ9272)

Running Gear (PZ9272), 5th wheel running gear, 11L-15 flotation tires. Notes: Item Location: Aplington, IA 50604 Equipment Sold "AS IS, WHERE IS": All equipment/property is sold "AS IS, WHERE IS" with no warranty or guarantees, expressed or implied, No operational assessments have been made by DPA Auctions on this item, it has been photographed ONLY.



#117 - Running Gear (PZ9273)

Running Gear (PZ9273), 5th wheel running gear, 11L-15 flotation tires. Notes: Item Location: Aplington, IA 50604 Equipment Sold "AS IS, WHERE IS": All equipment/property is sold "AS IS, WHERE IS" with no warranty or guarantees, expressed or implied, No operational assessments have been made by DPA Auctions on this item, it has been photographed ONLY.



#118 - Running Gear (PZ9274)

Running Gear (PZ9274), 5th wheel running gear, 11L-15 flotation tires. Notes: Item Location: Aplington, IA 50604 Equipment Sold "AS IS, WHERE IS": All equipment/property is sold "AS IS, WHERE IS" with no warranty or guarantees, expressed or implied, No operational assessments have been made by DPA Auctions on this item, it has been photographed ONLY.



#119 - 2008 RoGator 1286C Dry Spreader (NP6820)

2008 RoGator 1286C Dry Spreader (NP6820), Cat diesel engine, hydrostatic transmission, heat, air conditioning, Am/Fm CD radio, New Leader L3220 G4 stainless steel dry spreader box (S/N 131943), dual spinners, hydraulic, belt over chain, New Leader stainless steel MultApplier insert (NEVER USED), 380/90R46 tires, Raven SmarTrax, Raven Viper Pro, shows 3,637 hours. Notes: Item Location: luka, KS 67066 Equipment Sold "AS IS, WHERE IS": All equipment/property is sold "AS IS, WHERE IS" with no warranty or guarantees, expressed or implied, No operational assessments have been made by DPA Auctions on this item, it has been photographed ONLY.



#120 - 1991 International 2554 Dry Floater (NP6831)

1991 International 2554 Dry Floater (NP6831), IHC diesel engine, automatic transmission, heat, air conditioning, Am/Fm radio, dry spreader box, dual spinners, belt over chain, hydraulic, 95 gallon stainless steel foam marker tank, 66x43.00-25 rear tires, 48x25.00-20 front tires, New Leader MARK III, shows 4,023 hours. Notes: Operation condition of this machine is unknown, please contact seller for more details. Item Location: Stafford, KS 67578 Equipment Sold "AS IS, WHERE IS": All equipment/property is sold "AS IS, WHERE IS" with no warranty or guarantees, expressed or implied, No operational assessments have been made by DPA Auctions on this item, it has been photographed ONLY.



#121 - 1999 Travis End Dump Trailer (NP6823)

1999 Travis End Dump Trailer (NP6823), Model 1999 28FT. Travis T-102, single axle w/ lift axle, Henrickson air suspension, 11R24.5 rear tires, 425/65R22.5 super single lift axle tires, all aluminum rear wheels, Lift-Axle control, Gate open/close control, manual roll tarp, single hoist, GVWR 68,000lbs. Notes: Please allow at least 45 days for title transfer. Item Location: Stafford, KS 67578 Equipment Sold "AS IS, WHERE IS": All equipment/property is sold "AS IS, WHERE IS" with no warranty or guarantees, expressed or implied, No operational assessments have been made by DPA Auctions on this item, it has been photographed ONLY.



#122 - 1987 GMC Brigadier Dry Tender Truck (NP6832)

1987 GMC Brigadier Dry Tender Truck (NP6832), diesel engine, manual transmission, heat, AM radio, single axle, spring suspension, Wilmar Loadrunner 10 dry tender box, rear discharge auger, 11R22.5 rear tires, 295/75R22.5 front tires, shows 360,173 miles. Notes: Truck has NO BATTERIES. Operation condition of this machine is unknown, please contact seller for more details. Please allow at least 45 days for title transfer. Item Location: Stafford, KS 67578 Equipment Sold "AS IS, WHERE IS": All equipment/property is sold "AS IS, WHERE IS" with no warranty or guarantees, expressed or implied, No operational assessments have been made by DPA Auctions on this item, it has been photographed ONLY.



#123 - 2006 CAT 765B Tractor (TR5712)

2006 CAT 765B Tractor (TR5712), diesel engine, power shift transmission, Heat/AC, AM/FM CD player, Ag Leader Monitor, Trimble Guidance, front weights, wide spacing, steerable hitch, 25" tracks, 5 port hydraulics, PTO, Approx. 6000 hours. Notes: Item Location: Hawarden, IA 51023 Equipment Sold "AS IS, WHERE IS": All equipment/property is sold "AS IS, WHERE IS" with no warranty or guarantees, expressed or implied, No operational assessments have been made by DPA Auctions on this item, it has been photographed ONLY.



#124 - Running Gear (PZ9275)

Running Gear (PZ9275), auto steer running gear, 11L-15 flotation tires. Notes: Item Location: Aplington, IA 50604 Equipment Sold "AS IS, WHERE IS": All equipment/property is sold "AS IS, WHERE IS" with no warranty or guarantees, expressed or implied, No operational assessments have been made by DPA Auctions on this item, it has been photographed ONLY.



#125 - Running Gear (PZ9276)

Running Gear (PZ9276), 5th wheel running gear, 11L-15 flotation tires. Notes: Item Location: Aplington, IA 50604 Equipment Sold "AS IS, WHERE IS": All equipment/property is sold "AS IS, WHERE IS" with no warranty or guarantees, expressed or implied, No operational assessments have been made by DPA Auctions on this item, it has been photographed ONLY.



#126 - Running Gear (PZ9277)

Running Gear (PZ9277), 5th wheel running gear, 11L-15 flotation tires. Notes: Item Location: Aplington, IA 50604 Equipment Sold "AS IS, WHERE IS": All equipment/property is sold "AS IS, WHERE IS" with no warranty or guarantees, expressed or implied, No operational assessments have been made by DPA Auctions on this item, it has been photographed ONLY.



#127 - P & H Running Gear (PZ9316)

P & H Running Gear (PZ9316), P & H Heavy Duty 5th wheel running gear, 16.5L-16.1SL flotation tires. Notes: Item Location: New Hampton, IA 50659 Equipment Sold "AS IS, WHERE IS": All equipment/property is sold "AS IS, WHERE IS" with no warranty or guarantees, expressed or implied, No operational assessments have been made by DPA Auctions on this item, it has been photographed ONLY.



#128 - P & H Running Gear (PZ9317)

P & H Running Gear (PZ9317), P & H Heavy Duty 5th wheel running gear, 16.5L-16.1SL flotation tires. Notes: Item Location: New Hampton, IA 50659 Equipment Sold "AS IS, WHERE IS": All equipment/property is sold "AS IS, WHERE IS" with no warranty or guarantees, expressed or implied, No operational assessments have been made by DPA Auctions on this item, it has been photographed ONLY.



#129 - 1976 White Field Boss 2-70 Tractor (PZ9315, Unit 671)

1976 White Field Boss 2-70 Tractor (PZ9315, Unit 671), wide front, diesel engine, 6 speed transmission, PTO, 3-point, 2 port hydraulics, 11L-15SL front tires, 16.9-34 rear tires, shows 4851 hours. Notes: Item Location: New Hampton, IA 50659 Equipment Sold "AS IS, WHERE IS": All equipment/property is sold "AS IS, WHERE IS" with no warranty or guarantees, expressed or implied, No operational assessments have been made by DPA Auctions on this item, it has been photographed ONLY.



#130 - 1992 Unverferth 150 J-Star Five Weigh Wagon (KD108)

1992 Unverferth 150 J-Star Five Weigh Wagon (KD108), 10 lb. increments, Shur-lok roll tarp, good tires, scale works well, motor starts and works, new hitch, newer battery, electric start, belt driven, hydraulic folding auger, good lighting, serviced and ready to work, S/N: 150462. Notes: Lights and breaks do not work. Item Location: Armstrong, IA 50514 Equipment Sold "AS IS, WHERE IS": All equipment/property is sold "AS IS, WHERE IS" with no warranty or guarantees, expressed or implied, No operational assessments have been made by DPA Auctions on this item, it has been photographed ONLY.



#131 - DuPont Enlite Herbicide (NP6809)

DuPont Enlite Herbicide (NP6809), 63# or 1008 oz, enough to spray 336 acres of soybeans. Notes: NEW Product, NEVER opened. Item Location: Coal Valley, IL 61240 Equipment Sold "AS IS, WHERE IS": All equipment/property is sold "AS IS, WHERE IS" with no warranty or guarantees, expressed or implied, No operational assessments have been made by DPA Auctions on this item, it has been photographed ONLY.



#132 - 1995 Trailmobile Step Deck Trailer (PZ9368)

1995 Trailmobile Step Deck Trailer (PZ9368), 1995 Trailmobile step deck trailer, 10'10" top deck, 35' main deck, wood floor, steel above tandems, tandem axle, spring suspension, 255/70R22.5 tires. Notes: Steel above tandems will be replaced with new steel. Please contact seller for more information. Item Location: Atlantic, IA 50022 Equipment Sold "AS IS, WHERE IS": All equipment/property is sold "AS IS, WHERE IS" with no warranty or guarantees, expressed or implied, No operational assessments have been made by DPA Auctions on this item, it has been photographed ONLY.



#133 - (2) Hydraulic Pumps (NP6808)

(2) Hydraulic Pumps (NP6808), with Jack Shafts. Notes: Item Location: Coal Valley, IL 61240 Equipment Sold "AS IS, WHERE IS": All equipment/property is sold "AS IS, WHERE IS" with no warranty or guarantees, expressed or implied, No operational assessments have been made by DPA Auctions on this item, it has been photographed ONLY.



#134 - 1989 Ford 9000 Grain Truck (NP6810)

1989 Ford 9000 Grain Truck (NP6810), Cat 3406B diesel engine 425HP (NEW head and oil cooler), 13 speed transmission, tandem axle, Kahn 20' aluminum grain body, roll tarp, 58,000 GVW, Hendrickson walking beam suspension, 22.5 tires, shows 385,332 miles. Notes: Item Location: Coal Valley, IL 61240 Equipment Sold "AS IS, WHERE IS": All equipment/property is sold "AS IS, WHERE IS" with no warranty or guarantees, expressed or implied, No operational assessments have been made by DPA Auctions on this item, it has been photographed ONLY.



#135 - Kenworth 60" Flat Top Sleeper (NP6806)

Kenworth 60" Flat Top Sleeper (NP6806), over all good condition. Notes: Item Location: Coal Valley, IL 61240 Equipment Sold "AS IS, WHERE IS": All equipment/property is sold "AS IS, WHERE IS" with no warranty or guarantees, expressed or implied, No operational assessments have been made by DPA Auctions on this item, it has been photographed ONLY.



#136 - (3) Saddle Box Aluminum Side Boxes (NP6807)

(3) Saddle Box Aluminum Side Boxes (NP6807), no keys. Notes: Item Location: Coal Valley, IL 61240 Equipment Sold "AS IS, WHERE IS": All equipment/property is sold "AS IS, WHERE IS" with no warranty or guarantees, expressed or implied, No operational assessments have been made by DPA Auctions on this item, it has been photographed ONLY.



#136A - 2003 Kenworth T800 Day Cab Truck (NP6864)

2003 Kenworth T800 Day Cab Truck (NP6864), Cat C-12 diesel engine (Fresh overhaul), 10 speed transmission, heat, air conditioning, Am/Fm radio, 4:11 rear ratio, 14,250# stamped weight, 22.5 tires, shows 623,286 miles. Notes: Overhaul With receipts. One Owner Truck. Item Location: Coal Valley, IL 61240 Equipment Sold "AS IS, WHERE IS": All equipment/property is sold "AS IS, WHERE IS" with no warranty or guarantees, expressed or implied, No operational assessments have been made by DPA Auctions on this item, it has been photographed ONLY.



#137 - 2014 CaseIH Titan 4530 Dry Floater (NP6821)

2014 CaseIH Titan 4530 Dry Floater (NP6821), CaseIH 8.7L diesel engine, Allison automatic transmission, heat, air conditioning, Am/Fm radio, power mirrors, leather seats, CaseIH Flex-Air 810 dry air flow system (S/N YET038933), 70' boom, Agri-Cover electric tarp, 1050/50R32 rear tires, 750/45R26.5 front tires, Raven Viper 4 controller, shows 1,728 hours. Notes: Item Location: Stafford, KS 67578 Equipment Sold "AS IS, WHERE IS": All equipment/property is sold "AS IS, WHERE IS" with no warranty or guarantees, expressed or implied, No operational assessments have been made by DPA Auctions on this item, it has been photographed ONLY.



#138 - 2004 John Deere 9860STS Combine (NP6818)

2004 John Deere 9860STS Combine (NP6818), 4x4, John Deere diesel engine, heat, air conditioning, Am/Fm radio, buddy seat, 18.4R42 front duals, 18.4R26 rear tires, John Deere brown box, shows 3,553 engine hours, shows 2,485 separator hours. Notes: Combine had approx. \$30,000 of work done in the Fall of 2017, always shedded. Item Location: Tribune, KS 67879 Equipment Sold "AS IS, WHERE IS": All equipment/property is sold "AS IS, WHERE IS" with no warranty or guarantees, expressed or implied, No operational assessments have been made by DPA Auctions on this item, it has been photographed ONLY.



#139 - 2004 John Deere 936D Draper Head (NP6816)

2004 John Deere 936D Draper Head (NP6816), 36' head. Notes: Item Location: Tribune, KS 67879 Equipment Sold "AS IS, WHERE IS": All equipment/property is sold "AS IS, WHERE IS" with no warranty or guarantees, expressed or implied, No operational assessments have been made by DPA Auctions on this item, it has been photographed ONLY.



#140 - 1995 John Deere 1293 Corn Head (NP6817)

1995 John Deere 1293 Corn Head (NP6817), 12 row. Notes: Item Location: Tribune, KS 67879 Equipment Sold "AS IS, WHERE IS": All equipment/property is sold "AS IS, WHERE IS" with no warranty or guarantees, expressed or implied, No operational assessments have been made by DPA Auctions on this item, it has been photographed ONLY.



#142 - 1992 Kenworth Dry Tender Truck (NP6826, Unit 217)

1992 Kenworth Dry Tender Truck (NP6826, Unit 217), Cummins N14-350E diesel engine, manual transmission, heat, air conditioning, Am/Fm radio, cruise, tandem axle, air ride suspension, Willmar 1600 dry tender box (S/N 1600JMSS154), rear discharge auger, hydraulic, Agri-Cover electric roll tarp, 11R22.5 tires, shows 772,972 miles. Notes: Item Location: Andale, KS 67001 Equipment Sold "AS IS, WHERE IS": All equipment/property is sold "AS IS, WHERE IS" with no warranty or guarantees, expressed or implied, No operational assessments have been made by DPA Auctions on this item, it has been photographed ONLY.



#143 - Rail Car Hopper Slide Gate Opener (NP6833)

Rail Car Hopper Slide Gate Opener (NP6833), 1.5HP 1Q motor, 230v, 20' long remote hand control cord, PTO extends from 39" to 62", mounted on a 6" x 20" I-Beam sliding carriage (included), very good condition, seller will load. Notes: Item is in very good condition, seller will load. Item Location: Alma, NE 68920 Equipment Sold "AS IS, WHERE IS": All equipment/property is sold "AS IS, WHERE IS" with no warranty or guarantees, expressed or implied, No operational assessments have been made by DPA Auctions on this item, it has been photographed ONLY.



#144 - Terminator Pressure Washer (NP6837)

Terminator Pressure Washer (NP6837), portable, hose reel. Notes: Item Location: Rockwell City, IA 50579 Equipment Sold "AS IS, WHERE IS": All equipment/property is sold "AS IS, WHERE IS" with no warranty or guarantees, expressed or implied, No operational assessments have been made by DPA Auctions on this item, it has been photographed ONLY.



#145 - 2016 PUMA Belly Dump Trailer (NEW) (NP6830)

2016 PUMA Belly Dump Trailer (NEW) (NP6830), 42' length, 23.5 cubic yards, 8" bang boards, tandem axle, commercial grade gates with chain stops, electric controlled from cab of truck and manual from ground, 7" air cylinder, hopper 58" x 108" opening double gate w/ 3/16" plate w/ 3/16" side walls, 11R24.5 tires, Duro Thane 4 spring 3 leaf suspension, electric tarp switch from cab of truck. Notes: Item Location: Grand Junction, IA 50107 Equipment Sold "AS IS, WHERE IS": All equipment/property is sold "AS IS, WHERE IS" with no warranty or guarantees, expressed or implied, No operational assessments have been made by DPA Auctions on this item, it has been photographed ONLY.



#146 - 1999 International 8100 Flatbed Truck (NP6834)

1999 International 8100 Flatbed Truck (NP6834), Cummins diesel engine, 9 speed transmission, heat, air conditioning, Am/Fm radio, cruise, tandem axle, full screw, air ride suspension, Brehmer 24' steel flatbed (used very little), shows 522,605 miles. Notes: Slashed tire shown in pictures will be replaced before auction date. Item Location: Thurston, NE 68062 Equipment Sold "AS IS, WHERE IS": All equipment/property is sold "AS IS, WHERE IS" with no warranty or guarantees, expressed or implied, No operational assessments have been made by DPA Auctions on this item, it has been photographed ONLY.



#147 - 2009 RoGator 1286C Dry Machine (PZ9548)

2009 RoGator 1286C Dry Machine (PZ9548), Cat diesel engine, hydrostatic transmission, air conditioning, heat, Am/Fm radio, New Leader L4330 G4 dry spreader box (5 year old box), all hydraulic, electric roll over tarp, Alliance 380/90R46 row crop tires, Mitas 650/65R38 flotation tires, Raven Viper Pro monitor, Raven SmarTrax, Raven GPS, shows 3300 hours. Notes: Item Location: Harristown, IL 62537 Equipment Sold "AS IS, WHERE IS": All equipment/property is sold "AS IS, WHERE IS" with no warranty or guarantees, expressed or implied, No operational assessments have been made by DPA Auctions on this item, it has been photographed ONLY.



#148 - Portable Belt Conveyor (NP6804)

Portable Belt Conveyor (NP6804), ribbed belt, approx. 90' length, (2) flat tires, PTO driven. Notes: Item Location: Philip, SD 57567 Equipment Sold "AS IS, WHERE IS": All equipment/property is sold "AS IS, WHERE IS" with no warranty or guarantees, expressed or implied, No operational assessments have been made by DPA Auctions on this item, it has been photographed ONLY.



#149 - Anhydrous Valves/Parts (NJP1241)

Anhydrous Valves/Parts (NJP1241). Notes: Item Location: Pierre, SD 57501 Equipment Sold "AS IS, WHERE IS": All equipment/property is sold "AS IS, WHERE IS" with no warranty or guarantees, expressed or implied, No operational assessments have been made by DPA Auctions on this item, it has been photographed ONLY.



#150 - Anhydrous Valves/Parts (NJP1242)

Anhydrous Valves/Parts (NJP1242). Notes: Item Location: Pierre, SD 57501 Equipment Sold "AS IS, WHERE IS": All equipment/property is sold "AS IS, WHERE IS" with no warranty or guarantees, expressed or implied, No operational assessments have been made by DPA Auctions on this item, it has been photographed ONLY.



#151 - Pump/Hose/Electric Motor (NJP1243)

Pump/Hose/Electric Motor (NJP1243). Notes: Item Location: Pierre, SD 57501 Equipment Sold "AS IS, WHERE IS": All equipment/property is sold "AS IS, WHERE IS" with no warranty or guarantees, expressed or implied, No operational assessments have been made by DPA Auctions on this item, it has been photographed ONLY.



#152 - NH3 Tank (NJP1249, Unit 41)

NH3 Tank (NJP1249, Unit 41), 1,000 gallon capacity, top front fill, 4 wheel gear, 14.1-16.1 flotation tires, water tank. Notes: Item Location: Pierre, SD 57501 Equipment Sold "AS IS, WHERE IS": All equipment/property is sold "AS IS, WHERE IS" with no warranty or guarantees, expressed or implied, No operational assessments have been made by DPA Auctions on this item, it has been photographed ONLY.



#153 - Double NH3 Tank (NJP1250)

Double NH3 Tank (NJP1250), 1,000 gallon capacity each, top front fills, pump & motor, P&H 4 wheel gear, 16.5L-16.1 flotation tires, water tank. Notes: Item Location: Pierre, SD 57501 Equipment Sold "AS IS, WHERE IS": All equipment/property is sold "AS IS, WHERE IS" with no warranty or guarantees, expressed or implied, No operational assessments have been made by DPA Auctions on this item, it has been photographed ONLY.



#154 - Tyler Dry Tender Box (NJP1251)

Tyler Dry Tender Box (NJP1251), 16 ton capacity, rear discharge auger, manual roll tarp, hydraulic. Notes: Item Location: Pierre, SD 57501 Equipment Sold "AS IS, WHERE IS": All equipment/property is sold "AS IS, WHERE IS" with no warranty or guarantees, expressed or implied, No operational assessments have been made by DPA Auctions on this item, it has been photographed ONLY.



#155 - (2) Westfield Bin Augers (NJP1240)

(2) Westfield Bin Augers (NJP1240), 8" x 21', 7.5HP motors. Notes: Item Location: Pierre, SD 57501 Equipment Sold "AS IS, WHERE IS": All equipment/property is sold "AS IS, WHERE IS" with no warranty or guarantees, expressed or implied, No operational assessments have been made by DPA Auctions on this item, it has been photographed ONLY.



#156 - (6) HI TEC Bags (NJP1262)

(6) HI TEC Bags (NJP1262), approx. 10' x 500' each. Notes: Item Location: Pierre, SD 57501 Equipment Sold "AS IS, WHERE IS": All equipment/property is sold "AS IS, WHERE IS" with no warranty or guarantees, expressed or implied, No operational assessments have been made by DPA Auctions on this item, it has been photographed ONLY.



#157 - 2010 CaseIH Patriot 4420 Sprayer (NJP1264, Unit 143)

2010 CaseIH Patriot 4420 Sprayer (NJP1264, Unit 143), diesel engine, hydrostatic transmission, heat, air conditioning, Am/Fm CD radio, 1,200 gallon stainless steel liquid system, 100' boom, top poly rinse tank, stainless steel chemical inductor, pump, 380/90R46 tires, AIM command, Trimble CFX-750, Raven Viper Pro, shows 3,879 hours. Notes: Item Location: Pierre, SD 57501 Equipment Sold "AS IS, WHERE IS": All equipment/property is sold "AS IS, WHERE IS" with no warranty or guarantees, expressed or implied, No operational assessments have been made by DPA Auctions on this item, it has been photographed ONLY.



#158 - 2000 International 4900 Dry Tender Truck (NP6827, Unit 212)

2000 International 4900 Dry Tender Truck (NP6827, Unit 212), IHC diesel engine, Eaton Fuller manual transmission, heat, air conditioning, Am/Fm radio, cruise, single axle, air ride suspension, Willmar Loadrunner 10 dry tender box (S/N LRR10JRSS114), rear discharge auger, hydraulic, electric roll tarp, 11R22.5 tires, shows 7,856 miles, shows 2,934 hours. Notes: Item Location: Andale, KS 67001 Equipment Sold "AS IS, WHERE IS": All equipment/property is sold "AS IS, WHERE IS" with no warranty or guarantees, expressed or implied, No operational assessments have been made by DPA Auctions on this item, it has been photographed ONLY.



#161 - 2015 CaseIH Patriot 4440 Sprayer (NP6825)

2015 CaseIH Patriot 4440 Sprayer (NP6825), CaseIH diesel engine, hydrostatic transmission, heat, air conditioning, Am/Fm radio, power mirrors, buddy seat, 1,200 gallon stainless steel liquid system, 5-way nozzle bodies, top poly rinse tank, stainless steel chemical inductor, 380/90R46 tires, CAPSTAN PinPoint System (S/N PP00338), Raven Viper 4 controller, shows 2,744 hours. Notes: Item Location: Stafford, KS 67578 Equipment Sold "AS IS, WHERE IS": All equipment/property is sold "AS IS, WHERE IS" with no warranty or guarantees, expressed or implied, No operational assessments have been made by DPA Auctions on this item, it has been photographed ONLY.



#162 - Spring Suspension (NP6835)

Spring Suspension (NP6835), for Circle R side dump trailer. Notes: Item Location: Thurston, NE 68062 Equipment Sold "AS IS, WHERE IS": All equipment/property is sold "AS IS, WHERE IS" with no warranty or guarantees, expressed or implied, No operational assessments have been made by DPA Auctions on this item, it has been photographed ONLY.



#163 - High Capacity Side Wall (NP6836)

High Capacity Side Wall (NP6836), for 34' tub for Circle R side dump trailer model year 2002 or newer. Notes: Item Location: Thurston, NE 68062 Equipment Sold "AS IS, WHERE IS": All equipment/property is sold "AS IS, WHERE IS" with no warranty or guarantees, expressed or implied, No operational assessments have been made by DPA Auctions on this item, it has been photographed ONLY.



#164 - 1967 Trinity NH3 Transport Trailer (PZ9232, Unit 906)

1967 Trinity NH3 Transport Trailer (PZ9232, Unit 906), 1967 Trinity 9,185 gallon NH3 transport trailer, tandem axle, spring suspension, pump, volume gauge, data plate, fenders, National Board Number 25941. Notes: Item Location: Brownstown, IL 62418 Equipment Sold "AS IS, WHERE IS": All equipment/property is sold "AS IS, WHERE IS" with no warranty or guarantees, expressed or implied, No operational assessments have been made by DPA Auctions on this item, it has been photographed ONLY.



#165 - Hyster H80XL Forklift (MH280)

Hyster H80XL Forklift (MH280), gas engine, automatic transmission, canopy, 7.50-15 front dual tires, 7.00-12 rear tires, approx. weight 12,550lb., load height approx. 14ft, shows 4104 hours. Notes: Item Location: Elwood, KS 66024 Equipment Sold "AS IS, WHERE IS": All equipment/property is sold "AS IS, WHERE IS" with no warranty or guarantees, expressed or implied, No operational assessments have been made by DPA Auctions on this item, it has been photographed ONLY.



#166 - 1996 Freightliner Truck (PZ9495)

1996 Freightliner Truck (PZ9495), diesel engine, 9 speed transmission, air conditioning, heat, Am/Fm radio, tandem axle, full screw, air ride suspension, shows 534,279 miles. Notes: Item Location: New Berlin, IL 62670 Equipment Sold "AS IS, WHERE IS": All equipment/property is sold "AS IS, WHERE IS" with no warranty or guarantees, expressed or implied, No operational assessments have been made by DPA Auctions on this item, it has been photographed ONLY.



#167 - Stainless Steel Liquid Nurse Trailer (NJP1257)

Stainless Steel Liquid Nurse Trailer (NJP1257), 2,000 gallon capacity, tandem axle gear, front platform, (2) Ace Roto-Mold cone bottom inductor tanks, 295/75R22.5 tires. Notes: Item Location: Pierre, SD 57501 Equipment Sold "AS IS, WHERE IS": All equipment/property is sold "AS IS, WHERE IS" with no warranty or guarantees, expressed or implied, No operational assessments have been made by DPA Auctions on this item, it has been photographed ONLY.



#168 - Michigan Clark 55B Wheel Loader (NJP1263)

Michigan Clark 55B Wheel Loader (NJP1263), 2 Stroke diesel engine, bucket, 17.5-25 tires, shows 8,085 hours. Notes: This loader has engine problems, contact seller for more details. Item Location: Pierre, SD 57501 Equipment Sold "AS IS, WHERE IS": All equipment/property is sold "AS IS, WHERE IS" with no warranty or guarantees, expressed or implied, No operational assessments have been made by DPA Auctions on this item, it has been photographed ONLY.



#169 - (2) 3 Drawer File Cabinets (NJP1244)

(2) 3 Drawer File Cabinets (NJP1244), fire proof. Notes: Item Location: Pierre, SD 57501 Equipment Sold "AS IS, WHERE IS": All equipment/property is sold "AS IS, WHERE IS" with no warranty or guarantees, expressed or implied, No operational assessments have been made by DPA Auctions on this item, it has been photographed ONLY.



#170 - (2) Flotation Tires (NJP1245)

(2) Flotation Tires (NJP1245), size 66x23.00-25, 65% tread. Notes: Item Location: Pierre, SD 57501 Equipment Sold "AS IS, WHERE IS": All equipment/property is sold "AS IS, WHERE IS" with no warranty or guarantees, expressed or implied, No operational assessments have been made by DPA Auctions on this item, it has been photographed ONLY.



#171 - Sprayer Cradle For Flabted Trailer (NJP1253)

Sprayer Cradle For Flabted Trailer (NJP1253), used on 102" trailer, with extended sides, poly cone bottom inductor tank. Notes: Item Location: Pierre, SD 57501 Equipment Sold "AS IS, WHERE IS": All equipment/property is sold "AS IS, WHERE IS" with no warranty or guarantees, expressed or implied, No operational assessments have been made by DPA Auctions on this item, it has been photographed ONLY.



#172 - 1989 Kenworth Cab/Chassis (NJP1258)

1989 Kenworth Cab/Chassis (NJP1258), Cummins diesel engine, Eaton Fuller transmission, heat, Am/Fm radio, tandem axle, spring suspension, 285/75R24.5 tires. Notes: This truck runs rough, please contact seller for more details. Item Location: Pierre, SD 57501 Equipment Sold "AS IS, WHERE IS": All equipment/property is sold "AS IS, WHERE IS" with no warranty or guarantees, expressed or implied, No operational assessments have been made by DPA Auctions on this item, it has been photographed ONLY.



#173 - 1989 Kenworth Dry Tender Truck (NJP1259, Unit 341)

1989 Kenworth Dry Tender Truck (NJP1259, Unit 341), Cummins 365 diesel engine, manual transmission, heat, tandem axle, air ride suspension, Tyler dry tender box, side discharge auger, hydraulic, 285/75R24.5 tires, shows 348,948 miles. Notes: This truck DOES NOT run, please contact seller for more details. Item Location: Pierre, SD 57501 Equipment Sold "AS IS, WHERE IS": All equipment/property is sold "AS IS, WHERE IS" with no warranty or guarantees, expressed or implied, No operational assessments have been made by DPA Auctions on this item, it has been photographed ONLY.



#174 - International Dry Tender Truck (NJP1260, Unit 312)

International Dry Tender Truck (NJP1260, Unit 312), gas engine, 5x2 transmission, heat, AM radio, tandem axle, spring suspension, Tyler dry tender box, rear discharge auger, manual flip tarp, 10.00-20 tires. Notes: Operational condition unknown, please contact seller for more details. Item Location: Pierre, SD 57501 Equipment Sold "AS IS, WHERE IS": All equipment/property is sold "AS IS, WHERE IS" with no warranty or guarantees, expressed or implied, No operational assessments have been made by DPA Auctions on this item, it has been photographed ONLY.



#175 - 2003 Chevrolet Impala Sedan (NJP1254)

2003 Chevrolet Impala Sedan (NJP1254), 3400 SFI gas engine, automatic transmission, heat, air conditioning, Am/Fm CD radio, dual climate control, cruise, cloth interior, power windows, locks and mirrors, P225/60R16 tires, shows 271,118 miles. Notes: This vehicle runs rough. Contact seller for more details. Item Location: Pierre, SD 57501 Equipment Sold "AS IS, WHERE IS": All equipment/property is sold "AS IS, WHERE IS" with no warranty or guarantees, expressed or implied, No operational assessments have been made by DPA Auctions on this item, it has been photographed ONLY.



#176 - 2013 Chevrolet Captiva (NJP1255)

2013 Chevrolet Captiva (NJP1255), 4 door, Ecotec gas engine, automatic transmission, heat, air conditioning, Am/Fm CD radio, power windows, locks and mirrors, shows 135,050 miles. Notes: This vehicle DOES NOT RUN, contact seller for more details. Item Location: Pierre, SD 57501 Equipment Sold "AS IS, WHERE IS": All equipment/property is sold "AS IS, WHERE IS" with no warranty or guarantees, expressed or implied, No operational assessments have been made by DPA Auctions on this item, it has been photographed ONLY.



#177 - 1987 Chevrolet 1/2 Ton Pickup (NJP1256, Unit 171)

1987 Chevrolet 1/2 Ton Pickup (NJP1256, Unit 171), regular cab, gas engine, manual transmission, heat, ag bumper, 235/85R16 tires, shows 44,548 miles. Notes: Item Location: Pierre, SD 57501 Equipment Sold "AS IS, WHERE IS": All equipment/property is sold "AS IS, WHERE IS" with no warranty or guarantees, expressed or implied, No operational assessments have been made by DPA Auctions on this item, it has been photographed ONLY.



#178 - 1989 Chevrolet 2500 4x4 Pickup (NJP1261, Unit 301)

1989 Chevrolet 2500 4x4 Pickup (NJP1261, Unit 301), regular cab, manual transmission, heat, air conditioning, Am/Fm radio, DMI ag bumper, LT245/75R16 tires, shows 152,200 miles. Notes: No Tailgate, This pickup DOES NOT RUN, please contact seller for more details. Item Location: Pierre, SD 57501 Equipment Sold "AS IS, WHERE IS": All equipment/property is sold "AS IS, WHERE IS" with no warranty or guarantees, expressed or implied, No operational assessments have been made by DPA Auctions on this item, it has been photographed ONLY.



#179 - Tandem Axle/Air Suspension (NJP1246)

Tandem Axle/Air Suspension (NJP1246), cut off air suspension and axle off a trailer, 295/75R22.5 tires. Notes: Item Location: Pierre, SD 57501 Equipment Sold "AS IS, WHERE IS": All equipment/property is sold "AS IS, WHERE IS" with no warranty or guarantees, expressed or implied, No operational assessments have been made by DPA Auctions on this item, it has been photographed ONLY.



#180 - Dual 3100 Front End Hydraulic Loader (NJP1247)

Dual 3100 Front End Hydraulic Loader (NJP1247), bucket. Notes: Item Location: Pierre, SD 57501 Equipment Sold "AS IS, WHERE IS": All equipment/property is sold "AS IS, WHERE IS" with no warranty or guarantees, expressed or implied, No operational assessments have been made by DPA Auctions on this item, it has been photographed ONLY.



#181 - Truck Flatbed (NJP1248)

Truck Flatbed (NJP1248), 16' length, with 5th wheel ball. Notes: Item Location: Pierre, SD 57501 Equipment Sold "AS IS, WHERE IS": All equipment/property is sold "AS IS, WHERE IS" with no warranty or guarantees, expressed or implied, No operational assessments have been made by DPA Auctions on this item, it has been photographed ONLY.



#182 - DTA360 Diesel Engine/Tranny (NJP1252)

DTA360 Diesel Engine/Tranny (NJP1252). Notes: Item Location: Pierre, SD 57501 Equipment Sold "AS IS, WHERE IS": All equipment/property is sold "AS IS, WHERE IS" with no warranty or guarantees, expressed or implied, No operational assessments have been made by DPA Auctions on this item, it has been photographed ONLY.



#183 - Blu Jet NH3 Tool Bar (PZ9492, Unit 152376)

Blu Jet NH3 Tool Bar (PZ9492, Unit 152376), Blu Jet LandRunner 17 knife pull type tool bar, coulters, double disc sealer, Raven Super cooler, hydraulic wings, 11L-15 flotation tires, rear hitch. Notes: No monitor. Item Location: Adair, IA 50002 Equipment Sold "AS IS, WHERE IS": All equipment/property is sold "AS IS, WHERE IS" with no warranty or guarantees, expressed or implied, No operational assessments have been made by DPA Auctions on this item, it has been photographed ONLY.



#184 - DMI 5250 NH3 Tool Bar (PZ9478, Unit 21028)

DMI 5250 NH3 Tool Bar (PZ9478, Unit 21028), DMI 5250 19 knife pull type tool bar, coulters, double disc sealers, Raven Super cooler, walking tandems, hydraulic wings, 11L-15 flotation tires, rear hitch. Notes: Item Location: Greene, IA 50636 Equipment Sold "AS IS, WHERE IS": All equipment/property is sold "AS IS, WHERE IS" with no warranty or guarantees, expressed or implied, No operational assessments have been made by DPA Auctions on this item, it has been photographed ONLY.



#185 - NH3 1000 gallon Nurse Tank (PZ9483, Unit 20779)

NH3 1000 gallon Nurse Tank (PZ9483, Unit 20779), 1000 gallon NH3 nurse tank, top front fill, 5th wheel gear, side poly water tank, DOT-SP 13554, 11L-15 flotation tires, no data plate. Notes: Item Location: Plainfield, IA 50666 Equipment Sold "AS IS, WHERE IS": All equipment/property is sold "AS IS, WHERE IS" with no warranty or guarantees, expressed or implied, No operational assessments have been made by DPA Auctions on this item, it has been photographed ONLY.



#186 - Fuel Tank (PZ9480)

Fuel Tank (PZ9480), 500 gallon fuel tank, GPI MR 5-30 fuel meter/pump. Notes: Item Location: Greene, IA 50636 Equipment Sold "AS IS, WHERE IS": All equipment/property is sold "AS IS, WHERE IS" with no warranty or guarantees, expressed or implied, No operational assessments have been made by DPA Auctions on this item, it has been photographed ONLY.



#187 - Fuel Tank (PZ9481)

Fuel Tank (PZ9481), 500 gallon fuel tank, fuel gauge, meter/pump. Notes: Item Location: Greene, IA 50636 Equipment Sold "AS IS, WHERE IS": All equipment/property is sold "AS IS, WHERE IS" with no warranty or guarantees, expressed or implied, No operational assessments have been made by DPA Auctions on this item, it has been photographed ONLY.



#188 - Fuel Tank (PZ9482)

Fuel Tank (PZ9482), 250 gallon fuel tank, fuel gauge, pump. Notes: Item Location: Greene, IA 50636 Equipment Sold "AS IS, WHERE IS": All equipment/property is sold "AS IS, WHERE IS" with no warranty or guarantees, expressed or implied, No operational assessments have been made by DPA Auctions on this item, it has been photographed ONLY.



#189 - 4'x4' Scale (PZ9479)

4'x4' Scale (PZ9479), 4'x4' Platform scale, B-TEK BT84 digital readout. Notes: Item Location: Greene, IA 50636 Equipment Sold "AS IS, WHERE IS": All equipment/property is sold "AS IS, WHERE IS" with no warranty or guarantees, expressed or implied, No operational assessments have been made by DPA Auctions on this item, it has been photographed ONLY.



#190 - 2005 GVM Predator 1146T Spreader (PD838)

2005 GVM Predator 1146T Spreader (PD838), 5.9L Cummins, Automatic, Air, AM/FM, Raven 660 Controller w/ GPS Speed sensor, 6 Ton capacity, air seat, has one year old belt over chain in box, has lime or fertilizer chute for back, additional 18.4/46 floaters, still in use, shows 4810 hours. Notes: Item Location: Owensville, MO 65066 Equipment Sold "AS IS, WHERE IS": All equipment/property is sold "AS IS, WHERE IS" with no warranty or guarantees, expressed or implied, No operational assessments have been made by DPA Auctions on this item, it has been photographed ONLY.



#191 - 2010 Blu-Jet AT 6010 44 Foot Covering Disk (PD834)

2010 Blu-Jet AT 6010 44 Foot Covering Disk (PD834), AA bar, John Deere controls, 5 section shutoffs, no till N-serve pump, all terrain injection, insert pump, John Deere monitor system, John Deere 3200 does not go with. Notes: Item Location: Rock Port, MO 64482 Equipment Sold "AS IS, WHERE IS": All equipment/property is sold "AS IS, WHERE IS" with no warranty or guarantees, expressed or implied, No operational assessments have been made by DPA Auctions on this item, it has been photographed ONLY.



#192 - 4 Michelin Floater Tires (PD837)

4 Michelin Floater Tires (PD837), tire size is 650/65R38, off of John Deere 4830. Notes: Item Location: Rock Port, MO 64482 Equipment Sold "AS IS, WHERE IS": All equipment/property is sold "AS IS, WHERE IS" with no warranty or guarantees, expressed or implied, No operational assessments have been made by DPA Auctions on this item, it has been photographed ONLY.



#193 - Westendorf Pallet Forks (DL272)

Westendorf Pallet Forks (DL272), Westendorf pallet forks, mast, quick tach, fits a W L - 42 loader. Notes: Item Location: Perry, IA 50220 Equipment Sold "AS IS, WHERE IS": All equipment/property is sold "AS IS, WHERE IS" with no warranty or guarantees, expressed or implied, No operational assessments have been made by DPA Auctions on this item, it has been photographed ONLY.



#194 - 2004 30' Gulfstream Conquest 5th Wheel Trailer (AL410)

2004 30' Gulfstream Conquest 5th Wheel Trailer (AL410), one slide, king bed in master bedroom, sleeps six, has outside shower, electric jack, bathroom and shower, kitchen sink, microwave, Coleman air conditioner, Maytag oven, Suburban furnace and water heater, outside storage compartments, electrical services 110/12 volts 30 amps, no propane tanks, tires are 90%, does not have a spare tire. Notes: Camper will need some TLC. Item Location: Moundville, MO 64771 Equipment Sold "AS IS, WHERE IS": All equipment/property is sold "AS IS, WHERE IS" with no warranty or guarantees, expressed or implied, No operational assessments have been made by DPA Auctions on this item, it has been photographed ONLY.



#195 - DMI 5300 NH3 Tool Bar (PZ9420, Unit 15111)

DMI 5300 NH3 Tool Bar (PZ9420, Unit 15111), DMI 5300 18 knife pull type tool bar, coulters, double disc sealers, Raven Super cooler, walking tandems, hydraulic wings, 12.5L-15 flotation tires, rear hitch. Notes: No monitor. Item Location: Lytton, IA 50561 Equipment Sold "AS IS, WHERE IS": All equipment/property is sold "AS IS, WHERE IS" with no warranty or guarantees, expressed or implied, No operational assessments have been made by DPA Auctions on this item, it has been photographed ONLY.



#196 - Blu Jet AT5000 NH3 Tool Bar (PZ9473, Unit 21418)

Blu Jet AT5000 NH3 Tool Bar (PZ9473, Unit 21418), Blu Jet AT5000 19 knife tool bar, GDI 200 ground driven pump, hydraulic wings, Firestone 12.4-38 tires, rear hitch. Notes: Item Location: Rake, IA 50465 Equipment Sold "AS IS, WHERE IS": All equipment/property is sold "AS IS, WHERE IS" with no warranty or guarantees, expressed or implied, No operational assessments have been made by DPA Auctions on this item, it has been photographed ONLY.



#197 - 1982 Polar Liquid Transport Trailer (PZ9474, Unit 21460)

1982 Polar Liquid Transport Trailer (PZ9474, Unit 21460), 1982 Polar 9050 gallon 4 compartment (2500-1200-1850-3500) aluminum transport trailer, fenders, Tuthill meter, Soter transfer pump tandem axle, spring suspension, 295/75R22.5 tires. Notes: Item Location: Rake, IA 50465 Equipment Sold "AS IS, WHERE IS": All equipment/property is sold "AS IS, WHERE IS" with no warranty or guarantees, expressed or implied, No operational assessments have been made by DPA Auctions on this item, it has been photographed ONLY.



#198 - 1973 Heil Liquid Transport Trailer (PZ9475, Unit 19062)

1973 Heil Liquid Transport Trailer (PZ9475, Unit 19062), 1973 Heil 6200 gallon 5 compartment (1700-1000-1000-1000-1500) stainless steel liquid transport trailer, fenders, tandem axle, spring suspension, 11R22.5 tires, aluminum rims. Notes: Item Location: Rake, IA 50465 Equipment Sold "AS IS, WHERE IS": All equipment/property is sold "AS IS, WHERE IS" with no warranty or guarantees, expressed or implied, No operational assessments have been made by DPA Auctions on this item, it has been photographed ONLY.



#199 - 1995 Freightliner Dry Tender Truck (PZ9476, Unit 21158/20913)

1995 Freightliner Dry Tender Truck (PZ9476, Unit 21158/20913), Cat diesel engine, 10 speed transmission, air conditioning, heat, cruise control, tandem axle, full screw, air ride suspension, Willmar 16 ton dry tender box, side discharge auger, roll over tarp, 11R22.5 tires. Notes: Item Location: Rake, IA 50465 Equipment Sold "AS IS, WHERE IS": All equipment/property is sold "AS IS, WHERE IS" with no warranty or guarantees, expressed or implied, No operational assessments have been made by DPA Auctions on this item, it has been photographed ONLY.



#200 - DMI 5250 NH3 Tool Bar (PZ9462, Unit 11920)

DMI 5250 NH3 Tool Bar (PZ9462, Unit 11920), DMI 5250 19 knife pull type tool bar, coulters, double disc sealers, Double Raven Super cooler, walking tandems, hydraulic wings, 11L-15 flotation tires, rear hitch. Notes: Item Location: Yale, IA 50277 Equipment Sold "AS IS, WHERE IS": All equipment/property is sold "AS IS, WHERE IS" with no warranty or guarantees, expressed or implied, No operational assessments have been made by DPA Auctions on this item, it has been photographed ONLY.



#201 - John Deere Load Command (PZ9465)

John Deere Load Command (PZ9465), John Deere load command. Notes: Item Location: Yale, IA 50277 Equipment Sold "AS IS, WHERE IS": All equipment/property is sold "AS IS, WHERE IS" with no warranty or guarantees, expressed or implied, No operational assessments have been made by DPA Auctions on this item, it has been photographed ONLY.



#202 - John Deere Load Command (PZ9466)

John Deere Load Command (PZ9466), John Deere load command. Notes: Item Location: Yale, IA 50277 Equipment Sold "AS IS, WHERE IS": All equipment/property is sold "AS IS, WHERE IS" with no warranty or guarantees, expressed or implied, No operational assessments have been made by DPA Auctions on this item, it has been photographed ONLY.



#203 - John Deere Load Command (PZ9467)

John Deere Load Command (PZ9467), John Deere load command. Notes: Item Location: Yale, IA 50277 Equipment Sold "AS IS, WHERE IS": All equipment/property is sold "AS IS, WHERE IS" with no warranty or guarantees, expressed or implied, No operational assessments have been made by DPA Auctions on this item, it has been photographed ONLY.



#204 - John Deere Load Command (PZ9468)

John Deere Load Command (PZ9468), John Deere load command. Notes: Item Location: Yale, IA 50277 Equipment Sold "AS IS, WHERE IS": All equipment/property is sold "AS IS, WHERE IS" with no warranty or guarantees, expressed or implied, No operational assessments have been made by DPA Auctions on this item, it has been photographed ONLY.



#205 - 2001 Kubota R420 Loader (PZ9463, Unit 11906)

2001 Kubota R420 Loader (PZ9463, Unit 11906), diesel engine, hydrostatic transmission, canopy, lights, 5' bucket, 12.5/70-16 tires, shows 2550 hours. Notes: Has starter issues. Please contact seller for more information. Item Location: Yale, IA 50277 Equipment Sold "AS IS, WHERE IS": All equipment/property is sold "AS IS, WHERE IS" with no warranty or guarantees, expressed or implied, No operational assessments have been made by DPA Auctions on this item, it has been photographed ONLY.



#206 - Good Year Flotation Tires (PZ9464)

Good Year Flotation Tires (PZ9464), 4 - Good Year 620/70R46 tires & rims. Notes: Item Location: Yale, IA 50277 Equipment Sold "AS IS, WHERE IS": All equipment/property is sold "AS IS, WHERE IS" with no warranty or guarantees, expressed or implied, No operational assessments have been made by DPA Auctions on this item, it has been photographed ONLY.



#207 - 1997 Willmar Dry Tender Box (PZ9421, Unit 13696)

1997 Willmar Dry Tender Box (PZ9421, Unit 13696), 1997 Willmar 16 ton dry tender box, side discharge auger, roll over tarp, good condition. Notes: Running gear NOT included. Item Location: Yetter, IA 51433 Equipment Sold "AS IS, WHERE IS": All equipment/property is sold "AS IS, WHERE IS" with no warranty or guarantees, expressed or implied, No operational assessments have been made by DPA Auctions on this item, it has been photographed ONLY.



#208 - 2002 Willmar Dry Tender Box (PZ9422, Unit 21802)

2002 Willmar Dry Tender Box (PZ9422, Unit 21802), 2002 Willmar 16 ton dry tender box, side discharge auger, roll over tarp. Notes: Running gear NOT included. Item Location: Yetter, IA 51433 Equipment Sold "AS IS, WHERE IS": All equipment/property is sold "AS IS, WHERE IS" with no warranty or guarantees, expressed or implied, No operational assessments have been made by DPA Auctions on this item, it has been photographed ONLY.



#209 - 1997 Willmar Dry Tender Box (PZ9423, Unit 14036)

1997 Willmar Dry Tender Box (PZ9423, Unit 14036), 1997 Willmar 16 ton dry tender box, side discharge auger, roll over tarp. Notes: Running gear NOT included. Item Location: Yetter, IA 51433 Equipment Sold "AS IS, WHERE IS": All equipment/property is sold "AS IS, WHERE IS" with no warranty or guarantees, expressed or implied, No operational assessments have been made by DPA Auctions on this item, it has been photographed ONLY.



#210 - 1987 IHC Dry Tender Truck (PZ9424, Unit 14495/14351)

1987 IHC Dry Tender Truck (PZ9424, Unit 14495/14351), diesel engine, automatic transmission, heat, radio, single axle, Willmar 10 ton dry tender box, rear discharge auger, all hydraulic, roll over tarp, 11R22.5 tires. Notes: Item Location: Yetter, IA 51433 Equipment Sold "AS IS, WHERE IS": All equipment/property is sold "AS IS, WHERE IS" with no warranty or guarantees, expressed or implied, No operational assessments have been made by DPA Auctions on this item, it has been photographed ONLY.



#211 - Willmar Dry Tender Box (PZ9426, Unit 10847)

Willmar Dry Tender Box (PZ9426, Unit 10847) Willmar 16 ton dry tender box, side discharge auger, roll over tarp. Notes: Running gear not included. Please contact seller for working condition of tender. Item Location: Farnhamville, IA 50538 Equipment Sold "AS IS, WHERE IS": All equipment/property is sold "AS IS, WHERE IS" with no warranty or guarantees, expressed or implied, No operational assessments have been made by DPA Auctions on this item, it has been photographed ONLY.



#212 - Willmar Dry Tender Box (PZ9428, Unit 10773)

Willmar Dry Tender Box (PZ9428, Unit 10773) Willmar 16 ton dry tender box, side discharge auger. Notes: Running gear not included. Please contact seller for working condition of tender. Item Location: Farnhamville, IA 50538 Equipment Sold "AS IS, WHERE IS": All equipment/property is sold "AS IS, WHERE IS" with no warranty or guarantees, expressed or implied, No operational assessments have been made by DPA Auctions on this item, it has been photographed ONLY.



#213 - Willmar Dry Tender Box (PZ9427, Unit 23682)

Willmar Dry Tender Box (PZ9427, Unit 23682) Willmar 16 ton dry tender box, side discharge auger, roll over tarp. Notes: Running gear not included. Please contact seller for working condition of tender. Item Location: Farnhamville, IA 50538 Equipment Sold "AS IS, WHERE IS": All equipment/property is sold "AS IS, WHERE IS" with no warranty or guarantees, expressed or implied, No operational assessments have been made by DPA Auctions on this item, it has been photographed ONLY.



#214 - Willmar Dry Tender Box (PZ9432, Unit 12129)

Willmar Dry Tender Box (PZ9432, Unit 12129) Willmar 16 ton dry tender box, side discharge auger, roll over tarp. Notes: Running gear not included. Please contact seller for working condition of tender. Item Location: Farnhamville, IA 50538 Equipment Sold "AS IS, WHERE IS": All equipment/property is sold "AS IS, WHERE IS" with no warranty or guarantees, expressed or implied, No operational assessments have been made by DPA Auctions on this item, it has been photographed ONLY.



#215 - Willmar Dry Tender Box (PZ9445, Unit 10702)

Willmar Dry Tender Box (PZ9445, Unit 10702) Willmar 16 ton dry tender box, side discharge auger, roll over tarp. Notes: Tender has not been used for over 10 years. Running gear NOT included. Item Location: Gowrie, IA 50543 Equipment Sold "AS IS, WHERE IS": All equipment/property is sold "AS IS, WHERE IS" with no warranty or guarantees, expressed or implied, No operational assessments have been made by DPA Auctions on this item, it has been photographed ONLY.



#216 - Willmar Dry Tender Box (PZ9446, Unit 13090)

Willmar Dry Tender Box (PZ9446, Unit 13090) Willmar 16 ton dry tender box, side discharge auger, roll over tarp. Notes: Tender has not been used for over 10 years. Running gear NOT included. Item Location: Gowrie, IA 50543 Equipment Sold "AS IS, WHERE IS": All equipment/property is sold "AS IS, WHERE IS" with no warranty or guarantees, expressed or implied, No operational assessments have been made by DPA Auctions on this item, it has been photographed ONLY.



#217 - Willmar Dry Tender Box (PZ9447, Unit 13140)

Willmar Dry Tender Box (PZ9447, Unit 13140) Willmar 16 ton dry tender box, side discharge auger, roll over tarp. Notes: Tender has not been used for over 10 years. Running gear NOT included. Item Location: Gowrie, IA 50543 Equipment Sold "AS IS, WHERE IS": All equipment/property is sold "AS IS, WHERE IS" with no warranty or guarantees, expressed or implied, No operational assessments have been made by DPA Auctions on this item, it has been photographed ONLY.



#218 - Liquid Nurse Tank (PZ9431)

Liquid Nurse Tank (PZ9431), 2000 gallon poly liquid nurse tank, steel cradle. Notes: Item Location: Farnhamville, IA 50538 Equipment Sold "AS IS, WHERE IS": All equipment/property is sold "AS IS, WHERE IS" with no warranty or guarantees, expressed or implied, No operational assessments have been made by DPA Auctions on this item, it has been photographed ONLY.



#219 - John Deere Load Command (PZ9434)

John Deere Load Command (PZ9434), John Deere load command. Notes: Item Location: Farnhamville, IA 50538 Equipment Sold "AS IS, WHERE IS": All equipment/property is sold "AS IS, WHERE IS" with no warranty or guarantees, expressed or implied, No operational assessments have been made by DPA Auctions on this item, it has been photographed ONLY.



#220 - John Deere Load Command (PZ9435)

John Deere Load Command (PZ9435), John Deere load command. Notes: Item Location: Farnhamville, IA 50538 Equipment Sold "AS IS, WHERE IS": All equipment/property is sold "AS IS, WHERE IS" with no warranty or guarantees, expressed or implied, No operational assessments have been made by DPA Auctions on this item, it has been photographed ONLY.



#221 - John Deere Load Command (PZ9436)

John Deere Load Command (PZ9436), John Deere load command. Notes: Item Location: Farnhamville, IA 50538 Equipment Sold "AS IS, WHERE IS": All equipment/property is sold "AS IS, WHERE IS" with no warranty or guarantees, expressed or implied, No operational assessments have been made by DPA Auctions on this item, it has been photographed ONLY.



#222 - John Deere Load Command (PZ9437)

John Deere Load Command (PZ9437), John Deere load command. Notes: Item Location: Farnhamville, IA 50538 Equipment Sold "AS IS, WHERE IS": All equipment/property is sold "AS IS, WHERE IS" with no warranty or guarantees, expressed or implied, No operational assessments have been made by DPA Auctions on this item, it has been photographed ONLY.



#223 - John Deere Load Command (PZ9438)

John Deere Load Command (PZ9438), John Deere load command. Notes: Item Location: Farnhamville, IA 50538 Equipment Sold "AS IS, WHERE IS": All equipment/property is sold "AS IS, WHERE IS" with no warranty or guarantees, expressed or implied, No operational assessments have been made by DPA Auctions on this item, it has been photographed ONLY.



#224 - Liquid Nurse Tank (PZ9448, Unit 17648)

Liquid Nurse Tank (PZ9448, Unit 17648), 2100 gallon poly liquid nurse tank, caddle, poly chemical inductor, 18' flatbed platform. Notes: Item Location: Gowrie, IA 50543 Equipment Sold "AS IS, WHERE IS": All equipment/property is sold "AS IS, WHERE IS" with no warranty or guarantees, expressed or implied, No operational assessments have been made by DPA Auctions on this item, it has been photographed ONLY.



#225 - 2001 Par-Kan Weigh Wagon (PZ9425, Unit 17501)

2001 Par-Kan Weigh Wagon (PZ9425, Unit 17501), 2001 Par-Kan model GW150 weigh wagon, single axle, side discharge auger, all hydraulic, Briggs & Stratton 18hp electric start gas engine, Weigh Tronix model 715 digital readout, roll over tarp, 12-16.5LT tires, shows 195 hours. Notes: Item Location: Farnhamville, IA 50538 Equipment Sold "AS IS, WHERE IS": All equipment/property is sold "AS IS, WHERE IS" with no warranty or guarantees, expressed or implied, No operational assessments have been made by DPA Auctions on this item, it has been photographed ONLY.



#226 - 1965 Load King Lowboy Trailer (PZ9433, Unit 12415)

1965 Load King Lowboy Trailer (PZ9433, Unit 12415), 1965 Load King 25 ton lowboy trailer, 8' top deck, 22' main deck, 21" beaver tail, D rings, tandem axle, 8.25R15 tires. Notes: Item Location: Farnhamville, IA 50538 Equipment Sold "AS IS, WHERE IS": All equipment/property is sold "AS IS, WHERE IS" with no warranty or guarantees, expressed or implied, No operational assessments have been made by DPA Auctions on this item, it has been photographed ONLY.



#227 - 1996 Freightliner Truck (PZ9439, Unit 12474)

1996 Freightliner Truck (PZ9439, Unit 12474), Cummins M11 diesel engine, 10 speed transmission, air conditioning, heat, Am/Fm cassette radio, cruise control, engine brake, tandem axle, full screw, air ride suspension, 295/75R22.5 tires, shows 738,471 miles. Notes: Item Location: Farnhamville, IA 50538 Equipment Sold "AS IS, WHERE IS": All equipment/property is sold "AS IS, WHERE IS" with no warranty or guarantees, expressed or implied, No operational assessments have been made by DPA Auctions on this item, it has been photographed ONLY.



#228 - 1985 Mack Econodyne R688ST Truck (PZ9441, Unit 12647)

1985 Mack Econodyne R688ST Truck (PZ9441, Unit 12647) Mack diesel engine, 9 speed transmission, heat, Am/Fm cassette radio, tandem axle, full screw, cheater axle, 425/65R22.5 front tires, 11R22.5 rear tires, 255/70R22.5 cheater tires, shows 793,164 miles. Notes: Drivers window stays down. Item Location: Farnhamville, IA 50538 Equipment Sold "AS IS, WHERE IS": All equipment/property is sold "AS IS, WHERE IS" with no warranty or guarantees, expressed or implied, No operational assessments have been made by DPA Auctions on this item, it has been photographed ONLY.



#229 - 1999 Mack MaxiCruise CH613 Truck (PZ9442, Unit 17515)

1999 Mack MaxiCruise CH613 Truck (PZ9442, Unit 17515) Mack E7-355/380 diesel engine, automatic transmission, air conditioning, heat, Am/Fm CD stereo, cruise control, engine brake, tandem axle, full screw, cheater axle, air ride suspension, (dry tender box is NOT selling with truck it will be removed), 285/75R24.5 tires, 295/75R22.5 cheater tires, shows 530,332 miles, 25,054 hours. Notes: Dry tender box is NOT selling with truck. It will be removed. Item Location: Farnhamville, IA 50538 Equipment Sold "AS IS, WHERE IS": All equipment/property is sold "AS IS, WHERE IS" with no warranty or guarantees, expressed or implied, No operational assessments have been made by DPA Auctions on this item, it has been photographed ONLY.



#230 - Steel Platform (PZ9430)

Steel Platform (PZ9430), Approx. 20' steel truck platform. Notes: Item Location: Farnhamville, IA 50538 Equipment Sold "AS IS, WHERE IS": All equipment/property is sold "AS IS, WHERE IS" with no warranty or guarantees, expressed or implied, No operational assessments have been made by DPA Auctions on this item, it has been photographed ONLY.



#231 - Phoenix Maxi-Clean Grain Cleaner (PZ9444, Unit 17102)

Phoenix Maxi-Clean Grain Cleaner (PZ9444, Unit 17102), Phoenix Maxi-Clean grain cleaner (S/N GC4B045), electric motor, Agron M2 digital tachometer, extra screens, 2002 Select tandem axle trailer, ST225/75R15 tires. Notes: Item Location: Farnhamville, IA 50538 Equipment Sold "AS IS, WHERE IS": All equipment/property is sold "AS IS, WHERE IS" with no warranty or guarantees, expressed or implied, No operational assessments have been made by DPA Auctions on this item, it has been photographed ONLY.



#232 - New Idea Grain Piler (PZ9477, Unit 10483)

New Idea Grain Piler (PZ9477, Unit 10483), New Idea model 803C grain piler, Cummins diesel engine, manual transmission, air conditioning, heat, Am/Fm radio, cab, lights, cab cam, Linquist conveyor, 3' wide conveyor, 23.1-26 front tires, 18.4-16.1 & 16.5L-16.1SL rear tires. Notes: Item Location: Thompson, IA 50478 Equipment Sold "AS IS, WHERE IS": All equipment/property is sold "AS IS, WHERE IS" with no warranty or guarantees, expressed or implied, No operational assessments have been made by DPA Auctions on this item, it has been photographed ONLY.



#233 - John Deere Load Command (PZ9488)

John Deere Load Command (PZ9488) John Deere load command, bought used but never used. Notes: Item Location: Altoona, IA 50009 Equipment Sold "AS IS, WHERE IS": All equipment/property is sold "AS IS, WHERE IS" with no warranty or guarantees, expressed or implied, No operational assessments have been made by DPA Auctions on this item, it has been photographed ONLY.



#234 - 2007 B-B Dry Tender Trailer (PZ9485, Unit 18180)

2007 B-B Dry Tender Trailer (PZ9485, Unit 18180), 2007 B-B dry tender trailer, Willmar 24 ton dry tender box (S/N AGCW24SSCNS001011), side discharge auger, roll over tarp, tandem axle, cheater axle, 255/70R22.5 tires, 235/75R17.5 cheater tires. Notes: Item Location: Collins, IA 50055 Equipment Sold "AS IS, WHERE IS": All equipment/property is sold "AS IS, WHERE IS" with no warranty or guarantees, expressed or implied, No operational assessments have been made by DPA Auctions on this item, it has been photographed ONLY.



#235 - 1999 Mack CH613 Truck (PZ9486, Unit 10641)

1999 Mack CH613 Truck (PZ9486, Unit 10641), Mack diesel engine, 9 speed transmission, air conditioning, heat, cruise control, engine brake, tandem axle, full screw, 11R22.5 tires, shows 395,092 miles, 15,968 hours. Notes: Bad Starter. Item Location: Altoona, IA 50009 Equipment Sold "AS IS, WHERE IS": All equipment/property is sold "AS IS, WHERE IS" with no warranty or guarantees, expressed or implied, No operational assessments have been made by DPA Auctions on this item, it has been photographed ONLY.



#236 - 1990 Ford L8000 Liquid Nurse Truck (PZ9487, Unit 17916/17917)

1990 Ford L8000 Liquid Nurse Truck (PZ9487, Unit 17916/17917), diesel engine, 6 speed transmission, air conditioning, heat, Am/Fm radio, single axle, 1600 gallon stainless steel liquid nurse tank, pump, 10.00R20 tires, show 134,656 miles. Notes: Needs batteries. Item Location: Altoona, IA 50009 Equipment Sold "AS IS, WHERE IS": All equipment/property is sold "AS IS, WHERE IS" with no warranty or guarantees, expressed or implied, No operational assessments have been made by DPA Auctions on this item, it has been photographed ONLY.



#237 - John Deere Load Command (PZ9452)

John Deere Load Command (PZ9452), John Deere load command. Notes: Item Location: Jefferson, IA 50129 Equipment Sold "AS IS, WHERE IS": All equipment/property is sold "AS IS, WHERE IS" with no warranty or guarantees, expressed or implied, No operational assessments have been made by DPA Auctions on this item, it has been photographed ONLY.



#238 - John Deere Load Command (PZ9453)

John Deere Load Command (PZ9453), John Deere load command, green iron under load command not included. Notes: Green iron under load command NOT included. Item Location: Jefferson, IA 50129 Equipment Sold "AS IS, WHERE IS": All equipment/property is sold "AS IS, WHERE IS" with no warranty or guarantees, expressed or implied, No operational assessments have been made by DPA Auctions on this item, it has been photographed ONLY.



#239 - Fuel Tank (PZ9451)

Fuel Tank (PZ9451), 500 gallon fuel tank, fuel gauge, Tuthill series 900 meter/pump. Notes: Item Location: Jefferson, IA 50129 Equipment Sold "AS IS, WHERE IS": All equipment/property is sold "AS IS, WHERE IS" with no warranty or guarantees, expressed or implied, No operational assessments have been made by DPA Auctions on this item, it has been photographed ONLY.



#240 - Flotation Tires (PZ9454)

Flotation Tires (PZ9454), 3 - 620/70R46 flotation tires & rims (1-Good Year, 2-Titan). Notes: Item Location: Jefferson, IA 50129 Equipment Sold "AS IS, WHERE IS": All equipment/property is sold "AS IS, WHERE IS" with no warranty or guarantees, expressed or implied, No operational assessments have been made by DPA Auctions on this item, it has been photographed ONLY.



#241 - Rims (PZ9455)

Rims (PZ9455), 2 - rims. Notes: Item Location: Jefferson, IA 50129 Equipment Sold "AS IS, WHERE IS": All equipment/property is sold "AS IS, WHERE IS" with no warranty or guarantees, expressed or implied, No operational assessments have been made by DPA Auctions on this item, it has been photographed ONLY.



#242 - 1980 Transcraft Flatbed Trailer (PZ9449, Unit AT12)

1980 Transcraft Flatbed Trailer (PZ9449, Unit AT12), 1980 Transcraft model TL-42 flatbed trailer, headache rack, tandem axle, spring suspension, 11R24.5 tires. Notes: Item Location: Jefferson, IA 50129 Equipment Sold "AS IS, WHERE IS": All equipment/property is sold "AS IS, WHERE IS" with no warranty or guarantees, expressed or implied, No operational assessments have been made by DPA Auctions on this item, it has been photographed ONLY.



#243 - 1986 Trailmobile Flatbed Trailer (PZ9450, Unit AT10)

1986 Trailmobile Flatbed Trailer (PZ9450, Unit AT10), 1986 Trailmobile model F71T-5EAI flatbed trailer, John Deere load command, tandem axle, spring suspension, 11R22.5 tires. Notes: Item Location: Jefferson, IA 50129 Equipment Sold "AS IS, WHERE IS": All equipment/property is sold "AS IS, WHERE IS" with no warranty or guarantees, expressed or implied, No operational assessments have been made by DPA Auctions on this item, it has been photographed ONLY.



#244 - 2007 B-B Dry Tender Trailer (PZ9457, Unit 18181)

2007 B-B Dry Tender Trailer (PZ9457, Unit 18181), 2007 B-B dry tender trailer, Willmar 24 ton dry tender box (S/N AGCW24SSVNS001012), side discharge auger, roll over tarp, tandem axle, cheater axle, 11R24.5 tires, 235/75R17.5 cheater tires. Notes: Item Location: Yale, IA 50277 Equipment Sold "AS IS, WHERE IS": All equipment/property is sold "AS IS, WHERE IS" with no warranty or guarantees, expressed or implied, No operational assessments have been made by DPA Auctions on this item, it has been photographed ONLY.



#245 - 2006 B-B Dry Tender Trailer (PZ9458, Unit 10543)

2006 B-B Dry Tender Trailer (PZ9458, Unit 10543), 2006 B-B dry tender trailer, Willmar 24 ton dry tender box (S/N 24SSJPSS135), side discharge auger, roll over tarp, tandem axle, cheater axle, 255/70R22.5 tires, 235/75R17.5 cheater tires. Notes: Item Location: Yale, IA 50277 Equipment Sold "AS IS, WHERE IS": All equipment/property is sold "AS IS, WHERE IS" with no warranty or guarantees, expressed or implied, No operational assessments have been made by DPA Auctions on this item, it has been photographed ONLY.



#246 - 2006 B-B Dry Tender Trailer (PZ9459, Unit 10548)

2006 B-B Dry Tender Trailer (PZ9459, Unit 10548), 2006 B-B dry tender trailer, Willmar 24 ton dry tender box (S/N 24SSJPSS135), side discharge auger, roll over tarp, tandem axle, cheater axle, 255/70R22.5 tires, 235/75R17.5 cheater tires. Notes: Item Location: Yale, IA 50277 Equipment Sold "AS IS, WHERE IS": All equipment/property is sold "AS IS, WHERE IS" with no warranty or guarantees, expressed or implied, No operational assessments have been made by DPA Auctions on this item, it has been photographed ONLY.



#247 - 1974 Fruehauf Liquid Transport Trailer (PZ9460, Unit 19945)

1974 Fruehauf Liquid Transport Trailer (PZ9460, Unit 19945), 1974 Fruehauf 7000 gallon 4 compartment (2800-1200-1500-1500) aluminum liquid transport trailer, fenders, tandem axle, spring suspension, 285/75R24.5 tires. Notes: Item Location: Yale, IA 50277 Equipment Sold "AS IS, WHERE IS": All equipment/property is sold "AS IS, WHERE IS" with no warranty or guarantees, expressed or implied, No operational assessments have been made by DPA Auctions on this item, it has been photographed ONLY.



#248 - 1979 Polar Liquid Transport Trailer (PZ9461, Unit W31)

1979 Polar Liquid Transport Trailer (PZ9461, Unit W31), 1979 Polar 6700 gallon stainless steel liquid transport trailer, fenders, tandem axle, air ride suspension, 285/75R24.5 tires, 4326. Notes: Item Location: Yale, IA 50277 Equipment Sold "AS IS, WHERE IS": All equipment/property is sold "AS IS, WHERE IS" with no warranty or guarantees, expressed or implied, No operational assessments have been made by DPA Auctions on this item, it has been photographed ONLY.



#249 - John Deere Planter (PZ9491, Unit 15001)

John Deere Planter (PZ9491, Unit 15001), John Deere 7000 planter, 8 row, markers, 7.60-15 tires. Notes: Item Location: Earlham, IA 50072 Equipment Sold "AS IS, WHERE IS": All equipment/property is sold "AS IS, WHERE IS" with no warranty or guarantees, expressed or implied, No operational assessments have been made by DPA Auctions on this item, it has been photographed ONLY.



#250 - 2003 Freightliner FL112 Truck (PZ9489, Unit W70)

2003 Freightliner FL112 Truck (PZ9489, Unit W70), Cat C-12 diesel engine, 10 speed transmission, air conditioning, heat, Am/Fm radio, cruise control, tandem axle, full screw, cheater axle, air ride suspension, 385/65R22.5 front tires, 11R22.5 rear tires, 295/75R22.5 cheater tires, shows 491,377 miles, 22,571 hours. Notes: Item Location: Earlham, IA 50072 Equipment Sold "AS IS, WHERE IS": All equipment/property is sold "AS IS, WHERE IS" with no warranty or guarantees, expressed or implied, No operational assessments have been made by DPA Auctions on this item, it has been photographed ONLY.



#251 - Firestone Flotation Tires (PZ9484)

Firestone Flotation Tires (PZ9484), 4 - New Firestone 710/70R38 flotation tires & rims. Notes: New tires never been mounted. Item Location: Iowa Falls, IA 50126 Equipment Sold "AS IS, WHERE IS": All equipment/property is sold "AS IS, WHERE IS" with no warranty or guarantees, expressed or implied, No operational assessments have been made by DPA Auctions on this item, it has been photographed ONLY.



#252 - 2003 Reconstructed Liquid Trailer (PZ9419, Unit 17458)

2003 Reconstructed Liquid Trailer (PZ9419, Unit 17458), 2003 Reconstructed trailer, tandem axle, air ride suspension, 1700 gallon poly liquid tank, 1600 gallon poly liquid tank, 295/75R22.5 tires. Notes: Item Location: Early, IA 50535 Equipment Sold "AS IS, WHERE IS": All equipment/property is sold "AS IS, WHERE IS" with no warranty or guarantees, expressed or implied, No operational assessments have been made by DPA Auctions on this item, it has been photographed ONLY.



#253 - 1990 Jet-Co Grain Trailer (PZ9416, Unit 18175)

1990 Jet-Co Grain Trailer (PZ9416, Unit 18175), 1990 Jet-Co approx. 26' grain trailer, tandem axle, spring suspension, roll over tarp, 10.00-20 tires. Notes: Item Location: Early, IA 50535 Equipment Sold "AS IS, WHERE IS": All equipment/property is sold "AS IS, WHERE IS" with no warranty or guarantees, expressed or implied, No operational assessments have been made by DPA Auctions on this item, it has been photographed ONLY.



#254 - 1985 IHC S2300 Truck (PZ9417, Unit 18172)

1985 IHC S2300 Truck (PZ9417, Unit 18172), Cummins diesel engine, 9 speed transmission, air conditioning, heat, Am/Fm cassette radio, single axle, 5th wheel, 11R24.5 tires, shows 497,668 miles. Notes: Item Location: Early, IA 50535 Equipment Sold "AS IS, WHERE IS": All equipment/property is sold "AS IS, WHERE IS" with no warranty or guarantees, expressed or implied, No operational assessments have been made by DPA Auctions on this item, it has been photographed ONLY.



#255 - 1993 Kenworth Liquid Nurse Truck (PZ9418, Unit 13616/14133)

1993 Kenworth Liquid Nurse Truck (PZ9418, Unit 13616/14133), Detroit diesel engine, 10 speed transmission, air conditioning, heat, Am/Fm cassette radio, cruise control, engine brake, tandem axle, full screw, cheater axle, air ride suspension, 2800 gallon stainless steel liquid nurse tank, Honda GX340 electric start gas engine, pump, 8' chemical cage, 315/80R22.5 front tires, 275/80R22.5 rear tires, 295/75R22.5 cheater tires, shows 598,740 miles. Notes: Item Location: Early, IA 50535 Equipment Sold "AS IS, WHERE IS": All equipment/property is sold "AS IS, WHERE IS" with no warranty or guarantees, expressed or implied, No operational assessments have been made by DPA Auctions on this item, it has been photographed ONLY.



#256 - 1996 Freightliner Truck (PZ9470, Unit TC10)

1996 Freightliner Truck (PZ9470, Unit TC10), Detroit Series 60 diesel engine, 9 speed transmission, air conditioning, heat, Am/Fm CD stereo, cruise control, engine brake, tandem axle, full screw, cheater axle, 315/80R22.5 front tires, 295/75R22.5 rear tires, 255/70R22.5 cheater tires. Notes: Item Location: Templeton, IA 51463 Equipment Sold "AS IS, WHERE IS": All equipment/property is sold "AS IS, WHERE IS" with no warranty or guarantees, expressed or implied, No operational assessments have been made by DPA Auctions on this item, it has been photographed ONLY.



#257 - 1998 Freightliner Truck (PZ9471, Unit TC7)

1998 Freightliner Truck (PZ9471, Unit TC7), Cummins N14 diesel engine, 10 speed transmission, air conditioning, heat, Am/Fm cassette radio, cruise control, engine brake, tandem axle, full screw, cheater axle, fenders, 315/80R22.5 front tires, 285/75R24.5 rear tires, 255/70R22.5 cheater tires. Notes: Crack in rear glass. Item Location: Templeton, IA 51463 Equipment Sold "AS IS, WHERE IS": All equipment/property is sold "AS IS, WHERE IS" with no warranty or guarantees, expressed or implied, No operational assessments have been made by DPA Auctions on this item, it has been photographed ONLY.



#258 - 1995 Freightliner Dry Tender Truck (PZ9469, Unit TC6)

1995 Freightliner Dry Tender Truck (PZ9469, Unit TC6), Detroit Series 60 diesel engine, 9 speed transmission, air conditioning, heat, Am/Fm CD stereo, cruise control, tandem axle, full screw, cheater axle, air ride suspension, Ray Man model 18CHIIFB dry tender box (S/N 07041462), top side discharge auger, all hydraulic, roll over tarp, 315/80R22.5 front tires, 295/75R22.5 rear tires, 255/70R22.5 cheater tires. Notes: Item Location: Scranton, IA 51462 Equipment Sold "AS IS, WHERE IS": All equipment/property is sold "AS IS, WHERE IS" with no warranty or guarantees, expressed or implied, No operational assessments have been made by DPA Auctions on this item, it has been photographed ONLY.



#259 - 1991 GMC TopKick Liquid Feed Truck (PZ9472, Unit W68)

1991 GMC TopKick Liquid Feed Truck (PZ9472, Unit W68), Cat 3116 diesel engine, 5 speed transmission, 2 speed rear end, heat, radio, single axle, 2 - stainless steel liquid feed tanks, 10.00R20 front tires, 11R22.5 rear tires, shows 262,171 miles. Notes: Item Location: Irwin, IA 51446 Equipment Sold "AS IS, WHERE IS": All equipment/property is sold "AS IS, WHERE IS" with no warranty or guarantees, expressed or implied, No operational assessments have been made by DPA Auctions on this item, it has been photographed ONLY.



#260 - 1991 Acro Liquid Transport Trailer (PZ9202)

1991 Acro Liquid Transport Trailer (PZ9202), 1991 Acro 3800 gallon stainless steel liquid transport trailer, MC-312-SS, ladder, tandem axle, air ride suspension, Honda 5.5 gas engine, pump, fenders, stainless steel hose tray, storage compartment, 11R22.5 tires. Notes: 2 flat tires will be replaced. Item Location: Callender, IA 50523 Equipment Sold "AS IS, WHERE IS": All equipment/property is sold "AS IS, WHERE IS" with no warranty or guarantees, expressed or implied, No operational assessments have been made by DPA Auctions on this item, it has been photographed ONLY.



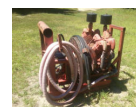
#261 - 2002 RoGator 1254 Sprayer (TR5022)

2002 RoGator 1254 Sprayer (TR5022), diesel engine, hydrostat transmission, Row Crop tires 380/90R46 tires 50%, Cummins diesel. New dashboard at 3200 hours, approx 5500 total hours, Raven monitor, 1200 gal stainless tank, 80' booms, (1) new wheel motor, 20" nozzle spacing, Auto steer/Autoswath, Machine has been serviced and is field ready. Notes: (2) Wheel motors have been changed. Item Location: Wymore, NE 68466 Equipment Sold "AS IS, WHERE IS": All equipment/property is sold "AS IS, WHERE IS" with no warranty or guarantees, expressed or implied, No operational assessments have been made by DPA Auctions on this item, it has been photographed ONLY.



#262 - 185 CFM Air Compressor (KD111)

185 CFM Air Compressor (KD111), Champion 185 CFM Air Compressor, runs as is, also set up to be hydraulically powered. Notes: Item Location: Sparta, WI 54656 Equipment Sold "AS IS, WHERE IS": All equipment/property is sold "AS IS, WHERE IS" with no warranty or guarantees, expressed or implied, No operational assessments have been made by DPA Auctions on this item, it has been photographed ONLY.



#263 - 3 Point Sprayer (AL400)

3 Point Sprayer (AL400), 200 gallon sprayer with a 20' boom, plastic tank is damaged, will need to be replaced. Notes: Item Location: Maurice, IA 51036 Equipment Sold "AS IS, WHERE IS": All equipment/property is sold "AS IS, WHERE IS" with no warranty or guarantees, expressed or implied, No operational assessments have been made by DPA Auctions on this item, it has been photographed ONLY.



#264 - Kawasaki 4 Wheeler (AL406)

Kawasaki 4 Wheeler (AL406), clean Kawasaki Bayou 350 4x4, has tear in seat, good tires and lights, always parked inside, good fenders, shows 3700 miles, runs well. Notes: NO TITLE. Item Location: Maurice, IA 51036 Equipment Sold "AS IS, WHERE IS": All equipment/property is sold "AS IS, WHERE IS" with no warranty or guarantees, expressed or implied, No operational assessments have been made by DPA Auctions on this item, it has been photographed ONLY.



#265 - John Deere Combine Snoots (AL398)

John Deere Combine Snoots (AL398), 2 sets, a left and right tow snoots in good condition. Notes: Item Location: Maurice, IA 51036 Equipment Sold "AS IS, WHERE IS": All equipment/property is sold "AS IS, WHERE IS" with no warranty or guarantees, expressed or implied, No operational assessments have been made by DPA Auctions on this item, it has been photographed ONLY.



#266 - Hay Rack Wagon (AL402)

Hay Rack Wagon (AL402), newer decking on trailer, older running gear, tires are poor, works good. Notes: Item Location: Maurice, IA 51036 Equipment Sold "AS IS, WHERE IS": All equipment/property is sold "AS IS, WHERE IS" with no warranty or guarantees, expressed or implied, No operational assessments have been made by DPA Auctions on this item, it has been photographed ONLY.



#267 - 4 wheeler/ Motorcycle Lift (AL408)

4 wheeler/ Motorcycle Lift (AL408), like new lift, only used 3 times, 1,500 lb. lift limit. Notes: Item Location: Maurice, IA 51036 Equipment Sold "AS IS, WHERE IS": All equipment/property is sold "AS IS, WHERE IS" with no warranty or guarantees, expressed or implied, No operational assessments have been made by DPA Auctions on this item, it has been photographed ONLY.



#268 - Semi Fuel Tank (AL403)

Semi Fuel Tank (AL403), 55 gallon tank off Peterbilt, all aluminum construction, has steps and mounting hardware, super clean tank. Notes: Item Location: Maurice, IA 51036 Equipment Sold "AS IS, WHERE IS": All equipment/property is sold "AS IS, WHERE IS" with no warranty or guarantees, expressed or implied, No operational assessments have been made by DPA Auctions on this item, it has been photographed ONLY.



#269 - Harley Davidson Saddle Bags (AL404)

Harley Davidson Saddle Bags (AL404), like new, mint condition bags, bags come with mounting hardware, came off of '05 Harley motorcycle. Notes: Item Location: Maurice, IA 51036 Equipment Sold "AS IS, WHERE IS": All equipment/property is sold "AS IS, WHERE IS" with no warranty or guarantees, expressed or implied, No operational assessments have been made by DPA Auctions on this item, it has been photographed ONLY.



#270 - Harley Davidson Wheel (AL405)

Harley Davidson Wheel (AL405), clean front wheel for Harley motorcycle. Notes: Item Location: Maurice, IA 51036 Equipment Sold "AS IS, WHERE IS": All equipment/property is sold "AS IS, WHERE IS" with no warranty or guarantees, expressed or implied, No operational assessments have been made by DPA Auctions on this item, it has been photographed ONLY.



#271 - 8' Disc Mower (AL399)

8' Disc Mower (AL399), gearbox is bad and was removed, parts only unit, 8' bar and disc's are good, needs gearbox. Notes: Item Location: Maurice, IA 51036 Equipment Sold "AS IS, WHERE IS": All equipment/property is sold "AS IS, WHERE IS" with no warranty or guarantees, expressed or implied, No operational assessments have been made by DPA Auctions on this item, it has been photographed ONLY.



#272 - Cat 75 Challenger Tractor (AL396)

Cat 75 Challenger Tractor (AL396), 350 hp, 10 speed powershift transmission, pto, 4 sets of hydraulics, tracks and idlers are good, chrome stack and new LED lighting, has heat and a/c with radio and digital dash, good interior and excellent paint, shows 6,600 hours. Notes: Item Location: Maurice, IA 51036 Equipment Sold "AS IS, WHERE IS": All equipment/property is sold "AS IS, WHERE IS" with no warranty or guarantees, expressed or implied, No operational assessments have been made by DPA Auctions on this item, it has been photographed ONLY.



#273 - 1994 Merritt Grain Trailer (AL397)

1994 Merritt Grain Trailer (AL397), 48' long with triple axle, good king pin and brakes, good tires, 11R24.5, aluminum rims with spring suspension, solid hoppers with solid doors and cranks, good tarp, no holes, clean all aluminum construction. Notes: Item Location: Maurice, IA 51036 Equipment Sold "AS IS, WHERE IS": All equipment/property is sold "AS IS, WHERE IS" with no warranty or guarantees, expressed or implied, No operational assessments have been made by DPA Auctions on this item, it has been photographed ONLY.



#274 - 1992 30' Single Hopper Trailer (AL401)

1992 30' Single Hopper Trailer (AL401), all steel construction, holds 750 bushels, 285/75R24.5 Tires, good brakes, good tarp, front and back ladders, lights and bottom door work, has rust. Notes: Item Location: Maurice, IA 51036 Equipment Sold "AS IS, WHERE IS": All equipment/property is sold "AS IS, WHERE IS" with no warranty or guarantees, expressed or implied, No operational assessments have been made by DPA Auctions on this item, it has been photographed ONLY.



#275 - 1978 359 Peterbilt (AL395)

1978 359 Peterbilt (AL395), big cam Cummins, 13 speed transmission, radio, A/C, heat, body is clean with good glass, 24.5 rims and tires with air suspension, 220" wheelbase, pto and wet kit, air slide fifth wheel, air ride seat with clean interior, lots of chrome with dual exhaust, shows 300,000 miles. Notes: Item Location: Maurice, IA 51036 Equipment Sold "AS IS, WHERE IS": All equipment/property is sold "AS IS, WHERE IS" with no warranty or guarantees, expressed or implied, No operational assessments have been made by DPA Auctions on this item, it has been photographed ONLY.



#276 - 2008 Dodge Caravan (AL407)

2008 Dodge Caravan (AL407), STX Model with 3.8 engine, sto and go, am/fm. DVD and headphones, power windows and locks, newer tires, grey interior in good condition, has a few cracks in front windshield, shows 137,000 miles. Notes: Item Location: Maurice, IA 51036 Equipment Sold "AS IS, WHERE IS": All equipment/property is sold "AS IS, WHERE IS" with no warranty or guarantees, expressed or implied, No operational assessments have been made by DPA Auctions on this item, it has been photographed ONLY.



#277 - Boom With Hydarulic Controls (AL409)

Boom With Hydarulic Controls (AL409), boom with hydraulic controls, 8'-0" 6000 LBS capacity, 10'-0" 4800 LBS capacity, 14'-1" 3400 LBS capacity, 19'-2" 2000 LBS capacity. Notes: Item Location: Camanche, IA 52730 Equipment Sold "AS IS, WHERE IS": All equipment/property is sold "AS IS, WHERE IS" with no warranty or guarantees, expressed or implied, No operational assessments have been made by DPA Auctions on this item, it has been photographed ONLY.



#278 - 1999 International 4900 Loral (ED550)

1999 International 4900 Loral (ED550), 530 power diesel, rebuilt Allison automatic with speed, AC, new springs and shackles, newer air seat, truck runs and shifts great, was used as a sprayer truck, minimal rust, clean, 48X20 tires on front 50% tread, 66X43 on rear tires 20% tread, all tires are sound, shows 79,398 miles. Notes: There is no title for this unit. Item Location: Bowen, IL 62316 Equipment Sold "AS IS, WHERE IS": All equipment/property is sold "AS IS, WHERE IS" with no warranty or guarantees, expressed or implied, No operational assessments have been made by DPA Auctions on this item, it has been photographed ONLY.



#279 - Two (2) Squirrel Cage Fans (KMK425)

Two (2) Squirrel Cage Fans (KMK425), 26" wide fans, 20" inlet on both sides, outlet is 31" x 31", unit has 1 11/16" shaft and a 16", 4 groove, B section pulley. Notes: Item Location: Arthur, IL 61911 Equipment Sold "AS IS, WHERE IS": All equipment/property is sold "AS IS, WHERE IS" with no warranty or guarantees, expressed or implied, No operational assessments have been made by DPA Auctions on this item, it has been photographed ONLY.



#280 - Roach 22' Conveyor (KMK424)

Roach 22' Conveyor (KMK424), Roach Manufacturing, 24" width, 22' length, crescent top belt, no motor. Notes: Item Location: Arthur, IL 61911 Equipment Sold "AS IS, WHERE IS": All equipment/property is sold "AS IS, WHERE IS" with no warranty or guarantees, expressed or implied, No operational assessments have been made by DPA Auctions on this item, it has been photographed ONLY.



#281 - 2012 Case IH 2612 Chopping Corn Head (TH298)

2012 Case IH 2612 Chopping Corn Head (TH298), 3 sensor head sight, tall corn kit, adjustable deck plates, stainless wear plates, end spout spirals, 12 Maywes stalk stompers, 1 season on chopper blades, approximately 8000 acres. Notes: Gearbox oil changed and full maintenance check prior to each season. Has been a real good head. We have just switched to 22" rows. TrueSight Not included Item Location: Morris, MN 56267 Equipment Sold "AS IS, WHERE IS": All equipment/property is sold "AS IS, WHERE IS" with no warranty or guarantees, expressed or implied, No operational assessments have been made by DPA Auctions on this item, it has been photographed ONLY.



#282 - 1990 John Deere 9500 Combine (PZ9514)

1990 John Deere 9500 Combine (PZ9514), 1990 John Deere 9500 combine, diesel engine, hydrostatic transmission, air conditioning, heat, Am/Fm radio, cab, lights, shows 4491 engine hours, 2995 separator hours. Notes: Item Location: Prior Lake, MN 55372 Equipment Sold "AS IS, WHERE IS": All equipment/property is sold "AS IS, WHERE IS" with no warranty or guarantees, expressed or implied, No operational assessments have been made by DPA Auctions on this item, it has been photographed ONLY.



#283 - DMI 5300 Wing (PZ9496)

DMI 5300 Wing (PZ9496), New DMI 5300 NH3 wing, red in color. Notes: Item Location: Gilmore City, IA 50541 Equipment Sold "AS IS, WHERE IS": All equipment/property is sold "AS IS, WHERE IS" with no warranty or guarantees, expressed or implied, No operational assessments have been made by DPA Auctions on this item, it has been photographed ONLY.



#284 - DMI 5300 Wing (PZ9497)

DMI 5300 Wing (PZ9497), New DMI 5300 NH3 wing, blue in color. Notes: Item Location: Gilmore City, IA 50541 Equipment Sold "AS IS, WHERE IS": All equipment/property is sold "AS IS, WHERE IS" with no warranty or guarantees, expressed or implied, No operational assessments have been made by DPA Auctions on this item, it has been photographed ONLY.



#285 - DMI Coulter Bar (PZ9498)

DMI Coulter Bar (PZ9498), New DMI coulters bar for 47.5' tool bar. Notes: Item Location: Gilmore City, IA 50541 Equipment Sold "AS IS, WHERE IS": All equipment/property is sold "AS IS, WHERE IS" with no warranty or guarantees, expressed or implied, No operational assessments have been made by DPA Auctions on this item, it has been photographed ONLY.



#286 - DMI 5300 NH3 Tool Bar (PZ9508, Unit A8)

DMI 5300 NH3 Tool Bar (PZ9508, Unit A8), DMI 5300 16 knife pull type tool bar, coulters, DMI spring - Seal'r double disc sealers, Raven super cooler, Dempster ground driven pump, walking tandems, hydraulic wings, 11L-15 flotation tires, rear hitch. Notes: No monitor. Item Location: Havelock, IA 50546 Equipment Sold "AS IS, WHERE IS": All equipment/property is sold "AS IS, WHERE IS" with no warranty or guarantees, expressed or implied, No operational assessments have been made by DPA Auctions on this item, it has been photographed ONLY.



#287 - DMI 5300 NH3 Tool Bar (PZ9500, Unit 150)

DMI 5300 NH3 Tool Bar (PZ9500, Unit 150), DMI 5300 21 knife pull type tool bar, coulters, Dalton double disc sealers, Double Raven Super cooler, walking tandems, walking tandems on wings, hydraulic wings, 100 gallon poly tank, pump, 12.5L-15 flotation tires, rear hitch. Notes: Item Location: Gilmore City, IA 50541 Equipment Sold "AS IS, WHERE IS": All equipment/property is sold "AS IS, WHERE IS" with no warranty or guarantees, expressed or implied, No operational assessments have been made by DPA Auctions on this item, it has been photographed ONLY.



#288 - DMI 5300 NH3 Tool Bar (PZ9502, Unit 149)

DMI 5300 NH3 Tool Bar (PZ9502, Unit 149), DMI 5300 21 knife pull type tool bar, coulters, Dalton double disc sealers, Double Raven Super cooler, walking tandems, walking tandems on wings, hydraulic wings, 100 gallon poly tank, 12.5L-15 flotation tires, rear hitch. Notes: Item Location: Gilmore City, IA 50541 Equipment Sold "AS IS, WHERE IS": All equipment/property is sold "AS IS, WHERE IS" with no warranty or guarantees, expressed or implied, No operational assessments have been made by DPA Auctions on this item, it has been photographed ONLY.

**#289 - DMI 5300 NH3 Tool Bar (PZ9503, Unit 147)**

DMI 5300 NH3 Tool Bar (PZ9503, Unit 147), DMI 5300 19 knife pull type tool bar, coulters, DMI uni-seal'r single disc sealer, Double Raven Super cooler, walking tandems, walking tandems on wings, hydraulic wings, 100 gallon poly tank, 11L-15 flotation tires, rear hitch. Notes: Item Location: Gilmore City, IA 50541 Equipment Sold "AS IS, WHERE IS": All equipment/property is sold "AS IS, WHERE IS" with no warranty or guarantees, expressed or implied, No operational assessments have been made by DPA Auctions on this item, it has been photographed ONLY.

**#290 - DMI 5300 NH3 Tool Bar (PZ9504, Unit 144)**

DMI 5300 NH3 Tool Bar (PZ9504, Unit 144), DMI 5300 16 knife pull type tool bar, coulters, DMI uni-seal'r single disc sealer, Raven Super cooler, walking tandems, hydraulic wings, 100 gallon poly tank, 11L-15 flotation tires, rear hitch. Notes: Item Location: Gilmore City, IA 50541 Equipment Sold "AS IS, WHERE IS": All equipment/property is sold "AS IS, WHERE IS" with no warranty or guarantees, expressed or implied, No operational assessments have been made by DPA Auctions on this item, it has been photographed ONLY.

**#291 - DMI 5300 NH3 Tool Bar (PZ9505, Unit A12)**

DMI 5300 NH3 Tool Bar (PZ9505, Unit A12), DMI 5300 16 knife pull type tool bar, coulters, some double disc sealers, Raven Super cooler, Dempster ground driven pump, walking tandems, hydraulic wings, 11L-15 flotation tires, rear hitch. Notes: Item Location: Gilmore City, IA 50541 Equipment Sold "AS IS, WHERE IS": All equipment/property is sold "AS IS, WHERE IS" with no warranty or guarantees, expressed or implied, No operational assessments have been made by DPA Auctions on this item, it has been photographed ONLY.

**#292 - DMI 5250 NH3 Tool Bar (PZ9501, Unit 324)**

DMI 5250 NH3 Tool Bar (PZ9501, Unit 324), DMI 5250 17 knife pull type tool bar, coulters, DMI uni-seal'r single disc sealer, Raven Super cooler, walking tandems, walking tandems on wings, hydraulic wings, 100 gallon poly tank, 11L-15 flotation tires, rear hitch. Notes: Item Location: Gilmore City, IA 50541 Equipment Sold "AS IS, WHERE IS": All equipment/property is sold "AS IS, WHERE IS" with no warranty or guarantees, expressed or implied, No operational assessments have been made by DPA Auctions on this item, it has been photographed ONLY.

**#293 - DMI 5300 NH3 Tool Bar (PZ9506, Unit 148)**

DMI 5300 NH3 Tool Bar (PZ9506, Unit 148), DMI 5300 21 knife pull type tool bar, coulters, Dalton double disc sealers, Double Raven Super cooler, walking tandems, walking tandems on wings, hydraulic wings, 100 gallon poly tank, 12.5L-15 flotation tires, rear hitch. Notes: Item Location: Gilmore City, IA 50541 Equipment Sold "AS IS, WHERE IS": All equipment/property is sold "AS IS, WHERE IS" with no warranty or guarantees, expressed or implied, No operational assessments have been made by DPA Auctions on this item, it has been photographed ONLY.

**#294 - NH3 Nurse Tank (PZ9511, Unit W39)**

NH3 Nurse Tank (PZ9511, Unit W39), 1000 gallon NH3 nurse tank, top front fill, 5th wheel gear, poly water tank, 11L-15 flotation tires, data plate. Notes: Failed Inspection. Item Location: Gilmore City, IA 50541 Equipment Sold "AS IS, WHERE IS": All equipment/property is sold "AS IS, WHERE IS" with no warranty or guarantees, expressed or implied, No operational assessments have been made by DPA Auctions on this item, it has been photographed ONLY.

**#295 - NH3 Nurse Tank (PZ9510, Unit 209)**

NH3 Nurse Tank (PZ9510, Unit 209), 1000 gallon NH3 nurse tank, top front fill, 5th wheel gear, 11L-15 flotation tires, data plate. Notes: Failed Inspection. Item Location: Gilmore City, IA 50541 Equipment Sold "AS IS, WHERE IS": All equipment/property is sold "AS IS, WHERE IS" with no warranty or guarantees, expressed or implied, No operational assessments have been made by DPA Auctions on this item, it has been photographed ONLY.

**#296 - NH3 Nurse Tank (PZ9512, Unit W11)**

NH3 Nurse Tank (PZ9512, Unit W11), 1000 gallon NH3 nurse tank, top front fill, 5th wheel gear, 11L-15 flotation tires, data plate. Notes: Failed Inspection. Item Location: Gilmore City, IA 50541 Equipment Sold "AS IS, WHERE IS": All equipment/property is sold "AS IS, WHERE IS" with no warranty or guarantees, expressed or implied, No operational assessments have been made by DPA Auctions on this item, it has been photographed ONLY.



#297 - Cherokee Steel Storage Tank (PZ9499)

Cherokee Steel Storage Tank (PZ9499), Cherokee Steel 12,000 gallon NH3 storage tank, Magnetel tank volume gauge, concrete saddles, data plate. (Tank and Valve only). Notes: This storage tank must be removed by October 31st, 2018 with NO exceptions. Dismantle, removal and transportation is at the expense, risk and liability of the buyer. Item Location: Gilmore City, IA 50541 Equipment Sold "AS IS, WHERE IS": All equipment/property is sold "AS IS, WHERE IS" with no warranty or guarantees, expressed or implied, No operational assessments have been made by DPA Auctions on this item, it has been photographed ONLY.



#298 - John Deere Sickle Mower (PZ9509)

John Deere Sickle Mower (PZ9509), John Deere sickle mower. Notes: Item Location: Gilmore City, IA 50541 Equipment Sold "AS IS, WHERE IS": All equipment/property is sold "AS IS, WHERE IS" with no warranty or guarantees, expressed or implied, No operational assessments have been made by DPA Auctions on this item, it has been photographed ONLY.



#299 - USC Seed Treater (PZ9507)

USC Seed Treater (PZ9507), USC ApronMaxx seed treater, seed wheel, control panel, easy load II, stainless steel tank, (poly tank and 1 easy load will be removed). Notes: Poly tank and 1 easy load will be removed. Please contact seller for more information. Item Location: Rolfe, IA 50581 Equipment Sold "AS IS, WHERE IS": All equipment/property is sold "AS IS, WHERE IS" with no warranty or guarantees, expressed or implied, No operational assessments have been made by DPA Auctions on this item, it has been photographed ONLY.



#300 - GSI Grain Bin Fan (NP6773)

GSI Grain Bin Fan (NP6773), Model DF-158-3, 3 phase, Baldor 10-15HP electric motor, 120V 1 phase control circuit. Item will only be able to be picked up between the dates of August 6 through August 27, please plan accordingly. Notes: Item Location: Mound City, MO 64470 Equipment Sold "AS IS, WHERE IS": All equipment/property is sold "AS IS, WHERE IS" with no warranty or guarantees, expressed or implied, No operational assessments have been made by DPA Auctions on this item, it has been photographed ONLY.



#301 - Maurer Mfg. Grain Tank Extension (NP6774)

Maurer Mfg. Grain Tank Extension (NP6774), Part no. 13-3928, came off John Deere S670 combine. Item will only be able to be picked up between the dates of August 6 through August 27, please plan accordingly. Notes: Item Location: Mound City, MO 64470 Equipment Sold "AS IS, WHERE IS": All equipment/property is sold "AS IS, WHERE IS" with no warranty or guarantees, expressed or implied, No operational assessments have been made by DPA Auctions on this item, it has been photographed ONLY.



#302 - Crary Big Top Combine Hopper Extensions (NP6776)

Crary Big Top Combine Hopper Extensions (NP6776), came off John Deere S670 combine. Item will only be able to be picked up between the dates of August 6 through August 27, please plan accordingly. Notes: Item Location: Mound City, MO 64470 Equipment Sold "AS IS, WHERE IS": All equipment/property is sold "AS IS, WHERE IS" with no warranty or guarantees, expressed or implied, No operational assessments have been made by DPA Auctions on this item, it has been photographed ONLY.



#303 - Feterl Farm King Grain Auger (NP6801)

Feterl Farm King Grain Auger (NP6801), Model 1282, 12" x 82', swing hopper, hydraulic, PTO, ST235/80R16 tires. Item will only be able to be picked up between the dates of August 6 through August 27, please plan accordingly. Notes: Has 2 worn spots in the tube as shown in pictures. Item Location: Mound City, MO 64470 Equipment Sold "AS IS, WHERE IS": All equipment/property is sold "AS IS, WHERE IS" with no warranty or guarantees, expressed or implied, No operational assessments have been made by DPA Auctions on this item, it has been photographed ONLY.



#304 - Kelderman Corn Reel (NP6788)

Kelderman Corn Reel (NP6788), 8 row 30". Item will only be able to be picked up between the dates of August 6 through August 27, please plan accordingly. Notes: Item Location: Mound City, MO 64470 Equipment Sold "AS IS, WHERE IS": All equipment/property is sold "AS IS, WHERE IS" with no warranty or guarantees, expressed or implied, No operational assessments have been made by DPA Auctions on this item, it has been photographed ONLY.



#305 - Assorted Hoses (NP6779)

Assorted Hoses (NP6779), various lengths and sizes. Item will only be able to be picked up between the dates of August 6 through August 27, please plan accordingly. Notes: Never been used. Item Location: Mound City, MO 64470 Equipment Sold "AS IS, WHERE IS": All equipment/property is sold "AS IS, WHERE IS" with no warranty or guarantees, expressed or implied, No operational assessments have been made by DPA Auctions on this item, it has been photographed ONLY.



#306 - ATV Sprayer (NP6781)

ATV Sprayer (NP6781), poly tank, spray wand. Item will only be able to be picked up between the dates of August 6 through August 27, please plan accordingly. Notes: Item Location: Mound City, MO 64470 Equipment Sold "AS IS, WHERE IS": All equipment/property is sold "AS IS, WHERE IS" with no warranty or guarantees, expressed or implied, No operational assessments have been made by DPA Auctions on this item, it has been photographed ONLY.



#307 - Poly Shuttle Tank (NP6784)

Poly Shuttle Tank (NP6784), 220 gallon capacity. Item will only be able to be picked up between the dates of August 6 through August 27, please plan accordingly. Notes: Item Location: Mound City, MO 64470 Equipment Sold "AS IS, WHERE IS": All equipment/property is sold "AS IS, WHERE IS" with no warranty or guarantees, expressed or implied, No operational assessments have been made by DPA Auctions on this item, it has been photographed ONLY.



#308 - LP Tank (NP6794)

LP Tank (NP6794), 1,000 gallon capacity, data plate. Item will only be able to be picked up between the dates of August 6 through August 27, please plan accordingly. Notes: TANK ONLY, running gear DOES NOT SELL with this lot. Item Location: Mound City, MO 64470 Equipment Sold "AS IS, WHERE IS": All equipment/property is sold "AS IS, WHERE IS" with no warranty or guarantees, expressed or implied, No operational assessments have been made by DPA Auctions on this item, it has been photographed ONLY.



#309 - Frontier Rotary Mower (NP6785)

Frontier Rotary Mower (NP6785), Model GM1072R, 3 point, 540 PTO. Item will only be able to be picked up between the dates of August 6 through August 27, please plan accordingly. Notes: Item Location: Mound City, MO 64470 Equipment Sold "AS IS, WHERE IS": All equipment/property is sold "AS IS, WHERE IS" with no warranty or guarantees, expressed or implied, No operational assessments have been made by DPA Auctions on this item, it has been photographed ONLY.



#310 - Casappa Single Hydraulic Pump (NP6790)

Casappa Single Hydraulic Pump (NP6790), KP40.73D0-06S8-P0G/0F-N-CSC, came off Terra Gator 7300 floater. Item will only be able to be picked up between the dates of August 6 through August 27, please plan accordingly. Notes: Item Location: Mound City, MO 64470 Equipment Sold "AS IS, WHERE IS": All equipment/property is sold "AS IS, WHERE IS" with no warranty or guarantees, expressed or implied, No operational assessments have been made by DPA Auctions on this item, it has been photographed ONLY.



#311 - DUO Lift Running Gear (NP6795)

DUO Lift Running Gear (NP6795), 5th wheel, adjustable axles, 11L-15 flotation tires. Item will only be able to be picked up between the dates of August 6 through August 27, please plan accordingly. Notes: Item Location: Mound City, MO 64470 Equipment Sold "AS IS, WHERE IS": All equipment/property is sold "AS IS, WHERE IS" with no warranty or guarantees, expressed or implied, No operational assessments have been made by DPA Auctions on this item, it has been photographed ONLY.



#312 - DUO Lift Running Gear (NP6800)

DUO Lift Running Gear (NP6800), 5th wheel, adjustable axles, 11L-15 flotation tires. Item will only be able to be picked up between the dates of August 6 through August 27, please plan accordingly. Notes: 1 missing tire. Item Location: Mound City, MO 64470 Equipment Sold "AS IS, WHERE IS": All equipment/property is sold "AS IS, WHERE IS" with no warranty or guarantees, expressed or implied, No operational assessments have been made by DPA Auctions on this item, it has been photographed ONLY.



#313 - (4) Pirelli Tires/Rims (NP6770)

(4) Pirelli Tires/Rims (NP6770), Model PZERO NERO, size P235/55ZR17, Chevrolet 5 bolt rims. Item will only be able to be picked up between the dates of August 6 through August 27, please plan accordingly. Notes: Came off Chevrolet Monte Carlo. Item Location: Mound City, MO 64470 Equipment Sold "AS IS, WHERE IS": All equipment/property is sold "AS IS, WHERE IS" with no warranty or guarantees, expressed or implied, No operational assessments have been made by DPA Auctions on this item, it has been photographed ONLY.



#314 - (4) Michelin Tires/Rims (NP6771)

(4) Michelin Tires/Rims (NP6771), size LT245/70R17, 8 bolt rims. Item will only be able to be picked up between the dates of August 6 through August 27, please plan accordingly. Notes: Came off Dodge Ram 2500. Item Location: Mound City, MO 64470 Equipment Sold "AS IS, WHERE IS": All equipment/property is sold "AS IS, WHERE IS" with no warranty or guarantees, expressed or implied, No operational assessments have been made by DPA Auctions on this item, it has been photographed ONLY.



#315 - (2) Tires/Rims (NP6772)

(2) Tires/Rims (NP6772), size P205/70R15. Item will only be able to be picked up between the dates of August 6 through August 27, please plan accordingly. Notes: Item Location: Mound City, MO 64470 Equipment Sold "AS IS, WHERE IS": All equipment/property is sold "AS IS, WHERE IS" with no warranty or guarantees, expressed or implied, No operational assessments have been made by DPA Auctions on this item, it has been photographed ONLY.



#316 - (2) Titan Flotation Tires/Rims (NP6783)

(2) Titan Flotation Tires/Rims (NP6783), size 16.5L-16.1, 8 bolt rim pattern. Item will only be able to be picked up between the dates of August 6 through August 27, please plan accordingly. Notes: Item Location: Mound City, MO 64470 Equipment Sold "AS IS, WHERE IS": All equipment/property is sold "AS IS, WHERE IS" with no warranty or guarantees, expressed or implied, No operational assessments have been made by DPA Auctions on this item, it has been photographed ONLY.



#317 - 1990 Ford F600 Scissor Truck (NP6791)

1990 Ford F600 Scissor Truck (NP6791), 370-2V Lima Engine gas engine, 5 speed manual transmission, heat, single axle, spring suspension, 92" x 11' rear scissor platform, 11' lift height, truck mounted and hand lift controls, 9-22.5 tires, shows 3,617 miles. Item will only be able to be picked up between the dates of August 6 through August 27, please plan accordingly. Notes: This truck needs a carburetor hit and the seller has one for it and it will be provided to the winning bidder. Came from Military Base used to load cargo on planes. Was represented to seller when purchased as actual miles. Item Location: Mound City, MO 64470 Equipment Sold "AS IS, WHERE IS": All equipment/property is sold "AS IS, WHERE IS" with no warranty or guarantees, expressed or implied, No operational assessments have been made by DPA Auctions on this item, it has been photographed ONLY.



#319 - NEW Unverferth Grain Wagon Hub (NP6767)

NEW Unverferth Grain Wagon Hub (NP6767), w/ BRG CUPS, (10) 7/8 x 3 1/2 WHL STUDS. Item will only be able to be picked up between the dates of August 6 through August 27, please plan accordingly. Notes: Item Location: Mound City, MO 64470 Equipment Sold "AS IS, WHERE IS": All equipment/property is sold "AS IS, WHERE IS" with no warranty or guarantees, expressed or implied, No operational assessments have been made by DPA Auctions on this item, it has been photographed ONLY.



#320 - (3) Oil Containers (NP6768)

(3) Oil Containers (NP6768), approx. 55 gallon capacity each, containers are empty. Item will only be able to be picked up between the dates of August 6 through August 27, please plan accordingly. Notes: Item Location: Mound City, MO 64470 Equipment Sold "AS IS, WHERE IS": All equipment/property is sold "AS IS, WHERE IS" with no warranty or guarantees, expressed or implied, No operational assessments have been made by DPA Auctions on this item, it has been photographed ONLY.



#321 - (2) John Deere Header Shafts (NP6775)

(2) John Deere Header Shafts (NP6775), came off a JD 635FD. Item will only be able to be picked up between the dates of August 6 through August 27, please plan accordingly. Notes: Item Location: Mound City, MO 64470 Equipment Sold "AS IS, WHERE IS": All equipment/property is sold "AS IS, WHERE IS" with no warranty or guarantees, expressed or implied, No operational assessments have been made by DPA Auctions on this item, it has been photographed ONLY.



#322 - (2) Prince Hydraulics (NP6777)

(2) Prince Hydraulics (NP6777), 3000 P.S.I., Bore: 3, Stroke: 20, NEVER USED. Item will only be able to be picked up between the dates of August 6 through August 27, please plan accordingly. Notes: Item Location: Mound City, MO 64470 Equipment Sold "AS IS, WHERE IS": All equipment/property is sold "AS IS, WHERE IS" with no warranty or guarantees, expressed or implied, No operational assessments have been made by DPA Auctions on this item, it has been photographed ONLY.



#323 - (3) Alamo Group Hydraulics (NP6778)

(3) Alamo Group Hydraulics (NP6778), (1) 30TD05.5-125, (2) 40WD16-200, working pressure 3000 PSI, NEVER USED. Item will only be able to be picked up between the dates of August 6 through August 27, please plan accordingly. Notes: Item Location: Mound City, MO 64470 Equipment Sold "AS IS, WHERE IS": All equipment/property is sold "AS IS, WHERE IS" with no warranty or guarantees, expressed or implied, No operational assessments have been made by DPA Auctions on this item, it has been photographed ONLY.



#324 - Petmate Pet Porter (NP6782)

Petmate Pet Porter (NP6782).Item will only be able to be picked up between the dates of August 6 through August 27, please plan accordingly. Notes: Item Location: Mound City, MO 64470 Equipment Sold "AS IS, WHERE IS": All equipment/property is sold "AS IS, WHERE IS" with no warranty or guarantees, expressed or implied, No operational assessments have been made by DPA Auctions on this item, it has been photographed ONLY.



#325 - Agri-Fab 2 Wheel Cart (NP6786)

Agri-Fab 2 Wheel Cart (NP6786), 10 cu. ft., (2) flat tires, removable end gate.Item will only be able to be picked up between the dates of August 6 through August 27, please plan accordingly. Notes: Item Location: Mound City, MO 64470 Equipment Sold "AS IS, WHERE IS": All equipment/property is sold "AS IS, WHERE IS" with no warranty or guarantees, expressed or implied, No operational assessments have been made by DPA Auctions on this item, it has been photographed ONLY.



#326 - Electrical Pole (NP6787)

Electrical Pole (NP6787).Item will only be able to be picked up between the dates of August 6 through August 27, please plan accordingly. Notes: Item Location: Mound City, MO 64470 Equipment Sold "AS IS, WHERE IS": All equipment/property is sold "AS IS, WHERE IS" with no warranty or guarantees, expressed or implied, No operational assessments have been made by DPA Auctions on this item, it has been photographed ONLY.



#327 - (8) Gutter Elbows (NP6789)

(8) Gutter Elbows (NP6789).Item will only be able to be picked up between the dates of August 6 through August 27, please plan accordingly. Notes: Item Location: Mound City, MO 64470 Equipment Sold "AS IS, WHERE IS": All equipment/property is sold "AS IS, WHERE IS" with no warranty or guarantees, expressed or implied, No operational assessments have been made by DPA Auctions on this item, it has been photographed ONLY.



#328 - Doors & Windows (NP6792)

Doors & Windows (NP6792), (1) storm door, (2) front doors, (5) Anderson windows.Item will only be able to be picked up between the dates of August 6 through August 27, please plan accordingly. Notes: Item Location: Mound City, MO 64470 Equipment Sold "AS IS, WHERE IS": All equipment/property is sold "AS IS, WHERE IS" with no warranty or guarantees, expressed or implied, No operational assessments have been made by DPA Auctions on this item, it has been photographed ONLY.



#329 - Electric Motors (NP6780)

Electric Motors (NP6780), (1) Marathon 7.5HP 3 phase electric motor, (1) Marathon 1.5HP single phase electric motor.Item will only be able to be picked up between the dates of August 6 through August 27, please plan accordingly. Notes: Item Location: Mound City, MO 64470 Equipment Sold "AS IS, WHERE IS": All equipment/property is sold "AS IS, WHERE IS" with no warranty or guarantees, expressed or implied, No operational assessments have been made by DPA Auctions on this item, it has been photographed ONLY.



#330 - Pottinger Novacat V10 ED/351 Alpha Motion Combo (PZ9515)

Pottinger Novacat V10 ED/351 Alpha Motion Combo (PZ9515), 2013 Pottinger Novacat V10 ED (S/N VBP00021012000234), with approx. 3500 acres, 2015 Pottinger Novacat 351 alpha-motion (S/N VBP00021007006158), with approx. 400 acres total use, both have extra dry tine conditioners, hydraulics have flat face high flow couplers, includes a dedicated control console but will work through tractor IsoBus for control through the tractor virtual terminal. Notes: Excellent condition, ready for the field. Tractor and front hitch/PTO in images NOT included. Item Location: Norwalk, IA 50211 Equipment Sold "AS IS, WHERE IS": All equipment/property is sold "AS IS, WHERE IS" with no warranty or guarantees, expressed or implied, No operational assessments have been made by DPA Auctions on this item, it has been photographed ONLY.



#331 - 2014 John Deere 569P Round Baler (PZ9516)

2014 John Deere 569P Round Baler (PZ9516), 2014 John Deere 569P round baler, approx. 8800 total bales, has run hay only, fully optioned, will run twine or wrap, John Deere 2600 GS2 monitor and wire harness, it will interface on John Deere tractors for control through a virtual terminal. Notes: Item Location: Norwalk, IA 50211 Equipment Sold "AS IS, WHERE IS": All equipment/property is sold "AS IS, WHERE IS" with no warranty or guarantees, expressed or implied, No operational assessments have been made by DPA Auctions on this item, it has been photographed ONLY.



#332 - 2017 Kuhn SR600 Rake (PZ9517)

2017 Kuhn SR600 Rake (PZ9517), 2017 model SR600 rake, 14 wheels (28'), tandem rear wheels, wind guards, hydraulic kicker wheels, less than 300 acres of use. Notes: Original warranty applies from August of 2017. Item Location: Norwalk, IA 50211 Equipment Sold "AS IS, WHERE IS": All equipment/property is sold "AS IS, WHERE IS" with no warranty or guarantees, expressed or implied, No operational assessments have been made by DPA Auctions on this item, it has been photographed ONLY.



#333 - New Holland Wheel Rake (PZ9518)

New Holland Wheel Rake (PZ9518), New Holland model HT154 wheel rake, all teeth are in place, extra teeth included, travel locks. Notes: No cracks or welds, field ready. Item Location: Norwalk, IA 50211 Equipment Sold "AS IS, WHERE IS": All equipment/property is sold "AS IS, WHERE IS" with no warranty or guarantees, expressed or implied, No operational assessments have been made by DPA Auctions on this item, it has been photographed ONLY.



#334 - Curtainside Hay Trailer (PZ9519)

Curtainside Hay Trailer (PZ9519), Curtainside hay trailer, 16' curtainside truck body mounted on Demco HD wagon gear, holds 140 square bales, weather tight, curtains are in average serviceable condition. Notes: Item Location: Norwalk, IA 50211 Equipment Sold "AS IS, WHERE IS": All equipment/property is sold "AS IS, WHERE IS" with no warranty or guarantees, expressed or implied, No operational assessments have been made by DPA Auctions on this item, it has been photographed ONLY.



#335 - Curtainside Truck Body (PZ9520)

Curtainside Truck Body (PZ9520), 25' curtainside truck body, make a great haywagon, weather tight, curtains are in good condition. Notes: Item Location: Norwalk, IA 50211 Equipment Sold "AS IS, WHERE IS": All equipment/property is sold "AS IS, WHERE IS" with no warranty or guarantees, expressed or implied, No operational assessments have been made by DPA Auctions on this item, it has been photographed ONLY.



#336 - Hoelscher 100 Hay Grapple (Pz9521)

Hoelscher 100 Hay Grapple (Pz9521), Hoelscher model 100 hay grapple, heavy duty skid loader style mounts, includes guide. Notes: Good condition, always kept inside. Item Location: Norwalk, IA 50211 Equipment Sold "AS IS, WHERE IS": All equipment/property is sold "AS IS, WHERE IS" with no warranty or guarantees, expressed or implied, No operational assessments have been made by DPA Auctions on this item, it has been photographed ONLY.



#337 - Loader Mounts (PZ9522)

Loader Mounts (PZ9522), Loader mounts, last used on hay grapple & Westendorf loader, hardware. Notes: Excellent condition. Item Location: Norwalk, IA 50211 Equipment Sold "AS IS, WHERE IS": All equipment/property is sold "AS IS, WHERE IS" with no warranty or guarantees, expressed or implied, No operational assessments have been made by DPA Auctions on this item, it has been photographed ONLY.



#338 - New Lundell Inoculator (PZ9523)

New Lundell Inoculator (PZ9523), Lundell free flow inoculator, PVC is not glued. Notes: New, never used. Item Location: Norwalk, IA 50211 Equipment Sold "AS IS, WHERE IS": All equipment/property is sold "AS IS, WHERE IS" with no warranty or guarantees, expressed or implied, No operational assessments have been made by DPA Auctions on this item, it has been photographed ONLY.



#339 - 2015 H & S Enorossi Tedder (PZ9525)

2015 H & S Enorossi Tedder (PZ9525), 2015 H & S Enorossi model G6V-740 PTH Vortex, six basket tedder, light kit, new wheel bearings, extra tines included, very low total acres. Notes: No cracks, welds or breaks. Item Location: Norwalk, IA 50211 Equipment Sold "AS IS, WHERE IS": All equipment/property is sold "AS IS, WHERE IS" with no warranty or guarantees, expressed or implied, No operational assessments have been made by DPA Auctions on this item, it has been photographed ONLY.



#340 - 1968 John Deere 3020D Tractor (PZ9524)

1968 John Deere 3020D Tractor (PZ9524), diesel engine, Syncro Range transmission, 1 hydraulic remote, Roll-O- Matic narrow front, 540/1000 RPM PTO, 3 point hitch, JD block heater, 12VDC electrical, New front tires and batteries. Notes: Total hours are unknown, 1 owner, original condition, finish and sheet metal is near perfect, wheels have been repainted, currently being used for light mowing. Item Location: Norwalk, IA 50211 Equipment Sold "AS IS, WHERE IS": All equipment/property is sold "AS IS, WHERE IS" with no warranty or guarantees, expressed or implied, No operational assessments have been made by DPA Auctions on this item, it has been photographed ONLY.



#341 - 2014 Zuidberg Front PTO/3 Point Hitch (PZ9526)

2014 Zuidberg Front PTO/3 Point Hitch (PZ9526), 2014 Zuidberg model 50Kn front hitch/PTO combo, 1-3/8" 1000 RPM PTO, includes 2 remotes, PTO cover, flow control valve and 3rd link. Notes: Removed from a T7 standard steer New Holland, fits New Holland, CaseIH mid frame tractors and others, excellent condition, Panel switch is NOT included. Item Location: Norwalk, IA 50211 Equipment Sold "AS IS, WHERE IS": All equipment/property is sold "AS IS, WHERE IS" with no warranty or guarantees, expressed or implied, No operational assessments have been made by DPA Auctions on this item, it has been photographed ONLY.



#342 - New Holland/CaseIH PTO (PZ9527)

New Holland/CaseIH PTO (PZ9527), New Holland/CaseIH PTO, 1-3/4 X Spline PTO stub shaft, fits New Holland and CaseIH mid frame & large frame tractors. Notes: Item Location: Norwalk, IA 50211 Equipment Sold "AS IS, WHERE IS": All equipment/property is sold "AS IS, WHERE IS" with no warranty or guarantees, expressed or implied, No operational assessments have been made by DPA Auctions on this item, it has been photographed ONLY.



#344 - 1950 Beaird NH3 Storage Tank (PZ9543)

1950 Beaird NH3 Storage Tank (PZ9543), 1950 Beaird 30,057 gallon NH3 storage tank, Magnetel tank volume gauge, data plate. Notes: This storage tank must be removed by October 26th, 2018 with NO exceptions. Dismantle, removal and transportation is at the expense, risk and liability of the buyer. Item Location: Knox City, MO 63446 Equipment Sold "AS IS, WHERE IS": All equipment/property is sold "AS IS, WHERE IS" with no warranty or guarantees, expressed or implied, No operational assessments have been made by DPA Auctions on this item, it has been photographed ONLY.



#345 - Delta Southern NH3 Storage Tank (PZ9544)

Delta Southern NH3 Storage Tank (PZ9544), Delta Southern 12,000 gallon NH3 storage tank, tank volume gauge, data plate, National Board #1667, HSB NO 65-82662-2. Notes: This storage tank must be removed by October 26th, 2018 with NO exceptions. Dismantle, removal and transportation is at the expense, risk and liability of the buyer. Item Location: Knox City, MO 63446 Equipment Sold "AS IS, WHERE IS": All equipment/property is sold "AS IS, WHERE IS" with no warranty or guarantees, expressed or implied, No operational assessments have been made by DPA Auctions on this item, it has been photographed ONLY.



#346 - John Deere Stalk Chopper (PZ9541)

John Deere Stalk Chopper (PZ9541), John Deere 120 8 row stalk chopper, 1000 rpm, good hoods, 1 season on NEW rotor bearings, good hammers, 1 NEW rotor drive belt and extra hammers included. Notes: Item Location: Ionia, IA 50645 Equipment Sold "AS IS, WHERE IS": All equipment/property is sold "AS IS, WHERE IS" with no warranty or guarantees, expressed or implied, No operational assessments have been made by DPA Auctions on this item, it has been photographed ONLY.



#347 - Westfield Grain Auger (PZ9542)

Westfield Grain Auger (PZ9542), Westfield 13"x81 plus grain auger, hydraulic lift, good gear boxes, flighting shows average wear, auger tube has been patched in several places, portable, PTO. Notes: Item Location: Ionia, IA 50645 Equipment Sold "AS IS, WHERE IS": All equipment/property is sold "AS IS, WHERE IS" with no warranty or guarantees, expressed or implied, No operational assessments have been made by DPA Auctions on this item, it has been photographed ONLY.



#348 - John Deere 2270 Windrower (PZ9536)

John Deere 2270 Windrower (PZ9536), John Deere 2270 self propelled windrower, diesel engine, cab, lights, 14' head, rusted beyond repair, this machine is for parts or fitment of a replacement head. Notes: Machine for parts only. Item Location: Norwalk, IA 50211 Equipment Sold "AS IS, WHERE IS": All equipment/property is sold "AS IS, WHERE IS" with no warranty or guarantees, expressed or implied, No operational assessments have been made by DPA Auctions on this item, it has been photographed ONLY.



#349 - Global Mount Hay Spear (PZ9538)

Global Mount Hay Spear (PZ9538), Global mount hay spear, spear points are replaceable, excellent condition. Notes: No cracks, breaks or welds. Item Location: Norwalk, IA 50211 Equipment Sold "AS IS, WHERE IS": All equipment/property is sold "AS IS, WHERE IS" with no warranty or guarantees, expressed or implied, No operational assessments have been made by DPA Auctions on this item, it has been photographed ONLY.



#350 - 2014 New Holland Hay Spear (PZ9539)

2014 New Holland Hay Spear (PZ9539), 2014 New Holland heavy duty spear, skid mounts, spear points are replaceable, excellent condition. Notes: Item Location: Norwalk, IA 50211 Equipment Sold "AS IS, WHERE IS": All equipment/property is sold "AS IS, WHERE IS" with no warranty or guarantees, expressed or implied, No operational assessments have been made by DPA Auctions on this item, it has been photographed ONLY.



#351 - John Deere Hammerstrap (PZ9537)

John Deere Hammerstrap (PZ9537), John Deere Hammerstrap for 8XXX series, complete, excellent condition. Notes: Item Location: Norwalk, IA 50211 Equipment Sold "AS IS, WHERE IS": All equipment/property is sold "AS IS, WHERE IS" with no warranty or guarantees, expressed or implied, No operational assessments have been made by DPA Auctions on this item, it has been photographed ONLY.



#352 - IMT Air Compressor (PZ9540)

IMT Air Compressor (PZ9540), IMT model 550571 air compressor, high CFM for tire truck applications, Never used believed to be in NEW condition, original factory skid. Notes: Item Location: Norwalk, IA 50211 Equipment Sold "AS IS, WHERE IS": All equipment/property is sold "AS IS, WHERE IS" with no warranty or guarantees, expressed or implied, No operational assessments have been made by DPA Auctions on this item, it has been photographed ONLY.



#353 - Browning Tower (NP6839)

Browning Tower (NP6839), 8' x 8' x 50' tower, down and ready to load. Notes: Item Location: Eustis, NE 69028 Equipment Sold "AS IS, WHERE IS": All equipment/property is sold "AS IS, WHERE IS" with no warranty or guarantees, expressed or implied, No operational assessments have been made by DPA Auctions on this item, it has been photographed ONLY.



#354 - Brownie Drive (NP6840)

Brownie Drive (NP6840), Brownie 4155MTP15 - gear ratio 13.9792 was running (no bushing) when taken off ribbon mixer. Notes: Seller will load. Item Location: Carroll, IA 51401 Equipment Sold "AS IS, WHERE IS": All equipment/property is sold "AS IS, WHERE IS" with no warranty or guarantees, expressed or implied, No operational assessments have been made by DPA Auctions on this item, it has been photographed ONLY.



#355 - NEW GSI Pit (NP6841)

NEW GSI Pit (NP6841), GSI (NO Discharge) pit 3' wide 3' deep 9' 6" long trough 15 1/2" wide. Notes: Seller will load. Item Location: Galva, IL 61434 Equipment Sold "AS IS, WHERE IS": All equipment/property is sold "AS IS, WHERE IS" with no warranty or guarantees, expressed or implied, No operational assessments have been made by DPA Auctions on this item, it has been photographed ONLY.



#356 - Greg Leg (NP6842)

Greg Leg (NP6842), 100' grian leg, leg specks - head pulley - trunk - drive - motor belt 10", buckets 9" x 6" = 100 above ground - boot good - distributor - spouting - 3.5KBU. Notes: Seller will load. Item Location: Alma, NE 68920 Equipment Sold "AS IS, WHERE IS": All equipment/property is sold "AS IS, WHERE IS" with no warranty or guarantees, expressed or implied, No operational assessments have been made by DPA Auctions on this item, it has been photographed ONLY.



#357 - 2007 Honda TRX500 (TR5700)

2007 Honda TRX500 (TR5700), Rubicon, 4x4, 499 CC engine, automatic transmission, runs great, ready for work, AT25x8-12 front tires at 90%, AT25x10-12 rear tires at 50%, 3173 miles, 355 hours. Notes: Item Location: De Witt, NE 68341 Equipment Sold "AS IS, WHERE IS": All equipment/property is sold "AS IS, WHERE IS" with no warranty or guarantees, expressed or implied, No operational assessments have been made by DPA Auctions on this item, it has been photographed ONLY.



#358 - Layco 35 Foot Conveyor (ED555)

Layco 35 Foot Conveyor (ED555), conveyor needs some TLC, electric motor is single phase and in working condition. Notes: Item Location: Blue Mound, IL 62513 Equipment Sold "AS IS, WHERE IS": All equipment/property is sold "AS IS, WHERE IS" with no warranty or guarantees, expressed or implied, No operational assessments have been made by DPA Auctions on this item, it has been photographed ONLY.



#359 - 500 Gallon Fuel Tank (ED551)

500 Gallon Fuel Tank (ED551), fuel tank has a Gasboy pump. Notes: Item Location: Blue Mound, IL 62513 Equipment Sold "AS IS, WHERE IS": All equipment/property is sold "AS IS, WHERE IS" with no warranty or guarantees, expressed or implied, No operational assessments have been made by DPA Auctions on this item, it has been photographed ONLY.



#360 - 2002 Challenger MT645 Tractor (ED554)

2002 Challenger MT645 Tractor (ED554), Sisu diesel engine, 180 HP, power shift transmission, 1000 PTO, AM/FM radio, heat/AC works, 18.4-R46 tires, front tires are 90%, rear tires are 25%, tractor runs good, clean and mechanically sound, does not have top link for a 3 point, shows 4668 hours. Notes: Item Location: Blue Mound, IL 62513 Equipment Sold "AS IS, WHERE IS": All equipment/property is sold "AS IS, WHERE IS" with no warranty or guarantees, expressed or implied, No operational assessments have been made by DPA Auctions on this item, it has been photographed ONLY.



#361 - Used Oil Tank (ED552)

Used Oil Tank (ED552), tank measures 36" across and 68" long, tank holds approximately 300 gallons. Notes: Item Location: Blue Mound, IL 62513 Equipment Sold "AS IS, WHERE IS": All equipment/property is sold "AS IS, WHERE IS" with no warranty or guarantees, expressed or implied, No operational assessments have been made by DPA Auctions on this item, it has been photographed ONLY.



#362 - Offset Smoker 2" Insulated Firebox (ED553)

Offset Smoker 2" Insulated Firebox (ED553), stainless work table, 30 gallon fresh water tank, storage boxes and a propane burner for deep frying or lighting charcoal, cooking chamber is 5/8 thick steel, will hold 250 lbs. of meat. Notes: The trailer does not have a title. Item Location: Blue Mound, IL 62513 Equipment Sold "AS IS, WHERE IS": All equipment/property is sold "AS IS, WHERE IS" with no warranty or guarantees, expressed or implied, No operational assessments have been made by DPA Auctions on this item, it has been photographed ONLY.



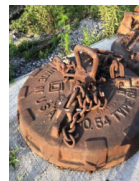
#363 - 1995 White/GMC Conventional WG Day Cab (PD839)

1995 White/GMC Conventional WG Day Cab (PD839), 3306DI Engine, Eaton 9 speed transmission, AM/FM, 11R22 tires, working PTO, air works, crash bar, shows 119,000 miles. Notes: Item Location: West Terre Haute, IN 47885 Equipment Sold "AS IS, WHERE IS": All equipment/property is sold "AS IS, WHERE IS" with no warranty or guarantees, expressed or implied, No operational assessments have been made by DPA Auctions on this item, it has been photographed ONLY.



#364 - Square D 54 Inch Magnet (PD840)

Square D 54 Inch Magnet (PD840), working, scrap yard used, chain clasp included. Notes: Item Location: West Terre Haute, IN 47885 Equipment Sold "AS IS, WHERE IS": All equipment/property is sold "AS IS, WHERE IS" with no warranty or guarantees, expressed or implied, No operational assessments have been made by DPA Auctions on this item, it has been photographed ONLY.



#365 - Square D 55 Inch Magnet (PD841)

Square D 55 Inch Magnet (PD841), working, scrap yard used, chain clasp included. Notes: Item Location: West Terre Haute, IN 47885 Equipment Sold "AS IS, WHERE IS": All equipment/property is sold "AS IS, WHERE IS" with no warranty or guarantees, expressed or implied, No operational assessments have been made by DPA Auctions on this item, it has been photographed ONLY.



#366 - National Electric 66 Inch Magnet (PD842)

National Electric 66 Inch Magnet (PD842), working, scrap yard used, chain clasp included. Notes: Item Location: West Terre Haute, IN 47885 Equipment Sold "AS IS, WHERE IS": All equipment/property is sold "AS IS, WHERE IS" with no warranty or guarantees, expressed or implied, No operational assessments have been made by DPA Auctions on this item, it has been photographed ONLY.



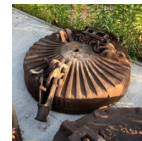
#367 - Ohio 23 Inch Magnet (PD843)

Ohio 23 Inch Magnet (PD843), working, scrap yard used, chain clasp included. Notes: Item Location: West Terre Haute, IN 47885 Equipment Sold "AS IS, WHERE IS": All equipment/property is sold "AS IS, WHERE IS" with no warranty or guarantees, expressed or implied, No operational assessments have been made by DPA Auctions on this item, it has been photographed ONLY.



#368 - Ohio 23 Inch Magnet (PD844)

Ohio 23 Inch Magnet (PD844), working, scrap yard used, chain clasp included. Notes: Item Location: West Terre Haute, IN 47885 Equipment Sold "AS IS, WHERE IS": All equipment/property is sold "AS IS, WHERE IS" with no warranty or guarantees, expressed or implied, No operational assessments have been made by DPA Auctions on this item, it has been photographed ONLY.



#369 - Square D 45 Inch Magnet (PD845)

Square D 45 Inch Magnet (PD845), working, scrap yard used, chain clasp included. Notes: Item Location: West Terre Haute, IN 47885 Equipment Sold "AS IS, WHERE IS": All equipment/property is sold "AS IS, WHERE IS" with no warranty or guarantees, expressed or implied, No operational assessments have been made by DPA Auctions on this item, it has been photographed ONLY.



#370 - Cram A Lot Furnace Compactor (PD849)

Cram A Lot Furnace Compactor (PD849), good working condition. Notes: Item Location: West Terre Haute, IN 47885 Equipment Sold "AS IS, WHERE IS": All equipment/property is sold "AS IS, WHERE IS" with no warranty or guarantees, expressed or implied, No operational assessments have been made by DPA Auctions on this item, it has been photographed ONLY.



#371 - Square D 40 Inch Magnet (PD846)

Square D 40 Inch Magnet (PD846), working, scrap yard used, chain clasp included. Notes: Item Location: West Terre Haute, IN 47885 Equipment Sold "AS IS, WHERE IS": All equipment/property is sold "AS IS, WHERE IS" with no warranty or guarantees, expressed or implied, No operational assessments have been made by DPA Auctions on this item, it has been photographed ONLY.



#372 - Square D 40 Inch Magnet (PD847)

Square D 40 Inch Magnet (PD847), working, scrap yard used, chain clasp included. Notes: Item Location: West Terre Haute, IN 47885 Equipment Sold "AS IS, WHERE IS": All equipment/property is sold "AS IS, WHERE IS" with no warranty or guarantees, expressed or implied, No operational assessments have been made by DPA Auctions on this item, it has been photographed ONLY.



#373 - Cram A Lot Furnace Compactor (PD848)

Cram A Lot Furnace Compactor (PD848), new cylinder, still working, good condition. Notes: Item Location: West Terre Haute, IN 47885 Equipment Sold "AS IS, WHERE IS": All equipment/property is sold "AS IS, WHERE IS" with no warranty or guarantees, expressed or implied, No operational assessments have been made by DPA Auctions on this item, it has been photographed ONLY.



#375 - Tyler Tender Box (DR9453)

Tyler Tender Box (DR9453), 16 ton stainless steel dry fertilizer tender box, hydraulic rear auger, roll over tarp. Notes: Item Location: Brownsdale, MN 55918 Equipment Sold "AS IS, WHERE IS": All equipment/property is sold "AS IS, WHERE IS" with no warranty or guarantees, expressed or implied, No operational assessments have been made by DPA Auctions on this item, it has been photographed ONLY.



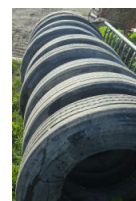
#376 - Wetherell 24' Sprayer Attachment (AL424)

Wetherell 24' Sprayer Attachment (AL424), one seat missing, no pump, hoses and wands will need repair. Notes: Item Location: Nemaha, IA 50567 Equipment Sold "AS IS, WHERE IS": All equipment/property is sold "AS IS, WHERE IS" with no warranty or guarantees, expressed or implied, No operational assessments have been made by DPA Auctions on this item, it has been photographed ONLY.



#377 - (9) Nine 275/80R22.5 Semi Tires (AL423)

(9) Nine 275/80R22.5 Semi Tires (AL423), tread ranges from 4/32 to 13/32, tires are from fleet trailers, some have flat spots but all appear to be DOT legal. Notes: Item Location: Nemaha, IA 50567 Equipment Sold "AS IS, WHERE IS": All equipment/property is sold "AS IS, WHERE IS" with no warranty or guarantees, expressed or implied, No operational assessments have been made by DPA Auctions on this item, it has been photographed ONLY.



#378 - 2006 Chevy Impala LT (ED556)

2006 Chevy Impala LT (ED556), 3500 V-6 engine, flex fuel package, auto transmission, AM/FM radio, CD, tilt wheel, power windows, locks, mirrors, seat, 50% tires, remote start, cloth interior in good condition, no cracked glass, 1 remote key fob, engine has a miscellaneous engine code- mass air flow sensor and misfire on cylinder Code 300, shows 133,000 miles. Notes: Engine has a miscellaneous engine code: mass air flow sensor and misfire on cylinder Code 300. Item Location: Sioux City, IA 51106 Equipment Sold "AS IS, WHERE IS": All equipment/property is sold "AS IS, WHERE IS" with no warranty or guarantees, expressed or implied, No operational assessments have been made by DPA Auctions on this item, it has been photographed ONLY.



#379 - 2001 CaseIH SPX4260 (DL274)

2001 CaseIH SPX4260 (DL274), self-propelled sprayer, diesel engine, hydrostatic transmission, heat & a/c, am/fm radio, 1200 gallon stainless steel liquid system, 90ft booms, aim commands, shows 4789 hours. Notes: Item Location: Springfield, MN 56087 Equipment Sold "AS IS, WHERE IS": All equipment/property is sold "AS IS, WHERE IS" with no warranty or guarantees, expressed or implied, No operational assessments have been made by DPA Auctions on this item, it has been photographed ONLY.



#381 - Squib Taylor Break Aways (PZ9571)

Squib Taylor Break Aways (PZ9571), 4 - Squib Tylor NH3 break aways. Notes: Item Location: New Berlin, IL 62670 Equipment Sold "AS IS, WHERE IS": All equipment/property is sold "AS IS, WHERE IS" with no warranty or guarantees, expressed or implied, No operational assessments have been made by DPA Auctions on this item, it has been photographed ONLY.



#382 - Koyker 585 Loader (DL273)

Koyker 585 Loader (DL273), Koyker 585 loader, came off of John Deere 7520, mounts included, no joystick. Notes: Item Location: Midland, SD 57552 Equipment Sold "AS IS, WHERE IS": All equipment/property is sold "AS IS, WHERE IS" with no warranty or guarantees, expressed or implied, No operational assessments have been made by DPA Auctions on this item, it has been photographed ONLY.



#384 - 2009 John Deere 568 Mega Wide Round Baler (KMK479)

2009 John Deere 568 Mega Wide Round Baler (KMK479), mega wide round baler, 5'x6' bale, net and twine wrap, cover edge, kicker, 1000 pto., gage wheels, new 21.5-L16.1 tires, shows 22,969 bales. Notes: New drive shaft, rebuilt pickup head all new chains and sprockets. Item Location: Wallace, NE 69169 Equipment Sold "AS IS, WHERE IS": All equipment/property is sold "AS IS, WHERE IS" with no warranty or guarantees, expressed or implied, No operational assessments have been made by DPA Auctions on this item, it has been photographed ONLY.



#385 - 2007 Keystone Montana 5th Wheel Trailer (KMK524)

2007 Keystone Montana 5th Wheel Trailer (KMK524), Montana 3075 RL, Keystone, 35' length, 5th wheel travel trailer, GVWR 14210, three (3) slide outs, 5-6 person sleeping capacity, bathroom toilet, sink, and shower, king bed and dresser & closet, full size pull out couch, solid hardwood trim and cabinets, tons of inside and outside storage, ceiling fan, full galley style kitchen, black appliances, refrigerator, sink, convection microwave, gas oven with stove top, overhead power vent fan. Notes: Trailer is in great condition. Very little use. Item Location: Wallace, NE 69169 Equipment Sold "AS IS, WHERE IS": All equipment/property is sold "AS IS, WHERE IS" with no warranty or guarantees, expressed or implied, No operational assessments have been made by DPA Auctions on this item, it has been photographed ONLY.



#386 - 2006 TerraGator 8103 with New Leader 3020 G4 Dry Box (ED507)

2006 TerraGator 8103 with New Leader 3020 G4 Dry Box (ED507), John Deere diesel engine SN: RG6081H283469, Terra Shift transmission, Raven Viper Pro monitor, 12.5' dry box, brand new turbo and rebuilt oil cooler, this unit is ready to go to the field, tires are in good shape, 40% tread, shows 6832 hours. Notes: Machine hours may go up as this rig is still in service. Item Location: Blissfield, MI 49228 Equipment Sold "AS IS, WHERE IS": All equipment/property is sold "AS IS, WHERE IS" with no warranty or guarantees, expressed or implied, No operational assessments have been made by DPA Auctions on this item, it has been photographed ONLY.



#387 - 3306 Cat Motor With Radiator (AL370)

3306 Cat Motor With Radiator (AL370), complete engine, 2 large hydraulic pumps attached, comes with reservoir. Notes: Item Location: Sioux City, IA 51101 Equipment Sold "AS IS, WHERE IS": All equipment/property is sold "AS IS, WHERE IS" with no warranty or guarantees, expressed or implied, No operational assessments have been made by DPA Auctions on this item, it has been photographed ONLY.



#388 - Blue Jet Anhydrous Applicator (AL428)

Blue Jet Anhydrous Applicator (AL428), 14 shank knife, all new hoses and lines, walking tandems, with new Raven shut offs, only has been used on 100 acres, cooling unit has been rebuilt. Notes: Item Location: Arbela, MO 63432 Equipment Sold "AS IS, WHERE IS": All equipment/property is sold "AS IS, WHERE IS" with no warranty or guarantees, expressed or implied, No operational assessments have been made by DPA Auctions on this item, it has been photographed ONLY.



#389 - 6600 John Deere Combine with John Deere 443 Corn Head and 216 Bean Head (AL426)

6600 John Deere Combine with John Deere 443 Corn Head and 216 Bean Head (AL426), HYD transmission, field ready, tires 65%, does good in corn or beans, shows 4118 hours, 4 row John Deere 443 Corn Head, good snap rollers and gatherers, chains only used on 100 acres, 216 bean head, auger fingers in good shape. Notes: Item Location: Arbela, MO 63432 Equipment Sold "AS IS, WHERE IS": All equipment/property is sold "AS IS, WHERE IS" with no warranty or guarantees, expressed or implied, No operational assessments have been made by DPA Auctions on this item, it has been photographed ONLY.



#390 - TR86 New Holland Combine with New Holland Corn Head and Bean Head (AL427)

TR86 New Holland Combine with New Holland Corn Head and Bean Head (AL427), 4x4, HYD, tires 75%, field ready, shows 4242 hours, New Holland 964 6 row corn head, snap rollers and gathering chains in good shape, New Holland 973 Bean Head, good reel fingers and drum fingers, has stainless steel belly pan. Notes: Item Location: Arbela, MO 63432 Equipment Sold "AS IS, WHERE IS": All equipment/property is sold "AS IS, WHERE IS" with no warranty or guarantees, expressed or implied, No operational assessments have been made by DPA Auctions on this item, it has been photographed ONLY.



#391 - 7700 John Deere Combine With 220 Bean Head (AL429)

7700 John Deere Combine With 220 Bean Head (AL429), diesel engine with turbo, HYD transmission, tires 65%, shows 4786 hours, 220 bean head in good working order. Notes: Item Location: Arbela, MO 63432 Equipment Sold "AS IS, WHERE IS": All equipment/property is sold "AS IS, WHERE IS" with no warranty or guarantees, expressed or implied, No operational assessments have been made by DPA Auctions on this item, it has been photographed ONLY.



#392 - 7060 Allis Chalmers with Bueller/ Allied Loader (AL425)

7060 Allis Chalmers with Bueller/ Allied Loader (AL425), 160 HP, has new two year turbo, has heat and new A/C lines and pump put on two years ago, rebuilt factory seat, one remote doesn't work the other two remotes work great, tires 70% in back, brand new front tires, comes with 795 Bueller/Allied loader, loader is in very good shape, shows 7260 hours. Notes: \$8,000 spent on power director 200 hours ago Item Location: Arbela, MO 63432 Equipment Sold "AS IS, WHERE IS": All equipment/property is sold "AS IS, WHERE IS" with no warranty or guarantees, expressed or implied, No operational assessments have been made by DPA Auctions on this item, it has been photographed ONLY.



#393 - 4690 Case Tractor (AL430)

4690 Case Tractor (AL430), 3 point with PTO, 4x4, dual tires in front and rear, heat and A/C works great, inside tires 70%, outside tires 50%, 32.5 main tires, 20.8x38 clamp on duals, shows 5498 hours. Notes: Item Location: Arbela, MO 63432 Equipment Sold "AS IS, WHERE IS": All equipment/property is sold "AS IS, WHERE IS" with no warranty or guarantees, expressed or implied, No operational assessments have been made by DPA Auctions on this item, it has been photographed ONLY.



#394 - 2008 John Deere 325 Skid Steer (DL275)

2008 John Deere 325 Skid Steer (DL275), 2 speed transmission, diesel engine, auxiliary hydraulics, all new injectors, 76hp & 2,500lb lift, always shedded, ice cold A/C and excellent heater in the winter, electric quick attach, comes with bucket and 2 brand new tires that were never mounted, shows 1877 hours. Notes: Well taken care of machine with routine maintenance done. Item Location: Roscoe, SD 57471 Equipment Sold "AS IS, WHERE IS": All equipment/property is sold "AS IS, WHERE IS" with no warranty or guarantees, expressed or implied, No operational assessments have been made by DPA Auctions on this item, it has been photographed ONLY.



#395 - Clipper 67D Cleaner (TR0001)

Clipper 67D Cleaner. (TR0001) Clipper 67D CleanerHas ball trays for the screen I have a few extra parts to go with this, and your option on the duct work (If you don't want certain pieces of duct, I'll keep them for any possible projects around here). Cleaner goes with the I beam stand, but that stand can easily be manufactured to a different size if needed. Measurements: Stand height = 34.5 inches (floor to very top of the rails) , Overall width (outside to outside) = 66? (not including the discharge auger, since that could easily be shortened) , Overall length (outside to outside) = 107? (not including any duct work) , Overall Height (from the bottom of the wood or top of the steel stand to the very top of the cleaner) = 81? TIGHT, overall total height right now would be about 116?. Notes: Item Location: Riceville, IA 50466 Equipment Sold "AS IS, WHERE IS": All equipment/property is sold "AS IS, WHERE IS" with no warranty or guarantees, expressed or implied, No operational assessments have been made by DPA Auctions on this item, it has been photographed ONLY.



#397 - Clipper Cleaner Screens (NJP1278)

Clipper Cleaner Screens (NJP1278) various Clipper cleaner screens. Notes: Item Location: Riceville, IA 50466 Equipment Sold "AS IS, WHERE IS": All equipment/property is sold "AS IS, WHERE IS" with no warranty or guarantees, expressed or implied, No operational assessments have been made by DPA Auctions on this item, it has been photographed ONLY.



#398 - Universal 30' leg (NJP1276)

Universal 30' leg (NJP1276) double trunk, cups included, (BLUE) . Notes: Item Location: Riceville, IA 50466 Equipment Sold "AS IS, WHERE IS": All equipment/property is sold "AS IS, WHERE IS" with no warranty or guarantees, expressed or implied, No operational assessments have been made by DPA Auctions on this item, it has been photographed ONLY.



#399 - Grain Leg (NJP1275)

Grain Leg (NJP1275) 15' leg, cups included, (WHITE) . Notes: Item Location: Riceville, IA 50466 Equipment Sold "AS IS, WHERE IS": All equipment/property is sold "AS IS, WHERE IS" with no warranty or guarantees, expressed or implied, No operational assessments have been made by DPA Auctions on this item, it has been photographed ONLY.



#400 - Weigh buggy (NJP1272)

Weigh buggy (NJP1272) Grain Belt weigh buggy with scale. Notes: Item Location: Riceville, IA 50466 Equipment Sold "AS IS, WHERE IS": All equipment/property is sold "AS IS, WHERE IS" with no warranty or guarantees, expressed or implied, No operational assessments have been made by DPA Auctions on this item, it has been photographed ONLY.



#401 - 1984 Ray Mac Feed Trailer (NJP1279)

1984 Ray Mac Feed Trailer (NJP1279) single axle, overhead auger, hydraulic, 11R22.5 tires. Notes: Item Location: Riceville, IA 50466 Equipment Sold "AS IS, WHERE IS": All equipment/property is sold "AS IS, WHERE IS" with no warranty or guarantees, expressed or implied, No operational assessments have been made by DPA Auctions on this item, it has been photographed ONLY.



#402 - 1990 Wilson Grain Trailer (NJP1280)

1990 Wilson Grain Trailer (NJP1280) tandem axle, commodity grain trailer, (2) Hoppers, 94" sides, 48' length, end gate, air brakes, 285/75R24.5 tires. Notes: Item Location: Riceville, IA 50466 Equipment Sold "AS IS, WHERE IS": All equipment/property is sold "AS IS, WHERE IS" with no warranty or guarantees, expressed or implied, No operational assessments have been made by DPA Auctions on this item, it has been photographed ONLY.



#403 - Champion Industrial Air Compressor (NJP1270)

Champion Industrial Air Compressor (NJP1270) model HR10-12, industrial size air compressor, 10 HP electric motor, 1760 RPM. Notes: Item Location: Riceville, IA 50466 Equipment Sold "AS IS, WHERE IS": All equipment/property is sold "AS IS, WHERE IS" with no warranty or guarantees, expressed or implied, No operational assessments have been made by DPA Auctions on this item, it has been photographed ONLY.



#404 - Industrial Air Compressor (NJP1271)

Industrial Air Compressor (NJP1271) model E-71 M80, electric motor. Notes: Item Location: Riceville, IA 50466 Equipment Sold "AS IS, WHERE IS": All equipment/property is sold "AS IS, WHERE IS" with no warranty or guarantees, expressed or implied, No operational assessments have been made by DPA Auctions on this item, it has been photographed ONLY.



#405 - Halogen Shop Lights (NJP1277)

Halogen Shop Lights (NJP1277) (6) Halogen Shop lights. Notes: Item Location: Riceville, IA 50466 Equipment Sold "AS IS, WHERE IS": All equipment/property is sold "AS IS, WHERE IS" with no warranty or guarantees, expressed or implied, No operational assessments have been made by DPA Auctions on this item, it has been photographed ONLY.



#406 - 1985 Fruehauf Flatbed Trailer, Unit #38560 (NJP1281)

1985 Fruehauf Flatbed Trailer, Unit #38560 (NJP1281), 45' tandem axle, air ride, air brakes, 295/75R22.5 tires, side hanging tool boxes. Notes: PLEASE ALLOW AT LEAST 60 DAYS FOR TITLE TRANSFER. Item Location: Ogden, IA 50212 Equipment Sold "AS IS, WHERE IS": All equipment/property is sold "AS IS, WHERE IS" with no warranty or guarantees, expressed or implied, No operational assessments have been made by DPA Auctions on this item, it has been photographed ONLY.



#407 - 2010 Chevrolet Traverse LT (NJP1282) Unit# 17561

2010 Chevrolet Traverse LT (NJP1282), Unit# 17561, gas engine, automatic transmission, P255/65R18, AWD, 3rd row seating, power windows/locks/seats, AM/FM CD player, Heat/AC, cruise control, steering wheel control, has 275,000 miles. Notes: **Motor is blown. PLEASE ALLOW AT LEAST 60 DAYS FOR TITLE TRANSFER. Item Location: Ogden, IA 50212 Equipment Sold "AS IS, WHERE IS": All equipment/property is sold "AS IS, WHERE IS" with no warranty or guarantees, expressed or implied, No operational assessments have been made by DPA Auctions on this item, it has been photographed ONLY.



#408 - Gear Reducers (NJP1274)

Gear Reducers (NJP1274) (2) Gear reducers. Notes: Item Location: Riceville, IA 50466 Equipment Sold "AS IS, WHERE IS": All equipment/property is sold "AS IS, WHERE IS" with no warranty or guarantees, expressed or implied, No operational assessments have been made by DPA Auctions on this item, it has been photographed ONLY.



#409 - NH3 1000 gallon Nurse Tank (PZ9578, Unit 21099)

NH3 1000 gallon Nurse Tank (PZ9578, Unit 21099), 1000 gallon NH3 nurse tank, top front fill, 5th wheel gear poly water tank, 11L-15 flotation tires, data plate. Notes: Item Location: Greene, IA 50636 Equipment Sold "AS IS, WHERE IS": All equipment/property is sold "AS IS, WHERE IS" with no warranty or guarantees, expressed or implied, No operational assessments have been made by DPA Auctions on this item, it has been photographed ONLY.



#410 - 2005 Tige 22V (CG523)

2005 Tige 22V (CG523), Mercruiser 340 hp, snap on covers, bimini top, tower, tower speakers, taps system, tandem axle trailer. Notes: Item Location: Valley, NE 68064 Equipment Sold "AS IS, WHERE IS": All equipment/property is sold "AS IS, WHERE IS" with no warranty or guarantees, expressed or implied, No operational assessments have been made by DPA Auctions on this item, it has been photographed ONLY.



#411 - 2006 Sun Tracker 22 Party Barge Bass Tracker 24' (CG524)

2006 Sun Tracker 22 Party Barge Bass Tracker 24' (CG524), mercury 25 hp 4 stroke, bimini top, removable table, depth finder. Notes: Item Location: Valley, NE 68064 Equipment Sold "AS IS, WHERE IS": All equipment/property is sold "AS IS, WHERE IS" with no warranty or guarantees, expressed or implied, No operational assessments have been made by DPA Auctions on this item, it has been photographed ONLY.



#412 - 2001 Bayliner 2050 Capri (CG525)

2001 Bayliner 2050 Capri (CG525), mercruiser 5.0 220 hp, tower, tower speakers, in floor storage, CD player, cover, depth finder, single axle trailer. Notes: Item Location: Valley, NE 68064 Equipment Sold "AS IS, WHERE IS": All equipment/property is sold "AS IS, WHERE IS" with no warranty or guarantees, expressed or implied, No operational assessments have been made by DPA Auctions on this item, it has been photographed ONLY.



#413 - 2011 Playcraft Sport 2500 (TR4021)

2011 Playcraft Sport 2500 (TR4021), furniture cover, Mercury 115hp 4 stroke, hydraulic steering, Bimini top. Notes: No trailer, but one can be purchased. Item Location: Valley, NE 68064 Equipment Sold "AS IS, WHERE IS": All equipment/property is sold "AS IS, WHERE IS" with no warranty or guarantees, expressed or implied, No operational assessments have been made by DPA Auctions on this item, it has been photographed ONLY.



#414 - 2006 Chevrolet Avalanche (TR5162)

2006 Chevrolet Avalanche (TR5162), gas engine, 4 door, automatic transmission, 4x4, heat/AC, AM/FM radio CD player, z71 package, bed cover, leather interior, power windows/locks/mirrors/seats, 70R17 tires, heated seats, 164,463 miles. Notes: Check Engine Light is on. Item Location: Fremont, NE 68025 Equipment Sold "AS IS, WHERE IS": All equipment/property is sold "AS IS, WHERE IS" with no warranty or guarantees, expressed or implied, No operational assessments have been made by DPA Auctions on this item, it has been photographed ONLY.



#415 - 2009 Cadillac DTS (TR5163)

2009 Cadillac DTS (TR5163), gas engine, automatic transmission, heat/AC, AM/FM CD radio, cruise control, leather interior, touch screen radio, dual climate control, power windows/seats/mirrors, steering wheel controls, 95963 miles. Notes: Service Engine Light is on. Item Location: Fremont, NE 68025 Equipment Sold "AS IS, WHERE IS": All equipment/property is sold "AS IS, WHERE IS" with no warranty or guarantees, expressed or implied, No operational assessments have been made by DPA Auctions on this item, it has been photographed ONLY.



#416 - 2003 Oldsmobile Bravada (TR5164)

2003 Oldsmobile Bravada (TR5164), 4.2 L gas engine, automatic transmission, AM/FM CD, tow hitch, SMARTTRAK, leather interior, rear climate control, power windows/locks/mirror, dual climate control, cruise control, steering wheel controls, 188,112 miles. Notes: Service Engine Soon light is on. Item Location: Fremont, NE 68025 Equipment Sold "AS IS, WHERE IS": All equipment/property is sold "AS IS, WHERE IS" with no warranty or guarantees, expressed or implied, No operational assessments have been made by DPA Auctions on this item, it has been photographed ONLY.



#417 - 2007 Chevrolet 3500 LT (TR5165)

2007 Chevrolet 3500 LT (TR5165), Automatic transmission, heat/AC, steering wheel controls, cruise control, power/windows/locks/mirrors, extended cab, 6.0L Gas engine, dually, 4x4, HD, bed liner, 5th wheel ball, running boards, 162,372 miles. Notes: Check Engine light is on. Miles exempt on the title. Item Location: Fremont, NE 68025 Equipment Sold "AS IS, WHERE IS": All equipment/property is sold "AS IS, WHERE IS" with no warranty or guarantees, expressed or implied, No operational assessments have been made by DPA Auctions on this item, it has been photographed ONLY.



#418 - 2007 Jeep Compass Limited (TR5166)

2007 Jeep Compass Limited (TR5166), 2.4L gas engine, automatic transmission, 4x4, 4 door, cruise control, AM/FM CD, Heat/AC, sunroof, leather interior, power windows/locks/mirrors, heated seats, 125,739 miles. Notes: Item Location: Fremont, NE 68025 Equipment Sold "AS IS, WHERE IS": All equipment/property is sold "AS IS, WHERE IS" with no warranty or guarantees, expressed or implied, No operational assessments have been made by DPA Auctions on this item, it has been photographed ONLY.



#419 - 2011 Chevrolet Tahoe LTZ (TR5167)

2011 Chevrolet Tahoe LTZ (TR5167), 5.3L gas engine, automatic transmission, sun roof, 4x4, heated leather seats, power seats/mirrors/windows/locks, AM/FM CD, DVD player, 3rd row removeable seating, split bucket rear seats, rear climate/audio control, dual climate control, cruise control, 177,015 miles. Notes: AC is weak. Item Location: Fremont, NE 68025 Equipment Sold "AS IS, WHERE IS": All equipment/property is sold "AS IS, WHERE IS" with no warranty or guarantees, expressed or implied, No operational assessments have been made by DPA Auctions on this item, it has been photographed ONLY.



#420 - 2004 Chevrolet Suburban (TR5168)

2004 Chevrolet Suburban (TR5168), 50.3L gas engine, automatic transmission, am/fm CD, Heat/AC, 3rd row seating, 4x4, rear audio control, power windows/locks/mirrors, leather interior, power seats, cruise control steering wheel controls, dual temperature control, 225,484 miles. Notes: Service Airbag light is on. Gauges are not working. Item Location: Fremont, NE 68025 Equipment Sold "AS IS, WHERE IS": All equipment/property is sold "AS IS, WHERE IS" with no warranty or guarantees, expressed or implied, No operational assessments have been made by DPA Auctions on this item, it has been photographed ONLY.



#421 - NEW Hitch Doc Fuel Trailer (TR002)

NEW Hitch Doc Fuel Trailer (TR002), NEW NEVER USED, model HFC750, tandem axle, 750 gallon fuel tank, 10 gauge double seam welded, tank is independent from chassis & can be removed, 2 full length baffles, 2" anti-slosh tank filler cap & vent, cap vents @ 2.5 PSI, 1 1/2" drain plug, electric brakes w/breakaway system & safety chains, liquid-two component pain & primer, 12 GPM 12 volt fuel pump, 1" x20' hose, auto shut off nozzle, 10 Micron filter, 7000 lb square lift jack, dual torsion axles 6000lb, DOT approved lights, 2 5/16 ball hitch, top mounted fuel gauge, 235/80R16 tires, bolt on fenders. Notes: Item Location: Fremont, NE 68025 Equipment Sold "AS IS, WHERE IS": All equipment/property is sold "AS IS, WHERE IS" with no warranty or guarantees, expressed or implied, No operational assessments have been made by DPA Auctions on this item, it has been photographed ONLY.



#422 - NEW Hitch Doc Fuel Trailer (TR003)

NEW Hitch Doc Fuel Trailer (TR003), NEW NEVER USED, model HFC750, front nose storage compartment, tandem axle, 750 gallon fuel tank, 10 gauge double seam welded, tank is independent from chassis & can be removed, 2 full length baffles, 2" anti-slosh tank filler cap & vent, cap vents @ 2.5 PSI, 1 1/2" drain plug, electric brakes w/breakaway system & safety chains, liquid-two component pain & primer 25 GPM 12 volt fuel pump, 1" x20' hose and retractable reel, rock guard kit, auto shut off nozzle, 10 Micron filter, 7000 lb square lift jack, dual torsion axles 6000lb, DOT approved lights, 2 5/16 ball hitch, top mounted fuel gauge, 235/80R16 tires, bolt on fenders. Notes: Pictures are stock photos, trailer is not painted white. Item Location: Fremont, NE 68025 Equipment Sold "AS IS, WHERE IS": All equipment/property is sold "AS IS, WHERE IS" with no warranty or guarantees, expressed or implied, No operational assessments have been made by DPA Auctions on this item, it has been photographed ONLY.

