

## Auction catalog

<b>Title</b>	Online Auction - June 5, 2018 10AM Central
<b>Description</b>	The following line of Fertilizer, Farm Implement, Truck, Trailer & Construction Equipment will be sold online with the bidding ending on June 5, 2018. Location of the equipment is given. Bidding within the last minute before the closing of a lot will extend the bidding time by an additional minute. Be prepared to bid accordingly. For more information, contact Del Peterson & Associates: 419 West Judy Drive Fremont NE, 68025 Phone: 800-492-9090 or 402-721-4388 Fax: 402-721-4583 E-mail: auction@delpeterson.com
<b>Date</b>	Tue, Jun 5, 2018
<b>Starts at</b>	10:00 AM
<b>Address</b>	PO Box 654, Fremont, NE 68026 USA
<b>Categories</b>	

### #1 - Terra Gator Boom Rack (DR8907)

Terra Gator Boom Rack (DR8907), 90' liquid boom rack, came off Terra Gator 9203, plumbed at 30" & 60" centers. Notes: Item Location: Tecumseh, MI 49286 Equipment Sold "AS IS, WHERE IS": All equipment/property is sold "AS IS, WHERE IS" with no warranty or guarantees, expressed or implied, No operational assessments have been made by DPA Auctions on this item, it has been photographed ONLY.



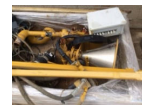
### #2 - Foam Tank (DR8908)

Foam Tank (DR8908), 55 gallon stainless steel foam tank, came off 9203 liquid system. Notes: Item Location: Tecumseh, MI 49286 Equipment Sold "AS IS, WHERE IS": All equipment/property is sold "AS IS, WHERE IS" with no warranty or guarantees, expressed or implied, No operational assessments have been made by DPA Auctions on this item, it has been photographed ONLY.



### #3 - Liquid System Parts (DR8909)

Liquid System Parts (DR8909), box of parts for Terra Gator liquid system, flow meter, hydraulic cooler, solenoids, stainless steel chemical inductor, 135 gallon saddle mount rinse tank. Notes: Item Location: Tecumseh, MI 49286 Equipment Sold "AS IS, WHERE IS": All equipment/property is sold "AS IS, WHERE IS" with no warranty or guarantees, expressed or implied, No operational assessments have been made by DPA Auctions on this item, it has been photographed ONLY.



### #4 - Hutchinson Sweep (DR8906)

Hutchinson Sweep (DR8906), 21' X 7" sweep auger, electric motor and drive assembly, came out of 42" diameter bin, is in VERY good condition. Notes: Item Location: Tecumseh, MI 49286 Equipment Sold "AS IS, WHERE IS": All equipment/property is sold "AS IS, WHERE IS" with no warranty or guarantees, expressed or implied, No operational assessments have been made by DPA Auctions on this item, it has been photographed ONLY.



### #5 - Treater Inductors (DR8858)

Treater Inductors (DR8858), pallet lot of (3) poly seed treater inductors, electric agitators, electric pumps. Notes: Item Location: Pollock, SD 57648 Equipment Sold "AS IS, WHERE IS": All equipment/property is sold "AS IS, WHERE IS" with no warranty or guarantees, expressed or implied, No operational assessments have been made by DPA Auctions on this item, it has been photographed ONLY.



### #6 - Fuel Transfer (DR8850)

Fuel Transfer (DR8850), 100 gallon portable fuel tank, 12 volt filtered pump. Notes: Item Location: Faulkton, SD 57438 Equipment Sold "AS IS, WHERE IS": All equipment/property is sold "AS IS, WHERE IS" with no warranty or guarantees, expressed or implied, No operational assessments have been made by DPA Auctions on this item, it has been photographed ONLY.



### #7 - Fuel Transfer (DR8851)

Fuel Transfer (DR8851), 100 gallon portable fuel tank, 12 volt pump. Notes: Item Location: Faulkton, SD 57438 Equipment Sold "AS IS, WHERE IS": All equipment/property is sold "AS IS, WHERE IS" with no warranty or guarantees, expressed or implied, No operational assessments have been made by DPA Auctions on this item, it has been photographed ONLY.



---

### #8 - Fuel Transfer (DR8852)

Fuel Transfer (DR8852), 100 gallon portable fuel tank, 12 volt filtered pump. Notes: Item Location: Faulkton, SD 57438 Equipment Sold "AS IS, WHERE IS": All equipment/property is sold "AS IS, WHERE IS" with no warranty or guarantees, expressed or implied, No operational assessments have been made by DPA Auctions on this item, it has been photographed ONLY.



---

### #9 - 2018 Easy Man Bale Spear (AL365)

2018 Easy Man Bale Spear (AL365), skid loader universal attach skid steer mount, unused. Notes: Item Location: Pender, NE 68047 Equipment Sold "AS IS, WHERE IS": All equipment/property is sold "AS IS, WHERE IS" with no warranty or guarantees, expressed or implied, No operational assessments have been made by DPA Auctions on this item, it has been photographed ONLY.



---

### #10 - Aluminum Truck Grill Guard (MH276)

Aluminum Truck Grill Guard (MH276), aluminum grill guard for semi truck, seller believes it came off a Peterbilt. Notes: No brackets, grill guard only. Item Location: Burr Oak, KS 66936 Equipment Sold "AS IS, WHERE IS": All equipment/property is sold "AS IS, WHERE IS" with no warranty or guarantees, expressed or implied, No operational assessments have been made by DPA Auctions on this item, it has been photographed ONLY.



---

### #11 - Belt Conveyor (PZ9215)

Belt Conveyor (PZ9215), Belt conveyor, drive, tail pulleys, Baldor 5 hp electric motor, 24 to 1 gear reducer, approx. 200' smooth belt. Notes: Item Location: Audubon, IA 50025 Equipment Sold "AS IS, WHERE IS": All equipment/property is sold "AS IS, WHERE IS" with no warranty or guarantees, expressed or implied, No operational assessments have been made by DPA Auctions on this item, it has been photographed ONLY.



---

### #12 - Dickey John Monitor (PZ9214)

Dickey John Monitor (PZ9214), Dickey John DJCCS 100 and DJCMS 100 monitors, full wiring harness. Notes: Item Location: Audubon, IA 50025 Equipment Sold "AS IS, WHERE IS": All equipment/property is sold "AS IS, WHERE IS" with no warranty or guarantees, expressed or implied, No operational assessments have been made by DPA Auctions on this item, it has been photographed ONLY.



---

### #13 - Nh3 Nurse Tank (DR8823 Unit 648)

Nh3 Nurse Tank (DR8823 Unit 648), 1000 gallon top front fill Nh3 tank, data tag, Pryor style running gear, rear hitch, 12.5-15 tires. Notes: Item Location: Bristol, SD 57219 Equipment Sold "AS IS, WHERE IS": All equipment/property is sold "AS IS, WHERE IS" with no warranty or guarantees, expressed or implied, No operational assessments have been made by DPA Auctions on this item, it has been photographed ONLY.



---

### #14 - Nh3 Nurse Tank (DR8824 Unit 268)

Nh3 Nurse Tank (DR8824 Unit 268), 1000 gallon top front fill Nh3 tank, data tag, Pryor style running gear, rear hitch, 12.5-15 tires. Notes: Item Location: Bristol, SD 57219 Equipment Sold "AS IS, WHERE IS": All equipment/property is sold "AS IS, WHERE IS" with no warranty or guarantees, expressed or implied, No operational assessments have been made by DPA Auctions on this item, it has been photographed ONLY.



---

### #15 - Nh3 Nurse Tank (DR8825 Unit 635)

Nh3 Nurse Tank (DR8825 Unit 635), 1000 gallon top front fill Nh3 tank, data tag, Pryor style running gear, rear hitch, 12.5-15 tires. Notes: Item Location: Bristol, SD 57219 Equipment Sold "AS IS, WHERE IS": All equipment/property is sold "AS IS, WHERE IS" with no warranty or guarantees, expressed or implied, No operational assessments have been made by DPA Auctions on this item, it has been photographed ONLY.



---

### #16 - Nh3 Nurse Tank (DR8826 Unit 376)

Nh3 Nurse Tank (DR8826 Unit 376), 1000 gallon top front fill Nh3 tank, data tag, Pryor style running gear, rear hitch, 12.5-15 tires. Notes: Item Location: Bristol, SD 57219 Equipment Sold "AS IS, WHERE IS": All equipment/property is sold "AS IS, WHERE IS" with no warranty or guarantees, expressed or implied, No operational assessments have been made by DPA Auctions on this item, it has been photographed ONLY.



---

### #17 - Nh3 Nurse Tank (DR8827 Unit 448)

Nh3 Nurse Tank (DR8827 Unit 448), 1000 gallon top front fill Nh3 tank, data tag, Pryor style running gear, rear hitch, 12.5-15 tires. Notes: Item Location: Bristol, SD 57219 Equipment Sold "AS IS, WHERE IS": All equipment/property is sold "AS IS, WHERE IS" with no warranty or guarantees, expressed or implied, No operational assessments have been made by DPA Auctions on this item, it has been photographed ONLY.



---

### #18 - Nh3 Nurse Tank (DR8828 Unit 350)

Nh3 Nurse Tank (DR8828 Unit 350), 1000 gallon top front fill Nh3 tank, data tag, Pryor style running gear, rear hitch, 12.5-15 tires. Notes: One rear tire is FLAT. Item Location: Bristol, SD 57219 Equipment Sold "AS IS, WHERE IS": All equipment/property is sold "AS IS, WHERE IS" with no warranty or guarantees, expressed or implied, No operational assessments have been made by DPA Auctions on this item, it has been photographed ONLY.



---

### #19 - Nh3 Nurse Tank (DR8829 Unit 838)

Nh3 Nurse Tank (DR8829 Unit 838), 1000 gallon top front fill Nh3 tank, data tag, Ag Systems 5th wheel style running gear, adjustable axles, rear hitch, 12.5-15 tires. Notes: Item Location: Bristol, SD 57219 Equipment Sold "AS IS, WHERE IS": All equipment/property is sold "AS IS, WHERE IS" with no warranty or guarantees, expressed or implied, No operational assessments have been made by DPA Auctions on this item, it has been photographed ONLY.



---

### #20 - Nh3 Nurse Tank (DR8830 Unit 835)

Nh3 Nurse Tank (DR8830 Unit 835), 1000 gallon top front fill Nh3 tank, data tag, Ag Systems 5th wheel style running gear, adjustable axles, rear hitch, 12.5-15 tires. Notes: Item Location: Bristol, SD 57219 Equipment Sold "AS IS, WHERE IS": All equipment/property is sold "AS IS, WHERE IS" with no warranty or guarantees, expressed or implied, No operational assessments have been made by DPA Auctions on this item, it has been photographed ONLY.



---

### #21 - Convey-all Conveyor (DR8820)

Convey-all Conveyor (DR8820), portable tube conveyor, 36' X 10", 5 hp 3 phase top drive electric motor. Notes: Item Location: Bristol, SD 57219 Equipment Sold "AS IS, WHERE IS": All equipment/property is sold "AS IS, WHERE IS" with no warranty or guarantees, expressed or implied, No operational assessments have been made by DPA Auctions on this item, it has been photographed ONLY.



---

### #22 - Convey-All Conveyor (DR8821)

Convey-All Conveyor (DR8821), (2) 20' stationary conveyors, 14" wide, 10 hp 3 phase electric drive motor, 1 section has NO BELT. Notes: Item Location: Bristol, SD 57219 Equipment Sold "AS IS, WHERE IS": All equipment/property is sold "AS IS, WHERE IS" with no warranty or guarantees, expressed or implied, No operational assessments have been made by DPA Auctions on this item, it has been photographed ONLY.



---

### #23 - Convey-All Conveyor (DR8822)

Convey-All Conveyor (DR8822), (2) 20' stationary conveyors, 14" wide, 5 hp 3 phase electric drive motor, 1 section has NO BELT. Notes: Item Location: Bristol, SD 57219 Equipment Sold "AS IS, WHERE IS": All equipment/property is sold "AS IS, WHERE IS" with no warranty or guarantees, expressed or implied, No operational assessments have been made by DPA Auctions on this item, it has been photographed ONLY.



---

### #24 - Nh3 Nurse Tank (DR8846)

Nh3 Nurse Tank (DR8846), 1000 gallon top front fill Nh3 tank, data tag, Ag Systems 5th wheel style running gear, rear hitch, 12.5-15 tires. Notes: Item Location: Mellette, SD 57461 Equipment Sold "AS IS, WHERE IS": All equipment/property is sold "AS IS, WHERE IS" with no warranty or guarantees, expressed or implied, No operational assessments have been made by DPA Auctions on this item, it has been photographed ONLY.



---

### #25 - Horsch Anderson Strip Till (DR8844 Unit 7091)

Horsch Anderson Strip Till (DR8844 Unit 7091), model 60-15 strip till bar, front rippe coulters, double disc sealers, SN PS0014, Horsch Anderson 500 bushel commodity cart, triple compartment, top catwalk, 20.8-42 dual row crop tires, cart SN CC5000926. Notes: Item Location: Mellette, SD 57461 Equipment Sold "AS IS, WHERE IS": All equipment/property is sold "AS IS, WHERE IS" with no warranty or guarantees, expressed or implied, No operational assessments have been made by DPA Auctions on this item, it has been photographed ONLY.



### #26 - 2000 Kenworth T800 (DR8832 Unit 5424)

2000 Kenworth T800 (DR8832 Unit 5424), Cat C-15 diesel engine, 10 speed transmission, engine brake, tandem axle full screw, air ride suspension, hydraulic wet kit, stainless steel quarter fenders, air dump valve, cruise control, 24.5 tires, shows 740,032 miles, (will be a few more as truck is still being used). Notes: Current DOT, truck is still in service. All service records are available. Item Location: Yale, SD 57386 Equipment Sold "AS IS, WHERE IS": All equipment/property is sold "AS IS, WHERE IS" with no warranty or guarantees, expressed or implied, No operational assessments have been made by DPA Auctions on this item, it has been photographed ONLY.



### #27 - 1996 Freightliner FL70 (DR8845 Unit 6515)

1996 Freightliner FL70 (DR8845 Unit 6515), Cummins diesel engine, 5 speed rear end, single axle, air brakes, 9' steel flatbed, rear ag bumper, 5th wheel ball, headache rack, 22.5 tires. Notes: Good running truck. Item Location: Mellette, SD 57461 Equipment Sold "AS IS, WHERE IS": All equipment/property is sold "AS IS, WHERE IS" with no warranty or guarantees, expressed or implied, No operational assessments have been made by DPA Auctions on this item, it has been photographed ONLY.



### #28 - 1992 Volvo (DR8847 Unit 3261)

1992 Volvo (DR8847 Unit 3261), tandem axle full screw, 9 speed transmission, day cab, dual aluminum fuel tanks, air lift steerable tag axle, 20' of frame rail behind the cab, engine brake, 22.5 tires. Notes: Truck was drove back to the shop but has gremlins in the electrical system. May run and just stop completely. Item Location: Mellette, SD 57461 Equipment Sold "AS IS, WHERE IS": All equipment/property is sold "AS IS, WHERE IS" with no warranty or guarantees, expressed or implied, No operational assessments have been made by DPA Auctions on this item, it has been photographed ONLY.



### #29 - Fargo Aire 2800 (DR8788)

Fargo Aire 2800 (DR8788), 40/60 split bin stainless steel commodity cart, steerable 4 wheel gear, 18.4-26 tires, top cat walk, adjustable rear spread axle. Notes: Item Location: Langford, SD 57454 Equipment Sold "AS IS, WHERE IS": All equipment/property is sold "AS IS, WHERE IS" with no warranty or guarantees, expressed or implied, No operational assessments have been made by DPA Auctions on this item, it has been photographed ONLY.



### #30 - Fargo Aire 2800 (DR8789)

Fargo Aire 2800 (DR8789), 40/60 split bin stainless steel commodity cart, steerable 4 wheel gear, 23.1-26 tires, top cat walk, adjustable rear spread axle. Notes: Item Location: Langford, SD 57454 Equipment Sold "AS IS, WHERE IS": All equipment/property is sold "AS IS, WHERE IS" with no warranty or guarantees, expressed or implied, No operational assessments have been made by DPA Auctions on this item, it has been photographed ONLY.



### #30A - 2008 GMC Sierra Denali (TR5004)

2008 GMC Sierra Denali (TR5004), Denali package, 4x4, gas engine, leather interior, automatic transmission, AM/FM CD player, 4 door, bed cover, dual temperature, heated seats, steering wheel controls, 139,540 miles. Notes: Service air bag light is on, windshield has a crack. Item Location: Fremont, NE 68025 Equipment Sold "AS IS, WHERE IS": All equipment/property is sold "AS IS, WHERE IS" with no warranty or guarantees, expressed or implied, No operational assessments have been made by DPA Auctions on this item, it has been photographed ONLY.



### #32 - Tyler Tender Box (DR7523)

Tyler Tender Box (DR7523), 16 ton stainless steel hydraulic dry fertilizer tender box, side shooter auger, manual tarp. Notes: Item Location: Stevens Point, WI 54482 Equipment Sold "AS IS, WHERE IS": All equipment/property is sold "AS IS, WHERE IS" with no warranty or guarantees, expressed or implied, No operational assessments have been made by DPA Auctions on this item, it has been photographed ONLY.



### #33 - Cat V30D (DR8835 Unit 1552)

Cat V30D (DR8835 Unit 1552), LP gas engine, shuttle shift, OROPS, 3000 lbs dual mast forklift, hydraulic side shift, pneumatic tires, 18X7-8 tires. Notes: Item Location: Wessington Springs, SD 57382 Equipment Sold "AS IS, WHERE IS": All equipment/property is sold "AS IS, WHERE IS" with no warranty or guarantees, expressed or implied, No operational assessments have been made by DPA Auctions on this item, it has been photographed ONLY.



### #34 - Westfield MK 130-71 Auger (DR8836 Unit 1552)

Westfield MK 130-71 Auger (DR8836 Unit 1552), 13" x71' portable grain auger, dual auger swing hopper, 540 PTO drive, hydraulic up/down. Notes: Item Location: Wessington Springs, SD 57382 Equipment Sold "AS IS, WHERE IS": All equipment/property is sold "AS IS, WHERE IS" with no warranty or guarantees, expressed or implied, No operational assessments have been made by DPA Auctions on this item, it has been photographed ONLY.





### #35 - 2012 Waco Strip Till (DR8834 Unit 8428)

2012 Waco Strip Till (DR8834 Unit 8428), Big Country BCW190 model, 40' 16 row, front trash whips, front and rear ripple coulters, double disc closers, walking tandem main frame axles, hydraulic wings and gauge wheels. Notes: Full \$40,000 updated 2017. Item Location: Woonsocket, SD 57385 Equipment Sold "AS IS, WHERE IS": All equipment/property is sold "AS IS, WHERE IS" with no warranty or guarantees, expressed or implied, No operational assessments have been made by DPA Auctions on this item, it has been photographed ONLY.



### #36 - 1986 Ford F250 (DR8833 Unit 5272)

1986 Ford F250 (DR8833 Unit 5272), gas engine, 4 speed transmission, 4X4, front snow plow, electric controls, rear ag bumper, AM/FM radio, air conditioning, 235/85R16 tires, shows 55,124 miles. Notes: Item Location: Woonsocket, SD 57385 Equipment Sold "AS IS, WHERE IS": All equipment/property is sold "AS IS, WHERE IS" with no warranty or guarantees, expressed or implied, No operational assessments have been made by DPA Auctions on this item, it has been photographed ONLY.



### #37 - Magik Screener (DR8787)

Magik Screener (DR8787), 2 section grain screener, with 2 sets of screens does 40K BPH, extra screens are (42) corn screens .218 7/32 size, (82) soybean screens .156 5/32 size, (42) wheat .096 3/32 size, (39) corn borer screens .5 1/2 size. Notes: Was in working order when replaced. Item Location: Andover, SD 57422 Equipment Sold "AS IS, WHERE IS": All equipment/property is sold "AS IS, WHERE IS" with no warranty or guarantees, expressed or implied, No operational assessments have been made by DPA Auctions on this item, it has been photographed ONLY.



### #38 - Convey-all 120' Conveyor (DR8838 Unit 7201)

Convey-all 120' Conveyor (DR8838 Unit 7201), model TCH14120, 120' X 14" portable grain conveyor, cleated belt, 540 PTO drive, heavy duty transport gear, hydraulic up/down, canvas hopper, SN 1808045407, includes Convey-all variable speed swing hopper. Notes: Auger is in good condition. Item Location: Saint Lawrence, SD 57373 Equipment Sold "AS IS, WHERE IS": All equipment/property is sold "AS IS, WHERE IS" with no warranty or guarantees, expressed or implied, No operational assessments have been made by DPA Auctions on this item, it has been photographed ONLY.



### #39 - Hutchinson Pile Loader (DR8839 Unit 7219)

Hutchinson Pile Loader (DR8839 Unit 7219), approximately 35' 3 point mount pile conveyor, hydraulic drive, hydraulic end slinger. Notes: Item Location: Saint Lawrence, SD 57373 Equipment Sold "AS IS, WHERE IS": All equipment/property is sold "AS IS, WHERE IS" with no warranty or guarantees, expressed or implied, No operational assessments have been made by DPA Auctions on this item, it has been photographed ONLY.



### #40 - Feterl Auger (DR8837 Unit 4860)

Feterl Auger (DR8837 Unit 4860), 12" x100' portable grain auger, variable speed dual auger swing hopper, 540 PTO drive, hydraulic up/down. Notes: Item Location: Wessington Springs, SD 57382 Equipment Sold "AS IS, WHERE IS": All equipment/property is sold "AS IS, WHERE IS" with no warranty or guarantees, expressed or implied, No operational assessments have been made by DPA Auctions on this item, it has been photographed ONLY.



### #40A - 2002 Ford Explorer (TR5001)

2002 Ford Explorer (TR5001), Limited package, automatic transmission, V8 engine, 3rd row seating, leather interior, power seats, heated seats, power windows, power locks, AM/FM 6 disc CD player, 143,182 miles. Notes: Engine makes sounds when idling, minor rust. Item Location: Fremont, NE 68025 Equipment Sold "AS IS, WHERE IS": All equipment/property is sold "AS IS, WHERE IS" with no warranty or guarantees, expressed or implied, No operational assessments have been made by DPA Auctions on this item, it has been photographed ONLY.



### #41 - Westfield MK130-11 Auger (DR8840 Unit 7486)

Westfield MK130-11 Auger (DR8840 Unit 7486), 13" x111' portable grain auger, variable speed dual auger swing hopper, 540 PTO drive, hydraulic up/down. Notes: Item Location: Saint Lawrence, SD 57373 Equipment Sold "AS IS, WHERE IS": All equipment/property is sold "AS IS, WHERE IS" with no warranty or guarantees, expressed or implied, No operational assessments have been made by DPA Auctions on this item, it has been photographed ONLY.



### #42 - MFS Bulk Bin (DR8854)

MFS Bulk Bin (DR8854), 1000 bushel cone bottom steel bulk tank, 12' diameter, access ladder. Notes: Item Location: Pollock, SD 57648 Equipment Sold "AS IS, WHERE IS": All equipment/property is sold "AS IS, WHERE IS" with no warranty or guarantees, expressed or implied, No operational assessments have been made by DPA Auctions on this item, it has been photographed ONLY.



### #43 - MFS Bulk Bin (DR8855)

MFS Bulk Bin (DR8855), 1000 bushel cone bottom steel bulk tank, 12' diameter, access ladder. Notes: Item Location: Pollock, SD 57648 Equipment Sold "AS IS, WHERE IS": All equipment/property is sold "AS IS, WHERE IS" with no warranty or guarantees, expressed or implied, No operational assessments have been made by DPA Auctions on this item, it has been photographed ONLY.



### #44 - Clipper Grain Cleaner (DR8857)

Clipper Grain Cleaner (DR8857), model Super 228D, electric drive motors, extra screens. Notes: Item Location: Pollock, SD 57648 Equipment Sold "AS IS, WHERE IS": All equipment/property is sold "AS IS, WHERE IS" with no warranty or guarantees, expressed or implied, No operational assessments have been made by DPA Auctions on this item, it has been photographed ONLY.



### #45 - John Deere 4050 Tractor (DR8841 Unit 7223)

John Deere 4050 Tractor (DR8841 Unit 7223), diesel engine, quad range transmission, Farmhand XL1140 hydraulic front loader, quick tach bucket, 540/1000 PTO, 3 remote hydraulic outlets, 3 point rear hitch, cab heat/air conditioning, 11L-15 front tires, 18.4-38 rear tires, axle weights, shows 5403 hours. Notes: Item Location: Saint Lawrence, SD 57373 Equipment Sold "AS IS, WHERE IS": All equipment/property is sold "AS IS, WHERE IS" with no warranty or guarantees, expressed or implied, No operational assessments have been made by DPA Auctions on this item, it has been photographed ONLY.



### #46 - Weigh Buggy (DR8860)

Weigh Buggy (DR8860), model 41-3132-S40 rubber caster weigh buggy, beam scale 1100 lb capacity. Notes: Item Location: Pollock, SD 57648 Equipment Sold "AS IS, WHERE IS": All equipment/property is sold "AS IS, WHERE IS" with no warranty or guarantees, expressed or implied, No operational assessments have been made by DPA Auctions on this item, it has been photographed ONLY.



### #47 - Batco 1545 Conveyor (DR8861)

Batco 1545 Conveyor (DR8861), portable belt conveyor, hydraulic drive transport gear w/hand controls, Kohler gas engine w/electric start, cleated belt, canvas hopper. Notes: Item Location: Pollock, SD 57648 Equipment Sold "AS IS, WHERE IS": All equipment/property is sold "AS IS, WHERE IS" with no warranty or guarantees, expressed or implied, No operational assessments have been made by DPA Auctions on this item, it has been photographed ONLY.



### #48 - Feterl Auger (DR8842 Unit 7450)

Feterl Auger (DR8842 Unit 7450), 12" x100' portable grain auger, variable speed dual auger swing hopper, 540 PTO drive, hydraulic up/down. Notes: Item Location: Saint Lawrence, SD 57373 Equipment Sold "AS IS, WHERE IS": All equipment/property is sold "AS IS, WHERE IS" with no warranty or guarantees, expressed or implied, No operational assessments have been made by DPA Auctions on this item, it has been photographed ONLY.



### #49 - 2006 Brock Master (DR8848)

2006 Brock Master (DR8848), 16" power drive bin sweep, for 105' diameter bin, 2 drive heads, 40hp electric motor. Notes: Item Location: Northville, SD 57465 Equipment Sold "AS IS, WHERE IS": All equipment/property is sold "AS IS, WHERE IS" with no warranty or guarantees, expressed or implied, No operational assessments have been made by DPA Auctions on this item, it has been photographed ONLY.



### #50 - 2012 John Deere 2510S Strip Till (DR8870 Unit 8435)

2012 John Deere 2510S Strip Till (DR8870 Unit 8435), model Residue Master 16 row strip till bar, notched front coulters, ripple closers, walking tandem main frame axles, wealking tandem hydraulic gauge wheels, bar SN 1A82510STD0750136, John Deere 1910 3 bin commodity cart, front swivel axles, rear view camera, 30.5-32 tires, cart SN A01910H731216. Notes: Item Location: Chamberlain, SD 57325 Equipment Sold "AS IS, WHERE IS": All equipment/property is sold "AS IS, WHERE IS" with no warranty or guarantees, expressed or implied, No operational assessments have been made by DPA Auctions on this item, it has been photographed ONLY.



### #50A - 2005 GMC Sierra 1500 (TR5003)

2005 GMC Sierra 1500 (TR5003), 4 DOOR, Z71, automatic transmission, gas engine, 4x4, running boards, AM/FM CD player, bed mat, heat/AC, leather interior, power windows/locks, heated seats, 129,553 miles. Notes: Item Location: Fremont, NE 68025 Equipment Sold "AS IS, WHERE IS": All equipment/property is sold "AS IS, WHERE IS" with no warranty or guarantees, expressed or implied, No operational assessments have been made by DPA Auctions on this item, it has been photographed ONLY.



**#51 - 2008 Chevy (DR8871 Unit 6421)**

2008 Chevy (DR8871 Unit 6421), NON RUNNER WRECKED, 5.3 liter gas engine, automatic transmission, extended cab, 4X4, chrome nerf bars, has 206,000 miles. Notes: Parts seen missing ARE MISSING and not included. Item Location: Chamberlain, SD 57325 Equipment Sold "AS IS, WHERE IS": All equipment/property is sold "AS IS, WHERE IS" with no warranty or guarantees, expressed or implied, No operational assessments have been made by DPA Auctions on this item, it has been photographed ONLY.

**#52 - 1977 Ford F750 (DR8843 Unit 3418)**

1977 Ford F750 (DR8843 Unit 3418), gas engine, 5 speed transmission, 2 speed rear end, single axle w/tag, good 17' steel grain box and hoist, roll over tarp is SHOT, triple swing tail gate w/grain gate, AM radio, 10.00-20 tires, shows 62,598 miles. Notes: DOT is NOT current, brakes are WEAK. Cracked windshield, GOOD box & hoist. Item Location: Redfield, SD 57469 Equipment Sold "AS IS, WHERE IS": All equipment/property is sold "AS IS, WHERE IS" with no warranty or guarantees, expressed or implied, No operational assessments have been made by DPA Auctions on this item, it has been photographed ONLY.

**#53 - Westfield MK130-114 Auger (DR8853)**

Westfield MK130-114 Auger (DR8853), 13" x114' portable grain auger, variable speed dual auger swing hopper, hydraulic power drive swing, 540 PTO drive, hydraulic up/down, adjustable axle transport gear. Notes: Item Location: Onaka, SD 57466 Equipment Sold "AS IS, WHERE IS": All equipment/property is sold "AS IS, WHERE IS" with no warranty or guarantees, expressed or implied, No operational assessments have been made by DPA Auctions on this item, it has been photographed ONLY.

**#54 - Generac 15 KW Propane Generator (PZ9157)**

Generac 15 KW Propane Generator (PZ9157), Generac model 00995-0 commercial grade propane generator, 1800 RPM, Mitsubishi engine, block heater, liquid cooled, built in 100 Amp automatic transfer switch, 120/240V, 62.5 amps at 240V, weather proof enclosure, shows 546 hours. Notes: Used as a back-up generator for a telecommunications company. Regularly serviced and maintained. Have forklift to load. Item Location: Springfield, IL 62703 Equipment Sold "AS IS, WHERE IS": All equipment/property is sold "AS IS, WHERE IS" with no warranty or guarantees, expressed or implied, No operational assessments have been made by DPA Auctions on this item, it has been photographed ONLY.

**#55 - Generac 15 KW Propane Generator (PZ9158)**

Generac 15 KW Propane Generator (PZ9158), Generac model 00995-0 commercial grade propane generator, 1800 RPM, Mitsubishi engine, block heater, liquid cooled, built in 100 Amp automatic transfer switch, 120/240V, 62.5 amps at 240V, weather proof enclosure, shows 415 hours. Notes: Used as a back-up generator for a telecommunications company. Regularly serviced and maintained. Have forklift to load. Item Location: Springfield, IL 62703 Equipment Sold "AS IS, WHERE IS": All equipment/property is sold "AS IS, WHERE IS" with no warranty or guarantees, expressed or implied, No operational assessments have been made by DPA Auctions on this item, it has been photographed ONLY.

**#56 - 2005 IHC 9900I Truck (PZ9164)**

2005 IHC 9900I Truck (PZ9164), ISX Cummins 485 diesel engine, Eaton 18 speed transmission, air conditioning, heat, cruise control, engine brake, sleeper, tandem axle, full screw, 5th wheel, shows approx. 1,200,000 miles. Notes: Item Location: Joliet, IL 60433 Equipment Sold "AS IS, WHERE IS": All equipment/property is sold "AS IS, WHERE IS" with no warranty or guarantees, expressed or implied, No operational assessments have been made by DPA Auctions on this item, it has been photographed ONLY.

**#57 - 2002 Sterling (DR8624)**

2002 Sterling (DR8624), Cat diesel engine, 9 speed transmission, day cab, tandem axle full screw, air ride suspension, 19' of frame rail behind the cab, AM/FM radio, cruise control, air conditioning, 22.5 tires, shows 891,815 miles. Notes: Item Location: Selmer, TN 38375 Equipment Sold "AS IS, WHERE IS": All equipment/property is sold "AS IS, WHERE IS" with no warranty or guarantees, expressed or implied, No operational assessments have been made by DPA Auctions on this item, it has been photographed ONLY.

**#58 - 2002 Loral 4000 Easy Rider Dry Floater (DR8879)**

2002 Loral 4000 Easy Rider Floater (DR8879), X-cab, Cummins diesel engine, automatic transmission, heat, air conditioning, Am/Fm cassette radio, Air-Max 1000 dry air flow box, 70' stainless steel boom, electric roll over tarp, 1000/50R25 rear tires, 48x 25.00-20 front tires, Raven controller, On Board Smart Steer, shows 42,005 miles, shows 3,757 hours. Notes: This is part of the complete dispersal of The Riley Company Inc. There is an issue with the apron chain drive. Item Location: Irene, SD 57037 Equipment Sold "AS IS, WHERE IS": All equipment/property is sold "AS IS, WHERE IS" with no warranty or guarantees, expressed or implied, No operational assessments have been made by DPA Auctions on this item, it has been photographed ONLY.



---

### #59 - Westfield MK130-114 Auger (DR8862 Unit FS42)

Westfield MK130-114 Auger (DR8862 Unit FS42), 13" x114' portable grain auger, variable speed dual auger swing hopper, hydraulic power drive swing, 540 PTO drive, hydraulic up/down, adjustable axle transport gear. Notes: Yellow spout on end DOES NOT SELL. Item Location: Pollock, SD 57648 Equipment Sold "AS IS, WHERE IS": All equipment/property is sold "AS IS, WHERE IS" with no warranty or guarantees, expressed or implied, No operational assessments have been made by DPA Auctions on this item, it has been photographed ONLY.



---

### #60 - Westfield MK130-114 Auger (DR8863 Unit FS27)

Westfield MK130-114 Auger (DR8863 Unit FS27), 13" x114' portable grain auger, variable speed dual auger swing hopper, hydraulic power drive swing, 540 PTO drive, hydraulic up/down, adjustable axle transport gear. Notes: There are a couple small tube holes, see pictures. Item Location: Pollock, SD 57648 Equipment Sold "AS IS, WHERE IS": All equipment/property is sold "AS IS, WHERE IS" with no warranty or guarantees, expressed or implied, No operational assessments have been made by DPA Auctions on this item, it has been photographed ONLY.



---

### #60A - 2003 Dodge Grand Caravan (TR5002)

2003 Dodge Grand Caravan (TR5002), V6 gas engine, automatic transmission, cloth interior, power windows, locks, heat/ac, AM/FM CD player, 136,472 miles. Notes: Hail damage, check engine light is on. Item Location: Fremont, NE 68025 Equipment Sold "AS IS, WHERE IS": All equipment/property is sold "AS IS, WHERE IS" with no warranty or guarantees, expressed or implied, No operational assessments have been made by DPA Auctions on this item, it has been photographed ONLY.



---

### #61 - Bush Hog Mower (DR8878)

Bush Hog Mower (DR8878), 72" gyro mower, 3 point hitch. Notes: This is part of the complete dispersal of The Riley Company Inc. Item Location: Irene, SD 57037 Equipment Sold "AS IS, WHERE IS": All equipment/property is sold "AS IS, WHERE IS" with no warranty or guarantees, expressed or implied, No operational assessments have been made by DPA Auctions on this item, it has been photographed ONLY.



---

### #62 - Case W20C Loader (DR8875)

Case W20C Loader (DR8875), diesel engine, shuttle shift transmission, 4-in-1 hydraulic front bucket, air brakes, cab heat, 17.5-25 tires, shows 4,755 hours. Notes: This is part of the complete dispersal of The Riley Company Inc. Item Location: Irene, SD 57037 Equipment Sold "AS IS, WHERE IS": All equipment/property is sold "AS IS, WHERE IS" with no warranty or guarantees, expressed or implied, No operational assessments have been made by DPA Auctions on this item, it has been photographed ONLY.



---

### #63 - John Deere 2010 Tractor (DR8877)

John Deere 2010 Tractor (DR8877), gas engine, quad range shift, wide front, remote hydraulic outlets, front rock box, 540 PTO, 3 point hitch, shows 4450 hours. Notes: This is part of the complete dispersal of The Riley Company Inc. Item Location: Irene, SD 57037 Equipment Sold "AS IS, WHERE IS": All equipment/property is sold "AS IS, WHERE IS" with no warranty or guarantees, expressed or implied, No operational assessments have been made by DPA Auctions on this item, it has been photographed ONLY.



---

### #64 - 1990 Ford L8000 Dump Truck (DR8882)

1990 Ford L8000 Dump Truck (DR8882), Ford diesel engine, 8 speed lo/lo transmission, air conditioning, tandem axle full screw, air lift tag axle, Hendrickson suspension, 15' steel dump box & hoist, trash tarp, shows 158,706 miles. Notes: This is part of the complete dispersal of The Riley Company Inc. Item Location: Irene, SD 57037 Equipment Sold "AS IS, WHERE IS": All equipment/property is sold "AS IS, WHERE IS" with no warranty or guarantees, expressed or implied, No operational assessments have been made by DPA Auctions on this item, it has been photographed ONLY.



---

### #65 - 2014 John Deere 4940 Dry Spreader (PZ9212)

2014 John Deere 4940 Dry Spreader (PZ9212), John Deere diesel engine, hydrostatic transmission, air conditioning, heat, Am/Fm CD stereo, New Leader L3220 G4 single bin stainless steel dry spreader box, MultiApplier Ready, twin spinner, all hydraulic, hydraulic tread adjustment, traction control, halogen lights, Firestone IF380/105R50 tires, row crop fenders, shows 2736 hours. Notes: MultiApplier Insert, 620/70R46 Flotation Tires & AMS are available to purchase separate from this auction. Price will be determined between buyer and seller, not DPA Auctions. Item Location: Maryville, MO 64468 Equipment Sold "AS IS, WHERE IS": All equipment/property is sold "AS IS, WHERE IS" with no warranty or guarantees, expressed or implied, No operational assessments have been made by DPA Auctions on this item, it has been photographed ONLY.





### #66 - 1998 Freightliner FLD120 Grain Truck (DR8876)

1998 Freightliner FLD120 Grain Truck (DR8876), Detroit diesel engine, 10 speed transmission, heat, air conditioning, Am/Fm cassette radio, tandem axle full screw, air ride suspension, air dump valve, 20' Dakota aluminum grain box, rear tri door w/ grain gate, roll over tarp, dual aluminum fuel tanks, 285/75R24.5 tires, shows 123,999 miles. Notes: Item Location: Irene, SD 57037 Equipment Sold "AS IS, WHERE IS": All equipment/property is sold "AS IS, WHERE IS" with no warranty or guarantees, expressed or implied, No operational assessments have been made by DPA Auctions on this item, it has been photographed ONLY.



### #67 - 2004 Loral 6400 Easy Rider Dry Floater (DR8880)

2004 Loral 6400 Easy Rider Floater (DR8880), Cat diesel engine, automatic transmission w/ 2 speed drop box, heat, air conditioning, Am/Fm radio, power windows & locks, cruise control, Air-Max 1000 dry air flow box, 70' stainless steel boom, foam marker, stainless steel foam tank, electric roll over tarp, 1000/50R25 rear tires, 48x 25.00-20 front tires, Raven SCS 4000 controller, swathing light bar. Notes: This is part of the complete dispersal of The Riley Company Inc. Left side boom was damaged last fall and not replaced. This machine was purchased NEW. Item Location: Irene, SD 57037 Equipment Sold "AS IS, WHERE IS": All equipment/property is sold "AS IS, WHERE IS" with no warranty or guarantees, expressed or implied, No operational assessments have been made by DPA Auctions on this item, it has been photographed ONLY.



### #68 - International 1086 (DR8856 Unit 10821)

International 1086 (DR8856 Unit 10821), diesel engine, hi/lo 4 speed transmission, torque amplifier, cab heat/air conditioning, wide front, 3 remote hydraulic outlets, 540/1000 PTO, 18.4-38 rear tires, 10.00-16 front tires, shows 8476 hours. Notes: Item Location: Pollock, SD 57648 Equipment Sold "AS IS, WHERE IS": All equipment/property is sold "AS IS, WHERE IS" with no warranty or guarantees, expressed or implied, No operational assessments have been made by DPA Auctions on this item, it has been photographed ONLY.



### #69 - Westfield MK130-111 Auger (DR8864)

Westfield MK130-111 Auger (DR8864), 13" x111' portable grain auger, variable speed dual auger swing hopper, hydraulic power drive swing, 540 PTO drive, hydraulic up/down. Notes: Item Location: Kennebec, SD 57544 Equipment Sold "AS IS, WHERE IS": All equipment/property is sold "AS IS, WHERE IS" with no warranty or guarantees, expressed or implied, No operational assessments have been made by DPA Auctions on this item, it has been photographed ONLY.



### #70 - Brandt 13110HP Auger (DR8865)

Brandt 13110HP Auger (DR8865), portable grain auger 13" X 110', 540 PTO drive, hydraulic up/down, adjustable axle transport gear, variable speed dual auger swing hopper, hydraulic power drive swing. Notes: Item Location: Kennebec, SD 57544 Equipment Sold "AS IS, WHERE IS": All equipment/property is sold "AS IS, WHERE IS" with no warranty or guarantees, expressed or implied, No operational assessments have been made by DPA Auctions on this item, it has been photographed ONLY.



### #70A - 2008 GMC Acadia (TR5000)

2008 GMC Acadia (TR5000), AWD, 3.6 gas engine, SLT, P255/65R18 TIRES, leather interior, rear controls, 3rd row seating, DVD player, automatic transmission, heated seats, power seats, dual temperature control, AM/FM CD player, 91,861 miles. Notes: Item Location: Fremont, NE 68025 Equipment Sold "AS IS, WHERE IS": All equipment/property is sold "AS IS, WHERE IS" with no warranty or guarantees, expressed or implied, No operational assessments have been made by DPA Auctions on this item, it has been photographed ONLY.



### #71 - 2010 RoGator 1386 Sprayer (NJP1216 Unit 7565)

2010 RoGator 1386 Sprayer (NJP1216 Unit 7565), diesel engine, hydrostatic transmission, heat, air conditioning, Am/Fm CD radio, 1300 gallon stainless steel liquid system, 120' boom, 20" spacing, 5-way nozzle bodies, poly chemical inductor, 135 gallon saddle mount rinse tank, 380/90R46 row crop tires, Raven SCS 5000 controller, Trimble EZ-Boom, shows 2,985 hours. Notes: Item Location: Eldridge, ND 58401 Equipment Sold "AS IS, WHERE IS": All equipment/property is sold "AS IS, WHERE IS" with no warranty or guarantees, expressed or implied, No operational assessments have been made by DPA Auctions on this item, it has been photographed ONLY.



### #72 - 1999 Sun Dry Trailer (DR8910 Unit 6194)

1999 Sun Dry Trailer (DR8910 Unit 6194), 24 ton hydraulic stainless steel dry fertilizer tender trailer, rear auger, roll over tarp, tandem axle, self contained hydraulics, diesel power unit. Notes: Item Location: Marlin, TX 76661 Equipment Sold "AS IS, WHERE IS": All equipment/property is sold "AS IS, WHERE IS" with no warranty or guarantees, expressed or implied, No operational assessments have been made by DPA Auctions on this item, it has been photographed ONLY.



---

### #73 - 1999 Sun Dry Trailer (DR8911 Unit 6195)

1999 Sun Dry Trailer (DR8911 Unit 6195), 24 ton hydraulic stainless steel dry fertilizer tender trailer, rear auger, roll over tarp, tandem axle, self contained hydraulics, diesel power unit. Notes: Item Location: Marlin, TX 76661 Equipment Sold "AS IS, WHERE IS": All equipment/property is sold "AS IS, WHERE IS" with no warranty or guarantees, expressed or implied, No operational assessments have been made by DPA Auctions on this item, it has been photographed ONLY.



---

### #74 - Ag Chem Soil Election (DR8786)

Ag Chem Soil Election (DR8786), Soil Election four bin dry flowable box, 70' boom, electric roll tarp, TARP is SHOT. Notes: May need a little work but was working when removed from chassis w/3000 hours. Item Location: Aberdeen, SD 57401 Equipment Sold "AS IS, WHERE IS": All equipment/property is sold "AS IS, WHERE IS" with no warranty or guarantees, expressed or implied, No operational assessments have been made by DPA Auctions on this item, it has been photographed ONLY.



---

### #75 - Westfield MK130-111 Auger (DR8866)

Westfield MK130-111 Auger (DR8866), 13" x111' portable grain auger, variable speed dual auger swing hopper, hydraulic power drive swing, 540 PTO drive, hydraulic up/down. Notes: Item Location: Kennebec, SD 57544 Equipment Sold "AS IS, WHERE IS": All equipment/property is sold "AS IS, WHERE IS" with no warranty or guarantees, expressed or implied, No operational assessments have been made by DPA Auctions on this item, it has been photographed ONLY.



---

### #76 - Westfield MK130-91 Auger (DR8867)

Westfield MK130-91 Auger (DR8867), 13" x91' portable grain auger, dual auger swing hopper, 540 PTO drive, hydraulic up/down. Notes: This auger needs some work call Todd for more details. Item Location: Kennebec, SD 57544 Equipment Sold "AS IS, WHERE IS": All equipment/property is sold "AS IS, WHERE IS" with no warranty or guarantees, expressed or implied, No operational assessments have been made by DPA Auctions on this item, it has been photographed ONLY.



---

### #77 - 2002 Terra Gator 8104 Dry Floater (DR8883)

2002 Terra Gator 8104 Dry Floater (DR8883), diesel engine, Terra shift transmission, heat, air conditioning, Am/Fm CD radio, Air-Max 1000 dry air flow box, electric roll over tarp, foam markers, stainless steel foam tank, Raven SCS 661, Starlink swathing, shows 48x31.00-20 front tires, 66x43.00-25 rear tires, shows 1,184 hours, shows 9,987 miles. Notes: Hours are NOT actual, actual hours are not known. This is part of the complete dispersal of The Riley Company Inc. Item Location: Irene, SD 57037 Equipment Sold "AS IS, WHERE IS": All equipment/property is sold "AS IS, WHERE IS" with no warranty or guarantees, expressed or implied, No operational assessments have been made by DPA Auctions on this item, it has been photographed ONLY.



---

### #78 - 2014 John Deere 4830 Sprayer (PZ9207)

2014 John Deere 4830 Sprayer (PZ9207), John Deere diesel engine, hydrostatic transmission, air conditioning, heat, Am/Fm radio, 1000 gallon stainless steel liquid system, 100' boom, 5 way nozzle bodies, stainless steel chemical inductor, Mitas 380/90R46 tires @ 80%, John Deere 2630 monitor, shows 3085 hours. Notes: Item Location: Worthington, IN 47471 Equipment Sold "AS IS, WHERE IS": All equipment/property is sold "AS IS, WHERE IS" with no warranty or guarantees, expressed or implied, No operational assessments have been made by DPA Auctions on this item, it has been photographed ONLY.



---

### #79 - 2000 Ford F350 Flatbed Pickup (DR8874)

2000 Ford F350 4x4 Flatbed Pickup (DR8874), 7.3 liter diesel engine, automatic transmission, heat, air conditioning, Am/Fm radio, cruise control, 10' steel stake bed, 5th wheel ball, rear receiver hitch, frame mounted storage boxes, 235/85R16 tires, shows 113,281 miles. Notes: This is part of the complete dispersal of The Riley Company Inc. This truck has SALVAGE TITLE. Item Location: Irene, SD 57037 Equipment Sold "AS IS, WHERE IS": All equipment/property is sold "AS IS, WHERE IS" with no warranty or guarantees, expressed or implied, No operational assessments have been made by DPA Auctions on this item, it has been photographed ONLY.



---

### #80 - 2000 International Semi Float (DR8914 Unit 6912)

2000 International Semi Float (DR8914 Unit 6912), diesel engine, 6 speed transmission, 1200 gallon stainless steel liquid system, 50' boom, plumbed at 30" & 60" spacing, foam markers, stainless steel chemical inductor, air brakes, air conditioning, cruise control, AM/FM radio, 48X31.00-20 rear tires, 385/85R 22.5 front tires, odometer shows 41,583 miles. Notes: Item Location: Lyons, GA 30436 Equipment Sold "AS IS, WHERE IS": All equipment/property is sold "AS IS, WHERE IS" with no warranty or guarantees, expressed or implied, No operational assessments have been made by DPA Auctions on this item, it has been photographed ONLY.



**#81 - 2006 Magnolia (RMC257 Unit 10234)**

2006 Magnolia (RMC257 Unit 10234), Adams 26 ton stainless steel hydraulic dry fertilizer tender trailer, self contained hydraulics, diesel power unit, rear auger, electric vibrators, roll over tarp, tandem axle trailer, electric vibrators. Notes: Item Location: Rolling Fork, MS 39159 Equipment Sold "AS IS, WHERE IS": All equipment/property is sold "AS IS, WHERE IS" with no warranty or guarantees, expressed or implied, No operational assessments have been made by DPA Auctions on this item, it has been photographed ONLY.

**#82 - 2006 Magnolia (RMC258 Unit 10238)**

2006 Magnolia (RMC258 Unit 10238), KBH 26 ton stainless steel hydraulic dry fertilizer tender trailer, self contained hydraulics, diesel power unit, rear auger, electric vibrators, roll over tarp, tandem axle trailer, electric vibrators. Notes: Item Location: Rolling Fork, MS 39159 Equipment Sold "AS IS, WHERE IS": All equipment/property is sold "AS IS, WHERE IS" with no warranty or guarantees, expressed or implied, No operational assessments have been made by DPA Auctions on this item, it has been photographed ONLY.

**#83 - 2014 Ford F550 (DR8912 Unit 7038)**

2014 Ford F550 (DR8912 Unit 7038), gas engine, (engine has issues barely runs) automatic transmission, 10' steel stakebed, 5th wheel ball, rear receiver hitch, frame mounted storage boxes, AM/FM CD radio, air conditioning, 225/70R19.5 tires. Notes: This truck will barely run has engine issues. It might run to drive on trailer. Battery is completely dead, windshield is cracked. PLEASE ALLOW AT LEAST 30 DAYS FOR TITLE TRANSFER. Item Location: Belcher, LA 71004 Equipment Sold "AS IS, WHERE IS": All equipment/property is sold "AS IS, WHERE IS" with no warranty or guarantees, expressed or implied, No operational assessments have been made by DPA Auctions on this item, it has been photographed ONLY.

**#84 - Westfield MK130-41 Auger (DR8868)**

Westfield MK130-41 Auger (DR8868), 13" x41' portable grain auger, electric drive motor w/starter box. Notes: Item Location: Kennebec, SD 57544 Equipment Sold "AS IS, WHERE IS": All equipment/property is sold "AS IS, WHERE IS" with no warranty or guarantees, expressed or implied, No operational assessments have been made by DPA Auctions on this item, it has been photographed ONLY.

**#85 - 2014 John Deere 4940 Sprayer (NP6628, Unit 97820)**

2014 John Deere 4940 Sprayer (NP6628, Unit 97820), John Deere diesel engine (S/N RG6090R056983), hydrostatic transmission, heat, air conditioning, Am/Fm CD radio, 1,200 gallon stainless steel liquid system, 120' boom, 15" spacing, 5-way nozzle bodies, stainless steel chemical inductor, Raven Sidekick Pro Direct Injection System, Firestone 380/105R50 tires, StarFire 3000 globe, GreenStar 3 monitor, shows 3,966 hours. Notes: Item Location: Kinsley, KS 67547 Equipment Sold "AS IS, WHERE IS": All equipment/property is sold "AS IS, WHERE IS" with no warranty or guarantees, expressed or implied, No operational assessments have been made by DPA Auctions on this item, it has been photographed ONLY.

**#86 - NH3 Nurse Tank (NP6642, Unit T33)**

NH3 Nurse Tank (NP6642, Unit T33), 1,000 gallon capacity, top front fill, 4 wheel gear, flotation tires, data plate. Notes: Item Location: Kinsley, KS 67547 Equipment Sold "AS IS, WHERE IS": All equipment/property is sold "AS IS, WHERE IS" with no warranty or guarantees, expressed or implied, No operational assessments have been made by DPA Auctions on this item, it has been photographed ONLY.

**#87 - NH3 Nurse Tank (NP6643, Unit TG30)**

NH3 Nurse Tank (NP6643, Unit TG30), 1,000 gallon capacity, top front fill, 4 wheel gear, flotation tires, data plate. Notes: Item Location: Kinsley, KS 67547 Equipment Sold "AS IS, WHERE IS": All equipment/property is sold "AS IS, WHERE IS" with no warranty or guarantees, expressed or implied, No operational assessments have been made by DPA Auctions on this item, it has been photographed ONLY.

**#88 - NH3 Nurse Tank (NP6644, Unit 202A)**

NH3 Nurse Tank (NP6644, Unit 202A), 1,000 gallon capacity, top front fill, DUO Lift 4 wheel gear, water tank, NTIP inspection, flotation tires, data plate. Notes: Item Location: Kinsley, KS 67547 Equipment Sold "AS IS, WHERE IS": All equipment/property is sold "AS IS, WHERE IS" with no warranty or guarantees, expressed or implied, No operational assessments have been made by DPA Auctions on this item, it has been photographed ONLY.

**#89 - NH3 Nurse Tank (NP6645, Unit T23)**

NH3 Nurse Tank (NP6645, Unit T23), Trinity Steel Company Inc., 1,000 gallon capacity, top front fill, 4 wheel gear, water tank, NTIP inspection, flotation tires, data plate. Notes: Gear frame is broken. Item Location: Kinsley, KS 67547 Equipment Sold "AS IS, WHERE IS": All equipment/property is sold "AS IS, WHERE IS" with no warranty or guarantees, expressed or implied, No operational assessments have been made by DPA Auctions on this item, it has been photographed ONLY.



---

### #90 - NH3 Nurse Tank (NP6646, Unit 31S)

NH3 Nurse Tank (NP6646, Unit 31S), 1964 Consumer Cooperative Assn, 1,000 gallon capacity, top front fill, 4 wheel gear, water tank, NTIP inspection, flotation tires, data plate. Notes: Gear frame is broken. Item Location: Kinsley, KS 67547 Equipment Sold "AS IS, WHERE IS": All equipment/property is sold "AS IS, WHERE IS" with no warranty or guarantees, expressed or implied, No operational assessments have been made by DPA Auctions on this item, it has been photographed ONLY.



---

### #91 - Fertilizer Blender Frame (NP6631)

Fertilizer Blender Frame (NP6631), set up for Rice Lake Weighing System. Notes: Item Location: Kinsley, KS 67547 Equipment Sold "AS IS, WHERE IS": All equipment/property is sold "AS IS, WHERE IS" with no warranty or guarantees, expressed or implied, No operational assessments have been made by DPA Auctions on this item, it has been photographed ONLY.



---

### #92 - Liquid Nurse Trailer (NP6630, Unit C4)

Liquid Nurse Trailer (NP6630, Unit C4), tandem axle gear, flotation tires, 900 gallon poly tank, Honda gas motor, pump. Notes: Item Location: Kinsley, KS 67547 Equipment Sold "AS IS, WHERE IS": All equipment/property is sold "AS IS, WHERE IS" with no warranty or guarantees, expressed or implied, No operational assessments have been made by DPA Auctions on this item, it has been photographed ONLY.



---

### #94 - Poly Liquid Tank (NP6629, Unit 11)

Poly Liquid Tank (NP6629, Unit 11), 1,000 gallon capacity. Notes: Item Location: Kinsley, KS 67547 Equipment Sold "AS IS, WHERE IS": All equipment/property is sold "AS IS, WHERE IS" with no warranty or guarantees, expressed or implied, No operational assessments have been made by DPA Auctions on this item, it has been photographed ONLY.



---

### #95 - B-B Tandem Axle Nurse Trailer (NP6632)

B-B Tandem Axle Nurse Trailer (NP6632), 11L-15 flotation tires, Honda GX160 5.5 gas motor, pump, GVWR 14,000lbs. Notes: Missing 1 tire and has 1 flat tire. NO TITLE. Item Location: Kinsley, KS 67547 Equipment Sold "AS IS, WHERE IS": All equipment/property is sold "AS IS, WHERE IS" with no warranty or guarantees, expressed or implied, No operational assessments have been made by DPA Auctions on this item, it has been photographed ONLY.



---

### #96 - B-B Tandem Axle Nurse Trailer (NP6633)

B-B Tandem Axle Nurse Trailer (NP6633), 11L-15 flotation tires, GVWR 14,000lbs. Notes: NO TITLE. Item Location: Kinsley, KS 67547 Equipment Sold "AS IS, WHERE IS": All equipment/property is sold "AS IS, WHERE IS" with no warranty or guarantees, expressed or implied, No operational assessments have been made by DPA Auctions on this item, it has been photographed ONLY.



---

### #97 - 4 Wheel Running Gear (NP6635)

4 Wheel Running Gear (NP6635), 11L-15 flotation tires. Notes: Item Location: Kinsley, KS 67547 Equipment Sold "AS IS, WHERE IS": All equipment/property is sold "AS IS, WHERE IS" with no warranty or guarantees, expressed or implied, No operational assessments have been made by DPA Auctions on this item, it has been photographed ONLY.



---

### #98 - 4 Wheel Running Gear (NP6636)

4 Wheel Running Gear (NP6636), 11L-15 flotation tires. Notes: Item Location: Kinsley, KS 67547 Equipment Sold "AS IS, WHERE IS": All equipment/property is sold "AS IS, WHERE IS" with no warranty or guarantees, expressed or implied, No operational assessments have been made by DPA Auctions on this item, it has been photographed ONLY.



---

### #99 - 4 Wheel Running Gear (NP6637)

4 Wheel Running Gear (NP6637), 11L-15 flotation tires. Notes: Item Location: Kinsley, KS 67547 Equipment Sold "AS IS, WHERE IS": All equipment/property is sold "AS IS, WHERE IS" with no warranty or guarantees, expressed or implied, No operational assessments have been made by DPA Auctions on this item, it has been photographed ONLY.



---

### #100 - 4 Wheel Running Gear (NP6638)

4 Wheel Running Gear (NP6638), 11L-15 flotation tires. Notes: Item Location: Kinsley, KS 67547 Equipment Sold "AS IS, WHERE IS": All equipment/property is sold "AS IS, WHERE IS" with no warranty or guarantees, expressed or implied, No operational assessments have been made by DPA Auctions on this item, it has been photographed ONLY.





---

### #101 - 4 Wheel Running Gear (NP6640)

4 Wheel Running Gear (NP6640), 11L-15 flotation tires. Notes: 1 flat tire. Item Location: Kinsley, KS 67547 Equipment Sold "AS IS, WHERE IS": All equipment/property is sold "AS IS, WHERE IS" with no warranty or guarantees, expressed or implied, No operational assessments have been made by DPA Auctions on this item, it has been photographed ONLY.



---

### #102 - 4 Wheel Running Gear (NP6639)

4 Wheel Running Gear (NP6639), 11L-15 flotation tires. Notes: Item Location: Kinsley, KS 67547 Equipment Sold "AS IS, WHERE IS": All equipment/property is sold "AS IS, WHERE IS" with no warranty or guarantees, expressed or implied, No operational assessments have been made by DPA Auctions on this item, it has been photographed ONLY.



---

### #103 - (2) Hamby Running Gear Frames (NP6641)

(2) Hamby Running Gear Frames (NP6641), no tires. Notes: Item Location: Kinsley, KS 67547 Equipment Sold "AS IS, WHERE IS": All equipment/property is sold "AS IS, WHERE IS" with no warranty or guarantees, expressed or implied, No operational assessments have been made by DPA Auctions on this item, it has been photographed ONLY.



---

### #104 - Air Tag Axle (NP6634)

Air Tag Axle (NP6634), 255/70R22.5 tires. Notes: Item Location: Kinsley, KS 67547 Equipment Sold "AS IS, WHERE IS": All equipment/property is sold "AS IS, WHERE IS" with no warranty or guarantees, expressed or implied, No operational assessments have been made by DPA Auctions on this item, it has been photographed ONLY.



---

### #106 - Dry Conveyor (PZ6838)

Dry Conveyor (PZ6838), approx. 30' stainless steel dry fertilizer portable conveyor, electric motor, cleated belt. Notes: Item Location: Jonesboro, IL 62952 Equipment Sold "AS IS, WHERE IS": All equipment/property is sold "AS IS, WHERE IS" with no warranty or guarantees, expressed or implied, No operational assessments have been made by DPA Auctions on this item, it has been photographed ONLY.



---

### #107 - 2005 International 4300 RMC255 Unit 3088)

2005 International 4300 RMC255 Unit 3088), IHC diesel engine, automatic transmission, single axle, 10' steel flatbed, 48" sides, all swinging side gates, rear Tommy lift gate, rear receiver hitch, 22.5 tires, frame mount storage box, AM/FM cassette radio, air conditioning, shows 325,452 miles. Notes: Truck will NEED BATTERIES. Item Location: Hollandale, MS 38748 Equipment Sold "AS IS, WHERE IS": All equipment/property is sold "AS IS, WHERE IS" with no warranty or guarantees, expressed or implied, No operational assessments have been made by DPA Auctions on this item, it has been photographed ONLY.



---

### #108 - 2005 Apache AS1000 (DR8913)

2005 Apache AS1000 (DR8913), Cummins diesel engine, 3 way nozzle bodies, cab heat/air conditioning, 1000 gallon poly liquid tank, 60/90' boom, 20" spacing, poly chemical inductor, Raven SCS4600 controller, Envivio Pro Accu Boom, Auto-boom height (needs wiring harness work), SmartTrax, 14.9R46 rear tires, 380/80R38 front tires, AM/FM radio, air conditioning, shows 3090 hours. Notes: Liquid filter needs replaced. Item Location: Oakland, NE 68045 Equipment Sold "AS IS, WHERE IS": All equipment/property is sold "AS IS, WHERE IS" with no warranty or guarantees, expressed or implied, No operational assessments have been made by DPA Auctions on this item, it has been photographed ONLY.



---

### #109 - John Deere 2040 Tractor (NP6655)

John Deere 2040 Tractor (NP6655), ROPS, project tractor, will need starter and battery, front wheel bearings will need to be replaced and a couple of the shields are missing, the back left tire leaks air, hour meter does not work. Please contact seller prior to making any bids to confirm overall condition of tractor. Notes: Please contact seller prior to making any bids to confirm overall condition of tractor. Item Location: Blackwater, MO 65322 Equipment Sold "AS IS, WHERE IS": All equipment/property is sold "AS IS, WHERE IS" with no warranty or guarantees, expressed or implied, No operational assessments have been made by DPA Auctions on this item, it has been photographed ONLY.



---

### #110 - 2008 Peddinghaus Structural Beam Turner

2008 Peddinghaus Structural Beam Turner, model SWP12-C, 4000lb weight, 460 volt, 3 phase. Notes: Item Location: Granite City, IL 62040 Equipment Sold "AS IS, WHERE IS": All equipment/property is sold "AS IS, WHERE IS" with no warranty or guarantees, expressed or implied, No operational assessments have been made by DPA Auctions on this item, it has been photographed ONLY.



---

### #112 - 1986 Terra Gator 1844 Dry Floater (PZ9198, Unit 1808)

1986 Terra Gator 1844 Dry Floater (PZ9198, Unit 1808), Cummins 8.3L diesel engine, automatic transmission, air conditioning, heat, Am/Fm radio, New Leader L2020 G4 dry spreader box (S/N 114824), twin spinner, all hydraulic, Good Year 48x31.00-20 front tires, Good Year 66x43.00-25 rear tires, Raven SCS661 monitor, 4399 hours, 50,938 miles. Notes: Item Location: Goldfield, IA 50542 Equipment Sold "AS IS, WHERE IS": All equipment/property is sold "AS IS, WHERE IS" with no warranty or guarantees, expressed or implied, No operational assessments have been made by DPA Auctions on this item, it has been photographed ONLY.



---

### #113 - 2012 RoGator RG1300 Air Flow Spreader (NP6647, Unit 99354)

2012 RoGator RG1300 Air Flow Spreader (NP6647), Sisutronic 8.4L diesel engine, hydrostatic transmission, heat, air conditioning, Am/Fm CD radio, power mirrors, Valmar Model AM180 AirMax 180 dry air flow system (S/N 18012021), 70' boom, Agri-Cover electric roll tarp, 30.5 gallon stainless steel rinse tank, Goodyear 380/90R46 tires, Raven GPS, lightbar, Raven Viper Pro, shows 2,682 hours. Notes: Machine with have BRAND NEW batteries. This machine had over \$15,000 of documented repairs and improvements performed by LDI. Documentation is available upon request. Item Location: Macksville, KS 67557 Equipment Sold "AS IS, WHERE IS": All equipment/property is sold "AS IS, WHERE IS" with no warranty or guarantees, expressed or implied, No operational assessments have been made by DPA Auctions on this item, it has been photographed ONLY.



---

### #114 - 1996 GMC Top Kick Dry Floater (NP6648, Unit 97816)

1996 GMC Top Kick Dry Floater (NP6648, Unit 97816), Cat 3116 diesel engine (250HP), Eaton Fuller Roadranger 10 speed transmission, heat, air conditioning, Am/Fm radio, New Leader L2020G4 stainless steel dry spreader box (S/N 118846), hydraulic, dual spinners, belt over chain, GreenStar Dry Rate Controller, John Deere AutoTrac Universal Steering Kit 200, 66x43.00-25 rear tires, 48x25.00-20 front tires, shows 46,878 miles, shows 5,216 hours. Notes: Item Location: Burrton, KS 67020 Equipment Sold "AS IS, WHERE IS": All equipment/property is sold "AS IS, WHERE IS" with no warranty or guarantees, expressed or implied, No operational assessments have been made by DPA Auctions on this item, it has been photographed ONLY.



---

### #115 - DMI Anhydrous Tool Bar (NP6622, Unit 1)

DMI Anhydrous Tool Bar (NP6622, Unit 1), 4200 II, 20 knife, hydraulic wings, walking tandems, 11L-15 flotation tires. Notes: Item Location: Holcomb, KS 67851 Equipment Sold "AS IS, WHERE IS": All equipment/property is sold "AS IS, WHERE IS" with no warranty or guarantees, expressed or implied, No operational assessments have been made by DPA Auctions on this item, it has been photographed ONLY.



---

### #116 - DMI Anhydrous Tool Bar (NP6623)

DMI Anhydrous Tool Bar (NP6623), 4200 II, 20 knife, hydraulic wings, walking tandems, 11L-15 flotation tires. Notes: Item Location: Holcomb, KS 67851 Equipment Sold "AS IS, WHERE IS": All equipment/property is sold "AS IS, WHERE IS" with no warranty or guarantees, expressed or implied, No operational assessments have been made by DPA Auctions on this item, it has been photographed ONLY.



---

### #117 - DMI Anhydrous Tool Bar (NP6624)

DMI Anhydrous Tool Bar (NP6624), Nutri-Placr 4300, 19 knife, hydraulic wings, walking tandems, 11L-15 flotation tires. Notes: Item Location: Holcomb, KS 67851 Equipment Sold "AS IS, WHERE IS": All equipment/property is sold "AS IS, WHERE IS" with no warranty or guarantees, expressed or implied, No operational assessments have been made by DPA Auctions on this item, it has been photographed ONLY.



---

### #118 - Mobility Dry Spreader (NP6618)

Mobility Dry Spreader (NP6618), tandem axle, 21.5L-16.1 flotation tires, dual spinners, 540 PTO. Notes: (2) flat tires. Item Location: Holcomb, KS 67851 Equipment Sold "AS IS, WHERE IS": All equipment/property is sold "AS IS, WHERE IS" with no warranty or guarantees, expressed or implied, No operational assessments have been made by DPA Auctions on this item, it has been photographed ONLY.



---

### #119 - Poly Liquid Tank (NP6619)

Poly Liquid Tank (NP6619), 400 gallon capacity. Notes: Item Location: Holcomb, KS 67851 Equipment Sold "AS IS, WHERE IS": All equipment/property is sold "AS IS, WHERE IS" with no warranty or guarantees, expressed or implied, No operational assessments have been made by DPA Auctions on this item, it has been photographed ONLY.



---

### #121 - Poly Saddle Tanks (NP6620)

Poly Saddle Tanks (NP6620), (2) 100 gallon poly tanks, tractor mounting bracket. Notes: Came off John Deere 9000 series tractor. Item Location: Holcomb, KS 67851 Equipment Sold "AS IS, WHERE IS": All equipment/property is sold "AS IS, WHERE IS" with no warranty or guarantees, expressed or implied, No operational assessments have been made by DPA Auctions on this item, it has been photographed ONLY.



---

### #122 - Poly Saddle Tanks (NP6621)

Poly Saddle Tanks (NP6621), (2) 100 gallon poly tanks, tractor mounting bracket. Notes: Came off John Deere 9000 series tractor. Item Location: Holcomb, KS 67851 Equipment Sold "AS IS, WHERE IS": All equipment/property is sold "AS IS, WHERE IS" with no warranty or guarantees, expressed or implied, No operational assessments have been made by DPA Auctions on this item, it has been photographed ONLY.



---

### #123 - 3 Point Sidedress Bar (NP6625)

3 Point Sidedress Bar (NP6625), 12 knife, 9.5L-15 tires. Notes: Item Location: Holcomb, KS 67851 Equipment Sold "AS IS, WHERE IS": All equipment/property is sold "AS IS, WHERE IS" with no warranty or guarantees, expressed or implied, No operational assessments have been made by DPA Auctions on this item, it has been photographed ONLY.



---

### #124 - Sunflower Blade Plow (NP6626)

Sunflower Blade Plow (NP6626), Model 3671-35, approx. 35' width, front, coulters, hydraulic wings, 9.5L-15SL flotation tires, rear trash whips. Notes: Needs blades and all new picker bearings. Item Location: Cimarron, KS 67835 Equipment Sold "AS IS, WHERE IS": All equipment/property is sold "AS IS, WHERE IS" with no warranty or guarantees, expressed or implied, No operational assessments have been made by DPA Auctions on this item, it has been photographed ONLY.



---

### #125 - Homemade Fuel Trailer (NP6627)

Homemade Fuel Trailer (NP6627), 500 gallon capacity, fuel gun, Tuthill pump, tandem axle, 235/75R15 tires, bumper hitch. Notes: NO TITLE. Item Location: Cimarron, KS 67835 Equipment Sold "AS IS, WHERE IS": All equipment/property is sold "AS IS, WHERE IS" with no warranty or guarantees, expressed or implied, No operational assessments have been made by DPA Auctions on this item, it has been photographed ONLY.



---

### #126 - Simonsen Dry Mico Bin Unit (PZ9204)

Simonsen Dry Mico Bin Unit (PZ9204), Simonsen model GB72STA 72 cu ft tender for mico-nutrients, auger, hydraulic controls. Notes: Item Location: Goldfield, IA 50542 Equipment Sold "AS IS, WHERE IS": All equipment/property is sold "AS IS, WHERE IS" with no warranty or guarantees, expressed or implied, No operational assessments have been made by DPA Auctions on this item, it has been photographed ONLY.



---

### #127 - DMI 4250 Tool Bar (PZ9168, Unit 103)

DMI 4250 Tool Bar (PZ9168, Unit 103), DMI 4250 13 knife pull type tool bar, New coulters, double disc sealers, Raven super cooler, hydraulic wings, stainless steel liquid tank, 12.5L-15 flotation tires, rear hitch, Raven SCS440 monitor. Notes: Item Location: Titonka, IA 50480 Equipment Sold "AS IS, WHERE IS": All equipment/property is sold "AS IS, WHERE IS" with no warranty or guarantees, expressed or implied, No operational assessments have been made by DPA Auctions on this item, it has been photographed ONLY.



---

### #128 - Simonsen Dry Mico Bin Unit (PZ9169)

Simonsen Dry Mico Bin Unit (PZ9169) Simonsen model GB72STA 72 cu ft tender for mico-nutrients, auger, hydraulic controls. Notes: Item Location: Titonka, IA 50480 Equipment Sold "AS IS, WHERE IS": All equipment/property is sold "AS IS, WHERE IS" with no warranty or guarantees, expressed or implied, No operational assessments have been made by DPA Auctions on this item, it has been photographed ONLY.



---

### #129 - 1967 Trinity Storage Tank (PZ9186)

1967 Trinity Storage Tank (PZ9186), 1967 Trinity 26,000 gallon NH3 storage tank, S/N 9043, Master tank volume gauge, tank and valve only, data plate. Notes: This storage tank must be removed by September 1st, 2018 with NO exceptions. Dismantle, removal and transportation is at the expense, risk and liability of the buyer. Item Location: Wesley, IA 50483 Equipment Sold "AS IS, WHERE IS": All equipment/property is sold "AS IS, WHERE IS" with no warranty or guarantees, expressed or implied, No operational assessments have been made by DPA Auctions on this item, it has been photographed ONLY.



### #130 - Batco Drive Over Conveyor (PZ9170)

Batco Drive Over Conveyor (PZ9170) Batco model PS2500 drive over conveyor, 18" belt, Pacemaker 10 hp electric motor, control box, portable. Notes: Item Location: Wesley, IA 50483 Equipment Sold "AS IS, WHERE IS": All equipment/property is sold "AS IS, WHERE IS" with no warranty or guarantees, expressed or implied, No operational assessments have been made by DPA Auctions on this item, it has been photographed ONLY.



### #131 - Batco Conveyor (PZ9171)

Batco Conveyor (PZ9171), Batco model 2095 - S conveyor, 20" belt, Baldor 50 hp electric motor, cord, Square D control box, portable, ST235/85R16 tires. Notes: Item Location: Wesley, IA 50483 Equipment Sold "AS IS, WHERE IS": All equipment/property is sold "AS IS, WHERE IS" with no warranty or guarantees, expressed or implied, No operational assessments have been made by DPA Auctions on this item, it has been photographed ONLY.



### #132 - Simonsen Dry Mico Bin Unit (PZ9172)

Simonsen Dry Mico Bin Unit (PZ9172) Simonsen model GB72STA 72 cu ft tender for mico-nutrients, auger, hydraulic controls. Notes: Item Location: Wesley, IA 50483 Equipment Sold "AS IS, WHERE IS": All equipment/property is sold "AS IS, WHERE IS" with no warranty or guarantees, expressed or implied, No operational assessments have been made by DPA Auctions on this item, it has been photographed ONLY.



### #133 - Schlagel Powerflow Conveyor (PZ9193)

Schlagel Powerflow Conveyor (PZ9193), Schlagel model 1C1621 48', 5000 bushel per hour, incline conveyor, by pass inlets, Reliance 25 hp electric motor, Dodge torque arm speed reducer TXT625T. Notes: Electric motor & drive still in box, unit has never been used. Item Location: Renwick, IA 50577 Equipment Sold "AS IS, WHERE IS": All equipment/property is sold "AS IS, WHERE IS" with no warranty or guarantees, expressed or implied, No operational assessments have been made by DPA Auctions on this item, it has been photographed ONLY.



### #134 - Friesen Hopper Bin (PZ9195)

Friesen Hopper Bin (PZ9195), Friesen cone bottom bin, stands, ladder, long extended auger, electric motor. Notes: This bin must be removed by September 1st, 2018 with NO exceptions. Dismantle, removal and transportation is at the expense, risk and liability of the buyer. Item Location: Renwick, IA 50577 Equipment Sold "AS IS, WHERE IS": All equipment/property is sold "AS IS, WHERE IS" with no warranty or guarantees, expressed or implied, No operational assessments have been made by DPA Auctions on this item, it has been photographed ONLY.



### #135 - Friesen Hopper Bin (PZ9196)

Friesen Hopper Bin (PZ9196), Friesen cone bottom bin, 2,375 cu ft., stands, ladder. Notes: This bin must be removed by September 1st, 2018 with NO exceptions. Dismantle, removal and transportation is at the expense, risk and liability of the buyer. Item Location: Renwick, IA 50577 Equipment Sold "AS IS, WHERE IS": All equipment/property is sold "AS IS, WHERE IS" with no warranty or guarantees, expressed or implied, No operational assessments have been made by DPA Auctions on this item, it has been photographed ONLY.



### #136 - Friesen Hopper Bin (PZ9197)

Friesen Hopper Bin (PZ9197), Friesen cone bottom bin, 2,375 cu ft., stands, ladder. Notes: This bin must be removed by September 1st, 2018 with NO exceptions. Dismantle, removal and transportation is at the expense, risk and liability of the buyer. Item Location: Renwick, IA 50577 Equipment Sold "AS IS, WHERE IS": All equipment/property is sold "AS IS, WHERE IS" with no warranty or guarantees, expressed or implied, No operational assessments have been made by DPA Auctions on this item, it has been photographed ONLY.



### #137 - 1966 Trinity Storage Tank (PZ9187)

1966 Trinity Storage Tank (PZ9187), 1966 Trinity 18,000 gallon NH3 storage tank, S/N 209118, Master tank volume gauge, tank and valve only, data plate. Notes: This storage tank must be removed by September 1st, 2018 with NO exceptions. Dismantle, removal and transportation is at the expense, risk and liability of the buyer. Item Location: Wesley, IA 50483 Equipment Sold "AS IS, WHERE IS": All equipment/property is sold "AS IS, WHERE IS" with no warranty or guarantees, expressed or implied, No operational assessments have been made by DPA Auctions on this item, it has been photographed ONLY.





### #138 - Motorized Hose Reel (PZ9194)

Motorized Hose Reel (PZ9194), F/S manufacturing super wheel, electric hose reel. Notes: Item Location: Renwick, IA 50577 Equipment Sold "AS IS, WHERE IS": All equipment/property is sold "AS IS, WHERE IS" with no warranty or guarantees, expressed or implied, No operational assessments have been made by DPA Auctions on this item, it has been photographed ONLY.



### #139 - 1990 Mack CH613 Truck (PZ9200)

1990 Mack CH613 Truck (PZ9200), Mack E6-350 diesel engine, manual transmission, air conditioning, heat, Am/Fm CD stereo, tandem axle, full screw, cheater axle, air ride suspension, 315/80R22.5 front tires, 11R22.5 rear tires. Notes: Item Location: Eagle Grove, IA 50533 Equipment Sold "AS IS, WHERE IS": All equipment/property is sold "AS IS, WHERE IS" with no warranty or guarantees, expressed or implied, No operational assessments have been made by DPA Auctions on this item, it has been photographed ONLY.



### #140 - 1993 Mack CH613 Dry Tender Truck (PZ9199)

1993 Mack CH613 Dry Tender Truck (PZ9199), Mack E7-350diesel engine, 9 speed transmission, air conditioning, heat, Am/Fm cassette radio, cruise control, engine brake, tandem axle, full screw, air ride suspension, 16 ton dry tender box, rear discharge auger, all hydraulic, roll over tarp, 11R22.5 front tires, 275/80R22.5 rear tires, shows 390,800 miles, 13,586 hours. Notes: Item Location: Eagle Grove, IA 50533 Equipment Sold "AS IS, WHERE IS": All equipment/property is sold "AS IS, WHERE IS" with no warranty or guarantees, expressed or implied, No operational assessments have been made by DPA Auctions on this item, it has been photographed ONLY.



### #141 - 1983 GMC 7000 Grain Truck (PZ9201, Unit 1628)

1983 GMC 7000 Grain Truck (PZ9201, Unit 1628), gas engine, 5 speed transmission, air conditioning, heat, Am/Fm radio, 2 speed rear end, Omaha Standard 16' steel grain box, wood floor, cargo doors, grain chutes, hoist, 11R22.5 front tires, 295/75R22.5 rear tires. Notes: Item Location: Eagle Grove, IA 50533 Equipment Sold "AS IS, WHERE IS": All equipment/property is sold "AS IS, WHERE IS" with no warranty or guarantees, expressed or implied, No operational assessments have been made by DPA Auctions on this item, it has been photographed ONLY.



### #142 - 2007 Volvo Truck (NP6656)

2007 Volvo Truck (NP6656), Cummins ISX diesel engine (475HP), RTO-16910B-DM3 10 speed transmission, single bunk sleeper, heat, air conditioning, Am/Fm CD radio, air ride cab, tandem axle, air ride suspension, 12,500lb front axle, 5th wheel plate, dual fuel tanks, 22.5 tires, shows 790,906 miles. Notes: Item Location: Niota, IL 62358 Equipment Sold "AS IS, WHERE IS": All equipment/property is sold "AS IS, WHERE IS" with no warranty or guarantees, expressed or implied, No operational assessments have been made by DPA Auctions on this item, it has been photographed ONLY.



### #143 - 2014 Hagie STS14 AWS Sprayer (PZ9208)

2014 Hagie STS14 AWS Sprayer (PZ9208), Cummins diesel engine, hydrostatic transmission, air conditioning, heat, Am/Fm radio, Luxury cab, All Wheel Steer, 1400 gallon stainless steel liquid system, 120' boom, 15" spacing, top side poly rinse tank, Continental 650/65R42 flotation tires, Firestone IF380/105R50 row crop tires, Norac 5 sensors, tall crop package, Ag Leader Integra/Paradyne, shows 1839 hours. Notes: 1 owner farmer machine. Excellent condition. Item Location: Harristown, IL 62537 Equipment Sold "AS IS, WHERE IS": All equipment/property is sold "AS IS, WHERE IS" with no warranty or guarantees, expressed or implied, No operational assessments have been made by DPA Auctions on this item, it has been photographed ONLY.



### #144 - NH3 Storage Tank (PZ9188)

NH3 Storage Tank (PZ9188), 11,000 gallon NH3 storage tank, Master tank volume gauge, tank and valve only. Notes: This storage tank must be removed by September 1st, 2018 with NO exceptions. Dismantle, removal and transportation is at the expense, risk and liability of the buyer. Item Location: Wesley, IA 50483 Equipment Sold "AS IS, WHERE IS": All equipment/property is sold "AS IS, WHERE IS" with no warranty or guarantees, expressed or implied, No operational assessments have been made by DPA Auctions on this item, it has been photographed ONLY.



### #146 - 2013 New Leader DN 345 John Deere Buggy (ED504)

2013 New Leader DN 345 John Deere Buggy (ED504), John Deere rate controller calibrated for both lime and fertilizer, 1000 RPM PTO shaft was replaced last fall, tires are in great shape, hydraulic brakes, used mostly for lime in the fall, minimal use on fertilizer. Notes: Item Location: Bement, IL 61813 Equipment Sold "AS IS, WHERE IS": All equipment/property is sold "AS IS, WHERE IS" with no warranty or guarantees, expressed or implied, No operational assessments have been made by DPA Auctions on this item, it has been photographed ONLY.



### #147 - 2013 Bowman Super Duty 4000 Cattle Chute (AL360)

2013 Bowman Super Duty 4000 Cattle Chute (AL360), live bottom with 3 phase motor, slatted floors, rubber padded head gate, weight 4000 lbs., overall length 105", overall height 89", overall width 72", floor plating 3/8", head and tailgate bushings, inside length 94", inside height 67" plating 3/16", frame tube 3"x3"x1/4" wall, 3/4" rubber padding. Notes: Item Location: Fremont, NE 68025 Equipment Sold "AS IS, WHERE IS": All equipment/property is sold "AS IS, WHERE IS" with no warranty or guarantees, expressed or implied, No operational assessments have been made by DPA Auctions on this item, it has been photographed ONLY.



### #148 - 1985 Bowman Hydraulic Cattle Chute (AL361)

1985 Bowman Hydraulic Cattle Chute (AL361), 1 phase motor. Notes: Item Location: Fremont, NE 68025 Equipment Sold "AS IS, WHERE IS": All equipment/property is sold "AS IS, WHERE IS" with no warranty or guarantees, expressed or implied, No operational assessments have been made by DPA Auctions on this item, it has been photographed ONLY.



### #149 - 2008 Salford 570 RTS (DL261)

2008 Salford 570 RTS (DL261), 30', 7" spacing, hydraulic wings, flotation tires, rear harrow, rolling baskings, walking tandems. Notes: Purchased new with regular maintenance done. No cracks or welds on framework. Has 1 bent pipe on harrow as shown in picture and a bent tube on rolling basket, also shown in picture. Neither affects the performance on tool. Is currently being used this Spring. Item Location: Keytesville, MO 65261 Equipment Sold "AS IS, WHERE IS": All equipment/property is sold "AS IS, WHERE IS" with no warranty or guarantees, expressed or implied, No operational assessments have been made by DPA Auctions on this item, it has been photographed ONLY.



### #150 - 2013 Heil MC407 (AL357)

2013 Heil MC407 (AL357), aluminum petroleum tanker, length 42', Dot 407 MC, external ring, double conical, baffles, capacity 8400 gal, single compartment center discharge, scully overfill protection, vapor recovery, 1 manhole, 3 cabinets, 2 hose tubes, air ride/dump valve, DOT inspections are current, 11x22.5 tires, aluminum rims, currently in ethanol service, great for gasoline or diesel hauling. Notes: Item Location: Peoria, IL 61614 Equipment Sold "AS IS, WHERE IS": All equipment/property is sold "AS IS, WHERE IS" with no warranty or guarantees, expressed or implied, No operational assessments have been made by DPA Auctions on this item, it has been photographed ONLY.



### #151 - 2010 Kenworth W900L Truck (AL358)

2010 Kenworth W900L Truck (AL358), Cummins ISX diesel engine (450HP), RTL016913A-13 speed transmission, tandem axle, rear end -40000 Kenworth 8 air bag ride, 3:55 ratio, dual 100 gallon fuel tanks, full hydraulic wet kit, performance diesel delete kit, shows 650,405 miles, one owner. Notes: Item Location: Peoria, IL 61614 Equipment Sold "AS IS, WHERE IS": All equipment/property is sold "AS IS, WHERE IS" with no warranty or guarantees, expressed or implied, No operational assessments have been made by DPA Auctions on this item, it has been photographed ONLY.



### #152 - NH3 Storage Tank (PZ9189)

NH3 Storage Tank (PZ9189), 11,000 gallon NH3 storage tank, Master tank volume gauge, tank and valve only. Notes: This storage tank must be removed by September 1st, 2018 with NO exceptions. Dismantle, removal and transportation is at the expense, risk and liability of the buyer. Item Location: Wesley, IA 50483 Equipment Sold "AS IS, WHERE IS": All equipment/property is sold "AS IS, WHERE IS" with no warranty or guarantees, expressed or implied, No operational assessments have been made by DPA Auctions on this item, it has been photographed ONLY.



### #153 - NH3 Plumbing & Pump (PZ9190)

NH3 Plumbing & Pump (PZ9190), Plumbing, load valves, Corken pump, Dayton 10 hp electric motor. Notes: Item Location: Wesley, IA 50483 Equipment Sold "AS IS, WHERE IS": All equipment/property is sold "AS IS, WHERE IS" with no warranty or guarantees, expressed or implied, No operational assessments have been made by DPA Auctions on this item, it has been photographed ONLY.



### #154 - NH3 Loadout (PZ9191)

NH3 Loadout (PZ9191), 4 - Station NH3 loadouts, 6' x 8' platform, 2 - 3' x 8' fold down platforms, stairs. Notes: Item Location: Wesley, IA 50483 Equipment Sold "AS IS, WHERE IS": All equipment/property is sold "AS IS, WHERE IS" with no warranty or guarantees, expressed or implied, No operational assessments have been made by DPA Auctions on this item, it has been photographed ONLY.



---

**#155 - NH3 Loadout (PZ9192)**

NH3 Loadout (PZ9192), 4 - Station NH3 loadouts, 6' x 8' platform, 2 - 3' x 8' fold down platforms, stairs. Notes: Item Location: Wesley, IA 50483 Equipment Sold "AS IS, WHERE IS": All equipment/property is sold "AS IS, WHERE IS" with no warranty or guarantees, expressed or implied, No operational assessments have been made by DPA Auctions on this item, it has been photographed ONLY.



---

**#156 - 1979 International (AL350)**

1979 International (AL350), cab and chassis, tandem axle, diesel International 466 engine, 13 speed Eaton transmission, 16' of frame behind the can. Notes: Item Location: Arcadia, WI 54612 Equipment Sold "AS IS, WHERE IS": All equipment/property is sold "AS IS, WHERE IS" with no warranty or guarantees, expressed or implied, No operational assessments have been made by DPA Auctions on this item, it has been photographed ONLY.



---

**#157 - 2013 Kenworth 370 conventional truck (TR4790)**

2013 Kenworth 370 conventional truck (TR4790), Paccar PX-8 engine- 350 HP / Allison automatic transmission, 54,600 GVWR, Unit has 171, 500 miles, Has Seneca ?FuelMaster? model SW35A, 3,500 gallon, 5 compartment tank. (900-800-700-600-500), (Full specs on truck and tank available on request) Unit struck a culvert and overturned. Damage to right side and front end as seen in photos. Unit will sell with a Nebraska Salvage title. Notes: SALVAGE TITLE. Item Location: Cato, WI 54230 Equipment Sold "AS IS, WHERE IS": All equipment/property is sold "AS IS, WHERE IS" with no warranty or guarantees, expressed or implied, No operational assessments have been made by DPA Auctions on this item, it has been photographed ONLY.



---

**#158 - Hurricane Ditcher (CP742)**

Hurricane Ditcher (CP742), 3 pt., ditcher, PTO, Model HD 3pt26, ONLY USED ON ONE JOB. Notes: Item Location: Falls City, NE 68355 Equipment Sold "AS IS, WHERE IS": All equipment/property is sold "AS IS, WHERE IS" with no warranty or guarantees, expressed or implied, No operational assessments have been made by DPA Auctions on this item, it has been photographed ONLY.



---

**#159 - Batco 1535 Conveyor (TR738)**

Batco 1535 Conveyor (TR738), portable, belt, ST205/75D15 tires, electric Honda GX90 motor, 70 hrs, 35'. Notes: Item Location: Falls City, NE 68355 Equipment Sold "AS IS, WHERE IS": All equipment/property is sold "AS IS, WHERE IS" with no warranty or guarantees, expressed or implied, No operational assessments have been made by DPA Auctions on this item, it has been photographed ONLY.



---

**#160 - A1 Mist Sprayer (CP735)**

A1 Mist Sprayer (CP735), gas motor, pump, 100 gal ply tank, 133 hours. Notes: A1 Mist Sprayer ONLY, the pickup will sell separately as Lot #168 on this auction, please bid accordingly. Item Location: Falls City, NE 68355 Equipment Sold "AS IS, WHERE IS": All equipment/property is sold "AS IS, WHERE IS" with no warranty or guarantees, expressed or implied, No operational assessments have been made by DPA Auctions on this item, it has been photographed ONLY.



---

**#161 - Case Plow (CP734)**

Case Plow (CP734), 3 pt, hydraulic, coulters, 6 blade plow. Notes: Item Location: Falls City, NE 68355 Equipment Sold "AS IS, WHERE IS": All equipment/property is sold "AS IS, WHERE IS" with no warranty or guarantees, expressed or implied, No operational assessments have been made by DPA Auctions on this item, it has been photographed ONLY.



---

**#162 - 2013 PJ Car Trailer (CP739)**

2013 PJ Car Trailer (CP739), ball hitch, tandem axle, tilt bed, wood deck, 30' break away system, ST235/80R16 tires. Notes: Item Location: Falls City, NE 68355 Equipment Sold "AS IS, WHERE IS": All equipment/property is sold "AS IS, WHERE IS" with no warranty or guarantees, expressed or implied, No operational assessments have been made by DPA Auctions on this item, it has been photographed ONLY.



---

**#163 - Homemade Flatbed Trailer (CP740)**

Homemade Flatbed Trailer (CP740), model 8-28, tandem axle, wood floor, front basket, 21' bed. Notes: NO TITLE. Item Location: Falls City, NE 68355 Equipment Sold "AS IS, WHERE IS": All equipment/property is sold "AS IS, WHERE IS" with no warranty or guarantees, expressed or implied, No operational assessments have been made by DPA Auctions on this item, it has been photographed ONLY.



---

### #164 - 2000 Wade Iron Trailer (CP741)

2000 Wade Iron Trailer (CP741), 40' length, 22.5 tires, end gate, tandem axle, air brakes, spring ride, GVWR 68500. Notes: Item Location: Falls City, NE 68355 Equipment Sold "AS IS, WHERE IS": All equipment/property is sold "AS IS, WHERE IS" with no warranty or guarantees, expressed or implied, No operational assessments have been made by DPA Auctions on this item, it has been photographed ONLY.



---

### #165 - 2006 Talbert T-2 Lowboy Trailer (CP743)

2006 Talbert T-2 Lowboy Trailer (CP743), dual hydraulic detach, wood deck, 51 ton capacity, air lift 3rd axle, 26' well, 11' 5" fenders, 9' keel, air brakes, outriggers, D-rings, 22.5 tires, Ridewell air ride suspension, GVWR 125,350, Honda motor, Notes: Item Location: Falls City, NE 68355 Equipment Sold "AS IS, WHERE IS": All equipment/property is sold "AS IS, WHERE IS" with no warranty or guarantees, expressed or implied, No operational assessments have been made by DPA Auctions on this item, it has been photographed ONLY.



---

### #166 - 2006 Talbert Axle (CP744)

2006 Talbert Axle (CP744), 22.5 tires, Ridewell air ride suspension, HAS TITLE. Notes: Item Location: Falls City, NE 68355 Equipment Sold "AS IS, WHERE IS": All equipment/property is sold "AS IS, WHERE IS" with no warranty or guarantees, expressed or implied, No operational assessments have been made by DPA Auctions on this item, it has been photographed ONLY.



---

### #167 - 1998 Peterbilt 379 Truck (CP745)

1998 Peterbilt 379 Truck (CP745), tandem axle, 5th wheel plate, full fenders, 24.5 tires, air ride suspension/brakes, 12,000lb front, 40,000lb rear end, liftable 20,000lb pusher axle, cruise control, AM/FM CD player, 792,655 miles, 13 speed transmission, heat/AC, 3406E single turbo Cat diesel engine, dual 130 gal aluminum tanks. Notes: CRACK IN WINDSHIELD. Item Location: Falls City, NE 68355 Equipment Sold "AS IS, WHERE IS": All equipment/property is sold "AS IS, WHERE IS" with no warranty or guarantees, expressed or implied, No operational assessments have been made by DPA Auctions on this item, it has been photographed ONLY.



---

### #168 - 1999 Ford Ranger XLT (CP737)

1999 Ford Ranger XLT (CP737), extended cab, gas engine, 4x4, automatic transmission, AM/FM radio CD player, bed rails, mud flaps, AC/Heat, power windows/locks, 151,632 miles. Notes: A1 Mist Sprayer shown in pictures DOES NOT SELL with this pickup, it will be sold separately as Lot #160 in this auction, please bid accordingly. Item Location: Falls City, NE 68355 Equipment Sold "AS IS, WHERE IS": All equipment/property is sold "AS IS, WHERE IS" with no warranty or guarantees, expressed or implied, No operational assessments have been made by DPA Auctions on this item, it has been photographed ONLY.



---

### #169 - 1993 Rinker 180 (CP001)

1993 Rinker 180 (CP001), Mercruiser 3.0L engine, open bow, 18', 188 hours, Eagle Magnaview fish finder, Shorlander single axle trailer included, canopy, boat tarp. Notes: Always stored in a heated building, recent oil change, new trailer tires. Item Location: Fremont, NE 68025 Equipment Sold "AS IS, WHERE IS": All equipment/property is sold "AS IS, WHERE IS" with no warranty or guarantees, expressed or implied, No operational assessments have been made by DPA Auctions on this item, it has been photographed ONLY.



---

### #170 - 2005 Freightliner Columbia Day Cab Truck (NP6663, Unit 77519)

2005 Freightliner Columbia Day Cab Truck (NP6663, Unit 77519), Cat diesel engine, manual transmission, tandem axle, 5th wheel plate, approx. 500,000 miles. Notes: This truck has extensive damage and will be sold with a SALVAGE TITLE. Contact seller for more details. Item Location: Aurora, NE 68818 Equipment Sold "AS IS, WHERE IS": All equipment/property is sold "AS IS, WHERE IS" with no warranty or guarantees, expressed or implied, No operational assessments have been made by DPA Auctions on this item, it has been photographed ONLY.



---

### #171 - NEW Plett Disc (NP6664)

NEW Plett Disc (NP6664), 12' wide, 28 1/4" discs, 11" disc spacing, 2" shaft with lube bearings. Notes: Item Location: Carroll, IA 51401 Equipment Sold "AS IS, WHERE IS": All equipment/property is sold "AS IS, WHERE IS" with no warranty or guarantees, expressed or implied, No operational assessments have been made by DPA Auctions on this item, it has been photographed ONLY.





### #172 - Fast Liquid Sprayer (PZ9234)

Fast Liquid Sprayer (PZ9234), Fast model 8224 liquid applicator 25 knife, coulters, 30" spacing, 5 section, 2500 gallon poly liquid system, 3" fill, John Deere swath control, hydraulic wings, 380/90R46 dual tires. Notes: Excellent sprayer, ready to go. Item Location: Bargersville, IN 46106 Equipment Sold "AS IS, WHERE IS": All equipment/property is sold "AS IS, WHERE IS" with no warranty or guarantees, expressed or implied, No operational assessments have been made by DPA Auctions on this item, it has been photographed ONLY.



### #173 - 2018 Kenworth T680 Day Cab Truck (NP6659, Unit 77486)

2018 Kenworth T680 Day Cab Truck (NP6659, Unit 77486), Paccar MX-11 diesel engine, 430HP diesel engine, Eaton F016E313A transmission, heat, air conditioning, Am/Fm CD radio, cruise control, power windows and locks, tandem axle, air ride suspension, 5th wheel plate, 3.55 axle ratio, GVWR 50,350lbs, Paccar axle 40K dual, shows 35,958 miles. Notes: This truck has extensive damage and will be sold with a SALVAGE TITLE. Contact seller for more details. Item Location: Valders, WI 54245 Equipment Sold "AS IS, WHERE IS": All equipment/property is sold "AS IS, WHERE IS" with no warranty or guarantees, expressed or implied, No operational assessments have been made by DPA Auctions on this item, it has been photographed ONLY.



### #176 - 8' Pronghorn Utility Bed (AL356)

8' Pronghorn Utility Bed (AL356), 7 box storage compartments, 5th wheel hitch, D rings, headache rack. Notes: Winch, transfer pump, and item in the storage compartments do not sell with this utility bed. Item Location: Silver Lake, KS 66539 Equipment Sold "AS IS, WHERE IS": All equipment/property is sold "AS IS, WHERE IS" with no warranty or guarantees, expressed or implied, No operational assessments have been made by DPA Auctions on this item, it has been photographed ONLY.



### #177 - 1971 3820A loader and IH Backhoe (AL352)

1971 3820A loader and IH Backhoe (AL352), 6 cylinder diesel engine, automatic transmission with high, low, forward, and reverse, front loader/bucket, rear extendahoe, 4WD. Notes: Item Location: Fayette, IA 52142 Equipment Sold "AS IS, WHERE IS": All equipment/property is sold "AS IS, WHERE IS" with no warranty or guarantees, expressed or implied, No operational assessments have been made by DPA Auctions on this item, it has been photographed ONLY.



### #178 - 1979 Corn Belt Manufacturing Grain Trailer (AL351)

1979 Corn Belt Manufacturing Grain Trailer (AL351), tandem axle, roll over tarp, rear ladder. Notes: Item Location: Fayette, IA 52142 Equipment Sold "AS IS, WHERE IS": All equipment/property is sold "AS IS, WHERE IS" with no warranty or guarantees, expressed or implied, No operational assessments have been made by DPA Auctions on this item, it has been photographed ONLY.



### #179 - 2004 Bobcat S185 Skid Loader (AL346)

2004 Bobcat S185 Skid Loader (AL346), Kubota four cylinder Diesel engine, hydrostatic transmission, 68" wide bucket, auxiliary hydraulics, enclosed cab, heat, hand and foot controls, spring suspension seat, 10-16.5 tires, shoes 1785.6 hours on meter. Notes: Item Location: Chariton, IA 50049 Equipment Sold "AS IS, WHERE IS": All equipment/property is sold "AS IS, WHERE IS" with no warranty or guarantees, expressed or implied, No operational assessments have been made by DPA Auctions on this item, it has been photographed ONLY.



### #180 - 2007 Elite 40' Flex Control Gooseneck Trailer (AL353)

2007 Elite 40' Flex Control Gooseneck Trailer (AL353), tandem axle, electric brakes, slide in ramps, 102" wide, led lights, wiring harness, driver side tool box, 10000 lbs. axles, GVWR 20000 lbs. Notes: Item Location: Chariton, IA 50049 Equipment Sold "AS IS, WHERE IS": All equipment/property is sold "AS IS, WHERE IS" with no warranty or guarantees, expressed or implied, No operational assessments have been made by DPA Auctions on this item, it has been photographed ONLY.



### #181 - 2005 XL Specialized RGN Trailer (AL347)

2005 XL Specialized RGN Trailer (AL347), 48' overall length, 9' 6" top deck, 30' well, 8' 6" back deck, tandem axle, air ride suspension, load rating on trailer, 60,000 lbs. distributed, 54,000 lbs. in 16' concentrated, aluminum pullout outriggers, 7 per side, front pull out aluminum ramps, bent "D" rings on each side, 7 per side on the well, 2 on the back, 2 on the top deck, 2 on the back step, 2 on the front detach, 2 per side on front deck, 4 strap wrenches per side on well, 2 per side on top deck, 255/70 R 22.5 tires, aluminum outside wheels, steel inside wheels. Notes: Item Location: Chariton, IA 50049 Equipment Sold "AS IS, WHERE IS": All equipment/property is sold "AS IS, WHERE IS" with no warranty or guarantees, expressed or implied, No operational assessments have been made by DPA Auctions on this item, it has been photographed ONLY.



---

### #182 - 2018 Industries America Easy Man Tree and Post Puller (AL362)

2018 Industries America Easy Man Tree and Post Puller (AL362), unused, universal attach skid steer mount, hydraulic cylinder and hoses. Notes: Item Location: Pender, NE 68047 Equipment Sold "AS IS, WHERE IS": All equipment/property is sold "AS IS, WHERE IS" with no warranty or guarantees, expressed or implied, No operational assessments have been made by DPA Auctions on this item, it has been photographed ONLY.



---

### #183 - 2018 Easy Man 96" Skid Steer Bucket (AL363)

2018 Easy Man 96" Skid Steer Bucket (AL363), unused, universal attach skid steer mount. Notes: Item Location: Pender, NE 68047 Equipment Sold "AS IS, WHERE IS": All equipment/property is sold "AS IS, WHERE IS" with no warranty or guarantees, expressed or implied, No operational assessments have been made by DPA Auctions on this item, it has been photographed ONLY.



---

### #184 - 2018 Easy Man 84" Skid Steer Bucket (AL364)

2018 Easy Man 84" Skid Steer Bucket (AL364), unused, universal attach skid steer mount. Notes: Item Location: Pender, NE 68047 Equipment Sold "AS IS, WHERE IS": All equipment/property is sold "AS IS, WHERE IS" with no warranty or guarantees, expressed or implied, No operational assessments have been made by DPA Auctions on this item, it has been photographed ONLY.



---

### #185 - 2004 Super Liner Flatbed Trailer with Beaver Tail/ 2000 Vermeer 16x20A Directional Drill/Boring Machine (AL355)

2004 Super Liner Flatbed Trailer with Beaver Tail/ 2000 Vermeer 16x20A Directional Drill/Boring Machine (AL355), 2004 Super Liner Flat Bed Trailer With Beavertail, tires have good tread left, brakes work on trailer, pintle hitch, Vermeer mud mixing system, hopper broke off as seller was pulling home, Honda pump and motor work great, hose for hookup from drill to trailer, power washer wand and hose, 2000 Vermeer 16x20A directional drill/boring machine, Perkins diesel 4 cylinder engine, runs great, water pumping system works great and in full on/off with switch, approximately 300' of drill stem in poor condition, safety switches on machine have been replaced recently. Notes: Item Location: Troy Mills, IA 52344 Equipment Sold "AS IS, WHERE IS": All equipment/property is sold "AS IS, WHERE IS" with no warranty or guarantees, expressed or implied, No operational assessments have been made by DPA Auctions on this item, it has been photographed ONLY.



---

### #186 - 1990 International Flat Bed Water Truck (AL354)

1990 International Flat Bed Water Truck (AL354), model 7000, series 7100, DT 466 engine, 1250 gallon water tank, 9 ton 26001 gvwr, Honda motor and pump were just running and work great, Kawasaki motor and power washer, power washer wand and various tarps are included, the two speed rear end has never worked and seller never investigated why, it is in high and still has plenty of power even when full of water, shows 69000 miles. Notes: Item Location: Troy Mills, IA 52344 Equipment Sold "AS IS, WHERE IS": All equipment/property is sold "AS IS, WHERE IS" with no warranty or guarantees, expressed or implied, No operational assessments have been made by DPA Auctions on this item, it has been photographed ONLY.



---

### #187 - 2017 Ford F150 XLT (DL262)

2017 Ford F150 XLT (DL262), 3.5L V6 gas engine w/ Eco boost, automatic transmission, super crew, 4WD, AM/FM radio w/ CD player, Bluetooth, heat & A/C, power windows/locks/doors, 275/65R18 tires, 4 wheel ABS brakes, LineX bed liner, Retrax retractable bed cover, WeatherTech molded floor mats, leather seat covers, keyless entry, tow package, running boards, backup sensors, 6.5' bed, 3 year 36,000 bumper to bumper warranty, 5 year 60,000 drive train warranty, currently shows 15,317 miles. Notes: Vehicle is still in use, miles may increase slightly but will be less than 16,000 miles by day of auction. Item Location: Schell City, MO 64783 Equipment Sold "AS IS, WHERE IS": All equipment/property is sold "AS IS, WHERE IS" with no warranty or guarantees, expressed or implied, No operational assessments have been made by DPA Auctions on this item, it has been photographed ONLY.



---

### #188 - Agco 2150 Large Square Baler (TH280)

Agco 2150 Large Square Baler (TH280), Massey Ferguson/ Heston large square baler, model 2150 baler makes a 3x3 bale, unit has tandem axels, acid tank system, moisture sensor, 388 hours shown, has made 17,400 bales. Notes: Item Location: Central City, IA 52214 Equipment Sold "AS IS, WHERE IS": All equipment/property is sold "AS IS, WHERE IS" with no warranty or guarantees, expressed or implied, No operational assessments have been made by DPA Auctions on this item, it has been photographed ONLY.



---

### #189 - Case IH 8530 Square Baler (TH282)

Case IH 8530 Square Baler (TH282), in-line baler with 8511 bale thrower, pull type inline baler is in excellent condition, only made 600 bales last year, thrower has control bar to regulate speed of unit. Notes: This is an excellent unit, pics show it in working status in field. Item Location: Central City, IA 52214 Equipment Sold "AS IS, WHERE IS": All equipment/property is sold "AS IS, WHERE IS" with no warranty or guarantees, expressed or implied, No operational assessments have been made by DPA Auctions on this item, it has been photographed ONLY.



---

### #190 - Thrower Hayrack (TH283)

Thrower Hayrack (TH283), thrower style rack on John Deere gear. Notes: Item Location: Central City, IA 52214 Equipment Sold "AS IS, WHERE IS": All equipment/property is sold "AS IS, WHERE IS" with no warranty or guarantees, expressed or implied, No operational assessments have been made by DPA Auctions on this item, it has been photographed ONLY.



---

### #191 - Thrower Hayrack (TH284)

Thrower Hayrack (TH284), thrower style on John Deere gear, 9x16 with cage. Notes: Item Location: Central City, IA 52214 Equipment Sold "AS IS, WHERE IS": All equipment/property is sold "AS IS, WHERE IS" with no warranty or guarantees, expressed or implied, No operational assessments have been made by DPA Auctions on this item, it has been photographed ONLY.



---

### #192 - Thrower Hayrack (TH285)

Thrower Hayrack (TH285), thrower style on 1075 John Deere gear, thrower cage with side access on both sides, 8x16 wood floor. Notes: Item Location: Central City, IA 52214 Equipment Sold "AS IS, WHERE IS": All equipment/property is sold "AS IS, WHERE IS" with no warranty or guarantees, expressed or implied, No operational assessments have been made by DPA Auctions on this item, it has been photographed ONLY.



---

### #193 - Thrower Hayrack (TH286)

Thrower Hayrack (TH286), thrower style, on Kory 10 ton gear, 8x17 rack and extendable tongue. Notes: Item Location: Central City, IA 52214 Equipment Sold "AS IS, WHERE IS": All equipment/property is sold "AS IS, WHERE IS" with no warranty or guarantees, expressed or implied, No operational assessments have been made by DPA Auctions on this item, it has been photographed ONLY.



---

### #194 - Thrower Hayrack (TH287)

Thrower Hayrack (TH287), thrower style on Kory 10 ton gear, 8x20 bed and extendable tongue. Notes: Item Location: Central City, IA 52214 Equipment Sold "AS IS, WHERE IS": All equipment/property is sold "AS IS, WHERE IS" with no warranty or guarantees, expressed or implied, No operational assessments have been made by DPA Auctions on this item, it has been photographed ONLY.



---

### #195 - Columbia 9 Wheel Rake (TH288)

Columbia 9 Wheel Rake (TH288), pull type. Notes: Consigned by Airy Auctions 319-350-0474. Item Location: Central City, IA 52214 Equipment Sold "AS IS, WHERE IS": All equipment/property is sold "AS IS, WHERE IS" with no warranty or guarantees, expressed or implied, No operational assessments have been made by DPA Auctions on this item, it has been photographed ONLY.



---

### #196 - Vermeer MC1030 Hay Mower (TH289)

Vermeer MC1030 Hay Mower (TH289), 13ft cut, steel rollers, hydraulic swing. Notes: Item Location: Central City, IA 52214 Equipment Sold "AS IS, WHERE IS": All equipment/property is sold "AS IS, WHERE IS" with no warranty or guarantees, expressed or implied, No operational assessments have been made by DPA Auctions on this item, it has been photographed ONLY.



### #197 - John Deere 4440 Tractor (TH279)

John Deere 4440 Tractor (TH279), tractor has Deere 720 loader, tractor has 1500 hours m/l on in frame overhaul, double power beyond, 20.8-38 tires w/ axle mount duals, tires are 70%, 4 rib fronts at 75%, powershift, two outlets, loader joystick, 6' bucket and quick hitch, hour meter shows 1750 hours, tractor has about 7000 total hours. Notes: Runs and drives well and is being used currently in field. Consigned by Airy Auctions 319-350-0474. Item Location: Central City, IA 52214 Equipment Sold "AS IS, WHERE IS": All equipment/property is sold "AS IS, WHERE IS" with no warranty or guarantees, expressed or implied, No operational assessments have been made by DPA Auctions on this item, it has been photographed ONLY.



### #198 - JCB 3185 Fastrac Tractor (TH281)

JCB 3185 Fastrac Tractor (TH281), Cummins 5.9L engine, 3pt, air ride cab, front and rear hydraulics, full suspension, 2 or 4 drive, 40mph road speed, air system/ glad-hands and front weights. Notes: This tractor runs and drives very good. Item Location: Central City, IA 52214 Equipment Sold "AS IS, WHERE IS": All equipment/property is sold "AS IS, WHERE IS" with no warranty or guarantees, expressed or implied, No operational assessments have been made by DPA Auctions on this item, it has been photographed ONLY.



### #199 - New 2017 Tige R- 20 (KMK532)

New 2017 Tige R- 20 (KMK532), Tige R20, 20 ft. length, never seen the water, Taps3, color: white/black with metallic flake, inboard Raptor 360 motor, 308 hp., engine S/N: 203181- 1083, electric tower, up graded marine audio stereo with subwoofer, tower speakers, tower LED lights, Sea Blaze underwater lights, Boat Mate, tandem axle, custom trailer, ST205/ 75 R 14 tires. Notes: This is being sold on MSO. Item Location: Fremont, NE 68025 Equipment Sold "AS IS, WHERE IS": All equipment/property is sold "AS IS, WHERE IS" with no warranty or guarantees, expressed or implied, No operational assessments have been made by DPA Auctions on this item, it has been photographed ONLY.



### #200 - 1970 Lund S- 16 (KMK533)

1970 Lund S- 16 (KMK533), Lund boats, 16' long, model S-16, aluminum, 5 person capacity, single axle trailer, 4.80 - 12 tires, UFB152. Notes: No Title. Bill of sale will be provided. Boat and Trailer only. New paint job. Item Location: Fremont, NE 68025 Equipment Sold "AS IS, WHERE IS": All equipment/property is sold "AS IS, WHERE IS" with no warranty or guarantees, expressed or implied, No operational assessments have been made by DPA Auctions on this item, it has been photographed ONLY.



### #201 - 2007 Bass Tracker 1548 Grizzly (KMK534)

2007 Bass Tracker 1548 Grizzly (KMK534), Bass Tracker, 1548 Grizzly, color: Blind Duck camo, 2 seats, center storage box for poles and equipment, front mount for trolling motor with connections, 2007 Mercury Marine 15 ML / 4 stroke motor, motor S/N: 1B453352, Shorelander AR14/24C trailer, single axle, UFB277. Notes: Item Location: Fremont, NE 68025 Equipment Sold "AS IS, WHERE IS": All equipment/property is sold "AS IS, WHERE IS" with no warranty or guarantees, expressed or implied, No operational assessments have been made by DPA Auctions on this item, it has been photographed ONLY.



### #202 - 2002 George & Sons Boss- 10 (KMK535)

2002 George & Sons Boss- 10 (KMK535), mid size open boat, 10' length, 5.0 hp. Mercury outboard, weighs approx. 200 lbs. + motor, stainless steel safety handles, lifting rings, 3 storage lockers, closed cell foam flotation, boat will float upright even if completely filled with water, Deluxe Craft A-1415, 1995 homemade trailer, no tilt, Carlisle 4.80 - 12 tires, UFB151. Notes: No Title , Registration only. Item Location: Fremont, NE 68025 Equipment Sold "AS IS, WHERE IS": All equipment/property is sold "AS IS, WHERE IS" with no warranty or guarantees, expressed or implied, No operational assessments have been made by DPA Auctions on this item, it has been photographed ONLY.



### #203 - 2005 Tracker Grizzly 1654 SC (KMK536)

2005 Tracker Grizzly 1654 SC (KMK536), Tracker, Grizzly 1654 SC, 2 seats, Mercury T-30 ELPT, four stroke, Minn Kota Maxxum trolling motor, 55 lbs. thrust, foot control, XPS on board charger, live well, custom cover, Trailstar single axle trailer, Galva Shield, ST 175/ 80 D 13 tires, U1654, UFB156. Notes: Item Location: Fremont, NE 68025 Equipment Sold "AS IS, WHERE IS": All equipment/property is sold "AS IS, WHERE IS" with no warranty or guarantees, expressed or implied, No operational assessments have been made by DPA Auctions on this item, it has been photographed ONLY.



### #204 - 1996 Voyager John Boat (KMK537)

1996 Voyager John Boat (KMK537), 14' long, 1986 Mercury 20 hp. outboard motor, CMC power tilt & trim, MerControl, 3 seats, hummingbird fish finder, Motor Guide Tracker 28, Pro Series bow mount trolling motor with foot controls, rod storage, 1996 Shorelander trailer, single axle, 4.80-12 tires, UFB149. Notes: Trailer has registration but no title. Boat has title and registration. Item Location: Fremont, NE 68025 Equipment Sold "AS IS, WHERE IS": All equipment/property is sold "AS IS, WHERE IS" with no warranty or guarantees, expressed or implied, No operational assessments have been made by DPA Auctions on this item, it has been photographed ONLY.





### #205 - 1984 Smoker Craft Alaskan Deluxe (KMK538)

1984 Smoker Craft Alaskan Deluxe (KMK538), Smoker Craft, Alaskan Deluxe, 15' length, Johnson 25 hp. outboard motor, two seats, locking storage box in bow, Humminbird LCR 2000, Spartan sport 14', single axle trailer, UFB153. Notes: Item Location: Fremont, NE 68025 Equipment Sold "AS IS, WHERE IS": All equipment/property is sold "AS IS, WHERE IS" with no warranty or guarantees, expressed or implied, No operational assessments have been made by DPA Auctions on this item, it has been photographed ONLY.



### #206 - 2013 Heartland Gateway 3200 RS (PD784)

2013 Heartland Gateway 3200 RS (PD784), 37', 5th wheel RV, bought new end of 2015 from Countryside RV, GVW 14,000 lbs., auto leveling jacks, three (3) slide out units, sleeping capacity 4+, climate control, two (2) a/c units, separate a/c unit for bedroom, queen bed with underbed storage, dresser, wardrobe with sliding door, washer and dryer hook ups, full bath with tub/shower, porcelain toilet and sink, rear living area, slide out with theater seating, sofa, flat screen TV, Genesis DVD, CD, USB, BT, 3 zone surround sound, electric fireplace, keyless safety box behind TV panel, storage with queen air mattress behind fire place, kitchen has fridge/freezer, stovetop range, microwave, and double sink, caster center island, movable dining table with four (4) chairs, two (2) folding chairs behind the sofa, tons of storage inside and out, outside full length storage. Notes: This unit was delivered New to our climate/pest controlled warehouse and has not moved since. Used only while our house was being built. Single Owner. Item Location: Sigourney, IA 52591 Equipment Sold "AS IS, WHERE IS": All equipment/property is sold "AS IS, WHERE IS" with no warranty or guarantees, expressed or implied, No operational assessments have been made by DPA Auctions on this item, it has been photographed ONLY.



### #207 - Set of Fast Stainless Steel Saddle Tanks (PD785)

Set of Fast Stainless Steel Saddle Tanks (PD785), 950 Gallon Capacity, mounting brackets included, stored inside, fits John Deere 8000T, 8010T, 8020T, 8030T series track tractors (not RT series). Notes: Item Location: Morgan, MN 56266 Equipment Sold "AS IS, WHERE IS": All equipment/property is sold "AS IS, WHERE IS" with no warranty or guarantees, expressed or implied, No operational assessments have been made by DPA Auctions on this item, it has been photographed ONLY.



### #208 - Fast Mfg. 1,000 Gallon Three Wheel Cart (PD776)

Fast Mfg. 1,000 Gallon Three Wheel Cart (PD776), for side dressing, has a Raven pump and flow meter, 3 section controls on it, rear tires are 13.6-38, front tire is 14L-16.1 SL. Notes: Item Location: Morgan, MN 56266 Equipment Sold "AS IS, WHERE IS": All equipment/property is sold "AS IS, WHERE IS" with no warranty or guarantees, expressed or implied, No operational assessments have been made by DPA Auctions on this item, it has been photographed ONLY.



### #209 - 2008 Merritt Quickveyor (AL359)

2008 Merritt Quickveyor (AL359), 38.5x96x68, tandem axle, spring ride suspension, 11R22.5 tires, electric roll tarp, stainless steel conveyor system is the fastest on the market, converts to grain/commodity trailer in under 1 hour (dual purpose). Notes: Item Location: Watertown, SD 57201 Equipment Sold "AS IS, WHERE IS": All equipment/property is sold "AS IS, WHERE IS" with no warranty or guarantees, expressed or implied, No operational assessments have been made by DPA Auctions on this item, it has been photographed ONLY.



### #210 - Portable Ramp (PZ9213)

Portable Ramp (PZ9213), Portable forklift ramp, hydraulic hand pump to raise/lower height, wheels, hitch. Notes: Item Location: Audubon, IA 50025 Equipment Sold "AS IS, WHERE IS": All equipment/property is sold "AS IS, WHERE IS" with no warranty or guarantees, expressed or implied, No operational assessments have been made by DPA Auctions on this item, it has been photographed ONLY.



### #211 - 2008 40ft Mustang Trailer (MH277)

2008 40ft Mustang Trailer (MH277), 40 foot trailer with 35ft flat deck, 5ft dove tail and ramps, tandem axle, spring ride suspension, 14 ply 235/85R16 tires in great condition, newer brakes and bearings, new hitch recently put on, will pass DOT inspection, needs nothing and is ready to work, trailer was used to haul LTL freight, auto and equipment. Notes: Trailer will pass DOT inspection, needs nothing and is ready to work. Item Location: Omaha, NE 68144 Equipment Sold "AS IS, WHERE IS": All equipment/property is sold "AS IS, WHERE IS" with no warranty or guarantees, expressed or implied, No operational assessments have been made by DPA Auctions on this item, it has been photographed ONLY.



### #212 - Sears Table Saw (DR8513)

Sears Table Saw (DR8513), model 11329991, shop table saw, NO BLADE, cart underneath DOES NOT SELL. Notes: Item Location: Bedford, IA 50833 Equipment Sold "AS IS, WHERE IS": All equipment/property is sold "AS IS, WHERE IS" with no warranty or guarantees, expressed or implied, No operational assessments have been made by DPA Auctions on this item, it has been photographed ONLY.



### #213 - (23) 360 Y Drops (PD761)

(23) 360 Y Drops (PD761), full 60' set, very good condition, ready for the field, comes with 0.25 gpm orifice & variable rate orifice. Notes: Item Location: Utica, IL 61373 Equipment Sold "AS IS, WHERE IS": All equipment/property is sold "AS IS, WHERE IS" with no warranty or guarantees, expressed or implied, No operational assessments have been made by DPA Auctions on this item, it has been photographed ONLY.



### #214 - 2011 Kinze 3200 (TH290)

2011 Kinze 3200 (TH290), 12 row, 30" spacing, econo-fold planter, Martin row cleaners, Ag Leader harness, individual row shut offs, 1200 acres on discs and scrapers, hopper extensions, complete factory harness and KPM 3monitor comes with planter hours. Notes: This is an excellent unit, stored inside and is field ready. Consigned by Airy Auctions 319-350-0474 Item Location: Marion, IA 52302 Equipment Sold "AS IS, WHERE IS": All equipment/property is sold "AS IS, WHERE IS" with no warranty or guarantees, expressed or implied, No operational assessments have been made by DPA Auctions on this item, it has been photographed ONLY.



### #215 - 1958 Oliver 770 Tractor (AL349)

1958 Oliver 770 Tractor (AL349), 2 hyd, 540 PTO, less than 200 hours on an engine overhaul, power steering, like new front tires, 13.6 38" rear tires 35%. Notes: Item Location: Williamsburg, IA 52361 Equipment Sold "AS IS, WHERE IS": All equipment/property is sold "AS IS, WHERE IS" with no warranty or guarantees, expressed or implied, No operational assessments have been made by DPA Auctions on this item, it has been photographed ONLY.



### #216 - 2018 Mission Solar Panels (DR8733)

2018 Mission Solar Panels (DR8733), model MSE340S06J, 340 watt Mono 72 cell, made in USA, (26) panels in this lot, 25 year manufacture warranty, NEW UNUSED. Notes: Loadout IS available with flexible appointments. Item Location: Monroe, NE 68647 Equipment Sold "AS IS, WHERE IS": All equipment/property is sold "AS IS, WHERE IS" with no warranty or guarantees, expressed or implied, No operational assessments have been made by DPA Auctions on this item, it has been photographed ONLY.



### #217 - Metal Siding/Roofing (DR8687)

Metal Siding/Roofing (DR8687), NEW UNUSED #2 end runs (30) sheets, American made, Rustic Red color, 16' long X 36" overlap coverage, Premium Plus Panel Profile style, 29 gauge. ALWAYS stored inside. Meets all USA building material engineering codes for Tested Tolerances for wind & snow. USA stamped seal of approval documentation on all products. Notes: Loadout IS available with flexible appointments. Can also offer hardware, trim, corners at wholesale prices. Item Location: Monroe, NE 68647 Equipment Sold "AS IS, WHERE IS": All equipment/property is sold "AS IS, WHERE IS" with no warranty or guarantees, expressed or implied, No operational assessments have been made by DPA Auctions on this item, it has been photographed ONLY.



### #218 - Metal Siding/Roofing (DR8688)

Metal Siding/Roofing (DR8688), NEW UNUSED #2 end runs (30) sheets, American made, Rustic Red color, 16' long X 36" overlap coverage, Premium Plus Panel Profile style, 29 gauge. ALWAYS stored inside. Meets all USA building material engineering codes for Tested Tolerances for wind & snow. USA stamped seal of approval documentation on all products. Notes: Loadout IS available with flexible appointments. Can also offer hardware, trim, corners at wholesale prices. Item Location: Monroe, NE 68647 Equipment Sold "AS IS, WHERE IS": All equipment/property is sold "AS IS, WHERE IS" with no warranty or guarantees, expressed or implied, No operational assessments have been made by DPA Auctions on this item, it has been photographed ONLY.



### #219 - Metal Siding/Roofing (DR8689)

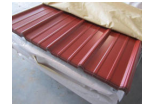
Metal Siding/Roofing (DR8689), NEW UNUSED #2 end runs (30) sheets, American made, Rustic Red color, 16' long X 36" overlap coverage, Premium Plus Panel Profile style, 29 gauge. ALWAYS stored inside. Meets all USA building material engineering codes for Tested Tolerances for wind & snow. USA stamped seal of approval documentation on all products. Notes: Loadout IS available with flexible appointments. Can also offer hardware, trim, corners at wholesale prices. Item Location: Monroe, NE 68647 Equipment Sold "AS IS, WHERE IS": All equipment/property is sold "AS IS, WHERE IS" with no warranty or guarantees, expressed or implied, No operational assessments have been made by DPA Auctions on this item, it has been photographed ONLY.



---

**#220 - Metal Siding/Roofing (DR8690)**

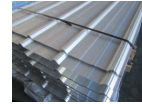
Metal Siding/Roofing (DR8690), NEW UNUSED #2 end runs (30) sheets, American made, Rustic Red color, 16' long X 36" overlap coverage, Premium Plus Panel Profile style, 29 gauge. ALWAYS stored inside. Meets all USA building material engineering codes for Tested Tolerances for wind & snow. USA stamped seal of approval documentation on all products. Notes: Loadout IS available with flexible appointments. Can also offer hardware, trim, corners at wholesale prices. Item Location: Monroe, NE 68647 Equipment Sold "AS IS, WHERE IS": All equipment/property is sold "AS IS, WHERE IS" with no warranty or guarantees, expressed or implied, No operational assessments have been made by DPA Auctions on this item, it has been photographed ONLY.



---

**#221 - Metal Siding/Roofing (DR8734)**

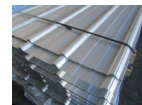
Metal Siding/Roofing (DR8734), NEW UNUSED (30) sheets, American made, Galvalume color, 16'-4" long X 36" overlap coverage, Premium Plus Panel Profile style, 29 gauge. ALWAYS stored inside. Meets all USA building material engineering codes for Tested Tolerances for wind & snow. USA stamped seal of approval documentation on all products. Notes: Loadout IS available with flexible appointments. Can also offer hardware, trim, corners at wholesale prices. Item Location: Monroe, NE 68647 Equipment Sold "AS IS, WHERE IS": All equipment/property is sold "AS IS, WHERE IS" with no warranty or guarantees, expressed or implied, No operational assessments have been made by DPA Auctions on this item, it has been photographed ONLY.



---

**#222 - Metal Siding/Roofing (DR8735)**

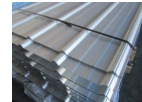
Metal Siding/Roofing (DR8735), NEW UNUSED (30) sheets, American made, Galvalume color, 16'-4" long X 36" overlap coverage, Premium Plus Panel Profile style, 29 gauge. ALWAYS stored inside. Meets all USA building material engineering codes for Tested Tolerances for wind & snow. USA stamped seal of approval documentation on all products. Notes: Loadout IS available with flexible appointments. Can also offer hardware, trim, corners at wholesale prices. Item Location: Monroe, NE 68647 Equipment Sold "AS IS, WHERE IS": All equipment/property is sold "AS IS, WHERE IS" with no warranty or guarantees, expressed or implied, No operational assessments have been made by DPA Auctions on this item, it has been photographed ONLY.



---

**#223 - Metal Siding/Roofing (DR8736)**

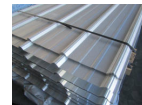
Metal Siding/Roofing (DR8736), NEW UNUSED (30) sheets, American made, Galvalume color, 16'-4" long X 36" overlap coverage, Premium Plus Panel Profile style, 29 gauge. ALWAYS stored inside. Meets all USA building material engineering codes for Tested Tolerances for wind & snow. USA stamped seal of approval documentation on all products. Notes: Loadout IS available with flexible appointments. Can also offer hardware, trim, corners at wholesale prices. Item Location: Monroe, NE 68647 Equipment Sold "AS IS, WHERE IS": All equipment/property is sold "AS IS, WHERE IS" with no warranty or guarantees, expressed or implied, No operational assessments have been made by DPA Auctions on this item, it has been photographed ONLY.



---

**#224 - Metal Siding/Roofing (DR8737)**

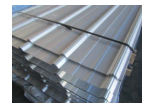
Metal Siding/Roofing (DR8737), NEW UNUSED (30) sheets, American made, Galvalume color, 16'-4" long X 36" overlap coverage, Premium Plus Panel Profile style, 29 gauge. ALWAYS stored inside. Meets all USA building material engineering codes for Tested Tolerances for wind & snow. USA stamped seal of approval documentation on all products. Notes: Loadout IS available with flexible appointments. Can also offer hardware, trim, corners at wholesale prices. Item Location: Monroe, NE 68647 Equipment Sold "AS IS, WHERE IS": All equipment/property is sold "AS IS, WHERE IS" with no warranty or guarantees, expressed or implied, No operational assessments have been made by DPA Auctions on this item, it has been photographed ONLY.



---

**#225 - Metal Siding/Roofing (DR8738)**

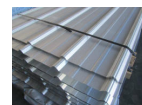
Metal Siding/Roofing (DR8738), NEW UNUSED (30) sheets, American made, Galvalume color, 16'-4" long X 36" overlap coverage, Premium Plus Panel Profile style, 29 gauge. ALWAYS stored inside. Meets all USA building material engineering codes for Tested Tolerances for wind & snow. USA stamped seal of approval documentation on all products. Notes: Loadout IS available with flexible appointments. Can also offer hardware, trim, corners at wholesale prices. Item Location: Monroe, NE 68647 Equipment Sold "AS IS, WHERE IS": All equipment/property is sold "AS IS, WHERE IS" with no warranty or guarantees, expressed or implied, No operational assessments have been made by DPA Auctions on this item, it has been photographed ONLY.



---

**#226 - Metal Siding/Roofing (DR8739)**

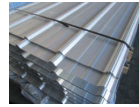
Metal Siding/Roofing (DR8739), NEW UNUSED (30) sheets, American made, Galvalume color, 16'-4" long X 36" overlap coverage, Premium Plus Panel Profile style, 29 gauge. ALWAYS stored inside. Meets all USA building material engineering codes for Tested Tolerances for wind & snow. USA stamped seal of approval documentation on all products. Notes: Loadout IS available with flexible appointments. Can also offer hardware, trim, corners at wholesale prices. Item Location: Monroe, NE 68647 Equipment Sold "AS IS, WHERE IS": All equipment/property is sold "AS IS, WHERE IS" with no warranty or guarantees, expressed or implied, No operational assessments have been made by DPA Auctions on this item, it has been photographed ONLY.



---

### #227 - Metal Siding/Roofing (DR8740)

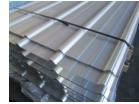
Metal Siding/Roofing (DR8740), NEW UNUSED (30) sheets, American made, Galvalume color, 16'-4" long X 36" overlap coverage, Premium Plus Panel Profile style, 29 gauge. ALWAYS stored inside. Meets all USA building material engineering codes for Tested Tolerances for wind & snow. USA stamped seal of approval documentation on all products. Notes: Loadout IS available with flexible appointments. Can also offer hardware, trim, corners at wholesale prices. Item Location: Monroe, NE 68647 Equipment Sold "AS IS, WHERE IS": All equipment/property is sold "AS IS, WHERE IS" with no warranty or guarantees, expressed or implied, No operational assessments have been made by DPA Auctions on this item, it has been photographed ONLY.



---

### #228 - Metal Siding/Roofing (DR8741)

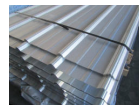
Metal Siding/Roofing (DR8741), NEW UNUSED (30) sheets, American made, Galvalume color, 16'-4" long X 36" overlap coverage, Premium Plus Panel Profile style, 29 gauge. ALWAYS stored inside. Meets all USA building material engineering codes for Tested Tolerances for wind & snow. USA stamped seal of approval documentation on all products. Notes: Loadout IS available with flexible appointments. Can also offer hardware, trim, corners at wholesale prices. Item Location: Monroe, NE 68647 Equipment Sold "AS IS, WHERE IS": All equipment/property is sold "AS IS, WHERE IS" with no warranty or guarantees, expressed or implied, No operational assessments have been made by DPA Auctions on this item, it has been photographed ONLY.



---

### #229 - Metal Siding/Roofing (DR8742)

Metal Siding/Roofing (DR8742), NEW UNUSED (30) sheets, American made, Galvalume color, 16'-4" long X 36" overlap coverage, Premium Plus Panel Profile style, 29 gauge. ALWAYS stored inside. Meets all USA building material engineering codes for Tested Tolerances for wind & snow. USA stamped seal of approval documentation on all products. Notes: Loadout IS available with flexible appointments. Can also offer hardware, trim, corners at wholesale prices. Item Location: Monroe, NE 68647 Equipment Sold "AS IS, WHERE IS": All equipment/property is sold "AS IS, WHERE IS" with no warranty or guarantees, expressed or implied, No operational assessments have been made by DPA Auctions on this item, it has been photographed ONLY.



---

### #230 - Metal Siding/Roofing (DR8743)

Metal Siding/Roofing (DR8743), NEW UNUSED (30) sheets, American made, Galvalume color, 16'-4" long X 36" overlap coverage, Premium Plus Panel Profile style, 29 gauge. ALWAYS stored inside. Meets all USA building material engineering codes for Tested Tolerances for wind & snow. USA stamped seal of approval documentation on all products. Notes: Loadout IS available with flexible appointments. Can also offer hardware, trim, corners at wholesale prices. Item Location: Monroe, NE 68647 Equipment Sold "AS IS, WHERE IS": All equipment/property is sold "AS IS, WHERE IS" with no warranty or guarantees, expressed or implied, No operational assessments have been made by DPA Auctions on this item, it has been photographed ONLY.

