

## Auction catalog

<b>Title</b>	Online Auction February 13, 2018 10AM Central
<b>Description</b>	The following line of Fertilizer, Farm Implement, Truck, Trailer & Construction Equipment will be sold online with the bidding ending on February 13, 2018. Location of the equipment is given. Bidding within the last minute before the closing of a lot will extend the bidding time by an additional minute. Be prepared to bid accordingly. For more information, contact Del Peterson & Associates: 419 West Judy Drive Fremont NE, 68025 Phone: 800-492-9090 or 402-721-4388 Fax: 402-721-4583 E-mail: auction@delpeterson.com
<b>Date</b>	Tue, Feb 13, 2018
<b>Starts at</b>	10:00 AM
<b>Address</b>	PO Box 654, Fremont, NE 68026 USA
<b>Categories</b>	

### #1 - Toledo Scale (DR8111)

Toledo Scale (DR8111), model 2017, 75 lbs capacity dial scale. Notes: Item Location: Warren, IL 61087 Equipment Sold "AS IS, WHERE IS": All equipment/property is sold "AS IS, WHERE IS" with no warranty or guarantees, expressed or implied, No operational assessments have been made by DPA Auctions on this item, it has been photographed ONLY.



### #2 - Toledo Scale (DR8112)

Toledo Scale (DR8112), model 2017, 75 lbs capacity dial scale. Notes: This scale will need a couple minor pieces to make it functional. Item Location: Warren, IL 61087 Equipment Sold "AS IS, WHERE IS": All equipment/property is sold "AS IS, WHERE IS" with no warranty or guarantees, expressed or implied, No operational assessments have been made by DPA Auctions on this item, it has been photographed ONLY.



### #3 - Union Special Sewer (DR8108)

Union Special Sewer (DR8108), Union Special sewing head, rolling table, roll tape machine. Notes: Item Location: Warren, IL 61087 Equipment Sold "AS IS, WHERE IS": All equipment/property is sold "AS IS, WHERE IS" with no warranty or guarantees, expressed or implied, No operational assessments have been made by DPA Auctions on this item, it has been photographed ONLY.



### #4 - Gustafson SS Treater (DR8108)

Gustafson SS Treater (DR8108), small batch treater, electric drive motor. Notes: Was all working fine when taken out. Item Location: Warren, IL 61087 Equipment Sold "AS IS, WHERE IS": All equipment/property is sold "AS IS, WHERE IS" with no warranty or guarantees, expressed or implied, No operational assessments have been made by DPA Auctions on this item, it has been photographed ONLY.



### #5 - Burrows Conveyor (DR8110)

Burrows Conveyor (DR8110), 18' X 12" portable bag conveyor, electric drive motor. Notes: Item Location: Warren, IL 61087 Equipment Sold "AS IS, WHERE IS": All equipment/property is sold "AS IS, WHERE IS" with no warranty or guarantees, expressed or implied, No operational assessments have been made by DPA Auctions on this item, it has been photographed ONLY.



### #6 - Bag Conveyor (DR8117)

Bag Conveyor (DR8117), 7.5' X 9" portable bag conveyor, electric motor, variable speed. Notes: Item Location: Warren, IL 61087 Equipment Sold "AS IS, WHERE IS": All equipment/property is sold "AS IS, WHERE IS" with no warranty or guarantees, expressed or implied, No operational assessments have been made by DPA Auctions on this item, it has been photographed ONLY.



### #7 - Conveyor (DR8122)

Conveyor (DR8122), 52' X 18.5" incline conveyor, does have belt. Notes: Item Location: Warren, IL 61087 Equipment Sold "AS IS, WHERE IS": All equipment/property is sold "AS IS, WHERE IS" with no warranty or guarantees, expressed or implied, No operational assessments have been made by DPA Auctions on this item, it has been photographed ONLY.



---

### #8 - Pipe Threader (DR8113)

Pipe Threader (DR8113), Toledo model 999 pipe threader on stand, drive shaft is TWISTED OFF the motor. Notes: Item Location: Warren, IL 61087 Equipment Sold "AS IS, WHERE IS": All equipment/property is sold "AS IS, WHERE IS" with no warranty or guarantees, expressed or implied, No operational assessments have been made by DPA Auctions on this item, it has been photographed ONLY.



---

### #9 - Hose Cutter (DR8114)

Hose Cutter (DR8114), stone hose cutter, electric drive motor. Notes: Item Location: Warren, IL 61087 Equipment Sold "AS IS, WHERE IS": All equipment/property is sold "AS IS, WHERE IS" with no warranty or guarantees, expressed or implied, No operational assessments have been made by DPA Auctions on this item, it has been photographed ONLY.



---

### #10 - Mig Lite Welder (DR8119)

Mig Lite Welder (DR8119), model 100 wire feed welder, 110 volt. Notes: Item Location: Warren, IL 61087 Equipment Sold "AS IS, WHERE IS": All equipment/property is sold "AS IS, WHERE IS" with no warranty or guarantees, expressed or implied, No operational assessments have been made by DPA Auctions on this item, it has been photographed ONLY.



---

### #11 - Campbell Hausfeld (DR8120)

Campbell Hausfeld (DR8120), airless paint sprayer, 110 volt, works great on thinner mixed products, not as well on thick mixtures. Notes: Item Location: Warren, IL 61087 Equipment Sold "AS IS, WHERE IS": All equipment/property is sold "AS IS, WHERE IS" with no warranty or guarantees, expressed or implied, No operational assessments have been made by DPA Auctions on this item, it has been photographed ONLY.



---

### #12 - Pool Lights (DR8115)

Pool Lights (DR8115), (12) swimming pool light, (4) transformers. Notes: Item Location: Warren, IL 61087 Equipment Sold "AS IS, WHERE IS": All equipment/property is sold "AS IS, WHERE IS" with no warranty or guarantees, expressed or implied, No operational assessments have been made by DPA Auctions on this item, it has been photographed ONLY.



---

### #13 - Bumper (DR8118)

Bumper (DR8118), cushion ag bumper. Notes: Item Location: Warren, IL 61087 Equipment Sold "AS IS, WHERE IS": All equipment/property is sold "AS IS, WHERE IS" with no warranty or guarantees, expressed or implied, No operational assessments have been made by DPA Auctions on this item, it has been photographed ONLY.



---

### #14 - Phone System (DR8126)

Phone System (DR8126), (8) phones expandable to 24, power box included. Notes: Item Location: Warren, IL 61087 Equipment Sold "AS IS, WHERE IS": All equipment/property is sold "AS IS, WHERE IS" with no warranty or guarantees, expressed or implied, No operational assessments have been made by DPA Auctions on this item, it has been photographed ONLY.



---

### #15 - Paint/Stain (PZ8184)

Paint/Stain (PZ8184), various sizes/colors, interior/exterior paint/stain. Notes: Seller has detailed breakdown of all paint/stain contents that is approx. 11 pages long, please contact seller for detailed list. Item Location: Vandalia, IL 62471 Equipment Sold "AS IS, WHERE IS": All equipment/property is sold "AS IS, WHERE IS" with no warranty or guarantees, expressed or implied, No operational assessments have been made by DPA Auctions on this item, it has been photographed ONLY.



---

### #16 - Various Fuel/Hydraulic Filters (PZ8185)

Various Fuel/Hydraulic Filters (PZ8185).LF3883 x 12LF1022 x 12LF3443 x 13LF701 x 11FF5264 x 11LF680 x 5FS1251 x 2LF3970 x 6LF3959 x 8LF3374 x 3LF691A x 2LF3639 x 2FF815 x 3LF3328 x 13HF6710 x 2LF796 x 8LF3945 x 221085 x 2HF6563 x 4LF16243 x 6FS1280 x 5FF105c x 3FS19700 x 3LF3567 x 4LF563 x 2AF26337 x 2AF1733KM x 373458 x 4AF25259 x 1AF26336 x 26142 x 13320 87682985 x 1AG523347 x 1LF16043 x 6 Notes: Item Location: Vandalia, IL 62471 Equipment Sold "AS IS, WHERE IS": All equipment/property is sold "AS IS, WHERE IS" with no warranty or guarantees, expressed or implied, No operational assessments have been made by DPA Auctions on this item, it has been photographed ONLY.



---

**#17 - (1) One Goodyear 54x31.00-26 Tire (AL224)**

(1) One Goodyear 54x31.00-26 Tire (AL224). Notes: Item Location: Princeton, IL 61356 Equipment Sold "AS IS, WHERE IS": All equipment/property is sold "AS IS, WHERE IS" with no warranty or guarantees, expressed or implied, No operational assessments have been made by DPA Auctions on this item, it has been photographed ONLY.



---

**#18 - (2) Two Firestone 66x43.00-25 Tires (AL225)**

(2) Two Firestone 66x43.00-25 Tires (AL225). Notes: Item Location: Princeton, IL 61356 Equipment Sold "AS IS, WHERE IS": All equipment/property is sold "AS IS, WHERE IS" with no warranty or guarantees, expressed or implied, No operational assessments have been made by DPA Auctions on this item, it has been photographed ONLY.



---

**#19 - N-Serve (DR7966)**

N-Serve (DR7966), Nh3 injecto-meter on stand, electric drive pump. Notes: Item Location: Elk Mound, WI 54739 Equipment Sold "AS IS, WHERE IS": All equipment/property is sold "AS IS, WHERE IS" with no warranty or guarantees, expressed or implied, No operational assessments have been made by DPA Auctions on this item, it has been photographed ONLY.



---

**#20 - N-Serve (DR7967)**

N-Serve (DR7967), Nh3 injecto-meter, electric drive pump. Notes: Item Location: Elk Mound, WI 54739 Equipment Sold "AS IS, WHERE IS": All equipment/property is sold "AS IS, WHERE IS" with no warranty or guarantees, expressed or implied, No operational assessments have been made by DPA Auctions on this item, it has been photographed ONLY.



---

**#21 - (2) Ravens (DR7969)**

(2) Ravens (DR7969), (2) model SCS4000 controller heads. Notes: Item Location: Elk Mound, WI 54739 Equipment Sold "AS IS, WHERE IS": All equipment/property is sold "AS IS, WHERE IS" with no warranty or guarantees, expressed or implied, No operational assessments have been made by DPA Auctions on this item, it has been photographed ONLY.



---

**#22 - (2) Ravens (DR7970)**

(2) Ravens (DR7970) (2) model 441 controller heads. Notes: Item Location: Elk Mound, WI 54739 Equipment Sold "AS IS, WHERE IS": All equipment/property is sold "AS IS, WHERE IS" with no warranty or guarantees, expressed or implied, No operational assessments have been made by DPA Auctions on this item, it has been photographed ONLY.



---

**#23 - (2) Ravens (DR7971)**

(2) Ravens (DR7971) (2) model 441 controller heads, Raven Starlink box. Notes: Item Location: Elk Mound, WI 54739 Equipment Sold "AS IS, WHERE IS": All equipment/property is sold "AS IS, WHERE IS" with no warranty or guarantees, expressed or implied, No operational assessments have been made by DPA Auctions on this item, it has been photographed ONLY.



---

**#24 - Light Bars (DR7972)**

Light Bars (DR7972), Trimble swathing light bar, EZ Steer swathing bar and globe. Notes: Item Location: Elk Mound, WI 54739 Equipment Sold "AS IS, WHERE IS": All equipment/property is sold "AS IS, WHERE IS" with no warranty or guarantees, expressed or implied, No operational assessments have been made by DPA Auctions on this item, it has been photographed ONLY.



---

**#25 - 2005 B&B Sprayer Trailer (DR7968)**

2005 B&B Sprayer Trailer (DR7968), 28' 6" overall length, tandem axle dual wheeled gear, 20' rear fold down ramps, air brakes, D tie down rings, pintle hitch, 30,000lb trailer, 215/75R17.5 tires. Notes: Was used to haul a Case 3200 Sprayer. Item Location: Elk Mound, WI 54739 Equipment Sold "AS IS, WHERE IS": All equipment/property is sold "AS IS, WHERE IS" with no warranty or guarantees, expressed or implied, No operational assessments have been made by DPA Auctions on this item, it has been photographed ONLY.



---

### #26 - DMI 5250 (DR8017)

DMI 5250 (DR8017), 47.5" 19 knife pul type tool bar, walking tandem axle, walking tandem gauge wheels, Raven cooler, wired for Raven controller, front coulters. Notes: Item Location: Owatonna, MN 55060 Equipment Sold "AS IS, WHERE IS": All equipment/property is sold "AS IS, WHERE IS" with no warranty or guarantees, expressed or implied, No operational assessments have been made by DPA Auctions on this item, it has been photographed ONLY.



---

### #27 - John Deere RM Cultivator (DR8013)

John Deere RM Cultivator (DR8013), 12 row 30" cultivator, rolling shields, 5 sweep, 3 point mount. Notes: Item Location: Owatonna, MN 55060 Equipment Sold "AS IS, WHERE IS": All equipment/property is sold "AS IS, WHERE IS" with no warranty or guarantees, expressed or implied, No operational assessments have been made by DPA Auctions on this item, it has been photographed ONLY.



---

### #28 - Side Dress Bar (DR8016)

Side Dress Bar (DR8016), 30' 11 knife side dress bar, 3 point mount. Notes: Item Location: Owatonna, MN 55060 Equipment Sold "AS IS, WHERE IS": All equipment/property is sold "AS IS, WHERE IS" with no warranty or guarantees, expressed or implied, No operational assessments have been made by DPA Auctions on this item, it has been photographed ONLY.



---

### #29 - L&D Commodity Cart (DR8022)

L&D Commodity Cart (DR8022), 500 gallon poly tank, pull between gear, sight gauge. Notes: Item Location: Owatonna, MN 55060 Equipment Sold "AS IS, WHERE IS": All equipment/property is sold "AS IS, WHERE IS" with no warranty or guarantees, expressed or implied, No operational assessments have been made by DPA Auctions on this item, it has been photographed ONLY.



---

### #30 - John Deere Boxes (DR8014)

John Deere Boxes (DR8014), (16) 1.6 bushel seed hoppers, NO METERS. Notes: Item Location: Owatonna, MN 55060 Equipment Sold "AS IS, WHERE IS": All equipment/property is sold "AS IS, WHERE IS" with no warranty or guarantees, expressed or implied, No operational assessments have been made by DPA Auctions on this item, it has been photographed ONLY.



---

### #31 - Insecticide Boxes (DR8015)

Insecticide Boxes (DR8015), (16) insecticide boxes for John Deere planter, adjustable meters. Notes: Item Location: Owatonna, MN 55060 Equipment Sold "AS IS, WHERE IS": All equipment/property is sold "AS IS, WHERE IS" with no warranty or guarantees, expressed or implied, No operational assessments have been made by DPA Auctions on this item, it has been photographed ONLY.



---

### #32 - Poly Tank (DR7943)

Poly Tank (DR7943), NEW NEVER USED 1200 gallon vertical liquid tank. Notes: Item Location: Sleepy Eye, MN 56085 Equipment Sold "AS IS, WHERE IS": All equipment/property is sold "AS IS, WHERE IS" with no warranty or guarantees, expressed or implied, No operational assessments have been made by DPA Auctions on this item, it has been photographed ONLY.



---

### #33 - M&W Mower (DR7942)

M&W Mower (DR7942), model GM72, 3 point mount gyro mower, 540 PTO drive. Notes: Item Location: Sleepy Eye, MN 56085 Equipment Sold "AS IS, WHERE IS": All equipment/property is sold "AS IS, WHERE IS" with no warranty or guarantees, expressed or implied, No operational assessments have been made by DPA Auctions on this item, it has been photographed ONLY.



---

### #34 - Tool Shop Compressor (DR7944)

Tool Shop Compressor (DR7944), 2 hp 4 gallon portable air compressor, adjustable line control. Notes: Item Location: Sleepy Eye, MN 56085 Equipment Sold "AS IS, WHERE IS": All equipment/property is sold "AS IS, WHERE IS" with no warranty or guarantees, expressed or implied, No operational assessments have been made by DPA Auctions on this item, it has been photographed ONLY.





### #35 - Floater Tire (DR7940)

Floater Tire (DR7940), 66X43.00-25 floater tire, good tire and good bead. Notes: Item Location: Sleepy Eye, MN 56085 Equipment Sold "AS IS, WHERE IS": All equipment/property is sold "AS IS, WHERE IS" with no warranty or guarantees, expressed or implied, No operational assessments have been made by DPA Auctions on this item, it has been photographed ONLY.



### #36 - Floater Tire (DR7941)

Floater Tire (DR7941), 48X31.00-20 floater tire, good tire and good bead. Notes: Item Location: Sleepy Eye, MN 56085 Equipment Sold "AS IS, WHERE IS": All equipment/property is sold "AS IS, WHERE IS" with no warranty or guarantees, expressed or implied, No operational assessments have been made by DPA Auctions on this item, it has been photographed ONLY.



### #37 - 1995 East End Dump (DR7938)

1995 East End Dump (DR7938), 33.5' frame type aluminum end dump, tandem axle w/air lift tag axle, floor liner, rear grain gate (needs handle), roll back tarp, 295/75R22.5 tires, all aluminum wheels. Notes: Item Location: Sleepy Eye, MN 56085 Equipment Sold "AS IS, WHERE IS": All equipment/property is sold "AS IS, WHERE IS" with no warranty or guarantees, expressed or implied, No operational assessments have been made by DPA Auctions on this item, it has been photographed ONLY.



### #38 - 1998 East End Dump (DR6507)

1998 East End Dump (DR6507), 33.5' frame type aluminum end dump, tandem axle w/air lift tag axle, floor liner, roll back tarp, 295/75R22.5 tires, all aluminum wheels. Notes: Item Location: Sleepy Eye, MN 56085 Equipment Sold "AS IS, WHERE IS": All equipment/property is sold "AS IS, WHERE IS" with no warranty or guarantees, expressed or implied, No operational assessments have been made by DPA Auctions on this item, it has been photographed ONLY.



### #39 - 2002 XL Drop Deck (DR6511)

2002 XL Drop Deck (DR6511), model 70RG, 48' w/20.5' well, triple axle, rear beaver tail, fold down rear ramps, side D rings, 255/70R22.5 tires, air ride suspension. Notes: DOT is current. Item Location: Sleepy Eye, MN 56085 Equipment Sold "AS IS, WHERE IS": All equipment/property is sold "AS IS, WHERE IS" with no warranty or guarantees, expressed or implied, No operational assessments have been made by DPA Auctions on this item, it has been photographed ONLY.



### #40 - 2004 Peterbilt 379 (DR7937, Unit 22)

2004 Peterbilt 379 (DR7937, Unit 22), Cat C-15 single turbo diesel engine, 18 speed transmission, tandem axle full screw, factory day cab, Pete Air Trac suspension, air dump valve, engine brake, dual line wet kit, dual chrome stacks, dual chrome air breathers, dual aluminum fuel tanks, air slide 5th wheel plate, cruise control, 22.5 tires, all aluminum wheels, shows 117,984 miles. Notes: Item Location: Sleepy Eye, MN 56085 Equipment Sold "AS IS, WHERE IS": All equipment/property is sold "AS IS, WHERE IS" with no warranty or guarantees, expressed or implied, No operational assessments have been made by DPA Auctions on this item, it has been photographed ONLY.



### #41 - 2000 Peterbilt 379 (DR6506, Truck 01)

2000 Peterbilt 379 (DR6506, Truck 01), Cat E model 550 hp diesel engine, 18 speed transmission, tandem axle full screw, factory day cab, Pete Air Trac suspension, air dump valve, engine brake, dual line wet kit, dual chrome stacks, dual chrome air breathers, stainless steel drop visor, dual aluminum fuel tanks, Minimizer double hump fenders, 5th wheel plate, cruise control, 24.5 tires, outside aluminum wheels, shows 982,552 miles. Notes: Truck has been overhauled w/paperwork. Item Location: Sleepy Eye, MN 56085 Equipment Sold "AS IS, WHERE IS": All equipment/property is sold "AS IS, WHERE IS" with no warranty or guarantees, expressed or implied, No operational assessments have been made by DPA Auctions on this item, it has been photographed ONLY.



### #42 - 2004 Chevy 2500 (DR7339)

2004 Chevy 2500 (DR7339), 6.0 liter gas engine, automatic transmission, crew cab, 4X4, chrome nerf bars, rear receiver hitch, power windows & locks, AM/FM CD radio, air conditioning, 265/75R16 tires, shows 164, 928 miles. Notes: Has slight right rear fender damage. NEW transfer case literally only 25 miles. Item Location: Sleepy Eye, MN 56085 Equipment Sold "AS IS, WHERE IS": All equipment/property is sold "AS IS, WHERE IS" with no warranty or guarantees, expressed or implied, No operational assessments have been made by DPA Auctions on this item, it has been photographed ONLY.



### #43 - Radar Gun (DR8023)

Radar Gun (DR8023) came off John Deere tractor. Notes: Item Location: Edgerton, MN 56128 Equipment Sold "AS IS, WHERE IS": All equipment/property is sold "AS IS, WHERE IS" with no warranty or guarantees, expressed or implied, No operational assessments have been made by DPA Auctions on this item, it has been photographed ONLY.



### #44 - 1992 Fruehauf, (DR8019, Unit 6537)

1992 Fruehauf, (DR8019, Unit 6537), 48' dry van trailer, sliding tandem axle, spring ride suspension, rear roll up door, light panel roof. Notes: License & DOT are current. Trailer was used until November 2017. Item Location: Mayfield, KY 42066 Equipment Sold "AS IS, WHERE IS": All equipment/property is sold "AS IS, WHERE IS" with no warranty or guarantees, expressed or implied, No operational assessments have been made by DPA Auctions on this item, it has been photographed ONLY.



### #45 - 1999 Great Dane, (DR8020, Unit 10291)

1999 Great Dane, (DR8020, Unit 10291), 48' dry van trailer, sliding tandem axle, NEW slider kit, air ride suspension, NEW rear cargo doors, light panel roof. Notes: License & DOT are current. Trailer was used until November 2017. Item Location: Mayfield, KY 42066 Equipment Sold "AS IS, WHERE IS": All equipment/property is sold "AS IS, WHERE IS" with no warranty or guarantees, expressed or implied, No operational assessments have been made by DPA Auctions on this item, it has been photographed ONLY.



### #47 - Parker Wagon (NP6170)

Parker Wagon (NP6170), 300 bushel capacity, extendable tongue, heavy duty tires, roll tarp, Yetter Seed Jet II, self contained. Notes: Item Location: Crawfordsville, IN 47933 Equipment Sold "AS IS, WHERE IS": All equipment/property is sold "AS IS, WHERE IS" with no warranty or guarantees, expressed or implied, No operational assessments have been made by DPA Auctions on this item, it has been photographed ONLY.



### #48 - 2010 Layco Dry Blender (NJP498)

2010 Layco Dry Blender (NJP498), 10 ton capacity, stainless steel dry blender, stainless steel hopper, top drive electric motor with new gear box, top cover, load sensors and scale, 38' stationary stainless steel conveyor, cleated belt, electric drive motor. Notes: This item must be removed by March 18, 2018, no exceptions. Dismantle, removal and transportation is that expense, risk and liability of the buyer. Item Location: Morrowville, KS 66958 Equipment Sold "AS IS, WHERE IS": All equipment/property is sold "AS IS, WHERE IS" with no warranty or guarantees, expressed or implied, No operational assessments have been made by DPA Auctions on this item, it has been photographed ONLY.



### #49 - KSI Portable SS Conveyor (NJP499)

KSI Portable Conveyor (NJP499), Model 161037, 37' length, stainless steel, paddle belt, bottom hopper, top drive electric motor. Notes: Item Location: Morrowville, KS 66958 Equipment Sold "AS IS, WHERE IS": All equipment/property is sold "AS IS, WHERE IS" with no warranty or guarantees, expressed or implied, No operational assessments have been made by DPA Auctions on this item, it has been photographed ONLY.



### #50 - KSI Portable SS Undercar Conveyor (NJP500)

KSI Portable Undercar Conveyor (NJP500), Model 16UC, stainless steel, Baldor 3 phase 5HP electric motor, collapsible hopper. Notes: Item Location: Morrowville, KS 66958 Equipment Sold "AS IS, WHERE IS": All equipment/property is sold "AS IS, WHERE IS" with no warranty or guarantees, expressed or implied, No operational assessments have been made by DPA Auctions on this item, it has been photographed ONLY.



### #51 - Komatsu 25 Forklift (NJP501, Unit 78497)

Komatsu 25 Forklift (NJP501, Unit 78497), LP gas engine, shuttle shift drive, 3 stage mast, forks, approx. 4000lb capacity, pneumatic tires, shows 2,944 hours. Notes: Item Location: Morrowville, KS 66958 Equipment Sold "AS IS, WHERE IS": All equipment/property is sold "AS IS, WHERE IS" with no warranty or guarantees, expressed or implied, No operational assessments have been made by DPA Auctions on this item, it has been photographed ONLY.



### #52 - 2009 CaseIH Titan 4520 Dry Floater (PZ8186, Unit AV-051)

2009 CaseIH Titan 4520 Dry Floater (PZ8186, Unit AV-051), 8.9 diesel engine, Allison automatic transmission, air conditioning, heat, Am/Fm CD stereo, CaseIH 810 Flex Air dry air flow system, 75' boom, Alliance 750/45R26.5 front tires, Alliance 1050/50R32 rear tires, Raven monitor, shows 9115 hours. Notes: Item Location: Edison, NE 68936 Equipment Sold "AS IS, WHERE IS": All equipment/property is sold "AS IS, WHERE IS" with no warranty or guarantees, expressed or implied, No operational assessments have been made by DPA Auctions on this item, it has been photographed ONLY.



### #53 - 1978 Rolls Royce (DR7927)

1978 Rolls Royce (DR7927), Touch of Gold edition, gas engine, automatic transmission, leather interior, power windows & locks, AM/FM cassette radio, air conditioning, 235/70R15 tires, shows 68,541 miles. Notes: Hydraulic brake sensors come on once in awhile. Item Location: Oakland, NE 68045 Equipment Sold "AS IS, WHERE IS": All equipment/property is sold "AS IS, WHERE IS" with no warranty or guarantees, expressed or implied, No operational assessments have been made by DPA Auctions on this item, it has been photographed ONLY.



### #54 - 2015 Bayer Seed Treater (DR7934)

2015 Bayer Seed Treater (DR7934), model RH 2000 treater, includes treater stands & legs, (6) chemical pump stands, seed wheel w/inlet hopper, power & control panels, NO CONVEYORS. Notes: Treater was purchased NEW and only used 1 season. Item Location: Hamilton, MI 49419 Equipment Sold "AS IS, WHERE IS": All equipment/property is sold "AS IS, WHERE IS" with no warranty or guarantees, expressed or implied, No operational assessments have been made by DPA Auctions on this item, it has been photographed ONLY.



### #55 - 2005 Terra Gator 8144 (DR7928, Unit 33888)

2005 Terra Gator 8144 (DR7928, Unit 33888), John Deere diesel engine, Terra Shift transmission, 4X4, Ag Chem Air Spreader box, 70' booms, foam markers, stainless steel foam tank, electric roll tarp, Falcon II controller, Raven light bar swathing, rear view camera, cab heat/air conditioning, AM/FM cassette radio, shows 4939 hours, 64,772 miles. Notes: Very clean well maintained machine. Item Location: Centerville, SD 57014 Equipment Sold "AS IS, WHERE IS": All equipment/property is sold "AS IS, WHERE IS" with no warranty or guarantees, expressed or implied, No operational assessments have been made by DPA Auctions on this item, it has been photographed ONLY.



### #56 - 1999 Fontaine Infinity (DR7932, Unit 00439)

1999 Fontaine Infinity (DR7932, Unit 00439), 48' flatbed, spread axle, air ride suspension, (2) 2500 crown poly liquid tanks, Honda gas engine w/electric start, 3" pump, poly chemical inductor, 24.5 tires, all aluminum wheels. Notes: PLEASE ALLOW AT LEAST 60 DAYS FOR TITLE TRANSFER. Item Location: Meckling, SD 57069 Equipment Sold "AS IS, WHERE IS": All equipment/property is sold "AS IS, WHERE IS" with no warranty or guarantees, expressed or implied, No operational assessments have been made by DPA Auctions on this item, it has been photographed ONLY.



### #57 - Clipper Super 29A (DR7935)

Clipper Super 29A (DR7935), 4 screens included for rye & similar small grains, loading available. Delivery is possible for extra charge from Lancaster call for details. Notes: Item Location: Lancaster, WI 53813 Equipment Sold "AS IS, WHERE IS": All equipment/property is sold "AS IS, WHERE IS" with no warranty or guarantees, expressed or implied, No operational assessments have been made by DPA Auctions on this item, it has been photographed ONLY.



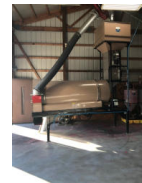
### #58 - 2005 Kenworth T300 Feed Truck (TR4340)

2005 Kenworth T300 Feed Truck (TR4340), diesel engine, automatic transmission, AM/FM radio, Heat/AC, with a Sudenga ST918F83 feed body. Vin #2NKML29X55M073712. 459,943 miles, However the diesel engine was just overhauled by Advanced Fleet Services of ND Inc. (Invoices Available). of Bismarck, ND. It has about 10,000 miles on the overhaul. Notes: Truck is Salvage. Item Location: Streeter, ND 58483 Equipment Sold "AS IS, WHERE IS": All equipment/property is sold "AS IS, WHERE IS" with no warranty or guarantees, expressed or implied, No operational assessments have been made by DPA Auctions on this item, it has been photographed ONLY.



### #59 - 2010 Gustafson RH2000 Seed Treater (PZ8152)

2010 Gustafson RH2000 Seed Treater (PZ8152), 2010 Gustafson RH2000 seed treater with 1 pump stand, Treater includes: treater stand and legs, drum drive motor, AC Tech control panel, rotary volumetric seed wheel, 6 port manifold, soft start & variable speed drum with reverse, atomizer & motor, seed wheel & motor, seed hopper above treater (approx. 20 bu), high & low level sensors on hopper, side discharge chute, side inlet for bypass, stainless steel curtain around atomizer for easy clean-out, quick disconnect seed chute for easy clean out, 1 - 60 gallon poly surry tank, hi-rate IP pump, flow meter. Notes: Pump/seed wheel control panel not included. Always stored indoors and well maintained, excellent condition. Item Location: Versailles, IN 47042 Equipment Sold "AS IS, WHERE IS": All equipment/property is sold "AS IS, WHERE IS" with no warranty or guarantees, expressed or implied, No operational assessments have been made by DPA Auctions on this item, it has been photographed ONLY.



### #60 - 2010 Terra Gator 8203 Liquid Floater (PZ8198, Unit 17601)

2010 Terra Gator 8203 Liquid Floater (PZ8198, Unit 17601), Cat C-9 diesel engine, Terra Shift Powershift transmission, air conditioning, heat, Am/Fm CD AUX stereo, 1800 gallon stainless steel liquid system, Benson 60/85" boom, 30"/60" nozzle spacing, foam marker, stainless steel foam marker tank, 120 gallon top poly rinse tank, 1000/50R25 tires, front @ 30%, rear @ 50%, Raven Viper Pro, Raven SmarTrax autosteer, shows 3674 hours. Notes: Item Location: Dwight, IL 60420 Equipment Sold "AS IS, WHERE IS": All equipment/property is sold "AS IS, WHERE IS" with no warranty or guarantees, expressed or implied, No operational assessments have been made by DPA Auctions on this item, it has been photographed ONLY.



### #60A - 2003 Ford F-150 XLT (TR4051)

2003 Ford F-150 XLT (TR4051), V8 gas engine, automatic transmission, 4x4, heat/AC, AM/FM radio, CD, Topper, 4 door super crew, nerf bars, bed liner, cruise control, power windows and power locks, 192,194 miles. Notes: Item Location: Fremont, NE 68025 Equipment Sold "AS IS, WHERE IS": All equipment/property is sold "AS IS, WHERE IS" with no warranty or guarantees, expressed or implied, No operational assessments have been made by DPA Auctions on this item, it has been photographed ONLY.



### #61 - DMI 5310 Tool Bar (PZ8200)

DMI 5310 Tool Bar (PZ8200), DMI 5310 16 knife pull type tool bar, coulters, 18" notched double disc sealers, mole knives, Hiniker monitor, hydraulic wings, walking tandems, walking tandems on wings, flotation tires, rear hitch. Notes: Item Location: Dwight, IL 60420 Equipment Sold "AS IS, WHERE IS": All equipment/property is sold "AS IS, WHERE IS" with no warranty or guarantees, expressed or implied, No operational assessments have been made by DPA Auctions on this item, it has been photographed ONLY.



### #62 - 2007 CaseIH SPX4420 Sprayer (PZ8191, Unit AV-039)

2007 CaseIH SPX4420 Sprayer (PZ8191, Unit AV-039), diesel engine, hydrostatic transmission, air conditioning, heat, Am/Fm CD stereo, 1200 gallon stainless steel liquid system, 90' boom, foam marker, poly foam marker tank, top poly rinse tank, stainless steel chemical inductor, Good Year 380/90R46 front tires, Firestone 380/90R46 rear tires, Raven SCS4600 monitor, Raven SmarTrax, Raven Envizio Pro, shows 4730 hours (with 660 previous hours so 5390 total hours). Notes: Item Location: Edison, NE 68936 Equipment Sold "AS IS, WHERE IS": All equipment/property is sold "AS IS, WHERE IS" with no warranty or guarantees, expressed or implied, No operational assessments have been made by DPA Auctions on this item, it has been photographed ONLY.



### #64 - Ray Man Field Charger Tender Box (NP6181)

Ray Man Field Charger Tender Box (NP6181), Model 16CH11FB, 16 ton capacity, 4 compartment, overhead auger. Notes: Tender box ONLY, truck DOES NOT sell with this lot. Tender box was involved in an accident, for operational condition and integrity of the box, please contact the seller. Item Location: Clarence, IA 52216 Equipment Sold "AS IS, WHERE IS": All equipment/property is sold "AS IS, WHERE IS" with no warranty or guarantees, expressed or implied, No operational assessments have been made by DPA Auctions on this item, it has been photographed ONLY.



### #65 - Snyder Cone Bottom Poly Liquid Tank (NP5536)

Snyder Cone Bottom Poly Liquid Tank (NP5536), approx. 10,000 gallon capacity, metal stand. Notes: Dismantle, removal and transportation is at the expense, risk and liability of the buyer. Item Location: Kearney, NE 68845 Equipment Sold "AS IS, WHERE IS": All equipment/property is sold "AS IS, WHERE IS" with no warranty or guarantees, expressed or implied, No operational assessments have been made by DPA Auctions on this item, it has been photographed ONLY.



### #66 - 2008 IHC 4200 Liquid Floater (PZ8055)

2008 IHC 4200 Liquid Floater (PZ8055), VT365 260 hp diesel engine, Allison 2500RDS automatic transmission, air conditioning, heat, Am/Fm CD stereo, cruise control, 2007 Stahly 800 gallon stainless steel liquid system, 65' boom, foam marker, LandMark foam marking system, hydraulic pump drives off crankshaft, 16,000 LB front axle, 23,000 LB rear axle, Good Year Dyna Torque 385/85R34 tires excellent condition, Raven SCS4000 monitor, Trimble lightbar, shows 4129 hours, 41,513 miles. Notes: Item Location: Sutter, IL 62373 Equipment Sold "AS IS, WHERE IS": All equipment/property is sold "AS IS, WHERE IS" with no warranty or guarantees, expressed or implied, No operational assessments have been made by DPA Auctions on this item, it has been photographed ONLY.



### #67 - DMI 4250 Tool Bar (PZ8267, Unit 26239)

DMI 4250 Tool Bar (PZ8267, Unit 26239), DMI 4250 15 knife pull type tool bar, coulters, double disc sealers, Dual Raven Super coolers, hydraulic wings, walking tandems, 11L-15 flotation tires, rear hitch, Raven SCS440 monitor. Notes: Hydraulic wing broke. Item Location: Walnut, IL 61376 Equipment Sold "AS IS, WHERE IS": All equipment/property is sold "AS IS, WHERE IS" with no warranty or guarantees, expressed or implied, No operational assessments have been made by DPA Auctions on this item, it has been photographed ONLY.



### #68 - DMI 5300 Tool Bar (PZ8268, Unit 26241)

DMI 5300 Tool Bar (PZ8268, Unit 26241), DMI 5300 17 knife pull type tool bar, coulters, double disc sealers, Dual Raven Super coolers, hydraulic wings, walking tandems, 11L-15 flotation tires, rear hitch, Raven SCS 440 monitor. Notes: Item Location: Walnut, IL 61376 Equipment Sold "AS IS, WHERE IS": All equipment/property is sold "AS IS, WHERE IS" with no warranty or guarantees, expressed or implied, No operational assessments have been made by DPA Auctions on this item, it has been photographed ONLY.





### #69 - 2011 Cat 908H Payloader (PZ8269, Unit 26496)

2011 Cat 908H Payloader (PZ8269, Unit 26496), diesel engine, shuttle shift transmission, heat, Am/Fm CD stereo, cab, lights, bucket, Michelin 400/70R20 tires, shows 3209 hours. Notes: Item Location: Manlius, IL 61338 Equipment Sold "AS IS, WHERE IS": All equipment/property is sold "AS IS, WHERE IS" with no warranty or guarantees, expressed or implied, No operational assessments have been made by DPA Auctions on this item, it has been photographed ONLY.



### #70 - 1989 Cat 936E Payloader (PZ8270, Unit 26057)

1989 Cat 936E Payloader (PZ8270, Unit 26057), diesel engine, shuttle shift transmission, heat, Am/Fm radio, cab, lights, bucket, 20.5-25 tires, shows 12,809 hours. Notes: Item Location: Manlius, IL 61338 Equipment Sold "AS IS, WHERE IS": All equipment/property is sold "AS IS, WHERE IS" with no warranty or guarantees, expressed or implied, No operational assessments have been made by DPA Auctions on this item, it has been photographed ONLY.



### #71 - CaseIH 24 Row Planting Parts (PZ8271)

CaseIH 24 Row Planting Parts (PZ8271), 24 - meters, air tubes, seed furmers, seed tubes, air bag brackets, row sprockets and both electric drive motors (All came off a CaseIH 24 row planter), everything was in working order when it was taken off. Notes: Item Location: Mc Lean, IL 61754 Equipment Sold "AS IS, WHERE IS": All equipment/property is sold "AS IS, WHERE IS" with no warranty or guarantees, expressed or implied, No operational assessments have been made by DPA Auctions on this item, it has been photographed ONLY.



### #72 - 2010 CaseIH Titan 4020 Liquid Floater (PZ8187, Unit AV-072)

2010 CaseIH Titan 4020 Liquid Floater (PZ8187, Unit AV-072), 8.9 diesel engine, Allison automatic transmission, air conditioning, heat, Am/Fm CD stereo, 1800 gallon stainless steel liquid system, 85' boom, defco pump, foam marker, poly foam marker tank, top poly rinse tank, stainless steel chemical inductor, Alliance 750/45R26.5 front tires, Firestone 1050/50R25 rear tires, Raven Envizio Pro, shows 3753 hours. Notes: Windshield has a crack in it. Item Location: Edison, NE 68936 Equipment Sold "AS IS, WHERE IS": All equipment/property is sold "AS IS, WHERE IS" with no warranty or guarantees, expressed or implied, No operational assessments have been made by DPA Auctions on this item, it has been photographed ONLY.



### #73 - 2009 John Deere 4930 Sprayer (NP6191, Unit 5071)

2009 John Deere 4930 Sprayer (NP6191, Unit 5071), John Deere diesel engine (S/N RG6090L042670), hydrostatic transmission, heat, air conditioning, Am/Fm CD radio, 1,200 gallon stainless steel liquid system, 120' boom, 5-way nozzle bodies, stainless steel chemical inductor, 45 gallon poly tank, 380/105R50 tires, Voyager backup camera, StarFire 3000 globe, GreenStar GS2 monitor, AutoTrac SF1 Active, Swath Control Pro Active, GreenStar Basics active, shows 3,191 hours. Notes: Item Location: Neodesha, KS 66757 Equipment Sold "AS IS, WHERE IS": All equipment/property is sold "AS IS, WHERE IS" with no warranty or guarantees, expressed or implied, No operational assessments have been made by DPA Auctions on this item, it has been photographed ONLY.



### #74 - 1987 Ford L8000 Truck (PZ8262)

1987 Ford L8000 Truck (PZ8262), diesel engine, 6 speed transmission, heat, single axle, shows 246,608 miles. Notes: Item Location: Armington, IL 61721 Equipment Sold "AS IS, WHERE IS": All equipment/property is sold "AS IS, WHERE IS" with no warranty or guarantees, expressed or implied, No operational assessments have been made by DPA Auctions on this item, it has been photographed ONLY.



### #75 - 2005 Ford F250 XLT Super Duty Pickup (PZ8263)

2005 Ford F250 XLT Super Duty Pickup (PZ8263), 4x4, 5.4 gas engine, automatic transmission, air conditioning, heat, Am/Fm radio, power windows, running boards, DMI bumper, shows 204,293 miles. Notes: Just had tune up, included New tie rods, ball joints and brakes. Item Location: Hanna City, IL 61536 Equipment Sold "AS IS, WHERE IS": All equipment/property is sold "AS IS, WHERE IS" with no warranty or guarantees, expressed or implied, No operational assessments have been made by DPA Auctions on this item, it has been photographed ONLY.



### #76 - Cleaners (PZ8264)

Cleaners (PZ8264), 12 row cleaners. Notes: Item Location: Lincoln, IL 62656 Equipment Sold "AS IS, WHERE IS": All equipment/property is sold "AS IS, WHERE IS" with no warranty or guarantees, expressed or implied, No operational assessments have been made by DPA Auctions on this item, it has been photographed ONLY.



### #77 - Cleaners (PZ8265)

Cleaners (PZ8265), 16 row cleaners. Notes: Item Location: Lincoln, IL 62656 Equipment Sold "AS IS, WHERE IS": All equipment/property is sold "AS IS, WHERE IS" with no warranty or guarantees, expressed or implied, No operational assessments have been made by DPA Auctions on this item, it has been photographed ONLY.



### #78 - Pipe Threader (PZ8266)

Pipe Threader (PZ8266), 3" pipe threader, roller, 20 gallon oil tank. Notes: Item Location: Lincoln, IL 62656 Equipment Sold "AS IS, WHERE IS": All equipment/property is sold "AS IS, WHERE IS" with no warranty or guarantees, expressed or implied, No operational assessments have been made by DPA Auctions on this item, it has been photographed ONLY.



### #79 - 2001 CaseIH FLX3330B Dry Floater (NP6182)

2001 CaseIH FLX3330B Dry Floater (NP6182), Cat 3208 diesel engine (seller spent \$24,500 on engine rebuild), Allison 6 speed transmission with High/Low axle speed, heat, air conditioning, Am/Fm radio, New Leader L3020 G4 stainless steel dry spreader box, 409 SS, dual spinners, 66x43.00-25 tires 50%, Ag Leader Versa w/ Ag Leader controller, so everything is run through an Ag Leader screen, shows 3,369 hours. Notes: Chassis painted and sandblasted 3 years ago, fully ready to variable rate and spread in the field today, newer Servo valve and A/C compressor, farmer owned and always shedded. Item Location: Goff, KS 66428 Equipment Sold "AS IS, WHERE IS": All equipment/property is sold "AS IS, WHERE IS" with no warranty or guarantees, expressed or implied, No operational assessments have been made by DPA Auctions on this item, it has been photographed ONLY.



### #80 - Clark GCS15 Forklift (NJP494)

Clark GCS15 Forklift (NJP494), LP gas engine, shuttle shift transmission, canopy, hard tire, shows 9268 hours. Notes: LP bottle NOT included, transmission slips. Item Location: Belleville, IL 62222 Equipment Sold "AS IS, WHERE IS": All equipment/property is sold "AS IS, WHERE IS" with no warranty or guarantees, expressed or implied, No operational assessments have been made by DPA Auctions on this item, it has been photographed ONLY.



### #81 - 2010 New Leader Dry Spreader Box (PZ8199)

2010 New Leader Dry Spreader Box (PZ8199), 2010 New Leader L4000 G4 304 stainless steel dry spreader box, belt over chain, hydraulic oil cooler, twin spinner. Notes: Belt over chain replaced 10/15/17, Both spinner motors-pans-blades replaced 9/2/2017. Running gear not included. Item Location: Dwight, IL 60420 Equipment Sold "AS IS, WHERE IS": All equipment/property is sold "AS IS, WHERE IS" with no warranty or guarantees, expressed or implied, No operational assessments have been made by DPA Auctions on this item, it has been photographed ONLY.



### #82 - Monitors (NJP1036)

Monitors (NJP1036), 1 - Raven Viper 2, 3 - Raven Cruisers. Notes: Item Location: Belleville, IL 62222 Equipment Sold "AS IS, WHERE IS": All equipment/property is sold "AS IS, WHERE IS" with no warranty or guarantees, expressed or implied, No operational assessments have been made by DPA Auctions on this item, it has been photographed ONLY.



### #83 - 2007 CaseIH SPX4420 Sprayer (PZ8190, Unit AV-094)

2007 CaseIH SPX4420 Sprayer (PZ8190, Unit AV-094), diesel engine, hydrostatic transmission, air conditioning, heat, Am/Fm CD stereo, 1200 gallon stainless steel liquid system, 90' boom, foam marker, poly foam marker tank, top poly rinse tank, stainless steel chemical inductor, Michelin Agribib 380/90R46 tires, Raven SCS4600 monitor, Raven Envizio Pro, Raven SmarTrax, shows 5998 hours. Notes: Item Location: Edison, NE 68936 Equipment Sold "AS IS, WHERE IS": All equipment/property is sold "AS IS, WHERE IS" with no warranty or guarantees, expressed or implied, No operational assessments have been made by DPA Auctions on this item, it has been photographed ONLY.



### #84 - 2010 John Deere 4930 (DR7929, Unit 33884)

2010 John Deere 4930 (DR7929, Unit 33884), John Deere diesel engine, hydrostatic drive, 1200 gallon stainless steel liquid system, 120' boom, foam markers, 5 way nozzle bodies, stainless steel chemical inductor, StarFire iTC globe, Green Star controller, AM/FM CD radio, 380/1050R50 tires, shows 2863 hours. Notes: Item Location: Centerville, SD 57014 Equipment Sold "AS IS, WHERE IS": All equipment/property is sold "AS IS, WHERE IS" with no warranty or guarantees, expressed or implied, No operational assessments have been made by DPA Auctions on this item, it has been photographed ONLY.



### #85 - Running Gear (NJP495, Unit 13)

Running Gear (NJP495, Unit 13), 4 wheel running gear, 5th wheel, 11L-15 flotation tires. Notes: Item Location: Belleville, IL 62222 Equipment Sold "AS IS, WHERE IS": All equipment/property is sold "AS IS, WHERE IS" with no warranty or guarantees, expressed or implied, No operational assessments have been made by DPA Auctions on this item, it has been photographed ONLY.



### #86 - Running Gear (NJP497, Unit 56)

Running Gear (NJP497, Unit 56), 4 wheel running gear, 5th wheel, 12.5L-15 flotation tires. Notes: Item Location: Belleville, IL 62222 Equipment Sold "AS IS, WHERE IS": All equipment/property is sold "AS IS, WHERE IS" with no warranty or guarantees, expressed or implied, No operational assessments have been made by DPA Auctions on this item, it has been photographed ONLY.



### #87 - Running Gear (NJP496)

Running Gear (NJP496), 4 wheel running gear, 5th wheel, 11L-15 flotation tires. Notes: Item Location: Belleville, IL 62222 Equipment Sold "AS IS, WHERE IS": All equipment/property is sold "AS IS, WHERE IS" with no warranty or guarantees, expressed or implied, No operational assessments have been made by DPA Auctions on this item, it has been photographed ONLY.



### #88 - Running Gear (NJP498, Unit 27)

Running Gear (NJP498, Unit 27), 4 wheel running gear, 5th wheel, 11L-15 flotation tires. Notes: Item Location: Belleville, IL 62222 Equipment Sold "AS IS, WHERE IS": All equipment/property is sold "AS IS, WHERE IS" with no warranty or guarantees, expressed or implied, No operational assessments have been made by DPA Auctions on this item, it has been photographed ONLY.



### #90 - Shaben Steel Vertical Liquid Storage Tank (NJP483, Unit L111)

Shaben Steel Vertical Liquid Storage Tank (NJP483, Unit L111), approx. 25' x 12', approx. 20,000 gallon capacity, manway access, data tag. Notes: This item must be removed by March 18, 2018, no exceptions. Dismantle, removal and transportation is that expense, risk and liability of the buyer. Item Location: Fairbury, NE 68352 Equipment Sold "AS IS, WHERE IS": All equipment/property is sold "AS IS, WHERE IS" with no warranty or guarantees, expressed or implied, No operational assessments have been made by DPA Auctions on this item, it has been photographed ONLY.



### #91 - 1996 AGCO White 6138 Planter (NP4267)

1996 AGCO White 6138 Planter (NP4267), 8 row 36", vertical fold, row markers, insecticide boxes, dual rate, vacuum, liquid fertilizer setup, liquid coulters, dual 100 gallon poly tanks, Yetter row cleaners, 1996 Demco Lil' Thumper piston pump (S/N 96119), extra rear packing wheels (see photos), (8) extra coulters, AGCO SM 3000 monitor, FMC Capture 2EC, Duo-Rate. Notes: Item Location: Fremont, NE 68025 Equipment Sold "AS IS, WHERE IS": All equipment/property is sold "AS IS, WHERE IS" with no warranty or guarantees, expressed or implied, No operational assessments have been made by DPA Auctions on this item, it has been photographed ONLY.



### #92 - 2005 International 4400 Grain Truck (NP6005)

2005 International 4400 Grain Truck (NP6005), DT466 diesel engine (280HP), Allison automatic transmission, heat, air conditioning, tandem axle, spring suspension, NEW Kann 20' aluminum grain body (never hauled a load), rear controls on box. Shurloc tarp, air shift PTO, ALL NEW 22.5 tires, shows 288,000 miles. Notes: Item Location: Coal Valley, IL 61240 Equipment Sold "AS IS, WHERE IS": All equipment/property is sold "AS IS, WHERE IS" with no warranty or guarantees, expressed or implied, No operational assessments have been made by DPA Auctions on this item, it has been photographed ONLY.



### #92A - Kenworth Flat Top Sleeper (NP6265)

Kenworth Flat Top Sleeper (NP6265), 40" flat top sleeper, A/C controls in sleeper, excellent condition. Notes: These sleepers are getting very hard to find. Item Location: Coal Valley, IL 61240 Equipment Sold "AS IS, WHERE IS": All equipment/property is sold "AS IS, WHERE IS" with no warranty or guarantees, expressed or implied, No operational assessments have been made by DPA Auctions on this item, it has been photographed ONLY.



### #93 - 2012 JD 4940 Sprayer (TR4030)

2012 JD 4940 Sprayer (TR4030), John Deere diesel engine, hydrostatic transmission, heat, air conditioning, Am/Fm CD radio, 1,200 gallon stainless steel liquid system, 120' boom, nozzles, stainless steel chemical inductor, underbelly extensions, front fill option added, 380/1050R50 tires, has been inspected by John Deere dealership and 100% field ready, has been shedded its entire life, farmer owned, 816 hours. Notes: Monitor DOES NOT SELL with this machine. Item Location: Guide Rock, NE 68942 Equipment Sold "AS IS, WHERE IS": All equipment/property is sold "AS IS, WHERE IS" with no warranty or guarantees, expressed or implied, No operational assessments have been made by DPA Auctions on this item, it has been photographed ONLY.



### #94 - 2011 CaseIH Patriot 4420 Sprayer (PZ8188, Unit AV-170)

2011 CaseIH Patriot 4420 Sprayer (PZ8188, Unit AV-170), diesel engine, hydrostatic transmission, air conditioning, heat, Am/Fm CD stereo, 1200 gallon stainless steel liquid system, 100' boom, foam marker, poly foam marker tank, top poly rinse tank, stainless steel chemical inductor, Michelin 380/90R46 tires, Raven 600ic SmarTrax, shows 4585 hours. Notes: Item Location: Edison, NE 68936 Equipment Sold "AS IS, WHERE IS": All equipment/property is sold "AS IS, WHERE IS" with no warranty or guarantees, expressed or implied, No operational assessments have been made by DPA Auctions on this item, it has been photographed ONLY.



### #95 - 2001 Case IH FLX4375 (DR7974)

2001 Case IH FLX4375 (DR7974), Cat diesel engine, Allison automatic transmission, New leader L4000 G4 stainless steel dry spinner box, 3rd bin, Multiplier insert, belt/chain, Raven Viper Pro controller, Raven Smart Steer, AM/FM CD radio, rear view camera, air conditioning, shows 51,385 miles, 4237 hours. Notes: Good solid running floater. Item Location: Hastings, MN 55033 Equipment Sold "AS IS, WHERE IS": All equipment/property is sold "AS IS, WHERE IS" with no warranty or guarantees, expressed or implied, No operational assessments have been made by DPA Auctions on this item, it has been photographed ONLY.



### #97 - 2009 John Deere 4930 (DR7963, Unit 818)

2009 John Deere 4930 (DR7963, Unit 818), John Deere diesel engine, hydrostatic drive, New Leader L3220 G4 stainless steel dry spinner box, Multiplier insert box, Green Star controller, roll over tarp, AM/FM CD radio, air conditioning, rear view camera, 380/105R50 row crop tires, shows 6010 hours. Notes: Item Location: Montgomery, MN 56069 Equipment Sold "AS IS, WHERE IS": All equipment/property is sold "AS IS, WHERE IS" with no warranty or guarantees, expressed or implied, No operational assessments have been made by DPA Auctions on this item, it has been photographed ONLY.



### #98 - Nh3 Nurse Tank (DR7976, Tank 38)

Nh3 Nurse Tank (DR7976, Tank 38), 1000 gallon Nh3 nurse tank, top front fill, data tag, 5th wheel style gear, rear hitch, 11L-15 tires. Notes: Item Location: Randolph, MN 55065 Equipment Sold "AS IS, WHERE IS": All equipment/property is sold "AS IS, WHERE IS" with no warranty or guarantees, expressed or implied, No operational assessments have been made by DPA Auctions on this item, it has been photographed ONLY.



### #99 - Nh3 Nurse Tank (DR7977, Tank 6)

Nh3 Nurse Tank (DR7977, Tank 6), 1000 gallon Nh3 nurse tank, top front fill, data tag, Pryor 5th wheel style gear, rear hitch, 11L-15 tires. Notes: Item Location: Randolph, MN 55065 Equipment Sold "AS IS, WHERE IS": All equipment/property is sold "AS IS, WHERE IS" with no warranty or guarantees, expressed or implied, No operational assessments have been made by DPA Auctions on this item, it has been photographed ONLY.



### #100 - Nh3 Nurse Tank (DR7978, Tank 24)

Nh3 Nurse Tank (DR7978, Tank 24), 1000 gallon Nh3 nurse tank, top front fill, data tag, 5th wheel style gear, rear hitch, 11L-15 tires. Notes: Item Location: Randolph, MN 55065 Equipment Sold "AS IS, WHERE IS": All equipment/property is sold "AS IS, WHERE IS" with no warranty or guarantees, expressed or implied, No operational assessments have been made by DPA Auctions on this item, it has been photographed ONLY.



### #101 - 1999 CaseIH MX240 MFWD Tractor (CP513)

1999 CaseIH MX240 MFWD Tractor (CP513), 6 cylinder diesel engine, powershift transmission, cab, heat, air conditioning, Am/Fm radio, 380/85R34 front duals, 480/80R46 rear duals, (14) front weights, 3 point, PTO, 4 port hydraulics, John Deere GreenStar 2 display, John Deere StarFire 3000 globe, John Deere AutoTrac Activation SF2, John Deere AutoTrac 200, shows 7,528 hours. Notes: Seller spent over \$8,000 on NEW guidance system with paperwork, contact seller for more information and documentation. Item Location: Edison, NE 68936 Equipment Sold "AS IS, WHERE IS": All equipment/property is sold "AS IS, WHERE IS" with no warranty or guarantees, expressed or implied, No operational assessments have been made by DPA Auctions on this item, it has been photographed ONLY.



### #102 - 2000 Terra Gator 8103 Dry Floater (NP6190, Unit 700)

2000 Terra Gator 8103 Dry Floater (NP6190, Unit 700), John Deere diesel engine (S/N RG6081H102089), Terra Shift transmission, heat, air conditioning, Am/Fm radio, New Leader L3020G4-13 stainless steel dry spreader box (S/N 119737), dual spinners, hydraulic, roll tarp, belt over chain, 1000/50R25 tires, Raven Envizio monitor, Raven GPS, lightbar, shows 57,971 miles, shows 6,655 hours. Notes: Cracked front windshield. Item Location: Neodesha, KS 66757 Equipment Sold "AS IS, WHERE IS": All equipment/property is sold "AS IS, WHERE IS" with no warranty or guarantees, expressed or implied, No operational assessments have been made by DPA Auctions on this item, it has been photographed ONLY.





### #103 - Nh3 Nurse Tank (DR7979, Tank 15)

Nh3 Nurse Tank (DR7979, Tank 15), 1000 gallon Nh3 nurse tank, top front fill, data tag, Pryor 5th wheel style gear, rear hitch, 11L-15 tires. Notes: Left front tire is FLAT. Item Location: Randolph, MN 55065 Equipment Sold "AS IS, WHERE IS": All equipment/property is sold "AS IS, WHERE IS" with no warranty or guarantees, expressed or implied, No operational assessments have been made by DPA Auctions on this item, it has been photographed ONLY.



### #104 - Nh3 Nurse Tank (DR7980, Tank 18)

Nh3 Nurse Tank (DR7980, Tank 18), 1000 gallon Nh3 nurse tank, top front fill, data tag, 5th wheel style gear, rear hitch, 11L-15 tires. Notes: Item Location: Randolph, MN 55065 Equipment Sold "AS IS, WHERE IS": All equipment/property is sold "AS IS, WHERE IS" with no warranty or guarantees, expressed or implied, No operational assessments have been made by DPA Auctions on this item, it has been photographed ONLY.



### #105 - Nh3 Nurse Tank (DR7981, Tank 5)

Nh3 Nurse Tank (DR7981, Tank 5), 1000 gallon Nh3 nurse tank, top front fill, data tag, 5th wheel style gear, adjustable axles, rear hitch, 12.5L-15 tires. Notes: Item Location: Randolph, MN 55065 Equipment Sold "AS IS, WHERE IS": All equipment/property is sold "AS IS, WHERE IS" with no warranty or guarantees, expressed or implied, No operational assessments have been made by DPA Auctions on this item, it has been photographed ONLY.



### #106 - Nh3 Nurse Tank (DR7982, Tank 17)

Nh3 Nurse Tank (DR7982, Tank 17), 1000 gallon Nh3 nurse tank, top front fill, data tag, Pryor 5th wheel style gear, rear hitch, 11L-15 tires. Notes: Item Location: Randolph, MN 55065 Equipment Sold "AS IS, WHERE IS": All equipment/property is sold "AS IS, WHERE IS" with no warranty or guarantees, expressed or implied, No operational assessments have been made by DPA Auctions on this item, it has been photographed ONLY.



### #107 - Nh3 Nurse Tank (DR7983, Tank 23)

Nh3 Nurse Tank (DR7983, Tank 23), 1000 gallon Nh3 nurse tank, top front fill, data tag, 5th wheel style gear, adjustable axles, rear hitch, 11L-15 tires. Notes: Item Location: Randolph, MN 55065 Equipment Sold "AS IS, WHERE IS": All equipment/property is sold "AS IS, WHERE IS" with no warranty or guarantees, expressed or implied, No operational assessments have been made by DPA Auctions on this item, it has been photographed ONLY.



### #108 - Nh3 Nurse Tank (DR7984, Tank 25)

Nh3 Nurse Tank (DR7984, Tank 25), 1000 gallon Nh3 nurse tank, top front fill, data tag, 5th wheel style gear, adjustable axles, rear hitch, 11L-15 tires. Notes: Item Location: Randolph, MN 55065 Equipment Sold "AS IS, WHERE IS": All equipment/property is sold "AS IS, WHERE IS" with no warranty or guarantees, expressed or implied, No operational assessments have been made by DPA Auctions on this item, it has been photographed ONLY.



### #109 - Nh3 Nurse Tank (DR7985, Tank 20)

Nh3 Nurse Tank (DR7985, Tank 20), 1000 gallon Nh3 nurse tank, top front fill, data tag, 5th wheel style gear, rear hitch, 11L-15 tires. Notes: Item Location: Randolph, MN 55065 Equipment Sold "AS IS, WHERE IS": All equipment/property is sold "AS IS, WHERE IS" with no warranty or guarantees, expressed or implied, No operational assessments have been made by DPA Auctions on this item, it has been photographed ONLY.



### #110 - Nh3 Nurse Tank (DR7986, Tank 35)

Nh3 Nurse Tank (DR7986, Tank 35), 1000 gallon Nh3 nurse tank, top front fill, data tag, 5th wheel style gear, adjustable axles, rear hitch, 11L-15 tires. Notes: Item Location: Randolph, MN 55065 Equipment Sold "AS IS, WHERE IS": All equipment/property is sold "AS IS, WHERE IS" with no warranty or guarantees, expressed or implied, No operational assessments have been made by DPA Auctions on this item, it has been photographed ONLY.



### #111 - Nh3 Nurse Tank (DR7987, Tank 19)

Nh3 Nurse Tank (DR7987, Tank 19), 1000 gallon Nh3 nurse tank, top front fill, data tag, 5th wheel style gear, rear hitch, 12.5L-15 tires. Notes: Item Location: Randolph, MN 55065 Equipment Sold "AS IS, WHERE IS": All equipment/property is sold "AS IS, WHERE IS" with no warranty or guarantees, expressed or implied, No operational assessments have been made by DPA Auctions on this item, it has been photographed ONLY.



---

### #112 - Nh3 Nurse Tank (DR7988, Tank 8)

Nh3 Nurse Tank (DR7988, Tank 8), 1000 gallon Nh3 nurse tank, top front fill, data tag, Pryor 5th wheel style gear, rear hitch, 11L-15 tires. Notes: Item Location: Randolph, MN 55065 Equipment Sold "AS IS, WHERE IS": All equipment/property is sold "AS IS, WHERE IS" with no warranty or guarantees, expressed or implied, No operational assessments have been made by DPA Auctions on this item, it has been photographed ONLY.



---

### #113 - 2015 Crary Pro Tile Plow (NP6180)

2015 Crary Pro Tile Plow (NP6180), Model 612, power feed, 7,000lb weight, 10' 6" height, 12' length, 6' max operating depth, main shank 4 1/4" Grade 50, 1" x 6" flat iron A-Frame, John Deere GPS wiring, AGPS (Advanced Geo Positioning Solutions) monitor with grade program/case. Notes: Used very little. Item Location: Bolckow, MO 64427 Equipment Sold "AS IS, WHERE IS": All equipment/property is sold "AS IS, WHERE IS" with no warranty or guarantees, expressed or implied, No operational assessments have been made by DPA Auctions on this item, it has been photographed ONLY.



---

### #114 - 2009 CaseIH Patriot 4420 Sprayer (PZ8189, Unit AV-043)

2009 CaseIH Patriot 4420 Sprayer (PZ8189, Unit AV-043), diesel engine, hydrostatic transmission, air conditioning, heat, Am/Fm CD stereo, 1200 gallon stainless steel liquid system, 90' boom, foam marker, poly foam marker tank, top poly rinse tank, stainless steel chemical inductor, Good Year & Firestone 380/90R46 tires, Raven SCS4600 monitor, Raven SmarTrax, shows 7104 hours. Notes: Item Location: Edison, NE 68936 Equipment Sold "AS IS, WHERE IS": All equipment/property is sold "AS IS, WHERE IS" with no warranty or guarantees, expressed or implied, No operational assessments have been made by DPA Auctions on this item, it has been photographed ONLY.



---

### #115 - 2002 Terra Gator 8144 (DR7933, Unit 33889)

2002 Terra Gator 8144 (DR7933, Unit 33889), John Deere diesel engine, Terra Shift transmission, 4X4, Ag Chem Air Spreader box, 70' booms, foam markers, stainless steel foam tank, electric roll tarp, Falcon II controller, Raven light bar swathing, rear view camera, cab heat/air conditioning, AM/FM cassette radio, shows 5374 hours, 55,302 miles. Notes: Very clean well maintained machine. Literally was in the field day of pictures. Item Location: Laurel, NE 68745 Equipment Sold "AS IS, WHERE IS": All equipment/property is sold "AS IS, WHERE IS" with no warranty or guarantees, expressed or implied, No operational assessments have been made by DPA Auctions on this item, it has been photographed ONLY.



---

### #116 - 2006 Case IH FLX4010 (DR7931, Unit 90330)

2006 Case IH FLX4010 (DR7931, Unit 90330), diesel engine, Allison automatic transmission, 1800 gallon stainless steel liquid system, 60/80' booms, SCS 4600 controller, foam markers, top mounted poly rinse tank, stainless steel chemical inductor, heavy duty hi flow pump, AM/FM cassette radio, cab heat/air conditioning, 54X31.00R26 front tires, 66X43.00-25 rear tires, shows 5308 hours. Notes: Engine was replaced with drop in @ 4840 hours. Item Location: Meckling, SD 57069 Equipment Sold "AS IS, WHERE IS": All equipment/property is sold "AS IS, WHERE IS" with no warranty or guarantees, expressed or implied, No operational assessments have been made by DPA Auctions on this item, it has been photographed ONLY.



---

### #117 - Sprayer Booms (NP6198)

Sprayer Booms (NP6198), came off 2015 JD R4023, ran 2 seasons, extends 80' to 90' with full breakaways, awesome condition. Notes: Seller can ship at buyer's expense. Item Location: New Haven, MO 63068 Equipment Sold "AS IS, WHERE IS": All equipment/property is sold "AS IS, WHERE IS" with no warranty or guarantees, expressed or implied, No operational assessments have been made by DPA Auctions on this item, it has been photographed ONLY.



---

### #119 - 2010 B&B Sprayer Trailer (DR7965)

2010 B&B Sprayer Trailer (DR7965), 32' overall length, tandem axle dual wheeled gear, 20' 8" rear fold down ramps, air brakes, D tie down rings, pintle hitch, 40,000lb trailer, 215/75R17.5 tires. Notes: This trailer was used to haul a RoGator 984 Sprayer. Item Location: Chippewa Falls, WI 54729 Equipment Sold "AS IS, WHERE IS": All equipment/property is sold "AS IS, WHERE IS" with no warranty or guarantees, expressed or implied, No operational assessments have been made by DPA Auctions on this item, it has been photographed ONLY.



---

### #120 - 2002 Honda Odyssey Van (TR4338)

2002 Honda Odyssey Van (TR4338), 3.5L gas engine, automatic transmission, heat, air conditioning, Am/Fm CD radio, rear control climate/radio, 3rd row seats, heated seats, power seats, DVD player, power sliding doors, cruise control, power windows and locks, approx. 157,000 miles. Notes: Transmission is out, vehicle will not move, engine does start. Item Location: Fremont, NE 68025 Equipment Sold "AS IS, WHERE IS": All equipment/property is sold "AS IS, WHERE IS" with no warranty or guarantees, expressed or implied, No operational assessments have been made by DPA Auctions on this item, it has been photographed ONLY.



### #121 - 2008 Terra Gator 8203 Dry Air Flow Floater (PZ8273)

2008 Terra Gator 8203 Dry Air Flow Floater (PZ8273), diesel engine, Terra Shift transmission, air conditioning, heat, Am/Fm radio, AirMax 1000 single bin dry air flow system, 70' stainless steel boom, electric roll over tarp, Michelin 1000/50R25 front tire @ 25%, Good Year 1000/50R25 rear tires @ 80%, Raven Viper monitor, Raven SmarTrax, shows 3187 hours. Notes: Item Location: Monroeville, OH 44847 Equipment Sold "AS IS, WHERE IS": All equipment/property is sold "AS IS, WHERE IS" with no warranty or guarantees, expressed or implied, No operational assessments have been made by DPA Auctions on this item, it has been photographed ONLY.



### #122 - 2003 CaseIH Titan FLX4300 Liquid Floater (NP6187)

2003 CaseIH Titan FLX4300 Liquid Floater (NP6187), CNH 8.3L 24 valve diesel engine, Allison automatic transmission, heat, air conditioning, Am/Fm CD radio, Case 520/Liquid 1,800 gallon stainless steel liquid system (S/N JFG0005247), 60/80' boom, top poly rinse tank, stainless steel chemical inductor, Defco pump, 1000/50R25 rear tires, 48x31.00-20 front tires, Trimble GPS, Trimble Field-IQ Maste Switch Box, Trimble CFX-750, shows 6,487 hours, shows 66,605 miles. Notes: Door won't open from inside the cab, contact seller for more details. Item Location: Gypsum, KS 67448 Equipment Sold "AS IS, WHERE IS": All equipment/property is sold "AS IS, WHERE IS" with no warranty or guarantees, expressed or implied, No operational assessments have been made by DPA Auctions on this item, it has been photographed ONLY.



### #123 - 1999 GVM Row Cat Dry Floater (NP6186)

1999 GVM Row Cat Dry Floater (NP6186), Cummins ReCon diesel engine, automatic transmission, heat, air conditioning, Am/Fm CD radio, GVM DD-95.T-12 stainless steel dry spreader box (S/N 121566), hydraulic, dual spinners, belt over chain, 420/80R46 tires, GVW 48,000, Front GAWR 22,000, Rear GAWR 26,000, GreenStar Rate Controller Dry components (NO MONITOR). Notes: Shows 1,169 hours, hour meter is BROKEN, exact hours of machine are UNKNOWN, machine has transmission issues, passenger side door is missing a hinge, contact seller for more details. Item Location: Gypsum, KS 67448 Equipment Sold "AS IS, WHERE IS": All equipment/property is sold "AS IS, WHERE IS" with no warranty or guarantees, expressed or implied, No operational assessments have been made by DPA Auctions on this item, it has been photographed ONLY.



### #124 - 1997 International 8100 Fuel Truck (NP6189, Unit T-80)

1997 International 8100 Fuel Truck (NP6189, Unit T-80), Cummins M11 diesel engine, Spicer 10 speed transmission, heat, air conditioning, Am/Fm CD radio, tandem axle, air ride suspension, 2001 Progress Model 90LS 4,000 gallon 4 compartment fuel body (900-1250-1250-600), MFG. Code DOT 406, (2) Hannay electric hose reels, (2) Veeter-Root tricket printers, (2) Schlumberger 4-MT meters, 11R22.5 rear tires, 315/80R22.5 front tires, odometer shows 91,419 miles (approx. 755,481 total miles). Notes: Item Location: Durham, KS 67438 Equipment Sold "AS IS, WHERE IS": All equipment/property is sold "AS IS, WHERE IS" with no warranty or guarantees, expressed or implied, No operational assessments have been made by DPA Auctions on this item, it has been photographed ONLY.



### #125 - John Deere Original GreenStar Display (NP6196)

John Deere Original GreenStar Display (NP6196), display has 1,174 hours on it and is in excellent condition, always stored inside when not being used. Notes: Item Location: Fort Dodge, IA 50501 Equipment Sold "AS IS, WHERE IS": All equipment/property is sold "AS IS, WHERE IS" with no warranty or guarantees, expressed or implied, No operational assessments have been made by DPA Auctions on this item, it has been photographed ONLY.



### #126 - John Deere 2630 GreenStar 3 Display (NP6200)

John Deere 2630 GreenStar 3 Display (NP6200), Basics - Activated, AutoTrac SF2 - Activated, Section Control - Activated, AutoTrac RowSense SF2 - Activated, display has 934 hours on it and is in extremely GOOD condition, always stored inside when not being used, with John Deere StarFire 6000 Receiver, SF1 - Accuracy. Notes: Item Location: Fort Dodge, IA 50501 Equipment Sold "AS IS, WHERE IS": All equipment/property is sold "AS IS, WHERE IS" with no warranty or guarantees, expressed or implied, No operational assessments have been made by DPA Auctions on this item, it has been photographed ONLY.



### #127 - (4) Michelin Flotation Tires/Rims (NP6201)

(4) Michelin Flotation Tires/Rims (NP6201), Michelin - XM28, 620/70R46 size, 12 bolt rim pattern, 10-25% tread, can be used on a John Deere 4920/30/40 or R4045, tires can be used on multiple machines, flotation fenders will fit on a John Deere 4920/30 or 40. Notes: Item Location: Fort Dodge, IA 50501 Equipment Sold "AS IS, WHERE IS": All equipment/property is sold "AS IS, WHERE IS" with no warranty or guarantees, expressed or implied, No operational assessments have been made by DPA Auctions on this item, it has been photographed ONLY.



---

### #128 - Clipper #116 Seed & Grain Cleaner (NP6197)

Clipper #116 Seed & Grain Cleaner (NP6197), with variable speed air and screen cleaning brushes, unit comes with 2 augers for feeding the cleaner and then taking away the clean grain (as shown in pictures with arrows pointing to them), unit comes with several screens for cleaning beans, wheat, and clover, the overall length on the trailer is 136", overall height with extended hopper is 132", overall width is 67", clean grain discharge height from the bottom of the cleaner is 28", unit comes with 2 hp, single phase motor, machine height only is 87", machine length only is 81", machine width only is 60". Notes: Item Location: Trilla, IL 62469 Equipment Sold "AS IS, WHERE IS": All equipment/property is sold "AS IS, WHERE IS" with no warranty or guarantees, expressed or implied, No operational assessments have been made by DPA Auctions on this item, it has been photographed ONLY.



---

### #129 - 2014 Peterbilt Stahly PB348 Dry Floater (NP6177)

2014 Peterbilt Stahly PB348 Dry Floater (NP6177), Paccar PX-9 ISL9 345 8.3L diesel engine, Allison RDS3000 automatic transmission, heat, air conditioning, Am/Fm radio, cruise, 6.14 axle ratio, New Leader Twin Bin L4000G4-14 304 brite finish stainless steel dry spreader box (S/N 136911), with 7' New Leader Multiplier insert, #4 belt over chain with pressurized twin line oiler, state-of-the-art hydraulic system with fan cooled hydraulic cooler, dual dished 24" widespread spinners with 304 material divider, 304 SS up and lower spinner guards, Hot Shift PTO with direct hydraulic pump, roll tarp, 48x25.00 front tires (NEW this spring), 66x43.00-25 rear tires (4 Months Old), Raven Viper Pro monitor, Raven CAN Switch Box, Raven SmarTrax MD Auto Steer, Zone Defense 7" flat monitor system, shows 2,450 hours. Notes: Item Location: Edina, MO 63537 Equipment Sold "AS IS, WHERE IS": All equipment/property is sold "AS IS, WHERE IS" with no warranty or guarantees, expressed or implied, No operational assessments have been made by DPA Auctions on this item, it has been photographed ONLY.



---

### #130 - 2012 RG1100 Dry Spreader (TR4404)

2012 RG1100 Dry Spreader (TR4404), Diesel engine, hydrostatic transmission, AC, heat, am/fm radio, New Leader L4258G4 dry spreader box with twin spinner, Raven viper pro, SmarTraxx, GPS receiver, electric tarp, RGL600 lightbar, 380/90R46 row crop tires. Notes: Floater tires for machine sold in separate lot. Item Location: Tekamah, NE 68061 Equipment Sold "AS IS, WHERE IS": All equipment/property is sold "AS IS, WHERE IS" with no warranty or guarantees, expressed or implied, No operational assessments have been made by DPA Auctions on this item, it has been photographed ONLY.



---

### #131 - 1600 gallon poly tank (TR4400)

1600 gallon poly tank (TR4400), 1600 gallon poly tank on poly base. It has a 2" SS pipe and valve. Notes: Item Location: Creston, IA 50801 Equipment Sold "AS IS, WHERE IS": All equipment/property is sold "AS IS, WHERE IS" with no warranty or guarantees, expressed or implied, No operational assessments have been made by DPA Auctions on this item, it has been photographed ONLY.



---

### #132 - 2500 gal poly tank (TR4401)

2500 gal poly tank (TR4401), Poly tank is 2500 cone bottom on metal stand. 2" outlet w/ SS pipe and valve. Top manway. Notes: Item Location: Creston, IA 50801 Equipment Sold "AS IS, WHERE IS": All equipment/property is sold "AS IS, WHERE IS" with no warranty or guarantees, expressed or implied, No operational assessments have been made by DPA Auctions on this item, it has been photographed ONLY.



---

### #133 - Stainless 1600 gal tank (TR4402)

Stainless 1600 gal tank (TR4402), SS tank is 1600 gallon cone bottom. 1983 Progress #36103. 2" SS pipe. Top manway and vacuum vent. Notes: Item Location: Creston, IA 50801 Equipment Sold "AS IS, WHERE IS": All equipment/property is sold "AS IS, WHERE IS" with no warranty or guarantees, expressed or implied, No operational assessments have been made by DPA Auctions on this item, it has been photographed ONLY.





### #134 - 2017 John Deere X758 Mower (NJP1098)

2017 John Deere X758 Mower (NJP1098), diesel engine, 54" high capacity deck, shows 11 hours. Notes: Item Location: Pawnee City, NE 68420 Equipment Sold "AS IS, WHERE IS": All equipment/property is sold "AS IS, WHERE IS" with no warranty or guarantees, expressed or implied, No operational assessments have been made by DPA Auctions on this item, it has been photographed ONLY.



### #135 - 2017 Crownline 215 SS (PD1060)

2017 Crownline 215 SS (PD1060), Mercruiser 6.2 liter 300 HP, Bravo 3 outdrive, driftwood woven snap out mat, battery charger, docking lights, LED lighting package, social swim speakers, snap on covers, bimini top, custom tandem axle trailer w/ swing tongue. Notes: Full new boat factory warranty. Item Location: Valley, NE 68064 Equipment Sold "AS IS, WHERE IS": All equipment/property is sold "AS IS, WHERE IS" with no warranty or guarantees, expressed or implied, No operational assessments have been made by DPA Auctions on this item, it has been photographed ONLY.



### #136 - NH3 Nurse Tank (NJP1082, Unit 91919)

NH3 Nurse Tank (NJP1082, Unit 91919), 1,000 gallon capacity, top front fill, 3 wheel gear, 11L-15 tires, water tank, data plate, Tank 886. Notes: Item Location: Chester, NE 68327 Equipment Sold "AS IS, WHERE IS": All equipment/property is sold "AS IS, WHERE IS" with no warranty or guarantees, expressed or implied, No operational assessments have been made by DPA Auctions on this item, it has been photographed ONLY.



### #137 - NH3 Nurse Tank (NJP1085, Unit 91907)

NH3 Nurse Tank (NJP1085, Unit 91907), 1,000 gallon capacity, top front fill, 3 wheel gear, 11L-15 tires, water tank, data plate, Tank 693. Notes: Item Location: Chester, NE 68327 Equipment Sold "AS IS, WHERE IS": All equipment/property is sold "AS IS, WHERE IS" with no warranty or guarantees, expressed or implied, No operational assessments have been made by DPA Auctions on this item, it has been photographed ONLY.



### #138 - NH3 Nurse Tank (NJP1086)

NH3 Nurse Tank (NJP1086), 1,000 gallon capacity, top front fill, 3 wheel gear, 11L-15 tires, data plate, Tank 144. Notes: Flat front tire. Item Location: Chester, NE 68327 Equipment Sold "AS IS, WHERE IS": All equipment/property is sold "AS IS, WHERE IS" with no warranty or guarantees, expressed or implied, No operational assessments have been made by DPA Auctions on this item, it has been photographed ONLY.



### #139 - NH3 Nurse Tank (NJP1089, Unit 92910)

NH3 Nurse Tank (NJP1089, Unit 92910), Quality Steel Corporation 1,000 gallon capacity, top front fill, 3 wheel gear, 11L-15 tires, water tank, data plate, Tank 690, S/N 77728. Notes: Item Location: Chester, NE 68327 Equipment Sold "AS IS, WHERE IS": All equipment/property is sold "AS IS, WHERE IS" with no warranty or guarantees, expressed or implied, No operational assessments have been made by DPA Auctions on this item, it has been photographed ONLY.



### #140 - NH3 Nurse Tank (NJP1090, Unit 91905)

NH3 Nurse Tank (NJP1090, Unit 91905), 1965 Trinity Steel Co., Inc. 1,000 gallon capacity, top front fill, 3 wheel gear, 11L-15 tires, water tank, data plate, Tank 681, S/N 135795. Notes: Item Location: Chester, NE 68327 Equipment Sold "AS IS, WHERE IS": All equipment/property is sold "AS IS, WHERE IS" with no warranty or guarantees, expressed or implied, No operational assessments have been made by DPA Auctions on this item, it has been photographed ONLY.



### #141 - NH3 Nurse Tank (NJP1091, Unit 70714)

NH3 Nurse Tank (NJP1091, Unit 70714), R&R Tank Co. 1,000 gallon capacity, top front fill, Pryor style gear, 11L-15 tires, water tank, data plate, Tank 791, S/N CA4455. Notes: Item Location: Chester, NE 68327 Equipment Sold "AS IS, WHERE IS": All equipment/property is sold "AS IS, WHERE IS" with no warranty or guarantees, expressed or implied, No operational assessments have been made by DPA Auctions on this item, it has been photographed ONLY.



### #142 - NH3 Nurse Tank (NJP1092, Unit 91901)

NH3 Nurse Tank (NJP1092, Unit 91901), R&R Tank Co. 1,000 gallon capacity, top front fill, Pryor style gear, 11L-15 tires, data plate, Tank 427, S/N CC443. Notes: Item Location: Chester, NE 68327 Equipment Sold "AS IS, WHERE IS": All equipment/property is sold "AS IS, WHERE IS" with no warranty or guarantees, expressed or implied, No operational assessments have been made by DPA Auctions on this item, it has been photographed ONLY.



### #143 - (4) Michelin Flotation Tires/Rims (NP6202)

(4) Michelin Flotation Tires/Rims (NP6202), Michelin - MultiBib, 650/65R38 size, 75-80% tread, 10 bolt rim pattern, came off a CaseIH Patriot 4430 sprayer, tires can be used on multiple machines. Notes: Item Location: Fort Dodge, IA 50501 Equipment Sold "AS IS, WHERE IS": All equipment/property is sold "AS IS, WHERE IS" with no warranty or guarantees, expressed or implied, No operational assessments have been made by DPA Auctions on this item, it has been photographed ONLY.



### #144 - 2004 RoGator 1264 Sprayer (TR4405)

2004 RoGator 1264 Sprayer (TR4405), cat Diesel engine, hydrostatic transmission, heat, AC, am/fm radio, 1200 gallon stainless steel liquid system, 80' boom, 3 way nozzle bodies, high output fertilizer boom, foam marker, 30 gal stainless steel foam marker tank, top poly rinse tank, 380/90R46 tires, Raven SCS661 controller, 40,301 miles and 3966 hrs, will also come with a raven viper pro monitor that is not installed. Notes: Item Location: Tekamah, NE 68061 Equipment Sold "AS IS, WHERE IS": All equipment/property is sold "AS IS, WHERE IS" with no warranty or guarantees, expressed or implied, No operational assessments have been made by DPA Auctions on this item, it has been photographed ONLY.



### #145 - Floater Tires (TR4403)

Floater Tires (TR4403), 710/70R38 flotation tires. Came off a 2012 RG1100 Sprayer. Notes: Item Location: Tekamah, NE 68061 Equipment Sold "AS IS, WHERE IS": All equipment/property is sold "AS IS, WHERE IS" with no warranty or guarantees, expressed or implied, No operational assessments have been made by DPA Auctions on this item, it has been photographed ONLY.



### #146 - 2017 Crownline E2 (PD1061)

2017 Crownline E2 (PD1061), Mercruiser 6.2 liter 300 HP, bravo 3 outdrive, snap in seadeck flooring, head compartment w/ porta potti, battery charger, fresh water wash down, transom stereo remote, bimini top, snap on covers, custom tandem axle trailer w/ swing tongue. Notes: Full new boat factory warranty. Item Location: Valley, NE 68064 Equipment Sold "AS IS, WHERE IS": All equipment/property is sold "AS IS, WHERE IS" with no warranty or guarantees, expressed or implied, No operational assessments have been made by DPA Auctions on this item, it has been photographed ONLY.



### #147 - 2000 Terra Gator 8103 (DR7930, Unit 57134)

2000 Terra Gator 8103 (DR7930, Unit 57134), John Deere diesel engine, Terra Shift transmission, 1800 gallon stainless steel liquid system, 80' boom, Raven 661 controller, foam markers, stainless steel foam tank, stainless steel chemical inductor, poly rinse tank, AM/FM cassette radio, cab heat/ air conditioning, shows 4466 hours, 41,166 miles. Notes: Item Location: Meckling, SD 57069 Equipment Sold "AS IS, WHERE IS": All equipment/property is sold "AS IS, WHERE IS" with no warranty or guarantees, expressed or implied, No operational assessments have been made by DPA Auctions on this item, it has been photographed ONLY.



### #148 - 2002 Loral Easy Rider (DR7961)

2002 Loral Easy Rider (DR7961), model 4000, Cummins ISM diesel engine, Allison automatic transmission, cab chassis unit, X-cab, Raven 661 controller, E-Z Steer, AM/FM radio, air conditioning, cruise control, 66X43.00-25 rear tires, 48X25.00-20 front tires, shows 18,629 miles, 1981 hours. Notes: Item Location: Montgomery, MN 56069 Equipment Sold "AS IS, WHERE IS": All equipment/property is sold "AS IS, WHERE IS" with no warranty or guarantees, expressed or implied, No operational assessments have been made by DPA Auctions on this item, it has been photographed ONLY.



### #149 - 2008 John Deere 4930 (DR8012, Unit 236)

2008 John Deere 4930 (DR8012, Unit 236), John Deere diesel engine, hydrostatic drive, 1200 gallon stainless steel liquid system, 120' boom, 5 way nozzle bodies, Green Star controller, Starfire 3000 receiver, stainless steel chemical inductor, cab heat/air conditioning, AM/FM CD radio, 380/105R50 row crop tires, shows 4680 hrs. Notes: Item Location: Montgomery, MN 56069 Equipment Sold "AS IS, WHERE IS": All equipment/property is sold "AS IS, WHERE IS" with no warranty or guarantees, expressed or implied, No operational assessments have been made by DPA Auctions on this item, it has been photographed ONLY.



### #150 - 1996 Ford L8000 (DR8011)

1996 Ford L8000 (DR8011), Cummins diesel engine, 9 speed transmission, tandem axle full screw, cab/chassis, AM/FM radio, air brakes, shows 278,744 miles. Notes: Item Location: Montgomery, MN 56069 Equipment Sold "AS IS, WHERE IS": All equipment/property is sold "AS IS, WHERE IS" with no warranty or guarantees, expressed or implied, No operational assessments have been made by DPA Auctions on this item, it has been photographed ONLY.



---

### #151 - Steel Vertical Liquid Tank (NJP488)

Steel Vertical Liquid Tank (NJP488), 13,000 gallon capacity, flat bottom, Tank #5. Notes: Tank ONLY. This item must be removed by March 18, 2018, no exceptions. Dismantle, removal and transportation is that expense, risk and liability of the buyer. Item Location: Morrowville, KS 66958 Equipment Sold "AS IS, WHERE IS": All equipment/property is sold "AS IS, WHERE IS" with no warranty or guarantees, expressed or implied, No operational assessments have been made by DPA Auctions on this item, it has been photographed ONLY.



---

### #152 - Steel Vertical Liquid Tank (NJP489)

Steel Vertical Liquid Tank (NJP489), 13,000 gallon capacity, flat bottom, Tank #6. Notes: Tank ONLY. This item must be removed by March 18, 2018, no exceptions. Dismantle, removal and transportation is that expense, risk and liability of the buyer. Item Location: Morrowville, KS 66958 Equipment Sold "AS IS, WHERE IS": All equipment/property is sold "AS IS, WHERE IS" with no warranty or guarantees, expressed or implied, No operational assessments have been made by DPA Auctions on this item, it has been photographed ONLY.



---

### #153 - Fiberglass Vertical Liquid Tank (NJP491)

Fiberglass Vertical Liquid Tank (NJP491), 17,600 gallon capacity, flat bottom, manway access, Tank #4. Notes: Tank ONLY. This item must be removed by March 18, 2018, no exceptions. Dismantle, removal and transportation is that expense, risk and liability of the buyer. Item Location: Morrowville, KS 66958 Equipment Sold "AS IS, WHERE IS": All equipment/property is sold "AS IS, WHERE IS" with no warranty or guarantees, expressed or implied, No operational assessments have been made by DPA Auctions on this item, it has been photographed ONLY.



---

### #154 - Fiberglass Vertical Liquid Tank (NJP492)

Fiberglass Vertical Liquid Tank (NJP492), 17,600 gallon capacity, flat bottom, manway access, Tank #3. Notes: Tank ONLY. This item must be removed by March 18, 2018, no exceptions. Dismantle, removal and transportation is that expense, risk and liability of the buyer. Item Location: Morrowville, KS 66958 Equipment Sold "AS IS, WHERE IS": All equipment/property is sold "AS IS, WHERE IS" with no warranty or guarantees, expressed or implied, No operational assessments have been made by DPA Auctions on this item, it has been photographed ONLY.



---

### #155 - Fiberglass Vertical Liquid Tank NJP493)

Fiberglass Vertical Liquid Tank NJP493), 17,600 gallon capacity, flat bottom, mayway access, Tank #2. Notes: Tank ONLY. This item must be removed by March 18, 2018, no exceptions. Dismantle, removal and transportation is that expense, risk and liability of the buyer. Item Location: Morrowville, KS 66958 Equipment Sold "AS IS, WHERE IS": All equipment/property is sold "AS IS, WHERE IS" with no warranty or guarantees, expressed or implied, No operational assessments have been made by DPA Auctions on this item, it has been photographed ONLY.



---

### #156 - Fiberglass Vertical Liquid Tank (NJP494)

Fiberglass Vertical Liquid Tank (NJP494), 17,600 gallon capacity, flat bottom, manway access, Tank #1. Notes: Tank ONLY. This item must be removed by March 18, 2018, no exceptions. Dismantle, removal and transportation is that expense, risk and liability of the buyer. Item Location: Morrowville, KS 66958 Equipment Sold "AS IS, WHERE IS": All equipment/property is sold "AS IS, WHERE IS" with no warranty or guarantees, expressed or implied, No operational assessments have been made by DPA Auctions on this item, it has been photographed ONLY.



---

### #157 - Poly Liquid Tank (NJP495)

Poly Liquid Tank (NJP495), 1,750 gallon poly flat bottom liquid tank. Notes: Item Location: Morrowville, KS 66958 Equipment Sold "AS IS, WHERE IS": All equipment/property is sold "AS IS, WHERE IS" with no warranty or guarantees, expressed or implied, No operational assessments have been made by DPA Auctions on this item, it has been photographed ONLY.



---

### #158 - Liquid Blender (NJP487)

Liquid Blender (NJP487), 5 ton steel liquid blender, digital scale, NO pump and motor. Notes: NO pump and motor. This item must be removed by March 18, 2018, no exceptions. Dismantle, removal and transportation is that expense, risk and liability of the buyer. Item Location: Morrowville, KS 66958 Equipment Sold "AS IS, WHERE IS": All equipment/property is sold "AS IS, WHERE IS" with no warranty or guarantees, expressed or implied, No operational assessments have been made by DPA Auctions on this item, it has been photographed ONLY.



---

### #159 - Poly Tank (NJP490)

Poly Tank (NJP490), 1000 gallon poly liquid tank. Notes: Item Location: Morrowville, KS 66958 Equipment Sold "AS IS, WHERE IS": All equipment/property is sold "AS IS, WHERE IS" with no warranty or guarantees, expressed or implied, No operational assessments have been made by DPA Auctions on this item, it has been photographed ONLY.



### #160 - Loadout Manifold (NJP496)

Loadout Manifold (NJP496), catwalk, 6-way loadout manifold, includes plumbing up to first valve of the each tank, 3" Pump/Motor included, electrical components DO NOT SELL. Notes: This lot includes the plumbing up to the first valve of each tank. The electrical components DO NOT SELL with this lot. Contact seller for more details. This item must be removed by March 18, 2018, no exceptions. Dismantle, removal and transportation is that expense, risk and liability of the buyer. Item Location: Morrowville, KS 66958 Equipment Sold "AS IS, WHERE IS": All equipment/property is sold "AS IS, WHERE IS" with no warranty or guarantees, expressed or implied, No operational assessments have been made by DPA Auctions on this item, it has been photographed ONLY.



### #161 - Propane Tank (NJP497)

Propane Tank (NJP497), 1000 gallon capacity, data plate. Notes: Item Location: Morrowville, KS 66958 Equipment Sold "AS IS, WHERE IS": All equipment/property is sold "AS IS, WHERE IS" with no warranty or guarantees, expressed or implied, No operational assessments have been made by DPA Auctions on this item, it has been photographed ONLY.



### #162 - 2017 Crownline 275 SS (PD1062)

2017 Crownline 275 SS (PD1062), Mercruiser 6.2 liter 300 HP, bravo 3 outdrive, snap in seadeck flooring, head compartment w/ porta potti, electric folding aluminum arch w/ bimini top, LED accent lighting, social swim speakers, snap on covers, battery charger, custom tandem axle trailer w/ swing tongue. Notes: Full new boat factory warranty. Item Location: Valley, NE 68064 Equipment Sold "AS IS, WHERE IS": All equipment/property is sold "AS IS, WHERE IS" with no warranty or guarantees, expressed or implied, No operational assessments have been made by DPA Auctions on this item, it has been photographed ONLY.



### #163 - 1999 Loral Easy Rider (DR7962)

1999 Loral Easy Rider (DR7962), model 4000, diesel engine, Allison automatic transmission, X-cab, New Leader L4000 G4 stainless steel dry spinner box, roll over tarp (needs replaced), New Leader controller, swathing light bar, AM/FM radio, air conditioning, cruise control, 66X43.00-25 rear tires, 48X25.00-20 front tires, shows 38,108 miles, 3718 hours. Notes: Box side is damaged from blown hydraulic hose that dropped loader bucket. Item Location: Montgomery, MN 56069 Equipment Sold "AS IS, WHERE IS": All equipment/property is sold "AS IS, WHERE IS" with no warranty or guarantees, expressed or implied, No operational assessments have been made by DPA Auctions on this item, it has been photographed ONLY.



### #164 - Running Gear (NJP1071)

Running Gear (NJP1071), 11L-15 flotation tires. Notes: Item Location: Chester, NE 68327 Equipment Sold "AS IS, WHERE IS": All equipment/property is sold "AS IS, WHERE IS" with no warranty or guarantees, expressed or implied, No operational assessments have been made by DPA Auctions on this item, it has been photographed ONLY.



### #165 - Running Gear (NJP1072)

Running Gear (NJP1072), 11L-15 flotation tires. Notes: Item Location: Chester, NE 68327 Equipment Sold "AS IS, WHERE IS": All equipment/property is sold "AS IS, WHERE IS" with no warranty or guarantees, expressed or implied, No operational assessments have been made by DPA Auctions on this item, it has been photographed ONLY.



### #166 - Running Gear (NJP1073)

Running Gear (NJP1073), 11L-15 flotation tires. Notes: Item Location: Chester, NE 68327 Equipment Sold "AS IS, WHERE IS": All equipment/property is sold "AS IS, WHERE IS" with no warranty or guarantees, expressed or implied, No operational assessments have been made by DPA Auctions on this item, it has been photographed ONLY.



### #167 - Running Gear (NJP1074)

Running Gear (NJP1074), 11L-15 flotation tires. Notes: Item Location: Chester, NE 68327 Equipment Sold "AS IS, WHERE IS": All equipment/property is sold "AS IS, WHERE IS" with no warranty or guarantees, expressed or implied, No operational assessments have been made by DPA Auctions on this item, it has been photographed ONLY.



### #168 - Running Gear (NJP1075)

Running Gear (NJP1075), 11L-15 flotation tires. Notes: Item Location: Chester, NE 68327 Equipment Sold "AS IS, WHERE IS": All equipment/property is sold "AS IS, WHERE IS" with no warranty or guarantees, expressed or implied, No operational assessments have been made by DPA Auctions on this item, it has been photographed ONLY.





### #169 - Running Gear (NJP1076)

Running Gear (NJP1076), 11L-15 flotation tires. Notes: Item Location: Chester, NE 68327 Equipment Sold "AS IS, WHERE IS": All equipment/property is sold "AS IS, WHERE IS" with no warranty or guarantees, expressed or implied, No operational assessments have been made by DPA Auctions on this item, it has been photographed ONLY.



### #170 - Bobcat 742B Skid Steer (NJP1070, Unit 91854)

Bobcat 742B Skid Steer (NJP1070, Unit 91854), gas engine, joystick controls, open cab, approx. 5' bucket, rubber tires. Notes: Skid steer does have a hydraulic oil leak, contact seller for more details. Item Location: Chester, NE 68327 Equipment Sold "AS IS, WHERE IS": All equipment/property is sold "AS IS, WHERE IS" with no warranty or guarantees, expressed or implied, No operational assessments have been made by DPA Auctions on this item, it has been photographed ONLY.



### #171 - 2016 Adams Conveyor (DR7876)

2016 Adams Conveyor (DR7876), 30' stainless steel portable belt conveyor, 24" cleated belt, top drive electric motor, 3 phase, starter box. Notes: Item Location: Cozad, NE 69130 Equipment Sold "AS IS, WHERE IS": All equipment/property is sold "AS IS, WHERE IS" with no warranty or guarantees, expressed or implied, No operational assessments have been made by DPA Auctions on this item, it has been photographed ONLY.



### #172 - 2016 Adams Under Car (DR7877)

2016 Adams Under Car (DR7877), stainless steel portable under car unloader, 7.5hp electric drive motor, 3 phase, starter box, cleated belt, tongue end dolly wheels. Notes: Item Location: Cozad, NE 69130 Equipment Sold "AS IS, WHERE IS": All equipment/property is sold "AS IS, WHERE IS" with no warranty or guarantees, expressed or implied, No operational assessments have been made by DPA Auctions on this item, it has been photographed ONLY.



### #173 - 2013 Ford F-150 XLT (TR4045)

2013 Ford F-150 XLT (TR4045), 5.0L V8 gas engine, Supercab, Style side, Automatic 6 speed transmission, Flex Fuel, Gray cloth interior, 4WD, Aux, CD/AM/FM radio, 3.73 axle ratio, compass, cruise control, heat/AC, keyless entry, power windows/locks/ seats, 27,000 miles. Notes: Item Location: Laurel, NE 68745 Equipment Sold "AS IS, WHERE IS": All equipment/property is sold "AS IS, WHERE IS" with no warranty or guarantees, expressed or implied, No operational assessments have been made by DPA Auctions on this item, it has been photographed ONLY.



### #174 - 2017 South Bay 222 E (PD1063)

2017 South Bay 222 E (PD1063), Mercury pre rig, black out rails, bimini top, filler bench, ski tow bar, LED docking lights, portable cupholders, wood grain steering wheel, cover. Notes: 115 motor capacity, MOTOR NOT INCLUDED. Contact seller for motor options. Item Location: Valley, NE 68064 Equipment Sold "AS IS, WHERE IS": All equipment/property is sold "AS IS, WHERE IS" with no warranty or guarantees, expressed or implied, No operational assessments have been made by DPA Auctions on this item, it has been photographed ONLY.



### #175 - 2012 GMC Acadia (TR4046)

2012 GMC Acadia (TR4046), 3.6L V6 gas engine, 6 speed automatic transmission, AM/FM CD radio, Aux, Climate control, rear climate control, 3rd row seating, charcoal interior, heat/AC, cruise control, bucket seats, leather interior, AWD, 93,000 miles. Notes: Item Location: Laurel, NE 68745 Equipment Sold "AS IS, WHERE IS": All equipment/property is sold "AS IS, WHERE IS" with no warranty or guarantees, expressed or implied, No operational assessments have been made by DPA Auctions on this item, it has been photographed ONLY.



### #176 - 2004 John Deere 1690 (DR8146)

2004 John Deere 1690 (DR8146), 40' air seeder, 15" spacings, Hauko markers, seed star seed boots 50%, 17 1/4" blades, dual flotation tires. Notes: Gauge wheel tires need REPLACED. Item Location: Pender, NE 68047 Equipment Sold "AS IS, WHERE IS": All equipment/property is sold "AS IS, WHERE IS" with no warranty or guarantees, expressed or implied, No operational assessments have been made by DPA Auctions on this item, it has been photographed ONLY.



### #177 - 2014 Challenger MT675D Tractor (DR8147)

2014 Challenger MT675D Tractor (DR8147), MFWD, 275 hp diesel engine, CUT transmission, shuttle shift drive, front suspended axle, 5 SVC outlets, 1000 PTO, quick hitch, 2 pair 500lb rear axle weights, 24 front suitcase weights, 380/80R38 front tires, 480/80R50 rear tires & duals, shows 261 hours. Notes: Item Location: Pender, NE 68047 Equipment Sold "AS IS, WHERE IS": All equipment/property is sold "AS IS, WHERE IS" with no warranty or guarantees, expressed or implied, No operational assessments have been made by DPA Auctions on this item, it has been photographed ONLY.



### #178 - 1993 Ranco Belly Dump Trailer (DR8145)

1993 Ranco Belly Dump Trailer (DR8145), 40' dual air operated belly gates, tandem axle, spring suspension, rear push bar, good brakes, 22.5 tires. Notes: Item Location: Pender, NE 68047 Equipment Sold "AS IS, WHERE IS": All equipment/property is sold "AS IS, WHERE IS" with no warranty or guarantees, expressed or implied, No operational assessments have been made by DPA Auctions on this item, it has been photographed ONLY.



### #179 - 2007 John Deere 4930 (DR8127)

2007 John Deere 4930 (DR8127), John Deere diesel engine, hydrostatic drive, 1200 gallon stainless steel liquid system, 90' boom, 5 way nozzle bodies, foam markers, stainless steel chemical inductor, Green Star controller, StarFire iTC globe, Raven Side Kick, cab heat/air conditioning, AM/FM CD radio, 380/105R50 tires, shows 5988 hours. Notes: Item Location: Clinton, WI 53525 Equipment Sold "AS IS, WHERE IS": All equipment/property is sold "AS IS, WHERE IS" with no warranty or guarantees, expressed or implied, No operational assessments have been made by DPA Auctions on this item, it has been photographed ONLY.



### #180 - Graco Kettle (DR8133)

Graco Kettle (DR8133), Perkins diesel engine power unit, good burner and pump, single axle gear, shows 2423 hours. Notes: Item Location: Genoa, WI 54632 Equipment Sold "AS IS, WHERE IS": All equipment/property is sold "AS IS, WHERE IS" with no warranty or guarantees, expressed or implied, No operational assessments have been made by DPA Auctions on this item, it has been photographed ONLY.



### #181 - Case 621D (DR8132)

Case 621D (DR8132), diesel engine, shuttle shift transmission, good tight pins, JRB hydraulic quick tack bucket, quick tack forks, heat/ air conditioning work great, AM/FM radio, shows 9775 hours, 20.5-25 hours. Notes: All fluids have just been changed on complete fresh service. Item Location: Genoa, WI 54632 Equipment Sold "AS IS, WHERE IS": All equipment/property is sold "AS IS, WHERE IS" with no warranty or guarantees, expressed or implied, No operational assessments have been made by DPA Auctions on this item, it has been photographed ONLY.



### #183 - Cat (DR8138)

Cat (DR8138), LP gas engine, shuttle drive, 2 stage mast, 3000 lb capacity, OROPS, hard tires. Notes: Item Location: Ferryville, WI 54628 Equipment Sold "AS IS, WHERE IS": All equipment/property is sold "AS IS, WHERE IS" with no warranty or guarantees, expressed or implied, No operational assessments have been made by DPA Auctions on this item, it has been photographed ONLY.



### #184 - Lowry Dump Pit (DR8135)

Lowry Dump Pit (DR8135), steel dump pit w/10" incline auger, top drive electric motor. Notes: Item Location: Ferryville, WI 54628 Equipment Sold "AS IS, WHERE IS": All equipment/property is sold "AS IS, WHERE IS" with no warranty or guarantees, expressed or implied, No operational assessments have been made by DPA Auctions on this item, it has been photographed ONLY.



### #185 - Bin Jacks (DR8139)

Bin Jacks (DR8139), (4) hand crank heavy frame bin jacks. Notes: Item Location: Ferryville, WI 54628 Equipment Sold "AS IS, WHERE IS": All equipment/property is sold "AS IS, WHERE IS" with no warranty or guarantees, expressed or implied, No operational assessments have been made by DPA Auctions on this item, it has been photographed ONLY.



### #186 - Kinze 3600 (DR8134)

Kinze 3600 (DR8134), 12 row 30" spacing, tooth rear wheels and Martin-tin trash whips, hydraulic fold, Precision Delta force individual row down pressure, V meter drive electric row units, Precision 2020 controller, hydraulic markers, seed box extensions, fertilizer boxes. Kinze 3600 (DR8134), 12 row 30" spacing, tooth rear wheels and Martin-tin trash whips, hydraulic fold, Precision Delta force individual row down pressure, V meter drive electric row units, Precision 2020 controller, hydraulic markers, seed box extensions, fertilizer boxes. Notes: Lots of toys on this planter. Item Location: Ferryville, WI 54628 Equipment Sold "AS IS, WHERE IS": All equipment/property is sold "AS IS, WHERE IS" with no warranty or guarantees, expressed or implied, No operational assessments have been made by DPA Auctions on this item, it has been photographed ONLY.



### #187 - 2017 South Bay 222 RS (PD1064)

2017 South Bay 222 RS (PD1064), grey vinyl weave flooring, LED docking lights, filler bench, Mercury pre rig, ski tow bar, bimini top, portable cupholders, cover. Notes: 115 motor capacity, MOTOR NOT INCLUDED. Contact seller for motor options. Item Location: Valley, NE 68064 Equipment Sold "AS IS, WHERE IS": All equipment/property is sold "AS IS, WHERE IS" with no warranty or guarantees, expressed or implied, No operational assessments have been made by DPA Auctions on this item, it has been photographed ONLY.



### #188 - Planter Boxes (DR8140)

Planter Boxes (DR8140), (12) Kinze planter boxes set up with V meters. Notes: Item Location: Ferryville, WI 54628 Equipment Sold "AS IS, WHERE IS": All equipment/property is sold "AS IS, WHERE IS" with no warranty or guarantees, expressed or implied, No operational assessments have been made by DPA Auctions on this item, it has been photographed ONLY.



### #189 - Allis Chalmers D17 (DR8137)

Allis Chalmers D17 (DR8137), Series III, gas engine, 4 speed transmission, wide front, 540 PTO, hydraulic outlets, rear 2 point IS NOT complete, 16.9-28 rear tires. Notes: Item Location: Ferryville, WI 54628 Equipment Sold "AS IS, WHERE IS": All equipment/property is sold "AS IS, WHERE IS" with no warranty or guarantees, expressed or implied, No operational assessments have been made by DPA Auctions on this item, it has been photographed ONLY.



### #190 - 1984 Ravens (DR8136)

1984 Ravens (DR8136), 45' X 96" aluminum flatbed, spread axle, air ride suspension, side winch boxes, 24.5 tires, Budd wheels. Notes: Item Location: Ferryville, WI 54628 Equipment Sold "AS IS, WHERE IS": All equipment/property is sold "AS IS, WHERE IS" with no warranty or guarantees, expressed or implied, No operational assessments have been made by DPA Auctions on this item, it has been photographed ONLY.



### #191 - 1998 B&B Skid Loader (DR8143)

1998 B&B Skid Loader (DR8143), 16' tandem axle skid loader trailer, rear fold down ramps, D ring tie downs, ladder racks, bumper hitch, 15" tires. Notes: Trailer HAS NO TITLE. Fuel tank in pictures SELLS SEPERATLY. Item Location: Ferryville, WI 54628 Equipment Sold "AS IS, WHERE IS": All equipment/property is sold "AS IS, WHERE IS" with no warranty or guarantees, expressed or implied, No operational assessments have been made by DPA Auctions on this item, it has been photographed ONLY.



### #192 - Peterbilt Hood (DR8141)

Peterbilt Hood (DR8141), aluminum 379 Peterbilt hood, minor fender damage. Notes: Item Location: Ferryville, WI 54628 Equipment Sold "AS IS, WHERE IS": All equipment/property is sold "AS IS, WHERE IS" with no warranty or guarantees, expressed or implied, No operational assessments have been made by DPA Auctions on this item, it has been photographed ONLY.



### #193 - Generator/Welder (DR8142)

Generator/Welder (DR8142), Thermal Arc portable generator/welder, Honda gas engine, shows 141 hours. Notes: Owner believes hours to be actual. Item Location: Ferryville, WI 54628 Equipment Sold "AS IS, WHERE IS": All equipment/property is sold "AS IS, WHERE IS" with no warranty or guarantees, expressed or implied, No operational assessments have been made by DPA Auctions on this item, it has been photographed ONLY.



### #194 - Fuel Tank (DR8144)

Fuel Tank (DR8144), 150 gallon fuel tank, 12 volt metered pump. Notes: Item Location: Ferryville, WI 54628 Equipment Sold "AS IS, WHERE IS": All equipment/property is sold "AS IS, WHERE IS" with no warranty or guarantees, expressed or implied, No operational assessments have been made by DPA Auctions on this item, it has been photographed ONLY.



### #195 - Hopper (DR8116)

Hopper (DR8116), poly auger hopper. Notes: Item Location: Warren, IL 61087 Equipment Sold "AS IS, WHERE IS": All equipment/property is sold "AS IS, WHERE IS" with no warranty or guarantees, expressed or implied, No operational assessments have been made by DPA Auctions on this item, it has been photographed ONLY.



### #196 - Flighting (DR8109)

Flighting (DR8109) (6) pieces of 6" flighting 13.5' long. Notes: Item Location: Warren, IL 61087 Equipment Sold "AS IS, WHERE IS": All equipment/property is sold "AS IS, WHERE IS" with no warranty or guarantees, expressed or implied, No operational assessments have been made by DPA Auctions on this item, it has been photographed ONLY.



### #197 - Receiving Leg (DR8121)

Receiving Leg (DR8121), 35' grain leg, 12" X 7" X5" cups, has belt and cups. Notes: Item Location: Warren, IL 61087 Equipment Sold "AS IS, WHERE IS": All equipment/property is sold "AS IS, WHERE IS" with no warranty or guarantees, expressed or implied, No operational assessments have been made by DPA Auctions on this item, it has been photographed ONLY.



### #198 - Overhead Hopper (DR8124)

Overhead Hopper (DR8124), 12' X 10', 475 bushel hopper bin. Notes: Item Location: Warren, IL 61087 Equipment Sold "AS IS, WHERE IS": All equipment/property is sold "AS IS, WHERE IS" with no warranty or guarantees, expressed or implied, No operational assessments have been made by DPA Auctions on this item, it has been photographed ONLY.



### #199 - Overhead Hopper (DR8125)

Overhead Hopper (DR8125), 12' X 10', 475 bushel hopper bin. Notes: This bin is dismantled. Item Location: Warren, IL 61087 Equipment Sold "AS IS, WHERE IS": All equipment/property is sold "AS IS, WHERE IS" with no warranty or guarantees, expressed or implied, No operational assessments have been made by DPA Auctions on this item, it has been photographed ONLY.



### #200 - Liquid Pump (NJP484)

Liquid Pump (NJP484), 3x3 liquid pump and motor, 3 phase. Notes: Item Location: Fairbury, NE 68352 Equipment Sold "AS IS, WHERE IS": All equipment/property is sold "AS IS, WHERE IS" with no warranty or guarantees, expressed or implied, No operational assessments have been made by DPA Auctions on this item, it has been photographed ONLY.



### #201 - Liquid Blender (NJP485)

Liquid Blender (NJP485), 10 ton liquid blender, steel stand, IQ Plus 355 scale head. Notes: This item must be removed by March 18, 2018, no exceptions. Dismantle, removal and transportation is that expense, risk and liability of the buyer. Item Location: Fairbury, NE 68352 Equipment Sold "AS IS, WHERE IS": All equipment/property is sold "AS IS, WHERE IS" with no warranty or guarantees, expressed or implied, No operational assessments have been made by DPA Auctions on this item, it has been photographed ONLY.



### #202 - Willmar Dry Tender Box (PZ8179)

Willmar Dry Tender Box (PZ8179), 10 ton capacity, roll tarp. Notes: NO auger. Item Location: Altamont, IL 62411 Equipment Sold "AS IS, WHERE IS": All equipment/property is sold "AS IS, WHERE IS" with no warranty or guarantees, expressed or implied, No operational assessments have been made by DPA Auctions on this item, it has been photographed ONLY.



### #203 - Kraus Portable Belt Conveyor (PZ8180)

Kraus Portable Belt Conveyor (PZ8180), approx. 60' x 24" belt conveyor, 15HP electric motor. Notes: Item Location: Greenville, IL 62246 Equipment Sold "AS IS, WHERE IS": All equipment/property is sold "AS IS, WHERE IS" with no warranty or guarantees, expressed or implied, No operational assessments have been made by DPA Auctions on this item, it has been photographed ONLY.



### #204 - Adams Portable Belt Conveyor (PZ8182)

Adams Portable Belt Conveyor (PZ8182), approx. 30' x 24" belt conveyor, 3HP electric motor. Notes: Item Location: Vandalia, IL 62471 Equipment Sold "AS IS, WHERE IS": All equipment/property is sold "AS IS, WHERE IS" with no warranty or guarantees, expressed or implied, No operational assessments have been made by DPA Auctions on this item, it has been photographed ONLY.



### #205 - Hutchinson/Mayrath Portable Seed Conveyor (PZ8181)

Hutchinson/Mayrath Portable Seed Conveyor (PZ8181), approx. 65' x 12" belt conveyor, 10HP electric motor. Notes: Item Location: Mulberry Grove, IL 62262 Equipment Sold "AS IS, WHERE IS": All equipment/property is sold "AS IS, WHERE IS" with no warranty or guarantees, expressed or implied, No operational assessments have been made by DPA Auctions on this item, it has been photographed ONLY.





### #206 - USC LP800 Mobile Seed Treater (PZ8183)

USC LP800 Mobile Seed Treater (PZ8183), (2) minibulk capacity hopper, Seed Coating System, Inoculant Coating System, spill containment tarp for ground, KSI Model 1208 27 unload conveyor, electric motor, KSI Model 1208 17 load conveyor, electric motor, tandem axle bumper hitch trailer, wood deck, 20' length, 3,500lb axles, diamond plate storage boxes. Notes: Item Location: Mulberry Grove, IL 62262 Equipment Sold "AS IS, WHERE IS": All equipment/property is sold "AS IS, WHERE IS" with no warranty or guarantees, expressed or implied, No operational assessments have been made by DPA Auctions on this item, it has been photographed ONLY.



### #207 - 2017 South Bay 224 E (PD1065)

2017 South Bay 224 E (PD1065), 2.75 performance package, vinyl weave flooring, black out rails, bimini top, in floor storage, Hummingbird fish finder/depth sounder, filler bench, Mercury pre rig, LED docking lights, ski tow bar, cover. Notes: 200 motor capacity, MOTOR NOT INCLUDED. Contact seller for motor options. Item Location: Valley, NE 68064 Equipment Sold "AS IS, WHERE IS": All equipment/property is sold "AS IS, WHERE IS" with no warranty or guarantees, expressed or implied, No operational assessments have been made by DPA Auctions on this item, it has been photographed ONLY.



### #208 - 1996 Terra Gator 1844 Dry Floater (PZ8194)

1996 Terra Gator 1844 Dry Floater (PZ8194), 3208T Cat diesel engine, Allison 6 speed automatic transmission, air conditioning, heat, Am/Fm radio, New Leader L2020GT dry spreader box, belt over chain, twin spinner, all hydraulic, New Leader DP6 monitor, shows 6853 hours. Notes: Bed needs relined or replaced. Item Location: Freedom, IN 47431 Equipment Sold "AS IS, WHERE IS": All equipment/property is sold "AS IS, WHERE IS" with no warranty or guarantees, expressed or implied, No operational assessments have been made by DPA Auctions on this item, it has been photographed ONLY.



### #209 - 2015 Berco 60" Universal Rotary Broom (KMK451)

2015 Berco 60" Universal Rotary Broom (KMK451), simplified universal mount for your ATV or UTV, requires 2" rear ball hitch and winch (1,000 lbs. or more), side wheel kit, electric lift, power swing, electronic control operated from the drivers seat, stiff polypropylene brush, Kohler Command Pro 7, 208 cc. Notes: Perfect for cleaning, raking leaves, lawn dethatching, and even light snow removal. Item Location: Nichols, IA 52766 Equipment Sold "AS IS, WHERE IS": All equipment/property is sold "AS IS, WHERE IS" with no warranty or guarantees, expressed or implied, No operational assessments have been made by DPA Auctions on this item, it has been photographed ONLY.



### #210 - 2013 Brock's Quantum Dryer Controller (KMK354)

2013 Brock's Quantum Dryer Controller (KMK354), provides total dryer management, accurately controls grain moisture during the drying process, web-based monitoring apps, compatible with Brock dryers, Meyer Energy Miser, Super B Energy Miser, and SQ series dryers, includes controller shed, complete Quantum controller electrical installation and wiring diagrams. Notes: This Item must be removed by 4/13/2018 with no exceptions. Dismantle, removal and transportation is at the expense, risk and liability of the buyer. Item Location: Nichols, IA 52766 Equipment Sold "AS IS, WHERE IS": All equipment/property is sold "AS IS, WHERE IS" with no warranty or guarantees, expressed or implied, No operational assessments have been made by DPA Auctions on this item, it has been photographed ONLY.



### #211 - 2009 Westfield MK 100-71 (KMK452)

2009 Westfield MK 100-71 (KMK452), portable grain auger, 10" auger diameter, 71' auger length, hydraulic lift, low profile swing away hopper, 540 pto. Notes: Just upgraded to a new one. Used this last fall and worked good. Item Location: Nichols, IA 52766 Equipment Sold "AS IS, WHERE IS": All equipment/property is sold "AS IS, WHERE IS" with no warranty or guarantees, expressed or implied, No operational assessments have been made by DPA Auctions on this item, it has been photographed ONLY.



### #212 - 20' Aluminum Livestock Truck Body (DL197)

20' Aluminum Livestock Truck Body (DL197). Notes: Item Location: Riceville, IA 50466 Equipment Sold "AS IS, WHERE IS": All equipment/property is sold "AS IS, WHERE IS" with no warranty or guarantees, expressed or implied, No operational assessments have been made by DPA Auctions on this item, it has been photographed ONLY.



### #213 - 1995 International 8100 (DL198)

1995 International 8100 (DL198), Cummins diesel engine, 7 speed transmission, AM/FM cassette radio, air brakes, 11R-22.5 tires at 75% tread, tandem axle, full screw, Tyler 2 compartment 4 bin stainless steel hydraulic dry fertilizer box, side shooter auger, roll over tarp, rear bumper hitch, air conditioning, rear bumper hitch, shows about 350,000 miles. Notes: Item Location: Riceville, IA 50466 Equipment Sold "AS IS, WHERE IS": All equipment/property is sold "AS IS, WHERE IS" with no warranty or guarantees, expressed or implied, No operational assessments have been made by DPA Auctions on this item, it has been photographed ONLY.



---

### #214 - Nissan CPJ02A25V Forklift (DL180)

Nissan CPJ02A25V Forklift (DL180), 12,310 hours, 3 stage mast w/hydraulic sideshift, 48" forks. Notes: Hydraulic leaks. There is also a transmission coolant line leaking. Forklift runs but has a miss. Reason for selling is company is switching to all electric forklifts. Item Location: Boone, IA 50036 Equipment Sold "AS IS, WHERE IS": All equipment/property is sold "AS IS, WHERE IS" with no warranty or guarantees, expressed or implied, No operational assessments have been made by DPA Auctions on this item, it has been photographed ONLY.



---

### #215 - 2005 New Leader 3220G4 Box (EG401)

2005 New Leader 3220G4 Box (EG401), rebuilt gear box, new servo valve and spinner speed control, unit can have a second bed installed, new taillights, fresh oil and filters, unit came off an 8103 Terra Gator, can be installed on existing chassis. Notes: Item Location: Fort Dodge, IA 50501 Equipment Sold "AS IS, WHERE IS": All equipment/property is sold "AS IS, WHERE IS" with no warranty or guarantees, expressed or implied, No operational assessments have been made by DPA Auctions on this item, it has been photographed ONLY.



---

### #216 - 1995 Mid State 1550 Gallon Stainless Steel Tank and Saddle Unit (EG402)

1995 Mid State 1550 Gallon Stainless Steel Tank and Saddle Unit (EG402), tank is baffled and vented, unit came off Terra Gator. Notes: Item Location: Fort Dodge, IA 50501 Equipment Sold "AS IS, WHERE IS": All equipment/property is sold "AS IS, WHERE IS" with no warranty or guarantees, expressed or implied, No operational assessments have been made by DPA Auctions on this item, it has been photographed ONLY.



---

### #217 - Seed Treating Equipment (TR4041)

Seed Treating Equipment (TR4041), Promag 53 flowmeter. Measures oz/ minute and total oz used per time, (2) pump heads and motors used to move fungicide and inoculant, 340 oz calibration tube, 5 gallon plastic tank that was used for inoculant. Notes: Item Location: Pleasanton, NE 68866 Equipment Sold "AS IS, WHERE IS": All equipment/property is sold "AS IS, WHERE IS" with no warranty or guarantees, expressed or implied, No operational assessments have been made by DPA Auctions on this item, it has been photographed ONLY.



---

### #218 - 1995 Al Jon Crusher (DR-4134)

1995 Al Jon Crusher (DR-4134), model LC90 hydraulic crusher, Cummins diesel engine, double outriggers. Notes: Item Location: Alvo, NE 68304 Equipment Sold "AS IS, WHERE IS": All equipment/property is sold "AS IS, WHERE IS" with no warranty or guarantees, expressed or implied, No operational assessments have been made by DPA Auctions on this item, it has been photographed ONLY.



---

### #219 - Titan RT GPS Monitor (MH247)

Titan RT GPS Monitor (MH247), was used for soil sampling. Notes: Item Location: Latimer, IA 50452 Equipment Sold "AS IS, WHERE IS": All equipment/property is sold "AS IS, WHERE IS" with no warranty or guarantees, expressed or implied, No operational assessments have been made by DPA Auctions on this item, it has been photographed ONLY.



---

### #220 - 2000 Great Dane Flatbed Trailer (TH204)

2000 Great Dane Flatbed Trailer (TH204), 53', spread axle, air ride suspension, 11R-22.5 tires, aluminum floor, aluminum cross members, 7 moveable winches. Notes: Item Location: Mountain Grove, MO 65711 Equipment Sold "AS IS, WHERE IS": All equipment/property is sold "AS IS, WHERE IS" with no warranty or guarantees, expressed or implied, No operational assessments have been made by DPA Auctions on this item, it has been photographed ONLY.



---

### #221 - 2007 Vantage Aluminum End Dump Trailer (TH207)

2007 Vantage Aluminum End Dump Trailer (TH207), 39', air ride suspension, 11R-24.5 tires, has poly liner, grain gate, light damage/ dent on left side, it was laid over while dumping, 54" sides. Notes: Brand new drums and brakes 1,000 miles ago. Item Location: Mountain Grove, MO 65711 Equipment Sold "AS IS, WHERE IS": All equipment/property is sold "AS IS, WHERE IS" with no warranty or guarantees, expressed or implied, No operational assessments have been made by DPA Auctions on this item, it has been photographed ONLY.



### #222 - 2006 Sterling Bucket Truck (MH246)

2006 Sterling Bucket Truck (MH246), C-7 Allison engine, automatic transmission, Altec model AA755L 8 door steel service box, 60ft hydraulic boom, 600# capacity 2 man bucket, ground & bucket controls, auxiliary controls, single axle, rear pintle hitch, AM/FM radio, air conditioning, air brakes, shows 132,896 odometer miles and 132,896 ecm miles, bucket S/N: 1105 BZ 3998 . Notes: Item Location: Paw Paw, MI 49079 Equipment Sold "AS IS, WHERE IS": All equipment/property is sold "AS IS, WHERE IS" with no warranty or guarantees, expressed or implied, No operational assessments have been made by DPA Auctions on this item, it has been photographed ONLY.



### #223 - 1977 320 Owatonna Skid Steer (AL223)

1977 320 Owatonna Skid Steer (AL223), new tires, low miles on engine overhaul, gas engine, 52" bucket. Notes: The hour meter is broken. Item Location: Williamsburg, IA 52361 Equipment Sold "AS IS, WHERE IS": All equipment/property is sold "AS IS, WHERE IS" with no warranty or guarantees, expressed or implied, No operational assessments have been made by DPA Auctions on this item, it has been photographed ONLY.



### #225 - Houck 750 Swing Hitch (DL200)

Houck 750 Swing Hitch (DL200), Recently removed from JD 750 drill - has all parts, in good condition, also fits John Deere 1560 and 1590 drills. Notes: Item Location: Polo, MO 64671 Equipment Sold "AS IS, WHERE IS": All equipment/property is sold "AS IS, WHERE IS" with no warranty or guarantees, expressed or implied, No operational assessments have been made by DPA Auctions on this item, it has been photographed ONLY.



### #226 - 2000 Ford Excursion XLT Ultra Limo

2000 Ford Excursion XLT Ultra Limo, V-10 Triton gas engine, automatic transmission, dual air conditioning, heat, power windows, locks and mirrors, cruise, 40' length, 20 person capacity, air ride, dual batteries and alternators, power windows and mirrors, driver controls for rear area, phone communications, privacy panel, rear controls, heat, air conditioning, lights, ceiling and bar areas, simulated fireplace, (2) TV's, accent/LED rope, leather seats, carpet, tires 90%, shows 112,977 miles. Notes: Stored Inside. Item Location: Hartington, NE 68739 Equipment Sold "AS IS, WHERE IS": All equipment/property is sold "AS IS, WHERE IS" with no warranty or guarantees, expressed or implied, No operational assessments have been made by DPA Auctions on this item, it has been photographed ONLY.



### #227 - LOR-AL Air Max V (ED405)

LOR-AL Air Max V (ED405), 10 ton airflow box, 60 foot boom, roll tarp, in working condition when removed from chassis, Running Gear IS NOT INCLUDED. Notes: Running Gear NOT INCLUDED. Seller will load by appointment. Item Location: Bird Island, MN 55310 Equipment Sold "AS IS, WHERE IS": All equipment/property is sold "AS IS, WHERE IS" with no warranty or guarantees, expressed or implied, No operational assessments have been made by DPA Auctions on this item, it has been photographed ONLY.



### #228 - LOR-AL Air Max 1000 (ED406)

LOR-AL Air Max 1000 (ED406), 10 ton airflow box, 70 foot boom, roll tarp, in working condition when removed from chassis, running gear IS NOT INCLUDED. Notes: Running Gear IS NOT INCLUDED. Seller will load by appointment. Item Location: Bird Island, MN 55310 Equipment Sold "AS IS, WHERE IS": All equipment/property is sold "AS IS, WHERE IS" with no warranty or guarantees, expressed or implied, No operational assessments have been made by DPA Auctions on this item, it has been photographed ONLY.



### #229 - 3200 Gallon Stainless Steel Tank (ED 404)

3200 Gallon Stainless Steel Tank (ED 404), former milk truck tank. Notes: Seller will load by appointment. Item Location: Bird Island, MN 55310 Equipment Sold "AS IS, WHERE IS": All equipment/property is sold "AS IS, WHERE IS" with no warranty or guarantees, expressed or implied, No operational assessments have been made by DPA Auctions on this item, it has been photographed ONLY.



### #230 - New Leader DP6 Plus Dual Product Rate Controller (AL226)

New Leader DP6 Plus Dual Product Rate Controller (AL226). Notes: Item Location: Princeton, IL 61356 Equipment Sold "AS IS, WHERE IS": All equipment/property is sold "AS IS, WHERE IS" with no warranty or guarantees, expressed or implied, No operational assessments have been made by DPA Auctions on this item, it has been photographed ONLY.



### #231 - John Deere 1770NT CCS High Speed 16 Row 30 Inch Planter COMPLETE REBUILD (PD605)

John Deere 1770NT CCS High Speed 16 Row 30 Inch Planter COMPLETE REBUILD (PD605), This is a new install of Precision Planting 20/20 Gen 2, Vdrive, DeltaForce, & SpeedTube on top of a complete rebuild of ENTIRE row units. This is like buying a brand new planter for nearly under half the price! Can be customize to fit your needs after the purchase (liquid fertilizer, row cleaners, etc...)New parts include: Precision Planting parts (gen 2 20/20 monitor, tractor cab wiring, Vdrive, DeltaForce, SpeedTube) parallel arm system, disk openers, gauge wheels, seed tube guards, transport tires, new seed delivery hoses, sale price is for factory closing wheel system however, we can customize closers for price difference. Original parts include 1770NT CCS frame, frame hydraulic system, transport wheels (tires new), 16 shanks & 16 row unit mounting plates, CCS tanks, CCS blower, and vac systems. We have invested over \$70,000 in new parts and upgrades to make this planter like brand new and state of the art!!!Pictures and video taken a few days prior to project completion, planter will be field ready for the buyer! Notes: Free Shipping up to 200 miles from Carrollton, Missouri, remaining mileage will be the responsibility of the buyer. Item Location: Carrollton, MO 64633 Equipment Sold "AS IS, WHERE IS": All equipment/property is sold "AS IS, WHERE IS" with no warranty or guarantees, expressed or implied, No operational assessments have been made by DPA Auctions on this item, it has been photographed ONLY.



### #232 - 2009 Kenworth T800 Day Cab (AL222)

2009 Kenworth T800 Day Cab (AL222), Cummins, 10 speed transmission, AM/FM radio, tandem axle, 11R225 tires, all aluminum, engine break, heat/ac, air ride suspension and cab, wet kit, pinned fifth wheel, wheel base 205", dual exhaust, 120 fuel tank, virgin tires, toolbox, full fenders, new clutch, new brakes and drums, radiator 1 year old, steer tires are 60%, front drives 40%, rear drives 75%, shows 809,174 miles. Notes: Item Location: Ladd, IL 61329 Equipment Sold "AS IS, WHERE IS": All equipment/property is sold "AS IS, WHERE IS" with no warranty or guarantees, expressed or implied, No operational assessments have been made by DPA Auctions on this item, it has been photographed ONLY.



### #233 - 2000 Chevrolet C8500 Flatbed Truck (NJP493, Unit 39)

2000 Chevrolet C8500 Flatbed Truck (NJP493, Unit 39), diesel engine, 8 speed + Lo & Lo-Lo transmission, air conditioning, heat, Am/Fm radio, tandem axle, steel flatbed, 11R22.5 tires, shows 276,580 miles. Notes: Item Location: Belleville, IL 62222 Equipment Sold "AS IS, WHERE IS": All equipment/property is sold "AS IS, WHERE IS" with no warranty or guarantees, expressed or implied, No operational assessments have been made by DPA Auctions on this item, it has been photographed ONLY.



### #234 - Outdoor Lights (NJP1033)

NEW Lights Wall Packs (NJP1033), 150 watt. Notes: Item Location: Belleville, IL 62222 Equipment Sold "AS IS, WHERE IS": All equipment/property is sold "AS IS, WHERE IS" with no warranty or guarantees, expressed or implied, No operational assessments have been made by DPA Auctions on this item, it has been photographed ONLY.



### #235 - Shop Lights (NJP1034)

Shop Lights (NJP1034), 6 Pallets of shop lights. Notes: Item Location: Belleville, IL 62222 Equipment Sold "AS IS, WHERE IS": All equipment/property is sold "AS IS, WHERE IS" with no warranty or guarantees, expressed or implied, No operational assessments have been made by DPA Auctions on this item, it has been photographed ONLY.



### #236 - Hagie Parts (NJP1037)

Hagie Parts (NJP1037) Pallet of Hagie parts. Notes: Item Location: Belleville, IL 62222 Equipment Sold "AS IS, WHERE IS": All equipment/property is sold "AS IS, WHERE IS" with no warranty or guarantees, expressed or implied, No operational assessments have been made by DPA Auctions on this item, it has been photographed ONLY.



### #237 - Parts (NJP1040)

Parts (NJP1040), Pallet of CaseIH Patriot Parts off 3200. Notes: Item Location: Belleville, IL 62222 Equipment Sold "AS IS, WHERE IS": All equipment/property is sold "AS IS, WHERE IS" with no warranty or guarantees, expressed or implied, No operational assessments have been made by DPA Auctions on this item, it has been photographed ONLY.



### #238 - New Hercules Tire (NJP 499)

New Hercules Tire (NJP 499), 1 - New Hercules 12R22.5 tire. Notes: Item Location: Belleville, IL 62222 Equipment Sold "AS IS, WHERE IS": All equipment/property is sold "AS IS, WHERE IS" with no warranty or guarantees, expressed or implied, No operational assessments have been made by DPA Auctions on this item, it has been photographed ONLY.





### #239 - 4 Tires (NJP500)

4 Tires (NJP500), 2 - Dunhill 10.00-15 tire, 1 - 10.00 - 20 tire, 1 - Power King 9.00-20 tire. Notes: Item Location: Belleville, IL 62222 Equipment Sold "AS IS, WHERE IS": All equipment/property is sold "AS IS, WHERE IS" with no warranty or guarantees, expressed or implied, No operational assessments have been made by DPA Auctions on this item, it has been photographed ONLY.



### #240 - 3 Tires (NJP1000)

3 Tires (NJP1000), (1) NEW Dayton 295/75R22.5 tire, (2) Used Dayton 295/75R22.5 tires. Notes: Item Location: Belleville, IL 62222 Equipment Sold "AS IS, WHERE IS": All equipment/property is sold "AS IS, WHERE IS" with no warranty or guarantees, expressed or implied, No operational assessments have been made by DPA Auctions on this item, it has been photographed ONLY.



### #241 - 2 Tires (NJP1001)

2 Tires (NJP1001), 2 - Continental 275/80R22.5 tires. Notes: Item Location: Belleville, IL 62222 Equipment Sold "AS IS, WHERE IS": All equipment/property is sold "AS IS, WHERE IS" with no warranty or guarantees, expressed or implied, No operational assessments have been made by DPA Auctions on this item, it has been photographed ONLY.



### #242 - Tire (NJP1002)

Tire (NJP1002), 1 - Armstrong 18.4-26 tire. Notes: Item Location: Belleville, IL 62222 Equipment Sold "AS IS, WHERE IS": All equipment/property is sold "AS IS, WHERE IS" with no warranty or guarantees, expressed or implied, No operational assessments have been made by DPA Auctions on this item, it has been photographed ONLY.



### #243 - New Tire (NJP1003)

New Tire (NJP1003), 1 - New Firestone 480/85R34 tire. Notes: Item Location: Belleville, IL 62222 Equipment Sold "AS IS, WHERE IS": All equipment/property is sold "AS IS, WHERE IS" with no warranty or guarantees, expressed or implied, No operational assessments have been made by DPA Auctions on this item, it has been photographed ONLY.



### #244 - New Tire (NJP1004)

New Tire (NJP1004), 1 - New Firestone 16.9-26 tire. Notes: Item Location: Belleville, IL 62222 Equipment Sold "AS IS, WHERE IS": All equipment/property is sold "AS IS, WHERE IS" with no warranty or guarantees, expressed or implied, No operational assessments have been made by DPA Auctions on this item, it has been photographed ONLY.



### #245 - New Tire (NJP1005)

New Tire (NJP1005), 1 - New Firestone 13.6-24 tire. Notes: Item Location: Belleville, IL 62222 Equipment Sold "AS IS, WHERE IS": All equipment/property is sold "AS IS, WHERE IS" with no warranty or guarantees, expressed or implied, No operational assessments have been made by DPA Auctions on this item, it has been photographed ONLY.



### #246 - New Tire (NJP1006)

New Tire (NJP1006), 1 - New Titan 14.9-28 tire. Notes: Item Location: Belleville, IL 62222 Equipment Sold "AS IS, WHERE IS": All equipment/property is sold "AS IS, WHERE IS" with no warranty or guarantees, expressed or implied, No operational assessments have been made by DPA Auctions on this item, it has been photographed ONLY.



### #247 - Tires (NJP1007)

Tires (NJP1007), 5 - Good Year 320/85R34 tires (2 are NEW, 3 have 70% tread). Notes: Item Location: Belleville, IL 62222 Equipment Sold "AS IS, WHERE IS": All equipment/property is sold "AS IS, WHERE IS" with no warranty or guarantees, expressed or implied, No operational assessments have been made by DPA Auctions on this item, it has been photographed ONLY.



### #248 - Tire (NJP1008)

Tire (NJP1008), 1 - Good Year 13.6R28 tire, side wall repaired. Notes: Item Location: Belleville, IL 62222 Equipment Sold "AS IS, WHERE IS": All equipment/property is sold "AS IS, WHERE IS" with no warranty or guarantees, expressed or implied, No operational assessments have been made by DPA Auctions on this item, it has been photographed ONLY.



### #249 - New Tire (NJP1009)

New Tire (NJP1009), 1 - New Firestone 17.5L-24 tire. Notes: Item Location: Belleville, IL 62222 Equipment Sold "AS IS, WHERE IS": All equipment/property is sold "AS IS, WHERE IS" with no warranty or guarantees, expressed or implied, No operational assessments have been made by DPA Auctions on this item, it has been photographed ONLY.



### #250 - New Tires (NJP1018)

New Tires (NJP1018), 4 - Mastercraft 235/50R17 tires. Notes: Item Location: Belleville, IL 62222 Equipment Sold "AS IS, WHERE IS": All equipment/property is sold "AS IS, WHERE IS" with no warranty or guarantees, expressed or implied, No operational assessments have been made by DPA Auctions on this item, it has been photographed ONLY.



### #251 - Tires (NJP1013)

Tires (NJP1013), 4 - Uniroyals 205/70R14 tires, 1 - Bridgestone Signia P195/75R14 tire, 1 - Firestone 205/70R14 tire. Notes: Item Location: Belleville, IL 62222 Equipment Sold "AS IS, WHERE IS": All equipment/property is sold "AS IS, WHERE IS" with no warranty or guarantees, expressed or implied, No operational assessments have been made by DPA Auctions on this item, it has been photographed ONLY.



### #252 - Tires (NJP1014)

Tires (NJP1014), 2 - Mastercraft 245/60R18, 1 - General 225/70R19.5 tires. Notes: Item Location: Belleville, IL 62222 Equipment Sold "AS IS, WHERE IS": All equipment/property is sold "AS IS, WHERE IS" with no warranty or guarantees, expressed or implied, No operational assessments have been made by DPA Auctions on this item, it has been photographed ONLY.



### #253 - New Tire (NJP1016)

New Tire (NJP1016), 1 - New Agrimax 520/85R42 tire. Notes: Item Location: Belleville, IL 62222 Equipment Sold "AS IS, WHERE IS": All equipment/property is sold "AS IS, WHERE IS" with no warranty or guarantees, expressed or implied, No operational assessments have been made by DPA Auctions on this item, it has been photographed ONLY.



### #254 - New Tire (NJP1015)

New Tire (NJP1015), 1 - New Firestone 18.4-42 tire. Notes: Item Location: Belleville, IL 62222 Equipment Sold "AS IS, WHERE IS": All equipment/property is sold "AS IS, WHERE IS" with no warranty or guarantees, expressed or implied, No operational assessments have been made by DPA Auctions on this item, it has been photographed ONLY.



### #255 - Tires (NJP1025)

Tires (NJP1025), 1 - Michelin 225/55R17 tire, 3 - Good Year P225/60R16 tires, 2 - P245/75R16 tires. Notes: Item Location: Belleville, IL 62222 Equipment Sold "AS IS, WHERE IS": All equipment/property is sold "AS IS, WHERE IS" with no warranty or guarantees, expressed or implied, No operational assessments have been made by DPA Auctions on this item, it has been photographed ONLY.



### #256 - Tires (NJP1017)

Tires (NJP1017), 2 - Carlisle 8.5/90-15K tires, 1 - Firestone 9.5-16 tire. Notes: Item Location: Belleville, IL 62222 Equipment Sold "AS IS, WHERE IS": All equipment/property is sold "AS IS, WHERE IS" with no warranty or guarantees, expressed or implied, No operational assessments have been made by DPA Auctions on this item, it has been photographed ONLY.



### #257 - Tires (NJP1019)

Tires (NJP1019), 2 - Turf Glide 20x10.00-10 NHS tires, 2 - Farm Specialists 25x7.50-15 tires, 2 - FS Implement 11L-15 tires, 4 - Implements 11L-16 tires, 1 - Hankook 225/65R17 tire. Notes: Item Location: Belleville, IL 62222 Equipment Sold "AS IS, WHERE IS": All equipment/property is sold "AS IS, WHERE IS" with no warranty or guarantees, expressed or implied, No operational assessments have been made by DPA Auctions on this item, it has been photographed ONLY.



### #258 - Tires (NJP1020)

Tires (NJP1020), Industrial Trax 25x10.50-12 tires. Notes: Item Location: Belleville, IL 62222 Equipment Sold "AS IS, WHERE IS": All equipment/property is sold "AS IS, WHERE IS" with no warranty or guarantees, expressed or implied, No operational assessments have been made by DPA Auctions on this item, it has been photographed ONLY.



**#259 - Tires (NJP1023)**

Tires (NJP1023), 3- All Trail 25x10.50-12 tires, 2 - All Trail 25x8.50-12 tires, 1 - Stryker AT22x11-8 tire. Notes: Item Location: Belleville, IL 62222 Equipment Sold "AS IS, WHERE IS": All equipment/property is sold "AS IS, WHERE IS" with no warranty or guarantees, expressed or implied, No operational assessments have been made by DPA Auctions on this item, it has been photographed ONLY.

**#260 - Tires (NJP1021)**

Tires (NJP1021), Michelin 275/80R22.5 tires. Notes: Item Location: Belleville, IL 62222 Equipment Sold "AS IS, WHERE IS": All equipment/property is sold "AS IS, WHERE IS" with no warranty or guarantees, expressed or implied, No operational assessments have been made by DPA Auctions on this item, it has been photographed ONLY.

**#261 - Tires (NJP1022)**

Tires (NJP1022), 3 - New American Farmer 7.50-20SL tires. Notes: Item Location: Belleville, IL 62222 Equipment Sold "AS IS, WHERE IS": All equipment/property is sold "AS IS, WHERE IS" with no warranty or guarantees, expressed or implied, No operational assessments have been made by DPA Auctions on this item, it has been photographed ONLY.

**#262 - Tires (NJP1026)**

Tires (NJP1026), 2 - Multi Trac 27x8.50-15 tires, 2 - Multi Trac 25x8.50-14 tires, 2 - Multi Trac 24x8.50-14 tires, 1 - Multi Trac 23x8.50-12 tire, 1 - Turf CRT 22x11.00-8 tires. Notes: Item Location: Belleville, IL 62222 Equipment Sold "AS IS, WHERE IS": All equipment/property is sold "AS IS, WHERE IS" with no warranty or guarantees, expressed or implied, No operational assessments have been made by DPA Auctions on this item, it has been photographed ONLY.

**#263 - Tires (NJP1024)**

Tires (NJP1024), 5 - 26x12.00-12 tires. Notes: Item Location: Belleville, IL 62222 Equipment Sold "AS IS, WHERE IS": All equipment/property is sold "AS IS, WHERE IS" with no warranty or guarantees, expressed or implied, No operational assessments have been made by DPA Auctions on this item, it has been photographed ONLY.

**#264 - Tires (NJP1027)**

Tires (NJP1027), 4 - Firestone 11L-16 tires, Carlisle 7.50-10 tires. Notes: Item Location: Belleville, IL 62222 Equipment Sold "AS IS, WHERE IS": All equipment/property is sold "AS IS, WHERE IS" with no warranty or guarantees, expressed or implied, No operational assessments have been made by DPA Auctions on this item, it has been photographed ONLY.

**#265 - Tires (NJP1028)**

Tires (NJP1028), 1 - Good Year 9.5x16.5 tire, 1 - Range Runner 7.50-16 tire, 1 - Firestone 8.75x16.5 tire, trailer tires, 1 - 8.75x16.5 tire, 2 - 9.5x16.5 tires, 1 - Road Master 215/75R17.5 tire, 1 - Bridgestone 10R17.5 tire. Notes: Item Location: Belleville, IL 62222 Equipment Sold "AS IS, WHERE IS": All equipment/property is sold "AS IS, WHERE IS" with no warranty or guarantees, expressed or implied, No operational assessments have been made by DPA Auctions on this item, it has been photographed ONLY.

**#266 - Tires (NJP1029)**

Tires (NJP1029), 1 - Unico Redi Grip WT 7.00-13 tire, 1 - 5.00-15 tire, 1 - 8.00-16.5 tire. Notes: Item Location: Belleville, IL 62222 Equipment Sold "AS IS, WHERE IS": All equipment/property is sold "AS IS, WHERE IS" with no warranty or guarantees, expressed or implied, No operational assessments have been made by DPA Auctions on this item, it has been photographed ONLY.

**#267 - Tires (NJP1030)**

Tires (NJP1030), 4 - Traction Lug 7.60-15SL, 2 - Traction Lug 5.90-15SL tires, 1 - Denmann 7.50-15 TR tire. Notes: Item Location: Belleville, IL 62222 Equipment Sold "AS IS, WHERE IS": All equipment/property is sold "AS IS, WHERE IS" with no warranty or guarantees, expressed or implied, No operational assessments have been made by DPA Auctions on this item, it has been photographed ONLY.

**#268 - Tires (NJP1035)**

Tires (NJP1035), Pallet of small implement tires, various sizes. Notes: Item Location: Belleville, IL 62222 Equipment Sold "AS IS, WHERE IS": All equipment/property is sold "AS IS, WHERE IS" with no warranty or guarantees, expressed or implied, No operational assessments have been made by DPA Auctions on this item, it has been photographed ONLY.



### #269 - Tires (NJP 1012)

Tires (NJP 1012), 2 - Armstrong 25x7.50-15 tires, 3 - Titan 25x7.50-15 tires. Notes: Item Location: Belleville, IL 62222 Equipment Sold "AS IS, WHERE IS": All equipment/property is sold "AS IS, WHERE IS" with no warranty or guarantees, expressed or implied, No operational assessments have been made by DPA Auctions on this item, it has been photographed ONLY.



### #270 - Tires (NJP1011)

Tires (NJP1011), 1 - Yokohama 225/65R17 tire, 3 - Perilli 265/70R17 tires (1 New, 2 at 90%), 1 - Transforce HT LT245/70R17 tire, 1 - Wrangler 265/70R17 tire. Notes: Item Location: Belleville, IL 62222 Equipment Sold "AS IS, WHERE IS": All equipment/property is sold "AS IS, WHERE IS" with no warranty or guarantees, expressed or implied, No operational assessments have been made by DPA Auctions on this item, it has been photographed ONLY.



### #271 - Rims (NJP1010)

Rims (NJP1010), 1 - 16/24 rim drive lug, 1 - 28x11 rim. Notes: Item Location: Belleville, IL 62222 Equipment Sold "AS IS, WHERE IS": All equipment/property is sold "AS IS, WHERE IS" with no warranty or guarantees, expressed or implied, No operational assessments have been made by DPA Auctions on this item, it has been photographed ONLY.



### #272 - 11.8 Gallons Clariva pn Seed Treatment (KMK453)

11.8 Gallons Clariva pn Seed Treatment (KMK453), Clariva pn, syngenta, nematocide, biological control for use on soybean seed against soybean cyst nematode, 2.5 gallon jug, 9.3 gallon keg. Notes: Item Location: Nichols, IA 52766 Equipment Sold "AS IS, WHERE IS": All equipment/property is sold "AS IS, WHERE IS" with no warranty or guarantees, expressed or implied, No operational assessments have been made by DPA Auctions on this item, it has been photographed ONLY.



### #273 - New Mid State 3300 Gallon Liquid Tank (PZ8496)

New Mid State 3300 Gallon Liquid Tank (PZ8496), New - Mid-State 8660 Series stainless steel tank, 3300 gallon capacity, single compartment, heavy 12 gauge steel, sight gauge tubes, stainless steel capacity chart, stainless steel ladder, fully baffled, 2" sparger line, 16" man lid, 34" truck sills, full trough sump, 4" street side outlet, lift loops, mounting boards, Overall height 82", Shell length 182", Overall length 201", diameter 76", weight 2,480 lbs. Notes: Item Location: Hills, IA 52235 Equipment Sold "AS IS, WHERE IS": All equipment/property is sold "AS IS, WHERE IS" with no warranty or guarantees, expressed or implied, No operational assessments have been made by DPA Auctions on this item, it has been photographed ONLY.



### #275 - 15 Inch U Trough (ED408)

15 Inch U Trough (ED408), (8) 12 foot sections, total 96 ft., 15 inches wide, gear box and drive section, Falk Enclosed Gear Drive Model 2207J 14. Notes: Item Location: Shelbyville, IN 46176 Equipment Sold "AS IS, WHERE IS": All equipment/property is sold "AS IS, WHERE IS" with no warranty or guarantees, expressed or implied, No operational assessments have been made by DPA Auctions on this item, it has been photographed ONLY.



### #276 - Electric Distributor The Essmueller Company FB-45-10-10TE (ED409)

Electric Distributor The Essmueller Company FB-45-10-10TE (ED409), 10 inch, 10 hole. Notes: Item Location: Shelbyville, IN 46176 Equipment Sold "AS IS, WHERE IS": All equipment/property is sold "AS IS, WHERE IS" with no warranty or guarantees, expressed or implied, No operational assessments have been made by DPA Auctions on this item, it has been photographed ONLY.



### #277 - 2013 New Holland BB9060 Baler (ED407)

2013 New Holland BB9060 Baler (ED407), color monitor, steerable tandems, chemical applicator, same as new, less than 3000 bales. Notes: Item Location: Shelbyville, IN 46176 Equipment Sold "AS IS, WHERE IS": All equipment/property is sold "AS IS, WHERE IS" with no warranty or guarantees, expressed or implied, No operational assessments have been made by DPA Auctions on this item, it has been photographed ONLY.





### #277A - 1990 5.9 Cummins Engine (ED410)

1990 5.9 Cummins Engine (ED410), only 65,000 miles, removed from pickup to use for another piece of equipment and plans changed, everything connected to the motor and the radiator is included. Notes: Item Location: Shelbyville, IN 46176 Equipment Sold "AS IS, WHERE IS": All equipment/property is sold "AS IS, WHERE IS" with no warranty or guarantees, expressed or implied, No operational assessments have been made by DPA Auctions on this item, it has been photographed ONLY.



### #278 - 2011 John Deere 1890 Air Seeder (PD634)

2011 John Deere 1890 Air Seeder (PD634), 42', no till, floating hitch, parallel tracking compatibility, dual row spacing hydraulics, no till openers for excellent penetration, weight brackets allow for additional ballast, spoked gauge wheels, six working widths to fit any operation, relative flow blockage sensing. Notes: Item Location: Coleman County, TX 76828 Equipment Sold "AS IS, WHERE IS": All equipment/property is sold "AS IS, WHERE IS" with no warranty or guarantees, expressed or implied, No operational assessments have been made by DPA Auctions on this item, it has been photographed ONLY.



### #279 - Great Plains VT4000 Turbo Max Disk (PD633)

Great Plains VT4000 Turbo Max Disk (PD633), 40 foot working width between coulters, 7 1/2 inch blade spacing, features 2 gangs, 20 inch turbo coulters spaced 7 1/2 inches apart, rolling spike harrow tires, split turbo coulters, greaseless bearings. Notes: Item Location: Coleman County, TX 76828 Equipment Sold "AS IS, WHERE IS": All equipment/property is sold "AS IS, WHERE IS" with no warranty or guarantees, expressed or implied, No operational assessments have been made by DPA Auctions on this item, it has been photographed ONLY.



### #280 - 2014 John Deere 9510R Tractor (PD635)

2014 John Deere 9510R Tractor (PD635), 1600 hours, powershift transmission, tires are triples, PTO, Big hydraulic pump, premium cab, 18/6 power shift transmission, includes Star Fire 3000 globe GPS system with 2630 display and SF1 activation. Notes: Item Location: Coleman County, TX 76828 Equipment Sold "AS IS, WHERE IS": All equipment/property is sold "AS IS, WHERE IS" with no warranty or guarantees, expressed or implied, No operational assessments have been made by DPA Auctions on this item, it has been photographed ONLY.



### #281 - 2005 Century Class 120 (ED411)

2005 Century Class 120 (ED411), Detroit engine, Eaton auto shift, single pedal, Thermo King, A/C, heat, charger and 110 outlet, body and interior in very good shape, paint is good with very little rust on frame, body paint is white and frame paint red, aluminum wheels, rear tires mismatched, AirSlide 5th wheel, Air Suspension gauge, truck has new brakes, 2- 100 gallon fuel tanks, truck will heat engine and charge batteries in sub zero, truck has been shedded for years, truck is ready to go to work, shows 1,024,930 miles. Notes: Seller has records of engine work and transmission updates. Item Location: Jefferson, IA 50129 Equipment Sold "AS IS, WHERE IS": All equipment/property is sold "AS IS, WHERE IS" with no warranty or guarantees, expressed or implied, No operational assessments have been made by DPA Auctions on this item, it has been photographed ONLY.



### #282 - 2005 Freightliner (DR8130, Unit 76965)

2005 Freightliner (DR8130, Unit 76965), Cat C-7 diesel engine, (1 weak cylinder), 9 speed transmission, tandem axle full screw, 24' curtain side body, rear roll up door, side winch boxes, light panel roof, Am/FM cassette radio, air conditioning, cruise control, 22.5 tires, shows 312,856 miles. Notes: This truck engine DOES HAVE A WEAK cylinder. PLEASE ALLOW AT LEAST 60 DAYS FOR TITLE TRANSFER. Item Location: De Forest, WI 53532 Equipment Sold "AS IS, WHERE IS": All equipment/property is sold "AS IS, WHERE IS" with no warranty or guarantees, expressed or implied, No operational assessments have been made by DPA Auctions on this item, it has been photographed ONLY.



### #283 - 2015 Chevy 1500 (DR8129, Unit 32363)

2015 Chevy 1500 (DR8129, Unit 32363), 5.3 liter gas engine, automatic transmission, 4X4, crew cab, bed liner, rear receiver hitch, AM/FM radio, cruise control, 255/70R17 tires, shows 124,400 miles. Notes: PLEASE ALLOW AT LEAST 60 DAYS FOR TITLE TRANSFER. Item Location: De Forest, WI 53532 Equipment Sold "AS IS, WHERE IS": All equipment/property is sold "AS IS, WHERE IS" with no warranty or guarantees, expressed or implied, No operational assessments have been made by DPA Auctions on this item, it has been photographed ONLY.



### #284 - 2009 Chevy 2500 (DR8128, Unit 14306)

2009 Chevy 2500 (DR8128, Unit 14306), 6.0 liter gas engine, automatic transmission, 4X4, Z-71 package, quad cab, chrome nerf bars, Brute II chrome ag bumper, Am/FM CD radio, power windows & locks, cruise control, 245/75R16 tires, shows 197,276 miles. Notes: PLEASE ALLOW AT LEAST 60 DAYS FOR TITLE TRANSFER. Item Location: De Forest, WI 53532 Equipment Sold "AS IS, WHERE IS": All equipment/property is sold "AS IS, WHERE IS" with no warranty or guarantees, expressed or implied, No operational assessments have been made by DPA Auctions on this item, it has been photographed ONLY.



### #285 - Nh3 Nurse Tank (DR7989, Tank 13)

Nh3 Nurse Tank (DR7989, Tank 13), 1000 gallon Nh3 nurse tank, top front fill, data tag, Pryor 5th wheel style gear, rear hitch, 12.5L-15 tires. Notes: Item Location: Randolph, MN 55065 Equipment Sold "AS IS, WHERE IS": All equipment/property is sold "AS IS, WHERE IS" with no warranty or guarantees, expressed or implied, No operational assessments have been made by DPA Auctions on this item, it has been photographed ONLY.



### #286 - Nh3 Nurse Tank (DR7990, Tank 12)

Nh3 Nurse Tank (DR7990, Tank 12), 1000 gallon Nh3 nurse tank, top front fill, data tag, 5th wheel style gear, rear hitch, 11L-15 tires. Notes: Item Location: Randolph, MN 55065 Equipment Sold "AS IS, WHERE IS": All equipment/property is sold "AS IS, WHERE IS" with no warranty or guarantees, expressed or implied, No operational assessments have been made by DPA Auctions on this item, it has been photographed ONLY.



### #287 - Nh3 Nurse Tank (DR7991, Tank 3)

Nh3 Nurse Tank (DR7991, Tank 3), 1000 gallon Nh3 nurse tank, top front fill, data tag, 5th wheel style gear, rear hitch, 12.5L-15 tires. Notes: Item Location: Randolph, MN 55065 Equipment Sold "AS IS, WHERE IS": All equipment/property is sold "AS IS, WHERE IS" with no warranty or guarantees, expressed or implied, No operational assessments have been made by DPA Auctions on this item, it has been photographed ONLY.



### #288 - Nh3 Nurse Tank (DR7992, Tank 19)

Nh3 Nurse Tank (DR7992, Tank 19), 1000 gallon Nh3 nurse tank, top front fill, data tag, P&H 5th wheel style gear, rear hitch, 12.5L-15 tires. Notes: Item Location: Randolph, MN 55065 Equipment Sold "AS IS, WHERE IS": All equipment/property is sold "AS IS, WHERE IS" with no warranty or guarantees, expressed or implied, No operational assessments have been made by DPA Auctions on this item, it has been photographed ONLY.



### #289 - Nh3 Nurse Tank (DR7993, Tank 26)

Nh3 Nurse Tank (DR7993, Tank 26), 1000 gallon Nh3 nurse tank, top front fill, data tag, 5th wheel style gear, adjustable axles, rear hitch, 11L-15 tires. Notes: Item Location: Randolph, MN 55065 Equipment Sold "AS IS, WHERE IS": All equipment/property is sold "AS IS, WHERE IS" with no warranty or guarantees, expressed or implied, No operational assessments have been made by DPA Auctions on this item, it has been photographed ONLY.



### #290 - Nh3 Nurse Tank (DR7994, Tank 14)

Nh3 Nurse Tank (DR7994, Tank 14), 1000 gallon Nh3 nurse tank, top front fill, data tag, 5th wheel style gear, rear hitch, 11L-15 tires. Notes: Item Location: Randolph, MN 55065 Equipment Sold "AS IS, WHERE IS": All equipment/property is sold "AS IS, WHERE IS" with no warranty or guarantees, expressed or implied, No operational assessments have been made by DPA Auctions on this item, it has been photographed ONLY.



### #291 - Nh3 Nurse Tank (DR7995, Tank 5)

Nh3 Nurse Tank (DR7995, Tank 5), 1000 gallon Nh3 nurse tank, top front fill, data tag, 5th wheel style gear, rear hitch, 11L-15 tires. Notes: Item Location: Randolph, MN 55065 Equipment Sold "AS IS, WHERE IS": All equipment/property is sold "AS IS, WHERE IS" with no warranty or guarantees, expressed or implied, No operational assessments have been made by DPA Auctions on this item, it has been photographed ONLY.



### #292 - Nh3 Nurse Tank (DR7996, Tank 7)

Nh3 Nurse Tank (DR7996, Tank 7), 1000 gallon Nh3 nurse tank, top front fill, data tag, 5th wheel style gear, adjustable axles, rear hitch, 12.5L-15 tires. Notes: Item Location: Randolph, MN 55065 Equipment Sold "AS IS, WHERE IS": All equipment/property is sold "AS IS, WHERE IS" with no warranty or guarantees, expressed or implied, No operational assessments have been made by DPA Auctions on this item, it has been photographed ONLY.



### #293 - Nh3 Nurse Tank (DR7997, Tank 2)

Nh3 Nurse Tank (DR7997, Tank 2), 1000 gallon Nh3 nurse tank, top front fill, data tag, 5th wheel style gear, rear hitch, 11L-15 tires. Notes: Item Location: Randolph, MN 55065 Equipment Sold "AS IS, WHERE IS": All equipment/property is sold "AS IS, WHERE IS" with no warranty or guarantees, expressed or implied, No operational assessments have been made by DPA Auctions on this item, it has been photographed ONLY.



### #294 - Nh3 Nurse Tank (DR7998, Tank 47)

Nh3 Nurse Tank (DR7998, Tank 47), 1000 gallon Nh3 nurse tank, top front fill, data tag, P&H 5th wheel style gear, rear hitch, 12.5L-15 tires. Notes: Item Location: Randolph, MN 55065 Equipment Sold "AS IS, WHERE IS": All equipment/property is sold "AS IS, WHERE IS" with no warranty or guarantees, expressed or implied, No operational assessments have been made by DPA Auctions on this item, it has been photographed ONLY.



### #295 - Nh3 Nurse Tank (DR7999, Tank 9)

Nh3 Nurse Tank (DR7999, Tank 9), 1000 gallon Nh3 nurse tank, top front fill, data tag, P&H 5th wheel style gear, rear hitch, 11L-15 tires. Notes: Item Location: Randolph, MN 55065 Equipment Sold "AS IS, WHERE IS": All equipment/property is sold "AS IS, WHERE IS" with no warranty or guarantees, expressed or implied, No operational assessments have been made by DPA Auctions on this item, it has been photographed ONLY.



### #296 - Nh3 Nurse Tank (DR8000, Tank 4)

Nh3 Nurse Tank (DR8000, Tank 4), 1000 gallon Nh3 nurse tank, top front fill, data tag, P&H 5th wheel style gear, rear hitch, 11L-15 tires. Notes: Item Location: Randolph, MN 55065 Equipment Sold "AS IS, WHERE IS": All equipment/property is sold "AS IS, WHERE IS" with no warranty or guarantees, expressed or implied, No operational assessments have been made by DPA Auctions on this item, it has been photographed ONLY.



### #297 - Nh3 Nurse Tank (DR8001, Tank 31)

Nh3 Nurse Tank (DR8001, Tank 31), 1000 gallon Nh3 nurse tank, top front fill, data tag, P&H 5th wheel style gear, rear hitch, 11L-15 tires. Notes: Item Location: Randolph, MN 55065 Equipment Sold "AS IS, WHERE IS": All equipment/property is sold "AS IS, WHERE IS" with no warranty or guarantees, expressed or implied, No operational assessments have been made by DPA Auctions on this item, it has been photographed ONLY.



### #298 - Nh3 Nurse Tank (DR8002, Tank 37)

Nh3 Nurse Tank (DR8002, Tank 37), 1000 gallon Nh3 nurse tank, top front fill, data tag, Ag Systems 5th wheel style gear, adjustable axles, rear hitch, 11L-15 tires. Notes: Item Location: Randolph, MN 55065 Equipment Sold "AS IS, WHERE IS": All equipment/property is sold "AS IS, WHERE IS" with no warranty or guarantees, expressed or implied, No operational assessments have been made by DPA Auctions on this item, it has been photographed ONLY.



### #299 - Nh3 Nurse Tank (DR8003, Tank 41)

Nh3 Nurse Tank (DR8003, Tank 41), 1000 gallon Nh3 nurse tank, top front fill, data tag, Ag Systems 5th wheel style gear, adjustable axles, rear hitch, 11L-15 tires. Notes: One tire is FLAT. Item Location: Randolph, MN 55065 Equipment Sold "AS IS, WHERE IS": All equipment/property is sold "AS IS, WHERE IS" with no warranty or guarantees, expressed or implied, No operational assessments have been made by DPA Auctions on this item, it has been photographed ONLY.



### #300 - Nh3 Nurse Tank (DR8004, Tank 53)

Nh3 Nurse Tank (DR8004, Tank 53), 1000 gallon Nh3 nurse tank, top front fill, data tag, 5th wheel style gear, rear hitch, 12.5L-15 tires. Notes: Item Location: Randolph, MN 55065 Equipment Sold "AS IS, WHERE IS": All equipment/property is sold "AS IS, WHERE IS" with no warranty or guarantees, expressed or implied, No operational assessments have been made by DPA Auctions on this item, it has been photographed ONLY.



### #301 - Nh3 Nurse Tank (DR8005, Tank 52)

Nh3 Nurse Tank (DR8005, Tank 52), 1000 gallon Nh3 nurse tank, top front fill, data tag, P&H 5th wheel style gear, rear hitch, 12.5L-15 tires. Notes: Item Location: Randolph, MN 55065 Equipment Sold "AS IS, WHERE IS": All equipment/property is sold "AS IS, WHERE IS" with no warranty or guarantees, expressed or implied, No operational assessments have been made by DPA Auctions on this item, it has been photographed ONLY.



### #302 - Nh3 Nurse Tank (DR8006, Tank 201)

Nh3 Nurse Tank (DR8006, Tank 201), double 1000 gallon Nh3 nurse tank, top front fill, data tags, B&B 5th wheel style gear, tanks plumbed to front, rear hitch, 12.5L-15 tires. Notes: Item Location: Randolph, MN 55065 Equipment Sold "AS IS, WHERE IS": All equipment/property is sold "AS IS, WHERE IS" with no warranty or guarantees, expressed or implied, No operational assessments have been made by DPA Auctions on this item, it has been photographed ONLY.



### #303 - Nh3 Nurse Tank (DR8007, Tank 34)

Nh3 Nurse Tank (DR8007, Tank 34), 1000 gallon Nh3 nurse tank, top front fill, data tag, 5th wheel style gear, adjustable axles, rear hitch, 12.5L-15 tires. Notes: Item Location: Randolph, MN 55065 Equipment Sold "AS IS, WHERE IS": All equipment/property is sold "AS IS, WHERE IS" with no warranty or guarantees, expressed or implied, No operational assessments have been made by DPA Auctions on this item, it has been photographed ONLY.



### #304 - Waconia Leg (DR8008)

Waconia Leg (DR8008), 80' stainless steel dry fertilizer receiving leg, top and bottom ends, 2 way distributor, caged ladder, NO BELT. Notes: Item Location: Randolph, MN 55065 Equipment Sold "AS IS, WHERE IS": All equipment/property is sold "AS IS, WHERE IS" with no warranty or guarantees, expressed or implied, No operational assessments have been made by DPA Auctions on this item, it has been photographed ONLY.



### #308 - Gentry Crane (PZ8272)

Gentry Crane (PZ8272), Louden Machinery company trolley hoist system model #503-4005 (2 ton 480 volt 3 phase), 102' of track x 24' wide x 14', 1/8 ton post hoist mounted on it with winch. Notes: This item must be removed by March 16th, 2018 with NO exceptions. Dismantle, removal and transportation is at the expense, risk and liability of the buyer. Purchaser must provide proof of insurance before removal. Seller will have electricity disconnected. Item Location: De Witt, IA 52742 Equipment Sold "AS IS, WHERE IS": All equipment/property is sold "AS IS, WHERE IS" with no warranty or guarantees, expressed or implied, No operational assessments have been made by DPA Auctions on this item, it has been photographed ONLY.



### #309 - 1966 Oliver 1850 Tractor (DL202)

1966 Oliver 1850 Tractor (DL202), gas tractor, 1 new tire 90% tread on tires, wide front, brand new radiator, runs great, starts good, 6 cylinders. Notes: Tractor has a clutch issue. Item Location: Princeton, MO 64673 Equipment Sold "AS IS, WHERE IS": All equipment/property is sold "AS IS, WHERE IS" with no warranty or guarantees, expressed or implied, No operational assessments have been made by DPA Auctions on this item, it has been photographed ONLY.



### #310 - 1993 International 9400 Eagle (ED403)

1993 International 9400 Eagle (ED403), Cummins N14 diesel engine, Spicer 10 speed transmission, hydraulic PTO and wet kit, tandem dry fertilizer truck, steers 11R 22.5 40%, drive 295/75/22.5 60%, heat, air brakes and suspension, mechanically sound and fully operational, well maintained, shows 1042371.8 miles. Notes: Item Location: Brimfield, IL 61517 Equipment Sold "AS IS, WHERE IS": All equipment/property is sold "AS IS, WHERE IS" with no warranty or guarantees, expressed or implied, No operational assessments have been made by DPA Auctions on this item, it has been photographed ONLY.



### #312 - Nh3 Nurse Tank (DR7945, Unit 87224)

Nh3 Nurse Tank (DR7945, Unit 87224), tank 90, 1450 gallon Nh3 nurse tank, top front fill, data tag, P&H 5th wheel style running gear, adjustable axles, rear hitch, 14L-16.1 tires. Notes: Current V.T.P inspection. Item Location: Sargeant, MN 55973 Equipment Sold "AS IS, WHERE IS": All equipment/property is sold "AS IS, WHERE IS" with no warranty or guarantees, expressed or implied, No operational assessments have been made by DPA Auctions on this item, it has been photographed ONLY.



### #313 - Nh3 Nurse Tank (DR7946, Tank 12H)

Nh3 Nurse Tank (DR7946, Tank 12H), 1000 gallon Nh3 nurse tank, top front fill, data tag, P&H 5th wheel style running gear, adjustable axles, rear hitch, 12.5L-15 tires. Notes: Current V.T.P inspection. Item Location: Sargeant, MN 55973 Equipment Sold "AS IS, WHERE IS": All equipment/property is sold "AS IS, WHERE IS" with no warranty or guarantees, expressed or implied, No operational assessments have been made by DPA Auctions on this item, it has been photographed ONLY.





### #314 - Nh3 Nurse Tank (DR7947, Tank 15H)

Nh3 Nurse Tank (DR7947, Tank 15H), 1000 gallon Nh3 nurse tank, top front fill, data tag, P&H 5th wheel style running gear, rear hitch, 12.5L-15 tires. Notes: Current V,T,P inspection. Item Location: Sargeant, MN 55973 Equipment Sold "AS IS, WHERE IS": All equipment/property is sold "AS IS, WHERE IS" with no warranty or guarantees, expressed or implied, No operational assessments have been made by DPA Auctions on this item, it has been photographed ONLY.



### #315 - Nh3 Nurse Tank (DR7948, Tank 8H)

Nh3 Nurse Tank (DR7948, Tank 8H), 1000 gallon Nh3 nurse tank, top front fill, data tag, P&H 5th wheel style running gear, adjustable axles, rear hitch, 12.5L-15 tires. Notes: Current V,T,P inspection. Item Location: Sargeant, MN 55973 Equipment Sold "AS IS, WHERE IS": All equipment/property is sold "AS IS, WHERE IS" with no warranty or guarantees, expressed or implied, No operational assessments have been made by DPA Auctions on this item, it has been photographed ONLY.



### #316 - Nh3 Nurse Tank (DR7949, Tank 14H)

Nh3 Nurse Tank (DR7949, Tank 14H), 1000 gallon Nh3 nurse tank, top front fill, data tag, P&H 5th wheel style running gear, rear hitch, 12.5L-15 tires. Notes: Current V,T,P inspection. Item Location: Sargeant, MN 55973 Equipment Sold "AS IS, WHERE IS": All equipment/property is sold "AS IS, WHERE IS" with no warranty or guarantees, expressed or implied, No operational assessments have been made by DPA Auctions on this item, it has been photographed ONLY.



### #317 - Nh3 Nurse Tank (DR7950, Tank 50H)

Nh3 Nurse Tank (DR7950, Tank 50H), 1000 gallon Nh3 nurse tank, top front fill, data tag, P&H 5th wheel style running gear, rear hitch, 12.5L-15 tires. Notes: Current V,T,P inspection. Item Location: Sargeant, MN 55973 Equipment Sold "AS IS, WHERE IS": All equipment/property is sold "AS IS, WHERE IS" with no warranty or guarantees, expressed or implied, No operational assessments have been made by DPA Auctions on this item, it has been photographed ONLY.



### #318 - Nh3 Nurse Tank (DR7951, Unit 83693)

Nh3 Nurse Tank (DR7951, Unit 83693), tank 5H, 1000 gallon Nh3 nurse tank, top front fill, data tag, P&H 5th wheel style running gear, adjustable axles, rear hitch, 12.5L-15 tires. Notes: Current V,T,P inspection. Item Location: Sargeant, MN 55973 Equipment Sold "AS IS, WHERE IS": All equipment/property is sold "AS IS, WHERE IS" with no warranty or guarantees, expressed or implied, No operational assessments have been made by DPA Auctions on this item, it has been photographed ONLY.



### #319 - Nh3 Nurse Tank (DR7952, Tank 1H)

Nh3 Nurse Tank (DR7952, Tank 1H), 1000 gallon Nh3 nurse tank, top front fill, data tag, P&H 5th wheel style running gear, adjustable axles, rear hitch, 12.5L-15 tires. Notes: Current V,T,P inspection. Item Location: Sargeant, MN 55973 Equipment Sold "AS IS, WHERE IS": All equipment/property is sold "AS IS, WHERE IS" with no warranty or guarantees, expressed or implied, No operational assessments have been made by DPA Auctions on this item, it has been photographed ONLY.



### #320 - Nh3 Nurse Tank (DR7953, Tank 34H)

Nh3 Nurse Tank (DR7953, Tank 34H), 1000 gallon Nh3 nurse tank, top front fill, data tag, P&H 5th wheel style running gear, adjustable axles, rear hitch, 12.5L-15 tires. Notes: Current V,T,P inspection. Item Location: Sargeant, MN 55973 Equipment Sold "AS IS, WHERE IS": All equipment/property is sold "AS IS, WHERE IS" with no warranty or guarantees, expressed or implied, No operational assessments have been made by DPA Auctions on this item, it has been photographed ONLY.



### #321 - Nh3 Nurse Tank (DR7954, Tank 24H)

Nh3 Nurse Tank (DR7954, Tank 24H), 1000 gallon Nh3 nurse tank, top front fill, data tag, P&H 5th wheel style running gear, rear hitch, 12.5L-15 tires. Notes: Current V,T,P inspection. Item Location: Sargeant, MN 55973 Equipment Sold "AS IS, WHERE IS": All equipment/property is sold "AS IS, WHERE IS" with no warranty or guarantees, expressed or implied, No operational assessments have been made by DPA Auctions on this item, it has been photographed ONLY.



### #322 - Nh3 Nurse Tank (DR7955, Tank 18H)

Nh3 Nurse Tank (DR7955, Tank 18H), 1000 gallon Nh3 nurse tank, top front fill, data tag, P&H 5th wheel style running gear, rear hitch, 12.5L-15 tires. Notes: Current V,T,P inspection. Item Location: Sargeant, MN 55973 Equipment Sold "AS IS, WHERE IS": All equipment/property is sold "AS IS, WHERE IS" with no warranty or guarantees, expressed or implied, No operational assessments have been made by DPA Auctions on this item, it has been photographed ONLY.



---

### #323 - Nh3 Nurse Tank (DR7956, Tank 20H)

Nh3 Nurse Tank (DR7956, Tank 20H), 1000 gallon Nh3 nurse tank, top front fill, data tag, P&H 5th wheel style running gear, rear hitch, 12.5L-15 tires. Notes: Current V,T,P inspection. Item Location: Sargeant, MN 55973 Equipment Sold "AS IS, WHERE IS": All equipment/property is sold "AS IS, WHERE IS" with no warranty or guarantees, expressed or implied, No operational assessments have been made by DPA Auctions on this item, it has been photographed ONLY.



---

### #324 - Nh3 Nurse Tank (DR7957, Tank 6H)

Nh3 Nurse Tank (DR7957, Tank 6H), 1000 gallon Nh3 nurse tank, top front fill, data tag, P&H 5th wheel style running gear, adjustable axles, rear hitch, 12.5L-15 tires. Notes: Current V,T,P inspection. Item Location: Sargeant, MN 55973 Equipment Sold "AS IS, WHERE IS": All equipment/property is sold "AS IS, WHERE IS" with no warranty or guarantees, expressed or implied, No operational assessments have been made by DPA Auctions on this item, it has been photographed ONLY.



---

### #325 - Nh3 Nurse Tank (DR7958, Tank 31H)

Nh3 Nurse Tank (DR7958, Tank 31H), 1000 gallon Nh3 nurse tank, top front fill, data tag, P&H 5th wheel style running gear, adjustable axles, rear hitch, 11L-15 tires. Notes: Current V,T,P inspection. Item Location: Sargeant, MN 55973 Equipment Sold "AS IS, WHERE IS": All equipment/property is sold "AS IS, WHERE IS" with no warranty or guarantees, expressed or implied, No operational assessments have been made by DPA Auctions on this item, it has been photographed ONLY.



---

### #326 - Nh3 Nurse Tank (DR7959, Unit 56871)

Nh3 Nurse Tank (DR7959, Unit 56871), tank 100, 1000 gallon Nh3 nurse tank, top front fill, data tag, P&H 5th wheel style running gear, adjustable axles, rear hitch, 11L-15 tires. Notes: Current V,T,P inspection. Item Location: Sargeant, MN 55973 Equipment Sold "AS IS, WHERE IS": All equipment/property is sold "AS IS, WHERE IS" with no warranty or guarantees, expressed or implied, No operational assessments have been made by DPA Auctions on this item, it has been photographed ONLY.



---

### #327 - Semi Truck Mud Flaps (NJP1094)

Semi Truck Mud Flaps (NJP1094). Notes: Item Location: Pawnee City, NE 68420 Equipment Sold "AS IS, WHERE IS": All equipment/property is sold "AS IS, WHERE IS" with no warranty or guarantees, expressed or implied, No operational assessments have been made by DPA Auctions on this item, it has been photographed ONLY.



---

### #328 - Semi Truck Mud Flaps (NJP1095)

Semi Truck Mud Flaps (NJP1095). Notes: Item Location: Pawnee City, NE 68420 Equipment Sold "AS IS, WHERE IS": All equipment/property is sold "AS IS, WHERE IS" with no warranty or guarantees, expressed or implied, No operational assessments have been made by DPA Auctions on this item, it has been photographed ONLY.



---

### #339 - John Deere Pull Type Manure Spreader (AL234)

John Deere Pull Type Manure Spreader (AL234), new floor two years ago, worked fine until apron chain broke. Notes: Item Location: Aplington, IA 50604 Equipment Sold "AS IS, WHERE IS": All equipment/property is sold "AS IS, WHERE IS" with no warranty or guarantees, expressed or implied, No operational assessments have been made by DPA Auctions on this item, it has been photographed ONLY.



---

### #340 - Clark Electric Forklift (AL235)

Clark Electric Forklift (AL235), 42" forks, needs new batteries, worked good before batteries went bad, Model # ECS20. Notes: Item Location: Aplington, IA 50604 Equipment Sold "AS IS, WHERE IS": All equipment/property is sold "AS IS, WHERE IS" with no warranty or guarantees, expressed or implied, No operational assessments have been made by DPA Auctions on this item, it has been photographed ONLY.



---

### #341 - Baker LP Gas Forklift (AL232)

Baker LP Gas Forklift (AL232), needs water pump, ran two years ago. Notes: Item Location: Aplington, IA 50604 Equipment Sold "AS IS, WHERE IS": All equipment/property is sold "AS IS, WHERE IS" with no warranty or guarantees, expressed or implied, No operational assessments have been made by DPA Auctions on this item, it has been photographed ONLY.



---

### #342 - Hyster Forklift (AL244)

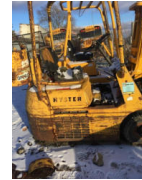
Hyster Forklift (AL244), Model H50H Notes: Item Location: Aplington, IA 50604 Equipment Sold "AS IS, WHERE IS": All equipment/property is sold "AS IS, WHERE IS" with no warranty or guarantees, expressed or implied, No operational assessments have been made by DPA Auctions on this item, it has been photographed ONLY.



---

### #343 - Hyster Forklift (AL243)

Hyster Forklift (AL243), Model H30E Notes: Item Location: Aplington, IA 50604 Equipment Sold "AS IS, WHERE IS": All equipment/property is sold "AS IS, WHERE IS" with no warranty or guarantees, expressed or implied, No operational assessments have been made by DPA Auctions on this item, it has been photographed ONLY.



---

### #344 - 4' Pull Type Dirt Scraper (AL238)

4' Pull Type Dirt Scraper (AL238). Notes: Item Location: Aplington, IA 50604 Equipment Sold "AS IS, WHERE IS": All equipment/property is sold "AS IS, WHERE IS" with no warranty or guarantees, expressed or implied, No operational assessments have been made by DPA Auctions on this item, it has been photographed ONLY.



---

### #345 - Winco Generator (AL242)

Winco Generator (AL242), 20,000 watts, 3 phase, 59 HZ, volte 120/240. Notes: Item Location: Aplington, IA 50604 Equipment Sold "AS IS, WHERE IS": All equipment/property is sold "AS IS, WHERE IS" with no warranty or guarantees, expressed or implied, No operational assessments have been made by DPA Auctions on this item, it has been photographed ONLY.



---

### #346 - Bobcat 610 Skid Loader (AL231)

Bobcat 610 Skid Loader (AL231), Wisconsin four cylinder, bucket good, no hydraulic leaks, tires are poor, needs to be overhauled, still runs, shows 2147 hours. Notes: Item Location: Aplington, IA 50604 Equipment Sold "AS IS, WHERE IS": All equipment/property is sold "AS IS, WHERE IS" with no warranty or guarantees, expressed or implied, No operational assessments have been made by DPA Auctions on this item, it has been photographed ONLY.



---

### #347 - Henke 11' Wide Snowplow Blade (AL239)

Henke 11' Wide Snowplow Blade (AL239), good cutting edge. Notes: Item Location: Aplington, IA 50604 Equipment Sold "AS IS, WHERE IS": All equipment/property is sold "AS IS, WHERE IS" with no warranty or guarantees, expressed or implied, No operational assessments have been made by DPA Auctions on this item, it has been photographed ONLY.



---

### #348 - Dettson 2084 Snow blower (AL240)

Dettson 2084 Snow blower (AL240), 7' wide, three point hitch, thousand PTO. Notes: Item Location: Aplington, IA 50604 Equipment Sold "AS IS, WHERE IS": All equipment/property is sold "AS IS, WHERE IS" with no warranty or guarantees, expressed or implied, No operational assessments have been made by DPA Auctions on this item, it has been photographed ONLY.



---

### #349 - John Deere Field Cultivator (AL233)

John Deere Field Cultivator (AL233), 9' 5" Wide, three point hitch, needs a few shovels. Notes: Item Location: Aplington, IA 50604 Equipment Sold "AS IS, WHERE IS": All equipment/property is sold "AS IS, WHERE IS" with no warranty or guarantees, expressed or implied, No operational assessments have been made by DPA Auctions on this item, it has been photographed ONLY.



---

### #350 - 5' Forks (AL237)

5' Forks (AL237), came off of a JCB 530 telehandler. Notes: Item Location: Aplington, IA 50604 Equipment Sold "AS IS, WHERE IS": All equipment/property is sold "AS IS, WHERE IS" with no warranty or guarantees, expressed or implied, No operational assessments have been made by DPA Auctions on this item, it has been photographed ONLY.



---

### #351 - 3208 Cat Motor (AL236)

3208 Cat Motor (AL236), automatic transmission, ran when pulled off of a dump truck three years ago, unknown miles. Notes: Item Location: Aplington, IA 50604 Equipment Sold "AS IS, WHERE IS": All equipment/property is sold "AS IS, WHERE IS" with no warranty or guarantees, expressed or implied, No operational assessments have been made by DPA Auctions on this item, it has been photographed ONLY.



---

### #352 - 7' Wide Bucket (AL241)

7' Wide Bucket (AL241), 37" from center to center, came off old Cat loader. Notes: Item Location: Aplington, IA 50604 Equipment Sold "AS IS, WHERE IS": All equipment/property is sold "AS IS, WHERE IS" with no warranty or guarantees, expressed or implied, No operational assessments have been made by DPA Auctions on this item, it has been photographed ONLY.



---

### #353 - 10 Continuous Panels (PD619)

10 Continuous Panels (PD619), 50 Inch high, 20 Foot long, 1 1/4 14 gauge US steel, 6 bar, 10 gauge connectors, 6 clips per panel included. Notes: Item Location: Saint Libory, NE 68872 Equipment Sold "AS IS, WHERE IS": All equipment/property is sold "AS IS, WHERE IS" with no warranty or guarantees, expressed or implied, No operational assessments have been made by DPA Auctions on this item, it has been photographed ONLY.



---

### #354 - 10 Continuous Panels (PD616)

10 Continuous Panels (PD616), 50 Inch high, 20 Foot long, 1 1/4 14 gauge US steel, 6 bar, 10 gauge connectors, 6 clips per panel included. Notes: Item Location: Saint Libory, NE 68872 Equipment Sold "AS IS, WHERE IS": All equipment/property is sold "AS IS, WHERE IS" with no warranty or guarantees, expressed or implied, No operational assessments have been made by DPA Auctions on this item, it has been photographed ONLY.



---

### #355 - 10 Continuous Panels (PD617)

10 Continuous Panels (PD617), 50 Inch high, 20 Foot long, 1 1/4 14 gauge US steel, 6 bar, 10 gauge connectors, 6 clips per panel included. Notes: Item Location: Saint Libory, NE 68872 Equipment Sold "AS IS, WHERE IS": All equipment/property is sold "AS IS, WHERE IS" with no warranty or guarantees, expressed or implied, No operational assessments have been made by DPA Auctions on this item, it has been photographed ONLY.



---

### #356 - 10 Continuous Panels (PD618)

10 Continuous Panels (PD618), 50 Inch high, 20 Foot long, 1 1/4 14 gauge US steel, 6 bar, 10 gauge connectors, 6 clips per panel included. Notes: Item Location: Saint Libory, NE 68872 Equipment Sold "AS IS, WHERE IS": All equipment/property is sold "AS IS, WHERE IS" with no warranty or guarantees, expressed or implied, No operational assessments have been made by DPA Auctions on this item, it has been photographed ONLY.





### #357 - 1000 Gallon Stainless Steel Tank (ED419)

1000 Gallon Stainless Steel Tank (ED419), three inch outlet in box sump, two inch on one end of the tank with sparge tube, no patches, tank is in good condition. Notes: Item Location: Flanagan, IL 61740 Equipment Sold "AS IS, WHERE IS": All equipment/property is sold "AS IS, WHERE IS" with no warranty or guarantees, expressed or implied, No operational assessments have been made by DPA Auctions on this item, it has been photographed ONLY.



### #358 - Willmar Wrangler Wheel Loader (AL229)

Willmar Wrangler Wheel Loader (AL229), pallet forks only, good tires. Notes: Item Location: Marengo, IA 52301 Equipment Sold "AS IS, WHERE IS": All equipment/property is sold "AS IS, WHERE IS" with no warranty or guarantees, expressed or implied, No operational assessments have been made by DPA Auctions on this item, it has been photographed ONLY.



### #359 - 2005 Trinity Stainless Steel Belt Trailer (AL227)

2005 Trinity Stainless Steel Belt Trailer (AL227), 42' long, 102" Wide, fitted tandem axle, air ride suspension, 22.5 tires, 50% tread, 48" wide belt, swing out door with knife gate, roll tarp. Notes: New landing gear summer 2016. Liner was replaced in 2015. Trailer brakes were replaced December of 2016. Trailer is ready to work. Item Location: Marengo, IA 52301 Equipment Sold "AS IS, WHERE IS": All equipment/property is sold "AS IS, WHERE IS" with no warranty or guarantees, expressed or implied, No operational assessments have been made by DPA Auctions on this item, it has been photographed ONLY.



### #360 - 2007 Freightliner Columbia Conventional (AL228)

2007 Freightliner Columbia Conventional (AL228), Mercedes engine, super 10 speed transmission, am/FM radio, mid roof sleeper, front tires 60%, rear tires 40%, engine brake, 40,000 lb. rear ends, air ride front axle, single muffler just replaced, stationary 5th wheel plate, wheels aluminum front and outside rear, shows 851,662 miles. Notes: Item Location: Marengo, IA 52301 Equipment Sold "AS IS, WHERE IS": All equipment/property is sold "AS IS, WHERE IS" with no warranty or guarantees, expressed or implied, No operational assessments have been made by DPA Auctions on this item, it has been photographed ONLY.



### #361 - 2008 Arctic Cat Crossfire 800cc (PD609)

2008 Arctic Cat Crossfire 800cc (PD609), 3300 miles, owned by a certified powersports mechanic, rebuilt less than 300 miles ago, has clutch kit and mbrp race can, handlebar risers, and reverse, turns and drives great, tons of power, good carbides, hyfax, and track are in great shape, dash went out and put in a used dash so miles aren't right on the dash. Notes: Owner has Regular Occupancy Note. Item Location: Jackson, MN 56143 Equipment Sold "AS IS, WHERE IS": All equipment/property is sold "AS IS, WHERE IS" with no warranty or guarantees, expressed or implied, No operational assessments have been made by DPA Auctions on this item, it has been photographed ONLY.



### #362 - 2008 Polaris rzr 800cc (PD606)

2008 Polaris rzr 800cc (PD606), 3000 miles, runs and drives great, brand new tires, 32 inch light bar, brand new wheel bearings, freshly rebuilt engine from the Polaris manufacturer, 100% serviced up and ready to go. Notes: Owner has Regular Occupancy Note. Item Location: Jackson, MN 56143 Equipment Sold "AS IS, WHERE IS": All equipment/property is sold "AS IS, WHERE IS" with no warranty or guarantees, expressed or implied, No operational assessments have been made by DPA Auctions on this item, it has been photographed ONLY.



### #363 - 7040 Allis Chalmers Tractor (TH214)

7040 Allis Chalmers Tractor (TH214), A/C, heated, 3 point, 540/100 pto, 18.4-38 rear tires at 40%, 11.00-16 front tires at 40%, shows 8245 hours. Notes: Tractor was used this fall on grain auger. No issues with hydraulics or pto, uses no oil. Item Location: Clarence, MO 63437 Equipment Sold "AS IS, WHERE IS": All equipment/property is sold "AS IS, WHERE IS" with no warranty or guarantees, expressed or implied, No operational assessments have been made by DPA Auctions on this item, it has been photographed ONLY.



### #364 - 1977 Ford FW30 Tractor (DL204)

1977 Ford FW30 Tractor (DL204), VT903 Cummins engine, 4 nearly new Firestone 20.8-38 radial tires, cold A/C, 3 new batteries September 2017, 3 working hydraulic remotes, center pin is tight, swivel air ride seat, drop box rebuilt by Big Tractor Parts, new bearings and seals in rear axle Spring 2016. Notes: Item Location: Ludington, MI 49431 Equipment Sold "AS IS, WHERE IS": All equipment/property is sold "AS IS, WHERE IS" with no warranty or guarantees, expressed or implied, No operational assessments have been made by DPA Auctions on this item, it has been photographed ONLY.



### #365 - 1958 Standard Liquid Transport Trailer (EG396)

1958 Standard Liquid Transport Trailer (EG396), 4,000 gallon capacity, tandem axle, spring suspension, 10.00R20 tires, Honda GX160 gas motor, Banjo self-priming centrifugal pump. Notes: Item Location: Smith Center, KS 66967 Equipment Sold "AS IS, WHERE IS": All equipment/property is sold "AS IS, WHERE IS" with no warranty or guarantees, expressed or implied, No operational assessments have been made by DPA Auctions on this item, it has been photographed ONLY.



### #366 - 2002 Timppe Hopper Trailer (TH209)

2002 Timppe Hopper Trailer (TH209), 40', 2 axles, 24.5x8.25 tires, tarp with electric opener put on in 2015, rebuilt doors in 2015, new bearings and rails on doors, was used during 2017 harvest, good tires, good brakes, farmer used. Notes: 5"-6" hole in the outside wall, cosmetic only. Item Location: Paris, IL 61944 Equipment Sold "AS IS, WHERE IS": All equipment/property is sold "AS IS, WHERE IS" with no warranty or guarantees, expressed or implied, No operational assessments have been made by DPA Auctions on this item, it has been photographed ONLY.



### #367 - 2002 Sterling M8500 (PD621)

2002 Sterling M8500 (PD621), Cat 3126 engine, fair rubber, heavy front axle, steerable tag, shows 235,565 miles. Notes: Item Location: Ocheyedan, IA 51354 Equipment Sold "AS IS, WHERE IS": All equipment/property is sold "AS IS, WHERE IS" with no warranty or guarantees, expressed or implied, No operational assessments have been made by DPA Auctions on this item, it has been photographed ONLY.



### #368 - 1990 Kenworth Construct T800 (PD622)

1990 Kenworth Construct T800 (PD622), Cat 3176 engine, tag, shows 444,853 miles. Notes: Item Location: Ocheyedan, IA 51354 Equipment Sold "AS IS, WHERE IS": All equipment/property is sold "AS IS, WHERE IS" with no warranty or guarantees, expressed or implied, No operational assessments have been made by DPA Auctions on this item, it has been photographed ONLY.



### #369 - Willmar Super 600 Fertilizer Spreader (PD613, unit N86)

Willmar Super 600 Fertilizer Spreader (PD613, unit N86). Notes: Item Location: Big Lake, MN 55309 Equipment Sold "AS IS, WHERE IS": All equipment/property is sold "AS IS, WHERE IS" with no warranty or guarantees, expressed or implied, No operational assessments have been made by DPA Auctions on this item, it has been photographed ONLY.



### #370 - Willmar Super 600 Fertilizer Spreader (PD612, unit W81)

Willmar Super 600 Fertilizer Spreader (PD612, unit W81). Notes: Item Location: Big Lake, MN 55309 Equipment Sold "AS IS, WHERE IS": All equipment/property is sold "AS IS, WHERE IS" with no warranty or guarantees, expressed or implied, No operational assessments have been made by DPA Auctions on this item, it has been photographed ONLY.



### #371 - 1998 Rogator 854 Sprayer (PD614, unit 83532)

1998 Rogator 854 Sprayer (PD614, unit 83532), Hydrostatic transmission, Flow Control, AM/FM, 80 Foot booms, shows 4032 hours. Notes: Item Location: Big Lake, MN 55309 Equipment Sold "AS IS, WHERE IS": All equipment/property is sold "AS IS, WHERE IS" with no warranty or guarantees, expressed or implied, No operational assessments have been made by DPA Auctions on this item, it has been photographed ONLY.



### #372 - Holding Bin (PD620)

Holding Bin (PD620), 10 Feet Wide X16 Feet Tall, Cone is 8 Foot 4 inches. Notes: Item Location: Big Lake, MN 55309 Equipment Sold "AS IS, WHERE IS": All equipment/property is sold "AS IS, WHERE IS" with no warranty or guarantees, expressed or implied, No operational assessments have been made by DPA Auctions on this item, it has been photographed ONLY.



### #373 - Steel Flat Bed 20 Foot X 8 Foot (PD611)

Steel Flat Bed 20 Foot X 8 Foot (PD611). Notes: Item Location: Big Lake, MN 55309 Equipment Sold "AS IS, WHERE IS": All equipment/property is sold "AS IS, WHERE IS" with no warranty or guarantees, expressed or implied, No operational assessments have been made by DPA Auctions on this item, it has been photographed ONLY.



### #374 - 2004 Dodge 2500 (PD607, Unit #10676)

2004 Dodge 2500 (PD607, Unit #10676), 5.7L V8 Hemi engine, Quad Cab, shows 203,318 miles. Notes: PLEASE ALLOW AT LEAST 60 DAYS FOR TITLE TRANSFER. Item Location: Big Lake, MN 55309 Equipment Sold "AS IS, WHERE IS": All equipment/property is sold "AS IS, WHERE IS" with no warranty or guarantees, expressed or implied, No operational assessments have been made by DPA Auctions on this item, it has been photographed ONLY.



### #375 - 2009 Chevrolet 1500 LT (PD608, Unit #14891)

2009 Chevrolet 1500 LT (PD608, Unit #14891), 5.3L V8, AM/FM CD, Extended Cab, Z71, shows 256,202 miles. Notes: PLEASE ALLOW AT LEAST 60 DAYS FOR TITLE TRANSFER. Item Location: Big Lake, MN 55309 Equipment Sold "AS IS, WHERE IS": All equipment/property is sold "AS IS, WHERE IS" with no warranty or guarantees, expressed or implied, No operational assessments have been made by DPA Auctions on this item, it has been photographed ONLY.



### #376 - Crop Copter Max Flight with EZ Health NDVI camera (ED412)

Crop Copter Max Flight with EZ Health NDVI camera (ED412), number one selling AG UAV in the industry, comes with 2 full sets of props, HD first person camera, EZ health camera with wide angle lens, HD goggles, DX 9 controller, pelican hard protective carrying case, and all the hardware and software to do autonomous flights and stitch plant health images together to create real time maps, also comes with a 4 port battery charger but no batteries, capable of over an hour of continuous flight time equal to roughly 160 acres of plant health mapping or countless crop scouting. Notes: Item Location: Oreana, IL 62554 Equipment Sold "AS IS, WHERE IS": All equipment/property is sold "AS IS, WHERE IS" with no warranty or guarantees, expressed or implied, No operational assessments have been made by DPA Auctions on this item, it has been photographed ONLY.



### #377 - Set of Fast Stainless Saddle Tanks (ED413)

Set of Fast Stainless Saddle Tanks (ED413), all original mounting hardware and factory plumbing included, very well taken care of, tanks have always been stored inside, fit 8000T, 8010T, 8020T, 8030T, 8000 RT tractors. Notes: Item Location: Oreana, IL 62554 Equipment Sold "AS IS, WHERE IS": All equipment/property is sold "AS IS, WHERE IS" with no warranty or guarantees, expressed or implied, No operational assessments have been made by DPA Auctions on this item, it has been photographed ONLY.



### #378 - Farm King 861 Auger (PD604)

Farm King 861 Auger (PD604), 61 foot, many updates, basically new adjustable auger basket with tow hitch, adjustable wheel to move auger, hydraulic lift to raise and lower, PTO driven, used to unload 18,000 bushel bin, new bearings and sprockets and chain a year ago, runs very smooth, keeps up with 8 inch unloading auger in bin, extra spare tire and rim. Notes: Item Location: North Bend, NE 68649 Equipment Sold "AS IS, WHERE IS": All equipment/property is sold "AS IS, WHERE IS" with no warranty or guarantees, expressed or implied, No operational assessments have been made by DPA Auctions on this item, it has been photographed ONLY.



### #379 - Farm King Auger (PD623)

Farm King Auger (PD623), 13 X 36 Auger, purchased new and stored inside. Notes: Item Location: Brookville, OH 45309 Equipment Sold "AS IS, WHERE IS": All equipment/property is sold "AS IS, WHERE IS" with no warranty or guarantees, expressed or implied, No operational assessments have been made by DPA Auctions on this item, it has been photographed ONLY.



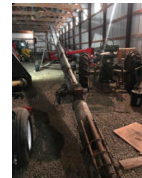
### #380 - Farm King Auger (PD624)

Farm King Auger (PD624), 13 X 85 Auger, purchased new, stored inside, in good working order. Notes: Item Location: Brookville, OH 45309 Equipment Sold "AS IS, WHERE IS": All equipment/property is sold "AS IS, WHERE IS" with no warranty or guarantees, expressed or implied, No operational assessments have been made by DPA Auctions on this item, it has been photographed ONLY.



### #381 - Hutchinson 10 X 61 Auger (PD626)

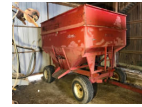
Hutchinson 10 X 61 Auger (PD626), new center bearing purchased, new upper drive chain replaced last year, lower flighting replaced a few years ago, comes with hopper. Notes: Item Location: Brookville, OH 45309 Equipment Sold "AS IS, WHERE IS": All equipment/property is sold "AS IS, WHERE IS" with no warranty or guarantees, expressed or implied, No operational assessments have been made by DPA Auctions on this item, it has been photographed ONLY.



---

### #382 - McCurdy Gravity Wagon (PD627)

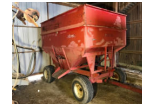
McCurdy Gravity Wagon (PD627). Notes: Item Location: Brookville, OH 45309 Equipment Sold "AS IS, WHERE IS": All equipment/property is sold "AS IS, WHERE IS" with no warranty or guarantees, expressed or implied, No operational assessments have been made by DPA Auctions on this item, it has been photographed ONLY.



---

### #383 - McCurdy Gravity Wagon (PD629)

McCurdy Gravity Wagon (PD629). Notes: Item Location: Brookville, OH 45309 Equipment Sold "AS IS, WHERE IS": All equipment/property is sold "AS IS, WHERE IS" with no warranty or guarantees, expressed or implied, No operational assessments have been made by DPA Auctions on this item, it has been photographed ONLY.



---

### #384 - Raven Envizio Pro (PD631)

Raven Envizio Pro (PD631), comes with helix antenna and wire harness. Notes: Item Location: Brookville, OH 45309 Equipment Sold "AS IS, WHERE IS": All equipment/property is sold "AS IS, WHERE IS" with no warranty or guarantees, expressed or implied, No operational assessments have been made by DPA Auctions on this item, it has been photographed ONLY.



---

### #385 - Hiniker 6000 Field Cultivator with 8150 Control (PD628)

Hiniker 6000 Field Cultivator with 8150 Control (PD628), eight row, 30 inch spacings, three point, anhydrous flow control with 8150 monitor. Notes: Item Location: Brookville, OH 45309 Equipment Sold "AS IS, WHERE IS": All equipment/property is sold "AS IS, WHERE IS" with no warranty or guarantees, expressed or implied, No operational assessments have been made by DPA Auctions on this item, it has been photographed ONLY.



---

### #386 - Goodyear 73X44.00 - 32 Floater Tires (PD625)

Goodyear 73X44.00 - 32 Floater Tires (PD625), came off 1903 Terra Gator. Notes: Item Location: Brookville, OH 45309 Equipment Sold "AS IS, WHERE IS": All equipment/property is sold "AS IS, WHERE IS" with no warranty or guarantees, expressed or implied, No operational assessments have been made by DPA Auctions on this item, it has been photographed ONLY.



---

### #387 - 2013 Wilson Cattle Trailer (PD630)

2013 Wilson Cattle Trailer (PD630), 52 Foot, tandem axle, air ride suspension, 52 Foot Length, 102" Width, 13' 6" height, aluminum floors, nosedek, aluminum rails are included for replacement of somewhat damaged floor. Notes: Item Location: Germantown, OH 45327 Equipment Sold "AS IS, WHERE IS": All equipment/property is sold "AS IS, WHERE IS" with no warranty or guarantees, expressed or implied, No operational assessments have been made by DPA Auctions on this item, it has been photographed ONLY.



---

### #388 - 1998 GMC C7500 Truck (PZ8390)

1998 GMC C7500 Truck (PZ8390), LP gas engine, 5 speed transmission, 2 speed rear end, heat, single axle, PTO, hydraulic wet kit, hydraulic reservoir, 255/80R22.5 tires excellent shape, shows 162,648 miles. Notes: The electronic selector does not work with this piece. Truck has always had routine maintenance and is in good shape. Item Location: Hills, IA 52235 Equipment Sold "AS IS, WHERE IS": All equipment/property is sold "AS IS, WHERE IS" with no warranty or guarantees, expressed or implied, No operational assessments have been made by DPA Auctions on this item, it has been photographed ONLY.



---

### #389 - Three Inch Mag Meter (ED417)

Three Inch Mag Meter (ED417), two way manifold with three inch air valves, stand and welded pipe included. Notes: Item Location: Bement, IL 61813 Equipment Sold "AS IS, WHERE IS": All equipment/property is sold "AS IS, WHERE IS" with no warranty or guarantees, expressed or implied, No operational assessments have been made by DPA Auctions on this item, it has been photographed ONLY.



---

### #390 - 4X4 Mini Bulk Platform Scale & Scale Head (ED418)

4X4 Mini Bulk Platform Scale & Scale Head (ED418), was used in spring of 2015. Notes: Item Location: Bement, IL 61813 Equipment Sold "AS IS, WHERE IS": All equipment/property is sold "AS IS, WHERE IS" with no warranty or guarantees, expressed or implied, No operational assessments have been made by DPA Auctions on this item, it has been photographed ONLY.





### #391 - Junge Mix Tank with Air Valves (ED416)

Junge Mix Tank with Air Valves (ED416), 120 gallon capacity, inch and half pump and electric motor. Notes: Item Location: Bement, IL 61813 Equipment Sold "AS IS, WHERE IS": All equipment/property is sold "AS IS, WHERE IS" with no warranty or guarantees, expressed or implied, No operational assessments have been made by DPA Auctions on this item, it has been photographed ONLY.



### #392 - 1995 Trailmobile Van Trailer (ED414)

1995 Trailmobile Van Trailer (ED414), 48 foot long, tires are decent, no leaks, needs floor supports replaced, would not trust a forklift to drive into trailer, was used spring of 2017 to haul seed. Notes: Item Location: Bement, IL 61813 Equipment Sold "AS IS, WHERE IS": All equipment/property is sold "AS IS, WHERE IS" with no warranty or guarantees, expressed or implied, No operational assessments have been made by DPA Auctions on this item, it has been photographed ONLY.



### #393 - 1979 Progress 6600 Gallon Tanker (ED415)

1979 Progress 6600 Gallon Tanker (ED415), center drop trailer with a 3 inch hydraulic pump, tires and brakes are good, has a small leak in center of tank behind one of the mild steel support straps, only leaked when hauling 32% solution, no build up on inside of tank, only been used to haul AG chemicals for the past 20 years. Notes: Item Location: Bement, IL 61813 Equipment Sold "AS IS, WHERE IS": All equipment/property is sold "AS IS, WHERE IS" with no warranty or guarantees, expressed or implied, No operational assessments have been made by DPA Auctions on this item, it has been photographed ONLY.



### #394 - 2016 Neo 7X14 Trailer W/ V Tandem Axle (PD603)

2016 Neo 7X14 Trailer W/ V Tandem Axle (PD603), 72 3/4 inch ceiling height, 7500 pounds, all aluminum, rear ramp door, silver front, flat black on black, new full warranty. Notes: Item Location: Morris, MN 56267 Equipment Sold "AS IS, WHERE IS": All equipment/property is sold "AS IS, WHERE IS" with no warranty or guarantees, expressed or implied, No operational assessments have been made by DPA Auctions on this item, it has been photographed ONLY.



### #395 - 2017 Neo 10X6 Flat Top Trailer W/ V Nose (PD601)

2017 Neo 10X6 Flat Top Trailer W/ V Nose (PD601), 72 inch inside height, ramp door, rear stabilizers, all aluminum, brand new full warranty, small dent on front v from shipping. Notes: Item Location: Morris, MN 56267 Equipment Sold "AS IS, WHERE IS": All equipment/property is sold "AS IS, WHERE IS" with no warranty or guarantees, expressed or implied, No operational assessments have been made by DPA Auctions on this item, it has been photographed ONLY.



### #396 - 2017 Neo 7X12 Trailer W/ V Tandem Axle (PD602)

2017 Neo 7X12 Trailer W/ V Tandem Axle (PD602), 72 3/4 inch ceiling height, 7500 pounds, rear ramp door, gray in color, new full warranty. Notes: Item Location: Morris, MN 56267 Equipment Sold "AS IS, WHERE IS": All equipment/property is sold "AS IS, WHERE IS" with no warranty or guarantees, expressed or implied, No operational assessments have been made by DPA Auctions on this item, it has been photographed ONLY.



### #396A - 2012 Challenger MT655D FWA Tractor (PD586)

2012 Challenger MT655D FWA Tractor (PD586), 5330 hours, 27 mph, CVT, Ag Leader versa integrated auto steer, 3 Point quick hitch, 22 front weights, 480/80R 46 Michelin rear tires and duals 40%, 16.9R 30 Firestone front tires 30%, def, cab suspension, 4 hydraulic hoses, 3 PTO's. Notes: Item Location: Owatonna, MN 55060 Equipment Sold "AS IS, WHERE IS": All equipment/property is sold "AS IS, WHERE IS" with no warranty or guarantees, expressed or implied, No operational assessments have been made by DPA Auctions on this item, it has been photographed ONLY.



### #397 - Express Scale Parts Bag Sewer (NJP1046)

Express Scale Parts Bag Sewer (NJP1046), Model GBAO-31, 5-1 ratio, scale, conveyer, 115 lb capacity. Notes: This item must be removed by March 30, 2018, no exceptions. Dismantle, removal and transportation is at the expense, risk and liability of the buyer. Item Location: Breese, IL 62230 Equipment Sold "AS IS, WHERE IS": All equipment/property is sold "AS IS, WHERE IS" with no warranty or guarantees, expressed or implied, No operational assessments have been made by DPA Auctions on this item, it has been photographed ONLY.



### #398 - Spinks Scale Co Horizontal Feed Mixer (NJP1050)

Spinks Scale Co Horizontal Feed Mixer (NJP1050), electric motor, air compressor, Spinks platform scale. Notes: This item must be removed by March 30, 2018, no exceptions. Dismantle, removal and transportation is at the expense, risk and liability of the buyer. Item Location: Breese, IL 62230 Equipment Sold "AS IS, WHERE IS": All equipment/property is sold "AS IS, WHERE IS" with no warranty or guarantees, expressed or implied, No operational assessments have been made by DPA Auctions on this item, it has been photographed ONLY.



### #399 - 6,000lb. Bin (NJP1051)

6,000lb. Bin (NJP1051), U-trough conveyer, electric motor., electronic scale. Notes: This item must be removed by March 30, 2018, no exceptions. Dismantle, removal and transportation is at the expense, risk and liability of the buyer. Item Location: Breese, IL 62230 Equipment Sold "AS IS, WHERE IS": All equipment/property is sold "AS IS, WHERE IS" with no warranty or guarantees, expressed or implied, No operational assessments have been made by DPA Auctions on this item, it has been photographed ONLY.



### #400 - Weigh Buggy (NJP1052)

Weigh Buggy (NJP1052), digital scale head, includes doc cart. Notes: This item must be removed by March 30, 2018, no exceptions. Dismantle, removal and transportation is at the expense, risk and liability of the buyer. Item Location: Breese, IL 62230 Equipment Sold "AS IS, WHERE IS": All equipment/property is sold "AS IS, WHERE IS" with no warranty or guarantees, expressed or implied, No operational assessments have been made by DPA Auctions on this item, it has been photographed ONLY.



### #401 - Weigh Buggy (NJP1053)

Weigh Buggy (NJP1053), includes doc cart. Notes: This item must be removed by March 30, 2018, no exceptions. Dismantle, removal and transportation is at the expense, risk and liability of the buyer. Item Location: Breese, IL 62230 Equipment Sold "AS IS, WHERE IS": All equipment/property is sold "AS IS, WHERE IS" with no warranty or guarantees, expressed or implied, No operational assessments have been made by DPA Auctions on this item, it has been photographed ONLY.



### #402 - 90' Leg and Downspouts (NJP1107)

90' Leg and Downspouts (NJP1107), caged in ladder. Notes: This item must be removed by March 30, 2018, no exceptions. Dismantle, removal and transportation is at the expense, risk and liability of the buyer. Item Location: Breese, IL 62230 Equipment Sold "AS IS, WHERE IS": All equipment/property is sold "AS IS, WHERE IS" with no warranty or guarantees, expressed or implied, No operational assessments have been made by DPA Auctions on this item, it has been photographed ONLY.



### #403 - Insulated Fat Tank (NJP1066)

Insulated Fat Tank (NJP1066). Notes: This item must be removed by March 30, 2018, no exceptions. Dismantle, removal and transportation is at the expense, risk and liability of the buyer. Item Location: Breese, IL 62230 Equipment Sold "AS IS, WHERE IS": All equipment/property is sold "AS IS, WHERE IS" with no warranty or guarantees, expressed or implied, No operational assessments have been made by DPA Auctions on this item, it has been photographed ONLY.



### #404 - Nissan Forklift (NJP1039)

Nissan Forklift (NJP1039), 2 stage lift, LP engine, hard tire, shows 7336 hours. Notes: Item Location: Breese, IL 62230 Equipment Sold "AS IS, WHERE IS": All equipment/property is sold "AS IS, WHERE IS" with no warranty or guarantees, expressed or implied, No operational assessments have been made by DPA Auctions on this item, it has been photographed ONLY.



### #405 - Ficklin Model 300 Gravity Wagon (NJP1065)

Ficklin Model 300 Gravity Wagon (NJP1065), 4 wheel gear, tires 12.5L-15. Notes: Item Location: Breese, IL 62230 Equipment Sold "AS IS, WHERE IS": All equipment/property is sold "AS IS, WHERE IS" with no warranty or guarantees, expressed or implied, No operational assessments have been made by DPA Auctions on this item, it has been photographed ONLY.



### #406 - Patz Belt Conveyer (NJP1038)

Patz Belt Conveyer (NJP1038), approximately 18', electric motor. Notes: Item Location: Breese, IL 62230 Equipment Sold "AS IS, WHERE IS": All equipment/property is sold "AS IS, WHERE IS" with no warranty or guarantees, expressed or implied, No operational assessments have been made by DPA Auctions on this item, it has been photographed ONLY.



---

### #407 - 2 Ingredient Bins (NJP1044)

2 Ingredient Bins (NJP1044), mild steel. Notes: Item Location: Breese, IL 62230 Equipment Sold "AS IS, WHERE IS": All equipment/property is sold "AS IS, WHERE IS" with no warranty or guarantees, expressed or implied, No operational assessments have been made by DPA Auctions on this item, it has been photographed ONLY.



---

### #408 - Roskamp Roller Mill (NJP1064)

Roskamp Roller Mill (NJP1064), electric motor. Notes: Item Location: Breese, IL 62230 Equipment Sold "AS IS, WHERE IS": All equipment/property is sold "AS IS, WHERE IS" with no warranty or guarantees, expressed or implied, No operational assessments have been made by DPA Auctions on this item, it has been photographed ONLY.



---

### #409 - Various Shop Equipment (NJP1061)

Various Shop Equipment (NJP1061), various tires, karosene heater, battery charger. Notes: This item must be removed by March 30, 2018, no exceptions. Dismantle, removal and transportation is at the expense, risk and liability of the buyer. Item Location: Breese, IL 62230 Equipment Sold "AS IS, WHERE IS": All equipment/property is sold "AS IS, WHERE IS" with no warranty or guarantees, expressed or implied, No operational assessments have been made by DPA Auctions on this item, it has been photographed ONLY.



---

### #410 - Power Boxes (NJP1062)

Power Boxes (NJP1062), includes shop tools. Notes: This item must be removed by March 30, 2018, no exceptions. Dismantle, removal and transportation is at the expense, risk and liability of the buyer. Item Location: Breese, IL 62230 Equipment Sold "AS IS, WHERE IS": All equipment/property is sold "AS IS, WHERE IS" with no warranty or guarantees, expressed or implied, No operational assessments have been made by DPA Auctions on this item, it has been photographed ONLY.



---

### #411 - Shovels and Brooms (NJP1068)

Shovels and Brooms (NJP1068), sterio, storage cabinet, rake, hoe, 400 pound storage drum. Notes: This item must be removed by March 30, 2018, no exceptions. Dismantle, removal and transportation is at the expense, risk and liability of the buyer. Item Location: Breese, IL 62230 Equipment Sold "AS IS, WHERE IS": All equipment/property is sold "AS IS, WHERE IS" with no warranty or guarantees, expressed or implied, No operational assessments have been made by DPA Auctions on this item, it has been photographed ONLY.



---

### #412 - Front Desk (NJP1107)

Front Desk (NJP1107), filing cabinet, office chair. Notes: Everything included. This item must be removed by March 30, 2018, no exceptions. Dismantle, removal and transportation is at the expense, risk and liability of the buyer. Item Location: Breese, IL 62230 Equipment Sold "AS IS, WHERE IS": All equipment/property is sold "AS IS, WHERE IS" with no warranty or guarantees, expressed or implied, No operational assessments have been made by DPA Auctions on this item, it has been photographed ONLY.



---

### #413 - Office Desk (1108)

Office Desk (1108), office chair. Notes: Everything included. This item must be removed by March 30, 2018, no exceptions. Dismantle, removal and transportation is at the expense, risk and liability of the buyer. Item Location: Breese, IL 62230 Equipment Sold "AS IS, WHERE IS": All equipment/property is sold "AS IS, WHERE IS" with no warranty or guarantees, expressed or implied, No operational assessments have been made by DPA Auctions on this item, it has been photographed ONLY.



---

### #414 - Wrap Around Desk (NJP1109)

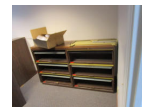
Wrap Around Desk (NJP1109), two office chairs. Notes: Everything included. This item must be removed by March 30, 2018, no exceptions. Dismantle, removal and transportation is at the expense, risk and liability of the buyer. Item Location: Breese, IL 62230 Equipment Sold "AS IS, WHERE IS": All equipment/property is sold "AS IS, WHERE IS" with no warranty or guarantees, expressed or implied, No operational assessments have been made by DPA Auctions on this item, it has been photographed ONLY.



---

### #415 - 6 Shelves (NJP1110)

6 Shelves (NJP1110), office chair, magazine sorter. Notes: Everything included. This item must be removed by March 30, 2018, no exceptions. Dismantle, removal and transportation is at the expense, risk and liability of the buyer. Item Location: Breese, IL 62230 Equipment Sold "AS IS, WHERE IS": All equipment/property is sold "AS IS, WHERE IS" with no warranty or guarantees, expressed or implied, No operational assessments have been made by DPA Auctions on this item, it has been photographed ONLY.



### #416 - Office Desk (NJP1111)

Office Desk (NJP1111), 3 office chairs, shelf. Notes: Everything included. This item must be removed by March 30, 2018, no exceptions. Dismantle, removal and transportation is at the expense, risk and liability of the buyer. Item Location: Breese, IL 62230 Equipment Sold "AS IS, WHERE IS": All equipment/property is sold "AS IS, WHERE IS" with no warranty or guarantees, expressed or implied, No operational assessments have been made by DPA Auctions on this item, it has been photographed ONLY.



### #417 - ANI Swine O VTM (NJP1112)

ANI Swine O VTM (NJP1112), 29 bags, 2 desks, 1 chair, 1 table, copier. Notes: Everything included. This item must be removed by March 30, 2018, no exceptions. Dismantle, removal and transportation is at the expense, risk and liability of the buyer. Item Location: Breese, IL 62230 Equipment Sold "AS IS, WHERE IS": All equipment/property is sold "AS IS, WHERE IS" with no warranty or guarantees, expressed or implied, No operational assessments have been made by DPA Auctions on this item, it has been photographed ONLY.



### #418 - Office Desk (NJP1113)

Office Desk (NJP1113), 3 office chairs, shelf. Notes: Everything included. This item must be removed by March 30, 2018, no exceptions. Dismantle, removal and transportation is at the expense, risk and liability of the buyer. Item Location: Breese, IL 62230 Equipment Sold "AS IS, WHERE IS": All equipment/property is sold "AS IS, WHERE IS" with no warranty or guarantees, expressed or implied, No operational assessments have been made by DPA Auctions on this item, it has been photographed ONLY.



### #419 - Copier Stand (NJP1114)

Copier Stand (NJP1114), 5 filing cabinets, table, fax machine. Notes: Everything included. This item must be removed by March 30, 2018, no exceptions. Dismantle, removal and transportation is at the expense, risk and liability of the buyer. Item Location: Breese, IL 62230 Equipment Sold "AS IS, WHERE IS": All equipment/property is sold "AS IS, WHERE IS" with no warranty or guarantees, expressed or implied, No operational assessments have been made by DPA Auctions on this item, it has been photographed ONLY.



### #420 - Conference Table (NJP1115)

Conference Table (NJP1115), 13 chairs. Notes: Everything included. This item must be removed by March 30, 2018, no exceptions. Dismantle, removal and transportation is at the expense, risk and liability of the buyer. Item Location: Breese, IL 62230 Equipment Sold "AS IS, WHERE IS": All equipment/property is sold "AS IS, WHERE IS" with no warranty or guarantees, expressed or implied, No operational assessments have been made by DPA Auctions on this item, it has been photographed ONLY.



### #421 - Apex TV and DVD Player (NJP1116)

Apex TV and DVD Player (NJP1116), 2 tables, 10 chairs, microwave, refrigerator, coat rack. Notes: Everything included. This item must be removed by March 30, 2018, no exceptions. Dismantle, removal and transportation is at the expense, risk and liability of the buyer. Item Location: Breese, IL 62230 Equipment Sold "AS IS, WHERE IS": All equipment/property is sold "AS IS, WHERE IS" with no warranty or guarantees, expressed or implied, No operational assessments have been made by DPA Auctions on this item, it has been photographed ONLY.



### #422 - 11 Filing Cabinets (NJP1117)

11 Filing Cabinets (NJP1117), projector screens, 7 shelves. Notes: Everything included. This item must be removed by March 30, 2018, no exceptions. Dismantle, removal and transportation is at the expense, risk and liability of the buyer. Item Location: Breese, IL 62230 Equipment Sold "AS IS, WHERE IS": All equipment/property is sold "AS IS, WHERE IS" with no warranty or guarantees, expressed or implied, No operational assessments have been made by DPA Auctions on this item, it has been photographed ONLY.



### #423 - 4 Filing Cabinets (NJP1118)

4 Filing Cabinets (NJP1118), shelf, table with shelves. Notes: Everything included. This item must be removed by March 30, 2018, no exceptions. Dismantle, removal and transportation is at the expense, risk and liability of the buyer. Item Location: Breese, IL 62230 Equipment Sold "AS IS, WHERE IS": All equipment/property is sold "AS IS, WHERE IS" with no warranty or guarantees, expressed or implied, No operational assessments have been made by DPA Auctions on this item, it has been photographed ONLY.





### #424 - 2 Pallet Shelving (NJP1042)

2 Pallet Shelving (NJP1042), 3 tier. Notes: Everything included. This item must be removed by March 30, 2018, no exceptions. Dismantle, removal and transportation is at the expense, risk and liability of the buyer. Item Location: Breese, IL 62230 Equipment Sold "AS IS, WHERE IS": All equipment/property is sold "AS IS, WHERE IS" with no warranty or guarantees, expressed or implied, No operational assessments have been made by DPA Auctions on this item, it has been photographed ONLY.



### #425 - Plastic Wrapping Table (NJP1043)

Plastic Wrapping Table (NJP1043). Notes: Everything included. This item must be removed by March 30, 2018, no exceptions. Dismantle, removal and transportation is at the expense, risk and liability of the buyer. Item Location: Breese, IL 62230 Equipment Sold "AS IS, WHERE IS": All equipment/property is sold "AS IS, WHERE IS" with no warranty or guarantees, expressed or implied, No operational assessments have been made by DPA Auctions on this item, it has been photographed ONLY.



### #426 - Pallet Shelving (NJP1054)

Pallet Shelving (NJP1054), 5 caged shuttle tanks, stand with poly tank. Notes: Everything included. This item must be removed by March 30, 2018, no exceptions. Dismantle, removal and transportation is at the expense, risk and liability of the buyer. Item Location: Breese, IL 62230 Equipment Sold "AS IS, WHERE IS": All equipment/property is sold "AS IS, WHERE IS" with no warranty or guarantees, expressed or implied, No operational assessments have been made by DPA Auctions on this item, it has been photographed ONLY.



### #427 - 6 Caged Shuttle Tanks (NJP1055)

6 Caged Shuttle Tanks (NJP1055), 2 plastic containers. Notes: Everything included. This item must be removed by March 30, 2018, no exceptions. Dismantle, removal and transportation is at the expense, risk and liability of the buyer. Item Location: Breese, IL 62230 Equipment Sold "AS IS, WHERE IS": All equipment/property is sold "AS IS, WHERE IS" with no warranty or guarantees, expressed or implied, No operational assessments have been made by DPA Auctions on this item, it has been photographed ONLY.



### #428 - Mild Steel Container (NJP1056)

Mild Steel Container (NJP1056), includes wood container. Notes: Everything included. This item must be removed by March 30, 2018, no exceptions. Dismantle, removal and transportation is at the expense, risk and liability of the buyer. Item Location: Breese, IL 62230 Equipment Sold "AS IS, WHERE IS": All equipment/property is sold "AS IS, WHERE IS" with no warranty or guarantees, expressed or implied, No operational assessments have been made by DPA Auctions on this item, it has been photographed ONLY.



### #429 - 2 Pallet Shelves (NJP1057)

2 Pallet Shelves (NJP1057), includes 7 caged shuttle tanks, with steps, assortment of inventory items. Notes: Everything included. This item must be removed by March 30, 2018, no exceptions. Dismantle, removal and transportation is at the expense, risk and liability of the buyer. Item Location: Breese, IL 62230 Equipment Sold "AS IS, WHERE IS": All equipment/property is sold "AS IS, WHERE IS" with no warranty or guarantees, expressed or implied, No operational assessments have been made by DPA Auctions on this item, it has been photographed ONLY.



### #430 - Storage Tanks and Inventory (NJP1060)

Storage Tanks and Inventory (NJP1060), 3 storage barrels on stands, caged poly shuttle tank, wooden ingredients bin, various bag inventory items. Notes: Everything included. This item must be removed by March 30, 2018, no exceptions. Dismantle, removal and transportation is at the expense, risk and liability of the buyer. Item Location: Breese, IL 62230 Equipment Sold "AS IS, WHERE IS": All equipment/property is sold "AS IS, WHERE IS" with no warranty or guarantees, expressed or implied, No operational assessments have been made by DPA Auctions on this item, it has been photographed ONLY.



### #431 - Doc Cart (NJP 1059)

Doc Cart (NJP 1059), includes fan, fiberglass ladder. Notes: Everything included. This item must be removed by March 30, 2018, no exceptions. Dismantle, removal and transportation is at the expense, risk and liability of the buyer. Item Location: Breese, IL 62230 Equipment Sold "AS IS, WHERE IS": All equipment/property is sold "AS IS, WHERE IS" with no warranty or guarantees, expressed or implied, No operational assessments have been made by DPA Auctions on this item, it has been photographed ONLY.



---

### **#432 - Shelving (NJP1063)**

Shelving (NJP1063), 2 filing cabinets, shelving, various tools. Notes: Everything included. This item must be removed by March 30, 2018, no exceptions. Dismantle, removal and transportation is at the expense, risk and liability of the buyer. Item Location: Breese, IL 62230 Equipment Sold "AS IS, WHERE IS": All equipment/property is sold "AS IS, WHERE IS" with no warranty or guarantees, expressed or implied, No operational assessments have been made by DPA Auctions on this item, it has been photographed ONLY.



---

### **#433 - Control Boxes (NJP1067)**

Control Boxes (NJP1067), includes computer, stool, desk. Notes: Everything included. This item must be removed by March 30, 2018, no exceptions. Dismantle, removal and transportation is at the expense, risk and liability of the buyer. Item Location: Breese, IL 62230 Equipment Sold "AS IS, WHERE IS": All equipment/property is sold "AS IS, WHERE IS" with no warranty or guarantees, expressed or implied, No operational assessments have been made by DPA Auctions on this item, it has been photographed ONLY.

