

Auction catalog

Title	Excess Seed Equipment Online Auction - August 29, 2017 10AM Central
Description	The following line of excess seed, grain, wheat cleaning and shop equipment will be sold online with the bidding ending on August 29, 2017. Location of the equipment is given. Bidding within the last minute before the closing of a lot will extend the bidding time by an additional minute. Be prepared to bid accordingly. For more information, contact Del Peterson & Associates: 419 West Judy Drive Fremont NE, 68025 Phone: 800-492-9090 or 402-721-4388 Fax: 402-721-4583 E-mail: auction@delpeterson.com
Date	Tue, Aug 29, 2017
Starts at	10:00 AM
Address	PO Box 654, Fremont, NE 68026 USA
Categories	

#1 - Baldor Industrial Duty Bench Grinder (Item-001)

Baldor Industrial Duty Bench Grinder (Item-001), 8" bench grinder, with a new stone wheel and wire wheel, nice condition with work light and face shield, 3 phase, 208/220/440 volts. Notes: Item Location: Trilla, IL 62469 Equipment Sold "AS IS, WHERE IS": All equipment/property is sold "AS IS, WHERE IS" with no warranty or guarantees, expressed or implied, No operational assessments or testing have been made by Del Peterson on this item, it has been photographed ONLY.



#2 - DAKE 1.5 Ton Arbor Press (Item-002)

DAKE 1.5 Ton Arbor Press (Item-002), nice condition, comes with 2 press plates. Notes: Item Location: Trilla, IL 62469 Equipment Sold "AS IS, WHERE IS": All equipment/property is sold "AS IS, WHERE IS" with no warranty or guarantees, expressed or implied, No operational assessments or testing have been made by Del Peterson on this item, it has been photographed ONLY.



#3 - Seedburo Hand Testing Screens (Item-003)

Seedburo Hand Testing Screens (Item-003), a set of (4) Seedburo hand testing screens used for sifting small lots of different sized seeds, good condition. Sizes 8/64 Round 9/64 Triangle 5/64 Triangle 1/12 Round 1/14 x 1/2 Slot 4.5/64 x 1/2 Slot Notes: Item Location: Trilla, IL 62469 Equipment Sold "AS IS, WHERE IS": All equipment/property is sold "AS IS, WHERE IS" with no warranty or guarantees, expressed or implied, No operational assessments or testing have been made by Del Peterson on this item, it has been photographed ONLY.



#4 - Seedburo Hand Testing Screens (Item-004)

Seedburo Hand Testing Screens (Item-004), a set of (6) Seedburo hand testing screens used for sifting small lots of different sized seeds, good condition. Sizes 5/64 Round 9/64 Triangle 5/64 Triangle 1/12 Round 1/14 x 1/2 Slot 4.5/64 x 1/2 Slot Notes: Item Location: Trilla, IL 62469 Equipment Sold "AS IS, WHERE IS": All equipment/property is sold "AS IS, WHERE IS" with no warranty or guarantees, expressed or implied, No operational assessments or testing have been made by Del Peterson on this item, it has been photographed ONLY.



#5 - Seedburo/Ohaus Grain Funnel (Item-005)

Seedburo/Ohaus Grain Funnel (Item-005), the Ohaus grain funnel provides for uniform "fall" of grain into a density cup at the proper 2" height for standard bulk density, funnel is placed on the lip of the cup and filled, slide gate lets grain fill and overflow the cup for strike-off. Notes: Item Location: Trilla, IL 62469 Equipment Sold "AS IS, WHERE IS": All equipment/property is sold "AS IS, WHERE IS" with no warranty or guarantees, expressed or implied, No operational assessments or testing have been made by Del Peterson on this item, it has been photographed ONLY.



#6 - Seedburo/Ohaus Grain Funnel (Item-006)

Seedburo/Ohaus Grain Funnel (Item-006), the Ohaus grain funnel provides for uniform "fall" of grain into a density cup at the proper 2" height for standard bulk density, funnel is placed on the lip of the cup and filled, slide gate lets grain fill and overflow the cup for strike-off. Notes: THIS UNIT DOES NOT HAVE THE CUP. Item Location: Trilla, IL 62469 Equipment Sold "AS IS, WHERE IS": All equipment/property is sold "AS IS, WHERE IS" with no warranty or guarantees, expressed or implied, No operational assessments or testing have been made by Del Peterson on this item, it has been photographed ONLY.



#7 - Seedburo/Ohaus Grain Funnel (Item-007)

Seedburo/Ohaus Grain Funnel (Item-007), the Ohaus grain funnel provides for uniform "fall" of grain into a density cup at the proper 2" height for standard bulk density, funnel is placed on the lip of the cup and filled, slide gate lets grain fill and overflow the cup for strike-off. Notes: THE UNIT IS FOR PARTS ONLY NOT COMPLETE. Item Location: Trilla, IL 62469 Equipment Sold "AS IS, WHERE IS": All equipment/property is sold "AS IS, WHERE IS" with no warranty or guarantees, expressed or implied, No operational assessments or testing have been made by Del Peterson on this item, it has been photographed ONLY.



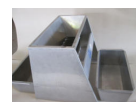
#8 - Small Table Top Lab Sifter/Sizer (Item-008)

Small Table Top Lab Sifter/Sizer (Item-008), table top lab sifter with (6) screens and (3) screen replacements, fan speed is controlled by a variable speed controller, nice condition. Notes: Item Location: Trilla, IL 62469 Equipment Sold "AS IS, WHERE IS": All equipment/property is sold "AS IS, WHERE IS" with no warranty or guarantees, expressed or implied, No operational assessments or testing have been made by Del Peterson on this item, it has been photographed ONLY.



#9 - Humboldt Test Equipment Sample Divider (Item-009)

Humboldt Test Equipment Sample Divider (Item-009), stainless steel construction, can be used with food grade applications, divides 1 large sample into 2 smaller samples, nice condition, click on the link below for more information about this unit. [CLICK HERE FOR INFORMATION](#) Notes: Item Location: Trilla, IL 62469 Equipment Sold "AS IS, WHERE IS": All equipment/property is sold "AS IS, WHERE IS" with no warranty or guarantees, expressed or implied, No operational assessments or testing have been made by Del Peterson on this item, it has been photographed ONLY.



#10 - Research Swanson Single Ear Corn Sheller (Item-010)

Research Swanson Single Ear Corn Sheller (Item-010), single ear corn sheller with aspiration to remove dust from your sample, also has screen for removing cob pieces, motor is single phase 1/3HP 110 volts, unit is in good operating condition. Notes: Item Location: Trilla, IL 62469 Equipment Sold "AS IS, WHERE IS": All equipment/property is sold "AS IS, WHERE IS" with no warranty or guarantees, expressed or implied, No operational assessments or testing have been made by Del Peterson on this item, it has been photographed ONLY.



#11 - Lab Sifter/Sizer (Item-011)

Lab Sifter/Sizer (Item-011), with screens & aspiration for remove light seed & dust, nice condition. Notes: Item Location: Trilla, IL 62469 Equipment Sold "AS IS, WHERE IS": All equipment/property is sold "AS IS, WHERE IS" with no warranty or guarantees, expressed or implied, No operational assessments or testing have been made by Del Peterson on this item, it has been photographed ONLY.



#12 - BRAND NEW Thrifty-Lift M-100 Bucket Elevator (Item-012)

BRAND NEW Thrifty-Lift M-100 Bucket Elevator (Item-012), this unit is NEW, 17' 3" overall height, 15' 6" discharge height, 4" spouting size, this bucket elevator will move 80 bushels per hour, motor is 1/2HP single phase, 110/220 volts. Notes: Item Location: Trilla, IL 62469 Equipment Sold "AS IS, WHERE IS": All equipment/property is sold "AS IS, WHERE IS" with no warranty or guarantees, expressed or implied, No operational assessments or testing have been made by Del Peterson on this item, it has been photographed ONLY.



#13 - "Custom Seed Equipment" Seed Sizer & Screener (Item-013)

"Custom Seed Equipment" Seed Sizer & Screener (Item-013), this unit is made by the Custom Seed Equipment, also know as AEC, this is used on small batches of seed corn or beans for cleaning & sizing the seed to different sizes, it has rubber ball for keeping the screens clean & comes with 9 different size screens: 12/64x3/4 slotted, 12.5/64x3/4 slotted, 13/64x3/4 slotted, 15/16, 17/18, 19/20, 22/23, 24/25 round hole, the motor is 110 volts single phase & has a controller for variable speed shake, unit in in like new condition, was built in 1994, for more information [CLICK HERE](#) Notes: Item Location: Trilla, IL 62469 Equipment Sold "AS IS, WHERE IS": All equipment/property is sold "AS IS, WHERE IS" with no warranty or guarantees, expressed or implied, No operational assessments or testing have been made by Del Peterson on this item, it has been photographed ONLY.



#14 - Kice Lab Size "Multi-Drop" Aspirator (Item-014)

Kice Lab Size "Multi-Drop" Aspirator (Item-014), Model 6DT4, carbon steel, designed aspirating small lots of seed to remove light seeds & material for the product, consists of (1) cyclone with a 3/4HP, 1/60/115/208-230 volt, 3450 motor, filter and a 10 step separator, base mounted, unit is like new. Notes: Item Location: Trilla, IL 62469 Equipment Sold "AS IS, WHERE IS": All equipment/property is sold "AS IS, WHERE IS" with no warranty or guarantees, expressed or implied, No operational assessments or testing have been made by Del Peterson on this item, it has been photographed ONLY.



#15 - Large 3 Phase Electrical Control Box (Item-015)

Large 3 Phase Electrical Control Box (Item-015), 72" tall x 48" wide x 12" deep, it has a Main disconnect, (1) 100 amp 3 pole breaker, (8) 20 amp 3 pole breakers, (9) Square D 7.5HP to 10HP starters, (3) Furnas 3HP to 5HP starters, (1) Square D 3HP to 5HP starters, (2) Square D 1.5HP to 3HP starters, (2) Allen Bradley starters, also on the front of the box it has start & stop switches. Notes: Item Location: Trilla, IL 62469 Equipment Sold "AS IS, WHERE IS": All equipment/property is sold "AS IS, WHERE IS" with no warranty or guarantees, expressed or implied, No operational assessments or testing have been made by Del Peterson on this item, it has been photographed ONLY.



#16 - NEW Wild Bird Food Bags (Item-016)

NEW Wild Bird Food Bags (Item-016), 25lb size, approx. 1,300, bag size 26" x 12" x 3" pleat 3 ply paper. Notes: Item Location: Trilla, IL 62469 Equipment Sold "AS IS, WHERE IS": All equipment/property is sold "AS IS, WHERE IS" with no warranty or guarantees, expressed or implied, No operational assessments or testing have been made by Del Peterson on this item, it has been photographed ONLY.



#17 - NEW Poly Woven Seed Bags (Item-017)

NEW Poly Woven Seed Bags (Item-017), approx. 1,635, bag size 24" x 36", 50lb capacity. Notes: Item Location: Trilla, IL 62469 Equipment Sold "AS IS, WHERE IS": All equipment/property is sold "AS IS, WHERE IS" with no warranty or guarantees, expressed or implied, No operational assessments or testing have been made by Del Peterson on this item, it has been photographed ONLY.



#18 - NEW Poly Woven Seed Bags (Item-018)

NEW Poly Woven Seed Bags (Item-018), approx. 1,800, size 22" x 30", 50lb bag capacity. Notes: Item Location: Trilla, IL 62469 Equipment Sold "AS IS, WHERE IS": All equipment/property is sold "AS IS, WHERE IS" with no warranty or guarantees, expressed or implied, No operational assessments or testing have been made by Del Peterson on this item, it has been photographed ONLY.



#18A - Approx. 1,000 NEW Plain White Poly Bags (Item-018A)

Approx. 1,000 NEW Plain White Poly Bags (Item-018A), these bags are 18" wide and 30" long. Notes: Item Location: Trilla, IL 62469 Equipment Sold "AS IS, WHERE IS": All equipment/property is sold "AS IS, WHERE IS" with no warranty or guarantees, expressed or implied, No operational assessments or testing have been made by Del Peterson on this item, it has been photographed ONLY.



#19 - Bucket Elevator (Item-019)

Bucket Elevator (Item-019), 3 x 4 cup size, this bucket elevator is the same size as the B3 Universal 3 x 4 cups size, it has an overall height of 12' and has been adapted to use Universal B3 trunking, so sections can be added to raise the discharge height (at buyer's expense), motor 3/4HP, 208/230/480 volts, 3 phase, has a capacity range from 75 BPH to 225 BPH by changing head shaft speed, unit is Brand New, Winning bidder will receive brand new belt and plastic cups for machine. Notes: Item Location: Trilla, IL 62469 Equipment Sold "AS IS, WHERE IS": All equipment/property is sold "AS IS, WHERE IS" with no warranty or guarantees, expressed or implied, No operational assessments or testing have been made by Del Peterson on this item, it has been photographed ONLY.



#20 - Fischbein Model A 5604 Heat Sealer (Item-020)

Fischbein Model A 5604 Heat Sealer (Item-020), Model A 5604 heat sealer, 3/4HP motor, 208/230/460 volts, adjustable height, 55" max height, 30" minimum height. Notes: Item Location: Trilla, IL 62469 Equipment Sold "AS IS, WHERE IS": All equipment/property is sold "AS IS, WHERE IS" with no warranty or guarantees, expressed or implied, No operational assessments or testing have been made by Del Peterson on this item, it has been photographed ONLY.



#21 - Food Grade 10" Stainless Steel Screw Conveyor (Item-021)

Food Grade 10" Stainless Steel Screw Conveyor (Item-021), 10' long, 9.5" inlet, 8" outlet, 3/4HP 208/230/460 volts, gear reduced motor, ratio 49.5, auger set at 33 degree angle. Notes: Item Location: Trilla, IL 62469 Equipment Sold "AS IS, WHERE IS": All equipment/property is sold "AS IS, WHERE IS" with no warranty or guarantees, expressed or implied, No operational assessments or testing have been made by Del Peterson on this item, it has been photographed ONLY.



#22 - Universal D 46' Bucket Elevator (Item-022)

Universal D 46' Bucket Elevator (Item-022), 42' 6" discharge height, 46' overall height, 2HP, 208/230/460 volt, 3 phase motor, speed has been set at 1500 BPH, this leg's capacity ranges from 1,000 BU gentle handling to 3,000 BU, cup size for a D Universal is 9" x 5", this bucket elevator has been completely rebuilt, sandblasted and painted, all NEW bearings, gear box has been disassembled and inspected, NEW seals installed, Winning bidder will receive brand new belt and plastic cups for machine. Notes: Item Location: Trilla, IL 62469 Equipment Sold "AS IS, WHERE IS": All equipment/property is sold "AS IS, WHERE IS" with no warranty or guarantees, expressed or implied, No operational assessments or testing have been made by Del Peterson on this item, it has been photographed ONLY.



#23 - Food Grade Stainless Steel Work Table (Item-023)

Food Grade Stainless Steel Work Table (Item-023), 4' wide x 28" deep x 3' high. Notes: Item Location: Trilla, IL 62469 Equipment Sold "AS IS, WHERE IS": All equipment/property is sold "AS IS, WHERE IS" with no warranty or guarantees, expressed or implied, No operational assessments or testing have been made by Del Peterson on this item, it has been photographed ONLY.



#24 - Food Grade Stainless Steel Rolling Conveyor (Item-024)

Food Grade Stainless Steel Rolling Conveyor (Item-024), 24" wide x 13' long, side rails are stainless, roller are plastic, able to be washed down, non-powered. Notes: Item Location: Trilla, IL 62469 Equipment Sold "AS IS, WHERE IS": All equipment/property is sold "AS IS, WHERE IS" with no warranty or guarantees, expressed or implied, No operational assessments or testing have been made by Del Peterson on this item, it has been photographed ONLY.



#25 - Poly Food Grade Forklift Tote (Item-025)

Poly Food Grade Forklift Tote (Item-025), with butterfly gate for unloading, 16" inlet, 8" outlet, overall dimensions are 40" x 40" x 4' 8" tall, tank dimensions are 36" x 36" square, straight part of tank is 24", cone part of tank is 24", Mule brand, NO LID. Notes: Item Location: Trilla, IL 62469 Equipment Sold "AS IS, WHERE IS": All equipment/property is sold "AS IS, WHERE IS" with no warranty or guarantees, expressed or implied, No operational assessments or testing have been made by Del Peterson on this item, it has been photographed ONLY.



#26 - Poly Food Grade Forklift Tote (Item-026)

Poly Food Grade Forklift Tote (Item-026), with butterfly gate for unloading, 16" inlet, 8" outlet, overall dimensions are 40" x 40" x 4' 8" tall, tank dimensions are 36" x 36" square, straight part of tank is 24", cone part of tank is 24", Mule brand, COMES WITH LID. Notes: Item Location: Trilla, IL 62469 Equipment Sold "AS IS, WHERE IS": All equipment/property is sold "AS IS, WHERE IS" with no warranty or guarantees, expressed or implied, No operational assessments or testing have been made by Del Peterson on this item, it has been photographed ONLY.



#27 - Poly Food Grade Forklift Tote (Item-027)

Poly Food Grade Forklift Tote (Item-027), with butterfly gate for unloading, 16" inlet, 8" outlet, overall dimensions are 40" x 40" x 4' 8" tall, tank dimensions are 36" x 36" square, straight part of tank is 24", cone part of tank is 24", Mule brand, NO LID. Notes: Item Location: Trilla, IL 62469 Equipment Sold "AS IS, WHERE IS": All equipment/property is sold "AS IS, WHERE IS" with no warranty or guarantees, expressed or implied, No operational assessments or testing have been made by Del Peterson on this item, it has been photographed ONLY.



#28 - Poly Food Grade Forklift Tote (Item-028)

Poly Food Grade Forklift Tote (Item-028), with butterfly gate for unloading, 16" inlet, 8" outlet, overall dimensions are 40" x 40" x 4' 8" tall, tank dimensions are 36" x 36" square, straight part of tank is 24", cone part of tank is 24", Mule brand, COMES WITH LID. Notes: Item Location: Trilla, IL 62469 Equipment Sold "AS IS, WHERE IS": All equipment/property is sold "AS IS, WHERE IS" with no warranty or guarantees, expressed or implied, No operational assessments or testing have been made by Del Peterson on this item, it has been photographed ONLY.



#29 - Poly Food Grade Forklift Tote (Item-029)

Poly Food Grade Forklift Tote (Item-029), with butterfly gate for unloading, 16" inlet, 8" outlet, overall dimensions are 40" x 40" x 4' 8" tall, tank dimensions are 36" x 36" square, straight part of tank is 24", cone part of tank is 24", Mule brand, NO LID. Notes: Item Location: Trilla, IL 62469 Equipment Sold "AS IS, WHERE IS": All equipment/property is sold "AS IS, WHERE IS" with no warranty or guarantees, expressed or implied, No operational assessments or testing have been made by Del Peterson on this item, it has been photographed ONLY.



#30 - Poly Food Grade Forklift Tote (Item-030)

Poly Food Grade Forklift Tote (Item-030), with butterfly gate for unloading, 16" inlet, 8" outlet, overall dimensions are 40" x 40" x 4' 8" tall, tank dimensions are 36" x 36" square, straight part of tank is 24", cone part of tank is 24", Mule brand, COMES WITH LID. Notes: Item Location: Trilla, IL 62469 Equipment Sold "AS IS, WHERE IS": All equipment/property is sold "AS IS, WHERE IS" with no warranty or guarantees, expressed or implied, No operational assessments or testing have been made by Del Peterson on this item, it has been photographed ONLY.



#31 - Poly Food Grade Forklift Tote (Item-031)

Poly Food Grade Forklift Tote (Item-031), with butterfly gate for unloading, 16" inlet, 8" outlet, overall dimensions are 40" x 40" x 4' 8" tall, tank dimensions are 36" x 36" square, straight part of tank is 24", cone part of tank is 24", Mule brand, COMES WITH LID. Notes: Item Location: Trilla, IL 62469 Equipment Sold "AS IS, WHERE IS": All equipment/property is sold "AS IS, WHERE IS" with no warranty or guarantees, expressed or implied, No operational assessments or testing have been made by Del Peterson on this item, it has been photographed ONLY.



#32 - Poly Food Grade Forklift Tote (Item-032)

Poly Food Grade Forklift Tote (Item-032), with butterfly gate for unloading, 16" inlet, 8" outlet, overall dimensions are 40" x 40" x 4' 8" tall, tank dimensions are 36" x 36" square, straight part of tank is 24", cone part of tank is 24", Mule brand, NO LID. Notes: Item Location: Trilla, IL 62469 Equipment Sold "AS IS, WHERE IS": All equipment/property is sold "AS IS, WHERE IS" with no warranty or guarantees, expressed or implied, No operational assessments or testing have been made by Del Peterson on this item, it has been photographed ONLY.



#33 - Poly Food Grade Forklift Tote (Item-033)

Poly Food Grade Forklift Tote (Item-033), with butterfly gate for unloading, 16" inlet, 8" outlet, overall dimensions are 40" x 40" x 4' 8" tall, tank dimensions are 36" x 36" square, straight part of tank is 24", cone part of tank is 24", Mule brand, COMES WITH LID. Notes: Item Location: Trilla, IL 62469 Equipment Sold "AS IS, WHERE IS": All equipment/property is sold "AS IS, WHERE IS" with no warranty or guarantees, expressed or implied, No operational assessments or testing have been made by Del Peterson on this item, it has been photographed ONLY.



#34 - Poly Food Grade Forklift Tote (Item-034)

Poly Food Grade Forklift Tote (Item-034), with butterfly gate for unloading, 16" inlet, 8" outlet, overall dimensions are 40" x 40" x 4' 8" tall, tank dimensions are 36" x 36" square, straight part of tank is 24", cone part of tank is 24", Mule brand, COMES WITH LID. Notes: Item Location: Trilla, IL 62469 Equipment Sold "AS IS, WHERE IS": All equipment/property is sold "AS IS, WHERE IS" with no warranty or guarantees, expressed or implied, No operational assessments or testing have been made by Del Peterson on this item, it has been photographed ONLY.



#35 - Poly Food Grade Forklift Tote (Item-035)

Poly Food Grade Forklift Tote (Item-035), with butterfly gate for unloading, 36" diameter, 8" outlet, bin dimensions are 12" on the straight part of the bin by 28" on the cone part of the bin, Mule brand, COMES WITH LID. Notes: Item Location: Trilla, IL 62469 Equipment Sold "AS IS, WHERE IS": All equipment/property is sold "AS IS, WHERE IS" with no warranty or guarantees, expressed or implied, No operational assessments or testing have been made by Del Peterson on this item, it has been photographed ONLY.



#36 - Poly Food Grade Forklift Tote (Item-036)

Poly Food Grade Forklift Tote (Item-036), with butterfly gate for unloading, 36" diameter, 8" outlet, bin dimensions are 12" on the straight part of the bin by 28" on the cone part of the bin, Mule brand, NO LID. Notes: Item Location: Trilla, IL 62469 Equipment Sold "AS IS, WHERE IS": All equipment/property is sold "AS IS, WHERE IS" with no warranty or guarantees, expressed or implied, No operational assessments or testing have been made by Del Peterson on this item, it has been photographed ONLY.



#37 - Poly Food Grade Forklift Tote (Item-037)

Poly Food Grade Forklift Tote (Item-037), with butterfly gate for unloading, 16" inlet, 8" outlet, overall dimensions are 40" x 40" x 4' 8" tall, tank dimensions are 36" x 36" square, straight part of tank is 24", cone part of tank is 24", Mule brand, COMES WITH LID. Notes: Item Location: Trilla, IL 62469 Equipment Sold "AS IS, WHERE IS": All equipment/property is sold "AS IS, WHERE IS" with no warranty or guarantees, expressed or implied, No operational assessments or testing have been made by Del Peterson on this item, it has been photographed ONLY.



#38 - Food Grade 10" Stainless Steel Screw Conveyor (Item-038)

Food Grade 10" Stainless Steel Screw Conveyor (Item-038), 10' long, 9.5" inlet, 8" outlet, 3/4HP 208/230/460 volts, gear reduced motor, ratio 49.5, auger set at 33 degree angle. Notes: Item Location: Trilla, IL 62469 Equipment Sold "AS IS, WHERE IS": All equipment/property is sold "AS IS, WHERE IS" with no warranty or guarantees, expressed or implied, No operational assessments or testing have been made by Del Peterson on this item, it has been photographed ONLY.



#39 - Large 3 Phase Electrical Control Box (Item-039)

Large 3 Phase Electrical Control Box (Item-039), 72" tall x 84" wide x 12" deep, (1) Square D 10-25HP starter/contactors(7) Square D 7.5-10HP starters/contactors(12) Square D 3-5HP starters/contactors(43) Square D motor overload relays Notes: Item Location: Trilla, IL 62469 Equipment Sold "AS IS, WHERE IS": All equipment/property is sold "AS IS, WHERE IS" with no warranty or guarantees, expressed or implied, No operational assessments or testing have been made by Del Peterson on this item, it has been photographed ONLY.



#40 - Food Grade Stainless Steel Surge Bin (Item-040)

Food Grade Stainless Steel Surge Bin (Item-040), approx. 15-20 BU capacity, overall dimensions are 108" high x 72" wide x 70" long, hopper dimensions are 66" x 32" x 46" depp. Notes: Item Location: Trilla, IL 62469 Equipment Sold "AS IS, WHERE IS": All equipment/property is sold "AS IS, WHERE IS" with no warranty or guarantees, expressed or implied, No operational assessments or testing have been made by Del Peterson on this item, it has been photographed ONLY.



#41 - Large 3 Phase Electrical Control Box (Item-041)

Large 3 Phase Electrical Control Box (Item-041), 72" tall x 84" wide x 12" deep, (2) Square D, 10-25HP starters/contactors(2) Square D, 7.5-10HP starters/contactors(12) Square D, 3-5HP starters/contactors(22) Square D motor overload relays Notes: Item Location: Trilla, IL 62469 Equipment Sold "AS IS, WHERE IS": All equipment/property is sold "AS IS, WHERE IS" with no warranty or guarantees, expressed or implied, No operational assessments or testing have been made by Del Peterson on this item, it has been photographed ONLY.



#42 - NEW Electrical Thermal Overload Relays (Item-042)

NEW Electrical Thermal Overload Relays (Item-042), and other items, these are extra relays for Lots #39 and #41. Notes: Item Location: Trilla, IL 62469 Equipment Sold "AS IS, WHERE IS": All equipment/property is sold "AS IS, WHERE IS" with no warranty or guarantees, expressed or implied, No operational assessments or testing have been made by Del Peterson on this item, it has been photographed ONLY.



#43 - Carter Day Rotary Air Lock (Item-043)

Carter Day Rotary Air Lock (Item-043), 8" inlet and 8" outlet, Style #8AN, 1/3HP, 3 phase, 230/460 volt. Notes: Item Location: Trilla, IL 62469 Equipment Sold "AS IS, WHERE IS": All equipment/property is sold "AS IS, WHERE IS" with no warranty or guarantees, expressed or implied, No operational assessments or testing have been made by Del Peterson on this item, it has been photographed ONLY.



#44 - Spools of Thread (Item-044)

Spools of Thread (Item-044), quantity 4, large spools of thread for sewing line, (2) of the spools are approx. 15lbs, other (2) are approx. 10lbs. Notes: Item Location: Trilla, IL 62469 Equipment Sold "AS IS, WHERE IS": All equipment/property is sold "AS IS, WHERE IS" with no warranty or guarantees, expressed or implied, No operational assessments or testing have been made by Del Peterson on this item, it has been photographed ONLY.



#45 - 6" Pipe & Elbow Clamps (Item-045)

6" Pipe & Elbow Clamps (Item-045), quantity 25. Notes: Item Location: Trilla, IL 62469 Equipment Sold "AS IS, WHERE IS": All equipment/property is sold "AS IS, WHERE IS" with no warranty or guarantees, expressed or implied, No operational assessments or testing have been made by Del Peterson on this item, it has been photographed ONLY.



#46 - (3) Square D Electrical Disconnects (Item-046)

(3) Square D Electrical Disconnects (Item-046), 30 amp, 240 volt, please see pictures for additional information. Notes: Item Location: Trilla, IL 62469 Equipment Sold "AS IS, WHERE IS": All equipment/property is sold "AS IS, WHERE IS" with no warranty or guarantees, expressed or implied, No operational assessments or testing have been made by Del Peterson on this item, it has been photographed ONLY.



#47 - (2) Acme Step-Down Transformers (Item-047)

(2) Acme Step-Down Transformers (Item-047), goes from 3 phase to single phase, primary volts 240/480, secondary volts 120/240. Notes: Item Location: Trilla, IL 62469 Equipment Sold "AS IS, WHERE IS": All equipment/property is sold "AS IS, WHERE IS" with no warranty or guarantees, expressed or implied, No operational assessments or testing have been made by Del Peterson on this item, it has been photographed ONLY.



#48 - (3) Electrical Junction Boxes (Item-048)

(3) Electrical Junction Boxes (Item-048), (2) of them are 10" x 8" x 4" deep, (1) is 10" x 12" x 6" deep, knock-outs on all sides. Notes: Item Location: Trilla, IL 62469 Equipment Sold "AS IS, WHERE IS": All equipment/property is sold "AS IS, WHERE IS" with no warranty or guarantees, expressed or implied, No operational assessments or testing have been made by Del Peterson on this item, it has been photographed ONLY.



#49 - (2) Square D Wire Ways/Bus Ways (Item-049)

(2) Square D Wire Ways/Bus Ways (Item-049), (1) is 72" long and 4" x 4", (1) is 65" long and 6" x 6". Notes: Item Location: Trilla, IL 62469 Equipment Sold "AS IS, WHERE IS": All equipment/property is sold "AS IS, WHERE IS" with no warranty or guarantees, expressed or implied, No operational assessments or testing have been made by Del Peterson on this item, it has been photographed ONLY.



#50 - (3) ASG Electrical Junction Boxes (Item-050)

(3) ASG Electrical Junction Boxes (Item-050), 18" x 18" x 6" deep. Notes: Item Location: Trilla, IL 62469 Equipment Sold "AS IS, WHERE IS": All equipment/property is sold "AS IS, WHERE IS" with no warranty or guarantees, expressed or implied, No operational assessments or testing have been made by Del Peterson on this item, it has been photographed ONLY.



#51 - 100 Amp Single Phase Breaker Box (Item-051)

100 Amp Single Phase Breaker Box (Item-051), 20 breaker capacity, loaded with (9) 20 amp breakers. Notes: Item Location: Trilla, IL 62469 Equipment Sold "AS IS, WHERE IS": All equipment/property is sold "AS IS, WHERE IS" with no warranty or guarantees, expressed or implied, No operational assessments or testing have been made by Del Peterson on this item, it has been photographed ONLY.



#52 - 150 Amp 3 Phase Breaker Box (Item-052)

150 Amp 3 Phase Breaker Box (Item-052), room for 10 breakers, currently loaded, (5) 15 amp breakers, 3 pole, (2) 20 amp breakers, 3 pole. Notes: Item Location: Trilla, IL 62469 Equipment Sold "AS IS, WHERE IS": All equipment/property is sold "AS IS, WHERE IS" with no warranty or guarantees, expressed or implied, No operational assessments or testing have been made by Del Peterson on this item, it has been photographed ONLY.



#53 - (3) Electric Motor Starters/Contactors Control (Item-053)

(3) Electric Motor Starters/Contactors Control (Item-053), (1) GE 3-10HP, (1) Square D 3-5HP, (1) Cutler Hammer 3-5HP. Notes: Item Location: Trilla, IL 62469 Equipment Sold "AS IS, WHERE IS": All equipment/property is sold "AS IS, WHERE IS" with no warranty or guarantees, expressed or implied, No operational assessments or testing have been made by Del Peterson on this item, it has been photographed ONLY.



#54 - (3) Electric Motor Magnetic Starters/Contactors Control (Item-054)

(3) Electric Motor Magnetic Starters/Contactors Control (Item-054), (1) Allen Bradley 7.5-10HP, (1) Square D 7.5-10HP, (1) Cutler Hammer 3-5HP. Notes: Item Location: Trilla, IL 62469 Equipment Sold "AS IS, WHERE IS": All equipment/property is sold "AS IS, WHERE IS" with no warranty or guarantees, expressed or implied, No operational assessments or testing have been made by Del Peterson on this item, it has been photographed ONLY.



#55 - Forsberg 50 VM Gravity Table (Item-055)

Forsberg 50 VM Gravity Table (Item-055), with fan, 6,000lbs/hr, this unit has a large seed (beans, corn, popcorn, etc.), deck, poly-coated mesh, unit has been thoroughly checked over and serviced, it is in very good condition, comes with 15HP fan, 230/460 volt, which is required to run the unit, the Forsberg Gravity Table incorporates dust control and has built in middlings return leg, it is a 1HP motor that shakes the unit, and it is a 208/230/460 volt. [CLICK HERE FOR VIDEO](#) Notes: Item Location: Trilla, IL 62469 Equipment Sold "AS IS, WHERE IS": All equipment/property is sold "AS IS, WHERE IS" with no warranty or guarantees, expressed or implied, No operational assessments or testing have been made by Del Peterson on this item, it has been photographed ONLY.



#56 - Misc. Square Angle Flanges (Item-056)

Misc. Square Angle Flanges (Item-056), quantity 12, (6) are 6 x 6, (3) are 4 x 4, (1) is 10 x 10, (2) are 6 x 12. Notes: Item Location: Trilla, IL 62469 Equipment Sold "AS IS, WHERE IS": All equipment/property is sold "AS IS, WHERE IS" with no warranty or guarantees, expressed or implied, No operational assessments or testing have been made by Del Peterson on this item, it has been photographed ONLY.



#57 - 4" Flex Auger (Item-057)

4" Flex Auger (Item-057), approx. 45' long, has power head and feed boot, flex auger has been cut but can be welded, has a Dayton motor, 1HP, 180 volt, DC, 1725 RPM, unit has motor control box. Notes: Item Location: Trilla, IL 62469 Equipment Sold "AS IS, WHERE IS": All equipment/property is sold "AS IS, WHERE IS" with no warranty or guarantees, expressed or implied, No operational assessments or testing have been made by Del Peterson on this item, it has been photographed ONLY.



#58 - (2) Redhead Infrared Radiant Heaters (Item-058)

(2) Redhead Infrared Radiant Heaters (Item-058), (1) is Model B50, S/N 7311748, (1) is Model B50, S/N 7312553, heaters measure 30" x 14", each are 50,000 BTU, they use natural gas, these were removed from a seed cleaning facility, we did not see them working, appear to be in good condition, bid accordingly. Notes: Item Location: Trilla, IL 62469 Equipment Sold "AS IS, WHERE IS": All equipment/property is sold "AS IS, WHERE IS" with no warranty or guarantees, expressed or implied, No operational assessments or testing have been made by Del Peterson on this item, it has been photographed ONLY.



#59 - Grain Handler High-Capacity Drag Conveyor (Item-059)

Grain Handler High-Capacity Drag Conveyor (Item-059), unit is 12' long x 18" wide x 14" high, outlet is 14" x 14", inlet is 12.5" x 12.5", unit DOES NOT come with motor. Capacity is 1500-2000 bph. Unit is in very good condition. Notes: Item Location: Trilla, IL 62469 Equipment Sold "AS IS, WHERE IS": All equipment/property is sold "AS IS, WHERE IS" with no warranty or guarantees, expressed or implied, No operational assessments or testing have been made by Del Peterson on this item, it has been photographed ONLY.



#60 - (3) Electrical Disconnects (Item-060)

(3) Electrical Disconnects (Item-060), (1) is ITE, 600 volts - 240 volt, 7.5HP, 480 volt, 15HP, (2) are Square D 30 amp, 240 volts, single phase, 3HP - 240 volt, 3 phase, 7.5HP. Notes: Item Location: Trilla, IL 62469 Equipment Sold "AS IS, WHERE IS": All equipment/property is sold "AS IS, WHERE IS" with no warranty or guarantees, expressed or implied, No operational assessments or testing have been made by Del Peterson on this item, it has been photographed ONLY.



#61 - Honeyville/Fairbank Morse Weight Buggy (Item-061)

Honeyville/Fairbank Morse Weight Buggy (Item-061), Model #41-3160, nice condition, capacity 1,000lbs. Notes: Item Location: Trilla, IL 62469 Equipment Sold "AS IS, WHERE IS": All equipment/property is sold "AS IS, WHERE IS" with no warranty or guarantees, expressed or implied, No operational assessments or testing have been made by Del Peterson on this item, it has been photographed ONLY.



#62 - (3) Square D Disconnects (Item-062)

(3) Square D Disconnects (Item-062), all 3 are 30 amp, 600 vac, (2) of them are 30HP max, (1) is 20HP max. Notes: Item Location: Trilla, IL 62469 Equipment Sold "AS IS, WHERE IS": All equipment/property is sold "AS IS, WHERE IS" with no warranty or guarantees, expressed or implied, No operational assessments or testing have been made by Del Peterson on this item, it has been photographed ONLY.



#63 - Disconnects and Motor Contactor Starters (Item-063)

Disconnects and Motor Contactor Starters (Item-063), (2) Square D disconnects, (1) is 60 amp, 3 phase, 600 vac, 480 volts, 15-30HP - 600 volts, 15-40HP, (1) has no info, (2) Square D motor contactor controls - 200/230/380 volts, 1.5HP max, 460-575 volt, 2HP max. Notes: Item Location: Trilla, IL 62469 Equipment Sold "AS IS, WHERE IS": All equipment/property is sold "AS IS, WHERE IS" with no warranty or guarantees, expressed or implied, No operational assessments or testing have been made by Del Peterson on this item, it has been photographed ONLY.



#64 - (3) Square D Starter/Contactor Motor Controls (Item-064)

(3) Square D Starter/Contactor Motor Controls (Item-064), all three are the same specifications - 200/230/480 volts, 1.5HP max, 460/575 volts, 2HP max. Notes: Item Location: Trilla, IL 62469 Equipment Sold "AS IS, WHERE IS": All equipment/property is sold "AS IS, WHERE IS" with no warranty or guarantees, expressed or implied, No operational assessments or testing have been made by Del Peterson on this item, it has been photographed ONLY.



#65 - (2) Square D 3 Phase Disconnects (Item-065)

(2) Square D 3 Phase Disconnects (Item-065), (1) is 30 amps, 600 vac, 480 volts, 20HP - 600 volts, 30HP, (1) is 100 amp, 600 vac, 75HP max. Notes: Item Location: Trilla, IL 62469 Equipment Sold "AS IS, WHERE IS": All equipment/property is sold "AS IS, WHERE IS" with no warranty or guarantees, expressed or implied, No operational assessments or testing have been made by Del Peterson on this item, it has been photographed ONLY.



#66 - (2) 18" Rolls for Roller Mills (Item-066)

(2) 18" Rolls for Roller Mills (Item-066), drive roll shaft length is 18 1/8", opposite end is 8.5", shaft length on other roll is 14.75" and 8.5", shaft diameter is 2.5", roll diameter is 9", grooves are 16 per inch with 1" spiral. Notes: Item Location: Trilla, IL 62469 Equipment Sold "AS IS, WHERE IS": All equipment/property is sold "AS IS, WHERE IS" with no warranty or guarantees, expressed or implied, No operational assessments or testing have been made by Del Peterson on this item, it has been photographed ONLY.



#67 - (2) 18" Rolls for Roller Mills (Item-067)

(2) 18" Rolls for Roller Mills (Item-066), drive roll shaft length on smooth roll is 18", opposite end is 8.5", shaft length on other roll is 14.5" and 8.5", shaft diameter is 2.5", roll diameter is 8.75", one roll is smooth, the other one is 21 grooves per inch. Notes: Item Location: Trilla, IL 62469 Equipment Sold "AS IS, WHERE IS": All equipment/property is sold "AS IS, WHERE IS" with no warranty or guarantees, expressed or implied, No operational assessments or testing have been made by Del Peterson on this item, it has been photographed ONLY.



#68 - (2) 18" Rolls for Roller Mills (Item-068)

(2) 18" Rolls for Roller Mills (Item-068), drive roll shaft length is 18 1/8", opposite end is 8.5", shaft length on other roll is 14.75" and 8.5", shaft diameter is 2.5", roll diameter is 8.75", grooves are 24 per inch with 1" spiral. Notes: Item Location: Trilla, IL 62469 Equipment Sold "AS IS, WHERE IS": All equipment/property is sold "AS IS, WHERE IS" with no warranty or guarantees, expressed or implied, No operational assessments or testing have been made by Del Peterson on this item, it has been photographed ONLY.



#69 - (2) 18" Rolls for Roller Mills (Item-069)

(2) 18" Rolls for Roller Mills (Item-069), drive roll shaft length is 18 1/8", opposite end is 8.5", shaft length on other roll is 14.75" and 8.5", shaft diameter is 2.5", roll diameter is 8.75", grooves are 18 per inch with 1" spiral on drive. Notes: Item Location: Trilla, IL 62469 Equipment Sold "AS IS, WHERE IS": All equipment/property is sold "AS IS, WHERE IS" with no warranty or guarantees, expressed or implied, No operational assessments or testing have been made by Del Peterson on this item, it has been photographed ONLY.



#70 - (60) NEW Electrical Conduit Boxes (Item-070)

(60) NEW Electrical Conduit Boxes (Item-070), 3 1/2" deep, 2 gang solid welded style, masonry zinc box 3.75" x 3.75" x 3" deep, Brand Name Garvin. Notes: Item Location: Trilla, IL 62469 Equipment Sold "AS IS, WHERE IS": All equipment/property is sold "AS IS, WHERE IS" with no warranty or guarantees, expressed or implied, No operational assessments or testing have been made by Del Peterson on this item, it has been photographed ONLY.



#71 - (60) NEW Electrical Conduit Boxes (Item-071)

(60) NEW Electrical Conduit Boxes (Item-071), 3 1/2" deep, 2 gang solid welded style, masonry zinc box 3.75" x 3.75" x 3" deep, Brand Name Garvin. Notes: Item Location: Trilla, IL 62469 Equipment Sold "AS IS, WHERE IS": All equipment/property is sold "AS IS, WHERE IS" with no warranty or guarantees, expressed or implied, No operational assessments or testing have been made by Del Peterson on this item, it has been photographed ONLY.



#72 - Greenlee Conduit Benders (Item-072)

Greenlee Conduit Benders (Item-072), 1" and 1/2" capacity, the 1" is 4' long, the 1/2" is 2'6" long. Notes: Item Location: Trilla, IL 62469 Equipment Sold "AS IS, WHERE IS": All equipment/property is sold "AS IS, WHERE IS" with no warranty or guarantees, expressed or implied, No operational assessments or testing have been made by Del Peterson on this item, it has been photographed ONLY.



#73 - NEW Compression Type EMT Conduit Couplings (Item-073)

NEW Compression Type EMT Conduit Couplings (Item-073), sizes are 3/4", 1 1/4" and 2". Notes: Item Location: Trilla, IL 62469 Equipment Sold "AS IS, WHERE IS": All equipment/property is sold "AS IS, WHERE IS" with no warranty or guarantees, expressed or implied, No operational assessments or testing have been made by Del Peterson on this item, it has been photographed ONLY.



#74 - Big Chief Corn Cutter / Screener (Item-074)

Big Chief Corn Cutter / Screener (Item-074), 5HP, 1750 RPM, 220/440 volts, 3 phase, 2 screen unit, top screen is 8x8 square mesh, bottom screen is 16x16 square mesh, unit has bag holder at bottom, Hammer Mill screen is 24/64 round, coarse cut is 4,000 lbs/hr, medium cut is 2,500 lbs/hr, and chick size is 1,000 lbs/hr, unit is in good, serviceable condition, excellent unit for making scratch and other feeds. Notes: Item Location: Trilla, IL 62469 Equipment Sold "AS IS, WHERE IS": All equipment/property is sold "AS IS, WHERE IS" with no warranty or guarantees, expressed or implied, No operational assessments or testing have been made by Del Peterson on this item, it has been photographed ONLY.



#75 - Catwalk (Item-075)

Catwalk (Item-075), 5' 9" long x 24" wide x 42" high handrails. Notes: Item Location: Trilla, IL 62469 Equipment Sold "AS IS, WHERE IS": All equipment/property is sold "AS IS, WHERE IS" with no warranty or guarantees, expressed or implied, No operational assessments or testing have been made by Del Peterson on this item, it has been photographed ONLY.



#76 - (6) Pieces of 6" Down Spouting (Item-076)

(6) Pieces of 6" Down Spouting (Item-076), lengths are as follows: 27", 48", 50", 53", 118" and 172", total length is 39'. Notes: Item Location: Trilla, IL 62469 Equipment Sold "AS IS, WHERE IS": All equipment/property is sold "AS IS, WHERE IS" with no warranty or guarantees, expressed or implied, No operational assessments or testing have been made by Del Peterson on this item, it has been photographed ONLY.



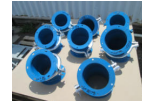
#77 - (12) Pieces of 6" Galvanized Down Spouting (Item-077)

(12) Pieces of 6" Galvanized Down Spouting (Item-077), lengths are a follows: 63", 65", 66", 67", 73", 92", 99", 117", 119", 125", 185" and 217", total length of spouting is 105 feet. Notes: Item Location: Trilla, IL 62469 Equipment Sold "AS IS, WHERE IS": All equipment/property is sold "AS IS, WHERE IS" with no warranty or guarantees, expressed or implied, No operational assessments or testing have been made by Del Peterson on this item, it has been photographed ONLY.



#78 - (8) 6" Adjustable Elbows w/ Clamp Bands (Item-078)

(8) 6" Adjustable Elbows w/ Clamp Bands (Item-078). Notes: Item Location: Trilla, IL 62469 Equipment Sold "AS IS, WHERE IS": All equipment/property is sold "AS IS, WHERE IS" with no warranty or guarantees, expressed or implied, No operational assessments or testing have been made by Del Peterson on this item, it has been photographed ONLY.



#79 - (12) Pieces of 6" Galvanized Down Spouting (Item-079)

(12) Pieces of 6" Galvanized Down Spouting (Item-079), lengths are as follows: 25", 33", 34", 34", 38" w/ sample port, 39", 42" w/ sample port, 43" w/ sample port, 46", 52", 55", and 65", total length is 42 feet. Notes: Item Location: Trilla, IL 62469 Equipment Sold "AS IS, WHERE IS": All equipment/property is sold "AS IS, WHERE IS" with no warranty or guarantees, expressed or implied, No operational assessments or testing have been made by Del Peterson on this item, it has been photographed ONLY.



#80 - (17) 4" Down Spouting (Item-080)

(17) 4" Down Spouting (Item-080), 2 pieces have cut gate, lengths are as follows: 4" slide valve, 12", 12" clamp collar, 15", 16" - 45 degree angle, 17" w/ weld on slide valve, 22", 28", 32", 43", 53", 61", 67", 69" w/ flange, 72", 78" and 79", total length is 56 feet. Notes: Item Location: Trilla, IL 62469 Equipment Sold "AS IS, WHERE IS": All equipment/property is sold "AS IS, WHERE IS" with no warranty or guarantees, expressed or implied, No operational assessments or testing have been made by Del Peterson on this item, it has been photographed ONLY.



#81 - (8) 6" Elbows w/ Clamps (Item-081)

(8) 6" Elbows w/ Clamps (Item-081). Notes: Item Location: Trilla, IL 62469 Equipment Sold "AS IS, WHERE IS": All equipment/property is sold "AS IS, WHERE IS" with no warranty or guarantees, expressed or implied, No operational assessments or testing have been made by Del Peterson on this item, it has been photographed ONLY.



#82 - 8" 3-way Valve w/ 8" Square-to-Round Transition (Item-082)

8" 3-way Valve w/ 8" Square-to-Round Transition (Item-082). Notes: Item Location: Trilla, IL 62469 Equipment Sold "AS IS, WHERE IS": All equipment/property is sold "AS IS, WHERE IS" with no warranty or guarantees, expressed or implied, No operational assessments or testing have been made by Del Peterson on this item, it has been photographed ONLY.



#83 - (13) Pieces of 4" Galvanized Down Spouting (Item-083)

(13) Pieces of 4" Galvanized Down Spouting (Item-083), has 1 clamp and 1 cut gate, lengths are as follows: 15", 16", 18", 20", 22", 25", 28", 30", 43", 51", 71", 84" and 111", total length is 44 feet. Notes: Item Location: Trilla, IL 62469 Equipment Sold "AS IS, WHERE IS": All equipment/property is sold "AS IS, WHERE IS" with no warranty or guarantees, expressed or implied, No operational assessments or testing have been made by Del Peterson on this item, it has been photographed ONLY.



#84 - (3) 8" Adjustable Angle Cushion Boxes (Item-084)

(3) 8" Adjustable Angle Cushion Boxes (Item-084), for down spouting. Notes: Item Location: Trilla, IL 62469 Equipment Sold "AS IS, WHERE IS": All equipment/property is sold "AS IS, WHERE IS" with no warranty or guarantees, expressed or implied, No operational assessments or testing have been made by Del Peterson on this item, it has been photographed ONLY.



#85 - (6) Pieces of 8" Down Spouting (Item-085)

(6) Pieces of 8" Down Spouting (Item-085), lengths are as follows: 26", 27", 42", 44", 70" and 78", total length is 29 feet. Notes: Item Location: Trilla, IL 62469 Equipment Sold "AS IS, WHERE IS": All equipment/property is sold "AS IS, WHERE IS" with no warranty or guarantees, expressed or implied, No operational assessments or testing have been made by Del Peterson on this item, it has been photographed ONLY.



#86 - Allen Bradley 60-75HP Soft Start Starter (Item-086)

Allen Bradley 60-75HP Soft Start Starter (Item-086), manual controlled, 220/440 volts. Notes: Item Location: Trilla, IL 62469 Equipment Sold "AS IS, WHERE IS": All equipment/property is sold "AS IS, WHERE IS" with no warranty or guarantees, expressed or implied, No operational assessments or testing have been made by Del Peterson on this item, it has been photographed ONLY.



#87 - (7) Kice 4" Adjustable Elbows & 2-way Valve (Item-087)

(7) Kice 4" Adjustable Elbows & 2-way Valve (Item-087), 2 elbows are fixed at 45 degree, all have dust tight connection sleeves & clamps, (1) Kice 2 way valve. Notes: Item Location: Trilla, IL 62469 Equipment Sold "AS IS, WHERE IS": All equipment/property is sold "AS IS, WHERE IS" with no warranty or guarantees, expressed or implied, No operational assessments or testing have been made by Del Peterson on this item, it has been photographed ONLY.



#88 - (8) Kice 4" Adjustable Elbows & 2-way Valve (Item-088)

(8) Kice 4" Adjustable Elbows & 2-way Valve (Item-088), all have dust tight connection sleeves & clamps, (1) Kice 2-way valve. Notes: Item Location: Trilla, IL 62469 Equipment Sold "AS IS, WHERE IS": All equipment/property is sold "AS IS, WHERE IS" with no warranty or guarantees, expressed or implied, No operational assessments or testing have been made by Del Peterson on this item, it has been photographed ONLY.



#89 - (8) Kice 4" Adjustable Elbows & 2-way Valve (Item-089)

(8) Kice 4" Adjustable Elbows & 2-way Valve (Item-089), all have dust tight connection sleeves & clamps, (1) Kice 2-way valve. Notes: Item Location: Trilla, IL 62469 Equipment Sold "AS IS, WHERE IS": All equipment/property is sold "AS IS, WHERE IS" with no warranty or guarantees, expressed or implied, No operational assessments or testing have been made by Del Peterson on this item, it has been photographed ONLY.



#90 - (8) Kice 4" Adjustable Elbows & 2-way Valve (Item-090)

(8) Kice 4" Adjustable Elbows & 2-way Valve (Item-090), all have dust tight connection sleeves & clamps, (1) Kice 2-way valve. Notes: Item Location: Trilla, IL 62469 Equipment Sold "AS IS, WHERE IS": All equipment/property is sold "AS IS, WHERE IS" with no warranty or guarantees, expressed or implied, No operational assessments or testing have been made by Del Peterson on this item, it has been photographed ONLY.



#91 - South Dakota Seed Blower Lab Size (Item-091)

South Dakota Seed Blower Lab Size (Item-091), this unit has a 4" tube, adjustable air intake, motor size is 1/3HP, single phase, 110 volts, table is on casters for easy moving Literature is in PDF format. Notes: Item Location: Trilla, IL 62469 Equipment Sold "AS IS, WHERE IS": All equipment/property is sold "AS IS, WHERE IS" with no warranty or guarantees, expressed or implied, No operational assessments or testing have been made by Del Peterson on this item, it has been photographed ONLY.



#92 - Strong-Scott No. 12 Fan 7.5HP (Item-092)

Strong-Scott No. 12 Fan 7.5HP (Item-092), 12" inlet, 11" outlet, 220/440 volts, 3 phase, 1750 RPM, HIGH pressure fan. Notes: Item Location: Trilla, IL 62469 Equipment Sold "AS IS, WHERE IS": All equipment/property is sold "AS IS, WHERE IS" with no warranty or guarantees, expressed or implied, No operational assessments or testing have been made by Del Peterson on this item, it has been photographed ONLY.



#93 - (3) Rack & Pinion Gates (Item-093)

(3) Rack & Pinion Gates (Item-093), (2) 8" and (1) 10" gates. Notes: Item Location: Trilla, IL 62469 Equipment Sold "AS IS, WHERE IS": All equipment/property is sold "AS IS, WHERE IS" with no warranty or guarantees, expressed or implied, No operational assessments or testing have been made by Del Peterson on this item, it has been photographed ONLY.



#94 - (4) Pneumatic Air Cylinders (Item-094)

(4) Pneumatic Air Cylinders (Item-094), Rexroth Task master air cylinders, (3) are 2" x 12", (1) is 2" x 10". Notes: Item Location: Trilla, IL 62469 Equipment Sold "AS IS, WHERE IS": All equipment/property is sold "AS IS, WHERE IS" with no warranty or guarantees, expressed or implied, No operational assessments or testing have been made by Del Peterson on this item, it has been photographed ONLY.



#95 - Food Grade Stainless Steel Pneumatic Cutt-Off Gates (Item-095)

Food Grade Stainless Steel Pneumatic Cutt-Off Gates (Item-095), year built 7/2011, these are air & electric controlled, made in Germany. Notes: Item Location: Trilla, IL 62469 Equipment Sold "AS IS, WHERE IS": All equipment/property is sold "AS IS, WHERE IS" with no warranty or guarantees, expressed or implied, No operational assessments or testing have been made by Del Peterson on this item, it has been photographed ONLY.



#96 - (15) 8" Clamp Band for Down Spouting (Item-096)

(15) 8" Clamp Band for Down Spouting (Item-096), with bolts. Notes: Item Location: Trilla, IL 62469 Equipment Sold "AS IS, WHERE IS": All equipment/property is sold "AS IS, WHERE IS" with no warranty or guarantees, expressed or implied, No operational assessments or testing have been made by Del Peterson on this item, it has been photographed ONLY.



#97 - (27) 6" Clamp Band for Down Spouting (Item-097)

(27) 6" Clamp Band for Down Spouting (Item-097). Notes: Item Location: Trilla, IL 62469 Equipment Sold "AS IS, WHERE IS": All equipment/property is sold "AS IS, WHERE IS" with no warranty or guarantees, expressed or implied, No operational assessments or testing have been made by Del Peterson on this item, it has been photographed ONLY.



#98 - (28) 6" Clamp Band for Down Spouting (Item-098)

(28) 6" Clamp Band for Down Spouting (Item-098). Notes: Item Location: Trilla, IL 62469 Equipment Sold "AS IS, WHERE IS": All equipment/property is sold "AS IS, WHERE IS" with no warranty or guarantees, expressed or implied, No operational assessments or testing have been made by Del Peterson on this item, it has been photographed ONLY.



#99 - (2) Pneumatic Slide Gates (Item-099)

(2) Pneumatic Slide Gates (Item-099), (1) is 8" x 8", the other is 16.6" x 8". Notes: Item Location: Trilla, IL 62469 Equipment Sold "AS IS, WHERE IS": All equipment/property is sold "AS IS, WHERE IS" with no warranty or guarantees, expressed or implied, No operational assessments or testing have been made by Del Peterson on this item, it has been photographed ONLY.



#100 - Almaco Bundle Thresher (Item-100)

Almaco Bundle Thresher (Item-100), Model SBT, single phase, 110 volts, 2 concaves, one rubber and one spike tooth cylinders. Notes: Item Location: Trilla, IL 62469 Equipment Sold "AS IS, WHERE IS": All equipment/property is sold "AS IS, WHERE IS" with no warranty or guarantees, expressed or implied, No operational assessments or testing have been made by Del Peterson on this item, it has been photographed ONLY.



#101 - Misc. Electrical Components (Item-101)

Misc. Electrical Components (Item-101), (9) line breaks (LB's), (4) 1.25-2.25", (3) 2", (1) 2.5-3", (1) 3.5-4", (10) 2" 90 degree elbow sweeps, (6) 1.25" 90 degree elbow sweeps, (2) electrical light sockets, (1) 18" x 18" junction box, 6" deep. Notes: Item Location: Trilla, IL 62469 Equipment Sold "AS IS, WHERE IS": All equipment/property is sold "AS IS, WHERE IS" with no warranty or guarantees, expressed or implied, No operational assessments or testing have been made by Del Peterson on this item, it has been photographed ONLY.



#102 - Dodge TXT Reducer w/ 7.5HP Motor (Item-102)

Dodge TXT Reducer w/ 7.5HP Motor (Item-102), motor specs are volts 220-230/440-460, 1745 RPM, ratio is 14.71 to 1, input shaft on reducer is 1 1/4", output shaft is 1 1/2", pulley on motor is 3.25, pulley for reducer is 19". Notes: Item Location: Trilla, IL 62469 Equipment Sold "AS IS, WHERE IS": All equipment/property is sold "AS IS, WHERE IS" with no warranty or guarantees, expressed or implied, No operational assessments or testing have been made by Del Peterson on this item, it has been photographed ONLY.



#103 - Square D Electrical Disconnects & Meter Box (Item-103)

Square D Electrical Disconnects & Meter Box (Item-103), Square D fused disconnect - 100 amp, 600 vac, 60-75HP, (1) GE disconnect - 30 amp, max 7.5HP, 3 pull Cutler Hammer Motor Control Box. Notes: Item Location: Trilla, IL 62469 Equipment Sold "AS IS, WHERE IS": All equipment/property is sold "AS IS, WHERE IS" with no warranty or guarantees, expressed or implied, No operational assessments or testing have been made by Del Peterson on this item, it has been photographed ONLY.



#104 - 48" Brass Seedburo Grain Probe (Item-104)

48" Brass Seedburo Grain Probe (Item-104), nice condition. Notes: Item Location: Trilla, IL 62469 Equipment Sold "AS IS, WHERE IS": All equipment/property is sold "AS IS, WHERE IS" with no warranty or guarantees, expressed or implied, No operational assessments or testing have been made by Del Peterson on this item, it has been photographed ONLY.



#105 - Clipper Super 298D Cleaner (Item-105)

Clipper Super 298D Cleaner (Item-105), with 10HP motor, 230/460 3 phase motor, this unit comes with 1 set (4 screens) for wheat, the capacity of this mill is 100 to 300 BPH, this is one of Clippers best models, it will clean any type of free flowing grain from clover to corn, this is a (4) screen model with top & bottom air aspiration, this unit has also been updated with the newest style of Clipper ball trays, read the literature link below to learn more about this cleaner. it comes with a welded 48" stand and small feed hopper, pictures have been attached of the stand that the cleaner sits on, the surge hopper to feed the cleaner, and clean grain collection spout. CLICK HERE FOR VIDEO Notes: Item Location: Trilla, IL 62469 Equipment Sold "AS IS, WHERE IS": All equipment/property is sold "AS IS, WHERE IS" with no warranty or guarantees, expressed or implied, No operational assessments or testing have been made by Del Peterson on this item, it has been photographed ONLY.



#106 - (55) 5" x 4" Dura-Buket Bucket Elevator Cups (Item-106)

(55) 5" x 4" Dura-Buket Bucket Elevator Cups (Item-106), used but serviceable condition, color black. Notes: Item Location: Trilla, IL 62469 Equipment Sold "AS IS, WHERE IS": All equipment/property is sold "AS IS, WHERE IS" with no warranty or guarantees, expressed or implied, No operational assessments or testing have been made by Del Peterson on this item, it has been photographed ONLY.



#107 - (2) 6" K Valves (Item-107)

(2) 6" K Valves (Item-107). Notes: Item Location: Trilla, IL 62469 Equipment Sold "AS IS, WHERE IS": All equipment/property is sold "AS IS, WHERE IS" with no warranty or guarantees, expressed or implied, No operational assessments or testing have been made by Del Peterson on this item, it has been photographed ONLY.



#108 - Clipper TR-2609 D Grain Cleaner (Item-108)

Clipper TR-2609 D Grain Cleaner (Item-108), this is a 2 screen cleaner, 42" x 60", its flow pattern is scalp-sift, has been updated with permanent mount ball trays, has top air, 5HP, 230-460 volts, 3 phase, unit has been cleaned, checked over, worn parts replaced, and is in good serviceable condition, currently has corn screens in it, winner can exchange those for 1 set of screens of their choice, unit would work good for a receiving cleaner or cleaning cover crops, precision cleaning capacity 150-200 bushel per hour, market cleaning / fast cleaning is 300-500 bushel per hour. CLICK HERE FOR VIDEO Notes: Item Location: Trilla, IL 62469 Equipment Sold "AS IS, WHERE IS": All equipment/property is sold "AS IS, WHERE IS" with no warranty or guarantees, expressed or implied, No operational assessments or testing have been made by Del Peterson on this item, it has been photographed ONLY.



#109 - Variable Speed Belt Feeder / Conveyor (Item-109)

Variable Speed Belt Feeder / Conveyor (Item-109), Dorner 6200 Series, Model #624M050400A0102, manufacturing date 02-24-2004, 4' L x 5" W x 1.5" deep, 1/4HP, 130 volts, hopper is 3.5" W x 6" L x 6" deep, unit is 3' high, runs well. Notes: Item Location: Trilla, IL 62469 Equipment Sold "AS IS, WHERE IS": All equipment/property is sold "AS IS, WHERE IS" with no warranty or guarantees, expressed or implied, No operational assessments or testing have been made by Del Peterson on this item, it has been photographed ONLY.



#110 - Fischbein Handheld Sewer (Item-110)

Fischbein Handheld Sewer (Item-110), Model EC R, unit was serviced by Des Moines Sewing Machine Company, 110 volts, single phase, unit is in good condition. Notes: Item Location: Trilla, IL 62469 Equipment Sold "AS IS, WHERE IS": All equipment/property is sold "AS IS, WHERE IS" with no warranty or guarantees, expressed or implied, No operational assessments or testing have been made by Del Peterson on this item, it has been photographed ONLY.



#111 - Sukup 12" Grain Bin Fan (Item-111)

Sukup 12" Grain Bin Fan (Item-111), like new condition, 115 volts, single phase, 3450 RPM, 208-230 volts. Notes: Item Location: Trilla, IL 62469 Equipment Sold "AS IS, WHERE IS": All equipment/property is sold "AS IS, WHERE IS" with no warranty or guarantees, expressed or implied, No operational assessments or testing have been made by Del Peterson on this item, it has been photographed ONLY.



#112 - Clipper Hand Testing Screen Set (Item-112)

Clipper Hand Testing Screen Set (Item-112), 9" x 9", with storage rack, (24) piece set in good condition, sizes are as follows: 9 tri, 10 tri, 11 tri, 6 x 3/4 slot, 8 x 3/4 slot, 10 x 3/4 slot, 12 x 3/4 slot, 13 x 3/4 slot, 14 x 3/4 slot, 15 x 3/4 slot, 16 x 3/4 slot, 18 x 3/4 slot, 20 x 3/4 slot, 8rd, 10rd, 12rd, 14rd, 15rd, 16rd, 18rd, 20rd, 22rd, and 2 blanks / pans. Notes: Item Location: Trilla, IL 62469 Equipment Sold "AS IS, WHERE IS": All equipment/property is sold "AS IS, WHERE IS" with no warranty or guarantees, expressed or implied, No operational assessments or testing have been made by Del Peterson on this item, it has been photographed ONLY.



#113 - Nester Box Inverter / Buckhorn Pro Box Flipper (Item-113)

Nester Box Inverter / Buckhorn Pro Box Flipper (Item-113), forklift attachment, this allows one man to nest pro-boxes. Notes: Item Location: Trilla, IL 62469 Equipment Sold "AS IS, WHERE IS": All equipment/property is sold "AS IS, WHERE IS" with no warranty or guarantees, expressed or implied, No operational assessments or testing have been made by Del Peterson on this item, it has been photographed ONLY.



#114 - Creamer 10" 4-Hole Grain Diverter (Item-114)

Creamer 10" 4-Hole Grain Diverter (Item-114), this unit is NEW & was NEVER used. Notes: Item Location: Trilla, IL 62469 Equipment Sold "AS IS, WHERE IS": All equipment/property is sold "AS IS, WHERE IS" with no warranty or guarantees, expressed or implied, No operational assessments or testing have been made by Del Peterson on this item, it has been photographed ONLY.



#115 - (2) Pieces of Catwalk (Item-115)

(2) Pieces of Catwalk (Item-115), (1) is 16' long x 2' wide x 3'6" high, (1) is 8' long x 2' wide x 3'6" high. Notes: Item Location: Trilla, IL 62469 Equipment Sold "AS IS, WHERE IS": All equipment/property is sold "AS IS, WHERE IS" with no warranty or guarantees, expressed or implied, No operational assessments or testing have been made by Del Peterson on this item, it has been photographed ONLY.



#116 - Sewing Line System With Conveyor (Item-116)

Sewing Line System With Conveyor (Item-116), the sewing head is a Union Special, Model 80600E, single phase, 110 volts, the head was rebuilt in 2016, the conveyor is 8'8" long and is "V" type, the sewing pedestal is adjustable height. Notes: Item Location: Trilla, IL 62469 Equipment Sold "AS IS, WHERE IS": All equipment/property is sold "AS IS, WHERE IS" with no warranty or guarantees, expressed or implied, No operational assessments or testing have been made by Del Peterson on this item, it has been photographed ONLY.



#117 - Piece of Catwalk (Item-117)

Piece of Catwalk (Item-117), 30" wide x 88" long x 48" high. Notes: Item Location: Trilla, IL 62469 Equipment Sold "AS IS, WHERE IS": All equipment/property is sold "AS IS, WHERE IS" with no warranty or guarantees, expressed or implied, No operational assessments or testing have been made by Del Peterson on this item, it has been photographed ONLY.



#118 - Clipper Hand Testing Screen Set (Item-118)

Clipper Hand Testing Screen Set (Item-118), with storage rack, (24) piece set in good condition, sizes are as follows: 10 tri, 11 double tri, 12 tri, 4 7/8 x 3/4 slot, 5 x 3/4 slot, 5.5 x 3/4 slot, 6 x 3/4 slot, 6.5 x 3/4 slot, 7 x 3/4 slot, 8 x 3/4 slot, 9 x 3/4 slot, 13 x 3/4 slot, 6.5 rd, 7 rd, 7.5 rd, 8 rd, 11 rd, 12 rd, 14 rd, 20 rd, 22 rd, 24 rd, and 2 blanks / pans. Notes: Item Location: Trilla, IL 62469 Equipment Sold "AS IS, WHERE IS": All equipment/property is sold "AS IS, WHERE IS" with no warranty or guarantees, expressed or implied, No operational assessments or testing have been made by Del Peterson on this item, it has been photographed ONLY.



#119 - Kice 4" Adjustable Elbows (Item-119)

Kice 4" Adjustable Elbows (Item-119), (7) total elbows with dust seals. Notes: Item Location: Trilla, IL 62469 Equipment Sold "AS IS, WHERE IS": All equipment/property is sold "AS IS, WHERE IS" with no warranty or guarantees, expressed or implied, No operational assessments or testing have been made by Del Peterson on this item, it has been photographed ONLY.



#120 - Kice 4" Aluminum Adjustable Elbows (Item-120)

Kice 4" Aluminum Adjustable Elbows (Item-120), (6) total elbows with dust seals and (1) fixed elbow. Notes: Item Location: Trilla, IL 62469 Equipment Sold "AS IS, WHERE IS": All equipment/property is sold "AS IS, WHERE IS" with no warranty or guarantees, expressed or implied, No operational assessments or testing have been made by Del Peterson on this item, it has been photographed ONLY.



#121 - Clipper Hand Testing Screen Set (Item-121)

Clipper Hand Testing Screen Set (Item-121), 12" x 12", (24) piece set in good condition, sized are as follows: 9 tri, 11 tri, 12 tri, 6.5 x 3/4 slot, 7 x 3/4 slot, 7.5 x 3/4 slot, 8 x 3/4 slot, 13 x 3/4 slot, 3 x 5/16 slot, 1/12 x 1/2 slot, 1/13 x 1/2 slot, 1/14 x 1/2 slot, 1/15 x 1/2 slot, 1/25 rd, 6 rd, 7 rd, 10 rd, 12 rd, 15 rd, 17 rd, 22 rd, 24 rd, and 2 blanks / pans. Notes: Item Location: Trilla, IL 62469 Equipment Sold "AS IS, WHERE IS": All equipment/property is sold "AS IS, WHERE IS" with no warranty or guarantees, expressed or implied, No operational assessments or testing have been made by Del Peterson on this item, it has been photographed ONLY.



#122 - Clipper Hand Testing Screen Set (Item-122)

Clipper Hand Testing Screen Set (Item-122), 12" x 12", (18) piece set in good condition, sized are as follows: 10 tri, 11 tri, 5 x 3/4 slot, 5.5 x 3/4 slot, 6 x 3/4 slot, 9 x 3/4 slot, 13 x 3/4 slot, 1/12 x 1/2 slot, 1/13 x 1/2 slot, 1/14 x 1/2 slot, 11 rd, 12 rd, 18 rd, 21 rd, 22 rd, 23 rd, 24 rd, and 1 blank / pan. Notes: Item Location: Trilla, IL 62469 Equipment Sold "AS IS, WHERE IS": All equipment/property is sold "AS IS, WHERE IS" with no warranty or guarantees, expressed or implied, No operational assessments or testing have been made by Del Peterson on this item, it has been photographed ONLY.



#123 - Ohaus Triple Beam Balance 700 Series Scale (Item-123)

Ohaus Triple Beam Balance 700 Series Scale (Item-123), the triple beam balances feature notched and tiered beams for ease in reading, positive poise positioning for repeatability, a magnetic damper for fast, accurate weighing and zero adjust compensator, max capacity 2610 grams or 5lbs 2 oz. Notes: Item Location: Trilla, IL 62469 Equipment Sold "AS IS, WHERE IS": All equipment/property is sold "AS IS, WHERE IS" with no warranty or guarantees, expressed or implied, No operational assessments or testing have been made by Del Peterson on this item, it has been photographed ONLY.



#124 - Clipper Hand Testing Screen Set (Item-124)

Clipper Hand Testing Screen Set (Item-124), 9" x 9", (24) pieces, Wire Mesh Sizes: blank, 6 x 14, 6 x 15, 6 x 21, 6 x 22, 6 x 23, 6 x 24, 6 x 25, 6 x 26, 6 x 28, 6 x 30, 6 x 32, 6 x 34, 6 x 36, 6 x 38, 6 x 40, 4 x 24, 4 x 26, Perforated Metal Sizes: 1/15 rd, 1/16 rd, 1/17 rd, 1/18 rd, 1/20 rd, 1/25 rd, all in good condition. Notes: Item Location: Trilla, IL 62469 Equipment Sold "AS IS, WHERE IS": All equipment/property is sold "AS IS, WHERE IS" with no warranty or guarantees, expressed or implied, No operational assessments or testing have been made by Del Peterson on this item, it has been photographed ONLY.



#125 - Blue Hopper Bin / Surge Bin (Item-125)

Blue Hopper Bin / Surge Bin (Item-125), 55" wide x 36" long, flat part of bin is 18" deep, cone part is 34" deep, overall height is 60", 10" x 10" square flange discharge. Notes: Item Location: Trilla, IL 62469 Equipment Sold "AS IS, WHERE IS": All equipment/property is sold "AS IS, WHERE IS" with no warranty or guarantees, expressed or implied, No operational assessments or testing have been made by Del Peterson on this item, it has been photographed ONLY.



#126 - Blue Hopper Bin / Surge Bin (Item-126)

Blue Hopper Bin / Surge Bin (Item-126), 55" wide x 36" long, flat part of bin is 18" deep, cone part is 34" deep, overall height is 60", 10" x 10" square flange discharge. Notes: Item Location: Trilla, IL 62469 Equipment Sold "AS IS, WHERE IS": All equipment/property is sold "AS IS, WHERE IS" with no warranty or guarantees, expressed or implied, No operational assessments or testing have been made by Del Peterson on this item, it has been photographed ONLY.



#127 - (2) Steel Transitions /Rubber Lined (Item-127)

(2) Steel Transitions /Rubber Lined (Item-127), (1) is 18" x 18" down to 18" x 12", the other is 21" x 21" down to 21" x 15", the height of both transitions is 12". Notes: Item Location: Trilla, IL 62469 Equipment Sold "AS IS, WHERE IS": All equipment/property is sold "AS IS, WHERE IS" with no warranty or guarantees, expressed or implied, No operational assessments or testing have been made by Del Peterson on this item, it has been photographed ONLY.



#128 - (2) Steel Transitions (Item-128)

(2) Steel Transitions (Item-128), (1) is 41" x 12" down to 36" x 8" and is 16" deep with an 8" round discharge, the other transition is 39" x 11" down to 36" x 8" and is 18" deep with an 8" round discharge, the height of both transitions is 12". Notes: Item Location: Trilla, IL 62469 Equipment Sold "AS IS, WHERE IS": All equipment/property is sold "AS IS, WHERE IS" with no warranty or guarantees, expressed or implied, No operational assessments or testing have been made by Del Peterson on this item, it has been photographed ONLY.



#129 - (2) Steel Hopper Bottoms (Item-129)

(2) Steel Hopper Bottoms (Item-129), these can be welded on the bottom parts of a bin to make it hopper bottom, (1) is 30" x 50" and 23" deep and has a 6" square discharge, the other one is 36" x 36" and 18" deep with a shutoff gate. Notes: Item Location: Trilla, IL 62469 Equipment Sold "AS IS, WHERE IS": All equipment/property is sold "AS IS, WHERE IS" with no warranty or guarantees, expressed or implied, No operational assessments or testing have been made by Del Peterson on this item, it has been photographed ONLY.



#130 - Atlas Wood Lathe (Item-130)

Atlas Wood Lathe (Item-130), Model 7122, unit is a four speed drive, 635 RPM, 1230 RPM, 2430 RPM, 4680 RPM, motor is 1.5HP, single phase, 115/230 volts, work bench is 32" high. Notes: Item Location: Trilla, IL 62469 Equipment Sold "AS IS, WHERE IS": All equipment/property is sold "AS IS, WHERE IS" with no warranty or guarantees, expressed or implied, No operational assessments or testing have been made by Del Peterson on this item, it has been photographed ONLY.



#131 - Plastic / Polypropylene Bags (Item-131)

Plastic / Polypropylene Bags (Item-131), for bird food, approx. 12,000 of the 10lb bags, 12" x 20", approx. 9,000 of the 10lb Sunflower seed bags, 12.25" x 22.75". Notes: Item Location: Trilla, IL 62469 Equipment Sold "AS IS, WHERE IS": All equipment/property is sold "AS IS, WHERE IS" with no warranty or guarantees, expressed or implied, No operational assessments or testing have been made by Del Peterson on this item, it has been photographed ONLY.



#132 - Plastic / Polypropylene Bags (Item-132)

Plastic / Polypropylene Bags (Item-132), 2 sizes for grass seed, approx. 66,000 lawn grass 7" x 11" seed bags, approx. 9,000 of the 3lb lawn grass 9.25" x 15" seed bags. Notes: Item Location: Trilla, IL 62469 Equipment Sold "AS IS, WHERE IS": All equipment/property is sold "AS IS, WHERE IS" with no warranty or guarantees, expressed or implied, No operational assessments or testing have been made by Del Peterson on this item, it has been photographed ONLY.



#133 - Gravity Flow Wagon Bed (Item-133)

Gravity Flow Wagon Bed (Item-133), this wagon was used as a surge bin above a seed cleaner, approx. 100-125 bushel capacity, wagon is 120" x 72" and 55" deep, wagon is 70" overall height and has a 12" channel stand under it, flat side is 24" and cone side is 60". Notes: Item Location: Trilla, IL 62469 Equipment Sold "AS IS, WHERE IS": All equipment/property is sold "AS IS, WHERE IS" with no warranty or guarantees, expressed or implied, No operational assessments or testing have been made by Del Peterson on this item, it has been photographed ONLY.



#134 - Food-Grade Stainless Steel Surge Bin (Item-134)

Food-Grade Stainless Steel Surge Bin (Item-134), with spiraling gentle let down ladders inside for your product, bin dimensions: 60" wide x 36" long x 42" tall, overall height is 84", outlet is 22" x 10", approx. capacity of 2,000lbs. Notes: Item Location: Trilla, IL 62469 Equipment Sold "AS IS, WHERE IS": All equipment/property is sold "AS IS, WHERE IS" with no warranty or guarantees, expressed or implied, No operational assessments or testing have been made by Del Peterson on this item, it has been photographed ONLY.



#135 - Large "V" Type Conveyor (Item-135)

Large "V" Type Conveyor (Item-135), 30' long, 24" belt, motor is 3HP, 1725 RPM, 208/230/440 volts, Dodge speed reducer, 24.71 ratio. Notes: Item Location: Trilla, IL 62469 Equipment Sold "AS IS, WHERE IS": All equipment/property is sold "AS IS, WHERE IS" with no warranty or guarantees, expressed or implied, No operational assessments or testing have been made by Del Peterson on this item, it has been photographed ONLY.



#136 - Adjustable Height Rolling Table (Item-136)

Adjustable Height Rolling Table (Item-136), 30" wide x 60" long, 28" minimum height and 42" maximum height, table also has adjustable incline. Notes: Item Location: Trilla, IL 62469 Equipment Sold "AS IS, WHERE IS": All equipment/property is sold "AS IS, WHERE IS" with no warranty or guarantees, expressed or implied, No operational assessments or testing have been made by Del Peterson on this item, it has been photographed ONLY.



#137 - Portec Corner Conveyor (Item-137)

Portec Corner Conveyor (Item-137), Model 22A25-90 DEG, 60" long, 24" belt, the Portec Belt curve has been specifically designed to provide trouble-free performance for many years in a variety of applications. [CLICK HERE FOR INFORMATION](#) Notes: Item Location: Trilla, IL 62469 Equipment Sold "AS IS, WHERE IS": All equipment/property is sold "AS IS, WHERE IS" with no warranty or guarantees, expressed or implied, No operational assessments or testing have been made by Del Peterson on this item, it has been photographed ONLY.



#138 - Portec Corner Conveyor (Item-138)

Portec Corner Conveyor (Item-138), Model 22A25-90 DEG, motor is 1HP, 230/460 volts, 3 phase, 60" long, 24" belt, the Portec Belt curve has been specifically designed to provide trouble-free performance for many years in a variety of applications. [CLICK HERE FOR INFORMATION](#) Notes: Item Location: Trilla, IL 62469 Equipment Sold "AS IS, WHERE IS": All equipment/property is sold "AS IS, WHERE IS" with no warranty or guarantees, expressed or implied, No operational assessments or testing have been made by Del Peterson on this item, it has been photographed ONLY.



#139 - Flat Belt Conveyor (Item-139)

Flat Belt Conveyor (Item-139), bag or box moving conveyor, 15' long x 18" wide belt, 1HP 3 phase, 220/440 volts, discharge height is 6'. Notes: Item Location: Trilla, IL 62469 Equipment Sold "AS IS, WHERE IS": All equipment/property is sold "AS IS, WHERE IS" with no warranty or guarantees, expressed or implied, No operational assessments or testing have been made by Del Peterson on this item, it has been photographed ONLY.



#140 - Universal Bucket Elevator Ladder (Item-140)

Universal Bucket Elevator Ladder (Item-140), 4 sections of ladder, 37' long x 16" wide, this was used on a Universal bucket elevator. Notes: Item Location: Trilla, IL 62469 Equipment Sold "AS IS, WHERE IS": All equipment/property is sold "AS IS, WHERE IS" with no warranty or guarantees, expressed or implied, No operational assessments or testing have been made by Del Peterson on this item, it has been photographed ONLY.



#141 - Universal Bucket Elevator Ladder (Item-141)

Universal Bucket Elevator Ladder (Item-141), 4 sections of ladder, 10', 8', 4', 7.5' x 16" wide, the other 3 sections are 9', 5' 5" x 16" wide, total length of 48.5', this was used on a Universal bucket elevator. Notes: Item Location: Trilla, IL 62469 Equipment Sold "AS IS, WHERE IS": All equipment/property is sold "AS IS, WHERE IS" with no warranty or guarantees, expressed or implied, No operational assessments or testing have been made by Del Peterson on this item, it has been photographed ONLY.



#142 - Food Grade Flexicon Flex Auger / Variable Speed Feeder (Item-142)

Food Grade Flexicon Flex Auger / Variable Speed Feeder (Item-142), variable speed drive, food grade stainless steel core with a poly tube for easy cleaning, 16' long 3" diameter 9' discharge height, 1.5HP 3 phase 208-230/460 volts, unit is on a wheel around stand that is 9' height, hopper is 8" x 16" and 10" deep, auger can be removed from stand for easy transport, unit has a VFD control so you can vary the speed of the auger to feed a machine or packaging line. Notes: Item Location: Trilla, IL 62469 Equipment Sold "AS IS, WHERE IS": All equipment/property is sold "AS IS, WHERE IS" with no warranty or guarantees, expressed or implied, No operational assessments or testing have been made by Del Peterson on this item, it has been photographed ONLY.



#143 - Food Grade Flexicon Flex Auger / Variable Speed Feeder (Item-143)

Food Grade Flexicon Flex Auger / Variable Speed Feeder (Item-143), variable speed drive, food grade stainless steel core with a poly tube for easy cleaning, 18' long 3" diameter 10' discharge height, 3/4HP DC motor, unit is on a 35 degree incline, unit is on a wheel around stand that is 9' height, hopper is 8" x 14" and 12" deep, auger can be removed from stand for easy transport, unit has a VFD control so you can vary the speed of the auger to feed a machine or packaging line. Notes: Item Location: Trilla, IL 62469 Equipment Sold "AS IS, WHERE IS": All equipment/property is sold "AS IS, WHERE IS" with no warranty or guarantees, expressed or implied, No operational assessments or testing have been made by Del Peterson on this item, it has been photographed ONLY.



#144 - 212 Carter Day Precision Sizers / Graders (Item-144)

212 Carter Day Precision Sizers / Graders (Item-144), the Carter Day Precision Grader / Sizer provides methods of sizing or separating various grains and other granular materials by thickness and by width with exactness and uniformity, they can size and separate seed corn, sunflower, barley, wheat, oats, rice, shelled peanuts, soybeans, seeds, and other free-flowing granular material, this comes complete with added optional vibratory conveyor, capacities range on what you are sizing, but should be around 100 BPH, motors are 3 phase 230/460 volts, this machine is very good condition. Notes: Item Location: Trilla, IL 62469 Equipment Sold "AS IS, WHERE IS": All equipment/property is sold "AS IS, WHERE IS" with no warranty or guarantees, expressed or implied, No operational assessments or testing have been made by Del Peterson on this item, it has been photographed ONLY.



#145 - 75HP John Deere 24" Chopper (Item-145)

75HP John Deere 24" Chopper (Item-145), from seed corn husking line, this is a 75HP power unit 230/460 volts 3 phase, unit was rebuilt in 2010, good serviceable unit in good condition, this unit was removed from a seed corn husking line. Notes: Item Location: Trilla, IL 62469 Equipment Sold "AS IS, WHERE IS": All equipment/property is sold "AS IS, WHERE IS" with no warranty or guarantees, expressed or implied, No operational assessments or testing have been made by Del Peterson on this item, it has been photographed ONLY.



#146 - 1,500 NEW Misprint Bags (Item-146)

1,500 NEW Misprint Bags (Item-146), 3 ply paper with anti-skid outer layer, 15" wide x 36" long with a 4" pleat, good heavy bag for holding feed or other grains. Notes: Item Location: Trilla, IL 62469 Equipment Sold "AS IS, WHERE IS": All equipment/property is sold "AS IS, WHERE IS" with no warranty or guarantees, expressed or implied, No operational assessments or testing have been made by Del Peterson on this item, it has been photographed ONLY.



#147 - 4 Core Spiral Separator (Item-147)

4 Core Spiral Separator (Item-147), this unit was built by Harden Mfg. and is a 4 core unit with 8 flight cores, unit has about 200 to 250 BPH, unit has been rebuilt, sandblasted and painted, the cores have 1' of stainless steel at the top of each core, this will increase the life of the core by 4 times the normal core, unit is in nice condition, the unit is 48" x 48" x 92" tall, inspection door is 34" x 20", unit weight is about 850lbs, this unit has the nice screw up feed adjusters, will remove corn from beans, vetch from wheat and anything round from non-round. Notes: Item Location: Trilla, IL 62469 Equipment Sold "AS IS, WHERE IS": All equipment/property is sold "AS IS, WHERE IS" with no warranty or guarantees, expressed or implied, No operational assessments or testing have been made by Del Peterson on this item, it has been photographed ONLY.



#148 - Pallet Racking (Item-148)

Pallet Racking (Item-148), the uprights are 8' tall and the cross members are 9' long and its 4' deep, 5,000lb capacity. Notes: Item Location: Trilla, IL 62469 Equipment Sold "AS IS, WHERE IS": All equipment/property is sold "AS IS, WHERE IS" with no warranty or guarantees, expressed or implied, No operational assessments or testing have been made by Del Peterson on this item, it has been photographed ONLY.



#149 - Stainless Steel Food Grade Shaker Grader Conveyor (Item-149)

Stainless Steel Food Grade Shaker Grader Conveyor (Item-149), with screen, this is a vibratory conveyor with screen for scalping or sifting, unit has washable motor for being able to wash the unit down, the measurements are 8' long x 24" wide, height of the unit is 60", unit was built by CMI equipment, Model CSH-S, screen size is 12/64 slotted and 10/64 slotted. CLICK HERE FOR MORE INFORMATION Notes: Item Location: Trilla, IL 62469 Equipment Sold "AS IS, WHERE IS": All equipment/property is sold "AS IS, WHERE IS" with no warranty or guarantees, expressed or implied, No operational assessments or testing have been made by Del Peterson on this item, it has been photographed ONLY.



#150 - 40HP 3 Phase Motor (Item-150)

40HP 3 Phase Motor (Item-150), 230/460 volts, 1725 RPM. Notes: Item Location: Trilla, IL 62469 Equipment Sold "AS IS, WHERE IS": All equipment/property is sold "AS IS, WHERE IS" with no warranty or guarantees, expressed or implied, No operational assessments or testing have been made by Del Peterson on this item, it has been photographed ONLY.



#151 - 40HP 3 Phase Motor (Item-151)

40HP 3 Phase Motor (Item-151), 230/460 volts, 1725 RPM. Notes: Item Location: Trilla, IL 62469 Equipment Sold "AS IS, WHERE IS": All equipment/property is sold "AS IS, WHERE IS" with no warranty or guarantees, expressed or implied, No operational assessments or testing have been made by Del Peterson on this item, it has been photographed ONLY.



#152 - 40HP 3 Phase Motor (Item-152)

40HP 3 Phase Motor (Item-152), 230/460 volts, 1775 RPM, the motor is missing wire cover. Notes: Item Location: Trilla, IL 62469 Equipment Sold "AS IS, WHERE IS": All equipment/property is sold "AS IS, WHERE IS" with no warranty or guarantees, expressed or implied, No operational assessments or testing have been made by Del Peterson on this item, it has been photographed ONLY.



#153 - 40HP 3 Phase Motor (Item-153)

40HP 3 Phase Motor (Item-153), 230/460 volts, 1780 RPM. Notes: Item Location: Trilla, IL 62469 Equipment Sold "AS IS, WHERE IS": All equipment/property is sold "AS IS, WHERE IS" with no warranty or guarantees, expressed or implied, No operational assessments or testing have been made by Del Peterson on this item, it has been photographed ONLY.



#154 - Pallet Racking (Item-154)

Pallet Racking (Item-154), (22) cross members 8' long, (6) uprights 10' tall and 40" deep, 5,000lb capacity. Notes: Item Location: Trilla, IL 62469 Equipment Sold "AS IS, WHERE IS": All equipment/property is sold "AS IS, WHERE IS" with no warranty or guarantees, expressed or implied, No operational assessments or testing have been made by Del Peterson on this item, it has been photographed ONLY.



#155 - Steel Storage Cabinet (Item-155)

Steel Storage Cabinet (Item-155), 36" wide, 72" tall, 18" deep. Notes: Item Location: Trilla, IL 62469 Equipment Sold "AS IS, WHERE IS": All equipment/property is sold "AS IS, WHERE IS" with no warranty or guarantees, expressed or implied, No operational assessments or testing have been made by Del Peterson on this item, it has been photographed ONLY.



#156 - Steel Storage Cabinet (Item-156)

Steel Storage Cabinet (Item-156), 36" wide, 72" tall, 18" deep. Notes: Item Location: Trilla, IL 62469 Equipment Sold "AS IS, WHERE IS": All equipment/property is sold "AS IS, WHERE IS" with no warranty or guarantees, expressed or implied, No operational assessments or testing have been made by Del Peterson on this item, it has been photographed ONLY.



#157 - NEW Single Core Open Spiral (Item-157)

NEW Single Core Open Spiral (Item-157), this unit is still in its shipping crate, capacity 50 BPH, will remove vetch from wheat or rye. [CLICK HERE FOR MORE INFORMATION](#) Notes: Item Location: Trilla, IL 62469 Equipment Sold "AS IS, WHERE IS": All equipment/property is sold "AS IS, WHERE IS" with no warranty or guarantees, expressed or implied, No operational assessments or testing have been made by Del Peterson on this item, it has been photographed ONLY.



#158 - NEW Single Core Open Spiral (Item-158)

NEW Single Core Open Spiral (Item-158), this unit is still in its shipping crate, capacity 50 BPH, will remove vetch from wheat or rye. [CLICK HERE FOR MORE INFORMATION](#) Notes: Item Location: Trilla, IL 62469 Equipment Sold "AS IS, WHERE IS": All equipment/property is sold "AS IS, WHERE IS" with no warranty or guarantees, expressed or implied, No operational assessments or testing have been made by Del Peterson on this item, it has been photographed ONLY.



#159 - 4" Variable Speed Auger Feeder (Item-159)

4" Variable Speed Auger Feeder (Item-159), unit is 60" long, 220 volts, 1/4HP and is variable speed, tank measures 18" round and 24" deep, unit was used to put dry seed treatment in to a treater drum, will work to feed other machines. Notes: Item Location: Trilla, IL 62469 Equipment Sold "AS IS, WHERE IS": All equipment/property is sold "AS IS, WHERE IS" with no warranty or guarantees, expressed or implied, No operational assessments or testing have been made by Del Peterson on this item, it has been photographed ONLY.



#160 - SMC Drag Conveyor (Item-160)

SMC Drag Conveyor (Item-160), 15' with 20 degree incline section, this drag is in good condition and is set at 750 BPH, it can be sped up to a higher capacity, motor is 208/230-460 volts, 5HP, it has a Dodge speed reducer, the length is 15' long, with 20 degree incline section it will make the drive head approx. 36" off the ground, 9" wide poly paddles. Notes: Item Location: Trilla, IL 62469 Equipment Sold "AS IS, WHERE IS": All equipment/property is sold "AS IS, WHERE IS" with no warranty or guarantees, expressed or implied, No operational assessments or testing have been made by Del Peterson on this item, it has been photographed ONLY.



#161 - GSI 30' Drag Conveyor (Item-161)

GSI 30' Drag Conveyor (Item-161), conveyor is in good condition and is set at 750 BPH, it can be sped up to a higher capacity, motor is 230/460 volts and 3HP, it has a Dodge speed reducer, the length is 30' long, paddles are 9". Notes: Item Location: Trilla, IL 62469 Equipment Sold "AS IS, WHERE IS": All equipment/property is sold "AS IS, WHERE IS" with no warranty or guarantees, expressed or implied, No operational assessments or testing have been made by Del Peterson on this item, it has been photographed ONLY.



#162 - GSI 15' Drag Conveyor (Item-162)

GSI 15' Drag Conveyor (Item-162), it is in good condition and is set at 750 BPH it can also be sped up to a higher capacity, motor is 230/460 volts and 1.5HP, it has a Dodge speed reducer, the length is 15' long, paddles are 9". Notes: Item Location: Trilla, IL 62469 Equipment Sold "AS IS, WHERE IS": All equipment/property is sold "AS IS, WHERE IS" with no warranty or guarantees, expressed or implied, No operational assessments or testing have been made by Del Peterson on this item, it has been photographed ONLY.



#163 - John Deere 3970 Chopper (Item-163)

John Deere 3970 Chopper (Item-163), 100HP from seed corn husking line, this is a 100HP power unit, 230/460 volts, 3 phase and can be 75HP at 190/380 volts, Model 3970JDP0107, unit is in good condition, it was removed from a seed corn husking line. Notes: Item Location: Trilla, IL 62469 Equipment Sold "AS IS, WHERE IS": All equipment/property is sold "AS IS, WHERE IS" with no warranty or guarantees, expressed or implied, No operational assessments or testing have been made by Del Peterson on this item, it has been photographed ONLY.



#164 - 1VT Carter Day Precision Sizers / Graders (Item-164)

1VT Carter Day Precision Sizers / Graders (Item-164), the Carter Day Precision Grader / Sizer provides methods of sizing or separating various grains and other granular materials by thickness and by width with exactness and uniformity, they can size and separate seed corn, sunflower, barley, wheat, oats, rice, shelled peanuts, soybeans, seeds, and other free-flowing granular material, this comes complete with added optional vibratory conveyor, capacities range on what you are sizing, but should be around 50 BPH, motor is 3 phase 230/460 volts, 3/4HP, this machine is in very good condition, overall height is 60", style number is ACA2-X, unit is mounted on a 24" stand. It has been updated to the square shaft quick change system. Notes: Item Location: Trilla, IL 62469 Equipment Sold "AS IS, WHERE IS": All equipment/property is sold "AS IS, WHERE IS" with no warranty or guarantees, expressed or implied, No operational assessments or testing have been made by Del Peterson on this item, it has been photographed ONLY.



#165 - 412 Carter Day Precision Sizers / Graders (Item-165)

412 Carter Day Precision Sizers / Graders (Item-165), the Carter Day Precision Grader / Sizer provides methods of sizing or separating various grains and other granular materials by thickness and by width with exactness and uniformity, they can size and separate seed corn, sunflower, barley, wheat, oats, rice, shelled peanuts, soybeans, seeds, and other free-flowing granular material, this comes complete with added optional vibratory conveyor, capacities range on what you are sizing, but should be around 200 BPH, motors are 3 phase 230/460 volts this machine is very good condition, it has been updated to the square shaft quick change system. Notes: Item Location: Trilla, IL 62469 Equipment Sold "AS IS, WHERE IS": All equipment/property is sold "AS IS, WHERE IS" with no warranty or guarantees, expressed or implied, No operational assessments or testing have been made by Del Peterson on this item, it has been photographed ONLY.



#166 - SMC Side Wall Return (Item-166)

SMC Side Wall Return (Item-166), 30' drag conveyor with incline section, this drag is in good condition and is set at 750 BPH, it can also be sped up to a higher capacity, motor is 208-230/460 volts, 5HP, it has a Dodge speed reducer, the length is 30' long, with incline section it will make the drive head up and off the ground to feed a leg or other machinery, this drag was used to remove grain from a seed cleaner, 9" wide poly paddles. [CLICK HERE FOR MORE INFORMATION](#) Notes: Item Location: Trilla, IL 62469 Equipment Sold "AS IS, WHERE IS": All equipment/property is sold "AS IS, WHERE IS" with no warranty or guarantees, expressed or implied, No operational assessments or testing have been made by Del Peterson on this item, it has been photographed ONLY.



#167 - 40HP 3 Phase Motor (Item-167)

40HP 3 Phase Motor (Item-167), 230/460 volts, 1765 RPM. Notes: Item Location: Trilla, IL 62469 Equipment Sold "AS IS, WHERE IS": All equipment/property is sold "AS IS, WHERE IS" with no warranty or guarantees, expressed or implied, No operational assessments or testing have been made by Del Peterson on this item, it has been photographed ONLY.



#168 - 40HP 3 Phase Motor (Item-168)

40HP 3 Phase Motor (Item-168), 230/460 volts, 1765 RPM. Notes: Item Location: Trilla, IL 62469 Equipment Sold "AS IS, WHERE IS": All equipment/property is sold "AS IS, WHERE IS" with no warranty or guarantees, expressed or implied, No operational assessments or testing have been made by Del Peterson on this item, it has been photographed ONLY.



#169 - 15HP 3 Phase Motor (Item-169)

15HP 3 Phase Motor (Item-169), 230/460 volts, 1755 RPM. Notes: Item Location: Trilla, IL 62469 Equipment Sold "AS IS, WHERE IS": All equipment/property is sold "AS IS, WHERE IS" with no warranty or guarantees, expressed or implied, No operational assessments or testing have been made by Del Peterson on this item, it has been photographed ONLY.



#170 - 15HP 3 Phase Motor (Item-170)

15HP 3 Phase Motor (Item-170), 230/460 volts, 1755 RPM. Notes: Item Location: Trilla, IL 62469 Equipment Sold "AS IS, WHERE IS": All equipment/property is sold "AS IS, WHERE IS" with no warranty or guarantees, expressed or implied, No operational assessments or testing have been made by Del Peterson on this item, it has been photographed ONLY.



#171 - 15HP 3 Phase Motor (Item-171)

15HP 3 Phase Motor (Item-171), 230/460 volts, 1755 RPM. Notes: Item Location: Trilla, IL 62469 Equipment Sold "AS IS, WHERE IS": All equipment/property is sold "AS IS, WHERE IS" with no warranty or guarantees, expressed or implied, No operational assessments or testing have been made by Del Peterson on this item, it has been photographed ONLY.



#172 - 15HP 3 Phase Motor (Item-172)

15HP 3 Phase Motor (Item-172), 230/460 volts, 1755 RPM. Notes: Item Location: Trilla, IL 62469 Equipment Sold "AS IS, WHERE IS": All equipment/property is sold "AS IS, WHERE IS" with no warranty or guarantees, expressed or implied, No operational assessments or testing have been made by Del Peterson on this item, it has been photographed ONLY.



#173 - 1VT Carter Day Precision Sizers / Graders (Item-173)

1VT Carter Day Precision Sizers / Graders (Item-173), the Carter Day Precision Grader / Sizer provides methods of sizing or separating various grains and other granular materials by thickness and by width with exactness and uniformity, they can size and separate seed corn, sunflower, barley, wheat, oats, rice, shelled peanuts, soybeans, seeds, and other free-flowing granular material, this comes complete with added optional vibratory conveyor, capacities range on what you are sizing, but should be around 50 BPH, motor is 3 phase 230/460 volts 3/4HP, this machine is in very good condition, overall height is 30, style number is ACA2-X, unit is mounted on a 24" stand, it has been updated to the square shaft quick change system. Notes: Item Location: Trilla, IL 62469 Equipment Sold "AS IS, WHERE IS": All equipment/property is sold "AS IS, WHERE IS" with no warranty or guarantees, expressed or implied, No operational assessments or testing have been made by Del Peterson on this item, it has been photographed ONLY.



#174 - Carter Day / Superior Fractionating Aspirator (Item-174)

Carter Day / Superior Fractionating Aspirator (Item-174), 48" wide, motor is 5HP, 220/440 volts, 3 phase. [CLICK HERE FOR VIDEO](#) Notes: Item Location: Trilla, IL 62469 Equipment Sold "AS IS, WHERE IS": All equipment/property is sold "AS IS, WHERE IS" with no warranty or guarantees, expressed or implied, No operational assessments or testing have been made by Del Peterson on this item, it has been photographed ONLY.



#175 - Westrup FP 1500-XS Precision Seed Cleaner (Item-175)

Westrup FP 1500-XS Precision Seed Cleaner (Item-175), Westrup is well known for its high quality seed cleaners, this is the larger FP 1500 unit and has a capacity of up to 900 BPH precision cleaning, screens are kept clean by rubber balls, this unit has many flow configurations and comes with a large assortment of screens, it has screens for corn and beans and the scalp screens for wheat, the motors on this unit are all hazardous duty location motors, this unit needs 4 minor repairs that are talked about in the video, the FP high capacity modular cleaner is a very versatile cleaner performing at high capacities, Model FP-1500, it excels at precision cleaning of all varieties of seed and grain as well as pre-cleaning and sizing when very high efficiency standards are required. [CLICK HERE FOR MORE INFORMATION](#) [CLICK HERE FOR VIDEO](#) Notes: Item Location: Trilla, IL 62469 Equipment Sold "AS IS, WHERE IS": All equipment/property is sold "AS IS, WHERE IS" with no warranty or guarantees, expressed or implied, No operational assessments or testing have been made by Del Peterson on this item, it has been photographed ONLY.



#176 - Universal Leak Proof K-Valve (Item-176)

Universal Leak Proof K-Valve (Item-176), 10" x 10" two-way leak proof K-Valve. Notes: Item Location: Trilla, IL 62469 Equipment Sold "AS IS, WHERE IS": All equipment/property is sold "AS IS, WHERE IS" with no warranty or guarantees, expressed or implied, No operational assessments or testing have been made by Del Peterson on this item, it has been photographed ONLY.



#177 - Universal Leak Proof K-Valve (Item-177)

Universal Leak Proof K-Valve (Item-177), 10" x 10" two-way leak proof K-Valve. Notes: Item Location: Trilla, IL 62469 Equipment Sold "AS IS, WHERE IS": All equipment/property is sold "AS IS, WHERE IS" with no warranty or guarantees, expressed or implied, No operational assessments or testing have been made by Del Peterson on this item, it has been photographed ONLY.



#178 - Gustafson S600 Seed Treater (Item-178)

Gustafson S600 Seed Treater (Item-178), with 50 gallon stainless steel mix tank, both seed treater and mixing tank are stainless steel, treater has 2HP 3 phase, 208-230/460 volt electric motor, the coating chamber is variable speed, the mix tank has (2) 1/3HP, 208-230/460 volt electric motors, unit has been cleaned and inspected, and all new belts have been installed, it is in good serviceable condition, unit comes with a stand that is 18" x 84" x 37" high. Notes: Item Location: Trilla, IL 62469 Equipment Sold "AS IS, WHERE IS": All equipment/property is sold "AS IS, WHERE IS" with no warranty or guarantees, expressed or implied, No operational assessments or testing have been made by Del Peterson on this item, it has been photographed ONLY.



#179 - Industrial Kinetics Powered Pallet Moving Conveyor (Item-179)

Industrial Kinetics Powered Pallet Moving Conveyor (Item-179), 48" W x 18' L, adjustable width on conveyor's end, unit is equipped with electronic eye to sense pallet placement, 3/4HP 3 phase, 208-230/460 volts. Notes: Item Location: Trilla, IL 62469 Equipment Sold "AS IS, WHERE IS": All equipment/property is sold "AS IS, WHERE IS" with no warranty or guarantees, expressed or implied, No operational assessments or testing have been made by Del Peterson on this item, it has been photographed ONLY.



#180 - Industrial Kinetics Powered Pallet Moving Conveyor (Item-180)

Industrial Kinetics Powered Pallet Moving Conveyor (Item-180), 48" W x 18' L, adjustable width on conveyor's end, unit is equipped with electronic eye to sense pallet placement, 3/4HP 3 phase, 208-230/460 volts. Notes: Item Location: Trilla, IL 62469 Equipment Sold "AS IS, WHERE IS": All equipment/property is sold "AS IS, WHERE IS" with no warranty or guarantees, expressed or implied, No operational assessments or testing have been made by Del Peterson on this item, it has been photographed ONLY.



#181 - Chantland Swivel Bag Mowing Conveyor (Item-181)

Chantland Swivel Bag Mowing Conveyor (Item-181), designed to convey filled bags from the bag closing line to the manual palletizing station, Model SS, unit has 5HP 3 phase, 208-230/460 volt, Baldor motor, 20" wide belt, 21' overall length, unit has its own hydraulic system with variable speed control valves to control belt speed and hydraulic cylinder to raise and lower the shorter conveyor, see attached literature for more information. Notes: Item Location: Trilla, IL 62469 Equipment Sold "AS IS, WHERE IS": All equipment/property is sold "AS IS, WHERE IS" with no warranty or guarantees, expressed or implied, No operational assessments or testing have been made by Del Peterson on this item, it has been photographed ONLY.



#182 - Stacking Corral for Chantland Swivel Stack System (Item-182)

Stacking Corral for Chantland Swivel Stack System (Item-182), 44" W x 58" L x 48" D. Notes: Item Location: Trilla, IL 62469 Equipment Sold "AS IS, WHERE IS": All equipment/property is sold "AS IS, WHERE IS" with no warranty or guarantees, expressed or implied, No operational assessments or testing have been made by Del Peterson on this item, it has been photographed ONLY.



#183 - Crippen Model BC-2415SB Conveyor (Item-183)

Crippen Model BC-2415SB Conveyor (Item-183), 3HP, 208-230/460 motor, bi-directional discharge, conveyor is 16' length with 24" belt. Notes: Item Location: Trilla, IL 62469 Equipment Sold "AS IS, WHERE IS": All equipment/property is sold "AS IS, WHERE IS" with no warranty or guarantees, expressed or implied, No operational assessments or testing have been made by Del Peterson on this item, it has been photographed ONLY.



#184 - Agra Construction Conveyor (Item-184)

Agra Construction Conveyor (Item-184), Model 24PIP0107, 24" W x 18" L, smooth belt, 2HP, 208-230/460 volts. Notes: Item Location: Trilla, IL 62469 Equipment Sold "AS IS, WHERE IS": All equipment/property is sold "AS IS, WHERE IS" with no warranty or guarantees, expressed or implied, No operational assessments or testing have been made by Del Peterson on this item, it has been photographed ONLY.



#185 - Stainless Steel Food Grade Mixing, Soaking & Dumping Line (Item-185)

Stainless Steel Food Grade Mixing, Soaking & Dumping Line (Item-185), this was previously used for mixing and soaking grains, the dumping station can be used for both soaking & mixing drums, system is powered by small 3 phase, 208-230/460 volt motor, 2 tanks are for mixing; these were used for adding seasoning and flavoring to product before entering roasting line, (4) stainless steel soaking tanks are each 38" diameter and 48" deep. On soaking tanks, there is black PVC drain pipe and all tubs on wheels, this system could also be used in the malting and hemp industry. [CLICK HERE FOR VIDEO](#) Notes: Item Location: Trilla, IL 62469 Equipment Sold "AS IS, WHERE IS": All equipment/property is sold "AS IS, WHERE IS" with no warranty or guarantees, expressed or implied, No operational assessments or testing have been made by Del Peterson on this item, it has been photographed ONLY.



#186 - Stainless Steel Food Grade Roasting Line (Item-186)

Stainless Steel Food Grade Roasting Line (Item-186), unit powered by a 208-230/460 volt, 3 phase motor, unit was previously used for roasting grain, a boiler (listed separately) heats water for a heated and recycled oil bath, both stainless steel chain conveyors drain the product while the attached plenum with ductwork pulls the moist air away, can be changed over for air drying line and also repurposed for other operations, forklift in pictures DOES NOT SELL with this lot. [CLICK HERE FOR VIDEO](#) Notes: Item Location: Trilla, IL 62469 Equipment Sold "AS IS, WHERE IS": All equipment/property is sold "AS IS, WHERE IS" with no warranty or guarantees, expressed or implied, No operational assessments or testing have been made by Del Peterson on this item, it has been photographed ONLY.



#187 - Ribbon For Mixer (Item-187)

Ribbon For Mixer (Item-187), ribbon is 12' long with a diameter of 4' 6", shaft on side with bearing is 4 15/16", shaft on other side is 3 7/16", overall length is 15' 6". Notes: Item Location: Trilla, IL 62469 Equipment Sold "AS IS, WHERE IS": All equipment/property is sold "AS IS, WHERE IS" with no warranty or guarantees, expressed or implied, No operational assessments or testing have been made by Del Peterson on this item, it has been photographed ONLY.



#188 - Stainless Steel Food Grade Conveyor (Item-188)

Stainless Steel Food Grade Conveyor (Item-188), with food grade belt, unit is 4' 6" H and 10' L, belt is 16" wide, unit DOES NOT come with a motor. Notes: Item Location: Trilla, IL 62469 Equipment Sold "AS IS, WHERE IS": All equipment/property is sold "AS IS, WHERE IS" with no warranty or guarantees, expressed or implied, No operational assessments or testing have been made by Del Peterson on this item, it has been photographed ONLY.



#189 - Cleated Belt Conveyor w/ Cover (Item-189)

Cleated Belt Conveyor w/ Cover (Item-189), 18' L x 12" W, 1HP 3 phase, 208-230/460 volts, Baldor motor, cover is removable. Notes: Item Location: Trilla, IL 62469 Equipment Sold "AS IS, WHERE IS": All equipment/property is sold "AS IS, WHERE IS" with no warranty or guarantees, expressed or implied, No operational assessments or testing have been made by Del Peterson on this item, it has been photographed ONLY.



#190 - Stainless Steel Food Grade Screw Conveyor (Item-190)

Stainless Steel Food Grade Screw Conveyor (Item-190), 5' W x 7' L, Dayton wash down 1.5HP, 208-230/460 volt motor. Notes: Item Location: Trilla, IL 62469 Equipment Sold "AS IS, WHERE IS": All equipment/property is sold "AS IS, WHERE IS" with no warranty or guarantees, expressed or implied, No operational assessments or testing have been made by Del Peterson on this item, it has been photographed ONLY.



#191 - Leak Proof 2-Way K-Valve (Item-191)

Leak Proof 2-Way K-Valve (Item-191), 18" x 18", you can later purchase square-to-rounds to accommodate your application. Notes: Item Location: Trilla, IL 62469 Equipment Sold "AS IS, WHERE IS": All equipment/property is sold "AS IS, WHERE IS" with no warranty or guarantees, expressed or implied, No operational assessments or testing have been made by Del Peterson on this item, it has been photographed ONLY.



#192 - Carter Day 612 Precision Sizer / Grader (Item-192)

Carter Day 612 Precision Sizer / Grader (Item-192), Style ZM3-X, 1.5HP 3 phase, 208-230/440 volts, NO drums in the machine, drums can be purchased from Commodity Traders International or Carter Day, unit is in good serviceable condition. Notes: Item Location: Trilla, IL 62469 Equipment Sold "AS IS, WHERE IS": All equipment/property is sold "AS IS, WHERE IS" with no warranty or guarantees, expressed or implied, No operational assessments or testing have been made by Del Peterson on this item, it has been photographed ONLY.



#193 - Dayton Dust Control Non-Overload Fan (Item-193)

Dayton Dust Control Non-Overload Fan (Item-193), 19.5" inlet and 19.5" x 14" outlet, 208-230/440 volt, 3HP, 3 phase, unit is belt driven. Notes: Item Location: Trilla, IL 62469 Equipment Sold "AS IS, WHERE IS": All equipment/property is sold "AS IS, WHERE IS" with no warranty or guarantees, expressed or implied, No operational assessments or testing have been made by Del Peterson on this item, it has been photographed ONLY.



#194 - Cleland 2 Core Open Spiral Separator (Item-194)

Cleland 2 Core Open Spiral Separator (Item-194), this machine provides a quite successful method for separating splits, weed seed or corn from soybean, separator has 10 separating inner flights, requires no power and operates by gravity, unit will also separate hairy vetch from rye and wheat. Notes: Item Location: Trilla, IL 62469 Equipment Sold "AS IS, WHERE IS": All equipment/property is sold "AS IS, WHERE IS" with no warranty or guarantees, expressed or implied, No operational assessments or testing have been made by Del Peterson on this item, it has been photographed ONLY.



#195 - (2) Totally Enclosed Gentle Handling Bean Let-Down Ladders (Item-195)

(2) Totally Enclosed Gentle Handling Bean Let-Down Ladders (Item-195), (1) ladder is 2' long, (1) ladder is 4' 6" long, 4" inlet and outlet. Notes: Item Location: Trilla, IL 62469 Equipment Sold "AS IS, WHERE IS": All equipment/property is sold "AS IS, WHERE IS" with no warranty or guarantees, expressed or implied, No operational assessments or testing have been made by Del Peterson on this item, it has been photographed ONLY.



#196 - 1,500 3-Ply Paper Bags (Item-196)

1,500 3-Ply Paper Bags (Item-196), 15" x 36", pleat is 4". Notes: Item Location: Trilla, IL 62469 Equipment Sold "AS IS, WHERE IS": All equipment/property is sold "AS IS, WHERE IS" with no warranty or guarantees, expressed or implied, No operational assessments or testing have been made by Del Peterson on this item, it has been photographed ONLY.



#197 - 1,500 3-Ply Paper Bags (Item-197)

1,500 3-Ply Paper Bags (Item-197), 15" x 36", pleat is 4". Notes: Item Location: Trilla, IL 62469 Equipment Sold "AS IS, WHERE IS": All equipment/property is sold "AS IS, WHERE IS" with no warranty or guarantees, expressed or implied, No operational assessments or testing have been made by Del Peterson on this item, it has been photographed ONLY.



#198 - 1,500 3-Ply Paper Bags (Item-198)

1,500 3-Ply Paper Bags (Item-198), 15" x 36", pleat is 4". Notes: Item Location: Trilla, IL 62469 Equipment Sold "AS IS, WHERE IS": All equipment/property is sold "AS IS, WHERE IS" with no warranty or guarantees, expressed or implied, No operational assessments or testing have been made by Del Peterson on this item, it has been photographed ONLY.



#199 - 1,500 3-Ply Paper Bags (Item-199)

1,500 3-Ply Paper Bags (Item-199), 15" x 36", pleat is 4". Notes: Item Location: Trilla, IL 62469 Equipment Sold "AS IS, WHERE IS": All equipment/property is sold "AS IS, WHERE IS" with no warranty or guarantees, expressed or implied, No operational assessments or testing have been made by Del Peterson on this item, it has been photographed ONLY.



#200 - (4) Precision Sizer / Grader Shells (Item-200)

(4) Precision Sizer / Grader Shells (Item-200), shells are size 16 round, these would fit in 212, 412, 612 and 1VT precision sizers / graders. Notes: Item Location: Trilla, IL 62469 Equipment Sold "AS IS, WHERE IS": All equipment/property is sold "AS IS, WHERE IS" with no warranty or guarantees, expressed or implied, No operational assessments or testing have been made by Del Peterson on this item, it has been photographed ONLY.



#201 - (4) Precision Sizer / Grader Shells (Item-201)

(4) Precision Sizer / Grader Shells (Item-201), shells are size 12.5 x 3/4 slot, these would fit in 212, 412, 612 and 1VT precision sizers / graders. Notes: Item Location: Trilla, IL 62469 Equipment Sold "AS IS, WHERE IS": All equipment/property is sold "AS IS, WHERE IS" with no warranty or guarantees, expressed or implied, No operational assessments or testing have been made by Del Peterson on this item, it has been photographed ONLY.



#202 - 4-Way Distributor / Valve (Item-202)

4-Way Distributor / Valve (Item-202), like new, never used, 8 x 8, leak proof. Notes: Item Location: Trilla, IL 62469 Equipment Sold "AS IS, WHERE IS": All equipment/property is sold "AS IS, WHERE IS" with no warranty or guarantees, expressed or implied, No operational assessments or testing have been made by Del Peterson on this item, it has been photographed ONLY.



#203 - Roach Manufacturing Conveyor (Item-203)

Roach Manufacturing Conveyor (Item-203), 24" width crescent top belt, 22' length, NO motor. Notes: Item Location: Trilla, IL 62469 Equipment Sold "AS IS, WHERE IS": All equipment/property is sold "AS IS, WHERE IS" with no warranty or guarantees, expressed or implied, No operational assessments or testing have been made by Del Peterson on this item, it has been photographed ONLY.



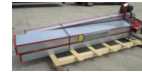
#204 - Stairs for Platform (Item-204)

Stairs for Platform (Item-204), 6' height x 24" width. Notes: Item Location: Trilla, IL 62469 Equipment Sold "AS IS, WHERE IS": All equipment/property is sold "AS IS, WHERE IS" with no warranty or guarantees, expressed or implied, No operational assessments or testing have been made by Del Peterson on this item, it has been photographed ONLY.



#205 - Hance Model 85S Bucket Elevator (Item-205)

Hance Model 85S Bucket Elevator (Item-205), 30' overall height, approx. 28' discharge height, approx. 80 BPH, unit has been checked over and comes with NEW belt and cups, also comes with NEW 3/4HP single phase 110/220 volt motor. Notes: Item Location: Trilla, IL 62469 Equipment Sold "AS IS, WHERE IS": All equipment/property is sold "AS IS, WHERE IS" with no warranty or guarantees, expressed or implied, No operational assessments or testing have been made by Del Peterson on this item, it has been photographed ONLY.



#206 - (2) Squirrel Cage Fans (Item-206)

(2) Squirrel Cage Fans (Item-206), 20" inlet on both sides and outlet is 31" x 31", unit has 1 11/16" shaft and a 19", 5 groove, B section pulley, fans are 26" wide. Notes: Item Location: Trilla, IL 62469 Equipment Sold "AS IS, WHERE IS": All equipment/property is sold "AS IS, WHERE IS" with no warranty or guarantees, expressed or implied, No operational assessments or testing have been made by Del Peterson on this item, it has been photographed ONLY.



#207 - (2) Squirrel Cage Fans (Item-207)

(2) Squirrel Cage Fans (Item-207), 20" inlet on both sides and outlet is 31" x 31", unit has 1 11/16" shaft and a 16", 4 groove, B section pulley, fans are 26" wide. Notes: Item Location: Trilla, IL 62469 Equipment Sold "AS IS, WHERE IS": All equipment/property is sold "AS IS, WHERE IS" with no warranty or guarantees, expressed or implied, No operational assessments or testing have been made by Del Peterson on this item, it has been photographed ONLY.



#208 - (2) Squirrel Cage Fans (Item-208)

(2) Squirrel Cage Fans (Item-208), 20" inlet on both sides and outlet is 31" x 31", unit has 1 11/16" shaft and a 16", 4 groove, B section pulley, fans are 26" wide. Notes: Item Location: Trilla, IL 62469 Equipment Sold "AS IS, WHERE IS": All equipment/property is sold "AS IS, WHERE IS" with no warranty or guarantees, expressed or implied, No operational assessments or testing have been made by Del Peterson on this item, it has been photographed ONLY.



#209 - Stainless Steel Cyclone (Item-209)

Stainless Steel Cyclone (Item-209), for dust and small particle collection, 8" inlet and outlet, 3' diameter, cyclone is 10' long, 12" bottom discharge w/ sliding gate, frame is 10' 6" high and 5' x 5'. Notes: Item Location: Trilla, IL 62469 Equipment Sold "AS IS, WHERE IS": All equipment/property is sold "AS IS, WHERE IS" with no warranty or guarantees, expressed or implied, No operational assessments or testing have been made by Del Peterson on this item, it has been photographed ONLY.



#210 - Approx. 1,000 Feet of Flat Belting (Item-210)

Approx. 1,000 Feet of Flat Belting (Item-210), 23" wide. Notes: Item Location: Trilla, IL 62469 Equipment Sold "AS IS, WHERE IS": All equipment/property is sold "AS IS, WHERE IS" with no warranty or guarantees, expressed or implied, No operational assessments or testing have been made by Del Peterson on this item, it has been photographed ONLY.



#211 - Dayton Blower Fan (Item-211)

Dayton Blower Fan (Item-211), 8" inlet and outlet, 3.5HP, 230/460 volts. Notes: Item Location: Trilla, IL 62469 Equipment Sold "AS IS, WHERE IS": All equipment/property is sold "AS IS, WHERE IS" with no warranty or guarantees, expressed or implied, No operational assessments or testing have been made by Del Peterson on this item, it has been photographed ONLY.



#212 - Roskamp 6 1/2 Series - 2 Pair High Roller Mill (Item-212)

Roskamp 6 1/2 Series - 2 Pair High Roller Mill (Item-212), unit has 6 1/2" in diameter x 9" wide rolls, it has 6 straight grooves per inch on the top set of rolls and 12 straight grooves per inch on the bottom set of rolls, Roller Mill has 7.5HP, single phase, 230 volt motor, unit conveys processed material out of the side with a 5" side discharge auger. Notes: Item Location: Trilla, IL 62469 Equipment Sold "AS IS, WHERE IS": All equipment/property is sold "AS IS, WHERE IS" with no warranty or guarantees, expressed or implied, No operational assessments or testing have been made by Del Peterson on this item, it has been photographed ONLY.



#213 - Clipper Vibratory Shaker Conveyor (Item-213)

Clipper Vibratory Shaker Conveyor (Item-213), with a 1HP 3 phase, 208-230/460 volt motor, through is 120" long, 12" wide, 5" deep at front end, and 12" deep at discharge end. Notes: Item Location: Trilla, IL 62469 Equipment Sold "AS IS, WHERE IS": All equipment/property is sold "AS IS, WHERE IS" with no warranty or guarantees, expressed or implied, No operational assessments or testing have been made by Del Peterson on this item, it has been photographed ONLY.



#214 - Hance Model 900 GH Bucket Elevator (Item-214)

Hance Model 900 GH Bucket Elevator (Item-214), overall height is 33' 9", discharge height is 29' 10", 3HP 230/460 volts, discharge spout is 8" round, new belt and cups will be provided, cups are 7" x 5", unit is set to run approx. 900 BPH but could be sped up to 1,300 BPH. Notes: Item Location: Trilla, IL 62469 Equipment Sold "AS IS, WHERE IS": All equipment/property is sold "AS IS, WHERE IS" with no warranty or guarantees, expressed or implied, No operational assessments or testing have been made by Del Peterson on this item, it has been photographed ONLY.



#215 - Hance Model 85 S Bucket Elevator (Item-215)

Hance Model 85 S Bucket Elevator (Item-215), discharge spout is 4", cups are 3" x 2", unit is 1/2HP, 3 phase, 230/460 volts, 33' 2" overall height, 31' 2" discharge height, unit is approx. 85 BPH. Notes: Item Location: Trilla, IL 62469 Equipment Sold "AS IS, WHERE IS": All equipment/property is sold "AS IS, WHERE IS" with no warranty or guarantees, expressed or implied, No operational assessments or testing have been made by Del Peterson on this item, it has been photographed ONLY.



#216 - Howe Richardson G17 Bagger (Item-216)

Howe Richardson G17 Bagger (Item-216), comes with full set of weights and dashpot oil, 25-140lbs capacity, unit is rebuilt and is in excellent condition, modeling stand NOT included. Notes: Item Location: Trilla, IL 62469 Equipment Sold "AS IS, WHERE IS": All equipment/property is sold "AS IS, WHERE IS" with no warranty or guarantees, expressed or implied, No operational assessments or testing have been made by Del Peterson on this item, it has been photographed ONLY.



#217 - Crippen PM2-5472 Scalper / Seed Cleaner (Item-217)

Crippen PM2-5472 Scalper / Seed Cleaner (Item-217), 1HP, 230/460 volts, comes with 2 screens (sizes 10 RD and 18 RD), each screen is in 2 pieces that are 54" x 36" each, additional screens can be purchased from Commodity Traders International, unit is equipped with variable speed shoe shake and screen thumpers that keep the screen clean during operation. [CLICK HERE FOR VIDEO](#) Notes: Item Location: Trilla, IL 62469 Equipment Sold "AS IS, WHERE IS": All equipment/property is sold "AS IS, WHERE IS" with no warranty or guarantees, expressed or implied, No operational assessments or testing have been made by Del Peterson on this item, it has been photographed ONLY.



#218 - Complete 5 Piece Seed Cleaning Plant (Item-218)

Complete 5 Piece Seed Cleaning Plant (Item-218), includes a rebuilt Clipper NO. 6 seed cleaner, an extended hopper above the cleaner, NEW poly-plastic screw infeed auger for gentle handling, NEW steel & rubber lined screw conveyor, and a NEW Thrifty-Lift M-100 bucket elevator, Thrifty-Lift has an overall height of 15' 3" and a discharge height of 12' 10", the No. 6 Seed Cleaner is made for cleaning small to large quantities of product with a capacity of 60-70 BPH, it comes with screens for corn, soybeans, wheat and oats, additional screens can be purchased from Commodity Traders International, units are in very nice, ready-to-use condition, this unit has been partially disassembled and is ready for shipment. [CLICK HERE FOR VIDEO](#) Notes: Item Location: Trilla, IL 62469 Equipment Sold "AS IS, WHERE IS": All equipment/property is sold "AS IS, WHERE IS" with no warranty or guarantees, expressed or implied, No operational assessments or testing have been made by Del Peterson on this item, it has been photographed ONLY.



#219 - Schlagel Model 30137 Bucket Elevator (Item-219)

Schlagel Model 30137 Bucket Elevator (Item-219), 20HP, 230/460 volt, 3 phase, 13" x 7" buckets, 5,000 - 7,000 BPH, 60' 3" overall height, 45 degree discharge and 52' 6" discharge height, unit has a service platform that is 10' 10" x 8' 11", unit has a rest platform that is 7' 6" x 3' 8", it also has a Dodge reducer drive system and caged safety ladder for easy access, unit also comes with NEW belt and cups, unit is in good serviceable condition, operator's manual included. Notes: Item Location: Trilla, IL 62469 Equipment Sold "AS IS, WHERE IS": All equipment/property is sold "AS IS, WHERE IS" with no warranty or guarantees, expressed or implied, No operational assessments or testing have been made by Del Peterson on this item, it has been photographed ONLY.



#220 - Hance Bucket Elevator (Item-220)

Hance Bucket Elevator (Item-220), Model 110GH, 4" x 3" buckets, 30' overall height, 27' 6" discharge height, 4" discharge spout, 3/4HP, 208-230/460 volts, 3 phase, approx. 110 BPH capacity. Notes: Item Location: Trilla, IL 62469 Equipment Sold "AS IS, WHERE IS": All equipment/property is sold "AS IS, WHERE IS" with no warranty or guarantees, expressed or implied, No operational assessments or testing have been made by Del Peterson on this item, it has been photographed ONLY.



#221 - Clipper Shaker Trough (Item-221)

Clipper Shaker Trough (Item-221), the trough is 12" W x 11' L x 5" deep, 3/4HP, 115/230 volts, single phase. Notes: Item Location: Trilla, IL 62469 Equipment Sold "AS IS, WHERE IS": All equipment/property is sold "AS IS, WHERE IS" with no warranty or guarantees, expressed or implied, No operational assessments or testing have been made by Del Peterson on this item, it has been photographed ONLY.



#222 - Hance Bucket Elevator (Item-222)

Hance Bucket Elevator (Item-222), 6" x 4" buckets, Model 470GH, 1.5HP, 3 phase, 230/460 volts, 6" round discharge, 27' overall height and 24' discharge height, approx. 470 BPH capacity, cups and leg show some stain from seed treatment but have been thoroughly washed. Notes: Item Location: Trilla, IL 62469 Equipment Sold "AS IS, WHERE IS": All equipment/property is sold "AS IS, WHERE IS" with no warranty or guarantees, expressed or implied, No operational assessments or testing have been made by Del Peterson on this item, it has been photographed ONLY.



#223 - Spee-Dee Packaging Volumetric Filler / Bagger (Item-223)

Spee-Dee Packaging Volumetric Filler / Bagger (Item-223), Model CHE-446, unit is powered by 115 volt, single phase motor, it has a 4 cup, heavy duty indexing filler. Unit uses 6" diameter volume cups and 17" diameter plates for fast and smooth high capacity filling, you can do 15 to 30 or more fills per minute. Unit has 60 to 800 cubic inches capacities, fills free-flowing as well as dense semi free-flowing products like planters mix, road salt, dry dog food or soap powders, this rotary volumetric filler / bagger has been cleaned and inspected and is in good serviceable condition, it comes with four 5" x 6" weigh cup cylinders. Additional weigh cup cylinders can be purchased from Spee-Dee Packaging Machinery Inc. [CLICK HERE FOR VIDEO](#) Notes: Item Location: Trilla, IL 62469 Equipment Sold "AS IS, WHERE IS": All equipment/property is sold "AS IS, WHERE IS" with no warranty or guarantees, expressed or implied, No operational assessments or testing have been made by Del Peterson on this item, it has been photographed ONLY.



#224 - Brand Rite Model 6000 Heat Sealer (Item-224)

Brand Rite Model 6000 Heat Sealer (Item-224), Model 6000-2120-000, single phase, 115 volt, Adjustable height to accommodate various sizes of polyethylene bags, unit comes with 11' long bag moving conveyor, bags are guided through the machine by conveying belts, sealing is accomplished by the material passing through two 10" heated bars separated by Teflon sealing bands, conveyor model is ATB, S/N 502, the Model 6000 seals most types of barrier materials in addition to straight polyethylene bags up to 12 mil single thickness or 6 mil single thickness on bags with gussets (24 mil total), change over from one material to another is done with very little or no adjustments required, the advantages of this multiple capability machine are numerous, you can change from one type of bag or seal to another with virtually no machine down time, the Model 6000 Band Sealer provides a flat seal it gives a nice cosmetic appearance on clear polypropylene materials, maintenance on this machine is designed to be user friendly, sealing band change can be made in minutes. [CLICK HERE FOR VIDEO](#) Notes: Item Location: Trilla, IL 62469 Equipment Sold "AS IS, WHERE IS": All equipment/property is sold "AS IS, WHERE IS" with no warranty or guarantees, expressed or implied, No operational assessments or testing have been made by Del Peterson on this item, it has been photographed ONLY.



#225 - Ohaus Triple Beam Balance 700 Series Scale (Item-225)

Ohaus Triple Beam Balance 700 Series Scale (Item-225), the triple beam balance feature has notched and tiered beams for ease in reading, positive poise positioning for repeatability, a magnetic damper for fast, accurate weighing and zero adjust compensator, max capacity is 2,610 grams or 5lbs 2 oz. Notes: Item Location: Trilla, IL 62469 Equipment Sold "AS IS, WHERE IS": All equipment/property is sold "AS IS, WHERE IS" with no warranty or guarantees, expressed or implied, No operational assessments or testing have been made by Del Peterson on this item, it has been photographed ONLY.



#226 - Stars System Filter Press (Item-226)

Stars System Filter Press (Item-226), Model 20SS4-21952, Model 20-18 7/8-1P-BS, 5HP 3 phase, 208-230/460 volts, unit has (19) stainless steel filter plates that measure 18 7/8" x 18 7/8". Notes: Item Location: Trilla, IL 62469 Equipment Sold "AS IS, WHERE IS": All equipment/property is sold "AS IS, WHERE IS" with no warranty or guarantees, expressed or implied, No operational assessments or testing have been made by Del Peterson on this item, it has been photographed ONLY.



#227 - Dodge Shaft Mount Reducer (Item-227)

Dodge Shaft Mount Reducer (Item-227), Ratio 14.10 -1, has a 15 3/4" B section pulley, input shaft is 1 1/8" and output shaft is 1 15/16". Notes: Item Location: Trilla, IL 62469 Equipment Sold "AS IS, WHERE IS": All equipment/property is sold "AS IS, WHERE IS" with no warranty or guarantees, expressed or implied, No operational assessments or testing have been made by Del Peterson on this item, it has been photographed ONLY.



#228 - 12" x 12" Pneumatic Air Gate (Item-228)

12" x 12" Pneumatic Air Gate (Item-228), the gate is powered by a pneumatic cylinder. Notes: Item Location: Trilla, IL 62469 Equipment Sold "AS IS, WHERE IS": All equipment/property is sold "AS IS, WHERE IS" with no warranty or guarantees, expressed or implied, No operational assessments or testing have been made by Del Peterson on this item, it has been photographed ONLY.



#229 - Portable Wooden Leg (Item-229)

Portable Wooden Leg (Item-229), unit is on caster wheels for moving around a seed plant, inlet spout is 2' 3" up from base, discharge is 3' 3", overall height is 6' 5", cup size is 3" x 7", unit will move approx. 30-50 BPH. [CLICK HERE FOR VIDEO](#)
Notes: Item Location: Trilla, IL 62469 Equipment Sold "AS IS, WHERE IS": All equipment/property is sold "AS IS, WHERE IS" with no warranty or guarantees, expressed or implied, No operational assessments or testing have been made by Del Peterson on this item, it has been photographed ONLY.



#230 - 44" Diameter 6-Groove C Section Pulley (Item-230)

44" Diameter 6-Groove C Section Pulley (Item-230). Notes: Item Location: Trilla, IL 62469 Equipment Sold "AS IS, WHERE IS": All equipment/property is sold "AS IS, WHERE IS" with no warranty or guarantees, expressed or implied, No operational assessments or testing have been made by Del Peterson on this item, it has been photographed ONLY.



#231 - SR Browning 6-Groove B Section Pulley (Item-231)

SR Browning 6-Groove B Section Pulley (Item-231), 38" diameter. Notes: Item Location: Trilla, IL 62469 Equipment Sold "AS IS, WHERE IS": All equipment/property is sold "AS IS, WHERE IS" with no warranty or guarantees, expressed or implied, No operational assessments or testing have been made by Del Peterson on this item, it has been photographed ONLY.



#232 - 37.5" Diameter 3-Groove B Section Pulley (Item-232)

37.5" Diameter 3-Groove B Section Pulley (Item-232), 2 7/16" bushing. Notes: Item Location: Trilla, IL 62469 Equipment Sold "AS IS, WHERE IS": All equipment/property is sold "AS IS, WHERE IS" with no warranty or guarantees, expressed or implied, No operational assessments or testing have been made by Del Peterson on this item, it has been photographed ONLY.



#233 - (3) 100 Pitch Sprockets (Item-233)

(3) 100 Pitch Sprockets (Item-233), (1) 26" diameter, 64 tooth, 2 15/16 bore, (1) 24" diameter, 58 tooth, 2 15/16 bore, (1) 25.5" diameter, 62 tooth, 3 7/16 bore. Notes: Item Location: Trilla, IL 62469 Equipment Sold "AS IS, WHERE IS": All equipment/property is sold "AS IS, WHERE IS" with no warranty or guarantees, expressed or implied, No operational assessments or testing have been made by Del Peterson on this item, it has been photographed ONLY.



#234 - 160 Pitch Sprocket (Item-234)

160 Pitch Sprocket (Item-234), 39.5" diameter, 60 tooth, 4 15/16 bore. Notes: Item Location: Trilla, IL 62469 Equipment Sold "AS IS, WHERE IS": All equipment/property is sold "AS IS, WHERE IS" with no warranty or guarantees, expressed or implied, No operational assessments or testing have been made by Del Peterson on this item, it has been photographed ONLY.



#235 - Marion Mixer Counter Shafts w/ Sprockets (Item-235)

Marion Mixer Counter Shafts w/ Sprockets (Item-235), both are 5", 80 pitch, 14 tooth, 2" bore. Notes: Item Location: Trilla, IL 62469 Equipment Sold "AS IS, WHERE IS": All equipment/property is sold "AS IS, WHERE IS" with no warranty or guarantees, expressed or implied, No operational assessments or testing have been made by Del Peterson on this item, it has been photographed ONLY.



#236 - (2) 5-Groove B Section Pulleys (Item-236)

(2) 5-Groove B Section Pulleys (Item-236), (1) is 20" diameter w/ 2 7/16 bore bushing, the other is 25" diameter w/ 2 7/16 bore bushing. Notes: Item Location: Trilla, IL 62469 Equipment Sold "AS IS, WHERE IS": All equipment/property is sold "AS IS, WHERE IS" with no warranty or guarantees, expressed or implied, No operational assessments or testing have been made by Del Peterson on this item, it has been photographed ONLY.



#237 - Components to a Systems One Seed Jet Blower (Item-237)

Components to a Systems One Seed Jet Blower (Item-237), 11HP Briggs and Stratton motor (has been tuned up), unit has a 12 volt, battery operated air-lock, wagon unloads in the small hopper above air-lock, parts to complete the unit can be purchased from Yetter Manufacturing Co., Inc. at the buyer's expense, one video shows what is selling on the auction, the other video shows what the unit can do once its completed. [CLICK HERE FOR VIDEO](#) [CLICK HERE FOR VIDEO](#)
Notes: Item Location: Trilla, IL 62469 Equipment Sold "AS IS, WHERE IS": All equipment/property is sold "AS IS, WHERE IS" with no warranty or guarantees, expressed or implied, No operational assessments or testing have been made by Del Peterson on this item, it has been photographed ONLY.



#238 - Taylor TE 100 Self-Correcting Bagging Scale (Item-238)

Taylor TE 100 Self-Correcting Bagging Scale (Item-238), 20-125lb capacity, this is a good serviceable unit. [CLICK HERE FOR VIDEO](#) Notes: Item Location: Trilla, IL 62469 Equipment Sold "AS IS, WHERE IS": All equipment/property is sold "AS IS, WHERE IS" with no warranty or guarantees, expressed or implied, No operational assessments or testing have been made by Del Peterson on this item, it has been photographed ONLY.



#239 - Crippen GX 360-5-LH Seed Cleaner (Item-239)

Crippen GX 360-5-LH Seed Cleaner (Item-239), 7.5HP, single phase, 230 volt motor, this is a 3-screen mill with top and bottom air, 100-300 BPH capacity, unit comes with stand for the cleaner, shaker trough for clean grain discharge, and air ducting for top and bottom air, unit also comes with several screens for cleaning corn, beans, wheat and popcorn, additional screens can be purchased later from Commodity Traders International at buyer's expense, unit is in excellent condition. [CLICK HERE FOR VIDEO](#) Notes: Item Location: Trilla, IL 62469 Equipment Sold "AS IS, WHERE IS": All equipment/property is sold "AS IS, WHERE IS" with no warranty or guarantees, expressed or implied, No operational assessments or testing have been made by Del Peterson on this item, it has been photographed ONLY.



#240 - Carter Day 1522 Disc Mill (Item-240)

Carter Day 1522 Disc Mill (Item-240), Style 7T4, 1/3HP, 230/460 volt motor, discs are (starting from the infeed end): V3 (Qty - 3), V3.5 (Qty - 11), V4 (Qty - 4), V4.5 (Qty - 4), unit is in good, serviceable condition. Notes: Item Location: Trilla, IL 62469 Equipment Sold "AS IS, WHERE IS": All equipment/property is sold "AS IS, WHERE IS" with no warranty or guarantees, expressed or implied, No operational assessments or testing have been made by Del Peterson on this item, it has been photographed ONLY.



#241 - 24" Carter Day Closed Circuit Aspirator (Item-241)

24" Carter Day Closed Circuit Aspirator (Item-241), capacity 50-200 BPH, 1HP, 208-220/440 volt, 3 phase, closed circuit units are user friendly in that they re-circulate their own air, eliminating the need for external fans, ducting, cyclones and dust collectors, unit is in excellent condition. Notes: Item Location: Trilla, IL 62469 Equipment Sold "AS IS, WHERE IS": All equipment/property is sold "AS IS, WHERE IS" with no warranty or guarantees, expressed or implied, No operational assessments or testing have been made by Del Peterson on this item, it has been photographed ONLY.



#242 - 10HP Single Phase Hammer Mill (Item-242)

10HP Single Phase Hammer Mill (Item-242), in good condition, comes with 2 screens that are 1/2" hole and 1/4" hole, it has a blower discharge & comes with cyclone, cyclone is 24" die, with a 10" outlet. [CLICK HERE FOR VIDEO](#) Notes: Item Location: Trilla, IL 62469 Equipment Sold "AS IS, WHERE IS": All equipment/property is sold "AS IS, WHERE IS" with no warranty or guarantees, expressed or implied, No operational assessments or testing have been made by Del Peterson on this item, it has been photographed ONLY.



#243 - NEW 6' Diameter Hopper Bin Cone (Item-243)

NEW 6' Diameter Hopper Bin Cone (Item-243), 60 degree hopper, with ring. Notes: Item Location: Trilla, IL 62469 Equipment Sold "AS IS, WHERE IS": All equipment/property is sold "AS IS, WHERE IS" with no warranty or guarantees, expressed or implied, No operational assessments or testing have been made by Del Peterson on this item, it has been photographed ONLY.



#244 - John Deere 1B Corn Sheller (Item-244)

John Deere 1B Corn Sheller (Item-244), with single phase motor, also comes with (2) small hand held corn shellers (see pictures). [CLICK HERE FOR VIDEO](#) Notes: Item Location: Trilla, IL 62469 Equipment Sold "AS IS, WHERE IS": All equipment/property is sold "AS IS, WHERE IS" with no warranty or guarantees, expressed or implied, No operational assessments or testing have been made by Del Peterson on this item, it has been photographed ONLY.



#245 - Table Top Fischbein Sewing Slide Table (Item-245)

Table Top Fischbein Sewing Slide Table (Item-245), for small paper bags, this has a New Long sewing head & is mounted on a Fischbein carriage conveyor unit. Notes: Item Location: Trilla, IL 62469 Equipment Sold "AS IS, WHERE IS": All equipment/property is sold "AS IS, WHERE IS" with no warranty or guarantees, expressed or implied, No operational assessments or testing have been made by Del Peterson on this item, it has been photographed ONLY.



#246 - Stack and Store Tote Bins (Item-246)

Stack and Store Tote Bins (Item-246), Size 54" L x 42" W x 38" H, shipping weight 270lbs, 35 cu. ft. capacity, discharge opening 16.5" x 6".[CLICK HERE FOR MORE INFORMATION](#) Notes: Item Location: Trilla, IL 62469 Equipment Sold "AS IS, WHERE IS": All equipment/property is sold "AS IS, WHERE IS" with no warranty or guarantees, expressed or implied, No operational assessments or testing have been made by Del Peterson on this item, it has been photographed ONLY.



#247 - Stack and Store Tote Bins (Item-247)

Stack and Store Tote Bins (Item-247), Size 54" L x 42" W x 38" H, shipping weight 270lbs, 35 cu. ft. capacity, discharge opening 16.5" x 6".[CLICK HERE FOR MORE INFORMATION](#) Notes: Item Location: Trilla, IL 62469 Equipment Sold "AS IS, WHERE IS": All equipment/property is sold "AS IS, WHERE IS" with no warranty or guarantees, expressed or implied, No operational assessments or testing have been made by Del Peterson on this item, it has been photographed ONLY.



#248 - Ideal Model S1 Indent Separator / Length Grader (Item-248)

Ideal Model S1 Indent Separator / Length Grader (Item-248), this unit comes with a single phase motor, 110 volt, has a #12 drum. Notes: Item Location: Trilla, IL 62469 Equipment Sold "AS IS, WHERE IS": All equipment/property is sold "AS IS, WHERE IS" with no warranty or guarantees, expressed or implied, No operational assessments or testing have been made by Del Peterson on this item, it has been photographed ONLY.



#249 - Crippen Gravity Table (Item-249)

Crippen Gravity Table (Item-249), Model G-4393-LH, built in 1996, comes with 2 decks, (1) for small grains and (1) for large grains, also has partial dust hood w/ the appropriate sized fan, the dust fan is 7.5HP, 208-230/460 volts, shaker is 2HP, 208-230/460 volts, gravity fan motor is 7.5HP, 208-230/460 volts, 50-200 BPH capacity, please see attached literature for more information.[CLICK HERE FOR VIDEO](#) Notes: Item Location: Trilla, IL 62469 Equipment Sold "AS IS, WHERE IS": All equipment/property is sold "AS IS, WHERE IS" with no warranty or guarantees, expressed or implied, No operational assessments or testing have been made by Del Peterson on this item, it has been photographed ONLY.



#250 - Crippen Model 1045 Bucket Elevator (Item-250)

Crippen Model 1045 Bucket Elevator (Item-251), 3HP, 208-230/460 volts, 3 phase, 83' overall height and 79' discharge height, 1,000 - 2,000 BPH capacity, bucket size 9" x 5", bucket elevator is supplied with good belt and plastic cups, unit has been checked over - all bearings are good, unit also has a Dodge shaft mount reducer, see attached literature for more information. Notes: Item Location: Trilla, IL 62469 Equipment Sold "AS IS, WHERE IS": All equipment/property is sold "AS IS, WHERE IS" with no warranty or guarantees, expressed or implied, No operational assessments or testing have been made by Del Peterson on this item, it has been photographed ONLY.



#251 - Crippen Series 2 Bucket Elevator (Item-251)

Crippen Series 2 Bucket Elevator (Item-251), 1HP, 208-230/460 volts, 3 phase, 15.5' overall height and 13' discharge height, 200-600 BPH capacity, bucket size 6" x 4", bucket elevator will be supplied with good belt and plastic cups, unit has been checked over - all bearings are good, unit also has a Dodge shaft mount reducer, see attached literature for more information. Notes: Item Location: Trilla, IL 62469 Equipment Sold "AS IS, WHERE IS": All equipment/property is sold "AS IS, WHERE IS" with no warranty or guarantees, expressed or implied, No operational assessments or testing have been made by Del Peterson on this item, it has been photographed ONLY.



#252 - Crippen Series 4 Bucket Elevator (Item-252)

Crippen Series 4 Bucket Elevator (Item-252), 3HP, 208-230/460 volts, 3 phase, 39' overall height and 36' discharge height, 500-1,200 BPH capacity, bucket size 7" x 4", bucket elevator will be supplied with New belt and plastic cups, unit has been checked over - all bearings are good, unit also has Dodge shaft mount reducer, see attached literature for more information. Notes: Item Location: Trilla, IL 62469 Equipment Sold "AS IS, WHERE IS": All equipment/property is sold "AS IS, WHERE IS" with no warranty or guarantees, expressed or implied, No operational assessments or testing have been made by Del Peterson on this item, it has been photographed ONLY.



#253 - Crippen Series 2 Bucket Elevator (Item-253)

Crippen Series 2 Bucket Elevator (Item-253), 2HP, 208-230/460 volts, 3 phase, 27' overall height and 24.5' discharge height, 200-600 BPH capacity, bucket size 5" x 4", bucket elevator will be supplied with new belt and plastic cups, unit has been checked over - all bearings are good, see attached literature for more information. Notes: Item Location: Trilla, IL 62469 Equipment Sold "AS IS, WHERE IS": All equipment/property is sold "AS IS, WHERE IS" with no warranty or guarantees, expressed or implied, No operational assessments or testing have been made by Del Peterson on this item, it has been photographed ONLY.



#254 - Hance Model 470 GH Bucket Elevator (Item-254)

Hance Model 470 GH Bucket Elevator (Item-254), 1.5HP 3 phase, 220-230/440-460 volts, 6" round discharge, 6" x 4" buckets, 35.5' overall height and 32.5' discharge height, 470 BPH gentle handling capacity, unit is supplied with a good belt and plastic cups. Notes: Item Location: Trilla, IL 62469 Equipment Sold "AS IS, WHERE IS": All equipment/property is sold "AS IS, WHERE IS" with no warranty or guarantees, expressed or implied, No operational assessments or testing have been made by Del Peterson on this item, it has been photographed ONLY.



#255 - Spee-Dee Packaging Volumetric Filler / Bagger (Item-255)

Spee-Dee Packaging Volumetric Filler / Bagger (Item-255), Model CHE-506, unit is powered by 115 volt, single phase motor, it has a 4 cup, heavy duty indexing filler, unit uses 6" diameter volume cups that are 22" long and 17" diameter plates for fast and smooth high capacity filling, you can do 15 to 30 or more fills per minute, unit has 60 to 800 cubic inches capacities, fills free-flowing as well as dense semi free-flowing products like planters mix, road salt, dry dog food or soap powders, this rotary volumetric filler / bagger has been cleaned and inspected and is in good serviceable condition, it comes with (4) 5" x 22" weigh cup cylinders, additional weigh cup cylinders can be purchased from Spee-Dee Packaging Machinery, Inc. [CLICK HERE FOR VIDEO](#) Notes: Item Location: Trilla, IL 62469 Equipment Sold "AS IS, WHERE IS": All equipment/property is sold "AS IS, WHERE IS" with no warranty or guarantees, expressed or implied, No operational assessments or testing have been made by Del Peterson on this item, it has been photographed ONLY.



#256 - Hance Model 470 GH Bucket Elevator (Item-256)

Hance Model 470 GH Bucket Elevator (Item-256), 1.5HP, 3 phase, 220-230/440-460 volts, 6" round discharge, 6" x 4" buckets, 34.5' overall height and 32.5' discharge height, 470 BPH gentle handling capacity, unit will be supplied with a good belt and plastic cups. Notes: Item Location: Trilla, IL 62469 Equipment Sold "AS IS, WHERE IS": All equipment/property is sold "AS IS, WHERE IS" with no warranty or guarantees, expressed or implied, No operational assessments or testing have been made by Del Peterson on this item, it has been photographed ONLY.



#257 - Crippen Series 1 Bucket Elevator (Item-257)

Crippen Series 1 Bucket Elevator (Item-257), 1HP, 208-230/460 volts, 3 phase, 42' overall height and 39' discharge height, 100-400 BPH capacity, bucket size 4" x 3", bucket elevator is supplied with good belt and plastic cups, unit has been checked over, all bearings are good, see attached literature for more information. Notes: Item Location: Trilla, IL 62469 Equipment Sold "AS IS, WHERE IS": All equipment/property is sold "AS IS, WHERE IS" with no warranty or guarantees, expressed or implied, No operational assessments or testing have been made by Del Peterson on this item, it has been photographed ONLY.



#258 - Forsberg H6 Destoner With Fan (Item-258)

Forsberg H6 Destoner With Fan (Item-258), capacity up to 22,000lbs per hour, unit has been checked over and is in good working, mechanical condition, deck mesh is for medium sized seed such as wheat, rye, oats, barley, etc., other mesh sizes can be purchased from Forsberg, 1HP, 230/460 volt, 3 phase motor, this is a vacuum type unit, and comes with the correct size 10HP fan to pull air through the destoner, click on the link below to read more about this unit. [CLICK HERE FOR VIDEO](#) Notes: Item Location: Trilla, IL 62469 Equipment Sold "AS IS, WHERE IS": All equipment/property is sold "AS IS, WHERE IS" with no warranty or guarantees, expressed or implied, No operational assessments or testing have been made by Del Peterson on this item, it has been photographed ONLY.



#259 - 10HP Grain Bin Fan (Item-259)

10HP Grain Bin Fan (Item-259), 2 fans in 1, this unit has 2 fans that can be fitted to one larger bin or piped off separately to 2 grain bins, motor is 10HP, 3 phase, 230/460 volts, unit has had all new bearing installed. [CLICK HERE FOR VIDEO](#) Notes: Item Location: Trilla, IL 62469 Equipment Sold "AS IS, WHERE IS": All equipment/property is sold "AS IS, WHERE IS" with no warranty or guarantees, expressed or implied, No operational assessments or testing have been made by Del Peterson on this item, it has been photographed ONLY.



#260 - Universal Bucket Elevator Service Platform (Item-260)

Universal Bucket Elevator Service Platform (Item-260), 65" x 65", also comes with rest platform. Notes: Item Location: Trilla, IL 62469 Equipment Sold "AS IS, WHERE IS": All equipment/property is sold "AS IS, WHERE IS" with no warranty or guarantees, expressed or implied, No operational assessments or testing have been made by Del Peterson on this item, it has been photographed ONLY.



#261 - Power Matic Dust Collection System (Item-261)

Power Matic Dust Collection System (Item-261), 3HP, Model PM1900, CFO 1750, 230 volts, single phase. [CLICK HERE FOR VIDEO](#) Notes: Item Location: Trilla, IL 62469 Equipment Sold "AS IS, WHERE IS": All equipment/property is sold "AS IS, WHERE IS" with no warranty or guarantees, expressed or implied, No operational assessments or testing have been made by Del Peterson on this item, it has been photographed ONLY.



#262 - Modern Light Metals Dock Plate (Item-262)

Modern Light Metals Dock Plate (Item-262), 12,000lb capacity, 48" wide x 60" long, plate weighs 220lbs. Notes: Item Location: Trilla, IL 62469 Equipment Sold "AS IS, WHERE IS": All equipment/property is sold "AS IS, WHERE IS" with no warranty or guarantees, expressed or implied, No operational assessments or testing have been made by Del Peterson on this item, it has been photographed ONLY.



#263 - Forsberg Air Classifier (Item-263)

Forsberg Air Classifier (Item-263), 18", this unit is made for aspirating grain & other free flowing material, it has a vibratory feed tray & a 1.5HP fan motor, 230/460 volts, 3 phase, click on the literature to read more about it. [CLICK HERE FOR VIDEO](#) Notes: Item Location: Trilla, IL 62469 Equipment Sold "AS IS, WHERE IS": All equipment/property is sold "AS IS, WHERE IS" with no warranty or guarantees, expressed or implied, No operational assessments or testing have been made by Del Peterson on this item, it has been photographed ONLY.



#264 - 300 to 400 Pounds Batch Mixer (Item-264)

300 to 400 Pounds Batch Mixer (Item-264), this unit is a horizontal paddle mixer with a single phase motor, Chamber is 48" long & 18" diameter, this unit is mounted on a roller frame & has a bottom gate discharge. [CLICK HERE FOR VIDEO](#) Notes: Item Location: Trilla, IL 62469 Equipment Sold "AS IS, WHERE IS": All equipment/property is sold "AS IS, WHERE IS" with no warranty or guarantees, expressed or implied, No operational assessments or testing have been made by Del Peterson on this item, it has been photographed ONLY.



#265 - Newlong Sewing Machine (Item-265)

New Long Sewing Machine (Item-265), this is a BRAND NEW hand held sewing machine, Model NP-7A, made by Newlong Notes: Item Location: Trilla, IL 62469 Equipment Sold "AS IS, WHERE IS": All equipment/property is sold "AS IS, WHERE IS" with no warranty or guarantees, expressed or implied, No operational assessments or testing have been made by Del Peterson on this item, it has been photographed ONLY.



#266 - 18' Belt Conveyor (Item-266)

18' Belt Conveyor (Item-266), 12" wide crescent top belt, motor is 1HP, 208/230/460 volts, comes with a discharge spout & comes with a belt cover. Notes: Item Location: Trilla, IL 62469 Equipment Sold "AS IS, WHERE IS": All equipment/property is sold "AS IS, WHERE IS" with no warranty or guarantees, expressed or implied, No operational assessments or testing have been made by Del Peterson on this item, it has been photographed ONLY.



#267 - Grain Way Conveyor (Item-267)

Grain Way Conveyor (Item-267), 24' long x 12" wide belt, motor is 3HP 208/230/460 volt, 3 phase, comes with adjustable wheels to make it portable, this unit can be mounted under grain bin floors, the Grain Way incline conveyor moves grain and provides plenty of discharge clearance, use this conveyor under aeration floors of multiple grain bins, drive over pits and numerous other applications. [CLICK HER FOR MORE INFORMATION](#) Notes: Item Location: Trilla, IL 62469 Equipment Sold "AS IS, WHERE IS": All equipment/property is sold "AS IS, WHERE IS" with no warranty or guarantees, expressed or implied, No operational assessments or testing have been made by Del Peterson on this item, it has been photographed ONLY.



#268 - 1996 Double R Weigh Wagon (Item-268)

1996 Double R Weigh Wagon (Item-268), with scale & gas motor, motor has been serviced & runs well, scale works & a new battery has been installed, auger folds down for transport, the unit does come with a title, estimated capacity is 100 to 150 bushel. Notes: PLEASE ALLOW BETWEEN 30-60 DAYS FOR TITLE TRANSFER. Item Location: Trilla, IL 62469 Equipment Sold "AS IS, WHERE IS": All equipment/property is sold "AS IS, WHERE IS" with no warranty or guarantees, expressed or implied, No operational assessments or testing have been made by Del Peterson on this item, it has been photographed ONLY.



#269 - Eureka Office Tester Cleaner Seed Cleaner (Item-269)

Eureka Office Tester Cleaner Seed Cleaner (Item-269), this unit has been modified to use Clipper Office tester screens & has had electric motors added to it to make it more user friendly, this can be used on many different seed crops as long as you have the correct screens, the motors are single phase, 110 volts, SELLER WILL SUPPLY 2 SCREENS (1 SET) OF THE WINNING BIDDERS CHOICE. [CLICK HER FOR VIDEO](#) Notes: Item Location: Trilla, IL 62469 Equipment Sold "AS IS, WHERE IS": All equipment/property is sold "AS IS, WHERE IS" with no warranty or guarantees, expressed or implied, No operational assessments or testing have been made by Del Peterson on this item, it has been photographed ONLY.



#270 - Propane Pump Station (Item-270)

Propane Pump Station (Item-270), this is for filling forklift bottles & other propane tanks, it works well & is single phase 220 volts, it has a gallon meter but it DOES NOT register the gallons pumped, this does not affect the pumping of propane, this is just the pumping station, you will need your own supply tank & customized fill hoses, this unit has (2) filling ports, (1) for small bottles and (1) for larger tanks like tractor & propane vehicles. Notes: Item Location: Trilla, IL 62469 Equipment Sold "AS IS, WHERE IS": All equipment/property is sold "AS IS, WHERE IS" with no warranty or guarantees, expressed or implied, No operational assessments or testing have been made by Del Peterson on this item, it has been photographed ONLY.



#271 - Layco Conveyor With Incline (Item-271)

Layco Conveyor With Incline (Item-271), 46' long x 16" wide belt, 5HP 3 phase, 230/460 volt motor, unit has complete cover and was placed under bulk bins to unload them. Notes: Item Location: Trilla, IL 62469 Equipment Sold "AS IS, WHERE IS": All equipment/property is sold "AS IS, WHERE IS" with no warranty or guarantees, expressed or implied, No operational assessments or testing have been made by Del Peterson on this item, it has been photographed ONLY.



#272 - Forsberg #9 Gravity Table (Item-272)

Forsberg #9 Gravity Table (Item-272), this unit has a single phase 5HP, 220 volt motor, comes with a small grain deck for wheat, rye & spelt, etc., capacity range is up to 80 BPH, deck mesh can be changed to do other grains & wild flower seeds if needed (by the buyer).CLICK HERE FOR VIDEO Notes: Item Location: Trilla, IL 62469 Equipment Sold "AS IS, WHERE IS": All equipment/property is sold "AS IS, WHERE IS" with no warranty or guarantees, expressed or implied, No operational assessments or testing have been made by Del Peterson on this item, it has been photographed ONLY.



#273 - Under Track/Truck/Bin Stainless Steel Conveyor (Item-273)

Under Track/Truck/Bin Stainless Steel Conveyor (Item-273), 22' long with incline 12", comes with 3HP motor, 230/460 3 phase, this unit has all new sprockets & bearings & has a full cover, the belt is a stainless steel link type, Dodge shaft mount speed reducer.CLICK HERE FOR MORE INFORMATION Notes: Item Location: Trilla, IL 62469 Equipment Sold "AS IS, WHERE IS": All equipment/property is sold "AS IS, WHERE IS" with no warranty or guarantees, expressed or implied, No operational assessments or testing have been made by Del Peterson on this item, it has been photographed ONLY.



#274 - 40 Bushel Surge Bin (Item-274)

40 Bushel Surge Bin (Item-274), 8" x 8" bottom discharge, bin is 48" x 48" will hold approx. 40 bushel, nice condition. Notes: Item Location: Trilla, IL 62469 Equipment Sold "AS IS, WHERE IS": All equipment/property is sold "AS IS, WHERE IS" with no warranty or guarantees, expressed or implied, No operational assessments or testing have been made by Del Peterson on this item, it has been photographed ONLY.



#275 - General Electric 200 AMP Stick Welder (Item-275)

General Electric 200 AMP Stick Welder (Item-275), with leads, 200 AMPS, type WD-3200, Model #6WD3200B1, unit comes with 30' leads, unit is 3 phase, 220/440 volts.CLICK HERE FOR VIDEO Notes: Item Location: Trilla, IL 62469 Equipment Sold "AS IS, WHERE IS": All equipment/property is sold "AS IS, WHERE IS" with no warranty or guarantees, expressed or implied, No operational assessments or testing have been made by Del Peterson on this item, it has been photographed ONLY.



#276 - Amos 2 Core Enclosed Separator (Item-276)

Amos 2 Core Enclosed Separator (Item-276), Model 100, unit has 5 flight cores, in very good condition, unit will separate Vetch from wheat and rye, and soybeans from corn, any kind of grain that is round from flat, capacity of 100 BPH, click on the link below to read more about this unit. Notes: Item Location: Trilla, IL 62469 Equipment Sold "AS IS, WHERE IS": All equipment/property is sold "AS IS, WHERE IS" with no warranty or guarantees, expressed or implied, No operational assessments or testing have been made by Del Peterson on this item, it has been photographed ONLY.



#277 - NEW Bucket Elevator Bolts & Spacers (Item-277)

NEW Bucket Elevator Bolts & Spacers (Item-277), approx. 3,400 bolts, 1/4 x 1" 3/4 long elevator bolts & approx. 3,200 1/2 poly spacers, ALL ARE NEW. Notes: Item Location: Trilla, IL 62469 Equipment Sold "AS IS, WHERE IS": All equipment/property is sold "AS IS, WHERE IS" with no warranty or guarantees, expressed or implied, No operational assessments or testing have been made by Del Peterson on this item, it has been photographed ONLY.



#278 - Carter Day 60" Duo-Aspirator - Open Circuit (Item-278)

Carter Day 60" Duo-Aspirator - Open Circuit (Item-278), this unit is in nice condition, capacity on wheat is 400 to 500 BPH, read the link below to see what this unit can do, the motor that runs this unit is 208/220/440 3 phase, Style Number is YOY, it also has the transition to hook it up to your Fan or in plant dust control system. Notes: Item Location: Trilla, IL 62469 Equipment Sold "AS IS, WHERE IS": All equipment/property is sold "AS IS, WHERE IS" with no warranty or guarantees, expressed or implied, No operational assessments or testing have been made by Del Peterson on this item, it has been photographed ONLY.



#279 - Forsberg 4800 Screener 2 Deck (Item-279)

Forsberg 4800 Screener 2 Deck (Item-279), this unit has a 2HP motor, 208/230/460 3 phase, The Forsberg's Screen Separator is a positive eccentric, high-speed, vibrating screener which ensures accurate, high capacity and high quality separations, screens can be purchased for many different crops & products, screen size is 34" x 48".CLICK HERE FOR MORE INFORMATIONCLICK HERE FOR VIDEO Notes: Item Location: Trilla, IL 62469 Equipment Sold "AS IS, WHERE IS": All equipment/property is sold "AS IS, WHERE IS" with no warranty or guarantees, expressed or implied, No operational assessments or testing have been made by Del Peterson on this item, it has been photographed ONLY.



#280 - Bulk Seed Bin (Item-280)

Bulk Seed Bin (Item-280), 72" x 72", straight part is 17' long, bottom cone is 6' long, and cover for the bin is 4' tall, total height of the bin 32' 8" tall approx. w/ 600 bushel capacity. Notes: Item Location: Trilla, IL 62469 Equipment Sold "AS IS, WHERE IS": All equipment/property is sold "AS IS, WHERE IS" with no warranty or guarantees, expressed or implied, No operational assessments or testing have been made by Del Peterson on this item, it has been photographed ONLY.



#281 - (2) Cascade Brand 42" Long Forklift Forks (Item-281)

(2) Cascade Brand 42" Long Forklift Forks (Item-281). Notes: Item Location: Trilla, IL 62469 Equipment Sold "AS IS, WHERE IS": All equipment/property is sold "AS IS, WHERE IS" with no warranty or guarantees, expressed or implied, No operational assessments or testing have been made by Del Peterson on this item, it has been photographed ONLY.



#282 - New & Used Parts for John Deere Chopper (Item-282)

New & Used Parts for John Deere Chopper (Item-282), for the John Deere Choppers that are Lots #145 and #163.CLICK HERE FOR VIDEO Notes: Item Location: Trilla, IL 62469 Equipment Sold "AS IS, WHERE IS": All equipment/property is sold "AS IS, WHERE IS" with no warranty or guarantees, expressed or implied, No operational assessments or testing have been made by Del Peterson on this item, it has been photographed ONLY.



#283 - (2) Little David Cardboard Box Sealers (Item-283)

(2) Little David Cardboard Box Sealers (Item-283), adjustable width and height to accommodate various sized of cardboard boxes, 21.5" max width and 24" max height, both units at 115 volt, single phase, one unit is equipped with a pilot plus printer for printing on boxes. Notes: Item Location: Trilla, IL 62469 Equipment Sold "AS IS, WHERE IS": All equipment/property is sold "AS IS, WHERE IS" with no warranty or guarantees, expressed or implied, No operational assessments or testing have been made by Del Peterson on this item, it has been photographed ONLY.



#284 - 30' of Seed Cleaner Ducting w/ Elbows (Item-284)

30' of Seed Cleaner Ducting w/ Elbows (Item-284), ducting is 17 3/4" x 13 1/4", (2) 34 degree elbows and (2) 90 degree sweeping elbows. Notes: Item Location: Trilla, IL 62469 Equipment Sold "AS IS, WHERE IS": All equipment/property is sold "AS IS, WHERE IS" with no warranty or guarantees, expressed or implied, No operational assessments or testing have been made by Del Peterson on this item, it has been photographed ONLY.



#285 - Parker Boiler Model HT-1008 (Item-285)

Parker Boiler Model HT-1008 (Item-285), this boiler uses steam to heat the oil for the Soybean Roasting Line, which is Lot #186, it can be used for other things such as pellet mills and other applications, unit was new in 1991 and last used in 2015, was removed from plant in June 2017.CLICK HERE FOR VIDEO Notes: Item Location: Trilla, IL 62469 Equipment Sold "AS IS, WHERE IS": All equipment/property is sold "AS IS, WHERE IS" with no warranty or guarantees, expressed or implied, No operational assessments or testing have been made by Del Peterson on this item, it has been photographed ONLY.



#286 - Right Hand Oliver 3600 Gravity Deck ONLY (Item-286)

Right Hand Oliver 3600 Gravity Deck ONLY (Item-286), #16 poly-coated overcover for cereal grains. Notes: Item Location: Trilla, IL 62469 Equipment Sold "AS IS, WHERE IS": All equipment/property is sold "AS IS, WHERE IS" with no warranty or guarantees, expressed or implied, No operational assessments or testing have been made by Del Peterson on this item, it has been photographed ONLY.



#287 - Milltronics Weighing Conveyor (Item-287)

Milltronics Weighing Conveyor (Item-287), Model 842-68-OHC-CA5, 1/2HP, 208-230/460 volt, 3 phase, belt is 42" W x 6' L, for weighing products across a belt conveyor. Notes: Item Location: Trilla, IL 62469 Equipment Sold "AS IS, WHERE IS": All equipment/property is sold "AS IS, WHERE IS" with no warranty or guarantees, expressed or implied, No operational assessments or testing have been made by Del Peterson on this item, it has been photographed ONLY.



#288 - Union Special Power Infeeder (Item-288)

Union Special Power Infeeder (Item-288), 3 phase, 220/440 volt, 36" long. Notes: Item Location: Trilla, IL 62469 Equipment Sold "AS IS, WHERE IS": All equipment/property is sold "AS IS, WHERE IS" with no warranty or guarantees, expressed or implied, No operational assessments or testing have been made by Del Peterson on this item, it has been photographed ONLY.



#289 - Heated Auger (Item-289)

Heated Auger (Item-289), has 220 volt, single phase motor with variable speed control to feed a machine, 20' L x 4" diameter, unit has a heat jacket around the tube to pre-heat oil seeds before going into an oil press so oil yield is higher, heat controller is damaged. Notes: Item Location: Trilla, IL 62469 Equipment Sold "AS IS, WHERE IS": All equipment/property is sold "AS IS, WHERE IS" with no warranty or guarantees, expressed or implied, No operational assessments or testing have been made by Del Peterson on this item, it has been photographed ONLY.



#290 - Left Hand Oliver 3600 Gravity Deck ONLY (Item-290)

Left Hand Oliver 3600 Gravity Deck ONLY (Item-290), #16 poly-coated overcover for cereal grains. Notes: Item Location: Trilla, IL 62469 Equipment Sold "AS IS, WHERE IS": All equipment/property is sold "AS IS, WHERE IS" with no warranty or guarantees, expressed or implied, No operational assessments or testing have been made by Del Peterson on this item, it has been photographed ONLY.



#291 - Lab-Tek Sample Mixer (Item-291)

Lab-Tek Sample Mixer (Item-291), 3 gallon, hand crank lab mixer, can be used for hand treating samples before germination tests. [CLICK HERE FOR VIDEO](#) Notes: Item Location: Trilla, IL 62469 Equipment Sold "AS IS, WHERE IS": All equipment/property is sold "AS IS, WHERE IS" with no warranty or guarantees, expressed or implied, No operational assessments or testing have been made by Del Peterson on this item, it has been photographed ONLY.



#292 - Ideal S1-2 Indent Separator (Item-292)

Ideal S1-2 Indent Separator (Item-292), with 12T drums, this size of drum will remove vetch & other like sized grains from rye oats & wheat, etc, unit is in good condition and has a 3 phase, 1HP motor, 208/230/460 volts, unit is mounted on a roll around stand and is height adjustable. [CLICK HERE FOR VIDEO](#) Notes: Item Location: Trilla, IL 62469 Equipment Sold "AS IS, WHERE IS": All equipment/property is sold "AS IS, WHERE IS" with no warranty or guarantees, expressed or implied, No operational assessments or testing have been made by Del Peterson on this item, it has been photographed ONLY.



#293 - 21' Screw Conveyor (Item-293)

21' Screw Conveyor (Item-293), 6", motor is 1.5HP, 208/230/460 volts, 3 phase, has a shaft mount reducer, comes complete with covers. Notes: Item Location: Trilla, IL 62469 Equipment Sold "AS IS, WHERE IS": All equipment/property is sold "AS IS, WHERE IS" with no warranty or guarantees, expressed or implied, No operational assessments or testing have been made by Del Peterson on this item, it has been photographed ONLY.



#294 - 30' Screw Conveyor (Item-294)

30' Screw Conveyor (Item-294), 6", motor is 1.5HP, 208/230/460 volts, 3 phase, has a shaft mount reducer, comes complete with covers. Notes: Item Location: Trilla, IL 62469 Equipment Sold "AS IS, WHERE IS": All equipment/property is sold "AS IS, WHERE IS" with no warranty or guarantees, expressed or implied, No operational assessments or testing have been made by Del Peterson on this item, it has been photographed ONLY.



#295 - 14' Screw Conveyor (Item-295)

14' Screw Conveyor (Item-295), 6", motor is 2HP, 230/460 volts, 3 phase, has a Dodge shaft mount reducer, comes complete with covers. Notes: Item Location: Trilla, IL 62469 Equipment Sold "AS IS, WHERE IS": All equipment/property is sold "AS IS, WHERE IS" with no warranty or guarantees, expressed or implied, No operational assessments or testing have been made by Del Peterson on this item, it has been photographed ONLY.



#296 - 19' Screw Conveyor (Item-296)

19' Screw Conveyor (Item-296), 6", motor is 2HP, 208/230/460 volts, 3 phase, unit has Dodge shaft mount reducer, comes complete with covers. Notes: Item Location: Trilla, IL 62469 Equipment Sold "AS IS, WHERE IS": All equipment/property is sold "AS IS, WHERE IS" with no warranty or guarantees, expressed or implied, No operational assessments or testing have been made by Del Peterson on this item, it has been photographed ONLY.



#297 - Pallet of Various Sized Cleated Belts (Item-297)

Pallet of Various Sized Cleated Belts (Item-297), (1) belt is 23" wide x 50' long w/ 3" high cleats, (1) belt is 23" wide x 20' long w/ 2" high cleats, (1) belt is 30" wide x 50' long w/ 3" high cleats, (1) belt is 36" wide x 15' long w/ 1/2" high V-Cleats. Notes: Item Location: Trilla, IL 62469 Equipment Sold "AS IS, WHERE IS": All equipment/property is sold "AS IS, WHERE IS" with no warranty or guarantees, expressed or implied, No operational assessments or testing have been made by Del Peterson on this item, it has been photographed ONLY.



#298 - (3) 23" Wide Cleated Conveyor Belting (Item-298)

(3) 23" Wide Cleated Conveyor Belting (Item-298), (1) is 16' long w/ 2" high cleats, (1) is 19' long w/ 2.5" high cleats, (1) is 30' long w/ 2.25" high cleats. Notes: Item Location: Trilla, IL 62469 Equipment Sold "AS IS, WHERE IS": All equipment/property is sold "AS IS, WHERE IS" with no warranty or guarantees, expressed or implied, No operational assessments or testing have been made by Del Peterson on this item, it has been photographed ONLY.



#299 - (2) Sortex Color Sorters w/ Vibratory Feeders (Item-299)

(2) Sortex Color Sorters w/ Vibratory Feeders (Item-299), first unit is a model 9102 (S/N 92264), it is a single phase, 220 volt and is 60 hertz, this unit appears to be complete, second unit is model 964 (S/N 90587), it is single phase, 200 volt and is 60 hertz, this unit is missing parts, we DO NOT have literature for either unit, neither unit has been tested, these are older unit, please bid accordingly. Notes: Item Location: Trilla, IL 62469 Equipment Sold "AS IS, WHERE IS": All equipment/property is sold "AS IS, WHERE IS" with no warranty or guarantees, expressed or implied, No operational assessments or testing have been made by Del Peterson on this item, it has been photographed ONLY.



#300 - Pallet of Conveyor Belting (Item-300)

Pallet of Conveyor Belting (Item-300), approximately 50' of flat conveyor belting with 1/2" rib down the sides and middle, approximately 20' of 12" wide belting with 1/4" high cleats, approximately 100' of 16" wide flat belting. Notes: Item Location: Trilla, IL 62469 Equipment Sold "AS IS, WHERE IS": All equipment/property is sold "AS IS, WHERE IS" with no warranty or guarantees, expressed or implied, No operational assessments or testing have been made by Del Peterson on this item, it has been photographed ONLY.



#301 - Carter-Day 2523 Disc Mill (Item-301)

Carter-Day 2523 Disc Mill (Item 301), unit has a 3HP 3 Phase 220/440 volt motor, starting at the infeed end the unit has 12 J discs and 11 EE discs, this unit can be used to separate oats from hulled oat, J discs can also be used to lift cheat out of fescue, J discs will also lift spring wheat and small durum. J discs will reject oats, wild oats, and barley. EE discs will lift spring wheat, small or broken durum, and pearled or broken barley, EE discs will reject Durum, large spring wheat, barley, oats, and pin oats, unit is in good condition, see attached brochure for more information. Notes: Item Location: Trilla, IL 62469 Equipment Sold "AS IS, WHERE IS": All equipment/property is sold "AS IS, WHERE IS" with no warranty or guarantees, expressed or implied, No operational assessments or testing have been made by Del Peterson on this item, it has been photographed ONLY.



#302 - Carter-Day 1522 Disc Mill (Item-302)

Carter-Day 1522 Disc Mill (Item-302), style number ZT1, starting from the infeed end (15) discs are V4 and (7) are V4.5, this unit has a 1/2HP 208-220/440 volt 3 phase motor, unit is in good condition, see attached brochures for more information including SEPARATING INFORMATION. Notes: Item Location: Trilla, IL 62469 Equipment Sold "AS IS, WHERE IS": All equipment/property is sold "AS IS, WHERE IS" with no warranty or guarantees, expressed or implied, No operational assessments or testing have been made by Del Peterson on this item, it has been photographed ONLY.



#303 - Bucket Elevator Service Platform (Item-303)

Bucket Elevator Service Platform (Item-303), 40" x 48", railing is 44" tall. Notes: Item Location: Trilla, IL 62469 Equipment Sold "AS IS, WHERE IS": All equipment/property is sold "AS IS, WHERE IS" with no warranty or guarantees, expressed or implied, No operational assessments or testing have been made by Del Peterson on this item, it has been photographed ONLY.



#304 - Ideal 7 Indent/Length Separator 450 BPH (Item-304)

Ideal 7 Indent/Length Separator 450 BPH (Item-304), the top 2 indents are size 20 they split the incoming crop & what the 20s pick up go down to (2) size 14 drums, what the 20s reject go to the number 23 drum for final cleaning, the seed that went to the 14 drums then is cleaned by lifting out anything smaller than the grain & put in to the number 10 drums for final cleaning, the bottom 2 number 14 drums have the indents that are inside the indent. That is where the number 10 drums are, this is a nice machine with 450 BPH & will remove goat grass from wheat & vetch from any other grains like rye, wheat, oats, etc., the 2 motors are 3HP 208/230/460 volts. [CLICK HERE FOR VIDEO](#) Notes: Item Location: Trilla, IL 62469 Equipment Sold "AS IS, WHERE IS": All equipment/property is sold "AS IS, WHERE IS" with no warranty or guarantees, expressed or implied, No operational assessments or testing have been made by Del Peterson on this item, it has been photographed ONLY.



#305 - (RARE) Paragon Timothy Bumper Mill (Item-305)

(RARE) Paragon Timothy Bumper Mill (Item-305), this mill is designed for timothy seed, it may work on other small seed like teff, 1/4HP motor is all it takes to run these units, this motor is single phase, I have all the documentation when this machine was bought new, see attachments, i have used this kind of unit in my plant & cleaned timothy to 99.99% pure seed. [CLICK HERE FOR VIDEO](#) Notes: Item Location: Trilla, IL 62469 Equipment Sold "AS IS, WHERE IS": All equipment/property is sold "AS IS, WHERE IS" with no warranty or guarantees, expressed or implied, No operational assessments or testing have been made by Del Peterson on this item, it has been photographed ONLY.



#306 - Gustafson S600 Seed Treater (Item-306)

Gustafson S600 Seed Treater (Item-306), with 50 gallon stainless steel mix tank, both seed treater and mixing tank are stainless steel, treater has 2HP, 3 phase, 208-230/460 volt electric motor, the coating chamber is variable speed, the mix tank has (2) 1/3HP, 208-230/460 volt electric motors, unit has been cleaned and inspected, and all NEW belts have been installed, it is in good serviceable condition. Notes: Item Location: Trilla, IL 62469 Equipment Sold "AS IS, WHERE IS": All equipment/property is sold "AS IS, WHERE IS" with no warranty or guarantees, expressed or implied, No operational assessments or testing have been made by Del Peterson on this item, it has been photographed ONLY.



#307 - C.S. Bell No. 2 HAND GRIST MILL (Item-307)

C.S. Bell No. 2 HAND GRIST MILL (Item-307), for small grains, seeds and other dry materials, including grains, peas, beans, coffee, black pepper and other materials of similar size, makes cornmeal, whole grain flour and animal feeds, special long-life alloy grinding burrs, adjustable for coarse to fine grinding, hand operated. [CLICK HERE FOR VIDEO](#) Notes: Item Location: Trilla, IL 62469 Equipment Sold "AS IS, WHERE IS": All equipment/property is sold "AS IS, WHERE IS" with no warranty or guarantees, expressed or implied, No operational assessments or testing have been made by Del Peterson on this item, it has been photographed ONLY.



#308 - Plastic Banding Kit (Item-308)

Plastic Banding Kit (Item-308), band size is 1/2", comes with banding cart, 2 band ratchets, band crimpers, and extra roll of banding. Notes: Item Location: Trilla, IL 62469 Equipment Sold "AS IS, WHERE IS": All equipment/property is sold "AS IS, WHERE IS" with no warranty or guarantees, expressed or implied, No operational assessments or testing have been made by Del Peterson on this item, it has been photographed ONLY.



#309 - Allen Bradley Shaker Conveyor (Item-309)

Allen Bradley Shaker Conveyor (Item-309), Model D14566, unit has a 1/2HP, 3 phase, 230/460 volt motor, trough is 5' long x 18" wide x 4" deep, unit has a divider in the middle of the trough for conveying two different product streams, unit is in good condition. Notes: Item Location: Trilla, IL 62469 Equipment Sold "AS IS, WHERE IS": All equipment/property is sold "AS IS, WHERE IS" with no warranty or guarantees, expressed or implied, No operational assessments or testing have been made by Del Peterson on this item, it has been photographed ONLY.



#310 - Brummel Iron Powder Mill (Item-310)

Brummel Iron Powder Mill (Item-310), this is used to remove buckhorn from red clover & many other weed seeds from alfalfa & clovers, this unit is in running condition & will separate many different seeds, see the attached list. [CLICK HERE FOR VIDEO](#) Notes: Item Location: Trilla, IL 62469 Equipment Sold "AS IS, WHERE IS": All equipment/property is sold "AS IS, WHERE IS" with no warranty or guarantees, expressed or implied, No operational assessments or testing have been made by Del Peterson on this item, it has been photographed ONLY.



#311 - 55 Gallon Poly Tank w/ Pump & Motor (Item-311)

55 Gallon Poly Tank w/ Pump & Motor (Item-311), pump is a Hypo Roller Pump, motor is 1/2HP, 3 phase, 230/460 volts. Notes: Item Location: Trilla, IL 62469 Equipment Sold "AS IS, WHERE IS": All equipment/property is sold "AS IS, WHERE IS" with no warranty or guarantees, expressed or implied, No operational assessments or testing have been made by Del Peterson on this item, it has been photographed ONLY.



#312 - Gustafson S 100 Seed Treater (Item-312)

Gustafson S 100 Seed Treater (Item-312), unit is stainless steel, treater has 2HP 3 phase, 208-230/460 volt electric motor, the coating chamber is variable speed. Unit has been cleaned and inspected and is in good serviceable condition, please see attached brochure for more information. Notes: Item Location: Trilla, IL 62469 Equipment Sold "AS IS, WHERE IS": All equipment/property is sold "AS IS, WHERE IS" with no warranty or guarantees, expressed or implied, No operational assessments or testing have been made by Del Peterson on this item, it has been photographed ONLY.



#313 - Garvey Stencil w/ Stencil Brush (Item-313)

Garvey Stencil w/ Stencil Brush (Item-313), letters are 1" tall x 3/4' wide. Notes: Item Location: Trilla, IL 62469 Equipment Sold "AS IS, WHERE IS": All equipment/property is sold "AS IS, WHERE IS" with no warranty or guarantees, expressed or implied, No operational assessments or testing have been made by Del Peterson on this item, it has been photographed ONLY.



#314 - Valley Craft 2-Wheeled Standard Pallet Truck (Item-314)

Valley Craft 2-Wheeled Standard Pallet Truck (Item-314), Valley Craft's EZY-Tilt 2 wheel pallet truck is constructed of rugged 14-gauge 11/8 in. O.D. steel tubing, featuring 11 in. steel shoe that locks into position automatically and easily released by tripping a foot lever, mold on tires, 1 in. steel encased in a protective housing and 1,000lb load capacity, we have no pallets to offer with this unit. Notes: Item Location: Trilla, IL 62469 Equipment Sold "AS IS, WHERE IS": All equipment/property is sold "AS IS, WHERE IS" with no warranty or guarantees, expressed or implied, No operational assessments or testing have been made by Del Peterson on this item, it has been photographed ONLY.

